

| LEGEND | | | |
|----------|---|------|--------------------------------|
| A-12-400 | TYPE - NECK SIZE - CFM | EF#1 | EXHAUST FAN #1 (TYP) |
| | SPIN-IN FITTING WITH MANUAL BALANCING DAMPER, WITHOUT SCOOP | ACH1 | AIR CONDITIONING UNIT #1 (TYP) |
| | SPIN-IN HARD FLEXIBLE DIFFUSER | | RETURN/EXHAUST (TYP) |
| | REMOTE TEMPERATURE SENSOR | | SUPPLY DIFFUSER, 80 FACE (TYP) |
| | HUMIDITY SENSOR | | PLAN NOTE REFERENCE |
| | SMOKE DETECTOR | | MANUAL VOLUME DAMPER |
| 1208 | DUCT SIZE 1ST NUMBER - HORIZONTAL DIMENSION 2ND NUMBER - VERTICAL DIMENSION | | DIRECTION OF THROW ON DIFFUSER |

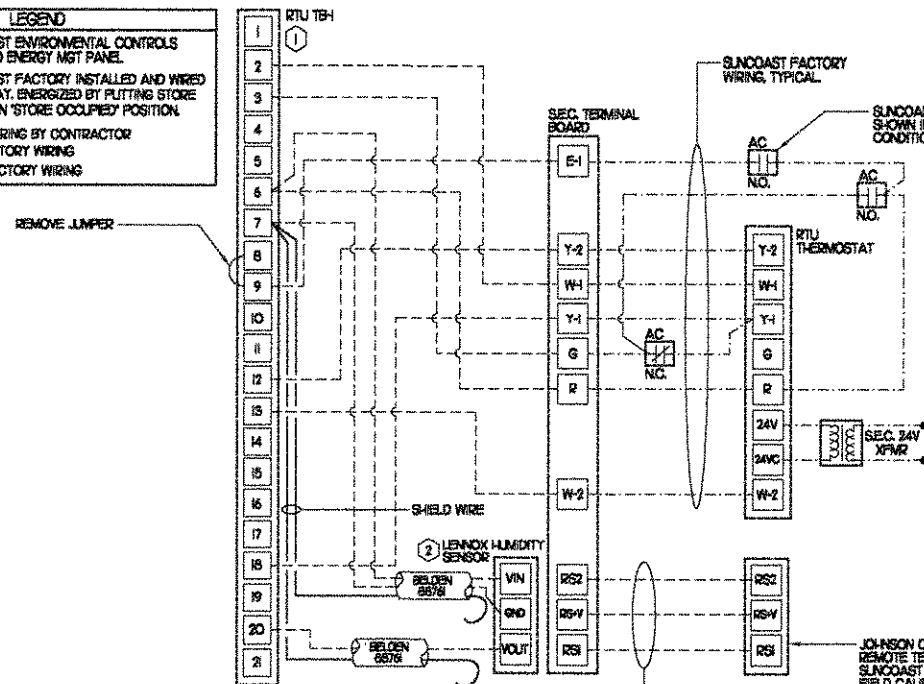
LENNOX FRESH AIR TEMPERING SETUP

- INSTALL FRESH AIR TEMPERING KIT WIRING HARNESS AS RECOMMENDED BY LENNOX.
- LOCATE SUPPLY AIR TEMPERATURE SENSOR IN SUPPLY DUCT DOWNSTREAM OF FIRST ELBOW. SECURE WIRING TO DUCT OR STRUCTURE WITH RUBBER COATED CLAMPS. DO NOT RUN WIRING INSIDE DUCT WORK. PROTECT PENETRATION IN DUCT FOR SENSOR WITH RUBBER GROMMET.
- CHANGE ROOFTOP UNIT ECTO PARAMETER 620 TO A VALUE OF 142. THIS WILL PREVENT THE SUPPLY AIR TEMPERATURE FROM DROPPING BELOW 68 DEG DURING HEATING MODE WHEN THERMOSTAT IS NOT ACTIVELY CALLING FOR HEAT.
- ECTO PARAMETER 620 MUST BE CHANGED TO ACTIVATE THE FRESH AIR TEMPERING FEATURE.

KEY NOTES

- MOUNT REMOTE SENSOR ON WALL AT 5'-0" AFF AND ROUTE WIRING BACK TO SUNCOAST TEMP CONTROL PANEL.
- AIR CURTAIN MOUNTED OVER DOOR HEADER AT 7'-5" AFF TO BOTTOM OF UNIT. LOCATE PLUNGER TYPE MICROSWITCH IN DOOR FRAME ON STRIKE SIDE.
- BRANCH TAKE-OFFS ARE NOT TO BE LOCATED CLOSER THAN 3'-0" FROM THE ELBOW AT THE SUPPLY AIR DROP FROM CURB.
- TRANSITION IN VERTICAL DROP FROM FULL SIZE OF CURB OPENING TO 22X20. PROVIDE TURNING VANES IN ELBOW.
- MAKE VERTICAL DROP FULL SIZE OF CURB OPENING INTO TOP OF RETURN PLENUM.
- HOLD DUCT CLOSE TO WALL AT HAND SINK TO PROVIDE MAXIMUM CLEARANCE DUE TO LIGHT FIXTURES. TRANSITION IN VERTICAL DROP FROM FULL SIZE OF CURB OPENING TO 26X17. PROVIDE TURNING VANES IN ELBOW.
- MOUNT REMOTE SENSOR FOR PLAYGROUND ABOVE DOOR FRAME NEAR THE RETURN AIR GRILLES. ROUTE WIRING BACK TO SUNCOAST TEMP CONTROL PANEL.
- TRANSITION IN VERTICAL DROP FROM FULL SIZE OF CURB OPENING TO 24X20. PROVIDE TURNING VANES IN ELBOW.
- TRANSITION IN VERTICAL DROP FROM FULL SIZE OF CURB OPENING TO 22X18. PROVIDE TURNING VANES IN ELBOW.
- MOUNT LENNOX HUMIDITY SENSOR ON WALL AT 5'-0" AFF AND ROUTE WIRING TO UNIT ON ROOF.
- INSULATION ON DUCT DROP THROUGH UPPER CEILING TO STOP AT UPPER CEILING PENETRATION SAND/DEGREASE GALVANIZED SHEET METAL AND PAINT FLAT WHITE. CEILING TILE AT UPPER CEILING TO BE CUT TO FIT AROUND DUCT DROP.

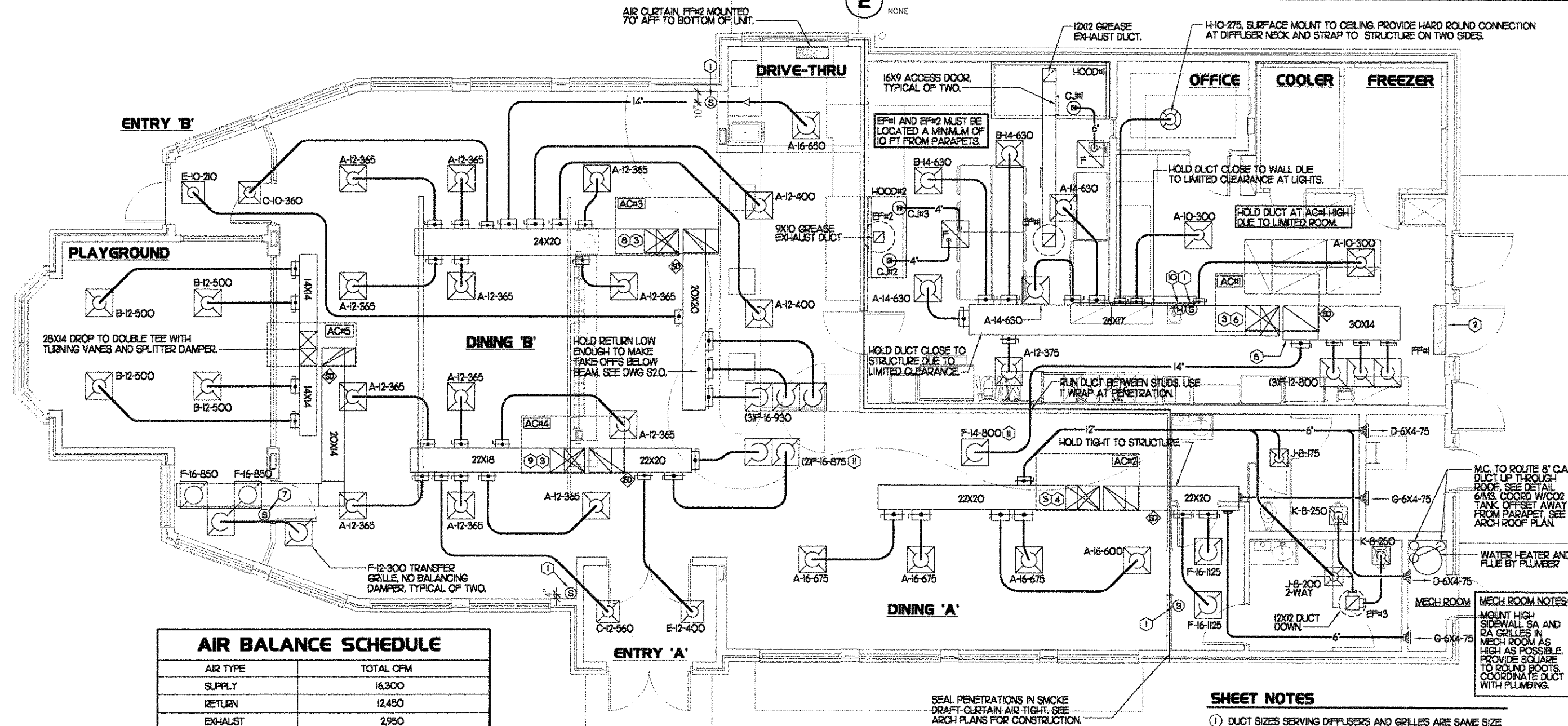
| LEGEND | |
|--------|---|
| SEC. | SUNCOAST ENVIRONMENTAL CONTROLS OFA-500 ENERGY MGT PANEL. |
| AC | SUNCOAST FACTORY INSTALLED AND WIRED A/C RELAY, ENERGIZED BY PLUTING STORE SWITCH IN 'STORE OCCUPIED' POSITION. |
| - - - | 18 GA. WIRING BY CONTRACTOR |
| - - - | RTU FACTORY WIRING |
| - - - | SEC. FACTORY WIRING |



- NOTES**
- EXCEPT AT ACH, CHANGE IMC BOARD ECTO PARAMETER 301 (D1 FOR LCA UNITS) FROM THE DEFAULT SETTING TO ZERO. THIS WILL CAUSE THE O.A. DAMPER TO OPEN ON 'OCCUPIED' START. THE O.A. DAMPER AT ACH WILL REMAIN CLOSED FOR THE FIRST 60 MINUTES AFTER 'OCCUPIED' START.
 - MECHANICAL CONTRACTOR SHALL MAKE PLASTIC LAMINATE OF THIS DETAIL AND INSTALL PERMANENTLY ON INSIDE DOOR OF ROOFTOP UNIT CONTROL COMPARTMENT.
 - SEE DETAIL S418 FOR SMOKE DETECTOR AND ANNUNCIATOR WIRING.
 - HUMIDITY ECTO PARAMETERS TO BE FIELD SET AS FOLLOWS:
ECTO 424 VALUE SET TO 7
ECTO 425 VALUE SET TO 55

- NOTES**
- 18 AWG WIRING TO RTU TO BE ROUTED TO UNIT THRU FACTORY WIRING.
 - WIRING TO HUMIDITY SENSOR TO BE MADE WITH TWO SEPARATE RUNS OF SHIELDED TWISTED PAIR. TERMINATE SHIELD WIRES AT TB-7. LEAVE OPEN AT SENSOR.

2 ROOFTOP UNIT CONTROL WIRING



| AIR BALANCE SCHEDULE | |
|----------------------------|-----------|
| AIR TYPE | TOTAL CFM |
| SUPPLY | 16,300 |
| RETURN | 12,450 |
| EXHAUST | 2,950 |
| OUTSIDE AIR | 3,850 |
| BUILDING POSITIVE PRESSURE | 900 |

1 MECHANICAL FLOOR PLAN
1/4"=1'-0"

- SHEET NOTES**
- DUCT SIZES SERVING DIFFUSERS AND GRILLES ARE SAME SIZE AS DIFFUSER OR GRILLE NECK UNLESS NOTED OTHERWISE.

5200 Buffington Rd.
Atlanta Georgia,
30349-2998

Revisions:

| Mark | Date | By |
|------|------|----|
| △ | | |
| △ | | |
| △ | | |

Seal

BENOR ENGINEERING, LLC
3000 Longford Road
Building 2400
Norcross, GA 30071
770/728-1422 bus
770/728-0430 fax
rbenor@mindspring.com

STORE
S04-152
MADISON ST. @
CROSSLAND AVE.
CLARKSVILLE,
TENNESSEE

SHEET TITLE
MECHANICAL
FLOOR PLAN

DWG EDITION 04.6

EPreliminary
ES0% Submittal
EFor Construction

Job No : 3076
Store : 1673
Date : 01/09/04
Drawn By : MDS
Checked By : RDB
Sheet

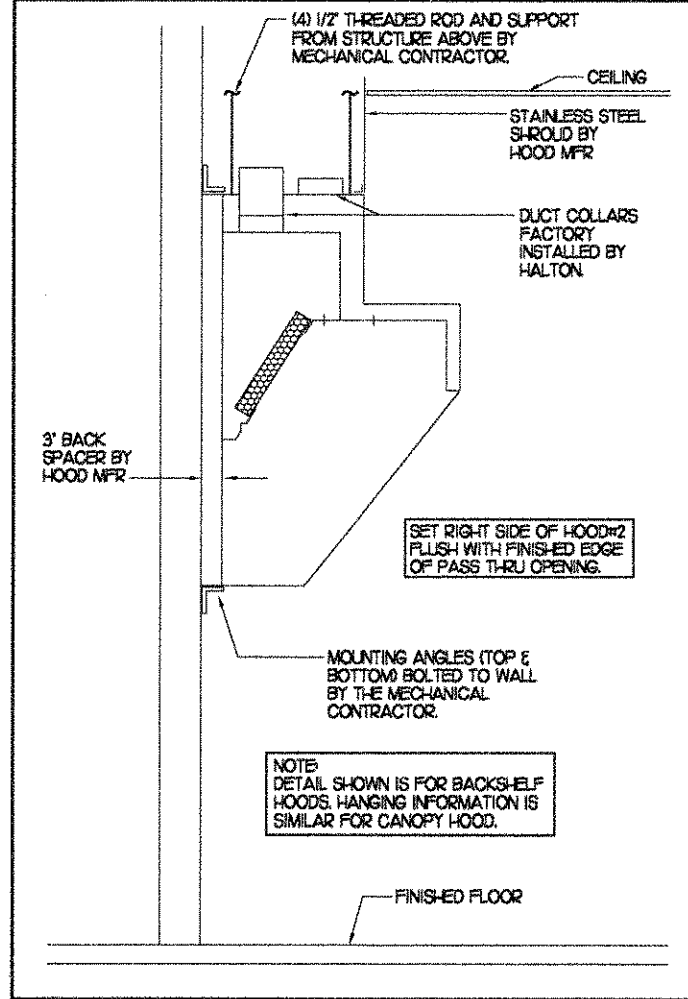
M-I

ISSUED FOR CONSTRUCTION

KITCHEN HOOD SYSTEMS NOTES

- CHICK-FIL-A MAINTAINS A NATIONAL ACCOUNT WITH HALTON CO. FOR THE HOODS. CHICK-FIL-A WILL PURCHASE AND PROVIDE THE HOODS FOR INSTALLATION BY THE GENERAL CONTRACTOR. THE GENERAL CONTRACTOR SHALL BE RESPONSIBLE FOR RECEIVING THE HOODS. CONTACT HALTON CO. AT 270-237-5600 FOR MORE INFO.
- REFER TO "PART 2 CONTROLS" OF THE MECHANICAL SPECIFICATIONS FOR DIFFERENTIATION BETWEEN CONTROL AND POWER WIRING RESPONSIBILITIES.
- ANY CONTACTORS OR WIRING REQUIRED FOR SHUT-OFF OF ELECTRIC COOKING EQUIPMENT SHALL BE FURNISHED AND INSTALLED BY ELECTRICAL CONTRACTOR.
- ALL ROOF CURBS SHALL BE SHIMMED LEVEL.
- ROOF CURBS FOR EXHAUST SYSTEMS SHALL BE INSTALLED IN ACCORDANCE WITH THE "NATIONAL ROOFING CONTRACTORS ASSOCIATION" GUIDELINES, AND THE ROOFING SUPPLIER'S DETAILS AND GUIDELINES FOR THE SPECIFIC ROOFING MATERIALS USED. ALL CURB INSULATION SHALL BE SUPPLIED AND INSTALLED BY ROOFING CONTRACTOR.
- THE GENERAL CONTRACTOR SHALL PROVIDE ALL ROOF/OUT OPENINGS AND OTHER STRUCTURAL REQUIREMENTS FOR THE INSTALLATION OF ALL ROOF EQUIPMENT. REFER TO STRUCTURAL FRAMING PLAN FOR EQUIPMENT LOCATION DIMENSIONS.
- THE FIRE SUPPRESSION SYSTEM SHALL CONSIST OF A COMPLETE WET ANSUL SYSTEM FURNISHED BY HALTON. THE HOOD SHALL BE FURNISHED PRE-PIPED BY HALTON COMPONENTS AND INSTALLATION SHALL MEET THE REQUIREMENTS OF NFPA-96, NFPA-17A, ALL APPLICABLE STATE AND FEDERAL CODES AND STANDARDS.
- THE R-102 ANSUL FIRE SUPPRESSION SYSTEM EXTERNAL TO THE HOODS SHALL BE INSTALLED IN ACCORDANCE WITH HOOD MANUFACTURER'S SHOP DRAWINGS BY AN AUTHORIZED ANSUL SYSTEM INSTALLER HIRED BY HALTON.
- PORTABLE FIRE EXTINGUISHERS IN THE KITCHEN SHALL BE PROVIDED BY THE GENERAL CONTRACTOR IN COMPLIANCE WITH NFPA-10 AND LOCAL REQUIREMENTS.
- OUTLETS OF EXHAUST FANS SHALL BE AT LEAST 40 INCHES ABOVE ROOF LINE.
- EXHAUST FANS SHALL BE LOCATED A MINIMUM OF 10 FEET FROM ANY FRESH AIR INTAKE MEASUREMENT SHALL BE MADE USING STRETCHED STRING METHOD.
- HOOD EXHAUST DUCTWORK SHALL BE 16 GA. BLACK STEEL WITH CONTINUOUS LIQUID TIGHT WELD OF JOINTS & SEAMS AS PER NFPA-96.
- URNS IN GREASE EXHAUST DUCTWORK SHALL BE LONG RADIUS TYPE, WITH A CENTERLINE RADIUS R-3W/2, NO EXCEPTIONS ALLOWED. NO MITERED FITTINGS ALLOWED.
- HOODS AND ASSOCIATED DUCTWORK SHALL BE INSTALLED PER NFPA 96 AND LOCAL CODES.
- ALL STAINLESS STEEL SHROUDS SHALL BE SUPPLIED BY HOOD MANUFACTURER AND INSTALLED BY THE GENERAL CONTRACTOR ACCORDING TO MANUFACTURER'S RECOMMENDATIONS.
- HOODS, FANS AND ACCESS DOORS SHALL BE LISTED BY UNDERWRITERS INC. AND SHALL MEET REQUIREMENTS OF NFPA-96.
- ACCESS DOORS SHALL BE REMOVABLE WITHOUT USE OF TOOLS AND BE PROVIDED WITH GASKET SEAL.
- SLOPE ALL GREASE EXHAUST DUCT BACK TO HOOD AT 1/4" PER FOOT OF RUN.
- WRAP NEW GREASE DUCT WITH 3M FIRE BARRIER 15A. ACCESS DOORS SHALL BE INSTALLED ACCORDING TO 3M FIRE BARRIER PRODUCTS INSTALLATION MANUAL.

SIDE VIEW OF HOOD



HOOD SCHEDULE

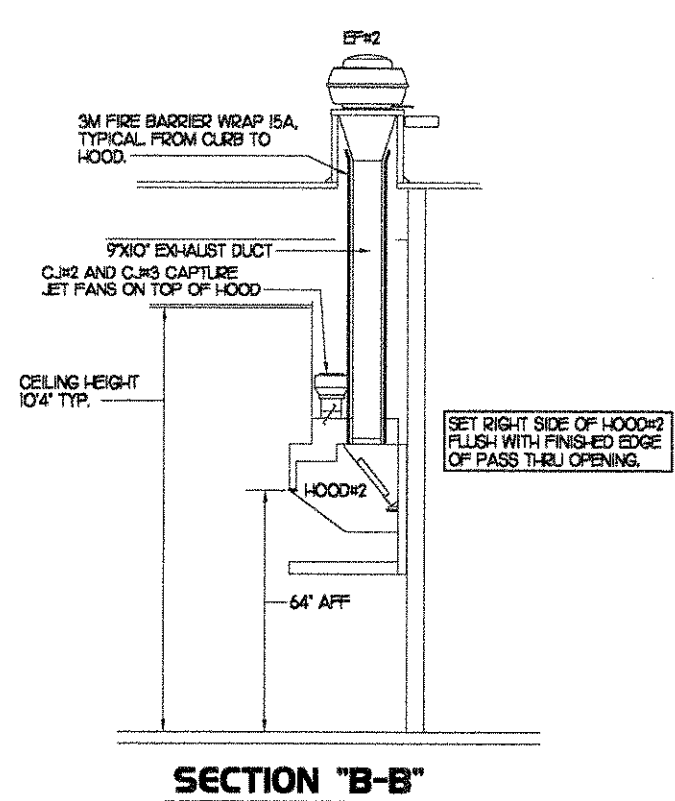
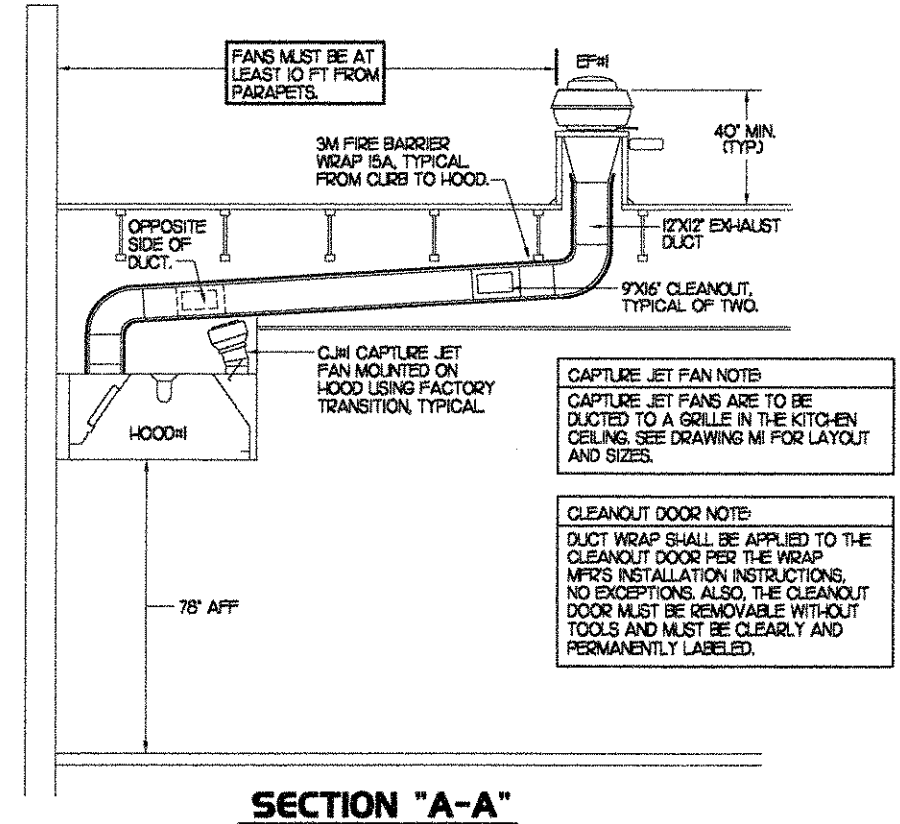
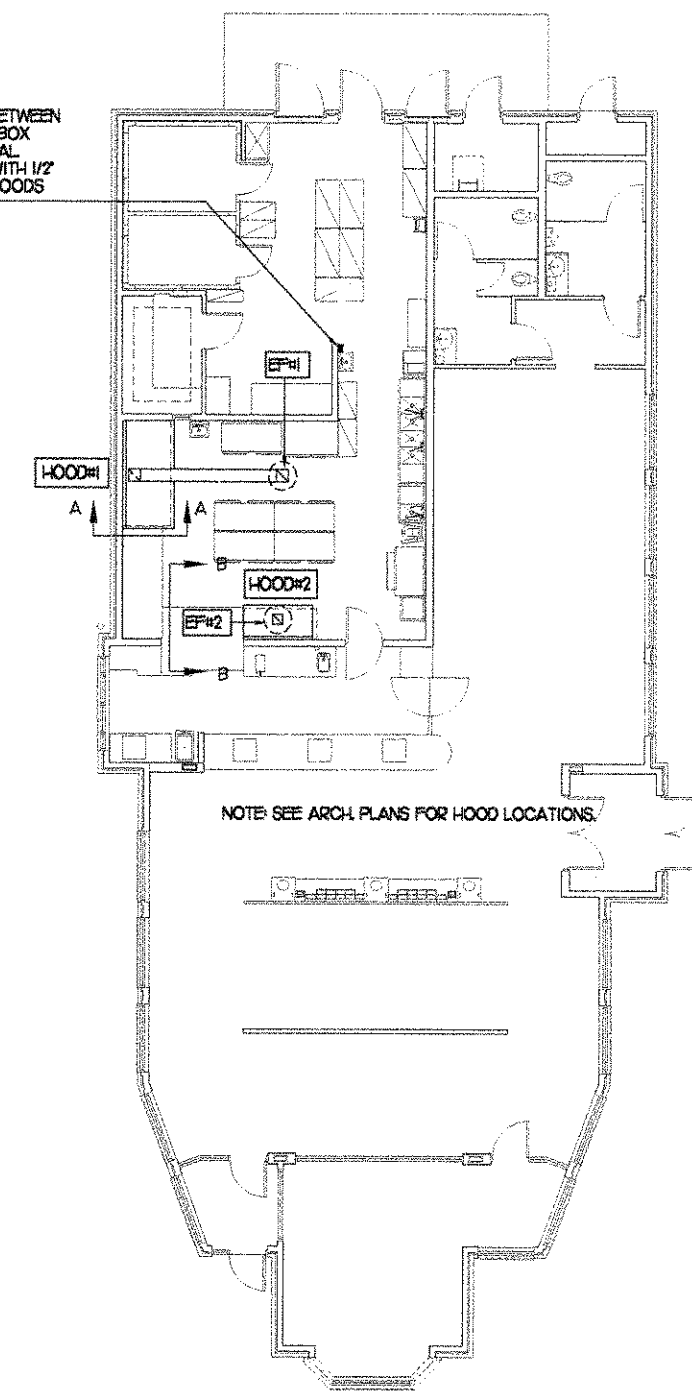
| MARK | EXHAUST CFM | SP * TAB PORT | CAPTURE JET CFM & SP. | TYPE | COLLAR SIZE | WIDTH | DEPTH | HEIGHT | MANUFACTURER | MODEL | REMARKS |
|--------|-------------|---------------|-----------------------|------------|-------------|-------|-------|--------|--------------|-------|-------------------|
| HOOD#1 | 1500 | 23" | 102 @ 0.72' | CANOPY | 12X12" | 106" | 51" | 24" | HALTON | KVE | 1,2,3,4,5,6,7,8,9 |
| HOOD#2 | 950 | 23" | 48 @ 0.30' | BACK SHELF | 9X10" | 72" | 34" | 48" | HALTON | KVL | 1,2,4,5,9,10 |

NOTES: DIMENSIONS OF HOODS INCLUDE BACK AND SIDE SPACERS (HEIGHT DOES NOT INCLUDE CLOSURE PANELS).

REMARKS:

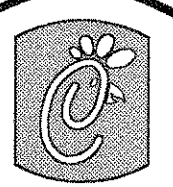
- 1) STAINLESS STEEL CONSTRUCTION.
- 2) PROVIDE FULL HEIGHT SS CLOSURE PANEL WITH ACCESS PANEL IN FRONT LARGE ENOUGH TO REMOVE CAPTURE JET FAN.
- 3) PROVIDE FULL HEIGHT SS CLOSURE PANEL WITH ACCESS PANEL IN FRONT LARGE ENOUGH TO SERVICE ANSUL COMPONENTS.
- 4) PROVIDE PRE-PIPED ANSUL R-102 WET FIRE EXTINGUISHING SYSTEM.
- 5) PROVIDE 3" BACK SPACER.
- 6) PROVIDE 3" RIGHT SIDE SPACER.
- 7) PROVIDE PARTIAL SIDE SKIRT ON LEFT SIDE.
- 8) PROVIDE BLANK-OFF PLATE FOR SWITCH COVER.
- 9) PROVIDE TOP PLENUM CAPTURE JET FAN, SPEED CONTROLLER AND COLLAR.
- 10) PROVIDE INTEGRAL SIDE CAPTURE JET ASSEMBLY AND FAN.

ANSUL REMOTE PULL STATION BETWEEN HANDSINK AND END OF WALL. J-BOX AND CONDUIT ARE BY ELECTRICAL. PROVIDE RED BAKELITE LABEL WITH 1/2" HIGH LETTERS INDICATING THE HOODS SERVED.



2 HOOD ELEVATIONS

1 HOOD LAYOUT



Chick-fil-A

5200 Buffington Rd.
Atlanta Georgia,
30349-2998

Revisions:
Mark Date By

△

Mark Date By

△

Mark Date By

△

Seal

BENKOR ENGINEERING, LLC
3000 Langford Road
Building 2400
Norcross, GA 30071
(770) 728-1422 bus
(770) 728-0490 fax
rbenkor@benkoreng.com



STORE
S04-152
MADISON ST. @
CROSSLAND AVE.
CLARKSVILLE,
TENNESSEE

SHEET TITLE
HOOD DETAILS
& SCHEDULES

ENG EDITION 04.6

□ Preliminary
□ 30% Submittal
□ For Construction

Job No. : 3076

Store : 1673

Date : 01/09/04

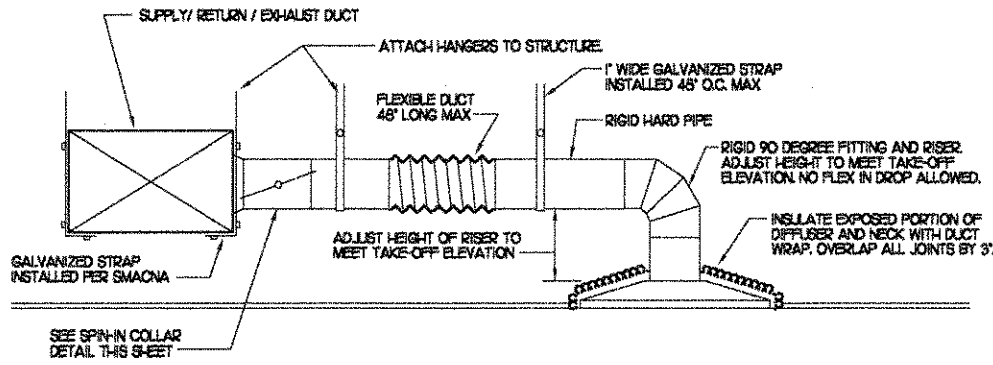
Drawn By : MDS

Checked By : RDB

Sheet

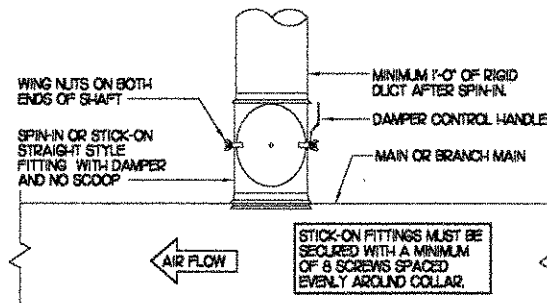
M-2

ISSUED FOR CONSTRUCTION

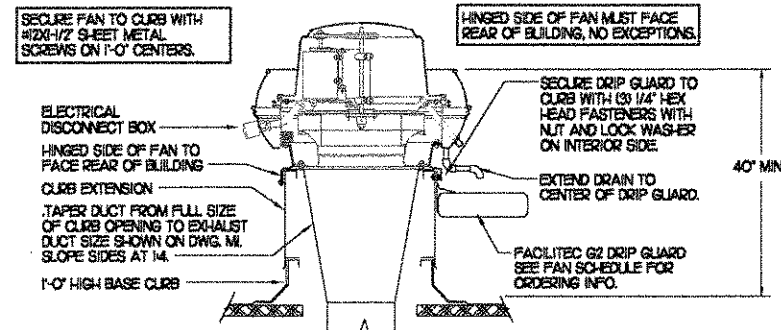


1 SAG/RAG/GRILLE TAKE-OFF
NO SCALE

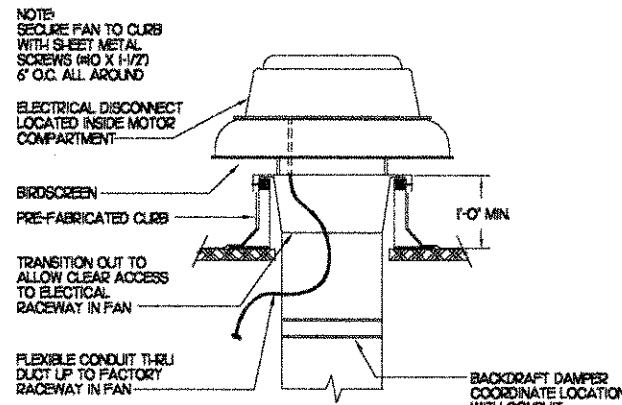
DAMPER CONTROL HANDLE MUST BE LEFT EXPOSED. ATTACH A YELLOW FLUORESCENT CONSTRUCTION RIBBON TO THE HANDLE. RIBBON MUST HANG 12\"/>



2 SPIN-IN COLLAR
NO SCALE



3 KITCHEN HOOD EXHAUST FAN
NO SCALE



4 RESTROOM EXHAUST FAN
NO SCALE

GAS FIRED ROOFTOP UNIT SCHEDULE

| MARK | COOLING CAPACITY (MBH) | | HEATING CAPACITY (MBH) | | FAN SECTION (CFM) | | | | MODEL | MANUFACTURER | REMARKS |
|------|------------------------|------|------------------------|--------|-------------------|-------|-----|-----|---------|--------------|--------------------------------|
| | TOTAL | SENS | INPUT | OUTPUT | SUPPLY | O.A. | IP | ESP | | | |
| ACH1 | 145.6 | 99.0 | 235.0 | 188.0 | 4,400 | 1,300 | 3 | 70 | LG020SH | LENNOX | 13.5.6.7.8.9.10.11.12.13.14.15 |
| ACH2 | 104.0 | 71.8 | 235.0 | 188.0 | 3,150 | 750 | 2 | 65 | LG020SH | LENNOX | 2.3.5.7.8.9.10.11.12.13.15 |
| ACH3 | 128.0 | 90.8 | 235.0 | 188.0 | 4,000 | 1,000 | 3 | 65 | LG020SH | LENNOX | 13.5.7.8.9.10.11.12.13.15 |
| ACH4 | 94.5 | 69.9 | 235.0 | 188.0 | 2,750 | 600 | 2 | 65 | LG020SH | LENNOX | 2.3.5.6.7.8.9.10.11.12.13.15 |
| ACH5 | 69.9 | 47.3 | 125.0 | 98.75 | 2,000 | 300 | 1.5 | 65 | LG020SH | LENNOX | 3.4.5.6.7.8.9.10.11.12.13.15 |

NOTES: COOLING CAPACITIES ARE GROSS, BASED ON INDOOR EDB: 80F, INDOOR EWB: 67F, OUTDOOR EDB: 95F

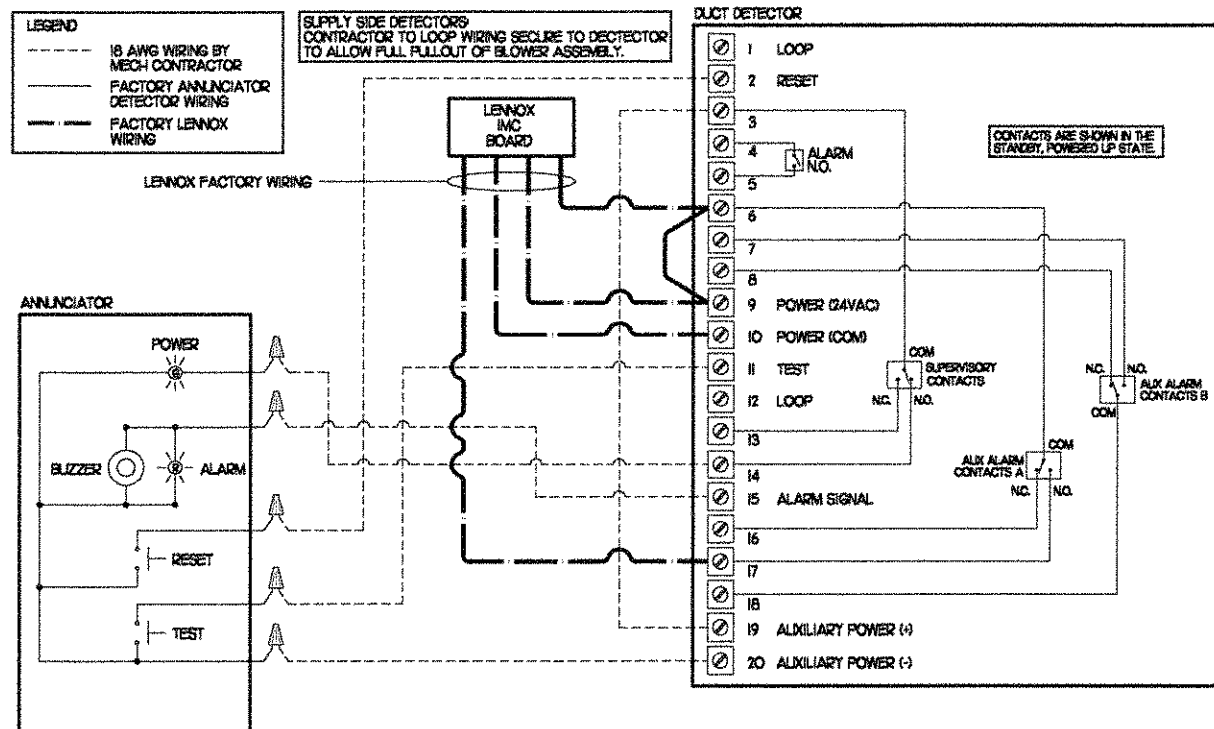
REMARKS: 1) PROVIDE DIFFERENTIAL ENTHALPY ECONOMIZER WITH POWER EXHAUST. 2) PROVIDE DIFFERENTIAL ENTHALPY ECONOMIZER WITH BAROMETRIC EXHAUST. 3) PROVIDE 14\"/>

EXHAUST FAN SCHEDULE

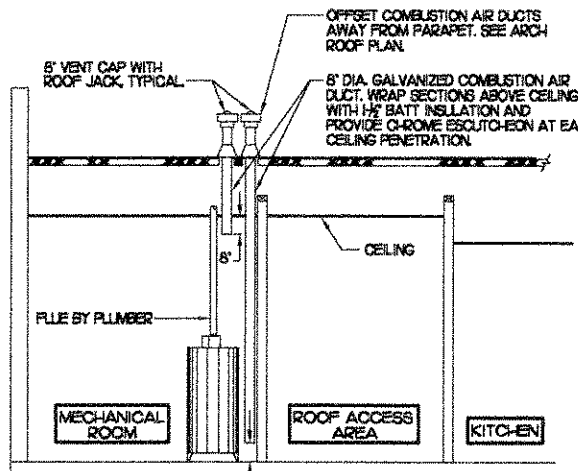
| MARK | CFM | ESP | RPM | TP SPEED (FPS) | IP | AREA SERVED | MODEL | MANUFACTURER | REMARKS |
|------|------|------|------|----------------|-----|-------------|------------|--------------|----------|
| EF#1 | 1500 | 0.65 | 1200 | 105 | 3/4 | HOO#1 | NERTD-140A | JEN | 123.4.6 |
| EF#2 | 950 | 0.60 | 950 | 91 | 3/4 | HOO#2 | NERTD-140A | JEN | 123.4.6 |
| EF#3 | 500 | .575 | 1083 | 58 | 1/4 | RESTROOMS | REDX265 | JEN | 25.7.8.9 |

NOTES: GREASE EXHAUST FAN RPM BASED ON 75 DEGREE F AIR AT SEA LEVEL.

REMARKS: 1) PROVIDE FACTORY 1\"/>



5 SMOKE DETECTOR AND ANNUNCIATOR WIRING DIAGRAM
NO SCALE



6 WATER HEATER VENT/C.A. ROUTING
NO SCALE

AIR DEVICE SCHEDULE

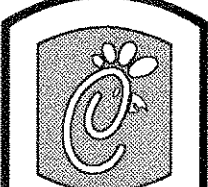
| MARK | DESCRIPTION | LOCATION | NECK SIZE | FACE SIZE | CEILING TYPE | REMARKS |
|------|---|---------------------|-----------|-----------|--------------|---------|
| A | METALARE MODEL 7600AL-6 ALUMINUM SUPPLY AIR DIFFUSER WITH AIR PATTERN CONTROLLERS. | DINING AREA KITCHEN | SEE PLAN | 24X24 | LAY-IN | 1 |
| B | METALARE MODEL 7600AL-6 ALUMINUM SUPPLY AIR DIFFUSER WITH AIR PATTERN CONTROLLERS. | KITCHEN PLAYGROUND | SEE PLAN | 24X24 | LAY-IN | 1 |
| C | METALARE MODEL 7000H1 ALUMINUM SUPPLY AIR DIFFUSER WITH AIR PATTERN CONTROLLERS. | ENTRY 'A' ENTRY 'B' | 14X14 | 20X20 | GYP/SLM | 1.5 |
| D | METALARE MODEL V400AD DOUBLE DEFLECTION ALUMINUM SIDEWALL SUPPLY REGISTER, OBEDE. FRONT BLADE PARALLEL TO SHORT SIDE. | MECHANICAL ROOM | SEE PLAN | SEE PLAN | NA | 1 |
| E | METALARE MODEL 7000R1 ALUMINUM RETURN AIR GRILLE. | ENTRY 'A' ENTRY 'B' | 14X14 | 20X20 | GYP/SLM | 1.5 |
| F | METALARE MODEL 005 TB ALUMINUM EGGRATE RETURN AIR GRILLE WITH 1/2\"/> | | | | | |

REMARKS: 1) STANDARD OFF WHITE FINISH. 2) PROVIDE MODEL B05 NECK DAMPER. 3) DIFFUSER IN MEN'S RR SHALL BE 2-WAY THROW. 4) PROVIDE MODEL R5D NECK DAMPER ON GRILLES IN RESTROOMS. 5) FIELD FABRICATE 8\"/>

AIR DOOR SCHEDULE

| MARK | CFM | VELOCITY | HEATING CAP | IP | AREA SERVED | MODEL | MANUFACTURER | REMARKS |
|------|------|----------|-------------|-----|-------------|----------------|--------------|---------|
| FF#1 | 1752 | 2600 | NA | 3/4 | REAR DOOR | STR-42A | BERNER | 1.3 |
| FF#2 | 69 | 1777 | 7200 W | 1/5 | DRIVE THRU | MAX-1-30EB-CFA | BERNER | 2.3 |

REMARKS: 1) FACTORY PROVIDED PLUNGER TYPE MICRO-SWITCH. 2) FACTORY PROVIDED DIGITAL HEAT/VALVE UNIT MOUNT CONTROLS. 3) CHICK-FIL-A HAS A NATIONAL ACCOUNT WITH BERNER AIR DOORS. THE MECHANICAL CONTRACTOR SHALL PURCHASE THE FANS DIRECTLY FROM BERNER. CONTACT BERNER AT 800-245-4455, FOR PRICING AND AVAILABILITY.



5200 Buffington Rd.
Atlanta Georgia,
30349-2998

Revisions:
Mark Date By

Mark Date By

Mark Date By

Mark Date By

Mark Date By

Mark Date By

Mark Date By

Mark Date By

Mark Date By

Mark Date By

Mark Date By

Mark Date By

Mark Date By

Mark Date By

Mark Date By

Mark Date By

Mark Date By

Mark Date By

Mark Date By

Mark Date By

Mark Date By

Mark Date By

Mark Date By

Mark Date By

Mark Date By

Mark Date By

Mark Date By

Mark Date By

M-3

ISSUED FOR CONSTRUCTION

