

# PlanGrid Task Report - Sep 12, 2025

Prepared by Stephen Tassinaro

Sep 12, 2025

## Description

28 tasks in this report.

## Contents

- #497 [UNIT 999] [EXIST] (MISC) - RTU-3 Final Filters ..... 3
- #496 [DUCT 499] [EXIST] CRITICAL – Dampers In Poor Condition/Unable to balance ..... 5
- #495 [UNIT 999] [EXIST] (MISC) - RTU-2 Alarm ..... 7
- #494 [EXHA 001] [NEW] CRITICAL – Grease duct access doors open ..... 7
- #493 [UNIT 499] [NEW] CRITICAL - RTU-1 Alarms..... 9
- #492 [DUCT 006] [NEW] CRITICAL – Flex duct installation RTU-1..... 12
- #491 [DUCT 010] [NEW] CRITICAL – Damper(s) missing hardware. .... 14
- #490 [CNTL 017] [NEW] CRITICAL Thermostat terminations incorrect..... 15
- #489 [EXHA 512] [NEW] Exhaust fan not bolted to hat channel..... 16
- #488 [EXHA 999] [NEW] KEF High Voltage Wiring..... 17
- #487 [HOOD 508] [NEW] Sidejet arm angle bracket. .... 19
- #486 [HOOD 511] [NEW] Hood 1L/1R hardware. .... 21
- #485 [DUCT 500] [NEW] Air pattern deflections & debris ..... 24
- #484 [DUCT 999] [NEW] (MISC) - No Mastic at diffuser connections ..... 26
- #483 [DUCT 999] [NEW] (MISC) Restroom Grilles Not Flush ..... 27
- #482 [REFG 999] [NEW] (MISC) Condenser Short Cycling ..... 30
- #317 [EXHA 001] [NEW] CRITICAL – Grease duct access doors. .... 32
- #310 [CNTL 504] [NEW] Wire / cable management..... 34
- #306 [CURT 501] [NEW] Air curtain power. .... 36

#298 [DUCT 999] [NEW] - RTU-5 & 3 Zone Dampers ..... 38

#295 [UNIT 000] [EXIST] CRITICAL – Economizer not operational. RTU-4 ..... 40

#294 [UNIT 002] [EXIST] CRITICAL – Unit evaporator is plugged. RTU-2, RTU-3, RTU-4..... 42

#291 [DUCT 008] [EXIST] CRITICAL – Start collar damper orientation. RTU-4 Returns. .... 45

#290 [EXHA 500] [EXIST] Restroom rectangular duct riser. .... 48

#284 [UNIT 514] [EXIST] Equipment gas piping. .... 51

#282 [UNIT 524] [EXIST] Equipment cabinets need cleaning. RTU-3 ..... 54

#275 [EXHA 122] Exhaust fan fire caulking..... 56

#274 [UNIT 157] Outdoor air intakes..... 59

## #497 [UNIT 999] [EXIST] (MISC) - RTU-3 Final Filters

**Status**

Open

**Start Date**

Sep 12, 2025

**Type**

Planned Work

**Created**

Sep 12, 2025 6:19 AM  
stephent@nationaltab.com

**List**

TAB Punch List

**Last Updated**

Sep 12, 2025 6:19 AM

**Description**

RTU-3 has (4) 20x20x2 filters installed instead of the required (4) 20x25x2 filters. As a result there is ~10" of exposed evaporator coil.

**Photos**



IMG\_7696

**Stephen Tassinaro**

Sep 12, 2025 6:19 AM

## #496 [DUCT 499] [EXIST] CRITICAL – Dampers In Poor Condition/Unable to balance

**Status**

Open

**Start Date**

Sep 12, 2025

**Type**

Planned Work

**Created**

Sep 12, 2025 6:17 AM  
stephent@nationaltab.com

**List**

TAB Punch List

**Last Updated**

Sep 12, 2025 6:20 AM

**Description**

The existing dampers in the space are in poor condition. Several are already broken off and several more broke as soon as NTi attempted to make adjustments. Rust and corrosion is visible. Existing ductwork balanced for comfort and total flows only. This applies to RTUs 2 & 3.

**Photos**



IMG\_7646  
**Stephen Tassinaro**  
Sep 12, 2025 6:20 AM



IMG\_7644  
**Stephen Tassinaro**  
Sep 12, 2025 6:20 AM



IMG\_7645  
**Stephen Tassinaro**  
Sep 12, 2025 6:20 AM

### #495 [UNIT 999] [EXIST] (MISC) - RTU-2 Alarm

<b>Status</b> Open	<b>Start Date</b> Sep 12, 2025
<b>Type</b> Planned Work	<b>Created</b> Sep 12, 2025 6:17 AM stephent@nationaltab.com
<b>List</b> TAB Punch List	<b>Last Updated</b> Sep 12, 2025 6:20 AM

**Description**  
RTU-2 is alarming for outdoor enthalpy sensor.

#### Photos



IMG\_7689  
Stephen Tassinaro  
Sep 12, 2025 6:20 AM

---

### #494 [EXHA 001] [NEW] CRITICAL – Grease duct access doors open

<b>Status</b> Open	<b>Start Date</b> Sep 12, 2025
<b>Type</b> Planned Work	<b>Created</b> Sep 12, 2025 6:16 AM

**List**

stephent@nationaltab.com

TAB Punch List

**Last Updated**

Sep 12, 2025 6:16 AM

**Description**

Access door on HD-1R duct is missing its cover and is open to the ceiling. This needs to be replaced immediately. Other access panels are missing necessary hardware which will also need to be replaced. Verify ALL.

---

## #493 [UNIT 499] [NEW] CRITICAL - RTU-1 Alarms

**Status**

Open

**Start Date**

Sep 12, 2025

**Type**

Planned Work

**Created**

Sep 12, 2025 6:16 AM  
stephent@nationaltab.com

**List**

TAB Punch List

**Last Updated**

Sep 12, 2025 6:20 AM

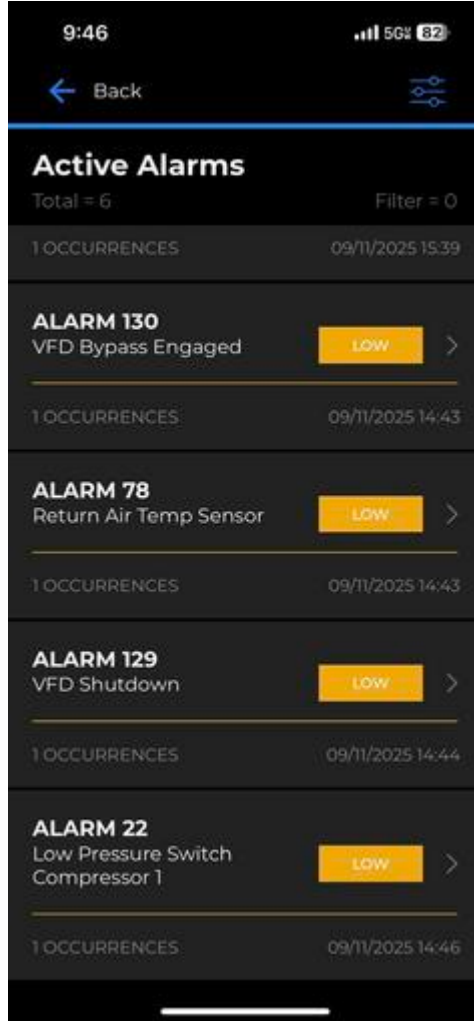
**Description**

RTU-1 has multiple critical alarms concerning the VFD and compressors. VFD has been bypassed prior to NTi arriving on site.

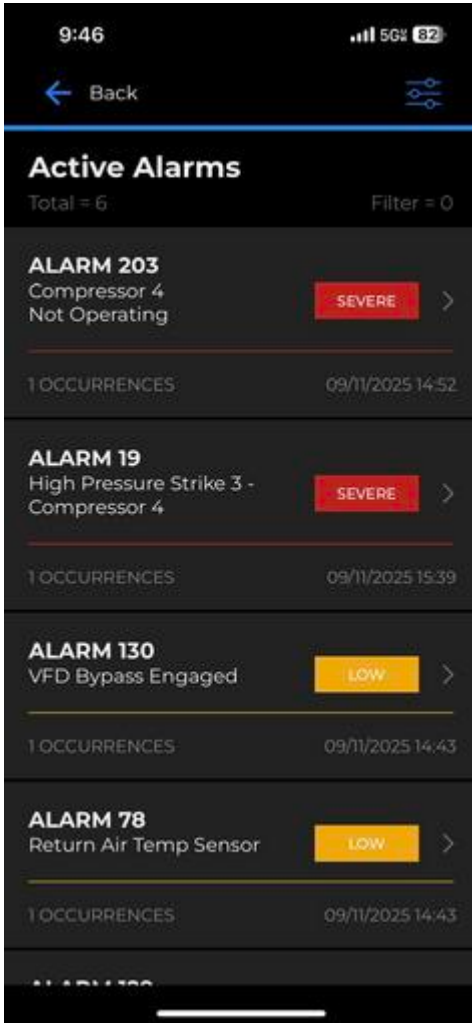
**Photos**



IMG\_7590  
**Stephen Tassinaro**  
Sep 12, 2025 6:20 AM



IMG\_7589  
**Stephen Tassinaro**  
Sep 12, 2025 6:20 AM



IMG\_7588

Stephen Tassinaro

Sep 12, 2025 6:20 AM

## #492 [DUCT 006] [NEW] CRITICAL – Flex duct installation RTU-1

**Status**

Open

**Start Date**

Sep 12, 2025

**Type**

Planned Work

**Created**

Sep 12, 2025 6:16 AM  
stephent@nationaltab.com

**List**

TAB Punch List

**Last Updated**

Sep 12, 2025 6:20 AM

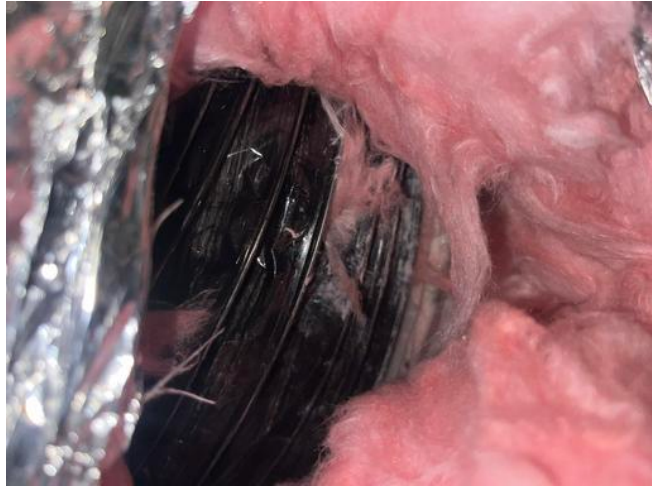
**Description**

Ensure flex inner core is taped and banded, along with tape or banding on outer insulation jacket.

**Photos**



IMG\_7680  
**Stephen Tassinaro**  
Sep 12, 2025 6:20 AM



IMG\_7682  
**Stephen Tassinaro**  
Sep 12, 2025 6:20 AM

## #491 [DUCT 010] [NEW] CRITICAL – Damper(s) missing hardware.

**Status**

Open

**Start Date**

Sep 12, 2025

**Type**

Planned Work

**Created**

Sep 12, 2025 6:16 AM  
stephent@nationaltab.com

**List**

TAB Punch List

**Last Updated**

Sep 12, 2025 6:21 AM

**Description**

RTU-3 new return damper missing hardware. Center return grille. Temporarily taped open for TAB.

**Photos**



IMG\_7642  
Stephen Tassinaro  
Sep 12, 2025 6:21 AM



IMG\_7643  
Stephen Tassinaro  
Sep 12, 2025 6:21 AM

### #490 [CNTL 017] [NEW] CRITICAL Thermostat terminations incorrect.

**Status**

Open

**Start Date**

Sep 12, 2025

**Type**

Planned Work

**Created**

Sep 12, 2025 6:16 AM  
stephent@nationaltab.com

**List**

TAB Punch List

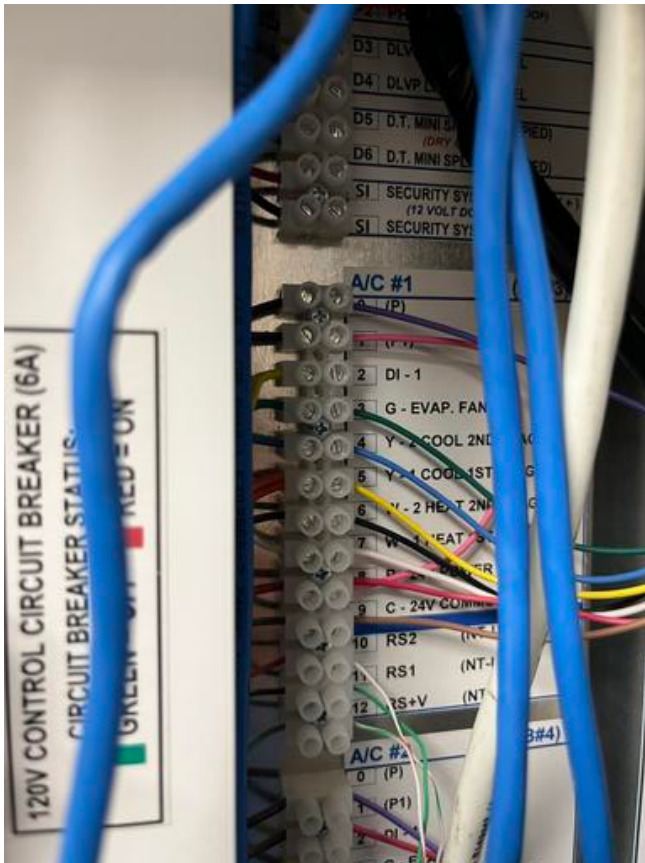
**Last Updated**

Sep 12, 2025 6:21 AM

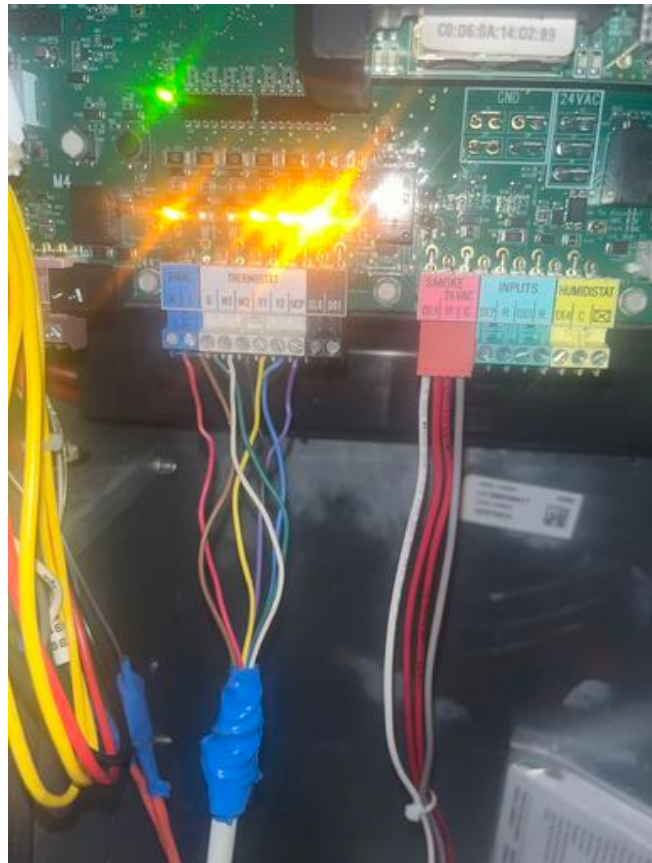
**Description**

D1 terminals not landed.

### Photos



IMG\_7605  
Stephen Tassinaro  
Sep 12, 2025 6:21 AM



IMG\_7595  
Stephen Tassinaro  
Sep 12, 2025 6:21 AM

## #489 [EXHA 512] [NEW] Exhaust fan not bolted to hat channel.

**Status**

Open

**Start Date**

Sep 12, 2025

**Type**

Planned Work

**Created**

Sep 12, 2025 6:16 AM  
stephent@nationaltab.com

**List**

TAB Punch List

**Last Updated**

Sep 12, 2025 6:22 AM

**Description**

Exhaust fan is to be securely bolted to hat channel per kitchen hood exhaust fan detail.

**Photos**



IMG\_7622  
Stephen Tassinaro  
Sep 12, 2025 6:22 AM

---

## #488 [EXHA 999] [NEW] KEF High Voltage Wiring

**Status**

Open

**Start Date**

Sep 12, 2025

**Type**

Planned Work

**Created**

Sep 12, 2025 6:16 AM  
stephent@nationaltab.com

**List**

TAB Punch List

**Last Updated**

Sep 12, 2025 6:16 AM

**Description**

The high voltage wiring for the kitchen exhaust fans does not appear to be correct. EF-2 (HD-2) is

landed at the EF-1 terminal.  
EF-1 and EF-4 are both  
landed at an unlabeled  
terminal (#37). The actual  
EF-2 terminal has a wire  
landed but there was no load  
measured.

---

## #487 [HOOD 508] [NEW] Sidejet arm angle bracket.

**Status**

Open

**Start Date**

Sep 12, 2025

**Type**

Planned Work

**Created**

Sep 12, 2025 6:16 AM  
stephent@nationaltab.com

**List**

TAB Punch List

**Last Updated**

Sep 12, 2025 6:23 AM

**Description**

The Halton supplied angle bracket that connects the integral sidejet arm to the counter is missing or not installed correctly. Secure bracket to arm and bracket to counter underneath removeable fry dump via stainless steel rivets.

**Comments**

HD2 and HD3

Stephen Tassinaro Sep 12, 2025

**Photos**



IMG\_7663

**Stephen Tassinaro**

Sep 12, 2025 6:23 AM

**#486 [HOOD 511] [NEW] Hood 1L/1R hardware.**

**Status**

Open

**Start Date**

Sep 12, 2025

**Type**

Planned Work

**Created**

Sep 12, 2025 6:16 AM  
stephent@nationaltab.com

**List**

TAB Punch List

**Last Updated**

Sep 12, 2025 6:23 AM

**Description**

Hoods 1L/1R are missing bolting hardware and / or the splice brackets that are to be installed at their midpoint connection seams.

**Photos**



IMG\_7661  
**Stephen Tassinaro**  
Sep 12, 2025 6:23 AM



IMG\_7662  
**Stephen Tassinaro**  
Sep 12, 2025 6:23 AM



IMG\_7660

**Stephen Tassinaro**

Sep 12, 2025 6:23 AM

---

## #485 [DUCT 500] [NEW] Air pattern deflections & debris

**Status**

Open

**Start Date**

Sep 12, 2025

**Type**

Planned Work

**Created**

Sep 12, 2025 6:16 AM  
stephent@nationaltab.com

**List**

TAB Punch List

**Last Updated**

Sep 12, 2025 6:24 AM

**Description**

Air pattern deflections are not adjusted per MSET and there is debris in the grilles throughout the space.

**Photos**



IMG\_7634

**Stephen Tassinaro**

Sep 12, 2025 6:24 AM

---

## #484 [DUCT 999] [NEW] (MISC) - No Mastic at diffuser connections

**Status**

Open

**Start Date**

Sep 12, 2025

**Type**

Planned Work

**Created**

Sep 12, 2025 6:16 AM  
stephent@nationaltab.com

**List**

TAB Punch List

**Last Updated**

Sep 12, 2025 6:24 AM

**Description**

No mastic was found at the rigid connections to the diffusers. New or existing.

**Photos**



IMG\_7681

Stephen Tassinaro

Sep 12, 2025 6:24 AM

## #483 [DUCT 999] [NEW] (MISC) Restroom Grilles Not Flush

**Status**

Open

**Start Date**

Sep 12, 2025

**Type**

Planned Work

**Created**

Sep 12, 2025 6:16 AM  
stephent@nationaltab.com

**List**

TAB Punch List

**Last Updated**

Sep 12, 2025 6:24 AM

**Description**

The supply and return grilles in the restroom are not mounted flush with the ceiling.

**Photos**



IMG\_7653  
**Stephen Tassinaro**  
Sep 12, 2025 6:24 AM



IMG\_7654  
**Stephen Tassinaro**  
Sep 12, 2025 6:24 AM



IMG\_7651

**Stephen Tassinaro**

Sep 12, 2025 6:24 AM

---

## #482 [REFG 999] [NEW] (MISC) Condenser Short Cycling

**Status**

Open

**Start Date**

Sep 12, 2025

**Type**

Planned Work

**Created**

Sep 12, 2025 6:16 AM  
stephent@nationaltab.com

**List**

TAB Punch List

**Last Updated**

Sep 12, 2025 6:25 AM

**Description**

The WIF condensing unit was short cycling while NTi was working on rooftop. WIF temp gauge was displaying 6F when this was occurring.

**Photos**



IMG\_7607

Stephen Tassinaro

Sep 12, 2025 6:25 AM

# #317 [EXHA 001] [NEW] CRITICAL – Grease duct access doors.

**Status**  
Open

**Start Date**  
Aug 18, 2025

**Sheet**  
M-301

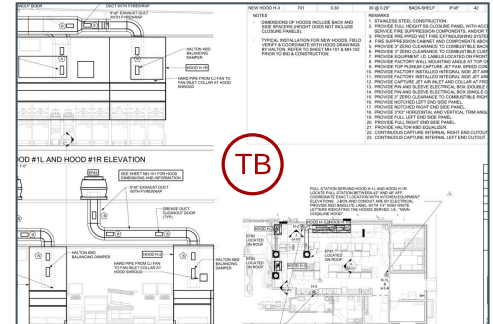
**Type**  
Planned Work

**Created**  
Aug 19, 2025 9:11 AM  
stephent@nationaltab.com

**List**  
TAB Punch List

**Last Updated**  
Aug 19, 2025 9:15 AM

**Description**  
Total number of access doors installed per grease duct is less than that shown on MSET.



## Comments

Attached photo is of Hood 3 grease duct, recommend verifying all grease ducts have correct access panels.

Stephen Tassinaro Aug 19, 2025

## Photos



IMG\_7177

**Stephen Tassinaro**

Aug 19, 2025 9:15 AM

## #310 [CNTL 504] [NEW] Wire / cable management.

**Status**

Open

**Start Date**

Aug 18, 2025

**Type**

Planned Work

**Created**

Aug 19, 2025 9:11 AM  
stephent@nationaltab.com

**List**

TAB Punch List

**Last Updated**

Sep 12, 2025 3:11 AM

**Description**

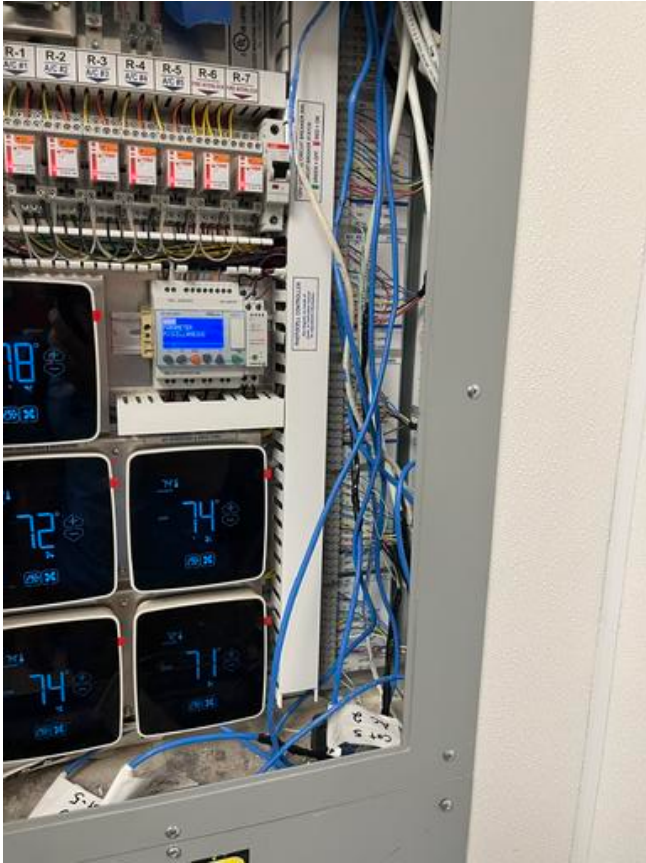
Wiring does not use correct cable management and is at extra risk of damage (beam clamps+bridal rings, wire loops for future service, runs perpendicular or parallel to structure supports).

**Comments**

Unresolved.

Stephen Tassinaro Sep 12, 2025

**Photos**



IMG\_7604  
**Stephen Tassinaro**  
Sep 12, 2025 3:11 AM



IMG\_7224  
**Stephen Tassinaro**  
Aug 19, 2025 9:19 AM

## #306 [CURT 501] [NEW] Air curtain power.

**Status**

Open

**Start Date**

Aug 18, 2025

**Type**

Planned Work

**Created**

Aug 19, 2025 9:11 AM  
stephent@nationaltab.com

**List**

TAB Punch List

**Last Updated**

Sep 12, 2025 3:12 AM

**Description**

Air curtain power does not cycle properly from local disconnect at time of TAB inspection.

**Comments**

Air curtain is now powered, but it runs constantly even in auto mode with the door closed.

Stephen Tassinaro Sep 12, 2025

**Photos**



306

**Riley Peterson**

Aug 23, 2025 12:25 PM

---

## #298 [DUCT 999] [NEW] - RTU-5 & 3 Zone Dampers

**Status**

Open

**Start Date**

Aug 18, 2025

**Type**

Planned Work

**Created**

Aug 19, 2025 9:11 AM  
stephent@nationaltab.com

**List**

TAB Punch List

**Last Updated**

Sep 12, 2025 3:15 AM

**Description**

Zone damper is not wired/  
functional.

**Comments**

Task remains open. There is no zone damper thermostat installed on the wall and therefore installation is incomplete.

Stephen Tassinaro Sep 12, 2025

This applies to both team member room zone damper and the office.

Stephen Tassinaro Sep 12, 2025

**Photos**



IMG\_7648  
**Stephen Tassinaro**  
Sep 12, 2025 3:15 AM



IMG\_7221  
**Stephen Tassinaro**  
Aug 19, 2025 9:23 AM

## #295 [UNIT 000] [EXIST] CRITICAL – Economizer not operational. RTU-4

**Status**

Open

**Start Date**

Aug 18, 2025

**Type**

Planned Work

**Created**

Aug 19, 2025 9:10 AM  
stephent@nationaltab.com

**List**

TAB Punch List

**Last Updated**

Sep 12, 2025 5:33 AM

**Description**

Economizer binding or not responding to setpoint commands properly. Unable to balance outside air at time of TAB inspection.

**Comments**

Damper not functional

Stephen Tassinaro Sep 12, 2025

**Photos**



IMG\_7693  
**Stephen Tassinaro**  
Sep 12, 2025 5:33 AM



IMG\_7206  
**Stephen Tassinaro**  
Aug 19, 2025 9:23 AM

## #294 [UNIT 002] [EXIST] CRITICAL – Unit evaporator is plugged. RTU-2, RTU-3, RTU-4

**Status**

Open

**Start Date**

Aug 18, 2025

**Type**

Planned Work

**Created**

Aug 19, 2025 9:10 AM  
stephent@nationaltab.com

**List**

TAB Punch List

**Last Updated**

Aug 19, 2025 9:23 AM

**Description**

Unit evaporator is clogged with debris and must be cleaned before balance can continue.

**Comments**

All existing units still have dirty evap coils

Stephen Tassinaro Sep 12, 2025

**Photos**



IMG\_7194  
**Stephen Tassinaro**  
Aug 19, 2025 9:23 AM



IMG\_7204  
**Stephen Tassinaro**  
Aug 19, 2025 9:23 AM



IMG\_7183

**Stephen Tassinaro**

Aug 19, 2025 9:23 AM

---

## #291 [DUCT 008] [EXIST] CRITICAL – Start collar damper orientation. RTU-4 Returns.

**Status**

Open

**Start Date**

Aug 18, 2025

**Type**

Planned Work

**Created**

Aug 19, 2025 9:10 AM  
stephent@nationaltab.com

**List**

TAB Punch List

**Last Updated**

Sep 12, 2025 3:20 AM

**Description**

Dampers to be installed parallel to airflow. In horizontal runs, position damper on left or right at 9 or 3 o'clock. On vertical ducts position damper on bottom only (6 o'clock).

**Comments**

Unresolved

Stephen Tassinaro Sep 12, 2025

**Photos**



IMG\_7673

**Stephen Tassinaro**

Sep 12, 2025 3:20 AM



IMG\_7674

**Stephen Tassinaro**

Sep 12, 2025 3:20 AM



IMG\_7175

**Stephen Tassinaro**

Aug 19, 2025 9:24 AM

## #290 [EXHA 500] [EXIST] Restroom rectangular duct riser.

**Status**

Open

**Start Date**

Aug 18, 2025

**Type**

Planned Work

**Created**

Aug 19, 2025 9:10 AM  
stephent@nationaltab.com

**List**

TAB Punch List

**Last Updated**

Sep 12, 2025 5:42 AM

**Description**

Restroom exhaust rectangular duct riser is missing backdraft damper and roof liner was not trimmed correctly.

**Comments**

Task opened. Damper does not open and close freely.

Stephen Tassinaro Sep 12, 2025

**Photos**



IMG\_7703

**Stephen Tassinaro**

Sep 12, 2025 5:42 AM



IMG\_7216

**Stephen Tassinaro**

Aug 19, 2025 9:24 AM



IMG\_7214

**Stephen Tassinaro**

Aug 19, 2025 9:24 AM

## #284 [UNIT 514] [EXIST] Equipment gas piping.

**Status**

Open

**Start Date**

Aug 18, 2025

**Type**

Planned Work

**Created**

Aug 19, 2025 9:10 AM  
stephent@nationaltab.com

**List**

TAB Punch List

**Last Updated**

Sep 11, 2025 10:21 PM

**Description**

Equipment gas piping is not completed.

**Comments**

Task re-opened. All gas valves in closed positions.

Stephen Tassinaro Sep 11, 2025

**Photos**



IMG\_7202

**Stephen Tassinaro**

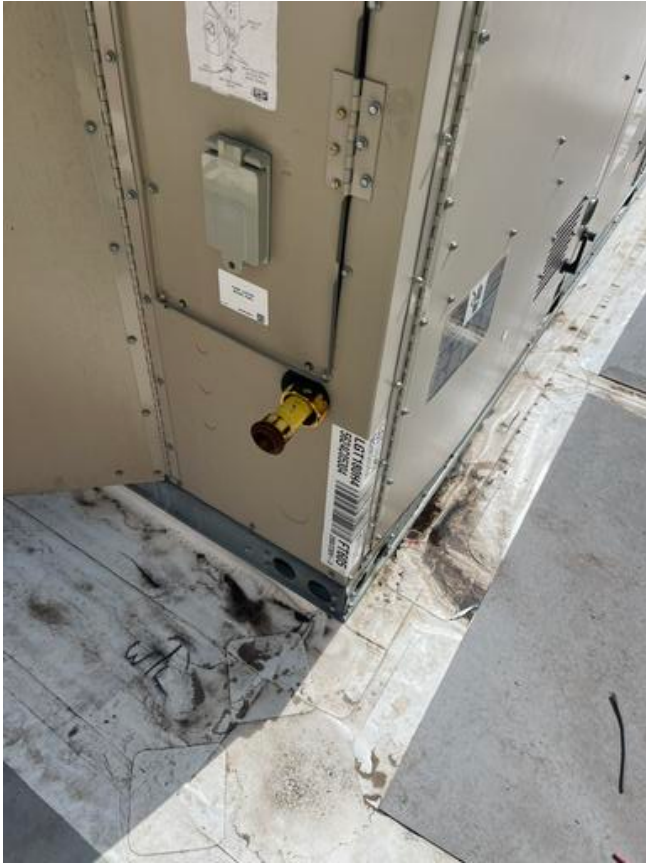
Aug 19, 2025 9:26 AM



IMG\_7210

**Stephen Tassinaro**

Aug 19, 2025 9:26 AM



IMG\_7147  
**Stephen Tassinaro**  
Aug 19, 2025 9:26 AM



IMG\_7188  
**Stephen Tassinaro**  
Aug 19, 2025 9:26 AM

## #282 [UNIT 524] [EXIST] Equipment cabinets need cleaning. RTU-3

**Status**

Open

**Start Date**

Aug 18, 2025

**Type**

Planned Work

**Created**

Aug 19, 2025 9:10 AM  
stephent@nationaltab.com

**List**

TAB Punch List

**Last Updated**

Aug 19, 2025 9:27 AM

**Description**

Equipment cabinets are dirty and needs to be cleaned.

**Comments**

Unresolved

Stephen Tassinaro Sep 12, 2025

**Photos**



IMG\_7193  
**Stephen Tassinaro**  
Aug 19, 2025 9:27 AM



IMG\_7191  
**Stephen Tassinaro**  
Aug 19, 2025 9:27 AM

## #275 [EXHA 122] Exhaust fan fire caulking

**Status**

Open

**Start Date**

Jul 24, 2025

**Type**

Planned Work

**Created**

Aug 1, 2025 9:48 AM  
markj@nationaltab.com

**List**

TAB Punch List

**Last Updated**

Sep 12, 2025 1:37 AM

**Description**

All hood exhaust fans are missing fire caulking.

**Comments**

Installed caulking is not the typical red coloration of fire caulking. Requesting verification this is a high temp fire caulk That will not break down from heat and grease.

Stephen Tassinaro Sep 12, 2025

**Photos**



275

**Riley Peterson**

Aug 26, 2025 8:46 AM



IMG\_4412

**Mark Johnson**

Aug 1, 2025 9:56 AM



IMG\_4413

**Mark Johnson**

Aug 1, 2025 9:56 AM

## #274 [UNIT 157] Outdoor air intakes.

**Status**

Open

**Start Date**

Jul 24, 2025

**Type**

Planned Work

**Created**

Aug 1, 2025 9:48 AM  
markj@nationaltab.com

**List**

TAB Punch List

**Last Updated**

Aug 1, 2025 9:58 AM

**Description**

OA hood not yet installed in AC 5. Missing OAI caulking for AC 1 and AC 3.

**Comments**

RTU-5 OA hood installed. Caulking still pending.

Stephen Tassinaro Sep 12, 2025

**Photos**



IMG\_4346

**Mark Johnson**

Aug 1, 2025 9:57 AM



IMG\_4343

**Mark Johnson**

Aug 1, 2025 9:57 AM



IMG\_4339

**Mark Johnson**

Aug 1, 2025 9:57 AM