

PlanGrid Task Report - Oct 6, 2025

Prepared by Stephen Tassinaro

Oct 5, 2025

Description

27 tasks in this report.

Contents

#499 [SITE 010] [NEW] CRITICAL – Return visit required.	3
#498 [UNIT 999] [NEW] - RTU-1 Belt Size Incorrect.....	4
#497 [UNIT 999] [EXIST] (MISC) - RTU-3 Final Filters	5
#496 [DUCT 499] [EXIST] CRITICAL – Dampers In Poor Condition/Unable to balance	7
#495 [UNIT 999] [EXIST] (MISC) - RTU-2 Alarm	9
#494 [EXHA 001] [NEW] CRITICAL – Grease duct access doors open	10
#493 [UNIT 499] [NEW] CRITICAL - RTU-1 Alarms.....	14
#492 [DUCT 006] [NEW] CRITICAL – Flex duct installation RTU-1.....	17
#491 [DUCT 010] [NEW] CRITICAL – Damper(s) missing hardware.	20
#490 [CNTL 017] [NEW] CRITICAL Thermostat terminations incorrect.....	22
#489 [EXHA 512] [NEW] Exhaust fan not bolted to hat channel.....	25
#488 [EXHA 999] [NEW] KEF High Voltage Wiring.....	27
#487 [HOOD 508] [NEW] Sidejet arm angle bracket.	29
#486 [HOOD 511] [NEW] Hood 1L/1R hardware.	32
#485 [DUCT 500] [NEW] Air pattern deflections & debris	35
#484 [DUCT 999] [NEW] (MISC) - No Mastic at diffuser connections	37
#482 [REFG 999] [NEW] (MISC) Condenser Short Cycling	39
#317 [EXHA 001] [NEW] CRITICAL – Grease duct access doors.	42
#306 [CURT 501] [NEW] Air curtain power.	44

#298 [DUCT 999] [NEW] - RTU-5 & 3 Zone Dampers 46

#295 [UNIT 000] [EXIST] CRITICAL – Economizer not operational. RTU-4 49

#294 [UNIT 002] [EXIST] CRITICAL – Unit evaporator is plugged. RTU-2, RTU-3, RTU-4..... 51

#291 [DUCT 008] [EXIST] CRITICAL – Start collar damper orientation. RTU-4 Returns. 55

#290 [EXHA 500] [EXIST] Restroom rectangular duct riser. 58

#285 [UNIT 513] [EXIST] Equipment is damaged. RTU-2 Prodigy Board 61

#282 [UNIT 524] [EXIST] Equipment cabinets need cleaning. RTU-3 63

#275 [EXHA 122] Exhaust fan fire caulking..... 65

#499 [SITE 010] [NEW] CRITICAL – Return visit required.

Status

Open

Start Date

Oct 5, 2025

Type

Planned Work

Created

Oct 5, 2025 8:57 PM
stephent@nationaltab.com

List

TAB Punch List

Last Updated

Oct 5, 2025 8:57 PM

Description

Due to the CRITICAL tasks, a return TAB visit is required. Once all Tasks are completed and correction photos imported to PG, reach out to the TAB Supervisor for confirmation and scheduling the revisit. Contact the TAB Supervisor if a TAB report is needed for CO or for further diagnostics.

#498 [UNIT 999] [NEW] - RTU-1 Belt Size Incorrect

Status

Open

Start Date

Sep 12, 2025

Type

Planned Work

Created

Sep 12, 2025 9:14 AM
stephent@nationaltab.com

List

TAB Punch List

Last Updated

Oct 5, 2025 8:28 PM

Description

A BX70 belt is currently installed in RTU-1 and it is too long. Recommend a BX68 replacement and adjusting the motor position accordingly.

Comments

Unresolved.

Stephen Tassinaro Oct 5, 2025

Photos



IMG_8037

Stephen Tassinaro

Oct 5, 2025 8:28 PM

#497 [UNIT 999] [EXIST] (MISC) - RTU-3 Final Filters

Status

Open

Start Date

Sep 12, 2025

Type

Planned Work

Created

Sep 12, 2025 6:19 AM
stephent@nationaltab.com

List

TAB Punch List

Last Updated

Oct 5, 2025 8:29 PM

Description

RTU-3 has (4) 20x20x2 filters installed instead of the required (4) 20x25x2 filters. As a result there is ~10" of exposed evaporator coil.

Comments

Unresolved.

Stephen Tassinaro Oct 5, 2025

Photos



IMG_8028

Stephen Tassinaro

Oct 5, 2025 8:29 PM



IMG_7696

Stephen Tassinaro

Sep 12, 2025 6:19 AM

#496 [DUCT 499] [EXIST] CRITICAL – Dampers In Poor Condition/Unable to balance

Status

Open

Start Date

Sep 12, 2025

Type

Planned Work

Created

Sep 12, 2025 6:17 AM
stephent@nationaltab.com

List

TAB Punch List

Last Updated

Oct 5, 2025 8:29 PM

Description

The existing dampers in the space are in poor condition. Several are already broken off and several more broke as soon as NTi attempted to make adjustments. Rust and corrosion is visible. Existing ductwork balanced for comfort and total flows only. This applies to RTUs 2 & 3.

Comments

Unresolved. Further attempts to adjust dampers immediately resulted in handles starting to break off. No further adjustments can be made to any of the existing ductwork.

Stephen Tassinaro Oct 5, 2025

Photos



IMG_7977
Stephen Tassinaro
Oct 5, 2025 8:29 PM



IMG_7646
Stephen Tassinaro
Sep 12, 2025 6:20 AM



IMG_7644
Stephen Tassinaro
Sep 12, 2025 6:20 AM



IMG_7645
Stephen Tassinaro
Sep 12, 2025 6:20 AM

#495 [UNIT 999] [EXIST] (MISC) - RTU-2 Alarm

Status

Open

Start Date

Sep 12, 2025

Type

Planned Work

Created

Sep 12, 2025 6:17 AM
stephent@nationaltab.com

List

TAB Punch List

Last Updated

Sep 12, 2025 6:20 AM

Description

RTU-2 is alarming for outdoor enthalpy sensor.

Comments

Unresolved.

Stephen Tassinaro Oct 5, 2025

Photos



IMG_7689

Stephen Tassinaro

Sep 12, 2025 6:20 AM

#494 [EXHA 001] [NEW] CRITICAL – Grease duct access doors open

Status

Open

Start Date

Sep 12, 2025

Type

Planned Work

Created

Sep 12, 2025 6:16 AM
stephent@nationaltab.com

List

TAB Punch List

Last Updated

Oct 5, 2025 8:31 PM

Description

Access door on HD-1R duct is missing its cover and is open to the ceiling. This needs to be replaced immediately. Other access panels are missing necessary hardware which will also need to be replaced. Verify ALL.

Comments

Several other access panels do not have all of their hardware. Inspect ALL panels.

Stephen Tassinaro Sep 12, 2025

The door was replaced with a piece of sheet metal, that was then self tapered into the flange with no gasket. NONE of the access doors have gaskets installed, nor a complete set of hardware.

Stephen Tassinaro Oct 5, 2025

Photos



IMG_7988

Stephen Tassinaro
Oct 5, 2025 8:31 PM



IMG_7987

Stephen Tassinaro
Oct 5, 2025 8:31 PM



IMG_7989

Stephen Tassinaro
Oct 5, 2025 8:31 PM



IMG_7986

Stephen Tassinaro
Oct 5, 2025 8:31 PM



IMG_7980

Stephen Tassinaro
Oct 5, 2025 8:31 PM



IMG_7985

Stephen Tassinaro
Oct 5, 2025 8:31 PM



IMG_7979

Stephen Tassinaro
Oct 5, 2025 8:31 PM



IMG_7981

Stephen Tassinaro
Oct 5, 2025 8:31 PM



4709517011003826564

Stephen Tassinaro

Sep 14, 2025 8:05 PM

#493 [UNIT 499] [NEW] CRITICAL - RTU-1 Alarms

Status

Open

Start Date

Sep 12, 2025

Type

Planned Work

Created

Sep 12, 2025 6:16 AM
stephent@nationaltab.com

List

TAB Punch List

Last Updated

Sep 12, 2025 6:20 AM

Description

RTU-1 has multiple critical alarms concerning the VFD and compressors. VFD has been bypassed prior to NTi arriving on site.

Comments

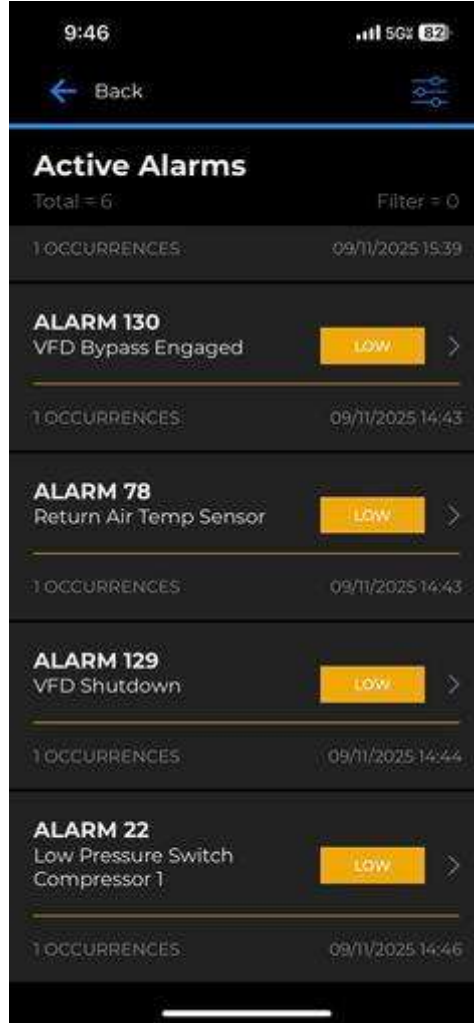
All alarms are still present. Unit needs service ASAP.

Stephen Tassinaro Oct 5, 2025

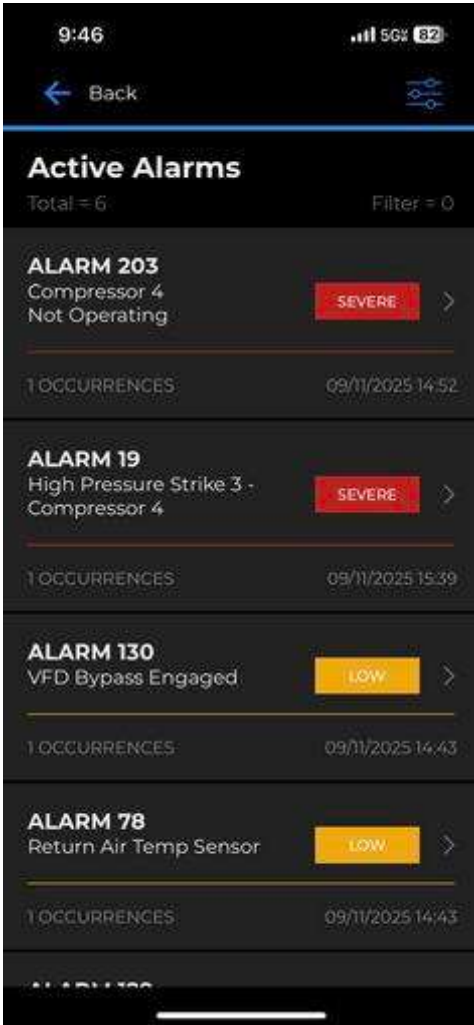
Photos



IMG_7590
Stephen Tassinaro
Sep 12, 2025 6:20 AM



IMG_7589
Stephen Tassinaro
Sep 12, 2025 6:20 AM



IMG_7588

Stephen Tassinaro

Sep 12, 2025 6:20 AM

#492 [DUCT 006] [NEW] CRITICAL – Flex duct installation RTU-1

Status

Open

Start Date

Sep 12, 2025

Type

Planned Work

Created

Sep 12, 2025 6:16 AM
stephent@nationaltab.com

List

TAB Punch List

Last Updated

Oct 5, 2025 8:35 PM

Description

Ensure flex inner core is taped and banded, along with tape or banding on outer insulation jacket.

Comments

Mastic has been applied to the outer insulation jacket but the inner cores only have draw bands to secure them.

Stephen Tassinaro Oct 5, 2025

Photos



IMG_8055

Stephen Tassinaro

Oct 5, 2025 8:35 PM



IMG_7999

Stephen Tassinaro

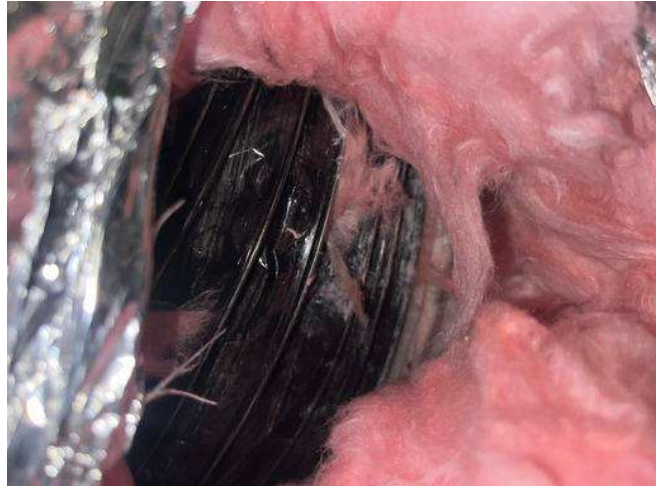
Oct 5, 2025 8:35 PM



IMG_7680

Stephen Tassinaro

Sep 12, 2025 6:20 AM



IMG_7682

Stephen Tassinaro

Sep 12, 2025 6:20 AM

#491 [DUCT 010] [NEW] CRITICAL – Damper(s) missing hardware.

Status

Open

Start Date

Sep 12, 2025

Type

Planned Work

Created

Sep 12, 2025 6:16 AM
stephent@nationaltab.com

List

TAB Punch List

Last Updated

Oct 5, 2025 8:35 PM

Description

RTU-3 new return damper missing hardware. Center return grille. Temporarily taped open for TAB.

Comments

Unresolved.

Stephen Tassinaro Oct 5, 2025

Photos



IMG_8001

Stephen Tassinaro

Oct 5, 2025 8:35 PM



IMG_7642

Stephen Tassinaro

Sep 12, 2025 6:21 AM



IMG_7643

Stephen Tassinaro

Sep 12, 2025 6:21 AM

#490 [CNTL 017] [NEW] CRITICAL Thermostat terminations incorrect.

Status

Open

Start Date

Sep 12, 2025

Type

Planned Work

Created

Sep 12, 2025 6:16 AM
stephent@nationaltab.com

List

TAB Punch List

Last Updated

Oct 5, 2025 8:36 PM

Description

D1 terminals not landed.

Comments

Unresolved.

Stephen Tassinaro Oct 5, 2025

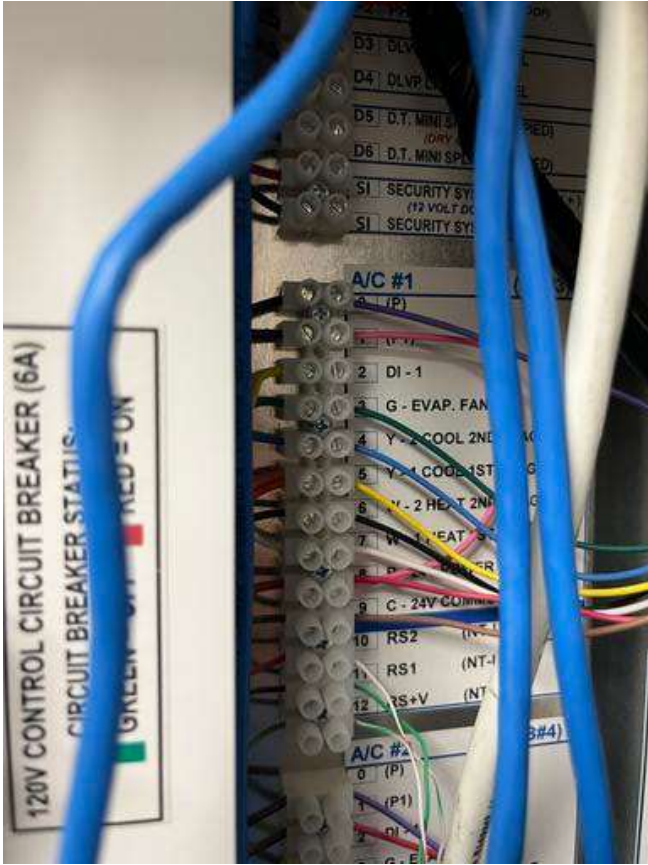
Photos



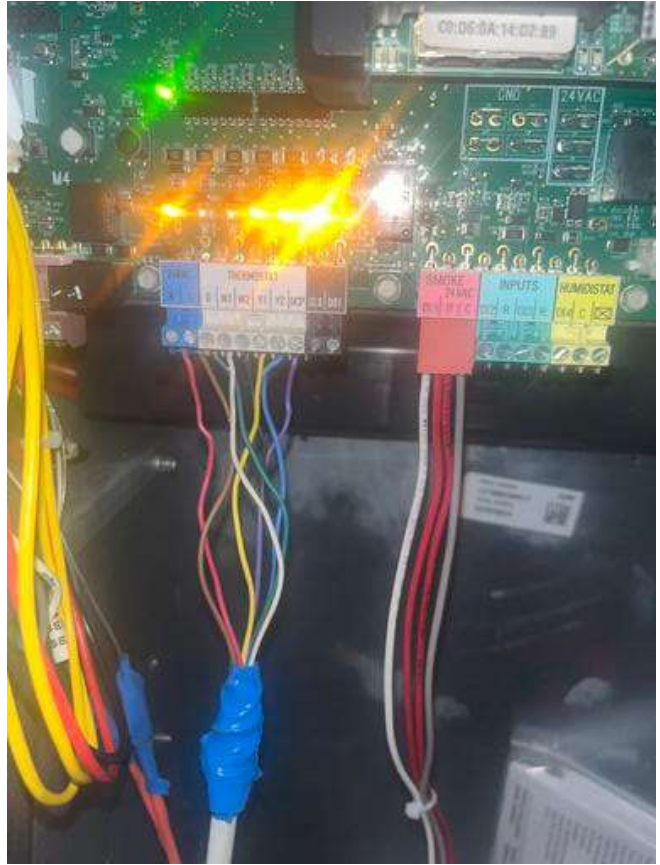
IMG_8033
Stephen Tassinaro
Oct 5, 2025 8:36 PM



IMG_8013
Stephen Tassinaro
Oct 5, 2025 8:36 PM



IMG_7605
Stephen Tassinaro
Sep 12, 2025 6:21 AM



IMG_7595
Stephen Tassinaro
Sep 12, 2025 6:21 AM

#489 [EXHA 512] [NEW] Exhaust fan not bolted to hat channel.

Status

Open

Start Date

Sep 12, 2025

Type

Planned Work

Created

Sep 12, 2025 6:16 AM
stephent@nationaltab.com

List

TAB Punch List

Last Updated

Oct 5, 2025 8:36 PM

Description

Exhaust fan is to be securely bolted to hat channel per kitchen hood exhaust fan detail.

Comments

Unresolved.

Stephen Tassinaro Oct 5, 2025

Photos



IMG_8027

Stephen Tassinaro

Oct 5, 2025 8:36 PM



IMG_7622

Stephen Tassinaro

Sep 12, 2025 6:22 AM

#488 [EXHA 999] [NEW] KEF High Voltage Wiring

Status

Open

Start Date

Sep 12, 2025

Type

Planned Work

Created

Sep 12, 2025 6:16 AM
stephent@nationaltab.com

List

TAB Punch List

Last Updated

Oct 5, 2025 8:37 PM

Description

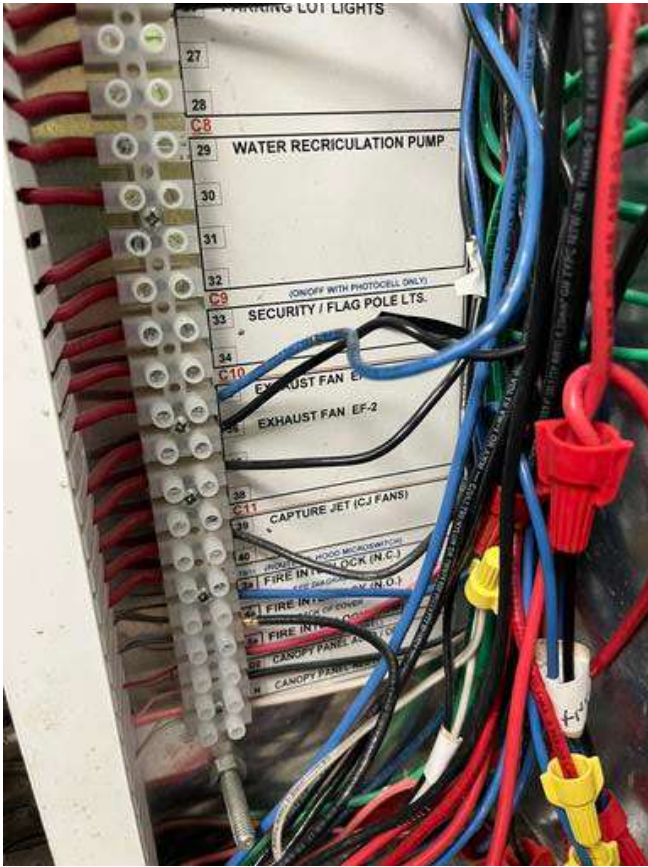
The high voltage wiring for the kitchen exhaust fans does not appear to be correct. EF-2 (HD-2) is landed at the EF-1 terminal. EF-1 and EF-4 are both landed at an unlabeled terminal (#37). The actual EF-2 terminal has a wire landed but there was no load measured.

Comments

Unresolved.

Stephen Tassinaro Oct 5, 2025

Photos



IMG_8004

Stephen Tassinaro

Oct 5, 2025 8:36 PM

#487 [HOOD 508] [NEW] Sidejet arm angle bracket.

Status

Open

Start Date

Sep 12, 2025

Type

Planned Work

Created

Sep 12, 2025 6:16 AM
stephent@nationaltab.com

List

TAB Punch List

Last Updated

Oct 5, 2025 8:37 PM

Description

The Halton supplied angle bracket that connects the integral sidejet arm to the counter is missing or not installed correctly. Secure bracket to arm and bracket to counter underneath removeable fry dump via stainless steel rivets.

Comments

HD2 and HD3

Stephen Tassinaro Sep 12, 2025

Unresolved.

Stephen Tassinaro Oct 5, 2025

Photos



IMG_8006
Stephen Tassinaro
Oct 5, 2025 8:37 PM



IMG_8005
Stephen Tassinaro
Oct 5, 2025 8:37 PM



IMG_7663

Stephen Tassinaro

Sep 12, 2025 6:23 AM

#486 [HOOD 511] [NEW] Hood 1L/1R hardware.

Status

Open

Start Date

Sep 12, 2025

Type

Planned Work

Created

Sep 12, 2025 6:16 AM
stephent@nationaltab.com

List

TAB Punch List

Last Updated

Sep 12, 2025 6:23 AM

Description

Hoods 1L/1R are missing bolting hardware and / or the splice brackets that are to be installed at their midpoint connection seams.

Comments

Unresolved.

Stephen Tassinaro Oct 5, 2025

Photos



IMG_7661
Stephen Tassinaro
Sep 12, 2025 6:23 AM



IMG_7662
Stephen Tassinaro
Sep 12, 2025 6:23 AM



IMG_7660

Stephen Tassinaro

Sep 12, 2025 6:23 AM

#485 [DUCT 500] [NEW] Air pattern deflections & debris

Status

Open

Start Date

Sep 12, 2025

Type

Planned Work

Created

Sep 12, 2025 6:16 AM
stephent@nationaltab.com

List

TAB Punch List

Last Updated

Sep 12, 2025 6:24 AM

Description

Air pattern deflections are not adjusted per MSET and there is debris in the grilles throughout the space.

Comments

Deflectors are still not adjusted uniformly, nor directed per plan.

Stephen Tassinaro Oct 5, 2025

Photos



IMG_7634

Stephen Tassinaro

Sep 12, 2025 6:24 AM

#484 [DUCT 999] [NEW] (MISC) - No Mastic at diffuser connections

Status

Open

Start Date

Sep 12, 2025

Type

Planned Work

Created

Sep 12, 2025 6:16 AM
stephent@nationaltab.com

List

TAB Punch List

Last Updated

Oct 5, 2025 8:39 PM

Description

No mastic was found at the rigid connections to the diffusers. New or existing.

Comments

MC has begun to apply mastic to the outer insulation jackets, but the rigid connection within does not have mastic.

Stephen Tassinaro Oct 5, 2025

Photos



IMG_8055
Stephen Tassinaro
Oct 5, 2025 8:39 PM



IMG_8011
Stephen Tassinaro
Oct 5, 2025 8:39 PM



IMG_7681
Stephen Tassinaro
Sep 12, 2025 6:24 AM

#482 [REFG 999] [NEW] (MISC) Condenser Short Cycling

Status

Open

Start Date

Sep 12, 2025

Type

Planned Work

Created

Sep 12, 2025 6:16 AM
stephent@nationaltab.com

List

TAB Punch List

Last Updated

Oct 5, 2025 8:41 PM

Description

The WIF condensing unit was short cycling while NTi was working on rooftop. WIF temp gauge was displaying 6F when this was occurring.

Comments

No short cycling was noticed during TAB visit, however the exterior gauges on the coolers each read approximately 5F warmer than the actual WIC/WIF temp. WIF was 0F, gauge was 6F. WIC was 36F, gauge was 41F. Recommend calibration to avoid confusion.

Stephen Tassinaro Oct 5, 2025

Photos



IMG_8050

Stephen Tassinaro

Oct 5, 2025 8:41 PM



IMG_8049

Stephen Tassinaro

Oct 5, 2025 8:41 PM



IMG_7607

Stephen Tassinaro

Sep 12, 2025 6:25 AM

#317 [EXHA 001] [NEW] CRITICAL – Grease duct access doors.

Status
Open

Start Date
Aug 18, 2025

Sheet
M-301

Type
Planned Work

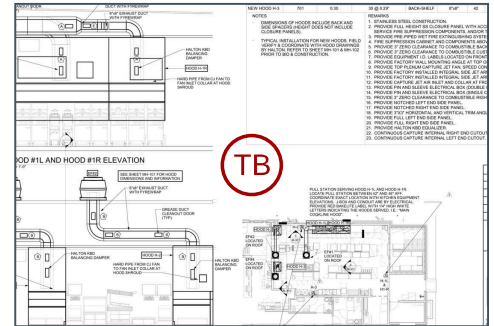
Created
Aug 19, 2025 9:11 AM
stephent@nationaltab.com

List
TAB Punch List

Last Updated
Oct 5, 2025 8:43 PM

Description

Total number of access doors installed per grease duct is less than that shown on MSET.



Comments

Attached photo is of Hood 3 grease duct, recommend verifying all grease ducts have correct access panels.

Stephen Tassinaro Aug 19, 2025

Hood 3 duct has 1 of 3 grease cleanout doors. Hood 2 has 3 of 4 grease cleanout doors. None of the access doors have appropriate hardware or gaskets. Review all.

Stephen Tassinaro Oct 5, 2025

Photos



IMG_7995

Stephen Tassinaro
Oct 5, 2025 8:43 PM



IMG_7993

Stephen Tassinaro
Oct 5, 2025 8:43 PM



IMG_7177

Stephen Tassinaro
Aug 19, 2025 9:15 AM

#306 [CURT 501] [NEW] Air curtain power.

Status

Open

Start Date

Aug 18, 2025

Type

Planned Work

Created

Aug 19, 2025 9:11 AM
stephent@nationaltab.com

List

TAB Punch List

Last Updated

Oct 5, 2025 8:45 PM

Description

Air curtain power does not cycle properly from local disconnect at time of TAB inspection.

Comments

Air curtain is now powered, but it runs constantly even in auto mode with the door closed.

Stephen Tassinaro Sep 12, 2025

This has not been resolved. Staff is turning dial to "0" to stop the fan.

Stephen Tassinaro Oct 5, 2025

Photos



IMG_8014

Stephen Tassinaro
Oct 5, 2025 8:45 PM
[Download video](#)



IMG_8015

Stephen Tassinaro
Oct 5, 2025 8:45 PM



306

Riley Peterson
Aug 23, 2025 12:25 PM

#298 [DUCT 999] [NEW] - RTU-5 & 3 Zone Dampers

Status

Open

Start Date

Aug 18, 2025

Type

Planned Work

Created

Aug 19, 2025 9:11 AM
stephent@nationaltab.com

List

TAB Punch List

Last Updated

Oct 5, 2025 8:46 PM

Description

Zone damper is not wired/
functional.

Comments

Task remains open. There is no zone damper thermostat installed on the wall and therefore installation is incomplete.

Stephen Tassinaro Sep 12, 2025

This applies to both team member room zone damper and the office.

Stephen Tassinaro Sep 12, 2025

Unresolved.

Stephen Tassinaro Oct 5, 2025

Photos



IMG_8017

Stephen Tassinaro

Oct 5, 2025 8:46 PM



IMG_7648

Stephen Tassinaro

Sep 12, 2025 3:15 AM



IMG_7221

Stephen Tassinaro

Aug 19, 2025 9:23 AM

#295 [UNIT 000] [EXIST] CRITICAL – Economizer not operational. RTU-4

Status

Open

Start Date

Aug 18, 2025

Type

Planned Work

Created

Aug 19, 2025 9:10 AM
stephent@nationaltab.com

List

TAB Punch List

Last Updated

Sep 12, 2025 5:33 AM

Description

Economizer binding or not responding to setpoint commands properly. Unable to balance outside air at time of TAB inspection.

Comments

Damper not functional

Stephen Tassinaro Sep 12, 2025

Unresolved. Damper set manually but recommend reverifying once the coil is cleaned and Economizer repaired.

Stephen Tassinaro Oct 5, 2025

Photos



IMG_7693
Stephen Tassinaro
Sep 12, 2025 5:33 AM



IMG_7206
Stephen Tassinaro
Aug 19, 2025 9:23 AM

#294 [UNIT 002] [EXIST] CRITICAL – Unit evaporator is plugged. RTU-2, RTU-3, RTU-4

Status

Open

Start Date

Aug 18, 2025

Type

Planned Work

Created

Aug 19, 2025 9:10 AM
stephent@nationaltab.com

List

TAB Punch List

Last Updated

Oct 5, 2025 8:48 PM

Description

Unit evaporator is clogged with debris and must be cleaned before balance can continue.

Comments

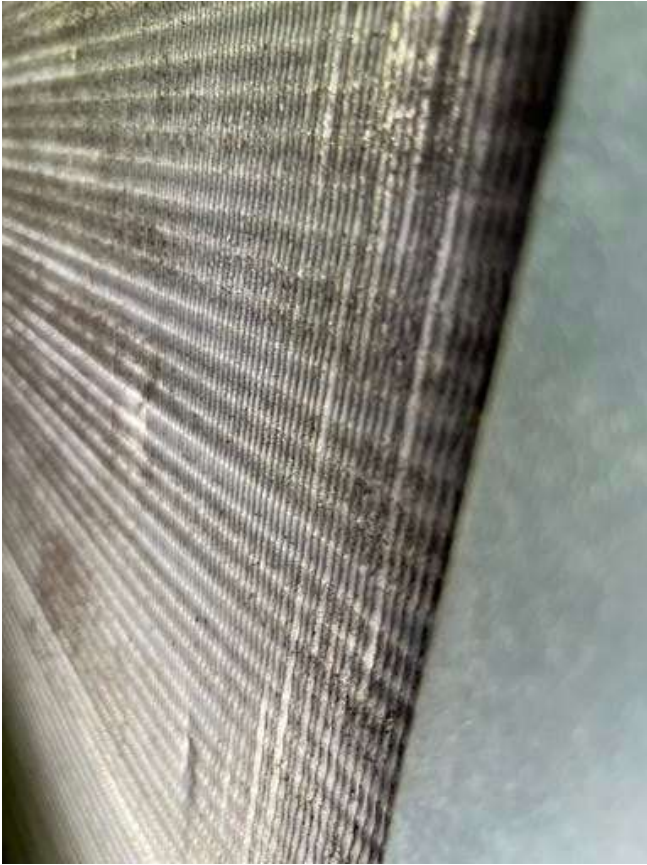
All existing units still have dirty evap coils

Stephen Tassinaro Sep 12, 2025

Unresolved. Particularly high fan suction pressure on RTU-3 (-1.18”) but all units will benefit from deep cleaning.

Stephen Tassinaro Oct 5, 2025

Photos



IMG_8031

Stephen Tassinaro

Oct 5, 2025 8:48 PM



IMG_8029

Stephen Tassinaro

Oct 5, 2025 8:48 PM



IMG_7194
Stephen Tassinaro
Aug 19, 2025 9:23 AM



IMG_7204
Stephen Tassinaro
Aug 19, 2025 9:23 AM



IMG_7183

Stephen Tassinaro

Aug 19, 2025 9:23 AM

#291 [DUCT 008] [EXIST] CRITICAL – Start collar damper orientation. RTU-4 Returns.

Status

Open

Start Date

Aug 18, 2025

Type

Planned Work

Created

Aug 19, 2025 9:10 AM
stephent@nationaltab.com

List

TAB Punch List

Last Updated

Sep 12, 2025 3:20 AM

Description

Dampers to be installed parallel to airflow. In horizontal runs, position damper on left or right at 9 or 3 o'clock. On vertical ducts position damper on bottom only (6 o'clock).

Comments

Unresolved

Stephen Tassinaro Sep 12, 2025

Unresolved and damper handles are brittle. Unable to adjust or lock in position.

Stephen Tassinaro Oct 5, 2025

Photos



IMG_7673

Stephen Tassinaro

Sep 12, 2025 3:20 AM



IMG_7674

Stephen Tassinaro

Sep 12, 2025 3:20 AM



IMG_7175

Stephen Tassinaro

Aug 19, 2025 9:24 AM

#290 [EXHA 500] [EXIST] Restroom rectangular duct riser.

Status

Open

Start Date

Aug 18, 2025

Type

Planned Work

Created

Aug 19, 2025 9:10 AM
stephent@nationaltab.com

List

TAB Punch List

Last Updated

Oct 5, 2025 8:49 PM

Description

Restroom exhaust rectangular duct riser is missing backdraft damper and roof liner was not trimmed correctly.

Comments

Task opened. Damper does not open and close freely.

Stephen Tassinaro Sep 12, 2025

Damper still does not move freely.

Stephen Tassinaro Oct 5, 2025

Photos



IMG_8024

Stephen Tassinaro

Oct 5, 2025 8:49 PM



IMG_7703

Stephen Tassinaro

Sep 12, 2025 5:42 AM



IMG_7216
Stephen Tassinaro
Aug 19, 2025 9:24 AM



IMG_7214
Stephen Tassinaro
Aug 19, 2025 9:24 AM

#285 [UNIT 513] [EXIST] Equipment is damaged. RTU-2 Prodigy Board

Status

Open

Start Date

Aug 18, 2025

Type

Planned Work

Created

Aug 19, 2025 9:10 AM
stephent@nationaltab.com

List

TAB Punch List

Last Updated

Oct 5, 2025 8:50 PM

Description

RTU-2 prodigy board is hanging loosely in the unit, only held in by its wiring harness.

Comments

Task closed

Stephen Tassinaro Sep 12, 2025

Re-opened task as the unit is now displaying an M2 communications error. Repair necessary to complete balance and maintain unit functions.

Stephen Tassinaro Oct 5, 2025

Photos



IMG_7185

Stephen Tassinaro

Aug 19, 2025 9:26 AM

#282 [UNIT 524] [EXIST] Equipment cabinets need cleaning. RTU-3

Status

Open

Start Date

Aug 18, 2025

Type

Planned Work

Created

Aug 19, 2025 9:10 AM
stephent@nationaltab.com

List

TAB Punch List

Last Updated

Oct 5, 2025 8:51 PM

Description

Equipment cabinets are dirty and needs to be cleaned.

Comments

Unresolved

Stephen Tassinaro Sep 12, 2025

Unresolved. Particularly RTU-3.

Stephen Tassinaro Oct 5, 2025

Photos



IMG_7193
Stephen Tassinaro
Aug 19, 2025 9:27 AM



IMG_7191
Stephen Tassinaro
Aug 19, 2025 9:27 AM

#275 [EXHA 122] Exhaust fan fire caulking

Status

Open

Start Date

Jul 24, 2025

Type

Planned Work

Created

Aug 1, 2025 9:48 AM
markj@nationaltab.com

List

TAB Punch List

Last Updated

Sep 12, 2025 1:37 AM

Description

All hood exhaust fans are missing fire caulking.

Comments

Installed caulking is not the typical red coloration of fire caulking. Requesting verification this is a high temp fire caulk That will not break down from heat and grease.

Stephen Tassinaro Sep 12, 2025

Photos



275

Riley Peterson

Aug 26, 2025 8:46 AM



IMG_4412

Mark Johnson

Aug 1, 2025 9:56 AM



IMG_4413

Mark Johnson

Aug 1, 2025 9:56 AM