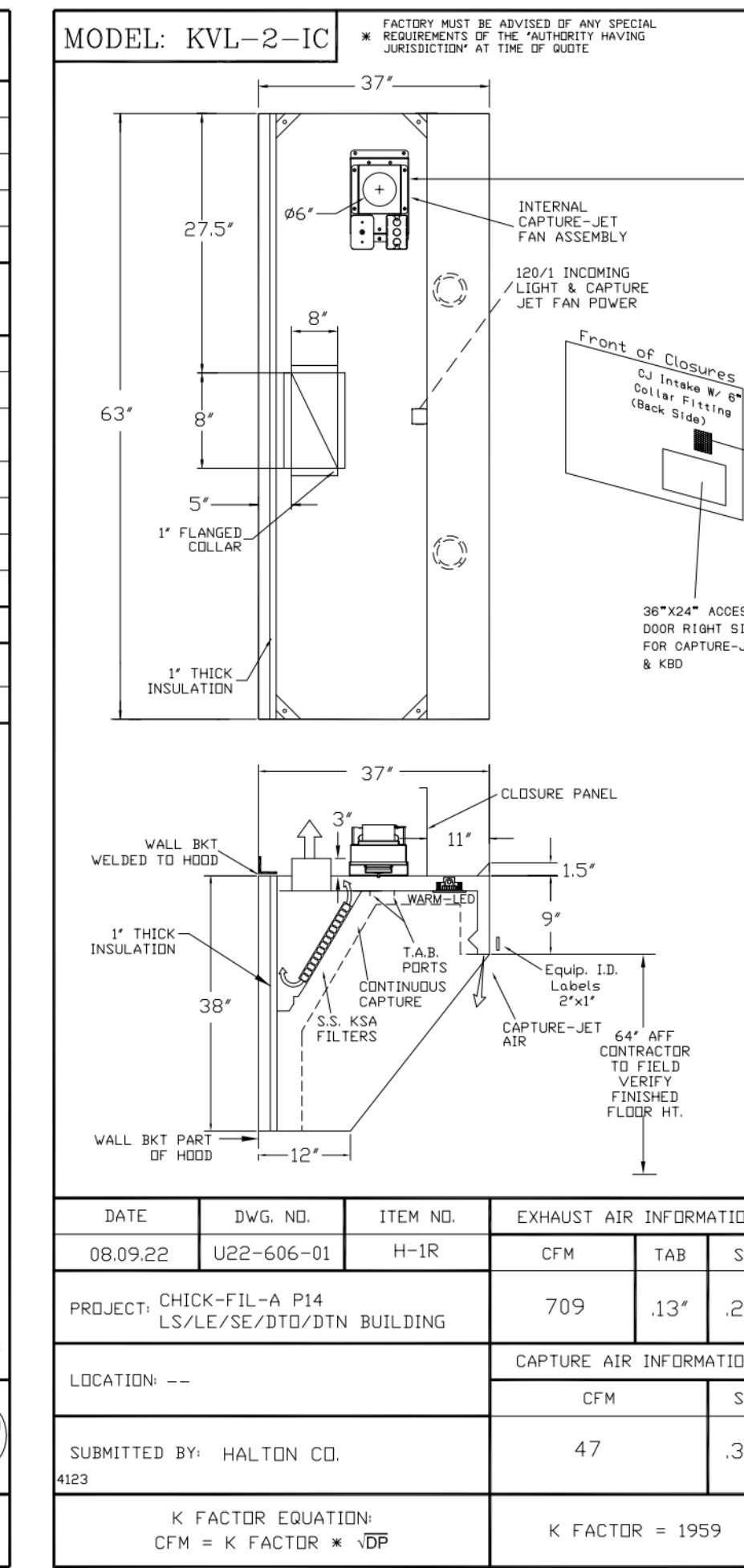


| STANDARD FEATURES | |
|------------------------|---|
| S.S. FILTERS (KSA) | 5 |
| 1/2 S.S. FILTERS (KSA) | — |
| CAPTURE-JET | * |
| STAND-OFF | * |
| L.E.D. LIGHTS | 3 |

| OPTIONS | |
|-------------------------------|---|
| REMOTE SWITCH PANEL | * |
| FIRE PROTECTION | * |
| ETL LISTED W/D EXHAUST DAMPER | * |
| CEILING CLOSURE | 2 |
| STD. BACKSPASH | 2 |
| INSULATED BACKSPASH | * |
| KBD DAMPER | * |

| MATERIAL | |
|------------------|-------------|
| EXPOSED SURFACES | 18 GA. S.S. |
| ALL 18 GA. S.S. | * |

| EQUIPMENT COVERED (2) FRYERS | | | |
|--|------------|----------|-------------------------|
| DATE | DWG. NO. | ITEM NO. | EXHAUST AIR INFORMATION |
| 08.09.22 | U22-606-01 | H-1L | CFM TAB SP |
| PROJECT: CHICK-FIL-A P14 LS/LE/SE/DTN BUILDING | | | |
| LOCATION: --- | | | |
| SUBMITTED BY: HALTON CO. | | | |

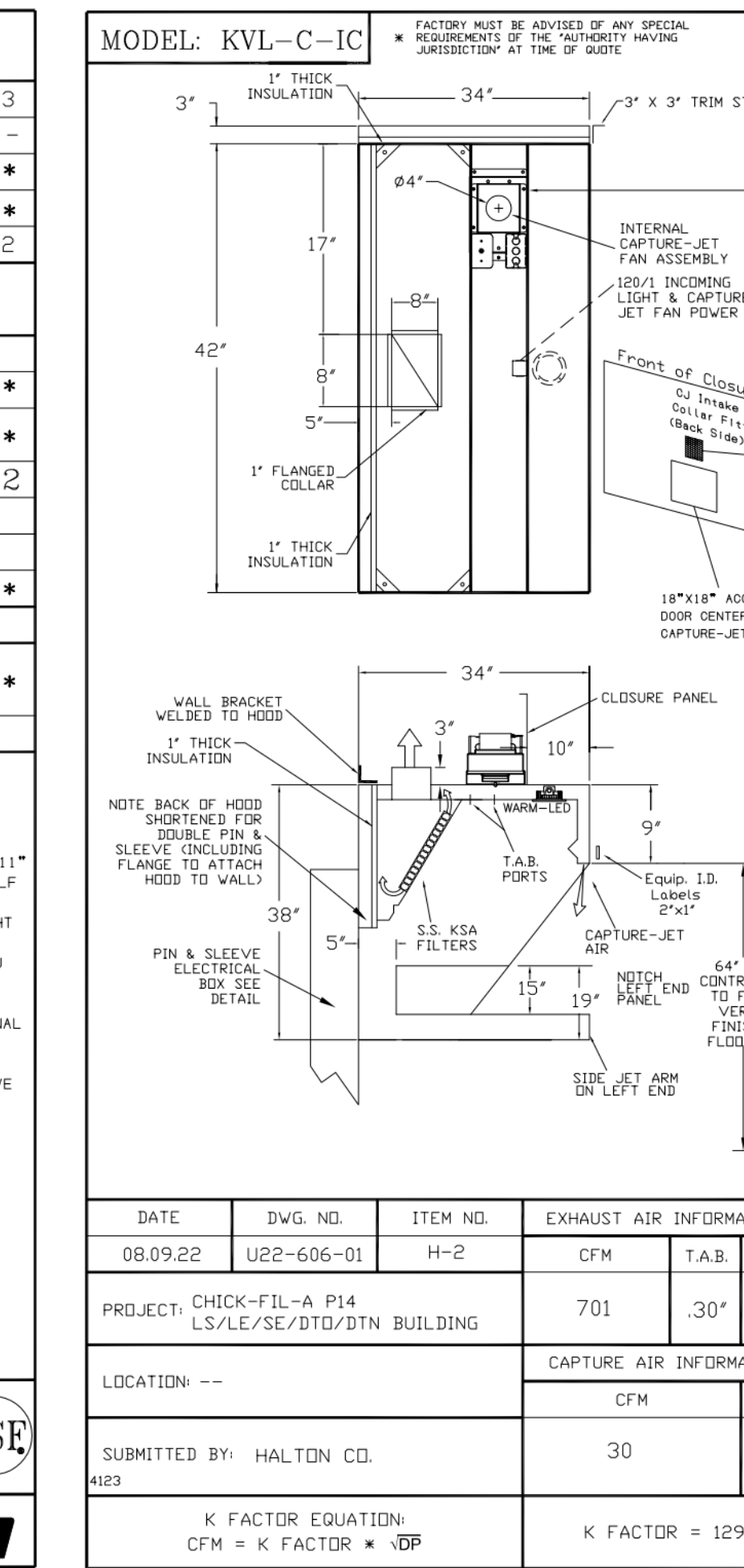


| STANDARD FEATURES | |
|------------------------|---|
| S.S. FILTERS (KSA) | 3 |
| 1/2 S.S. FILTERS (KSA) | — |
| CAPTURE-JET | * |
| STAND-OFF | * |
| L.E.D. LIGHTS | 2 |

| OPTIONS | |
|-------------------------------|---|
| REMOTE SWITCH PANEL | * |
| FIRE PROTECTION | * |
| ETL LISTED W/D EXHAUST DAMPER | * |
| CEILING CLOSURE | 2 |
| STD. BACKSPASH | 2 |
| INSULATED BACKSPASH | * |
| KBD DAMPER | * |

| MATERIAL | |
|------------------|-------------|
| EXPOSED SURFACES | 18 GA. S.S. |
| ALL 18 GA. S.S. | * |

| EQUIPMENT COVERED (2) FRYERS | | | |
|--|------------|----------|-------------------------|
| DATE | DWG. NO. | ITEM NO. | EXHAUST AIR INFORMATION |
| 08.09.22 | U22-606-01 | H-1R | CFM TAB SP |
| PROJECT: CHICK-FIL-A P14 LS/LE/SE/DTN BUILDING | | | |
| LOCATION: --- | | | |
| SUBMITTED BY: HALTON CO. | | | |

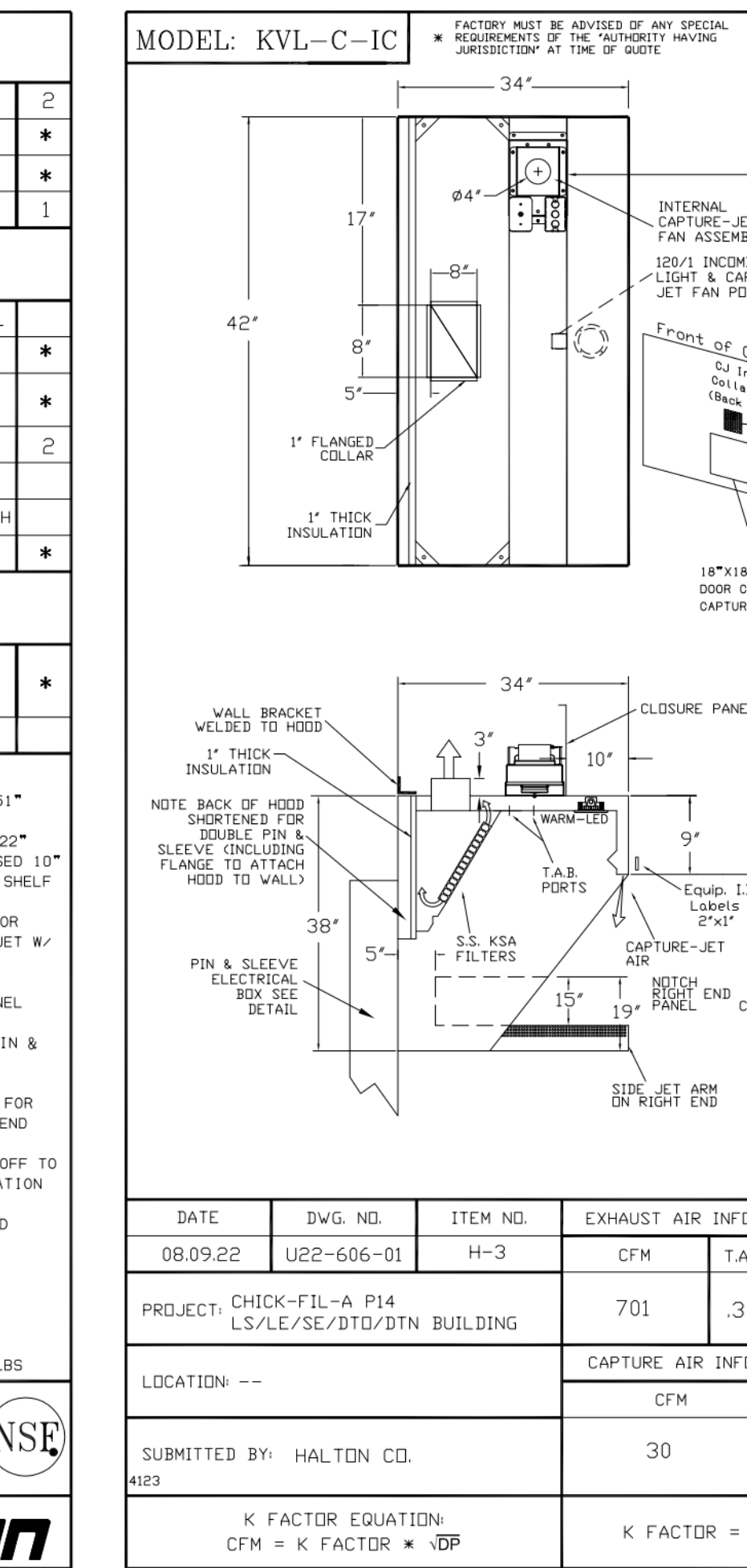


| STANDARD FEATURES | |
|--------------------|---|
| S.S. FILTERS (KSA) | 2 |
| CAPTURE-JET | * |
| STAND-OFF | * |
| L.E.D. LIGHTS | 1 |

| OPTIONS | |
|-------------------------------|---|
| REMOTE SWITCH PANEL | * |
| FIRE PROTECTION | * |
| ETL LISTED W/D EXHAUST DAMPER | * |
| CEILING CLOSURE | 2 |
| STD. BACKSPASH | 2 |
| INSULATED BACKSPASH | * |
| KBD DAMPER | * |

| MATERIAL | |
|------------------|-------------|
| EXPOSED SURFACES | 18 GA. S.S. |
| ALL 18 GA. S.S. | * |

| EQUIPMENT COVERED (2) FRYERS | | | |
|--|------------|----------|-------------------------|
| DATE | DWG. NO. | ITEM NO. | EXHAUST AIR INFORMATION |
| 08.09.22 | U22-606-01 | H-2 | CFM TAB SP |
| PROJECT: CHICK-FIL-A P14 LS/LE/SE/DTN BUILDING | | | |
| LOCATION: --- | | | |
| SUBMITTED BY: HALTON CO. | | | |

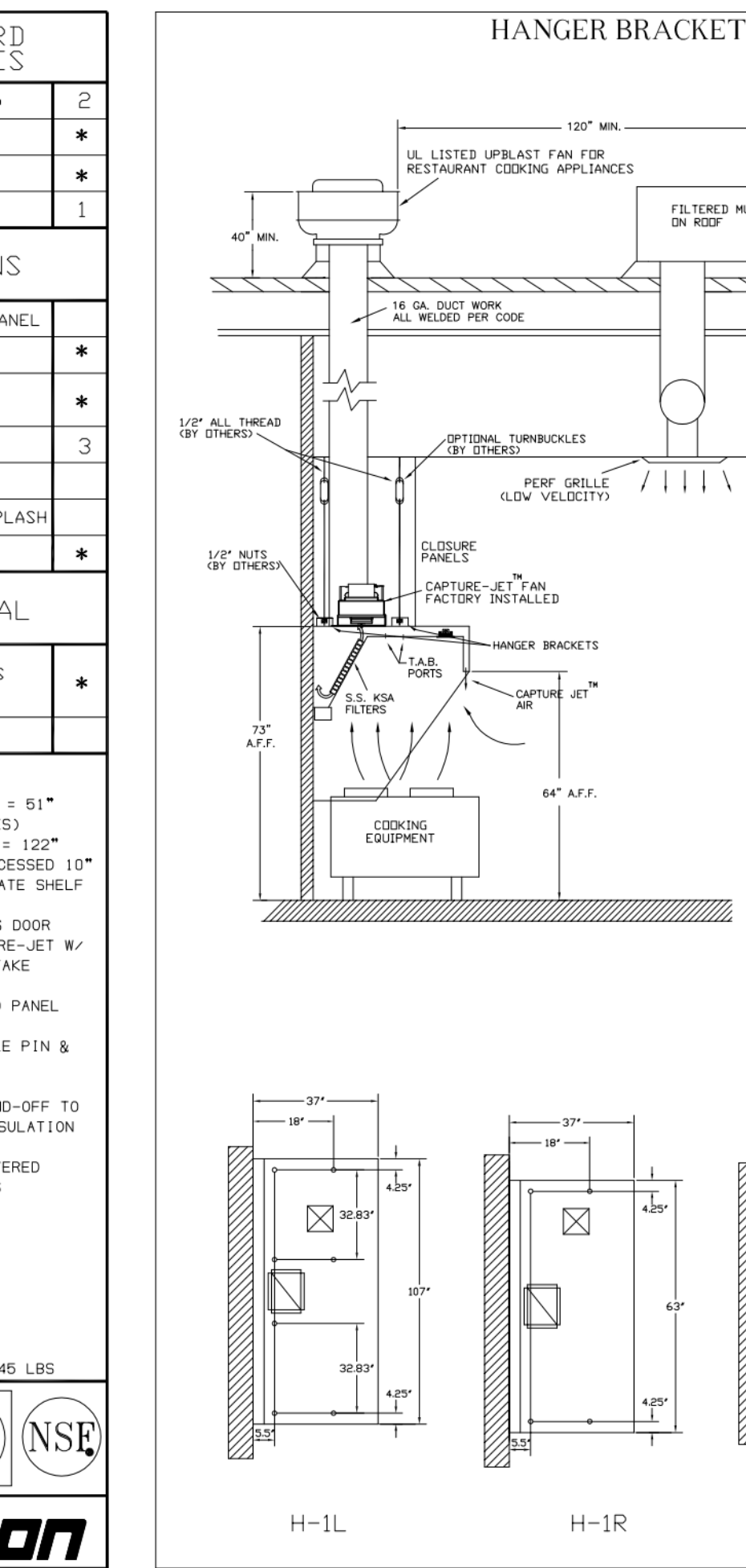


| STANDARD FEATURES | |
|--------------------|---|
| S.S. FILTERS (KSA) | 2 |
| CAPTURE-JET | * |
| STAND-OFF | * |
| L.E.D. LIGHTS | 1 |

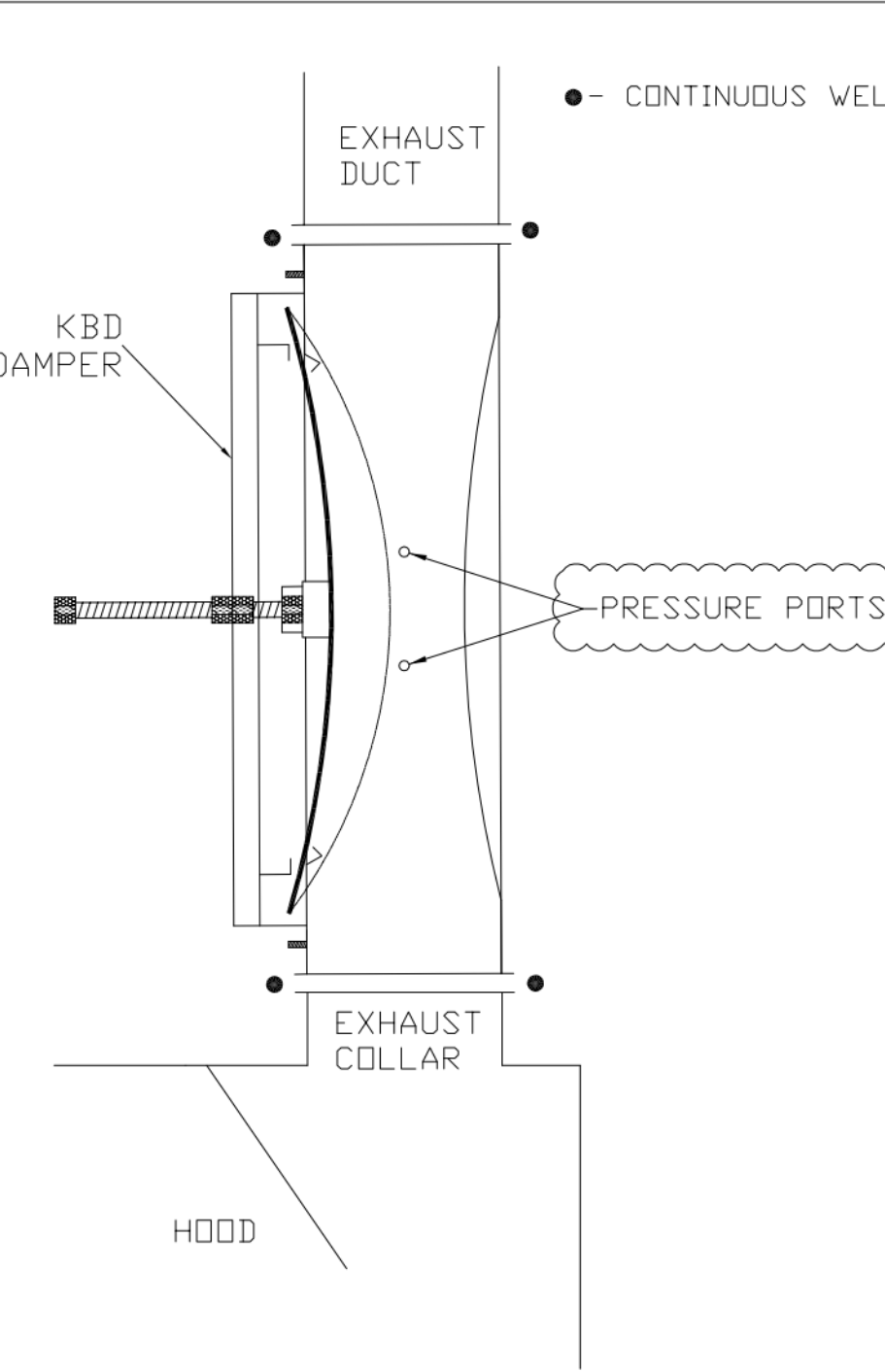
| OPTIONS | |
|-------------------------------|---|
| REMOTE SWITCH PANEL | * |
| FIRE PROTECTION | * |
| ETL LISTED W/D EXHAUST DAMPER | * |
| CEILING CLOSURE | 3 |
| STD. BACKSPASH | 3 |
| INSULATED BACKSPASH | * |
| KBD DAMPER | * |

| MATERIAL | |
|------------------|-------------|
| EXPOSED SURFACES | 18 GA. S.S. |
| ALL 18 GA. S.S. | * |

| EQUIPMENT COVERED (2) FRYERS | | | |
|--|------------|----------|-------------------------|
| DATE | DWG. NO. | ITEM NO. | EXHAUST AIR INFORMATION |
| 08.09.22 | U22-606-01 | H-3 | CFM TAB SP |
| PROJECT: CHICK-FIL-A P14 LS/LE/SE/DTN BUILDING | | | |
| LOCATION: --- | | | |
| SUBMITTED BY: HALTON CO. | | | |

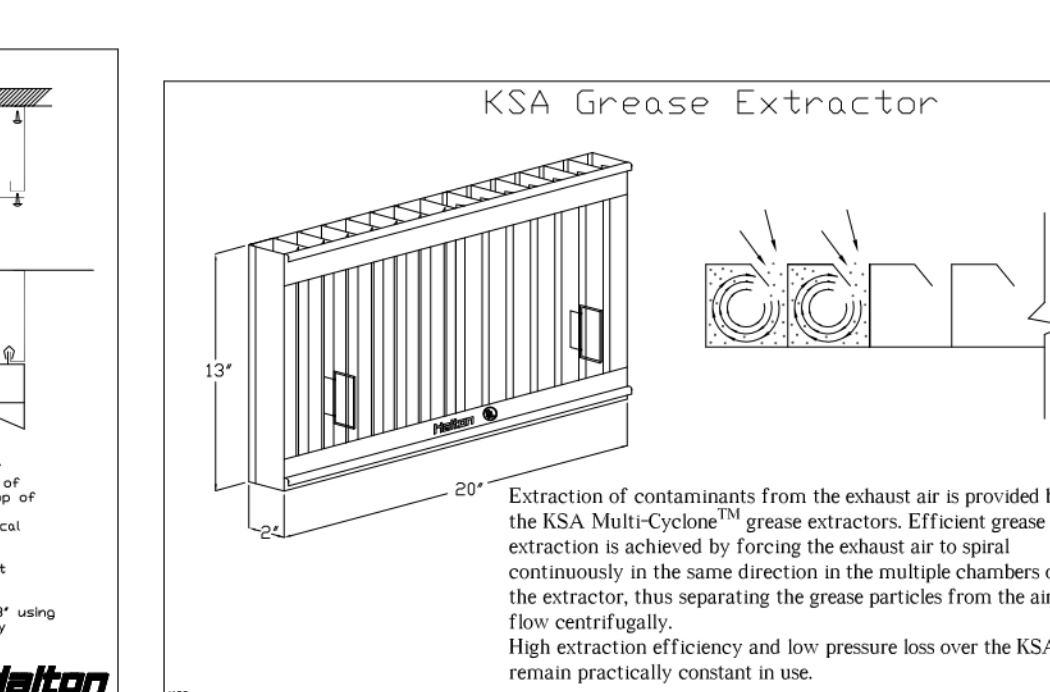
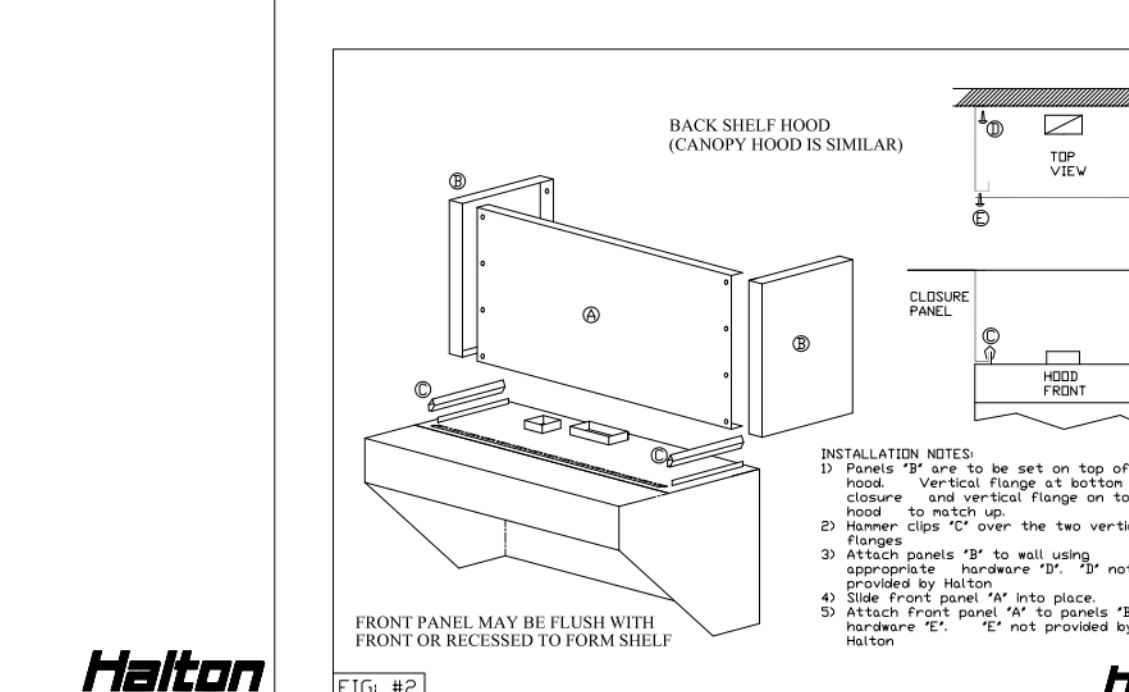
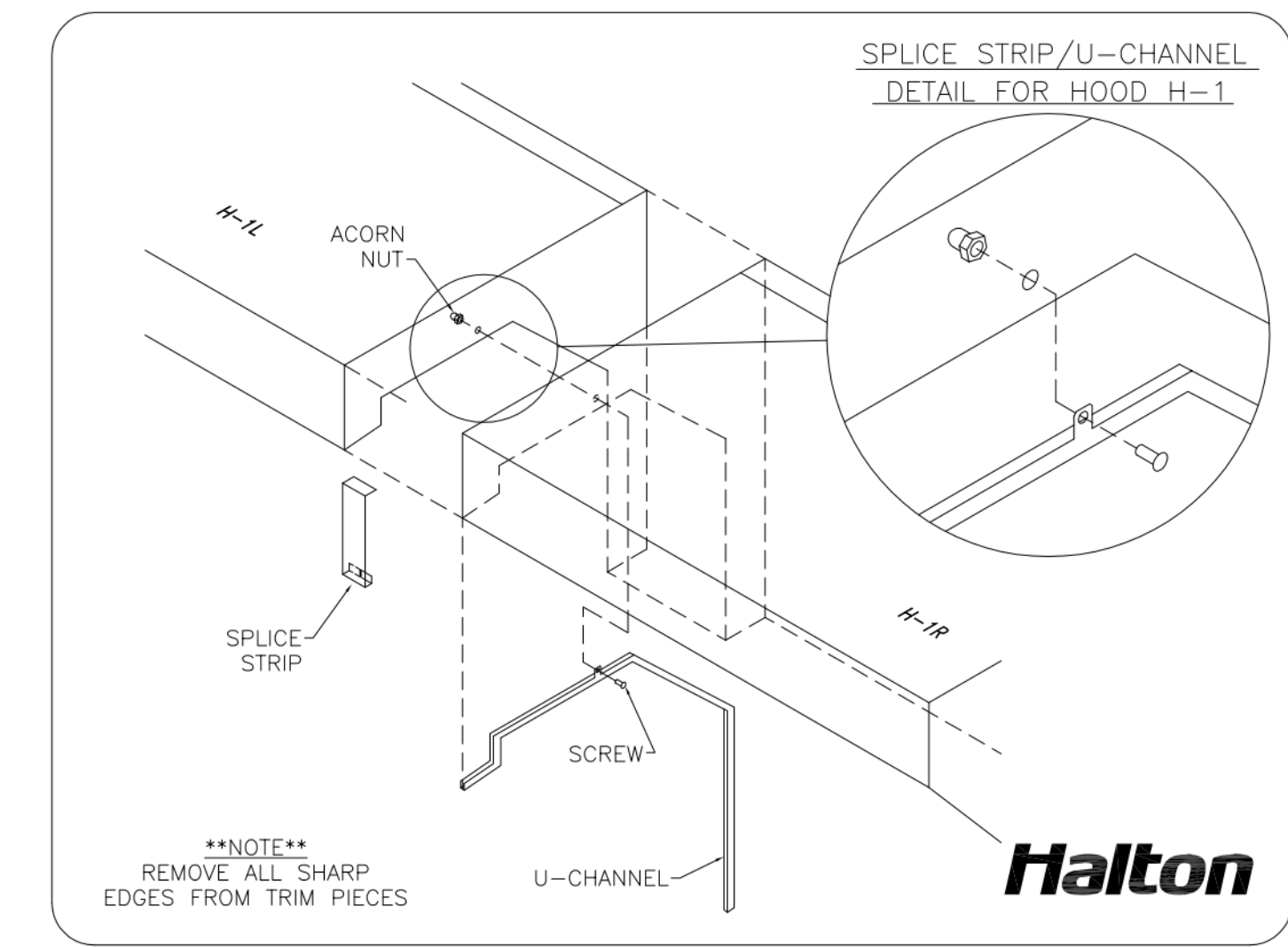
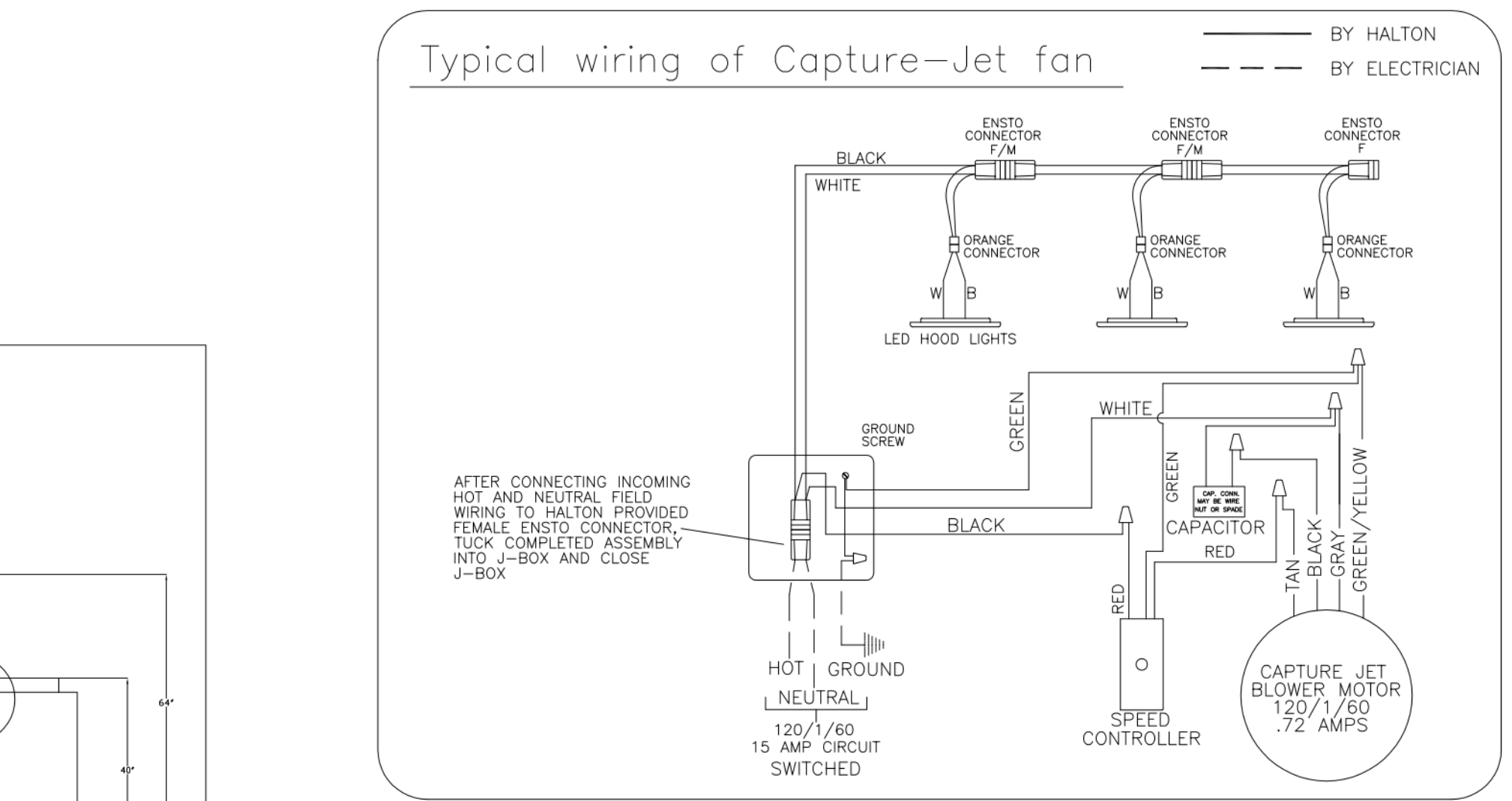
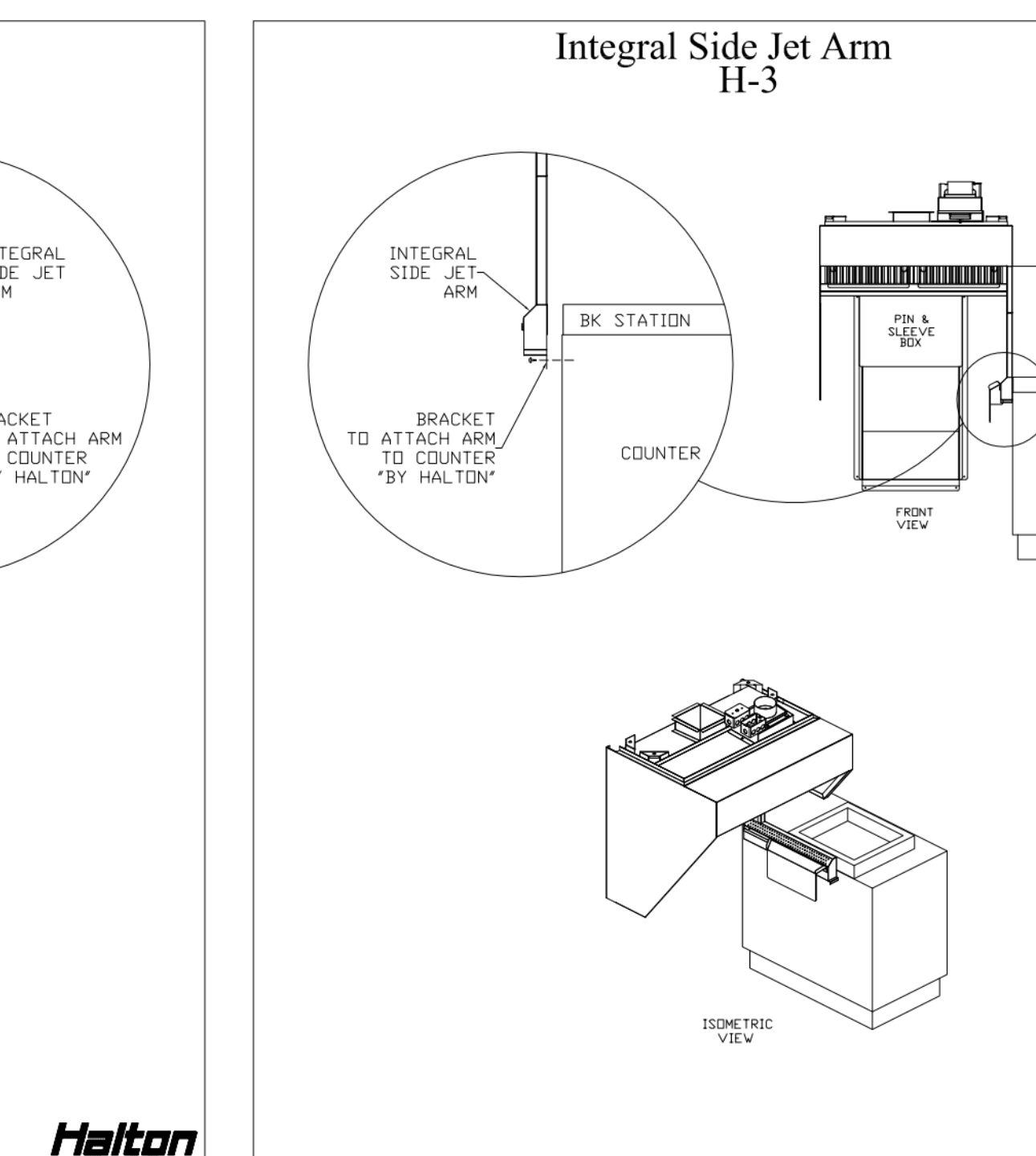
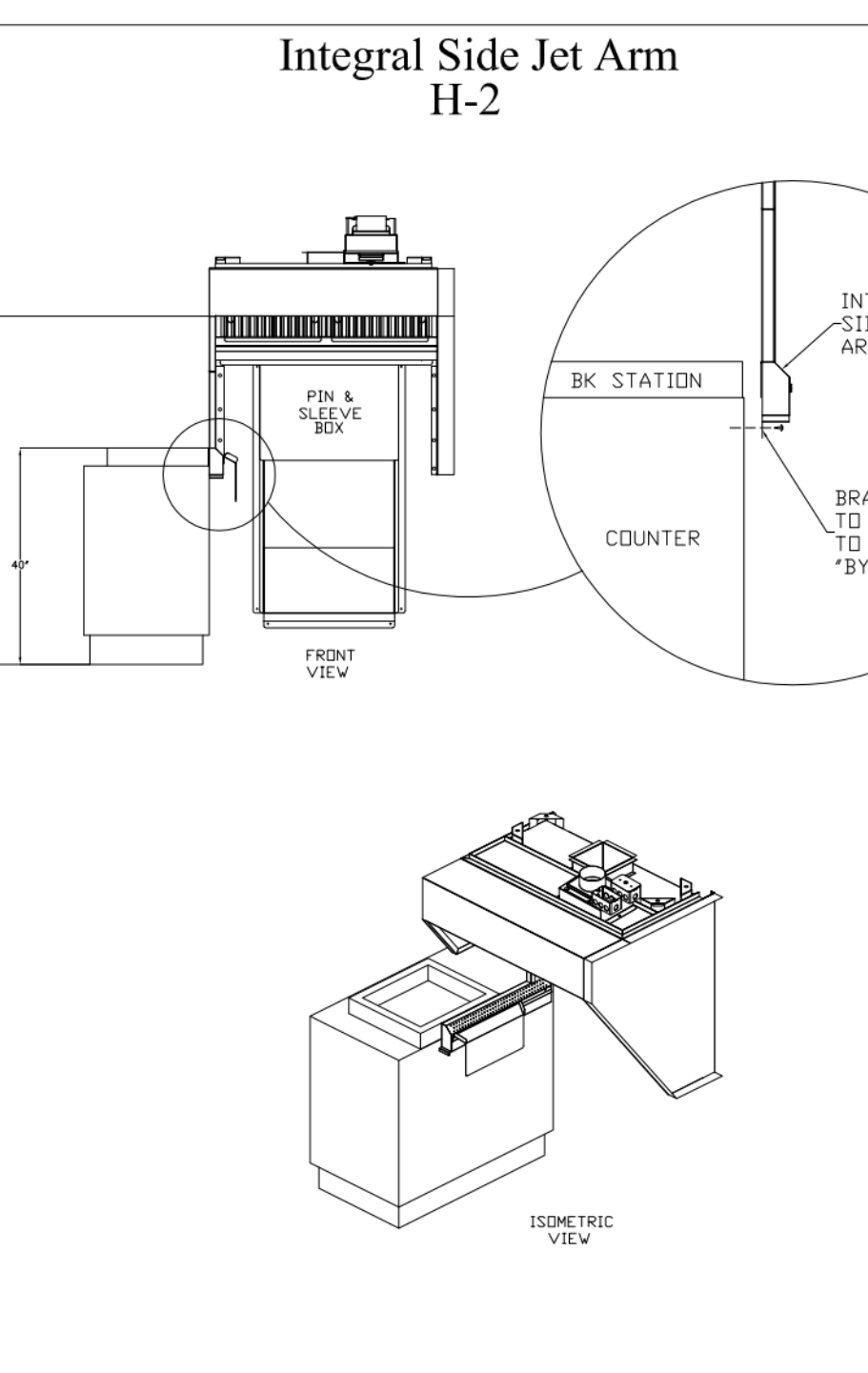
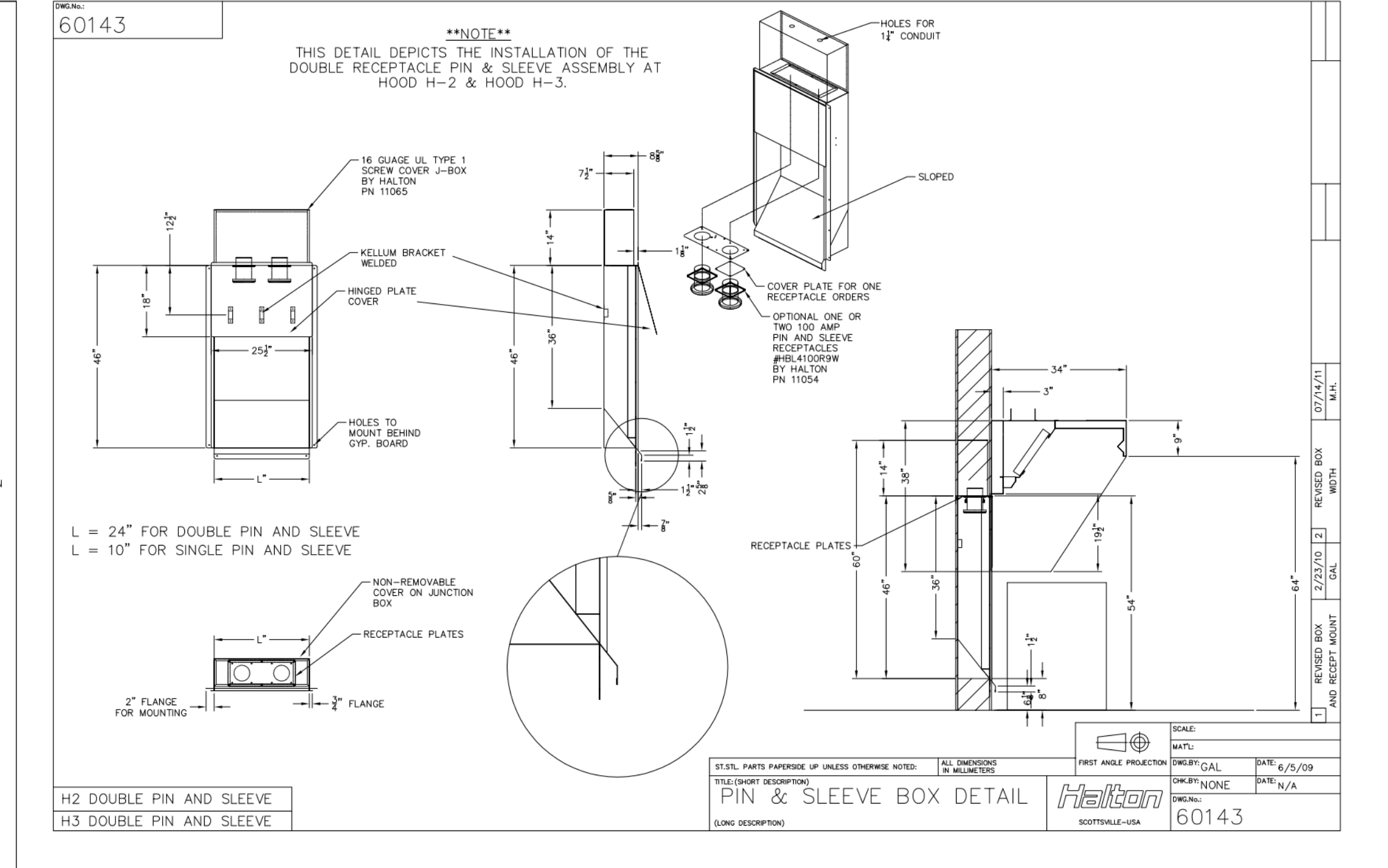
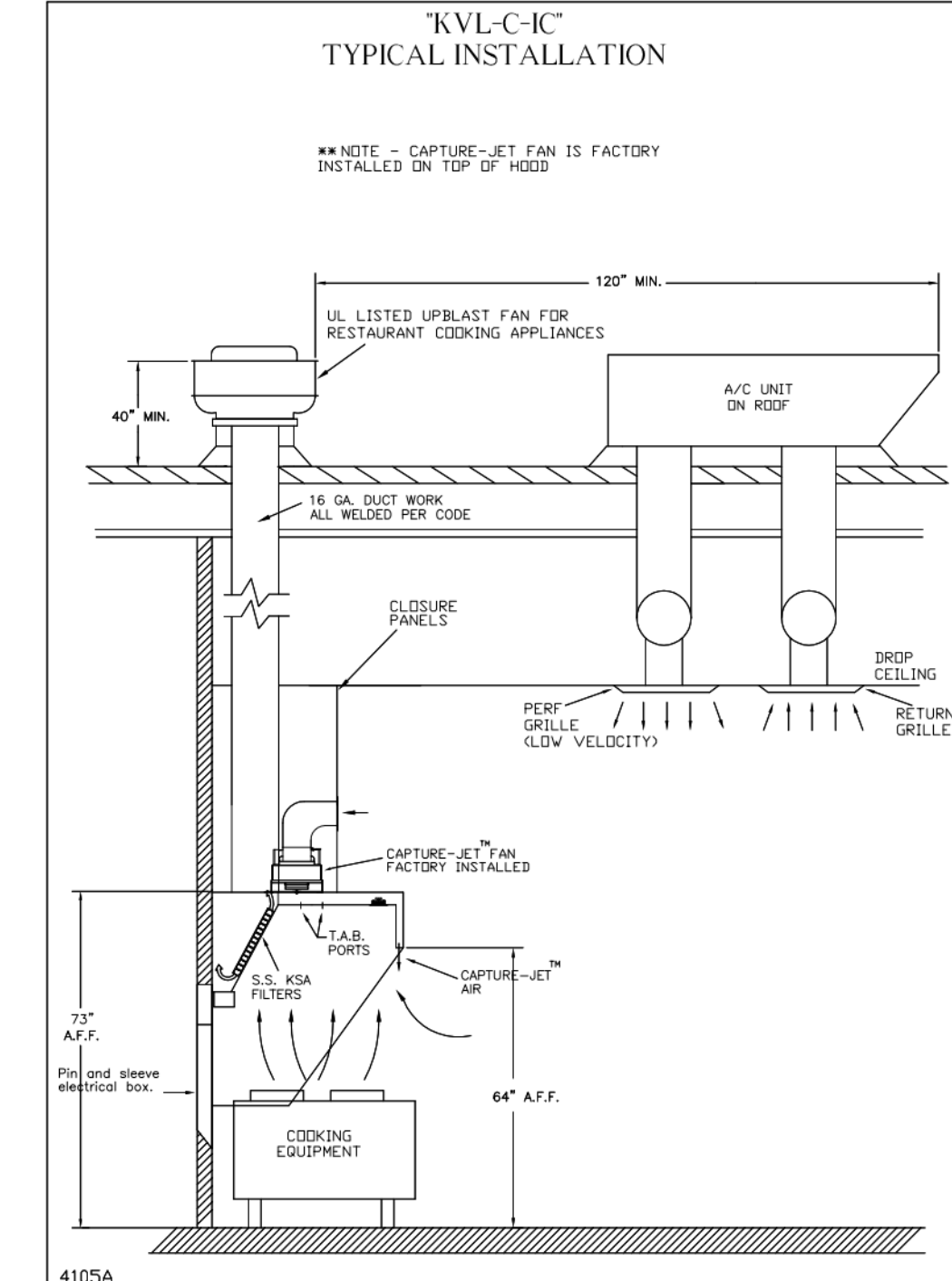
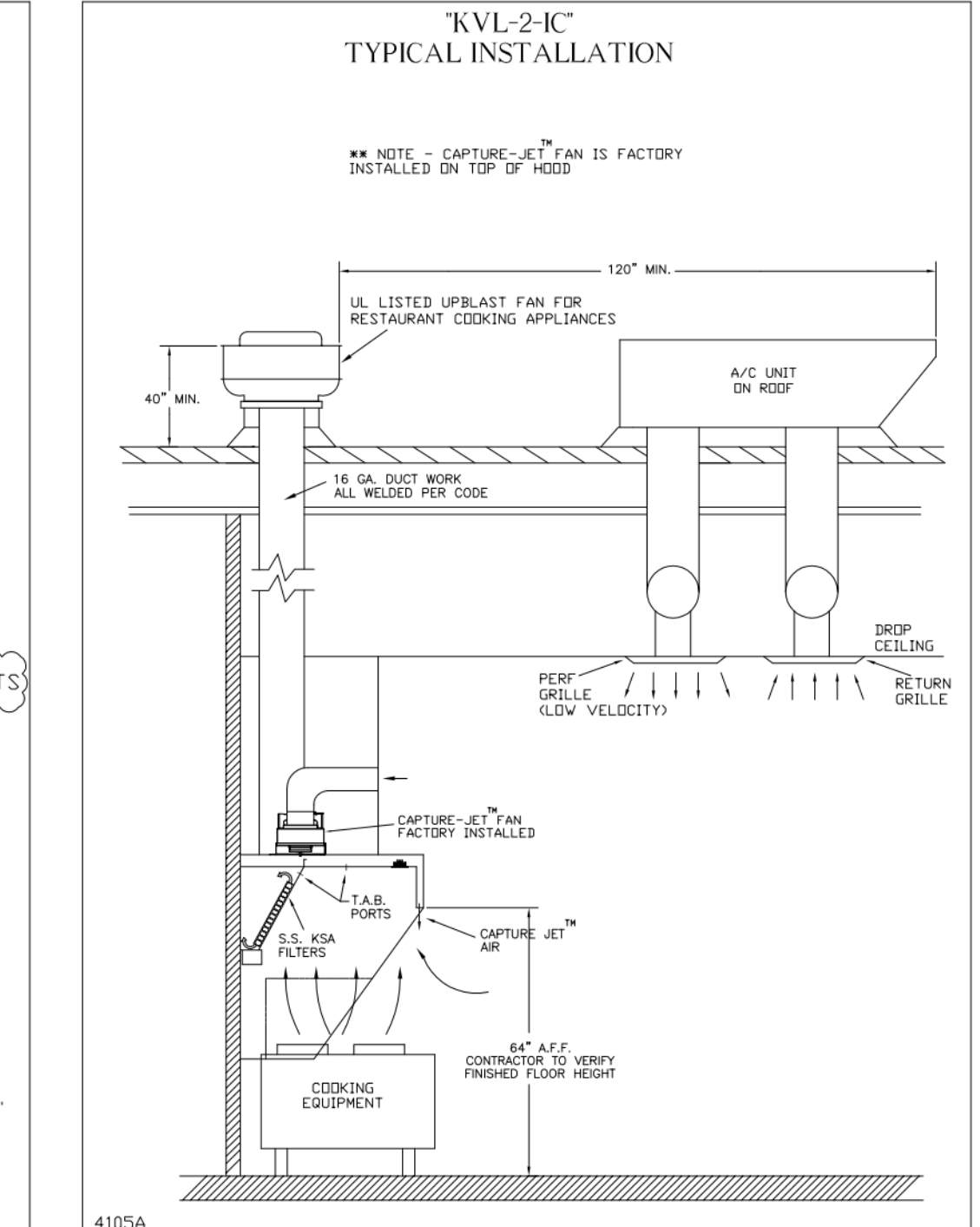


| HANGER BRACKET DETAIL | | | |
|--|------------|----------|-------------------------|
| DATE | DWG. NO. | ITEM NO. | EXHAUST AIR INFORMATION |
| 08.09.22 | U22-606-01 | H-1L | CFM TAB SP |
| PROJECT: CHICK-FIL-A P14 LS/LE/SE/DTN BUILDING | | | |
| LOCATION: --- | | | |
| SUBMITTED BY: HALTON CO. | | | |



| TAG | "L" | "W" | QUANTITY |
|------|-----|-----|----------|
| H-1L | 14" | 8" | 1 |
| H-1R | 8" | 8" | 1 |
| H-2 | 8" | 8" | 1 |
| H-3 | 8" | 8" | 1 |

MATERIAL: FRAME - 16GA CONT. WELDED GALV. ADJUSTABLE PANEL 18 GA S.S.



| HALTON HOODS | |
|--------------------------------------|--|
| — ETL LISTED PER LATEST 710 STANDARD | |
| — BUILT PER NFPA 96 | |
| — NSF LISTED | |

| NSE Halton | |
|------------|----------|
| MODEL NO. | KVL-2-1C |
| SERIAL NO. | |
| ITEM NO. | |

THIS DRAWING MUST BE CHECKED, SIGNED AND RETURNED TO THE APPROPRIATE FACTORY. PLEASE VERIFYING THE FOLLOWING:

- ALL DIMENSIONAL INFORMATION, MOUNTING POSITIONS
- THE LOCATION AND TYPE OF COOKING EQUIPMENT
- NOTE TO APPROVER: ANY CHANGES IN COOKING EQUIPMENT SUCH AS INCREASED ENERGY INPUTS OR EQUIPMENT POSITION MAY AFFECT EXHAUST AIRFLOW. HALTON MUST BE NOTIFIED IF ANY OF THESE CHANGES OCCUR. A RECALCULATION EXHAUST AIRFLOW MAY BE REQUIRED.

APPROVED FOR FABRICATION: WITH NO CHANGES WITH CHANGES AS NOTED

DATE: _____

WEBSITE: WWW.HALTON.COM

HALTON CO. (USA)
101 INDUSTRIAL DRIVE
SCOTTSDALE, KY 42164
1-270-237-9600

MAIL APPROVED DRAWINGS TO APPROPRIATE FACTORY BELOW:

HALTON CO. (CANADA)
1021 BREVKV PLACE 3R7
MISSISSAUGA, ON L4W 1A9
1-905-624-0301

PROJECT: CHICK-FIL-A P14 LS/LE/SE/DTN BUILDING

LOCATION: ---

DATE: 08.09.22

SCALE: NTS

Halton Dwg: U22-606-01

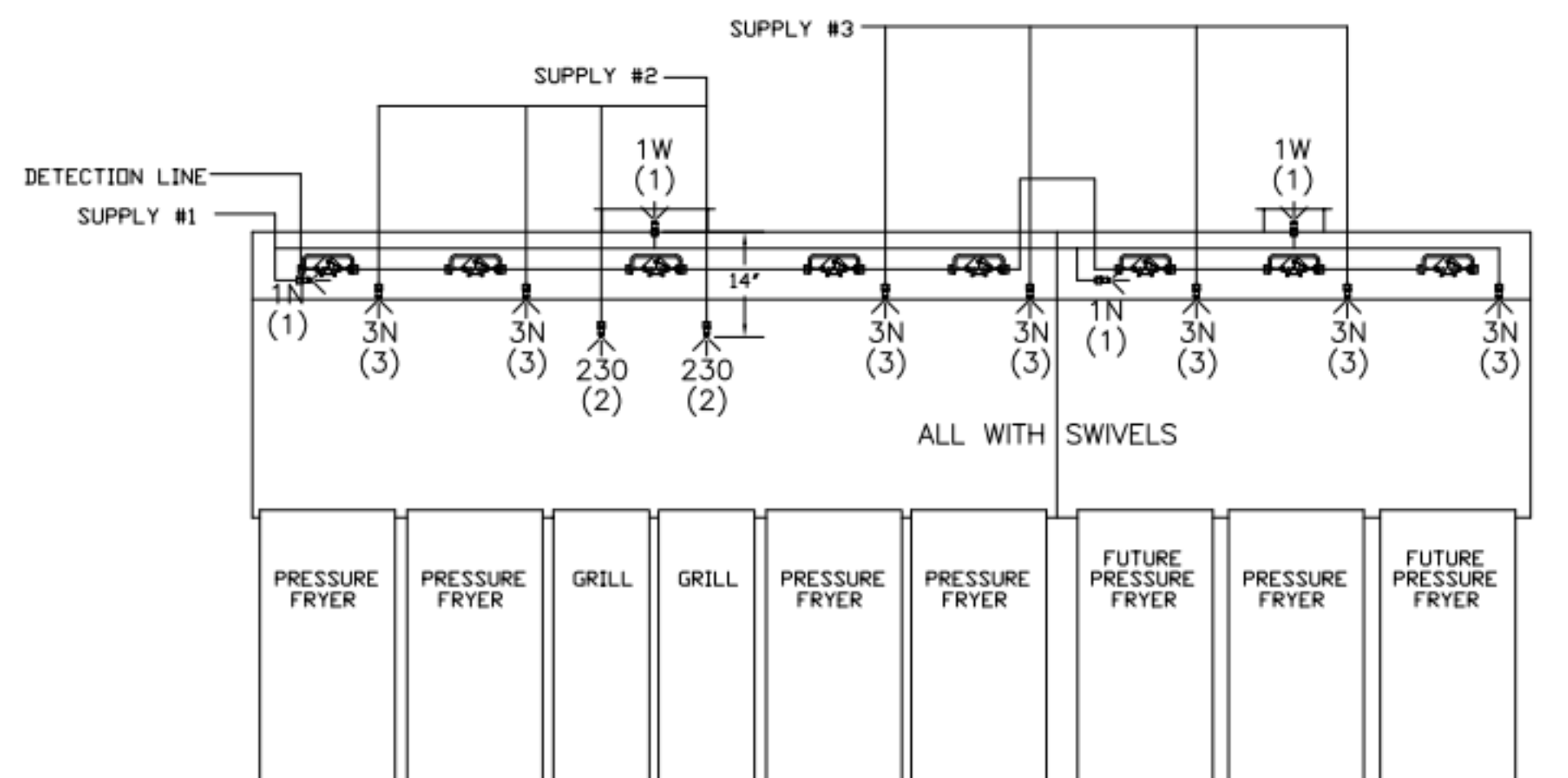
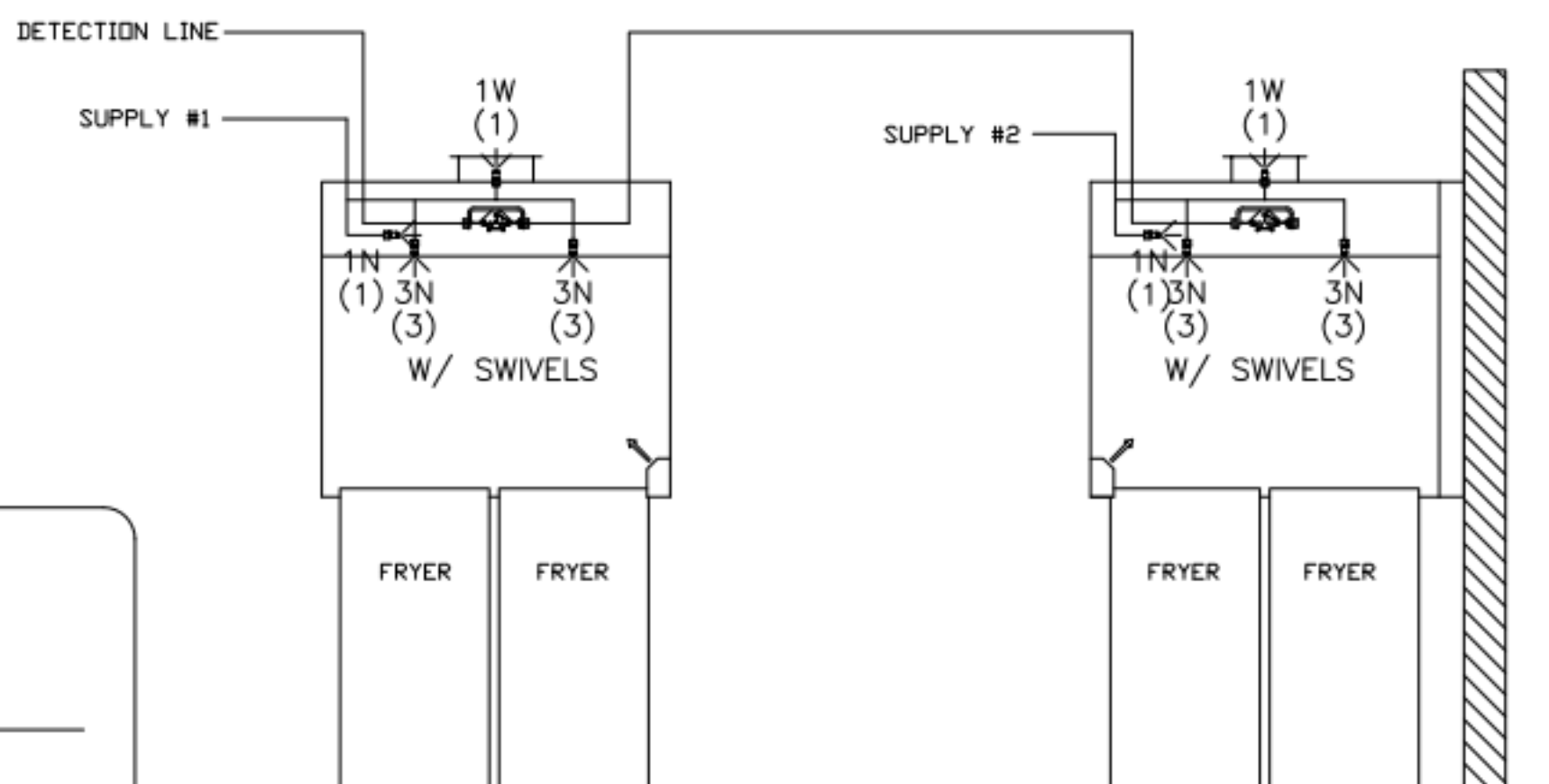
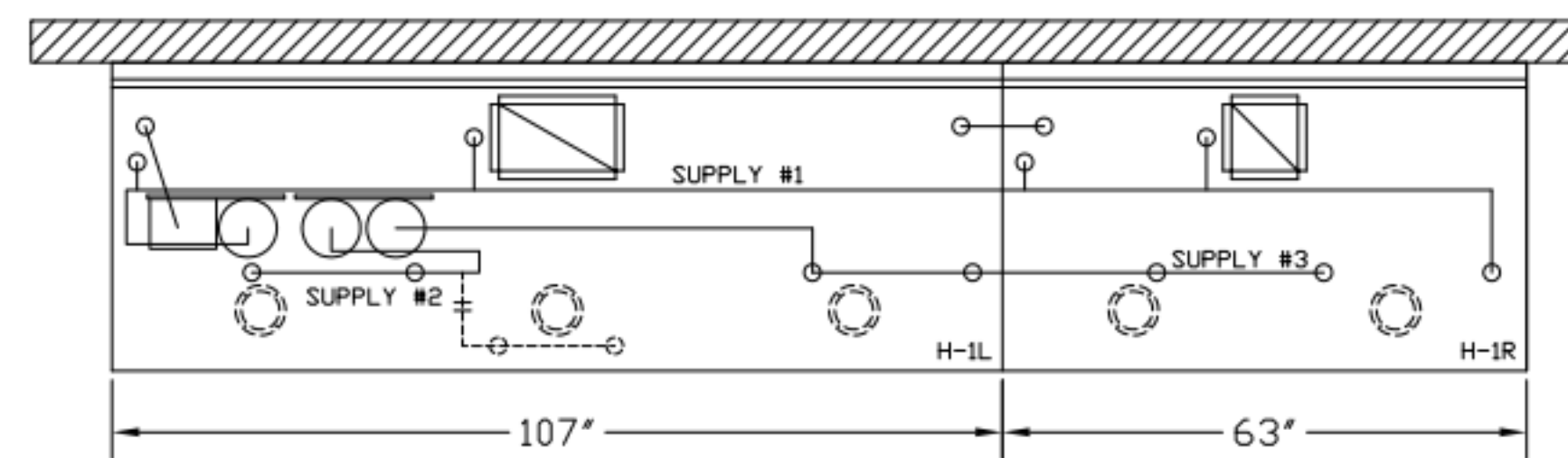
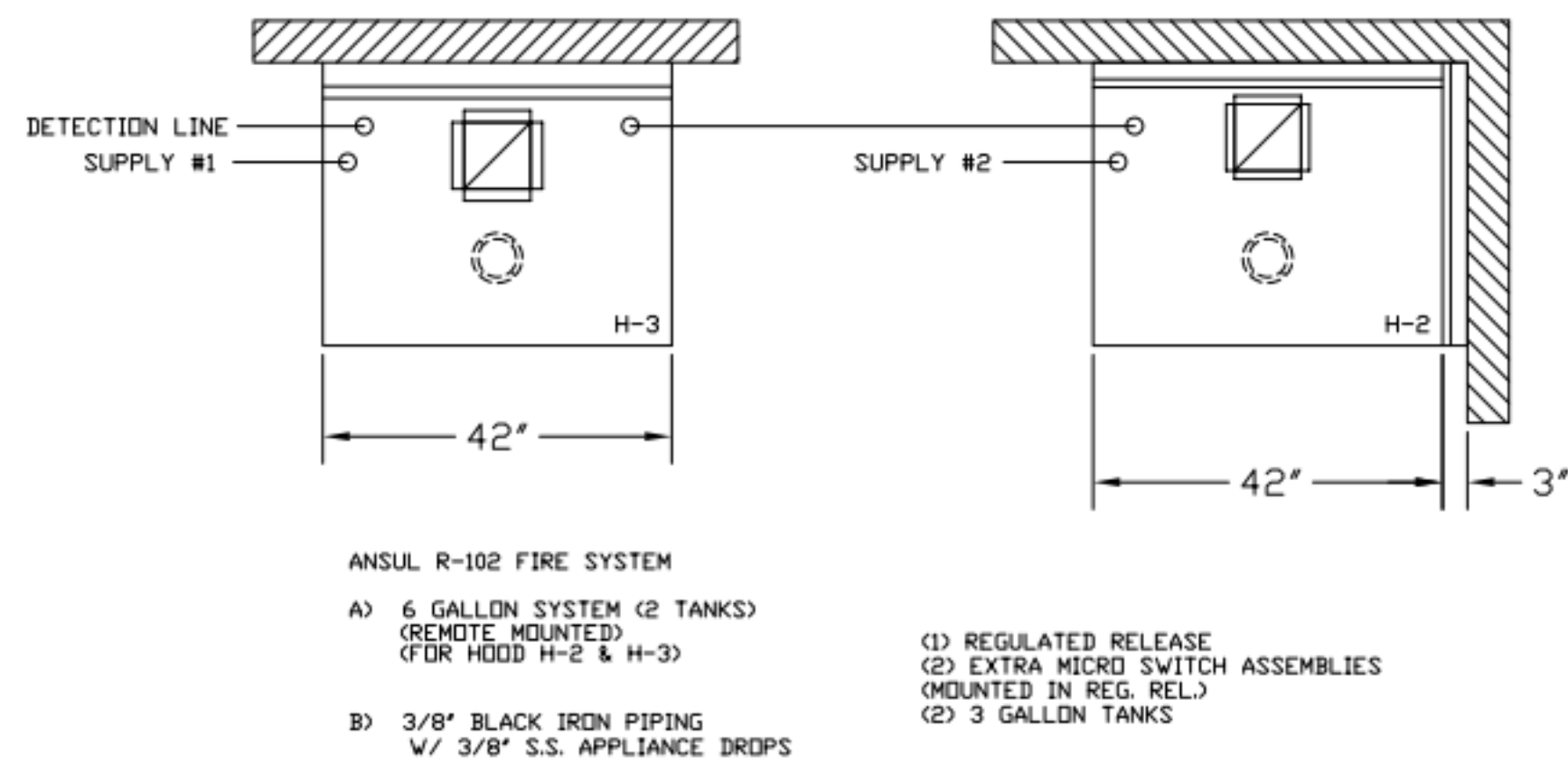
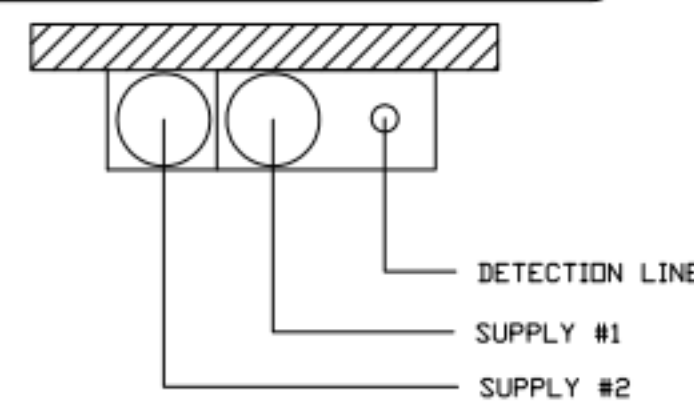
Halton
CARE FOR INDOOR AIR

Sheet MH-1.1

NOTE:

FIRE SYSTEM TYPE TO BE DETERMINED AT TIME OF ORDER RELEASE.

****PROTECTS HOODS H-2 & H-3****
 REMOTE MOUNTED:
 (1) REGULATED RELEASE (WITH ONE TANK)
 (1) SINGLE TANK ENCLOSURE (WITH ONE TANK)



FUSIBLE LINK RATINGS

| ITEM | TEMP |
|---------------------|------|
| OPEN FRYERS | 450° |
| 2 BURNER / FLAT TOP | 450° |
| PRESSURE FRYERS | 450° |
| GRILL | 450° |
| EXHAUST COLLARS | 450° |

ANSUL R-102 FIRE SYSTEM NOTES
 THREE TANK SYSTEM MOUNTED ON TOP OF (H-1L)
 MAXIMUM FLOW POINTS = 33

ANSUL R-102 FIRE SYSTEM NOTES
 TWO TANK SYSTEM REMOTE MOUNTED
 MAXIMUM FLOW POINTS = 22

| ITEM # | QTY | DESCRIPTION | FLOW PTS (TOTAL) |
|--------|-----|-------------------|------------------|
| 1W | 4 | DUCT NOZZLES | 4 |
| 1N | 4 | PLENUM NOZZLES | 4 |
| 230 | 2 | APPLIANCE NOZZLES | 4 |
| 3N | 11 | APPLIANCE NOZZLES | 33 |

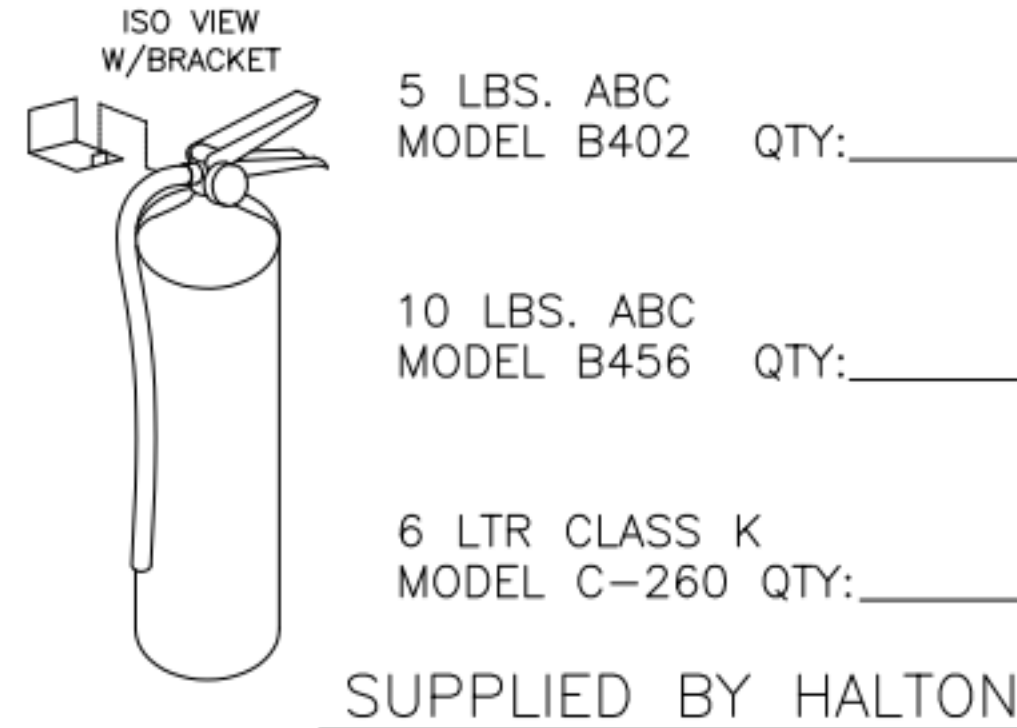
TOTAL FLOW POINTS - 45

| ITEM # | QTY | DESCRIPTION |
|--------|-----|---|
| #200 | 8 | SERIES DETECTORS W/ FUSIBLE LINKS |
| #201 | 2 | TERMINAL DETECTOR W/ FUSIBLE LINKS |
| #202 | 1 | DEM REGULATED RELEASE W/ DOUBLE POLE MICRO SWITCH |
| #202 | 1 | REGULATED RELEASE W/ DOUBLE POLE MICRO SWITCH |
| #203 | 5 | 3 GALLON TANKS |
| #204 | 1 | SINGLE TANK ENCLOSURE |
| #205 | 2 | REMOTE PULL STATION |

ANSUL R-102 FIRE SYSTEM
 UL LISTED PER STD LATEST STD 300

- FINAL INSTALLATION IS TO BE MADE IN ACCORDANCE WITH ALL APPLICABLE CODES
- ALL ELECTRICAL COMPONENTS FOR EQUIPMENT SHUT DOWN TO BE PROVIDED BY THE ELECTRICIAN. MICRO-SWITCH INSTALLED IN REGULATED RELEASE BY ANSUL INSTALLER
- REMOTE PULL STATION LOCATED PER MECHANICAL DRAWINGS

FIRE EXTINGUISHER

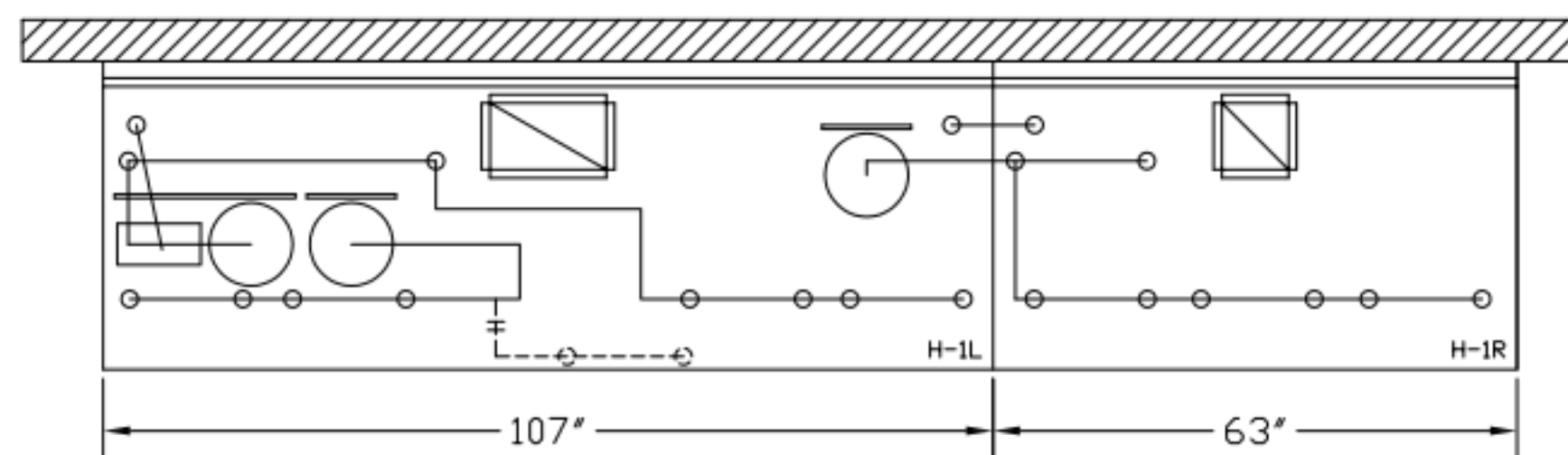
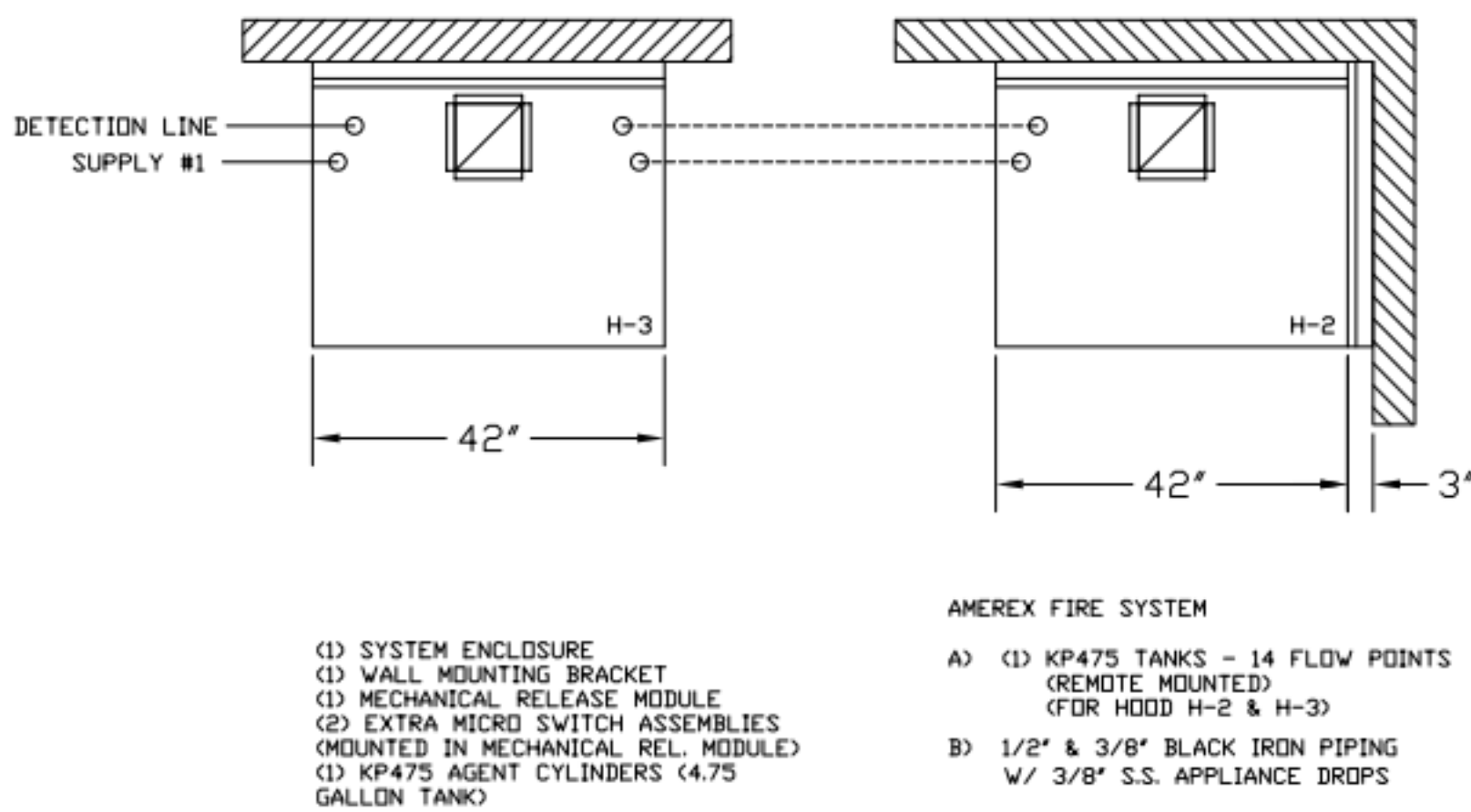
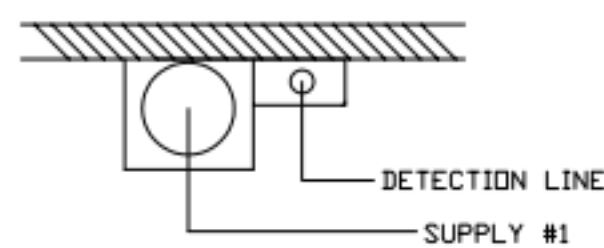


ANSUL R-102 FIRE SYSTEM LAYOUT

ANSUL R-102 FIRE SYSTEM LAYOUT

1/2" BLACK IRON SUPPLY LINE REQ'D FROM TANK TO FIRST BRANCH LINE FOR 475 TANKS ONLY!

****PROTECTS HOODS H-2 & H-3****
 REMOTE MOUNTED:
 (1) SYSTEM ENCLOSURE
 (1) WALL MOUNTING BRACKET
 (1) MECHANICAL RELEASE MODULE
 (1) KP475 AGENT CYLINDER (4.75 GALLON TANK)



FUSIBLE LINK RATINGS

| ITEM | TEMP |
|---------------------|------|
| OPEN FRYERS | 450° |
| 2 BURNER / FLAT TOP | 450° |
| PRESSURE FRYERS | 450° |
| GRILL | 450° |
| EXHAUST COLLARS | 450° |

AMEREX FIRE SYSTEM NOTES
 (1) KP375 & (2) KP475 TANK SYSTEM MOUNTED ON TOP OF (H-1L)
 MAXIMUM FLOW POINTS = 39

AMEREX FIRE SYSTEM NOTES
 KP475 TANK SYSTEM REMOTE MOUNTED
 (1) TANK
 MAXIMUM FLOW POINTS = 14

| ITEM # | QTY | DESCRIPTION | FLOW PTS (TOTAL) |
|--------|-----|-------------------|------------------|
| 16416 | 4 | DUCT NOZZLES | 4 |
| 11982 | 4 | PLENUM NOZZLES | 4 |
| 11982 | 8 | APPLIANCE NOZZLES | 8 |
| 14178 | 2 | APPLIANCE NOZZLES | 4 |
| 13729 | 14 | APPLIANCE NOZZLES | 28 |

TOTAL FLOW POINTS - 48

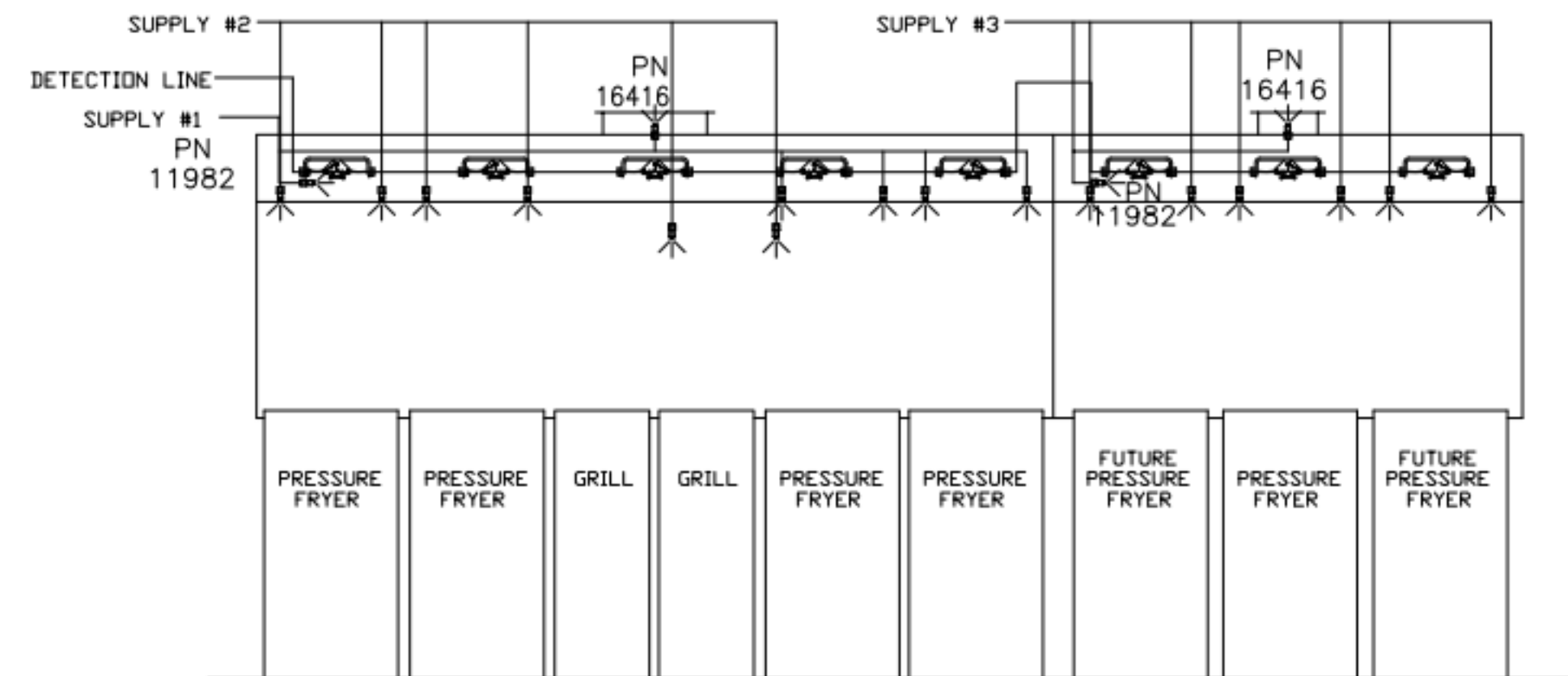
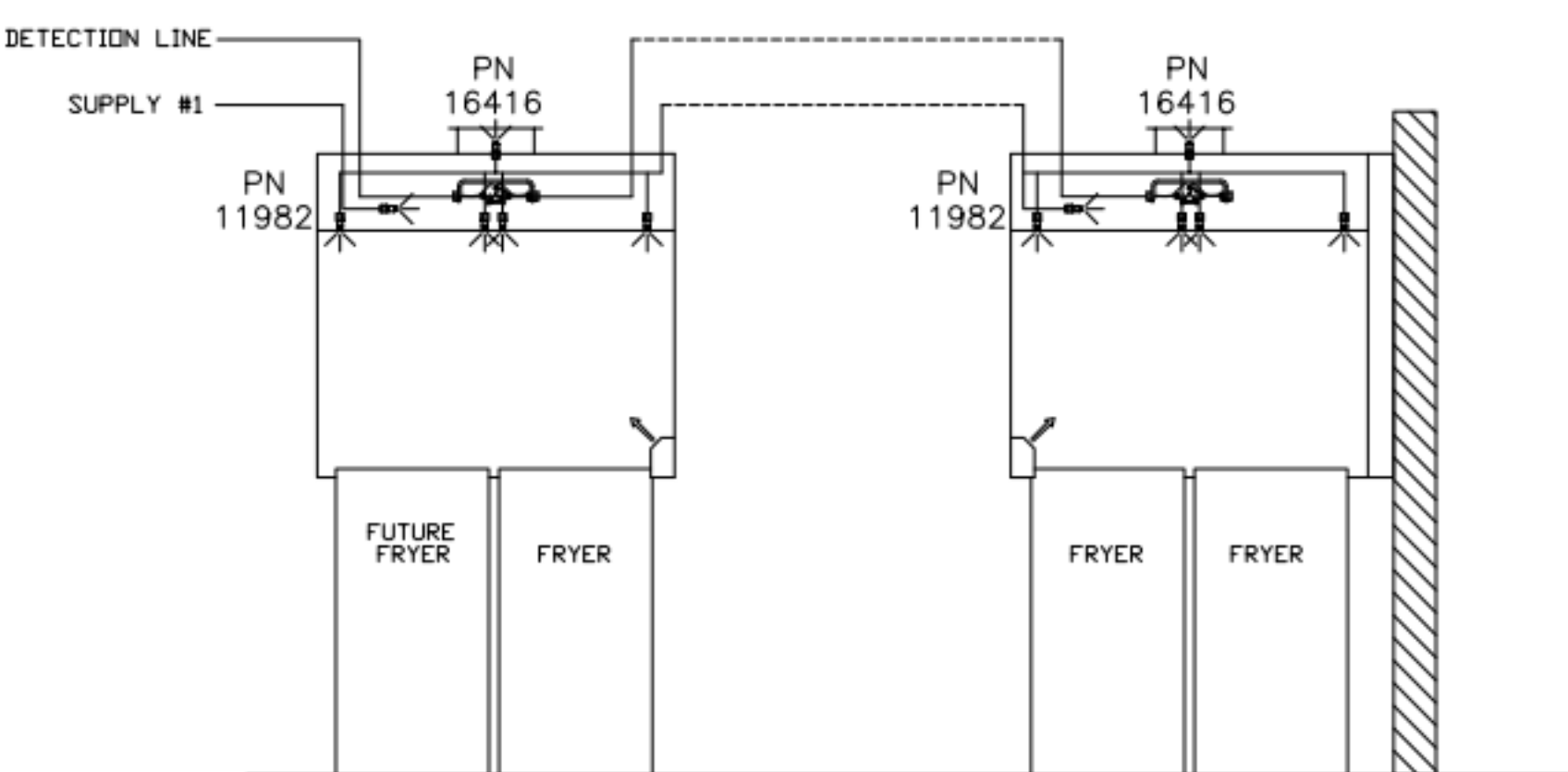
| ITEM # | QTY | DESCRIPTION |
|------------|-----|---|
| 12508-P001 | 10 | DETECTOR BRACKET ASSEMBLY |
| 13334 | 1 | KP375 AGENT CYLINDER |
| 17379 | 3 | KP475 AGENT CYLINDER |
| 18001 | 1 | MECHANICAL RELEASE MODULE W/ DOUBLE POLE MICRO SWITCH |
| 25851 | 1 | SYSTEM ENCLOSURE W/ DOUBLE POLE MICRO SWITCH |
| 16920 | 1 | WALL MOUNTING BRACKET |
| 21481 | 3 | REMOTE MANUAL PULL STATION |

AMEREX FIRE SYSTEM
 TESTED & LISTED BY UNDERWRITERS LABORATORIES, INC. TO UL STANDARD 300.

- FINAL INSTALLATION IS TO BE MADE IN ACCORDANCE WITH ALL APPLICABLE CODES
- ALL ELECTRICAL COMPONENTS FOR EQUIPMENT SHUT DOWN TO BE PROVIDED BY THE ELECTRICIAN. MICRO-SWITCH INSTALLED IN REGULATED RELEASE BY AMEREX INSTALLER
- REMOTE PULL STATION LOCATED PER MECHANICAL DRAWINGS

ALL APPLIANCE NOZZLES FOR H-2 & H-3 ARE PN 11982 NOZZLES W/ SWIVELS.

ALL APPLIANCE NOZZLES FOR PRESSURE FRYERS ARE PN 13729 NOZZLES W/ SWIVELS. ALL GRILL NOZZLES ARE 14178 NOZZLES W/ SWIVELS.



AMEREX

ANSUL

THIS DRAWING MUST BE CHECKED, SIGNED AND RETURNED TO THE APPROPRIATE FACTORY. PLEASE VERIFY THE FOLLOWING:

- ALL DIMENSIONAL INFORMATION, MOUNTING POSITIONS
- THE LOCATION AND TYPE OF COOKING EQUIPMENT.

NOTE TO APPROVER: ANY CHANGES IN COOKING EQUIPMENT SUCH AS INCREASED ENERGY INPUTS OR EQUIPMENT POSITION MAY AFFECT EXHAUST AIRFLOW. HALTON MUST BE NOTIFIED IF ANY OF THESE CHANGES OCCUR. A RECALCULATION EXHAUST AIRFLOW MAY BE REQUIRED.

APPROVED FOR FABRICATION: WITH NO CHANGES WITH CHANGES AS NOTED

DATE: _____

APPROVED BY: _____

WEBSITE: WWW.HALTON.COM

MAIL APPROVED DRAWINGS TO APPROPRIATE FACTORY BELOW:

| REV. | DATE | DESCRIPTION |
|------|------|-------------|
| 1 | | |
| 2 | | |
| 3 | | |
| 4 | | |
| 5 | | |
| 6 | | |
| 7 | | |

PROJECT: CHICK-FIL-A P14
 LS/LE/SE/DTO/DTN BUILDING

LOCATION: ---

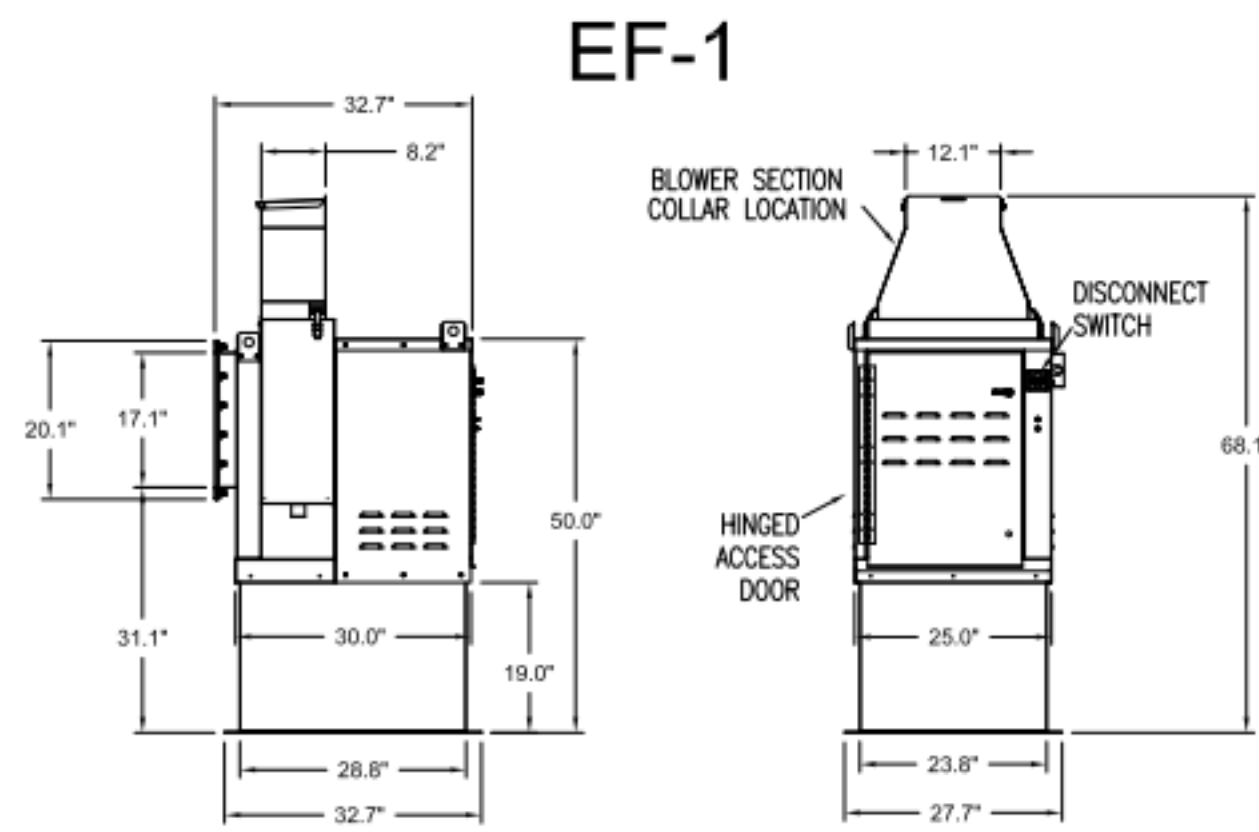
DRAWN BY: CG DATE: 08.09.22

SCALE: NTS

Halton Dwg: U:22-606-02FS

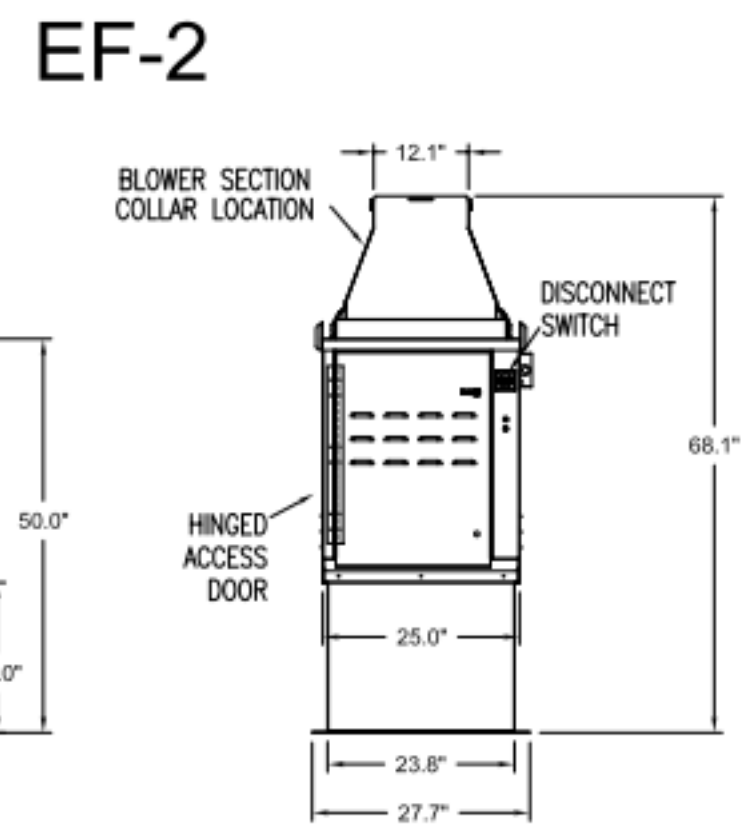
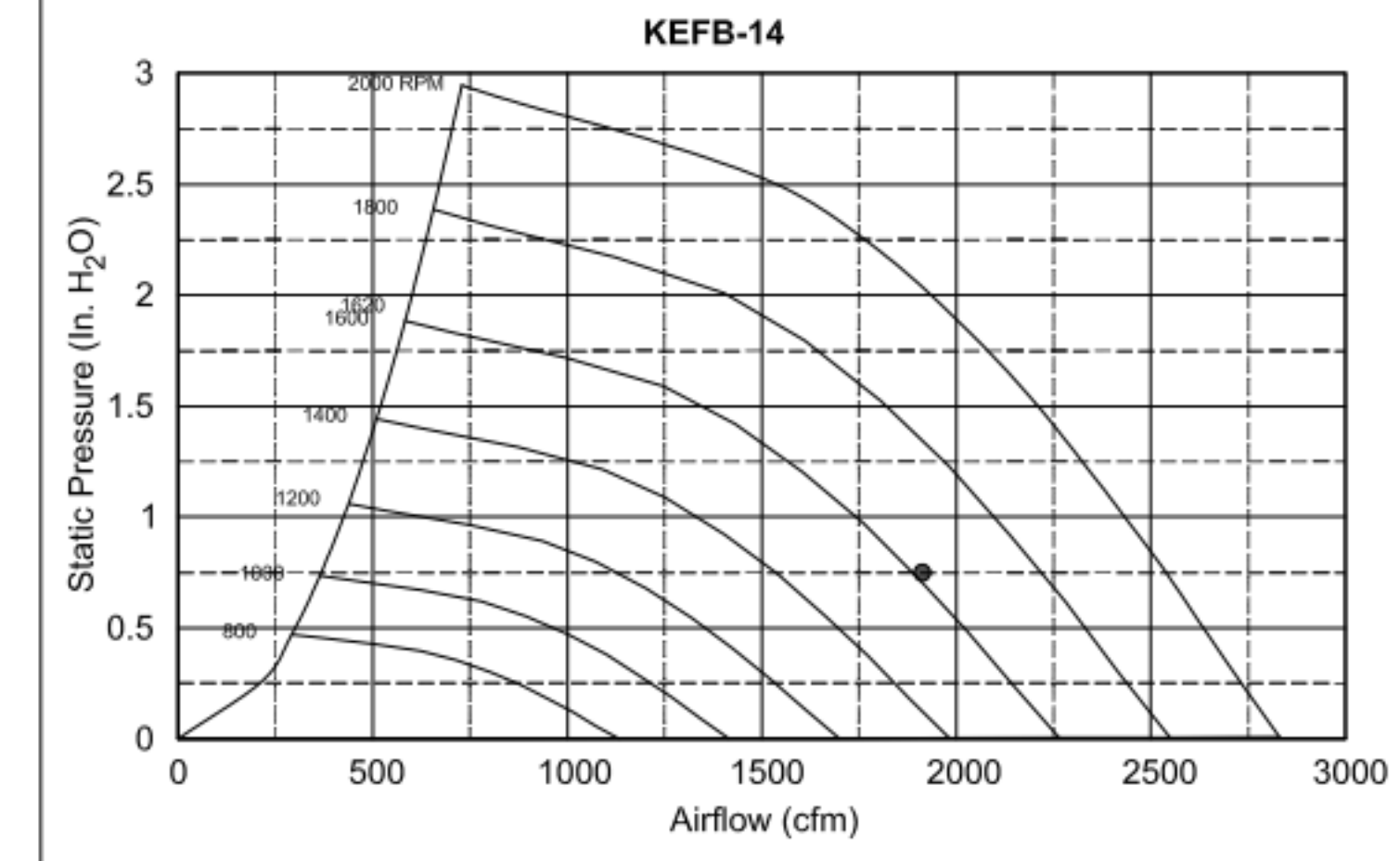
Halton
 CARE FOR INDOOR AIR

Sheet MH-1.2



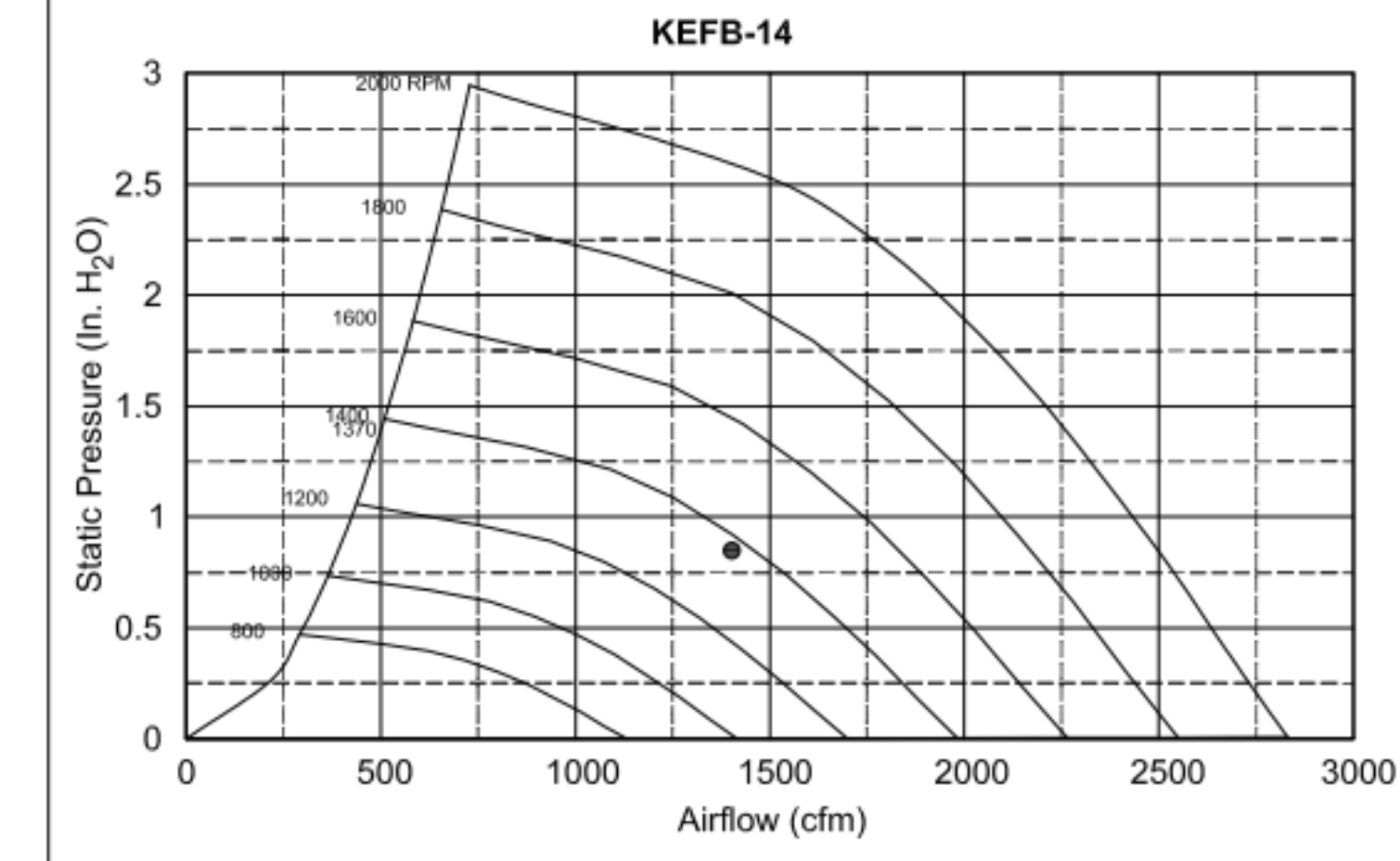
Halton KEFB Exhaust Fan

| | | | | | | | |
|------------------------|-----------|--------------|---------|---------|-------|-----------------|---------|
| Job Name | Chick-8/A | Item No | KEFB-14 | Fan RPM | 1,620 | Volts/Ph/Amps | 115/160 |
| Location | EF-1 | Model | KEFB-14 | Fan BHP | 0.55 | Motor HP | 0.75 |
| Date | 1/26/2023 | Airflow, cfm | 1,913 | dB | 85.3 | TAB Port, in WC | 4.8 |
| Static Pressure, in WC | 0.75 | | | | | | |



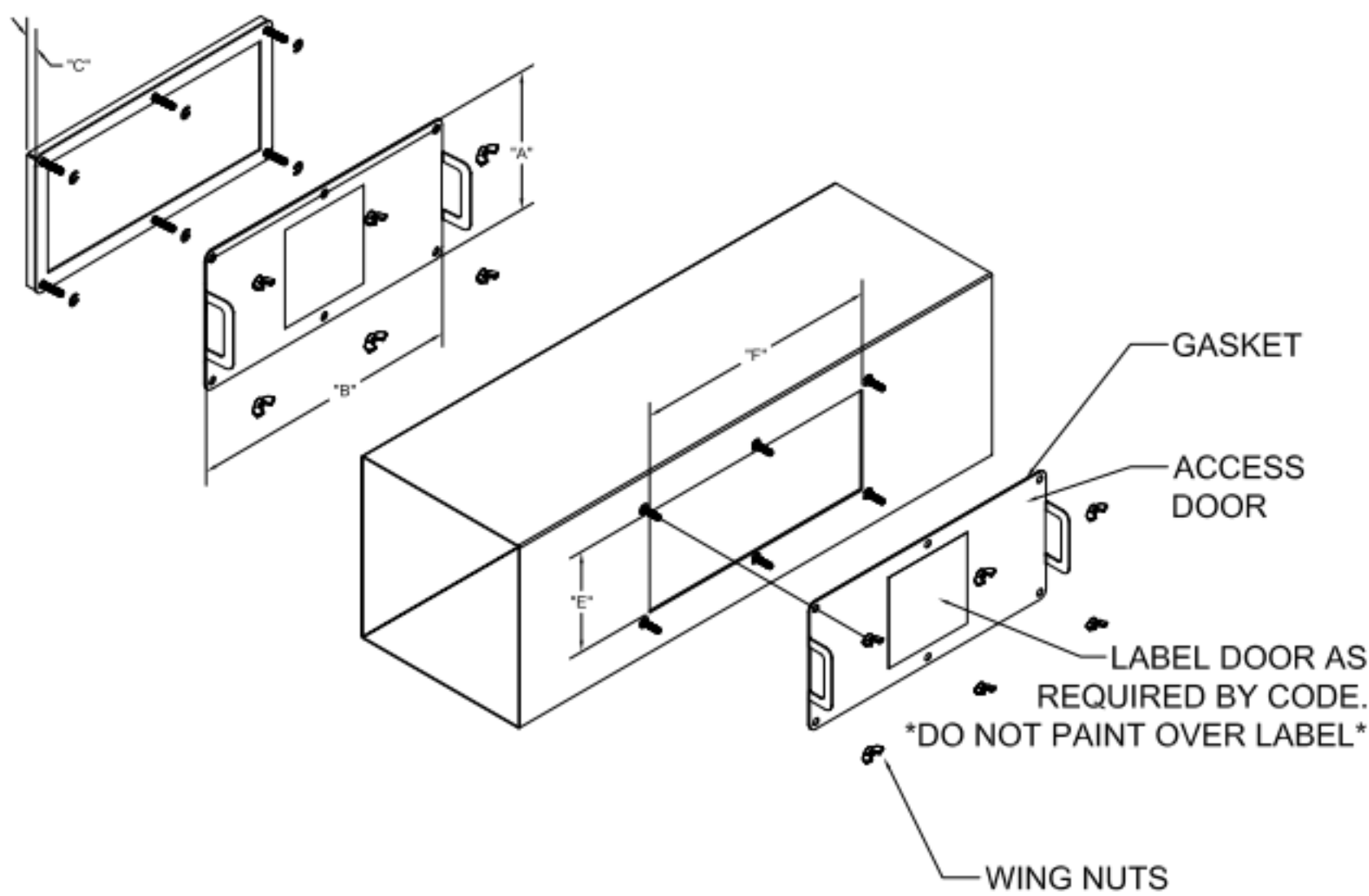
Halton KEFB Exhaust Fan

| | | | | | | | |
|------------------------|-----------|--------------|---------|---------|-------|-----------------|---------|
| Job Name | Chick-6/A | Item No | KEFB-14 | Fan RPM | 1,370 | Volts/Ph/Amps | 115/160 |
| Location | EF-2 | Model | KEFB-14 | Fan BHP | 0.34 | Motor HP | 0.75 |
| Date | 1/26/2023 | Airflow, cfm | 1,402 | dB | 81 | TAB Port, in WC | 2.6 |
| Static Pressure, in WC | 0.95 | | | | | | |

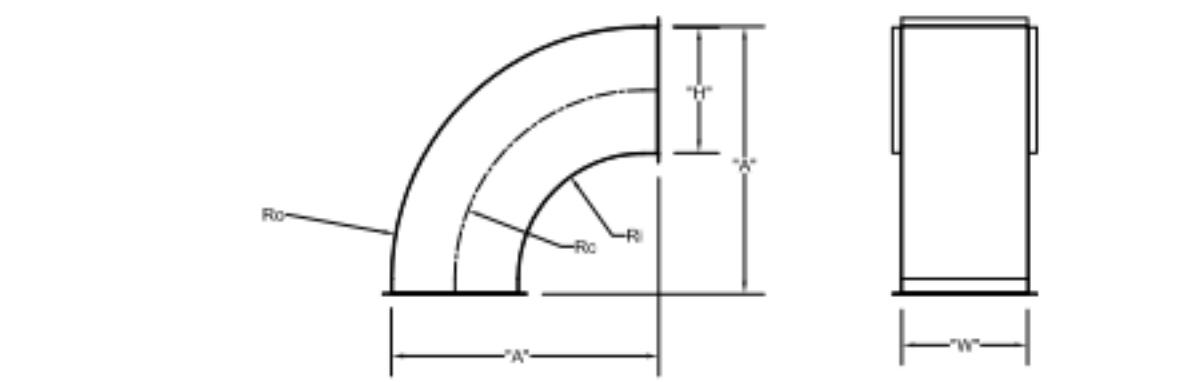


| MODEL | DOOR SIZE | | OPTIONAL FLANGE | OPENING SIZE | |
|---------|-----------|-----|-----------------|--------------|------|
| | "A" | "B" | | "E" | "F" |
| KAP0715 | 7 | 15 | FLAT | 5.5 | 13.5 |
| KAP1015 | 10 | 15 | 1/2 | 7 | 12 |

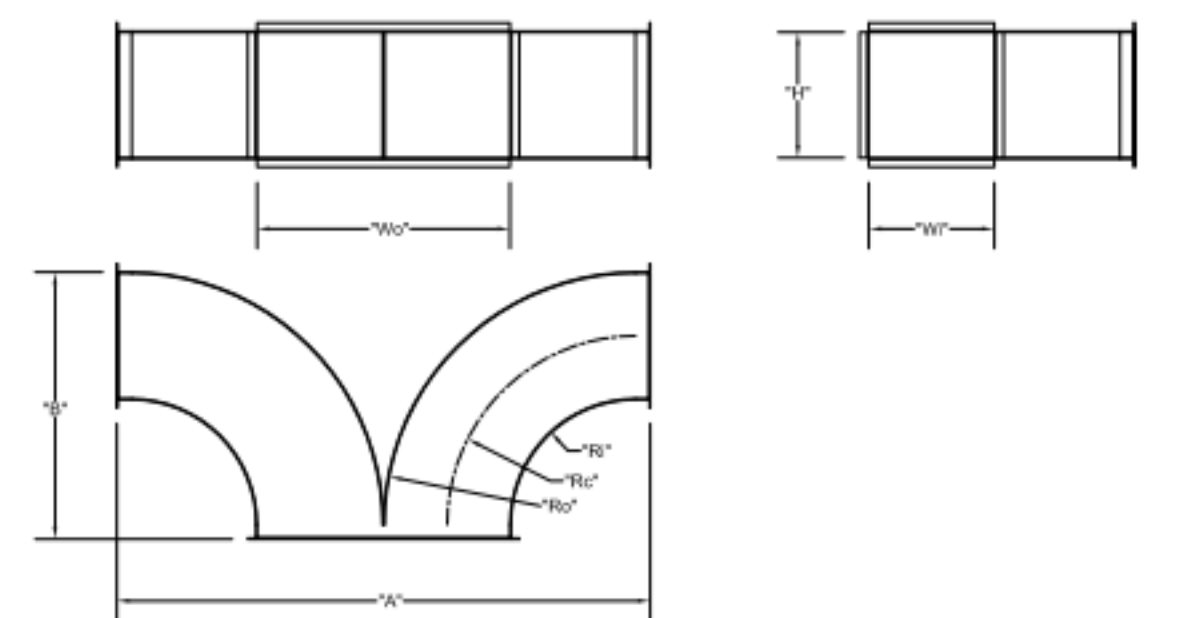
ACCESS DOORS SHALL BE U.L. 1978 LISTED OR FIELD FABRICATED, REQUIRE NO TOOLS FOR REMOVAL AND MEET THE REQUIREMENTS OF THE CURRENT EDITION OF THE IMC. ACCESS DOOR SHALL BE SECURED WITH THUMB SCREWS. ACCESS DOORS SHALL BE SEALED WITH A MINIMUM 1500 DEREK GASKET MATERIAL.



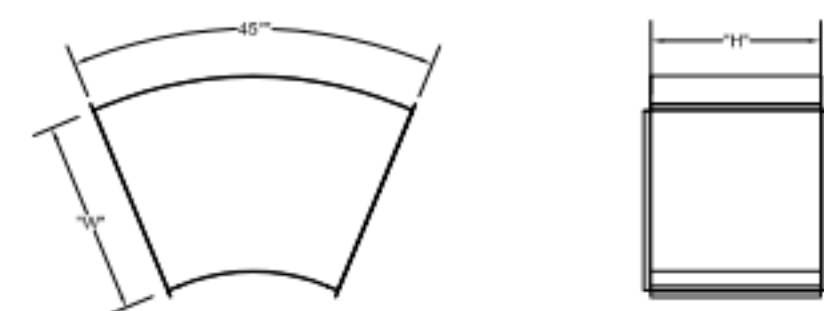
INSTALL PER MANUFACTURER'S INSTRUCTIONS



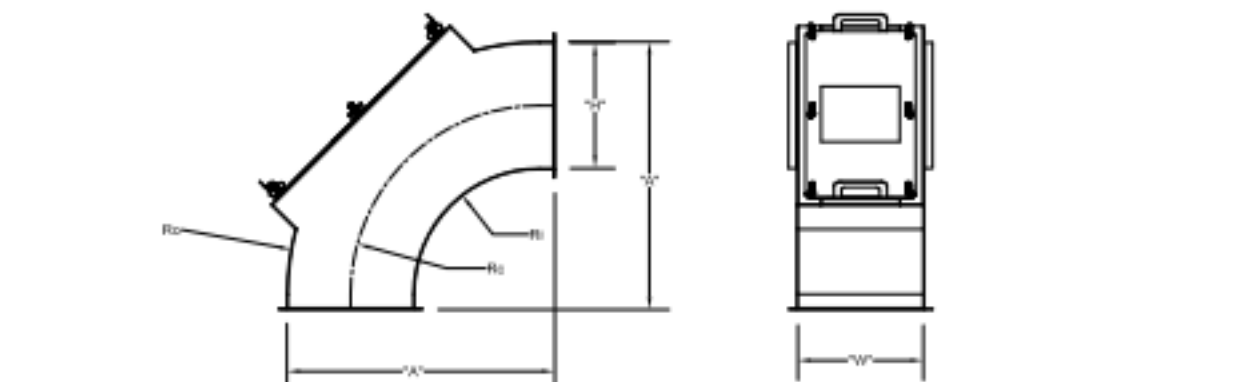
| | "H" | "W" | "A" | Ro | Rc | Ri |
|------|-----|-----|-----|----|----|----|
| EF-2 | 8 | 8 | 17 | 16 | 12 | 8 |
| EF-2 | 8 | 10 | 17 | 16 | 12 | 8 |



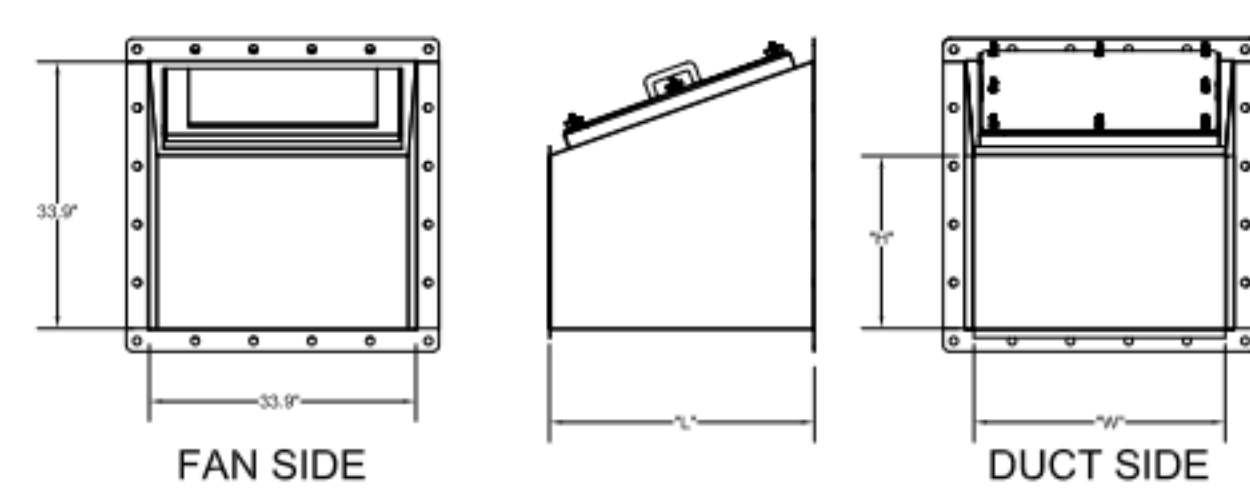
| | "W" | "H" | Wo | Ro | Rc | Ri | "A" | "B" |
|------|-----|-----|----|----|----|----|-----|-----|
| EF-1 | 8 | 14 | 16 | 16 | 12 | 8 | 34 | 17 |
| EF-2 | 8 | 10 | 16 | 16 | 12 | 8 | 34 | 17 |



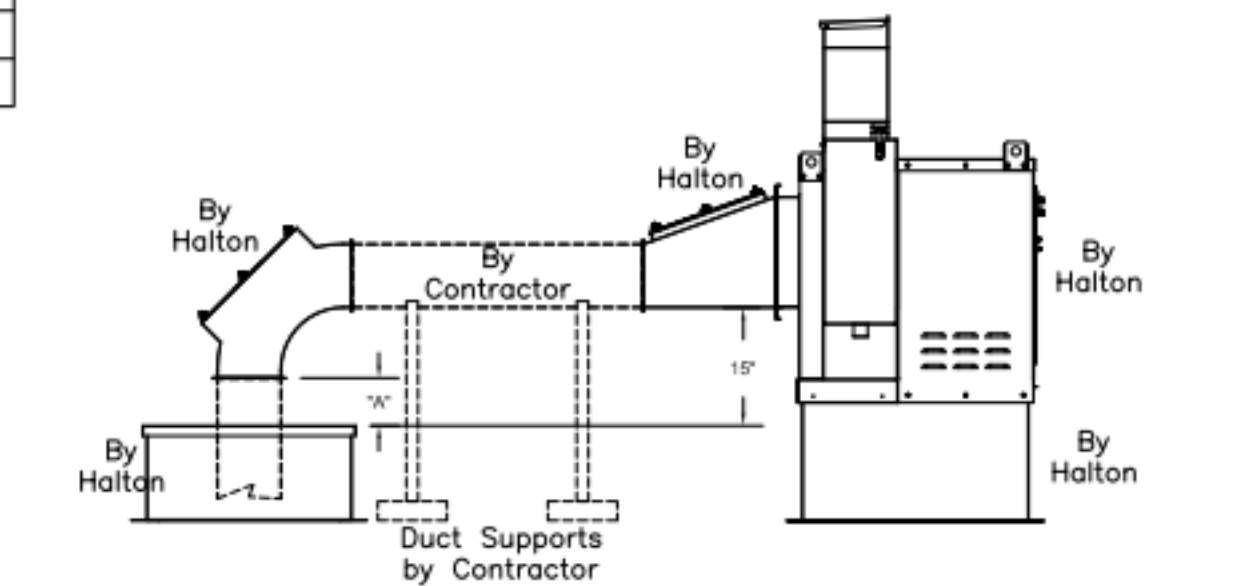
| | "W" | "H" |
|------|-----|-----|
| EF-1 | 16 | 14 |



| | "H" | "W" | "A" | Ro | Rc | Ri |
|------|-----|-----|-----|----|----|----|
| EF-2 | 14 | 8 | 29 | 28 | 21 | 14 |
| EF-2 | 8 | 8 | 17 | 16 | 12 | 8 |



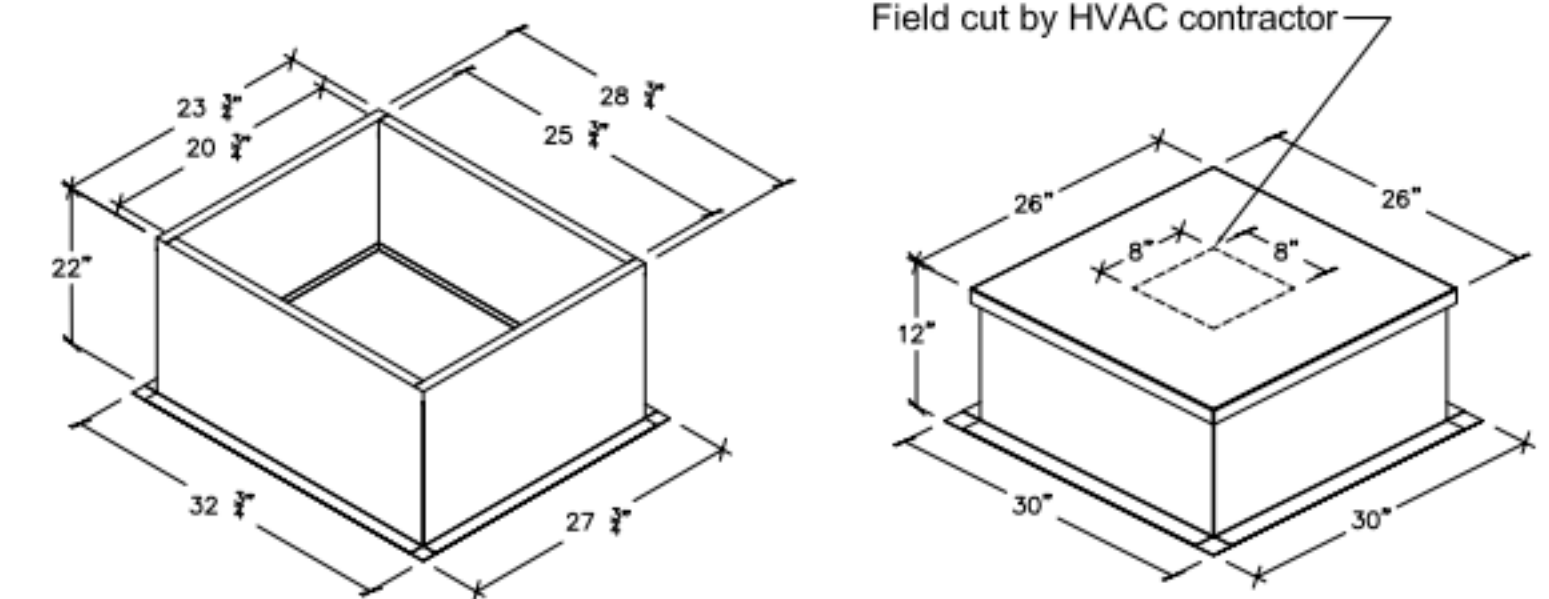
| TRANSITION | "H" | "W" | "L" |
|------------|-----|-----|-----|
| EF-1 (5) | 14 | 16 | 25 |
| EF-2 (6) | 10 | 16 | 17 |



"A" DISTANCE AVAILABLE FOR DUCT SLOPE

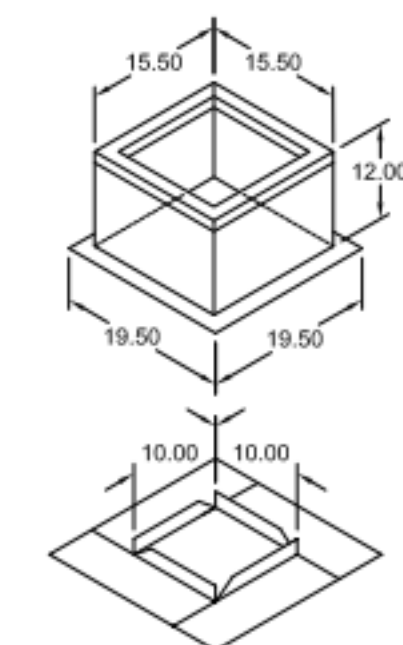
| | ELBOW | "A" |
|------|-------|-----|
| EF-1 | 14X8 | 8 |
| EF-2 | 8X8 | 10 |

Halton Kitchen Exhaust Fan Curb Insulated Duct Curb



Kitchen Exhaust Fan Roof Curb Standard Construction Features:
 - Roof Curb fits between the building roof and the fan mounted directly to the roof support structure - Constructed of 18 ga aluminum steel - Straight Sided without a cant - 2 in. mounting flange - Height is 22 in.

Insulated Duct Curb Standard Construction Features:
 - Roof Curb fits between the building roof and the fan mounted directly to the roof support structure - Constructed of 18 ga aluminum steel - Straight Sided without a cant - 2 in. mounting flange - Height is 12 in. - 16 ga. cap



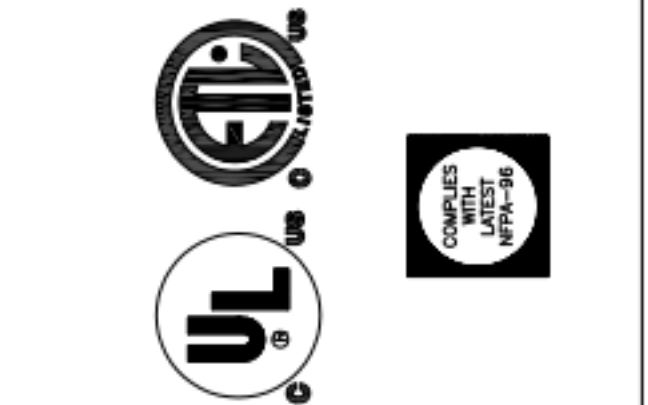
Model: GPI
 For Model: XRED-090-G
 Curb & Damper Tray

| Accessories | | Security | Insulation | Insulation |
|-------------|------------|----------|------------|---------------|
| Material | Galvanized | Bars | Liner | (in.) R Value |
| No | No | No | No | R4.3 |

| Tag | Qty | Model | Sizing Method | Undersizing (in.) | Weight (lb.) | Shipped Assembled | Union Label |
|------|-----|--------|---------------|-------------------|--------------|-------------------|---------------|
| EF-3 | 1 | GPI-17 | Nominal | 1.5 | 14 | Yes | No Preference |

| Curb Height (in.) | Nominal Width (in.) | Nominal Outside Length (in.) | Actual Outside Width (in.) | Actual Outside Length (in.) | Actual Inside Width (in.) | Actual Inside Length (in.) | Flange Width (in.) | Flange Length (in.) | Hinge Base Width* (in.) | Hinge Base Length* (in.) |
|-------------------|---------------------|------------------------------|----------------------------|-----------------------------|---------------------------|----------------------------|--------------------|---------------------|-------------------------|--------------------------|
| | 12 | 17 | 17 | 15.5 | 15.5 | 12 | 12 | 19.5 | 16 | |

THIS DRAWING MUST BE CHECKED, SIGNED AND RETURNED TO THE APPROPRIATE FACTORY. PLEASE VERIFY THE FOLLOWING:
 1. ALL DIMENSIONAL INFORMATION, MOUNTING POSITIONS AND CLEARANCES.
 2. THE LOCATION AND TYPE OF COOKING EQUIPMENT.
 NOTE TO APPROVER: ANY CHANGES IN COOKING EQUIPMENT SUCH AS INCREASED ENERGY INPUTS OR EQUIPMENT CHANGES IN COOKING EQUIPMENT WHICH MAY CAUSE EXHAUST AIRFLOW CHANGES OCCUR, A RECALCULATION EXHAUST AIRFLOW MAY BE REQUIRED.
 REVISE AND RESUBMIT
 APPROVED FOR FABRICATION
 WITH NO CHANGES
 WITH CHANGES AS NOTED
 APPROVED BY: _____ DATE: _____



WEBSITE: www.halton.com
 HALTON CO. (USA)
 101 INDUSTRIAL DRIVE
 SCOTTSVILLE, KY 42164
 1-270-237-5600
 DATE: _____ BY: _____

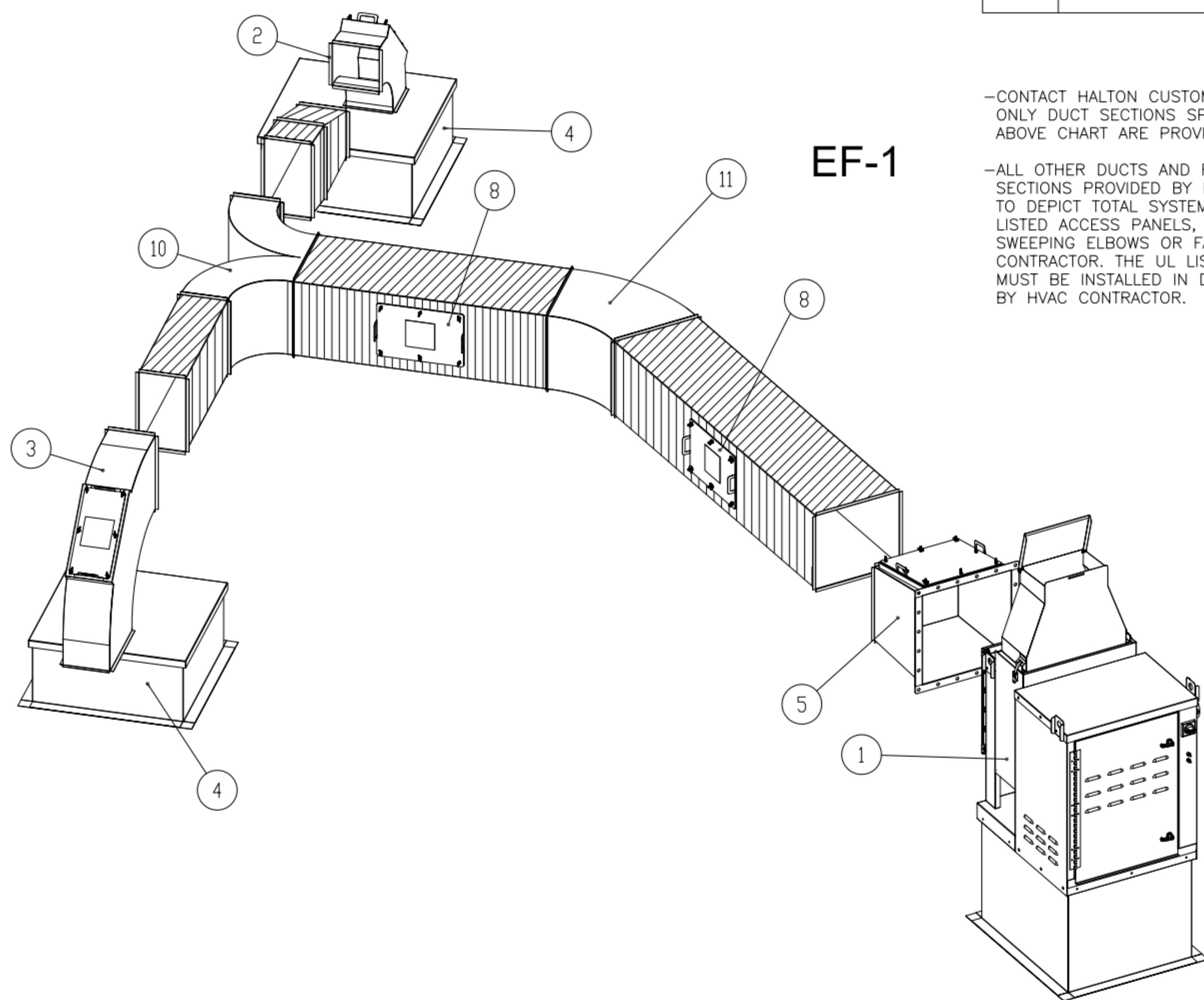
MAIL APPROVED DRAWINGS TO APPROPRIATE FACTORY BELOW:
 HALTON CO. (CANADA)
 1021 BREVIK PLACE
 MISSISSAUGA, ON L4W 3R7
 1-905-624-0301
 REVISION DESCRIPTION
 REV. _____

PROJECT: CHICK-FIL-A FAN DETAILS
 LOCATION: PROTO SE/LE/LS/LSR (BN & BP)
 DRAWN BY: ACF DATE: 05.10.23
 SCALE: _____
 CONSULTANT: _____

DRAWING TITLE: CFA FAN DETAILS
 DRAWING No.: U23-459
 REV. NO.: 0 SHEET NO.: 1 of 2

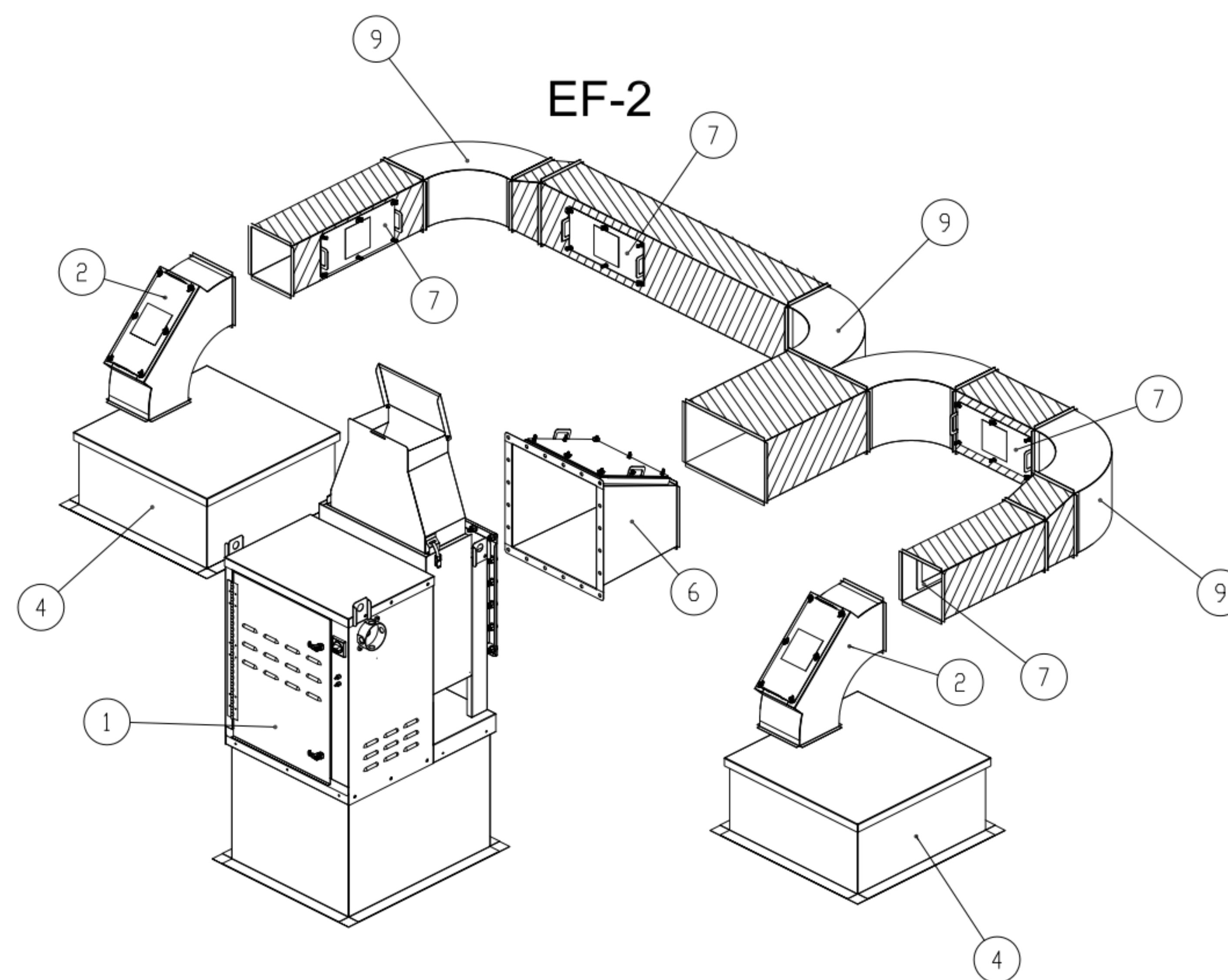


| ITEM | DESCRIPTION | QTY |
|------|--|-----|
| 1 | KEFB EXHAUST FAN W/ ROOF CURB | 2 |
| 2 | LONG SWEEPING ELBOW W/ UL LISTED ACCESS PANEL 8X8 | 3 |
| 3 | LONG SWEEPING ELBOW W/ UL LISTED ACCESS PANEL 14X8 | 1 |
| 4 | DUCT ROOF CURB W/ CAP 26X26X9 | 4 |
| 5 | FAN TRANSITION W/ UL LISTED ACCESS PANEL 14X16 | 1 |
| 6 | FAN TRANSITION W/ UL LISTED ACCESS PANEL 10X16 | 1 |
| 7 | UL LISTED ACCESS PANEL 7X15 | 4 |
| 8 | UL LISTED ACCESS PANEL 10X15 | 2 |
| 9 | LONG SWEEPING WYE 8X10 | 1 |
| 10 | LONG SWEEPING WYE 14X8 | 1 |
| 11 | 45° 14X16 | 1 |



-CONTACT HALTON CUSTOMER SERVICE FOR HALTON PROVIDED ITEMS ONLY DUCT SECTIONS SPECIFIED BY NUMBERS AND SHOWN IN THE ABOVE CHART ARE PROVIDED BY HALTON

-ALL OTHER DUCTS AND FITTINGS BY HVAC CONTRACTOR. DUCT SECTIONS PROVIDED BY HVAC CONTRACTOR ARE SHOWN IN ORDER TO DEPICT TOTAL SYSTEM DESIGN. DUCT SECTIONS SHOWN WITH UL LISTED ACCESS PANELS, THAT ARE NOT HALTON PROVIDED LONG SWEEPING ELBOWS OR FAN TRANSITIONS, ARE PROVIDED BY HVAC CONTRACTOR. THE UL LISTED ACCESS PANELS PROVIDED BY HALTON MUST BE INSTALLED IN DUCT SECTIONS NOT PROVIDED BY HALTON BY HVAC CONTRACTOR.



-ALL DUCTS AND FITTINGS DEPICTED BY HATCH AREAS ARE BY HVAC CONTRACTOR.

THIS DRAWING MUST BE CHECKED, SIGNED AND RETURNED TO THE APPROPRIATE FACTORY. PLEASE VERIFY THE FOLLOWING:
 1. ALL DIMENSIONAL INFORMATION, MOUNTING POSITIONS AND CLEARANCES.
 2. THE LOCATION AND TYPE OF COOKING EQUIPMENT.
 NOTE: APPROVED COOKING EQUIPMENT SUCH AS INCREASED ENERGY INPUTS OR EQUIPMENT POSITION MAY AFFECT EXHAUST AIRFLOW. HALTON MUST BE NOTIFIED IF ANY OF THESE CHANGES OCCUR, A RECALCULATION EXHAUST AIRFLOW MAY BE REQUIRED.
 REVISE AND RESUBMIT
 APPROVED FOR FABRICATION
 WITH NO CHANGES
 WITH CHANGES AS NOTED
 APPROVED BY: _____ DATE: _____

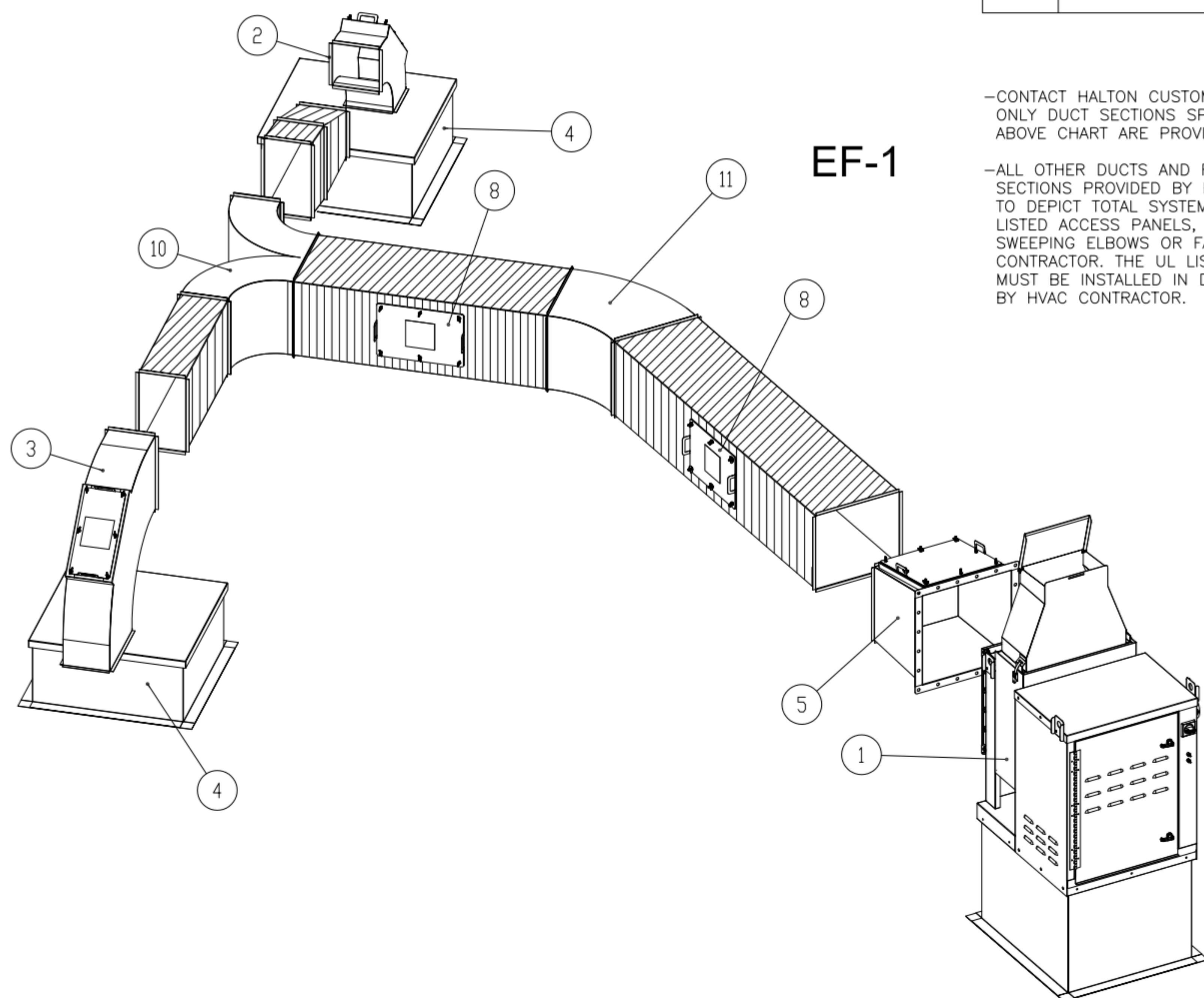


| | |
|----------------|-------------------------|
| PROJECT: | CHICK-FIL-A FAN DETAILS |
| DRAWING TITLE: | CFA FAN DETAILS |
| DRAWING No.: | U23-459 |
| REV. No.: | 0 |
| SHEET No.: | 2 of 2 |

MAIL APPROVED DRAWINGS TO APPROPRIATE FACTORY BELOW:
 WEBSITE: www.halton.com
 HALTON CO. (CANADA)
 1021 BREVIK PLACE
 MISSISSAUGA, ON L4W 3R7
 1-905-624-0301
 REVISION DESCRIPTION
 BY DATE
 HALTON CO. (USA)
 101 INDUSTRIAL DRIVE
 SCOTTSVILLE, KY 42164
 1-270-237-5600



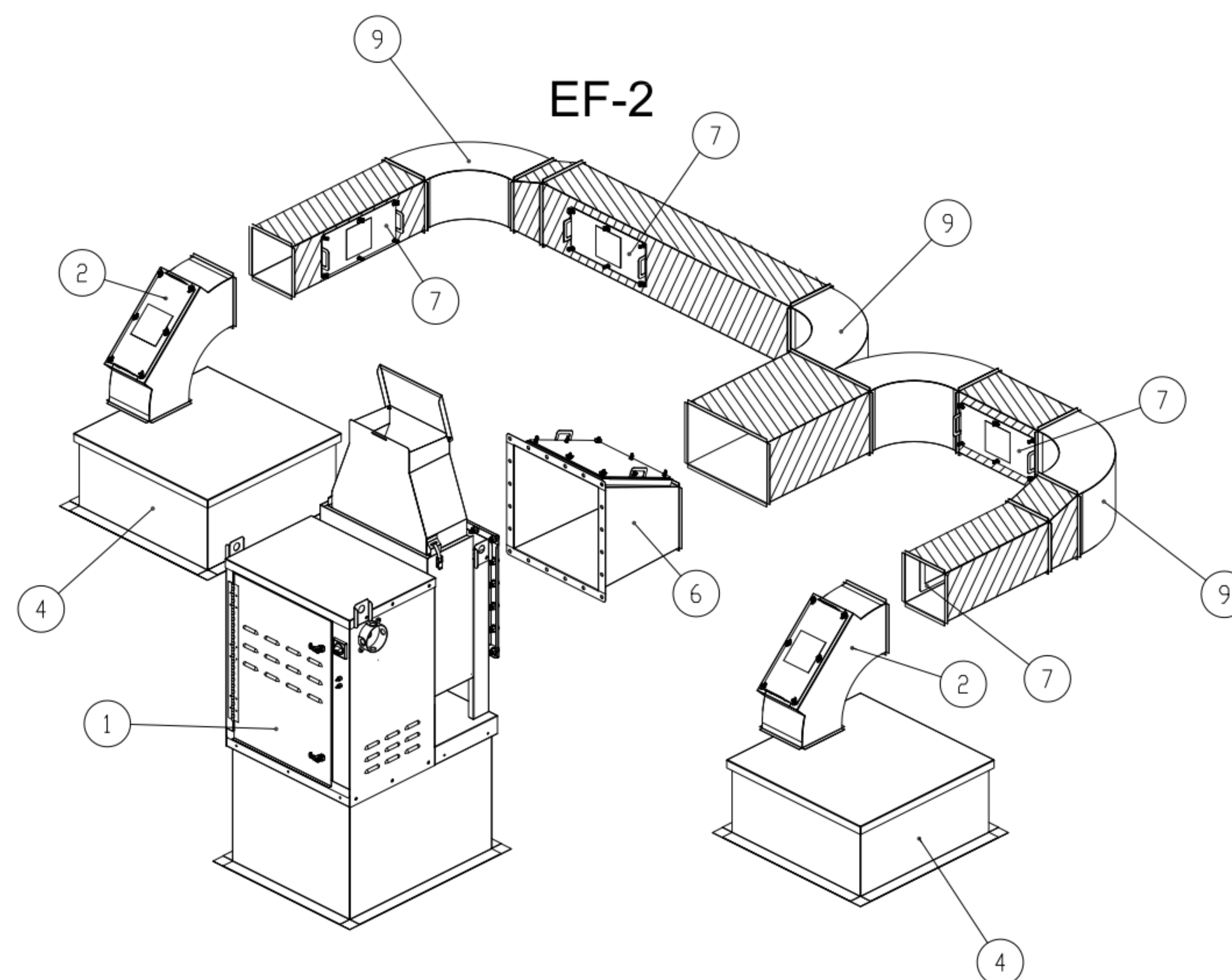
| ITEM | DESCRIPTION | QTY |
|------|--|-----|
| 1 | KEFB EXHAUST FAN W/ ROOF CURB | 2 |
| 2 | LONG SWEEPING ELBOW W/ UL LISTED ACCESS PANEL 8X8 | 3 |
| 3 | LONG SWEEPING ELBOW W/ UL LISTED ACCESS PANEL 14X8 | 1 |
| 4 | DUCT ROOF CURB W/ CAP 26X26X9 | 4 |
| 5 | FAN TRANSITION W/ UL LISTED ACCESS PANEL 14X16 | 1 |
| 6 | FAN TRANSITION W/ UL LISTED ACCESS PANEL 10X16 | 1 |
| 7 | UL LISTED ACCESS PANEL 7X15 | 4 |
| 8 | UL LISTED ACCESS PANEL 10X15 | 2 |
| 9 | LONG SWEEPING WYE 8X10 | 1 |
| 10 | LONG SWEEPING WYE 14X8 | 1 |
| 11 | 45° 14X16 | 1 |



EF-1

-CONTACT HALTON CUSTOMER SERVICE FOR HALTON PROVIDED ITEMS ONLY DUCT SECTIONS SPECIFIED BY NUMBERS AND SHOWN IN THE ABOVE CHART ARE PROVIDED BY HALTON

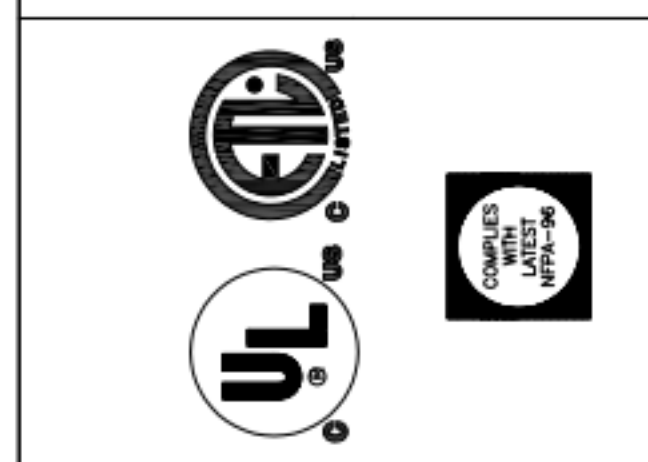
-ALL OTHER DUCTS AND FITTINGS BY HVAC CONTRACTOR. DUCT SECTIONS PROVIDED BY HVAC CONTRACTOR ARE SHOWN IN ORDER TO DEPICT TOTAL SYSTEM DESIGN. DUCT SECTIONS SHOWN WITH UL LISTED ACCESS PANELS, THAT ARE NOT HALTON PROVIDED LONG SWEEPING ELBOWS OR FAN TRANSITIONS, ARE PROVIDED BY HVAC CONTRACTOR. THE UL LISTED ACCESS PANELS PROVIDED BY HALTON MUST BE INSTALLED IN DUCT SECTIONS NOT PROVIDED BY HALTON BY HVAC CONTRACTOR.



EF-2

-ALL DUCTS AND FITTINGS DEPICTED BY HATCH AREAS ARE BY HVAC CONTRACTOR.

THIS DRAWING MUST BE CHECKED, SIGNED AND RETURNED TO THE APPROPRIATE FACTORY. PLEASE VERIFY THE FOLLOWING:
 1. ALL DIMENSIONAL INFORMATION, MOUNTING POSITIONS AND CLEARANCES.
 2. THE LOCATION AND TYPE OF COOKING EQUIPMENT.
 NOTE: APPROVED COOKING EQUIPMENT SUCH AS INCREASED ENERGY INPUTS OR EQUIPMENT POSITION MAY AFFECT EXHAUST AIRFLOW. HALTON MUST BE NOTIFIED IF ANY OF THESE CHANGES OCCUR, A RECALCULATION EXHAUST AIRFLOW MAY BE REQUIRED.
 REVISE AND RESUBMIT
 APPROVED FOR FABRICATION
 WITH NO CHANGES
 WITH CHANGES AS NOTED
 APPROVED BY: _____ DATE: _____



| | |
|--|-------------------------|
| PROJECT: CHICK-FIL-A FAN DETAILS | WEBSITE: www.halton.com |
| LOCATION: PROTO SE/LE/LS/LSR (BN & BP) | HALTON CO. (USA) |
| DRAWN BY: ACF | 101 INDUSTRIAL DRIVE |
| SCALE: _____ | SCOTTSDALE, KY 42164 |
| CONSULTANT: _____ | 1-270-237-5600 |
| DRAWING TITLE: CFA FAN DETAILS | REVISION DESCRIPTION |
| DRAWING No.: U23-459 | BY: _____ DATE: _____ |
| REV. No.: 0 | DATE: 05.10.23 |
| SHEET No.: 2 of 2 | |

MAIL APPROVED DRAWINGS TO APPROPRIATE FACTORY BELOW:

HALTON CO. (CANADA)
 1021 BREVIK PLACE
 MISSISSAUGA, ON L4W 3R7
 1-905-624-0301

HALTON CO. (USA)
 101 INDUSTRIAL DRIVE
 SCOTTSDALE, KY 42164
 1-270-237-5600

Halton