

FOR QUESTIONS, CALL THE
Maryland Mechanical
REGION 76
PHONE: (800) 988 - 0881
EMAIL: reg76@captiveaire.com

PATENT NUMBERS
AC-PSP (UNITED STATES) - US PATENT 7963830 B2
AC-PSP WALL (CANADA) - CA PATENT 2820509
AC-PSP ISLAND (CANADA) - CA PATENT 2520330

HOOD INFORMATION - JOB#7564802

HOOD NO	TAG	MODEL	MANUFACTURER	LENGTH	MAX COOKING TEMP	TYPE	APPLIANCE DUTY	DESIGN CFM/FT	TOTAL EXH CFM	EXHAUST PLENUM RISER(S)						MUA CFM	AC CFM	HOOD CONSTRUCTION	HOOD CONFIG		
										WIDTH	LENG	HEIGHT	DIA	CFM	VEL				SP	END TO END	ROW
1		6030 ND-2-ACPSP-F	CAPTIVEAIRE	11' 7"	600 DEG	I	HEAVY	200	2317			4"	16"	2317	1659	-0.765"	1691	844	430 SS WHERE EXPOSED	ALONE	ALONE

HOOD INFORMATION

HOOD NO	TAG	FILTER(S)				LIGHT(S)				UTILITY CABINET(S)				FIRE SYSTEM PIPING	HOOD HANGING WEIGHT		
		TYPE	QTY	HEIGHT	LENGTH	EFFICIENCY @ 7 MICRONS	QTY	TYPE	WIRE GUARD	LOCATION	SIZE	FIRE SYSTEM	SIZE			ELECTRICAL	SWITCHES
1		CAPTRATE SOLO FILTER	8	20"	16"	85% SEE FILTER SPEC	4	L55 SERIES E26	NO	LEFT	12"x60"x30"	TANK FS	4.0/4.0	DCV-1111	1 LIGHT 1 FAN	YES	1213 LBS

HOOD OPTIONS

HOOD NO	TAG	OPTION
1		FIELD WRAPPER 10.00" HIGH FRONT, LEFT, RIGHT. INSULATION FOR BACK OF HOOD. RIGHT VERTICAL END PANEL 27" TOP WIDTH, 21" BOTTOM WIDTH, 80" HIGH INSULATED 430 SS. LEFT VERTICAL END PANEL 27" TOP WIDTH, 21" BOTTOM WIDTH, 80" HIGH INSULATED 430 SS.

PERFORATED SUPPLY PLENUM(S)

HOOD NO	TAG	POS	LENGTH	WIDTH	HEIGHT	TYPE	RISER(S)				
							WIDTH	LENG	DIA	CFM	SP
1		Front	151"	22"	6"	MUA	10"	28"		563	0.148"
						MUA	10"	28"		563	0.148"
						MUA	10"	28"		563	0.148"
						AC	8"	26"		422	0.095"
						AC	8"	26"		422	0.095"

GREASE DUCT & CHIMNEY SPECIFICATIONS:
PROVIDE GREASE DUCT EQUAL TO CAPTIVEAIRE SYSTEMS MODEL "DW" ROUND 20 GAUGE 430 STAINLESS STEEL DUCTWORK. MODEL "DW" IS LISTED TO UL-1978 AND IS INSTALLED USING "V" CLAMP LOCKING CONNECTIONS SEALED WITH 3M FIRE BARRIER 2000 PLUS. MODEL "DW" DOES NOT REQUIRE WELDING PROVIDING IT HAS BEEN INSTALLED PER THE MANUFACTURERS INSTALLATION GUIDE.
PROVIDE RATED ACCESS DOORS AT EVERY CHANGE IN DIRECTION AND EVERY 12' ON CENTER. PER MANUFACTURERS LISTING MODEL "DW" HORIZONTAL RUNS LESS THAN 75 FT. CAN BE SLOPED 1/16" PER 12", HORIZONTAL RUNS MORE THAN 75 FT. CAN BE SLOPED 3/16" PER 12".
DUCT SHOULD BE SLOPED AS MUCH AS POSSIBLE TO REDUCE THE CHANCE OF GREASE ACCUMULATION IN HORIZONTAL RUNS.

IF THE DUCT OR CHIMNEY IS WITHIN 18 INCHES OF COMBUSTIBLE MATERIAL, PROVIDE UL-2221 OR UL-103 HT LISTED DOUBLE WALL GREASE DUCT OR DOUBLE WALL CHIMNEY EQUAL TO CAPTIVEAIRE SYSTEMS MODEL "DW- 2R, 2R TYPE HT, 3R, OR 3Z" ROUND 20 GAUGE 430 STAINLESS INNER DUCT INSULATED WITH A 24 GAUGE 430 STAINLESS OUTER SHELL.

CAPTIVEAIRE SYSTEMS RECOMMENDS THE USE OF LISTED, PRE-FABRICATED ROUND GREASE EXHAUST DUCT TO REDUCE STATIC PRESSURE IN THE SYSTEM, MINIMIZE INSTALLATION AND INSPECTION TIMES, AND ENSURE DUCT IS LIQUID TIGHT

VERIFY CEILING HEIGHT
____' - ____"

HEIGHT REQUIRED TO VERIFY THAT HOOD FITS SPACE AND TO SIZE THE ENCLOSURE PANELS

HVAC DISTRIBUTION NOTE
HIGH VELOCITY DIFFUSERS OR HVAC RETURNS SHOULD NOT BE PLACED WITHIN TEN (10) FEET OF THE EXHAUST HOOD. PERFORATED DIFFUSERS ARE RECOMMENDED.

CUSTOMER APPROVAL TO MANUFACTURE:

APPROVED AS NOTED

APPROVED WITH NO EXCEPTION TAKEN

REVISE AND RESUBMIT

SIGNATURE _____

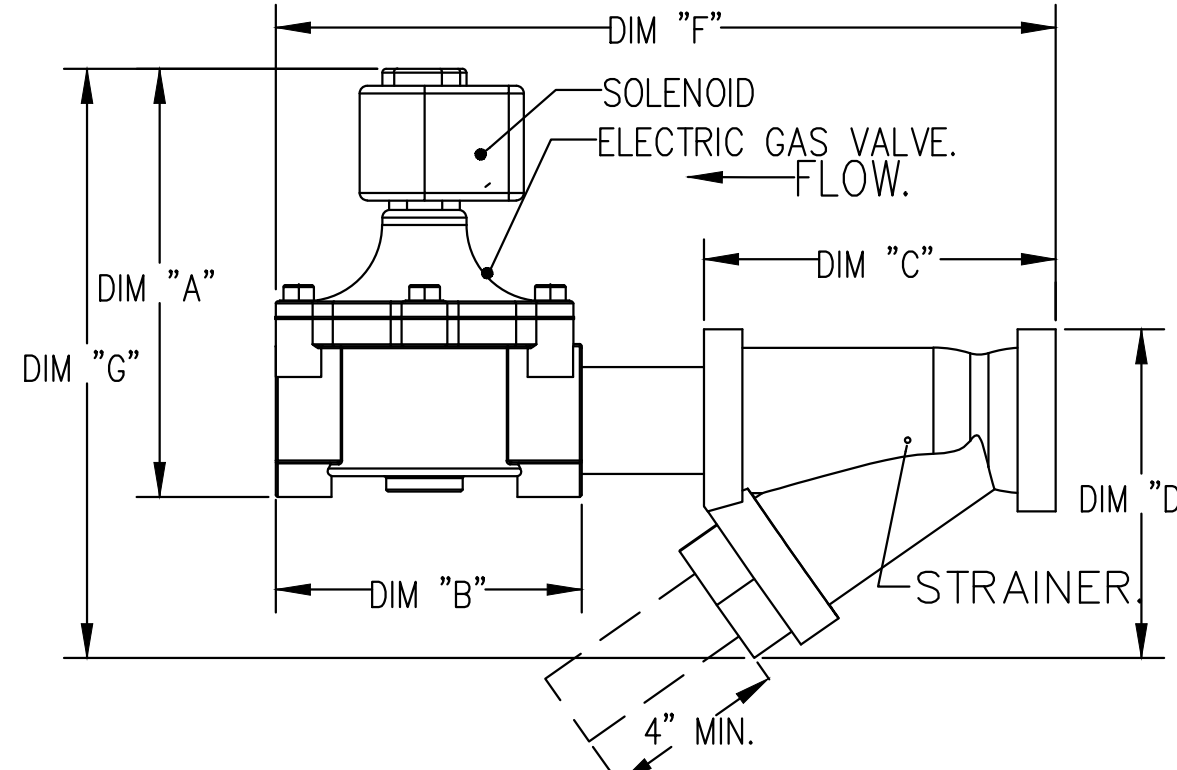
YOUR TITLE _____ DATE _____

GAS VALVES AND STRAINERS																
GAS VALVE SIZING						GAS VALVE DIMENSIONS						INSTALLATION		PART NUMBERS		
TYPE	SIZE	VOLTAGE	MIN. INLET PRESSURE	MAX. INLET PRESSURE	FLOW AT 1 IN.W.C. DROP NATURAL GAS	DIM "A"	DIM "B"	DIM "C"	DIM "D"	DIM "E"	DIM "F"	DIM "G"	PIPE ORIENTATION	GAS VALVE PART NUMBER	STRAINER PART NUMBER	GAS VALVE/STRAINER KIT
ELECTRICAL	2"	120 VAC	0 PSI (0 IN.W.C.)	5 PSI (138 IN.W.C.)	2,940,500 BTU/HR	7-5/8"	6-3/8"	7-1/4"	7-13-16"	15-5/8"	13-15/16"	13-15/16"	HORIZONTAL/VERTICAL	8214280	4417K68	(SC)EGVA2

ELECTRIC GAS VALVES ONLY: SOLENOID ORIENTATION
3/4"-2" 120VAC GAS VALVES CAN BE MOUNTED WITH THE SOLENOID IN ANY POSITION AT OR ABOVE HORIZONTAL.
2 1/2"-3" 120VAC GAS VALVES MUST BE MOUNTED WITH THE SOLENOID VERTICAL AND UPRIGHT.
24VDC GAS VALVES MUST BE MOUNTED WITH THE SOLENOID VERTICAL AND UPRIGHT.

ALL GAS VALVES/STRAINERS
PROPER CLEARANCE MUST BE PROVIDED IN ORDER TO SERVICE THE STRAINERS A MINIMUM OF 4" CLEARANCE DISTANCE MUST BE PROVIDED AT THE BASE OF THE STRAINER. CUSTOMER MUST VERIFY BTU CONSUMPTION AS WELL AS PRESSURE RATING. SPECIFIC GRAVITY OF NATURAL GAS = 0.64, SPECIFIC GRAVITY OF LP = 1.52.

CALCULATIONS
TO CALCULATE GAS FLOW FOR OTHER THAN 1 IN.W.C. PRESSURE DROP
NEW BTU/HR = (BTU/HR AT 1 IN.W.C. PRESSURE DROP) X NEW PRESSURE DROP^{0.85}
TO CALCULATE GAS FLOW FOR OTHER THAN 0.64 SPECIFIC GRAVITY
NEW BTU/HR = (BTU/HR AT 0.64) X (0.64 / NEW SPECIFIC GRAVITY)^{0.85}



SPECIFICATION: CAPTRATE GREASE-STOP SOLO FILTER

THE CAPTRATE GREASE-STOP SOLO FILTER IS A SINGLE-STAGE FILTER FEATURING A UNIQUE S-BAFFLE DESIGN IN CONJUNCTION WITH A SLOTTED REAR BAFFLE DESIGN TO DELIVER EXCEPTIONAL FILTRATION EFFICIENCY.

FILTER IS STAINLESS STEEL CONSTRUCTION, AND SIZED TO FIT INTO STANDARD 2-INCH DEEP HOOD CHANNEL(S).

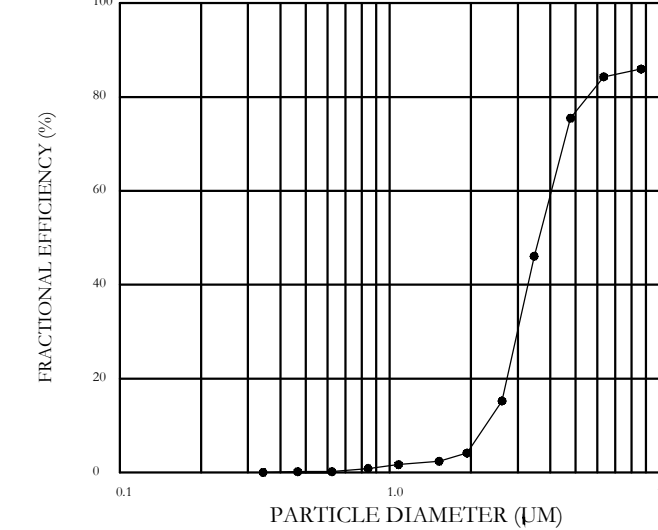
UNITS SHALL INCLUDE STAINLESS STEEL HANDLES AND A FASTENING DEVICE TO SECURE THE TWO COMPONENTS WHEN ASSEMBLED.

GREASE EXTRACTION EFFICIENCY PERFORMANCE SHALL REMOVE AT LEAST 75% OF GREASE PARTICLES FIVE MICRONS IN SIZE, AND 85% GREASE PARTICLES SEVEN MICRONS IN SIZE AND LARGER, WITH A CORRESPONDING PRESSURE DROP NOT TO EXCEED 1.0 INCHES OF WATER GAUGE.

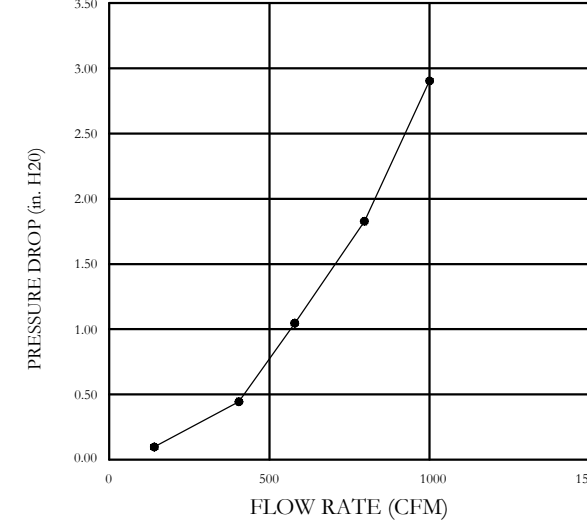
THE CAPTRATE GREASE-STOP SOLO WAS TESTED TO ASTM STANDARD ASTM F2519-05.

MANUFACTURER APPROVED FOR USE IN SOLID FUEL APPLICATIONS AS A SPARK ARRESTER.

EFFICIENCY VS. PARTICLE DIAMETER



PRESSURE DROP VS. FLOW RATE



CAPTRATE FILTERS ARE BUILT IN COMPLIANCE WITH:
NFPA #96
NSF STANDARD #2
UL STANDARD #1046
INT. MECH. CODE (IMC)
ULC-S649.



REVISIONS	
DESCRIPTION	DATE

CAPTIVEAIRE
Maryland Mechanical
5523 Research Park Drive, Suite 250, Catonsville, MD, 21228
PHONE: (800) 988 - 0881 FAX: 9192279931 EMAIL: reg76@captiveaire.com

Cava - Delray Beach, FL_R1
1831 South Federal Highway,
Delray Beach, FL, 33483

DATE: 6/4/2025
DWG.#: 7564802
DRAWN BY: ABS-76
SCALE: NTS
MASTER DRAWING

SHEET NO. 1



589 w nationwide blvd ste b
columbus, ohio 43215
tel: 614.481.2292
fax: 614.481.8777

COPYRIGHT 2025.
ALL DRAWINGS AND SPECIFICATIONS SHALL REMAIN THE PROPERTY OF ANNEX ENGINEERING GROUP AND MAY NOT BE USED, DUPLICATED OR ALTERED WITHOUT THE WRITTEN CONSENT OF THE ENGINEER.

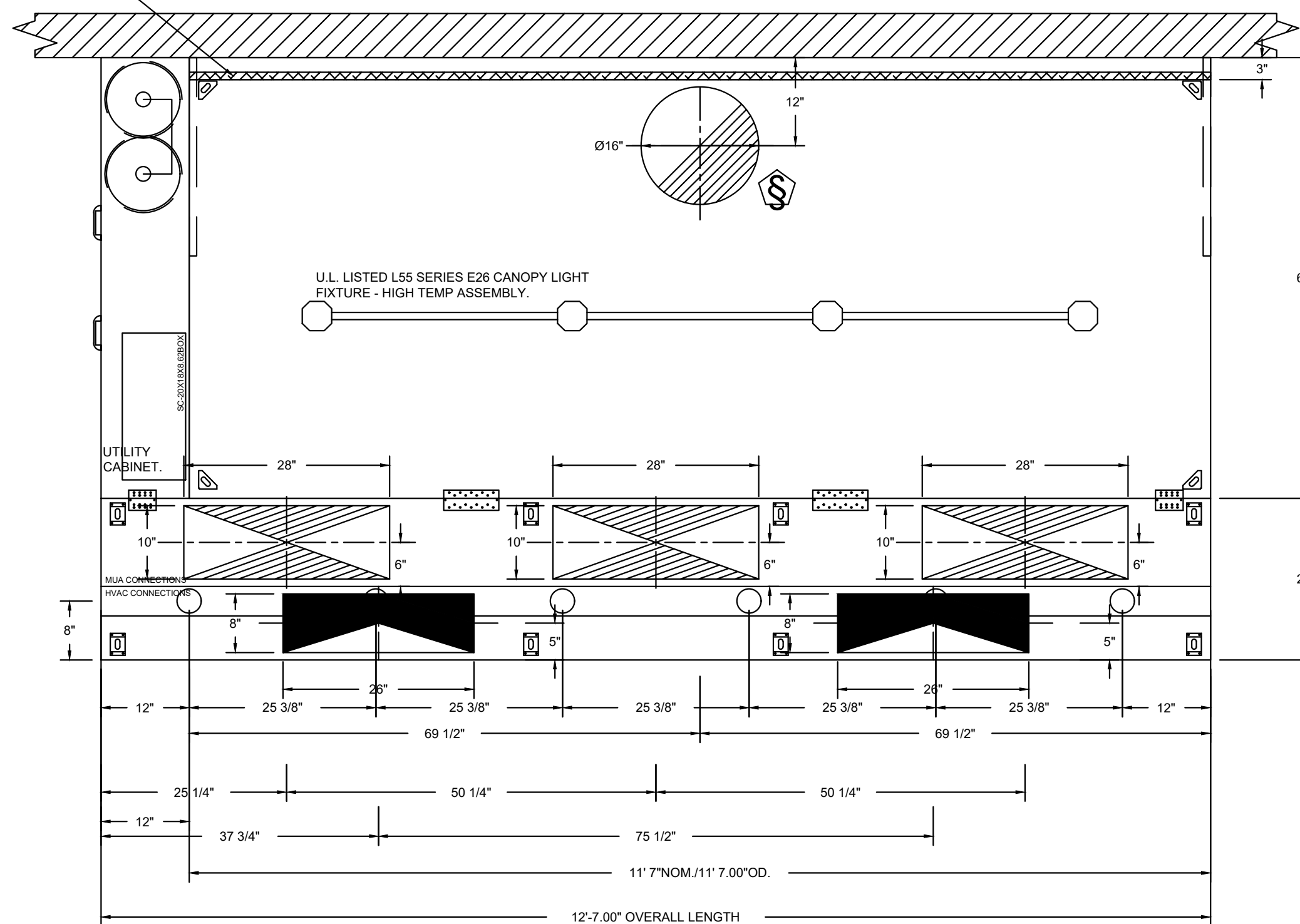
CAVA
PROJECT NUMBER: CAV148
ISSUE DATE: 1.17.2025
PERMIT SET DATE: 3.14.2025
REVISION 1 DATE: 1.10.2025
REVISION 2 DATE: 7.18.2025
CONSTRUCTION SET

HOOD DRAWINGS FOR REFERENCE ONLY

SHEET: H1.1

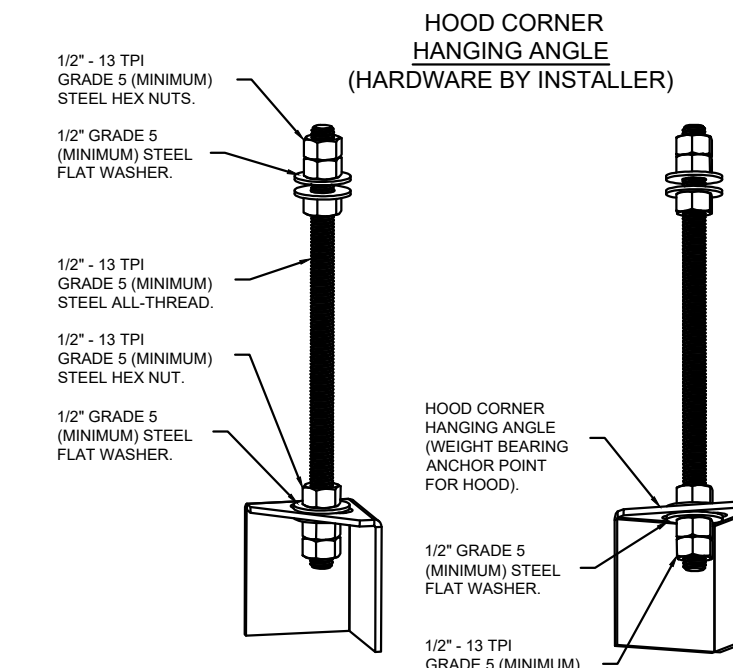
HOOD DRAWINGS FOR REFERENCE ONLY

1" LAYER OF INSULATION FACTORY INSTALLED IN INTERNAL BACK STANDOFF. MEETS 0 INCH REQUIREMENTS FOR CLEARANCE TO COMBUSTIBLE SURFACES.



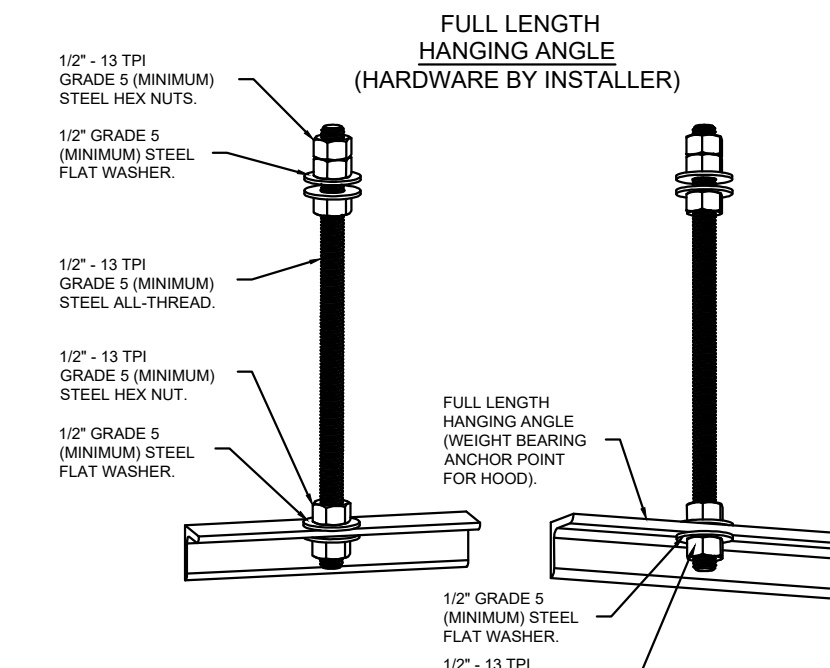
PLAN VIEW - HOOD #1
11' 7.00" LONG 6030ND-2-ACPSP-F

LIGHTING FOR ACPSP JOB # 7564802 - HOOD #1
INPUT: 120V AC, 1 PHASE, 50/60HZ, 3.5 WATTS PER LIGHT.
TO CONTROL LIGHTS WITH HOOD LIGHT SWITCH, WIRE PER HOOD ELECTRICAL CONTROL PANEL SCHEMATIC TO CONTROL LIGHTS WITH BUILDING LIGHT SWITCH, WIRE BLACK AND WHITE WIRE TO A 120VAC SERVICE END TO END ACPSPS REQUIRE 120VAC FIELD WIRING FROM J-BOX TO J-BOX. REPLACE LIGHTS WITH LED LIGHTS ONLY.



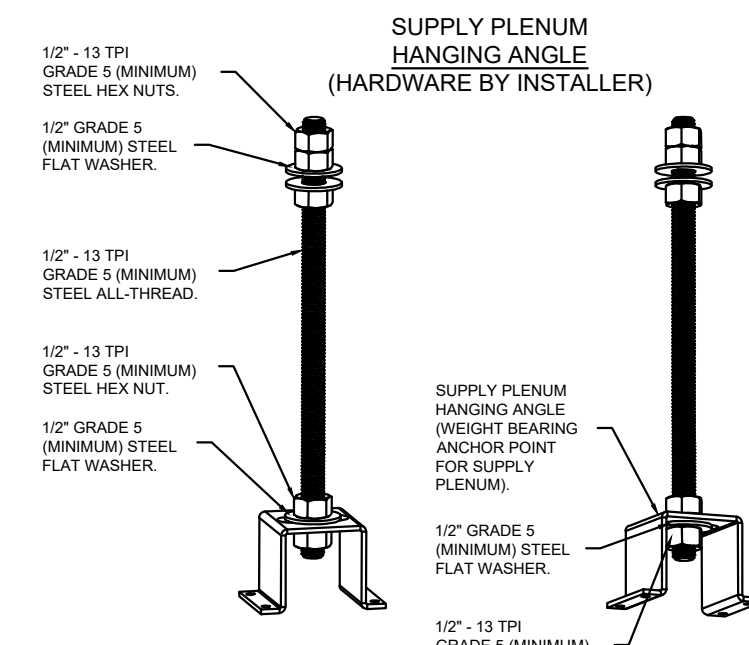
ASSEMBLY INSTRUCTIONS

HANGING ANGLE MUST BE SUPPORTED WITH 1/2" - 13 TPI GRADE 5 (MINIMUM) ALL-THREAD. SANDWICH HANGING ANGLES AND CEILING ANCHOR POINTS WITH 1/2" GRADE 5 (MINIMUM) STEEL FLAT WASHERS AND 1/2" - 13 TPI GRADE 5 (MINIMUM) HEX NUTS AS SHOWN. MUST USE DOUBLED HEX NUT CONFIGURATION BENEATH HOOD HANGING ANGLES AND ABOVE CEILING ANCHORS. MAINTAIN 1/4" OF EXPOSED THREADS BENEATH BOTTOM HEX NUT. TORQUE ALL HEX NUTS TO 57 FT-LBS.



ASSEMBLY INSTRUCTIONS

HANGING ANGLE MUST BE SUPPORTED WITH 1/2" - 13 TPI GRADE 5 (MINIMUM) ALL-THREAD. SANDWICH HANGING ANGLES AND CEILING ANCHOR POINTS WITH 1/2" GRADE 5 (MINIMUM) STEEL FLAT WASHERS AND 1/2" - 13 TPI GRADE 5 (MINIMUM) HEX NUTS AS SHOWN. MUST USE DOUBLED HEX NUT CONFIGURATION ABOVE CEILING ANCHORS. SINGLE HEX NUT BENEATH HANGING ANGLE IS ACCEPTABLE FOR FULL LENGTH HANGING ANGLES. MAINTAIN 1/4" OF EXPOSED THREADS BENEATH BOTTOM HEX NUT. TORQUE ALL HEX NUTS TO 57 FT-LBS.



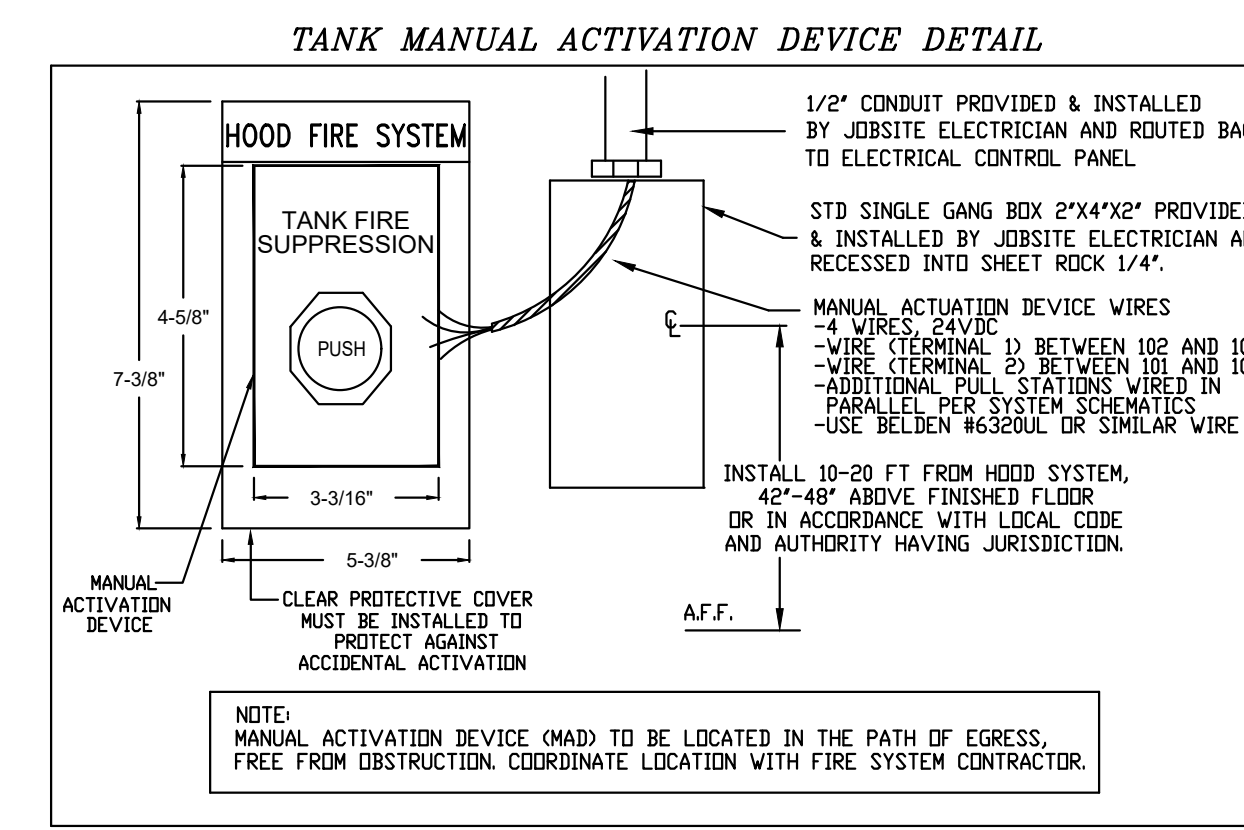
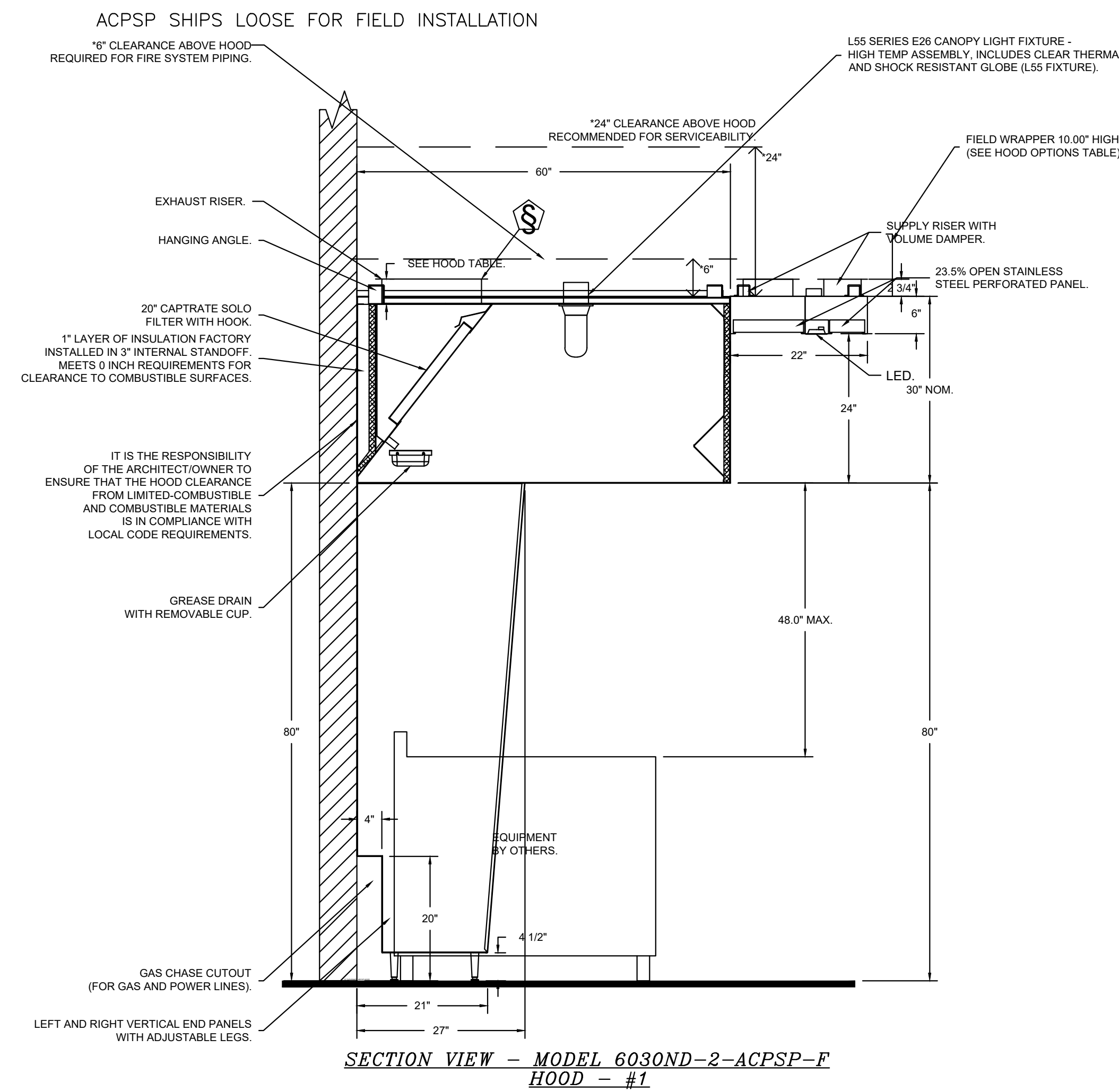
ASSEMBLY INSTRUCTIONS

HANGING ANGLE MUST BE SUPPORTED WITH 1/2" - 13 TPI GRADE 5 (MINIMUM) ALL-THREAD. SANDWICH HANGING ANGLES AND CEILING ANCHOR POINTS WITH 1/2" GRADE 5 (MINIMUM) STEEL FLAT WASHERS AND 1/2" - 13 TPI GRADE 5 (MINIMUM) HEX NUTS AS SHOWN. MUST USE DOUBLED HEX NUT CONFIGURATION ABOVE CEILING ANCHORS. SINGLE HEX NUT BENEATH HANGING ANGLE IS ACCEPTABLE FOR PSP HANGING ANGLES. MAINTAIN 1/4" OF EXPOSED THREADS BENEATH BOTTOM HEX NUT. TORQUE ALL HEX NUTS TO 57 FT-LBS.

CLEARANCE TO COMBUSTIBLES

HOODS #	SURFACE	*CLEARANCE
1	TOP	18"
	FRONT	0"
	BACK	0"
	LEFT	0"
	RIGHT	18"

- 0" CLEARANCE TO COMBUSTIBLES CONFORMS TO UL710 STANDARD.
- HOOD MOUNTED UTILITY CABINETS REQUIRE 36" SERVICE CLEARANCE.



REVISIONS

DESCRIPTION	DATE

CAPTIVE

Maryland Mechanical

5523 Research Park Drive, Suite 250, Catonsville, MD, 21228 PHONE: (800) 988 - 0881 FAX: 9192275931 EMAIL: reg76@captivemechanical.com

Cava - Delray Beach, FL_R1
1831 South Federal Highway,
Delray Beach, FL, 33483

DATE: 6/4/2025

DWG.#: 7564802

DRAWN BY: ABS-76

SCALE: NTS

MASTER DRAWING

SHEET NO. 2

annex ENGINEERING GROUP

589 w nationwide blvd ste b
columbus, ohio 43215
tel: 614.481.2232
fax: 614.487.8777

COPYRIGHT 2025.
ALL DRAWINGS AND SPECIFICATIONS SHALL REMAIN THE PROPERTY OF ANNEX ENGINEERING GROUP AND MAY NOT BE USED, DUPLICATED OR ALTERED WITHOUT THE WRITTEN CONSENT OF THE ENGINEER.

CAVA

CAVA #148 - E DELRAY BEACH, FL
1831 S. FEDERAL HWY. SUITE 300
DELRAY BEACH, FL 33483
FOR CAVA
14 Ridge Square NW #500, WASHINGTON, DC 20016

PROJECT NUMBER: CAV148

ISSUE	DATE
PERMIT SET	1.17.2025
REVISION 1	3.14.2025
REVISION 2	1.10.2025
CONSTRUCTION SET	7.18.2025

HOOD DRAWINGS FOR REFERENCE ONLY

HOOD DRAWINGS FOR REFERENCE ONLY

SHEET: H1.2

HOOD DRAWINGS FOR REFERENCE ONLY

FIRE SYSTEM INFORMATION - JOB#7564802

FIRE SYSTEM NO	TAG	TYPE	SIZE	MAX FP	DESIGN FP	INSTALLATION	
						SYSTEM	LOCATION ON HOOD
1		TANK FS	4.0/4.0	40	37	FIRE CABINET LEFT	LEFT, HOOD 1

CAS VALVE(S)

FIRE SYSTEM NO	TAG	TYPE	SIZE	SUPPLIED BY
1		SC ELECTRICAL	2.000	CAPTIVEAIR SYSTEMS

FIRE SYSTEM PARTS LIST KEY

FIRE SYSTEM NO	TAG	KEY NUMBER - PART DESCRIPTION	QTY BY FACTORY	QTY BY DIST
		0 - 0 - TANK FIRE SUPPRESSION POST-DISCHARGE PROCEDURE UTILITY CABINET LABEL SHEET.	1	0
		0 - 0 - TANK FIRE SUPPRESSION MAINTENANCE GUIDE UTILITY CABINET LABEL SHEET.	1	0
		0 - 0 - 12-F28021-32144-OT-360 DUCT FIRE THERMOSTAT WITH 12 FOOT WIRE LEADS. NO. CLOSE ON TEMP RISE AT 360°F. (A0034310).	1	0
		0 - 0 - 32-00002 QUIK SEAL - 1/2" (UL).	1	0
		0 - 0 - 4429K153 1/2" MALE NPT TO 1/2" FEMALE NPT ELBOW, BRASS.	2	0
		0 - 0 - 4429K422 1/2" X 1/4" BRASS REDUCING BUSHING.	1	0
		0 - 0 - 79525 1/2" 90 PRO-PRESS ELBOW WITH 1/2" NPT FEMALE CONNECTION, VIEGA.	1	0
		0 - 0 - 79580 1/2" X 1/2" PRO-PRESS TEE X 1/2" NPT FEMALE CONNECTION, VIEGA.	2	0
		0 - 0 - 87-120042-001 SECONDARY ACTUATOR VALVE (SVA) - SINGLE ACTUATOR, REQUIRES PRIMARY RELEASE ACTUATOR, TANK FIRE SUPPRESSION.	1	0
		0 - 0 - 87-120045-001 HOSE, SECONDARY ACTUATOR HOSE, 7.5" BRAIDED STAINLESS STEEL, TANK FIRE SUPPRESSION.	1	0
		0 - 0 - 87-300001-001 TANK - PRESSURIZED TANK USED FOR TANK FIRE SUPPRESSION.	2	0
		0 - 0 - 87-300030-001 PRIMARY ACTUATOR KIT (PAK) - ACTUATOR AND RELEASE SOLENOID ASSEMBLY, ONE NEEDED PER FIRE SYSTEM, SUPERVISED, TANK FIRE SUPPRESSION.	1	0
		0 - 0 - 87-300033-001 DIN CONNECTOR, CANFIELD PART #5J560-201-EU0A, TANK FIRE SUPPRESSION, SUBMINIATURE SOLENOID CONNECTION (CED VENDOR 30377).	1	0
		0 - 0 - 87-300152-001 HARDWARE, SVA BOLTS, TANK FIRE SUPPRESSION.	8	0
		0 - 0 - 9055455PC PRO PRESS 1/2 PRESS X PRESS 90 ELBOW LD.	6	0
		0 - 0 - 9097200PC PRO PRESS PC611 1/2 PRESS TEE LD.	7	0
		0 - 0 - 98694A115 HARDWARE, DATANKLOCK LOCKING BRACKET SQUARE NUTS 5/16" ZINC, TANK FIRE SUPPRESSION.	4	0
		0 - 0 - A0034332 JUNCTION BOX FOR MANUAL PULL STATION. 1.5" DEEP BACK BOX, RED COLOR.	1	0
		0 - 0 - A31484 1/4" NPT SCHRADER VALVE AND CAP, JB INDUSTRIES. 1/4" FLARE X 1/4" MPT HALF UNION. USED ON TANK SERVICE PORT.	1	0
		0 - 0 - B1145 3/8" BLACK IRON 90 ELL.	3	0
		0 - 0 - DATANKLOCK DISCHARGE ADAPTER TANK LOCKING PLATE FOR FIRE SYSTEM TANK INSTALLATION IN UTILITY CABINETS, TANK FIRE SUPPRESSION.	2	0
		0 - 0 - TANK STRAP TANK STRAP - USED FOR TANK FIRE SUPPRESSION.	6	0
		0 - 0 - TFS-UCTANKBRACKET TANK BRACKET FOR FIRE SYSTEM TANK INSTALLATION IN UTILITY CABINETS, TANK FIRE SUPPRESSION.	2	0
		0 - 0 - WK-283952-000 DISCHARGE ADAPTER, TANK FIRE SUPPRESSION.	2	0
		16 - 16 - 79210 1/2" X 3/8" NPT MALE ADAPTER, VIEGA.	8	0
		16 - 16 - OL-F NOZZLE - TANK PROTECTION APPLIANCE COVERAGE NOZZLE (INCLUDES METAL BLOW OFF CAP, LANYARD, USED WITH CHROME-PLATED PIPE).	8	0
		26 - 26 - QSA-3/8 QUIK SEAL - 3/8" (UL).	8	0
		34 - 34 - A0034331 24VDC SINGLE ACTION MANUAL ACTUATION DEVICE (PUSH/PULL STATION) WITH PROTECTIVE COVER, ONE (1) NORMALLY OPEN CONTACT. RED COLOR.	1	0

NOTES

- FIELD PIPE DROPS AS SHOWN PIPING, ELBOWS, TEES, AND NOZZLES SUPPLIED BY CAS.
- FIELD INSTALLED DROP: FACTORY WILL PROVIDE QTY 2 60IN LONG PIECES OF CHROME PLATED PIPING SHIPPED LOOSE TO BE FIELD-INSTALLED.
- SHIP LOOSE DROP: FACTORY WILL PROVIDE THE EXACT CHROME PIPE LENGTH NEEDED SHIPPED LOOSE TO BE FIELD-INSTALLED.
- RELOCATE NOZZLES IF FLOW PATTERN IS BLOCKED BY SHELIVING, SALAMANDERS, ETC.
- OVERLAPPING COVERAGE SHALL NOT BE USED ON ANY APPLIANCE WITH AN OBSTRUCTION.
- IF APPLICABLE, EXTENDED PRE-PIPED DROPS ARE SHIPPED LOOSE.
- FACTORY PIPING EXTENDS A MAXIMUM OF 6" ABOVE THE TOP OF THE HOOD.

- APPLIANCE DIMENSIONS LISTED REPRESENT THE COOKING SURFACE SIZE, NOT THE OVERALL APPLIANCE SIZE.

- THIS PRE-ENGINEERED FIRE SYSTEM COMPLIES WITH U.L. 300 REQUIREMENTS.

- OL-F NOZZLE PART NUMBER REPLACES 3070-3/8H-10-SS

JOB #: 7564802.
JOB NAME: CAVA - DELRAY BEACH, FL_R1.

SYSTEM SIZE: TANK-SP-2 DESIGN FP: 37. MAXIMUM FP: 40.
HOOD # 1 11' 7.00" LONG x 60" WIDE x 30" HIGH.
RISER # 1 SIZE: 16" DIA.
HOOD # 1 METAL BLOW-OFF CAPS INCLUDED.

- HEAVY-DUTY APPLIANCES (RATED 600°F) WILL REQUIRE AN ADDITIONAL DOWNSTREAM FIRESTAT IN THE EVENT THAT THE DUCTWORK CONTAINS ANY HORIZONTAL RUNS OVER 25 FT IN LENGTH.
- MEDIUM TO LIGHT-DUTY APPLIANCES (RATED 450°F) WILL NOT REQUIRE ANY ADDITIONAL DOWNSTREAM DETECTION.

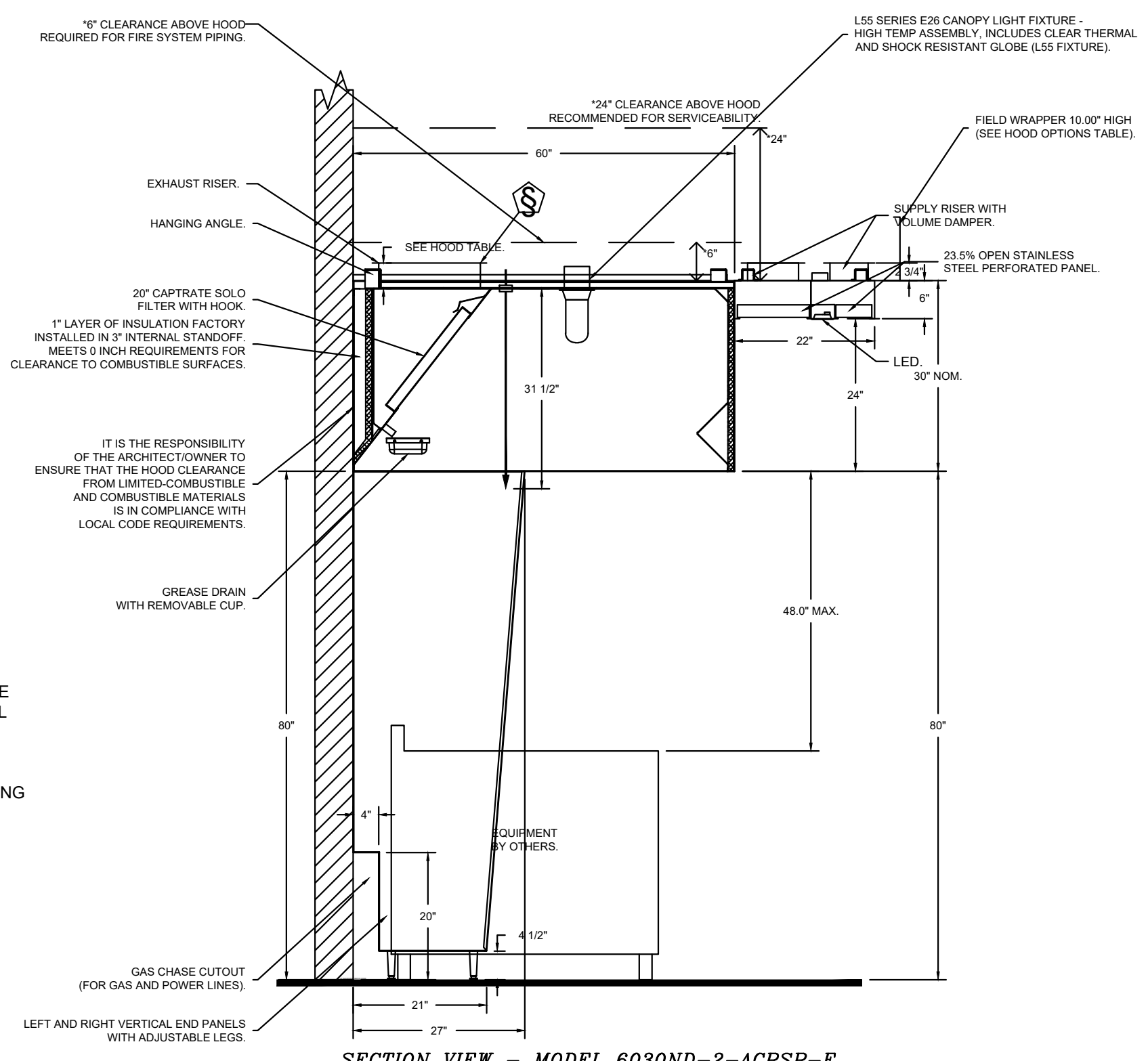
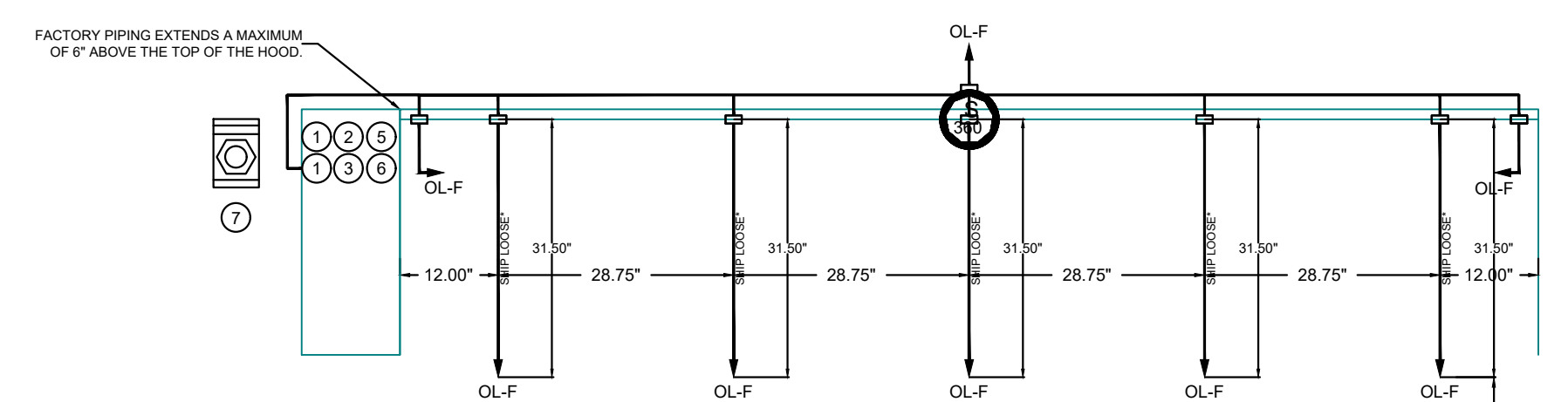
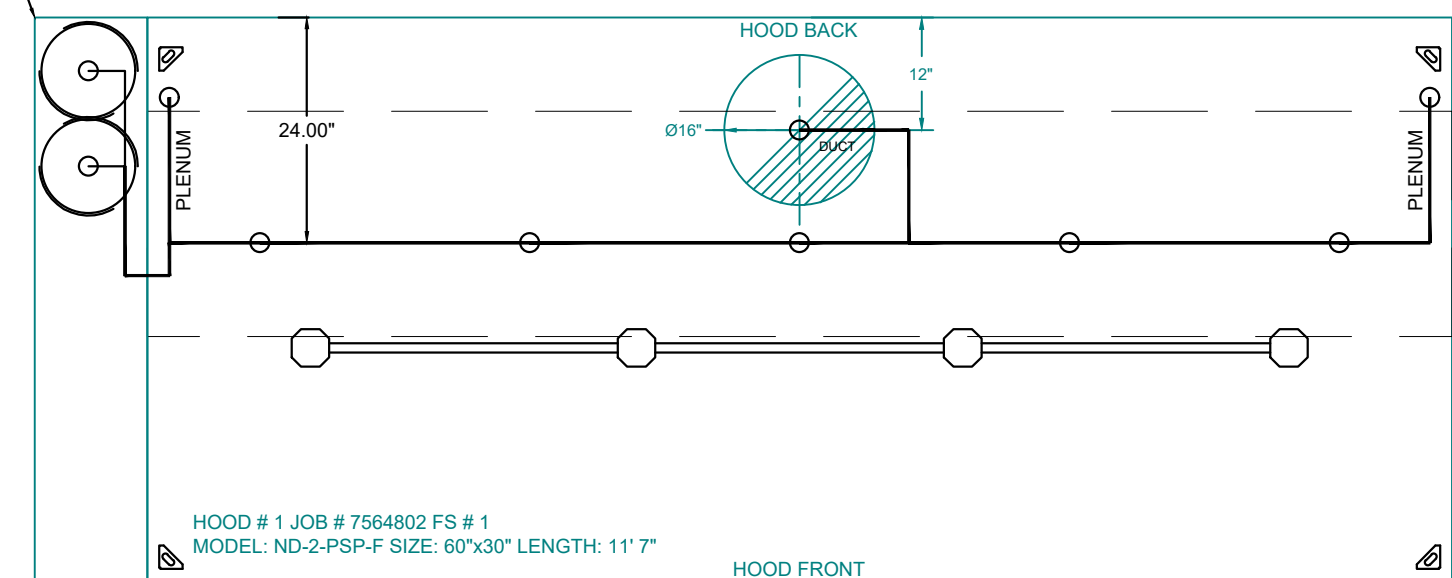
AGENT DISTRIBUTION PIPING LIMITATIONS	
PIPE SECTION	MAX PIPE LENGTH (FT)
MAX SUPPLY LINE TO FIRST OVERLAPPING NOZZLE	42
OVERLAPPING NOZZLE APPLIANCE BRANCH	10
DEDICATED NOZZLE APPLIANCE BRANCH	10

LEGEND - FIRE CABINET TANK SYSTEM

- 4 GALLON TANK.
- PRIMARY ACTUATOR RELEASE.
- SECONDARY ACTUATOR RELEASE.
- PRESSURE SUPERVISION SWITCH.
- PRIMARY HOSE ASSEMBLY.
- SECONDARY HOSE ASSEMBLY.
- REMOTE MANUAL ACTUATION DEVICE.

INCLUDES: FIELD INSTALLATION AND HOOKUP DURING NORMAL BUSINESS HOURS BY CERTIFIED INSTALLERS ONLY IN THE LOCATION NOTED ABOVE. TWO SITE VISITS ONLY (ONE VISIT TO SET PULL STATION & SYSTEM HOOKUP AND ONE VISIT FOR ONE TEST. ADDITIONAL VISITS WILL RESULT IN ADDITIONAL CHARGES), ONE MECHANICAL OR ELECTRICAL GAS VALVE PER SYSTEM AT A MAXIMUM SIZE OF 2", PERMIT, AND SYSTEM TEST.
EXCLUDES: UNION LABOR & PREVAILING WAGE (LABOR & WAGES WILL BE ADDED IF APPLICABLE), GAS VALVE INSTALLATION, ELECTRICAL HOOKUP AND CONNECTIONS, HANGING OF FIRE CABINET, SHUNT TRIP, HANDHELD EXTINGUISHER(S), ON-SITE RE-PIPING DUE TO EQUIPMENT LAYOUT CHANGES.

SYSTEM REQUIRES A MINIMUM OF 7 FT OF EQUIVALENT PIPE LENGTH BETWEEN TANK AND NEAREST APPLIANCE NOZZLE FOR MOST APPLIANCES. EACH 90 DEGREE ELBOW ADDS 1.3 FT OF EQUIVALENT LENGTH. SEE MANUAL FOR DETAILS.



SECTION VIEW - MODEL 6030ND-2-ACPSP-F HOOD - #1

REVISIONS

DESCRIPTION	DATE

CAPTIVEAIR
Maryland Mechanical
5523 Research Park Drive, Suite 250, Catonsville, MD, 21228 PHONE: (800) 988 - 0881 FAX: 9192276931 EMAIL: reg76@captivair.com

Cava - Delray Beach, FL_R1
1831 South Federal Highway,
Delray Beach, FL, 33483

DATE: 6/4/2025
DWG.#: 7564802
DRAWN BY: ABS-76
SCALE: NTS
MASTER DRAWING

PROJECT NUMBER: CAV148

ISSUE	DATE
PERMIT SET	1.17.2025
REVISION 1	3.14.2025
REVISION 2	1.10.2025
CONSTRUCTION SET	7.18.2025

SHEET NO. 3

annex
ENGINEERING GROUP
589 w nationwide blvd ste b
columbus, ohio 43215
tel: 614.481.2292
fax: 614.487.8777

ALL DRAWINGS AND SPECIFICATIONS SHALL REMAIN THE PROPERTY OF ANNEX ENGINEERING GROUP AND MAY NOT BE USED, DUPLICATED OR ALTERED WITHOUT THE WRITTEN CONSENT OF THE ENGINEER.

HOOD DRAWINGS FOR REFERENCE ONLY

CAVA #148 - E DELRAY BEACH, FL
1831 S. FEDERAL HWY. SUITE 300
DELRAY BEACH, FL 33483
FOR CAVA
14 Ridge Square NW #500, WASHINGTON, DC 20016

HOOD DRAWINGS FOR REFERENCE ONLY

SHEET: H1.3

EXHAUST FAN INFORMATION - JOB#7564802

FAN UNIT NO	TAG	QTY	FAN UNIT MODEL #	MANUFACTURER	CFM	ESP	RPM	MOTOR ENCL	HP	BHP	PHASE	VOLT	FLA	DISCHARGE VELOCITY	WEIGHT (LBS)	SONES
1	KEF	1	DU85HFA	CAPTIVEAIRE	2317	1.000	1551	TEAO-ECM	1.000	0.6650	1	115	11.6	733 FPM	94	16.7

DOAS/RTU FAN SCHEDULE - JOB#7564802

FAN UNIT NO	TAG	QTY	DOAS/RTU MODEL #	MANUFACTURER	ELECTRICAL INFORMATION										COOLING INFORMATION						HEAT PUMP INFORMATION				A2L MINIMUM ROOM VOLUME			NOTES						
					BLOWER	RETURN AIR CFM	MAX OUTSIDE AIR CFM	TOTAL CFM	WEIGHT (LBS)	ESP	HP	PHASE	VOLT	MCA	MOCOP	OUTSIDE AIR DB	OUTSIDE AIR WB	MIXED AIR DB	MIXED AIR WB	LEAVING AIR DB	LEAVING AIR WB	DP	CAPACITY TOTAL	CAPACITY SENS.	IEER	ISMRE2	ENTERING TEMP		MAX TEMP RISE	DISCHARGE TEMP	COP	ROOM AREA (FT2)	AIRFLOW (CFM)	HEIGHT (FT)
2	MAU	1	EARTU1-15-ST-MPU	ECON-AIR	15P-1	0	1691	1691	1114	0.750	1.50	3	208	25.7A	30A	87.5°F	80.5°F	87.5°F	80.5°F	73.7°F	71.4°F	70.5°F	64.0 MBH	25.0 MBH	17.9	6.4	51.0°F	26.0°F	77.0°F	3.5	198.2	357	7.2	1,2,3,4,5,6,7,8,9,10,11,12,13,14,15,16,17,18

NOTES:

- INVERTER SCROLL COMPRESSOR WITH INTEGRATED OIL SENSOR. DIGITAL OR STAGED SCROLL NOT AN APPROVED EQUAL
- DIRECT DRIVE PLENUM BLOWER. BELT DRIVEN BLOWERS ARE NOT ACCEPTABLE
- INTEGRATED MONITORING VIA CELLULAR CONNECTION BY MANUFACTURER
- REFRIGERATION PRESSURE MONITORING ON HIGH AND LOW PRESSURE SIDE OF SYSTEM INCLUDED THROUGH DIGITAL INTERFACE
- EC MOTOR CONDENSING FANS
- ELECTRONIC EXPANSION VALVE. TXV NOT ACCEPTABLE
- SUCTION LINE ACCUMULATOR
- FACTORY COMMISSIONING WITH 5 YEAR PARTS WARRANTY
- AVERAGING INTAKE, EVAP AND DISCHARGE TEMPERATURE SENSORS (DISCHARGE SENSOR TO BE FACTORY MOUNTED WITHIN UNIT)
- SUPPLY CFM MONITORING INTEGRAL TO UNIT WITH CFM MEASUREMENT INCLUDED THROUGH DIGITAL INTERFACE
- 15 DEGREE LOW AMBIENT OPERATION
- MIAMI DADE RATED
- E-COATED CONDENSING COIL
- E-COATED EVAPORATIVE COIL
- E-COATED REHEAT COIL
- 1" EXTERIOR DUAL-WALL CONSTRUCTION W/ R-4.3 INSULATION-MINIMUM 24GA EXTERIOR W/ 18GA BASE
- DOWN DISCHARGE/NO RETURN
- MINIMUM ROOM AREA ASSUMED 7.2' SUPPLY DIFFUSER HEIGHT AND IS CALCULATED PER UL60335-2-40 4TH ED. VALUES BASED ON FACTORY CHARGE. ACTUAL SITE CHARGE MAY DIFFER.

FAN ACCESSORIES

FAN UNIT NO	TAG	EXHAUST				SUPPLY			
		GREASE CUP	GRAVITY DAMPER	WALL MOUNT	SIDE DISCHARGE	GRAVITY DAMPER	MOTORIZED DAMPER	WALL MOUNT	
1	KEF	YES							

CURB ASSEMBLIES

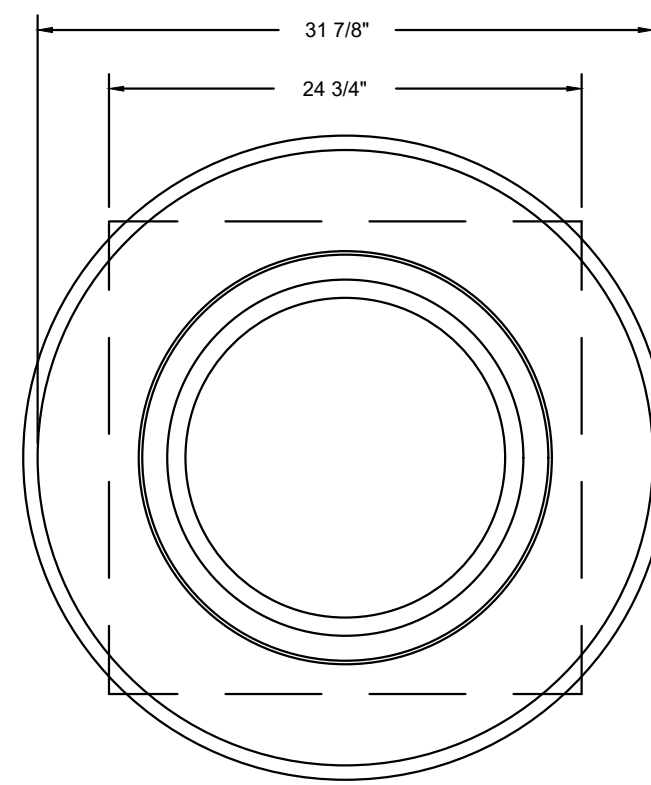
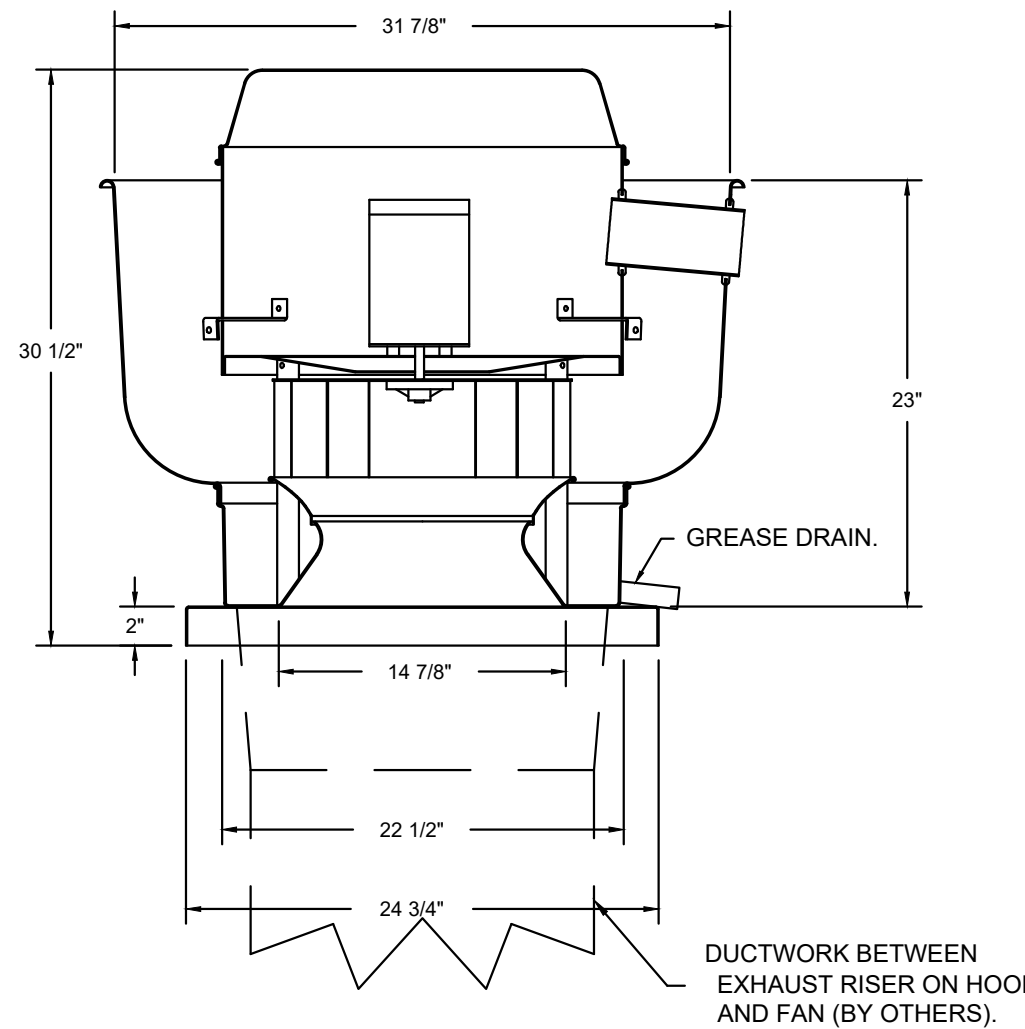
NO	ON FAN	TAG	WEIGHT	ITEM	SIZE
1	#1	KEF	66 LBS	CURB	23.000"W X 23.000"L X 26.000"H VENTED 16 GAUGE.
2	#2	MAU	103 LBS	CURB	41.000"W X 71.000"L X 20.000"H INSULATED.

FAN OPTIONS

FAN UNIT NO	TAG	QTY	DESCRIPTION	IMPORTANT NOTE
1	KEF	1	GREASE BOX	THIS UNIT IS CONFIGURED WITH A HEAT PUMP WHICH MAY BE AT RISK OF FREEZING THE OUTDOOR COIL AT TIMES WHEN OUTDOOR TEMPS REACH APPROXIMATELY 45F OR LOWER AND OUTDOOR HUMIDITY LEVELS ARE HIGH. DURING THESE CONDITIONS, THE UNIT HAS POTENTIAL TO RUN A DEFROST CYCLE WHICH WILL DELIVER VERY COLD AIR INTO THE SPACE UNTIL THE DEFROST CYCLE COMPLETES, AND MAY REPEAT THIS PROCESS UNTIL WEATHER CONDITIONS PASS. IT IS HIGHLY RECOMMENDED THAT BACKUP HEAT BE ADDED TO AVOID RISK OF COLD AIR DELIVERY TO THE SPACE.
		1	MIAMI DADE CERTIFICATION - NOA-1 ALUMINUM UPBLAST	
1	ECM WIRING PACKAGE - PWM SIGNAL FROM ECPM03 PREWIRE (TELCO MOTOR), CCW ROTATION			
1	2 YEAR PARTS WARRANTY			
2	MAU	1	CASLINK BUILDING MONITORING SYSTEM - INTERNET OR CELLULAR CONNECTION REQUIRED	
		1	2" MERV 13 FILTERS FOR RTU1 (QTY. 4)	
		1	2" MERV 8 FILTERS FOR RTU1 (QTY. 4)	
		1	TOTAL CFM MONITORING	
		1	RTU1 DOWN DISCHARGE	
		1	RTU1 FIXED 100% OA INTAKE CONTROL	
		1	FREEZESTAT	
		1	INTAKE FIRESTAT SET TO 135°F	
		1	RTU1 NO RETURN - 100% OA - MPU	
		1	RTU1 CURB DUCT HANGER	
		1	RTU1 MIAMI DADE CERTIFICATION	
		1	RTU1 BLOWER DOOR SWITCH	
		1	2" METAL MESH FILTERS FOR RTU1 OUTDOOR INTAKE	
		1	VAV PACKAGE W/ 0-10VDC INPUT CONTROL (571 VFD INCLUDED)	
		1	LOW AMBIENT COOLING OPERATION - DOWN TO 0F AMBIENT	
		1	R454B LEAK DETECTOR OPTION FOR RTUS	
		1	ECOATING FOR RTU1 3/4"5T CONDENSER COIL	
		1	ECOATING FOR RTU1 3/4"5T EVAP COIL	
1	ECOATING FOR RTU1 3/4"5T REHEAT COIL			
1	SIZE 1 MOISTURE ELIMINATOR FOR SIZE 1, 5 TON RTU. NO REHEAT			
1	5 TON MODULATING COOLING OPTION WITH HEAT PUMP, 208/230V, R454B REFRIGERANT, VARIABLE SPEED COMPRESSOR, ECM CONDENSING FAN			
1	VFD FACTORY MOUNTED AND WIRED IN RTU COMMERCIAL CONTROL VESTIBULE			
1	SINGLE POINT ELECTRICAL CONNECTION FOR RTU: 750VA TRANSFORMER USED. IF A NON-DCV PREWIRE CONTROLS THIS UNIT, THE #28, #47, "MA" OR "E2" PREWIRE OPTION MUST BE SELECTED. DOES NOT PROVIDE SUPPLY STARTER IN PREWIRE			
1	5 YEAR ENTIRE UNIT PARTS WARRANTY, 10 YEAR ENTIRE UNIT PARTS WARRANTY WITH REMOTE MONITORING AND CAPTIVEAIRE SERVICE CONTRACT			

HMI SCHEDULE				
UNIT NUMBER	HMI #	HMI LOCATION	TEMP AVERAGING	MODBUS ADDRESS
FAN #2	HMI #1 - UNIT	IN UNIT	NOT AVERAGED	55

FAN #1 DU85HFA - EXHAUST FAN (KEF)



TOP VIEW

FEATURES:

- DIRECT DRIVE CONSTRUCTION (NO BELTS/PULLEYS).
- ROOF MOUNTED FANS.
- RESTAURANT MODEL.
- UL705 AND UL762 AND ULC-S645
- VARIABLE SPEED CONTROL.
- INTERNAL WIRING.
- THERMAL OVERLOAD PROTECTION (SINGLE PHASE).
- HIGH HEAT OPERATION 300°F (149°C).
- GREASE CLASSIFICATION TESTING.
- NEMA 3R SAFETY DISCONNECT SWITCH.

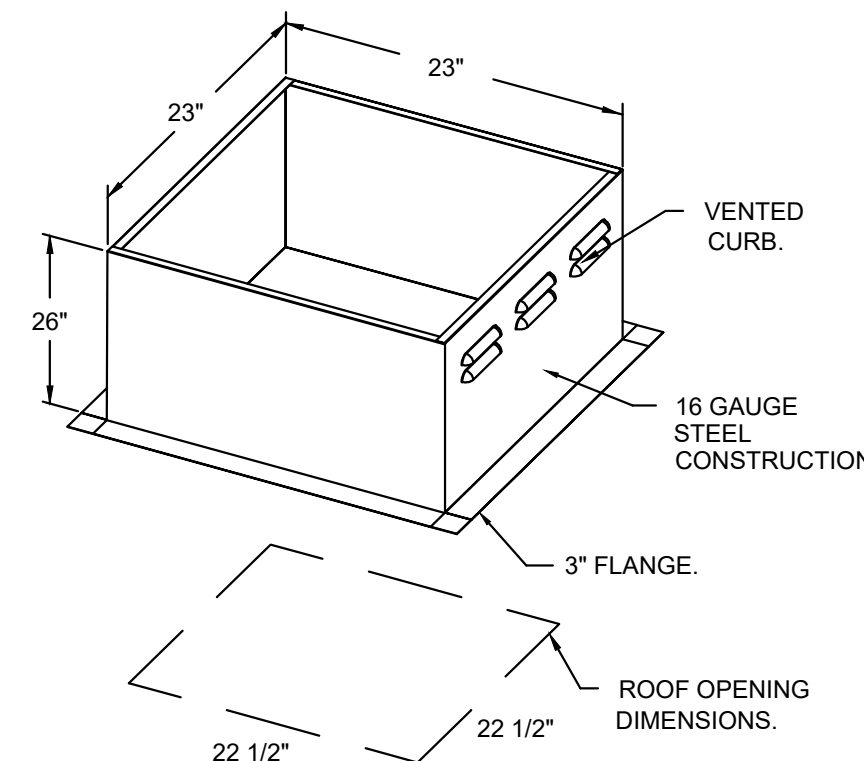
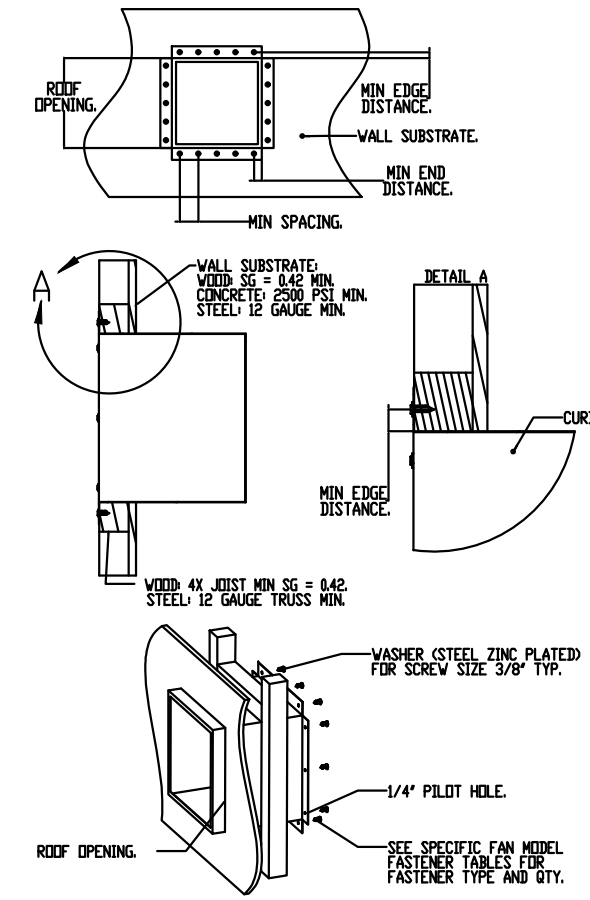
NORMAL TEMPERATURE TEST
EXHAUST FAN MUST OPERATE CONTINUOUSLY WHILE EXHAUSTING AIR AT 300°F (149°C) UNTIL ALL FAN PARTS HAVE REACHED THERMAL EQUILIBRIUM, AND WITHOUT ANY DETERIORATING EFFECTS TO THE FAN WHICH WOULD CAUSE UNSAFE OPERATION.

ABNORMAL FLARE-UP TEST
EXHAUST FAN MUST OPERATE CONTINUOUSLY WHILE EXHAUSTING BURNING GREASE VAPORS AT 600°F (316°C) FOR A PERIOD OF 15 MINUTES WITHOUT THE FAN BECOMING DAMAGED TO ANY EXTENT THAT COULD CAUSE AN UNSAFE CONDITION.

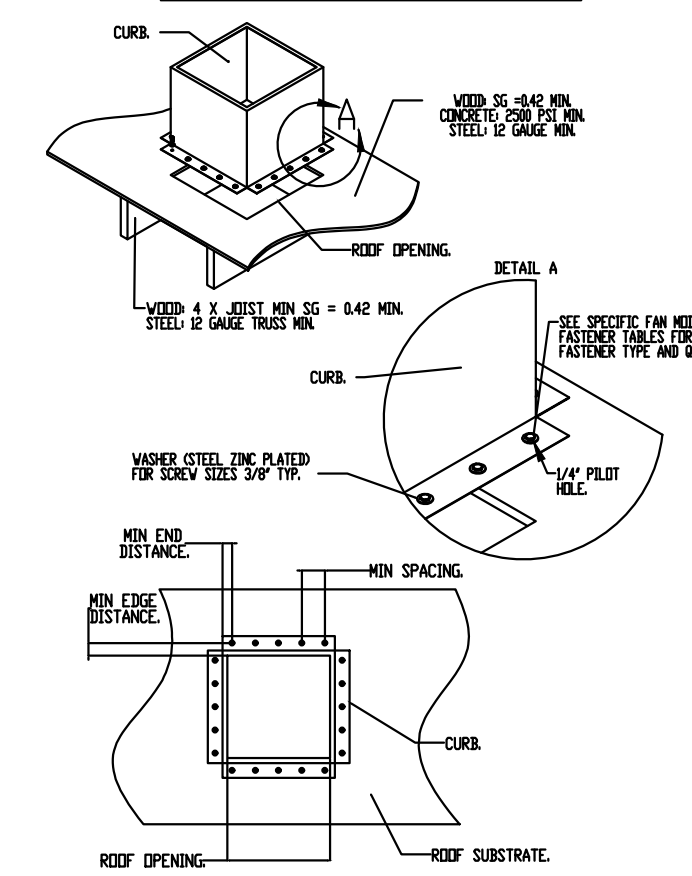
OPTIONS

- GREASE BOX.
- MIAMI DADE CERTIFICATION - NOA-1 ALUMINUM UPBLAST.
- ECM WIRING PACKAGE - PWM SIGNAL FROM ECPM03 PREWIRE (TELCO MOTOR), CCW ROTATION.
- 2 YEAR PARTS WARRANTY.

MIAMI-DADE COUNTY - WALL CURB INSTALLATION GUIDE



MIAMI-DADE COUNTY - CURB ROOF INSTALLATION GUIDE



REVISIONS

DESCRIPTION	DATE:

CAPTIVEAIRE

Maryland Mechanical
5523 Research Park Drive, Suite 250, Catonsville, MD, 21228
PHONE: (800) 988-0881 FAX: 9192275931 EMAIL: reg766@captiveaire.com

Cava - Delray Beach, FL_R1
1831 South Federal Highway,
Delray Beach, FL, 33483

PROJECT NUMBER:
CAV148

DATE: 6/4/2025

DWG.#:
7564802

DRAWN BY:
ABS-76

SCALE:
NTS

MASTER DRAWING

SHEET NO.
4



589 w nationwide blvd ste b
columbus, ohio 43215
tel: 614.481.2292
fax: 614.487.8777

ALL DRAWINGS AND SPECIFICATIONS SHALL REMAIN THE PROPERTY OF ANNEX ENGINEERING GROUP AND MAY NOT BE USED, DUPLICATED OR ALTERED WITHOUT THE WRITTEN CONSENT OF THE ENGINEER.

CAVA

CAVA #148 - E DELRAY BEACH, FL
1831 S. FEDERAL HWY. SUITE 300
DELRAY BEACH, FL 33483


FOR CAVA
14 Ridge Square NW #500, WASHINGTON, DC 20016

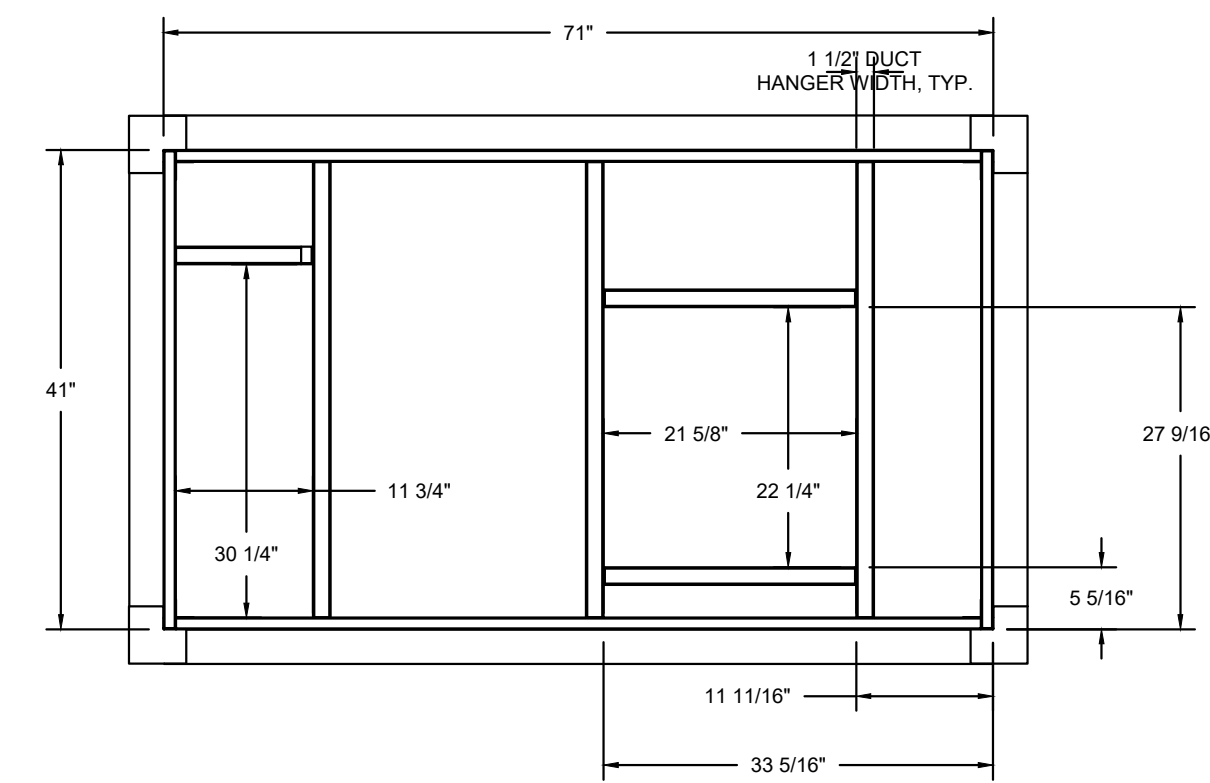
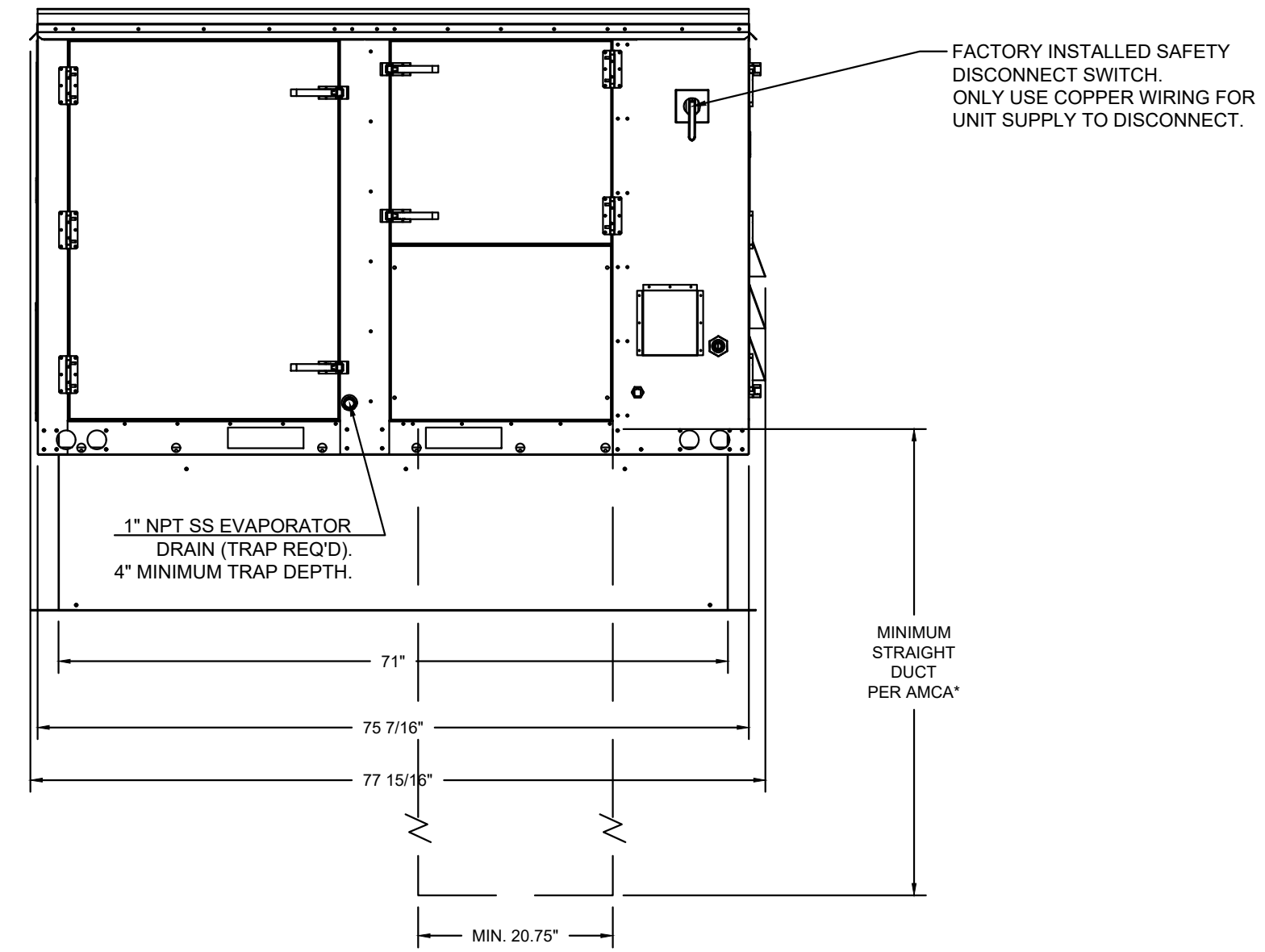
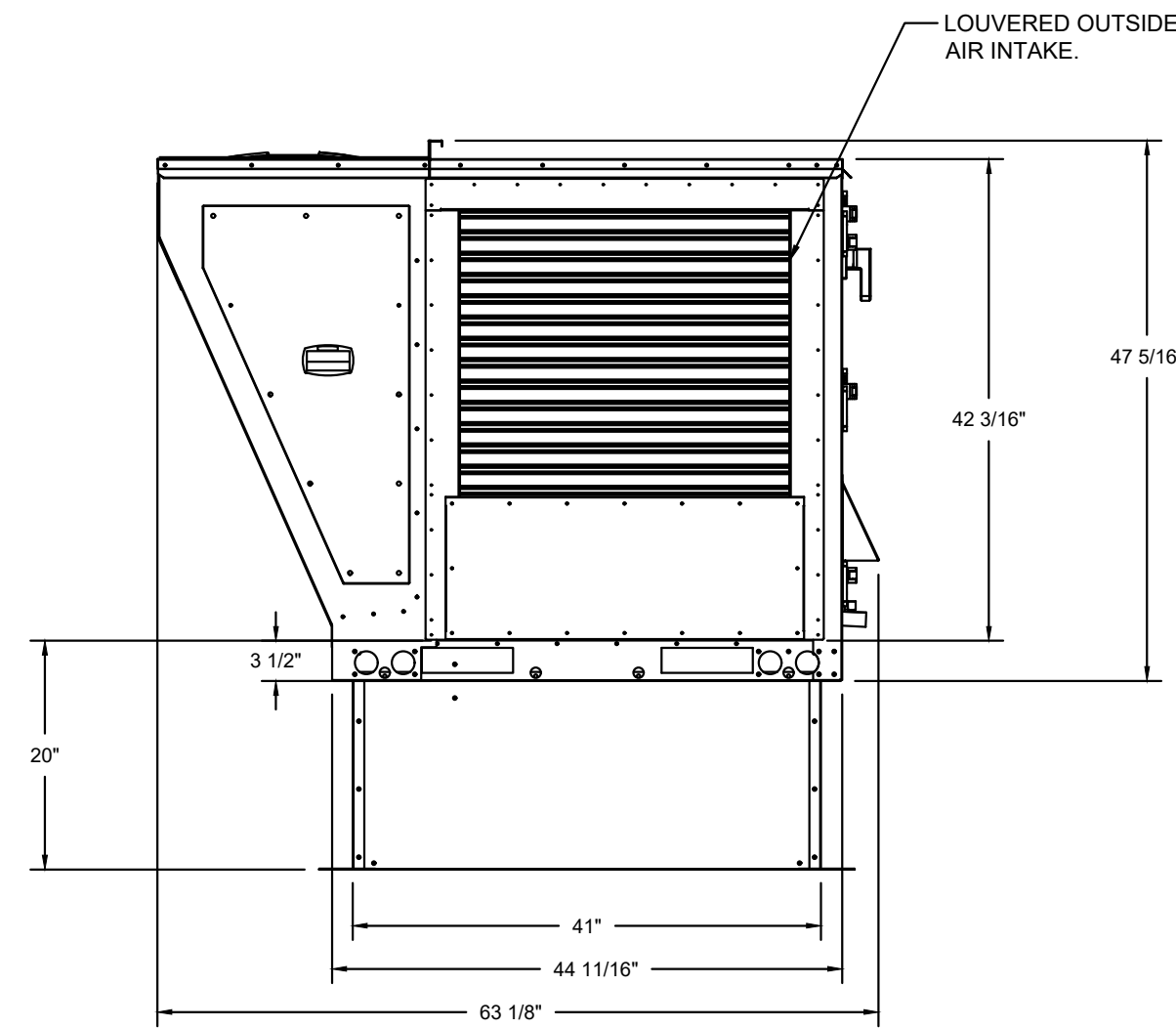
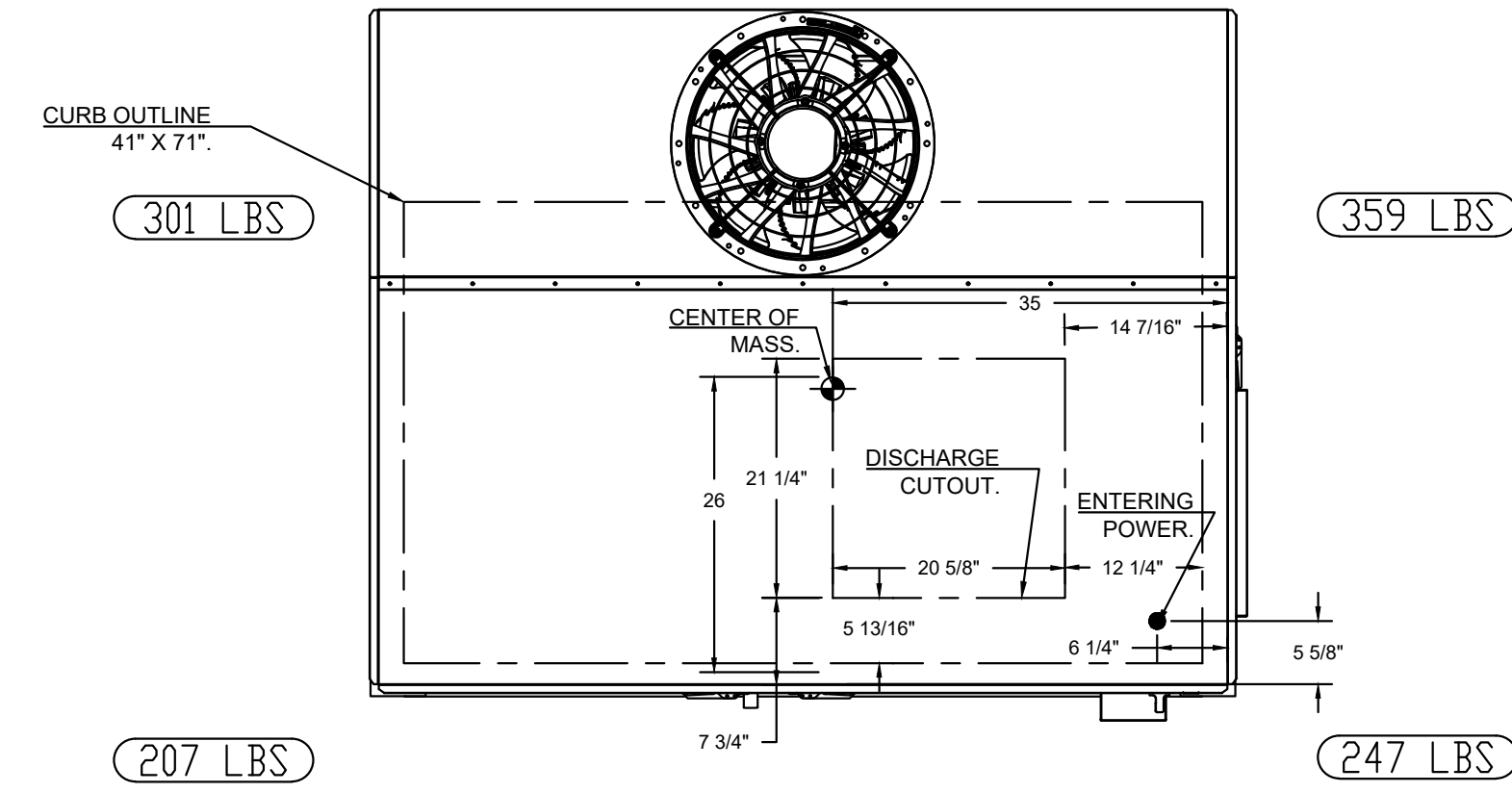
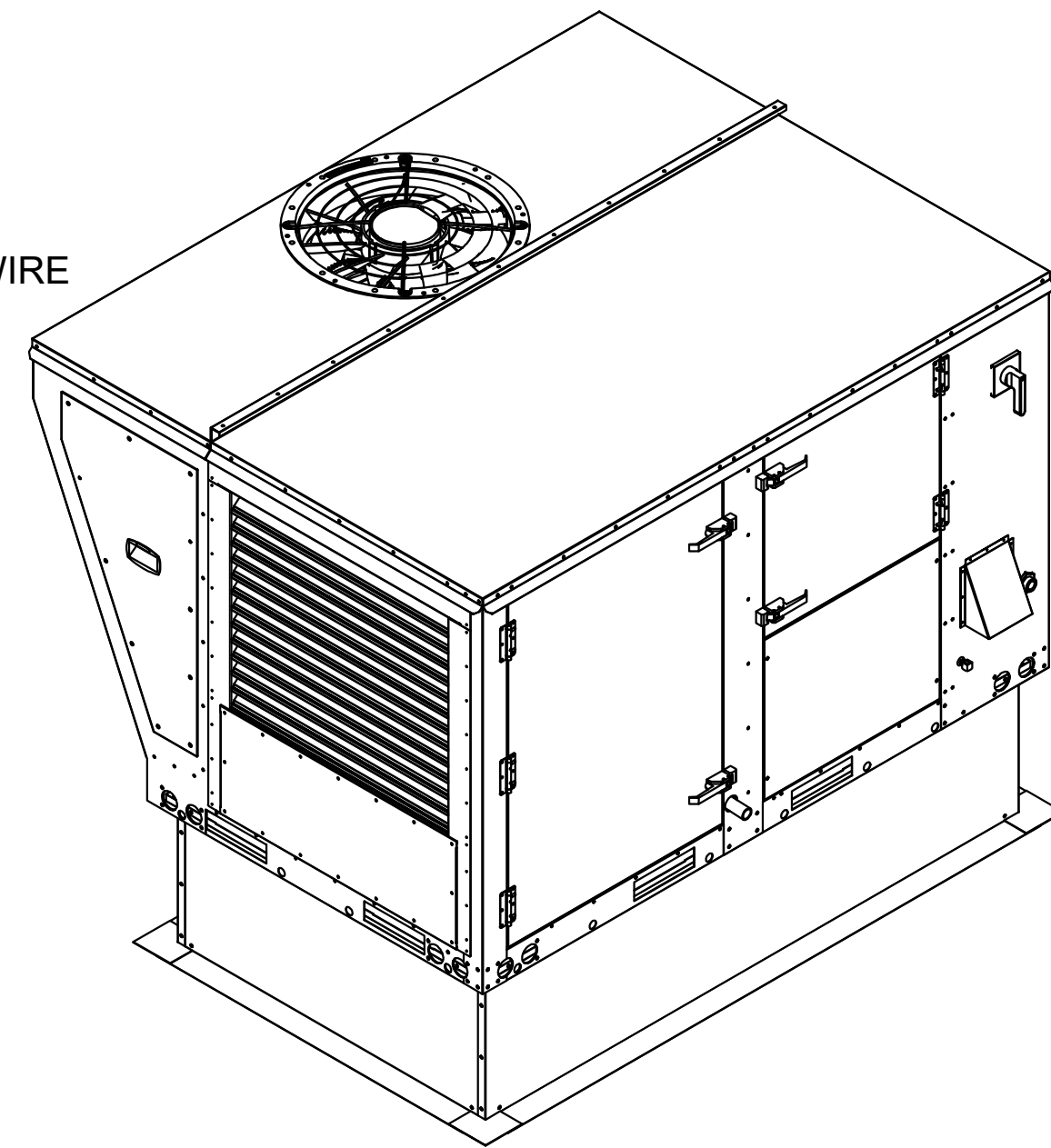
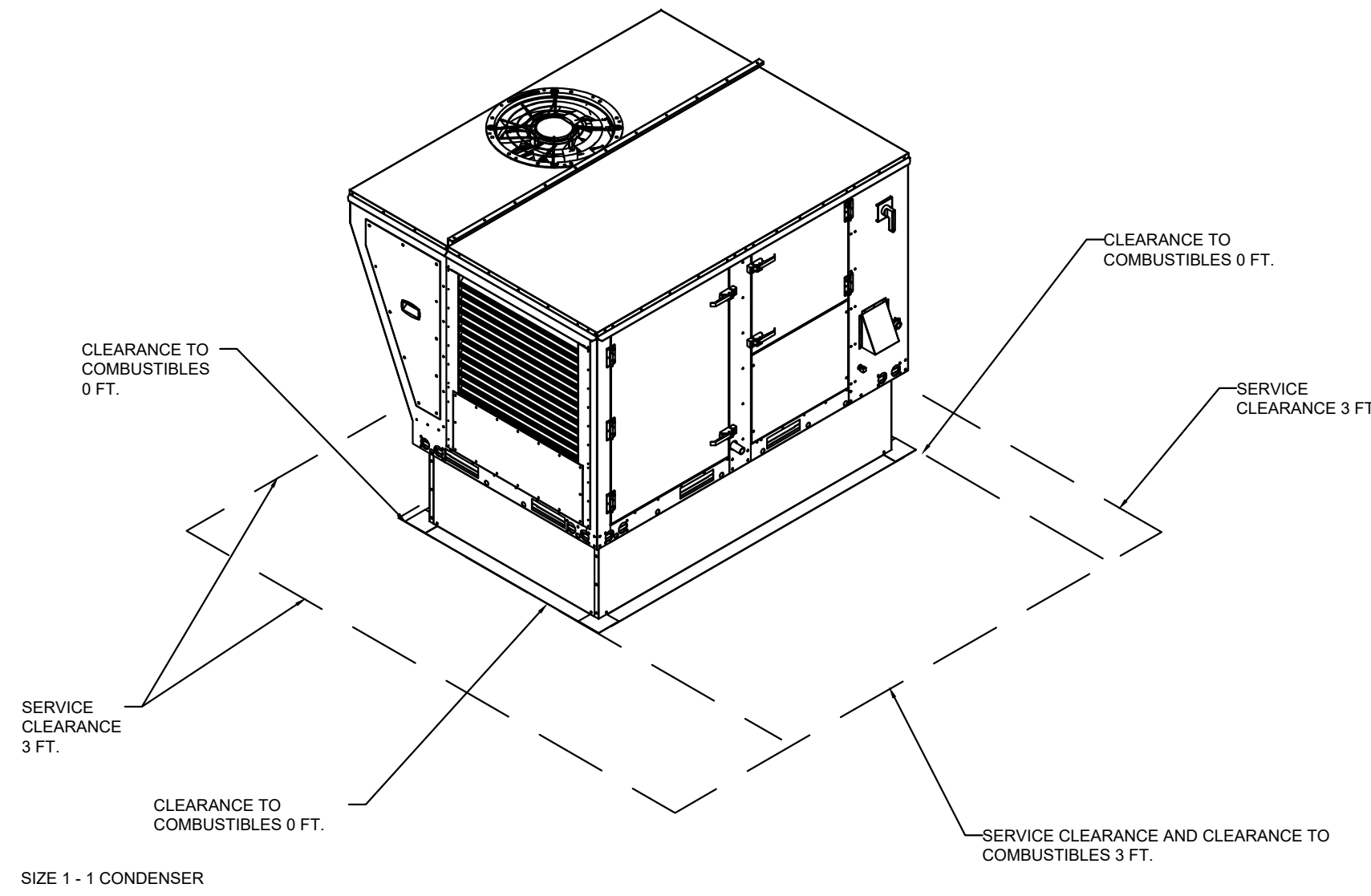
HOOD DRAWINGS FOR REFERENCE ONLY

SHEET: H1.4

FAN #2 EARTU1-15-5T-MPU - SUPPLY FAN (MAU)

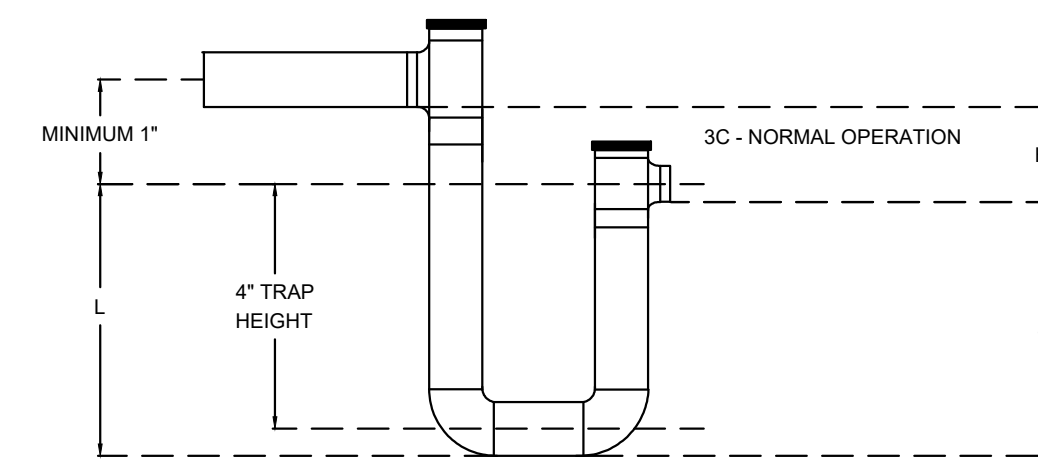
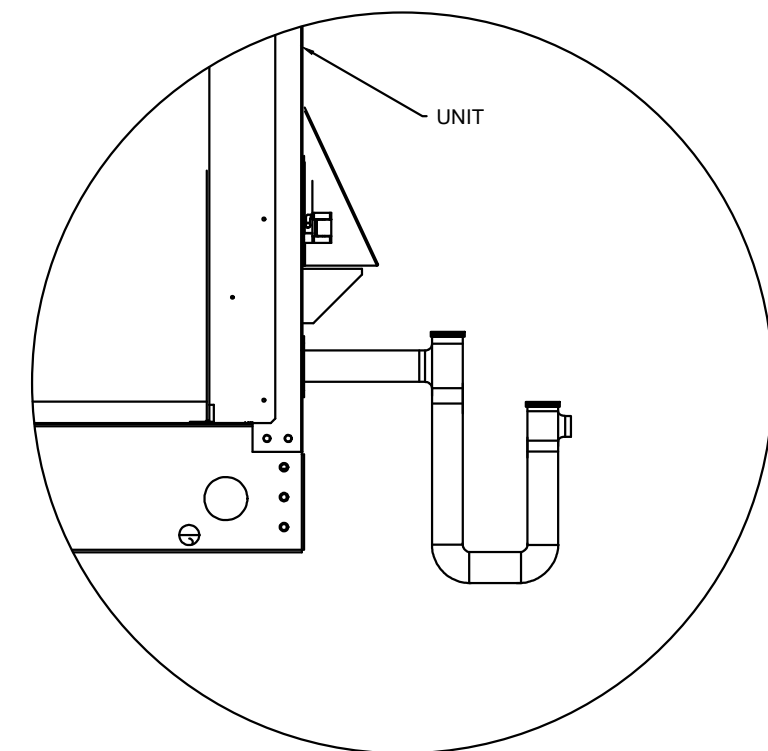
NOTES:

- DO NOT OBSTRUCT OUTSIDE AIR INLET, OUTSIDE AIR COIL OR OUTSIDE AIR FAN.
-  DENOTES CORNER WEIGHT.
- ROOF OPENING MUST BE 2" SMALLER THAN CURB DIMENSIONS IN BOTH DIRECTIONS.
- CONNECTION FROM BREAKER TO UNITS SAFETY DISCONNECT SWITCH TO BE COPPER WIRE ONLY.

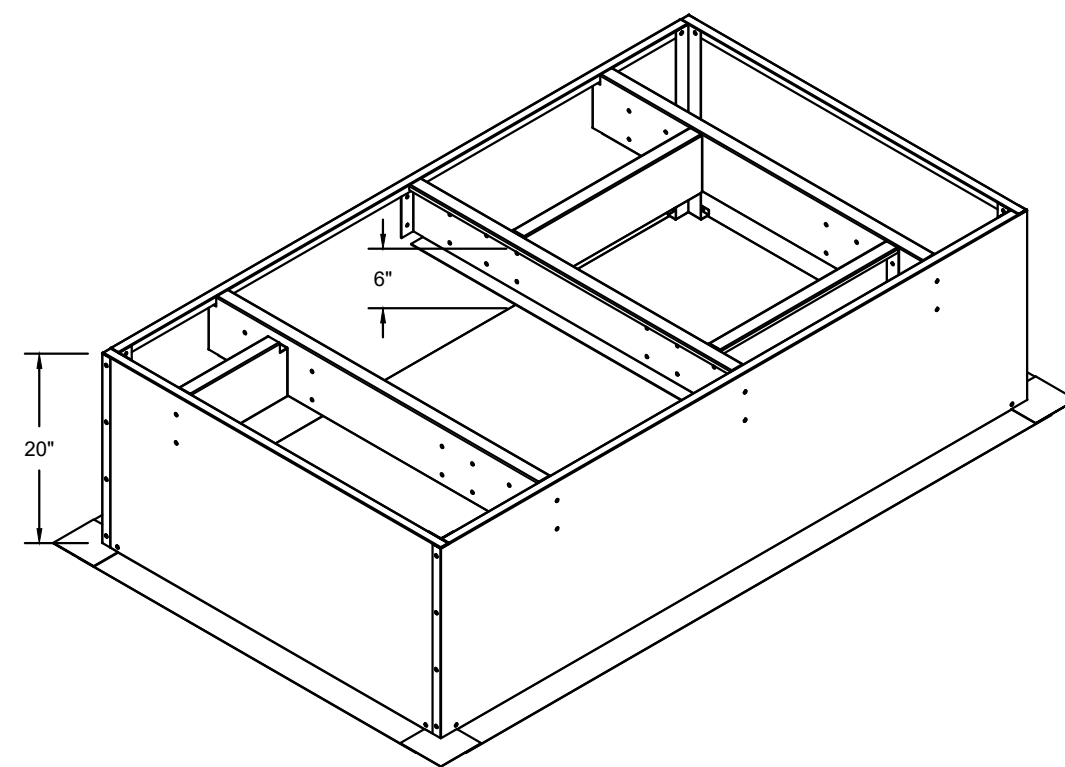


*NOTE: SUPPLY DUCT MUST BE INSTALLED TO MEET SMACNA STANDARDS. A MINIMUM STRAIGHT DUCT LENGTH MUST BE MAINTAINED DOWNSTREAM OF UNIT DISCHARGE AS OUTLINED IN AMCA PUBLICATION 201. WHEN USING RECTANGULAR DUCTWORK, ELBOWS MUST BE RADIUS THROAT, RADIUS BACK WITH TURNING VANES. FLEXIBLE DUCTWORK AND SQUARE THROAT/SQUARE BACK ELBOWS SHOULD NOT BE USED. ANY TRANSITION AND/OR TURNS IN THE DUCTWORK WILL CAUSE SYSTEM EFFECT. SYSTEM EFFECT WILL DRASTICALLY INCREASE STATIC PRESSURE AND REDUCE AIRFLOW. DO NOT RELY ON UNIT TO SUPPORT DUCT IN ANY WAY. FAILURE TO PROPERLY SIZE DUCTWORK MAY CAUSE SYSTEM EFFECTS AND REDUCE PERFORMANCE OF THE EQUIPMENT. SUGGESTED STRAIGHT DUCT SIZE IS 20.75" x 21.5".

RTU CONDENSATE DRAIN TRAP DETAIL



H = (1" FOR EACH 1" OF MAXIMUM NEGATIVE STATIC PRESSURE) + 1"
 J = HALF OF H
 L = H + J + PIPE DIAMETER + INSULATION



REVISIONS	
DESCRIPTION	DATE

CAPTIVE
 Maryland Mechanical
 5523 Research Park Drive, Suite 250, Caloreville, MD, 21228
 PHONE: (800) 988-0881 FAX: 9192275931 EMAIL: reg76@captiveinc.com

Cava - Delray Beach, FL_R1
 1831 South Federal Highway,
 Delray Beach, FL, 33483

DATE: 6/4/2025
 DWG.#: 7564802
 DRAWN BY: ABS-76
 SCALE: NTS
 MASTER DRAWING

SHEET NO. 5

HOOD DRAWINGS FOR REFERENCE ONLY



COPYRIGHT 2025.
 ALL DRAWINGS AND SPECIFICATIONS SHALL
 REMAIN THE PROPERTY OF ANNEX ENGINEERING
 GROUP AND MAY NOT BE USED, DUPLICATED OR
 ALTERED WITHOUT THE WRITTEN CONSENT OF
 THE ENGINEER.

CAVA

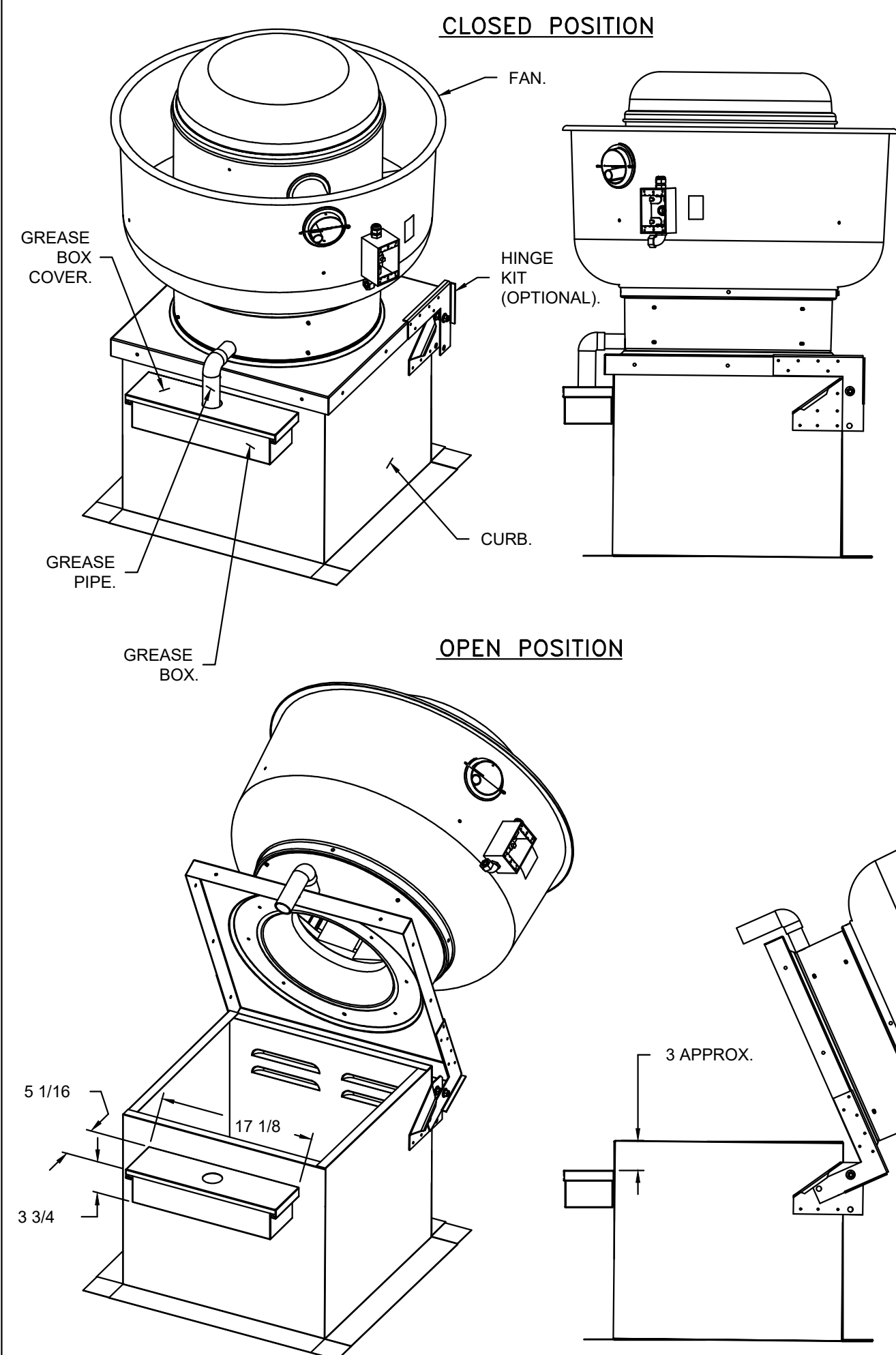
CAVA #148 - E DELRAY BEACH, FL
 1831 S. FEDERAL HWY. SUITE 300
 DELRAY BEACH, FL 33483
 FOR CAVA
 14 Ridge Square NW #500, WASHINGTON, DC 20016

ISSUE	DATE
PERMIT SET	1.17.2025
REVISION 1	3.14.2025
REVISION 2	1.10.2025
CONSTRUCTION SET	7.18.2025

HOOD DRAWINGS FOR REFERENCE ONLY

SHEET: **H1.5**

GREASE BOX INSTALLATION



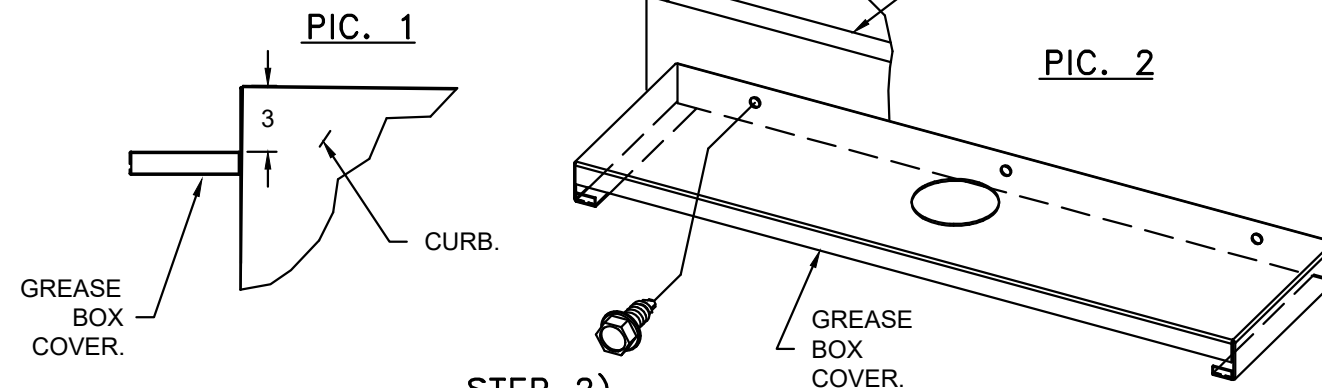
PARTS INCLUDED

- GREASE BOX.
- GREASE BOX COVER.
- GREASE PIPE.
- SHEET METAL SCREWS
- 3 - LONG (3/4" LG.)

GREASE BOX FIELD INSTALLATION

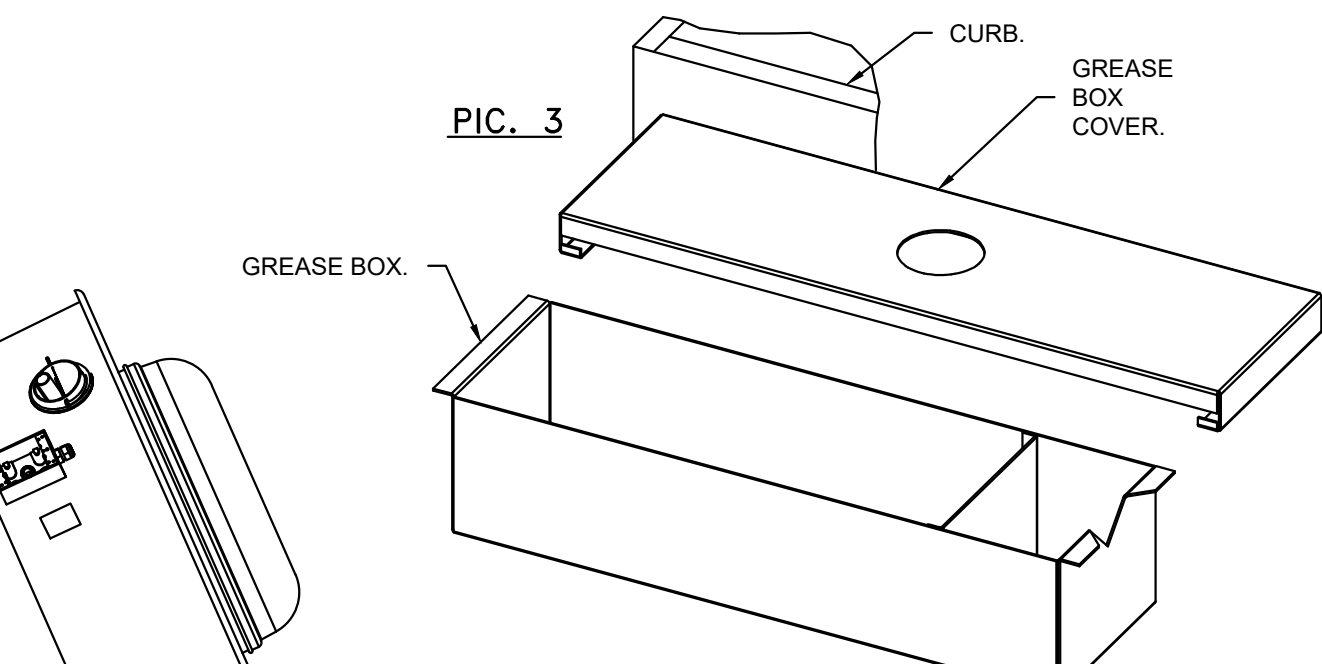
STEP 1)

ATTACH GREASE BOX COVER TO THE CURB, HOLD 3" DIMENSION AS SHOWN ON PIC. 1. SCREW GREASE BOX COVER TO CURB USING (3) LONG (3/4" LG.) SCREWS AS SHOWN ON PIC. 2.



STEP 2)

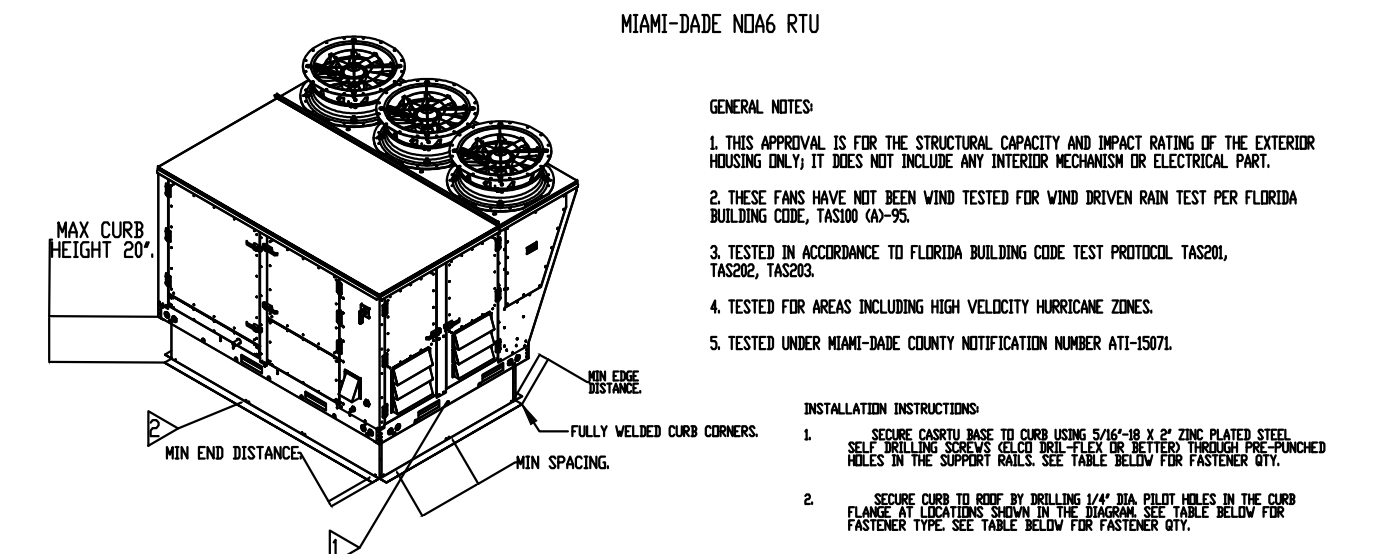
ATTACH GREASE BOX TO GREASE BOX COVER, SLIDE AND DROP. AS SHOWN ON PIC. 3.



STEP 3)

INSTALL GREASE PIPE AS SHOWN ON PIC. 4.

GREASEBOX
REV.#2 08/19/02



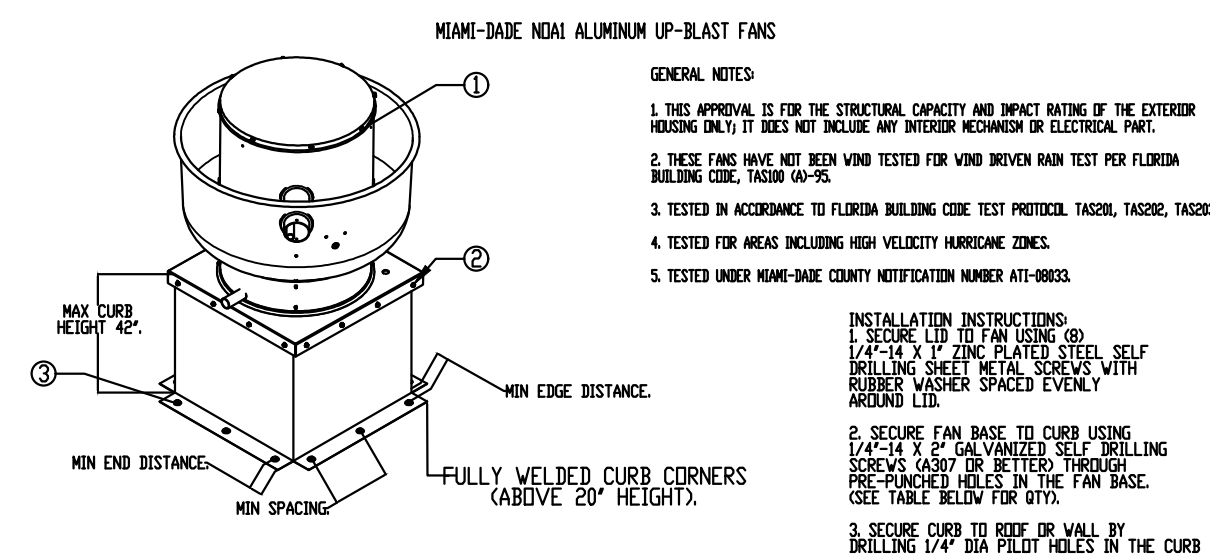
- MIAMI-DADE ND46 RTU**
- GENERAL NOTES:**
- THIS APPROVAL IS FOR THE STRUCTURAL CAPACITY AND IMPACT RATING OF THE EXTERIOR HOODING ONLY; IT DOES NOT INCLUDE ANY INTERIOR MECHANISM OR ELECTRICAL PART.
 - THESE FANS HAVE NOT BEEN WIND TESTED FOR WIND BLOWN RAIN TEST PER FLORIDA BUILDING CODE, SECTION 64-05.
 - TESTED IN ACCORDANCE TO FLORIDA BUILDING CODE TEST PROTOCOL, TAZSOL, TAZSOL, TAZSOL.
 - TESTED FOR AREAS INCLUDING HIGH VELOCITY HURRICANE ZONES.
 - TESTED UNDER MIAMI-DADE COUNTY NOTIFICATION NUMBER AIT-0501.

INSTALLATION FASTENER TYPES

FASTENER	WOOD (S&G = 0.42 MIN.)			STEEL (12 GAUGE MIN.)			CONCRETE (2000 PSI MIN. CRACKED CONCRETE)		
	5/16"-18 X 2" SELF DRILLING SCREW (ELO DRILL-FLEX OR BETTER)	3/8" DIA. ZINC PLATED LAG BOLT	1/4"-14 DRILL-FLEX SELF DRILLING SCREW	3/8" DIA. SS HELIX Kwik Bolt T2 EXPANSION ANCHOR					
MINIMUM THREAD PENETRATION	N/A	2-1/2"	12 GAUGE	2"					
MINIMUM EDGE DISTANCE	N/A	1-1/2"	3/8"	3"					
MINIMUM END DISTANCE	N/A	4-1/2"	4-1/2"	4-1/2"					
MINIMUM SPACING	N/A	1-1/2"	6"	6"					

INSTALLATION FASTENER QTY

FAN MODEL	CURB TO FAN			WOOD			STEEL			CONCRETE		
	LONG SIDE	SHORT SIDE	TOTAL	LONG SIDE	SHORT SIDE	TOTAL	LONG SIDE	SHORT SIDE	TOTAL	LONG SIDE	SHORT SIDE	TOTAL
HVAC1	7	4	22	12	6	36	15	7	44	12	6	36



- MIAMI-DADE ND41 ALUMINUM LP-BLAST FANS**
- GENERAL NOTES:**
- THIS APPROVAL IS FOR THE STRUCTURAL CAPACITY AND IMPACT RATING OF THE EXTERIOR HOODING ONLY; IT DOES NOT INCLUDE ANY INTERIOR MECHANISM OR ELECTRICAL PART.
 - THESE FANS HAVE NOT BEEN WIND TESTED FOR WIND BLOWN RAIN TEST PER FLORIDA BUILDING CODE, SECTION 64-05.
 - TESTED IN ACCORDANCE TO FLORIDA BUILDING CODE TEST PROTOCOL, TAZSOL, TAZSOL, TAZSOL.
 - TESTED FOR AREAS INCLUDING HIGH VELOCITY HURRICANE ZONES.
 - TESTED UNDER MIAMI-DADE COUNTY NOTIFICATION NUMBER AIT-0803.

INSTALLATION FASTENER TYPES

FASTENER	WOOD (S&G = 0.42 MIN.)			STEEL (12 GAUGE MIN.)			CONCRETE (2000 PSI MIN. CRACKED CONCRETE)		
	5/16"-18 X 2" SELF DRILLING SCREW (ELO DRILL-FLEX OR BETTER)	3/8" DIA. ZINC PLATED LAG BOLT	1/4"-14 DRILL-FLEX SELF DRILLING SCREW	3/8" DIA. SS HELIX Kwik Bolt T2 EXPANSION ANCHOR					
MINIMUM THREAD PENETRATION	N/A	2-1/2"	12 GAUGE	2"					
MINIMUM EDGE DISTANCE	N/A	1-1/2"	3/8"	3"					
MINIMUM END DISTANCE	N/A	2-5/8"	3/4"	3"					
MINIMUM SPACING	N/A	1-1/2"	3/4"	5-1/2"					

INSTALLATION FASTENER QTY

FAN MODEL	CURB TO FAN			WOOD (S&G)			STEEL (S&G)			CONCRETE (S&G)		
	PER SIDE	TOTAL	PER SIDE	TOTAL	PER SIDE	TOTAL	PER SIDE	TOTAL	PER SIDE	TOTAL	PER SIDE	TOTAL
CURB	3	12	3	12	4	16	4	16	5	20	4	16

*NOTE: UL 705 INSTALL.

GREASE DUCT & CHIMNEY SPECIFICATIONS:
 PROVIDE GREASE DUCT EQUAL TO CAPTIVEAIRE SYSTEMS MODEL "DW" ROUND 20 GAUGE 430 STAINLESS STEEL DUCTWORK. MODEL "DW" IS LISTED TO UL-1978 AND IS INSTALLED USING "V" CLAMP LOCKING CONNECTIONS SEALED WITH 3M FIRE BARRIER 2000 PLUS. MODEL "DW" DOES NOT REQUIRE WELDING PROVIDING IT HAS BEEN INSTALLED PER THE MANUFACTURES INSTALLATION GUIDE.
 PROVIDE RATED ACCESS DOORS AT EVERY CHANGE IN DIRECTION AND EVERY 12' ON CENTER. PER MANUFACTURES LISTING MODEL "DW" HORIZONTAL RUNS LESS THAN 75 FT. CAN BE SLOPED 1/16" PER 12", HORIZONTAL RUNS MORE THAN 75 FT. CAN BE SLOPED 3/16" PER 12".
 DUCT SHOULD BE SLOPED AS MUCH AS POSSIBLE TO REDUCE THE CHANCE OF GREASE ACCUMULATION IN HORIZONTAL RUNS.
 IF THE DUCT OR CHIMNEY IS WITHIN 18 INCHES OF COMBUSTIBLE MATERIAL, PROVIDE UL-2221 OR UL-103 HT LISTED DOUBLE WALL GREASE DUCT OR DOUBLE WALL CHIMNEY EQUAL TO CAPTIVEAIRE SYSTEMS MODEL "DW- 2R, 2R TYPE HT, 3R, OR 3Z" ROUND 20 GAUGE 430 STAINLESS INNER DUCT INSULATED WITH A 24 GAUGE 430 STAINLESS OUTER SHELL.

CUSTOMER APPROVAL TO MANUFACTURE:

APPROVED AS NOTED

APPROVED WITH NO EXCEPTION TAKEN

REVISE AND RESUBMIT

SIGNATURE _____

YOUR TITLE _____ DATE _____

REVISIONS

DESCRIPTION	DATE

CAPTIVEAIRE

Maryland Mechanical

5523 Research Park Drive, Suite 250, Catonsville, MD, 21228 PHONE: (800) 988-0881 FAX: (912) 275-9311 EMAIL: reg7@captivaire.com

Cava - Delray Beach, FL_R1
 1831 South Federal Highway,
 Delray Beach, FL, 33483

DATE: 6/4/2025

DWG.#: 7564802

DRAWN BY: ABS-76

SCALE: NTS

MASTER DRAWING

SHEET NO. 6

PROJECT NUMBER: CAV148

ISSUE	DATE
PERMIT SET	1.17.2025
REVISION 1	3.14.2025
REVISION 2	1.10.2025
CONSTRUCTION SET	7.18.2025

HOOD DRAWINGS FOR REFERENCE ONLY

HOOD DRAWINGS FOR REFERENCE ONLY

HOOD DRAWINGS FOR REFERENCE ONLY

annex
 ENGINEERING GROUP
 589 w nationwide blvd ste b
 columbus, ohio 43215
 tel: 614.481.2292
 fax: 614.487.8777

ALL DRAWINGS AND SPECIFICATIONS SHALL REMAIN THE PROPERTY OF ANNEX ENGINEERING GROUP AND MAY NOT BE USED, DUPLICATED OR ALTERED WITHOUT THE WRITTEN CONSENT OF THE ENGINEER.

Copyright 2025.

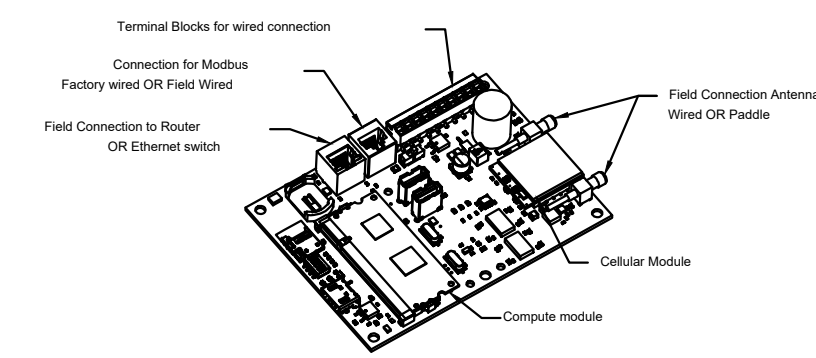
CAVA

CAVA #148 - E DELRAY BEACH, FL
 1831 S. FEDERAL HWY. SUITE 300
 DELRAY BEACH, FL 33483
 FOR CAVA
 14 Ridge Square NW #500, WASHINGTON, DC 20016

SHEET: H1.6

ELECTRICAL PACKAGE - JOB#7564802

NO	TAG	PACKAGE #	LOCATION	SWITCHES		OPTION	FANS CONTROLLED					
				LOCATION	QUANTITY		FAN TAG	TYPE	HP	VOLT	FLA	
1		DCV-1111	UTILITY CABINET LEFT	UTILITY CABINET LEFT	1 LIGHT	SMART CONTROLS DCV	MAU	SUPPLY	3	1,500	208	4.4

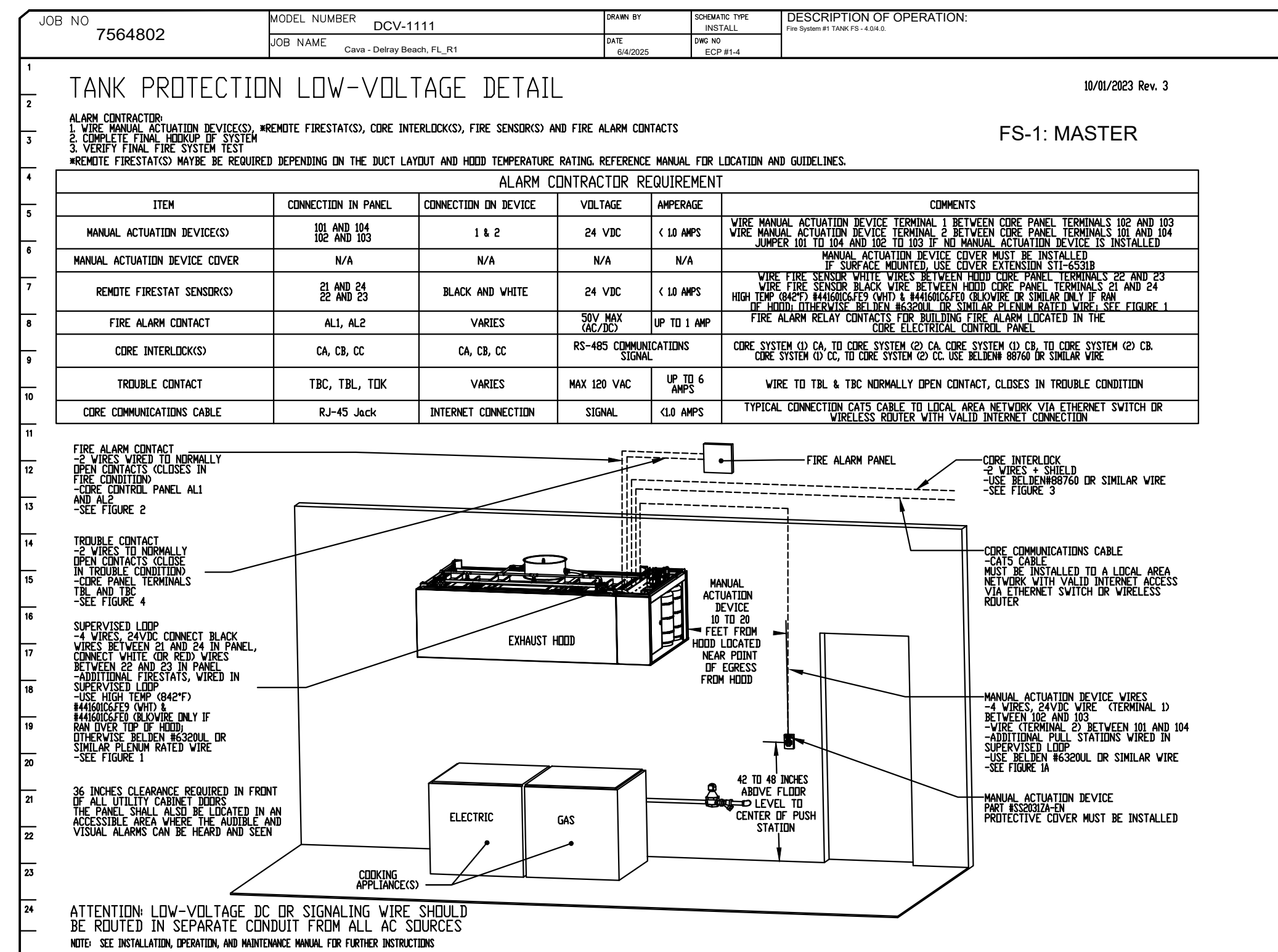
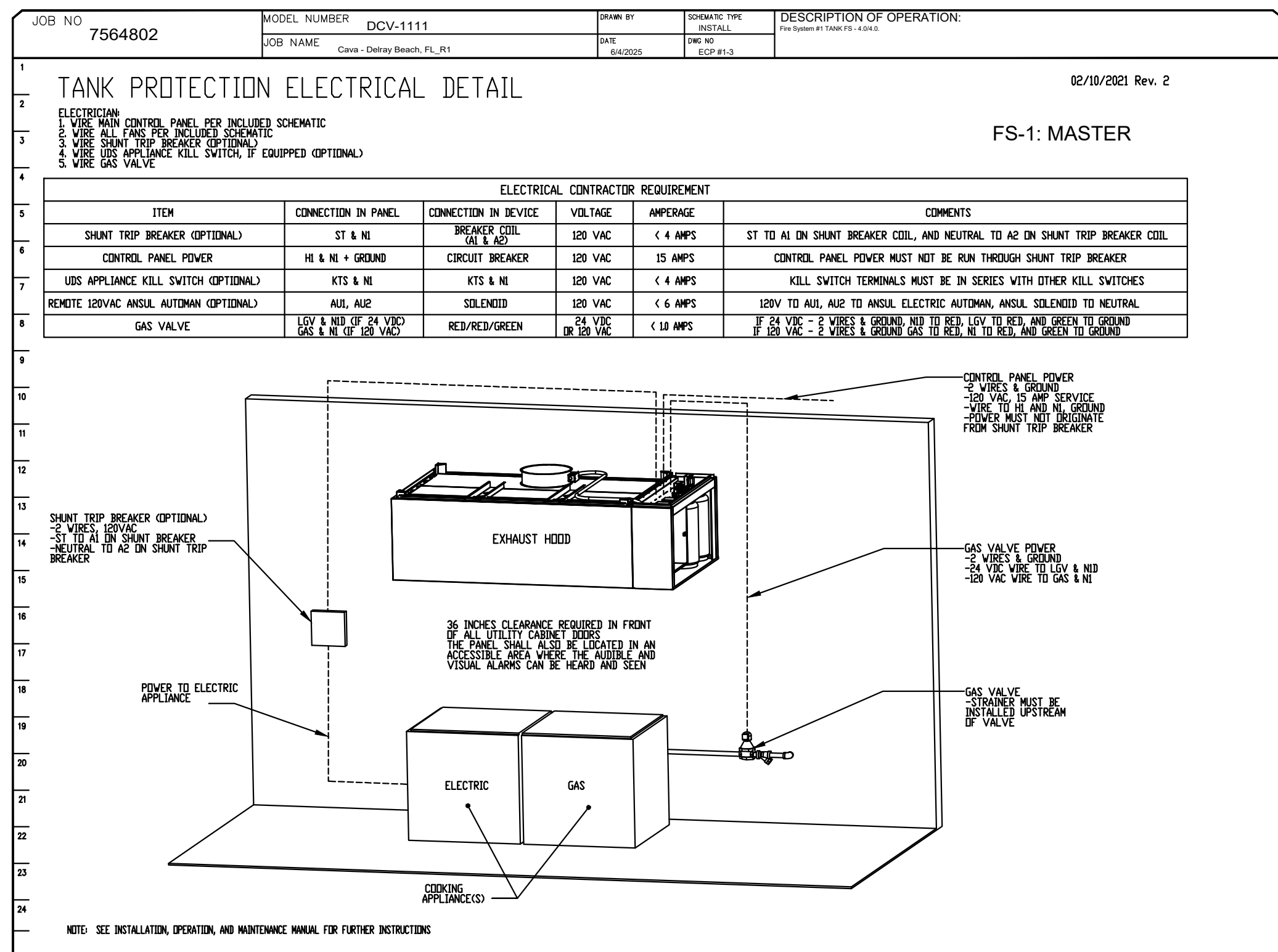
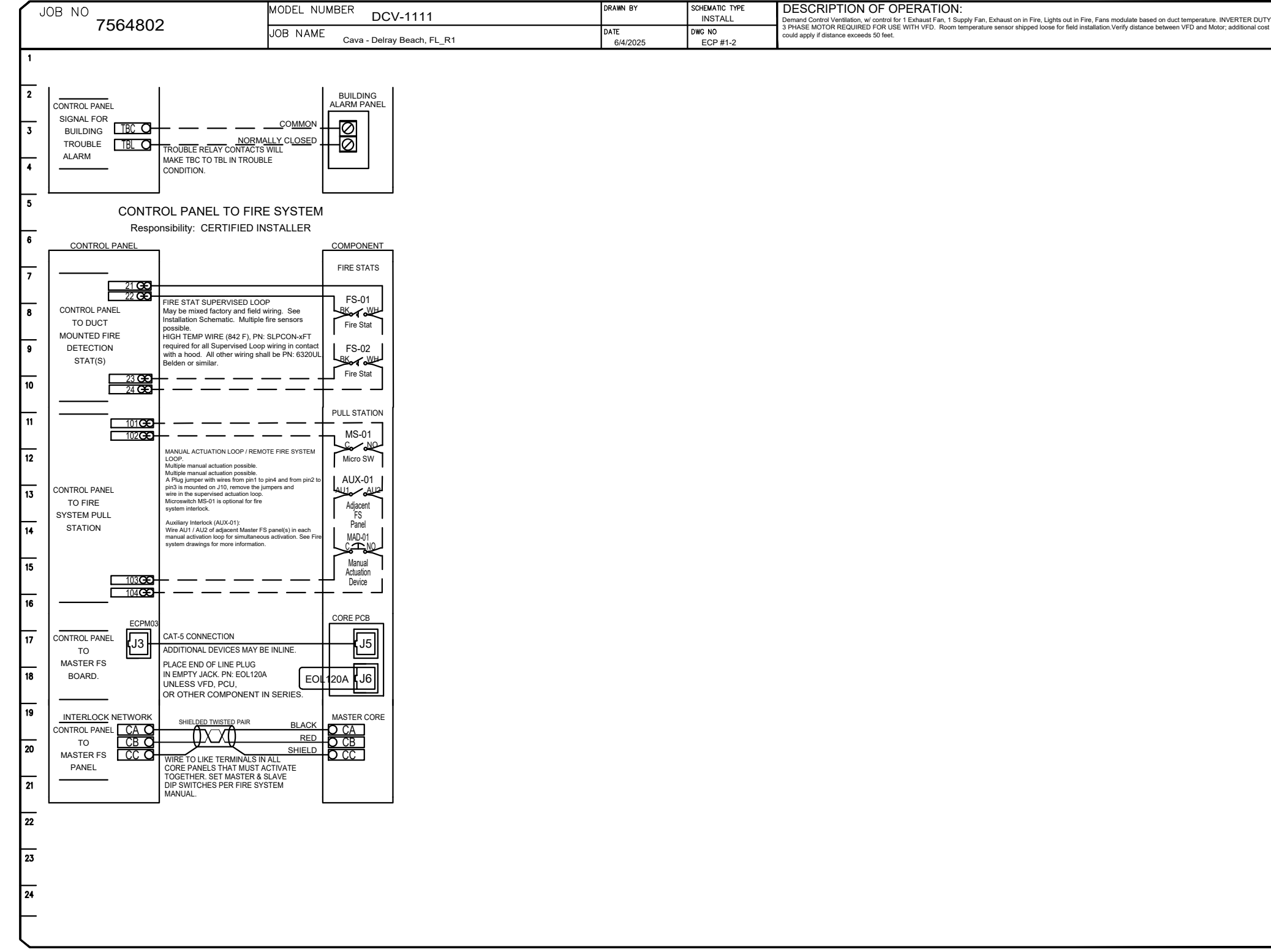
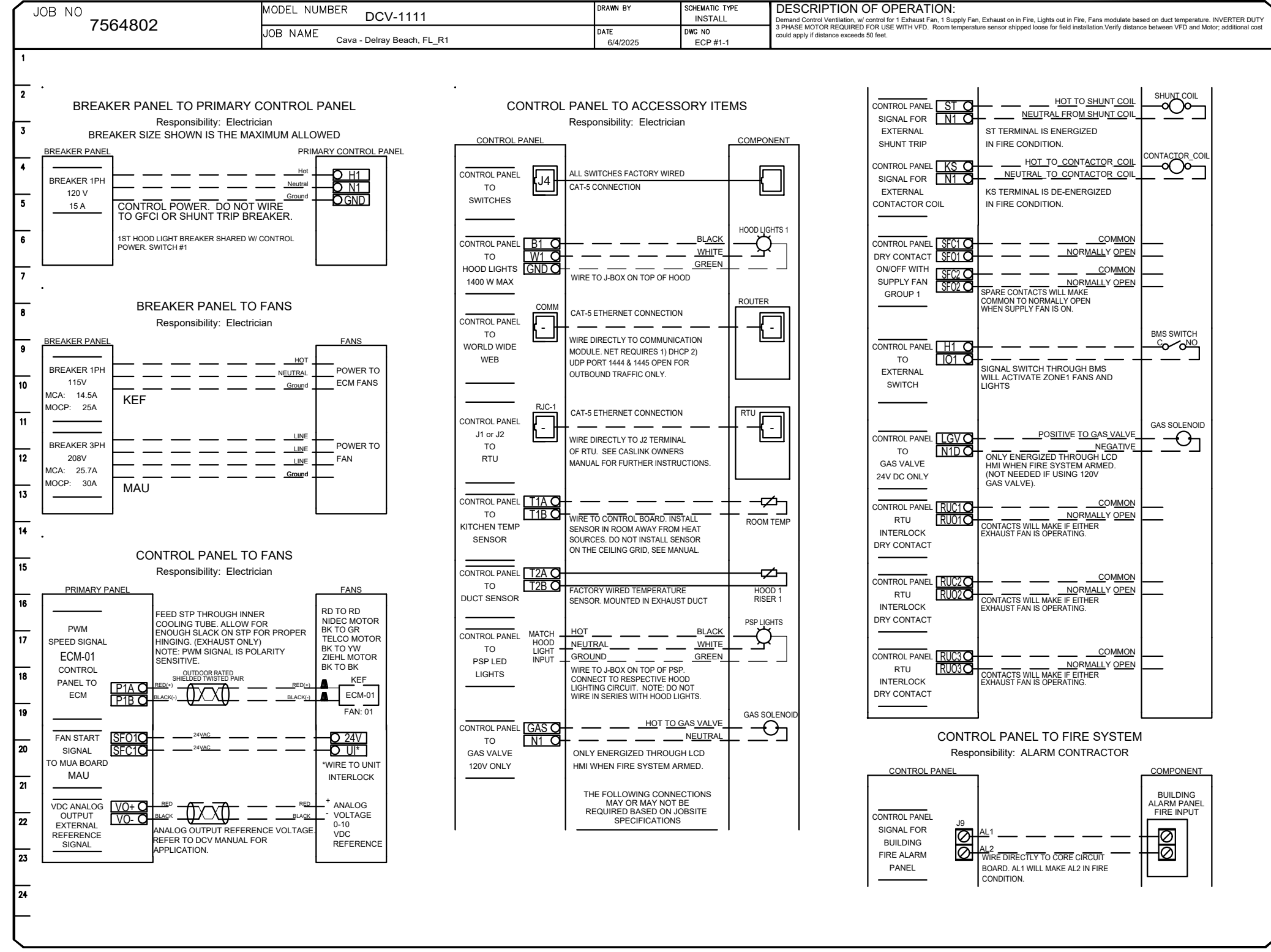


CASlink Monitor and Control

— Hood control panel to support communications to cloud-based Building Management System.
 — Hood Control Panel to allow cloud-based Building Management System to monitor real time parameters outlined as **MONITOR** in the points list.
 — Hood Control Panel to allow cloud-based Building Management System to control parameters outlined as **CONTROL** in the points list.
 — Hood Control Panel to allow cloud-based Building Management System to implement SYSTEMS ENGINEER control strategies for fully integrated Building Management.

MONITORING AND CONTROL POINTS LIST

DC Package	Function	DC Package	Function
Room Temperature	MONITOR	Room Temperature(s)	MONITOR
Duct Temperature(s)	MONITOR	Duct Temperature(s)	MONITOR
MHA Discharge Temperature	MONITOR	MHA Discharge Temperature	MONITOR
Kitchen RTU Discharge Temperature	MONITOR	Kitchen RTU Discharge Temperature	MONITOR
Fan Speed	MONITOR	Combinator Faults	MONITOR
Fan Amperage	MONITOR	Fan Faults	MONITOR
Fan Power	MONITOR	Fan Status	MONITOR
YFD Faults	MONITOR	PCV Faults	MONITOR
Combinator Faults	MONITOR	PCV Filter Clog Percentage	MONITOR
Fan Faults	MONITOR	Fan Conditions	MONITOR
Fan Status	MONITOR	CO2 Gas System	MONITOR
Building Pressure	MONITOR	Building Pressures	MONITOR
PCV Filter Clog Percentage	MONITOR	Fans Status(s)	MONITOR & CONTROL
Fire Condition	MONITOR	Light(s) Status(s)	MONITOR & CONTROL
CO2 Gas System	MONITOR	Wash System	MONITOR & CONTROL
Building Pressure	MONITOR		
Prep Time Button	MONITOR & CONTROL		
Fans Button	MONITOR & CONTROL		
Light(s) Button	MONITOR & CONTROL		
Wash Button	MONITOR & CONTROL		



REVISIONS

NO.	DESCRIPTION	DATE

annex ENGINEERING GROUP
 589 w nationwide blvd ste b
 columbus, ohio 43215
 tel: 614.481.2292
 fax: 614.487.8777

CAPTIVE

Maryland Mechanical
 5625 Research Park Drive, Suite 250, Catonsville, MD 21228
 PHONE: (800) 988-0881 FAX: 9192275931 EMAIL: rsg76@captivemechanical.com

Cava - Delray Beach, FL_R1
 1831 South Federal Highway,
 Delray Beach, FL, 33483

DATE: 6/4/2025
 DWG #: 7564802
 DRAWN BY: ABS-76
 NTS
 SCALE:
 MASTER DRAWING

PROJECT NUMBER: CAV148
 ISSUE DATE DATE
 PERMIT SET 1.17.2025
 REVISION 1 3.14.2025
 REVISION 2 1.10.2025
 CONSTRUCTION SET 7.18.2025

HOOD DRAWINGS FOR REFERENCE ONLY

HOOD DRAWINGS FOR REFERENCE ONLY

SHEET NO. 8

annex ENGINEERING GROUP
 589 w nationwide blvd ste b
 columbus, ohio 43215
 tel: 614.481.2292
 fax: 614.487.8777

Copyright 2025. All drawings and specifications shall remain the property of Annex Engineering Group and may not be used, duplicated or altered without the written consent of the engineer.

CAVA

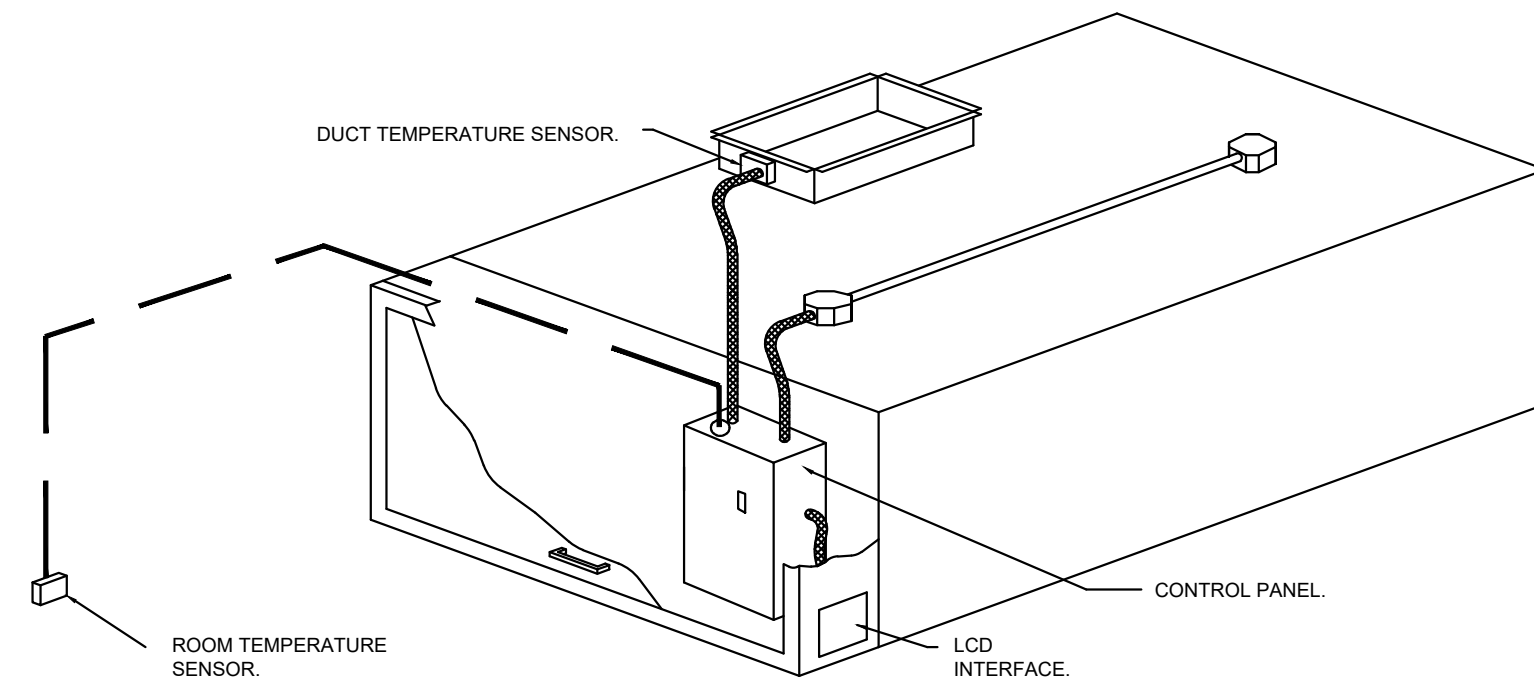
CAVA #148 - E DELRAY BEACH, FL
 1831 S. FEDERAL HWY. SUITE 300
 DELRAY BEACH, FL 33483
 FOR CAVA
 14 Ridge Square NW #500, WASHINGTON, DC 20016

HOOD DRAWINGS FOR REFERENCE ONLY

SHEET: **H1.8**

DEMAND CONTROL VENTILATION HOOD CONTROL PANEL SPECIFICATIONS:

- CONTROLS SHALL BE LISTED BY ETL (UL 508A) AND SHALL COMPLY WITH DEMAND VENTILATION SYSTEM TURNDOWN REQUIREMENTS OUTLINED IN IECC 403.7.5 (2021).
- THE CONTROL ENCLOSURE SHALL BE NEMA 1 RATED AND LISTED FOR INSTALLATION INSIDE OF THE EXHAUST HOOD UTILITY CABINET. THE CONTROL ENCLOSURE MAY BE CONSTRUCTED OF STAINLESS STEEL OR PAINTED STEEL.
- TEMPERATURE PROBE(S) LOCATED IN THE EXHAUST DUCT RISER(S) SHALL BE CONSTRUCTED OF STAINLESS STEEL.
- A DIGITAL CONTROLLER SHALL BE PROVIDED TO ACTIVATE THE HOOD EXHAUST FANS DYNAMICALLY BASED ON A FIXED DIFFERENTIAL BETWEEN THE AMBIENT AND DUCT TEMPERATURE SENSORS. THIS FUNCTION SHALL MEET THE REQUIREMENTS OF IMC 507.1.1.
- A DIGITAL CONTROLLER SHALL PROVIDE ADJUSTABLE HYSTERESIS SETTINGS TO PREVENT CYCLING OF THE FANS AFTER THE COOKING APPLIANCES HAVE BEEN TURNED OFF AND/OR THE HEAT IN THE EXHAUST SYSTEM IS REDUCED.
- A DIGITAL CONTROLLER SHALL PROVIDE AN ADJUSTABLE MINIMUM FAN RUN-TIME SETTING TO PREVENT FAN CYCLING.
- VARIABLE FREQUENCY DRIVES (VFDs) SHALL BE PROVIDED FOR FANS AS REQUIRED. THE DIGITAL CONTROLLER SHALL MODULATE THE VFDs BETWEEN A MINIMUM SETPOINT AND A MAXIMUM SETPOINT ON DEMAND. THE DUCT TEMPERATURE SENSOR INPUT(S) TO THE DIGITAL CONTROLLER SHALL BE USED TO CALCULATE THE SPEED REFERENCE SIGNAL.
- THE VFD SPEED RANGE OF OPERATION SHALL BE FROM 0% TO 100% FOR THE SYSTEM, WITH THE ACTUAL MINIMUM SPEED SET AS REQUIRED TO MEET MINIMUM VENTILATION REQUIREMENTS.
- AN INTERNAL ALGORITHM TO THE DIGITAL CONTROLLER SHALL MODULATE SUPPLY FAN VFD SPEED PROPORTIONAL TO ALL EXHAUST FANS THAT ARE LOCATED IN THE SAME FAN GROUP AS THE SUPPLY FAN.
- THE SYSTEM SHALL OPERATE IN PREP MODE DURING LIGHT COOKING LOAD OR COOL DOWN MODE WHEN SUFFICIENT HEAT REMAINS UNDERNEATH THE HOOD SYSTEM AFTER COOKING OPERATIONS HAVE COMPLETED. OPERATION DURING EITHER OF THESE PERIODS WILL DISABLE THE SUPPLY FANS AND PROVIDE AN EXHAUST FAN SPEED THAT IS EQUAL TO THE MINIMUM VENTILATION REQUIREMENT.
- A DIGITAL CONTROLLER SHALL DISABLE THE SUPPLY FAN(S), ACTIVATE THE EXHAUST FAN(S), ACTIVATE THE APPLIANCE SHUNT TRIP, AND DISABLE AN ELECTRIC GAS VALVE AUTOMATICALLY WHEN FIRE CONDITION IS DETECTED ON A COVERED HOOD.
- A DIGITAL CONTROLLER SHALL ALLOW FOR EXTERNAL BMS FAN CONTROL VIA DRY CONTACT (EXTERNAL CONTROL SHALL NOT OVERRIDE FAN OPERATION LOGIC AS REQUIRED BY CODE).
- AN LCD INTERFACE SHALL BE PROVIDED WITH THE FOLLOWING FEATURES:
 - A. ON/OFF PUSH BUTTON FAN & LIGHT SWITCH ACTIVATION.
 - B. INTEGRATED GAS VALVE RESET FOR ELECTRONIC GAS VALVES (NO RESET RELAY REQUIRED).
 - C. VFD FAULT DISPLAY WITH AUDIBLE & VISUAL ALARM NOTIFICATION.
 - D. DUCT TEMPERATURE SENSOR FAILURE DETECTION WITH AUDIBLE & VISUAL ALARM NOTIFICATION.
 - E. MIS-WIRED DUCT TEMPERATURE SENSOR DETECTION WITH AUDIBLE & VISUAL ALARM NOTIFICATION.
 - F. A SINGLE LOW VOLTAGE CAT-5 RJ45 WIRING CONNECTION.
 - G. AN ENERGY SAVINGS INDICATOR THAT UTILIZES MEASURED KWH FROM THE VFDs.



TYPICAL HOOD CONTROL PANEL INSTALLATION

SEQUENCE OF OPERATIONS:

- THE HOOD CONTROL PANEL IS CAPABLE OF OPERATING IN ONE OR MORE OF THE FOLLOWING STATES AT ANY GIVEN TIME:
- **AUTOMATIC:** THE SYSTEM OPERATES BASED ON THE DIFFERENTIAL BETWEEN ROOM TEMPERATURE AND THE TEMPERATURE AT THE HOOD CAVITY OR EXHAUST DUCT COLLAR. FANS ACTIVATE AT A CONFIGURABLE TEMPERATURE DIFFERENTIAL THRESHOLD. DEPENDING ON THE JOB CONFIGURATION EACH FAN ZONE CAN BE CONFIGURED AS STATIC OR DYNAMIC. THESE TERMS REFER TO WHETHER A VARIABLE MOTOR (SUCH AS EC MOTORS OR VFD DRIVEN MOTORS) MODULATE WITH TEMPERATURE. IF THE PANEL IS EQUIPPED WITH VARIABLE SPEED FANS AND THE ZONE IS DEFINED AS "DYNAMIC", THESE WILL MODULATE WITHIN A USER-DEFINED RANGE BASED ON THE TEMPERATURE DIFFERENTIAL. PANELS EQUIPPED WITH VARIABLE SPEED FANS AND A FAN ZONE DEFINED AS "STATIC", FANS WILL RUN AT A SET SPEED CALCULATED FOR THE DRIVE. DEMAND CONTROL VENTILATION SYSTEMS ARE CAPABLE OF MODULATING EXHAUST AND MAKE UP AIR FAN SPEEDS PER THE REQUIREMENTS OUTLINED IN IECC 403.7.5 (2021).
 - **MANUAL:** THE SYSTEM OPERATES BASED ON HUMAN INPUT FROM AN HMI.
 - **SCHEDULE:** A WEEKLY SCHEDULE CAN BE SET TO RUN FANS FOR A SPECIFIED PERIOD THROUGHOUT THE DAY. THERE ARE THREE OCCUPIED TIMES PER DAY TO ALLOW FOR THE USER TO SET UP A TIME THAT IS SUITABLE TO THEIR NEEDS. ANY TIME THAT IS WITHIN THE DEFINED OCCUPIED TIME, THE SYSTEM WILL RUN AT MODULATION MODE AND FOLLOW THE FAN PROCEDURE ALGORITHM BASED ON TEMPERATURE DURING THIS TIME. DURING UNOCCUPIED TIME, THE SYSTEM WILL HAVE AN EXTRA OFFSET TO PREVENT UNINTENDED ACTIVATION OF THE SYSTEM DURING A TIME WHERE THE SYSTEM IS NOT BEING OCCUPIED.
 - **OTHER:** THE SYSTEM OPERATES BASED ON THE INPUT FROM AN EXTERNAL SOURCE (DDC, BMS OR HARD-WIRED INTERLOCK).
 - **FIRE:** UPON ACTIVATION OF THE HOOD FIRE SUPPRESSION SYSTEM, THE EXHAUST FAN WILL COME ON OR CONTINUE TO TO RUN, THE HOOD MAKEUP AIR WILL SHUTDOWN, AND A SIGNAL WILL BE SENT FOR ACTIVATING THE SHUNT TRIP BREAKER PROVIDED BY THE ELECTRICIAN. FUEL GAS WILL SHUT OFF VIA A MECHANICAL/ELECTRICAL GAS VALVE ACTUATED BY THE HOOD FIRE SUPPRESSION SYSTEM.

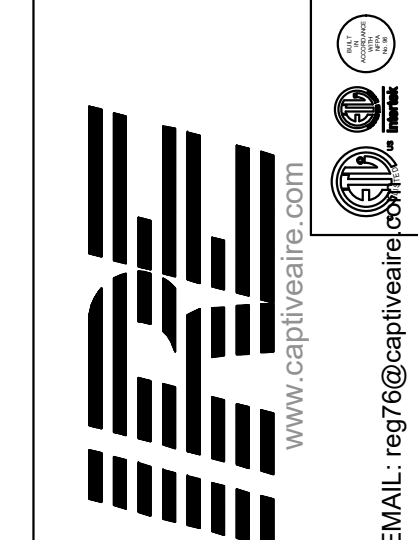
SYSTEM DESIGN VERIFICATION (SDV)

IF ORDERED, CAS SERVICE WILL PERFORM A SYSTEM DESIGN VERIFICATION (SDV) ONCE ALL EQUIPMENT HAS HAD A COMPLETE START UP PER THE OPERATION AND INSTALLATION MANUAL. TYPICALLY, THE SDV WILL BE PERFORMED AFTER ALL INSPECTIONS ARE COMPLETE.

ANY FIELD RELATED DISCREPANCIES THAT ARE DISCOVERED DURING THE SDV WILL BE BROUGHT TO THE ATTENTION OF THE GENERAL CONTRACTOR AND CORRESPONDING TRADES ON SITE. THESE ISSUES WILL BE DOCUMENTED AND FORWARDED TO THE APPROPRIATE SALES OFFICE. IF CAS SERVICE HAS TO RESOLVE A DISCREPANCY THAT IS A FIELD ISSUE, THE GENERAL CONTRACTOR WILL BE NOTIFIED AND BILLED FOR THE WORK. SHOULD A RETURN TRIP BE REQUIRED DUE TO ANY FIELD RELATED DISCREPANCY THAT CANNOT BE RESOLVED DURING THE SDV, THERE WILL BE ADDITIONAL TRIP CHARGES.

DURING THE SDV, CAS SERVICE WILL ADDRESS ANY DISCREPANCY THAT IS THE FAULT OF THE MANUFACTURER. SHOULD A RETURN TRIP BE REQUIRED, THE GENERAL CONTRACTOR AND APPROPRIATE SALES OFFICE WILL BE NOTIFIED. THERE WILL BE NO ADDITIONAL CHARGES FOR MANUFACTURER DISCREPANCIES.

REVISIONS	
DESCRIPTION	DATE



CAPTIVE
 Maryland Mechanical
 5223 Research Park Drive, Suite 250, Catonsville, MD, 21228 PHONE: (800) 998-0881 FAX: 9192727691 EMAIL: reg76@captiveme.com

Cava - Delray Beach, FL_R1
 1831 South Federal Highway,
 Delray Beach, FL, 33483

DATE: 6/4/2025
DWG.#: 7564802
DRAWN BY: ABS-76
SCALE: NTS
MASTER DRAWING
SHEET NO. 10

annex
 ENGINEERING GROUP
 589 w nationwide blvd ste b
 columbus, ohio 43215
 tel: 614.481.2292
 fax: 614.487.8777



COPYRIGHT 2025.
 ALL DRAWINGS AND SPECIFICATIONS SHALL REMAIN THE PROPERTY OF ANNEX ENGINEERING GROUP AND MAY NOT BE USED, DUPLICATED OR ALTERED WITHOUT THE WRITTEN CONSENT OF THE ENGINEER.

CAVA
 14 Ridge Square NW #500, WASHINGTON, DC 20016

CAVA #148 - E DELRAY BEACH, FL
 1831 S. FEDERAL HWY. SUITE 300
 DELRAY BEACH, FL 33483
 FOR CAVA

PROJECT NUMBER: CAV148	
ISSUE	DATE
PERMIT SET	1.17.2025
REVISION 1	3.14.2025
REVISION 2	1.10.2025
CONSTRUCTION SET	7.18.2025

HOOD DRAWINGS FOR REFERENCE ONLY

SHEET:
H1.10

HOOD DRAWINGS FOR REFERENCE ONLY