

Report By:

National TAB
1329 E. KEMPER ROAD
SUITE 4210
CINCINNATI, OH 45246



Report: TAB Report
Function: Test, Adjust, & Balance
Date: 04/02/2026
Completed By: National TAB

PROJECT
01-26-26 QT #1406 PHOENIX, AZ

2420 E GREENWAY PKWY

PHOENIX, AZ 85032

Client

QUIKTRIP
4705 SOUTH 129TH EAST AVENUE
TULSA, OK 74134

National TAB

Project: 01-26-26 QT #1406 PHOENIX, AZ

Table Of Contents

| Section | Page # |
|---------------------|---------------|
| SUMMARY | 3 |
| REMARKS | 4 |
| BALANCE SCHEDULE | 14 |
| CHECKLISTS | 15 |
| RTU-1 | 22 |
| RTU-2 | 24 |
| RTU-3 | 26 |
| EF-1 - Exhaust | 29 |
| COMBI-OVEN | 31 |
| EF-3 - Hood Exhaust | 33 |
| Kitchen Hood Type I | 35 |
| GRD Layout | 37 |



National TAB

Project: 01-26-26 QT #1406 PHOENIX, AZ
Function: Test, Adjust, & Balance

Project Summary

Project Summary

The summary below provides a quick understanding of our scope of work and general testing procedures. Enclosed in the report are further details about your building performance including recommendations, asset data, and pictures. Our focus is to work with the trades to remedy any issues or deficiencies during the actual field balancing and not after the balancing has occurred to achieve a positive environment and outcome. The level of success is determined by the availability of the trades, possible parts needed, or time constraints.

RTU's (Roof Top Units) w/ Diffusers

Each of the RTU's were measured at their terminal devices or via traverse to establish a total flow for that unit. Each RTU was adjusted to within tolerance of the engineer's design flow. Each outlet was then adjusted for comfort and hood performance. Outside air was measured by reading the intake air opening with a velocity grid and multiplying by the free area. The outside air damper was adjusted until the airflow was within the design requirements. Any equipment that fell outside of that tolerance is noted throughout the report.

Kitchen Exhaust Hood & Associated Fans

Each kitchen exhaust fan was measured at the hood filter bay utilizing a velocity matrix and a manufacturer's correction factor. Each filter velocity is multiplied by the manufacturer's corrected area. The sum of these readings equals the total flow of the exhaust fans. The total flow of the exhaust was then adjusted to within tolerance of the design flow. Any EF's that fell outside of this tolerance is noted throughout the report.

Final Building Tests

After completing the test and balance the final building pressure was measured. It was confirmed that the building pressure fell within acceptable tolerances and that the pressure measurement coincides with the actual and design net airflow. Any deviations from these standards are noted throughout the report. The hood capture was tested at the perimeter of the hood and the cook top level with the equipment heat on to ensure satisfactory hood capture and containment.

Issue List

- BB ALARM WOULDN'T CLEAR AFTER RESET
- CORRECTED GRD
- DAMPER SHAKING DUCT
- DAMPERS NONEXISTENT/INACCESSIBLE
- ECON ACTUATORS NOT RESPONDING TO PC
- EF3 CURB LEAK
- NO ACCESS TO EF2
- NO DAMPERS, CAN'T INCREASE FLOW
- RTU-3 NOT OPERATIONAL

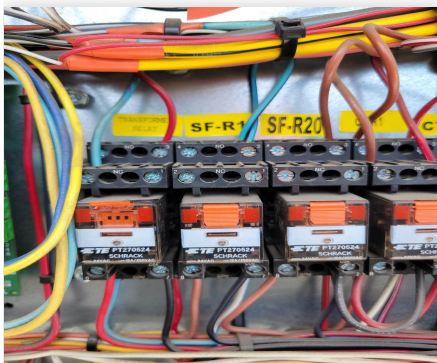


01-26-26 QT #1406 PHOENIX, AZ

Project Issue Information

Issue Name : BB ALARM WOULDN'T CLEAR AFTER RESET
Description : All Units: After unit smoke test, once the detector ctrl panel is reset, the 'bb alarm' should clear from vfd. They are not clearing, so I had to do a temp bypass by shutting off the xformer relay, shown below. RTU1&2 would only run in LO/RE mode. This needs to be fixed ASAP. Could not leave relay on b/c there would be no air supply to store.
Created By : National TAB **Assigned To :** National TAB - Dan Hertenstein
Status : Open
Priority : Urgent **Asset Tag :**
Originated Date : 04/02/2026 - Christine Weale - National TAB

Project Issue File Details



04/04/2026

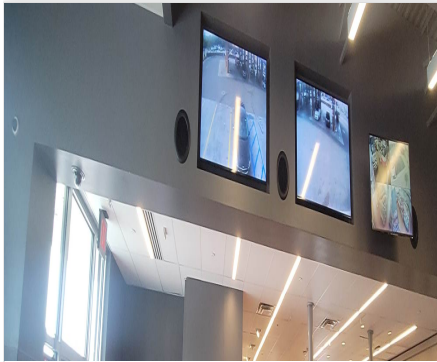


01-26-26 QT #1406 PHOENIX, AZ

Project Issue Information

Issue Name : CORRECTED GRD
Description : There is an extra diffuser on both sides of the sales floor. RTU1-5 is missing.
Created By : National TAB **Assigned To :** National TAB - Dan Hertenstein
Status : Open
Priority : InfoOnly **Asset Tag :**
Originated Date : 04/03/2026 - Christine Weale - National TAB

Project Issue File Details



04/03/2026



01-26-26 QT #1406 PHOENIX, AZ

Project Issue Information

Issue Name : DAMPER SHAKING DUCT
Description : Damper in RTU3-2 is improperly installed, makes a rattling noise, and shakes the entire duct when opened to the proper setting. Had to lower to keep it from shaking. Vid in files and will be sent with report.
Created By : National TAB **Assigned To :** National TAB - Dan Hertenstein
Status : Open
Priority : High **Asset Tag :** SGRD2
Originated Date : 04/03/2026 - Christine Weale - National TAB



01-26-26 QT #1406 PHOENIX, AZ

Project Issue Information

Issue Name : DAMPERS NONEXISTENT/INACCESSIBLE
Description : Dampers for RTU3-5&6 either not installed or inaccessible.
Created By : National TAB **Assigned To :** National TAB - Dan Hertenstein
Status : Open
Priority : Medium **Asset Tag :** SGRD5
Originated Date : 04/04/2026 - Christine Weale - National TAB

Project Issue File Details



04/04/2026



04/04/2026



04/04/2026



01-26-26 QT #1406 PHOENIX, AZ

Project Issue Information

Issue Name : ECON ACTUATORS NOT RESPONDING TO PC
Description : RTU1&2: The econ dampers are not changing w/ Emerson settings. Actuators not responding to store PC... also aren't moving when adjustment on actuator is made. Possibly not wired correctly.
Created By : National TAB **Assigned To :** National TAB - Dan Hertenstein
Status : Open
Priority : High **Asset Tag :**
Originated Date : 04/02/2026 - Christine Weale - National TAB



01-26-26 QT #1406 PHOENIX, AZ

Project Issue Information

Issue Name : EF3 CURB LEAK
Description : EF3 fan is not installed correctly, leak at curb. BP is high enough the extra exhaust will not make building negative, once fixed.
Created By : National TAB **Assigned To :** National TAB - Dan Hertenstein
Status : Open
Priority : High **Asset Tag :** EF3
Originated Date : 04/03/2026 - Christine Weale - National TAB

Project Issue File Details





01-26-26 QT #1406 PHOENIX, AZ

Project Issue Information

Issue Name : NO ACCESS TO EF2
Description : COMBI-OVEN exhaust fan not accessible. These should be accessible so we can take measurements of the units. If it was installed on the other side, it could have been accessed.
Created By : National TAB **Assigned To :** National TAB - Dan Hertenstein
Status : Open
Priority : Low **Asset Tag :** EF2
Originated Date : 04/04/2026 - Christine Weale - National TAB



01-26-26 QT #1406 PHOENIX, AZ

Project Issue Information

Issue Name : NO DAMPERS, CAN'T INCREASE FLOW
Description : Can't increase EF1 or it would cause the other 2 ducts to be out of design. With fan set at 30P, 2/3 are in design. No dampers are available at any of the 3 grilles to 'push' air flow. Not anticipated to cause an issue, but rec adding grille facing dampers such as in several other QTs.
Created By : National TAB **Assigned To :** National TAB - Dan Hertenstein
Status : Open
Priority : Medium **Asset Tag :** EGRD2
Originated Date : 04/03/2026 - Christine Weale - National TAB



01-26-26 QT #1406 PHOENIX, AZ

Project Issue Information

Issue Name : RTU-3 NOT OPERATIONAL
Description : The VFD on RTu-3 is displaying a BB alarm and the unit will not run. Attempted to troubleshoot but was unsuccessful. Unit needs service in order for TAB to be completed. UPDATE: Unit running, but now all units will not clear BB alarm after ctrl reset...see other remark.
Created By : National TAB **Assigned To :** National TAB - Dan Hertenstein
Status : Closed
Priority : Urgent **Asset Tag :** RT-3
Originated Date : 01/29/2026 - Christine Weale - National TAB

AIR BALANCE SCHEDULE

| UNIT | AREA SERVED | HOOD ON OA | | HOOD OFF OA | | HOOD ON EXHAUST | | HOOD OFF EXHAUST | |
|---------------|------------------|------------|--------|-------------|--------|-----------------|--------|------------------|--------|
| | | DESIGN | ACTUAL | DESIGN | ACTUAL | DESIGN | ACTUAL | DESIGN | ACTUAL |
| RTU 1 | SALES | 800 | 873 | 350 | 358 | | | | |
| RTU-2 | SALES | 800 | 839 | 350 | 358 | | | | |
| RTU-3 | BOH/KITCHEN | 800 | 853 | 350 | 364 | | | | |
| EF-1&2 | RR/JANITOR/COMBI | | | | | 750 | 787 | 750 | 787 |
| EF-3 | HOOD | | | | | 1350 | 1263 | 0 | 0 |
| TOTALS | | 2400 | 2565 | 1050 | 1080 | 2100 | 2050 | 750 | 787 |

HOOD ON

NET AIRFLOW CALCULATION

| TOTALS | DESIGN | ACTUAL |
|--------------------|--------|--------|
| TOTAL OA | 2400 | 2565 |
| TOTAL EXHAUST | 2100 | 2050 |
| NET AIRFLOW | 300 | 515 |

| DOOR TESTED | BUILDING PRESSURE MEASUREMENTS | |
|----------------|--------------------------------|-------|
| FRONT | 0.009 | 0.008 |
| SIDE | 0.002 | |
| REAR | | |
| AVERAGE | 0.0063 | |

HOOD OFF

NET AIRFLOW CALCULATION

| TOTALS | DESIGN | ACTUAL |
|--------------------|--------|--------|
| TOTAL OA | 1050 | 1080 |
| TOTAL EXHAUST | 750 | 787 |
| NET AIRFLOW | 300 | 293 |

| DOOR TESTED | BUILDING PRESSURE MEASUREMENTS | |
|----------------|--------------------------------|--|
| FRONT | | |
| SIDE | | |
| REAR | | |
| AVERAGE | | |

NOTES:

Couldn't take "Hood OFF" BP due to kitchen being in use. Also, air curtain would not shut off for rear door.

CheckList List

- 01: RTU's/AHU's
- 02: Exhaust Fans
- 03: Hoods
- 04: Final Tests
- 05: Smoke Detector



01-26-26 QT #1406 PHOENIX, AZ

CheckList Information

Name : 01: RTU's/AHU's **Status :** Completed

Assigned Organization : National TAB **Asset :**

Requesting Organization : National TAB

Created Date : 09/26/2025 - Trinity Dodds - National TAB

Completed Date : 04/04/2026 - Christine Weale - National TAB

CheckList Item Details

RTU's/AHU's

| | |
|-----------------------------|------|
| Evaporator coils are clean? | Pass |
|-----------------------------|------|

Comment:

| | |
|----------------------------|------|
| Condenser coils are clean? | Pass |
|----------------------------|------|

Comment:

| | |
|---------------------------------------------------|-----|
| Gas piping is installed and valves are turned on? | N/A |
|---------------------------------------------------|-----|

Comment:

| | |
|---------------------------------------------|------|
| Unit free of noticeable noise and vibration | Pass |
|---------------------------------------------|------|

Comment:

Notes/Comments :

'RESET' ON UNIT SMOKE DETECTOR CTRL PANEL SHOULD ALSO RESET 'BB ALARM' ON UNITS, IT DID NOT. UNITS HAD TO BE LEFT WITH TRANSFORMER RELAY OFF.

Date :04/04/2026



01-26-26 QT #1406 PHOENIX, AZ

CheckList Information

Name : 02: Exhaust Fans **Status :** Completed
Assigned Organization : National TAB **Asset :**
Requesting Organization : National TAB
Created Date : 09/26/2025 - Trinity Dodds - National TAB
Completed Date : 04/04/2026 - Christine Weale - National TAB

CheckList Item Details

EF's

Hinge kit installed installed on hood fan? Pass

Comment:

Yes, but on wrong side. Should be opposite of the grease cup.

Flex conduit is long enough so that fan can be completely tilted back? Pass

Comment:

No major leakage around the fan base Fail

Comment:

Unit is free of noise and vibration Pass

Comment:



01-26-26 QT #1406 PHOENIX, AZ

CheckList Information

Name : 03: Hoods **Status :** Completed
Assigned Organization : National TAB **Asset :**
Requesting Organization : National TAB
Created Date : 09/26/2025 - Trinity Dodds - National TAB
Completed Date : 04/04/2026 - Christine Weale - National TAB

CheckList Item Details

HOODS

Hood is free of alarms? Pass

Comment:

Hood is free of damage? Pass

Comment:

End panels are installed per prototype? Pass

Comment:



01-26-26 QT #1406 PHOENIX, AZ

CheckList Information

Name : 04: Final Tests **Status :** Completed

Assigned Organization : National TAB **Asset :**

Requesting Organization : National TAB

Created Date : 09/26/2025 - Trinity Dodds - National TAB

Completed Date : 04/04/2026 - Christine Weale - National TAB

CheckList Item Details

FINAL CHECKS

HOOD CAPTURE TEST

List kitchen equipment turned on for testing

Comment:

All equipment on at test time.

List smoke candle type used

Comment:

40s, S102

Smoke test capture % - Perimeter of hood

Comment:

90 - due to air leak at curb, smoke did not sufficiently clear from hood edge.

Smoke test capture % - Top of cooking surface

Comment:

100 - except for what the oven fan pushed out.

WITNESS

Date test was completed

04/02/2026

Comment:

TAB tech name / Firm

Comment:

Christine Weale, NTI

Site super name / Firm

Comment:

Owner representative name / Firm (if Applicable)

Comment:

BUILDING PRESSURE

Do actual net building airflow, design net building airflow, and pressure coincide? If not why? (All three should either be positive or negative)

Pass

Comment:



01-26-26 QT #1406 PHOENIX, AZ

CheckList Information

Name : 05: Smoke Detector **Status :** Completed

Assigned Organization : National TAB **Asset :**

Requesting Organization : National TAB

Created Date : 02/03/2026 - Trinity Dodds - National TAB

Completed Date : 04/04/2026 - Christine Weale - National TAB

CheckList Item Details

Smoke Detector Manufacturer:

Comment:

System Sensor

Smoke Detector Model:

Comment:

AD4S

Accpetable Pressure Range Rating:

Comment:

0.01 to 1.11" w.c.

Actual Measured Pressure Range:

Comment:

RTU1: SNSR1 0.43", SNSR2 0.08" // RTU2: SNSR1 0.34", SNSR2 0.03" // RTU3: SNSR1 0.93", SNSR2 0.14"

Smoke Detector Shutdown?

Pass

Comment:



National TAB

Project: 01-26-26 QT #1406 PHOENIX, AZ

System/Unit: AHU/RTU

Asset: RT-1

AREA:SALES FLOOR

| Unit Data | |
|---------------------|---------------------|
| | Actual |
| MFG | AAON |
| Serial Num | 210809-ANEK17795 |
| Model Num | RN-013-8-0-EA0A-152 |
| Num OA Filters 1 | 1 |
| OA Filter Size 1 | 45X22 |
| Num Final Filter 1 | 2 |
| Final Filter Size 1 | 46X19.5X2 |

| Motor Data | |
|----------------|--------|
| | Actual |
| Motor MFG | NL |
| Frame | NL |
| Horsepower | 3.0 |
| Motor Rpm | 1760 |
| Phase | 3 |
| Rated Voltage | 208 |
| Rated Amperage | 10.6 |

| Test Data | | |
|--------------------------------|--------|--------|
| | Design | Actual |
| SF CFM | 4200 | 4310 |
| SF RPM | - | 36 HZ |
| OA CFM (Hoods On) | 800 | 873 |
| OA CFM (Hoods Off) | 350 | 358 |
| RL Voltage | - | 97.8 |
| RL Amperage | - | 7.56 |
| VFD Max SetPt | - | 60.0 |
| VFD Min SetPt | - | 24.0 |
| OA Damper Position (Hoods On) | - | 46.0 |
| OA Damper Position (Hoods Off) | - | MARKED |

| Performance Data | | |
|------------------|--------|--------|
| | Design | Actual |
| MA Plenum SP | - | -0.42" |
| Fan Suction SP | - | -0.67" |
| Fan Discharge SP | - | 0.31" |
| Total ESP | - | 0.73" |
| Fan Total SP | - | 0.98" |

| General | |
|----------------------------|--------|
| | Actual |
| Fan Rotation Correct | YES |
| Unit Filters Clean | YES |
| Condensate Drain Installed | YES |

Completed By: Christine Weale on 04/03/2026

Unit Data - PHOTO LOG



04/02/2026



04/03/2026



National TAB

Project: 01-26-26 QT #1406 PHOENIX, AZ

System/Unit: AHU/RTU

Asset: RT-2

AREA:SALES FLOOR

| Unit Data | |
|---------------------|---------------------|
| | Actual |
| MFG | AAON |
| Serial Num | 201808-ANEK17797 |
| Model Num | RN-013-8-0-EA0A-152 |
| Num OA Filters 1 | 1 |
| OA Filter Size 1 | 45X22 |
| Num Final Filter 1 | 2 |
| Final Filter Size 1 | 46X19.5X2 |

| Motor Data | |
|----------------|--------|
| | Actual |
| Motor MFG | NL |
| Frame | NL |
| Horsepower | 3.0 |
| Motor Rpm | 1760 |
| Phase | 3 |
| Rated Voltage | 208 |
| Rated Amperage | 10.6 |

| Test Data | | |
|--------------------------------|--------|--------|
| | Design | Actual |
| SF CFM | 4200 | 4412 |
| SF RPM | - | 36 HZ |
| OA CFM (Hoods On) | 800 | 839 |
| OA CFM (Hoods Off) | 350 | 358 |
| RL Voltage | - | 97.5 |
| RL Amperage | - | 7.55 |
| VFD Max SetPt | - | 60.0 |
| VFD Min SetPt | - | 24.0 |
| OA Damper Position (Hoods On) | - | 46.0 |
| OA Damper Position (Hoods Off) | - | MARKED |

| Performance Data | | |
|------------------|--------|--------|
| | Design | Actual |
| MA Plenum SP | - | -0.5" |
| Fan Suction SP | - | -0.72" |
| Fan Discharge SP | - | 0.26" |
| Total ESP | - | 0.76" |
| Fan Total SP | - | 0.98" |

| General | |
|----------------------------|--------|
| | Actual |
| Fan Rotation Correct | YES |
| Unit Filters Clean | YES |
| Condensate Drain Installed | YES |

Completed By: Christine Weale on 04/03/2026

Unit Data - PHOTO LOG



04/03/2026



04/02/2026



National TAB

Project: 01-26-26 QT #1406 PHOENIX, AZ

System/Unit: AHU/RTU

Asset: RT-3

AREA:BOH/KITCHEN

| Unit Data | |
|---------------------|---------------------|
| | Actual |
| MFG | AAON |
| Serial Num | 201808-ANEK17796 |
| Model Num | RN-013-8-0-EA0A-152 |
| Num OA Filters 1 | 1 |
| OA Filter Size 1 | 45X22 |
| Num Final Filter 1 | 2 |
| Final Filter Size 1 | 46X19.5X2 |

| Motor Data | |
|----------------|--------|
| | Actual |
| Motor MFG | NL |
| Frame | NL |
| Horsepower | 3.0 |
| Motor Rpm | 1760 |
| Phase | 3 |
| Rated Voltage | 208 |
| Rated Amperage | 10.6 |

| Test Data | | |
|--------------------------------|--------|--------|
| | Design | Actual |
| SF CFM | 4200 | 4023 |
| SF RPM | - | 42 HZ |
| OA CFM (Hoods On) | 800 | 853 |
| OA CFM (Hoods Off) | 350 | 364 |
| RL Voltage | - | 136.2 |
| RL Amperage | - | 9.35 |
| VFD Max SetPt | - | 70.0 |
| VFD Min SetPt | - | 24.0 |
| OA Damper Position (Hoods On) | - | 46.0 |
| OA Damper Position (Hoods Off) | - | 5.0 |

| Performance Data | | |
|------------------|--------|--------|
| | Design | Actual |
| MA Plenum SP | - | -0.58" |
| Fan Suction SP | - | -0.76" |
| Fan Discharge SP | - | 0.85" |
| Total ESP | - | 1.45" |
| Fan Total SP | - | 1.61" |

| General | |
|----------------------------|--------|
| | Actual |
| Fan Rotation Correct | YES |
| Unit Filters Clean | YES |
| Condensate Drain Installed | YES |

Completed By: Christine Weale on 04/03/2026

Notes:
DAMPERS INACCESSIBLE, MALFUNCTIONING, SEE 'REMARKS'.

Written By: Christine Weale on 04/03/2026

Unit Data - PHOTO LOG



04/03/2026



04/02/2026



National TAB

Project:01-26-26 QT #1406 PHOENIX, AZ

AHU/RTU

Diffuser Supply (GRD)

RT-3/BOH/KITCHEN

| Asset | | | | | | | | | |
|------------|-----------------|------|------|------------|----|--------|--------|-----------|-------------|
| Asset Name | Location | Type | Size | DESIGN CFM | AK | CFM(1) | CFM(2) | FINAL CFM | % to design |
| SGRD1 | SUPPORT SERVICE | SI | 12" | 800 | 1 | 666 | 693 | 799 | 99.9 |
| SGRD2 | SUPPORT SERVICE | SI | 12" | 800 | 1 | 615 | 636 | 537 | 67.1 |
| SGRD3 | SUPPORT SERVICE | SI | 12" | 800 | 1 | 901 | 749 | 735 | 91.9 |
| SGRD4 | SUPPORT SERVICE | SI | 12" | 800 | 1 | 461 | 681 | 676 | 84.5 |
| SGRD5 | WORKROOM | ES | 10" | 500 | 1 | 459 | 329 | 406 | 81.2 |
| SGRD6 | WORKROOM | ES | 10" | 500 | 1 | 880 | 870 | 870 | 174.0 |
| Total | | | | 4200 | | 3982 | 3958 | 4023 | 95.79% |



National TAB

Project: 01-26-26 QT #1406 PHOENIX, AZ

System/Unit: FAN - Exhaust

Asset: EF1

AREA:RR/JANITOR

| Unit Data | | |
|---------------|--------|-------------|
| | Design | Actual |
| MFG | NA | CAPTIVEAIRE |
| Model Num | NA | DR50HFA |
| Serial Num | - | 3483585 |
| Type | - | DOWNBLAST |
| Configuration | - | VERTICAL |

| Motor Data | | |
|------------------|--------|-----------|
| | Design | Actual |
| Motor MFG | - | US MOTORS |
| Frame | - | NL |
| Horsepower | - | 0.5 |
| Motor Rpm | - | 2000 |
| Phase | - | 1 |
| Voltage (rated) | - | 120 |
| Amperage (rated) | - | 5.6 |
| Service Factor | - | NL |

| Test Data | | |
|------------------|--------|--------|
| | Design | Actual |
| CFM | 600 | 612 |
| Fan RPM | - | 565 |
| Fan Rotation | - | CCW |
| Motor RPM | - | 565 |
| System SetPt | - | 30P |
| RL Voltage | - | 123.2 |
| RL Amperage | - | 1.09 |
| Total ESP | - | -0.12" |
| Fan Inlet SP | - | 0.12" |
| Fan Discharge SP | - | ATMS |

Completed By: Christine Weale on 04/03/2026

Unit Data - PHOTO LOG



04/02/2026



National TAB

Project: 01-26-26 QT #1406 PHOENIX, AZ

System/Unit: FAN - Exhaust

Asset: EF2

AREA:COMBI-OVEN

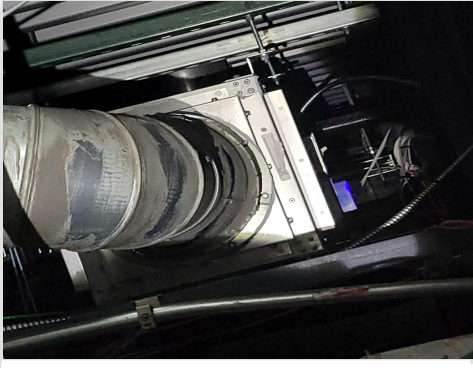
| Unit Data | |
|------------|-------------|
| | Actual |
| MFG | CAPTIVEAIRE |
| Model Num | SIF10DD-SS |
| Serial Num | N/A |

| Test Data | | |
|-------------|--------|--------|
| | Design | Actual |
| CFM | 150 | 175 |
| RL Voltage | - | N/A |
| RL Amperage | - | N/A |

| Motor Data | | |
|------------------|--------|--------|
| | Design | Actual |
| Motor MFG | - | N/A |
| Horsepower | - | 0.25 |
| Motor Rpm | - | 1800 |
| Phase | - | 1 |
| Voltage (rated) | - | 115 |
| Amperage (rated) | - | 2.9 |

Completed By: Christine Weale on 04/03/2026

Unit Data - PHOTO LOG



04/03/2026



National TAB

Project: 01-26-26 QT #1406 PHOENIX, AZ

System/Unit: FAN - Exhaust

Asset: EF3

AREA: KITCHEN HD

| Unit Data | | |
|---------------|----------|-------------|
| | Design | Actual |
| MFG | NA | CAPTIVEAIRE |
| Model Num | NA | DU50HFA |
| Serial Num | - | 8257450 |
| Type | UPBLAST | UPBLAST |
| Configuration | VERTICAL | VERTICAL |

| Motor Data | | |
|------------------|--------|--------------|
| | Design | Actual |
| Motor MFG | - | NEMA (TELCO) |
| Frame | - | 48 |
| Horsepower | 1/2 | 0.5 |
| Motor Rpm | - | 1800 |
| Phase | - | 1 |
| Voltage (rated) | - | 208 |
| Amperage (rated) | - | 3.8 |
| Service Factor | - | NL |

| Test Data | | |
|------------------|--------|---------------|
| | Design | Actual |
| CFM | 1350 | 1263 |
| Fan RPM | - | 1296 |
| Fan Rotation | - | CCW |
| Motor RPM | - | 1296 |
| System SetPt | - | 54.8 HZ - 68% |
| RL Voltage | - | 212.8 |
| RL Amperage | - | 2.3 |
| Total ESP | - | 0.63" |
| Fan Inlet SP | - | -0.63" |
| Fan Discharge SP | - | ATMS |

Completed By: Christine Weale on 04/03/2026

Unit Data - PHOTO LOG



04/02/2026



National TAB

Project: 01-26-26 QT #1406 PHOENIX, AZ

System/Unit: Kitchen Hood Type I

Asset: HD1

AREA:KITCHEN

Unit Data

| | Design | Actual |
|------------------|-------------|------------------|
| MFG | CAPTIVEAIRE | CAPTIVEAIRE |
| Model Num | 6030ND-2-F | 6030ND-2-F |
| Job / Serial Num | - | 8257450 |
| Type | - | TYPE I CANOPY |
| Hood length | - | 108" |
| Hood Width | - | 60" |

Test Data Exhaust

| | Design | Actual |
|-------------------------|--------|------------------|
| Filter Type | - | CAPTRATE SOLO |
| Filter Size 1 | - | 16X20 |
| Filter Qty 1 | - | 6 |
| Filter AK factor size 1 | - | 2.08 |
| Filter Total AK Area | - | 12.48 |
| Filter1 FPM | - | 99 |
| Filter2 FPM | - | 117 |
| Filter3 FPM | - | 98 |
| Filter4 FPM | - | 93 |
| Filter5 FPM | - | 99 |
| Filter6 FPM | - | 101 |
| Filter Ave FPM(corr) | - | 101.2 |
| CFM | 1350 | 1263 |

Cooking Equipment

| | Actual |
|--------|-----------|
| Item 1 | FRYER |
| Item 2 | DUAL-OVEN |

Completed By: Christine Weale on 04/03/2026

Unit Data - PHOTO LOG



04/02/2026

