

Report By:

National TAB
1329 E. KEMPER ROAD
SUITE 4210
CINCINNATI, OH 45246



Report: TAB Report
Function: Test, Adjust, & Balance
Date: 12/02/2025
Completed By: National TAB

PROJECT
12-01-25 WAWA #7614 HEBRON, KY

2335 WATER TOWER DR

HEBRON, KY 41048

Client

Wawa
260 West Baltimore Pike

Wawa, PA 19063

National TAB

Project: 12-01-25 WAWA #7614 HEBRON, KY

Table Of Contents

| Section | Page # |
|-----------------------|---------------|
| Summary | 3 |
| Issues | 4 |
| Balance Schedule | 8 |
| Checklists | 9 |
| AHU/RTU | 19 |
| FAN - Exhaust | 25 |
| GRD | 30 |
| Updated EF-2 Drawings | 31 |



National TAB

Project: 12-01-25 WAWA #7614 HEBRON, KY
Function: Test, Adjust, & Balance

Project Summary

Project Summary

The summary below provides a quick understanding of our scope of work and general testing procedures. Enclosed in the report is further detail about your building performance including recommendations, asset data, and pictures. Our focus is to work with the trades to remedy any issues or deficiencies during the actual field balancing and not after the balancing has occurred to achieve a positive environment and outcome. The level of success is determined by the availability of the trades, possible parts needed, or time constraints.

RTU's (Roof Top Units) w/ Diffusers

Each of the RTU's were measured at their terminal devices or via traverse to establish a total flow for that unit. Each RTU was adjusted to within tolerance of the engineer's design flow. Each outlet was then adjusted to within tolerance of the design flow. Outside air was measured by reading the intake air opening with a velocity grid and multiplying by the free area. The outside air damper was adjusted until the airflow was within the design requirements. Any equipment that fell outside of that tolerance is noted throughout the report.

General Exhaust Fans w/ Grilles

The general exhaust fans were measured by reading each air device with a flow hood. The total airflow for each fan is equivalent to the sum of these readings. Fan speed was then adjusted so that the airflow was within tolerance of design. Each terminal device was balanced to within tolerance of the design volume using the installed volume dampers. Any equipment that fell outside of this tolerance is noted throughout the report.

Ceiling Exhaust Fans

The ceiling exhaust fans were measured using a flow hood. If speed adjustment was provided, the fan speed was adjusted to within design tolerance. Any equipment that fell outside of this tolerance is noted throughout the report.

Final Building Tests

After completing the test and balance the final building pressure was measured. It was confirmed that the building pressure fell within acceptable tolerances and that the pressure measurement coincides with the actual and design net airflow. Any deviations from these standards are noted throughout the report

Issue List

- EF-2 Return Grilles
- RTU Sensor Alarms
- RTU-1 Returns

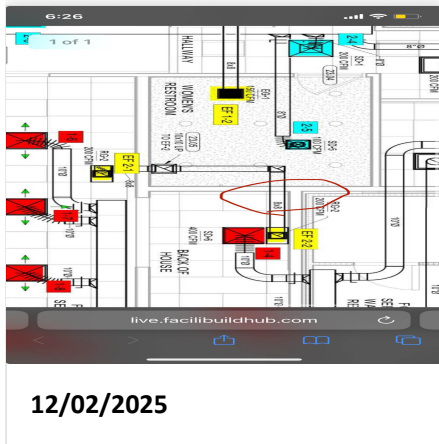


12-01-25 WAWA #7614 HEBRON, KY

Project Issue Information

Issue Name : EF-2 Return Grilles
Description : EF-2 return grilles are not in design. In order to balance exhaust evenly, a damper will need to be added to diffuser 2.
Created By : National TAB **Assigned To :** National TAB - Jordan Best
Status : Open
Priority : Medium **Asset Tag :**
Originated Date : 12/02/2025 - Jordan Best - National TAB

Project Issue File Details



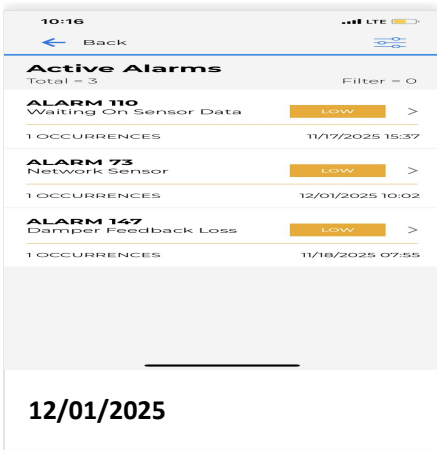


12-01-25 WAWA #7614 HEBRON, KY

Project Issue Information

Issue Name : RTU Sensor Alarms
Description : All 3 RTU's are displaying the same sensor alarms, did not have time to troubleshoot yet but will look further tomorrow.
Created By : National TAB **Assigned To :** National TAB - Jordan Best
Status : Open
Priority : Medium **Asset Tag :**
Originated Date : 12/01/2025 - Jordan Best - National TAB

Project Issue File Details





12-01-25 WAWA #7614 HEBRON, KY

Project Issue Information

Issue Name : RTU-1 Returns
Description : RTU-1, return 1 below is design with damper fully open, return 2 above design with damper fully shut. Possible that damper blade is not fully closing but appears to be functioning as designed.
Created By : National TAB **Assigned To :** National TAB - Jordan Best
Status : Open
Priority : **Medium** **Asset Tag :**
Originated Date : 12/02/2025 - Jordan Best - National TAB

AIR BALANCE SCHEDULE

| UNIT | AREA SERVED | HVAC SUPPLY | | HVAC RETURN | | HVAC OUTDOOR | | OA % | | HOOD MAKE-UP | | HOOD EXHAUST | | GENERAL EXH. | |
|---------------|-------------|-------------|--------|-------------|--------|--------------|--------|--------|--------|--------------|--------|--------------|--------|--------------|--------|
| | | DESIGN | ACTUAL | DESIGN | ACTUAL | DESIGN | ACTUAL | DESIGN | ACTUAL | DESIGN | ACTUAL | DESIGN | ACTUAL | DESIGN | ACTUAL |
| RTU-1 | BOH | 4500 | 4614 | 3500 | 3625 | 1000 | 989 | 22.2% | 21.4% | | | | | | |
| RTU-2 | SALES | 3400 | 3401 | 2900 | 2949 | 500 | 452 | 14.7% | 13.3% | | | | | | |
| RTU-3 | FOH | 2400 | 2286 | 2100 | 1997 | 300 | 289 | 12.5% | 12.6% | | | | | | |
| EF-1 | RR | | | | | | | | | | | | | 375 | 358 |
| EF-2 | BOH | | | | | | | | | | | | | 1100 | 1010 |
| EF-3 | TRASHROOM | | | | | | | | | | | | | 200 | 218 |
| TOTALS | | 10300 | 10301 | 8500 | 8571 | 1800 | 1730 | | | 0 | 0 | 0 | 0 | 1675 | 1586 |

NET BUILDING AIRFLOW CALCULATION

| TOTALS | DESIGN | ACTUAL |
|--------------------|------------|------------|
| TOTAL OA | 1800 | 1730 |
| TOTAL EXHAUST | 1675 | 1586 |
| NET AIRFLOW | 125 | 144 |

| DOOR TESTED | BUILDING PRESSURE MEASUREMENTS (IN. H2O) |
|----------------|--|
| FRONT | 0.004 |
| SIDE | 0.002 |
| REAR | 0.002 |
| AVERAGE | 0.0027 |

FINAL CHECKS

ACTUAL NET AIRFLOW COINCIDES WITH DESIGN: ✓

MEASURED PRESSURES COINCIDES WITH ACTUAL NET AIRFLOW: ✓

PRESSURE FALLS WITHIN IMC TOLERANCE OF +/-0.02" W.C. ✓

NOTES:

CheckList List

- 01: RTU's/AHU's
- 02: LENNOX SETUP PARAMETERS
- 03: SENSOR WIRING (LENNOX)
- 04: EF'S
- 05: CLOSEOUT CHECKS



12-01-25 WAWA #7614 HEBRON, KY

CheckList Information

Name : 01: RTU's/AHU's **Status :** Completed

Assigned Organization : National TAB **Asset :**

Requesting Organization : National TAB

Created Date : 10/31/2025 - Tyce Fox - National TAB

Completed Date : 12/05/2025 - Jordan Best - National TAB

CheckList Item Details

RTU's/AHU's

| | |
|---|------|
| All diffusers and grilles are installed and match design? | Pass |
|---|------|

Comment:

| | |
|--------------------------|------|
| Clean filters installed? | Pass |
|--------------------------|------|

Comment:

| | |
|---|------|
| Economizers are assembled and functional? | Pass |
|---|------|

Comment:

| | |
|--|------|
| Motors are all operating below the FLA rating? | Pass |
|--|------|

Comment:

| | |
|------------------|-----|
| Are belts tight? | N/A |
|------------------|-----|

Comment:

| | |
|---|------|
| If direct drive unit is the speed controller working? | Pass |
|---|------|

Comment:

| | |
|---|-----|
| Is gas piping installed and valves turned on? | N/A |
|---|-----|

Comment:

Condensate drains are installed?

Pass

Comment:

Unit free of noticeable noise and vibration

Pass

Comment:

Final outside air damper position is marked with permanent marker?

N/A

Comment:

No access to economizer gears.

No alarms present?

Fail

Comment:

Alarms present, see issue.

Any noticeable duct leakage?

Comment:

Total supply and OA flows are balanced within +/-5% and supply & return diffusers within +/-10%?

Pass

Comment:

Adjust side wall diffusers on spiral duct that blow towards the coffee island drop-in to prevent issues with it staying at temperature. Fan out of the deflector blades or reduce airflow as necessary to prevent drafting.

Pass

Comment:

IN TEST MODE, TEST THE FOLLOWING:

Cooling mode is operational? Record EAT/LAT for each unit:

Pass

Comment:

RTU-1 EAT: 66 LAT: 44 RTU-2 EAT: 66 LAT: 43 RTU-3 EAT: 66 LAT: 44

Heating mode is operational? Record EAT/LAT for each unit:

Pass

Comment:

RTU-1 EAT: NA LAT: NA RTU-2 EAT: 66 LAT: 98 RTU-3 EAT: 66 LAT: 96

Dehumidification mode is operational? (Feel dehumidification coil with your hand. Is it hot?) Record EAT/LAT for each unit:

Pass

Comment:

RTU-1 EAT: 66 LAT: 64 RTU-2 EAT: 66 LAT: 42 RTU-3 EAT: 66 LAT: 43



12-01-25 WAWA #7614 HEBRON, KY

CheckList Information

Name : 02: LENNOX SETUP PARAMETERS **Status :** Completed
Assigned Organization : National TAB **Asset :**
Requesting Organization : National TAB
Created Date : 10/31/2025 - Tyce Fox - National TAB
Completed Date : 12/02/2025 - Jordan Best - National TAB

CheckList Item Details

UNIT ID CONFIGURATIONS

BACNET CONFIGURATION: GO TO SETTINGS>GENERAL>CONFIGURATION ID1 POSITION 5 SET TO "N". Pass

Comment:

NETWORK CONFIGURATION: GO TO SETUP>NETWORK INTEGRATION, SET TO BACNET IP Pass

Comment:

CONTROL MODE: SET CONTROL MODE TO ROOM SENSOR: CO2, TEMP & HUMIDITY (PER UNIT, AS NEEDED). Pass

Comment:

INDIVIDUAL PARAMETER CONFIGURATIONS (MECHANICAL CONTRACTOR TO DEFINE / AS APPLICABLE):

PARAMETER 105 DEHUMID MODE: 7 NO CONDITIONS Pass

Comment:

PARAMETER 106 DEHUMID SETPOINT: 50, THIS IS A CENTERED SET POINT (+/-) Yes

Comment:

PARAMETER 107 DEHUMID DEADBAND: 3 (DEFAULT) THIS IS THE ACTUAL +/- VALUE Pass

Comment:

PARAMETER 117 CO2 DAMPER MAX OPEN: 50%

Pass

Comment:

PARAMETER 118 CO2 START OPEN PPM: 1500

Pass

Comment:

PARAMETER 119 CO2 MAX OPEN PPM: 1500

Pass

Comment:

PARAMETER 137 OCCHET SET POINT: 68 (BACK UP)

Pass

Comment:

PARAMETER 131 SET TO THE SAME % AS THE MINMIUM OA DAMPER SETPOINT

Pass

Comment:

PARAMETER 139 OCC COOLING SET POINT: 72 (BACK UP)

Pass

Comment:

PARAMETER 154 OCC BLOWER MODE: ON-CONTINUOUS 1

Pass

Comment:

CFM VALUES / MSAV FAN SPEEDS (AIR BALANCER TO DEFINE / IF APPLICABLE):

OA DAMPER SET TO SAME POSITION IN ALL FAN SPEEDS?

Pass

Comment:

ALL FAN SPEEDS SET TO THE SAME CFM VALUE (ENTER SETPOINTS BELOW)

Pass

Comment:

RTU-1: 75% RTU-2: 76% RTU-3: 92%



12-01-25 WAWA #7614 HEBRON, KY

CheckList Information

Name : 03: SENSOR WIRING (LENNOX) **Status :** Completed
Assigned Organization : National TAB **Asset :**
Requesting Organization : National TAB
Created Date : 10/31/2025 - Tyce Fox - National TAB
Completed Date : 12/02/2025 - Jordan Best - National TAB

CheckList Item Details

COMBINATION TEMPERATURE/HUMIDITY SENSOR

Sensors are installed where shown on the drawing? Pass

Comment:

2 conductor shielded cable has one wire landed to Vin, one to GND, and the shield wire is not connected. Pass

Comment:

For second shielded cable, one wire is landed to Vout and the shield wire is not connected. Pass

Comment:

Verify that the CORE or Prodigy controller is sensing a relative humidity (record the reading) Pass

Comment:

RTU-1: 26% RTU-2: 25% RTU-3: 25%



12-01-25 WAWA #7614 HEBRON, KY

CheckList Information

Name : 04: EF'S **Status :** Completed
Assigned Organization : National TAB **Asset :**
Requesting Organization : National TAB
Created Date : 10/31/2025 - Tyce Fox - National TAB
Completed Date : 12/02/2025 - Jordan Best - National TAB

CheckList Item Details

EF's

Rotation is correct? Pass

Comment:

Belts are tight (if applicable)? N/A

Comment:

Speed controller installed and functional (if applicable)? Pass

Comment:

There is no major leakage around base of fan? Pass

Comment:

Is the motor operating below the motor FLA rating? Pass

Comment:

Back draft damper installed and can it fully open? Pass

Comment:

Unit free of noticeable noise and vibration? Pass

Comment:

Total exhaust flow balanced within +/-5% and grilles are within +/-10%?

Pass

Comment:

EF-2 91% @ highest speed.



12-01-25 WAWA #7614 HEBRON, KY

CheckList Information

Name : 05: CLOSEOUT CHECKS **Status :** Completed

Assigned Organization : National TAB **Asset :**

Requesting Organization : National TAB

Created Date : 10/31/2025 - Tyce Fox - National TAB

Completed Date : 12/02/2025 - Jordan Best - National TAB

CheckList Item Details

SPACE COMFORT

Is space free of drafting? Pass

Comment:

Is space comfortable in all areas? Pass

Comment:

Is the space free of ventilation noise? Pass

Comment:

BUILDING PRESSURE

Do actual net building airflow, design net building airflow, and pressure coincide? If not why? (All three should either be positive or negative) Pass

Comment:

National TAB

Project: 12-01-25 WAWA #7614 HEBRON, KY

System/Unit: AHU/RTU



Asset: RTU1

AREA:BOH

| Unit Data | | |
|---------------------|-----------|------------|
| | Design | Actual |
| MFG | LENNOX | LENNOX |
| Serial Num | - | 5625B01307 |
| Model Num | LCT150H5E | LCT150H5E |
| Type | RTU | RTU |
| Configuration | VERTICAL | VERTICAL |
| Num OA Filters 1 | - | 2 |
| OA Filter Size 1 | - | 24"X15" |
| Num Final Filter 1 | - | 4 |
| Final Filter Size 1 | - | 20"X25"X2" |

| Motor Data | | |
|----------------|--------|--------|
| | Design | Actual |
| Horsepower | 3.75 | 3.8 |
| Phase | 3 | 3 |
| Rated Voltage | 208 | 208 |
| Rated Amperage | - | 8 |

| Test Data | | |
|------------------------|--------|-----------------------|
| | Design | Actual |
| SF CFM | 4500 | 4614 |
| RA CFM | 3500 | 3625 |
| OA CFM | 1000 | 989 |
| RL Voltage | - | 212.5 / 213.7 / 211.5 |
| RL Amperage | - | 3.74 / 3.75 / 3.95 |
| SF Rotation | - | CORRECT |
| SF System SetPt | - | 75% |
| RA Damper Position | - | 76% |
| Min OA Damper Position | - | 24% |
| Min OA Damper Type | - | ECONOMIZER |
| OA Enthalpy Setpt | - | DEFAULT |

| Performance Data | | |
|------------------|--------|--------|
| | Design | Actual |
| MA Plenum SP | - | -0.32" |
| Fan Suction SP | - | -0.77" |
| Fan Discharge SP | - | 0.6" |
| Total ESP | 0.70" | 0.92" |
| Fan Total SP | - | 1.37" |

| General | |
|----------------------------|--------|
| | Actual |
| Fan Rotation Correct | YES |
| Unit Filters Clean | YES |
| Condensate Drain Installed | YES |

Completed By: Jordan Best on 12/02/2025

National TAB
 Project:12-01-25 WAWA #7614 HEBRON, KY
AHU/RTU



Diffuser Supply (GRD)

RTU1/BOH

| Asset | | | | | | | | | |
|-------------------|-----------------|-------------|-------------|-------------------|-----------|---------------|---------------|------------------|--------------------|
| Asset Name | Location | Type | Size | DESIGN CFM | AK | CFM(1) | CFM(2) | FINAL CFM | % to design |
| SGRD1 | TRASH | SD1 | 10" | 300 | 1 | 447 | 303 | 303 | 101.0 |
| SGRD2 | BOH | SD6 | 10" | 400 | 1 | 293 | 362 | 362 | 90.5 |
| SGRD3 | BOH | SD6 | 10" | 400 | 1 | 414 | 376 | 376 | 94.0 |
| SGRD4 | BOH | SD6 | 10" | 400 | 1 | 421 | 407 | 407 | 101.8 |
| SGRD5 | ELECTRICAL | SD1 | 10" | 375 | 1 | 223 | 360 | 360 | 96.0 |
| SGRD6 | FOOD SERVICE | SD6 | 10" | 425 | 1 | 401 | 456 | 456 | 107.3 |
| SGRD7 | FOOD SERVICE | SD6 | 10" | 425 | 1 | 454 | 463 | 463 | 108.9 |
| SGRD8 | FOOD SERVICE | SD6 | 10" | 425 | 1 | 470 | 442 | 442 | 104.0 |
| SGRD9 | FOOD SERVICE | SD6 | 10" | 425 | 1 | 482 | 451 | 451 | 106.1 |
| SGRD10 | FOOD SERVICE | SD6 | 10" | 425 | 1 | 496 | 464 | 464 | 109.2 |
| SGRD11 | COFFEE | SD6 | 12" | 500 | 1 | 514 | 530 | 530 | 106.0 |
| Total | | | | 4500 | | 4615 | 4614 | 4614 | 102.53% |

Diffuser Ret/Exh (GRD)

RTU1/BOH

| Asset | | | | | | | | | |
|-------------------|-----------------|-------------|-------------|-------------------|-----------|---------------|---------------|------------------|--------------------|
| Asset Name | Location | Type | Size | DESIGN CFM | AK | CFM(1) | CFM(2) | FINAL CFM | % to design |
| EGRD1 | WASHROOM | RG1 | 16X14 | 1200 | 1.2 | 807 | 896 | 896 | 74.7 |
| EGRD2 | BEVERAGE | RG1 | 14" | 870 | 1.2 | 1114 | 982 | 982 | 112.9 |
| EGRD3 | BEVERAGE | RG1 | 14" | 870 | 1.2 | 784 | 909 | 909 | 104.5 |
| EGRD4 | BEVERAGE | RG1 | 14" | 860 | 1.2 | 1022 | 860 | 860 | 100.0 |
| Total | | | | 3800 | | 3727 | 3647 | 3647 | 95.97% |

Completed By: Jordan Best on 12/02/2025

National TAB

Project: 12-01-25 WAWA #7614 HEBRON, KY

System/Unit: AHU/RTU



Asset: RTU2

AREA:SALES

| Unit Data | | |
|---------------------|-----------|------------|
| | Design | Actual |
| MFG | LENNOX | LENNOX |
| Serial Num | - | 5625B02855 |
| Model Num | LGT102H5E | LGT102H5E |
| Type | RTU | RTU |
| Configuration | VERTICAL | VERTICAL |
| Num OA Filters 1 | - | 2 |
| OA Filter Size 1 | - | 24"X15" |
| Num Final Filter 1 | - | 4 |
| Final Filter Size 1 | - | 20"X25"X2" |

| Motor Data | | |
|----------------|--------|--------|
| | Design | Actual |
| Horsepower | 3.75 | 3.8 |
| Phase | 3 | 3 |
| Rated Voltage | 208 | 208 |
| Rated Amperage | - | 8 |

| Test Data | | |
|------------------------|--------|-----------------------|
| | Design | Actual |
| SF CFM | 3400 | 3401 |
| RA CFM | 2900 | 2949 |
| OA CFM | 500 | 452 |
| RL Voltage | - | 211.7 / 213.6 / 213.6 |
| RL Amperage | - | 3.86 / 4.07 / 3.96 |
| SF Rotation | - | CORRECT |
| SF System SetPt | - | 76% |
| RA Damper Position | - | 79% |
| Min OA Damper Position | - | 21% |
| Min OA Damper Type | - | ECONOMIZER |
| OA Enthalpy Setpt | - | DEFAULT |

| Performance Data | | |
|------------------|--------|--------|
| | Design | Actual |
| MA Plenum SP | - | -0.21" |
| Fan Suction SP | - | -0.87" |
| Fan Discharge SP | - | 0.65" |
| Total ESP | 1" | 0.86" |
| Fan Total SP | - | 1.52" |

| General | |
|----------------------------|--------|
| | Actual |
| Fan Rotation Correct | YES |
| Unit Filters Clean | YES |
| Condensate Drain Installed | YES |

Completed By: Jordan Best on 12/02/2025

Notes:

. Diffuser correction factor 0.7 used for diffusers on round spiral duct.

Written By: Jordan Best on 12/02/2025

National TAB
 Project:12-01-25 WAWA #7614 HEBRON, KY
AHU/RTU



Diffuser Supply (GRD)

RTU2/SALES

| Asset | | | | | | | | | |
|-------------------|-----------------|-------------|-------------|-------------------|-----------|---------------|---------------|------------------|--------------------|
| Asset Name | Location | Type | Size | DESIGN CFM | AK | CFM(1) | CFM(2) | FINAL CFM | % to design |
| SGRD1 | DELIVERY ROOM | SD1 | 8" | 250 | 1 | 281 | 272 | 272 | 108.8 |
| SGRD2 | MENS RR | SD5 | 8" | 150 | 1 | 238 | 141 | 141 | 94.0 |
| SGRD3 | REAR VESTIBULE | SD5 | 8" | 200 | 1 | 277 | 216 | 216 | 108.0 |
| SGRD4 | HALLWAY | SD1 | 8" | 200 | 1 | 302 | 206 | 206 | 103.0 |
| SGRD5 | WOMENS RR | SD5 | 8" | 100 | 1 | 240 | 101 | 101 | 101.0 |
| SGRD6 | SALES | SD2 | 16" | 275 | 0.4 | 301 | 282 | 282 | 102.5 |
| SGRD7 | SALES | SD2 | 12" | 275 | 0.4 | 210 | 287 | 287 | 104.4 |
| SGRD8 | SALES | SD2 | 12" | 275 | 0.4 | 237 | 281 | 281 | 102.2 |
| SGRD9 | SALES | SD2 | 12" | 275 | 0.4 | 189 | 2682 | 268 | 97.5 |
| SGRD10 | SALES | SD2 | 20" | 275 | 0.4 | 231 | 59 | 259 | 94.2 |
| SGRD11 | SALES | SD2 | 16" | 275 | 0.4 | 241 | 271 | 271 | 98.5 |
| SGRD12 | SALES | SD2 | 12" | 300 | 0.4 | 242 | 288 | 288 | 96.0 |
| SGRD13 | SALES | SD2 | 12" | 275 | 0.4 | 264 | 258 | 258 | 93.8 |
| SGRD14 | SALES | SD2 | 12" | 275 | 0.4 | 211 | 271 | 271 | 98.5 |
| Total | | | | 3400 | | 3464 | 5615 | 3401 | 100.03% |

Completed By: Jordan Best on 12/01/2025

National TAB

Project: 12-01-25 WAWA #7614 HEBRON, KY

System/Unit: AHU/RTU



Asset: RTU3

AREA:FOH

| Unit Data | | |
|---------------------|-----------|------------|
| | Design | Actual |
| MFG | LENNOX | LENNOX |
| Serial Num | - | 5625A03918 |
| Model Num | LGT072H5E | LGT072H5E |
| Type | RTU | RTU |
| Configuration | VERTICAL | VERTICAL |
| Num OA Filters 1 | - | 1 |
| OA Filter Size 1 | - | 15"X30" |
| Num Final Filter 1 | - | 4 |
| Final Filter Size 1 | - | 20"X20"X2" |

| Motor Data | | |
|----------------|--------|--------|
| | Design | Actual |
| Horsepower | 1.5 | 1.5 |
| Phase | 3 | 3 |
| Rated Voltage | 208 | 208 |
| Rated Amperage | - | 4.4 |

| Test Data | | |
|------------------------|--------|-----------------------|
| | Design | Actual |
| SF CFM | 2400 | 2286 |
| RA CFM | 2100 | 1997 |
| OA CFM | 300 | 289 |
| RL Voltage | - | 213.6 / 213.6 / 211.6 |
| RL Amperage | - | 3.76 / 3.67 / 3.78 |
| SF Rotation | - | CORRECT |
| SF System SetPt | - | 92% |
| RA Damper Position | - | 88% |
| Min OA Damper Position | - | 12% |
| Min OA Damper Type | - | ECONOMIZER |
| OA Enthalpy Setpt | - | DEFAULT |

| Performance Data | | |
|------------------|--------|--------|
| | Design | Actual |
| MA Plenum SP | - | -0.59" |
| Fan Suction SP | - | -0.89" |
| Fan Discharge SP | - | -0.72" |
| Total ESP | 0.5" | 1.31" |
| Fan Total SP | - | 1.61" |

| General | |
|----------------------------|--------|
| | Actual |
| Fan Rotation Correct | YES |
| Unit Filters Clean | YES |
| Condensate Drain Installed | YES |

Completed By: Jordan Best on 12/02/2025

Notes:
 . Diffuser correction factor 0.7 used for diffusers on round spiral duct.

Written By: Jordan Best on 12/02/2025

National TAB
 Project:12-01-25 WAWA #7614 HEBRON, KY
AHU/RTU



Diffuser Supply (GRD)

RTU3/FOH

| Asset | | | | | | | | | |
|-------------------|-----------------|-------------|-------------|-------------------|-----------|---------------|---------------|------------------|--------------------|
| Asset Name | Location | Type | Size | DESIGN CFM | AK | CFM(1) | CFM(2) | FINAL CFM | % to design |
| SGRD1 | ASSOCIATE AREA | SD1 | 8" | 200 | 1 | 324 | 198 | 198 | 99.0 |
| SGRD2 | OFFICE | SD1 | 8" | 150 | 1 | 330 | 156 | 156 | 104.0 |
| SGRD3 | FOH | SD5 | 18" | 250 | 1 | 170 | 227 | 227 | 90.8 |
| SGRD4 | FOH | SD2 | 18" | 450 | 0.4 | 354 | 428 | 428 | 95.1 |
| SGRD5 | FOH | SD2 | 18" | 450 | 0.4 | 387 | 419 | 419 | 93.1 |
| SGRD6 | FOH | SD2 | 14" | 450 | 0.4 | 367 | 407 | 407 | 90.4 |
| SGRD7 | FOH | SD2 | 14" | 450 | 0.4 | 352 | 451 | 451 | 100.2 |
| Total | | | | 2400 | | 2284 | 2286 | 2286 | 95.25% |

Completed By: Jordan Best on 12/01/2025

National TAB

Project: 12-01-25 WAWA #7614 HEBRON, KY

System/Unit: FAN - Exhaust



Asset: EF1

AREA:RESTROOMS

| Unit Data | | |
|----------------------|-----------|-----------------|
| | Design | Actual |
| MFG | GREENHECK | GREENHECK |
| Model Num | GB-098-6 | G-095-V6-1-17-X |
| Serial Num | - | 26650052 |
| Type | DOWNBLAST | DOWNBLAST |
| Configuration | VERTICAL | VERTICAL |

| Motor Data | | |
|-------------------------|--------|------------|
| | Design | Actual |
| Motor MFG | - | VARI-GREEN |
| Horsepower | 0.167 | 0.167 |
| Motor Rpm | - | 1750 |
| Phase | 1 | 1 |
| Voltage (rated) | 120 | 115 |
| Amperage (rated) | - | 2.2 |

| Test Data | | |
|-------------------------|--------|---------|
| | Design | Actual |
| CFM | 375 | 358 |
| Fan Rotation | - | CORRECT |
| System SetPt | - | 5 |
| RL Voltage | - | 121.2 |
| RL Amperage | - | 0.48 |
| Total ESP | 0.38" | 0.13" |
| Fan Inlet SP | - | -0.13" |
| Fan Discharge SP | - | ATM |

Completed By: Jordan Best on 12/02/2025

National TAB

Project:12-01-25 WAWA #7614 HEBRON, KY

FAN - Exhaust



Diffuser Ret/Exh (GRD)

EF1/RESTROOMS

| Asset | | | | | | | | | |
|------------|-----------|------|------|------------|----|--------|--------|-----------|-------------|
| Asset Name | Location | Type | Size | DESIGN CFM | AK | CFM(1) | CFM(2) | FINAL CFM | % to design |
| EGRD1 | MENS RR | EG1 | 8X8 | 225 | 1 | 283 | 204 | 204 | 90.7 |
| EGRD2 | WOMENS RR | EG1 | 8X8 | 150 | 1 | 225 | 154 | 154 | 102.7 |
| Total | | | | 375 | | 508 | 358 | 358 | 95.47% |

Completed By: Jordan Best on 12/02/2025

National TAB

Project: 12-01-25 WAWA #7614 HEBRON, KY

System/Unit: FAN - Exhaust



Asset: EF2

AREA:BOH

| Unit Data | | |
|---------------|-----------|-------------------|
| | Design | Actual |
| MFG | GREENHECK | GREENHECK |
| Model Num | GB-098-6 | G-120-4-VG-1-19-X |
| Serial Num | - | 26650054 |
| Type | DOWNBLAST | DOWNBLAST |
| Configuration | VERTICAL | VERTICAL |

| Motor Data | | |
|------------------|--------|------------|
| | Design | Actual |
| Motor MFG | - | VARI-GREEN |
| Horsepower | 0.167 | 0.5 |
| Motor Rpm | - | 1725 |
| Phase | 1 | 1 |
| Voltage (rated) | 120 | 115 |
| Amperage (rated) | - | 2.85 |

| Test Data | | |
|------------------|--------|--------|
| | Design | Actual |
| CFM | 1100 | 1010 |
| Fan Rotation | - | CCW |
| System SetPt | - | 10 |
| RL Voltage | - | 121.5 |
| RL Amperage | - | 2.3 |
| Total ESP | 0.38" | 0.21" |
| Fan Inlet SP | - | -0.21" |
| Fan Discharge SP | - | ATM |

Completed By: Jordan Best on 12/02/2025

National TAB

Project: 12-01-25 WAWA #7614 HEBRON, KY

FAN - Exhaust



Diffuser Ret/Exh (GRD)

EF2/BOH

| Asset | | | | | | | | | |
|------------|----------|------|------|------------|----|--------|--------|-----------|-------------|
| Asset Name | Location | Type | Size | DESIGN CFM | AK | CFM(1) | CFM(2) | FINAL CFM | % to design |
| EGRD1 | BOH | RG2 | 8X8 | 400 | 1 | 382 | 382 | 382 | 95.5 |
| EGRD2 | BOH | RG2 | 8X8 | 200 | 1 | 251 | 251 | 251 | 125.5 |
| EGRD3 | BOH | RG2 | 8X8 | 500 | 1 | 377 | 377 | 377 | 75.4 |
| Total | | | | 1100 | | 1010 | 1010 | 1010 | 91.82% |

Completed By: Jordan Best on 12/02/2025

National TAB

Project: 12-01-25 WAWA #7614 HEBRON, KY

System/Unit: FAN - Exhaust



Asset: EF3

AREA:TRASH ROOM

| Unit Data | | |
|---------------|-----------|----------------|
| | Design | Actual |
| MFG | GREENHECK | GREENHECK |
| Model Num | SP-B200 | SP-B200-QD |
| Serial Num | - | 205764333-0029 |
| Type | CEILING | CEILING |
| Configuration | VERTICAL | VERTICAL |

| Test Data | | |
|------------------|--------|-----------------------|
| | Design | Actual |
| CFM | 200 | 218 |
| Fan Rotation | - | CORRECT |
| System SetPt | - | 100% / MARKED ON DIAL |
| Fan Discharge SP | - | ATM |

| Motor Data | | |
|------------------|--------|-----------|
| | Design | Actual |
| Motor MFG | - | GREENHECK |
| Horsepower | 0.167 | 0.033 |
| Motor Rpm | - | 1000 |
| Phase | 1 | 1 |
| Voltage (rated) | 120 | 115 |
| Amperage (rated) | - | 2.7 |

Completed By: Jordan Best on 12/02/2025

