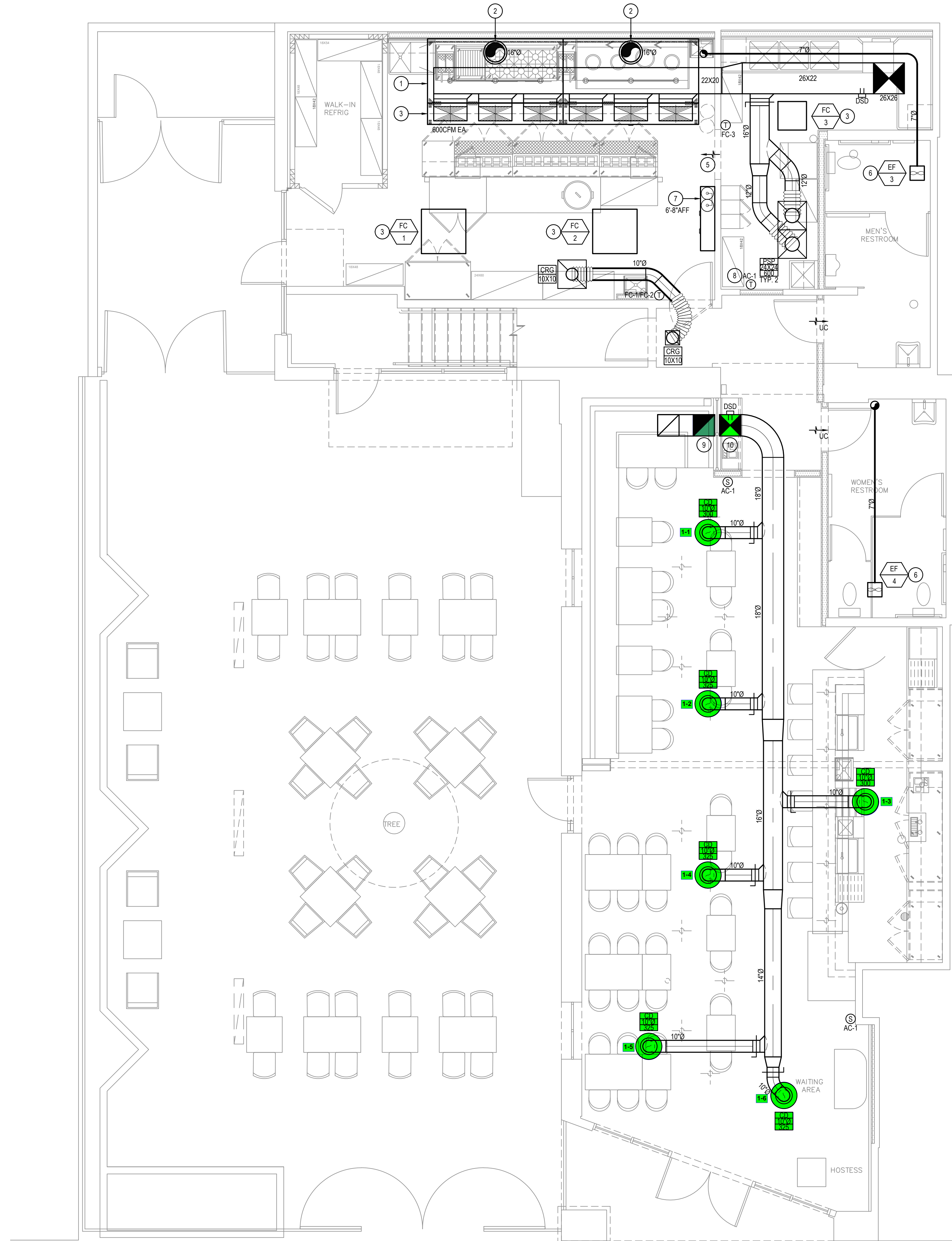


KEYED NOTES:

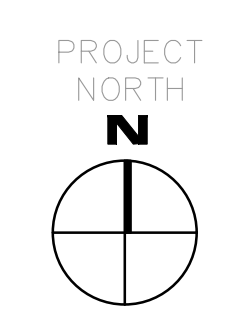
- 1 TYPE 1 HOOD OVER COOKING EQUIPMENT. MECHANICAL CONTRACTOR TO PROVIDE AND INSTALL. VERIFY FINAL DUCT COLLAR LOCATIONS WITH STRUCTURE PRIOR TO ORDER. PROVIDE CAPTIVE/RE DOUBLE-WALL FACTORY-BUILT GREASE DUCT FROM THE HOOD COLLAR THROUGH ROOF TO EXHAUST FANS.
- 2 ALL GREASE EXHAUST DUCTWORK SHALL BE FACTORY BUILT DOUBLE-WALL GREASE DUCT WITH 2590 CLEARANCE TO COMBUSTIBLES. CLEANOUTS SHALL BE PROVIDED AT SIDES OR TOP OF DUCT, WHICHEVER IS MORE ACCESSIBLE AND CHANGES IN DIRECTION PER CMCS10.
- 3 CAPTIVE/RE PSP SUPPLY PLENUM AT FACE OF HOOD. PROVIDE WITH MAKEUP AIR DUCT ABOVE HOOD WITH DUCT TAPS. BALANCE EACH DUCT TAP TO AIRFLOW SHOWN WITH FACTORY BALANCE DAMPERS. PROVIDE WITH SHEET METAL PANEL AT FACE OF PSP TO FORM SOFFIT TO CEILING. ALL DUCTWORK TO BE CONCEALED ABOVE CEILING / HOOD.
- 4 4-WAY BLOW CEILING CASSETTE SUSPENDED FROM STRUCTURE AT 1-BAR CEILING. INSTALL A MIN. OF 7FT AWAY FROM KITCHEN EXHAUST HOOD. SEE PLGS FOR CONDENSATE.
- 5 KITCHEN TRANSFER AIR THROUGH OPENING BETWEEN DISH AREA AND KITCHEN.
- 6 CEILING MOUNT EXHAUST FAN. PROVIDE 75 EXHAUST DUCT. OFFSET ABOVE CEILING AND RUN THROUGH SECOND LEVEL TO ROOF. TERMINATE AT ROOF WITH ROOF CAP AND BUGSCREEN.
- 7 TYPE 1 HOOD FIRE SUPPRESSION CONTROL PANEL. REMOTE MOUNT BELOW CEILING. INSTALL PER MANUFACTURERS REQUIREMENTS. MAINTAIN 3FT CLEARANCE IN FRONT. COORDINATE WITH ELECTRICIAN.
- 8 PROVIDE WALL MOUNT CONTROLLER FOR AC-1 WITH REMOTE TEMP SENSOR. SEE PLANS FOR LOCATIONS.
- 9 18X18 RETURN AIR DUCT FROM ABOVE. OFFSET HORIZONTALLY AND TERMINATE WITH ELBOW UP FOR RETURN. PAINT ALL DUCTWORK MATTE BLACK. COORDINATE HEIGHT AND FINISH WITH GC.
- 10 18X18 SUPPLY AIR DUCT PLENUM FROM ABOVE. TRANSITION TO 18"Ø AND RUN HIGH. PAINT ALL DUCTWORK MATTE BLACK. COORDINATE HEIGHT AND FINISH WITH GC.



1 MECHANICAL GROUND FLOOR PLAN
1/4" = 1'-0"

**MUST BE THAI
AND BAR**
18 N. SAN PEDRO ST.
SAN JOSE, CA 95113

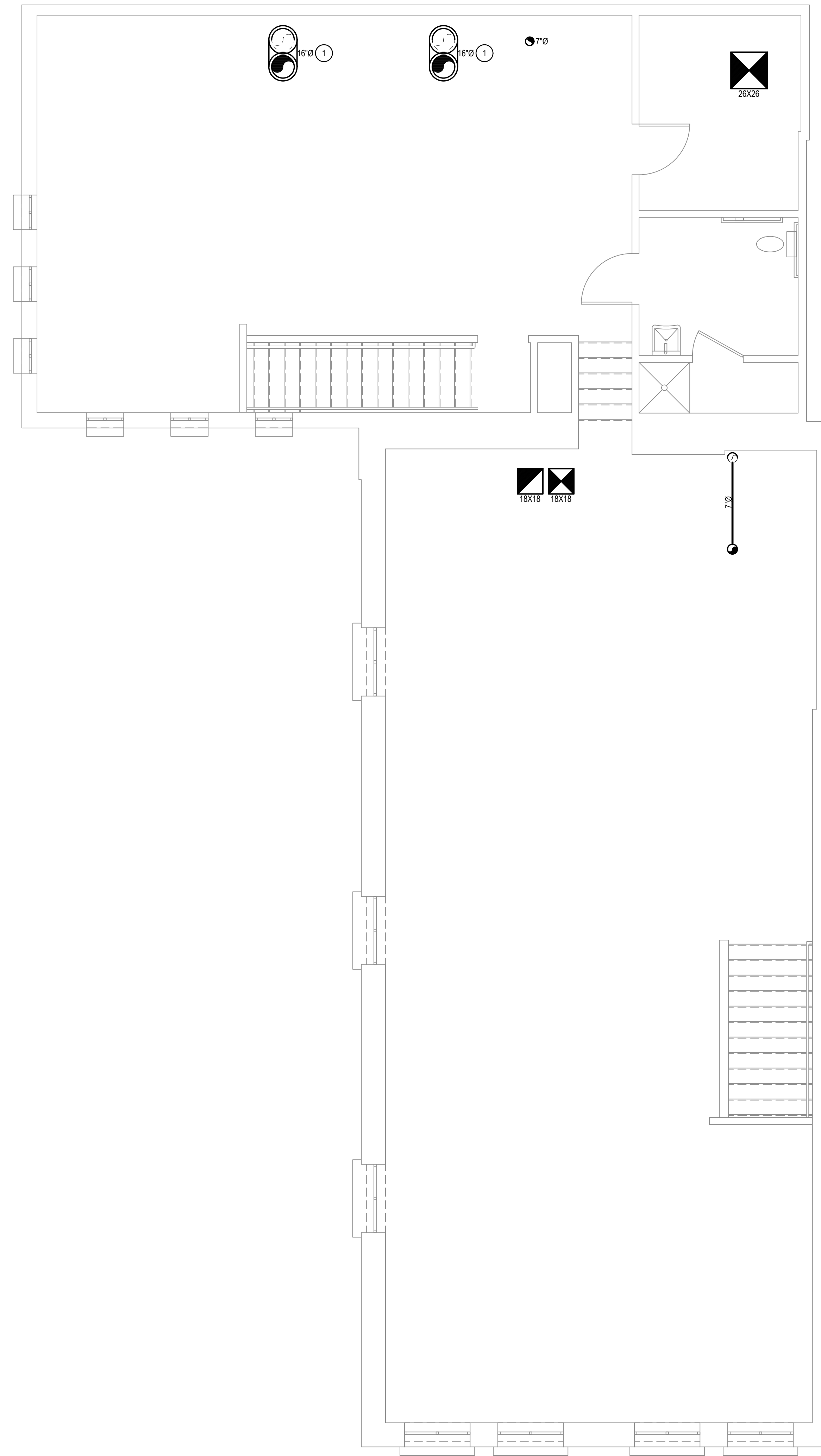
PERMIT	04 22, 24
ISSUE	DESCRIPTION DATE



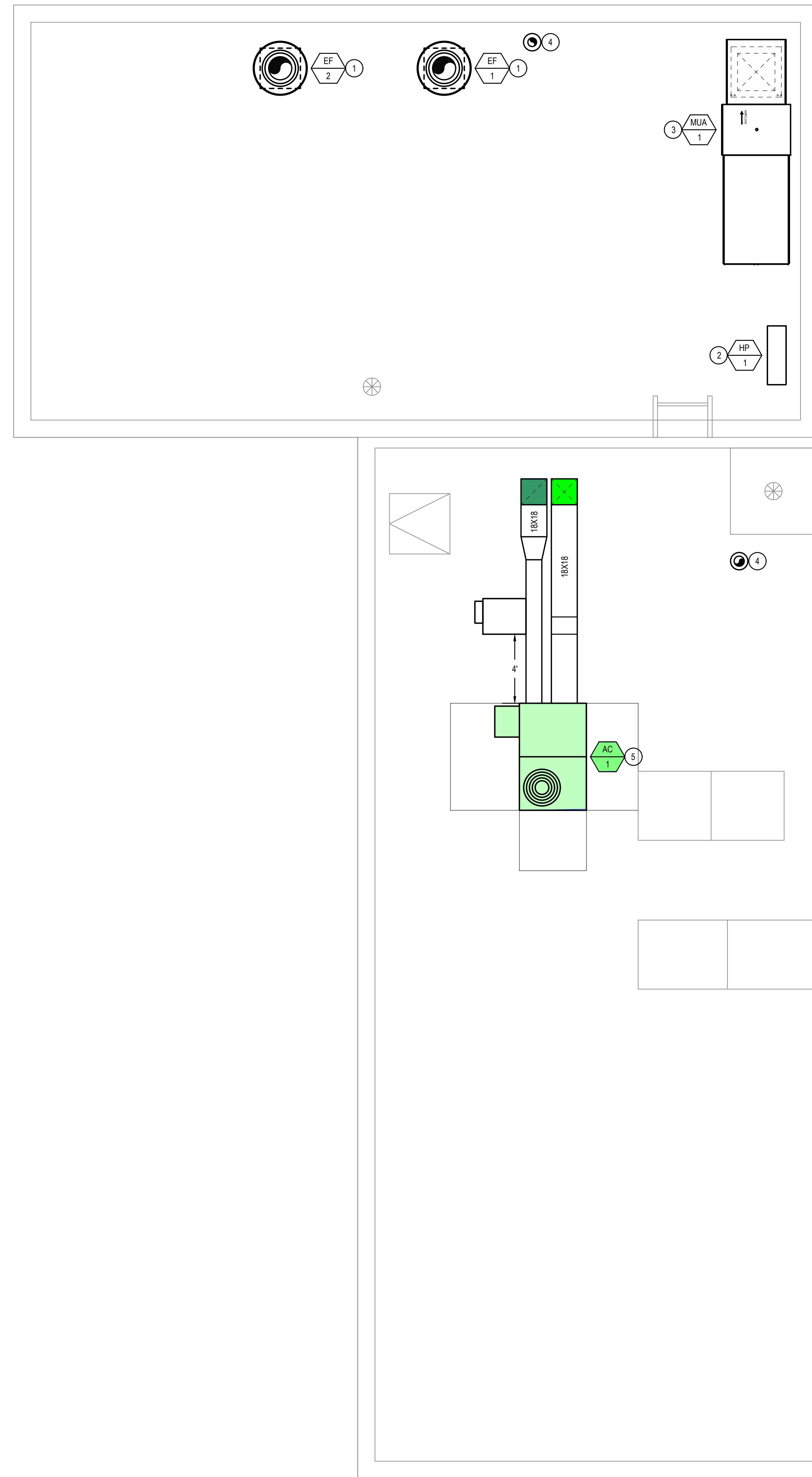
DATE: APRIL 24, 2024
DRAWN BY: NC CHECK: SL
JOB No: SCALE: AS NOTED

MECHANICAL
GROUND FLOOR
PLAN

TITLE:
M2.1
SHEET:



2 MECHANICAL SECOND FLOOR PLAN
1/4" = 1'-0"



1 MECHANICAL ROOF PLAN
3/8" = 1'-0"

KEYED NOTES:

- 1 KITCHEN UPBLAST EXHAUST FAN OVER FACTORY HINGED ROOF CURB FOR TOP CLEANOUT ACCESS. RIM OF DISCHARGE SHALL BE A MIN. OF 4" FROM ROOF DECK OR PARAPET WALL (CMC510 9.18(b)). CONNECT TO DOUBLE-WALL FACTORY GREASE DUCT AT CURB. SEE LEVEL BELOW FOR CONTINUATION.
- 2 HEAT PUMP ON ROOF CURB THROUGH NEOPRENE SOLATORS. INSTALL PER MANUFACTURERS REQUIREMENTS. RUN LINESETS THROUGH SECOND LEVEL TO FAN COILS AT GROUND LEVEL. SEE PIPING AND WIRING DIAGRAMS.
- 3 MAKEUP AIR UNIT ON FACTORY CURB. INSTALL PER MANUFACTURER REQUIREMENTS WITH SIDE ACCESS. COORDINATE MAKEUP WATER AND DRAIN WITH PLUMBER.
- 4 BATHROOM EXHAUST ROOF CAP WITH BUGSCREEN.
- 5 ROOFTOP UNIT OVER FACTORY CURB WITH NEOPRENE SOLATORS. INSTALL PER MANUFACTURERS REQUIREMENTS. PROVIDE WITH FLEXIBLE DUCT CONNECTIONS AND LINED INTAKE AND DISCHARGE FULL SIZE OF UNIT OPENINGS. PROVIDE HORIZONTAL STRAIGHT DUCT RUNS FOR FIRST 4FT.



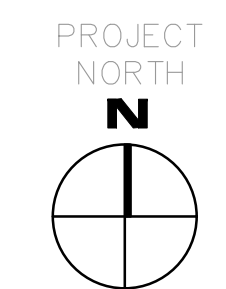
LITZENBERGER ENGINEERING INC.

3008 - F Darville Blvd. #209
Alamo, CA 94507
Phone: (925) 899-7462

**MUST BE THAI
AND BAR**

18 N. SAN PEDRO ST.
SAN JOSE, CA 95113

ISSUE	DESCRIPTION	DATE
PERMIT		04 22, 24



DATE: APRIL 24, 2024
DRAWN BY: NC CHECK: SL
JOB No: SCALE: AS NOTED

MECHANICAL
SECOND FLOOR AND
ROOF PLANS

TITLE:
SHEET: M2.2