

Report By:

National TAB
1329 E. KEMPER ROAD
SUITE 4210
CINCINNATI, OH 45246



Report: TAB

Function: Test, Adjust, & Balance

Date: 01/26/2026

Completed By: National TAB

PROJECT

Must Be Thai And Bar (San Jose, CA)

18 North San Pedro Street

San Jose, CA 95113

Client

Martinico & Sons, Inc.

1776 S. 7th St.

San Jose, CA 95112

National TAB

Project: Must Be Thai And Bar (San Jose, CA)

Table Of Contents

Section	Page #
Certification	3
Equipment Calibrations	4
Abbreviations	5
GRD	6
AHU/RTU	8



CERTIFICATION

PROJECT: Must Be Thai And Bar (San Jose, CA)

The data presented in this report is a record of system measurements and final adjustments that have been obtained in accordance with the current edition of the NEBB *Procedural Standards for Testing, Adjusting, and Balancing of Environmental Systems*. Any variances from design quantities, which exceed NEBB tolerances, are noted in the Test-Adjust-Balance Report Project Summary.

The air distribution system has been tested and balanced and final adjustments have been made in accordance with NEBB standards and the project specifications.

NEBB TAB FIRM: National TAB-Southeast

REGISTRATION NO: 3755

CERTIFIED BY: J. Scott Springer 23312

DATE: 1/28/2026

The hydronic distribution system has been tested and balanced and final adjustments have been made in accordance with NEBB standards and the project specifications.

NEBB TAB FIRM: National TAB-Southeast

REGISTRATION NO: 3755

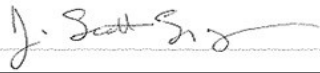
CERTIFIED BY: J. Scott Springer 23312

DATE: _____

Submitted and Certified by:

NEBB TAB FIRM: National TAB-Southeast

TAB PROFESSIONAL: J. Scott Springer

SIGNATURE: 

REGISTRATION NO: 3755 (NTAB) / 23312

CERTIFICATION EXP: 12/31/2026





National TAB

Testing, Adjusting, and Balancing Equipment



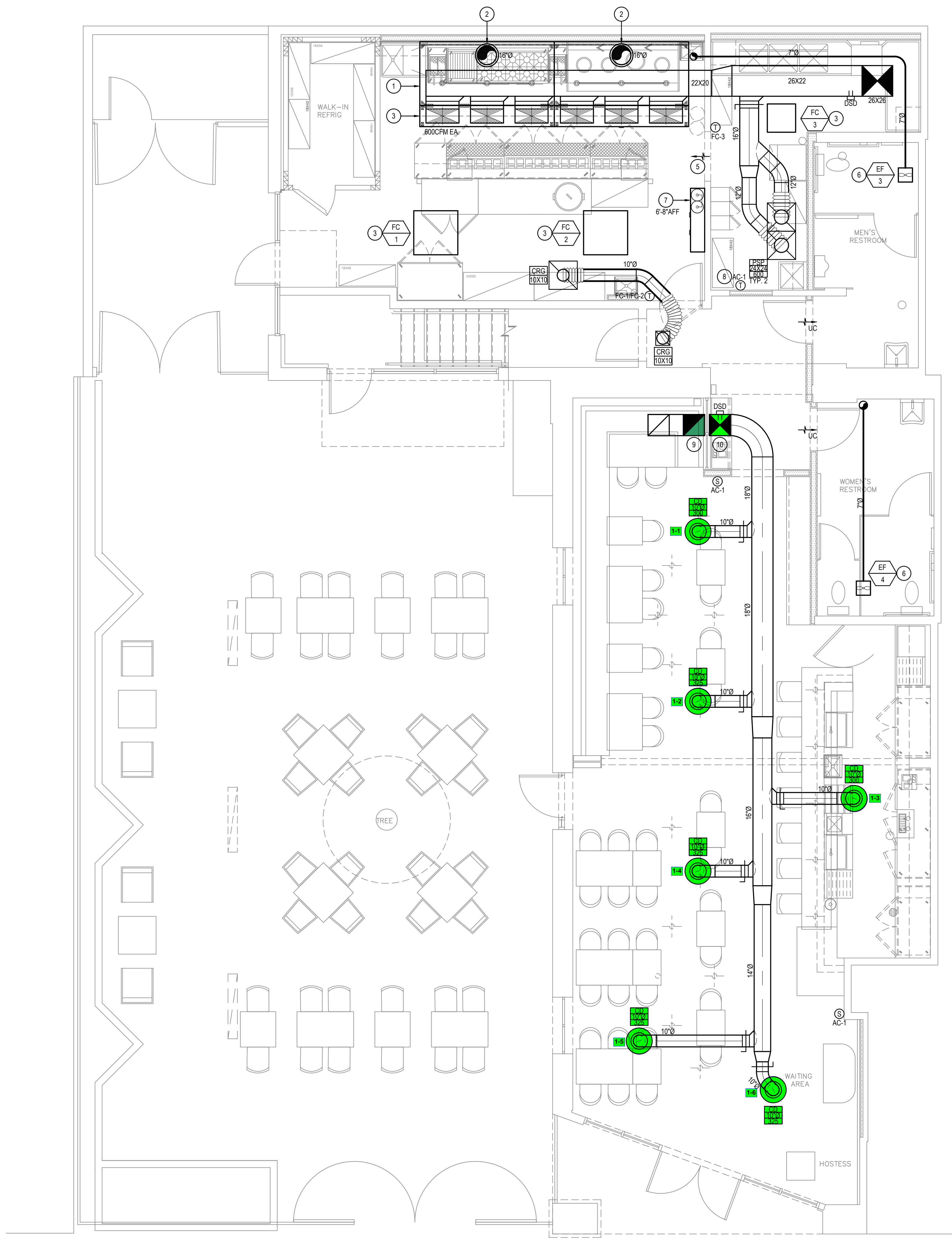
Function		Range	Minimum Accuracy	Instrument Information	Calibration Date	Date Due
AIR	AIR PRESSURE	0 in wg to 10 in wg	2% +/- 0.001 in wg	Evergreen S-PVF-1 S/N 25D-00848	12/11/2025	12/11/2026
	AIR VELOCITY INSTRUMENT	50 fpm to 3900 fpm	+/- 5 % +/- 7 fpm	Evergreen S-PVF-1 S/N 25D-00848	12/11/2025	12/11/2026
	DIRECT HOOD READING	100 cfm to 2000 cfm	+/- 3 % +/- 7 cfm	Evergreen 15D Flow Hood	12/11/2025	12/11/2026
TEMPERATURE	AIR METER	-20 F to 240 F	+/- .5 % 2 F	Cooper ATKINS - SRH77A S/N 081820093	9/30/2025	9/30/2026
	AIR PROBE	-20 F to 240 F	+/- .5 % 2 F	Cooper ATKINS - PD1388 7-6 S/N 5028	9/30/2025	9/30/2026
	IMMERSION METER	-20 F to 240 F	+/- .5 % 2 F	Cooper ATKINS - SRH77A S/N 081820093	9/30/2025	9/30/2026
	IMMERSION PROBE	-20 F to 240 F	+/- .5 % 2 F	Cooper ATKINS - PD1388 7-6 S/N 1075	9/30/2025	9/30/2026
	CONTACT METER	-20 F to 240 F	+/- .5 % 2 F	Cooper ATKINS - SRH77A S/N 081820093	9/30/2025	9/30/2026
	CONTACT PROBE	-20 F to 240 F	+/- .5 % 2 F	Cooper ATKINS - PD1388 7-6 S/N 4011	9/30/2025	9/30/2026
HUMIDITY	HUMIDITY PROBE	10 % RH to 90 % RH	3% of reading	Cooper ATKINS - SRH77A S/N 090315046	9/30/2025	9/30/2026
ELECTRICAL	VOLTAGE MEASUREMENT	0 VAC to 600 VAC	2 % reading +/- 5 digits	Dwyer CM-1 - S/N 190800099	9/30/2025	9/30/2026
	AMPERAGE MEASUREMENT	0 Amperers to 100 Amperes	2 % reading +/- 5 digits	Dwyer CM-1 - S/N 190800099	9/30/2025	9/30/2026
ROTATION	ROTATION MEASUREMENT	60 rpm to 5000 rpm	2 % reading 2 rpm	Dwyer TAC-L - S/N S1100123	9/30/2025	9/30/2026
HYDRONIC	PRESSURE MEASUREMENT	-30 in Hg to 200 psi	±2% of reading +/- 1 psi	Shortridge HDM 250 - S/N W25059	6/18/2025	6/18/2026
	DIFFERENTIAL PRESSURE MEASUREMENT	0 psi - 80 psi	±2% of reading +/- 1 psi	Shortridge HDM 250 - S/N W25059	6/18/2025	6/18/2026

Abbreviation List

A = Area (ft ²)	S.F. = Service Factor
AHU = Air Handling Unit	SF = Supply Fan
A _k = Effective Area	SP = Static Pressure
BHP = Brake Horsepower (IP) HP	SR = Supply Register
Btu = British Thermal Unit	T = Temperature
Btu/h = Btuh = BTUH = BTU/Hour	T _{ma} = Mixed Air Temperature
CL = Center Distance (used in belt formula)	T _{oa} = Outside Air Temperature
CD = Ceiling Diffuser	T _{ra} = Return Air Temperature
CF = Correction Factor	H = Head (in wc, ft wc, psi)
CFM = Volumetric Flow: Cubic Feet Per Minute	h = Enthalpy
CO ₂ = Carbon Dioxide	HP = Horsepower
CO = Carbon Monoxide	hr = Hour
C _v = Flow Constant	K _v = Flow constant (SI)
d = Diameter (in.) IP	kW = Kilowatt = 1000 Watts
Δ = Difference or Change (Final - Initial)	LAT = Leaving Air Temperature
DB = Dry Bulb	lb = Pounds
EA = Exhaust Air	LWT = Leaving Water Temperature
EAT = Entering Air Temperature	ma = Mixed Air
EF = Exhaust Fan	MIN = Minimum
Eff = Efficiency	MAX = Maximum
EG = Exhaust Grille	N/A = Not Applicable
ESP = External Static Pressure	NA = No Access
EWT = Entering Water Temperature	NL = Not Listed
°F = Degrees Fahrenheit, °F	NPSHA = Net Positive Suction Head Available
FPB = Fan Powered Box	NS = Not Specified
FLA = Full Load Amps	OA = Outside Air
fpm = Feet per Minute (fpm)	OAT = Outside Air Temperature
ft = Foot	PD = Sheave Pitch Diameter
gal = Gallons	P.D. = Pressure Drop
GPM = Gallons Per Minute (GPM)	PF = Power Factor
h = Enthalpy (BTU/lb dry air)	SG = Supply Grille
P = Pressure	SR = Supply Register
ppm = parts per million	TP = Total Pressure
psi = Pounds Per Square Inch	T _{ra} = Return Air Temperature
psid = PSI Differential	TS = Tip Speed (fpm) IP, (m/s) SI
r = Radius (in)	TSP = Total Static Pressure
% _{ra} = % of Return Air	V = Velocity
RA = Return Air	VAV = Variable Air Volume
RAT = Return Air Temperature	VD = Volume Damper
RF = Return Fan	VFD = Variable Frequency Drive
RG = Return Grille	W = Watt
RH = Relative Humidity	WB = Wet Bulb
RPM = Revolutions Per Minute	wg = wc = water gauge = water column
RTU = Roof Top Unit	WHP = Water Horsepower (IP)
SA = Supply Air	ω = Humidity Ratio

KEYED NOTES:

- 1 TYPE 1 HOOD OVER COOKING EQUIPMENT. MECHANICAL CONTRACTOR TO PROVIDE AND INSTALL. VERIFY FINAL DUCT COLLAR LOCATIONS WITH STRUCTURE PRIOR TO ORDER. PROVIDE CAPTIVEAIRE DOUBLE-WALL FACTORY-BUILT GREASE DUCT FROM THE HOOD COLLAR THROUGH ROOF TO EXHAUST FANS.
- 2 ALL GREASE EXHAUST DUCTWORK SHALL BE FACTORY BUILT DOUBLE-WALL GREASE DUCT WITH 2590 CLEARANCE TO COMBUSTIBLES. CLEANOUTS SHALL BE PROVIDED AT SIDES OR TOP OF DUCT, WHICHEVER IS MORE ACCESSIBLE AND CHANGES IN DIRECTION PER CMCS10.
- 3 CAPTIVEAIRE PSP SUPPLY PLENUM AT FACE OF HOOD. PROVIDE WITH MAKEUP AIR DUCT ABOVE HOOD WITH DUCT TAPS. BALANCE EACH DUCT TAP TO AIRFLOW SHOWN WITH FACTORY BALANCE DAMPERS. PROVIDE WITH SHEET METAL PANEL AT FACE OF PSP TO FORM SOFFIT TO CEILING. ALL DUCTWORK TO BE CONCEALED ABOVE CEILING / HOOD.
- 4 4-WAY BLOW CEILING CASSETTE SUSPENDED FROM STRUCTURE AT 1-BAR CEILING. INSTALL A MIN. OF 7FT AWAY FROM KITCHEN EXHAUST HOOD. SEE PLGS FOR CONDENSATE.
- 5 KITCHEN TRANSFER AIR THROUGH OPENING BETWEEN DISH AREA AND KITCHEN.
- 6 CEILING MOUNT EXHAUST FAN. PROVIDE 75 EXHAUST DUCT. OFFSET ABOVE CEILING AND RUN THROUGH SECOND LEVEL TO ROOF. TERMINATE AT ROOF WITH ROOF CAP AND BUGSCREEN.
- 7 TYPE 1 HOOD FIRE SUPPRESSION CONTROL PANEL. REMOTE MOUNT BELOW CEILING. INSTALL PER MANUFACTURERS REQUIREMENTS. MAINTAIN 3FT CLEARANCE IN FRONT. COORDINATE WITH ELECTRICIAN.
- 8 PROVIDE WALL MOUNT CONTROLLER FOR AC-1 WITH REMOTE TEMP SENSOR. SEE PLANS FOR LOCATIONS.
- 9 18X18 RETURN AIR DUCT FROM ABOVE. OFFSET HORIZONTALLY AND TERMINATE WITH ELBOW UP FOR RETURN. PAINT ALL DUCTWORK MATTE BLACK. COORDINATE HEIGHT AND FINISH WITH GC.
- 10 18X18 SUPPLY AIR DUCT PLENUM FROM ABOVE. TRANSITION TO 18"Ø AND RUN HIGH. PAINT ALL DUCTWORK MATTE BLACK. COORDINATE HEIGHT AND FINISH WITH GC.



1 MECHANICAL GROUND FLOOR PLAN
1/4" = 1'-0"

**MUST BE THAI
AND BAR**
18 N. SAN PEDRO ST.
SAN JOSE, CA 95113

ISSUE	DESCRIPTION	DATE
PERMIT		04 22, 24

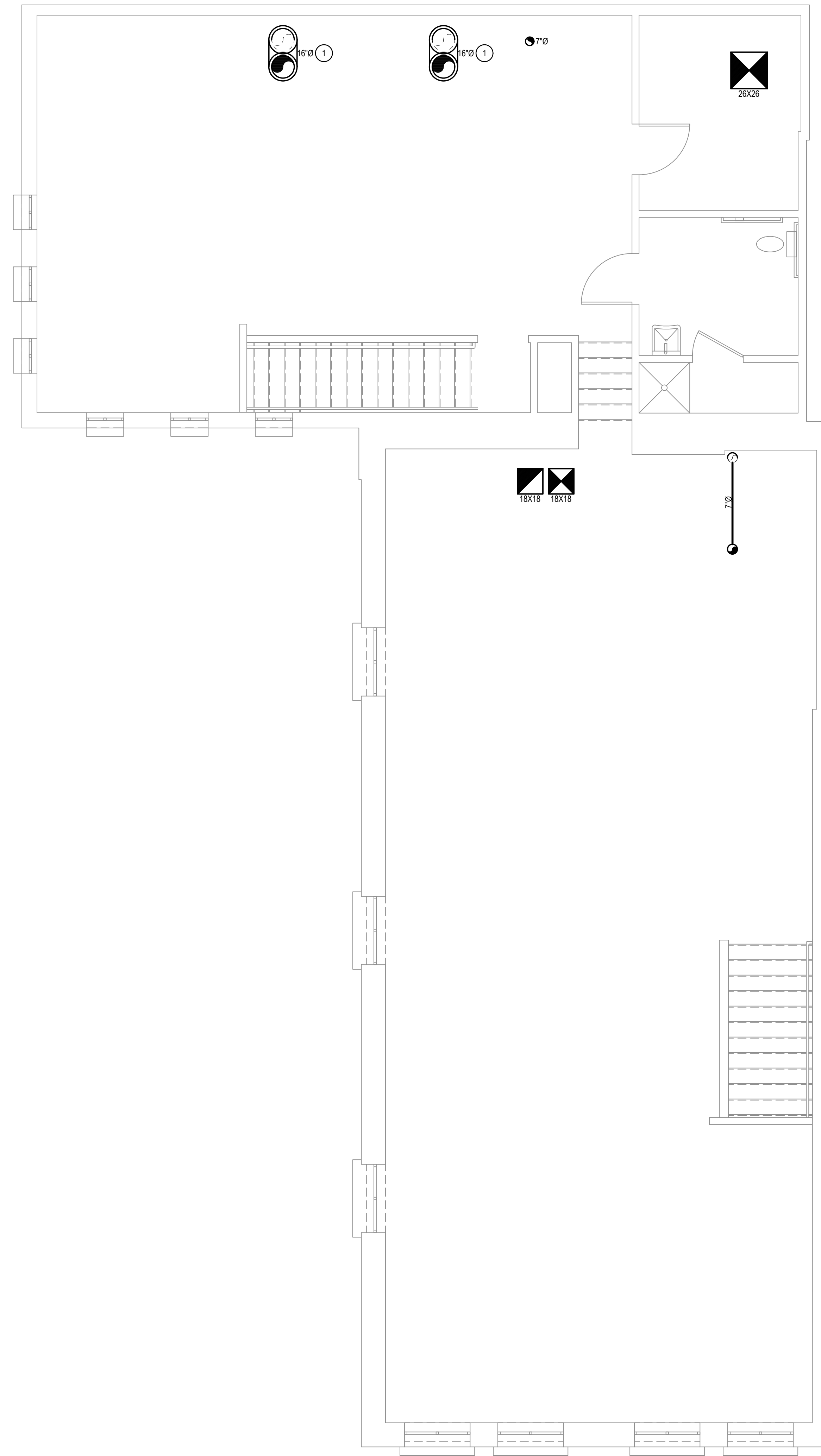


DATE: APRIL 24, 2024
DRAWN BY: NC CHECK: SL
JOB NO: SCALE: AS NOTED

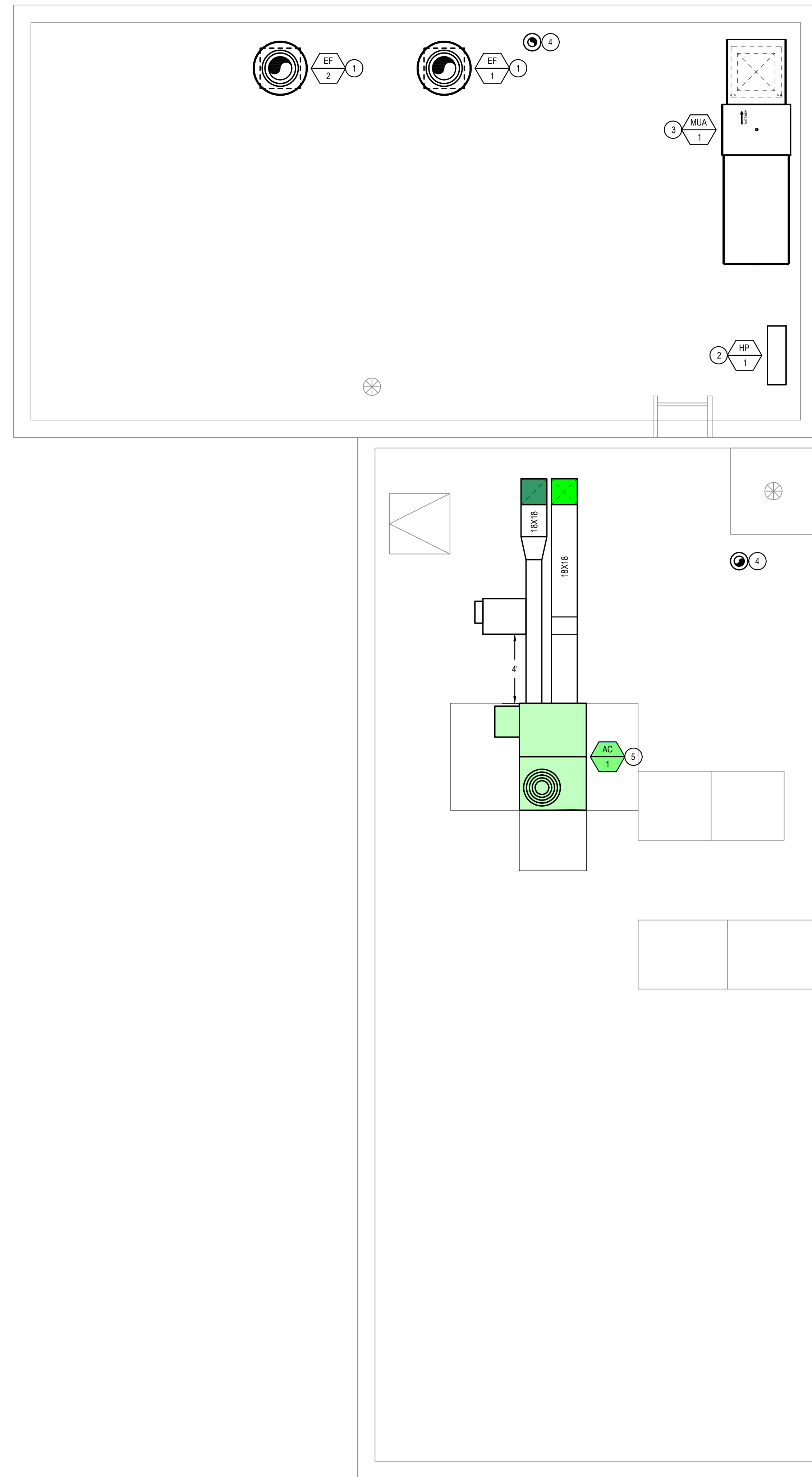
MECHANICAL
GROUND FLOOR
PLAN

TITLE:
M2.1

SHEET:



2 MECHANICAL SECOND FLOOR PLAN
1/4" = 1'-0"



1 MECHANICAL ROOF PLAN
3/8" = 1'-0"

KEYED NOTES:

- 1 KITCHEN UPBLAST EXHAUST FAN OVER FACTORY HINGED ROOF CURB FOR TOP CLEANOUT ACCESS. RIM OF DISCHARGE SHALL BE A MIN. OF 4" FROM ROOF DECK OR PARAPET WALL (CMC510.9.18(b)). CONNECT TO DOUBLE-WALL FACTORY GREASE DUCT AT CURB. SEE LEVEL BELOW FOR CONTINUATION.
- 2 HEAT PUMP ON ROOF CURB THROUGH NEOPRENE SOLATORS. INSTALL PER MANUFACTURERS REQUIREMENTS. RUN LINESETS THROUGH SECOND LEVEL TO FAN COILS AT GROUND LEVEL. SEE PIPING AND WIRING DIAGRAMS.
- 3 MAKEUP AIR UNIT ON FACTORY CURB. INSTALL PER MANUFACTURER REQUIREMENTS WITH SIDE ACCESS. COORDINATE MAKEUP WATER AND DRAIN WITH PLUMBER.
- 4 BATHROOM EXHAUST ROOF CAP WITH BUGSCREEN.
- 5 ROOFTOP UNIT OVER FACTORY CURB WITH NEOPRENE SOLATORS. INSTALL PER MANUFACTURERS REQUIREMENTS. PROVIDE WITH FLEXIBLE DUCT CONNECTIONS AND LINED INTAKE AND DISCHARGE FULL SIZE OF UNIT OPENINGS. PROVIDE HORIZONTAL STRAIGHT DUCT RUNS FOR FIRST 4FT.

**MUST BE THAI
AND BAR**

18 N. SAN PEDRO ST.
SAN JOSE, CA 95113

ISSUE	DESCRIPTION	DATE
PERMIT		04 22, 24



DATE: APRIL 24, 2024
DRAWN BY: NC CHECK: SL
JOB No: SCALE: AS NOTED

MECHANICAL
SECOND FLOOR AND
ROOF PLANS

TITLE:
SHEET: **M2.2**



National TAB

Project: Must Be Thai And Bar (San Jose, CA)

System/Unit: AHU/RTU



Asset: AC-1

AREA:DINING

Unit Data	
	Actual
MFG	CARRIER
Serial Num	2625C07974
Model Num	50FEQA06A3A5A0A0A0
Configuration	VERTICAL
Num OA Filters 1	1
Num Final Filter 1	4
Final Filter Size 1	16X16X

Motor Data	
	Actual
Motor MFG	NL
Frame	NL
Horsepower	2.4
Motor Rpm	NL
Phase	3
Rated Voltage	208
Rated Amperage	6.5
Service Factor	1.0

Test Data		
	Design	Actual
SF CFM	1900	1925
SF RPM	-	2259
RA CFM	1300	1322
OA CFM	600	603
RL Voltage	208	207/207/207
RL Amperage	6.5	3.3/3.3/3.3
SF System SetPt	-	6.5VDC
OA Damper Position	-	33%
Brake Horse Power	0.78	1.21

Performance Data		
	Design	Actual
Fan Suction SP	-	-0.51"
Fan Discharge SP	-	0.43"
Total ESP	0.6	0.75"
Fan Total SP	-	0.94"

Completed By: Zack Eismin on 01/26/2026

Unit Data - PHOTO LOG



01/26/2026

National TAB

Project: Must Be Thai And Bar (San Jose, CA)

AHU/RTU



Diffuser Supply (GRD)

AC-1/DINING

Asset							
Asset Name	Location	Type	Size	DESIGN CFM	CFM(1)	FINAL CFM	% to design
1-1	DINING	CD	10	300	304	311	103.7
1-2	DINING	CD	10	325	230	329	101.2
1-3	DINING	CD	10	300	244	303	101.0
1-4	DINING	CD	10	325	328	334	102.8
1-5	DINING	CD	10	325	369	311	95.7
1-6	DINING	CD	10	325	468	337	103.7
Total				1900	1943	1925	101.32%

Completed By: Zack Eismín on 01/26/2026