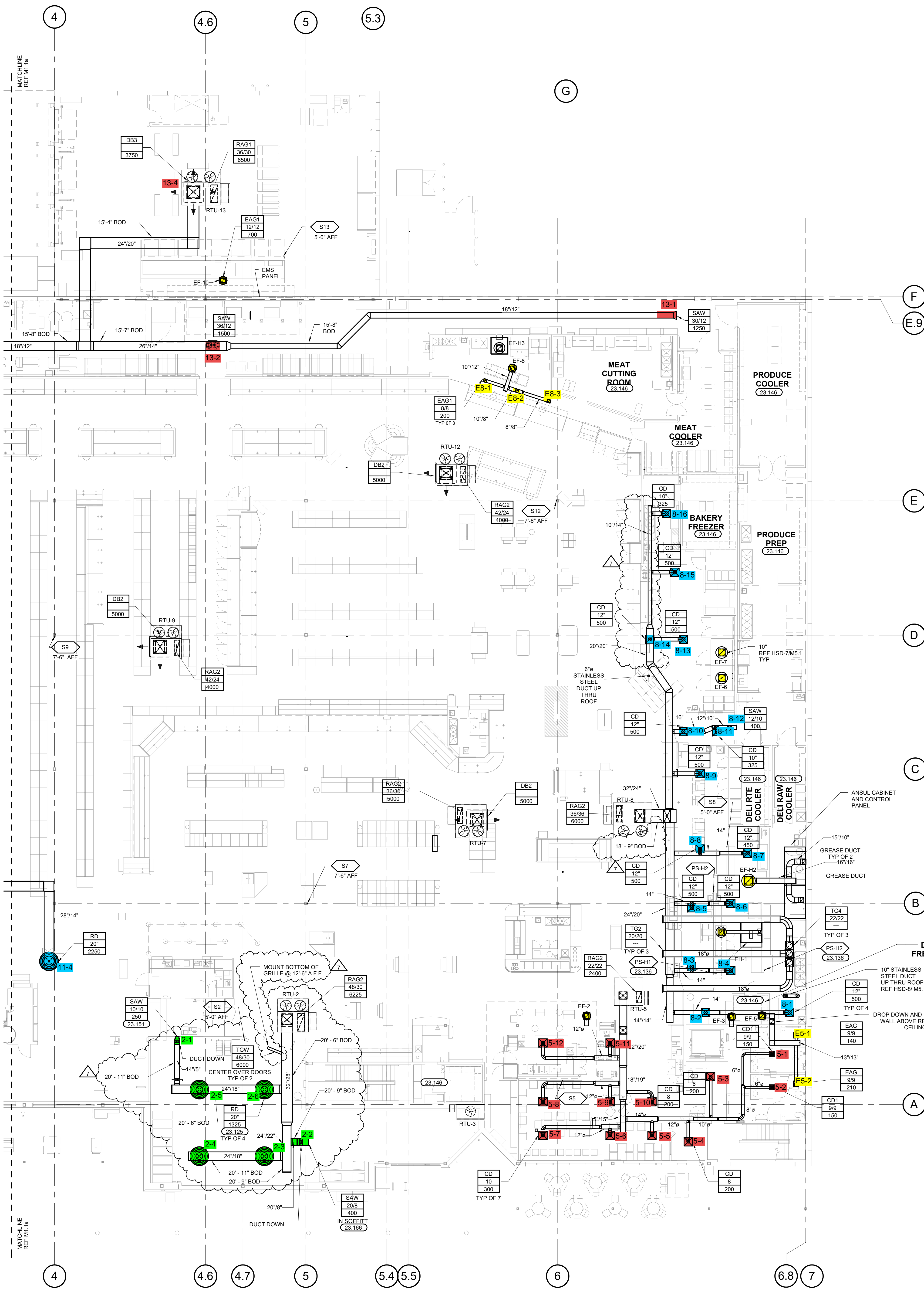


KEYNOTES	
23.125	MOUNT TOP OF DIFFUSER EVEN WITH LIGHTING IN AREA. REFER TO ELECTRICAL LIGHTING PLANS FOR LIGHTING MOUNTING HEIGHT.
23.136	HOOD ANSUL PULL STATION LOCATION. PROVIDE NAMEPLATE AT STATION WITH HOOD NUMBER AND LOCATION. MOUNT AT 48" AFF.
23.146	MOUNT TOP OF AIR DEVICE AT 6'-0" AFF. AIR DEVICE TO HAVE FACE-OPERABLE VOLUME DAMPER. PROVIDE ACCESS PANELS WHERE DAMPERS MUST BE INSTALLED ABOVE NON-ACCESSIBLE CEILING.
23.151	MOUNT TOP OF AIR DEVICE AT 6'-0" AFF. AIR DEVICE TO HAVE FACE-OPERABLE VOLUME DAMPER. PROVIDE ACCESS PANELS WHERE DAMPERS MUST BE INSTALLED ABOVE NON-ACCESSIBLE CEILING.
23.166	SUPPLY REGISTER TO BE MOUNTED IN MART CART SOFFIT.

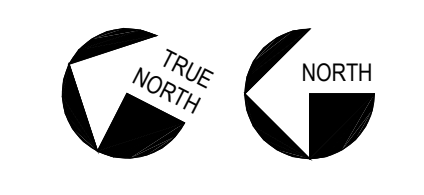
- ### GENERAL NOTES
- REFER TO ARCHITECTURAL AND STRUCTURAL DRAWINGS FOR EXACT LOCATIONS OF ROOFTOP EQUIPMENT.
  - REFER TO HEATING, VENTILATING & AIR CONDITIONING SPECIFICATIONS AND GENERAL CONDITIONS FOR ADDITIONAL REQUIREMENTS. DRAWING PROVIDE ACCESS PANELS WHERE DAMPERS MUST BE INSTALLED ABOVE NON-ACCESSIBLE CEILING.
  - REFER TO ENERGY MANAGEMENT DRAWINGS FOR EQUIPMENT CONTROLS NOT SHOWN ON HVAC DRAWINGS.
  - LIGHT FIXTURE LOCATIONS TAKE PRECEDENCE OVER DIFFUSER AND GRILLE LOCATIONS. LOCATE DIFFUSERS AND GRILLES TO ACCOMMODATE LIGHTING LAYOUT. DO NOT INSTALL DUCTWORK OR EQUIPMENT DIRECTLY UNDER SKYLIGHT WELLS UNLESS DIMENSIONED OTHERWISE ON PLANS.
  - TYPICAL BRANCH DUCT FITTING DETAIL IS APPLICABLE THROUGHOUT THE STORE.
  - SUPPLY AND RETURN DUCTWORK FROM ROOFTOP TO BE INTERNALLY INSULATED A MINIMUM OF 10 FT FOR SOUND ATTENUATION.
  - HOODS SHALL OVERHANG EQUIPMENT BELOW BY A MINIMUM 6" ON ALL EXPOSED SIDES, EXCLUDING ANY ANSUL CABINETS OR MAKEUP AIR PLENUMS.
  - PROVIDE BALANCING DAMPERS FOR EACH DIFFUSER, REGISTER AND GRILLE AT POINTS ON SUPPLY, RETURN, AND EXHAUST SYSTEMS WHERE BRANCHES LEAD OFF FROM LARGER DUCTS OR IN DIFFUSERS AS REQUIRED FOR AIR BALANCING. INSTALL A MINIMUM OF TWO DUCT WIDTHS FROM BRANCH TAKEOFF UNLESS SHOWN OTHERWISE ON DRAWING. PROVIDE ACCESS PANELS WHERE DAMPERS MUST BE INSTALLED ABOVE NON-ACCESSIBLE CEILING.
  - PROVIDE TURNING VANES IN ALL RECTANGULAR MITERED ELBOWS.
  - ROUND TOES TO CEILING DIFFUSERS ARE THE SAME SIZE AS THE DIFFUSER NECK UNLESS NOTED OTHERWISE.
  - ONLY ITEMS REQUIRED FOR THE OPERATION OF THE ELEVATOR SHALL BE IN OR PASS THROUGH THE ELEVATOR EQUIPMENT ROOM.
  - INSTALL FLUES A MINIMUM OF 8 FT FROM ROOF EDGE AND/OR PARAPET WALLS. INSTALL FLUES AND EXHAUST FANS A MINIMUM OF 10 FT FROM OUTSIDE AIR INTAKE OF ROOF TOP UNITS. INSTALL EXHAUST FANS, MAKEUP AIR UNITS AND ROOF TOP UNITS A MINIMUM OF 10 FT FROM ROOF EDGE.

### MECHANICAL SYMBOLS

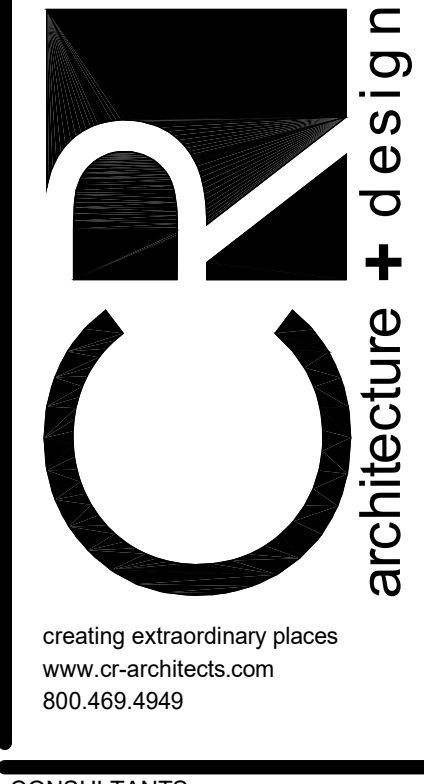
	RECTANGULAR DUCT 18" WIDE BY 12" DEEP
	12" DIAMETER ROUND DUCT
	SUPPLY DUCT IN SECTION
	RETURN OR EXHAUST DUCT IN SECTION
	ELBOW WITH TURNING VANES
	TEE WITH TURNING VANES
	RECTANGULAR RADIUS ELBOW
	ROUND (OR OVAL) ELBOW
	VOLUME CONTROL DAMPER
	SUPPLY AIR DIFFUSER WITH ROUND SUPPLY DUCT
	RETURN OR EXHAUST AIR DIFFUSER WITH ROUND DUCT
	DIFFUSER OR GRILL TYPE DUCT AND/OR NECK SIZE CFM
	THERMOSTAT
	TEMPERATURE/HUMIDITY SENSOR
	TEMP SENSOR
	HOOD ANSUL PULL STATION



1 HVAC PLAN - SOUTH  
3/32" = 1'-0"



CONTRACT: 6501 Vico Street, Suite 2710, Culverton, CA 92320, P: 615.721.8600  
 DESIGNER: 1819 Main Street, Denver, CO 80202, P: 303.863.8100  
 DALLAS: 750 North St. Paul Street, Dallas, TX 75201, P: 800.469.4949  
 SEATTLE: 2211 Elliott Ave., Suite 241, Seattle, WA 98121, P: 800.469.4949



CONSULTANTS  
 STIPULATION FOR REUSE  
 THIS DRAWING WAS PREPARED FOR USE ON A SPECIFIC SITE AT A SPECIFIC DATE OF ISSUANCE AND IS NOT SUITABLE FOR REUSE ON ANY OTHER PROJECT SITE ON A LATER DATE. THE USER OF THIS DRAWING FOR ANY REUSE OR REPRODUCTION OF THIS DRAWING FOR ANY OTHER PROJECT IS NOT AUTHORIZED AND MAY BE CONTRARY TO THE LAW.

CHECKED BY: DCZ  
 DRAWN BY: LPC

David P. Kimball  
 P.E.  
 SUITE 638 479-436-0000 800-321-8721  
 1818 N. 2ND ST. DENVER, CO 80202  
 ROOGERS, AR 72756 DESIGNED BY: LPC

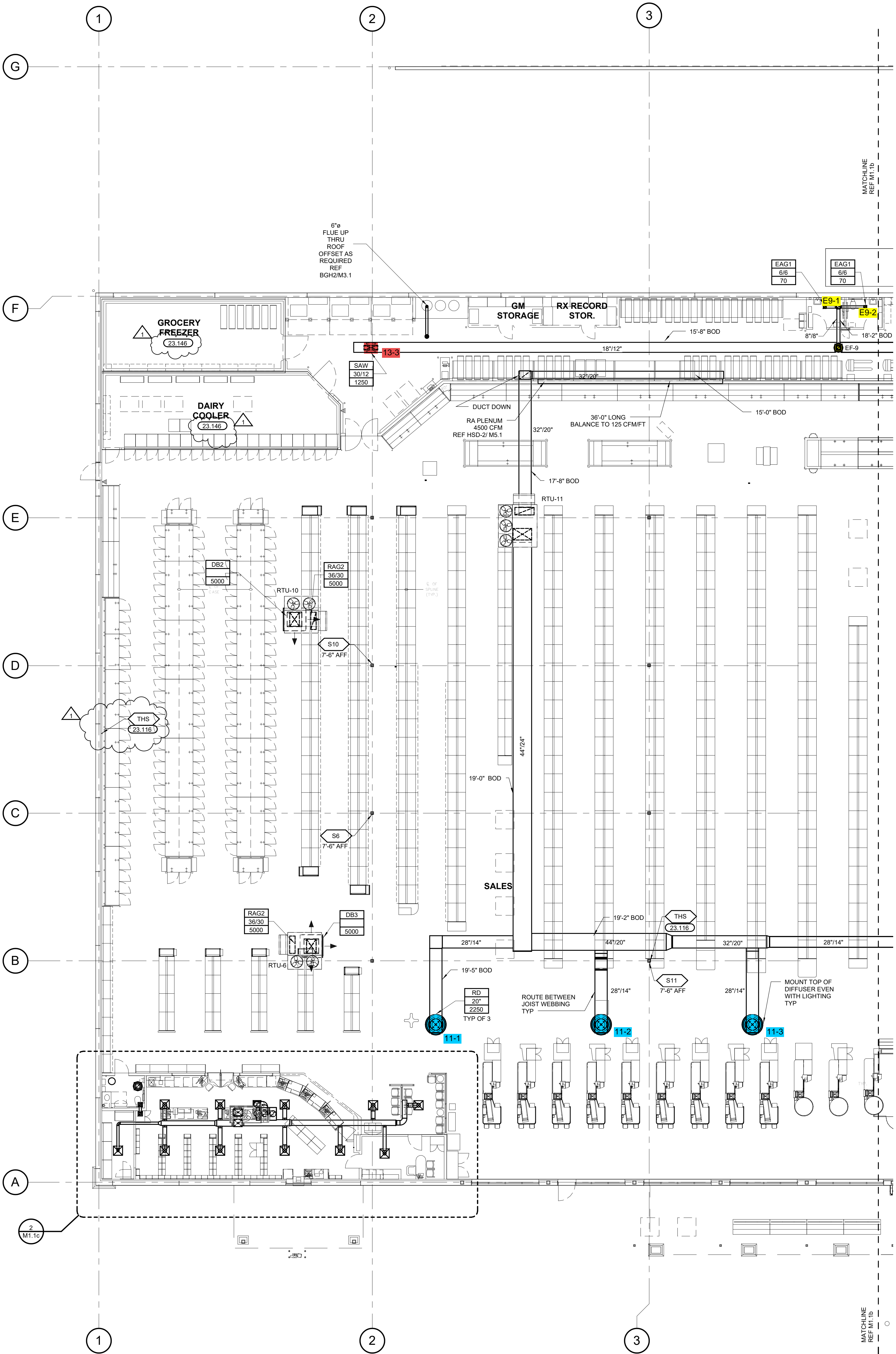
OWNER  
  
 ISSUE/REVISION  
 02/28/2015  
 90% PROGRESS REVIEW

1	ADDENDUM NO.1	04/24/15
7	BULLETIN NO.7	02/22/16

PROJECT TITLE  
**KROGER STORE SW532**  
 NEC N. Tarrant Parkway & Ray White Rd., Fort Worth, TX  
 COMMISSION NO. 515049  
 ISSUE DATE 09/09/16  
 SHEET TITLE  
**HVAC PLAN - SOUTH**

SHEET NO.  
**M1.1b**

THIS DOCUMENT IS THE PRODUCT AND EXCLUSIVE PROPERTY OF COLLETT-RUSSELL ARCHITECTS, INC. NEITHER THE DOCUMENT NOR THE INFORMATION IT CONTAINS MAY BE COPIED OR USED FOR OTHER THAN THE SPECIFIC PROJECT FOR WHICH IT WAS PREPARED WITHOUT THE EXPLICIT CONSENT OF COLLETT-RUSSELL ARCHITECTS, INC.  
 2/22/2016 2:34:45 PM



**GENERAL NOTES**

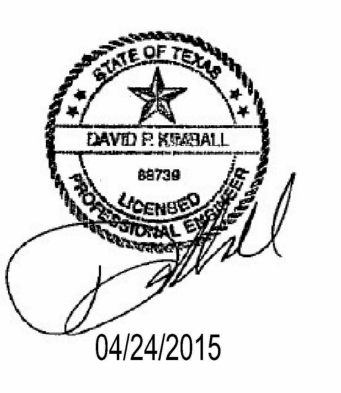
- REFER TO ARCHITECTURAL AND STRUCTURAL DRAWINGS FOR EXACT LOCATIONS OF ROOFTOP EQUIPMENT.
- REFER TO HEATING, VENTILATING & AIR CONDITIONING SPECIFICATIONS AND GENERAL CONDITIONS FOR ADDITIONAL REQUIREMENTS.
- REFER TO ENERGY MANAGEMENT DRAWINGS FOR EQUIPMENT CONTROLS NOT SHOWN ON HVAC DRAWINGS.
- LIGHT FIXTURE LOCATIONS TAKE PRECEDENCE OVER DIFFUSER AND GRILLE LOCATIONS. LOCATE DIFFUSERS AND GRILLES TO ACCOMMODATE LIGHTING LAYOUT. DO NOT INSTALL DUCTWORK OR EQUIPMENT DIRECTLY UNDER SKYLIGHT WELLS UNLESS DIMENSIONED OTHERWISE ON PLANS.
- TYPICAL BRANCH DUCT FITTING DETAIL IS APPLICABLE THROUGHOUT THE STORE.
- SUPPLY AND RETURN DUCTWORK FROM ROOFTOP UNITS TO BE INTERNALLY INSULATED A MINIMUM OF 10 FT FOR SOUND ATTENUATION.
- HOODS SHALL OVERHANG EQUIPMENT BELOW BY A MINIMUM 6" ON ALL EXPOSED SIDES, EXCLUDING ANY ANSUL CABINETS OR MAKEUP AIR PLENUMS.
- PROVIDE BALANCING DAMPERS FOR EACH DIFFUSER, REGISTER AND GRILLE AT POINTS ON SUPPLY, RETURN, AND EXHAUST SYSTEMS WHERE BRANCHES LEAD OFF FROM LARGER DUCTS OR IN DIFFUSERS AS REQUIRED FOR AIR BALANCING. INSTALL A MINIMUM OF TWO DUCT WIDTHS FROM BRANCH TAKEOFF UNLESS SHOWN OTHERWISE ON DRAWING. PROVIDE ACCESS PANELS WHERE DAMPERS MUST BE INSTALLED ABOVE NON-ACCESSIBLE CEILINGS.
- PROVIDE TURNING VANES IN ALL RECTANGULAR MITERED ELBOWS.
- RUNOUTS TO CEILING DIFFUSERS ARE THE SAME SIZE AS THE DIFFUSER NECK UNLESS NOTED OTHERWISE.
- ONLY ITEMS REQUIRED FOR THE OPERATION OF THE ELEVATOR SHALL BE IN OR PASS THROUGH THE ELEVATOR EQUIPMENT ROOM.
- INSTALL FLUES A MINIMUM OF 8 FT FROM ROOF EDGE AND/OR PARAPET WALLS. INSTALL FLUES AND EXHAUST FANS A MINIMUM OF 10 FT FROM OUTSIDE AIR INTAKE OF ROOF TOP UNITS. INSTALL EXHAUST FANS, MAKEUP AIR UNITS AND ROOF TOP UNITS A MINIMUM OF 10 FT FROM ROOF EDGE.

**MECHANICAL SYMBOLS**

	18"X12" RECTANGULAR DUCT 18" WIDE BY 12" DEEP
	12" 12" DIAMETER ROUND DUCT
	SUPPLY DUCT IN SECTION
	RETURN OR EXHAUST DUCT IN SECTION
	ELBOW WITH TURNING VANES
	TEE WITH TURNING VANES
	RECTANGULAR RADIUS ELBOW
	RECTANGULAR TEE
	ROUND (OR OVAL) ELBOW
	VOLUME CONTROL DAMPER
	SUPPLY AIR DIFFUSER WITH ROUND SUPPLY DUCT
	RETURN OR EXHAUST AIR DIFFUSER WITH ROUND DUCT
	DIFFUSER OR GRILL TYPE BRANCH DUCT AND/OR NECK SIZE CFM
	THERMOSTAT
	TEMPERATURE/HUMIDITY SENSOR
	TEMP SENSOR
	HOOD ANSUL PULL STATION

**KEYNOTES**

- 23.116 HUMIDITY/TEMPERATURE SENSOR FOR ROOF MOUNTED RTU FURNISHED BY BUILDING CONTROLS PROVIDER. INSTALL PROBE 7'-6" AFF ON COLLUM. ROUTE CONTROL WIRING BACK TO BUILDING CONTROL PANEL. REFER TO ELECTRICAL DETAILS FOR FURTHER INFORMATION. HUMIDITY SENSOR OVER FROZEN CASES IS FOR ANTI-SWEATS ONLY.
- 23.146 INSTALL OWNER PROVIDED REFRIGERANT LEAK DETECTION DEVICE AND WARNING PLACARD. EXTERNALLY MOUNT AUDIBLE/ VISIBLE WARNING SIGNAL.

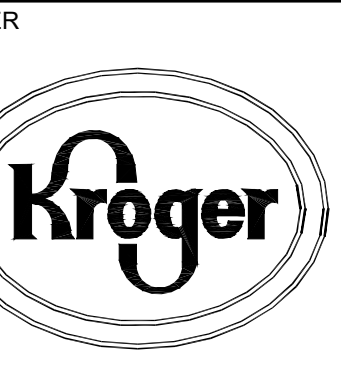
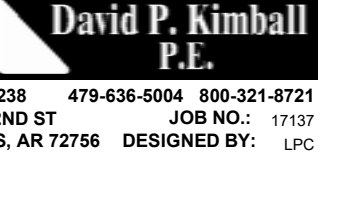


CONTRACT: 8501 Vico Street, Suite 2070, Culverton, CA 92520, P: 613.727.6800  
 DESIGNER: 1810 Phelan Street, Denver, CO 80202, P: 303.863.8100  
 DALLAS: 7501 North St. Paul Street, Dallas, TX 75201, P: 800.469.4949  
 SEATTLE: 2211 Elliott Ave., Suite 241, Seattle, WA 98121, P: 800.469.4949



CONSULTANTS  
 STIPULATION FOR REUSE  
 THIS DRAWING WAS PREPARED FOR USE ON A SPECIFIC SITE AT 4:00 PM, 03/27/2015. IT IS NOT SUITABLE FOR USE ON ANY OTHER PROJECT SITE OR AT A LATER TIME. USE OF THIS DRAWING FOR REPRODUCTION OR REPRODUCTION OF THIS DRAWING FOR REUSE ON ANOTHER PROJECT IS NOT AUTHORIZED AND MAY BE CONTRARY TO THE LAW.

CHECKED BY: DCZ  
 DRAWN BY: LPC



ISSUE/REVISION: 01/12/2015  
 90% PROGRESS REVIEW  
 03/27/2015 BID/PERMIT ISSUE

1 BULLETIN NO.1 04/24/15

PROJECT TITLE  
**KROGER STORE**

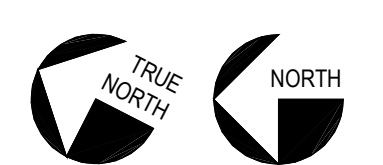
NEC N. Tarrant Parkway & Ray White Rd, Fort Worth, TX

COMMISSION NO. 514501.03  
 ISSUE DATE 03/27/15

SHEET TITLE  
**HVAC PLAN - NORTH**

SHEET NO.  
**M1.1a**

**1 HVAC PLAN - NORTH**  
 3/32" = 1'-0"



THIS DOCUMENT IS THE PRODUCT AND EXCLUSIVE PROPERTY OF COLLETT-RUSSELL ARCHITECTS, INC. NEITHER THE DOCUMENT NOR THE INFORMATION IT CONTAINS MAY BE COPIED OR USED FOR OTHER THAN THE SPECIFIC PROJECT FOR WHICH IT WAS PREPARED WITHOUT THE EXPLICIT CONSENT OF COLLETT-RUSSELL ARCHITECTS, INC.  
 4/24/2015 2:28:22 PM