

KEYNOTES

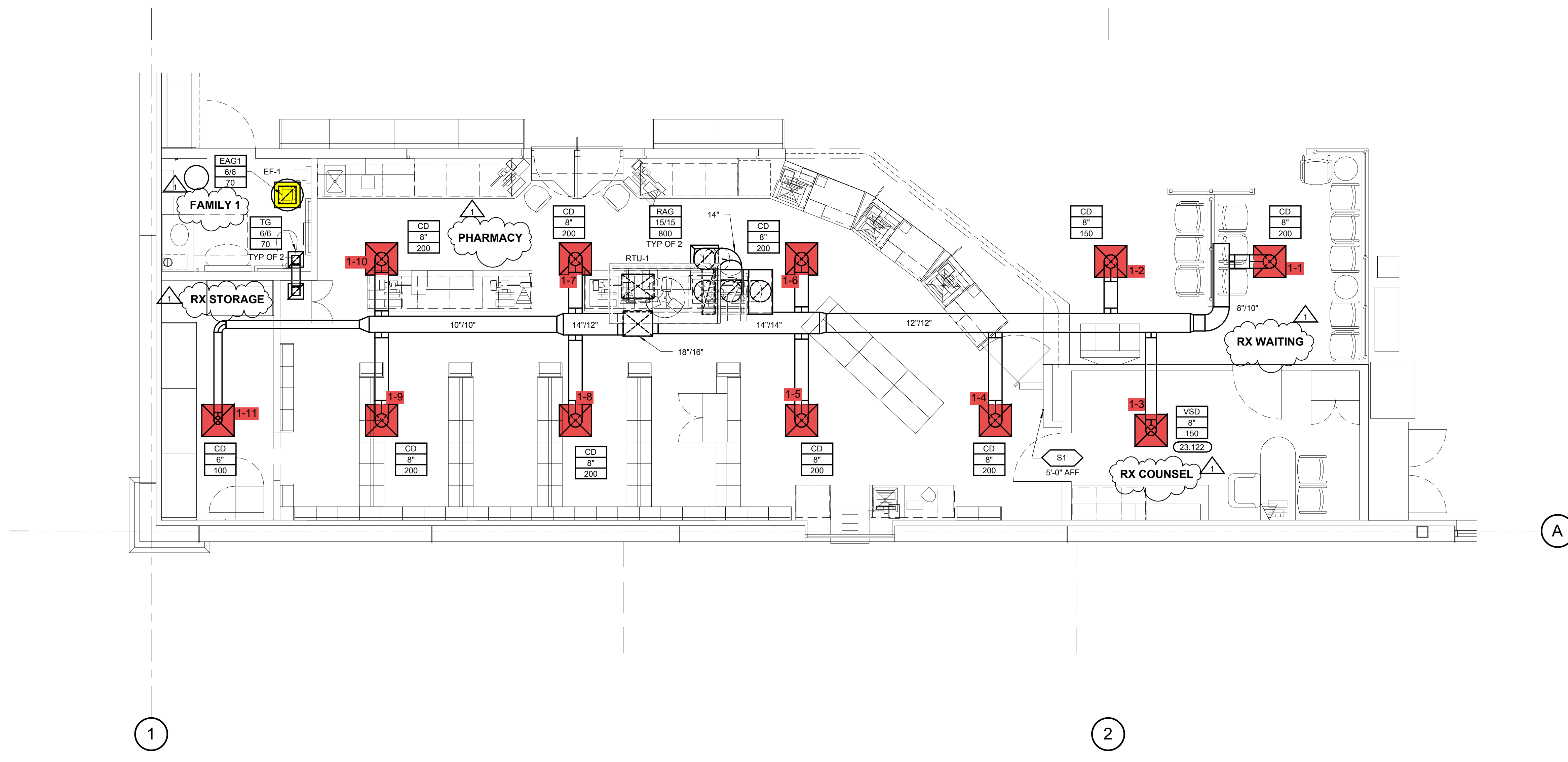
- 23.122 MECHANICAL CONTRACTOR TO PROVIDE WAV DIFFUSER, ACCUTHERM THERMA-FUSE MODEL TF-HC OR EQUIVALENT.
- 23.123 KROGER FURNISHED SPLIT SYSTEM PROVIDED WITH LOW AMBIENT KIT AND WIND BAFFLES. MOUNT ON WALL PER MANUFACTURERS RECOMMENDATIONS. ROUTE REFRIGERANT LINES THRU ROOF TO CONDENSING UNIT PER MANUFACTURERS GUIDELINES. ROUTE 3/4" INSULATED CONDENSATE TO HUB DRAIN IN AREA. REFER TO DETAIL HSD-11

GENERAL NOTES

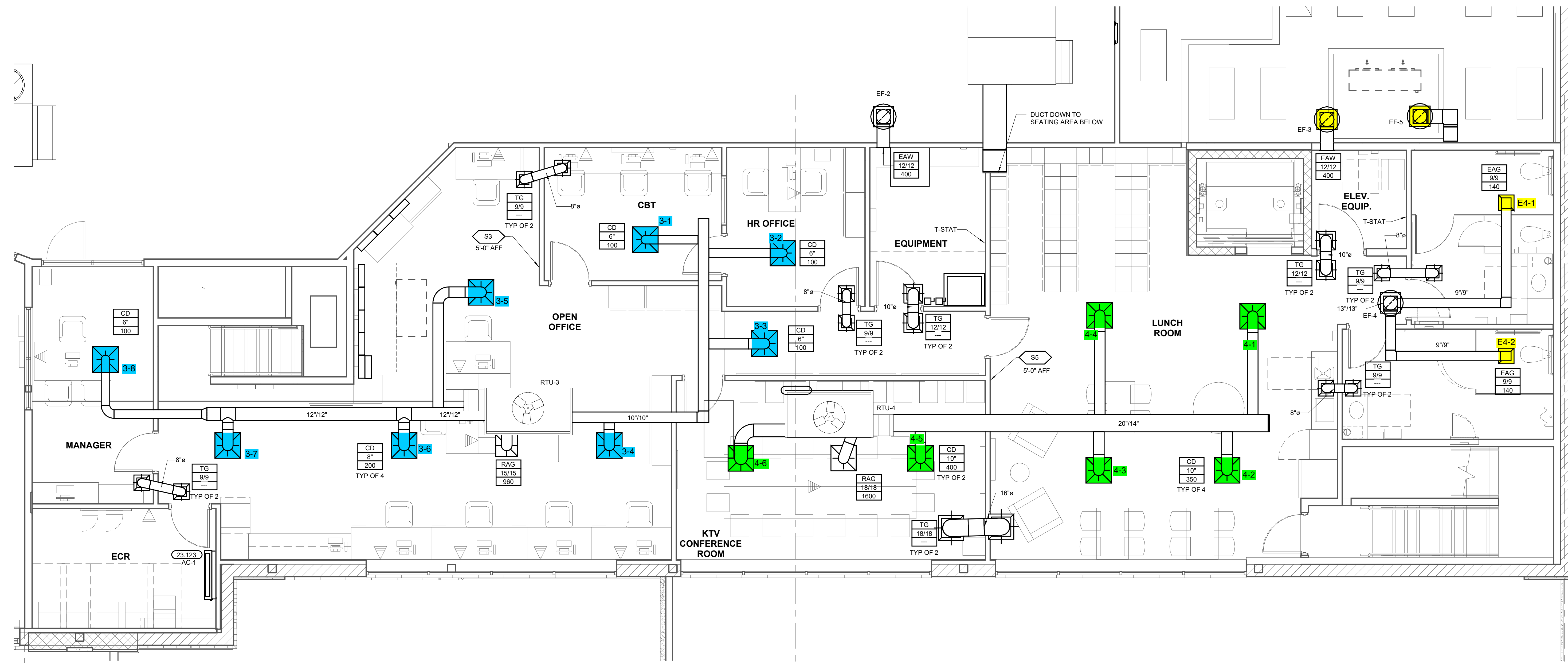
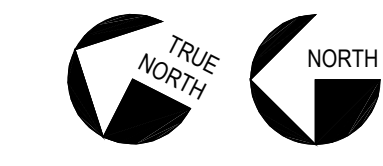
1. REFER TO ARCHITECTURAL AND STRUCTURAL DRAWINGS FOR EXACT LOCATIONS OF ROOFTOP EQUIPMENT.
2. REFER TO HEATING, VENTILATING & AIR CONDITIONING SPECIFICATIONS AND GENERAL CONDITIONS FOR ADDITIONAL REQUIREMENTS.
3. REFER TO ENERGY MANAGEMENT DRAWINGS FOR EQUIPMENT CONTROLS NOT SHOWN ON HVAC DRAWINGS.
4. LIGHT FIXTURE LOCATIONS TAKE PRECEDENCE OVER DIFFUSER AND GRILLE LOCATIONS. LOCATE DIFFUSERS AND GRILLES TO ACCOMMODATE LIGHTING LAYOUT. DO NOT INSTALL DUCTWORK OR EQUIPMENT DIRECTLY UNDER SKYLIGHT WELLS UNLESS DIMENSIONED OTHERWISE ON PLANS.
5. TYPICAL BRANCH DUCT FITTING DETAIL IS APPLICABLE THROUGHOUT THE STORE.
6. SUPPLY AND RETURN DUCTWORK FROM ROOFTOP UNITS TO BE INTERNALLY INSULATED A MINIMUM OF 10 FT FOR SOUND ATTENUATION.
7. HOODS SHALL OVERHANG EQUIPMENT BELOW BY A MINIMUM 6" ON ALL EXPOSED SIDES, EXCLUDING ANY ANSUL CABINETS OR MAKEUP AIR PLENUMS.
8. PROVIDE BALANCING DAMPERS FOR EACH DIFFUSER, REGISTER AND GRILLE AT POINTS ON SUPPLY, RETURN, AND EXHAUST SYSTEMS WHERE BRANCHES LEAD OFF FROM LARGER DUCTS OR IN DIFFUSERS AS REQUIRED FOR AIR BALANCING. INSTALL A MINIMUM OF TWO DUCT WIDTHS FROM BRANCH TAKEOFF UNLESS SHOWN OTHERWISE ON DRAWING. PROVIDE ACCESS PANELS WHERE DAMPERS MUST BE INSTALLED ABOVE NON-ACCESSIBLE CEILING.
9. PROVIDE TURNING VANES IN ALL RECTANGULAR MITERED ELBOWS.
10. RUNOUTS TO CEILING DIFFUSERS ARE THE SAME SIZE AS THE DIFFUSER NECK UNLESS NOTED OTHERWISE.
11. ONLY ITEMS REQUIRED FOR THE OPERATION OF THE ELEVATOR SHALL BE IN OR PASS THROUGH THE ELEVATOR EQUIPMENT ROOM.
12. INSTALL FLUES A MINIMUM OF 8 FT FROM ROOF EDGE AND/OR PARAPET WALLS. INSTALL FLUES AND EXHAUST FANS A MINIMUM OF 10 FT FROM OUTSIDE AIR INTAKE OF ROOF TOP UNITS. INSTALL EXHAUST FANS, MAKEUP AIR UNITS AND ROOF TOP UNITS A MINIMUM OF 10 FT FROM ROOF EDGE.

MECHANICAL SYMBOLS

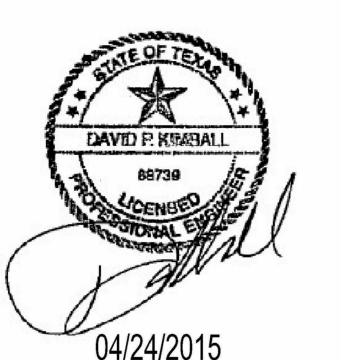
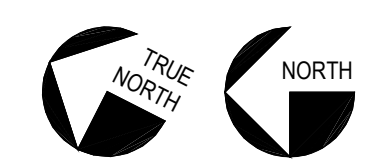
	RECTANGULAR DUCT 18" WIDE BY 12" DEEP
	12" DIAMETER ROUND DUCT
	SUPPLY DUCT IN SECTION
	RETURN OR EXHAUST DUCT IN SECTION
	ELBOW WITH TURNING VANES
	TEE WITH TURNING VANES
	RECTANGULAR RADIUS ELBOW
	RECTANGULAR TEE
	ROUND (OR OVAL) ELBOW
	VOLUME CONTROL DAMPER
	SUPPLY AIR DIFFUSER WITH ROUND SUPPLY DUCT
	RETURN OR EXHAUST AIR DIFFUSER WITH ROUND DUCT
	DIFFUSER OR GRILLE TYPE BRANCH DUCT AND/OR NECK SIZE CFM
	THERMOSTAT
	TEMPERATURE/HUMIDITY SENSOR
	TEMP SENSOR
	HOOD ANSUL PULL STATION



2 PHARMACY/ FAMILY RESTROOM HVAC PLAN
1/4" = 1'-0"



1 HVAC MEZZANINE PLAN
1/4" = 1'-0"



04/24/2015
CONSULTANT: 8501 Vico Street, Suite 2010, Chubbuck, NY 14803, P: 613.721.8680
DENVER: 1818 Platte Street, Denver, CO 80202, P: 303.693.8100
DALLAS: 7570 North St. Paul Street, Dallas, TX 75201, P: 800.469.4949
SEATTLE: 2211 Elliott Ave., Suite 241, Seattle, WA 98121, P: 800.469.4949



creating extraordinary places
www.cr-architects.com
800.469.4949
CONSULTANTS
STIPULATION FOR REUSE
THIS DRAWING WAS PREPARED FOR USE ON A SPECIFIC SITE AT FORT WORTH, TX. IT IS NOT SUITABLE FOR USE ON ANY OTHER PROJECT SITE ON A LATER DATE. THIS DRAWING IS THE PROPERTY OF CR ARCHITECTS AND ENGINEERS. REPRODUCTION OF THIS DRAWING FOR USE ON ANY OTHER PROJECT IS STRICTLY PROHIBITED AND MAY BE CONSIDERED A VIOLATION OF THE LAW.

CHECKED BY: DCZ
DRAWN BY: LPC
David P. Kimball P.E.
SUITE 5238 479-636-8004 800-331-8721
1805 S. MIDWAY ST. FORT WORTH, TX 76107
ROGERS, AR 72756 DESIGNED BY: LJC

OWNER
Kroger
ISSUE/REVISION
01/12/2015 90% PROGRESS REVIEW
03/27/2015 BID/PERMIT ISSUE

1 BULLETIN NO.1 04/24/2015

PROJECT TITLE
KROGER STORE
NEC N. Tarrant Parkway & Ray White Rd. Fort Worth, TX
COMMISSION NO. 514501.03
ISSUE DATE 03/27/15
SHEET TITLE
HVAC ENLARGED PLANS

SHEET NO.
M1.1c

THIS DOCUMENT IS THE PRODUCT AND EXCLUSIVE PROPERTY OF COLLETT-RUSSELL ARCHITECTS, INC. NEITHER THE DOCUMENT NOR THE INFORMATION IT CONTAINS MAY BE COPIED OR USED FOR OTHER THAN THE SPECIFIC PROJECT FOR WHICH IT WAS PREPARED WITHOUT THE EXPLICIT CONSENT OF COLLETT-RUSSELL ARCHITECTS, INC.
04/24/2015 2:28:49 PM