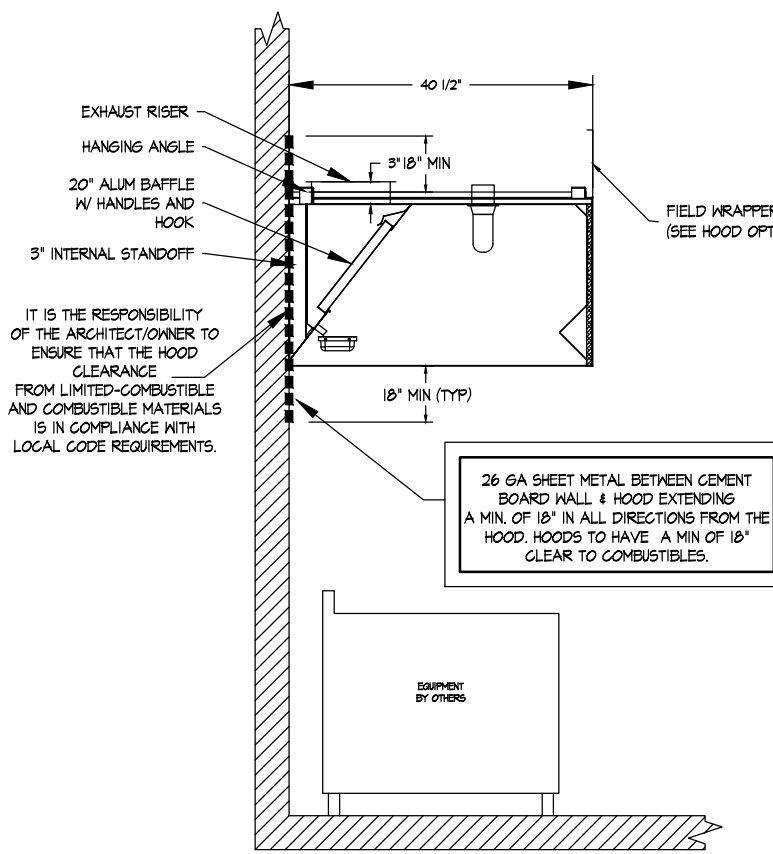
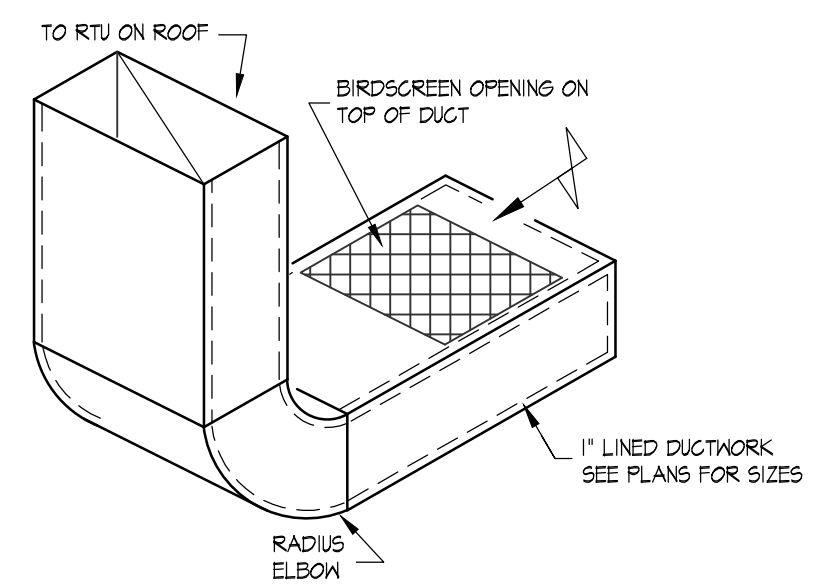


HARD ELBOW FLEX DUCT TO DIFFUSER
SCALE: N.T.S. (LAY IN CEILING)



HOOD ON WALL SECTION VIEW
SCALE: N.T.S.



RTU-45 R/A DUCTWORK DETAIL
SCALE: N.T.S.

ANSUL SCOPE BY FIRE
ANSUL CONTRACTOR.
SEE PLUMBING PLANS &
M-3.0 FOR ANSUL GAS
VALVE NOTES.

ALL KITCHEN HOODS AND ASSOCIATED ROOF FANS
(EF-1,2,3,4,5) AND DUCTWORK ARE PROVIDED BY
CAPTIVE AIR DIRECT TO OWNER LAYOUT, ROOF
OPENINGS & INSTALLATION BY MECHANICAL
CONTRACTOR. COORDINATE RECEIVING WITH G.C.
SEE KITCHEN PLANS FOR HOOD INFO.

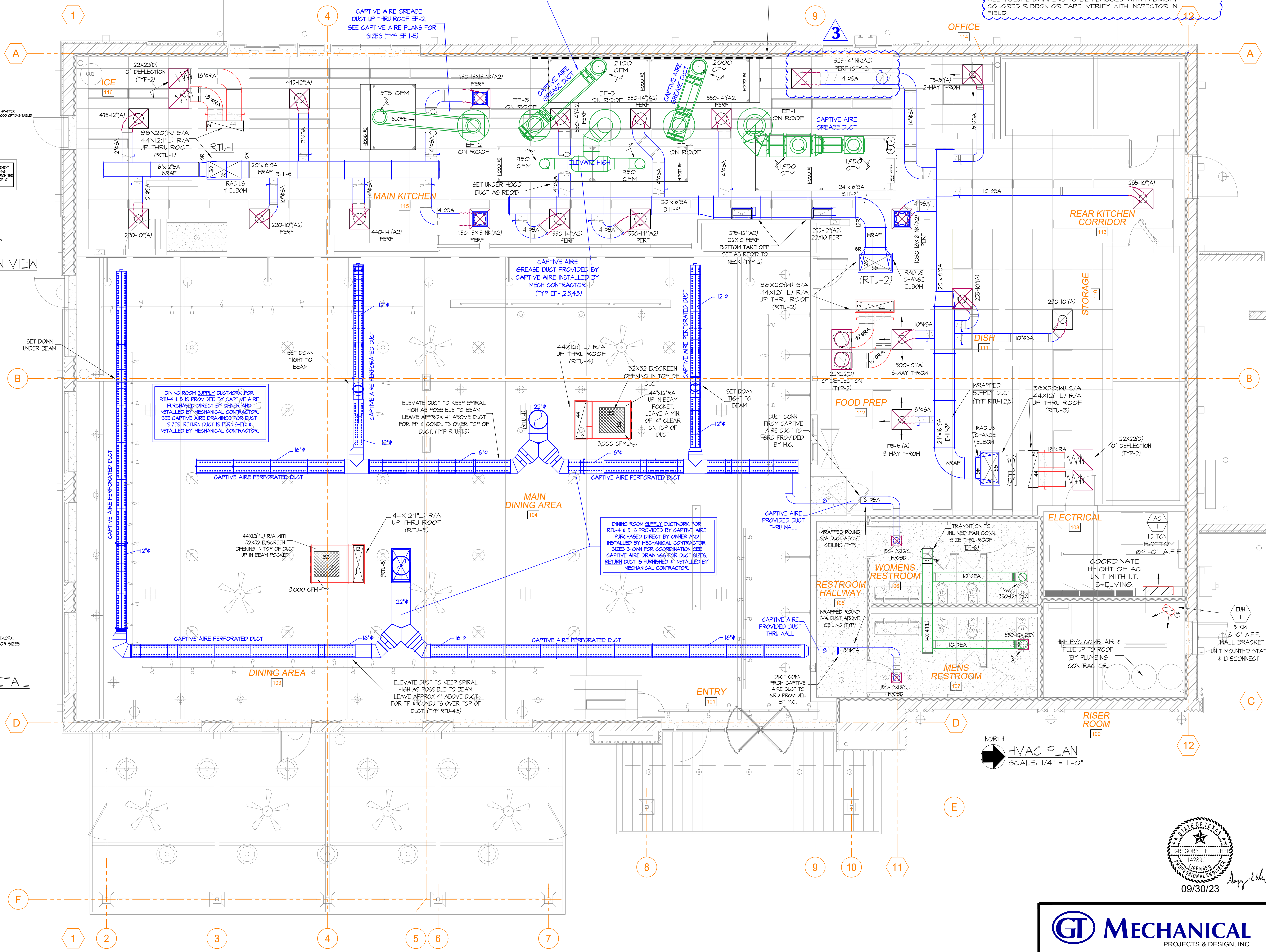
CAPTIVE AIR GREASE
DUCT UP THRU ROOF EF-2.
SEE CAPTIVE AIR PLANS FOR
SIZES (TYP EF-1-5)

EXTEND 3/8 GA SHEET METAL ALONG BACK &
SIDE WALL BETWEEN GYPSUM BOARD WALL &
HOOD. EXTEND 18" IN ALL DIRECTIONS FROM
THE HOOD. SEE HOOD SECTION VIEW THIS
PAGE
(TYP-HOODS 3,4)

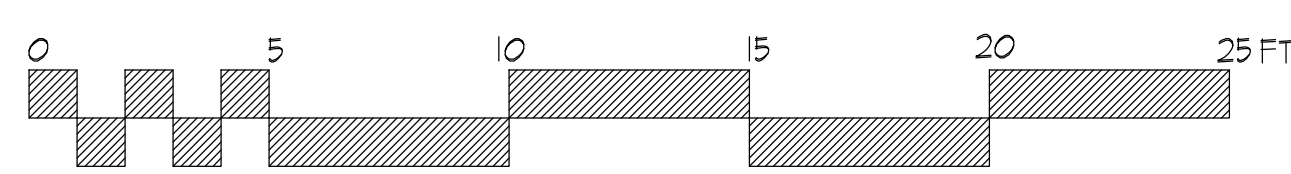
ALL TYPE I HOODS TO
HAVE A MIN OF 18"
CLEARANCE TO
COMBUSTIBLES.
ALL KITCHEN HOODS SHALL BE HUNG TO
JOISTS WITH THREADED ROD AND
UNISTRUT PER MANUFACTURERS
RECOMMENDATIONS.

SEE CAPTIVE AIR
DRAWINGS FOR ALL HOOD
DUCT ROUTING SIZES &
FITTINGS
(TYP HOODS 1-6)

PROVIDE MINIMUM WORK CLEARANCE AS REQ'D BY THE FORT
WORTH AMENDMENTS TO THE MECHANICAL CODE TO ALL SYSTEM
PARTS THAT MAY REQUIRE MAINTENANCE OR DUCTWORK
INSPECTIONS.
ALL VOLUME DAMPERS TO BE FLAGGED WITH A BRIGHT
COLORED RIBBON OR TAPE. VERIFY WITH INSPECTOR IN
FIELD.



NORTH
HVAC PLAN
SCALE: 1/4" = 1'-0"



09/30/23
Professional Engineer
Gregory E. Ueber
142890
Seal of the State of Texas

GT MECHANICAL
PROJECTS & DESIGN, INC.
15729 South Annico Drive
Homer Glen, IL 60491
(708) 645-7400 * FAX (708) 645-0687

2001 Midwest Rd., Suite 301, Oak Brook, Illinois 60523
Office (630) 573-1770
www.jensen-jensen.com



NEW PORTILLO'S RESTAURANT
Portillo's Hot Dogs, LLC
North Tarrant & Tehama Ridge Parkways
Fort Worth, TX

HVAC PLAN

NO.	DATE	REVISION	BY	DESCRIPTION
1	03.15.23	REVISION 01 - PERMIT COMMENTS		
2	03.15.23	REVISION 02 - ISSUED FOR PERMIT		

Drwn: Chkd:
TB CU
Date:
03.15.23
Filename:
Sheet:
M2-0
Job No.
3270

REVISION 3 - 06.08.23

GENERAL NOTES:
 1 HVAC CONTRACTOR SHALL FURNISH SHUT OFF VALVE AT ALL KITCHEN EQUIPMENT LOCATIONS. FLEXIBLE CONNECTOR AND FINAL CONNECTIONS ARE BY KITCHEN EQUIPMENT SCHEDULE. SEE FOOD SERVICE PLUMBING ROUGH IN DRAWINGS FOR FURTHER DETAIL.
 GAS PIPING PLAN DRAWING NOTES:
 KITCHEN HOOD FIRE PROTECTION GSA SHUT-OFF VALVE CONTRACTOR SHALL INSTALL GAS VALVE IN ACCESSIBLE LOCATION AS REQUIRED BY CODE. ONE ELECTRONIC GAS VALVE TO BE PROVIDED BY CAPTIVE AIRE AND INSTALLED BY MECHANICAL CONTRACTOR. 120V POWER FROM CAPTIVE AIRE HOOD #3 CONTROL PANEL BY E.C. MECHANICAL CONTRACTOR TO PROVIDE A TAG ON CEILING TO DESIGNATE LOCATION OF ANSL VALVE ABOVE CEILING GRID.

Copyright © 2023, Jensen & Jensen Architects, P.C.
 2001 Midwest Rd., Suite 301, Oak Brook, Illinois 60523
 Office (630) 573-1770 Fax (630) 573-1773
 www.jensen-jensen.com

JENSEN
 architects - planners - interiors

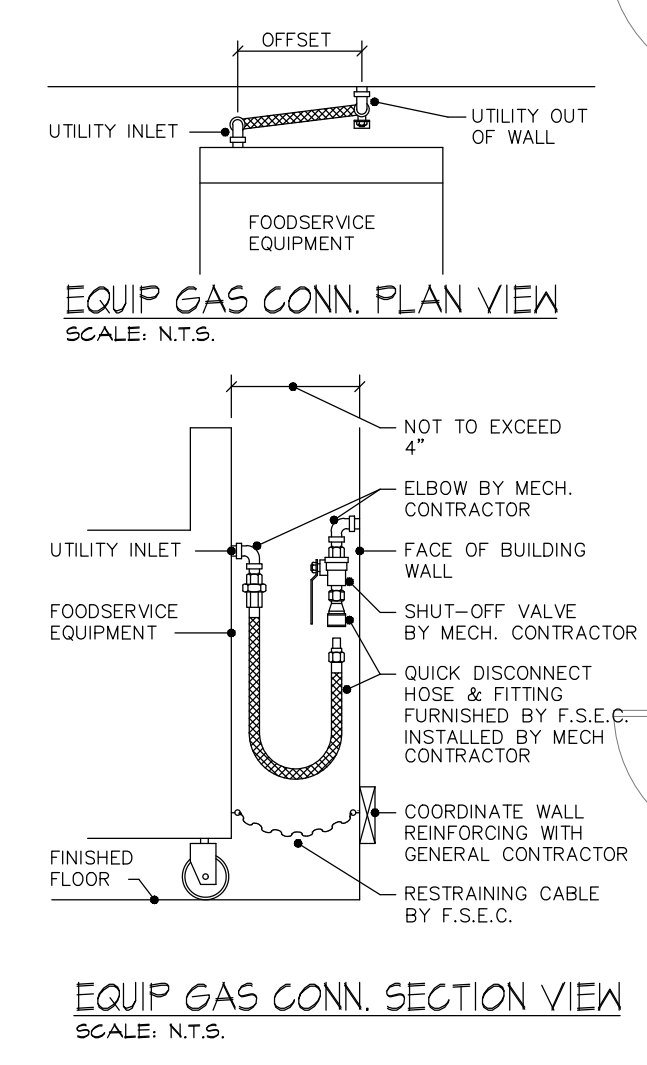
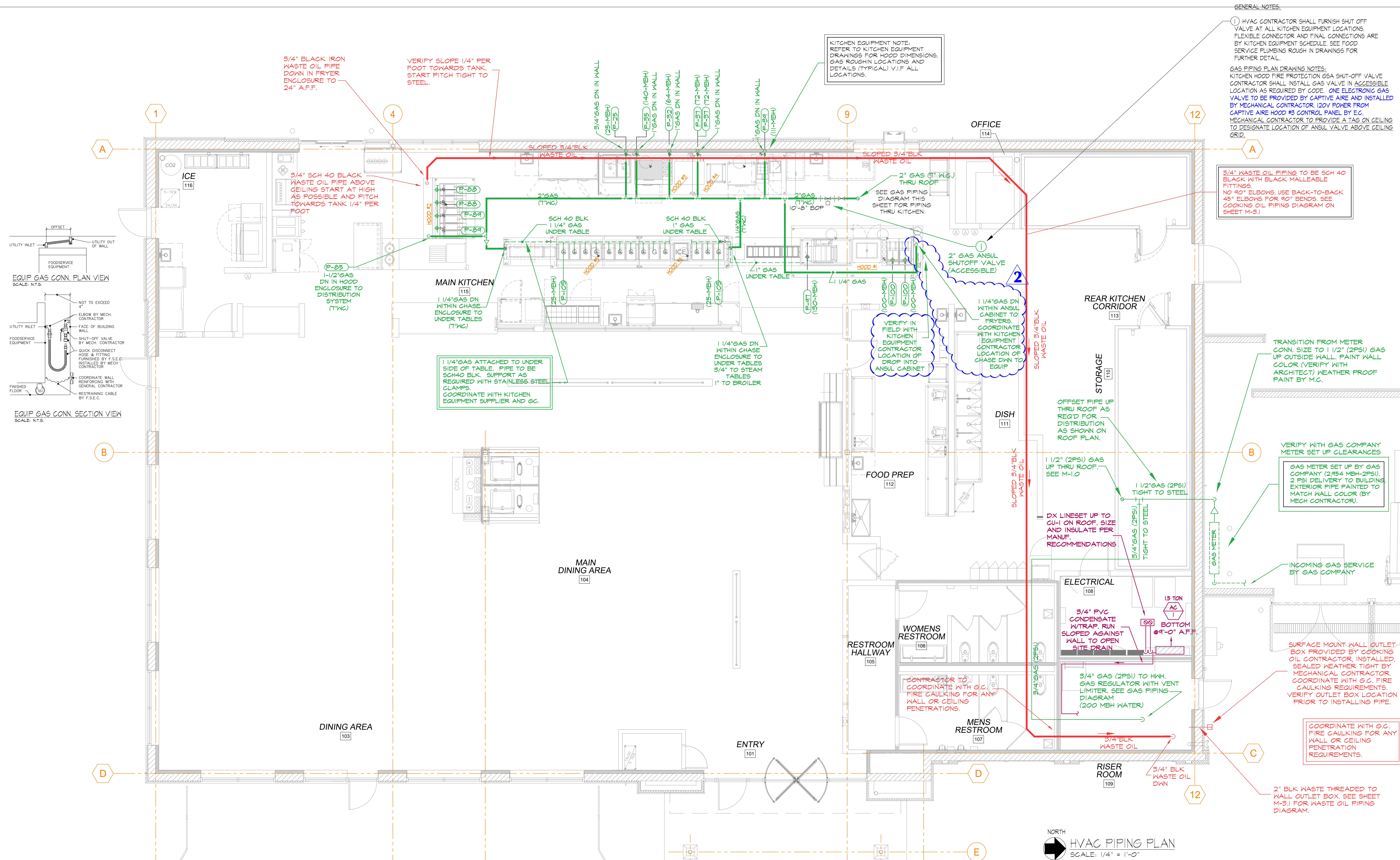
NEW PORTILLO'S RESTAURANT
 Portillo's hot Dogs, LLC
 North Tarrant & Tehama Ridge Parkways
 Fort Worth, TX

HVAC PIPING PLAN

REVISIONS

NO.	DATE	REVISION
2	03.15.23	REVISION #2 - ISSUED FOR PERMIT

Drwn: Chkd:
 TB CU
 Date:
 03.15.23
 Filename:
 M3-0
 Job No.
 3270



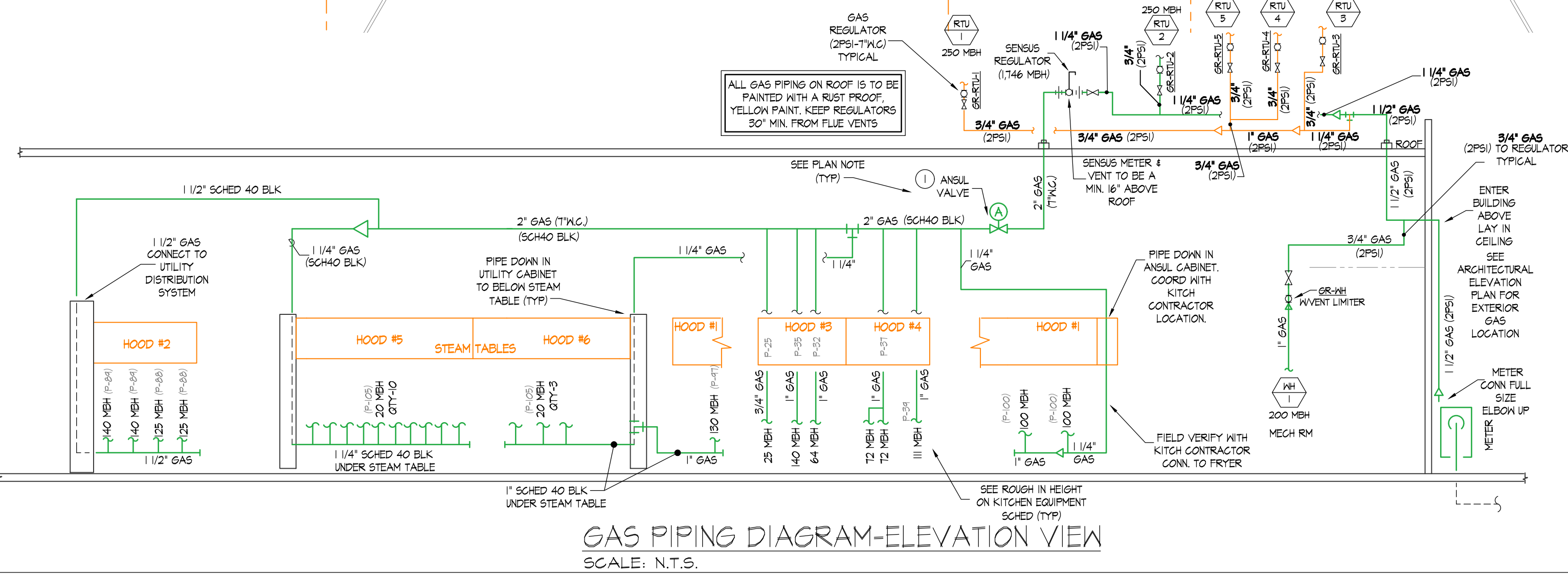
GAS KITCHEN EQUIPMENT SCHEDULE

ITEM #	QUANTITY	DESCRIPTION	GAS CONN. SIZE (IN.)	LOAD (MBH)	ROUGH IN HEIGHT
25	1	BAINE MARIE	3/4"	25 MBH	5'
32	1	THO BURNER RANGE	3/4"	64 MBH	30"
35	1	CHARBROILER GAS	3/4"	150 MBH	30"
37	2	OVEN CONVECTION	3/4"	22 MBH EACH	30"
39	1	PASTA COOKER, GAS	3/4"	111 MBH	30"
40	2	FRYER, DEEP FAT, GAS	3/4"	125 MBH EACH	12"
44	2	FRYER, DEEP FAT, GAS	3/4"	140 MBH EACH	12"
47	1	BROILER	3/4"	150 MBH	UNDER TABLE
100	2	FRYER, DEEP FAT, GAS	3/4"	100 MBH EACH	12"
105	13	STEAM TABLE WELL	3/4"	20 MBH EACH	12"
65	1	UTILITY DISTRIBUTION SYSTEM FOR (4) ITEMS 88 & 89	1 1/2"	-	IN CHASE
TOTAL:				1604 MBH	

SEE FOOD SERVICE DRAWINGS FOR DIMENSIONS TO ALL GAS ROUGH IN LOCATIONS

GAS SUMMARY

EQUIPMENT	MBH
KITCHEN EQUIPMENT	1604 MBH
RTU-1	250 MBH
RTU-2	250 MBH
RTU-3	250 MBH
RTU-4	200 MBH
RTU-5	200 MBH
WATER HEATER	200 MBH
TOTAL:	2354 MBH



GT MECHANICAL
 PROJECTS & DESIGN, INC.
 15729 South Annico Drive
 Homer Glen, IL 60491
 (708) 645-7400 * FAX (708) 645-0687

REVISION 2 - 03.15.23

ROOF TOP UNIT SCHEDULE (UNITS PURCHASED BY PORTILLO'S)												
TAG	MANUFACTURER	MODEL	TONS	CFM		SERVICE	ELECTRIC				GAS HEAT	
				SUPPLY	MAX O.A.		VOLTS/PH/Hz	MCA	MOCF	HP	INPUT MBH	OUTPUT MBH
RTU-1	CAPTIVE AIRE	CASRTU5-1250-22-20T-DOAS	20	3,350	3,350	MAIN KITCHEN	208 / 3 / 60	104.2	110	5	250	200
RTU-2	CAPTIVE AIRE	CASRTU5-1250-22-20T-DOAS	20	3,350	3,350	MAIN KITCHEN	208 / 3 / 60	104.2	110	5	250	200
RTU-3	CAPTIVE AIRE	CASRTU5-1250-22-20T-DOAS	20	3,350	3,350	KITCHEN/BOH	208 / 3 / 60	104.2	110	5	250	200
RTU-4	CAPTIVE AIRE	CASRTU5-1200-22-15T-DOAS	15	3,000	1,350	INTERIOR DINING	208 / 3 / 60	80.2	90	5	200	160
RTU-5	CAPTIVE AIRE	CASRTU5-1200-22-15T-DOAS	15	3,000	1,350	PERIMETER DINING	208 / 3 / 60	80.2	90	5	200	160

ROOFTOP UNITS AND INSULATED ROOF CURBS ARE PROVIDED BY CAPTIVE AIRE & PURCHASED DIRECT BY OWNER. RECEIVING, LAY-OUT/ROOF OPENINGS, INSTALLATION & START UP BY THE MECH CONTRACTOR. COORDINATE WITH G.C. MECH CONTRACTOR TO BALANCE & PROVIDE ONE YEAR LABOR AND MATERIAL WARRANTY.

INFORMATION SHOWN HERE FOR COORDINATION ONLY. SEE CAPTIVE AIRE PLANS FOR FINAL EQUIP SCHEDULES.

FAN SCHEDULE (UNITS PURCHASED BY PORTILLO'S)										
TAG	MANUFACTURER	MODEL	TYPE	CFM	ELECTRIC			LOCATION	AREA SERVED	
					HP	VOLTS/PH/Hz	FLA			
EF-1	CAPTIVE AIRE	DU240HFA	UPBLAST	3,900	3.0	208 / 3 / 60	10.2	ROOF	KITCHEN HOOD #1	
EF-2	CAPTIVE AIRE	DU80HFA	UPBLAST	1,575	1.0	208 / 3 / 60	3.8	ROOF	KITCHEN HOOD #2	
EF-3	CAPTIVE AIRE	DU80HFA	UPBLAST	2,100	2.0	208 / 3 / 60	6.1	ROOF	KITCHEN HOOD #3	
EF-4	CAPTIVE AIRE	DU80HFA	UPBLAST	2,000	1.0	208 / 3 / 60	3.8	ROOF	KITCHEN HOOD #4	
EF-5	CAPTIVE AIRE	DU80HFA	UPBLAST	1,900	1.0	208 / 3 / 60	3.8	ROOF	KITCHEN HOOD #5 & 6	
EF-6	CAPTIVE AIRE	DR33HFA	DOWNBLAST	750	0.3	115 / 1 / 60	4.3	ROOF	TOILETS	

EXHAUST FANS AND ROOF CURBS ARE PROVIDED BY CAPTIVE AIRE & PURCHASED DIRECT BY OWNER. RECEIVING, LAY-OUT/ROOF OPENINGS, INSTALLATION & START UP BY THE MECH CONTRACTOR. COORDINATE WITH G.C. MECH CONTRACTOR TO BALANCE & PROVIDE ONE YEAR LABOR AND MATERIAL WARRANTY.

INFORMATION SHOWN HERE FOR COORDINATION ONLY. SEE CAPTIVE AIRE PLANS FOR FINAL EQUIP SCHEDULES.

GAS REGULATOR SCHEDULE											
TAG	MANUFACTURER	MODEL	MAX INLET PRESSURE	NORMAL OPERATION PRESSURE	REQUIRED OUTPUT PRESSURE	MAX CFM(MBH)	MIN CFM(MBH)	INLET PIPE SIZE	SERVICE	REMARKS	
GR-KITCH	SENSUS	243-12-2 1 1/2"	2PSI	1PSI	1-8"VC	1650	20	1 1/4"	KITCHEN EQUIP	3/4" ORIFICE, GRN SPRING	
GR-RTU-1	MAXITROL	325-5	2PSI	1PSI	7"VC	250	40	3/4"	RTU-1	5R WEATHER PROOF CAP	
GR-RTU-2	MAXITROL	325-5	2PSI	1PSI	7"VC	250	40	3/4"	RTU-2	5R WEATHER PROOF CAP	
GR-RTU-3	MAXITROL	325-5	2PSI	1PSI	7"VC	250	40	3/4"	RTU-3	5R WEATHER PROOF CAP	
GR-RTU-4	MAXITROL	325-5	2PSI	1PSI	7"VC	200	40	3/4"	RTU-4	5R WEATHER PROOF CAP	
GR-RTU-5	MAXITROL	325-5	2PSI	1PSI	7"VC	200	40	3/4"	RTU-5	5R WEATHER PROOF CAP	
GR-HVH	MAXITROL	325-5	2PSI	1PSI	7"VC	200	45	3/4"	HVH	VENT LIMITER	

REMARKS: 1. CONFIRM SIZING WITH VENDOR AND INSTALL PER MANUF RECOMMENDATIONS.

DIFFUSER, REGISTER AND GRILLE SCHEDULE										
TAG	MANUFACTURER	MODEL	TYPE	PATTERN	FACE SIZE	NECK SIZE	MOUNTING	MATERIAL	FINISH	REMARKS
A	PRICE	AMD	LOUVER FACE	2, 3 & 4-HAY	24"x24"	SEE PLAN	LAY-IN	ALUMINUM	WHITE	SUPPLY, INSULATED BACK
A2	PRICE	PDDR	PERF RETURN USED FOR SUPPLY	PERF	24"x24" INSULATED BACK	SEE PLAN	LAY-IN	ALUMINUM	WHITE	PERF RETURN USED FOR SUPPLY NEAR HOODS. INSULATED BACK
C	PRICE	620-D	REGISTER	DBL DFL	SEE PLAN	SEE PLAN	SURFACE	ALUMINUM	WHITE	SUPPLY W/OBD
D	PRICE	650	GRILLE	SEE PLAN	SEE PLAN	SEE PLAN	SURFACE	ALUMINUM	WHITE	RETURN/EXHAUST

REMARKS: 1. ALL SUPPLY AIR DIFFUSERS TO HAVE AN INSULATED BACK.

3

DUCT CONSTRUCTION SCHEDULE			
DUCT SYSTEM TYPE	MATERIAL TYPE	INSULATION TYPE	PRESSURE CLASS
RTU-1, RTU-2, RTU-3 RECTANGULAR SUPPLY DUCT (KITCHEN)	GALVANIZED	FIBERGLASS WRAP 3/4" DENSITY (R-6 MINIMUM)	+ 2"
RTU-1-5 RECTANGULAR RETURN DUCT	GALVANIZED	1" x 1/2" LINER	- 2"
RTU-1, RTU-2, RTU-3 ROUND RETURN DUCT	GALVANIZED	UNINSULATED	- 2"
RTU-4 & 5 SUPPLY DUCT (DINING ROOMS)	GASKETED HVV GLAMP PROVIDED BY CAPTIVE AIRE INSTALLED BY M.G.	(SEE CAPTIVE AIRE PLANS)	+ 2"
RTU-1,2,3,4,5 ROUND SUPPLY DUCT ABOVE LAY-IN AND/OR GYP CEILINGS	GALVANIZED	FIBERGLASS WRAP 3/4" DENSITY (R-6 MINIMUM)	+ 2"
RECTANGULAR EXHAUST, EF-6 WHERE NOTED	GALVANIZED	1" x 1/2" LINER	- 1"
ROUND EXHAUST, EF-6	GALVANIZED	UNINSULATED	- 1"
KITCHEN EXHAUST (EF-1,2,3,4,5)	UL LISTED TYPE I DUCTWORK PROVIDED BY CAPTIVE AIRE INSTALLED BY MECH CONTRACTOR	DOUBLE WALL PRE-INSULATED, SEE CAPTIVE AIRE PLANS	- 2"
ROUND FLEXIBLE	FLEXIBLE	INSULATED	+/- 1"

ELECTRIC UNIT HEATER SCHEDULE												
TAG	QTY	MANUFACTURER	MODEL	STAGES	HEATING			ELECTRICAL		HEIGHT (LBS.)	AREA SERVED	REMARKS
					BTUH	KN	TEMP RISE (°F)	VOLTS/PH/Hz	FLA			
EUH-1	1	GMARK	MH-05-01	1	11,000	5	-	208 / 1 / 60	24	30	OUTSIDE STORAGE	1, 2

REMARKS: 1. INTEGRAL T-5TAT 2. WALL BRACKET

DUCTLESS SPLIT HEAT PUMP SYSTEM SCHEDULE															
TAG	INDOOR/OUTDOOR	MANUFACTURER	MODEL	TON	SEER	REFRIGERANT TYPE	CAPACITY MBH	OUTDOOR			INDOOR		AREA SERVED		
								VOLTS	MCA	MOCF	HEIGHT (LBS.)	CFM		HEIGHT (LBS.)	
AG-1/GU-1		MITSUBISHI	PKA-A1B/PY-Y-A1B	1.5	15.3	R-410A	18 MBH	208/1	13	20	100	380	30	ELECT RM	1,2,3,4,5,6

REMARKS: 1. THERMOSTAT 2. LOW AMBIENT 3. WALL BRACKET 4. SIZE & INSULATE DX LINESET PER MANUF. RECOMMENDATIONS 5. INDOOR SECTION IS POWERED FROM OUTDOOR SECTION BY ELECTRICAL CONTRACTOR 6. DRAIN PAN LEVEL SENSOR 55610E

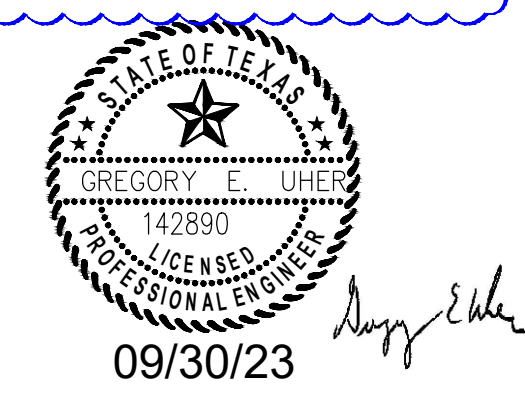
3

2021 IMG - MECHANICAL VENTILATION SCHEDULE													
ROOM	NAME	USE	FLOOR AREA (SQ FT) (A2)	CODE REQUIRED DENSITY PEOPLE/1000 SQ FT (P2)	# OF OCCUPANTS (P2)	ORDNANCE BREATHING ZONE O.A. CFM/PERSON (RP)	CODE REQUIRED O.A. CFM/50 FT (RA)	CODE REQ'D O.A. CFM (V2)	CODE REQ'D EXHAUST (CFM)	ACTUAL			REMARKS
										CFM	O.A. (CFM)	EXHAUST (CFM)	
ENTRY 101	PERIMETER DINING	230	70	16	7.5	0.18	150	0	0	0	0	0	RTU-5/OPEN TO DINING
RESTROOM HALLWAY 105	TOILET	90	N.R.	N.R.	N.R.	N.R.	0.06	10	0	0	0	0	RTU-5/OPEN TO DINING
MENS RESTROOM 107	TOILET	155	-	4 FIXT.	-	-	10 CFM/FIXTURE EXHAUST	-	280	150	70	350	RTU-5, EF-6
	TOTAL:	1540					RTU-5 TOTAL:	1060.0	280	3,000	1,350	350	
MAIN DINING 104	INTERIOR DINING	1800	70	158	7.5	0.18	1700	0	2850	1850	-	-	RTU-4
WOMENS RESTROOM 106	TOILET	155	-	4 FIXT.	-	-	10 CFM/FIXTURE EXHAUST	-	280	150	50	350	RTU-4, EF-6
	TOTAL:	1935					RTU-4 TOTAL:	1700.0	280	3,000	1,900	350	
MAIN KITCHEN 115	KITCHEN	1430	-	20	7.5	0.1 CFM/50 FT EXHAUST	200	850	8325	8325	10765	-	RTU-1, RTU-2, RTU-3 EF-1, EF-2, EF-3, EF-4, EF-5 (TRANSFER FROM DINING)
ICE 116	STORAGE	145	-	-	-	0.12	25	0	475	475	-	-	RTU-1
REAR KITCHEN CORRIDOR 113	CORRIDOR	225	N.R.	N.R.	N.R.	0.06	25	0	235	235	-	-	RTU-3
OFFICE 114	OFFICE	50	5	1	5	0.06	10	0	75	75	-	-	RTU-3
DISH 111	KITCHEN	240	-	N.R.	-	0.1 CFM/50 FT EXHAUST	-	205	235	235	235	-	RTU-3, EF-1,2,3,4,5
FOOD PREP 112	KITCHEN	285	-	N.R.	-	0.1 CFM/50 FT EXHAUST	-	240	475	475	475	-	RTU-3, EF-1,2,3,4,5
STORAGE 110	STORAGE	275	-	-	-	0.12	45.0	-	230	230	-	-	RTU-3
	TOTAL:	2650					RTU-1,2 & 3 TOTAL:	260	1245	10,050	10,050	1475	
ELECTRICAL ROOM 108	ELECTRICAL ROOM	110	N.R.	N.R.	N.R.	N.R.	-	-	-	-	-	-	AC-1
RISER RM 109	EQUIPMENT ROOM	40	N.R.	N.R.	N.R.	N.R.	-	-	-	-	-	-	EUH-1

BUILDING PRESSURIZATION SCHEDULE		
EXHAUST AIR	SERVES	CFM
EF-1	HOOD #1	-3,800
EF-2	HOOD #2	-1,575
EF-3	HOOD #3	-2,100
EF-4	HOOD #4	-2,000
EF-5	HOOD #5 & 6	-1,900
EF-6	TOILETS	-700
TOTAL EXHAUST		-12,175
OUTDOOR AIR		
RTU-1	KITCHEN	+3,350
RTU-2	KITCHEN	+3,350
RTU-3	KITCHEN	+3,350
RTU-4	DINING INTERIOR	+1,350
RTU-5	DINING PERIMETER	+1,350
TOTAL OUTDOOR AIR		+12,750
BALANCE		+575

3

GENERAL NOTES:
 INSTALLATION SHALL COMPLY WITH ALL APPLICABLE LOCAL AND STATE CODES INCLUDING 2021 IMG & THE INTERNATIONAL FUEL GAS CODE 2021 WITH ALL LOCAL AMENDMENTS.
 ALL EQUIPMENT SELECTED TO COMPLY WITH PLANS AND SPECIFICATIONS.
 ALL EQUIPMENT TO HAVE UL LISTINGS.
 OUTSIDE AIR INTAKES TO BE LOCATED A MINIMUM OF 10'-0" FROM TOILET EXHAUST VENTS AND ALL OTHER SOURCES OF CONTAMINATION.
 ALL FLUES TO EXTEND 3'-0" ABOVE ROOF.
 ALL DIMENSIONS ARE IN INCHES UNLESS OTHERWISE NOTED.
RESPONSIBILITY NOTES:
 SUBMIT 6 COPIES OF EQUIPMENT SUBMITTALS AS WELL AS 1/4" SCALED SHOP DRAWINGS TO ARCHITECT/ENGINEER FOR REVIEW AND APPROVAL.
 GENERAL CONTRACTOR SHALL PROVIDE CUTTING AND PATCHING OF FLOOR AND WALL OPENINGS, INCLUDING LINTELS AND SECONDARY STEEL AS REQUIRED. LAYOUT BY MECHANICAL CONTRACTOR.
 ALL CUTTING OF ROOF DECK WILL BE BY MECHANICAL CONTRACTOR.
 ALL SUSPENDED MECHANICAL EQUIPMENT TO BE SUSPENDED FROM THE TOP CHORD OF THE BAR JOIST UNLESS SPECIFICALLY STATED OTHERWISE BY THE STRUCTURAL ENGINEER.
 POWER WIRING BY ELECTRICAL CONTRACTOR.
 INTERLOCK WIRING BY ELECTRICAL CONTRACTOR.
 CONTROL WIRING AND CONDUIT BY MECHANICAL CONTRACTOR.
 LOOSE STARTERS AND DISCONNECTS TO BE FURNISHED AND INSTALLED BY MECHANICAL CONTRACTOR.
 DUCT MOUNTED SMOKE DETECTORS SHALL BE INSTALLED IN THE RETURN AIR DUCTWORK OF ROOFTOP UNITS GREATER THAN 2000 CFM. SMOKE DETECTORS AND FIRE ALARM INTERLOCKS SHALL BE FURNISHED AND INSTALLED BY OTHERS. CURBS WILL BE 18" SELF LEVELING, INSULATED, UNLESS NOTED OTHERWISE.
 HYAC CONTRACTOR SHALL FURNISH AND INSTALL ALL ROOF CURBS AND/OR RAILS FOR ROOF MOUNTED HYAC EQUIPMENT. IF ADDITIONAL STRUCTURAL SUPPORTS ARE REQUIRED, THEY WILL BE FURNISHED AND INSTALLED BY OTHERS. CURBS WILL BE 18" SELF LEVELING, INSULATED, UNLESS NOTED OTHERWISE.
 TEST AND BALANCE OF ALL SYSTEMS TO BE BY MECHANICAL CONTRACTOR. SUBMIT 4 COPIES OF REPORTS TO OWNER UPON COMPLETION.
 SUBMIT 4 COPIES OF O&M MANUALS AND ASBUILTS TO OWNER UPON PROJECT COMPLETION.
DUCTWORK NOTES:
 SEE CAPTIVE AIRE PLANS FOR DINING ROOM SUPPLY DUCT PROVIDED BY CAPTIVE AIRE. INSTALL BY MECH CONTRACTOR.
 ALL DUCTWORK TO BE GALVANIZED SHEET METAL.
 SHEET METAL FABRICATION AND INSTALLATION SHALL COMPLY WITH THE DUCT MANUAL FOR VENTILATING AND AIR CONDITIONING SYSTEMS AS PUBLISHED BY SMACNA.
 DUCT SIZES SHOWN ARE FINISHED O.D. DIMENSIONS, LINER ALREADY INCLUDED IN FINISHED DUCT SIZE.
 CROSSBREAKING WILL BEGIN ON UNLINED DUCTS, 18" OR HIGHER, 20 GAUGE OR LESS.
 FLEXIBLE DUCT SHALL NOT EXCEED 5 FEET IN LENGTH AND SHALL BE FLEXMASTER TYPE 3 INSULATED.
 ALL DUCTWORK ON ROOF TO BE SEALED SUITABLE FOR OUTDOOR INSTALLATION.
 INSULATION, JOINTS, SEAMS AND CONNECTIONS IN ALL DUCTS SHALL BE SECURELY FASTENED AND SEALED WITH AN APPROVED METHOD AND MATERIALS AS REQUIRED.
 DUCTS SHALL BE SUPPORTED WITH APPROVED HANGERS AT INTERVALS NOT EXCEEDING 10'-0" OR BY OTHER APPROVED DUCT SUPPORT SYSTEMS DESIGNATED IN ACCORDANCE WITH THE INTERNATIONAL BUILDING CODE. FLEX DUCT TO BE SUPPORTED IN ACCORDANCE WITH MANUFACTURER'S INSTALLATION INSTRUCTIONS.
CONTROL NOTES:
 THERMOSTAT LOCATIONS & ELEVATIONS TO BE MOUNTED AS SHOWN ON PLANS. SEE M-4.0.
GAS PIPING NOTES:
 ALL GAS PIPING TO BE SCHEDULE 40 BLACK STEEL WITH BLACK MALLEABLE IRON FITTINGS.
 ALL GAS PIPE 2" AND BELOW TO BE SCHEDULED PIPE. ALL GAS PIPE 2-1/2" AND ABOVE TO BE WELDED.
 PROVIDE SHUTOFF VALVE, UNION, DIRT LEG, AND PRESSURE REGULATORS AT EACH PIECE OF GAS FIRED EQUIPMENT.
 ALL EXTERIOR GAS PIPE (NOT ROOF) IS TO BE PAINTED WALL COLOR WITH WEATHER RESISTANT PAINT BY MECHANICAL CONTRACTOR. ALL GAS PIPING ON ROOF TO BE PAINTED WITH WEATHER RESISTANT YELLOW PAINT BY MECHANICAL CONTRACTOR.
TYPE I HOOD DUCT NOTES: DUCT FROM HOOD TO ROOF EQUIPMENT PROVIDED BY CAPTIVE AIRE INSTALLED BY M.G. SEE CAPTIVE AIRE PLANS FOR DUCTWORK DETAILS.
 ALL DUCTWORK TO BE PROVIDED WITH CLEAN OUT ACCESS DOORS EVERY 20'-0" AND OR CHANGE IN DIRECTION OF DUCTWORK. VERIFY WITH GC AND OWNER ON LOCATIONS.
 CLEAN OUTS TO BE A MINIMUM OF 12"x12" AND LOCATED ON VERTICAL PORTION OF DUCT.
 HORIZONTAL DUCT RUNS SHALL BE PITCHED TO DRAIN BACK TO HOOD A MINIMUM OF 1/4" PER FT FOR DUCT RUNS OF LESS THAN 15 FT.
 BEFORE EXHAUST SYSTEM CAN BE USED OR CONCEALED, A LIGHT TEST OR SMOKE TEST SHALL BE PERFORMED BY THE INSTALLING CONTRACTOR AND WITNESSED BY THE INSPECTIONS DEPARTMENT TO DETERMINE THAT ALL WELDS/JOINTS ARE LIQUID TIGHT. IMG 506.3.2.3.
 PROVIDE MINIMUM WORK CLEARANCE AS REQ'D BY THE FORT WORTH AMENDMENTS TO THE MECHANICAL CODE TO ALL SYSTEM PARTS THAT MAY REQUIRE MAINTENANCE OR DUCTWORK INSPECTIONS.
 ALL VOLUME DAMPERS TO BE FLAGGED WITH A BRIGHT COLORED RIBBON OR TAPE. VERIFY WITH INSPECTOR IN FIELD.
 DX PIPING ON ROOF TO HAVE A WEATHER PROTECTIVE PVC JACKET. PROTO CORP. PHOTO FITTING COVER SYSTEM OR EQUAL.



09/30/23

GT MECHANICAL
 PROJECTS & DESIGN, INC.
 15729 South Annico Drive
 Homer Glen, IL 60491
 (708) 645-7400 * FAX (708) 645-0687

REVISION 3 - 06.08.23

JENSEN
 architects - planners - interiors
 2001 Midwest Rd., Suite 301, Oak Brook, Illinois 60523
 Office (630) 573-1770 Fax (630) 573-1773
 www.jensen-jensen.com

NEW PORTILLO'S RESTAURANT
 Portillo's Hot Dogs, LLC
 North Tarrant & Tehama Ridge Parkways
 Fort Worth, TX

HVAC SCHEDULES & NOTES

REVISION #3 - PERMIT COMMENTS
 REVISION #2 - OWNER COMMENTS
 REVISION #1 - OWNER COMMENTS

06.08.2023
 07.13.2023
 08.15.2023

Drwn: Chkd:
 TB CU
 Date:
 03.15.23
 Filename:
 Sheet:
 M5-0
 Job No.
 3270