

MECHANICAL SPECIFICATIONS

PROVIDE EQUIPMENT INDICATED ON THE DRAWINGS, AND AS REQUIRED FOR A COMPLETE FUNCTIONING SYSTEM.

DEFINITIONS: FURNISH MEANS TO SUPPLY AND DELIVER TO PROJECT SITE, READY FOR INSTALLATION. INSTALL MEANS TO PLACE IN POSITION AND MAKE CONNECTIONS FOR SERVICE OR USE. PROVIDE MEANS TO FURNISH AND INSTALL, COMPLETE AND READY FOR INTENDED USE.

WARRANTY: PROVIDE LABOR AND MATERIALS TO REPAIR OR REPLACE DEFECTIVE PARTS AND MATERIALS AS REQUIRED FOR ONE YEAR AFTER SUBSTANTIAL COMPLETION OR OWNER ACCEPTANCE OF THE COMPLETED PROJECT. PROVIDE A SEPARATE LINE ITEM DEDUCT AMOUNT ON THE PROPOSAL FORM TO DELETE WARRANTY SERVICE, AT THE OWNER'S OPTION.

COORDINATION: COORDINATE WITH THE WORK OF OTHER TRADES. EQUIPMENT FURNISHED BY OTHERS, REQUIREMENTS OF THE OWNER, AND WITH THE CONSTRAINTS OF THE EXISTING CONDITIONS OF THE PROJECT SITE.

DUCT DIMENSIONS: UNLESS OTHERWISE NOTED, DUCT DIMENSIONS ON THE DRAWINGS ARE INSIDE CLEAR DIMENSIONS.

SHEETMETAL DUCTWORK: PROVIDE SHEETMETAL DUCTWORK FABRICATED AND INSTALLED IN ACCORDANCE WITH ASHRAE AND SMACNA STANDARDS, FOR 1" W.G. PRESSURE CLASS, SEAL CLASS "A". SHEETMETAL SHALL BE GALVANIZED SHEET STEEL OF LOCK FORMING QUALITY, WITH G90 ZINC COATING. SHEET SHALL COMPLY WITH ASTM A653 STANDARD SPECIFICATION FOR STEEL SHEETMETAL, ZINC COATED (GALVANIZED) OR ZINC-IRON ALLOY-COATED (GALVANNEAL) BY THE HOT DIP PROCESS, AND A924 STANDARD SPECIFICATION FOR GENERAL REQUIREMENTS FOR SHEET, METALLIC-COATED BY THE HOT DIP PROCESS. ALL ANGLE IRON USED FOR SUPPORT SHALL BE GALVANIZED. CONNECTIONS TO WALLS OR FLOOR SHALL BE AIR TIGHT WITH ANGLE IRON AND CAULKING. SEAL ALL DUCT SEAMS, TRANSVERSE AND LONGITUDINAL, AIR TIGHT. PROVIDE TURNING VANES AT ALL 90° ELBOWS.

ROUND SHEETMETAL DUCT: PROVIDE SPIRAL SEAM (ALL SIZES) OR SNAP LOCK (DUCT SIZES UP TO 10") GALVANIZED STEEL COMPLYING WITH SMACNA STANDARDS. SPIRAL SEAM DUCTWORK SHALL HAVE SMACNA SEAM TYPE RL-1.

FLEXIBLE DUCT: PROVIDE FACTORY ASSEMBLED CLASS 1 AIR DUCT (UL 181) WITH 1" THICK 1 PCF FIBERGLASS INSULATION AND REINFORCED OUTER PROTECTIVE COVER/VAPOR BARRIER. FLEXIBLE DUCT SHALL MEET NFPA 90A WITH FLAME SPREAD UNDER 25, SMOKE DEVELOPED UNDER 50, AND SHALL BE RATED FOR MINIMUM 1" W.G. PRESSURE AND 0 TO 250°F TEMPERATURE. PROVIDE SCREW-OPERATED METAL ADJUSTABLE CLAMPING DEVICES. USE TWIST-LOCK TAP COLLARS AT CONNECTIONS INTO SHEETMETAL DUCTWORK. MAXIMUM EXTENDED LENGTH OF FLEXIBLE DUCT SHALL NOT EXCEED 6 FEET.

EXPOSED DUCTWORK: EXPOSED DUCTWORK SHALL BE CLEANED OF DEBRIS AND OIL, THEN WIPED DOWN WITH VINEGAR OR OTHER SURFACE PREPARING CHEMICAL TO PREPARE DUCT FOR PAINT.

DUCT SEALANT: PROVIDE WATER BASED SYNTHETIC LATEX EMULSION PERMANENTLY FLEXIBLE HIGH VELOCITY DUCT SEALANT, DUCTMATE INDUSTRIES, INC. PRO SEAL OR EQUAL. SEALANT TO BE LOW VOC LEED COMPLIANT CAPABLE OF 15" W.G., NFPA 90A AND 90B APPROVED, UL 181B-M LISTED AND UL 723 CLASSIFIED. INSTALL PER MANUFACTURER INSTRUCTIONS. SEALANT SHALL BE APPROVED FOR PLENUM INSTALLATIONS AND MEET FLAME SPREAD AND SMOKE DEVELOPED RATINGS FOR PLENUM APPLICATIONS.

DUCT INSULATION (ALL MAKE-UP AIR DUCT, ROUND SUPPLY DUCT AND ROUND RETURN DUCT ABOVE CEILING): PROVIDE MINIMUM 1-1/2" THICK BLANKET TYPE FIBERGLASS INSULATION COMPLYING WITH ASTM C-553, TYPE II, WITH FACTORY APPLIED RAFFER BONDED TO ALUMINUM FOIL, REINFORCED WITH FIBERGLASS VAPOR BARRIER/JACKET. JACKET SHALL CONFORM TO ASTM C-1136, TYPE II. INSTALLED R VALUE SHALL BE 4.2 OR HIGHER WITH A 0.75 PCF DENSITY.

DUCT LINER (ALL RECTANGULAR SUPPLY AND RETURN DUCT, AND EXPOSED ROUND DUCT): PROVIDE MINIMUM 1" THICK, 2 PCF DENSITY, LONG TEXTILE FIBER TYPE DUCT LINER, WITH COATING ON THE AIR STREAM SIDE CONFORMING TO NFPA 90A. DUCT LINER SHALL BE SECURED TO DUCT WITH BOTH ADHESIVE AND MECHANICAL FASTENERS. ADHESIVE SHALL BE LEED COMPLIANT LOW VOC AS RECOMMENDED BY DUCT LINER MANUFACTURER, AND SHALL COMPLY WITH ASTM C-916. DUCT LINER FASTENERS SHALL COMPLY WITH SMACNA "HVAC DUCT CONSTRUCTION STANDARDS", LATEST EDITION. THERMAL CONDUCTIVITY SHALL BE EQUAL TO OR LESS THAN 0.24 AT 75°F.

ROUND VOLUME DAMPERS: PROVIDE MINIMUM 20 GAUGE GALVANIZED STEEL FRAME AND BLADES, MINIMUM 3/8" SQUARE STEEL AXLE, MOLDED SYNTHETIC BEARINGS, WITH LOCKING POSITION REGULATOR. REGULATOR SHALL BE POSITIONED WITH SHEETMETAL BRACKET BEYOND DUCT COVERING, WHERE POSITIONING REGULATOR IS NOT ACCESSIBLE. PROVIDE COUPLING AND EXTENSION ROD WITH REGULATOR FOR CEILING OR WALL INSTALLATION, AS REQUIRED.

RECTANGULAR VOLUME DAMPERS: PROVIDE MINIMUM 16 GAUGE GALVANIZED STEEL CHANNEL FRAME, 16 GAUGE GALVANIZED STEEL BLADES, MINIMUM 1/2" HEXAGONAL AXLE, MOLDED SYNTHETIC BEARINGS, WITH 3/8" SQUARE PLATED STEEL CONTROL SHAFT. LINKAGES SHALL BE CONCEALED IN THE FRAME. OPERATING SHAFT SHALL EXTEND BEYOND FRAME AND DUCT TO A LOCKING QUADRANT WITH ADJUSTABLE LEVER. MAXIMUM BLADE WIDTH SHALL NOT EXCEED 6".

DUCT TURNING VANES: PROVIDE FABRICATED TURNING VANES AND VANE RUNNERS, CONSTRUCTED IN ACCORDANCE WITH SMACNA "HVAC DUCT CONSTRUCTION STANDARDS". PROVIDE TURNING VANES CONSTRUCTED OF CURVED BLADES, SUPPORTED WITH BARS PERPENDICULAR TO BLADES, AND SET INTO SIDE STRIPS SUITABLE FOR MOUNTING IN DUCTWORK. FOLLOW SMACNA GUIDELINES FOR SPACING SUPPORT, AND CONSTRUCTION. ALL BLADES SHALL BE DOUBLE THICKNESS AIRFOIL TYPE.

FLEXIBLE DUCT CONNECTORS: PROVIDE U.L. LABELED 30 OUNCE NEOPRENE COATED FIBERGLASS FABRIC DUCT CONNECTORS AT DUCT CONNECTIONS TO ALL VIBRATING EQUIPMENT.

DUCT ACCESS DOORS: PROVIDE HINGED ACCESS DOORS IN DUCTWORK WHERE REQUIRED FOR ACCESS TO EQUIPMENT. PROVIDE INSULATED ACCESS DOORS FOR INSULATED DUCTWORK. CONSTRUCT OF SAME OR THICKER GAUGE SHEETMETAL AS DUCT IN WHICH IT IS INSTALLED. PROVIDE FLUSH FRAMES FOR UNINSULATED DUCTS, AND EXTENDED FRAMES FOR EXTERNALLY INSULATED DUCTS. PROVIDE CONTINUOUS HINGES ON ONE SIDE, WITH ONE HANDLE-TYPE LATCH FOR ACCESS DOORS 12" HIGH AND SMALLER, AND TWO HANDLE-TYPE LATCHES FOR LARGER ACCESS DOORS.

GREASE EXHAUST DUCTWORK: PROVIDE FACTORY BUILT DOUBLE WALL GREASE EXHAUST DUCT AS MANUFACTURED BY CAPTIVEAIRE OR APPROVED EQUAL. DUCT SHALL BE ETL LISTED TO UL-1978 AND UL-2221 FOR ZERO CLEARANCE TO COMBUSTIBLES. ALL ELBOWS IN GREASE EXHAUST DUCTWORK SHALL BE RADIUS ELBOWS. NO SQUARE ELBOWS ARE ALLOWED. PROVIDE GREASE DUCT CLEAN-OUT ACCESS DOORS BY DUCT MANUFACTURER AT EVERY CHANGE OF DIRECTION IN DUCT AND/OR EVERY 10 FEET WITH MINIMUM OF 3 FEET OF CLEARANCE IN FRONT OF CLEAN-OUT.

COMPOSITE GREASE DUCT FIRE PROTECTION INSULATION: PROVIDE FLEXIBLE BLANKET-TYPE INSULATION COMPOSED OF FIBER BLANKET GREASE EXHAUST DUCTWORK SHALL BE RADIUS ELBOWS. NO SQUARE ELBOWS ARE ALLOWED. PROVIDE GREASE DUCT CLEAN-OUT ACCESS DOORS BY DUCT MANUFACTURER AT EVERY CHANGE OF DIRECTION IN DUCT AND/OR EVERY 10 FEET WITH MINIMUM OF 3 FEET OF CLEARANCE IN FRONT OF CLEAN-OUT.

MECHANICAL EQUIPMENT IDENTIFICATION: PROVIDE ENGRAVED PLASTIC LAMINATE LABEL FOR EACH MAJOR ITEM OF MECHANICAL EQUIPMENT AND EACH OPERATIONAL DEVICE. LETTERS TO BE A MINIMUM OF 1/8" HIGH. PROVIDE SIGNS TO INFORM OPERATOR OF OPERATIONAL REQUIREMENTS, TO INDICATE SAFETY AND EMERGENCY PRECAUTIONS, AND TO WARN OF HAZARDOUS AND IMPROPER OPERATION.

TESTING AND BALANCING: TEST AND ADJUST ALL MECHANICAL SYSTEMS AND EQUIPMENT TO ASSURE PROPER BALANCE AND OPERATION. PERFORM TESTS IN ACCORDANCE WITH THE MOST CURRENT NEBB OR AABC, AND ASHRAE STANDARDS. ELIMINATE OBJECTIONABLE NOISE AND VIBRATION, AND ASSURE PROPER FUNCTION OF CONTROLS. BALANCING CONTRACTOR SHALL BE AN INDEPENDENT CERTIFIED TEST AND BALANCE CONTRACTOR, WITH NEBB OR AABC CERTIFICATION. SUBMIT COMPLETED AND CERTIFIED TEST AND BALANCE REPORT TO OWNER'S REPRESENTATIVE. BALANCE ALL SYSTEMS TO WITHIN 5% OF AIR FLOWS INDICATED ON THE DRAWINGS. AND REPORT ALL DISCREPANCIES TO HVAC INSTALLER AND CORRECTION. MARK FINAL BALANCE POSITIONS ON DAMPERS WITH PERMANENT MARKER.

OPERATIONS AND MAINTENANCE MANUALS (O&M): AT COMPLETION OF PROJECT PROVIDE A MINIMUM OF TWO MANUALS IN THREE RING BINDERS TO THE OWNER/TENANT. MANUALS SHALL HAVE TABS LABELED WITH ALL SECTIONS SEPARATED WITH A CLEAR INDEX AT THE FRONT. PROVIDE A WARRANTY LETTER AT THE FRONT OF THE MANUAL STATING DATES OF WARRANTY (START DATE AND END DATE) AND CONTRACTS WITH PHONE NUMBERS FOR WARRANTY WORK. PROVIDE A NARRATIVE OF HOW EACH SYSTEM IS INTENDED TO OPERATE INCLUDING RECOMMENDED SETPOINTS. MANUALS SHALL INCLUDE SUBMITTALS OF ALL EQUIPMENT, SIZE AND OPTIONS SELECTED, PREVIOUS ALL BALANCING REPORTS, PROVIDE MANUFACTURER LITERATURE FOR OPERATIONS AND MAINTENANCE FOR ALL THE EQUIPMENT ON THE PROJECT. ALL PERIODIC AND ROUTINE MAINTENANCE SHALL BE CLEARLY IDENTIFIED. PROVIDE A CONTROLS SECTION LISTING SYSTEM OPERATING AND CONTROL INSTRUCTIONS, MAINTENANCE, CALIBRATION, WIRING DIAGRAMS, SCHEMATICS AND CONTROL SEQUENCE DESCRIPTIONS.

SHOP DRAWINGS/SUBMITTALS: SUBMIT ELECTRONIC SUBMITTALS AND SHOP DRAWINGS VIA EMAIL AS PDF ELECTRONIC FILES. PROVIDE SUBMITTALS ON ALL MECHANICAL EQUIPMENT (INCLUDING CONTROLS PACKAGES), AIR DISTRIBUTION DEVICES, DUCTWORK, DAMPERS, AND INSULATION. SUBMITTALS AND SHOP DRAWINGS SHALL INCLUDE THE FOLLOWING INFORMATION:

- PROJECT NAME
- DATE
- NAME AND ADDRESS OF ARCHITECT AND MEP ENGINEER
- NAME OF CONSTRUCTION MANAGER
- NAME OF CONTRACTOR
- NAME OF FIRM OR ENTITY THAT PREPARED SUBMITTAL
- NAMES OF SUBCONTRACTOR, MANUFACTURER, AND SUPPLIER.
- CATEGORY AND TYPE OF SUBMITTAL
- SUBMITTAL PURPOSE AND DESCRIPTION
- MANUFACTURER NAME
- PRODUCT NAME
- DRAWING NUMBER AND DETAIL REFERENCES, AS APPROPRIATE
- INDICATION OF FULL OR PARTIAL SUBMITTAL
- TRANSMITTAL NUMBER
- REMARKS

IDENTIFY DEVIATIONS FROM THE CONTRACT DOCUMENTS ON SHOP DRAWINGS AND SUBMITTALS. FURNISH COPIES OF FINAL SUBMITTALS TO MANUFACTURERS, SUBCONTRACTORS, SUPPLIERS, FABRICATORS, INSTALLERS, AUTHORITIES HAVING JURISDICTION, AND OTHERS AS NECESSARY FOR PERFORMANCE OF CONSTRUCTION ACTIVITIES. SHOW DISTRIBUTION ON TRANSMITTAL FORMS.

SUBMITTALS SHALL INCLUDE (AS APPLICABLE):

- MANUFACTURER'S CATALOG CUTS
- MANUFACTURER'S PRODUCT SPECIFICATIONS
- STATEMENT OF COMPLIANCE WITH SPECIFIED REFERENCED STANDARDS
- TESTING BY RECOGNIZED TESTING AGENCY
- APPLICATION OF TESTING AGENCY LABELS AND SEALS
- WIRING DIAGRAMS SHOWING FACTORY-INSTALLED WIRING
- PERFORMANCE CURVES
- OPERATIONAL RANGE DIAGRAMS
- CLEARANCES REQUIRED TO OTHER CONSTRUCTION, IF NOT INDICATED ON SHOP DRAWINGS.

FULL SIZE SHOP DRAWINGS SHALL INCLUDE (AS APPLICABLE):

- IDENTIFICATION OF PRODUCTS
- SCHEDULES
- COMPLIANCE WITH SPECIFIED STANDARDS
- NOTATION OF COORDINATION REQUIREMENTS
- NOTATION OF DIMENSIONS ESTABLISHED BY FIELD MEASUREMENT
- RELATIONSHIP AND ATTACHMENT TO ADJOINING CONSTRUCTION CLEARLY INDICATED.

MECHANICAL CONTRACTOR IS RESPONSIBLE FOR PROVIDING DUCT SHOP DRAWINGS TO THE ENGINEER FOR REVIEW PRIOR TO FABRICATION AND INSTALLATION.

MECHANICAL SYMBOLS LEGEND

GRILLES/DIFFUSERS:

- SUPPLY DIFFUSER
- SIDEWALL MOUNTED SUPPLY REGISTER
- RETURN GRILLE
- EXHAUST GRILLE

DOUBLE LINE DUCT SYMBOLS:

- NEW SHEET METAL DUCTWORK
- SUPPLY OR OUTSIDE AIR DUCT
- RETURN AIR DUCT
- EXHAUST AIR DUCT
- DUCTWORK TRANSITION
- DUCTWORK TRANSITION - RECTANGULAR TO ROUND
- SUPPLY DUCT ELBOW UP OR DOWN
- RETURN DUCT ELBOW UP OR DOWN
- EXHAUST DUCT ELBOW UP OR DOWN
- DUCT ELBOW WITH FIXED TURNING VANES
- DUCT BRANCH TAKE-OFF
- ROUND SPIN-IN WITH DAMPER
- SQUARE TO ROUND TAP WITH DAMPER
- FLEXIBLE DUCT CONNECTION
- ELECTRIC OPERATED DAMPER
- VOLUME DAMPER
- FLEXIBLE DUCTWORK

EQUIPMENT:

- ROOF MOUNTED EXHAUST FAN
- CEILING MOUNTED EXHAUST FAN
- ROOFTOP UNIT
- MAKE-UP AIR UNIT
- THERMOSTAT - ELECTRIC
- TEMPERATURE SENSOR
- HUMIDITY SENSOR
- DUCT SMOKE DETECTOR

GENERAL REFERENCES/NOTATIONS:

- CONNECT TO EXISTING
- SQUARE NOTE DESIGNATION
- REVISION DESIGNATION
- MECHANICAL EQUIPMENT DESIGNATION
- DIFFUSER DESIGNATION AND CFM

SYMBOLS LEGEND NOTES:
1. REFER TO SPECIFICATIONS AND PLAN NOTES FOR DETAILED DESCRIPTION OF ALL DEVICES SHOWN IN THIS SCHEDULE, PROVIDED BY THIS CONTRACTOR.

GENERAL NOTES

- CONTRACTORS AND SUB-CONTRACTORS SHALL CAREFULLY REVIEW THE CONSTRUCTION DOCUMENTS. INFORMATION REGARDING THE COMPLETE WORK IS DISPERSED THROUGHOUT THE DOCUMENT SET AND CANNOT BE ACCURATELY DETERMINED WITHOUT REFERENCE TO THE COMPLETE DOCUMENT SET.
- COORDINATE WITH THE WORK OF OTHER SECTIONS. EQUIPMENT FURNISHED BY OTHERS, REQUIREMENTS OF THE OWNER, AND WITH THE CONSTRAINTS OF THE EXISTING CONDITIONS OF THE PROJECT SITE. PROVIDE DUCT RISES AND DROPS AS REQUIRED FOR FIELD INSTALLATION AND TRADE COORDINATION. NOTIFY ARCHITECT OF ANY DISCREPANCIES BEFORE STARTING WORK.
- DRAWINGS FOR HVAC WORK ARE DIAGRAMMATIC, SHOWING THE GENERAL LOCATION, TYPE, LAYOUT, AND EQUIPMENT REQUIRED. THE DRAWINGS SHALL NOT BE SCALED FOR EXACT MEASUREMENT. REFER TO ARCHITECTURAL DRAWINGS FOR DIMENSIONS. REFER TO MANUFACTURER'S STANDARD INSTALLATION DRAWINGS FOR EQUIPMENT CONNECTIONS AND INSTALLATION REQUIREMENTS. PROVIDE DUCTWORK, CONNECTIONS, ACCESSORIES, OFFSETS, AND MATERIALS NECESSARY FOR A COMPLETE SYSTEM.
- ALL WORK SHALL COMPLY WITH STATE AND LOCAL CODE REQUIREMENTS AS APPROVED AND AMENDED BY THE GOVERNING CITY. PURCHASE ALL PERMITS ASSOCIATED WITH THE WORK. OBTAIN ALL INSPECTIONS REQUIRED BY CODE.
- INSTALL EQUIPMENT PER MANUFACTURER'S INSTRUCTIONS AND MAINTAIN MANUFACTURER'S RECOMMENDED CLEARANCE.
- CONTRACT LANDLORD APPROVED ROOFING CONTRACTOR TO FLASH AND SEAL RELATED ROOF PENETRATIONS TO MAINTAIN ROOFING WARRANTY.
- INSTALL EXHAUST FAN A MINIMUM OF 10 FT FROM INTAKE AIR OPENINGS.

OWNER FURNISHED MAKE-UP AIR UNIT SCHEDULE

MARK (MAU-#)	MANUFACTURER	MODEL
	CAPTIVEAIRE	A1-D-250-15D
CONFIGURATION	DOWNFLOW	
DRIVE TYPE	DIRECT	
PERFORMANCE		
AIR FLOW (CFM)	1,952	
EXTERNAL STATIC (IN.W.C.)	0.35	
FAN SPEED (RPM)	2,138	
DX COOLING COIL		
EA (BTU/HR)	97,078.0	
TOTAL (BTU/HR)	59,300	
SENSIBLE (BTU/HR)	41,400	
DIRECT FIRED HEATER		
FUEL	NATURAL GAS	
INPUT (BTU/HR)	30,025	
HEAT OUTPUT (BTU/HR)	82,826	
ELECTRICAL		
VOLTS/Ø/HZ	208/3/60	
FAN MOTOR HP	7.7	
MCA (AMPS)	15	
MCCP (AMPS)	11.2	
CONDENSER NO. 1 MCA (AMPS)	20	
CONDENSER NO. 2 MCA (AMPS)	11.2	
CONDENSER NO. 2 MCCP (AMPS)	20	
APPROX. WEIGHT (LBS)	1,300	
ACCESSORIES	1-6	
NOTES	1	

- ACCESSORIES:
- FACTORY MOUNTED AND WIRED NEMA 3R DISCONNECT SWITCH.
 - FACTORY PROVIDED REMOVABLE ACCESS PANELS.
 - FACTORY PROVIDED MOTORIZED INTAKE DAMPER.
 - FACTORY PROVIDED WEATHER HOOD AND BIRDSCREEN ON INLET.
 - UNIT MOUNTED VARIABLE FREQUENCY DRIVE.
 - FACTORY FURNISHED 20" HIGH INSULATED ROOF CURB.

NOTES:
1) REFER TO HOOD DRAWINGS FOR ADDITIONAL INFORMATION.

AIR CURTAIN SCHEDULE

MARK (AC-#)	MANUFACTURER	MODEL
	BERNER	ALC08-1048E
AIR FLOW (CFM)		1,380
ELECTRIC HEAT		
INPUT (WATTS)	10,800	
OUTPUT (BTU/HR)	36,850	
ELECTRICAL		
VOLTS/Ø/HZ	208/3/60	
MOTOR QUANTITY	1	
MOTOR HP	1/5	
MCA (AMPS)	31.7	
MCCP (AMPS)	40	
FINISH	PER ARCHITECT	
APPROX. WEIGHT (LBS)	80	
ACCESSORIES	DRA.F.M.S.T	
NOTES	1	
ACCESSORIES:		
DRA-DECORATIVE REAR ADAPTOR, F-FILTER, MS-DOOR MICRO SWITCH, T-THERMOSTAT		
NOTES:		
1) PROVIDE WITH INTEGRAL DISCONNECT SWITCH		

GRILLE, REGISTER, AND DIFFUSER SCHEDULE

MARK	A	B	C	D	E	F	G
MANUFACTURER	TITUS	TITUS	TITUS	TITUS	TITUS	TITUS	TITUS
MODEL	TMS-AA	300FL	355FL	TMS	R-300F	R-300F	355FL
TYPE	SQUARE CONE DIFFUSER	LOUVERED SUPPLY REGISTER	LOUVERED RETURN GRILLE	SQUARE CONE DIFFUSER	ROUND SUPPLY DIFFUSER	ROUND SUPPLY DIFFUSER	LOUVERED RETURN GRILLE
NECK SIZE (L"xW")	SEE PLAN	10"x10"	SEE PLAN	SEE PLAN	12" ROUND	10" ROUND	SEE PLAN
FACE SIZE (L"xW")	24"x24"	12"x12"	24"x24"	12"x12"	14" ROUND	12" ROUND	24"x24"
FRAME TYPE	LAY-IN SURFACE	LAY-IN SURFACE	LAY-IN SURFACE	LAY-IN SURFACE	LAY-IN SURFACE	LAY-IN SURFACE	LAY-IN SURFACE
FINISH	PER ARCHITECT	PER ARCHITECT	PER ARCHITECT	PER ARCHITECT	PER ARCHITECT	PER ARCHITECT	PER ARCHITECT
NOISE CRITERIA LEVEL	<30	OBD	OBD,TRM,STR	<30	OBD, TRM	TRM	<30
ACCESSORIES							STR
NOTES							
ACCESSORIES:							
OBD-OPPOSED BLADE DAMPER, TRM-RAPID MOUNT SHEETROCK FRAME, STR-SQUARE TO ROUND TRANSITION							
NOTES:							
1) PROVIDE RAPID MOUNT SHEETROCK FRAME FOR GRILLE INSTALLED IN GYPSUM BOARD CEILING							

ROOFTOP UNIT SCHEDULE - LANDLORD PROVIDED

MARK (RTU-#)	X1	X2
MANUFACTURER	DAIKIN	DAIKIN
MODEL	DFG120	DFG120
AIR FLOW (CFM)	3,600	3,200
EA FLOW (CFM)	450	300
AMBIENT OAT (°F)	110	110
EXTERNAL STATIC (IN. W.C.)	0.8	0.8
DX COOLING COIL		
EA1 (TDS/HR)	79,484.6	80,677.3
TOTAL (BTU/HR)	116,000	116,000
GAS HEAT		
FUEL	NATURAL GAS	NATURAL GAS
INPUT (BTU/HR)	240,000	240,000
OUTPUT (BTU/HR)	194,400	194,400
ELECTRICAL		
VOLTS/Ø/HZ	208/3/60	208/3/60
UNIT MCA	50	50
MCCP AMPS	60	60
APPROX. WEIGHT (LBS)	1,300	1,300
NOTES	2-6	1-6

- NOTES:
- MECHANICAL CONTRACTOR TO PROVIDE RAWAL DEVICES, INC. APR CONTROL. COORDINATE WITH RAWAL TO PROVIDE THE APPROPRIATE MODEL NUMBER BASED ON UNIT COMPRESSOR SIZE.
 - MECHANICAL CONTRACTOR TO FIELD INSTALL WEATHER HOOD WITH BIRD SCREEN AT UNIT INLET.
 - ELECTRICAL CONTRACTOR TO PROVIDE DISCONNECT SWITCH.
 - SET MINIMUM OUTSIDE AIR AS SPECIFIED ABOVE. FIELD SET 2 MINIMUM POSITIONS TO MAINTAIN SCHEDULED OUTSIDE AIR FLOW RATE AT SUPPLY FAN MINIMUM AND MAXIMUM SPEEDS. OUTSIDE AIR DAMPER SHALL FULLY CLOSE ON UNIT SHUTDOWN.
 - MECHANICAL CONTRACTOR TO FIELD INSTALL CONDENSATE OVERFLOW SWITCH.
 - ELECTRICAL CONTRACTOR TO PROVIDE POWERED WEATHERPROOF GFCI CONVENIENCE OUTLET.

EXHAUST AND VENTILATION FAN SCHEDULE

MARK (EF-#)	1	2,3
MANUFACTURER	CAPTIVEAIRE	GREENHECK
MODEL	DUS8FA	SP-A200
TYPE	UPBLAST	CEILING MOUNTED
DRIVE TYPE	DIRECT	DIRECT
PERFORMANCE		
AIR FLOW (CFM)	2,381	100
EXT. STATIC (IN.W.C.)	1.0	0.5
FAN SPEED (RPM)	1,567	900
ELECTRICAL		
VOLTS/Ø/HZ	120/1/60	120/1/60
FAN MOTOR HP	1.0	0.3
FAN MOTOR WATTS	-	39
MCA (AMPS)	14.5	1
MCCP (AMPS)	25	15
ACCESSORIES	GDC,RC,W/P	BD,DS,SC
APPROX. WEIGHT (LBS)	150	15
SERVES	HOOD #1	RESTROOM
NOTES	1-3	4

ACCESSORIES:
BD-BACKDRAFT DAMPER, DS-DISCONNECT SWITCH, GDC-GREASE DRAIN AND CUP, RC-ROOF CURB, SC-FACTORY MOUNTED AND WIRED SPEED CONTROLLER, WP-NEMA 3R DISCONNECT SWITCH

- NOTES:
- FAN IS OWNER FURNISHED. REFER TO FOOD SERVICE DRAWINGS FOR ADDITIONAL INFORMATION.
 - VARIABLE FREQUENCY DRIVE IS PROVIDED WITH HOOD CONTROL PANEL.
 - FAN SHALL BE CONTROLLED BY SWITCH AT CAPTIVE AIRE HOOD. INTERLOCK RTU-X1 AND RTU-X2 TO OPERATE IN OCCUPIED MODE WHILE HOOD EXHAUST FAN IS ENERGIZED.
 - INTERLOCK FAN WITH ROOM LIGHT SWITCH.

AIR BALANCE SCHEDULE

	RTU-X1	RTU-X2	EF-1	EF-2	EF-3	MAU-1	TOTALS
OUTSIDE AIR FLOW (CFM)	400	900	0	0	0	0	1,952
RETURN AIR FLOW (CFM)	3,200	2,300	0	0	0	0	5,500
SUPPLY AIR FLOW (CFM)	3,600	3,200	0	0	0	0	1,952
EXHAUST AIR FLOW (CFM)	0	0	2,381	100	100	0	2,581
BUILDING PRESSURE (CFM)	400	900	-2,381	-100	-100	0	1,952
							671
RESULTING BUILDING PRESSURIZATION (CFM)							

zebra

ZEBRA PROJECTS, INC.
14614 N KIERLAND BLVD, SUITE N300
SCOTTSDALE, ARIZONA 85254
PHONE: 480.912.1169 zbr.global

Dialectic ENGINEERING

Dialectic, Inc.
1515 1st Street, Suite 100
Kearney City, MO 64108
Professional Certificate of Authorization
Number CA200 (Exp. 06/2024) Date Issued 2023

This is a part of the construction documents. Drawings, specifications and other items only need to be reviewed in accordance with the project program and not necessarily in accordance with the code. All drawings and specifications are subject to change without notice. The contractor shall be held on or used as shop drawings. Photos of work shall be taken and submitted to

HVAC COMMISSIONING

GENERAL CONTRACTOR SHALL HIRE A THIRD PARTY REGISTERED DESIGN PROFESSIONAL OR APPROVED AGENCY TO DEVELOP A COMMISSIONING PLAN THAT SHALL INCLUDE THE FOLLOWING ITEMS:

1. NARRATIVE DESCRIPTION OF ACTIVITIES THAT WILL BE ACCOMPLISHED DURING EACH PHASE OF COMMISSIONING, INCLUDING PERSONNEL INTENDED TO ACCOMPLISH EACH OF ACTIVITY.
2. LISTING OF SPECIFIC EQUIPMENT, APPLIANCES OR SYSTEMS TO BE TESTED AND DESCRIPTION OF TESTS TO BE PERFORMED.
3. FUNCTIONS TO BE TESTED, INCLUDING, BUT NOT LIMITED TO CALIBRATIONS AND ECONOMIZER CONTROLS.
4. CONDITIONS UNDER WHICH TEST WILL BE PERFORMED. AT MINIMUM, TESTING SHALL AFFIRM WINTER AND SUMMER DESIGN CONDITIONS AND FULL OUTSIDE AIR CONDITIONS.
5. MEASURABLE CRITERIA FOR PERFORMANCE.

A PRELIMINARY REPORT OF COMMISSIONING TEST PROCEDURES AND RESULTS SHALL BE COMPLETED AND CERTIFIED BY REGISTERED DESIGN PROFESSIONAL OR APPROVED AGENCY IN ACCORDANCE WITH REQUIREMENTS OF SECTION C408.2 OF THE 2015 INTERNATIONAL ENERGY CONSERVATION CODE AND PROVIDED TO PROJECT OWNER. A COPY OF THE REPORT SHALL BE MADE AVAILABLE TO CODE OFFICIAL IF REQUESTED.

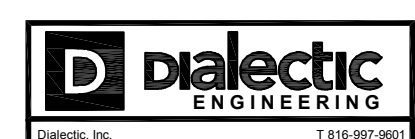
FINAL COMMISSIONING REPORT SHALL BE DUE TO PROJECT OWNER WITHIN 90 DAYS OF RECEIPT OF CERTIFICATE OF OCCUPANCY.

MECHANICAL KEY NOTES

- 1 DUCT MOUNTED SMOKE DETECTOR FURNISHED BY LANDLORD CONTRACTOR AND INSTALLED IN DUCT BY MECHANICAL CONTRACTOR. INTERLOCK WIRING BETWEEN FIRE ALARM SYSTEM RELAY AND ROOFTOP UNIT SHUTDOWN CONTACT SHALL BE PROVIDED BY MECHANICAL CONTRACTOR. ALL OTHER WIRING BY FIRE ALARM CONTRACTOR. UPON DETECTION OF SMOKE, ROOFTOP UNIT SHALL SHUT DOWN UPON SIGNAL FROM FIRE ALARM SYSTEM. COORDINATE INSTALLATION LOCATION WITH ACCESS REQUIREMENTS.
- 2 PROVIDE AIR CURTAIN. MOUNT UNIT ON WALL DIRECTLY ABOVE DOOR PER MANUFACTURER'S INSTALLATION INSTRUCTIONS.
- 3 PROVIDE REMOTE TEMPERATURE SENSOR COMPATIBLE WITH THERMOSTAT. MOUNT SENSOR 48" ABOVE FINISHED FLOOR.
- 4 PROVIDE HONEYWELL WI-FI VISION PRO 8000 TOUCHSCREEN 7-DAY PROGRAMMABLE THERMOSTAT WITH AUTO-CHANGEOVER AND AUTOMATIC START CAPABILITY. MOUNT THERMOSTAT 48" ABOVE FINISHED FLOOR. COORDINATE FINAL INSTALLATION LOCATION OF THERMOSTAT WITH OWNER'S REPRESENTATIVE.
- 5 INSTALL OWNER FURNISHED TYPE I GREASE EXHAUST HOOD. SUPPORT HOOD PER MANUFACTURER'S INSTALLATION INSTRUCTIONS. PROVIDE TRAPEZE HANGERS FOR ALL THREAD SUPPORT UNDER DUCTWORK AS REQUIRED. REFER TO HOOD DRAWINGS IN FOOD SERVICE SET FOR HOOD SPECIFICATION AND ADDITIONAL INFORMATION INCLUDING BALANCE OF MAKEUP AND CONDITIONED SUPPLY AIR TO HOOD.
- 6 INSTALL OWNER FURNISHED UL-2221 LISTED DOUBLE-WALL GREASE DUCT EQUAL TO CAPTIVEAIRE SYSTEMS MODEL DW-3R OR 3Z ROUND 20 GAUGE 430 STAINLESS INNER DUCT INSULATED WITH A 24 GAUGE 430 STAINLESS OUTER SHELL. FROM HOOD COLLAR EXHAUST FAN ON ROOF. INSTALL EXHAUST DUCT PER MANUFACTURER'S INSTRUCTIONS. PROVIDE CLEANOUTS AT EVERY CHANGE OF DIRECTION IN THE DUCT AND/OR EVERY 10 FEET WITH MINIMUM OF 3 FEET OF CLEARANCE IN FRONT OF CLEAN-OUT. COORDINATE ROUTING OF DUCTWORK WITH OWNER'S CAPTIVEAIRE REPRESENTATIVE.
- 7 UNDERCUT RESTROOM DOOR 1" FOR TRANSFER AIR.
- 8 REFER TO HOOD DRAWINGS FOR BALANCE OF MAKEUP AND CONDITIONED SUPPLY AIR TO HOODS.
- 9 DUCT UP TO EQUIPMENT ON ROOF. REFER TO SHEET M200 FOR EQUIPMENT LOCATION.
- 10 PROVIDE CEILING MOUNTED EXHAUST FAN. TRANSITION FROM FAN DISCHARGE TO DUCT SIZE SHOWN AND EXTEND UP THROUGH ROOF.
- 11 INSTALL BOTTOM OF ROUND DIFFUSER TO MATCH CEILING CLOUD HEIGHT.
- 12 PROVIDE YOUNG REGULATOR MODEL 830ACC RECTANGULAR CABLE CONTROLLED OPPOSED BLADE BALANCING DAMPER, MODEL 270-301EZ BOWDEN CABLE CONTROL KIT, AND BOW CONTROL WIRE AND CASINGS. COORDINATE INSTALLATION LOCATION WITH ARCHITECT AND MOUNT CABLE CONTROLLER IN CEILING IN ACCORDANCE WITH MANUFACTURER'S RECOMMENDATIONS.
- 13 ELBOW END OF RETURN DUCT UP 4".
- 14 PROVIDE 24"x24" ACCESS PANEL IN CEILING. COORDINATE TYPE AND COLOR WITH ARCHITECT.
- 15 CEILING ACCESS PANEL. REFER TO ARCHITECTURAL DRAWINGS FOR MORE INFORMATION. ENSURE DUCTWORK IS ROUTED HIGH ENOUGH ABOVE ACCESS PANEL AS TO NOT HINDER ACCESS TO ITEMS ABOVE CEILING.



ZEBRA PROJECTS, INC.
14814 N KIERLAND BLVD., SUITE N300
SCOTTSDALE, ARIZONA 85254
PHONE: 480.912.1169 zbr.global



dialectic
ENGINEERING
2110 W. 10th Street, Suite 101
Tulsa, Oklahoma 74108
Phone: 918.438.1100
www.dialecticeng.com

STORE NO.:



REVISIONS / ISSUES

NO.	DATE	DESCRIPTION
1	02-17-23	PERMIT / BID ISSUE
1	03-15-23	LL COMMENTS
2	03-16-23	HEALTH COMMENTS
3	07-12-23	CAVA COMMENTS
4	09-01-23	CAVA COMMENTS
5	09-18-23	CAVA COMMENTS
6	10-04-23	CAVA COMMENTS

STATUS:
ISSUE FOR CONSTRUCTION



FIELD VERIFICATION:
The Contractor shall verify all figured dimensions and conditions at the project site and notify Zebra Projects, Inc. of any dimensional errors, omissions or discrepancies before beginning or fabricating any work. Do not scale these drawings.

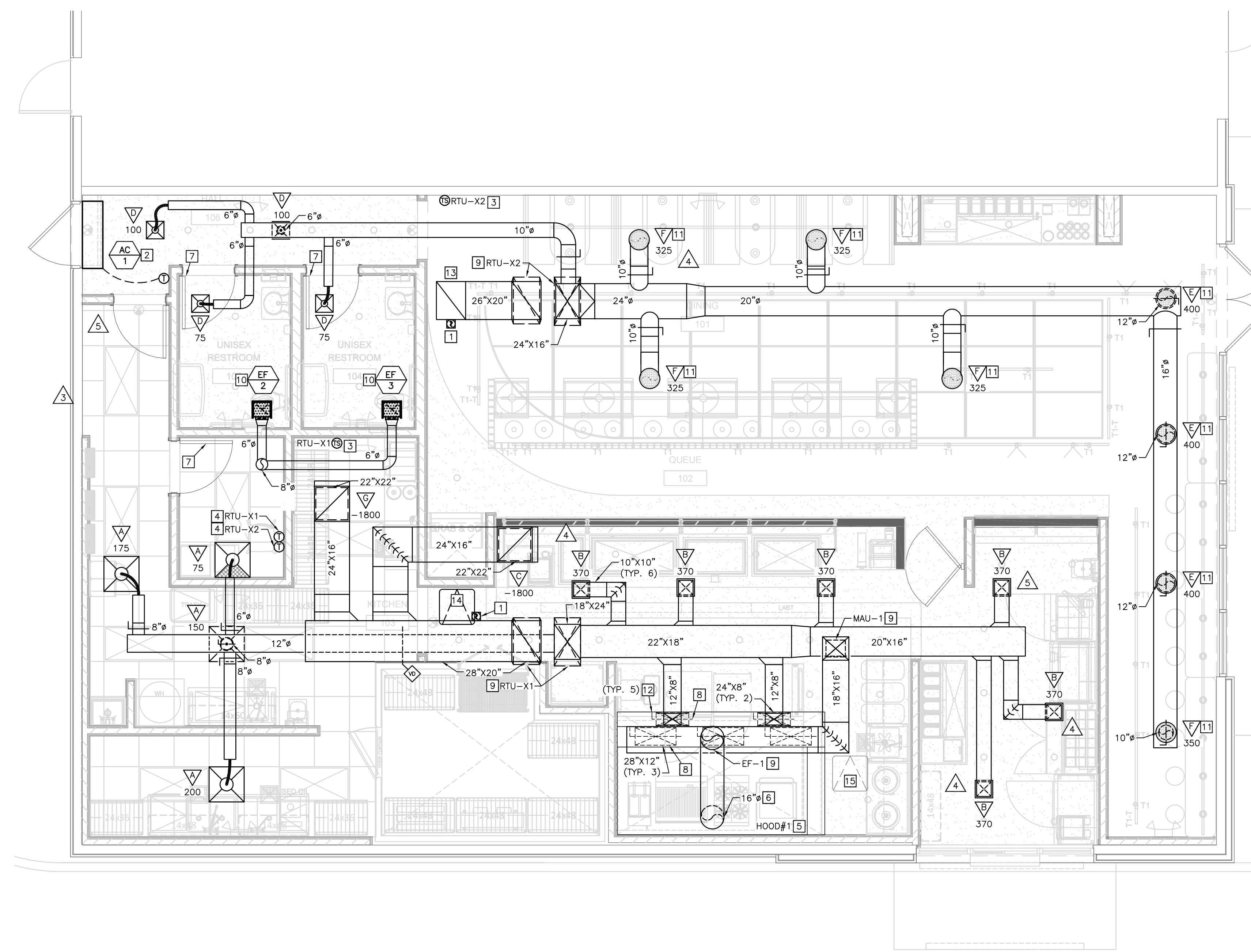
COPYRIGHT © 2023:
Zebra Projects, Inc. shall retain all common law, statutory and all other reserved rights. Neither the documents nor the information herein is to be reproduced, distributed, disclosed or otherwise without the written consent of Zebra Projects, Inc.

SHEET NAME:
MECHANICAL PLAN

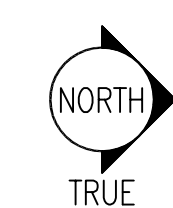
DATE: 10-04-23 PROJECT NO.: 35693

DRAWN: VOC SCALE: AS NOTED

SHEET NO.: M100



01 MECHANICAL PLAN
1/4" = 1'-0"



5

4

3

2

1

E

D

C

B

A

MECHANICAL KEY NOTES

- LANDLORD PROVIDED ROOFTOP UNIT AND CURB. COORDINATE UNIT WITH STRUCTURE. SHIM UNIT AND CURB LEVEL FOR PROPER CONDENSATE DRAINAGE. PROVIDE FLEXIBLE CONNECTORS ON SUPPLY AND RETURN AIR DUCT CONNECTIONS. TRANSITION TO DUCT SIZES SHOWN ON SHEET M100.
- INSTALL OWNER FURNISHED MAKEUP AIR UNIT AND ROOF CURB. SHIM UNIT AND CURB LEVEL. PROVIDE FLEXIBLE CONNECTOR ON SUPPLY AIR DUCT CONNECTION. TRANSITION TO DUCT SIZES SHOWN ON SHEET M100.
- INSTALL OWNER FURNISHED ROOF MOUNTED EXHAUST FAN AND CURB.
- MAINTAIN A MINIMUM 10'-0" CLEARANCE FROM EXHAUST DISCHARGE TO OUTSIDE AIR INTAKES.
- EXTEND 8" EXHAUST DUCT UP THROUGH ROOF. PROVIDE A ROOF JACK, STORM COLLAR, AND ALL-WEATHER CAP.

zebra

ZEBRA PROJECTS, INC.
14614 N KIERLAND BLVD., SUITE N300
SCOTTSDALE, ARIZONA 85254
PHONE: 480.912.1169 zbr.global

dialectic ENGINEERING

Drawn: [blank] 10/04/23
215 W. 10th Street, Suite 100
Kansas City, MO 64108
Professional Engineer License
Number CA200 Exp. 06/2024
Copyright 2023

This sheet is part of the construction documents. Drawings, specifications and other sheets shall need to be reviewed in their entirety and as for design, construction and use. They shall not be relied on or used as shop drawings. Prints of all modifications required to conform to the conditions, equipment and materials used. Verify location and dimensions of all structural and mechanical elements and their respective quantities, as these drawings are subject to change. Engineer has no liability for the accuracy of these associated records, or for any work the engineer has not signed and sealed.

STORE NO.:

CAVA

EAST 96TH STREET NORTH,
OWASSO, OKLAHOMA 74055
UNITED STATES

REVISIONS / ISSUES

NO.	DATE	DESCRIPTION
1	02-17-23	PERMIT / BID ISSUE
1	03-15-23	LL COMMENTS
2	03-16-23	HEALTH COMMENTS
3	07-12-23	CAVA COMMENTS
4	09-01-23	CAVA COMMENTS
5	09-18-23	CAVA COMMENTS
6	10-04-23	CAVA COMMENTS

STATUS:
ISSUE FOR CONSTRUCTION



FIELD VERIFICATION:
The Contractor shall verify all figured dimensions and conditions at the project site and notify Zebra Projects, INC. of any dimensional errors, omissions or discrepancies before beginning or fabricating any work. Do not scale these drawings.

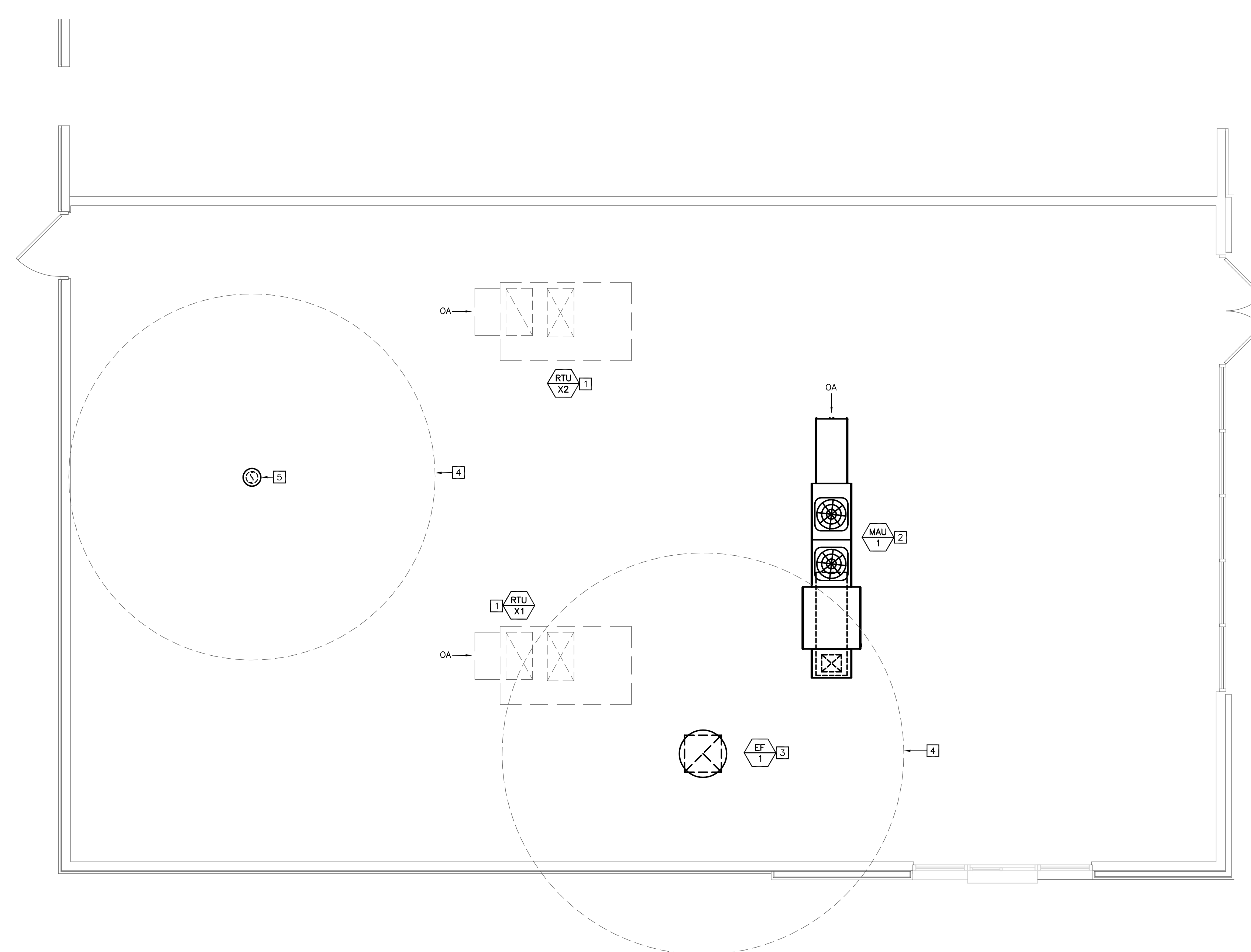
COPYRIGHT © 2023:
Zebra Projects, INC. shall retain all common law, statutory and all other reserved rights. Neither the documents nor the information herein is to be reproduced, distributed, disclosed or otherwise without the written consent of Zebra Projects, INC.

SHEET NAME:
MECHANICAL PLAN - ROOF

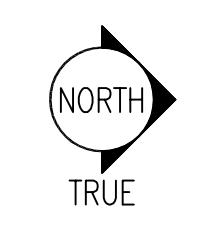
DATE: 10-04-23 PROJECT NO.: 35693

DRAWN: VOC SCALE: AS NOTED

SHEET NO.:
M200



01 MECHANICAL PLAN-ROOF
1/4" = 1'-0"



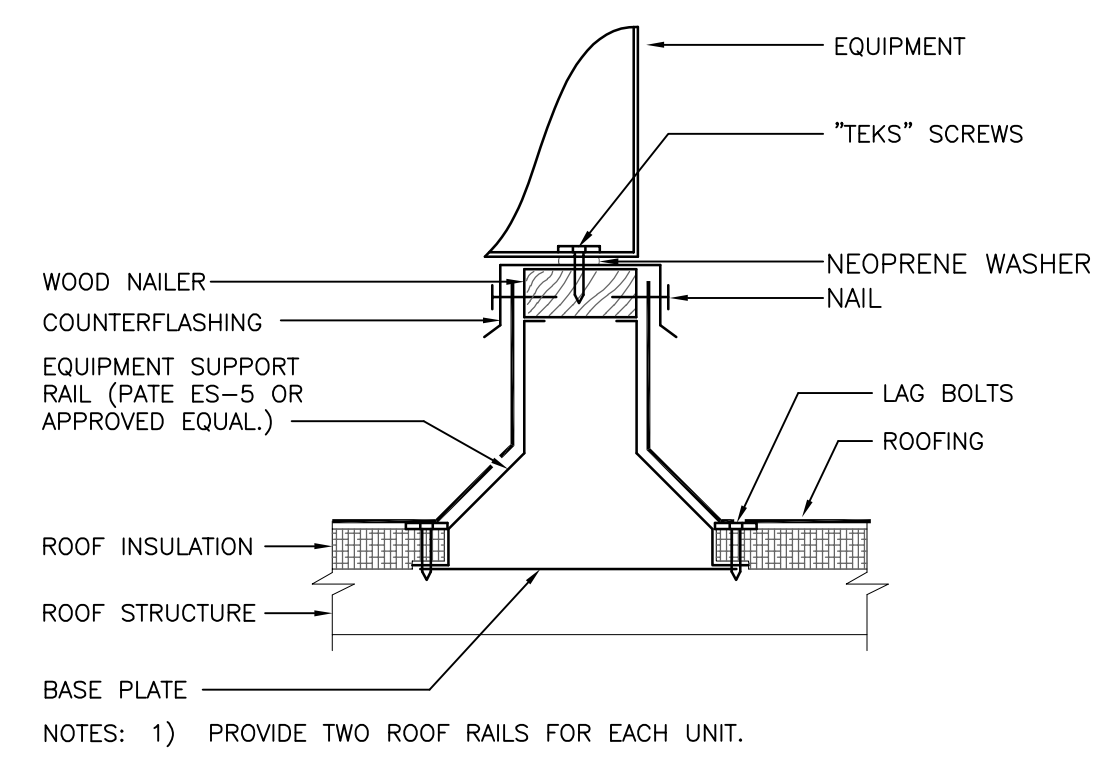
5

4

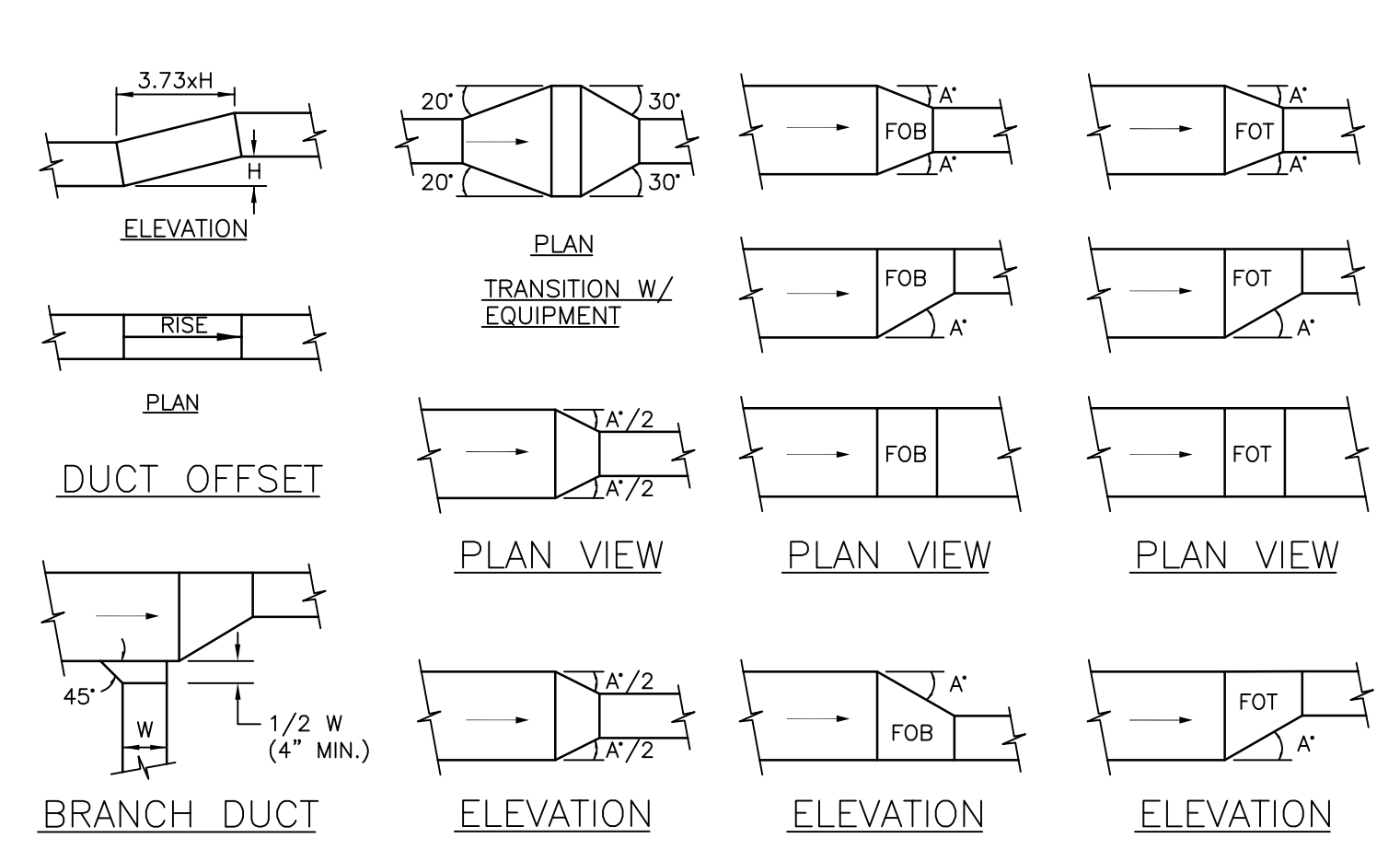
3

2

1

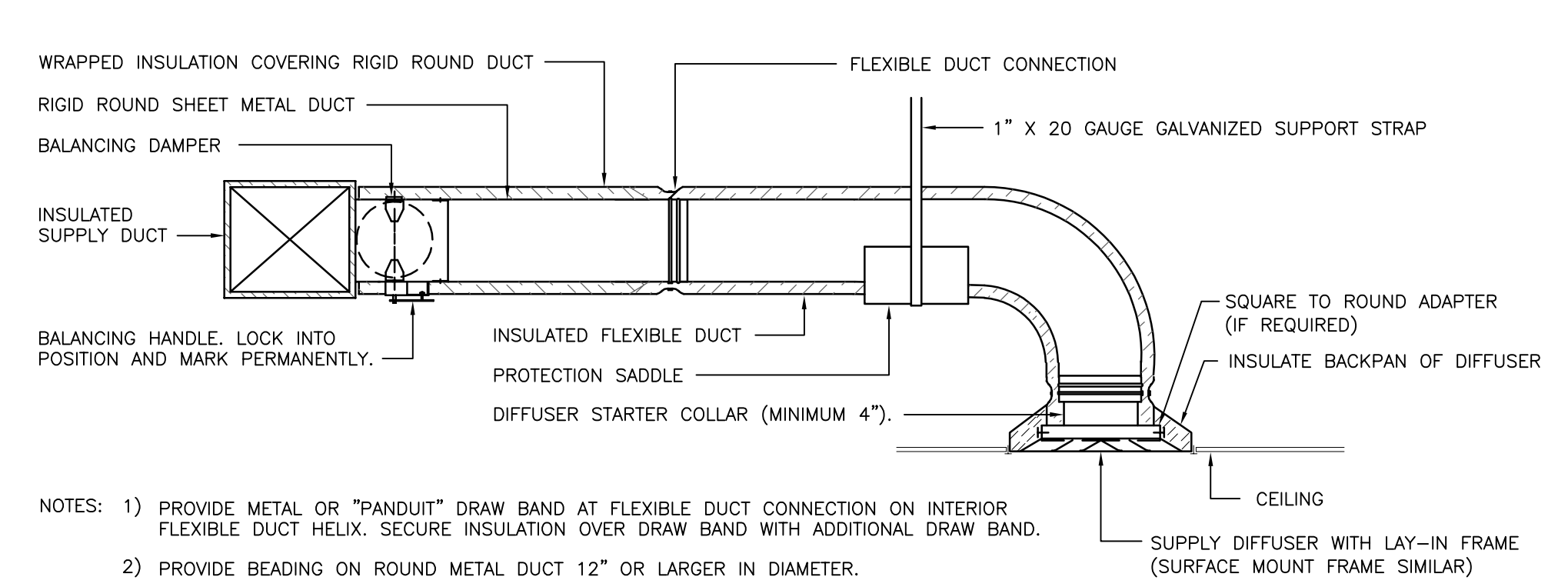


07 EQUIPMENT SUPPORT RAIL DETAIL
NOT TO SCALE



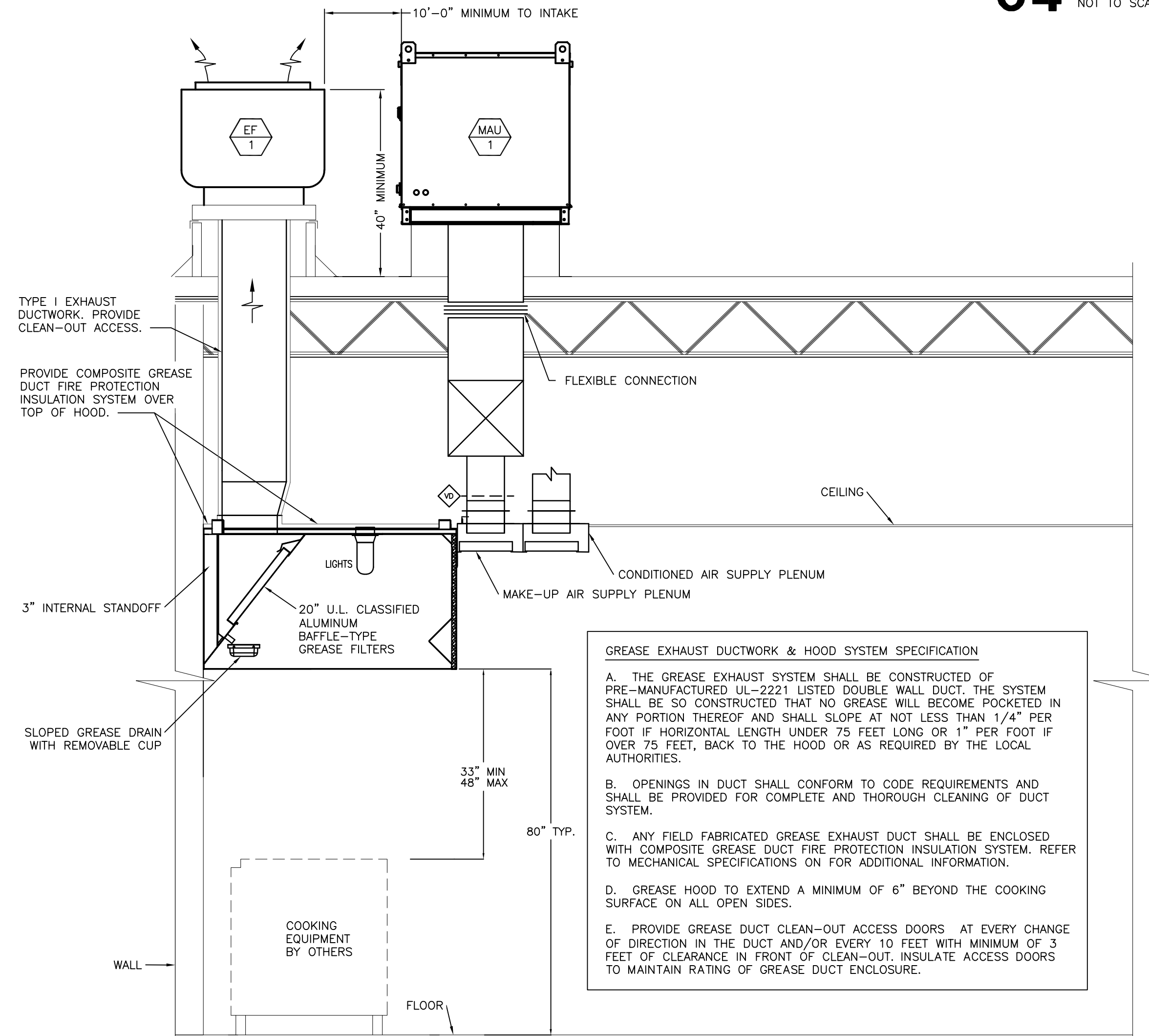
NOTES: 1) ANGLE A = 30° WHEN AIR FLOWS IN DIRECTION OF ARROW (SUPPLY AIR).
2) ANGLE A = 20° WHEN AIR FLOWS IN OPPOSITE DIRECTION OF ARROW (RETURN OR EXHAUST).

04 LOW VELOCITY DUCT FITTINGS DETAIL
NOT TO SCALE



NOTES: 1) PROVIDE METAL OR "PANDUIT" DRAW BAND AT FLEXIBLE DUCT CONNECTION ON INTERIOR FLEXIBLE DUCT HELIX. SECURE INSULATION OVER DRAW BAND WITH ADDITIONAL DRAW BAND.
2) PROVIDE BEADING ON ROUND METAL DUCT 12" OR LARGER IN DIAMETER.
3) PROVIDE MINIMUM 4" COLLARS FOR ATTACHMENT OF FLEXIBLE DUCT TO ROUND DUCT, DAMPERS AND DIFFUSERS.
4) BAND RIGID ROUND DUCT INSULATION TO DUCT AND PROVIDE TAPE FOR INSULATION OVERLAP.

01 DIFFUSER CONNECTION DETAIL
NOT TO SCALE



GREASE EXHAUST DUCTWORK & HOOD SYSTEM SPECIFICATION

A. THE GREASE EXHAUST SYSTEM SHALL BE CONSTRUCTED OF PRE-MANUFACTURED UL-2221 LISTED DOUBLE WALL DUCT. THE SYSTEM SHALL BE SO CONSTRUCTED THAT NO GREASE WILL BECOME POCKETED IN ANY PORTION THEREOF AND SHALL SLOPE AT NOT LESS THAN 1/4" PER FOOT IF HORIZONTAL LENGTH UNDER 75 FEET LONG OR 1" PER FOOT IF OVER 75 FEET, BACK TO THE HOOD OR AS REQUIRED BY THE LOCAL AUTHORITIES.

B. OPENINGS IN DUCT SHALL CONFORM TO CODE REQUIREMENTS AND SHALL BE PROVIDED FOR COMPLETE AND THOROUGH CLEANING OF DUCT SYSTEM.

C. ANY FIELD FABRICATED GREASE EXHAUST DUCT SHALL BE ENCLOSED WITH COMPOSITE GREASE DUCT FIRE PROTECTION INSULATION SYSTEM. REFER TO MECHANICAL SPECIFICATIONS ON FOR ADDITIONAL INFORMATION.

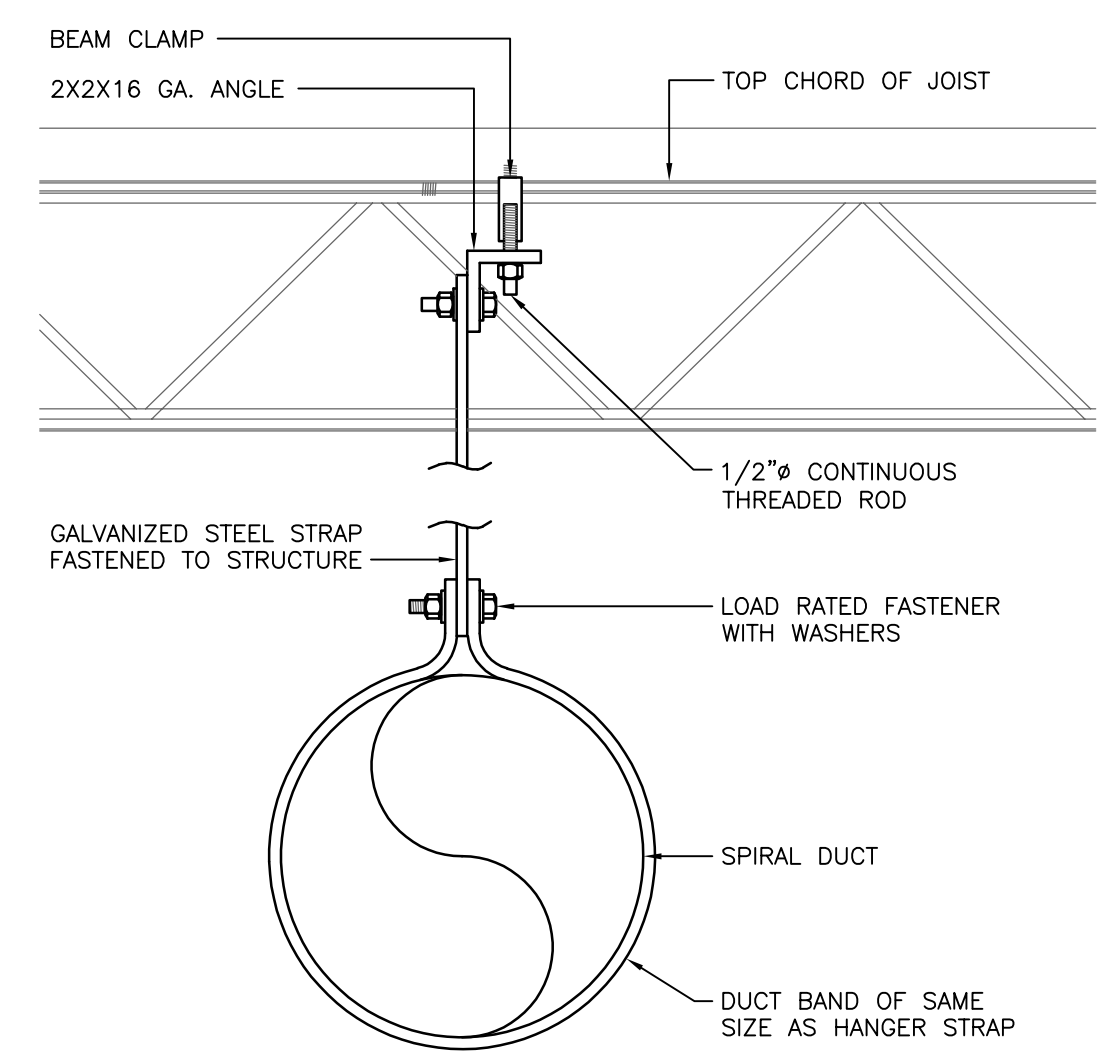
D. GREASE HOOD TO EXTEND A MINIMUM OF 6" BEYOND THE COOKING SURFACE ON ALL OPEN SIDES.

E. PROVIDE GREASE DUCT CLEAN-OUT ACCESS DOORS AT EVERY CHANGE OF DIRECTION IN THE DUCT AND/OR EVERY 10 FEET WITH MINIMUM OF 3 FEET OF CLEARANCE IN FRONT OF CLEAN-OUT. INSULATE ACCESS DOORS TO MAINTAIN RATING OF GREASE DUCT ENCLOSURE.

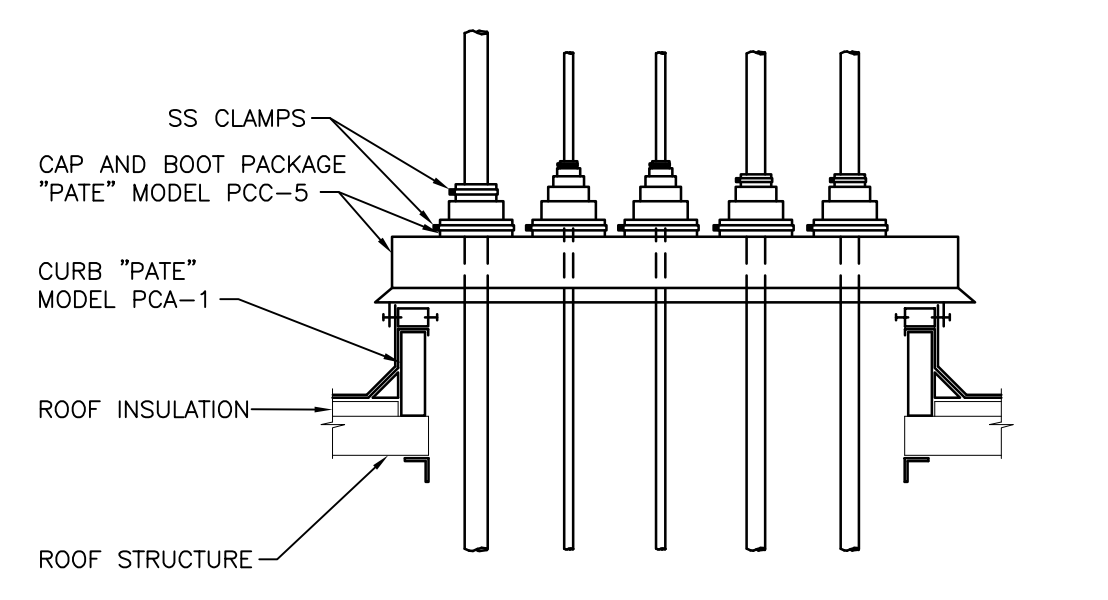
NOTES:

1. PROVIDE UL LISTED TYPE I EXHAUST HOOD.
2. THE GREASE HOOD SHALL MEET THE REQUIREMENTS OF THE MECHANICAL CODE, NSF AND NFPA FOR A TYPE I HOOD.
3. FIRE DEPARTMENT APPROVAL SHALL BE REQUIRED ON FIRE PROTECTION SYSTEM FOR GREASE HOODS AND DUCTS AS REQUIRED BY THE MECHANICAL CODE AND AS REQUIRED BY THE FIRE CODE.
4. PROVIDE CHEMICAL FIRE SUPPRESSION SYSTEM AS REQUIRED BY NFPA 17A.
5. PERFORM SMOKE TEST ON GREASE EXHAUST DUCTWORK AFTER DUCTWORK INSTALLATION IS COMPLETE BUT PRIOR TO DUCTWORK CONCEALMENT PER REQUIREMENTS OF LOCAL CODE AUTHORITIES.

08 KITCHEN HOOD SCHEMATIC
NOT TO SCALE



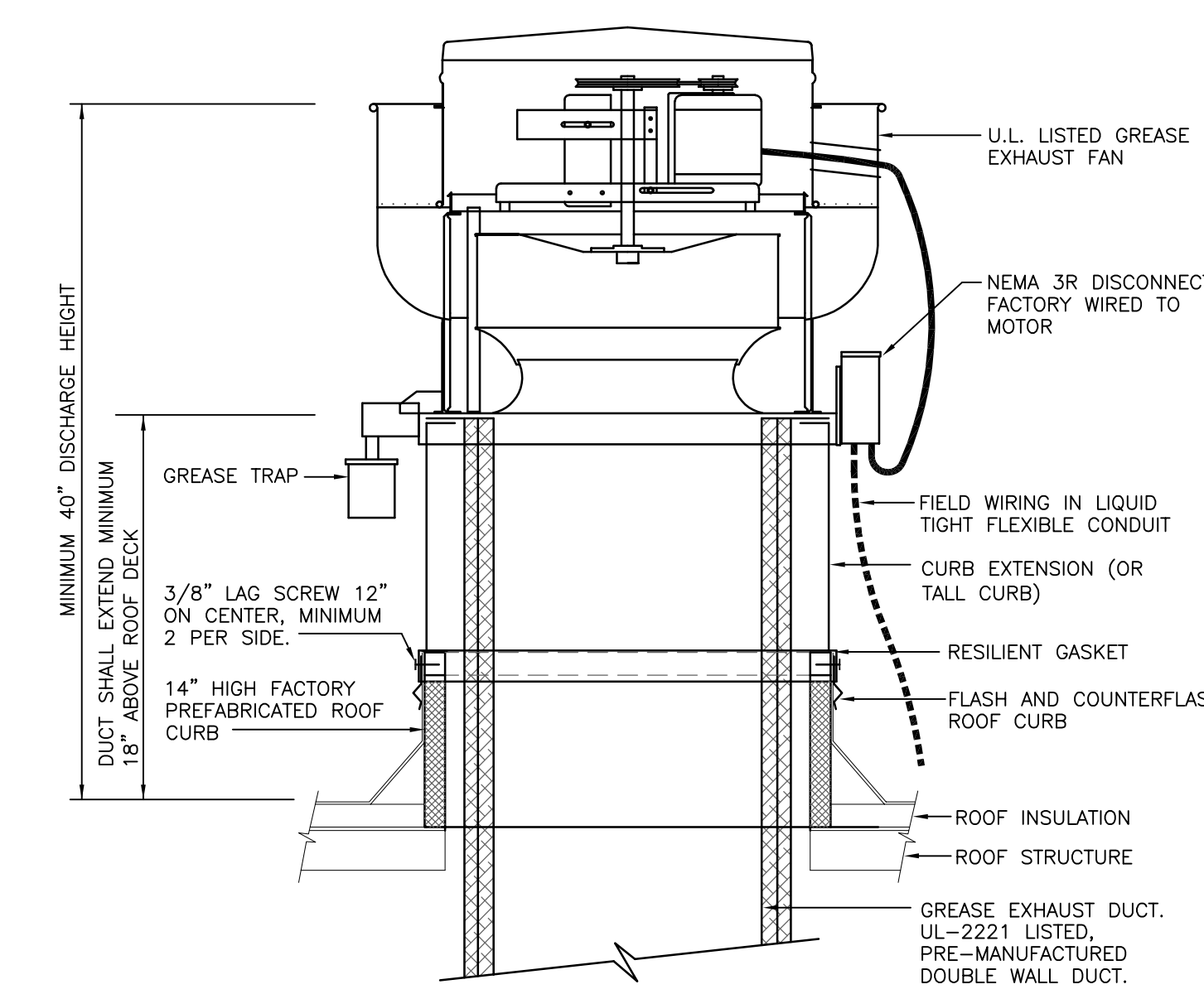
05 SPIRAL DUCT SUPPORT DETAIL
NOT TO SCALE



NOTES:

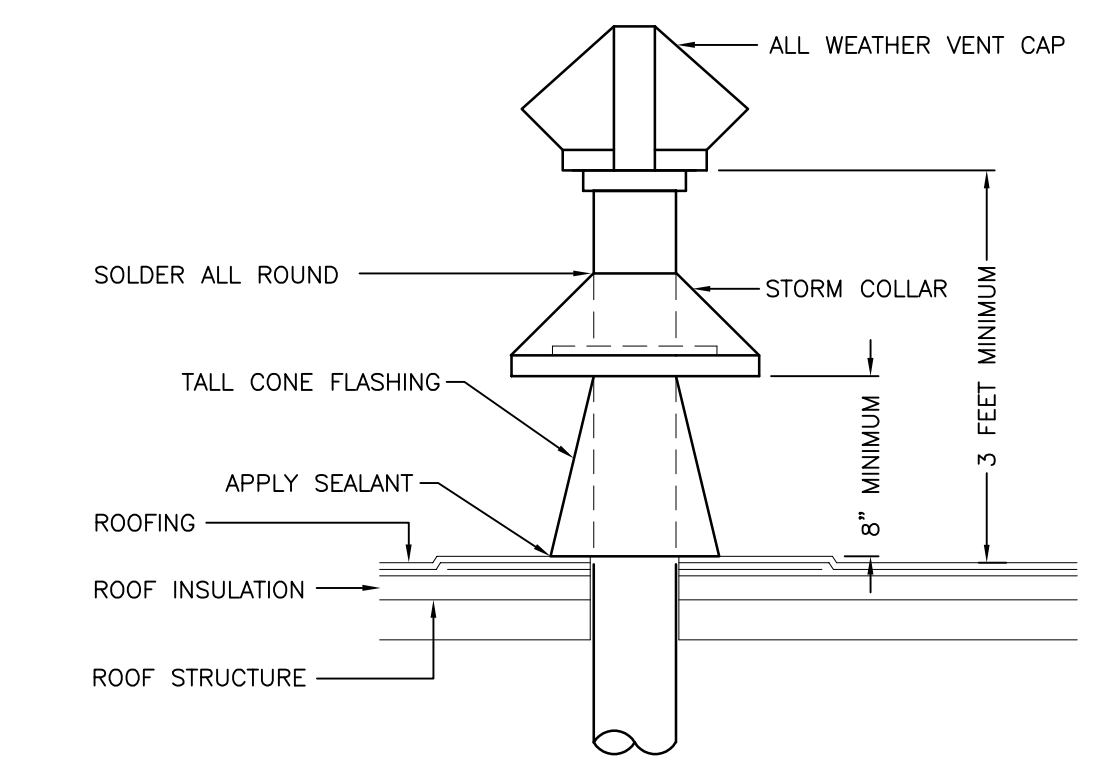
1. USE SINGLE ROOF PENETRATION FOR ALL CONTROL WIRING, POWER WIRING, AND REFRIGERANT LINES.
2. INSULATE REFRIGERANT LINES PER MANUFACTURER'S RECOMMENDATIONS.

06 PIPE ROOF PENETRATION DETAIL
NOT TO SCALE

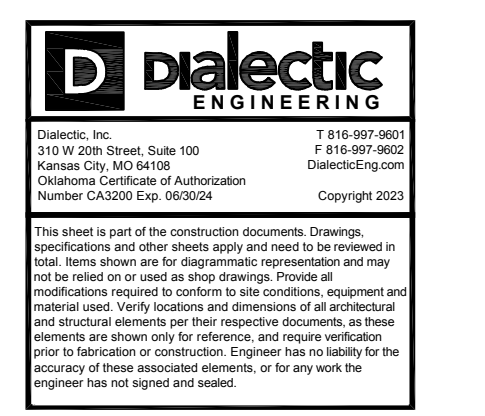


NOTE: INSTALLATION SHALL BE IN ACCORDANCE WITH NFPA 96 REQUIREMENTS.

02 ROOF MOUNTED GREASE EXHAUST FAN DETAIL
NOT TO SCALE



03 DUCT THROUGH ROOF DETAIL
NOT TO SCALE



STORE NO:



REVISIONS / ISSUES

NO.	DATE	DESCRIPTION
1	02-17-23	PERMIT / BID ISSUE
1	03-15-23	LL COMMENTS
2	03-16-23	HEALTH COMMENTS
3	07-12-23	CAVA COMMENTS
4	09-01-23	CAVA COMMENTS
5	09-18-23	CAVA COMMENTS
6	10-04-23	CAVA COMMENTS

STATUS:
ISSUE FOR CONSTRUCTION



FIELD VERIFICATION:
The Contractor shall verify all figured dimensions and conditions at the project site and notify Zebra Projects, Inc. of any dimensional errors, omissions or discrepancies before beginning or fabricating any work. Do not scale these drawings.

COPYRIGHT © 2023:
Zebra Projects, Inc. shall retain all common law, statutory and all other reserved rights. Neither the documents nor the information herein is to be reproduced, distributed, disclosed or otherwise without the written consent of Zebra Projects, Inc.

SHEET NAME:
MECHANICAL DETAILS

DATE: 10-04-23 PROJECT NO.: 35693

DRAWN: VOC SCALE: AS NOTED

SHEET NO.:
M300