

Report By:

National TAB
1329 E. KEMPER ROAD
SUITE 4210
CINCINNATI, OH 45246



Report: TAB REPORT
Function: Test, Adjust, & Balance
Date: 11/07/2024
Completed By: National TAB

PROJECT
DOT Headquarters (Ewing, NJ)

1035 Parkway Ave.

Ewing, NJ 08618

Client

EMY Solutions Inc.
624 Montgomery Rd
Hillsborough, NJ 08844

National TAB

Project: DOT Headquarters (Ewing, NJ)

Table Of Contents

Section	Page #
Certification Page	3
AHU/RTU	4
Energy Recovery Unit	6
Fan Coil	8
Equipment List	16
Abbreviations	17
GRD Layout	18



CERTIFICATION



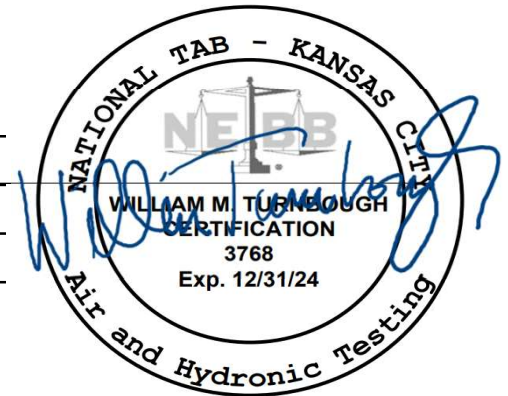
PROJECT: DOT Headquarters (Ewing, NJ)

The data presented in this report is a record of system measurements and final adjustments that have been obtained in accordance with the current edition of the NEBB Procedural Standard for Testing, Adjusting and Balancing of Environmental Systems. The measurements shown, and the information given, in this report are certified to be accurate and complete, at the time and date information was gathered. Any variances from design quantities, which exceed NEBB tolerances, are noted in the TAB report project summary.

NEBB TAB FIRM: National TAB - Kansas City
REGISTRATION NO: 3768
CERTIFIED BY: Will Turnbough
DATE: 11/7/2024

Submitted and Certified by:

NEBB TAB FIRM: National TAB - Kansas City
TAB PROFESSIONAL: Will Turnbough
REGISTRATION NO: CP-24289
CERTIFICATION EXP: 12/31/2024





National TAB

Project: DOT Headquarters (Ewing, NJ)
System/Unit: AHU/RTU



Comfort. Under Control.
www.nationaltab.com

Asset: RTU-1

AREA: MULTIPURPOSE RM

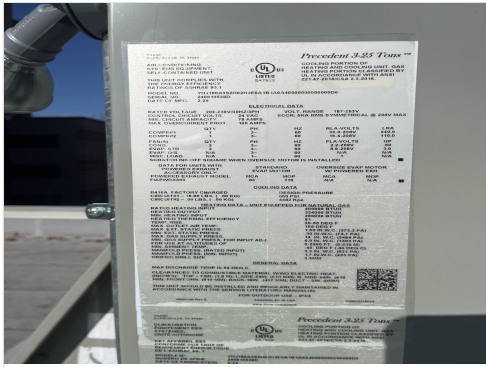
Unit Data		
	Design	Actual
MFG	NA	TRANE
Serial Num	-	240810538D
Model Num	NA	YHJ18003S0H02H2E0A1B1
Configuration	VERTICAL	VERTICAL
Num OA Filters 1	-	1
OA Filter Size 1	-	68X20
Num PreFilter 1	-	8
PreFilter Size 1	-	20X24X2

Test Data		
	Design	Actual
SF CFM	5995	5994
RA CFM	5270	5230
OA CFM	725	764
RL Voltage	208	206.3/206.2/207.3
RL Amperage	-	6.55/6.44/5.98
OA Damper Position	-	10%
Brake Horse Power	-	2.86

Motor Data		
	Design	Actual
Motor MFG	-	2X EBM PABST
Frame	-	NL
Horsepower	3.00	3000W
Motor Rpm	-	1790
Phase	3	3
Rated Voltage	208	200
Rated Amperage	-	8.8
Service Factor	-	1

Performance Data		
	Design	Actual
MA Plenum SP	-	-0.58"
Fan Suction SP	-	-0.99"
Fan Discharge SP	-	0.54"
Total ESP	0.70	1.12"
Fan Total SP	-	1.53"

Unit Data - PHOTO LOG



image_1806439161



image_1251469911

Completed By: Tyler Youells on 11/07/2024

Notes:
[1] MAX FAN SETPOINT 64%

Written By: Tyler Youells on 11/07/2024



National TAB

Project:DOT Headquarters (Ewing, NJ)

AHU/RTU



Diffuser Supply (GRD)

RTU-1/MULTIPURPOSE RM

Asset							
Asset Name	Location	Type	Size	DESIGN CFM	CFM(1)	FINAL CFM	% to design
SGRD1	MULTIPURPOSE STORAGE	A2	8	120	161	114	95.0
SGRD2	MULTIPURPOSE RM	A6	16	635	300	578	91.0
SGRD3	MULTIPURPOSE RM	A6	16	635	602	648	102.0
SGRD4	MULTIPURPOSE RM	A6	16	635	550	597	94.0
SGRD5	MULTIPURPOSE RM	A6	16	635	643	644	101.4
SGRD6	MULTIPURPOSE RM	A6	16	635	645	681	107.2
SGRD7	MULTIPURPOSE RM	A6	16	635	685	654	103.0
SGRD8	MULTIPURPOSE RM	A6	16	635	574	623	98.1
SGRD9	MULTIPURPOSE RM	A6	16	635	711	654	103.0
SGRD10	MULTIPURPOSE RM	A6	16	635	638	635	100.0
SGRD11	VESTIBULE	A2	8	160	263	166	103.8
Total				5995	5772	5994	99.98%

Completed By: Tyler Youells on 11/07/2024



National TAB

Project: DOT Headquarters (Ewing, NJ)

System/Unit: Energy Recovery Unit

NATIONAL TAB

INTELLIGENCE



Comfort. Under Control.
www.nationaltab.com

Asset: ERV-1

AREA:VRF'S

Unit Data		
	Design	Actual
MFG	NA	ALDES
Model Num	NA	E1100L-FI-EC-N
Serial Num	-	N23100012
Service	-	FCU-OA
Num Exh-Filters 1	-	3
Exh-Filter Size 1	-	15X11.5
Num OA-Filters 1	-	3
OA-Supply Size 1	-	15X11.5

Exhaust Fan Motor Data		
	Design	Actual
Motor MFG	-	2X EBMPABST
Frame	-	NL
Horsepower	-	170W
Motor Rpm	-	2510
Phase	1	1
Voltage (rated)	208	208
Amperage (rated)	-	1.4
Service Factor	-	1

OA Fan Motor Data		
	Design	Actual
Motor MFG	-	2X EBM PABST
Frame	-	NL
Horsepower	-	170W
Motor Rpm	-	2510
Phase	1	1
Voltage (rated)	208	208
Amperage (rated)	-	1.4
Service Factor	-	1

Exhaust Fan Test Data		
	Design	Actual
Exh-ERU CFM	400	372
Exh-ERU RPM	-	NA
RL Voltage	-	204.7
RL Amperage	-	0.88

Exhaust Fan Performance Data		
	Design	Actual
Exh-ERU Filter Delta SP	-	COMBINED
Exh-ERU Wheel Delta SP	-	0.21"
Exh-ERU Delta T	-	0.9F

OA Fan Test Data		
	Design	Actual
OA-ERU CFM	370	354
OA-ERU RPM	-	FULL SPEED
RL Voltage	-	207.7
RL Amperage	-	1.48

OA Fan Performance Data		
	Design	Actual
OA-ERU Filter Delta SP	-	COMBINED
OA-ERU Wheel Delta SP	-	0.15"
OA-ERU Delta T	-	2.1F

Completed By: Tyler Youells on 11/07/2024



National TAB

Project:DOT Headquarters (Ewing, NJ)

Energy Recovery Unit



Comfort. Under Control.
www.nationaltab.com

Diffuser Supply (GRD)

ERV-1/VRF'S

Asset							
Asset Name	Location	Type	Size	DESIGN CFM	CFM(1)	FINAL CFM	% to design
SGRD1	FC-1	DUCT	6	100	95	92	92.0
SGRD2	FC-3	DUCT	6	70	45	64	91.4
SGRD3	FC-2	DUCT	6	50	39	49	98.0
SGRD4	FC-4	DUCT	4	20	12	19	95.0
SGRD5	FC-5	DUCT	6	40	19	37	92.5
SGRD6	FC-6	DUCT	6	40	25	41	102.5
SGRD7	FC-7	DUCT	6	50	45	52	104.0
Total				370	280	354	95.68%

Completed By: Tyler Youells on 11/07/2024



National TAB

Project: DOT Headquarters (Ewing, NJ)
System/Unit: Fan Coil



Comfort. Under Control.
www.nationaltab.com

Asset: FC-1

AREA:CORRIDOR

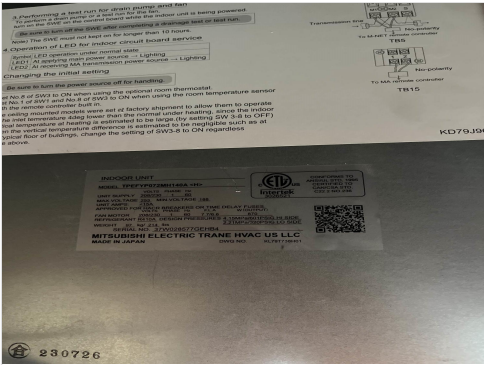
Unit Data		
	Design	Actual
MFG	NA	TRANE
Model Num	NA	TPEFYP072MH140A
Serial Num	-	37W028577GEHB4
Configuration	-	HORIZONTAL

Motor Data		
	Design	Actual
Horsepower	-	870W
Phase	1	1
Voltage (rated)	208	208
Amperage (rated)	-	7.7

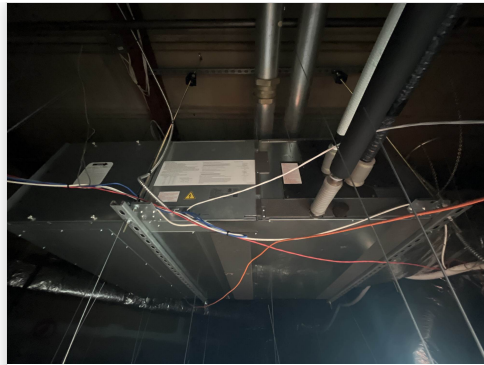
Test Data		
	Design	Actual
SFAN CFM	1780	1795
Motor Speed SetPt	-	50 Pa
RL Voltage	-	206.4
RL Amperage	-	2.14
RA CFM	1680	1703
OA CFM	100	92

Performance Data		
	Design	Actual
Suction ESP	-	-0.01"
Discharge ESP	-	0.28"
Total ESP	0.60	0.29"

Unit Data - PHOTO LOG



image_2021832413



image_544918536

Completed By: Tyler Youells on 11/07/2024



National TAB

Project:DOT Headquarters (Ewing, NJ)

Fan Coil



Comfort. Under Control.
www.nationaltab.com

Diffuser Supply (GRD)

FC-1/CORRIDOR

Asset							
Asset Name	Location	Type	Size	DESIGN CFM	CFM(1)	FINAL CFM	% to design
SGRD1	CORRIDOR	A4	12	400	379	363	90.8
SGRD2	CORRIDOR	A4	12	400	585	403	100.8
SGRD3	CORRIDOR	A4	12	400	501	428	107.0
SGRD4	CORRIDOR	A4	12	400	491	412	103.0
SGRD5	CORRIDOR	A2	8	180	216	189	105.0
Total				1780	2172	1795	100.84%

Completed By: Tyler Youells on 11/06/2024



National TAB

Project: DOT Headquarters (Ewing, NJ)
System/Unit: Fan Coil



Asset: FC-2

AREA:FAC MGMT OFC

Unit Data		
	Design	Actual
MFG	NA	TRANE
Model Num	NA	TPEFY027MA144A
Serial Num	-	3XR0051330P911
Configuration	-	HORIZONTAL

Motor Data		
	Design	Actual
Horsepower	-	0.162HP
Phase	1	1
Voltage (rated)	208	208
Amperage (rated)	-	2.03

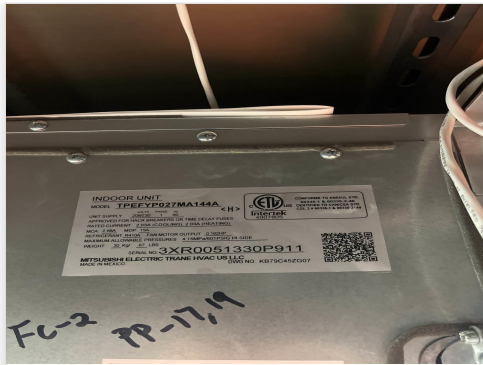
Test Data		
	Design	Actual
SFAN CFM	740	677
Motor Speed SetPt	-	150 Pa
RL Voltage	-	206.3
RL Amperage	-	1.84
RA CFM	690	628
OA CFM	50	49

Performance Data		
	Design	Actual
Suction ESP	-	-0.12"
Discharge ESP	-	0.63"
Total ESP	0.60	0.75"

Unit Data - PHOTO LOG



image_767314476



image_1473006188

Completed By: Tyler Youells on 11/07/2024



National TAB

Project:DOT Headquarters (Ewing, NJ)

Fan Coil



Comfort. Under Control.
www.nationaltab.com

Diffuser Supply (GRD)

FC-2/FAC MGMT OFC

Asset							
Asset Name	Location	Type	Size	DESIGN CFM	CFM(1)	FINAL CFM	% to design
SGRD1	FAC MGMT OFC	A4	12	370	256	337	91.1
SGRD2	FAC MGMT OFC	A4	12	370	241	340	91.9
Total				740	497	677	91.49%

Completed By: Tyler Youells on 11/06/2024

Asset	Notes	Date	Written By
SGRD1	[1] DIFFUSER INSTALLED AS 8"	11/07/2024	Tyler Youells
SGRD2	[1] DIFFUSER INSTALLED AS 8"	11/07/2024	Tyler Youells



National TAB

Project: DOT Headquarters (Ewing, NJ)
System/Unit: Fan Coil



Asset: FC-3

AREA:OFFICE

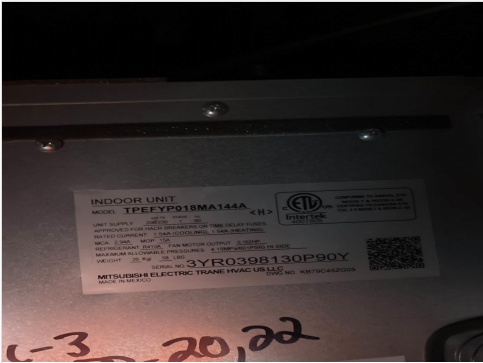
Unit Data		
	Design	Actual
MFG	NA	TRANE
Model Num	NA	TPEFYP018MA144A
Serial Num	-	3YR0398130P90Y
Configuration	-	HORIZONTAL

Motor Data		
	Design	Actual
Horsepower	-	0.162
Phase	1	1
Voltage (rated)	208	208
Amperage (rated)	-	1.54

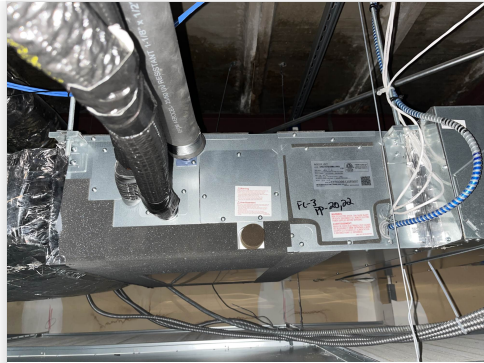
Test Data		
	Design	Actual
SFAN CFM	500	521
Motor Speed SetPt	-	50Pa
RL Voltage	-	206.3
RL Amperage	-	0.77
RA CFM	430	457
OA CFM	70	64

Performance Data		
	Design	Actual
Suction ESP	-	-0.07"
Discharge ESP	-	0.14"
Total ESP	0.60	0.21"

Unit Data - PHOTO LOG



image_1092711546



image_881523781

Completed By: Tyler Youells on 11/07/2024



National TAB

Project:DOT Headquarters (Ewing, NJ)

Fan Coil



Comfort. Under Control.
www.nationaltab.com

Diffuser Supply (GRD)

FC-3/OFFICE

Asset							
Asset Name	Location	Type	Size	DESIGN CFM	CFM(1)	FINAL CFM	% to design
SGRD1	OFFICE 1	A2	8	185	204	189	102.2
SGRD2	CORRIDOR	A2	8	130	170	139	106.9
SGRD3	OFFICE 1	A2	8	185	162	193	104.3
Total				500	536	521	104.2%

Completed By: Tyler Youells on 11/06/2024



National TAB

Project: DOT Headquarters (Ewing, NJ)
System/Unit: Fan Coil



Comfort. Under Control.
www.nationaltab.com

Asset: FC-7

AREA:OFFICE 2,3

Unit Data		
	Design	Actual
MFG	NA	TRANE
Model Num	NA	TPEFYP018MA144A
Serial Num	-	39R0357630P90Y
Configuration	-	HORIZONTAL

Motor Data		
	Design	Actual
Horsepower	-	0.162HP
Phase	1	1
Voltage (rated)	208	208
Amperage (rated)	-	1.54

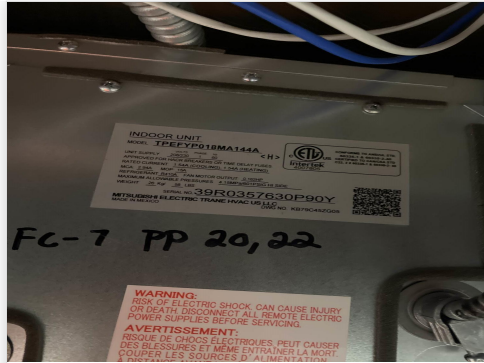
Test Data		
	Design	Actual
SFAN CFM	420	434
Motor Speed SetPt	-	35 Pa
RL Voltage	-	207.4
RL Amperage	-	0.60
RA CFM	370	382
OA CFM	50	52

Performance Data		
	Design	Actual
Suction ESP	-	-0.06"
Discharge ESP	-	0.16"
Total ESP	0.60	0.22"

Unit Data - PHOTO LOG



image_1505105255



image_1868759971

Completed By: Tyler Youells on 11/07/2024



National TAB

Project:DOT Headquarters (Ewing, NJ)

Fan Coil



Comfort. Under Control.
www.nationaltab.com

Diffuser Supply (GRD)

FC-7/OFFICE 2,3

Asset							
Asset Name	Location	Type	Size	DESIGN CFM	CFM(1)	FINAL CFM	% to design
SGRD1	OFFICE 2	A2	8	200	230	214	107.0
SGRD2	OFFICE 3	A2	8	220	292	220	100.0
Total				420	522	434	103.33%

Completed By: Tyler Youells on 11/06/2024



National TAB

Testing, Adjusting, and Balancing Equipment



Function		Range	Minimum Accuracy	Instrument Information	Calibration Date	Date Due
AIR	AIR PRESSURE	0 in wg to 10 in wg	2% +/- 0.001 in wg	Evergreen S-PVF-1 24D-00509	6/17/2024	6/17/2025
	AIR VELOCITY INSTRUMENT	50 fpm to 3900 fpm	+/- 5 % +/- 7 fpm	Evergreen S-PVF-1 24D-00509	6/17/2024	6/17/2025
	DIRECT HOOD READING	100 cfm to 2000 cfm	+/- 5 % +/- 7 cfm	Evergreen S-PVF-1 24D-00509	6/17/2024	6/17/2025
TEMPERATURE	AIR METER	-20 F to 240 F	+/- .5 % 2 F	Cooper SRH77A S/N 100516003	9/18/2024	9/18/2025
	AIR PROBE	-20 F to 240 F	+/- .5 % 2 F	Cooper SRH77A S/N 100516003	9/18/2024	9/18/2025
	IMMERSION METER	-20 F to 240 F	+/- .5 % 2 F	Cooper SRH77A S/N 100516003	9/18/2024	9/18/2025
	IMMERSION PROBE	-20 F to 240 F	+/- .5 % 2 F	Cooper SRH77A S/N 100516003	9/18/2024	9/18/2025
	CONTACT METER	-20 F to 240 F	+/- .5 % 2 F	Cooper SRH77A S/N 100516003	9/18/2024	9/18/2025
	CONTACT PROBE	-20 F to 240 F	+/- .5 % 2 F	Cooper SRH77A S/N 100516003	9/18/2024	9/18/2025
HUMIDITY	HUMIDITY PROBE	10 % RH to 90 % RH	3% of reading	Cooper SRH77A S/N 100516003	9/18/2024	9/18/2025
ELECTRICAL	VOLTAGE MEASUREMENT	0 VAC to 600 VAC	2 % reading +/- 5 digits	Klein Tools CL800 S/N 1220C-C1	9/18/2024	9/18/2025
	AMPERAGE MEASUREMENT	0 Amperers to 100 Amperes	2 % reading +/- 5 digits	Klein Tools CL800 S/N 1220C-C1	9/18/2024	9/18/2025
ROTATION	ROTATION MEASUREMENT	60 rpm to 5000 rpm	2 % reading 2 rpm	Shimpo DT 207Lp S/N D1690029R	9/18/2024	9/18/2025

Abbreviation List

A = Area (ft ²)	S.F. = Service Factor
AHU = Air Handling Unit	SF = Supply Fan
A _k = Effective Area	SP = Static Pressure
BHP = Brake Horsepower (IP) HP	SR = Supply Register
Btu = British Thermal Unit	T = Temperature
Btu/h = Btuh = BTUH = BTU/Hour	T _{ma} = Mixed Air Temperature
CL = Center Distance (used in belt formula)	T _{oa} = Outside Air Temperature
CD = Ceiling Diffuser	T _{ra} = Return Air Temperature
CF = Correction Factor	H = Head (in wc, ft wc, psi)
CFM = Volumetric Flow: Cubic Feet Per Minute	h = Enthalpy
CO ₂ = Carbon Dioxide	HP = Horsepower
CO = Carbon Monoxide	hr = Hour
C _v = Flow Constant	K _v = Flow constant (SI)
d = Diameter (in.) IP	kW = Kilowatt = 1000 Watts
Δ = Difference or Change (Final - Initial)	LAT = Leaving Air Temperature
DB = Dry Bulb	lb = Pounds
EA = Exhaust Air	LWT = Leaving Water Temperature
EAT = Entering Air Temperature	ma = Mixed Air
EF = Exhaust Fan	MIN = Minimum
Eff = Efficiency	MAX = Maximum
EG = Exhaust Grille	N/A = Not Applicable
ESP = External Static Pressure	NA = No Access
EWT = Entering Water Temperature	NL = Not Listed
°F = Degrees Fahrenheit, °F	NPSHA = Net Positive Suction Head Available
FPB = Fan Powered Box	NS = Not Specified
FLA = Full Load Amps	OA = Outside Air
fpm = Feet per Minute (fpm)	OAT = Outside Air Temperature
ft = Foot	PD = Sheave Pitch Diameter
gal = Gallons	P.D. = Pressure Drop
GPM = Gallons Per Minute (GPM)	PF = Power Factor
h = Enthalpy (BTU/lb dry air)	SG = Supply Grille
P = Pressure	SR = Supply Register
ppm = parts per million	TP = Total Pressure
psi = Pounds Per Square Inch	T _{ra} = Return Air Temperature
psid = PSI Differential	TS = Tip Speed (fpm) IP, (m/s) SI
r = Radius (in)	TSP = Total Static Pressure
% _{ra} = % of Return Air	V = Velocity
RA = Return Air	VAV = Variable Air Volume
RAT = Return Air Temperature	VD = Volume Damper
RF = Return Fan	VFD = Variable Frequency Drive
RG = Return Grille	W = Watt
RH = Relative Humidity	WB = Wet Bulb
RPM = Revolutions Per Minute	wg = wc = water gauge = water column
RTU = Roof Top Unit	WHP = Water Horsepower (IP)
SA = Supply Air	ω = Humidity Ratio



Jarmel Kizel
ARCHITECTS AND ENGINEERS INC.
42 OKNER PARKWAY
LIVINGSTON, NEW JERSEY 07039
TEL: 973-994-9669
FAX: 973-994-4069
www.jarmelkizel.com
Architecture
Engineering
Interior Design
Implementation Services
NJ State Board Of Architects Authorization No. 161
NJ State Board Of Engineers & Land Surveyors Authorization No. GA-278177

ISSUE

NO.	DATE	DESCRIPTION	INT.
1	12-03-21	SCHEMATIC DESIGN SUBMISSION	IHK
2	01-27-22	DESIGN DEVELOPMENT SUBMISSION	IHK
3	04-01-22	FINAL DESIGN SUBMISSION	IHK
4	6-20-22	DCA SUBMISSION	IHK

REVISION

NO.	DATE	DESCRIPTION	INT.
1	04-01-22	REVISED AS NOTED	IHK

PRINCIPALS

MATTHEW B. JARMEL, AIA, MBA
RICHARD A. JARMEL, PE
IRWIN H. KIZEL, AIA, PP
ARCHITECTS & ENGINEERS
RONALD A. BROKENSHIRE, PE
JEROME LESLIE EBEN, FAIA, PP
GERARD P. GESSARD, PE
FREDERICK KINGAID, AIA
DAVID L. LESSENE, RA
KAROLINA PROKOROVICZ, AIA
ROBERT B. RICHARDSON, AIA
CHERYL SCHWEIKER, AIA

Project:
ROOF REPLACEMENT AND HVAC REHABILITATION FOR CONNECTOR BLDG. NJ DEPARTMENT OF TRANSPORTATION HEADQUARTERS COMPLEX
T0647-00
1035 PARKWAY AVE
EWING, NJ 08618

Project Number: DPMC21-236
Scale: AS NOTED
Drawn By: LN
Approved By: RAJ

Drawing Name:
HVAC NEW PLAN

Drawing Number:
M-300

Initial Date: 10-1-21

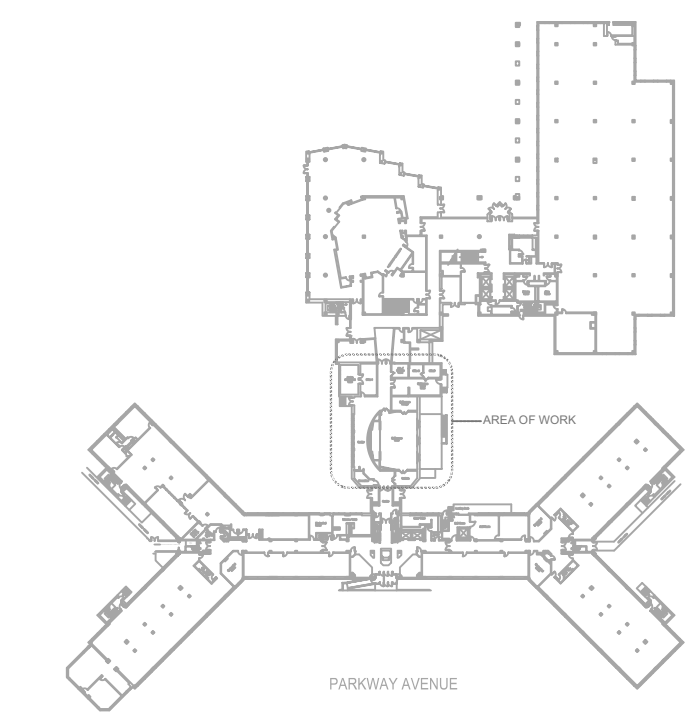
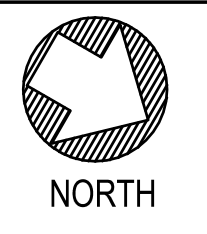
ENGINEER OF RECORD

RICHARD A. JARMEL, PE
N.J. LIC. 37491



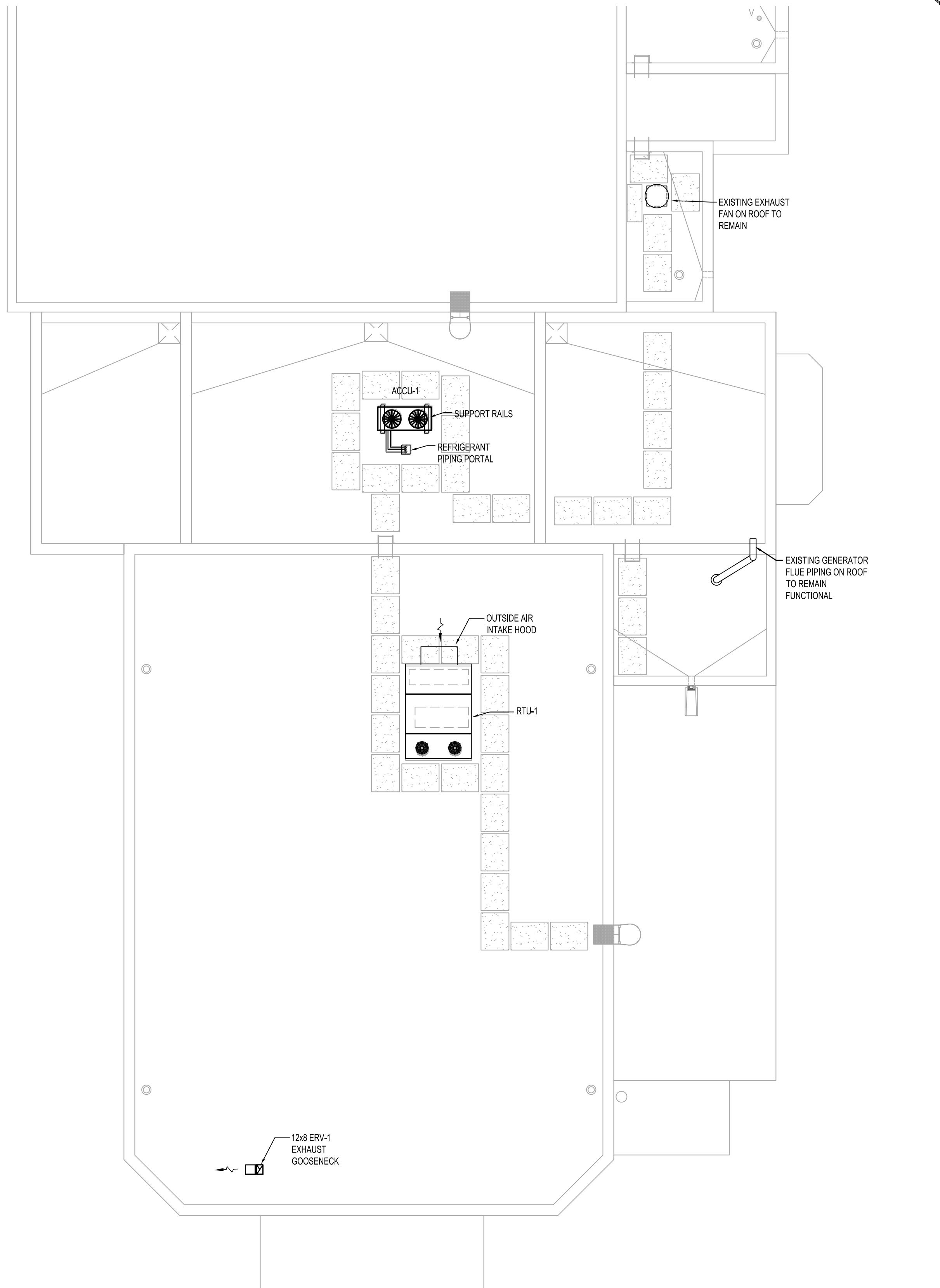
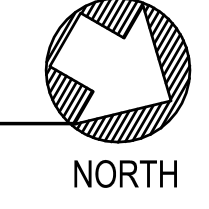
2 CONNECTOR HVAC NEW FLOOR PLAN

SCALE: 1/8" = 1'-0"



3 KEY PLAN

SCALE: NTS



1 CONNECTOR HVAC NEW ROOF PLAN

SCALE: 1/8" = 1'-0"

