

SECTION 15732 - PACKAGED ROOFTOP AIR-CONDITIONING UNITS

PART 1 - GENERAL

- 1.1 SECTION REQUIREMENTS
- A. SUBMITTALS: PRODUCT DATA AND SHOP DRAWINGS.
 - B. COMPLY WITH ASHRAE 15.
 - C. EER: EQUAL TO OR GREATER THAN PRESCRIBED BY THE ENERGY CODE ADOPTED BY THE AUTHORITY HAVING JURISDICTION.
 - D. WARRANTIES: SUBMIT A WRITTEN WARRANTY, SIGNED BY THE MANUFACTURER, AGREEING TO THE REPAIR OR REPLACEMENT OF COMPONENTS THAT FAIL WITHIN 5 YEARS OF SUBSTANTIAL COMPLETION.

PART 2 - PRODUCTS

- 2.1 PACKAGED UNITS, 5 TO 20 TONS
- A. FACTORY ASSEMBLED AND TESTED, CONSISTING OF COMPRESSORS, CONDENSERS, EVAPORATOR COILS, CONDENSER AND EVAPORATOR FANS, REFRIGERATION AND TEMPERATURE CONTROLS, FILTERS, AND DAMPERS.
 - 1. REFER TO ROOFTOP HEATING/COOLING UNIT SCHEDULE ON DRAWING M600 FOR CAPACITIES, AND MANUFACTURERS.
 - 2. EVAPORATOR FANS: BELT OR DIRECT DRIVEN, FORWARD CURVED CENTRIFUGAL.
 - 3. EXHAUST/RELIEF FANS: DIRECT DRIVE, FORWARD CURVED CENTRIFUGAL OR PROPELLER.
 - 4. CONDENSER FANS: DIRECT DRIVE PROPELLER.
 - 5. REFRIGERANT COILS: ALUMINUM FINS AND COPPER COIL.
 - 6. COMPRESSORS: SERVICEABLE HERMETIC OR FULLY HERMETIC, WITH SAFETY CONTROLS, HOT GAS BYPASS, AND TIMED OFF CONTROLS.
 - 7. HEAT EXCHANGERS: GAS FIRED, WITH GAS CONTROLS, ELECTRONIC IGNITION, HIGH LIMIT CUTOUT, AND FORCED DRAFT PROVING SWITCH.
 - 8. ECONOMIZER CONTROLS (COMPARATIVE ENTHALPY, 100% CAPACITY).
 - 9. SMOKE DETECTORS: PHOTOELECTRIC IN SUPPLY AND/OR RETURN AS CALLED FOR IN SCHEDULE ON SHEET M600.
 - 10. OPERATING CONTROLS: TWO STAGE HEATING AND TWO STAGE COOLING ON UNITS 7-1/2 TONS AND OVER.
 - 11. ROOF CURB.
 - 12. CONTROL WIRING FROM T-STAT TO ROOFTOP UNIT: SHALL BE 18GA / 7 CONDUCTOR, RATED FOR PLENUM APPLICATIONS.
 - 13. CONTROL WIRING FROM T-STAT TO REMOTE SENSOR: SHALL BE A SEPARATE 18GA / 2 CONDUCTOR SHIELDED, RATED FOR PLENUM APPLICATIONS.

PART 3 - EXECUTION

- 3.1 INSTALLATION
- A. INSTALL UNITS LEVEL AND PLUMB AND FIRMLY ANCHORED.
 - B. CONNECT GAS PIPING TO BURNER WITH PIPE SAME SIZE AS GAS TRAIN INLET, AND PROVIDE UNION WITH SUFFICIENT CLEARANCE FOR BURNER REMOVAL AND SERVICE.
 - C. INSTALL DUCTS TO TERMINATION IN ROOF MOUNTING FRAMES. TERMINATE DUCTS THROUGH ROOF STRUCTURE.
 - D. CONNECT UNITS TO WIRING SYSTEMS AND TO GROUND.

END OF SECTION 15732

SECTION 15810 - DUCTS AND ACCESSORIES

PART 1 - GENERAL

- 1.1 SECTION REQUIREMENTS
- A. SUBMITTALS: PRODUCT DATA FOR FIRE AND SMOKE DAMPERS.
 - B. COMPLY WITH NFPA 90A FOR SYSTEMS SERVING SPACES MORE THAN 25,000 CU. FT. IN VOLUME OR BUILDING TYPES II, IV, AND V CONSTRUCTION MORE THAN 3 STORIES IN HEIGHT.
 - C. COMPLY WITH NFPA 90B FOR SYSTEMS SERVING SPACES IN 1 OR 2 FAMILY DWELLINGS OR SERVING SPACES LESS THAN 25,000 CU. FT..
 - D. COMPLY WITH NFPA 96, "VENTILATION CONTROL AND FIRE PROTECTION OF COMMERCIAL COOKING OPERATIONS," FOR KITCHEN HOOD DUCTS.
 - E. COMPLY WITH UL 181 AND UL 181A FOR DUCTS AND CLOSURES.
 - F. TESTING, ADJUSTING, AND BALANCING AGENCY QUALIFICATIONS: AABC CERTIFIED (TO BE FURNISHED BY OWNER).

PART 2 - PRODUCTS

- 2.1 DUCTS
- A. SPIRAL DUCT: SPIRAL LOCK SEAM, WITHOUT INSULATION, G90 GALVANIZED FINISH, ASTM A-653/924
 - 1. BASIS OF DESIGN MANUFACTURERS: LINDAB SPIROSAFE, ALTERNATES TO THE BASIS OF DESIGN MUST BE SUBMITTED FOR REVIEW.
 - 2. FITTINGS: FACTORY PRODUCED STANDING SEAM CONSTRUCTION WITH INTERNAL SEALING. FITTINGS WITH A MAJOR AXIS OF 36" OR SMALLER SHALL BE 20 GAUGE. FITTINGS WITH A MAJOR AXIS OF 37"-48" SHALL BE 18 GAUGE.
 - B. GALVANIZED STEEL SHEET: FORMING STEEL, ASTM A 653/653M, G90 COATING DESIGNATION.
 - C. DUCT LINER: ASTM C 1071, TYPE II, WITH AN AIRSTREAM SURFACE COATED WITH A TEMPERATURE RESISTANT COATING. THICKNESS: 1-1/2 INCH. R-VALUE : 8.
 - 1. ADHESIVE: ASTM C 916, TYPE I.
 - 2. MECHANICAL FASTENERS: GALVANIZED STEEL PIN, LENGTH AS REQUIRED TO PENETRATE LINER PLUS A 1/8 INCH PROJECTION MAXIMUM INTO THE AIRSTREAM.
 - D. JOINT AND SEAM TAPE: COMPLY WITH UL 181A.
 - E. JOINT AND SEAM SEALANT: COMPLY WITH UL 181A.
 - F. RECTANGULAR METAL DUCT FABRICATION: COMPLY WITH SMACNA'S "HVAC DUCT CONSTRUCTION STANDARD" FOR METAL THICKNESS, REINFORCING TYPES AND INTERVALS, TIE ROD APPLICATIONS, AND JOINT TYPES AND INTERVALS.
- 2.2 ACCESSORIES
- A. VOLUME-CONTROL DAMPERS: FACTORY FABRICATED VOLUME CONTROL DAMPERS, COMPLETE WITH REQUIRED HARDWARE AND ACCESSORIES. SINGLE BLADE AND MULTIPLE OPPOSED BLADE, STANDARD LEAKAGE RATING, AND SUITABLE FOR HORIZONTAL OR VERTICAL APPLICATIONS.
 - B. FIRE DAMPERS: FACTORY-FABRICATED FIRE DAMPERS, COMPLETE WITH REQUIRED HARDWARE AND ACCESSORIES. UL LABELED ACCORDING TO UL 555, "FIRE DAMPERS".
 - C. FLEXIBLE CONNECTORS: FLAME RETARDANT OR NONCOMBUSTIBLE FABRICS, COATINGS, AND ADHESIVES COMPLYING WITH UL 181, CLASS 1.
 - D. FLEXIBLE DUCTS: FACTORY FABRICATED, INSULATED, ROUND DUCT, WITH AN OUTER JACKET ENCLOSING 2 INCH THICK, GLASS FIBER INSULATION, R-VALUE: 6.0, AROUND A CONTINUOUS INNER LINER.

PART 3 - EXECUTION

- 3.1 INSTALLATION
- A. DUCT SYSTEM PRESSURE CLASS: CONSTRUCT AND INSTALL EACH DUCT SYSTEM WITH 2 INCH POSITIVE AND NEGATIVE DUCT PRESSURE CLASSIFICATIONS.
 - B. CONCEAL DUCTS FROM VIEW IN FINISHED AND OCCUPIED SPACES. EXCEPT WHERE NOTED AS EXPOSED.
 - C. AVOID PASSING THROUGH ELECTRICAL EQUIPMENT SPACES AND ENCLOSURES.
 - D. SUPPORT AND CONNECT METAL DUCTS ACCORDING TO SMACNA'S "HVAC DUCT CONSTRUCTION STANDARD".
 - E. INSTALL DUCT ACCESSORIES ACCORDING TO APPLICABLE PORTIONS OF DETAILS OF CONSTRUCTION AS SHOWN IN SMACNA STANDARDS.
 - F. INSTALL LINER AND/OR INSULATION ON DUCTWORK PER THE MATERIAL SCHEDULE ON SHEET M010.
 - G. INSTALL VOLUME CONTROL DAMPERS IN LINED DUCT WITH METHODS TO AVOID DAMAGE TO LINER AND TO AVOID EROSION OF DUCT LINER.
 - H. INSTALL FIRE AND SMOKE DAMPERS ACCORDING TO MANUFACTURER'S UL APPROVED WRITTEN INSTRUCTIONS.
 - I. INSTALL FUSIBLE LINKS IN FIRE DAMPERS.
 - J. PROVIDE SADDLE TAPS AT TEES FOR EXPOSED DUCTWORK.
- 3.2 TESTING, ADJUSTING, AND BALANCING
- A. THE OWNER WILL SUPPLY AN INDEPENDENT BALANCE AGENT TO TO BALANCE AND ADJUST THE HVAC INSTALLATION. THE BALANCE AGENT WILL BE RESPONSIBLE FOR ANY PULLEY OR BELT CHANGES REQUIRED.
 - B. THE GC IS TO HAVE TRAINED STAFFED AVAILABLE DURING THE BALANCING TO CORRECT ISSUES NOTED BY THE BALANCE AGENT.
 - C. THE BALANCE AGENT IS TO BALANCE AIRFLOW WITHIN DISTRIBUTION SYSTEMS, INCLUDING SUBMAINS, BRANCHES, AND TERMINALS TO INDICATED QUANTITIES +/- 10%. THE HOOD EXHAUST SYSTEM SHALL BE BALANCED TO A TOLERANCE OF: -0+10% AND THE MAKE-UP AIR SYSTEM TO A TOLERANCE OF -10+0%.
 - D. THE BALANCE AGENT IS TO SUPPLY A COPY OF THE BALANCE REPORT TO THE OWNER, ENGINEER AND GENERAL CONTRACTOR FOR REVIEW.

END OF SECTION 15810

SECTION 15855 - DIFFUSERS, REGISTERS, AND GRILLES

PART 1 - GENERAL

- 1.1 SECTION REQUIREMENTS
- A. SUBMITTALS: NONE.

PART 2 - PRODUCTS

- 2.1 OUTLETS AND INLETS
- A. DIFFUSERS:
 - 1. REFER TO GRILLS, REGISTERS, AND DIFFUSERS SCHEDULE FOR EQUIPMENT SCHEDULE
 - 2. MANUFACTURER: AS SCHEDULED (NO SUBSTITUTIONS)
 - 3. MATERIAL: AS SCHEDULED.
 - 4. FINISH: AS SCHEDULED.
 - 5. MOUNTING: AS SCHEDULED.
 - B. WALL AND CEILING REGISTERS:
 - 1. REFER TO GRILLS, REGISTERS, AND DIFFUSERS SCHEDULE FOR EQUIPMENT SCHEDULE
 - 2. MANUFACTURER: AS SCHEDULED (NO SUBSTITUTIONS)
 - 3. MATERIAL: AS SCHEDULED.
 - 4. FINISH: AS SCHEDULED.
 - 5. MOUNTING: COUNTERSUNK SCREW.
 - C. WALL AND CEILING GRILLES:
 - 1. REFER TO GRILLS, REGISTERS, AND DIFFUSERS SCHEDULE FOR EQUIPMENT SCHEDULE
 - 2. MANUFACTURER: AS SCHEDULED (NO SUBSTITUTIONS)
 - 3. MATERIAL: AS SCHEDULED.
 - 4. FINISH: AS SCHEDULED.
 - 5. MOUNTING: COUNTERSUNK SCREW OR LAY IN DEPENDING LOCATION.

PART 3 - EXECUTION

- 3.1 INSTALLATION
- A. COORDINATE LOCATION AND INSTALLATION WITH DUCT INSTALLATION AND INSTALLATION OF OTHER CEILING AND WALL MOUNTED ITEMS.
 - B. LOCATE CEILING DIFFUSERS, REGISTERS, AND GRILLES, AS INDICATED ON THE ARCHITECTURAL "REFLECTED CEILING PLANS." UNLESS OTHERWISE INDICATED, LOCATE UNITS IN CENTER OF ACOUSTICAL CEILING PANELS.

END OF SECTION 15855

HVAC MATERIAL SCHEDULE		
CATEGORY	APPLICATION	ALLOWABLE MATERIAL
DUCT	EXPOSED SUPPLY	RECT. LINED OR ROUND AS SHOWN, NO EXPOSED DUCT-SEALING MASTIC
	EXPOSED RETURN	RECTANGULAR, NO EXPOSED DUCT-SEALING MASTIC
	EXPOSED GENERAL EXHAUST	RECTANGULAR, NO EXPOSED DUCT-SEALING MASTIC
	CONCEALED, SUPPLY	RECT. OR ROUND AS SHOWN, LINED OR INSULATED
	CONCEALED RETURN	RECT. OR ROUND AS SHOWN, LINED OR INSULATED
	CONCEALED GENERAL EXHAUST	RECT. OR ROUND AS SHOWN, LINED OR INSULATED
	CONCEALED, TYPE I HOOD EXHAUST.	RECT. 16 GA. BLACK IRON W/WRAP OR UL 1978 FACTORY-MANUFACTURED DUCT W/ WRAP. (SUBMIT SHOP DRAWINGS FOR FACTORY-MANUFACTURED DUCT PRIOR TO ORDERING FOR APPROVAL.)

HVAC ABBREVIATIONS

- AFF ABOVE FINISHED FLOOR
- CD CONDENSATE
- CLU CONDENSING UNIT
- EF EXHAUST FAN
- EXT'G EXISTING
- HD HOOD
- MUA MAKEUP AIR UNIT
- OPD OPPOSED BLADE DAMPER
- RG RETURN GRILLE
- RTU ROOFTOP UNIT
- SR SUPPLY REGISTER
- VSC VARIABLE SPEED CONTROL
- COZAS TENANT'S CO2 ALARM SUPPLIER
- GC GENERAL CONTRACTOR
- HES TENANT'S HVAC EQUIPMENT SUPPLIER
- TAB TENANT'S TEST AND BALANCE VENDOR
- TCC TENANT'S CABLING CONTRACTOR
- KES TENANT'S KITCHEN EQUIPMENT SUPPLIER
- HS TENANT'S HOOD SUPPLIER
- TDC TENANT DUCT CLEANER
- TEMS TENANT'S ENERGY MANAGEMENT SYSTEM SUPPLIER TENANT'S LIGHT/LAMP SUPPLIER
- TMB TENANT'S MENU BOARD SUPPLIER
- TMS TENANT'S MILLWORK SUPPLIER
- TP TENANT'S PHONE SUPPLIER
- TRS TENANT'S RAILING SUPPLIER
- TSV TENANT'S SIGN VENDOR
- TUV TENANT'S UV SANITIZER SUPPLIER
- WCS TENANT'S WALK-IN COOLER SUPPLIER
- WHS TENANT'S WATER HEATER SUPPLIER

HVAC SYMBOLS

- CEILING SUPPLY DIFFUSER
- CEILING RETURN DIFFUSER
- SUPPLY REGISTER
- RETURN REGISTER
- FLEXIBLE DUCT
- MITERED CORNER WITH TURNING VANES
- DUCTWORK INTERNAL FREE DIMENSIONS
- RECTANGULAR TO ROUND TRANSITION
- GREASE DUCT CLEANOUT
- MITERED CORNER WITHOUT TURNING VANES
- GRIDPOINT THERMOSTAT
- GRIDPOINT ZONE SENSOR MODULE
- PLAN NOTE: SEE PLAN NOTES LISTED ON THE SAME SHEET FOR NOTE MEANING
- EQUIPMENT TAG: SEE EQUIPMENT SCHEDULE ON SHEET M600 FOR EQUIPMENT INFORMATION.
- GRILL, REGISTER, OF DIFFUSER TAG:
- TAG
- NECK SIZE
- AIRFLOW (CFM)

HVAC GENERAL NOTES

- A. GENERAL NOTES APPLY TO HVAC SHEETS.
- B. WORK SHALL COMPLY WITH STATE AND LOCAL CODE REQUIREMENTS AS APPROVED AND AMENDED BY THE AUTHORITY HAVING JURISDICTION, INCLUDING APPLICABLE SECTIONS OF NFPA, THE MECHANICAL CODE, AND ANY INTERIM AMENDMENTS AT THE TIME OF THE PROPOSAL. PURCHASE PERMITS ASSOCIATED WITH THE WORK. OBTAIN INSPECTIONS REQUIRED BY CODE. SEE SHEET G000 FOR THE PREVAILING CODES.
- C. CONTRACTOR AND SUBCONTRACTORS SHALL REVIEW A COMPLETE SET OF THE CONSTRUCTION DOCUMENTS.
- D. COORDINATE WORK WITH THE WORK OF OTHER TRADES, EQUIPMENT FURNISHED BY OTHERS, REQUIREMENTS OF THE OWNER, AND OF THE EXISTING CONDITIONS AT THE PROJECT SITE.
- E. DRAWINGS FOR THE MECHANICAL WORK ARE DIAGRAMMATIC, SHOWING THE GENERAL LOCATION, TYPE, LAYOUT, AND EQUIPMENT REQUIRED. THE DRAWING SHALL NOT BE SCALED FOR EXACT MEASUREMENTS, REFER TO ARCHITECTURAL DRAWINGS FOR DIMENSIONS. REFER TO MANUFACTURER'S STANDARD INSTALLATION DRAWINGS FOR EQUIPMENT CONNECTIONS AND INSTALLATION REQUIREMENTS. PROVIDE DUCTWORK, CONNECTIONS, OFFSETS, ACCESSORIES, AND MATERIALS NECESSARY FOR A COMPLETE SYSTEM.
- F. DUCT DIMENSIONS ON PLANS INDICATE DIMENSIONS OF INTERNAL FREE AREA.
- G. PERFORATED CEILING DIFFUSERS SHALL BE 4-WAY UNLESS NOTED OTHERWISE.
- H. COORDINATE ROOF WORK WITH THE OWNER'S CONSTRUCTION MANAGER PRIOR TO CONSTRUCTION.
- I. UNLESS NOTED OTHERWISE RECTANGULAR DUCT ELBOWS GREATER THAN 45° SHALL BE MITERED ELBOWS WITH DOUBLE-THICKNESS TURNING VANES AND RECTANGULAR DUCT ELBOWS 45° OR LESS SHALL BE RADIUSSED ELBOWS WITH AN INSIDE RADIUS OF AT LEAST 1/2 THE WIDTH OF THE DUCT.
- J. REPLACE AIR FILTERS WITH NEW, CLEAN MERV 8 AIR FILTERS AT TURNOVER.
- K. THE TERM "FURNISH" MEANS SUPPLY AND DELIVER TO THE PROJECT SITE, READY FOR UNLOADING, UNPACKING, ASSEMBLY, INSTALLATION, AND SIMILAR OPERATIONS. THE TERM "INSTALL" DESCRIBES THE OPERATIONS AT THE PROJECT SITE INCLUDING THE ACTUAL UNLOADING, UNPACKING, ASSEMBLY, ERECTING, PLACING, ANCHORING, APPLYING, WORKING TO DIMENSION, FINISHING, CURING, PROTECTING, CLEANING, AND SIMILAR OPERATIONS. THE TERM "PROVIDE" MEANS TO FURNISH AND INSTALL, COMPLETE AND READY FOR THE INTENDED USE.
- L. INSTALL LABELING CALLED FOR IN THE MECHANICAL DRAWINGS USING ENGRAVED PHENOLIC PLATES (WHITE WITH BLACK LETTERING) FURNISHED BY TSV.
- M. PROVIDE P3000 12 GA. UNISTRUT WITH PG FINISH FOR DUCT SUPPORTS AND OTHER UNISTRUT IN AREAS EXPOSED TO VIEW. SLOTTED UNISTRUT AND OTHER UNISTRUT WITH HOLES IS NOT ACCEPTABLE.

ARCHITECT OF RECORD



513 MAIN STREET, SUITE 300
FORT WORTH, TEXAS 76102
(817) 820-0433

SEAL



PERMIT SET - 06/04/2025

COPYRIGHT 2019
THIS DRAWING IS AN INSTRUMENT OF SERVICE AND AS SUCH REMAINS THE PROPERTY OF CHIPOTLE MEXICAN GRILL, INC.. PERMISSION FOR USE OF THIS DOCUMENT IS LIMITED AND CAN BE EXTENDED ONLY BY WRITTEN AGREEMENT WITH CHIPOTLE MEXICAN GRILL, INC..



CHIPOTLE MEXICAN GRILL, INC.
PO BOX 182566
COLUMBUS, OH 43218-2566
TELEPHONE: 614.318.2400
INTERNET: WWW.CHIPOTLE.COM

STORE NO.: 5852

ODESSA EAST
8009 TX-191
ODESSA, TX 79765

Issue Record:

06/04/25 PERMIT SET

Revisions:

Drawn: JW Checked: JW

Project No: 25-0068

Contents:

HVAC SPECIFICATIONS

M010



796 N. Main Street
St. Louis, MO 63105
CERTIFICATE OF AUTHORITY NO. F-20800

1-800-348-1800
F 636.348.1800

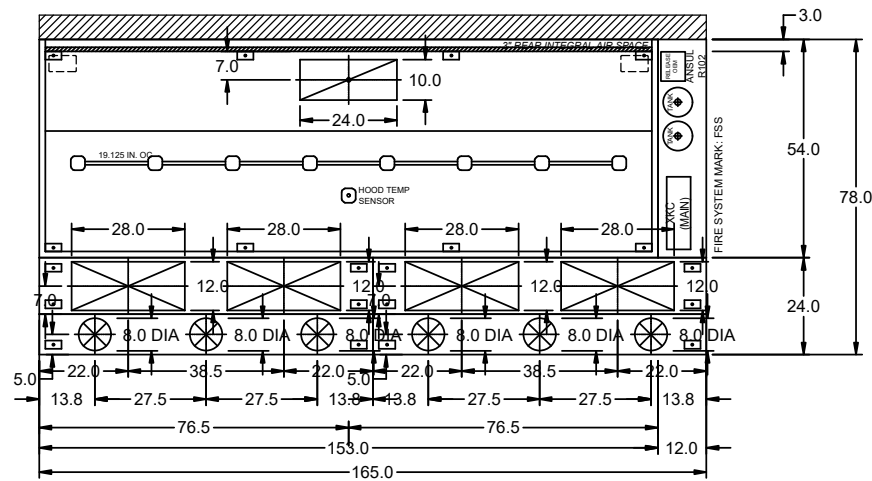
HOOD INFORMATION																	
HOOD NO.	MARK	MODEL	HOOD DIMENSIONS (IN.)			HOOD CONSTR.	COOKING LOAD / DUTY RATING	EXHAUST					SUPPLY		HANGING WEIGHT LBS.	SECTION LOCATION	
			LENGTH	WIDTH	HEIGHT			TOTAL CFM	COLLAR(S)			MUA CFM	AC CFM				
1	HOOD-1	XXEW-153-S	153	54	24	430 SS WHERE EXPOSED	HEAVY	2550	10	24		2550	0.483	1300	700	743	SINGLE

HOOD INFORMATION														
HOOD NO.	MARK	LIGHTING DETAILS				GREASE FILTRATION DETAILS				UTILITY CABINET(S)				
		FIXTURE TYPE	BULB / LAMP INFO	QTY	FOOT CANDLES	TYPE / MODEL MATERIAL	QTY	SIZE (IN.)	LOCATION	FIRE SYSTEM	SIZE	MODEL	CONTROLS	
1	HOOD-1	INCANDESCENT (GLOBE)	100W A19 (BULBS NOT INCL.)	8	54.77	X-TRACTOR (SPARK ARRESTOR INCL.) STAINLESS STEEL	2	16	20	RIGHT	ANSUL R102	6	XKC	MB TOUCHSCREEN

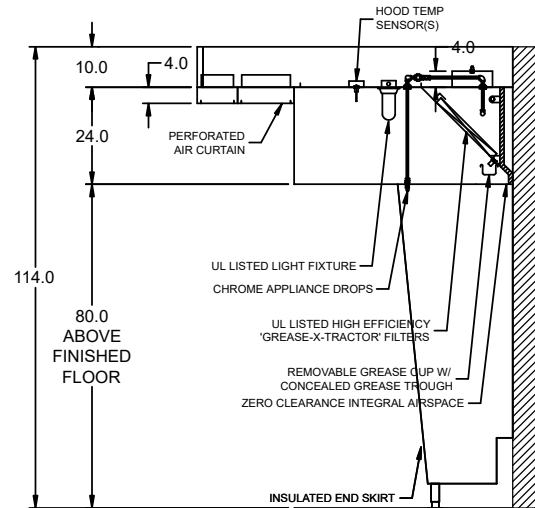
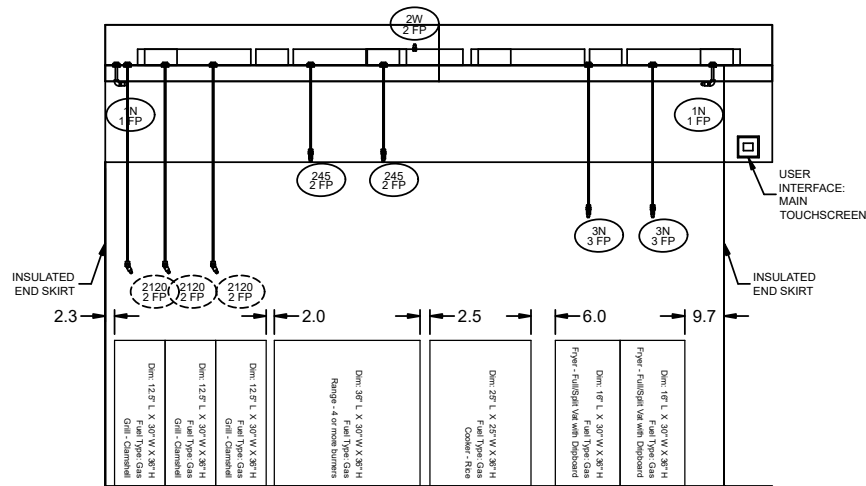
SUPPLY PLENUM INFORMATION																		
HOOD NO.	MARK	POS.	TYPE	SIZE (IN.)			INSULATED	DAMPER(S)	LED LIGHT(S)		TOTAL CFM	TOTAL S.P.	COLLARS					
				L	W	H			SUPPLIED	QTY			TYPE	MOUNTING	QTY	W	L	DIA.
1	HOOD-1	FRONT	SPLIT ASF	82.5	14	4	NO	NO		650	0	MUA	FACTORY	2	12	28	325	139
				82.5	10	4	YES	YES		350	0.02	AC	FACTORY	3			117	335
1	HOOD-1	FRONT	SPLIT ASF	82.5	14	4	NO	NO		650	0	MUA	FACTORY	2	12	28	325	139
				82.5	10	4	YES	YES		350	0.02	AC	FACTORY	3			117	335

HOOD OPTIONS

- UL 710 LISTED W/ OUT EXHAUST FIRE DAMPER - UL #R25625
- BACK INTEGRAL AIR SPACE - 3 IN WIDE - ZERO CLEARANCE
- 10 IN HIGH CEILING ENCLOSURES - FRONT LEFT RIGHT - FIELD INSTALLED
- FACTORY MOUNTED EXHAUST COLLAR(S)
- LEFT INSULD END PNL W/ ADJ LEG 80 IN HIGH 27.00 IN TOP WIDTH 21.0 IN BOTTOM WIDTH
- RIGHT INSULD END PNL W/ ADJ LEG 80 IN HIGH 27.00 IN TOP WIDTH 21.0 IN BOTTOM WIDTH
- PERFORMANCE ENHANCING LIP (PEL) TECHNOLOGY
- STANDING SEAM CONSTRUCTION FOR SUPERIOR STRENGTH



FIRE (PIPING/DROPS/NOZZLES/ETC.)
SUBJECT TO CHANGE. AS-BUILT
DRAWINGS CAN BE PROVIDED AT
TIME OF ORDER AND INCLUDED
WITH PRODUCT SHIPMENT



SHOP DRAWING REVIEW

- NO EXCEPTIONS TAKEN
- MAKE CORRECTIONS NOTED
- REVISE AND RESUBMIT
- REJECTED

REVIEW IS FOR GENERAL COMPLIANCE WITH CONTRACT DOCUMENTS AND SPECIFICATIONS. NO RESPONSIBILITY IS ASSUMED BY THIS ENGINEER. THE CONTRACTOR IS RESPONSIBLE FOR CORRECTNESS OF QUANTITIES, DIMENSIONS AND DETAILS

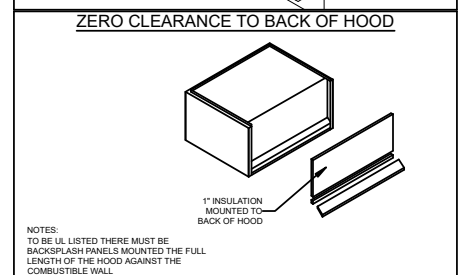
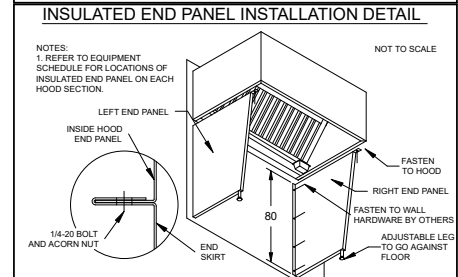
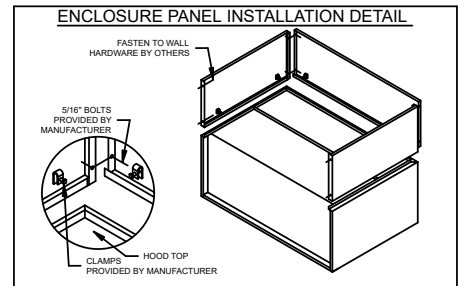
CASE
Engineering Inc.

796 Menas Court
St. Louis, MO 63026

T 636.349.1600
F 636.349.1730

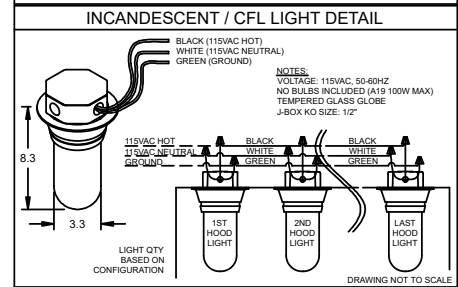
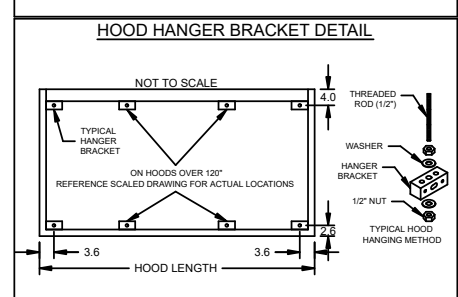
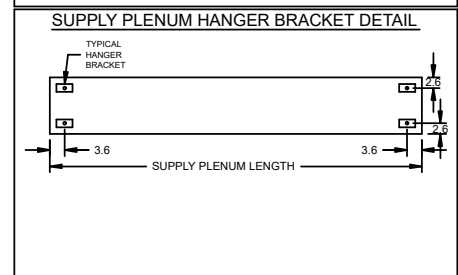
BY: JW

DATE: 10/14/2025



HOOD HANGING HEIGHT FOR FIRE SYSTEMS
VERIFICATION OF HOOD HANGING HEIGHT ABOVE FINISHED FLOOR (A.F.F.) IS REQUIRED FOR CORRECT PLACEMENT OF FIRE SYSTEM NOZZLES.

- RECOMMENDED HANGING HEIGHT = 80" FROM FINISHED FLOOR TO LOWER FRONT EDGE OF HOOD.
- OTHER HANGING HEIGHT = * FROM FINISHED FLOOR TO LOWER EDGE OF HOOD.

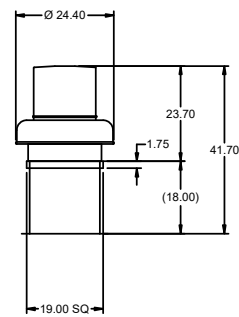
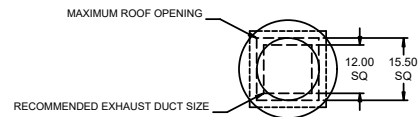


Direct Drive Centrifugal Roof Exhaust Fan

MARK INFORMATION		FAN INFORMATION									SOUND INFORMATION				MOTOR INFORMATION									
MARK	QTY	MODEL	DRIVE TYPE	VOLUME (CFM)	EXTERNAL SP (IN. WG)	TOTAL EXTERNAL SP (IN. WG)	FAN SPEED (RPM)	OUTLET VELOCITY (FT/MIN)	FEI	TOTAL WEIGHT (LB)	INLET dBA	INLET SONES	INLET SONES (SPHERICAL)	OUTLET dBA	OUTLET SONES	OPERATING POWER (HP)	MOTOR SIZE (HP)	FEP INPUT POWER (KW)	ENCLOSURE	VOLTAGE	CYCLE	PHASE	EC MOTOR	NEC FLA*
EF-2 (Restroom)	1	XRED-097-VG	Direct	150	0.6	0.6	1,330	156.25	0	43.2	51.87	6.22	0	0	0	0.05	0.25	0	TN	115	60	1	VariGreen	5.8

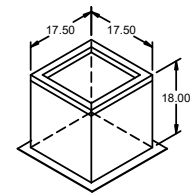
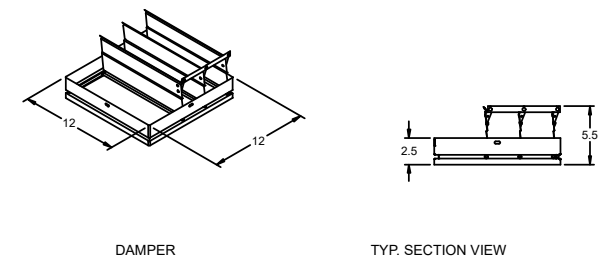
*NEC FLA - Based on table 430.250 or 430.248 of National Electrical Code 2020. Actual motor FLA may vary for sizing thermal overload, consult factory"

EF-2 (Restroom) : SELECTED OPTIONS AND ACCESSORIES
Curb Cap Size - 19 Square UL/cUL 705 Listed - "Power Ventilators" Switch, NEMA-1, Toggle, Damper Shipped Loose, BD-100-PB-12X12, Gravity Operated, Not Coated, Nominal Size Birdscreen: Galvanized, nom. 84% Free Area Conduit Chase Qty 1

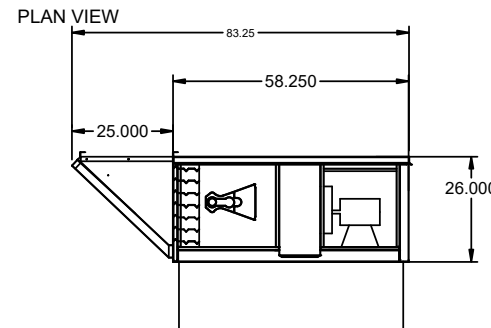
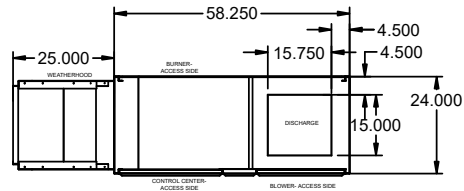


DUCT DIMENSIONS ARE LARGEST POSSIBLE DUCT TO FIT THROUGH CURB.
CONSULT SYSTEM DESIGN ENGINEER FOR RECOMMENDED DUCT SIZE.

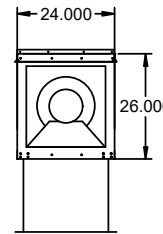
OVERALL HEIGHT MAY BE GREATER DEPENDING ON MOTOR, ADAPTER, AND/OR HINGE BASE.



EQUIPMENT SCHEDULE										OPTIONS AND ACCESSORIES	
Tempered Make-Up Air Unit										Make Up Air Air Flow Arrangement: Outdoor Air Only Weatherhood: Aluminum Mesh, 16x20x2 - (2) Damper: Inlet Outdoor Air Intake Position: End Discharge Position: Bottom Coating: Galvanized Insulation: Double Wall - Tempering On Supply Fan Control: Vari-Green ECM Vari-Green Control: Dial on Motor Access Side: Right-Hand Unit Weight: 421 lb Control Center Freeze Protection Heat Inlet Air Sensor Unit Controls: Microprocessor Temperature Control: Discharge BMS Protocol: None Direct Gas Options/Accessories Approvals: ETL FM Compliant	
Qty	Accurex Model	Volume	External SP	Total SP	MCA	MOP	Weight	SCCR	Mark: MAU-1		
1	XDGX-P115-H05-VG	1,300 CFM	0.5 in. wg	1,446 in. wg	11.7	20	421 lb	5kA			
Motor Information											
Size	VICP	Enclosure	Motor with Shaft Grounding	Motor RPM	Operating Power						
1 hp	20960/1	ODP	No	1725	0.68 hp						
Heating											
Type	Gas Type	Temperature			Energy	Connection Gas (IN)	Building Gas Pressure	Control Access	Gas Pressure		
Direct Gas	Natural	Winter DB	Max Δ	Max LAT	Input	Output	Efficiency	3/4"	1/2 PSI		7 in. wg
		10.0 F	60.0 F	70.0 F	91.6 MBH	84.2 MBH	92%				0.5 PSI



ELEVATION VIEW



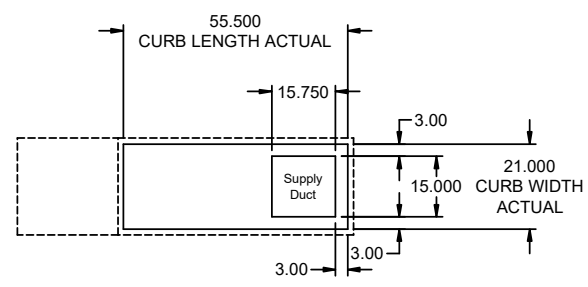
END VIEW

NOTE: Roof Opening Requirements:

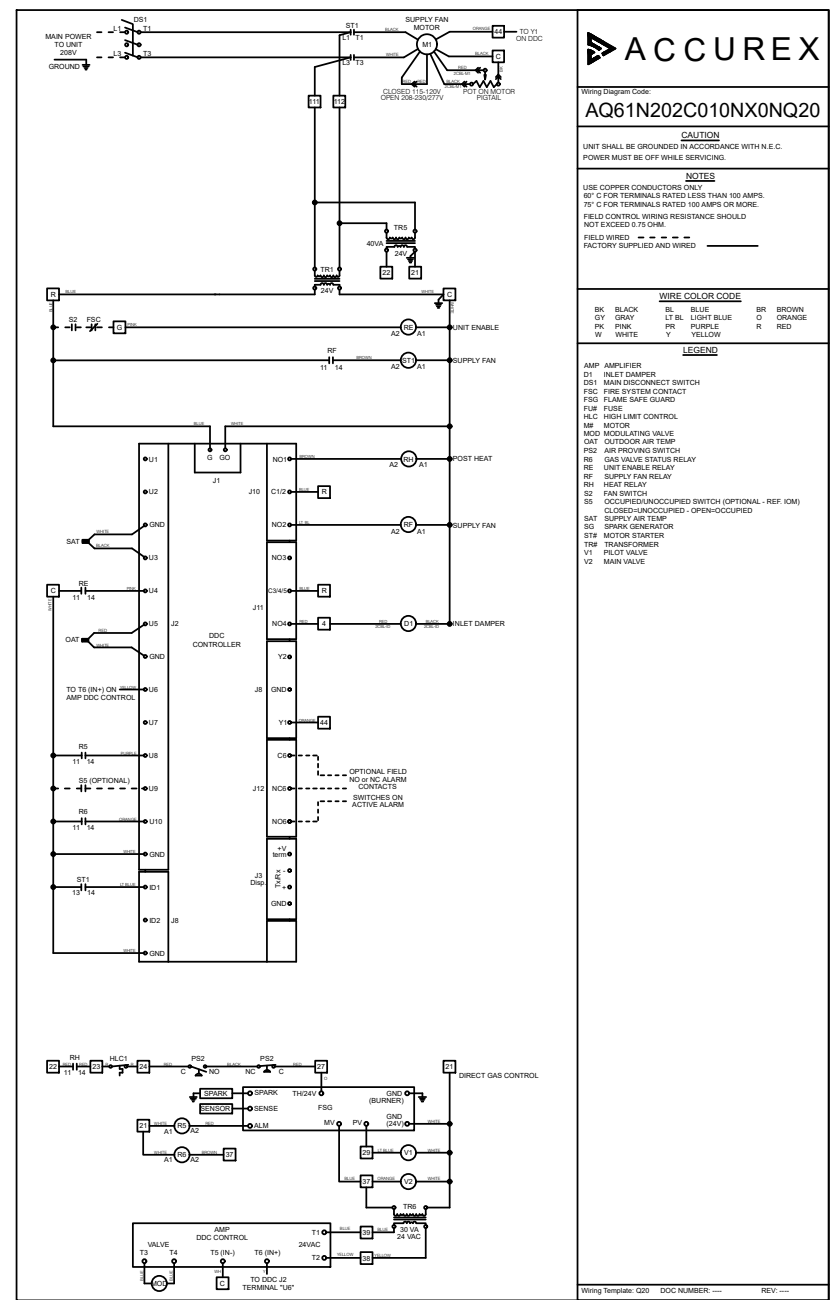
Minimum Roof Opening: The minimum roof opening size is the illustrated duct diameter plus 0.25 in. on all sides. For example: If the duct size is 14 x 14 in. square, the minimum roof opening size is 14.5 x 14.5 in. square.

Maximum Roof Opening: There must be a minimum perimeter of 1.75 in. between the roof opening and the roof curb. For example: If the roof curb is 75 x 30 in. square, the maximum roof opening is 71.5 x 26.5 in. inches square.

NOTE: The weatherhood and filter sections of the make-up air unit are not supported by the curb. This is by design, in order to help alleviate water infiltration issues. MUA Unit supports are shipped loose with unit.



FOOTPRINT



ACCUREX

PROJECT: 10/13/2025
 MARK: MAU-1

DIRECT CHAIN ACX
 JOE AYUB
 JOE.AYUB@ACCUREX.COM
 (857)272-8727

ACCUREX

CONTROL INFORMATION

MARK	MAIN ELECTRICAL CONTROL PACKAGE		MAIN USER INTERFACE		FANS CONTROLLED											
	MODEL	LOCATION	TYPE	LOCATION	FAN #	TYPE	FAN	FAN MARK	ZONE	CFM	MOTOR HP	MOTOR VOLT	CYCLE	MOTOR PHASE	MOTOR STARTER IN PANEL	VFD IN PANEL
HOOD CONTROLS	XKC-CV-SB-11-1-0	RIGHT CABINET ON HOOD-1	FULL COLOR TOUCHSCREEN	CABINET - RIGHT CABINET ON HOOD-1	1	SUPPLY	S1	MAU-1	1	1300	1	208	60	1	NO	NO
					2	EXHAUST	E1	EF-1 (HOOD-1)	1	2550	2	208	60	1	NO	NO

CONTROL FEATURES
 HOOD LIGHT CONTROL
 TEMP SENSORS (FACTORY INSTALLED) - QTY. 1
 DRY FIRE CONTACTS - QTY. 2
 LIGHTS OFF DURING FIRE
 EXHAUST MAX DURING FIRE
 SUPPLY OFF DURING FIRE
 BMS INTEGRATION - BACNET MSTP

SPECIAL DESIGN REQUESTS
 SDR #K2300291-1 - APPLIANCE CONTACTORS - 20A



DOC NUMBER: --- REV: ---

CAUTION
 UNIT MUST BE GROUNDED IN ACCORDANCE WITH N.E.C. POWER MUST BE OFF WHILE SERVICING.

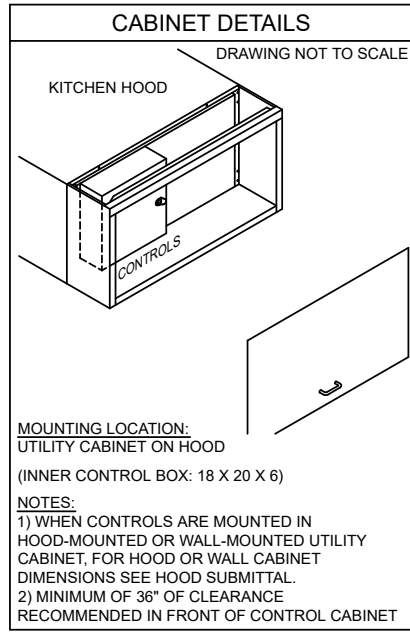
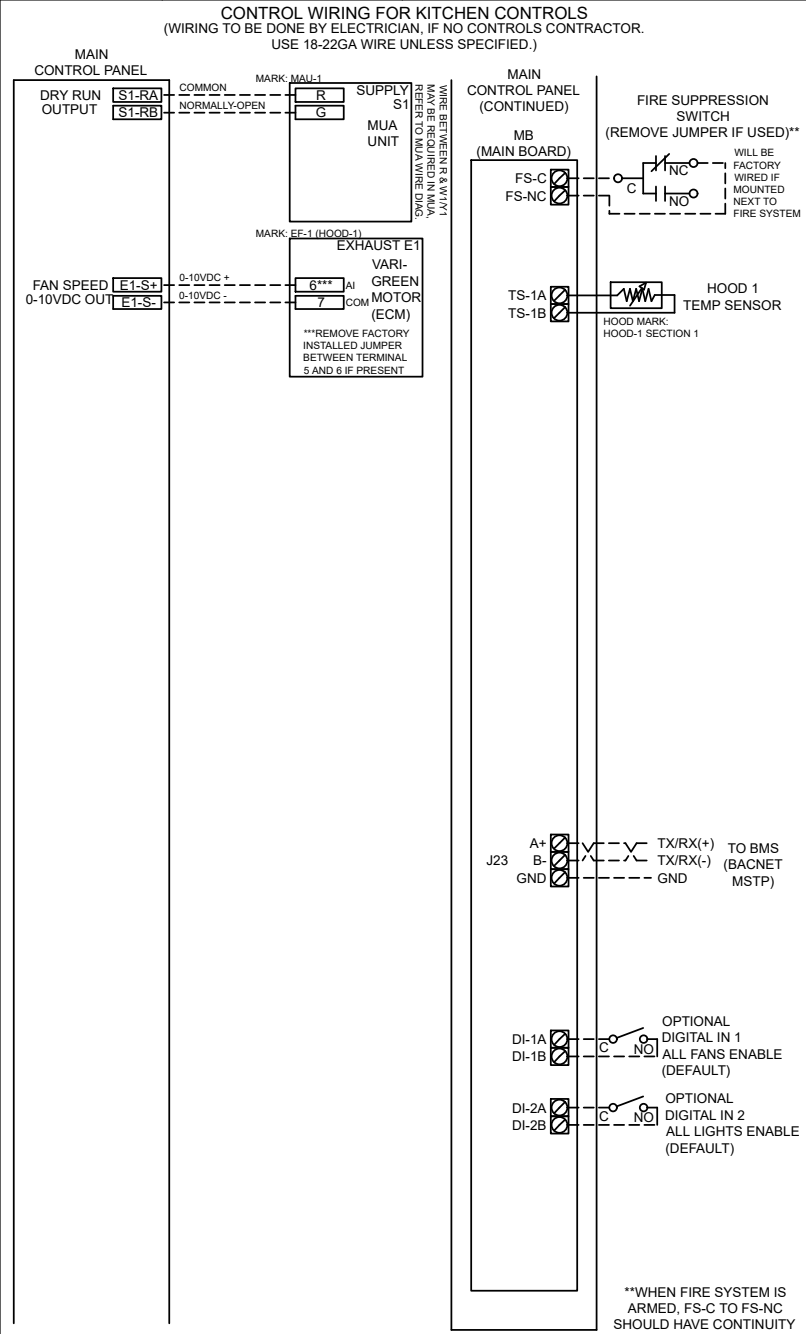
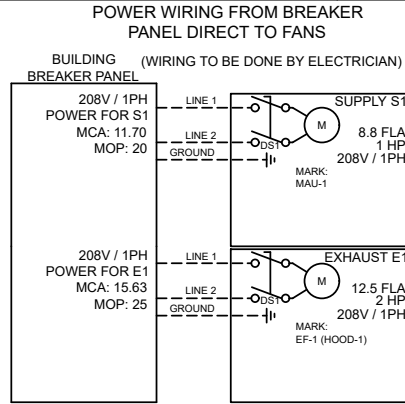
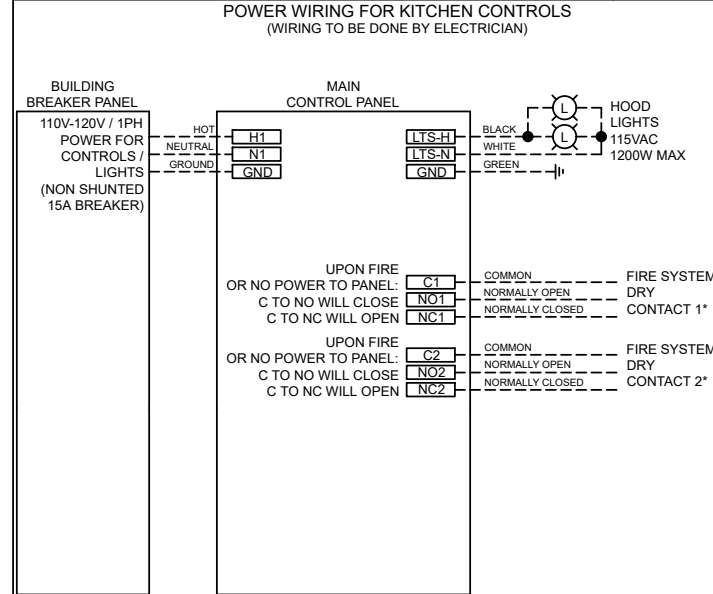
ATTENTION
 L'APPAREIL DOIT ÊTRE MIS À LA TERRE CONFORMÉMENT AU CODE C.E. L'ALIMENTATION DOIT ÊTRE COUPÉE DURANT L'ENTRETIEN.

COMMERCIAL APPLIANCE OUTLET CENTER
 ELECTRICAL RATINGS: 110-240V, 1PHASE, 50-60HZ, 15A
 BASE FILE #E200616, ML FILE #E313951

PRG VERSION: V5
 FIELD WIRING (CÂBLE LOCALÉMENT)
 FACTORY WIRING (CÂBLE À L'USINE)

NE PAS RETIRER CES DESSINS DE CET ÉQUIPEMENT SAUF INDICATION CONTRAIRE. UTILISER DES CONDUCTEURS EN CUIVRE CLASSÉS 90 °C. SERRER LES BORNES EN CUIVRE CLASSÉS 90 °C. SERRER LES BORNES À 8 LB-PO. SERRER LES COSSÉS/VIS D'ALIMENTATION AUX COUPLES INDICQUÉS POUR LE COMPOSANT. SERRER LES BORNES À VIS DE LA CARTE DE COMMANDE À 3.5 LB-PO. LA RÉSISTANCE DU CÂBLAGE DE COMMANDE LOCAL NE DOIT PAS DÉPASSER 0.75 OHM. POUR PLUS D'INFORMATION, CONSULTER LE MANUEL OU APPELER 1-800-371-8858.

WIRING DIAGRAM CODE: WDC#
 JOB NAME: CHIPOTLE-ODESSA EAST 5852
 MODEL: XKC-CV-SB-11-1-0
 SERIAL NUMBER: WDSN#
 MARK: HOOD CONTROLS



MAIN USER INTERFACE DETAILS

MOUNTING TYPE:
 FACTORY MOUNTED:
 UTILITY CABINET - RIGHT END OF HOOD

USER INTERFACE CONTROL:
 FANS AND LIGHTS

INTERFACE CABLE LENGTH:
 7FT (FACTORY PROVIDED)

MOUNTING LOCATION:
 UTILITY CABINET ON HOOD
 (INNER CONTROL BOX: 18 X 20 X 6)

NOTES:
 1) WHEN CONTROLS ARE MOUNTED IN HOOD-MOUNTED OR WALL-MOUNTED UTILITY CABINET, FOR HOOD OR WALL CABINET DIMENSIONS SEE HOOD SUBMITTAL.
 2) MINIMUM OF 36" OF CLEARANCE RECOMMENDED IN FRONT OF CONTROL CABINET

FACTORY SETTINGS
 TYPE: CV
 CONFIGURATION: STANDARD
 ZONES: 1
 HOODS: 1
 EXHAUST FANS: 1
 SUPPLY FANS: 1
 MB ROOM SENSOR: NO
 MB TEMP SENSORS: 1
 HIGH TEMP FAULT: NO
 FREEZE PROTECTION: YES
 MB GAS RESET: NO
 FAN PROVING: NO
 BMS: BACNET MSTP

EXHAUST FAN SETTINGS
 SEE FAN CONFIGURATION TABLE BELOW

SUPPLY FAN SETTINGS
 SEE FAN CONFIGURATION TABLE BELOW

SENSOR SETTINGS
 SEE HOOD CONFIGURATION TABLE BELOW

USER INTERFACE SETTINGS (MB)
 FAN & LIGHT BUTTONS: SHOW BOTH (SEPERATE)

GENERAL SETTINGS
 TIME ZONE: CENTRAL DAYLIGHT (DEFAULT)

MB FIRE/FAULT SETTINGS
 EXHAUST DURING FIRE: MAX
 SUPPLY DURING FIRE: OFF
 LIGHTS DURING FIRE: OFF

ZONE CONFIGURATION

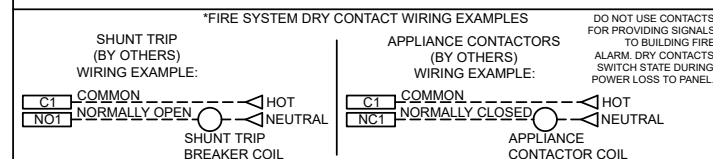
ZONE #	ZONE	ROOM TEMP
1	Z1	PRESET

HOOD CONFIGURATION

HOOD #	HOOD	HOOD MARK	ZONE	EXH A	EXH B	SUPPLY	MB TEMP SENSORS
1	H1	HOOD-1 SECTION 1	Z1	E1	-	S1	TS1

FAN CONFIGURATION

FAN #	TYPE	FAN	FAN MARK	ZONE	MIN CFM	MAX CFM	MODBUS VFD	VFD ADDRESS	MIN FREQ	MAX FREQ	MIN VDC	MAX VDC
1	SUPPLY	S1	MAU-1	Z1	-	1300	NO	-	-	-	-	10.0
2	EXHAUST	E1	EF-1 (HOOD-1)	Z1	-	2550	NO	-	-	-	-	7.7



SERVICE INFORMATION

MARK: CERTIFICATION	MODEL: CERTIFICATION
ITEM: SERVICE	QUANTITY: 1

ACCUREX AFTERMARKET CERTIFICATION PROGRAM CONFIRMS THE EQUIPMENT IS INSTALLED AND OPERATING ACCORDING TO THE MANUFACTURER'S REQUIREMENTS BY A FACTORY AUTHORIZED SERVICER (FAS). INSTALLATION AND START-UP OF EQUIPMENT PER THE MANUFACTURER'S INSTALLATION AND OPERATIONS MANUAL TO BE PERFORMED BY OTHERS PRIOR TO THIS SERVICE. A WRITTEN REPORT WILL BE PROVIDED AFTER THIS SERVICE IS COMPLETED.

ACCUREX WILL COMMUNICATE WITH THE SITE CONTACT PROVIDED BY THE CUSTOMER TO SCHEDULE AND PERFORM ALL SERVICES INCLUDED WITHIN THIS QUOTE. IF SUCH SERVICES CANNOT BE SCHEDULED AND CONDUCTED WITHIN 18 MONTHS FROM DATE OF EQUIPMENT SHIPMENT (THE "SERVICE PERIOD"), THE SERVICES WILL EXPIRE, ACCUREX WILL RETAIN THE SERVICE FEE WITHOUT A REFUND OR CREDIT DUE TO CUSTOMER, AND CUSTOMER WILL BE RESPONSIBLE FOR ARRANGING REPLACEMENT SERVICES WITH OTHER PROVIDERS AND/OR ACCUREX.

IF ACCUREX PROVIDES REPLACEMENT SERVICES AFTER THE SERVICE PERIOD HAS EXPIRED, CUSTOMER WILL BE RESPONSIBLE FOR PAYING ADDITIONAL SERVICES FEES FOR SUCH SERVICES.

TRIP QUANTITY: 1

ONE TRIP TO THE JOBSITE INCLUDED FOR THE CERTIFICATION WORK TO BE PERFORMED (TIME ONSITE TBD BASED ON EQUIPMENT SELECTED)

EQUIPMENT INCLUDED IN CERTIFICATION:

- HOOD CONTROLS
- MAU-1
- EF-2 (RESTROOM)
- HOOD-1
- EF-1 (HOOD-1)

 ACCUREX	DIRECT CHAIN ACX JOE AYUB JOE.AYUB@ACCUREX.COM (857)272-8727	PROJECT: 10/13/2025	MARK: CERTIFICATION	CHIPOTLE-ODESSA EAST 5852	

FIRE SYSTEM INFORMATION

MARK	MODEL	LOCATION	FLOW POINTS		SUPPLY LINE	DETECTION	MARK(S) PROTECTED BY FIRE SYSTEM
			HOODS	PCU			
FSS	ANSUL R-102 WET CHEMICAL	CABINET – RIGHT END OF HOOD-1	20 UTILIZED 22 AVAILABLE		CONTINUOUS	FUSIBLE LINK	HOOD-1 SECTION 1

FIRE SYSTEM OPTIONS AND ACCESSORIES

FULL INSTALLATION (INCLUDES PRE-PIPED HOOD(S) WITH DETECTION AND FACTORY COORDINATED INSTALL)
 CHROME SLEEVES FOR FACTORY PROVIDED APPLIANCES DROPS - INCLUDED
 METAL BLOW-OFF CAPS - INCLUDED
 GAS VALVE - INCLUDED - ELECTRICAL SHUTOFF VALVE, 1.5", 110V, 60HZ - PART# 455396
 HOOD SUPPRESSION TANK - INCLUDED - 6 GAL. - [(2) 3.0 TANK(S)]
 REMOTE PULL STATION - STANDARD - FIELD INSTALLATION AT SINGLE POINT OF EGRESS

ANSUL R102 (WET CHEMICAL) FIRE PROTECTION SYSTEM - MODEL FSSC

CONTROL PANEL

NOTES:

WET CHEMICAL FIRE PROTECTION SYSTEM TO BE ANSUL R-102, DESIGNED IN COMPLIANCE WITH UL 300 REQUIREMENTS.

- VERIFICATION OF ALL COOKING EQUIPMENT MAKE, MODEL AND LOCATION REQUIRED FOR ALL FIRE PROTECTION SYSTEMS.
- ALL FIRE SYSTEM PIPING IS STANDARDLY TO THE RIGHT END OF THE HOOD UNLESS A WALL IS LOCATED ON THE RIGHT END.
- ANSUL AUTOMAN RELEASE TO BE LOCATED WITHIN 60" OF HOOD.

THE BASIC FIRE SYSTEM WILL INCLUDE THE FOLLOWING:

- GAS SHUT-OFF VALVE, IF REQUIRED, TO BE SUPPLIED BY MANUFACTURER (UP TO 2" DIAMETER AS STANDARD), AND INSTALLED BY A LICENSED PLUMBER.
- MICRO SWITCH TO BE SUPPLIED BY MANUFACTURER FOR CONNECTION TO, BUT NOT LIMITED TO, BUILDING ALARM SYSTEM(S), EXHAUST AND SUPPLY FANS AND ELECTRICAL POWER SHUT DOWN. FIELD WIRING AND CONNECTIONS TO BE PERFORMED BY A LICENSED ELECTRICIAN.

THE BASIC FIRE SYSTEM DOES NOT INCLUDE THE FOLLOWING:

- FULL DUMP TEST OTHER THAN WHAT IS SPECIFIED PER THE INSTALLATION MANUAL, OR TO SATISFY A STATE OR LOCAL CODE. PERMIT AND TESTING FEES ARE NOT INCLUDED UNLESS NOTED UNDER THE EQUIPMENT SCHEDULE FOR THE FIRE SYSTEM.
- MORE THAN TWO TRIPS TO THE JOBSITE OR SPECIAL TRANSPORTATION, OR OVERNIGHT LODGING REQUIREMENTS IN REMOTE AREAS. NORMAL TRAVEL DISTANCE IS FIRST 50 MI. (80.5 KM) FROM OFFICE.
- SPECIAL CLASSES OR ADDITIONAL LABOR FOR ACCESS TO SECURITY SENSITIVE AREAS.
- INSTALLATION OF GAS SHUT-OFF VALVE.
- SPECIAL DRAWINGS REQUIRED TO SATISFY STATE OR LOCAL CODE. PLAN EXAMINATION FEES, PE OR FS APPROVAL STAMP.
- UNION LABOR, GOVERNMENT LABOR, OR PREVAILING WAGES REQUIRED FOR FINAL FIELD HOOK-UP.
- ANY AND ALL ELECTRICAL COMPONENTS/CONNECTIONS REQUIRED TO SHUT DOWN FANS, SHUT OFF DEVICE FOR ELECTRIC COOKING EQUIPMENT (SHUNT TRIP BREAKER), OR ACTIVATE AN ALARM SYSTEM, ETC.
- ANY DISMANTLING OR REASSEMBLY REQUIRED TO GAIN ACCESS TO THE FIRE SUPPRESSION PIPING LOCATED ON THE TOP OF THE HOOD.
- ROUGH-IN HIDDEN CONDUIT FOR REMOTE PULL STATION OR GAS VALVE (FLUSH MOUNTED PULL STATION).
- INSTALLATION OF MORE THAN (1) REMOTE PULL STATIONS OR DISTANCES GREATER THAN 20 FT (6.1M).
- PARTS OR LABOR REQUIRED TO CORRECT PIPING DUE TO COOKING EQUIPMENT CHANGES OR DEVIATION FROM PLANS. OR ANY CHARGES FOR MISSING OR ADDITIONAL PARTS OTHER THAN THOSE INDICATED ON THE FIRE SUPPRESSION DETAIL.

WIRING DIAGRAM FOR MICRO SWITCHES

NOTES:

IF ELECTRIC RELEASE, BOTH UPPER SWITCHES WILL BE USED FOR ACTUATING ADDITIONAL AUTOMANS (THEY WILL BE WIRED TO EACH OTHER AND TO THE BROWN WIRE ON THE ELECTRIC SOLENOID). THEREFORE, USE ONE OF THE UN-UTILIZED LOWER SWITCHES TO WIRE BACK TO CONTROL PANEL (DO NOT USE EITHER OF THE UPPER SWITCHES).

IF USING LOWER SWITCHES TO WIRE BACK TO CONTROL PANEL, NORMALLY-CLOSED WILL BE BLACK LEAD, AND NORMALLY-OPEN WILL BE BROWN LEAD.

DPDT SWITCHES PROVIDED BY MANUFACTURER MAY BE WIRED PER TYPICAL EXAMPLES SHOWN. VERIFY WITH LOCAL CODES AND EQUIPMENT SUPPLIED AS THE CONNECTION NEEDED FOR YOUR INSTALLATION.

WIRING DIAGRAM FOR MANUAL RESET RELAY (ELECTRIC GAS VALVE ONLY)

NOTES:

1. --- DENOTES FIELD INSTALLATION.

2. ——— DENOTES FACTORY INSTALLATION.

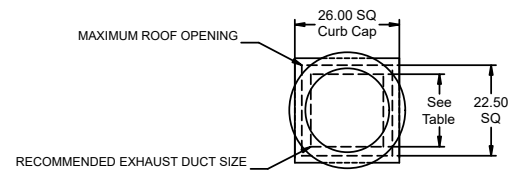
Direct Drive Upblast Centrifugal Roof Exhaust Fan

MARK INFORMATION		FAN INFORMATION									SOUND INFORMATION					MOTOR INFORMATION								
MARK	QTY	MODEL	DRIVE TYPE	VOLUME (CFM)	EXTERNAL SP (IN. WG)	TOTAL EXTERNAL SP (IN. WG)	FAN SPEED (RPM)	OUTLET VELOCITY (FT/MIN)	FEI	TOTAL WEIGHT (LB)	INLET dBA	INLET SONES	INLET SONES (SPHERICAL)	OUTLET dBA	OUTLET SONES	OPERATING POWER (HP)	MOTOR SIZE (HP)	FEP INPUT POWER (KW)	ENCLOSURE	VOLTAGE	CYCLE	PHASE	EC MOTOR	NEC FLA*
EF-1 (Hood-1)	1	XCUE-160-VG	Direct	2,550	1.2	1.2	1,330	1,482.56	1.4	110	68.74	16.82	0	0	0	0.87	2	0.78	TF	208	60	1	VariGreen	13.2

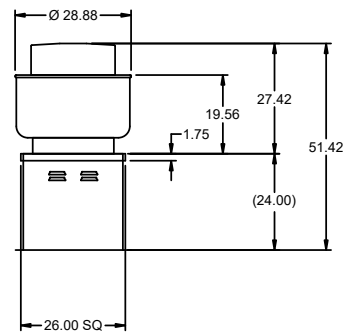
*NEC FLA - Based on table 430.250 or 430.248 of National Electrical Code 2020. Actual motor FLA may vary for sizing thermal overload, consult factory"

EF-1 (Hood-1) : SELECTED OPTIONS AND ACCESSORIES

One piece fully welded windband
 Tapered bushing wheel hub
 Breather tube outlet area min. 4.4 sq. in. (sizes 99-480), 2.0 sq. in. (sizes 60-95)
 Min. windband material thickness: 0.051" aluminum (060-240), 0.064" aluminum (240HP, 240XP), 0.080" aluminum (sizes 300-480)
 Curb Cap Size - 26 Square
 UL/cUL 705 Listed - Supplement SC - "Power Ventilators for Restaurant Exh. Appliances" (Formerly UL 762)
 Switch, NEMA-3R, Toggle,
 Aluminum Wheel Material

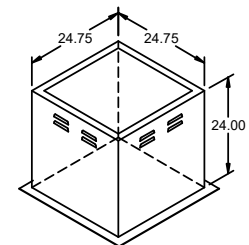


DUCT TYPE	SIZE
STANDARD	18 SQ
FIRE-WRAPPED	12 SQ



DUCT DIMENSIONS ARE LARGEST POSSIBLE DUCT TO FIT THROUGH CURB.
 CONSULT SYSTEM DESIGN ENGINEER FOR RECOMMENDED DUCT SIZE.

OVERALL HEIGHT MAY BE GREATER DEPENDING ON
 MOTOR, ADAPTER, AND/OR HINGE BASE.

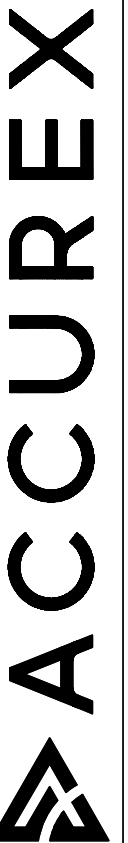


PROJECT
10/13/2025

MARK
EF-1 (HOOD-1)

CHIPOTLE-ODESSA EAST 5852

DIRECT CHAIN ACX
 JOE - AYUB
 JOE.AYUB@ACCUREX.COM
 (857)272-8727

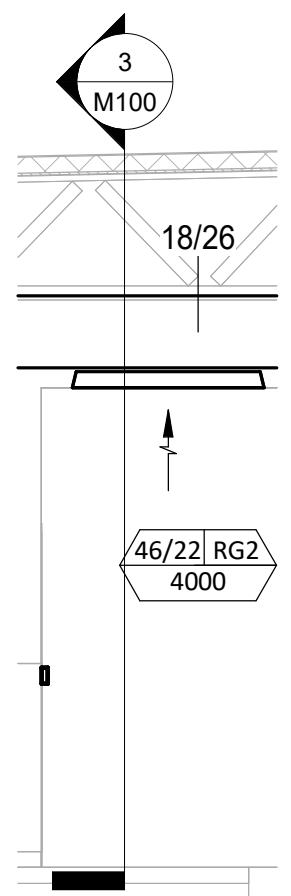


HVAC PLAN NOTES

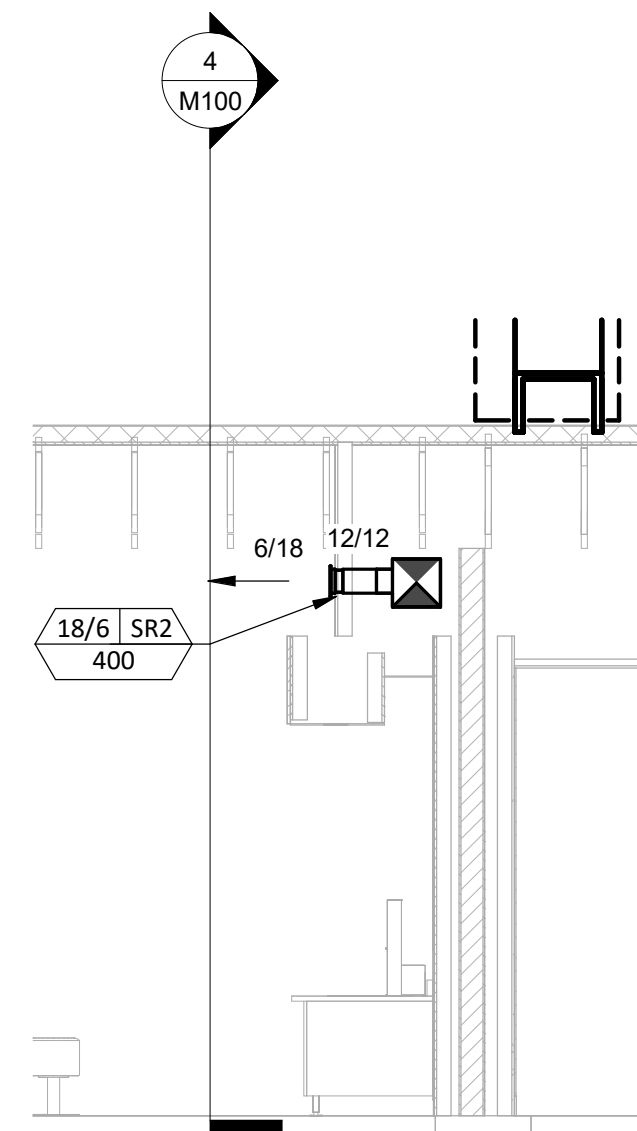
- SEE ARCHITECTURAL REFLECTED CEILING PLAN FOR CEILING MOUNTED EQUIPMENT LOCATION. TYPICAL.
- PAINT DUCTWORK VISIBLE THROUGH DINING ROOM SUPPLY REGISTERS BLACK. TYPICAL.
- PENETRATIONS THROUGH SHEAR WALL SHALL BE LIMITED TO 10" DIAMETER (OR A GROUP OF PENETRATIONS ALL CONTAINED WITHIN 10" DIAMETER). IF LARGER PENETRATIONS OR GROUPS OF PENETRATIONS ARE REQUIRED COORDINATE WITH STRUCTURAL ENGINEER FOR APPROPRIATE BRACING. SEE STRUCTURAL DRAWINGS FOR SHEAR WALL LOCATION.
- 26/18 DUCT UP FOR TRANSITION TO RTU-1 RETURN CONNECTION IN ROOF CURB. RTU-1 SHALL HAVE AN INTEGRAL SMOKE DETECTOR MOUNTED IN THE RETURN AIR STREAM. INTERLOCK SMOKE DETECTOR TO RTU-1 OPERATION.
- 26/18 DUCT UP FOR TRANSITION TO RTU-2 RETURN CONNECTION IN ROOF CURB. RTU-2 SHALL HAVE AN INTEGRAL SMOKE DETECTOR MOUNTED IN THE RETURN AIR STREAM. INTERLOCK SMOKE DETECTOR TO RTU-2 OPERATION.
- 26/18 DUCT UP FROM BUILDING SUPPLY THROUGH ROOF. TRANSITION TO RTU-1 SUPPLY CONNECTION IN ROOF CURB.
- 26/18 DUCT UP FROM BUILDING SUPPLY TO RTU-2 SUPPLY CONNECTION. TRANSITION IN ROOF CURB.
- 14/14 DUCT UP THROUGH ROOF. TRANSITION TO MAU-1 SUPPLY CONNECTION IN ROOF CURB.
- 16/16 DUCT UP FROM HOOD THROUGH ROOF TO EF-1 COMPLIANT WITH NFPA 96. PROVIDE RADIUS ELBOWS WITH AN INSIDE RADIUS OF 0.5W AT ELBOWS IN GREASE DUCT.
- 8/6 DUCT UP THROUGH ROOF TO EF-2.
- 28/12 DUCT DOWN TO MAKEUP AIR PSP DUCT CONNECTION. TRANSITION TO SUPPLY PLENUM OPENING SIZE TYPICAL FOR 8".
- 8" DIA. DUCT DOWN TO AC PSP DUCT CONNECTION. TRANSITION TO SUPPLY PLENUM OPENING SIZE. TYPICAL. CAP UNUSED DUCT CONNECTIONS.
- INSTALL GRIDPOINT THERMOSTATS FURNISHED BY TEMS FOR RTU-1 (TS200) AND RTU-2 (TS200) AT THIS LOCATION AT 48" AFF. COORDINATE WITH ELECTRICAL SWITCHING IN THIS AREA. PROVIDE THERMOSTAT WIRING FROM EACH THERMOSTAT TO THE CORRESPONDING ROOFTOP UNIT. PROVIDE CATSE CABLE FROM RTU-1 TS200 TO J-BOX #2 ABOVE ELECTRICAL PANELS (LEAVE 16" OF CABLE COILED UP INSIDE OF J-BOX #2 ND 16" BEHIND WALL OF THERMOSTAT FOR FINAL CONNECTION TO THE EMS SYSTEM BY THE TEMS) AND LABEL BOTH ENDS OF CABLE "TS200". SEE GRIDPOINT INSTALLATION INSTRUCTIONS FOR TERMINATION INSTRUCTIONS.
- INSTALL GRIDPOINT ZONE SENSOR MODULE FURNISHED BY TEMS FOR RTU-1 AT THIS LOCATION 84" AFF DIRECTLY TO WALL (NO JUNCTION BOX). COORDINATE LOCATION WITH EQUIPMENT. PROVIDE 18G-24G SHIELDED TWISTED PAIR FROM ZSM TO RTU-1 THERMOSTAT T1 TERMINALS. SEE GRIDPOINT INSTALLATION INSTRUCTIONS FOR TERMINATION INSTRUCTIONS.
- INSTALL GRIDPOINT ZONE SENSOR MODULE FURNISHED BY TEMS FOR RTU-2 AT THIS LOCATION 60" AFF DIRECTLY TO WALL (NO JUNCTION BOX). COORDINATE LOCATION WITH EQUIPMENT. PROVIDE 18G-24G SHIELDED TWISTED PAIR FROM ZSM TO RTU-2 THERMOSTAT T1 TERMINALS. SEE GRIDPOINT INSTALLATION INSTRUCTIONS FOR TERMINATION INSTRUCTIONS.
- INSTALL GRIDPOINT SUPPLY PROBE FURNISHED BY TEMS FOR RTU-1 IN THE SUPPLY DUCTWORK UPSTREAM FROM THE FIRST BRANCH CONNECTION. PROVIDE 18G-24G SHIELDED TWISTED PAIR FROM SUPPLY PROBE TO RTU-1 THERMOSTAT T2 TERMINALS. SEE GRIDPOINT INSTALLATION INSTRUCTIONS FOR TERMINATION INSTRUCTIONS.
- INSTALL GRIDPOINT SUPPLY PROBE FURNISHED BY TEMS FOR RTU-2 IN THE SUPPLY DUCTWORK UPSTREAM FROM THE FIRST BRANCH CONNECTION. PROVIDE 18G-24G SHIELDED TWISTED PAIR FROM SUPPLY PROBE TO RTU-2 THERMOSTAT T2 TERMINALS. SEE GRIDPOINT INSTALLATION INSTRUCTIONS FOR TERMINATION INSTRUCTIONS.
- INSTALL REMOTE TEMPERATURE SENSOR FOR HOOD HD-1 AT THIS LOCATION 84" AFF. COORDINATE LOCATION WITH EQUIPMENT. PROVIDE (2) #18 G. THERMISTOR CABLE FROM TEMPERATURE SENSOR TO HOOD CONTROL PANEL.

HVAC PLAN NOTES

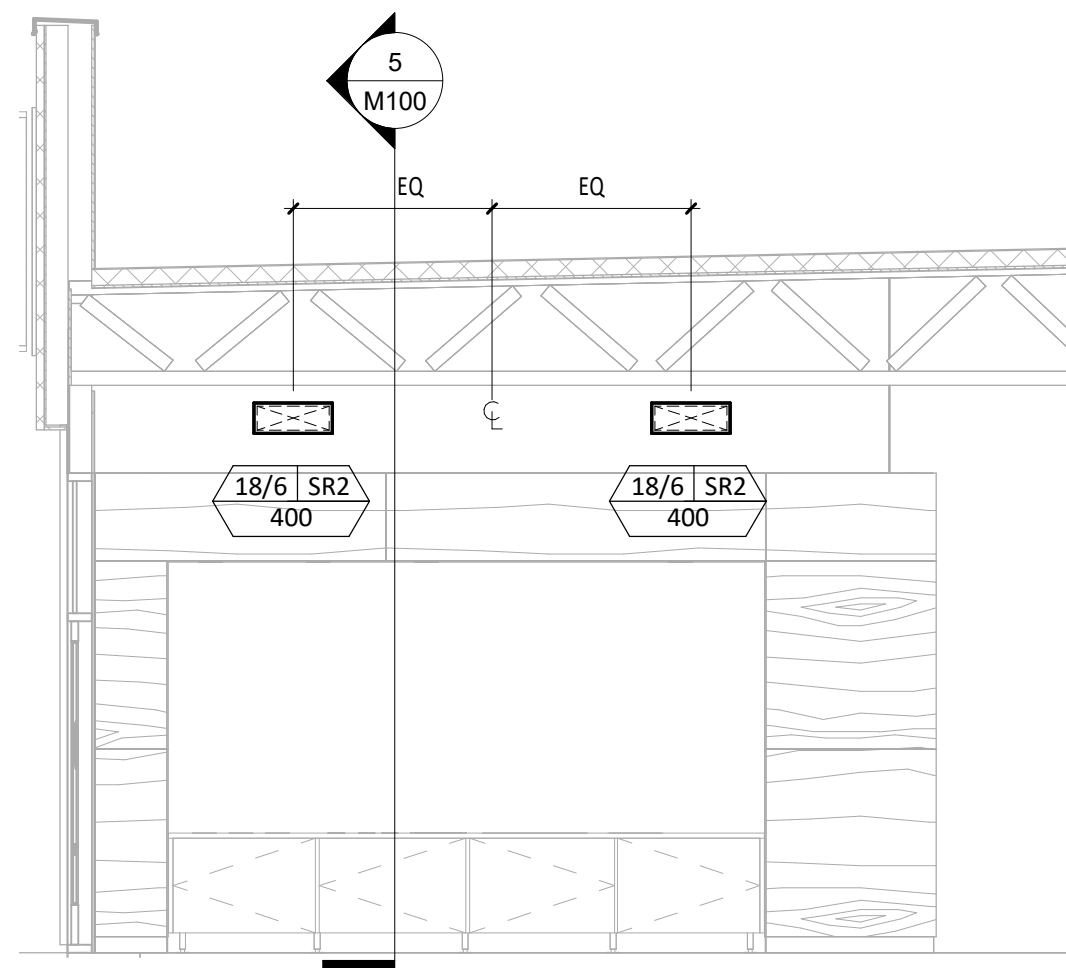
- INSTALL KITCHEN HOOD, HD-1. SUPPORT HOOD PER MANUFACTURER'S INSTALLATION INSTRUCTIONS AND AS DETAILED IN THE ARCHITECTURAL AND STRUCTURAL DRAWINGS. INSTALL HOOD ACCORDING TO THE REQUIREMENTS OF ITS LISTING, IN COMPLIANCE WITH NFPA 96, THE BUILDING CODE, AND AUTHORITIES HAVING JURISDICTION. HOOD SHALL HAVE AN INTEGRAL DUCT COLLAR TEMPERATURE SENSOR TO AUTOMATICALLY ENERGIZE THE EXHAUST AND MAKEUP AIR FANS IF COOKING TEMPERATURES ARE DETECTED. EXHAUST DUCT SYSTEM TO BE WELDED OR FACTORY-MANUFACTURED WATER AND AIR TIGHT. INSTALL CLEANOUTS PER CODE AND AS SHOWN. INSTALL HOOD PER DETAILS 2 AND 4/M700. CHIPOTLE WILL PROVIDE AN INDEPENDENT TESTING AGENCY FOR TESTING THE INTEGRITY OF THE GREASE DUCT SYSTEM.
- INSTALL REMOTE CONDENSING UNIT FOR WALK-IN COOLER ON ROOF AS DETAILED IN THE ARCHITECTURAL AND STRUCTURAL DRAWINGS. CMG VENDOR TO INSTALL REFRIGERANT LINE SET, THERMOSTATIC EXPANSION VALVE, SOLENOID VALVE, TEMPERATURE CONTROL, SIGHT GLASS, FILTER DRIER, PRESSURE CONTROL, LOW AMBIENT CONTROLS, AND WEATHERPROOF HOUSING. TRAP AND SLOPE REFRIGERANT LINES PER MANUFACTURER'S RECOMMENDATIONS. INSTALLATION SHALL COMPLY WITH ASHRAE/ANSI STANDARD 15. INSTALL THE REFRIGERANT LINE SET UNDER THE ROOF DECK TO WITHIN 3' OF THE CONDENSING UNIT. CUT 2-1/2" HOLE IN WALK-IN COOLER ROOF FOR REFRIGERANT LINE SET AND SEAL PER THE COOLER MANUFACTURER'S INSTALLATION INSTRUCTIONS AFTER LINE SET IS INSTALLED.
- INSTALL REMOTE CONDENSER FOR ICE MACHINE ON ROOF AS DETAILED IN THE ARCHITECTURAL AND STRUCTURAL DRAWINGS. CMG VENDOR TO INSTALL REFRIGERANT LINE SET, THERMOSTATIC EXPANSION VALVE, TEMPERATURE CONTROL, SIGHT GLASS, FILTER DRIER, PRESSURE CONTROL, LOW AMBIENT CONTROLS, AND WEATHERPROOF HOUSING. TRAP AND SLOPE REFRIGERANT LINES PER MANUFACTURER'S RECOMMENDATIONS. SEAL PIPING PENETRATIONS THROUGH ROOF. INSTALLATION SHALL COMPLY WITH ASHRAE/ANSI STANDARD 15. INSTALL THE REFRIGERANT LINE SET UNDER THE ROOF DECK TO WITHIN 3' OF THE REMOTE CONDENSER. IF REFRIGERANT PIPING TO ICE MAKER IS EXPOSED TO PUBLIC VIEW CONCEAL WITHIN A STAINLESS STEEL SHROUD AS SHOWN IN THE ARCHITECTURAL DRAWINGS.
- INSTALL ROOFTOP EQUIPMENT PER MANUFACTURER'S INSTALLATION INSTRUCTIONS AND AS DETAILED IN THE ARCHITECTURAL AND STRUCTURAL DRAWINGS.
- INSTALL EXHAUST FAN EF-1 PER DETAIL 5/M700 AND AS DETAILED IN THE ARCHITECTURAL AND STRUCTURAL DRAWINGS. INSTALL GREASE VIROGUARD SYSTEM FURNISHED BY CHIPOTLE ON EXHAUST FAN, EF-1.
- PROVIDE SUPPLY DIFFUSER CONNECTION TO SUPPLY SYSTEM PER DETAIL 1/M700. TYPICAL.
- PROVIDE AUDIO/VISUAL REMOTE SMOKE DETECTOR ANNUNCIATOR WITH REMOTE KEY OPERATED RESET. WIRE A UNIT BACK TO EACH SMOKE DETECTOR. MOUNT UNIT 60" AFF. TYPICAL.
- INSTALL REME HALO AIR PURIFIER FURNISHED BY TUV IN RTU PER DETAIL 6/M700. SEE ELECTRICAL DRAWINGS FOR POWER CONNECTION INFORMATION. INSTALL UV WARNING STICKERS ON FACE OF ENCLOSURE PER DETAIL AND ON ANY RTU ACCESS DOOR(S) THROUGH WHICH THE REME HALO WOULD BE VISIBLE IF OPENED.
- MAINTAIN 10' CLEARANCE BETWEEN WATER HEATER TERMINATION AND OUTSIDE AIR INTAKES. MAINTAIN 10' CLEARANCE BETWEEN WATER HEATER COMBUSTION AIR INTAKE AND EXHAUST FAN EF-1 DISCHARGE. SEE PLUMBING DRAWINGS FOR MORE INFORMATION ON WATER HEATER FLUE AND COMBUSTION AIR TERMINATIONS.
- ADJUST SUPPLY REGISTERS SO THAT SUPPLY AIR HITS WALL ON OPPOSITE SIDE OF ROOM AT APPROXIMATELY 7' AFF WITH NO DRAFTS FELT IN THE DINING ROOM.



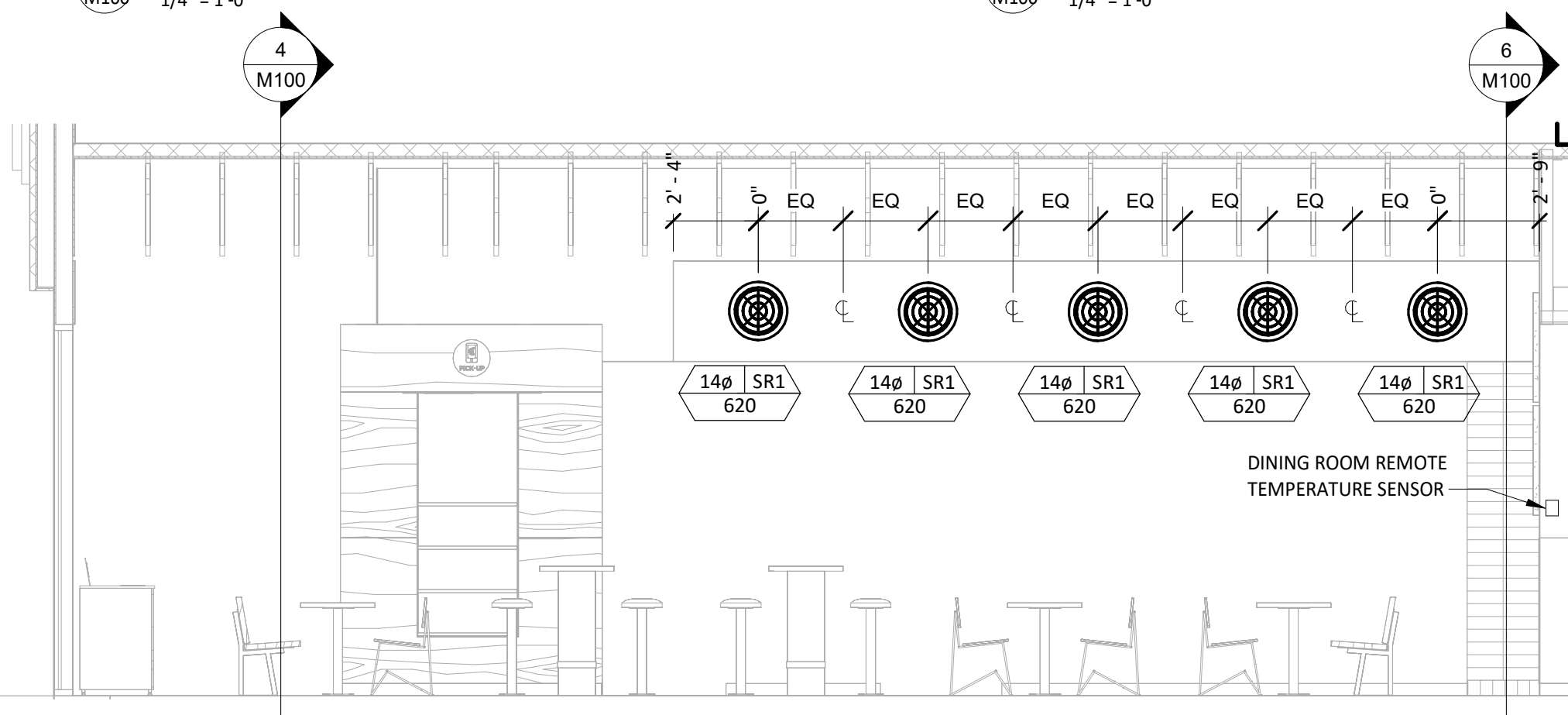
6 M100
1/4" = 1'-0"



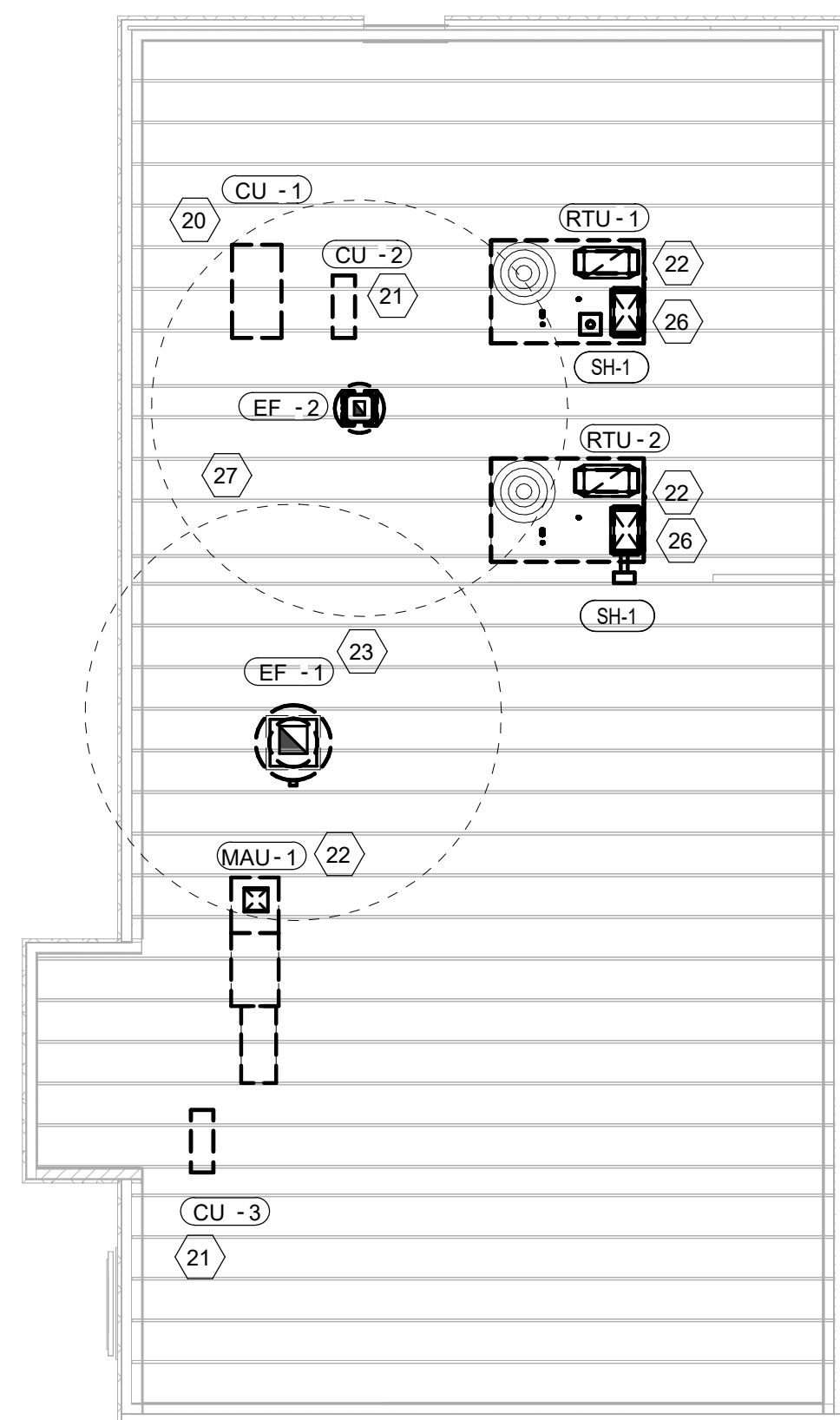
5 M100
1/4" = 1'-0"



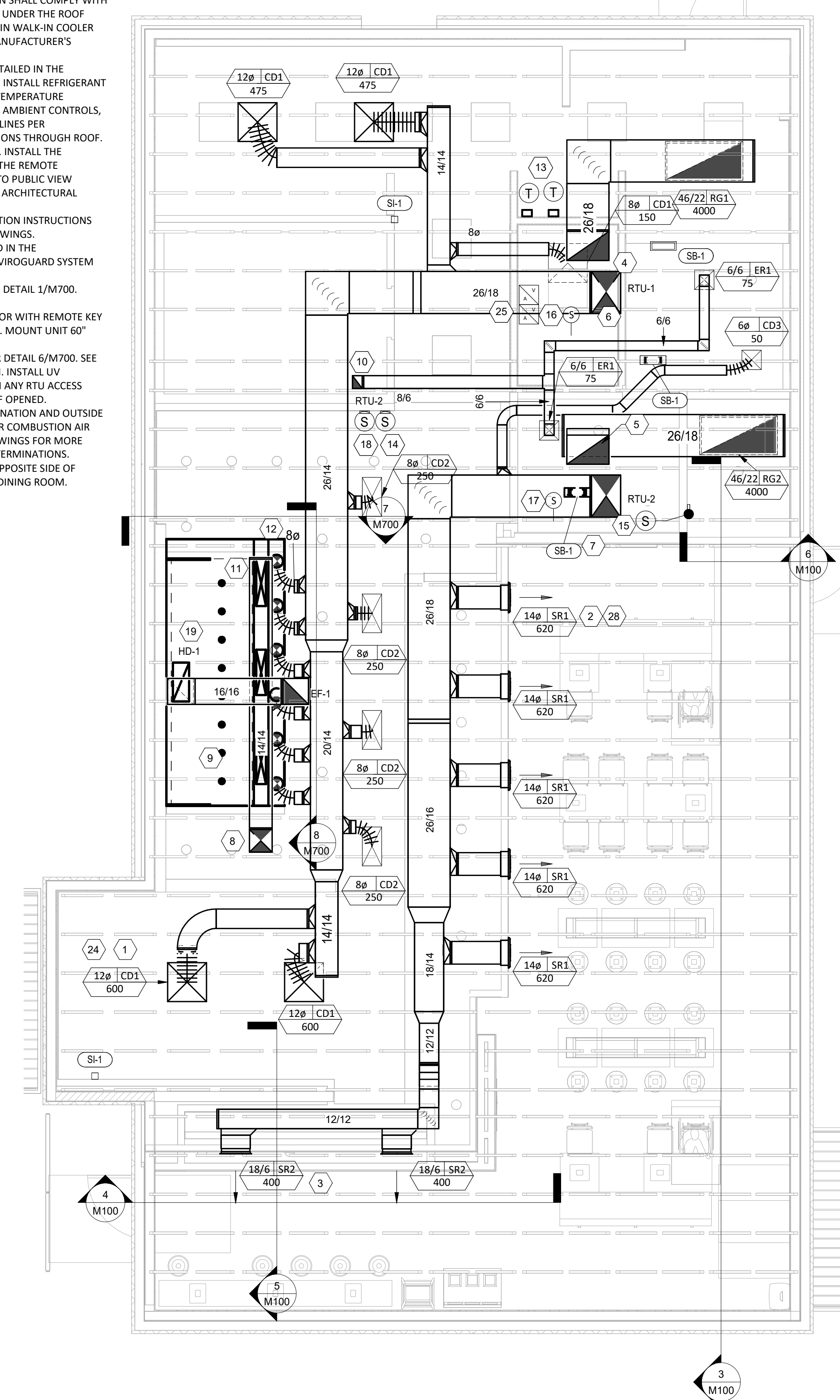
4 M100
1/4" = 1'-0"



3 M100
1/4" = 1'-0"

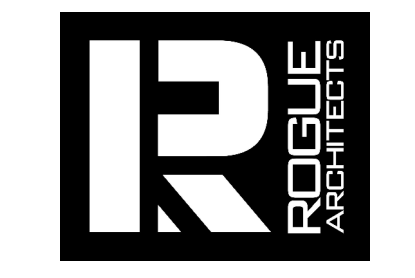


2 M100
1/8" = 1'-0"



1 M100
1/4" = 1'-0"

ARCHITECT OF RECORD



513 MAIN STREET, SUITE 300
FORT WORTH, TEXAS 76102
(817) 820-0433

SEAL



PERMIT SET - 06/04/2025

COPYRIGHT 2019
THIS DRAWING IS AN INSTRUMENT OF SERVICE
AND AS SUCH REMAINS THE PROPERTY OF
CHIPOTLE MEXICAN GRILL, INC. PERMISSION FOR
USE OF THIS DOCUMENT IS LIMITED AND CAN BE
EXTENDED ONLY BY WRITTEN AGREEMENT WITH
CHIPOTLE MEXICAN GRILL, INC.



CHIPOTLE MEXICAN GRILL, INC.
PO BOX 182566
COLUMBUS, OH 43218-2566
TELEPHONE: 614.338.2400
INTERNET: WWW.CHIPOTLE.COM

STORE NO.: 5852
ODESSA EAST
8009 TX-191
ODESSA, TX 79765

Issue Record:
06/04/25 PERMIT SET

Revisions:
1 07/23/2025 Construction Set

Drawn: JW
Checked: JV

Project No.
25-0068

Contents:

HVAC PLAN



M100



513 MAIN STREET, SUITE 300
FORT WORTH, TEXAS 76102
(817) 820-0433

SEAL



PERMIT SET - 06/04/2025

COPYRIGHT 2019
THIS DRAWING IS AN INSTRUMENT OF SERVICE
AND AS SUCH REMAINS THE PROPERTY OF
CHIPOTLE MEXICAN GRILL, INC. PERMISSION FOR
USE OF THIS DOCUMENT IS LIMITED AND CAN BE
EXTENDED ONLY BY WRITTEN AGREEMENT WITH
CHIPOTLE MEXICAN GRILL, INC.



CHIPOTLE MEXICAN GRILL, INC.
PO BOX 182556
COLUMBUS, OH 43218-2566
TELEPHONE: 614.318.2400
INTERNET: WWW.CHIPOTLE.COM

STORE NO.: 5852
ODESSA EAST
8009 TX-191
ODESSA, TX 79765

Issue Record:
06/04/25 PERMIT SET

Revisions:
1 07/23/2025 Construction Set

Drawn: JW Checked: JW

Project No:
25-0068

Contents:

MECHANICAL
SCHEDULES

M600

AIR BALANCE SCHEDULE

TAG	SUPPLY FLOW	RETURN FLOW	EXHAUST FLOW	SUBTOTAL
EF-1	0 CFM	0 CFM	2,550 CFM	-2,550 CFM
EF-2	0 CFM	0 CFM	150 CFM	-150 CFM
MAU-1	1,300 CFM	0 CFM	0 CFM	1,300 CFM
RTU-1	4,000 CFM	3,500 CFM	0 CFM	500 CFM
RTU-2	4,000 CFM	3,000 CFM	0 CFM	1,000 CFM
NET PRESSURIZATION				100 CFM

CONTROL FUNCTIONS

- A. THE MAIN COOKING EXHAUST FAN AND MAKE-UP AIR UNIT SHALL BE INTERLOCKED TO OPERATE TOGETHER. THIS CONTROL CIRCUIT IS ACTIVATED BY A SWITCH AND INCLUDES A FIRE PROTECTION OVERRIDE.
- B. THE TEMPERATURE IN EACH ZONE IS CONTROLLED BY SPACE TEMPERATURE SENSORS CONNECTED TO THE THERMOSTATS LOCATED IN THE OFFICE. ALL ZONES SHALL OPERATE WITH CONTINUOUS FAN OPERATION DURING OCCUPIED TIMES AND INTERMITTENTLY AS NEEDED TO MAINTAIN SET POINTS DURING UNOCCUPIED TIMES. OUTSIDE AIR DAMPERS SHALL BE OPEN CONTINUOUSLY WHEN EITHER IN OCCUPIED MODE OR WHEN THE HOOD SYSTEM IS ON AND SHALL BE CLOSED DURING UNOCCUPIED PERIODS.
- C. THE THERMOSTATS SHALL DETERMINE OCCUPIED/UNOCCUPIED STATUS BASED ON THE SCHEDULE IN THE ENERGY MANAGEMENT SYSTEM.

SANITIZING EQUIPMENT SCHEDULE

TAG	COUNT	DESCRIPTION	FURNISHED BY	INSTALLED BY	BASIS FOR DESIGN		REMARKS
					MANUFACTURER	MODEL	
SB-1	2	BATHROOM AIR PURIFICATION UNIT	TUV	GC	RGF ENVIRONMENTAL GROUP	BRU ASSEMBLY	SEE ELECTRICAL SHEETS FOR CONNECTION INFORMATION
SH-1	2	HVAC AIR PURIFICATION UNIT	TUV	GC	RGF ENVIRONMENTAL GROUP	REME-HALO	SEE DETAIL 6/M700 FOR INSTALLATION INFORMATION.
SI-1	3	ICE MACHINE TREATMENT SYSTEM	TUV	GC	RGF ENVIRONMENTAL GROUP	IMS-B-GA	SEE PLUMBING DRAWINGS FOR INSTALLATION INFORMATION.

FAN SCHEDULE

TAG	DESCRIPTION	AIRFLOW	E.S.P.	WEIGHT	ELECTRICAL		FURNISHED BY	INSTALLED BY	BASIS FOR DESIGN		REMARKS
					MOTOR POWER	V/P/H			MANUFACTURER	MODEL	
EF-1	UPBLAST GREASE EXHAUST FAN	2,550 CFM	1.20 in-wg	106 lb	2 hp	208/1/60	HS	GC	ACCUREX	XCUE-160-VG	DIRECT DRIVE DU180HFA UPBLAST EXHAUST FAN FURNISHED WITH WEATHERPROOF DISCONNECT AND VENTED ROOF CURB
EF-2	DOWNBLAST RESTROOM EXHAUST FAN	150 CFM	0.60 in-wg	43.2 lb	0.25 hp	115/1/60	HS	GC	ACCUREX	XRED-097-VG	DIRECT DRIVE DOWNBLAST RESTROOM EXHAUST FAN FURNISHED WITH INTEGRAL DISCONNECT, SPEED CONTROL, BACKDRAFT DAMPER, AND CURB

VIROGUARD SCHEDULE

TAG	COUNT	DESCRIPTION	DUCT CONNECTION SIZE	FAN	FURNISHED BY	INSTALLED BY	BASIS FOR DESIGN MANUFACTURER
VG-1	1	VIROGUARD HOOD EXHAUST FAN ROOFTOP CONTAINMENT SYSTEM	16" X 16"	ACCUREX XRED-097-VG	TDC	GC	ENVIROMATIC

AIR TERMINAL SCHEDULE

TAG	DESCRIPTION	FACE SIZE	MATERIAL	FINISH	MOUNTING	FURNISHED BY	INSTALLED BY	BASIS FOR DESIGN		NOTES
								MANUFACTURER	MODEL	
CD1	PERFORATED CEILING DIFFUSER	24" X 24"	ALUMINUM	WHITE	LAY-IN CEILING	GC	GC	NAILOR	4320A TYPE L	PROVIDE WITH INTEGRAL OBD
CD2	PERFORATED CEILING DIFFUSER	24" X 12"	ALUMINUM	WHITE	LAY-IN CEILING	GC	GC	NAILOR	4320A TYPE L	PROVIDE WITH INTEGRAL OBD, REMOVE 4-WAY DEFLECTORS
CD3	PERFORATED CEILING DIFFUSER	12" X 12"	ALUMINUM	WHITE	SURFACE MOUNT	GC	GC	NAILOR	4320A TYPE S	PROVIDE WITH INTEGRAL OBD
ER1	PERFORATED CEILING EXHAUST	12" X 12"	ALUMINUM	WHITE	SURFACE MOUNT	GC	GC	NAILOR	4330R TYPE S	PROVIDE INTEGRAL OBD
RG1	PERFORATED CEILING RETURN	48" X 24"	ALUMINUM	WHITE	LAY-IN CEILING	GC	GC	NAILOR	4330R TYPE L	
SR1	ADJUSTABLE TURBO NOZZLE	SEE NECK SIZE	ALUMINUM	WHITE	WALL	GC	GC	AIR CONCEPTS	ANC-RR	PROVIDE WITH CONCEALED MOUNTING AND FACE-ACCESSIBLE OBD
SR2	ARCHITECTURAL GRILLE	18"x6"	ALUMINUM	WHITE	WALL	GC	GC	AIR CONCEPTS	RGDD-F	PROVIDE WITH CONCEALED MOUNTING AND FACE-ACCESSIBLE OBD

CONDENSING UNIT SCHEDULE

TAG	DESCRIPTION	NOMINAL CAPACITY	NUMBER OF		REFRIGERANT		WEIGHT	ELECTRICAL			FURNISHED BY	INSTALLED BY	BASIS FOR DESIGN		REMARKS
			COMPRESSORS	CIRCUITS	TYPE	CHARGE		MOC	FLA	V/P/H			MANUFACTURER	MODEL	
CU-1	CONDENSING UNIT - WALK-IN COOLER		1	1	R-404A	10.4 lb	250 lb	15 A	9 A	208/1/60	WCS	GC	RUSSELL DOE	RF0060M4SDAALNT	FURNISHED WITH WALK-IN COOLER
CU-2	REMOTE CONDENSER - LOW CAPACITY ICE MAKER		0	1	R-404A	11.46 lb	100 lb			120/1/60	KES	GC	HOSHIZAKI	URC-9F	FURNISHED WITH ICE MAKER
CU-3	REMOTE CONDENSER - SODA MACHINE ICE MAKER		0	1	R-404A	3.86 lb	100 lb			120/1/60	KES	GC	HOSHIZAKI	URC-5F	FURNISHED WITH ICE MAKER

MAKEUP AIR UNIT SCHEDULE

TAG	DESCRIPTION	AIRFLOW	E.S.P.	HEATING			WEIGHT	ELECTRICAL		FURNISHED BY	INSTALLED BY	BASIS FOR DESIGN		REMARKS
				INPUT	OUTPUT	EAT		MCA/MOC	V/P/H			MANUFACTURER	MODEL	
MAU-1	DIRECT-FIRED MAKEUP AIR UNIT	1,300 CFM	0.50 in-wg	91,600 Btu/h	84,200 Btu/h	10 °F	421 lb	21.3/35.0	115/60/1	HS	GC	ACCUREX	XDGX-P115-H05-VG	12.5:1 MAX TURNDOWN. FURNISHED WITH DISCONNECT, ROOF CURB, SCREEN INTAKE, AND WASHABLE ALUMINUM FILTERS

KITCHEN HOOD SCHEDULE

TAG	DESCRIPTION	MAX COOKING TEMP.	AIRFLOW	E.S.P.	EXHAUST PLENUM				PERFORATED SUPPLY PLENUMS								NO. OF LIGHT FIXTURES	WEIGHT	FURNISHED BY	INSTALLED BY	BASIS FOR DESIGN		REMARKS		
					DUCT COLLARS				MAU PLENUM				AC PLENUM								MANUFACTURER	MODEL			
					NO.	WIDTH	LENGTH	LENGTH	NO.	WIDTH	LENGTH	LENGTH	NO.	WIDTH	LENGTH	LENGTH								NO.	DIAMETER
HD-1	TYPE I CANOPY HOOD WITH PERFORATED MAU AND AC SUPPLY PLENUMS	600 °F	2,550 CFM	0.96 in-wg	1	10"	24"	13'-9"	4'-6"	13'-9"	24"	1,300 CFM	4	12"	2'-4"	696 CFM	6	8"	8	732 lb	HS	GC	ACCUREX	XXEW-153-S	MAT'L: 18 GA. TYPE 430 SS. FURNISHED WITH QUARTER END PANELS, VAPORPROOF INCANDESCENT LIGHT FIXTURES, 16" TALL HE SS FILTERS, INTEGRAL UTILITY CABINET, ANSUL SYSTEM, DUCT COLLAR TEMPERATURE SENSOR, PREWIRE PACKAGE, SPARE FIRE SYSTEM DRY CONTACT, AND 4-POLE 20A CONTACTOR

ROOFTOP UNIT SCHEDULE

TAG	DESCRIPTION	NOMINAL CAPACITY	EER	AIRFLOW			NET COOLING CAPACITY				HEATING CAPACITY			NUMBER OF		REFRIGERANT	WEIGHT	ELECTRICAL			FURNISHED BY	INSTALLED BY	BASIS FOR DESIGN		REMARKS		
				TOTAL	OA	E.S.P.	TOTAL	SENSIBLE	DB	WB	COND. EAT	INPUT	OUTPUT	EAT	COMPRESSORS			CIRCUITS	TYPE	MOC			FLA	V/P/H		MANUFACTURER	MODEL
RTU-1	KITCHEN ROOFTOP UNIT	10 ton	12	4,000 CFM	500 CFM	1.0 in-wg	118,000 Btu/h	91,000 Btu/h	80 °F	67 °F	80 °F	250,000 Btu/h	205,000 Btu/h	65 °F	2	2	R-410A	1,445 lb	60 A	58 A	208/3/60	CMG	GC	CARRIER	48FCFN12	FURNISHED WITH COMP. ENTHALPY ECON., BAROMETRIC RELIEF, RET. SMOKE DETECTOR W/ REMOTE KEYED ANNUNCIATOR/RESET, M.O.D., MERV-8 FILTERS, CURB, HAIL GUARD, TOOLLESS HINGED ACCESS PANELS, DISCONNECT, HOT GAS REHEAT & UNIT-MOUNTED CONVENIENCE RECEPTACLE	
RTU-2	DINING ROOM ROOFTOP UNIT	10 ton	12	4,000 CFM	1,000 CFM	1.0 in-wg	118,000 Btu/h	91,000 Btu/h	80 °F	67 °F	80 °F	250,000 Btu/h	205,000 Btu/h	65 °F	2	2	R-410A	1,445 lb	60 A	58 A	208/3/60	CMG	GC	CARRIER	48FCFN12	FURNISHED WITH COMP. ENTHALPY ECON., BAROMETRIC RELIEF, RET. SMOKE DETECTOR W/ REMOTE KEYED ANNUNCIATOR/RESET, M.O.D., MERV-8 FILTERS, CURB, HAIL GUARD, TOOLLESS HINGED ACCESS PANELS, DISCONNECT, HOT GAS REHEAT & UNIT-MOUNTED CONVENIENCE RECEPTACLE	



796 N. Main Street
St. Louis, MO 63105
CERTIFICATE OF AUTHORITY NO. F-20680

1 636.341.0600
1 800.281.7750



513 MAIN STREET, SUITE 300
FORT WORTH, TEXAS 76102
(817) 820-0433

SEAL



PERMIT SET - 06/04/2025

COPYRIGHT 2019
THIS DRAWING IS AN INSTRUMENT OF SERVICE
AND AS SUCH REMAINS THE PROPERTY OF
CHIPOTLE MEXICAN GRILL, INC.. PERMISSION FOR
USE OF THIS DOCUMENT IS LIMITED AND CAN BE
EXTENDED ONLY BY WRITTEN AGREEMENT WITH
CHIPOTLE MEXICAN GRILL, INC..



CHIPOTLE MEXICAN GRILL, INC.
PO BOX 182566
COLUMBUS, OH 43218-2566
TELEPHONE: 614.318.2400
INTERNET: WWW.CHIPOTLE.COM

STORE NO.: 5852
ODESSA EAST
8009 TX-191
ODESSA, TX 79765

Issue Record:

06/04/25 PERMIT SET

Revisions:

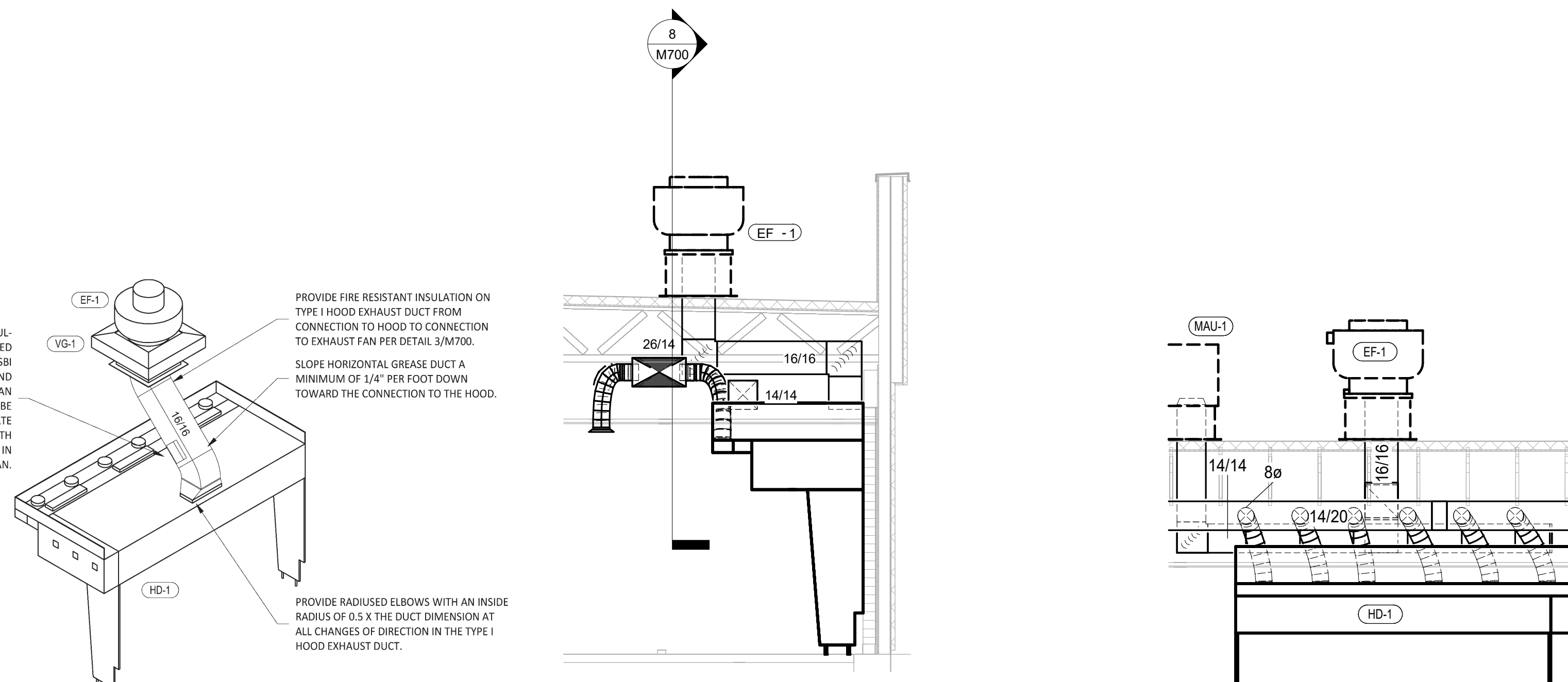
Drawn: JW Checked: JW

Project No. 25-0068

Contents:

MECHANICAL
DETAILS

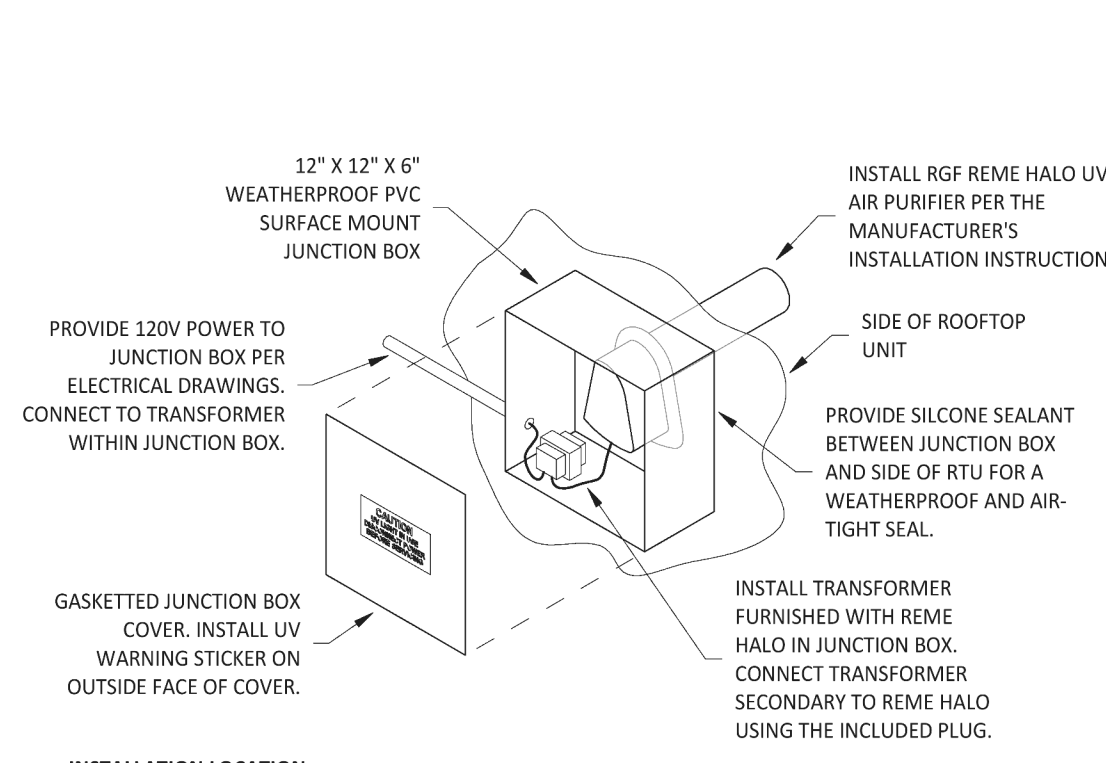
M700



9 HOOD EXHAUST ISOMETRIC
NOT TO SCALE

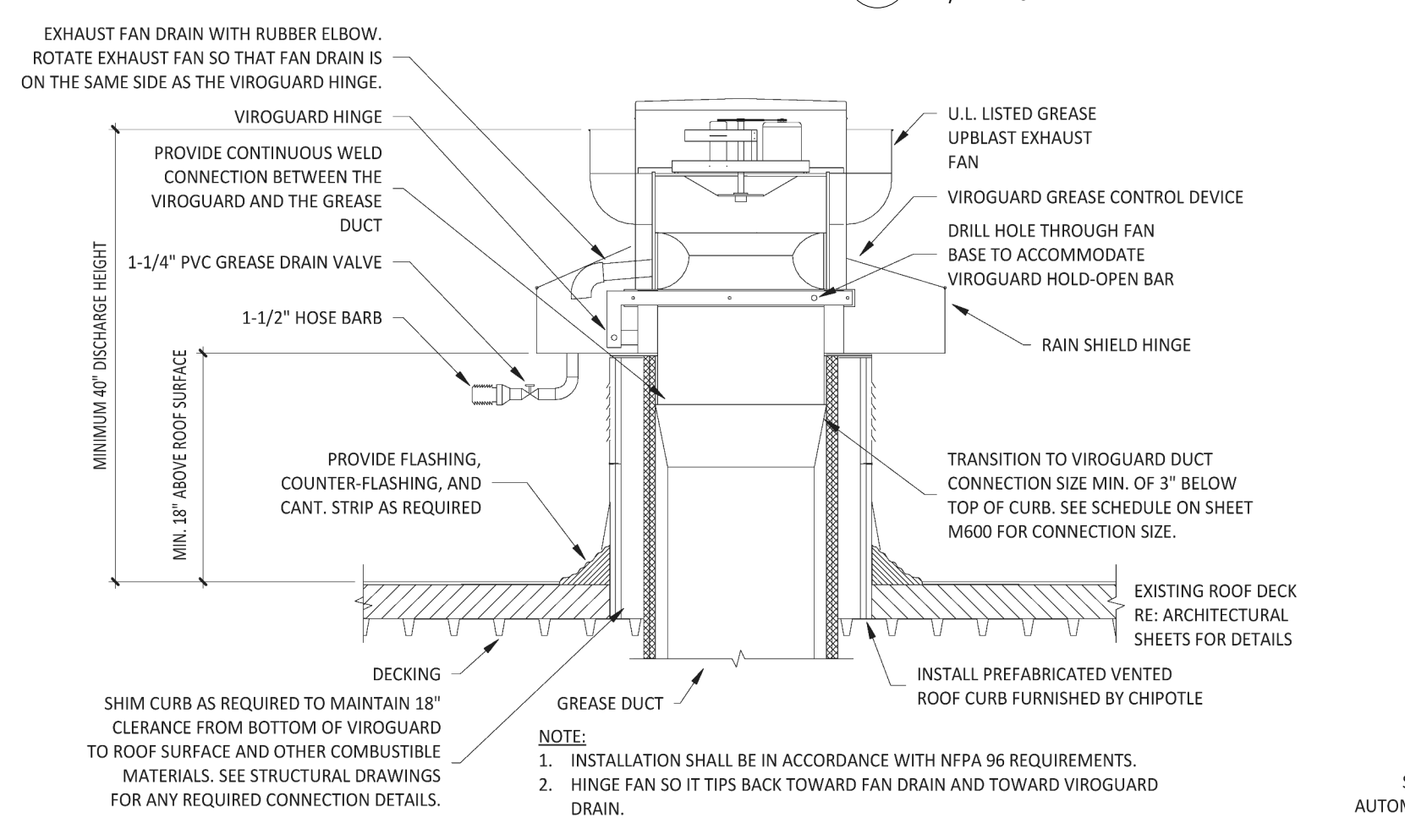
7 DUCT SECTION AT HOOD
1/4" = 1'-0"

8 HOOD SECTION
1/4" = 1'-0"

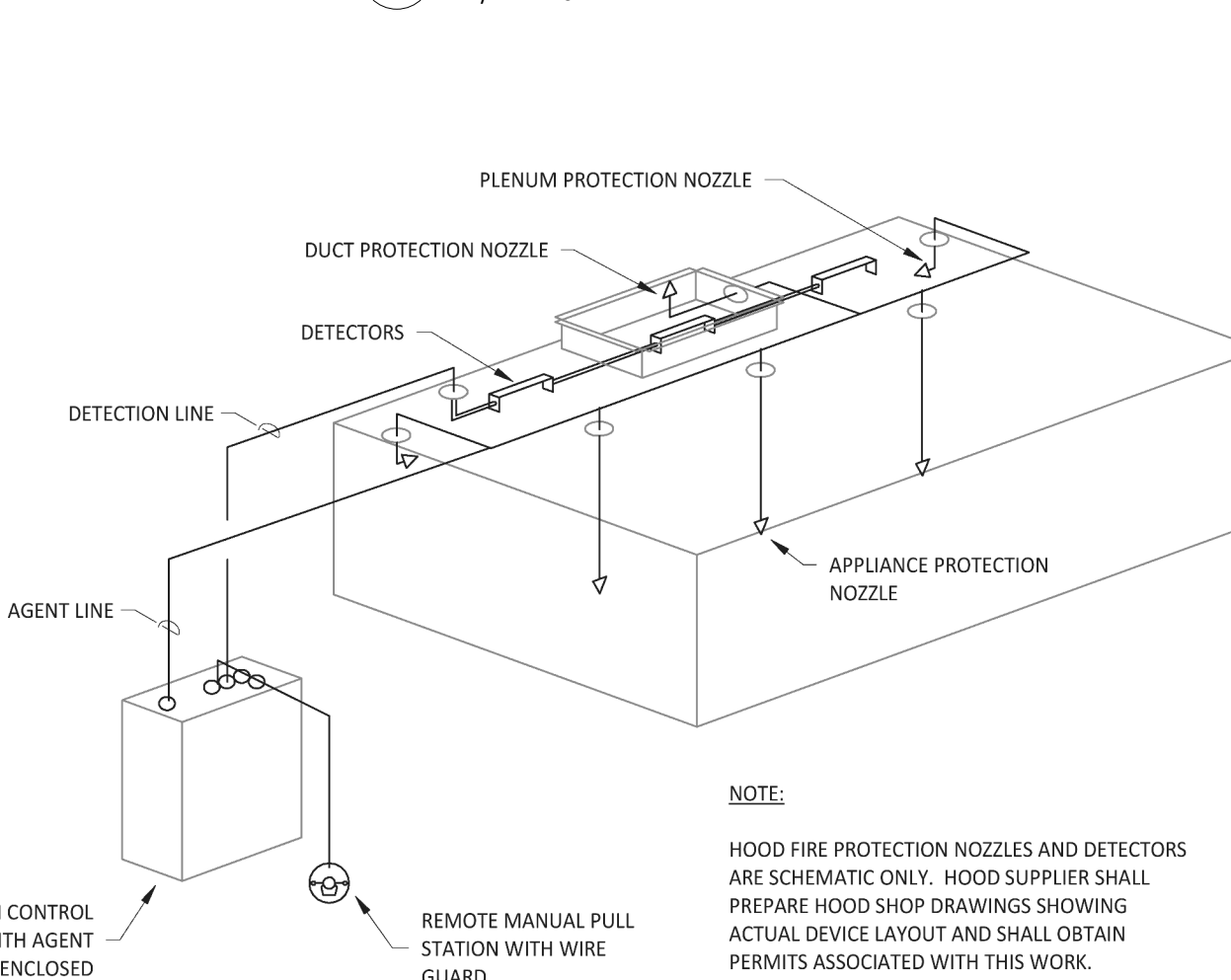


INSTALLATION LOCATION
INSTALL AIR PURIFIER WITH JUNCTION BOX ON OUTSIDE FACE OF ROOFTOP UNIT AND WITH UV LAMP TUBE EXTENDING INTO THE INTERIOR OF THE ROOFTOP UNIT. FIELD VERIFY EXACT LOCATION TO AVOID DAMAGING, TOUCHING, OR INTERFERING WITH ANY RTU INTERIOR COMPONENTS. INSTALLATION LOCATION SHALL BE AS FOLLOWS:
TRANE: INSTALL INTO THE SUPPLY AIR STREAM THROUGH THE REMOVABLE PANEL COVERING THE HORIZONTAL DISCHARGE SUPPLY AIR OPENING.
YORK: INSTALL INTO THE SUPPLY AIR PLENUM FROM THE BACK SIDE OF THE UNIT JUST ABOVE THE HEAT EXCHANGER.

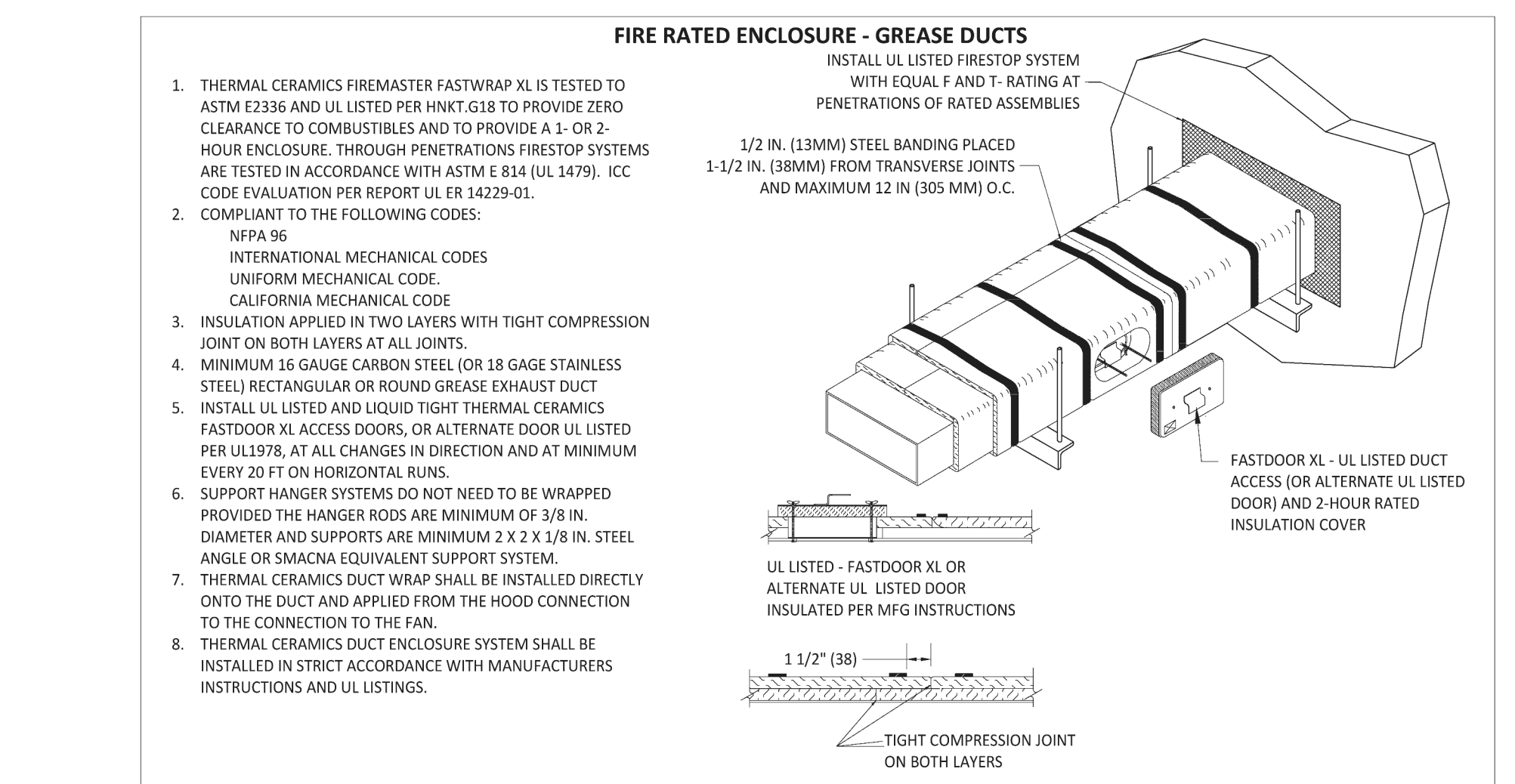
6 UV AIR PURIFIER INSTALLATION
NOT TO SCALE



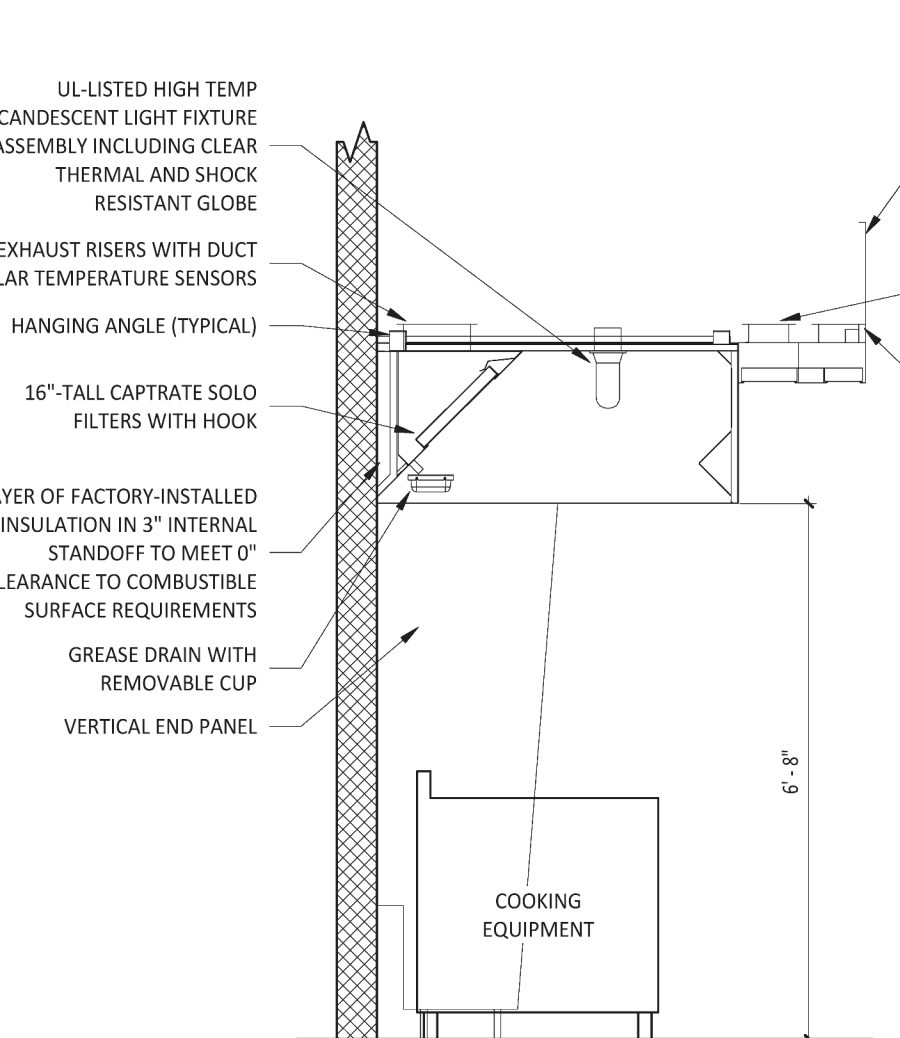
5 GREASE EXHAUST FAN
NOT TO SCALE



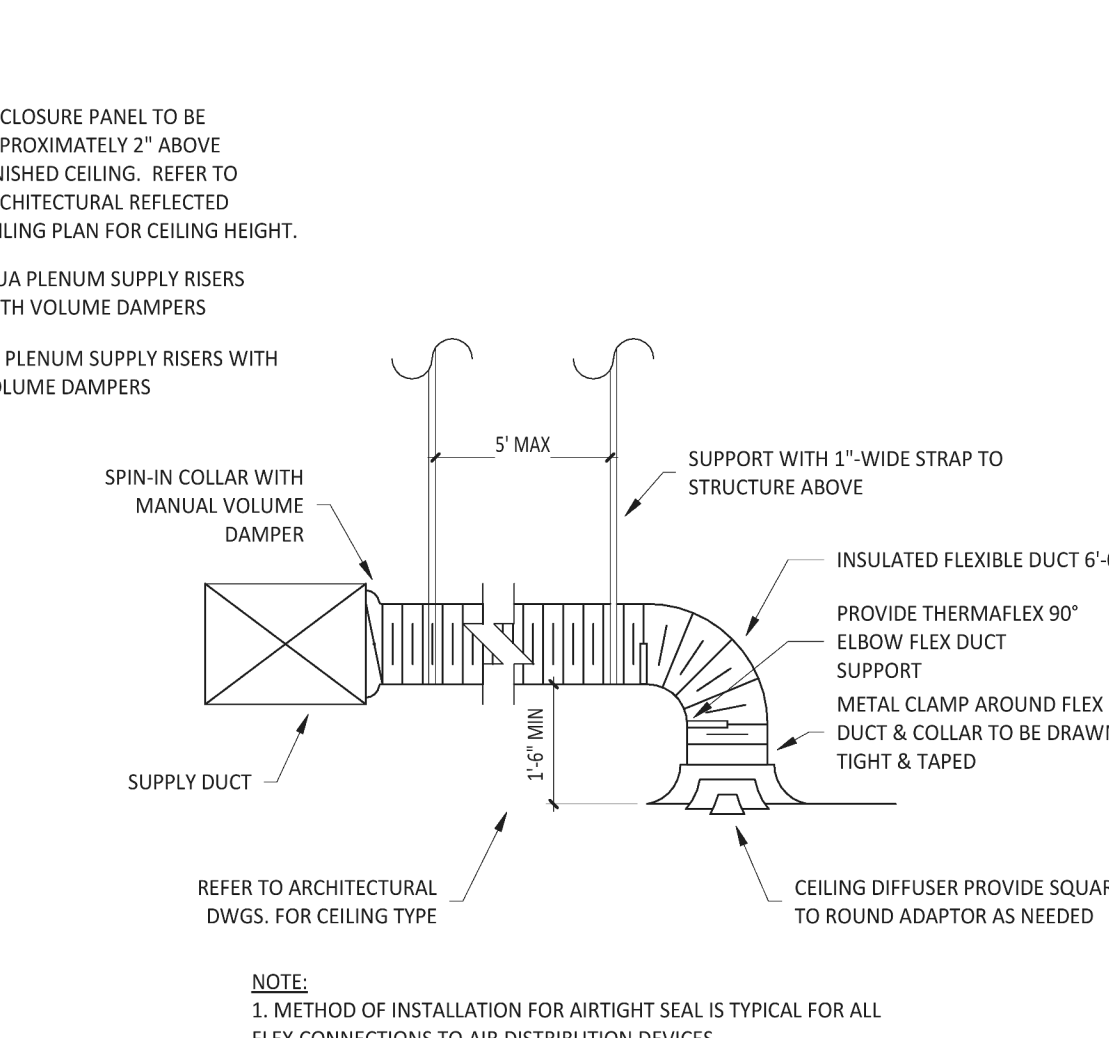
4 FIRE SUPPRESSION SYSTEM SCHEMATIC
NOT TO SCALE



3 FIREMASTER DUCT WRAP - UL HNKT-G18
NOT TO SCALE



2 HOOD SECTION VIEW
NOT TO SCALE



1 DIFFUSER CONNECTION
NOT TO SCALE