

HOOD INFORMATION - Job#3789035

HOOD NO.	TAG	MODEL	LENGTH	MAX. COOKING TEMP.	EXHAUST PLENUM					TOTAL SUPPLY CFM	HOOD CONSTRUCTION	HOOD CONFIG.				
					TOTAL EXH. CFM	WIDTH	LENG.	HEIGHT	DIA.			CFM	VEL.	S.P.	END TO END	ROW
1	HD1-Grill	3650 BD-2	7' 0"	600 Deg.	1250	11"	11"	4"		1250	1488	-0.706"	0	430 SS Where Exposed	ALONE	ALONE
2	HD1-PSP	246 MISC ACPSP-ONLY	7' 0"	300 Deg.	0								1000	430 SS Where Exposed	ALONE	ALONE
3	HD #2	4412 Quizno	1' 9.25"	300 Deg.	600	8"	8"	4"		600	1800	-0.376"	0	430 SS 100%	ALONE	ALONE
4	HD3-Fry	3650 BD-2	4' 2"	600 Deg.	850	8"	8"	4"		850	1631	-0.616"	0	430 SS Where Exposed	ALONE	ALONE
5	HD3-PSP	246 MISC ACPSP-ONLY	4' 2"	300 Deg.	0								630	430 SS Where Exposed	ALONE	ALONE

FOR QUESTIONS, CALL THE CAPTIVE-AIRE (TRI-STATE) OFFICE
1329 E. KEMPER RD. SUITE 4210
PHONE: (513) 860-5555
joe.hertenstein@captiveaire.com

HOOD INFORMATION

HOOD NO.	TAG	TYPE	FILTER(S)		LIGHT(S)		UTILITY CABINET(S)				FIRE SYSTEM PIPING	HOOD HANGING WGT		
			QTY.	HEIGHT	LENGTH	EFFICIENCY @ 7 MICRONS	QTY.	TYPE	WIRE GUARD	LOCATION			SIZE	TYPE
1	HD1-Grill	Captrate Solo Filter	5	16"	16"	85% See Filter Spec.	3	L55 Series E26	NO				277 LBS	
2	HD1-PSP						0						115 LBS	
3	HD #2	SS Baffle w/ Handles	2	10"	20"	30%	0						222 LBS	
4	HD3-Fry	Captrate Solo Filter	3	16"	16"	85% See Filter Spec.	2	L55 Series E26	NO	Wall Mnt	12"x60"x24"	Tank Fire 4/4/4	SC-E013022MA 2 Light 2 Fan	225 LBS
5	HD3-PSP						0						74 LBS	

HOOD OPTIONS

HOOD NO.	TAG	OPTION
1	HD1-Grill	FIELD WRAPPER 14.50" High Front, Left, Right RIGHT QUARTER END PANEL 26" Top Width, 0" Bottom Width, 26" High 430 SS LEFT QUARTER END PANEL 26" Top Width, 0" Bottom Width, 26" High 430 SS SENSOR-CV
3	HD #2	SENSOR-CV
4	HD3-Fry	FIELD WRAPPER 14.50" High Front, Left, Right BACKSPLASH 96.00" High X 448.00" Long 430 SS Vertical BACKSPLASH 48.00" High X 96.00" Long 430 SS Horizontal BACKSPLASH - INSIDE CORNER 96.00" High X 2.00" Leg Length 430 SS Vertical LEFT QUARTER END PANEL 26" Top Width, 0" Bottom Width, 26" High 430 SS RIGHT VERTICAL END PANEL 26" Top Width, 26" Bottom Width, 61" High Insulated 430 SS SENSOR-CV
6	Misc Items	OPTIONS ONLY: FIELD WRAPPER 40.00" High x 17.00" Long Back 430 SS OPTIONS ONLY: FIELD WRAPPER 40.00" High x 17.00" Long Right 430 SS OPTIONS ONLY: FIELD WRAPPER 40.00" High x 17.00" Long Left 430 SS OPTIONS ONLY: WRAPPER CHANNEL - 14.00" Long OPTIONS ONLY: WRAPPER CHANNEL - 14.00" Long OPTIONS ONLY: WRAPPER CHANNEL - 14.00" Long OPTIONS ONLY: WRAPPER CHANNEL - 14.00" Long

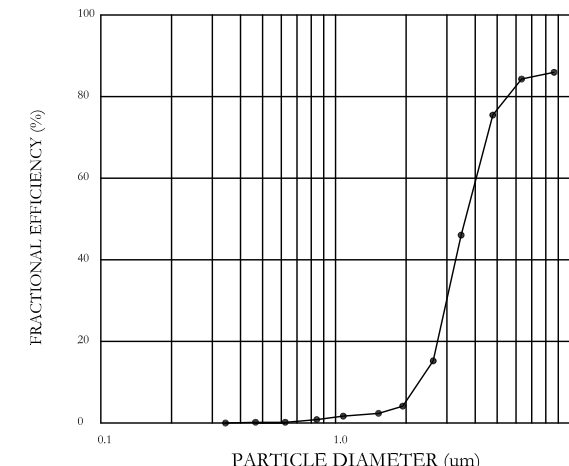
SPECIFICATION: CAPTRATE GREASE-STOP SOLO FILTER

THE CAPTRATE GREASE-STOP SOLO FILTER IS A SINGLE-STAGE FILTER FEATURING A UNIQUE S-BAFFLE DESIGN IN CONJUNCTION WITH A SLOTTED REAR BAFFLE DESIGN, TO DELIVER EXCEPTIONAL FILTRATION EFFICIENCY. FILTER IS STAINLESS STEEL CONSTRUCTION, AND SIZED TO FIT INTO STANDARD 2-INCH DEEP HOOD CHANNEL(S). UNITS SHALL INCLUDE STAINLESS STEEL HANDLES AND A FASTENING DEVICE TO SECURE THE TWO COMPONENTS WHEN ASSEMBLED.

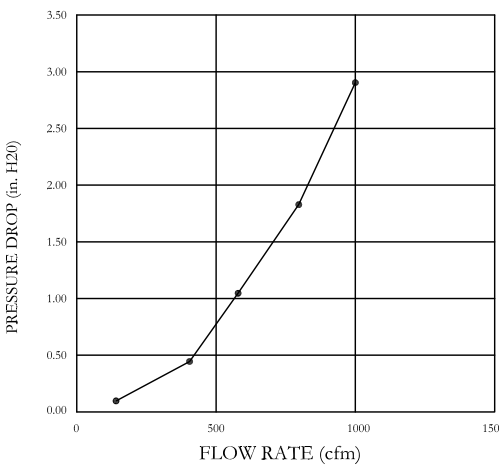
GREASE EXTRACTION EFFICIENCY PERFORMANCE SHALL REMOVE AT LEAST 75% OF GREASE PARTICLES FIVE MICRONS IN SIZE, AND 85% GREASE PARTICLES SEVEN MICRONS IN SIZE AND LARGER, WITH A CORRESPONDING PRESSURE DROP NOT TO EXCEED 1.0 INCHES OF WATER GAUGE.

THE CAPTRATE GREASE-STOP SOLO WAS TESTED TO ASTM STANDARD ASTM F2519-05.

EFFICIENCY VS. PARTICLE DIAMETER



PRESSURE DROP VS. FLOW RATE



CAPTRATE FILTERS ARE BUILT IN COMPLIANCE WITH:

- NFPA #99
- NSF STANDARD #2
- UL STANDARD #1046
- INT. MECH. CODE (IMC)
- ULC-5649



ELECTRIC GAS VALVE ONLY

IF ANY ROOM TEMP. SENSOR IS TO BE MOUNTED WITH THE SOLIDNO GAS VALVE, THE VALVE MUST BE MOUNTED WITH THE SOLIDNO GAS VALVE.

ALL GAS VALVES/STRAINERS PROPER CLEARANCE MUST BE PROVIDED IN ORDER TO SERVICE THE STRAINER. A MINIMUM OF 2" CLEARANCE MUST BE PROVIDED AT THE REAR OF THE STRAINER. CLEARANCE MUST BE PROVIDED AT THE REAR OF THE STRAINER. CLEARANCE MUST BE PROVIDED AT THE REAR OF THE STRAINER.

TO CALCULATE GAS FLOW FOR OTHER THAN 1/2" BULK PRESSURE DROP NEW FLOW - 0.010 IN. H₂O (SEE PRESSURE DROP VS. FLOW RATE GRAPH) NEW FLOW = 0.010 IN. H₂O (SEE PRESSURE DROP VS. FLOW RATE GRAPH) NEW FLOW = 0.010 IN. H₂O (SEE PRESSURE DROP VS. FLOW RATE GRAPH)

TO CALCULATE GAS FLOW FOR OTHER THAN 1/2" BULK PRESSURE DROP NEW FLOW - 0.010 IN. H₂O (SEE PRESSURE DROP VS. FLOW RATE GRAPH) NEW FLOW = 0.010 IN. H₂O (SEE PRESSURE DROP VS. FLOW RATE GRAPH) NEW FLOW = 0.010 IN. H₂O (SEE PRESSURE DROP VS. FLOW RATE GRAPH)

TO CALCULATE GAS FLOW FOR OTHER THAN 1/2" BULK PRESSURE DROP NEW FLOW - 0.010 IN. H₂O (SEE PRESSURE DROP VS. FLOW RATE GRAPH) NEW FLOW = 0.010 IN. H₂O (SEE PRESSURE DROP VS. FLOW RATE GRAPH) NEW FLOW = 0.010 IN. H₂O (SEE PRESSURE DROP VS. FLOW RATE GRAPH)

TO CALCULATE GAS FLOW FOR OTHER THAN 1/2" BULK PRESSURE DROP NEW FLOW - 0.010 IN. H₂O (SEE PRESSURE DROP VS. FLOW RATE GRAPH) NEW FLOW = 0.010 IN. H₂O (SEE PRESSURE DROP VS. FLOW RATE GRAPH) NEW FLOW = 0.010 IN. H₂O (SEE PRESSURE DROP VS. FLOW RATE GRAPH)

TO CALCULATE GAS FLOW FOR OTHER THAN 1/2" BULK PRESSURE DROP NEW FLOW - 0.010 IN. H₂O (SEE PRESSURE DROP VS. FLOW RATE GRAPH) NEW FLOW = 0.010 IN. H₂O (SEE PRESSURE DROP VS. FLOW RATE GRAPH) NEW FLOW = 0.010 IN. H₂O (SEE PRESSURE DROP VS. FLOW RATE GRAPH)

TO CALCULATE GAS FLOW FOR OTHER THAN 1/2" BULK PRESSURE DROP NEW FLOW - 0.010 IN. H₂O (SEE PRESSURE DROP VS. FLOW RATE GRAPH) NEW FLOW = 0.010 IN. H₂O (SEE PRESSURE DROP VS. FLOW RATE GRAPH) NEW FLOW = 0.010 IN. H₂O (SEE PRESSURE DROP VS. FLOW RATE GRAPH)

TO CALCULATE GAS FLOW FOR OTHER THAN 1/2" BULK PRESSURE DROP NEW FLOW - 0.010 IN. H₂O (SEE PRESSURE DROP VS. FLOW RATE GRAPH) NEW FLOW = 0.010 IN. H₂O (SEE PRESSURE DROP VS. FLOW RATE GRAPH) NEW FLOW = 0.010 IN. H₂O (SEE PRESSURE DROP VS. FLOW RATE GRAPH)

TO CALCULATE GAS FLOW FOR OTHER THAN 1/2" BULK PRESSURE DROP NEW FLOW - 0.010 IN. H₂O (SEE PRESSURE DROP VS. FLOW RATE GRAPH) NEW FLOW = 0.010 IN. H₂O (SEE PRESSURE DROP VS. FLOW RATE GRAPH) NEW FLOW = 0.010 IN. H₂O (SEE PRESSURE DROP VS. FLOW RATE GRAPH)

TO CALCULATE GAS FLOW FOR OTHER THAN 1/2" BULK PRESSURE DROP NEW FLOW - 0.010 IN. H₂O (SEE PRESSURE DROP VS. FLOW RATE GRAPH) NEW FLOW = 0.010 IN. H₂O (SEE PRESSURE DROP VS. FLOW RATE GRAPH) NEW FLOW = 0.010 IN. H₂O (SEE PRESSURE DROP VS. FLOW RATE GRAPH)

TO CALCULATE GAS FLOW FOR OTHER THAN 1/2" BULK PRESSURE DROP NEW FLOW - 0.010 IN. H₂O (SEE PRESSURE DROP VS. FLOW RATE GRAPH) NEW FLOW = 0.010 IN. H₂O (SEE PRESSURE DROP VS. FLOW RATE GRAPH) NEW FLOW = 0.010 IN. H₂O (SEE PRESSURE DROP VS. FLOW RATE GRAPH)

TO CALCULATE GAS FLOW FOR OTHER THAN 1/2" BULK PRESSURE DROP NEW FLOW - 0.010 IN. H₂O (SEE PRESSURE DROP VS. FLOW RATE GRAPH) NEW FLOW = 0.010 IN. H₂O (SEE PRESSURE DROP VS. FLOW RATE GRAPH) NEW FLOW = 0.010 IN. H₂O (SEE PRESSURE DROP VS. FLOW RATE GRAPH)

TO CALCULATE GAS FLOW FOR OTHER THAN 1/2" BULK PRESSURE DROP NEW FLOW - 0.010 IN. H₂O (SEE PRESSURE DROP VS. FLOW RATE GRAPH) NEW FLOW = 0.010 IN. H₂O (SEE PRESSURE DROP VS. FLOW RATE GRAPH) NEW FLOW = 0.010 IN. H₂O (SEE PRESSURE DROP VS. FLOW RATE GRAPH)

TO CALCULATE GAS FLOW FOR OTHER THAN 1/2" BULK PRESSURE DROP NEW FLOW - 0.010 IN. H₂O (SEE PRESSURE DROP VS. FLOW RATE GRAPH) NEW FLOW = 0.010 IN. H₂O (SEE PRESSURE DROP VS. FLOW RATE GRAPH) NEW FLOW = 0.010 IN. H₂O (SEE PRESSURE DROP VS. FLOW RATE GRAPH)

TO CALCULATE GAS FLOW FOR OTHER THAN 1/2" BULK PRESSURE DROP NEW FLOW - 0.010 IN. H₂O (SEE PRESSURE DROP VS. FLOW RATE GRAPH) NEW FLOW = 0.010 IN. H₂O (SEE PRESSURE DROP VS. FLOW RATE GRAPH) NEW FLOW = 0.010 IN. H₂O (SEE PRESSURE DROP VS. FLOW RATE GRAPH)

TO CALCULATE GAS FLOW FOR OTHER THAN 1/2" BULK PRESSURE DROP NEW FLOW - 0.010 IN. H₂O (SEE PRESSURE DROP VS. FLOW RATE GRAPH) NEW FLOW = 0.010 IN. H₂O (SEE PRESSURE DROP VS. FLOW RATE GRAPH) NEW FLOW = 0.010 IN. H₂O (SEE PRESSURE DROP VS. FLOW RATE GRAPH)

TO CALCULATE GAS FLOW FOR OTHER THAN 1/2" BULK PRESSURE DROP NEW FLOW - 0.010 IN. H₂O (SEE PRESSURE DROP VS. FLOW RATE GRAPH) NEW FLOW = 0.010 IN. H₂O (SEE PRESSURE DROP VS. FLOW RATE GRAPH) NEW FLOW = 0.010 IN. H₂O (SEE PRESSURE DROP VS. FLOW RATE GRAPH)

TO CALCULATE GAS FLOW FOR OTHER THAN 1/2" BULK PRESSURE DROP NEW FLOW - 0.010 IN. H₂O (SEE PRESSURE DROP VS. FLOW RATE GRAPH) NEW FLOW = 0.010 IN. H₂O (SEE PRESSURE DROP VS. FLOW RATE GRAPH) NEW FLOW = 0.010 IN. H₂O (SEE PRESSURE DROP VS. FLOW RATE GRAPH)

TO CALCULATE GAS FLOW FOR OTHER THAN 1/2" BULK PRESSURE DROP NEW FLOW - 0.010 IN. H₂O (SEE PRESSURE DROP VS. FLOW RATE GRAPH) NEW FLOW = 0.010 IN. H₂O (SEE PRESSURE DROP VS. FLOW RATE GRAPH) NEW FLOW = 0.010 IN. H₂O (SEE PRESSURE DROP VS. FLOW RATE GRAPH)

TO CALCULATE GAS FLOW FOR OTHER THAN 1/2" BULK PRESSURE DROP NEW FLOW - 0.010 IN. H₂O (SEE PRESSURE DROP VS. FLOW RATE GRAPH) NEW FLOW = 0.010 IN. H₂O (SEE PRESSURE DROP VS. FLOW RATE GRAPH) NEW FLOW = 0.010 IN. H₂O (SEE PRESSURE DROP VS. FLOW RATE GRAPH)

TO CALCULATE GAS FLOW FOR OTHER THAN 1/2" BULK PRESSURE DROP NEW FLOW - 0.010 IN. H₂O (SEE PRESSURE DROP VS. FLOW RATE GRAPH) NEW FLOW = 0.010 IN. H₂O (SEE PRESSURE DROP VS. FLOW RATE GRAPH) NEW FLOW = 0.010 IN. H₂O (SEE PRESSURE DROP VS. FLOW RATE GRAPH)

TO CALCULATE GAS FLOW FOR OTHER THAN 1/2" BULK PRESSURE DROP NEW FLOW - 0.010 IN. H₂O (SEE PRESSURE DROP VS. FLOW RATE GRAPH) NEW FLOW = 0.010 IN. H₂O (SEE PRESSURE DROP VS. FLOW RATE GRAPH) NEW FLOW = 0.010 IN. H₂O (SEE PRESSURE DROP VS. FLOW RATE GRAPH)

TO CALCULATE GAS FLOW FOR OTHER THAN 1/2" BULK PRESSURE DROP NEW FLOW - 0.010 IN. H₂O (SEE PRESSURE DROP VS. FLOW RATE GRAPH) NEW FLOW = 0.010 IN. H₂O (SEE PRESSURE DROP VS. FLOW RATE GRAPH) NEW FLOW = 0.010 IN. H₂O (SEE PRESSURE DROP VS. FLOW RATE GRAPH)

TO CALCULATE GAS FLOW FOR OTHER THAN 1/2" BULK PRESSURE DROP NEW FLOW - 0.010 IN. H₂O (SEE PRESSURE DROP VS. FLOW RATE GRAPH) NEW FLOW = 0.010 IN. H₂O (SEE PRESSURE DROP VS. FLOW RATE GRAPH) NEW FLOW = 0.010 IN. H₂O (SEE PRESSURE DROP VS. FLOW RATE GRAPH)

TO CALCULATE GAS FLOW FOR OTHER THAN 1/2" BULK PRESSURE DROP NEW FLOW - 0.010 IN. H₂O (SEE PRESSURE DROP VS. FLOW RATE GRAPH) NEW FLOW = 0.010 IN. H₂O (SEE PRESSURE DROP VS. FLOW RATE GRAPH) NEW FLOW = 0.010 IN. H₂O (SEE PRESSURE DROP VS. FLOW RATE GRAPH)

TO CALCULATE GAS FLOW FOR OTHER THAN 1/2" BULK PRESSURE DROP NEW FLOW - 0.010 IN. H₂O (SEE PRESSURE DROP VS. FLOW RATE GRAPH) NEW FLOW = 0.010 IN. H₂O (SEE PRESSURE DROP VS. FLOW RATE GRAPH) NEW FLOW = 0.010 IN. H₂O (SEE PRESSURE DROP VS. FLOW RATE GRAPH)

TO CALCULATE GAS FLOW FOR OTHER THAN 1/2" BULK PRESSURE DROP NEW FLOW - 0.010 IN. H₂O (SEE PRESSURE DROP VS. FLOW RATE GRAPH) NEW FLOW = 0.010 IN. H₂O (SEE PRESSURE DROP VS. FLOW RATE GRAPH) NEW FLOW = 0.010 IN. H₂O (SEE PRESSURE DROP VS. FLOW RATE GRAPH)

TO CALCULATE GAS FLOW FOR OTHER THAN 1/2" BULK PRESSURE DROP NEW FLOW - 0.010 IN. H₂O (SEE PRESSURE DROP VS. FLOW RATE GRAPH) NEW FLOW = 0.010 IN. H₂O (SEE PRESSURE DROP VS. FLOW RATE GRAPH) NEW FLOW = 0.010 IN. H₂O (SEE PRESSURE DROP VS. FLOW RATE GRAPH)

TO CALCULATE GAS FLOW FOR OTHER THAN 1/2" BULK PRESSURE DROP NEW FLOW - 0.010 IN. H₂O (SEE PRESSURE DROP VS. FLOW RATE GRAPH) NEW FLOW = 0.010 IN. H₂O (SEE PRESSURE DROP VS. FLOW RATE GRAPH) NEW FLOW = 0.010 IN. H₂O (SEE PRESSURE DROP VS. FLOW RATE GRAPH)

TO CALCULATE GAS FLOW FOR OTHER THAN 1/2" BULK PRESSURE DROP NEW FLOW - 0.010 IN. H₂O (SEE PRESSURE DROP VS. FLOW RATE GRAPH) NEW FLOW = 0.010 IN. H₂O (SEE PRESSURE DROP VS. FLOW RATE GRAPH) NEW FLOW = 0.010 IN. H₂O (SEE PRESSURE DROP VS. FLOW RATE GRAPH)

TO CALCULATE GAS FLOW FOR OTHER THAN 1/2" BULK PRESSURE DROP NEW FLOW - 0.010 IN. H₂O (SEE PRESSURE DROP VS. FLOW RATE GRAPH) NEW FLOW = 0.010 IN. H₂O (SEE PRESSURE DROP VS. FLOW RATE GRAPH) NEW FLOW = 0.010 IN. H₂O (SEE PRESSURE DROP VS. FLOW RATE GRAPH)

TO CALCULATE GAS FLOW FOR OTHER THAN 1/2" BULK PRESSURE DROP NEW FLOW - 0.010 IN. H₂O (SEE PRESSURE DROP VS. FLOW RATE GRAPH) NEW FLOW = 0.010 IN. H₂O (SEE PRESSURE DROP VS. FLOW RATE GRAPH) NEW FLOW = 0.010 IN. H₂O (SEE PRESSURE DROP VS. FLOW RATE GRAPH)

TO CALCULATE GAS FLOW FOR OTHER THAN 1/2" BULK PRESSURE DROP NEW FLOW - 0.010 IN. H₂O (SEE PRESSURE DROP VS. FLOW RATE GRAPH) NEW FLOW = 0.010 IN. H₂O (SEE PRESSURE DROP VS. FLOW RATE GRAPH) NEW FLOW = 0.010 IN. H₂O (SEE PRESSURE DROP VS. FLOW RATE GRAPH)

TO CALCULATE GAS FLOW FOR OTHER THAN 1/2" BULK PRESSURE DROP NEW FLOW - 0.010 IN. H₂O (SEE PRESSURE DROP VS. FLOW RATE GRAPH) NEW FLOW = 0.010 IN. H₂O (SEE PRESSURE DROP VS. FLOW RATE GRAPH) NEW FLOW = 0.010 IN. H₂O (SEE PRESSURE DROP VS. FLOW RATE GRAPH)

TO CALCULATE GAS FLOW FOR OTHER THAN 1/2" BULK PRESSURE DROP NEW FLOW - 0.010 IN. H₂O (SEE PRESSURE DROP VS. FLOW RATE GRAPH) NEW FLOW = 0.010 IN. H₂O (SEE PRESSURE DROP VS. FLOW RATE GRAPH) NEW FLOW = 0.010 IN. H₂O (SEE PRESSURE DROP VS. FLOW RATE GRAPH)

TO CALCULATE GAS FLOW FOR OTHER THAN 1/2" BULK PRESSURE DROP NEW FLOW - 0.010 IN. H₂O (SEE PRESSURE DROP VS. FLOW RATE GRAPH) NEW FLOW = 0.010 IN. H₂O (SEE PRESSURE DROP VS. FLOW RATE GRAPH) NEW FLOW = 0.010 IN. H₂O (SEE PRESSURE DROP VS. FLOW RATE GRAPH)

TO CALCULATE GAS FLOW FOR OTHER THAN 1/2" BULK PRESSURE DROP NEW FLOW - 0.010 IN. H₂O (SEE PRESSURE DROP VS. FLOW RATE GRAPH) NEW FLOW = 0.010 IN. H₂O (SEE PRESSURE DROP VS. FLOW RATE GRAPH) NEW FLOW = 0.010 IN. H₂O (SEE PRESSURE DROP VS. FLOW RATE GRAPH)

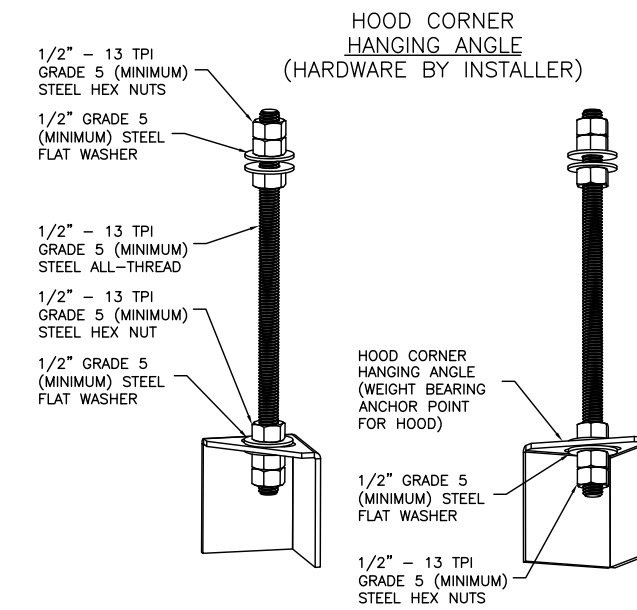
TO CALCULATE GAS FLOW FOR OTHER THAN 1/2" BULK PRESSURE DROP NEW FLOW - 0.010 IN. H₂O (SEE PRESSURE DROP VS. FLOW RATE GRAPH) NEW FLOW = 0.010 IN. H₂O (SEE PRESSURE DROP VS. FLOW RATE GRAPH) NEW FLOW = 0.010 IN. H₂O (SEE PRESSURE DROP VS. FLOW RATE GRAPH)

TO CALCULATE GAS FLOW FOR OTHER THAN 1/2" BULK PRESSURE DROP NEW FLOW - 0.010 IN. H₂O (SEE PRESSURE DROP VS. FLOW RATE GRAPH) NEW FLOW = 0.010 IN. H₂O (SEE PRESSURE DROP VS. FLOW RATE GRAPH) NEW FLOW = 0.010 IN. H₂O (SEE PRESSURE DROP VS. FLOW RATE GRAPH)

TO CALCULATE GAS FLOW FOR OTHER THAN 1/2" BULK PRESSURE DROP NEW FLOW - 0.010 IN. H₂O (SEE PRESSURE DROP VS. FLOW RATE GRAPH) NEW FLOW = 0.010 IN. H₂O (SEE PRESSURE DROP VS. FLOW RATE GRAPH) NEW FLOW = 0.010 IN. H₂O (SEE PRESSURE DROP VS. FLOW RATE GRAPH)

TO CALCULATE GAS FLOW FOR OTHER THAN 1/2" BULK PRESSURE DROP NEW FLOW - 0.010 IN. H₂O (SEE PRESSURE DROP VS. FLOW RATE GRAPH) NEW FLOW = 0.010 IN. H₂O (SEE PRESSURE DROP VS. FLOW RATE GRAPH) NEW FLOW = 0.010 IN. H₂O (SEE PRESSURE DROP VS. FLOW RATE GRAPH)

TO CALCULATE GAS FLOW FOR OTHER THAN 1/2" BULK PRESSURE DROP NEW FLOW - 0.010 IN. H₂O (SEE PRESSURE DROP VS. FLOW RATE GRAPH) NEW FLOW = 0.010 IN. H₂O (SEE PRESSURE DROP VS. FLOW RATE GRAPH) NEW FLOW = 0.010 IN. H₂O (SEE PRESSURE DROP VS. FLOW RATE GRAPH)



ASSEMBLY INSTRUCTIONS

HANGING ANGLE MUST BE SUPPORTED WITH 1/2" - 13 TPI GRADE 5 (MINIMUM) ALL-THREAD, SANDWICH HANGING ANGLES AND CEILING ANCHOR POINTS WITH 1/2" GRADE 5 (MINIMUM) STEEL FLAT WASHERS AND 1/2" - 13 TPI GRADE 5 (MINIMUM) HEX NUTS AS SHOWN. MUST USE DOUBLED HEX NUT CONFIGURATION BENEATH HOOD HANGING ANGLES AND ABOVE CEILING ANCHORS. MAINTAIN 1/4" OF EXPOSED THREADS BENEATH BOTTOM HEX NUT. TORQUE ALL HEX NUTS TO 57 FT-LBS.

CAPTIVE-AIRE HOODS ARE BUILT IN COMPLIANCE WITH UL 710 AND NFPA 96 AND ARE RECOGNIZED BY ONE OR MORE OF THE FOLLOWING:

ETL SANITATION LISTED
ETL LISTED FILE# 3054804-001

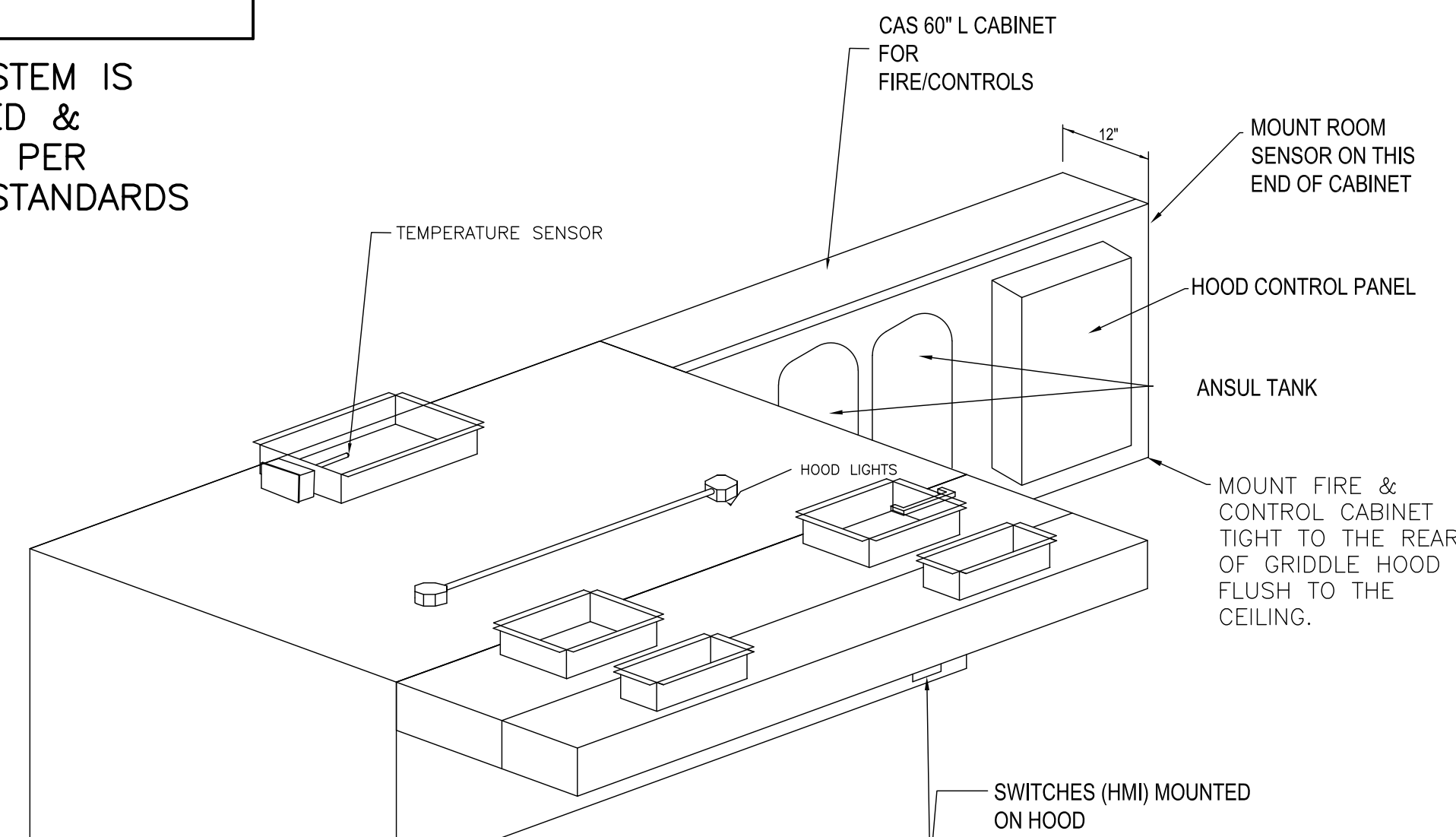
HOOD SYSTEM IS FABRICATED & DESIGNED PER UL-710 STANDARDS

CAPTIVE-AIRE HOODS ARE BUILT IN COMPLIANCE WITH UL 710 AND NFPA 96 AND ARE RECOGNIZED BY ONE OR MORE OF THE FOLLOWING:

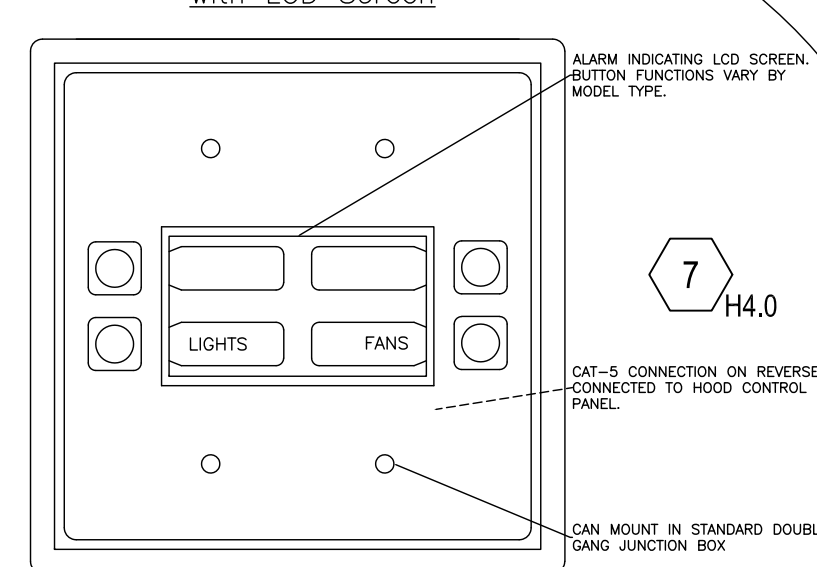
ETL SANITATION LISTED
ETL LISTED FILE# 3054804-001

GENERAL WIRING COMPONENTS ONLY (MUST READ ALL DETAILED DIRECTIONS ON THE CAPTIVE-AIRE ELECTRICAL DWG SHEET PROVIDED)

HOOD SYSTEM IS FABRICATED & DESIGNED PER UL-710 STANDARDS



HOOD CONTROL PACKAGE INTERFACE with LCD Screen



DETAIL OF HOOD MOUNTED CONTROLS INTERFACE

PERFORATED SUPPLY PLENUM(S)

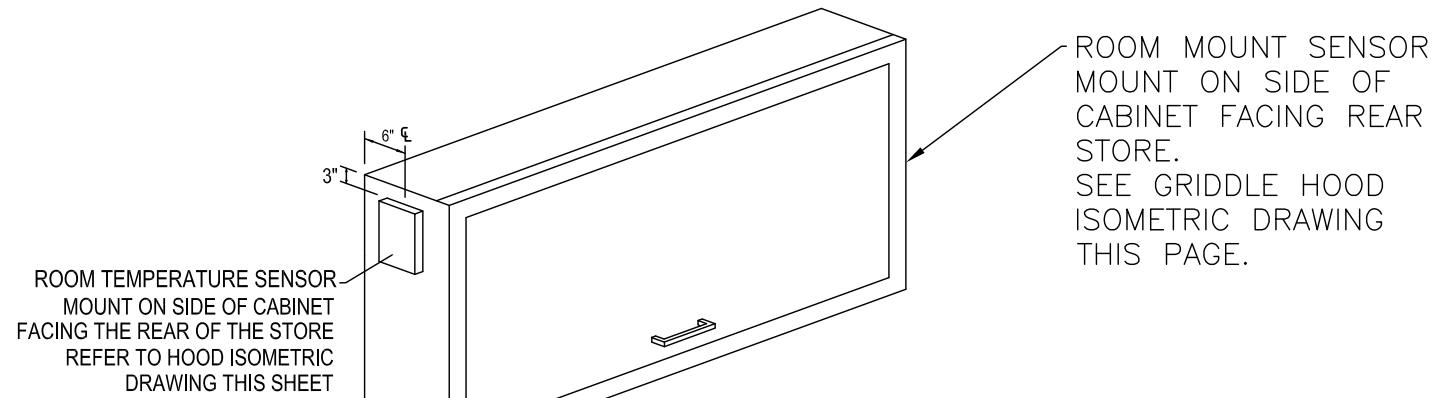
HOOD NO.	TAG	POS.	LENGTH	WIDTH	HEIGHT	TYPE	RISER(S)				
							WIDTH	LENG.	DIA.	CFM	S.P.
2	HD1-PSP	Front	84"	10"	6"	AC	8"	24"		465	0.123"
		Back	84"	14"	6"	MUA	10"	24"		572	0.178"
5	HD3-PSP	Front	50"	10"	6"	AC	8"	16"		250	0.071"
		Back	50"	14"	6"	MUA	10"	24"		630	0.213"

WALL-MOUNT UTILITY CABINET

HOOD NO.	LOCATION	SIZE	UTILITY CABINET(S)				WEIGHT
			FIRE SYSTEM	TYPE	SIZE	MODEL #	
2	WALL MNT	12"x60"x24"	TANK FS		4.0/4.0/4.0	SC-130220MA_MA4	2 LIGHT 2 FAN 440.00 LBS

GAS VALVE(S)

FIRE SYSTEM NO.	TAG	TYPE	SIZE	SUPPLIED BY
1	FS-1	Electrical	1.250	CaptiveAir Systems



UTILITY CABINET DRAWING

NOTE TEMPERATURE SENSOR LOCATIONS

ROOM MOUNT SENSOR MOUNT ON SIDE OF CABINET FACING REAR STORE. SEE GRIDDLE HOOD ISOMETRIC DRAWING THIS PAGE.

EXHAUST FAN INFORMATION - JOB#5234814

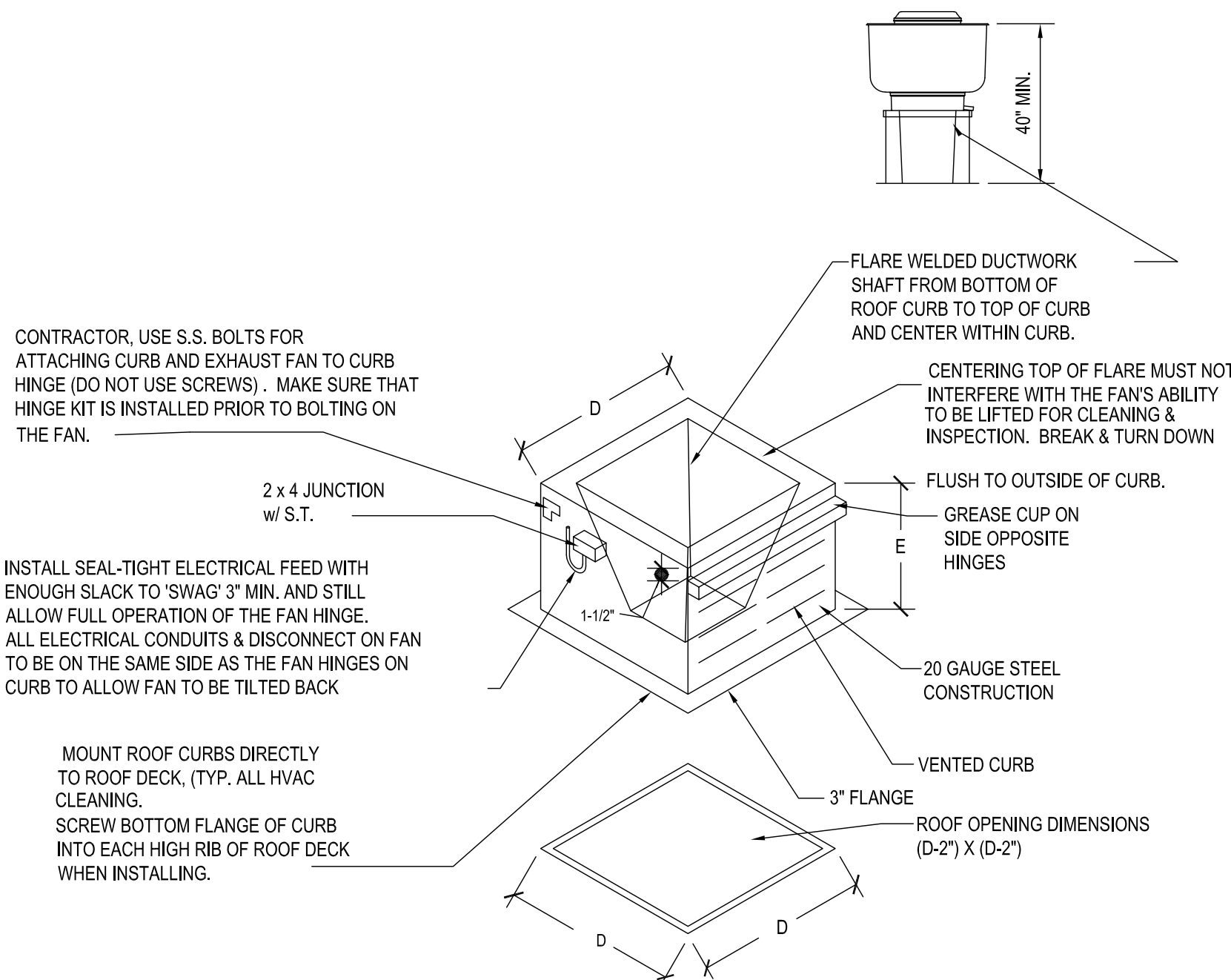
FAN UNIT NO.	TAG	QTY	FAN UNIT MODEL #	MANUFACTURER	CFM	ESP	RPM	MOTOR ENCL	HP	BHP	PHASE	VOLT	FLA	DISCHARGE VELOCITY	WEIGHT (LBS)	SONES
1	EF-1 (GRILL)	1	DUB5HFA	CAPTIVEAIRE	1250	1.150	1240	TEAO-ECM	0.750	0.3630	1	115	8.9	388 FPM	89	10.5
2	KEF2 (OVEN)	1	DU33HFA	CAPTIVEAIRE	600	0.600	1296	TEAO-ECM	0.333	0.1420	1	115	4.3	297 FPM	70	11.5
3	KEF3 (FRY)	1	DUB5HFA	CAPTIVEAIRE	850	1.200	1210	TEAO-ECM	0.750	0.3090	1	115	8.9	253 FPM	89	10.1

MUA FAN INFORMATION - Job#3789035

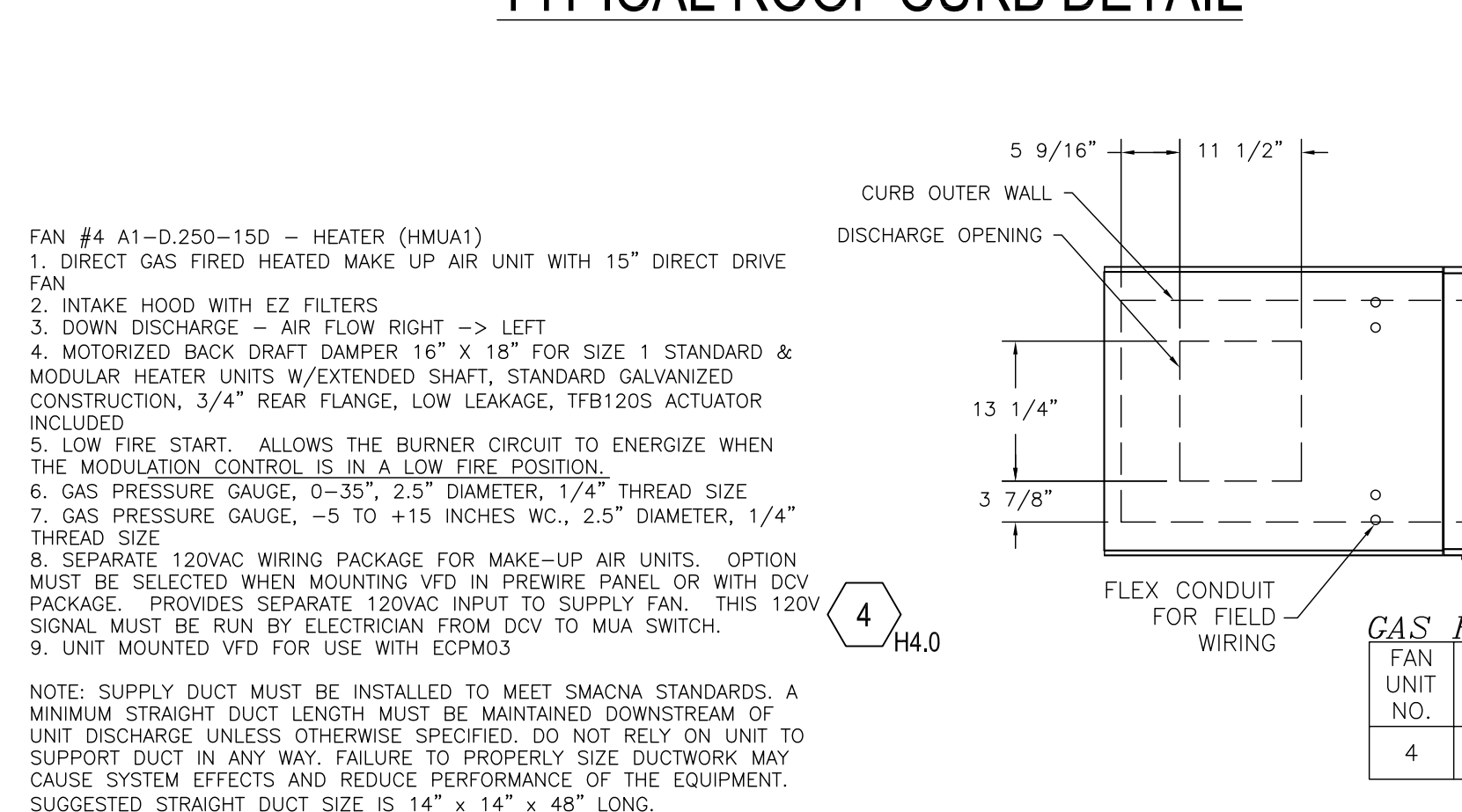
FAN UNIT NO.	TAG	FAN UNIT MODEL #	BLOWER	HOUSING	MIN CFM	DESIGN CFM	ESP	RPM	H.P.	B.H.P.	Ø	VOLT	FLA	WEIGHT (LBS.)	SONES	BURNER EFFICIENCY(%)
4	HMAU1	A1-D.250-15D	5MF-1-MOD	A1-D.250	1000	1630	0.400	1895	1.500	0.9960	3	208	4.4	648	18	92

CURB ASSEMBLIES

NO.	ON FAN	TAG	WEIGHT	ITEM	SIZE	LOCATION
1	# 1	KEF1 - GRIDDLE	44 LBS	Curb	(D) x (D) x (E)	Vented Hinged Grill Hood Curb
2	# 2	KEF2 - OVEN	38 LBS	Curb	19.500"W x 19.500"L x 30.000"H	Vented Hinged Oven Hood Curb
3	# 3	KEF3 - FRYER	38 LBS	Curb	23.000"W x 23.000"L x 30.000"H	Vented Hinged Fryer Hood Curb
4	# 4	HMAU1	63 LBS	Curb	21.000"W x 71.000"L x 16.000"H	Insulated Hood MUA Curb

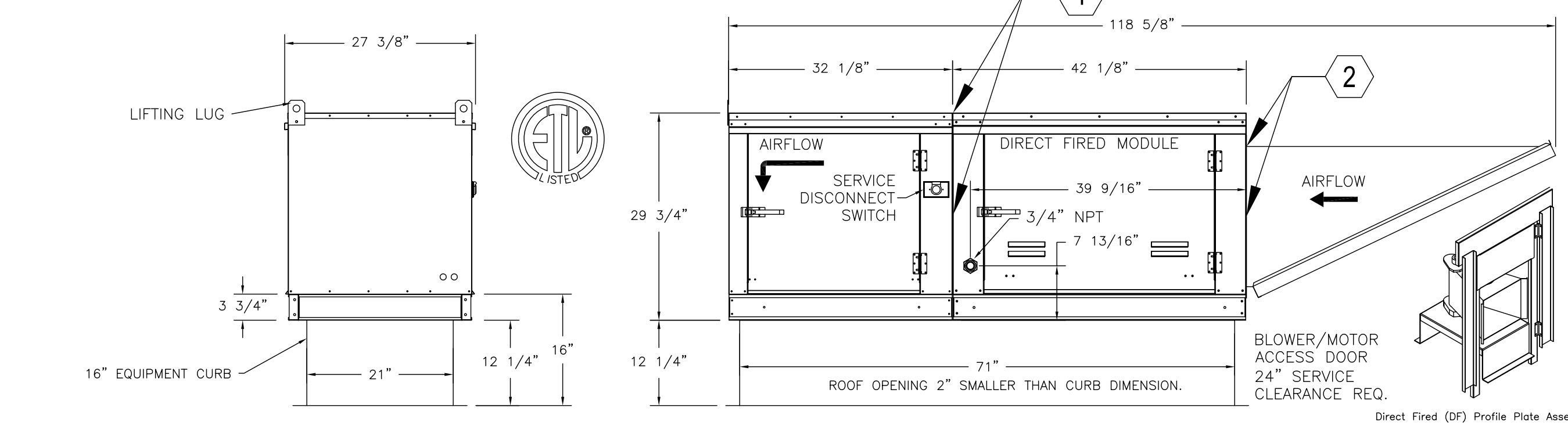


TYPICAL ROOF CURB DETAIL



GAS FIRED MAKE-UP AIR UNIT(S)

FAN UNIT NO.	TAG	INPUT BTUs	OUTPUT BTUs	TEMP. RISE	REQUIRED INPUT GAS PRESSURE	GAS TYPE
4	HMAU1	126393	116282	63 deg F	7 in. w.c. - 14 in. w.c.	Natural

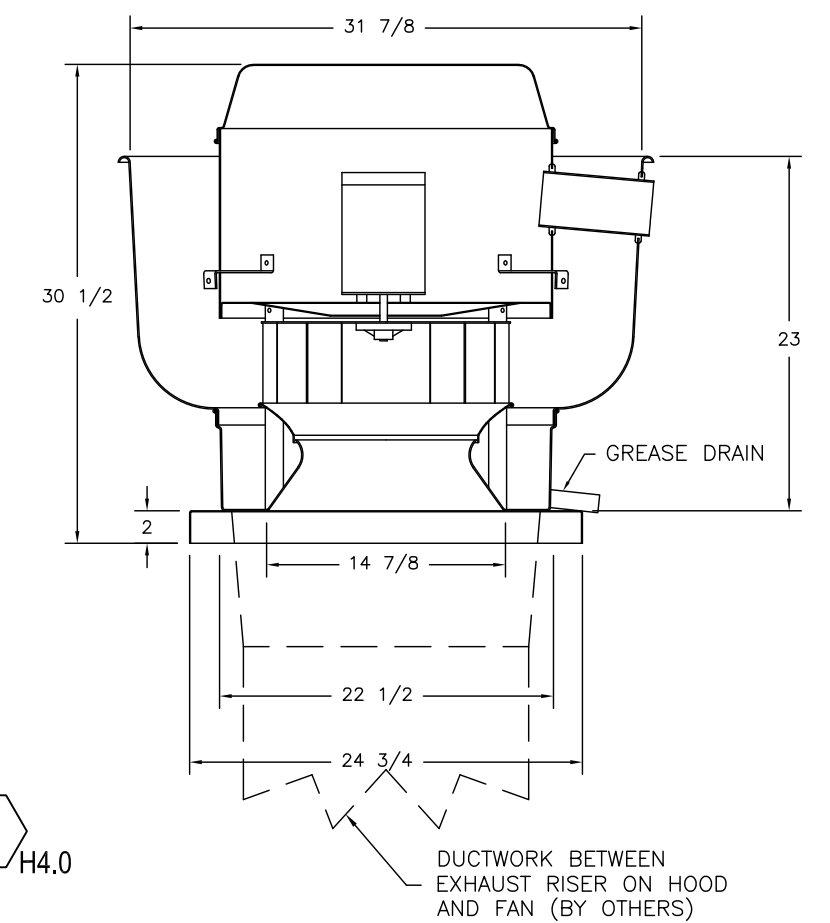


MUA NOTES:

- URETHANE CAULK HORIZ. & VERT. CONNECTIONS BETWEEN BLOWER ASSEMBLY & CONTROL MODULE.
- URETHANE CAULK HORIZ. & VERT. CONNECTIONS BETWEEN CONTROL MODULE & OUTSIDE AIR HOOD.

FOR QUESTIONS, CALL THE CAPTIVE-AIRE (TRI-STATE) OFFICE
 1329 E. KEMPER RD. SUITE 4210
 PHONE: (513) 860-5555
 joe.hertenstein@captiveaire.com

FAN #1 DUB5HFA - EXHAUST FAN (KEF1)



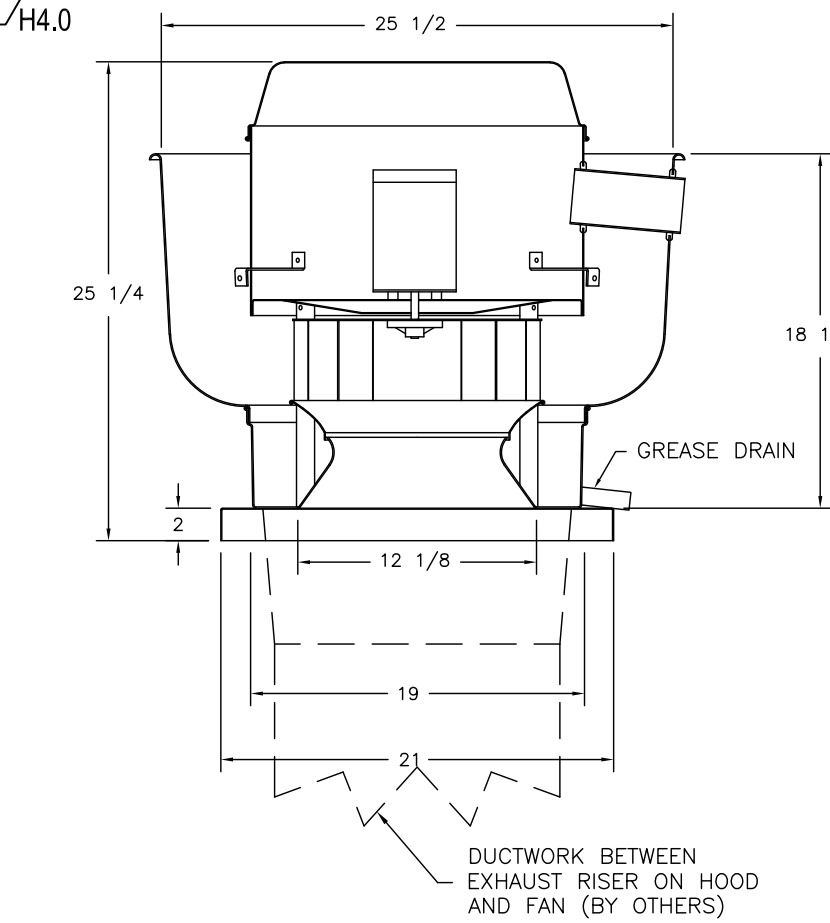
- FEATURES:**
- DIRECT DRIVE CONSTRUCTION (NO BELTS/PULLEYS)
 - ROOF MOUNTED FANS
 - RESTAURANT MODEL
 - UL705 AND UL762 AND UL6-5645
 - VARIABLE SPEED CONTROL
 - INTERNAL WIRING
 - WEATHERPROOF DISCONNECT
 - THERMAL OVERLOAD PROTECTION (SINGLE PHASE)
 - HIGH HEAT OPERATION 300°F (149°C)
 - GREASE CLASSIFICATION TESTING

NORMAL TEMPERATURE TEST
 EXHAUST FAN MUST OPERATE CONTINUOUSLY WHILE EXHAUSTING AIR AT 300°F (149°C) UNTIL ALL FAN PARTS HAVE REACHED THERMAL EQUILIBRIUM, AND WITHOUT ANY DETRIMENTARY EFFECTS TO THE FAN WHICH WOULD CAUSE UNSAFE OPERATION.

ABNORMAL FLARE-UP TEST
 EXHAUST FAN MUST OPERATE CONTINUOUSLY WHILE EXHAUSTING BURNING GREASE VAPORS AT 600°F (316°C) FOR A PERIOD OF 15 MINUTES WITHOUT THE FAN BECOMING DAMAGED TO ANY EXTENT THAT COULD CAUSE AN UNSAFE CONDITION.

- OPTIONS**
- GREASE BOX.
 - EXHAUST FAN HEAT BAFFLE.
 - FAN BASE CERAMIC SEAL - INSTALLED AT PLANT - FOR GREASE DUCTS.
 - ECM WIRING PACKAGE-EXHAUST - PWM SIGNAL FROM ECPM03 PREWIRE (NIDEC MOTOR).

FAN #2 DU33HFA - EXHAUST FAN (KEF2)



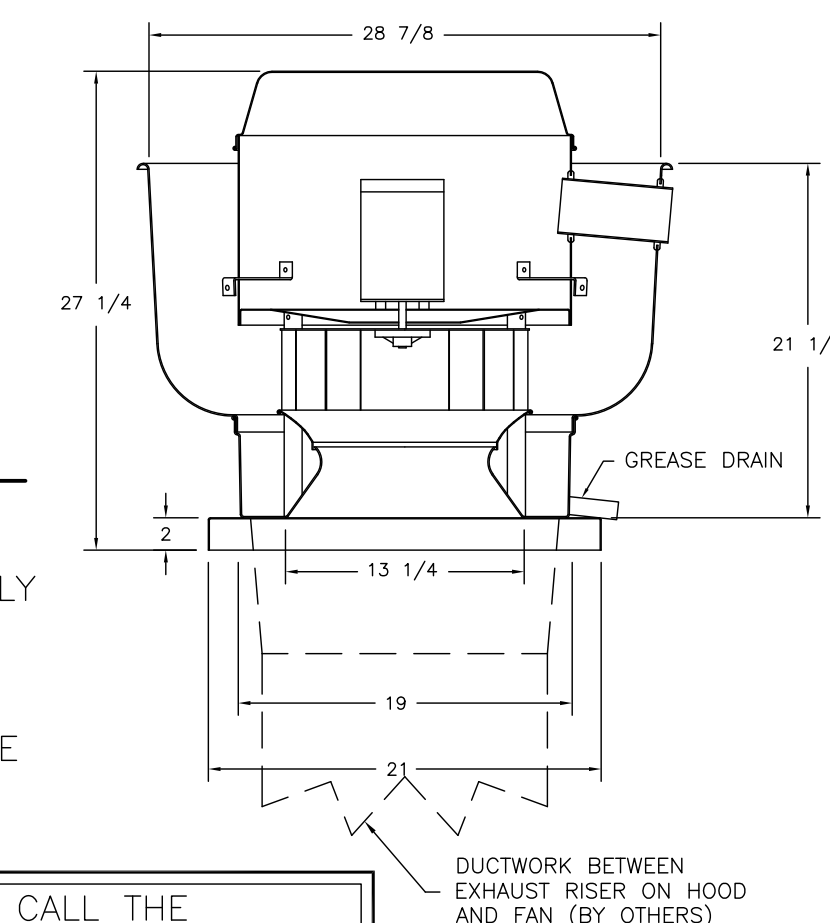
- FEATURES:**
- DIRECT DRIVE CONSTRUCTION (NO BELTS/PULLEYS)
 - ROOF MOUNTED FANS
 - RESTAURANT MODEL
 - UL705 AND UL762 AND UL6-5645
 - VARIABLE SPEED CONTROL
 - INTERNAL WIRING
 - WEATHERPROOF DISCONNECT
 - THERMAL OVERLOAD PROTECTION (SINGLE PHASE)
 - HIGH HEAT OPERATION 300°F (149°C)
 - GREASE CLASSIFICATION TESTING

NORMAL TEMPERATURE TEST
 EXHAUST FAN MUST OPERATE CONTINUOUSLY WHILE EXHAUSTING AIR AT 300°F (149°C) UNTIL ALL FAN PARTS HAVE REACHED THERMAL EQUILIBRIUM, AND WITHOUT ANY DETRIMENTARY EFFECTS TO THE FAN WHICH WOULD CAUSE UNSAFE OPERATION.

ABNORMAL FLARE-UP TEST
 EXHAUST FAN MUST OPERATE CONTINUOUSLY WHILE EXHAUSTING BURNING GREASE VAPORS AT 600°F (316°C) FOR A PERIOD OF 15 MINUTES WITHOUT THE FAN BECOMING DAMAGED TO ANY EXTENT THAT COULD CAUSE AN UNSAFE CONDITION.

- OPTIONS**
- GREASE BOX.
 - EXHAUST FAN HEAT BAFFLE.
 - FAN BASE CERAMIC SEAL - INSTALLED AT PLANT - FOR GREASE DUCTS.
 - ECM WIRING PACKAGE-EXHAUST - PWM SIGNAL FROM ECPM03 PREWIRE (NIDEC MOTOR).

FAN #3 DUB5HFA - EXHAUST FAN (KEF3)

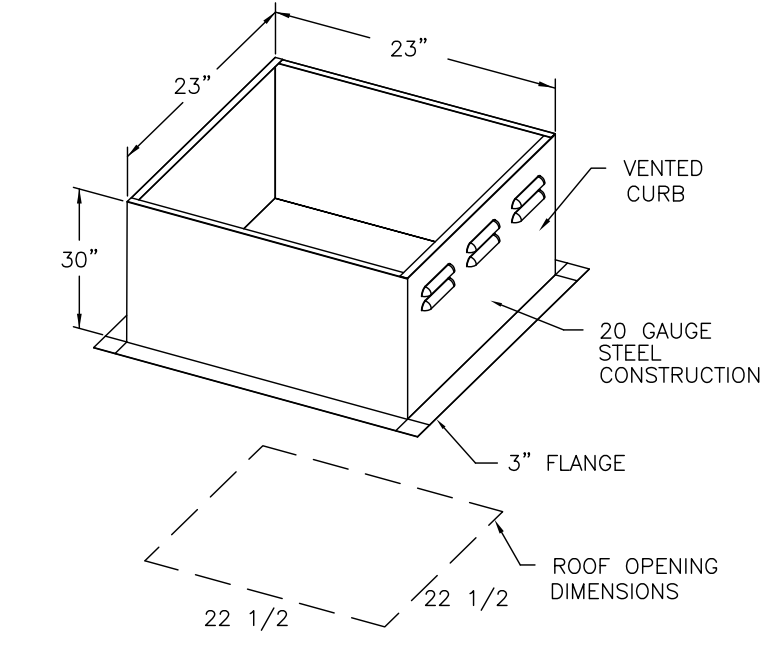


- FEATURES:**
- DIRECT DRIVE CONSTRUCTION (NO BELTS/PULLEYS)
 - ROOF MOUNTED FANS
 - RESTAURANT MODEL
 - UL705 AND UL762 AND UL6-5645
 - VARIABLE SPEED CONTROL
 - INTERNAL WIRING
 - WEATHERPROOF DISCONNECT
 - THERMAL OVERLOAD PROTECTION (SINGLE PHASE)
 - HIGH HEAT OPERATION 300°F (149°C)
 - GREASE CLASSIFICATION TESTING

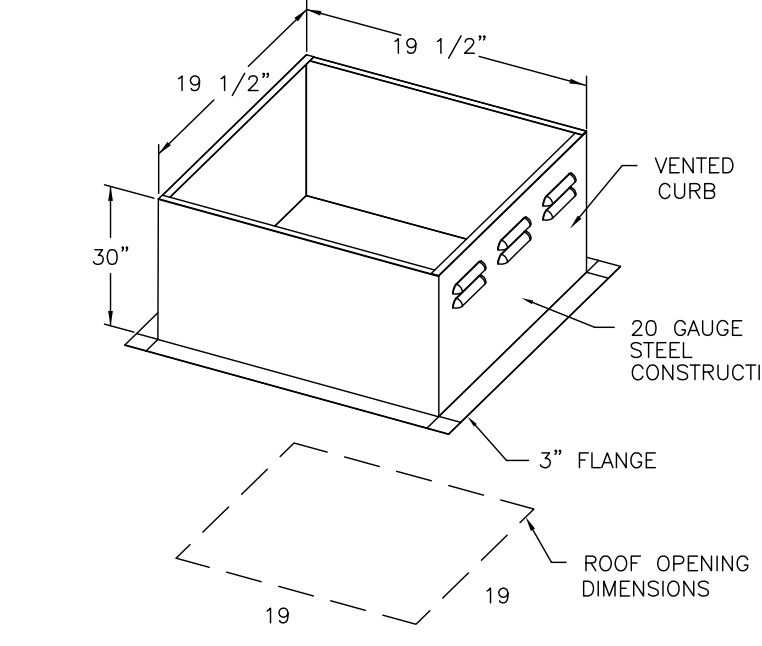
NORMAL TEMPERATURE TEST
 EXHAUST FAN MUST OPERATE CONTINUOUSLY WHILE EXHAUSTING AIR AT 300°F (149°C) UNTIL ALL FAN PARTS HAVE REACHED THERMAL EQUILIBRIUM, AND WITHOUT ANY DETRIMENTARY EFFECTS TO THE FAN WHICH WOULD CAUSE UNSAFE OPERATION.

ABNORMAL FLARE-UP TEST
 EXHAUST FAN MUST OPERATE CONTINUOUSLY WHILE EXHAUSTING BURNING GREASE VAPORS AT 600°F (316°C) FOR A PERIOD OF 15 MINUTES WITHOUT THE FAN BECOMING DAMAGED TO ANY EXTENT THAT COULD CAUSE AN UNSAFE CONDITION.

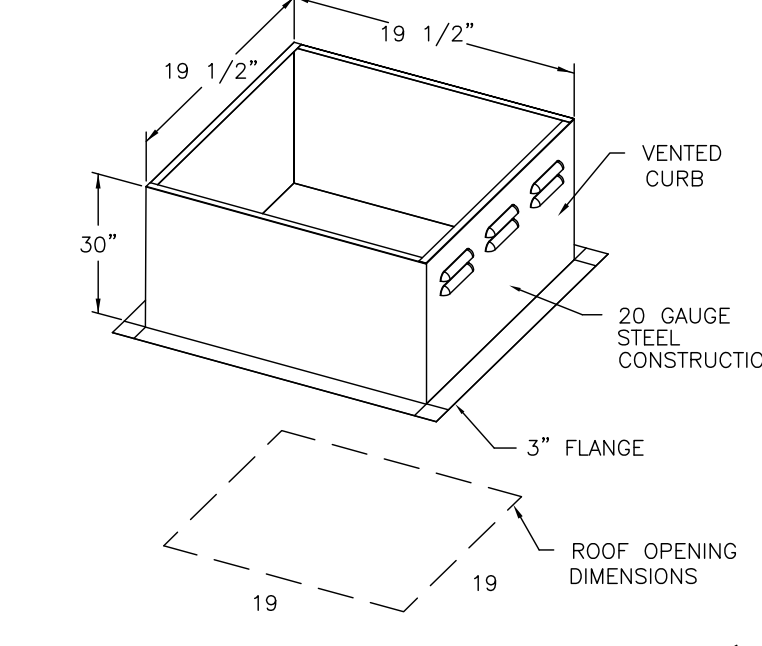
- OPTIONS**
- GREASE BOX.
 - EXHAUST FAN HEAT BAFFLE.
 - FAN BASE CERAMIC SEAL - INSTALLED AT PLANT - FOR GREASE DUCTS.
 - ECM WIRING PACKAGE-EXHAUST - PWM SIGNAL FROM ECPM03 PREWIRE (NIDEC MOTOR).



PITCHED CURBS ARE AVAILABLE FOR PITCHED ROOFS.
 SPECIFY PITCH:
 EXAMPLE: 7/12 PITCH = 30° SLOPE



PITCHED CURBS ARE AVAILABLE FOR PITCHED ROOFS.
 SPECIFY PITCH:
 EXAMPLE: 7/12 PITCH = 30° SLOPE



PITCHED CURBS ARE AVAILABLE FOR PITCHED ROOFS.
 SPECIFY PITCH:
 EXAMPLE: 7/12 PITCH = 30° SLOPE

REVISIONS

NO.	DESCRIPTION	DATE

CAPTIVE-AIRE

Penn Station V2B (Left Hand Proto)

DATE: 04/08/2019

DWG.#: 3789035

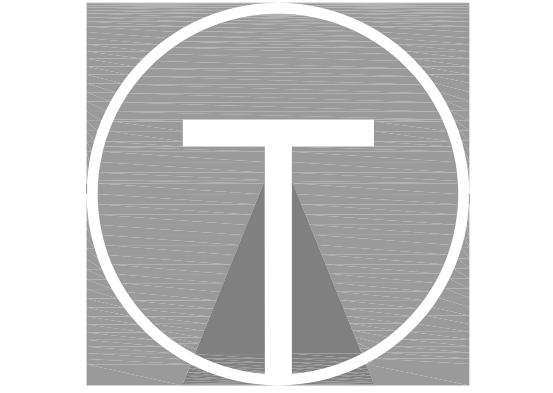
DRAWN BY: JMH120

SCALE: 3/4" = 1'-0"

MASTER DRAWING

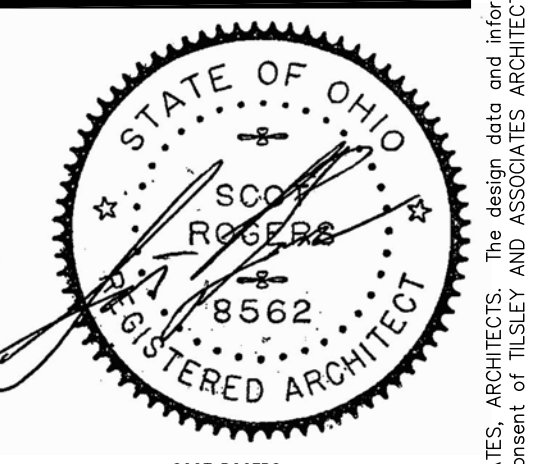
SHEET NO. H3

Air Solutions
 1329 East Kemper Rd., Ste. 4210, Cincinnati, OH, 45246 PHONE: (513) 860-5555



TILSLEY ARCHITECTS
 1140 SAINT GREGORY ST. CINCINNATI, OH 45202
 TEL 513.651.4300
 WWW.TILSLEYARCHITECTS.COM

A New Penn Station Restaurant
 3817 Center Road
 Brunswick, OH 44212



No.	Revision

Checked by SAR Copyright © 2023. All rights reserved. This is a proprietary design of TILSLEY & ASSOCIATES, ARCHITECTS. The design data and information relating thereto is not to be used, disseminated or reproduced in whole or in part without the written consent of TILSLEY AND ASSOCIATES ARCHITECTS, LLC.

Sheet Title: **Captiveaire Shop**

Drawings Issued: **7/5/2023**

As Noted

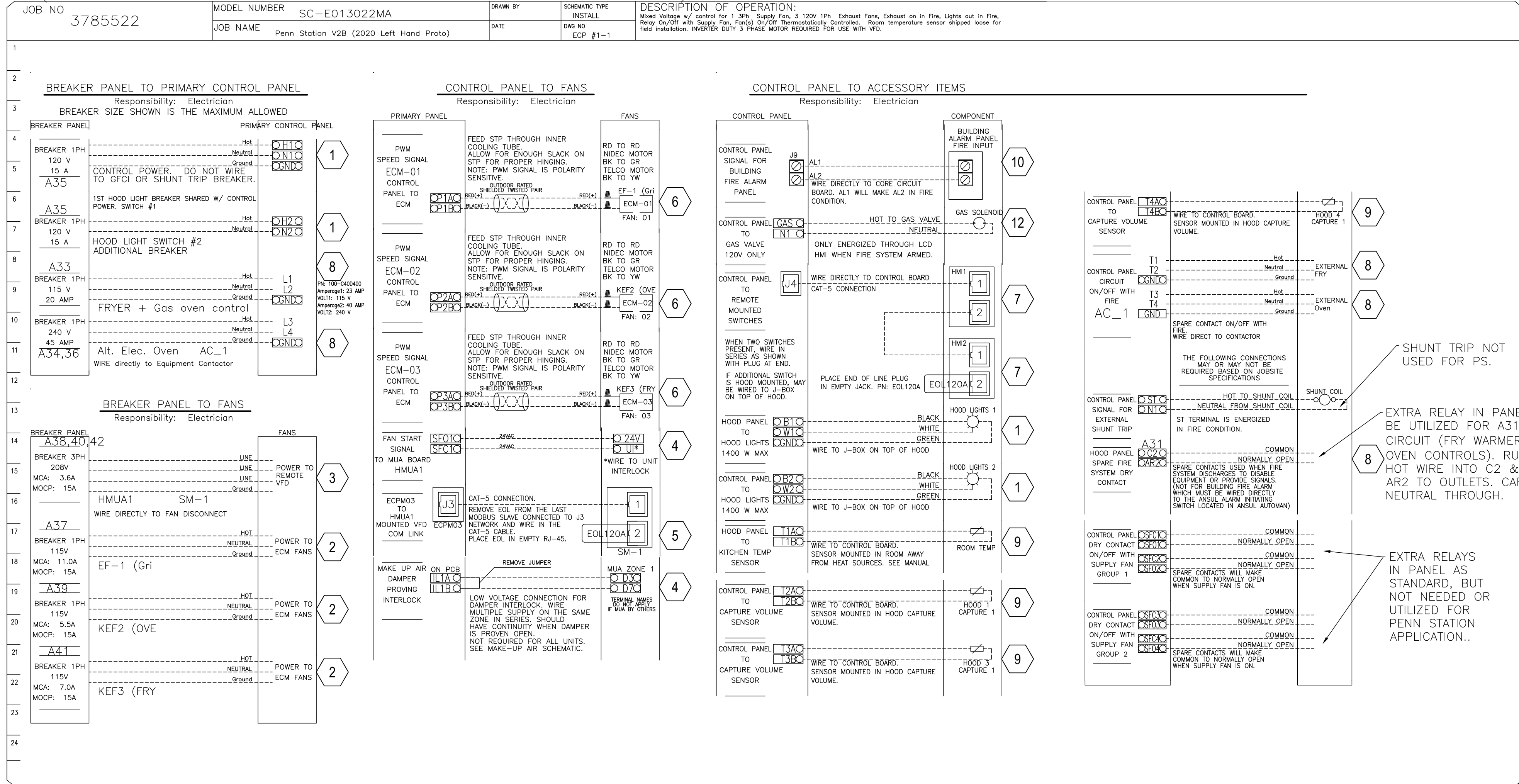
Drawn: **S.Rogers**

23012

ELECTRICAL PACKAGE – JOB#5849882

NO	TAG	PACKAGE #	LOCATION	SWITCHES		OPTION	FANS CONTROLLED					
				LOCATION	QUANTITY		FAN TAG	TYPE	φ	HP	VOLT	FLA
1	ECP1	SC-E013022MA	WALL UTILITY CABINET RIGHT	FACE MOUNT RIGHT SIDE OF HOOD	2 LIGHT	SMART CONTROLS THERMOSTATIC CONTROL W/ RELAY ON/OFF WITH SUPPLY	KEF1	EXHAUST	1	0.750	115	8.9
				HOOD # 1	2 FAN		KEF2-OVEN	EXHAUST	1	0.333	115	4.3
							KEF3-FRY	EXHAUST	1	0.750	115	8.9
							HMUA1	SUPPLY	3	1.500	208	4.4

(HOOD CONTROL PANEL-MOUNTED NEXT TO GRIDDLE HOOD)



HOOD SYSTEM WIRING INSTRUCTIONS BY ELECTRICIAN

- 1) WIRE 120V, 1 PHASE CIRCUIT FROM BUILDING PANEL TO HOOD CONTROL PANEL TO BE USED FOR CONTROLS & LIGHT CIRCUIT.
- 2) WIRE 120V, 1 PHASE CIRCUITS FROM BUILDING PANEL TO EACH EXHAUST FAN (SEPARATELY) TO CAPTIVE-AIRE SUPPLIED FAN EXTERNAL DISCONNECTS (TYPICAL OF ALL EXHAUST FANS).
- 3) WIRE 208V, 3 PHASE CIRCUIT FROM BUILDING PANEL TO MAKE UP AIR FAN ON ROOF & TIE INTO WHIP OFF DISCONNECT SWITCH WITH GROUND.
- 4) RUN A 18-4 LOW VOLTAGE WIRE FOR 24V CIRCUIT FROM SFO1 & SFC1 OF CONTROL PANEL TO THE MAKE UP AIR FOR HEATER CONTROLS J16 PINS 5&6. ALSO INSTALL LOW VOLTAGE FROM D3/D7 OF HEATER TO IL1A & IL1B OF CONTROL PANEL.
- 5) USING THE CAT5 CABLE SUPPLIED BY CAPTIVE-AIRE, WIRE FROM J3 PLUG AT CONTROL PANEL TO LEFT SIDE OF VFD IN MAKE UP AIR UNIT.
- 6) THERE IS A RED & BLACK PAIR OF TWISTED WEATHERPROOF WIRE ALREADY FACTORY CONNECTED TO EACH MOTOR OF EACH EXHAUST FAN LOCATED UNDER THE FAN HOUSING LID. RUN EACH WIRE THROUGH MOTOR BREATHING TUBE & THEN DOWN TO HOOD CONTROL PANEL NEXT TO GRILL HOOD. TIE EACH ONE INTO P#A & P#B RESPECTIVELY FOR EACH FAN AS SHOWN ON SCHEMATIC TO THE LEFT.
- 7) WIRE THE CAT5 CABLE SUPPLIED BY CAPTIVE AIR FROM J4 PLUG TO THE JUNCTION BOX LOCATED ON TOP OF THE GRILL HOOD & PLUG IN FOR GRILL HD SWITCH (HMI). THEN WIRE THE OTHER CAT5 CABLE FROM THE GRILL HOOD JUNCTION BOX TO THE FRY HOOD JUNCTION BOX ON TOP OF HOOD & PLUG INTO J PLUG FOR THE FRY HOOD SWITCH (HMI). YOU ARE WIRING THE SWITCHES (HMI PANELS) IN SERIES. SEE H1.0, H2.0
- 8) WIRE THE 120V 1 PHASE FRYER(S)/WARMER CIRCUITS & THE 240V 1 PHASE ALT. ELEC. OVEN CIRCUIT FROM BUILDING PANEL TO HOOD CONTROL PANEL TO THE RESPECTIVE 120V & 240V CONTACTORS & THEN FROM HOOD CONTROL PANEL TO THE RESPECTIVE WALL OUTLETS.
- 9) USING THE WHITE WIRE SUPPLIED BY CAPTIVE-AIRE WIRE FROM EACH HOOD DUCT SENSOR LOCATED IN HOOD EXHAUST COLLAR OR TOP OF HOOD IN JUNCTION BOX TO HOOD CONTROL PANEL & TIE INTO T2A & T2B, T3A & T3B, T4A & T4B. THEN INSTALL WHITE TEMP SENSOR SUPPLIED BY CAPTIVE AIRE ON RIGHT SIDE OF HOOD SS PANEL & WIRE TO T1A & T2B.
- 10) IF BUILDING ALARM IS PROVIDED WITH BUILDING THEN WIRE DIRECTLY INTO AL1 & AL2 OF THE CONTROL PANEL PER THE BUILDING FIRE PANEL REQUIREMENTS TO RECEIVE AN ALARM SIGNAL UPON FIRE SYSTEM ACTUATION. IF NO BUILDING ALARM, THEN SUPPLY A HORN/LIGHT STROBE & MOUNT IN SIGHT OF HOODS AND TIE DIRECTLY INTO TR2 & C2 OF CONTROL PANEL.
- 11) INSTALL LIGHT BULBS IN HOODS SUPPLIED BY OWNER. VERIFY ALL FANS & LIGHTS POWER UP. CHECK ROTATION FOR SUPPLY FAN. ANY QUESTIONS CONTACT JOE AT 513-860-5555. 5 BULBS REQ'D - SUPPLIED IN GENERAL LIGHTING PACKAGE.
- 12) WIRE POWER FROM G & N1 FROM CONTROL PANEL TO CAS SUPPLIED ELECTRIC GAS VALVE FOR GAS SHUT OFF. MAKE SURE ELECTRIC GAS VALVE IS INSTALLED HORIZONTALLY TO WORK PROPERLY.
- 13) PLUG A CAT5 WIRE INTO COMMUNICATION MODULE TO ROUTER IS RECOMMENDED TO MONITOR THE FIRE SYSTEM 24/7.

REVISIONS

NO.	DESCRIPTION	DATE

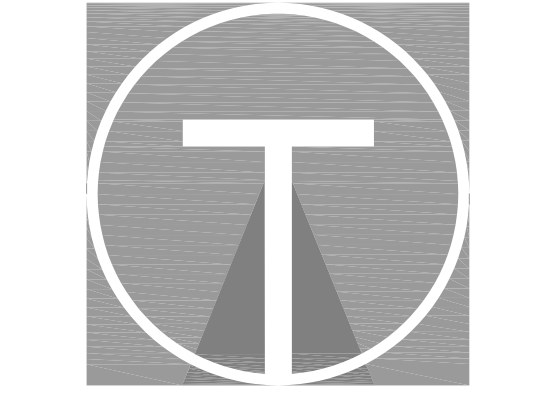
CAPTIVE-AIRE
www.captiveaire.com

Air Solutions
1329 East Kemper Rd., Ste. 4210, Cincinnati, OH 45246 PHONE: (513) 860-5555

Penn Station V2B (Left Hand Proto)

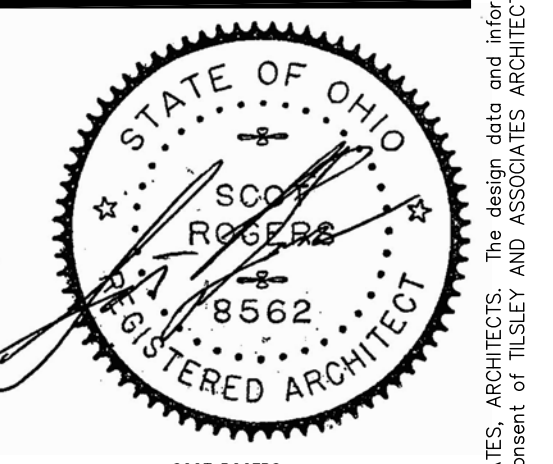
DATE: 04/08/2019
DWG.#: 3789035
DRAWN BY: JMH120
SCALE: 3/4" = 1'-0"
MASTER DRAWING

SHEET NO. H4



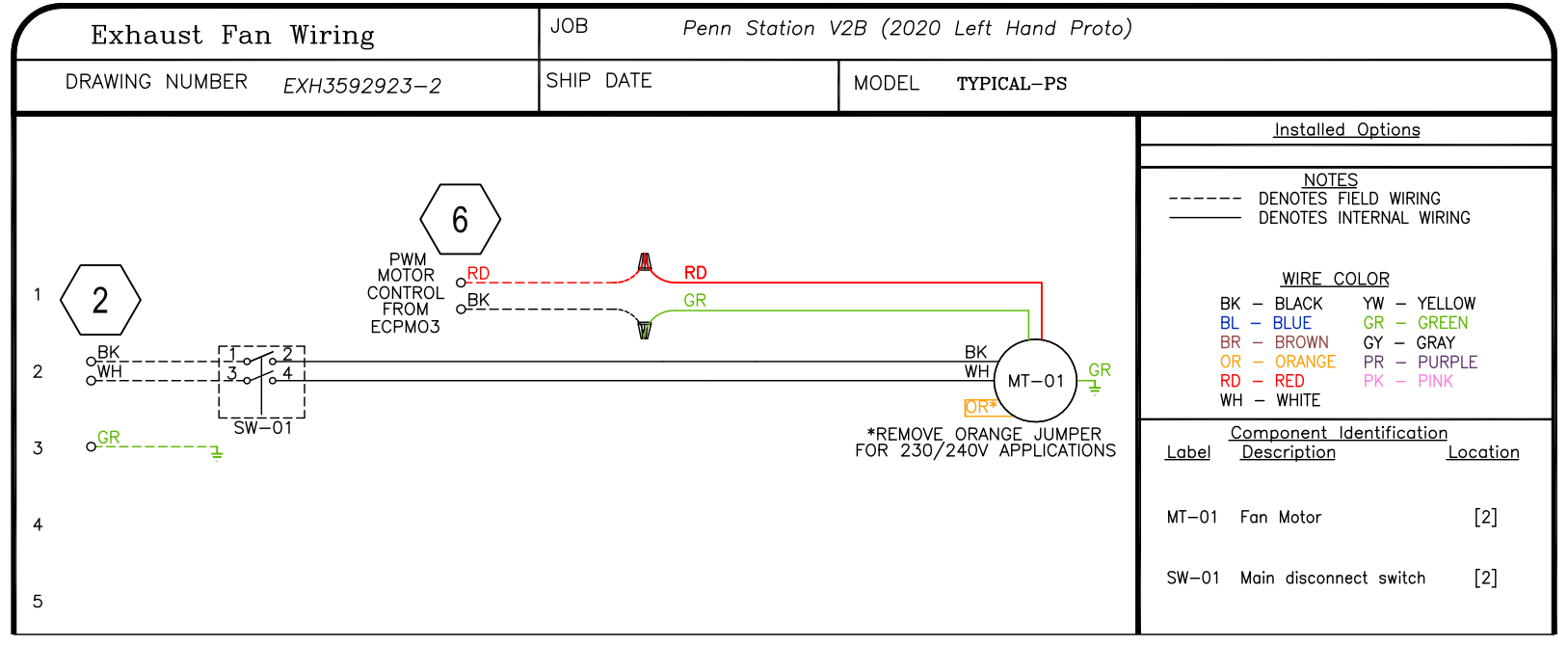
TILSLEY ARCHITECTS
1140 SAINT GREGORY ST. CINCINNATI, OH 45202
TEL 513.651.4300
WWW.TILSLEYARCHITECTS.COM

A New Penn Station Restaurant
3817 Center Road
Brunswick, OH 44212

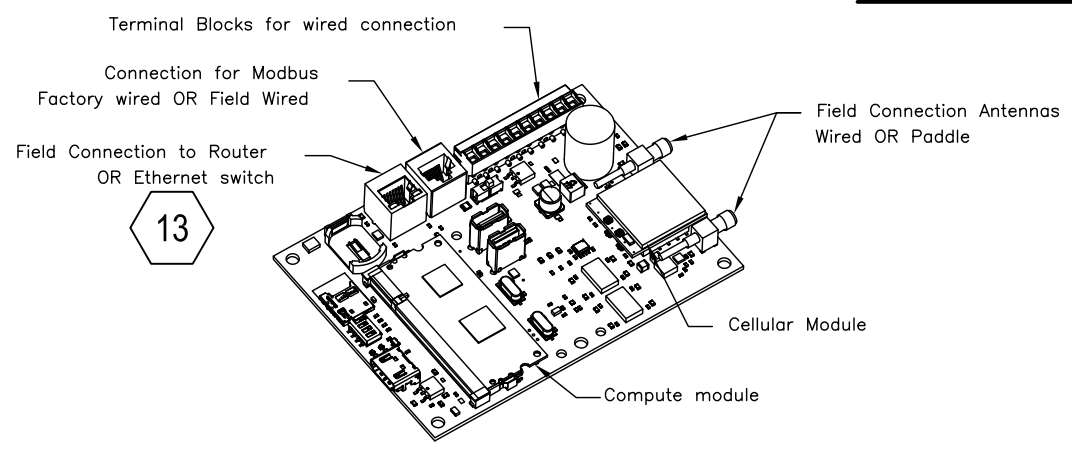


No. Revision

Captiveaire Shop
Drawings
Issued 7/5/2023
Scale As Noted
Drawn S.Rogers
Checked by SAR Copyright © 2023. All rights reserved. This is a proprietary design of TILSLEY & ASSOCIATES, ARCHITECTS. The design, data and information relating thereto is not to be used, disseminated or reproduced in whole or in part without the written consent of TILSLEY & ASSOCIATES, ARCHITECTS, LLC.

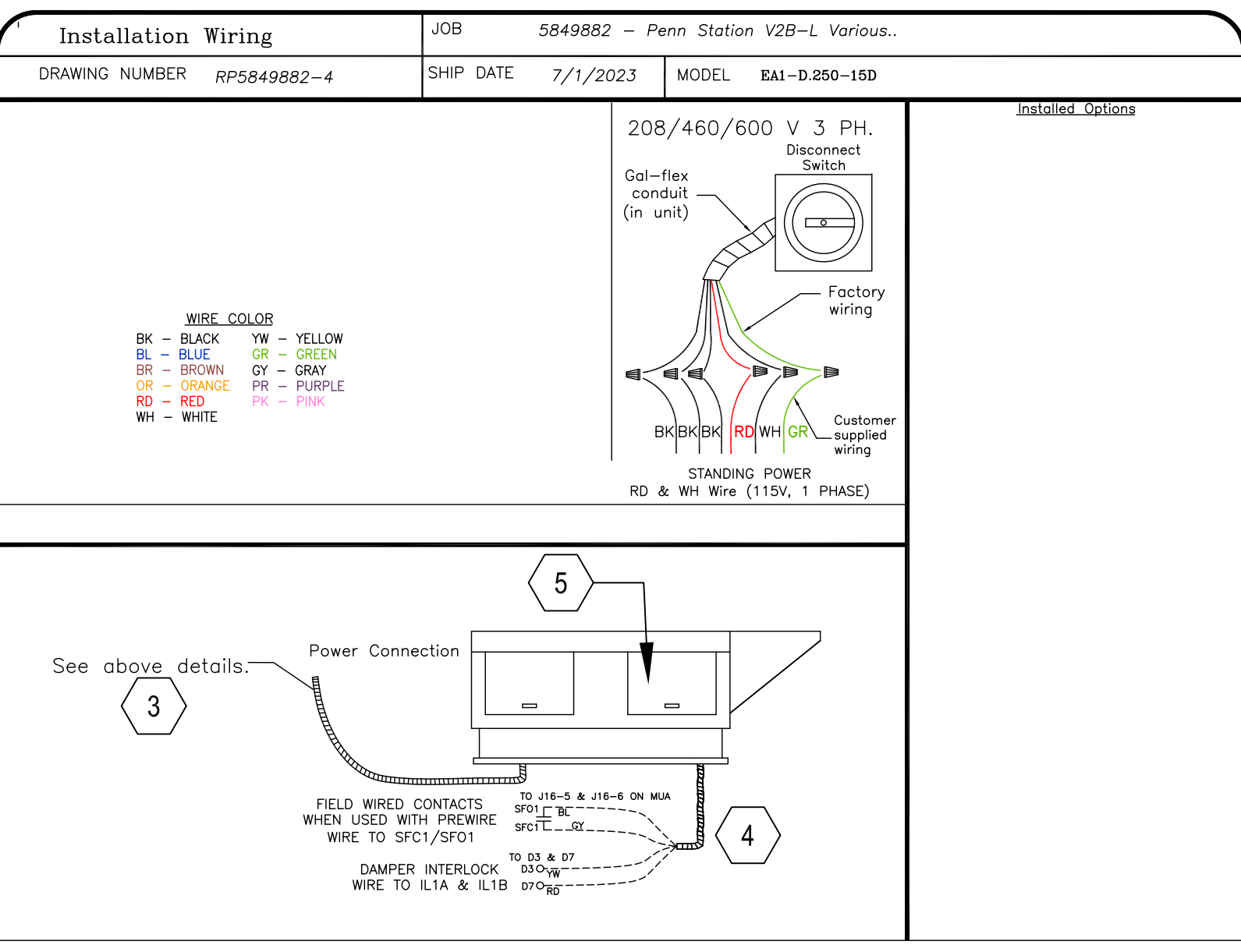


TYPICAL – ALL 3 EXHAUST FANS



FOR QUESTIONS, CALL THE CAPTIVE-AIRE (TRI-STATE) OFFICE
1329 E. KEMPER RD. SUITE 4210
PHONE: (513) 860-5555
joe.hertenstein@captiveaire.com

CASlink Monitor and Control
Hood control panel to support communications to cloud-based Building Management System.
Hood Control Panel to allow cloud-based Building Management System to monitor real time parameters outlined as MONITOR in the points list.
Hood Control Panel to allow cloud-based Building Management System to control parameters outlined as CONTROL in the points list.
Hood Control Panel to allow cloud-based Building Management System to implement SYSTEM ECONOMIZER control strategies for fully integrated Building management.



MAKE-UP AIR UNIT HMUA-1