

Report By:

National TAB
1329 E. KEMPER ROAD
SUITE 4210
CINCINNATI, OH 45246



Report: TAB Report
Function: Test, Adjust, & Balance
Date: 01/18/2026
Completed By: National TAB

PROJECT

Fieldstone @ Chester Springs ALF (Chester Springs, PA)

145 Byers Rd

Chester Springs, PA 19475

Client

D.J. Wagner Heating & Air Conditioning, Inc.
30 Cutler Avenue
Westville, NJ 08093

National TAB

Project: Fieldstone @ Chester Springs ALF (Chester Springs, PA)

Table Of Contents

Section	Page #
Remarks	3
Energy Recovery Unit	9
GRD Layout	15

Issue List

- Basement exhaust fire damper
- Locker room exhaust E1-72
- Second floor Exhaust duct
- Unit configuration
- Unit Outside air controls



Fieldstone @ Chester Springs ALF (Chester Springs, PA)

Project Issue Information

Issue Name : Basement exhaust fire damper
Description : There is a drop off in flow from the first floor exhaust duct down to the basement, branch dampers on the first floor and basement confirmed full open. The fire damper was inspected and confirmed fully open, but there is audible turbulence and the damper is internal to the duct and looks to be taking up 35-40% of the duct flow area.

Created By : National TAB **Assigned To :** National TAB - Tyler Youells
Status : Open
Priority : High **Asset Tag :**
Originated Date : 01/28/2026 - Tyler Youells - National TAB

Project Issue File Details



01/28/2026

Project Issue Response Details

- **01/28/2026 National TAB - Tyler Youells**
 - Suspect the fire damper is the cause of low exhaust flow on the first floor and recommend upsizing damper size.

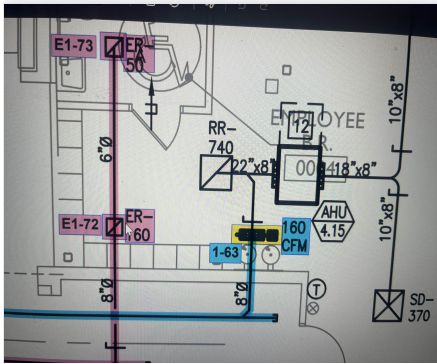


Fieldstone @ Chester Springs ALF (Chester Springs, PA)

Project Issue Information

Issue Name : Locker room exhaust E1-72
Description : Exhaust register E 1-72 serving the locker room is installed as a 6" neck for 160CFM, Basement exhaust is already low but this exhaust register is at 22cfm. recommend upsizing the duct to 8" to allow for more flow.
Created By : National TAB **Assigned To :** National TAB - Tyler Youells
Status : Open
Priority : Medium **Asset Tag :**
Originated Date : 01/28/2026 - Tyler Youells - National TAB

Project Issue File Details



01/28/2026

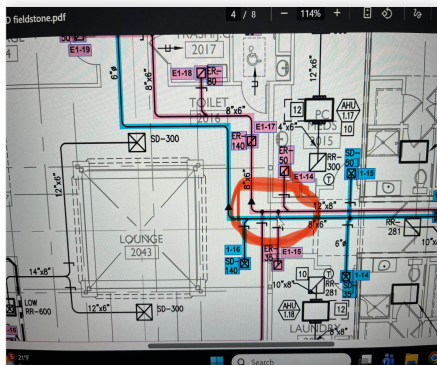


Fieldstone @ Chester Springs ALF (Chester Springs, PA)

Project Issue Information

Issue Name : Second floor Exhaust duct
Description : Towards the end of the exhaust run on the second floor, a 12x8 to 6x8 transitioned occurred too soon causing 2-3 additional hits off the 6x8 duct where it should have been 12x8. the additional cfm load through the 6x8" duct is causing diffusers to be low on flow (E1-16 through E1-20)
Created By : National TAB **Assigned To :** National TAB - Tyler Youells
Status : Open
Priority : Medium **Asset Tag :**
Originated Date : 01/28/2026 - Tyler Youells - National TAB

Project Issue File Details



01/28/2026



Fieldstone @ Chester Springs ALF (Chester Springs, PA)

Project Issue Information

Issue Name : Unit configuration
Description : Unit configuration is installed as a RTU with minimum outside air intake and powered exhaust with heat recovery wheel(Per unit submittals recovery wheel is designed for 1500CFM OA/EX). The application is designed as a DOAS 100% supplied outside air and 100% exhaust with no mixing allowed.

Created By : National TAB **Assigned To :** National TAB - Tyler Youells
Status : Open
Priority : InfoOnly **Asset Tag :**
Originated Date : 01/28/2026 - Tyler Youells - National TAB

Project Issue Response Details

- **01/28/2026 National TAB - Tyler Youells**
 - Note: Engineers have provided revisions to terminal device CFMs to bring unit total flows down to 6210CFM-OA and 4800CFM Exhaust



Fieldstone @ Chester Springs ALF (Chester Springs, PA)

Project Issue Information

Issue Name : Unit Outside air controls
Description : Found OA flow station unhooked from controls and OA damper fully closed with the unit in auto operation mode. Per the no return air mixing requirement OA needs to be 100% open. NTi permanently affixed the OA damper to be 100% open since the unit runs occupied 24/7.
Created By : National TAB **Assigned To :** National TAB - Tyler Youells
Status : Open
Priority : InfoOnly **Asset Tag :**
Originated Date : 01/28/2026 - Tyler Youells - National TAB

Project Issue File Details



01/28/2026



01/28/2026

Project Issue Response Details

- **01/28/2026 National TAB - Tyler Youells**
 - Sub-note: should the outside air damper close, both the supply and powered exhaust fans will pull from the same duct and cause negative building pressure and unit cabinet extreme negative pressure.



National TAB

Project: Fieldstone @ Chester Springs ALF (Chester Springs, PA)

System/Unit: Energy Recovery Unit

Asset: ERU-1

AREA:COMMON AREAS

Unit Data	
	Actual
MFG	DAIKIN
Model Num	DPS020AHMG4DW-4
Serial Num	FBOU230501800
Num Exh-Filters 1	2
Exh-Filter Size 1	18X24X2
Num OA-Filters 1	11
OA-Supply Size 1	18X24X2
Num OA-Filters 2	9
OA-Filter Size 2	18X24X4

Exhaust Fan Motor Data		
	Design	Actual
Motor MFG	-	2X DAIKIN
Frame	-	NL
Horsepower	5.0	3300W
Motor Rpm	-	3300
Phase	3	3
Voltage (rated)	480	480
Amperage (rated)	-	5.4
Service Factor	-	NL

OA Fan Motor Data		
	Design	Actual
Motor MFG	-	BALDOR RELIANCE
Frame	-	215T
Horsepower	7.5	10
Motor Rpm	-	1770
Phase	3	3
Voltage (rated)	480	460
Amperage (rated)	-	12.5
Service Factor	-	1.15

Exhaust Fan Test Data		
	Design	Actual
Exh-ERU CFM	4800	4418
Exh-ERU RPM	1603	2277
Exh-ERU System SetPt	-	69%
RL Voltage	480	495.1/494.2/497.8
RL Amperage	-	1.9/1.9/1.9/2.1/2.1/2.1
Brake Horse Power	-	3.19

Exhaust Fan Performance Data		
	Design	Actual
Exh-ERU Filter Delta SP	-	*COMBINED
Exh-ERU Wheel Delta SP	-	*1.76"
Exh-ERU Inlet T (db/wb)	-	72.0/52.4
Exh-ERU Discharge T (db/wb)	-	52.6/41.2
Exh-ERU Delta T	-	19.4/11.2

OA Fan Test Data		
	Design	Actual
OA-ERU CFM	6210	5971
OA-ERU RPM	2083	2330
Motor Frequency	-	79.0 HZ
RL Voltage	480	495.1/494.2/497.8
RL Amperage	-	10.4 VFD

OA Fan Performance Data		
	Design	Actual
OA-ERU Filter Delta SP	-	*COMBINED
OA-ERU Wheel Delta SP	-	*2.87"
OA-ERU Inlet T (db/wb)	-	45.6/36.8
OA-ERU Discharge T (db/wb)	-	56.1/43.1
OA-ERU Delta T	-	10.5/6.3

Completed By: Tyler Youells on 01/27/2026



National TAB

Project: Fieldstone @ Chester Springs ALF (Chester Springs, PA)

Energy Recovery Unit

Diffuser Supply (GRD)

ERU-1/COMMON AREAS

Asset							
Asset Name	Location	Type	Size	DESIGN CFM	CFM(1)	FINAL CFM	% to design
1-1	3058 HALLWAY	SD	4	25	31	25	100.0
1-2	3056 PC OFFICE	SD	4	10	23	11	110.0
1-3	3057 HALLWAY	SD	4	40	47	44	110.0
1-4	3051 LAUNDRY	SD	4	35	29	33	94.3
1-5	3034 PC MEDS	SD	4	30	31	31	103.3
1-6	3059 HALLWAY	SD	8	120	41	109	90.8
1-7	3060 HALLWAY	SD	4	20	26	22	110.0
1-8	3057 HALLWAY	SD	8	110	77	103	93.6
1-9	3001A READING LOUNGE	SD	8	110	92	107	97.3
1-10	3001A READING LOUNGE	SD	8	160	111	156	97.5
1-11	2037 PC OFFICE	SD	4	15	48	16	106.7
1-12	2001 MULTI PURPOSE	SD	10	210	250	213	101.4
1-13	2039 HALLWAY	SD	4	30	48	27	90.0
1-14	2032 LAUNDRY	SD	4	35	45	37	105.7
1-15	2015 PC MEDS	SD	4	50	53	47	94.0
1-16	2043 LOUNGE	SD	8	140	112	130	92.9
1-17	2040 HALLWAY	SD	4	20	77	18	90.0
1-18	2038 HALLWAY	SD	4	25	33	27	108.0
1-19	227 LAUNDRY	SD	4	25	102	24	96.0
1-20	2005 PANTRY	SD	4	40	49	37	92.5
1-21	226 MC DINING	SD	6	520	522	483	92.9
1-22	200 HALLWAY	SD	4	30	25	27	90.0
1-23	204 STORAGE	AHU-2.13 DAMPER		30	65	32	106.7
1-24	203 OFFICE	AHU-2.14 DAMPER		30	73	28	93.3
1-25	1051 HALLWAY	SD	8	120	140	120	100.0
1-26	1045 DISCOVERY	AHU-1.12 DAMPER		85	96	80	94.1
1-27	MULTI PURPOSE	SR	14X6	55	93	53	96.4
1-28	1044 MARKETING	SD	4	15	62	17	113.3
1-29	1050A HALLWAY	SD	4	60	79	64	106.7
1-30	1042 ADMIN	SD	4	15	54	16	106.7
1-31	1041 CONFERENCE	SD	6	60	66	65	108.3
1-32	1052 HALLWAY	SD	4	30	10	28	93.3
1-33	1015 REHAB	SD	8	100	102	98	98.0
1-34	1047 OFFICE	AHU-1.08 DAMPER		45	20	42	93.3
1-35	1038 EXEC DIRECTOR	SD	6	20	34	22	110.0
1-36	1017 PC MEDS	SD	6	30	45	33	110.0
1-37	1016 BEAUTY/BARBER	AHU-1.06 DAMPER		100	128	98	98.0
1-38	1035 LAUNDRY	SD	4	35	55	33	94.3
1-39	1025 LOUNGE	SD	8	160	183	153	95.6
1-40	1053 HALLWAY	SD	4	20	28	22	110.0
1-41	1014 PUB	SD	14	570	546	517	90.7
1-42	1051 HALLWAY	SD	10	370	426	355	95.9
1-43	1011 PRIVATE DINING	AHU-3.03 DAMPER		150	163	146	97.3
1-44	1010 PC DINING	SD	10	370	263	351	94.9
1-45	1006 OFFICE	SD	4	15	62	16	106.7
1-46	128 MC DINING	SD	10	300	225	305	101.7
1-47	129 STORAGE CL	AHU-3.08 DAMPER		160	0	161	100.6

ERU-1/COMMON AREAS

Asset							
Asset Name	Location	Type	Size	DESIGN CFM	CFM(1)	FINAL CFM	% to design
1-48	129 STORAGE CL	SD	10	160	360	163	101.9
1-49	100 HALLWAY	SD	8	75	83	80	106.7
1-50	101 MC DISCOVERY	SD	6	50	51	45	90.0
1-51	100 HALLWAY	AHU-2.03 DAMPER		35	5	37	105.7
1-52	100 HALLWAY	AHU-2.04 DAMPER		30	53	28	93.3
1-53	HALLWAY	SD	4	25	66	27	108.0
1-54	0009 FACILITIES	SD	6	50	70	48	96.0
1-55	0005 BUILDING STORAGE	SD	8	120	125	113	94.2
1-56	0008 MAINTENANCE	SD	6	50	25	51	102.0
1-57	0010 HOUSE KEEPING	SD	6	50	25	49	98.0
1-58	0017 LAUNDRY WASHERS	SD	6	50	34	46	92.0
1-59	0021 LAUNDRY DRYERS (HALL)	SD	6	50	55	48	96.0
1-60	0013 FIRE PUMP	SD	6	50	55	45	90.0
1-61	0012 MECH & PLUMBING	SD	6	30	36	27	90.0
1-62	0027 HALLWAY	SD	8	100	102	91	91.0
1-63	0002 EMPLOYEE LOUNGE	AHU-4.15 DAMPER		160	134	149	93.1
1-64	0007 RESIDENT STORAGE	SD	8	170	145	156	91.8
1-65	0001 TRAINING	SD	8	120	114	108	90.0
1-66	0016 KITCHEN STORAGE	SD	6	80	76	78	97.5
Total				6200	6504	5971	96.31%

Diffuser Ret/Exh (GRD)

ERU-1/COMMON AREAS

Asset								
Asset Name	Location	Type	Size	DESIGN CFM	AK	CFM(1)	FINAL CFM	% to design
E1-1	3029 TOILET	ER	6	50	1.1	44	51	102.0
E1-2	3059 HALLWAY	ER	12X12	40	1.1	50	41	102.5
E1-3	3034 PC MEDS	ER	12X12	30	1.1	39	29	96.7
E1-4	3051 LAUNDRY	ER	12X12	35	1.1	31	36	102.9
E1-5	3046 M/E	ER	6	50	1.1	70	52	104.0
E1-6	LOUNGE	ER	12X12	120	1.1	102	111	92.5
E1-7	3036 TRASH/JAN	ER	12X12	50	1.1	52	45	90.0
E1-8	3043 STORAGE	ER	6	50	1.1	52	46	92.0
E1-9	3035 TOILER	ER	6	50	1.1	49	45	90.0
E1-10	3060 HALLWAY	ER	6	20	1.1	36	21	105.0
E1-11	3001A READING LOUNGE	ER	12X12	235	1.1	197	242	103.0
E1-12	3001A READING LOUNGE	ER	12X12	160	1.1	120	145	90.6
E1-13	2010 TOILET	ER	6	50	1.1	46	46	92.0
E1-14	2015 PC MEDS	ER	12X12	50	1.1	42	50	100.0
E1-15	2032 LAUNDRY	ER	12X12	35	1.1	20	38	108.6
E1-16	2027 M/E	ER	6	50	1.1	31	47	94.0
E1-17	2043 LOUNGE	ER	8X6	140	1.1	139	177	126.4
E1-18	2017 TRSH/JAN	ER	8X6	80	1.1	25	27	33.8
E1-19	2024 STORAGE	ER	6	50	1.1	25	24	48.0
E1-20	2016 TOILET	ER	6	50	1.1	0	27	54.0
E1-21	2040 HALLWAY	ER	6	20	1.1	22	20	100.0
E1-22	2001 MULTI PURPOSE	ER	12X18	0	1.1	0	0	-
E1-23	2005 PANTRY	ER	12X12	40	1.1	30	42	105.0
E1-24	226 MC DINING	ER	18X18	325	1.1	330	326	100.3
E1-25	226A TOILET	ER	6	50	1.1	60	50	100.0
E1-26	226 MC DINING	ER	14X8	450	1.1	495	451	100.2
E1-27	1014 PUB	ER	12X10	0	1.1	0	0	-

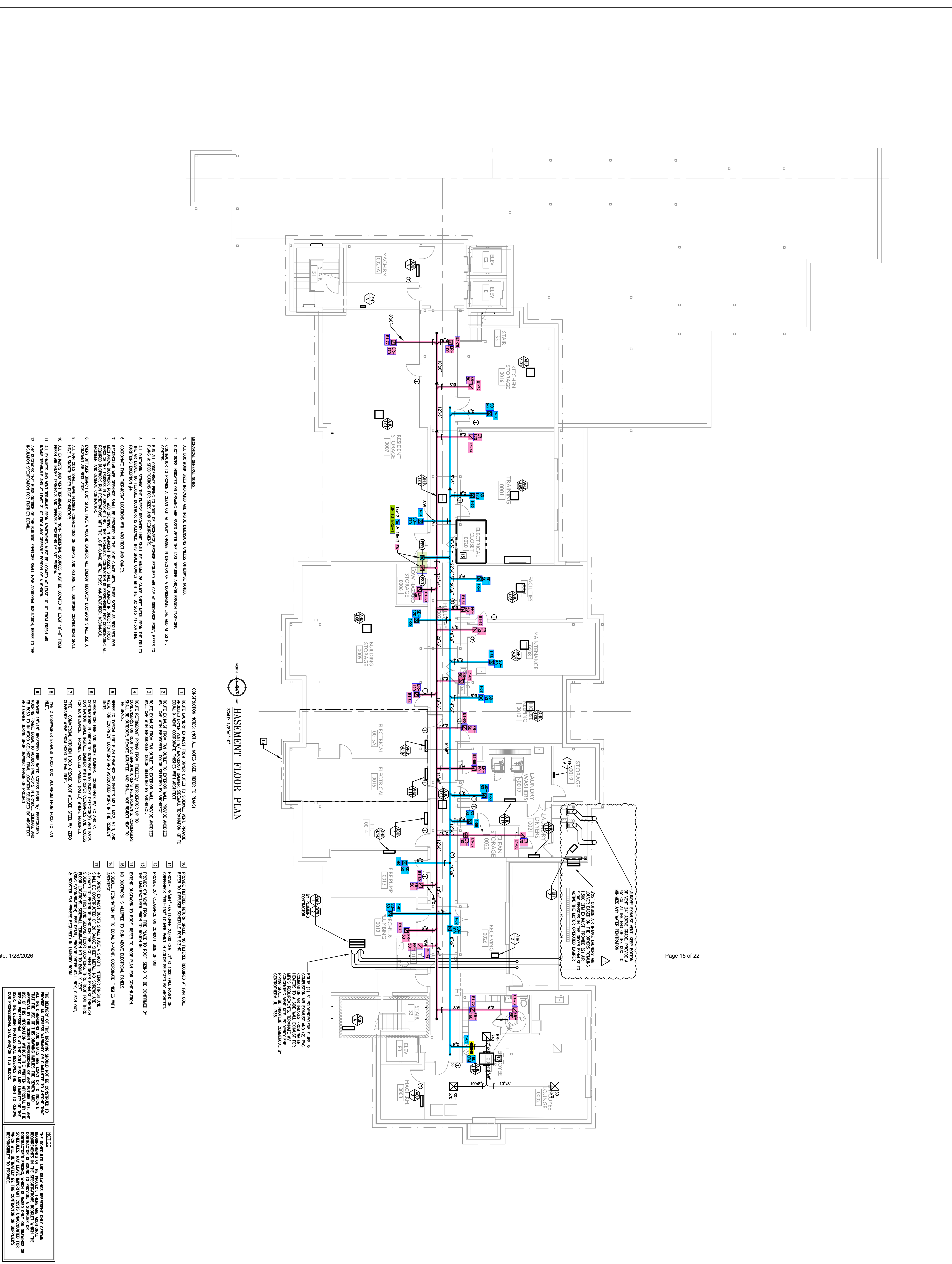
ERU-1/COMMON AREAS

Asset								
Asset Name	Location	Type	Size	DESIGN CFM	AK	CFM(1)	FINAL CFM	% to design
E1-28	1045 DISCOVERY	ER	6	50	1.1	56	45	90.0
E1-29	100 HALLWAY	ER	10	0	1.1	0	0	-
E1-30	1044 MARKETING	ER	6	15	1.1	30	16	106.7
E1-31	1046 MARKETING	ER	6	20	1.1	29	22	110.0
E1-32	1047 OFFICE	ER	6	15	1.1	28	16	106.7
E1-33	1041 CONFERENCE	ER	6	65	1.1	103	66	101.5
E1-34	1048 HUMAN RESOURCES	ER	6	15	1.1	24	14	93.3
E1-35	1049 BUSINESS	ER	6	10	1.1	26	11	110.0
E1-36	1015 REHAB	ER	12X12	80	1.1	58	74	92.5
E1-37	1015B OFFICE	ER	1X12	20	1.1	20	18	90.0
E1-38	1015A TOILET	ER	12X12	50	1.1	68	48	96.0
E1-39	1016 BEAUTY/BARBER	ER	6	100	1.1	92	100	100.0
E1-40	1050 HALLWAY	ER	12X12	60	1.1	73	63	105.0
E1-41	1036	ER	6	15	1.1	15	16	106.7
E1-42	1037 TOILET	ER	6	50	1.1	54	52	104.0
E1-43	1038 EXECUTIVE DIRECTOR	ER	12X12	20	1.1	25	22	110.0
E1-44	1035 LAUNDRY	ER	12X12	35	1.1	48	33	94.3
E1-45	1017 PC MEDS	ER	12X12	30	1.1	60	28	93.3
E1-46	1025 LOUNGE	ER	8	60	1.1	92	54	90.0
E1-47	1018 TOILET	ER	12X12	50	1.1	43	48	96.0
E1-48	1019 TRASH/JAN	ER	8X6	50	1.1	47	51	102.0
E1-49	1013 TOILET	ER	12X12	50	1.1	42	51	102.0
E1-50	1012 TOILET	ER	12X12	50	1.1	39	46	92.0
E1-51	1011 PC PRIVATE DINING	ER	8	150	1.1	66	154	102.7
E1-52	1010 PC DINING	ER		0	1.1	0	0	-
E1-53	1006 OFFICE	ER	12X12	15	1.1	27	15	100.0
E1-54	128 MC DINING	ER	12X10	0	1.1	0	0	-
E1-55	130 TOILET	ER	6	50	1.1	55	50	100.0
E1-56	100 HALLWAY	ER	12X12	75	1.1	85	82	109.3
E1-57	1004 TOILET	ER	6	50	1.1	55	51	102.0
E1-58	100 HALLWAY	ER	8X6	65	1.1	74	68	104.6
E1-59	101 DISCOVERY	ER	6	50	1.1	113	50	100.0
E1-60	0006 LOW HAZARD STORAGE	ER	12X12	45	1.1	33	33	73.3
E1-61	0009 FACILITIES	ER	6	50	1.1	41	41	82.0
E1-62	0008 MAINTENANCE	ER	6	50	1.1	48	48	96.0
E1-63	0024 J.C.	ER	6	50	1.1	47	47	94.0
E1-64	0005 BUILDING STORAGE	ER	12X12	120	1.1	113	113	94.2
E1-65	0010 HOUSEKEEPING	ER	6	50	1.1	40	40	80.0
E1-66	0017 LAUNDRY WASHERS	ER	6	50	1.1	68	68	136.0
E1-67	0022 CLEAN STORAGE	ER	6	30	1.1	41	41	136.7
E1-68	0021 LAUNDRY DRYERS	ER	6	20	1.1	47	47	235.0
E1-69	0013 FIRE PUMP	ER	6	50	1.1	34	34	68.0
E1-70	0012 MECH & PLUMBING	ER	6	30	1.1	35	35	116.7
E1-71	0011 TOILET	ER	6	50	1.1	27	27	54.0
E1-72	0002 EMPLOYEE LOUNGE	ER	8	160	1.1	22	22	13.8
E1-73	0004 EMPLOYEE BATHROOM	ER	6	50	1.1	22	22	44.0

ERU-1/COMMON AREAS

Asset								
Asset Name	Location	Type	Size	DESIGN CFM	AK	CFM(1)	FINAL CFM	% to design
E1-74	0001 TRAINING	ER	8	120	1.1	86	86	71.7
E1-75	0016 KITCHEN STORAGE	ER	6	80	1.1	42	42	52.5
E1-76	0027 HALLWAY	ER	6	100	1.1	56	56	56.0
E1-77	0007 RESIDENT STORAGE	ER	8X6	50	1.1	63	63	126.0
Total				4800		4519	4418	92.04%

Completed By: Tyler Youells on 01/27/2026



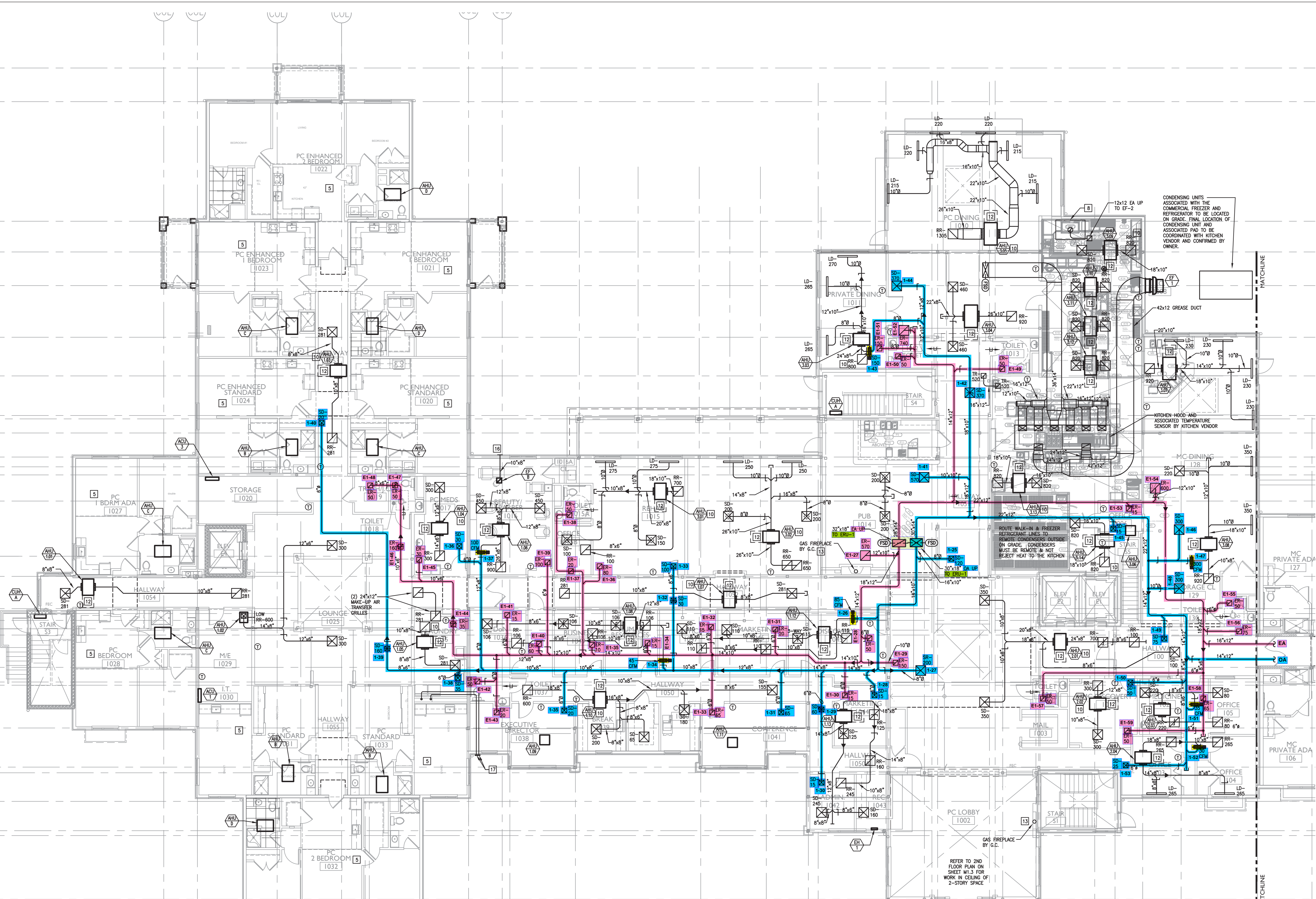
MECHANICAL
BASEMENT FLOOR PLAN
 SCALE: 1/8"=1'-0"

- MECHANICAL GENERAL NOTES:**
1. ALL DUCTWORK SIZES INDICATED ARE INSIDE DIMENSIONS UNLESS OTHERWISE NOTED.
 2. DUCT SIZES INDICATED ON DRAWING ARE BASED UPON THE LIST SYSTEM AND/OR BRANCH TAKE-OFF.
 3. CONTRACTOR TO PROVIDE A CLEAN OUT AT EVERY CHANGE IN DIRECTION OF A CONDUIT LINE AND AT 90 FT.
 4. RAIN AL CONDUIT SYSTEM TO BE PROVIDED FOR ALL CONDUITS EXCEPT AT 90 FT AT DISCHARGE FROM, REFER TO PLANS & SPECIFICATIONS FOR SIZES AND REQUIREMENTS.
 5. ALL DUCTWORK SERVING THE EXHAUST RECOVERY UNIT SHALL BE MINIMUM 26 GAUGE SHEET METAL FROM THE EXH TO FRESH AIR COILS, MIN.
 6. CONDENSATE PANS, TRAPWAYS LOCATIONS WITH SIZES AND OWNER.
 7. RECTANGULAR DUCT SYSTEMS SHALL BE PROVIDED IN THE LIGHT-DUTY METAL TRUSS SYSTEM AS REQUIRED FOR THROUGH THE TRUSSES IN A STRAIGHT LINE. THE MECHANICAL CONTRACTOR IS RESPONSIBLE FOR COORDINATING ALL DUCTS, TRAPWAYS, AND GENERAL CONTRACTOR.
 8. EXIST BRASSER BRANCH DUCT SHALL HAVE A VOLUME DAMPER, ALL DUCTS RECOVER DUCTWORK SHALL USE A CONDENSATE AIR REGULATOR.
 9. ALL EXHAUST AND VENT TERMINALS FROM NON-RESIDENTIAL SOURCES MUST BE LOCATED AT LEAST 10'-0" FROM FRESH AIR INTAKE TERMINALS AND OPPOSITE SIDES OF AIR INTAKE.
 10. ALL EXHAUST AND VENT TERMINALS FROM NON-RESIDENTIAL SOURCES MUST BE LOCATED AT LEAST 10'-0" FROM INSULATION SPECIFICATION FOR FURTHER DETAIL.
 11. ALL EXHAUST AND VENT TERMINALS FROM NON-RESIDENTIAL SOURCES MUST BE LOCATED AT LEAST 10'-0" FROM INSULATION SPECIFICATION FOR FURTHER DETAIL.
 12. ALL EXHAUST AND VENT TERMINALS FROM NON-RESIDENTIAL SOURCES MUST BE LOCATED AT LEAST 10'-0" FROM INSULATION SPECIFICATION FOR FURTHER DETAIL.

- CONSTRUCTION NOTES: (NOT ALL NOTES USED, REFER TO PLANS)**
1. ROUTE LAUNDRY EXHAUST FROM DRYER OUTLET TO SIGNAL VENT, PROVIDE ANODIZED BRASS VENT W/ BUSHING DAMPER, SIGNAL TERMINATION KIT TO EQUAL X-VENT COMPONENT FINISHES WITH ARCHITECT.
 2. ROUTE EXHAUST FROM PAN OUTLET TO EXTERIOR WALL, PROVIDE ANODIZED BRASS VENT WITH BUSHING DAMPER, SIGNAL TERMINATION KIT TO EQUAL X-VENT COMPONENT FINISHES WITH ARCHITECT.
 3. ROUTE EXHAUST FROM PAN OUTLET TO EXTERIOR WALL, PROVIDE ANODIZED BRASS VENT WITH BUSHING DAMPER, SIGNAL TERMINATION KIT TO EQUAL X-VENT COMPONENT FINISHES WITH ARCHITECT.
 4. ROUTE EXHAUST FROM PAN OUTLET TO EXTERIOR WALL, PROVIDE ANODIZED BRASS VENT WITH BUSHING DAMPER, SIGNAL TERMINATION KIT TO EQUAL X-VENT COMPONENT FINISHES WITH ARCHITECT.
 5. REFER TO TYPICAL UNIT PLAN DRAWINGS ON SHEETS M2.1, M2.2, M2.3, AND M2.4 FOR EXHAUST LOCATIONS AND ASSOCIATED WORK IN THE RESIDENT UNITS.
 6. COMBINATION FIRE AND SMOKE DAMPER, GOVERNOR W/ EC AND FA, REFER TO TYPICAL UNIT PLAN DRAWINGS ON SHEETS M2.1, M2.2, M2.3, AND M2.4 FOR EXHAUST LOCATIONS AND ASSOCIATED WORK IN THE RESIDENT UNITS.
 7. THE 2 DISMISHER EXHAUST HOOD DUCT ALUMINUM FROM HOOD TO PAN INLET.
 8. PROVIDE 18"x18" RECESSED FIRE RATED ACCESS PANEL W/ FERROGRAD RB-505-70 IN WOOD GRAINS, FINAL LOCATION SELECTED BY ARCHITECT AND OWNER DURING SHOP DRAWING PHASE OF PROJECT.
 9. PROVIDE 18"x18" RECESSED FIRE RATED ACCESS PANEL W/ FERROGRAD RB-505-70 IN WOOD GRAINS, FINAL LOCATION SELECTED BY ARCHITECT AND OWNER DURING SHOP DRAWING PHASE OF PROJECT.
 10. PROVIDE 18"x18" RECESSED FIRE RATED ACCESS PANEL, NO FITTER REQUIRED AT PAN COIL, REFER TO DRYER SCHEDULE FOR SIZES.
 11. PROVIDE 25"x44" O.A. LOWER 21000 CFM, 1" @ 1000 FPM, BASED ON GREENWEX TSU-151-1 LOWER PAINT IN COLOR SELECTED BY ARCHITECT.
 12. PROVIDE 2" CLEARANCE ON CONDUIT SIZE OF UNIT.
 13. PROVIDE 2" HOLE FROM THE PLACE TO ROOF, SIZES TO BE COMPARED BY ARCHITECT.
 14. EXTERIOR DISMISHER TO ROOF, REFER TO ROOF PLAN FOR CONNECTION.
 15. NO DUCTWORK IS ALLOWED TO RUN ABOVE ELECTRICAL PANELS.
 16. SEVERAL TERMINATION KIT TO EQUAL X-VENT COMPONENT FINISHES WITH ARCHITECT.
 17. 4"x4" EXHAUST DUCTS SHALL HAVE A SMOOTH INTERIOR FINISH AND ALLOWED TO PENETRATE THROUGH THE DUCT, VENT DUCTS EXHAUST THROUGH FLOOR LOCATIONS, SIGNAL TERMINATION KIT TO EQUAL X-VENT COMPONENT FINISHES WITH ARCHITECT.
 18. 4"x4" EXHAUST DUCTS SHALL HAVE A SMOOTH INTERIOR FINISH AND ALLOWED TO PENETRATE THROUGH THE DUCT, VENT DUCTS EXHAUST THROUGH FLOOR LOCATIONS, SIGNAL TERMINATION KIT TO EQUAL X-VENT COMPONENT FINISHES WITH ARCHITECT.
 19. 4"x4" EXHAUST DUCTS SHALL HAVE A SMOOTH INTERIOR FINISH AND ALLOWED TO PENETRATE THROUGH THE DUCT, VENT DUCTS EXHAUST THROUGH FLOOR LOCATIONS, SIGNAL TERMINATION KIT TO EQUAL X-VENT COMPONENT FINISHES WITH ARCHITECT.
 20. 4"x4" EXHAUST DUCTS SHALL HAVE A SMOOTH INTERIOR FINISH AND ALLOWED TO PENETRATE THROUGH THE DUCT, VENT DUCTS EXHAUST THROUGH FLOOR LOCATIONS, SIGNAL TERMINATION KIT TO EQUAL X-VENT COMPONENT FINISHES WITH ARCHITECT.

Date: 1/28/2026

THE DESIGNER OF THIS DRAWING SHALL HAVE BEEN CONSULTED BY THE SUBMITTER OF THIS DRAWING AND SHALL BE RESPONSIBLE FOR THE ACCURACY OF THE INFORMATION PROVIDED. THE DESIGNER'S RESPONSIBILITY IS LIMITED TO THE INFORMATION PROVIDED AND DOES NOT INCLUDE THE DESIGNER'S RESPONSIBILITY TO PROVIDE THE INFORMATION TO THE SUBMITTER OF THIS DRAWING. THE DESIGNER'S RESPONSIBILITY IS LIMITED TO THE INFORMATION PROVIDED AND DOES NOT INCLUDE THE DESIGNER'S RESPONSIBILITY TO PROVIDE THE INFORMATION TO THE SUBMITTER OF THIS DRAWING.



- CONSTRUCTION NOTES: (NOT ALL NOTES USED, REFER TO PLANS)
- ROUTE LAUNDRY EXHAUST FROM DRYER OUTLET TO SIDEWALL VENT. PROVIDE ANODIZED DRYER VENT W/ BACKDRAFT DAMPER. SIDEWALL TERMINATION KIT TO EQUAL X-VENT. COORDINATE FINISHES WITH ARCHITECT.
 - ROUTE EXHAUST FROM FAN OUTLET TO EXTERIOR WALL. PROVIDE ANODIZED WALL CAP WITH BIRDSCREEN. COLOR SELECTED BY ARCHITECT.
 - ROUTE EXHAUST FROM FAN OUTLET TO EXTERIOR WALL. PROVIDE ANODIZED WALL CAP WITH BIRDSCREEN. COLOR SELECTED BY ARCHITECT.
 - ROUTE RESTAURANT PIPING FROM FREEZER/ REFRIGERATOR UP TO CONDENSERS ON ROOF PER MANUFACTURER'S REQUIREMENTS. CONDENSERS SHALL BE OUTDOOR, REMOTE MOUNTED, AND SHALL NOT REJECT HEAT TO THE SPACE.
 - REFER TO TYPICAL UNIT PLAN DRAWINGS ON SHEETS M2.1, M2.2, M2.3, AND M2.4, FOR EQUIPMENT LOCATIONS AND ASSOCIATED WORK IN THE RESIDENT UNITS.
 - COMBINATION FIRE AND SMOKE DAMPER. COORDINATE W/ EC AND FA CONTRACTORS IN ORDER TO INTEGRATE INTO SMOKE DETECTOR(S) AND PACP. CONTRACTOR SHALL INSTALL DAMPER WITH PROPER CLEARANCES AND ACCESS FOR MAINTENANCE. PROVIDE ACCESS PANELS (RATED) WHERE REQUIRED.
 - TYPE 1 COMMERCIAL KITCHEN HOOD GREASE DUCT WELDED STEEL W/ ZERO CLEARANCE WRAP FROM HOOD TO FAN INLET.
 - TYPE 2 DISHWASHER EXHAUST HOOD DUCT ALUMINUM FROM HOOD TO FAN INLET.
 - PROVIDE 18"x18" RECESSED FIRE RATED ACCESS PANEL W/ PERFORATED MUDRING FRAME. EQUAL TO ACQUOR FWC-5015 IN DRYWALL CEILINGS, AND FB-5050-12 IN WOOD CEILINGS. FINAL LOCATION SELECTED BY ARCHITECT AND OWNER DURING SHOP DRAWING PHASE OF PROJECT.
 - PROVIDE FILTERED RETURN GRILLE. NO FILTERED REQUIRED AT FAN COIL. REFER TO DIFFUSER SCHEDULE FOR SIZING.
 - PROVIDE 78"x64" O.A. LOUVER 23,000 CFM, 1" Ø 1000 FPM. BASED ON GREENHECK TSU-153" LOUVER PAINT IN COLOR SELECTED BY ARCHITECT.
 - PROVIDE 30" CLEARANCE ON CONDUIT SIDE OF UNIT
 - PROVIDE 6" VENT FROM FIRE PLACE TO ROOF. SIZING TO BE CONFIRMED BY THE MANUFACTURER PRIOR TO ROUGH IN.
 - EXTEND DUCTWORK TO ROOF. REFER TO ROOF PLAN FOR CONTINUATION.
 - NO DUCTWORK IS ALLOWED TO RUN ABOVE ELECTRICAL PANELS.
 - SIDEWALL TERMINATION KIT TO EQUAL X-VENT. COORDINATE FINISHES WITH ARCHITECT.
 - 4" DRYER EXHAUST DUCTS SHALL HAVE A SMOOTH INTERIOR FINISH AND SHALL BE CONSTRUCTED OF 26 GAUGE SHEET METAL. NO SCREWS ARE ALLOWED TO PROTRUDE THROUGH THE DUCT. ROOF DRYER EXHAUST THROUGH SIDEWALL FOR FIRST AND SECOND FLOOR LOCATIONS, THRU ROOF FOR THIRD FLOOR LOCATIONS. SIDEWALL TERMINATION KIT TO EQUAL X-VENT (SINGLE/COMBINATION). PER DETAIL. PROVIDE DRYER WALL BOX, CLEAN OUT, & BOOSTER FAN WHERE REQUIRED IN LAUNDRY ROOM.

PARTIAL FIRST FLOOR PLAN - MECHANICAL
 SCALE: 1/8"=1'-0"

- MECHANICAL GENERAL NOTES:
- ALL DUCTWORK SIZES INDICATED ARE INSIDE DIMENSIONS UNLESS OTHERWISE NOTED.
 - DUCT SIZES INDICATED ON DRAWING ARE BASED AFTER THE LAST DIFFUSER AND/OR BRANCH TAKE-OFF.
 - CONTRACTOR TO PROVIDE A CLEAN OUT AT EVERY CHANGE IN DIRECTION OF A CONDENSATE LINE AND AT 50 FT. CENTERS.
 - RUN ALL CONDENSATE PIPING TO POINT OF DISCHARGE. PROVIDE REQUIRED AIR DAP AT DISCHARGE POINT. REFER TO PLANS & SPECIFICATIONS FOR SIZES AND REQUIREMENTS.
 - ALL DUCTWORK SERVING THE ENERGY RECOVERY UNIT SHALL BE MINIMAL 26 GAUGE SHEET METAL FROM THE ERU TO THE AIR DEVICE. NO FLEXIBLE DUCTWORK IS ALLOWED. THIS SHALL COMPLY WITH THE IBC 2015 717.5.4 FIRE PARTITIONS EXCEPTION #4.
 - COORDINATE FINAL THERMOSTAT LOCATIONS WITH ARCHITECT AND OWNER.
 - RECTANGULAR WEB OPENINGS SHALL BE PROVIDED IN THE LIGHT-GAUGE METAL TRUSS SYSTEM AS REQUIRED FOR MECHANICAL DUCTWORK RUNS. WEB OPENINGS IN ADJACENT TRUSSES SHALL BE ALIGNED IN ORDER TO PASS THROUGH THE TRUSSES IN A STRAIGHT LINE. THE MECHANICAL CONTRACTOR IS RESPONSIBLE FOR COORDINATING ALL REQUIRED DUCTWORK RUN PENETRATIONS WITH THE LIGHT-GAUGE METAL TRUSS MANUFACTURER, MECHANICAL ENGINEER, AND GENERAL CONTRACTOR.
 - EVERY DIFFUSER BRANCH DUCT SHALL HAVE A VOLUME DAMPER. ALL ENERGY RECOVERY DUCTWORK SHALL USE A CONSTANT AIR REGULATOR.
 - ALL FAN COILS SHALL HAVE FLEXIBLE CONNECTIONS ON SUPPLY AND RETURN. ALL DUCTWORK CONNECTIONS SHALL HAVE A SMOOTH TAPER DUCT CONNECTOR.
 - ALL EXHAUSTS AND VENT TERMINALS FROM NON-RESIDENTIAL SOURCES MUST BE LOCATED AT LEAST 10'-0" FROM FRESH AIR INTAKE TERMINALS AND OPERABLE PORTIONS OF ANY WINDOW.
 - ALL EXHAUSTS AND VENT TERMINALS FROM APARTMENTS MUST BE LOCATED AT LEAST 10'-0" FROM FRESH AIR INTAKE TERMINALS AND AT LEAST 3'-0" FROM ANY OPERABLE PORTION OF A WINDOW.
 - ANY DUCTWORK THAT RUNS OUTSIDE OF THE BUILDING ENVELOPE SHALL HAVE ADDITIONAL INSULATION. REFER TO THE INSULATION SPECIFICATION FOR FURTHER DETAIL.

THE DELIVERY OF THIS DRAWING SHOULD NOT BE CONSTRUED TO PROVIDE AN EXPRESS WARRANTY OR GUARANTEE TO ANYONE THAT ALL THE DIMENSIONS AND DETAILS ARE EXACT OR TO INDICATE THAT THE USE OF THIS DRAWING IMPLIES THE REVIEW AND APPROVAL BY THE DESIGN PROFESSIONAL OF ANY FUTURE USE. ANY USE OF THIS INFORMATION WITHOUT THE WRITTEN APPROVAL BY THE DESIGN PROFESSIONAL IS AT THE SOLE RISK AND LIABILITY OF THE USER. THE DESIGN PROFESSIONAL RESERVES THE RIGHT TO REMOVE OUR PROFESSIONAL SEAL AND/OR TITLE BLOCK.

NOTICE
 THE SCHEDULES AND DRAWINGS REPRESENT ONLY CERTAIN REQUIREMENTS OF THE PROJECT. THERE ARE ADDITIONAL REQUIREMENTS IN THE SPECIFICATIONS BOOKLET WHICH THE CONTRACTOR IS BOUND TO PROVIDE. A SUPPLIER OR CONTRACTOR'S PRICING, WHICH IS BASED ONLY ON DRAWINGS OR SCHEDULES, MAY LEAVE IMPORTANT COSTS UNACCOUNTED FOR WHICH WILL ULTIMATELY BE THE CONTRACTOR OR SUPPLIER'S RESPONSIBILITY TO PROVIDE.



PARTIAL FIRST FLOOR PLAN - MECHANICAL
SCALE: 1/8"=1'-0"

MECHANICAL GENERAL NOTES:

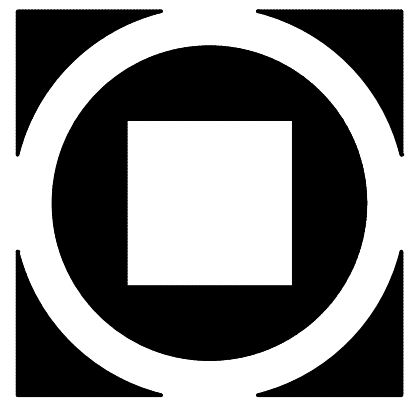
1. ALL DUCTWORK SIZES INDICATED ARE INSIDE DIMENSIONS UNLESS OTHERWISE NOTED.
2. DUCT SIZES INDICATED ON DRAWING ARE BASED AFTER THE LAST DIFFUSER AND/OR BRANCH TAKE-OFF.
3. CONTRACTOR TO PROVIDE A CLEAN OUT AT EVERY CHANGE IN DIRECTION OF A CONDENSATE LINE AND AT 50 FT. CENTERS.
4. RUN ALL CONDENSATE PIPING TO POINT OF DISCHARGE, PROVIDE REQUIRED AIR GAP AT DISCHARGE POINT, REFER TO PLANS & SPECIFICATIONS FOR SIZES AND REQUIREMENTS.
5. ALL DUCTWORK SERVING THE ENERGY RECOVERY UNIT SHALL BE MINIMAL 26 GAUGE SHEET METAL FROM THE ERU TO THE AIR DEVICE. NO FLEXIBLE DUCTWORK IS ALLOWED. THIS SHALL COMPLY WITH THE IBC 2015 717.5.4 FIRE PARTITIONS EXCEPTION #4.
6. COORDINATE FINAL THERMOSTAT LOCATIONS WITH ARCHITECT AND OWNER.
7. RECTANGULAR WEB OPENINGS SHALL BE PROVIDED IN THE LIGHT-GAUGE METAL TRUSS SYSTEM AS REQUIRED FOR MECHANICAL DUCTWORK RUNS. WEB OPENINGS IN ADJACENT TRUSSES SHALL BE ALIGNED IN ORDER TO PASS THROUGH THE TRUSSES IN A STRAIGHT LINE. THE MECHANICAL CONTRACTOR IS RESPONSIBLE FOR COORDINATING ALL REQUIRED DUCTWORK RUN PENETRATIONS WITH THE LIGHT-GAUGE METAL TRUSS MANUFACTURER, MECHANICAL ENGINEER, AND GENERAL CONTRACTOR.
8. EVERY DIFFUSER BRANCH DUCT SHALL HAVE A VOLUME DAMPER. ALL ENERGY RECOVERY DUCTWORK SHALL USE A CONSTANT AIR REGULATOR.
9. ALL FAN COILS SHALL HAVE FLEXIBLE CONNECTIONS ON SUPPLY AND RETURN. ALL DUCTWORK CONNECTIONS SHALL HAVE A SMOOTH TAPER DUCT CONNECTOR.
10. ALL EXHAUSTS AND VENT TERMINALS FROM NON-RESIDENTIAL SOURCES MUST BE LOCATED AT LEAST 10'-0" FROM FRESH AIR INTAKE TERMINALS AND OPERABLE PORTIONS OF ANY WINDOW.
11. ALL EXHAUSTS AND VENT TERMINALS FROM APARTMENTS MUST BE LOCATED AT LEAST 10'-0" FROM FRESH AIR INTAKE TERMINALS AND AT LEAST 3'-0" FROM ANY OPERABLE PORTION OF A WINDOW.
12. ANY DUCTWORK THAT RUNS OUTSIDE OF THE BUILDING ENVELOPE SHALL HAVE ADDITIONAL INSULATION, REFER TO THE INSULATION SPECIFICATION FOR FURTHER DETAIL.

CONSTRUCTION NOTES: (NOT ALL NOTES USED, REFER TO PLANS)


1. ROUTE LAUNDRY EXHAUST FROM DRYER OUTLET TO SIDEWALL VENT. PROVIDE ANODIZED DRYER VENT W/ BACKDRIFT DAMPER. SIDEWALL TERMINATION KIT TO EQUAL X-VENT. COORDINATE FINISHES WITH ARCHITECT.
2. ROUTE EXHAUST FROM FAN OUTLET TO EXTERIOR WALL. PROVIDE ANODIZED WALL CAP WITH BIRDSCREEN. COLOR SELECTED BY ARCHITECT.
3. ROUTE EXHAUST FROM FAN OUTLET TO EXTERIOR WALL. PROVIDE ANODIZED WALL CAP WITH BIRDSCREEN. COLOR SELECTED BY ARCHITECT.
4. ROUTE REFRIGERANT PIPING FROM FREEZER/ REFRIGERATOR UP TO CONDENSER(S) ON ROOF PER MANUFACTURER'S REQUIREMENTS. CONDENSERS SHALL BE OUTDOOR, REMOTE MOUNTED, AND SHALL NOT REJECT HEAT TO THE SPACE.
5. REFER TO TYPICAL UNIT PLANS DRAWINGS ON SHEETS M2.1, M2.2, M2.3, AND M2.4 FOR EQUIPMENT LOCATIONS AND ASSOCIATED WORK IN THE RESIDENT UNITS.
6. COMBINATION FIRE AND SMOKE DAMPER. COORDINATE W/ EC AND FA CONTRACTORS IN ORDER TO INTEGRATE INTO SMOKE DETECTOR(S) AND FACP. CONTRACTOR SHALL INSTALL DAMPER WITH PROPER CLEARANCES AND ACCESS FOR MAINTENANCE. PROVIDE ACCESS PANELS (RATED) WHERE REQUIRED.
7. TYPE 1 COMMERCIAL KITCHEN HOOD GREASE DUCT WELDED STEEL W/ ZERO CLEARANCE WRAP FROM HOOD TO FAN INLET.
8. TYPE 2 DISHWASHER EXHAUST HOOD DUCT ALUMINUM FROM HOOD TO FAN INLET.
9. PROVIDE 18"x18" RECESSED FIRE RATED ACCESS PANEL W/ PERFORATED MINIDRING FRAME. EQUAL TO ACDUOR FWC-5015 IN DRYWALL CEILING, AND FS-5066-TD IN WOOD CEILING. FINAL LOCATION SELECTED BY ARCHITECT AND OWNER DURING SHOP DRAWING PHASE OF PROJECT.
10. PROVIDE FILTERED RETURN GRILLE. NO FILTERED REQUIRED AT FAN COIL. REFER TO DRYER SCHEDULE FOR SIZING.
11. PROVIDE 78"x64" O.A. LOUVER 23,000 CFM, 1" @ 1000 FPM BASED ON GREENECK TESU-153" LOUVER PAINT IN COLOR SELECTED BY ARCHITECT.
12. PROVIDE 30" CLEARANCE ON CONDUIT SIDE OF UNIT
13. PROVIDE 6" VENT FROM FIRE PLACE TO ROOF. SIZING TO BE CONFIRMED BY THE MANUFACTURER PRIOR TO ROUGH IN.
14. EXTEND DUCTWORK TO ROOF. REFER TO ROOF PLAN FOR CONTINUATION.
15. NO DUCTWORK IS ALLOWED TO RUN ABOVE ELECTRICAL PANELS.
16. SIDEWALL TERMINATION KIT TO EQUAL X-VENT. COORDINATE FINISHES WITH ARCHITECT.
17. 4" DRYER EXHAUST DUCTS SHALL HAVE A SMOOTH INTERIOR FINISH AND SHALL BE CONSTRUCTED OF 26 GAUGE SHEET METAL. NO SCREENS ARE ALLOWED TO PROTRUDE THROUGH THE DUCT. VENT ORDER EXHAUST THROUGH SIDEWALL FOR FIRST AND SECOND FLOOR LOCATIONS, THRU ROOF FOR THIRD FLOOR LOCATIONS. SIDEWALL TERMINATION KIT TO EQUAL X-VENT (SINGLE/COMBINATION), PER DETAIL. PROVIDE DRYER WALL BOX, CLEAN OUT, & BOOSTER FAN *WHERE REQUIRED) IN LAUNDRY ROOM.

THE DELIVERY OF THIS DRAWING SHOULD NOT BE CONSTRUED TO PROVIDE AN EXPRESS WARRANTY OR GUARANTEE TO ANYONE THAT THE USE OF THIS DRAWING IMPLIES THE REVIEW AND APPROVAL BY THE DESIGN PROFESSIONAL OF ANY FUTURE USE. ANY USE OF THIS INFORMATION WITHOUT THE WRITTEN APPROVAL BY THE DESIGN PROFESSIONAL IS AT THE SOLE RISK AND LIABILITY OF THE USER. THE DESIGN PROFESSIONAL RESERVES THE RIGHT TO REMOVE OUR PROFESSIONAL SEAL AND/OR TITLE BLOCK.


NOTICE
THE SCHEDULES AND DRAWINGS REPRESENT ONLY CERTAIN REQUIREMENTS OF THE PROJECT. THERE ARE ADDITIONAL REQUIREMENTS IN THE SPECIFICATIONS BOOKLET WHICH THE CONTRACTOR IS BOUND TO PROVIDE. A SUPPLIER OR CONTRACTOR'S PRICING, WHICH IS BASED ONLY ON DRAWINGS OR SCHEDULES, MAY LEAVE IMPORTANT COSTS UNACCOUNTED FOR WHICH WILL ULTIMATELY BE THE CONTRACTOR OR SUPPLIER'S RESPONSIBILITY TO PROVIDE.



KIMMEL BOGRETTE
Architecture + Site
482 Norriswood Road, Suite 200
Blue Bell, PA 19422
Phone: 610.834.7805
Facsimile: 610.834.7815
© COPYRIGHT 2018 KIMMEL BOGRETTE ARCHITECTURE + SITE, INC. ALL RIGHTS RESERVED.



05/06/22



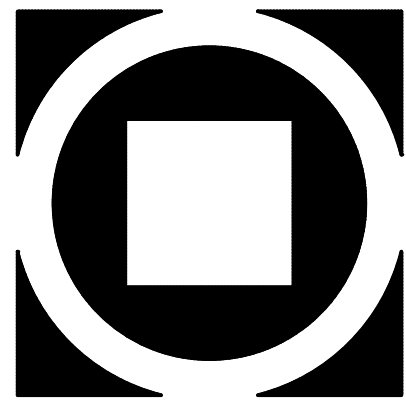
McHUGH
ENGINEERING ASSOCIATES INC.
1500 North 20th Street, Suite 200, Chester Springs, PA 19388
Phone: 610.834.7805
www.mchugheng.com

FIELD STONE @ CHESTER SPRINGS
ASSISTED LIVING FACILITY
145 BYERS RD
CHESTER SPRINGS, PA 19475

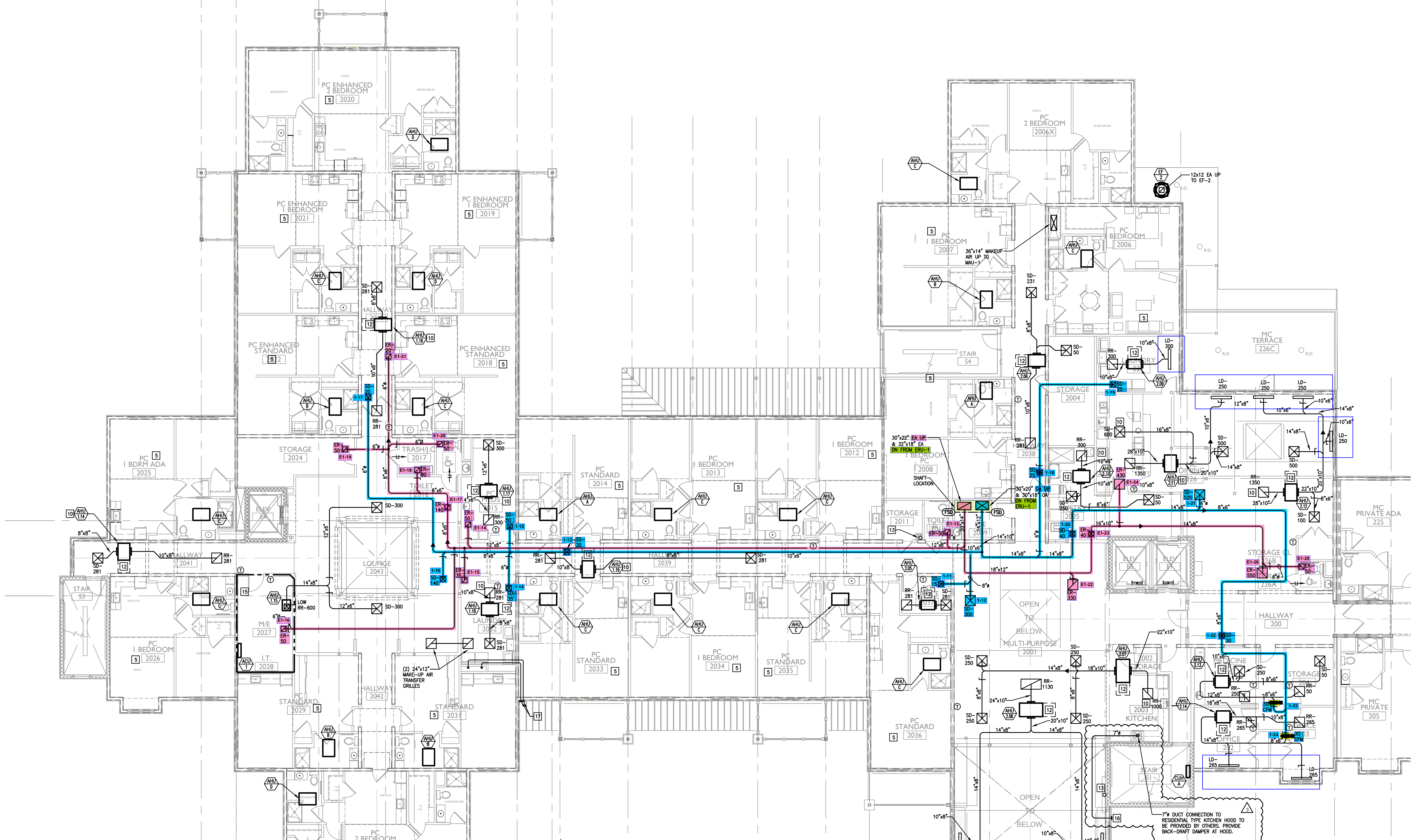
Construction Issue Date: 05/06/22
Drawn By: STK/GKG
Checked By: MW
Scale: AS NOTED

Sheet Name: FIRST FLOOR PLAN
Progress Prints: 05/06/2022 PERMIT/BID SET
Revisions:

MI.2



Sheet Name: SECOND FLOOR PLAN	Revisions:
Progress Prints: 05.06.2022 PERMIT/BD SET	▲
ADD: CONSTRUCTION SET 07.12.22	▲
REVISED: 08.22	▲
BULLETIN: 6.8.23	▲



PARTIAL SECOND FLOOR PLAN - MECHANICAL
 SCALE: 1/8"=1'-0"

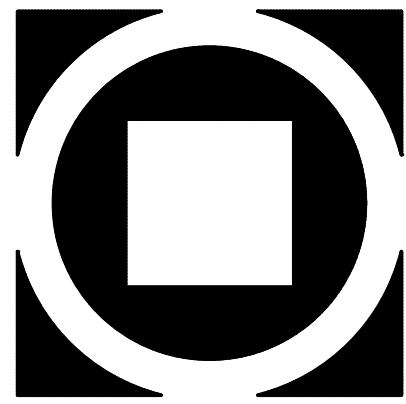
- CONSTRUCTION NOTES: (NOT ALL NOTES USED, REFER TO PLANS)
- ROUTE LAUNDRY EXHAUST FROM DRYER OUTLET TO SIDEWALL VENT. PROVIDE ANODIZED DRYER VENT W/ BACKDRIFT DAMPER, SIDEWALL TERMINATION KIT TO EQUAL X-VENT. COORDINATE FINISHES WITH ARCHITECT.
 - ROUTE EXHAUST FROM FAN OUTLET TO EXTERIOR WALL. PROVIDE ANODIZED WALL CAP WITH BIRDSCREEN. COLOR SELECTED BY ARCHITECT.
 - ROUTE EXHAUST FROM FAN OUTLET TO EXTERIOR WALL. PROVIDE ANODIZED WALL CAP WITH BIRDSCREEN. COLOR SELECTED BY ARCHITECT.
 - ROUTE REFRIGERANT PIPING FROM FREEZER/ REFRIGERATOR UP TO CONDENSER(S) ON ROOF PER MANUFACTURER'S REQUIREMENTS. CONDENSERS SHALL BE OUTDOOR, REMOTE MOUNTED, AND SHALL NOT REJECT HEAT TO THE SPACE.
 - REFER TO TYPICAL UNIT PLAN DRAWINGS ON SHEETS M2.1, M2.2, M2.3, AND M2.4 FOR EQUIPMENT LOCATIONS AND ASSOCIATED WORK IN THE RESIDENT UNITS.
 - COMBINATION FIRE AND SMOKE DAMPER. COORDINATE W/ EC AND FA CONTRACTORS IN ORDER TO INTEGRATE INTO SMOKE DETECTOR(S) AND FACP. CONTRACTOR SHALL INSTALL DAMPER WITH PROPER CLEARANCES AND ACCESS FOR MAINTENANCE. PROVIDE ACCESS PANELS (RATED) WHERE REQUIRED.
 - TYPE 1 COMMERCIAL KITCHEN HOOD GREASE DUCT WELDED STEEL W/ ZERO CLEARANCE WRAP FROM HOOD TO FAN INLET.
 - TYPE 2 DISHWASHER EXHAUST HOOD DUCT ALUMINUM FROM HOOD TO FAN INLET.
 - PROVIDE 18"x18" RECESSED FIRE RATED ACCESS PANEL W/ PERFORATED MIDDING FRAME. EQUAL TO ACUDOR FWC-5015 IN DRYWALL CEILING, AND FB-5066-10 IN WOOD CEILING. FINAL LOCATION SELECTED BY ARCHITECT AND OWNER DURING SHOP DRAWING PHASE OF PROJECT.

- PROVIDE FILTERED RETURN GRILLE, NO FILTERED REQUIRED AT FAN COIL. REFER TO DIFFUSER SCHEDULE FOR SIZING.
- PROVIDE 78"x64" O.A. LOUVER 23,000 CFM, 1" @ 1000 FPM BASED ON GREENHECK 'ESU-153' LOUVER PAINT IN COLOR SELECTED BY ARCHITECT.
- PROVIDE 30" CLEARANCE ON CONDUIT SIDE OF UNIT
- PROVIDE 6" VENT FROM FIRE PLACE TO ROOF. SIZING TO BE CONFIRMED BY THE MANUFACTURER PRIOR TO ROUGH IN.
- EXTEND DUCTWORK TO ROOF. REFER TO ROOF PLAN FOR CONTINUATION.
- NO DUCTWORK IS ALLOWED TO RUN ABOVE ELECTRICAL PANELS.
- SIDEWALL TERMINATION KIT TO EQUAL X-VENT. COORDINATE FINISHES WITH ARCHITECT.
- 4" DRYER EXHAUST DUCTS SHALL HAVE A SMOOTH INTERIOR FINISH AND SHALL BE CONSTRUCTED OF 26 GAUGE SHEET METAL. NO SCREWS ARE ALLOWED TO PROTRUDE THROUGH THE DUCT. VENT DRYER EXHAUST THROUGH SIDEWALL FOR FIRST AND SECOND FLOOR LOCATIONS, THRU ROOF FOR THIRD FLOOR LOCATIONS. SIDEWALL TERMINATION KIT TO EQUAL X-VENT (SINGLE/COMBINATION). PER DETAIL, PROVIDE DRYER WALL BOX, CLEAN OUT, & BOOSTER FAN WHERE REQUIRED) IN LAUNDRY ROOM.

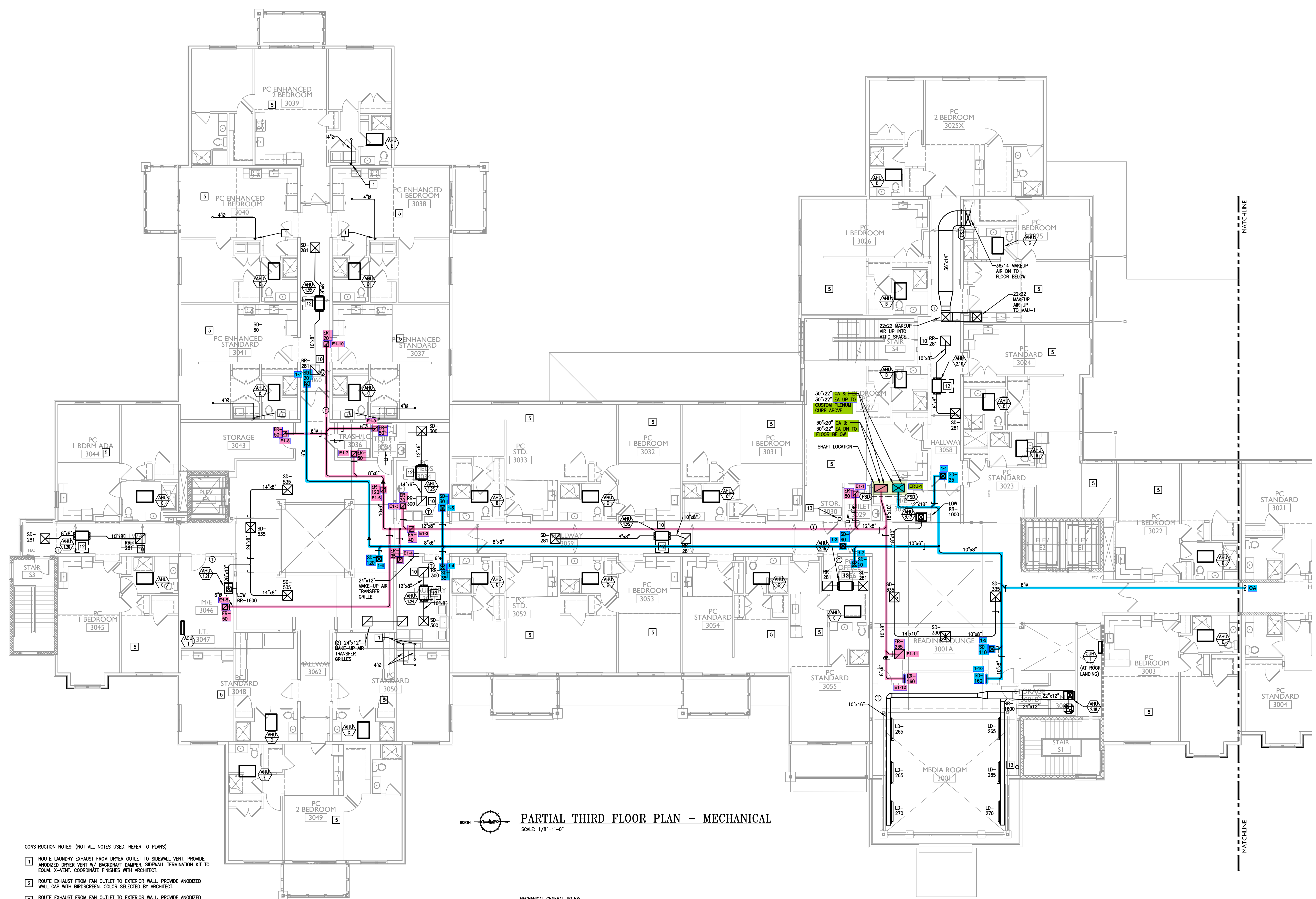
- MECHANICAL GENERAL NOTES:
- ALL DUCTWORK SIZES INDICATED ARE INSIDE DIMENSIONS UNLESS OTHERWISE NOTED.
 - DUCT SIZES INDICATED ON DRAWING ARE BASED AFTER THE LAST DIFFUSER AND/OR BRANCH TAKE-OFF.
 - CONTRACTOR TO PROVIDE A CLEAN OUT AT EVERY CHANGE IN DIRECTION OF A CONDENSATE LINE AND AT 50 FT. CENTERS.
 - RUN ALL CONDENSATE PIPING TO POINT OF DISCHARGE, PROVIDE REQUIRED AIR GAP AT DISCHARGE POINT, REFER TO PLANS & SPECIFICATIONS FOR SIZES AND REQUIREMENTS.
 - ALL DUCTWORK SERVING THE ENERGY RECOVERY UNIT SHALL BE MINIMAL 26 GAUGE SHEET METAL FROM THE ERU TO THE AIR DEVICE. NO FLEXIBLE DUCTWORK IS ALLOWED. THIS SHALL COMPLY WITH THE IBC 2015 717.5.4 FIRE PARTITIONS EXCEPTION #4.
 - COORDINATE FINAL THERMOSTAT LOCATIONS WITH ARCHITECT AND OWNER.
 - RECTANGULAR WEB OPENINGS SHALL BE PROVIDED IN THE LIGHT-GAUGE METAL TRUSS SYSTEM AS REQUIRED FOR MECHANICAL DUCTWORK RUNS. WEB OPENINGS IN ADJACENT TRUSSES SHALL BE ALIGNED IN ORDER TO PASS THROUGH THE TRUSSES IN A STRAIGHT LINE. THE MECHANICAL CONTRACTOR IS RESPONSIBLE FOR COORDINATING ALL REQUIRED DUCTWORK RUN PENETRATIONS WITH THE LIGHT-GAUGE METAL TRUSS MANUFACTURER, MECHANICAL ENGINEER, AND GENERAL CONTRACTOR.
 - EVERY DIFFUSER BRANCH DUCT SHALL HAVE A VOLUME DAMPER. ALL ENERGY RECOVERY DUCTWORK SHALL USE A CONSTANT AIR REGULATOR.
 - ALL FAN COLS SHALL HAVE FLEXIBLE CONNECTIONS ON SUPPLY AND RETURN. ALL DUCTWORK CONNECTIONS SHALL HAVE A SMOOTH TAPER DUCT CONNECTOR.
 - ALL EXHAUSTS AND VENT TERMINALS FROM NON-RESIDENTIAL SOURCES MUST BE LOCATED AT LEAST 10'-0" FROM FRESH AIR INTAKE TERMINALS AND OPERABLE PORTIONS OF ANY WINDOW.
 - ALL EXHAUSTS AND VENT TERMINALS FROM APARTMENTS MUST BE LOCATED AT LEAST 10'-0" FROM FRESH AIR INTAKE TERMINALS AND AT LEAST 3'-0" FROM ANY OPERABLE PORTION OF A WINDOW.
 - ANY DUCTWORK THAT RUNS OUTSIDE OF THE BUILDING ENVELOPE SHALL HAVE ADDITIONAL INSULATION, REFER TO THE INSULATION SPECIFICATION FOR FURTHER DETAIL.

THE DELIVERY OF THIS DRAWING SHOULD NOT BE CONSTRUED TO PROVIDE AN EXPRESS WARRANTY OR GUARANTEE TO ANYONE THAT THE DIMENSIONS AND DETAILS ARE EXACT OR TO INDICATE THAT THE USE OF THIS DRAWING IMPLIES THE REVIEW AND APPROVAL BY THE DESIGN PROFESSIONAL OF ANY FUTURE USE. ANY USE OF THIS INFORMATION WITHOUT THE WRITTEN APPROVAL BY THE DESIGN PROFESSIONAL IS AT THE SOLE RISK AND LIABILITY OF THE USER. THE DESIGN PROFESSIONAL RESERVES THE RIGHT TO REMOVE OUR PROFESSIONAL SEAL AND/OR TITLE BLOCK.

NOTICE
 THE SCHEDULES AND DRAWINGS REPRESENT ONLY CERTAIN REQUIREMENTS OF THE PROJECT. THERE ARE ADDITIONAL REQUIREMENTS IN THE SPECIFICATIONS BOOKLET WHICH THE CONTRACTOR IS BOUND TO PROVIDE. A SUPPLIER OR CONTRACTOR'S PRICING, WHICH IS BASED ONLY ON DRAWINGS OR SCHEDULES, MAY LEAVE IMPORTANT COSTS UNACCOUNTED FOR WHICH WILL ULTIMATELY BE THE CONTRACTOR OR SUPPLIER'S RESPONSIBILITY TO PROVIDE.



Sheet Name:	THIRD FLOOR PLAN																																		
Progress Prints:	05.06.2022 PERMIT/BID SET																																		
Revisions:	<table border="1"> <tr><td>1</td><td></td></tr> <tr><td>2</td><td></td></tr> <tr><td>3</td><td></td></tr> <tr><td>4</td><td></td></tr> <tr><td>5</td><td></td></tr> <tr><td>6</td><td></td></tr> <tr><td>7</td><td></td></tr> <tr><td>8</td><td></td></tr> <tr><td>9</td><td></td></tr> <tr><td>10</td><td></td></tr> <tr><td>11</td><td></td></tr> <tr><td>12</td><td></td></tr> <tr><td>13</td><td></td></tr> <tr><td>14</td><td></td></tr> <tr><td>15</td><td></td></tr> <tr><td>16</td><td></td></tr> <tr><td>17</td><td></td></tr> </table>	1		2		3		4		5		6		7		8		9		10		11		12		13		14		15		16		17	
1																																			
2																																			
3																																			
4																																			
5																																			
6																																			
7																																			
8																																			
9																																			
10																																			
11																																			
12																																			
13																																			
14																																			
15																																			
16																																			
17																																			



- CONSTRUCTION NOTES: (NOT ALL NOTES USED, REFER TO PLANS)
- ROUTE LAUNDRY EXHAUST FROM DRYER OUTLET TO SIDEWALL VENT. PROVIDE ANODIZED DRYER VENT W/ BACKDRIFT DAMPER, SIDEWALL TERMINATION KIT TO EQUAL X-VENT. COORDINATE FINISHES WITH ARCHITECT.
 - ROUTE EXHAUST FROM FAN OUTLET TO EXTERIOR WALL. PROVIDE ANODIZED WALL CAP WITH BIRDSCREEN. COLOR SELECTED BY ARCHITECT.
 - ROUTE EXHAUST FROM FAN OUTLET TO EXTERIOR WALL. PROVIDE ANODIZED WALL CAP WITH BIRDSCREEN. COLOR SELECTED BY ARCHITECT.
 - ROUTE REFRIGERANT PIPING FROM FREEZER/ REFRIGERATOR UP TO CONDENSER(S) ON ROOF PER MANUFACTURER'S REQUIREMENTS. CONDENSERS SHALL BE OUTDOOR, REMOTE MOUNTED, AND SHALL NOT REJECT HEAT TO THE SPACE.
 - REFER TO TYPICAL UNIT PLAN DRAWINGS ON SHEETS M2.1, M2.2, M2.3, AND M2.4 FOR EQUIPMENT LOCATIONS AND ASSOCIATED WORK IN THE RESIDENT UNITS.
 - COMBINATION FIRE AND SMOKE DAMPER. COORDINATE W/ EC AND FA CONTRACTORS IN ORDER TO INTEGRATE INTO SMOKE DETECTOR(S) AND FACP. CONTRACTOR SHALL INSTALL DAMPER WITH PROPER CLEARANCES AND ACCESS FOR MAINTENANCE. PROVIDE ACCESS PANELS (RATED) WHERE REQUIRED.
 - TYPE 1 COMMERCIAL KITCHEN HOOD GREASE DUCT WELDED STEEL W/ ZERO CLEARANCE WRAP FROM HOOD TO FAN INLET.
 - TYPE 2 DISHWASHER EXHAUST HOOD DUCT ALUMINUM FROM HOOD TO FAN INLET.
 - PROVIDE 18"x18" RECESSED FIRE RATED ACCESS PANEL W/ PERFORATED MOUNDING FRAME. EQUAL TO ACUDOR FWC-5015 IN DRYWALL CEILINGS, AND FB-5066-10 IN WOOD CEILINGS. FINAL LOCATION SELECTED BY ARCHITECT AND OWNER DURING SHOP DRAWING PHASE OF PROJECT.

- PROVIDE FILTERED RETURN GRILLE, NO FILTERED REQUIRED AT FAN COIL. REFER TO DIFFUSER SCHEDULE FOR SIZING.
- PROVIDE 78"x64" O.A. LOUVER 23,000 CFM, 1" @ 1000 FPM BASED ON GREENHECK "ESU-153" LOUVER PAINT IN COLOR SELECTED BY ARCHITECT.
- PROVIDE 30" CLEARANCE ON CONDUIT SIDE OF UNIT
- PROVIDE 6" VENT FROM FIRE PLACE TO ROOF. SIZING TO BE CONFIRMED BY THE MANUFACTURER PRIOR TO ROUGH IN.
- EXTEND DUCTWORK TO ROOF. REFER TO ROOF PLAN FOR CONTINUATION.
- NO DUCTWORK IS ALLOWED TO RUN ABOVE ELECTRICAL PANELS.
- SIDEWALL TERMINATION KIT TO EQUAL X-VENT. COORDINATE FINISHES WITH ARCHITECT.
- 4" DRYER EXHAUST DUCTS SHALL HAVE A SMOOTH INTERIOR FINISH AND SHALL BE CONSTRUCTED OF 26 GAUGE SHEET METAL. NO SCREWS ARE ALLOWED TO PROTRUDE THROUGH THE DUCT. VENT DRYER EXHAUST THROUGH SIDEWALL FOR FIRST AND SECOND FLOOR LOCATIONS, THRU ROOF FOR THIRD FLOOR LOCATIONS. SIDEWALL TERMINATION KIT TO EQUAL X-VENT (SINGLE/COMBINATION), PER DETAIL. PROVIDE DRYER WALL BOX, CLEAN OUT, & BOOSTER FAN WHERE REQUIRED) IN LAUNDRY ROOM.

PARTIAL THIRD FLOOR PLAN - MECHANICAL
 SCALE: 1/8"=1'-0"

- MECHANICAL GENERAL NOTES:
- ALL DUCTWORK SIZES INDICATED ARE INSIDE DIMENSIONS UNLESS OTHERWISE NOTED.
 - DUCT SIZES INDICATED ON DRAWING ARE BASED AFTER THE LAST DIFFUSER AND/OR BRANCH TAKE-OFF.
 - CONTRACTOR TO PROVIDE A CLEAN OUT AT EVERY CHANGE IN DIRECTION OF A CONDENSATE LINE AND AT 50 FT. CENTERS.
 - RUN ALL CONDENSATE PIPING TO POINT OF DISCHARGE, PROVIDE REQUIRED AIR GAP AT DISCHARGE POINT, REFER TO PLANS & SPECIFICATIONS FOR SIZES AND REQUIREMENTS.
 - ALL DUCTWORK SERVING THE ENERGY RECOVERY UNIT SHALL BE MINIMAL 26 GAUGE SHEET METAL FROM THE ERU TO THE AIR DEVICE. NO FLEXIBLE DUCTWORK IS ALLOWED. THIS SHALL COMPLY WITH THE IBC 2015 717.5.4 FIRE PARTITIONS EXCEPTION #4.
 - COORDINATE FINAL THERMOSTAT LOCATIONS WITH ARCHITECT AND OWNER.
 - RECTANGULAR WEB OPENINGS SHALL BE PROVIDED IN THE LIGHT-GAUGE METAL TRUSS SYSTEM AS REQUIRED FOR MECHANICAL DUCTWORK RUNS. WEB OPENINGS IN ADJACENT TRUSSES SHALL BE ALIGNED IN ORDER TO PASS THROUGH THE TRUSSES IN A STRAIGHT LINE. THE MECHANICAL CONTRACTOR IS RESPONSIBLE FOR COORDINATING ALL REQUIRED DUCTWORK RUN PENETRATIONS WITH THE LIGHT-GAUGE METAL TRUSS MANUFACTURER, MECHANICAL ENGINEER, AND GENERAL CONTRACTOR.
 - EVERY DIFFUSER BRANCH DUCT SHALL HAVE A VOLUME DAMPER. ALL ENERGY RECOVERY DUCTWORK SHALL USE A CONSTANT AIR REGULATOR.
 - ALL FAN COLS SHALL HAVE FLEXIBLE CONNECTIONS ON SUPPLY AND RETURN. ALL DUCTWORK CONNECTIONS SHALL HAVE A SMOOTH TAPER DUCT CONNECTOR.
 - ALL EXHAUSTS AND VENT TERMINALS FROM NON-RESIDENTIAL SOURCES MUST BE LOCATED AT LEAST 10'-0" FROM FRESH AIR INTAKE TERMINALS AND OPERABLE PORTIONS OF ANY WINDOW.
 - ALL EXHAUSTS AND VENT TERMINALS FROM APARTMENTS MUST BE LOCATED AT LEAST 10'-0" FROM FRESH AIR INTAKE TERMINALS AND AT LEAST 3'-0" FROM ANY OPERABLE PORTION OF A WINDOW.
 - ANY DUCTWORK THAT RUNS OUTSIDE OF THE BUILDING ENVELOPE SHALL HAVE ADDITIONAL INSULATION, REFER TO THE INSULATION SPECIFICATION FOR FURTHER DETAIL.

THE DELIVERY OF THIS DRAWING SHOULD NOT BE CONSTRUED TO PROVIDE AN EXPRESS WARRANTY OR GUARANTEE TO ANYONE THAT THE USE OF THIS DRAWING IMPLIES THE REVIEW AND APPROVAL BY THE DESIGN PROFESSIONAL OF ANY FUTURE USE. ANY USE OF THIS INFORMATION WITHOUT THE WRITTEN APPROVAL BY THE DESIGN PROFESSIONAL IS AT THE SOLE RISK AND LIABILITY OF THE USER. THE DESIGN PROFESSIONAL RESERVES THE RIGHT TO REMOVE OUR PROFESSIONAL SEAL AND/OR TITLE BLOCK.

NOTICE
 THE SCHEDULES AND DRAWINGS REPRESENT ONLY CERTAIN REQUIREMENTS OF THE PROJECT. THERE ARE ADDITIONAL REQUIREMENTS IN THE SPECIFICATIONS BOOKLET WHICH THE CONTRACTOR IS BOUND TO PROVIDE. A SUPPLIER OR CONTRACTOR'S PRICING, WHICH IS BASED ONLY ON DRAWINGS OR SCHEDULES, MAY LEAVE IMPORTANT COSTS UNACCOUNTED FOR WHICH WILL ULTIMATELY BE THE CONTRACTOR OR SUPPLIER'S RESPONSIBILITY TO PROVIDE.

