

**BASEMENT FLOOR PLAN**  
SCALE: 1/8"=1'-0"

- MECHANICAL GENERAL NOTES:**
1. ALL DUCTWORK SIZES INDICATED ARE INSIDE DIMENSIONS UNLESS OTHERWISE NOTED.
  2. DUCT SIZES INDICATED ON DRAWING ARE BASED AFTER THE LAST DIFFUSER AND/OR BRANCH TAKE-OFF.
  3. CONTRACTOR TO PROVIDE A CLEAN OUT AT EVERY CHANGE IN DIRECTION OF A CONDENSATE LINE AND AT 50 FT. CENTERS.
  4. RUN ALL CONDENSATE PIPING TO POINT OF DISCHARGE. PROVIDE REQUIRED AIR GAP AT DISCHARGE POINT, REFER TO PLANS & SPECIFICATIONS FOR SIZES AND REQUIREMENTS.
  5. ALL DUCTWORK SERVING THE ENERGY RECOVERY UNIT SHALL BE MINIMAL 26 GAUGE SHEET METAL FROM THE ERU TO THE AIR DEVICE. NO FLEXIBLE DUCTWORK IS ALLOWED. THIS SHALL COMPLY WITH THE IBC 2015 717.5.4 FIRE PARTITIONS EXCEPTION #4.
  6. COORDINATE FINAL THERMOSTAT LOCATIONS WITH ARCHITECT AND OWNER.
  7. RECTANGULAR WEB OPENINGS SHALL BE PROVIDED IN THE LIGHT-GUAGE METAL TRUSS SYSTEM AS REQUIRED FOR MECHANICAL DUCTWORK RUNS. WEB OPENINGS IN ADJACENT TRUSSES SHALL BE ALIGNED IN ORDER TO PASS THROUGH THE TRUSSES IN A STRAIGHT LINE. THE MECHANICAL CONTRACTOR IS RESPONSIBLE FOR COORDINATING ALL REQUIRED DUCTWORK FROM PENETRATIONS WITH THE LIGHT-GUAGE METAL TRUSS MANUFACTURER, MECHANICAL ENGINEER, AND GENERAL CONTRACTOR.
  8. EVERY DIFFUSER BRANCH DUCT SHALL HAVE A VOLUME DAMPER. ALL ENERGY RECOVERY DUCTWORK SHALL USE A CONSTANT AIR REGULATOR.
  9. ALL FAN COILS SHALL HAVE FLEXIBLE CONNECTIONS ON SUPPLY AND RETURN. ALL DUCTWORK CONNECTIONS SHALL HAVE A SMOOTH TAPER DUCT CONNECTOR.
  10. ALL EXHAUSTS AND VENT TERMINALS FROM NON-RESIDENTIAL SOURCES MUST BE LOCATED AT LEAST 10'-0" FROM FRESH AIR INTAKE TERMINALS AND OPERABLE PORTIONS OF ANY WINDOW.
  11. ALL EXHAUSTS AND VENT TERMINALS FROM APARTMENTS MUST BE LOCATED AT LEAST 10'-0" FROM FRESH AIR INTAKE TERMINALS AND AT LEAST 3'-0" FROM ANY OPERABLE PORTION OF A WINDOW.
  12. ANY DUCTWORK THAT RUNS OUTSIDE OF THE BUILDING ENVELOPE SHALL HAVE ADDITIONAL INSULATION, REFER TO THE INSULATION SPECIFICATION FOR FURTHER DETAIL.

- CONSTRUCTION NOTES: (NOT ALL NOTES USED, REFER TO PLANS)**
1. ROUTE LAUNDRY EXHAUST FROM DRYER OUTLET TO SIDEWALL VENT. PROVIDE ANODIZED DRYER VENT W/ BACKDRAFT DAMPER. SIDEWALL TERMINATION KIT TO EQUAL X-VENT. COORDINATE FINISHES WITH ARCHITECT.
  2. ROUTE EXHAUST FROM FAN OUTLET TO EXTERIOR WALL. PROVIDE ANODIZED WALL CAP WITH BIRDSCREEN. COLOR SELECTED BY ARCHITECT.
  3. ROUTE EXHAUST FROM FAN OUTLET TO EXTERIOR WALL. PROVIDE ANODIZED WALL CAP WITH BIRDSCREEN. COLOR SELECTED BY ARCHITECT.
  4. ROUTE REFRIGERANT PIPING FROM FREEZER/ REFRIGERATOR UP TO CONDENSERS ON ROOF PER MANUFACTURER'S REQUIREMENTS. CONDENSERS SHALL BE OUTDOOR, REMOTE MOUNTED, AND SHALL NOT REJECT HEAT TO THE SPACE.
  5. REFER TO TYPICAL UNIT PLAN DRAWINGS ON SHEETS M2.1, M2.2, M2.3, AND M2.4 FOR EQUIPMENT LOCATIONS AND ASSOCIATED WORK IN THE RESIDENT UNITS.
  6. COMBINATION FIRE AND SMOKE DAMPER. COORDINATE W/ EC AND FA CONTRACTORS IN ORDER TO INTEGRATE INTO SMOKE DETECTOR(S) AND FACP. CONTRACTOR SHALL INSTALL DAMPER WITH PROPER CLEARANCES AND ACCESS FOR MAINTENANCE. PROVIDE ACCESS PANELS (RATED) WHERE REQUIRED.
  7. TYPE 1 COMMERCIAL KITCHEN HOOD GREASE DUCT WELDED STEEL W/ ZERO CLEARANCE WRAP FROM HOOD TO FAN INLET.
  8. TYPE 2 DISHWASHER EXHAUST HOOD DUCT ALUMINUM FROM HOOD TO FAN INLET.
  9. PROVIDE 18"x18" RECESSED FIRE RATED ACCESS PANEL W/ PERFORATED MADING FRAME EQUAL TO ACJORDR FNC-5015 IN DRYWALL CEILING, AND FB-5060-TD IN WOOD CEILING. FINAL LOCATION SELECTED BY ARCHITECT AND OWNER DURING SHOP DRAWING PHASE OF PROJECT.

10. PROVIDE FILTERED RETURN GRILLE. NO FILTERED REQUIRED AT FAN COIL. REFER TO DIFFUSER SCHEDULE FOR SIZING.
11. PROVIDE 78"x64" O.A. LOUVER 23,000 CFM, 1" @ 1000 FPM, BASED ON GREENHECK TESU-153" LOUVER PAINT IN COLOR SELECTED BY ARCHITECT.
12. PROVIDE 30" CLEARANCE ON CONDUIT SIDE OF UNIT
13. PROVIDE 6" VENT FROM FIRE PLACE TO ROOF. SIZING TO BE CONFIRMED BY THE MANUFACTURER PRIOR TO ROUGH IN.
14. EXTEND DUCTWORK TO ROOF. REFER TO ROOF PLAN FOR CONTINUATION.
15. NO DUCTWORK IS ALLOWED TO RUN ABOVE ELECTRICAL PANELS.
16. SIDEWALL TERMINATION KIT TO EQUAL X-VENT. COORDINATE FINISHES WITH ARCHITECT.
17. 4" DRYER EXHAUST DUCTS SHALL HAVE A SMOOTH INTERIOR FINISH AND SHALL BE CONSTRUCTED OF 26 GAUGE SHEET METAL. NO SCREWS ARE ALLOWED TO PROTRUDE THROUGH THE DUCT. VENT DRYER EXHAUST THROUGH SIDEWALL FOR FIRST AND SECOND FLOOR LOCATIONS, THRU ROOF FOR THIRD FLOOR LOCATIONS. SIDEWALL TERMINATION KIT TO EQUAL X-VENT (SINGLE/COMBINATION). PER DETAIL, PROVIDE DRYER WALL BOX, CLEAN OUT, & BOOSTER FAN (WHERE REQUIRED) IN LAUNDRY ROOM.

THE DELIVERY OF THIS DRAWING SHOULD NOT BE CONSTRUED TO PROVIDE AN EXPRESS WARRANTY OR GUARANTEE TO ANYONE THAT ALL THE DIMENSIONS AND DETAILS ARE EXACT OR TO INDICATE THAT THE USE OF THIS DRAWING IMPLIES THE REVIEW AND APPROVAL BY THE DESIGN PROFESSIONAL OF ANY FUTURE USE. ANY USE OF THIS INFORMATION WITHOUT THE WRITTEN APPROVAL BY THE DESIGN PROFESSIONAL IS AT THE SOLE RISK AND LIABILITY OF THE USER. THE DESIGN PROFESSIONAL RESERVES THE RIGHT TO REMOVE OUR PROFESSIONAL SEAL AND/OR TITLE BLOCK.

NOTICE  
THE SCHEDULES AND DRAWINGS REPRESENT ONLY CERTAIN REQUIREMENTS OF THE PROJECT. THERE ARE ADDITIONAL REQUIREMENTS IN THE SPECIFICATIONS BOOKLET WHICH THE CONTRACTOR IS BOUND TO PROVIDE. A SUPPLIER OR CONTRACTOR'S PRICING, WHICH IS BASED ONLY ON DRAWINGS OR SCHEDULES, MAY LEAVE IMPORTANT COSTS UNACCOUNTED FOR WHICH WILL ULTIMATELY BE THE CONTRACTOR OR SUPPLIER'S RESPONSIBILITY TO PROVIDE.

**KIMMEL BOGRETTE**  
Architecture + Site  
482 Norriswood Road, Suite 200  
Blue Bell, PA 19422  
Phone: 610.834.7805  
Facsimile: 610.834.7815  
© COPYRIGHT 2018 KIMMEL BOGRETTE ARCHITECTURE + SITE, INC. ALL RIGHTS RESERVED.

**McHUGH**  
ENGINEERING ASSOCIATES INC.  
1900 Parkway Drive, Suite 100, Blue Bell, PA 19422  
1900 Parkway Drive, Suite 100, Blue Bell, PA 19422  
www.mchughinc.com  
202401009

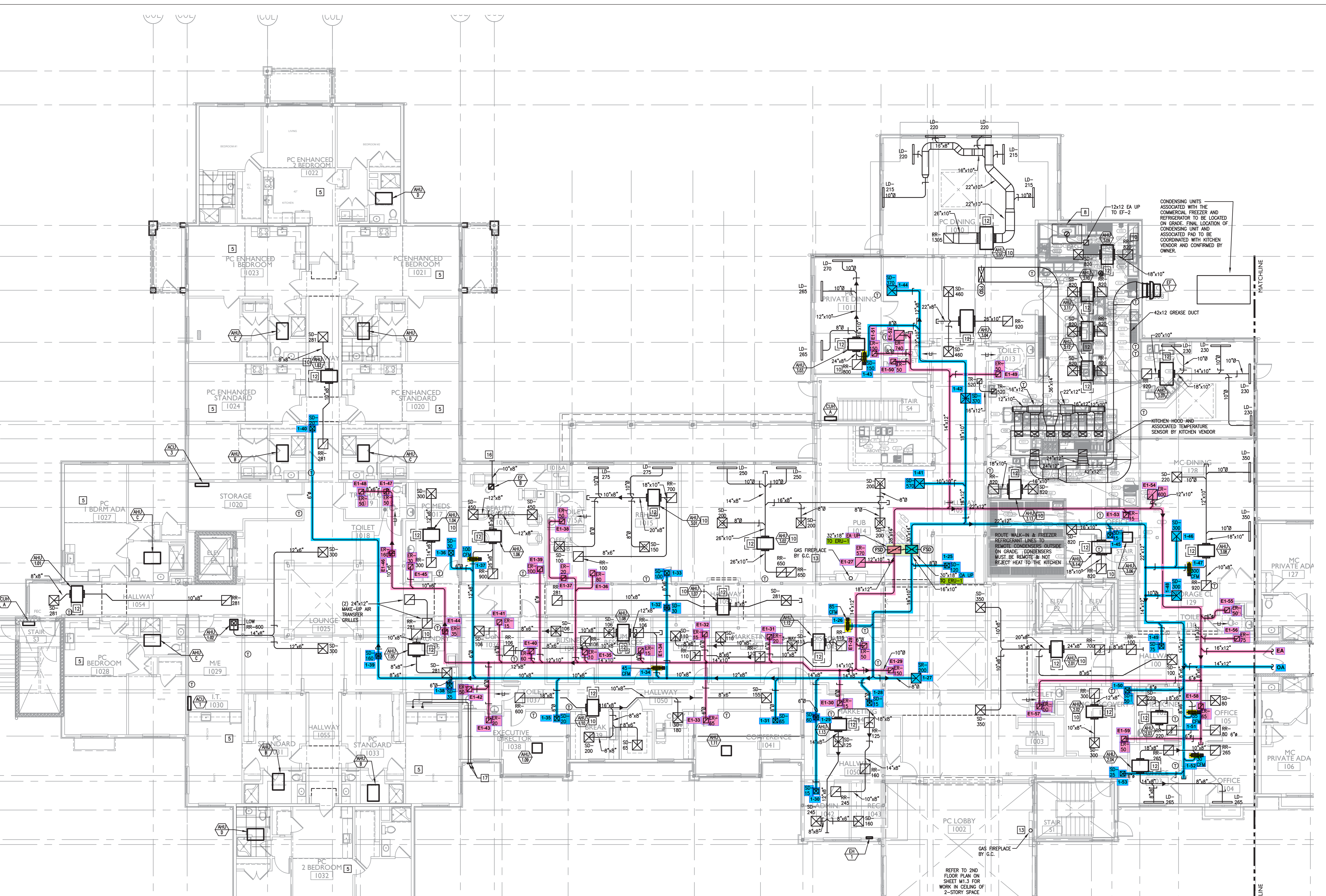
**FIELD STONE @ CHESTER SPRINGS**  
**ASSISTED LIVING FACILITY**  
145 BYERS RD  
CHESTER SPRINGS, PA 19475

Construction Issue Date:	Drawn By: STK/G/K/G	Checked By: MW
Scale: AS NOTED		

Sheet Name: BASEMENT FLOOR PLAN

Progress Prints:  
05.06.2022 PERMIT/BID SET  
001 CONSTRUCTION SET 07.1.22  
REVISIONS:  
REVISIONS:  
REVISIONS:  
REVISIONS:

MI.0



- CONSTRUCTION NOTES: (NOT ALL NOTES USED, REFER TO PLANS)
- ROUTE LAUNDRY EXHAUST FROM DRYER OUTLET TO SIDEWALL VENT. PROVIDE ANODIZED DRYER VENT W/ BACKDRAFT DAMPER. SIDEWALL TERMINATION KIT TO EQUAL X-VENT. COORDINATE FINISHES WITH ARCHITECT.
  - ROUTE EXHAUST FROM FAN OUTLET TO EXTERIOR WALL. PROVIDE ANODIZED WALL CAP WITH BIRDSCREEN. COLOR SELECTED BY ARCHITECT.
  - ROUTE EXHAUST FROM FAN OUTLET TO EXTERIOR WALL. PROVIDE ANODIZED WALL CAP WITH BIRDSCREEN. COLOR SELECTED BY ARCHITECT.
  - ROUTE RESTAURANT PIPING FROM FREEZER/ REFRIGERATOR UP TO CONDENSERS ON ROOF PER MANUFACTURER'S REQUIREMENTS. CONDENSERS SHALL BE OUTDOOR, REMOTE MOUNTED, AND SHALL NOT REJECT HEAT TO THE SPACE.
  - REFER TO TYPICAL UNIT PLAN DRAWINGS ON SHEETS M2.1, M2.2, M2.3, AND M2.4, FOR EQUIPMENT LOCATIONS AND ASSOCIATED WORK IN THE RESIDENT UNITS.
  - COMBINATION FIRE AND SMOKE DAMPER. COORDINATE W/ EC AND FA CONTRACTORS IN ORDER TO INTEGRATE INTO SMOKE DETECTOR(S) AND PACK. CONTRACTOR SHALL INSTALL DAMPER WITH PROPER CLEARANCES AND ACCESS FOR MAINTENANCE. PROVIDE ACCESS PANELS (RATED) WHERE REQUIRED.
  - TYPE 1 COMMERCIAL KITCHEN HOOD GREASE DUCT WELDED STEEL W/ ZERO CLEARANCE WRAP FROM HOOD TO FAN INLET.
  - TYPE 2 DISHWASHER EXHAUST HOOD DUCT ALUMINUM FROM HOOD TO FAN INLET.
  - PROVIDE 18"x18" RECESSED FIRE RATED ACCESS PANEL W/ PERFORATED MUDRING FRAME. EQUAL TO ACQUOR FWC-5015 IN DRYWALL CEILINGS, AND FB-5060-12 IN WOOD CEILINGS. FINAL LOCATION SELECTED BY ARCHITECT AND OWNER DURING SHOP DRAWING PHASE OF PROJECT.
  - PROVIDE FILTERED RETURN GRILLE. NO FILTERED REQUIRED AT FAN COIL. REFER TO DIFFUSER SCHEDULE FOR SIZING.
  - PROVIDE 78"x64" O.A. LOUVER 23,000 CFM, 1" Ø 1000 FPM. BASED ON GREENHECK TSU-153" LOUVER PAINT IN COLOR SELECTED BY ARCHITECT.
  - PROVIDE 30" CLEARANCE ON CONDUIT SIDE OF UNIT.
  - PROVIDE 6" VENT FROM FIRE PLACE TO ROOF. SIZING TO BE CONFIRMED BY THE MANUFACTURER PRIOR TO ROUGH IN.
  - EXTEND DUCTWORK TO ROOF. REFER TO ROOF PLAN FOR CONTINUATION.
  - NO DUCTWORK IS ALLOWED TO RUN ABOVE ELECTRICAL PANELS.
  - SIDEWALL TERMINATION KIT TO EQUAL X-VENT. COORDINATE FINISHES WITH ARCHITECT.
  - 4" DRYER EXHAUST DUCTS SHALL HAVE A SMOOTH INTERIOR FINISH AND SHALL BE CONSTRUCTED OF 26 GAUGE SHEET METAL. NO SCREWS ARE ALLOWED TO PROTRUDE THROUGH THE DUCT. ROOF DRYER EXHAUST THROUGH SIDEWALL FOR FIRST AND SECOND FLOOR LOCATIONS, THRU ROOF FOR THIRD FLOOR LOCATIONS. SIDEWALL TERMINATION KIT TO EQUAL X-VENT (SINGLE/COMBINATION). PER DETAIL. PROVIDE DRYER WALL BOX, CLEAN OUT, & BOOSTER FAN WHERE REQUIRED IN LAUNDRY ROOM.

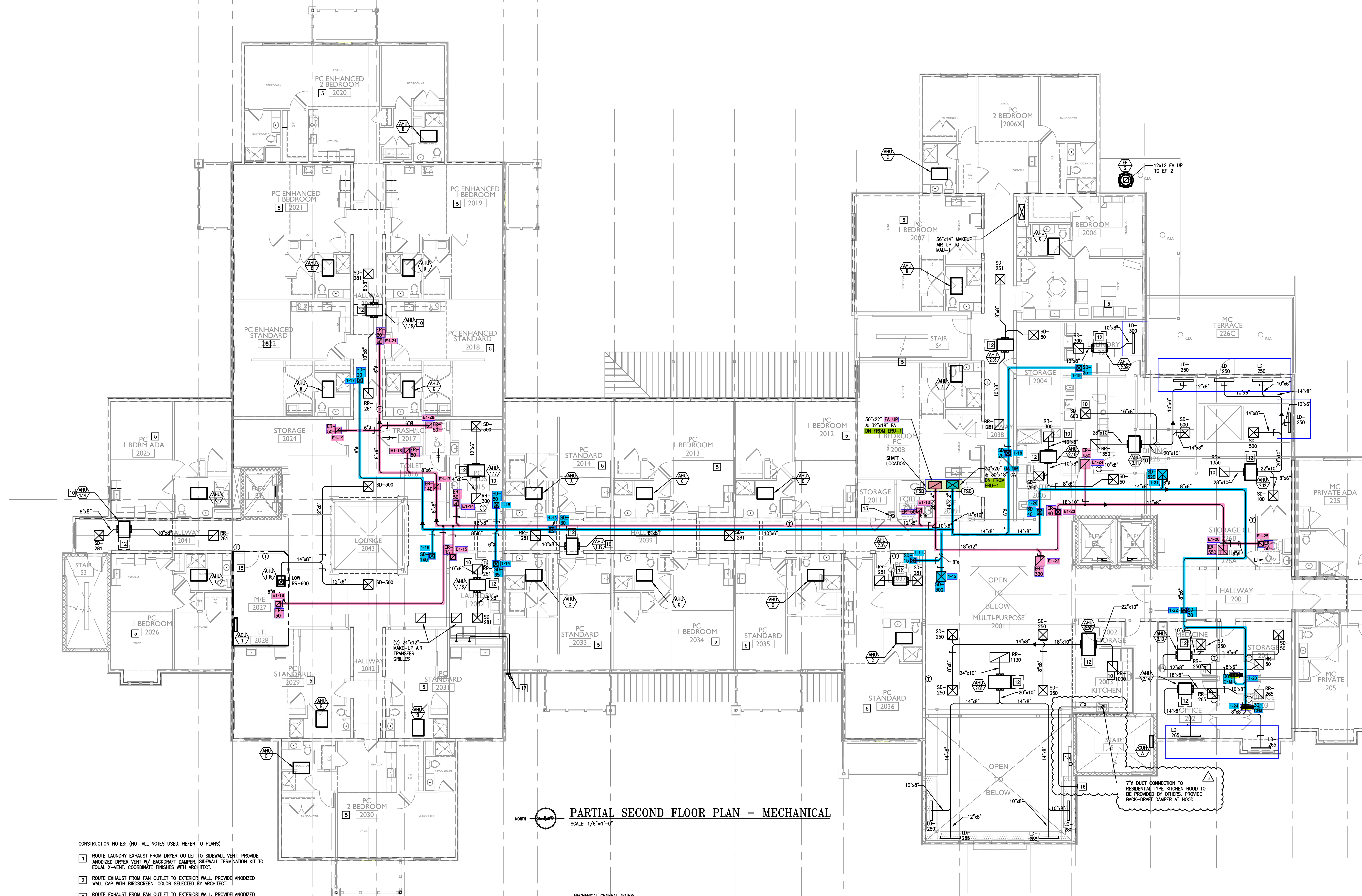
**PARTIAL FIRST FLOOR PLAN - MECHANICAL**  
 SCALE: 1/8"=1'-0"

- MECHANICAL GENERAL NOTES:
- ALL DUCTWORK SIZES INDICATED ARE INSIDE DIMENSIONS UNLESS OTHERWISE NOTED.
  - DUCT SIZES INDICATED ON DRAWING ARE BASED AFTER THE LAST DIFFUSER AND/OR BRANCH TAKE-OFF.
  - CONTRACTOR TO PROVIDE A CLEAN OUT AT EVERY CHANGE IN DIRECTION OF A CONDENSATE LINE AND AT 50 FT. CENTERS.
  - RUN ALL CONDENSATE PIPING TO POINT OF DISCHARGE. PROVIDE REQUIRED AIR DAP AT DISCHARGE POINT. REFER TO PLANS & SPECIFICATIONS FOR SIZES AND REQUIREMENTS.
  - ALL DUCTWORK SERVING THE ENERGY RECOVERY UNIT SHALL BE MINIMAL 26 GAUGE SHEET METAL FROM THE ERU TO THE AIR DEVICE. NO FLEXIBLE DUCTWORK IS ALLOWED. THIS SHALL COMPLY WITH THE IBC 2015 717.5.4 FIRE PARTITIONS EXCEPTION #4.
  - COORDINATE FINAL THERMOSTAT LOCATIONS WITH ARCHITECT AND OWNER.
  - RECTANGULAR WEB OPENINGS SHALL BE PROVIDED IN THE LIGHT-GAUGE METAL TRUSS SYSTEM AS REQUIRED FOR MECHANICAL DUCTWORK RUNS. WEB OPENINGS IN ADJACENT TRUSSES SHALL BE ALIGNED IN ORDER TO PASS THROUGH THE TRUSSES IN A STRAIGHT LINE. THE MECHANICAL CONTRACTOR IS RESPONSIBLE FOR COORDINATING ALL REQUIRED DUCTWORK RUN PENETRATIONS WITH THE LIGHT-GAUGE METAL TRUSS MANUFACTURER, MECHANICAL ENGINEER, AND GENERAL CONTRACTOR.
  - EVERY DIFFUSER BRANCH DUCT SHALL HAVE A VOLUME DAMPER. ALL ENERGY RECOVERY DUCTWORK SHALL USE A CONSTANT AIR REGULATOR.
  - ALL FAN COILS SHALL HAVE FLEXIBLE CONNECTIONS ON SUPPLY AND RETURN. ALL DUCTWORK CONNECTIONS SHALL HAVE A SMOOTH TAPER DUCT CONNECTOR.
  - ALL EXHAUSTS AND VENT TERMINALS FROM NON-RESIDENTIAL SOURCES MUST BE LOCATED AT LEAST 10'-0" FROM FRESH AIR INTAKE TERMINALS AND OPERABLE PORTIONS OF ANY WINDOW.
  - ALL EXHAUSTS AND VENT TERMINALS FROM APARTMENTS MUST BE LOCATED AT LEAST 10'-0" FROM FRESH AIR INTAKE TERMINALS AND AT LEAST 3'-0" FROM ANY OPERABLE PORTION OF A WINDOW.
  - ANY DUCTWORK THAT RUNS OUTSIDE OF THE BUILDING ENVELOPE SHALL HAVE ADDITIONAL INSULATION. REFER TO THE INSULATION SPECIFICATION FOR FURTHER DETAIL.

THE DELIVERY OF THIS DRAWING SHOULD NOT BE CONSTRUED TO PROVIDE AN EXPRESS WARRANTY OR GUARANTEE TO ANYONE THAT ALL THE DIMENSIONS AND DETAILS ARE EXACT OR TO INDICATE THAT THE USE OF THIS DRAWING IMPLIES THE REVIEW AND APPROVAL BY THE DESIGN PROFESSIONAL OF ANY FUTURE USE. ANY USE OF THIS INFORMATION WITHOUT THE WRITTEN APPROVAL BY THE DESIGN PROFESSIONAL IS AT THE SOLE RISK AND LIABILITY OF THE USER. THE DESIGN PROFESSIONAL RESERVES THE RIGHT TO REMOVE OUR PROFESSIONAL SEAL AND/OR TITLE BLOCK.

NOTICE  
 THE SCHEDULES AND DRAWINGS REPRESENT ONLY CERTAIN REQUIREMENTS OF THE PROJECT. THERE ARE ADDITIONAL REQUIREMENTS IN THE SPECIFICATIONS BOOKLET WHICH THE CONTRACTOR IS BOUND TO PROVIDE. A SUPPLIER OR CONTRACTOR'S PRICING, WHICH IS BASED ONLY ON DRAWINGS OR SCHEDULES, MAY LEAVE IMPORTANT COSTS UNACCOUNTED FOR WHICH WILL ULTIMATELY BE THE CONTRACTOR OR SUPPLIER'S RESPONSIBILITY TO PROVIDE.





**PARTIAL SECOND FLOOR PLAN - MECHANICAL**  
SCALE: 1/8"=1'-0"

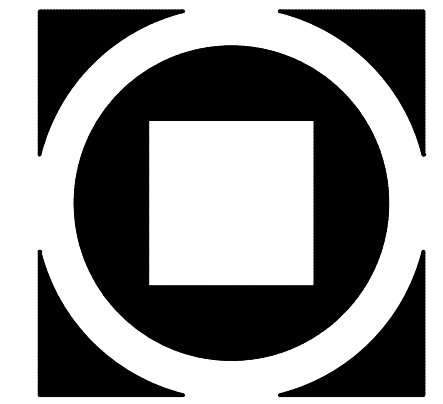
- CONSTRUCTION NOTES: (NOT ALL NOTES USED, REFER TO PLANS)**
- 1 ROUTE LAUNDRY EXHAUST FROM DRYER OUTLET TO SIDEWALL VENT. PROVIDE ANODIZED DRYER VENT W/ BACKDRIFT DAMPER, SIDEWALL TERMINATION KIT TO EQUAL X-VENT. COORDINATE FINISHES WITH ARCHITECT.
  - 2 ROUTE EXHAUST FROM FAN OUTLET TO EXTERIOR WALL. PROVIDE ANODIZED WALL CAP WITH BIRDSCREEN. COLOR SELECTED BY ARCHITECT.
  - 3 ROUTE EXHAUST FROM FAN OUTLET TO EXTERIOR WALL. PROVIDE ANODIZED WALL CAP WITH BIRDSCREEN. COLOR SELECTED BY ARCHITECT.
  - 4 ROUTE REFRIGERANT PIPING FROM FREEZER/ REFRIGERATOR UP TO CONDENSER(S) ON ROOF PER MANUFACTURER'S REQUIREMENTS. CONDENSERS SHALL BE OUTDOOR, REMOTE MOUNTED, AND SHALL NOT REJECT HEAT TO THE SPACE.
  - 5 REFER TO TYPICAL UNIT PLAN DRAWINGS ON SHEETS M2.1, M2.2, M2.3, AND M2.4 FOR EQUIPMENT LOCATIONS AND ASSOCIATED WORK IN THE RESIDENT UNITS.
  - 6 COMBINATION FIRE AND SMOKE DAMPER. COORDINATE W/ EC AND FA CONTRACTORS IN ORDER TO INTEGRATE INTO SMOKE DETECTOR(S) AND FACP. CONTRACTOR SHALL INSTALL DAMPER WITH PROPER CLEARANCES AND ACCESS FOR MAINTENANCE. PROVIDE ACCESS PANELS (RATED) WHERE REQUIRED.
  - 7 TYPE 1 COMMERCIAL KITCHEN HOOD GREASE DUCT WELDED STEEL W/ ZERO CLEARANCE WRAP FROM HOOD TO FAN INLET.
  - 8 TYPE 2 DISHWASHER EXHAUST HOOD DUCT ALUMINUM FROM HOOD TO FAN INLET.
  - 9 PROVIDE 18"x18" RECESSED FIRE RATED ACCESS PANEL W/ PERFORATED MIDDING FRAME. EQUAL TO ACQUOR FWC-5015 IN DRYWALL CEILING, AND FB-5066-10 IN WOOD CEILING. FINAL LOCATION SELECTED BY ARCHITECT AND OWNER DURING SHOP DRAWING PHASE OF PROJECT.

- 10 PROVIDE FILTERED RETURN GRILLE, NO FILTERED REQUIRED AT FAN COIL. REFER TO DIFFUSER SCHEDULE FOR SIZING.
- 11 PROVIDE 78"x64" O.A. LOUVER 23,000 CFM, 1" @ 1000 FPM BASED ON GREENHECK "ESJ-153" LOUVER PAINT IN COLOR SELECTED BY ARCHITECT.
- 12 PROVIDE 30" CLEARANCE ON CONDUIT SIDE OF UNIT
- 13 PROVIDE 6" VENT FROM FIRE PLACE TO ROOF. SIZING TO BE CONFIRMED BY THE MANUFACTURER PRIOR TO ROUGH IN.
- 14 EXTEND DUCTWORK TO ROOF. REFER TO ROOF PLAN FOR CONTINUATION.
- 15 NO DUCTWORK IS ALLOWED TO RUN ABOVE ELECTRICAL PANELS.
- 16 SIDEWALL TERMINATION KIT TO EQUAL X-VENT. COORDINATE FINISHES WITH ARCHITECT.
- 17 4" DRYER EXHAUST DUCTS SHALL HAVE A SMOOTH INTERIOR FINISH AND SHALL BE CONSTRUCTED OF 26 GAUGE SHEET METAL. NO SCREWS ARE ALLOWED TO PROTRUDE THROUGH THE DUCT. VENT DRYER EXHAUST THROUGH SIDEWALL FOR FIRST AND SECOND FLOOR LOCATIONS, THRU ROOF FOR THIRD FLOOR LOCATIONS. SIDEWALL TERMINATION KIT TO EQUAL X-VENT (SINGLE/COMBINATION), PER DETAIL. PROVIDE DRYER WALL BOX, CLEAN OUT, & BOOSTER FAN WHERE REQUIRED IN LAUNDRY ROOM.


- MECHANICAL GENERAL NOTES:**
1. ALL DUCTWORK SIZES INDICATED ARE INSIDE DIMENSIONS UNLESS OTHERWISE NOTED.
  2. DUCT SIZES INDICATED ON DRAWING ARE BASED AFTER THE LAST DIFFUSER AND/OR BRANCH TAKE-OFF.
  3. CONTRACTOR TO PROVIDE A CLEAN OUT AT EVERY CHANGE IN DIRECTION OF A CONDENSATE LINE AND AT 50 FT. CENTERS.
  4. RUN ALL CONDENSATE PIPING TO POINT OF DISCHARGE, PROVIDE REQUIRED AIR GAP AT DISCHARGE POINT, REFER TO PLANS & SPECIFICATIONS FOR SIZES AND REQUIREMENTS.
  5. ALL DUCTWORK SERVING THE ENERGY RECOVERY UNIT SHALL BE MINIMAL 26 GAUGE SHEET METAL FROM THE ERU TO THE AIR DEVICE. NO FLEXIBLE DUCTWORK IS ALLOWED. THIS SHALL COMPLY WITH THE IBC 2015 717.5.4 FIRE PARTITIONS EXCEPTION #4.
  6. COORDINATE FINAL THERMOSTAT LOCATIONS WITH ARCHITECT AND OWNER.
  7. RECTANGULAR WEB OPENINGS SHALL BE PROVIDED IN THE LIGHT-GAUGE METAL TRUSS SYSTEM AS REQUIRED FOR MECHANICAL DUCTWORK RUNS. WEB OPENINGS IN ADJACENT TRUSSES SHALL BE ALIGNED IN ORDER TO PASS THROUGH THE TRUSSES IN A STRAIGHT LINE. THE MECHANICAL CONTRACTOR IS RESPONSIBLE FOR COORDINATING ALL REQUIRED DUCTWORK RUN PENETRATIONS WITH THE LIGHT-GAUGE METAL TRUSS MANUFACTURER, MECHANICAL ENGINEER, AND GENERAL CONTRACTOR.
  8. EVERY DIFFUSER BRANCH DUCT SHALL HAVE A VOLUME DAMPER. ALL ENERGY RECOVERY DUCTWORK SHALL USE A CONSTANT AIR REGULATOR.
  9. ALL FAN COLS SHALL HAVE FLEXIBLE CONNECTIONS ON SUPPLY AND RETURN. ALL DUCTWORK CONNECTIONS SHALL HAVE A SMOOTH TAPER DUCT CONNECTOR.
  10. ALL EXHAUSTS AND VENT TERMINALS FROM NON-RESIDENTIAL SOURCES MUST BE LOCATED AT LEAST 10'-0" FROM FRESH AIR INTAKE TERMINALS AND OPERABLE PORTIONS OF ANY WINDOW.
  11. ALL EXHAUSTS AND VENT TERMINALS FROM APARTMENTS MUST BE LOCATED AT LEAST 10'-0" FROM FRESH AIR INTAKE TERMINALS AND AT LEAST 3'-0" FROM ANY OPERABLE PORTION OF A WINDOW.
  12. ANY DUCTWORK THAT RUNS OUTSIDE OF THE BUILDING ENVELOPE SHALL HAVE ADDITIONAL INSULATION, REFER TO THE INSULATION SPECIFICATION FOR FURTHER DETAIL.

**NOTICE**  
THE DELIVERY OF THIS DRAWING SHOULD NOT BE CONSTRUED TO PROVIDE AN EXPRESS WARRANTY OR GUARANTEE TO ANYONE THAT THE DIMENSIONS AND DETAILS ARE EXACT OR TO INDICATE THAT THE USE OF THIS DRAWING IMPLIES THE REVIEW AND APPROVAL BY THE DESIGN PROFESSIONAL OF ANY FUTURE USE. ANY USE OF THIS INFORMATION WITHOUT THE WRITTEN APPROVAL BY THE DESIGN PROFESSIONAL IS AT THE SOLE RISK AND LIABILITY OF THE USER. THE DESIGN PROFESSIONAL RESERVES THE RIGHT TO REMOVE OUR PROFESSIONAL SEAL AND/OR TITLE BLOCK.

**NOTICE**  
THE SCHEDULES AND DRAWINGS REPRESENT ONLY CERTAIN REQUIREMENTS OF THE PROJECT. THERE ARE ADDITIONAL REQUIREMENTS IN THE SPECIFICATIONS BOOKLET WHICH THE CONTRACTOR IS BOUND TO PROVIDE. A SUPPLIER OR CONTRACTOR'S PRICING, WHICH IS BASED ONLY ON DRAWINGS OR SCHEDULES, MAY LEAVE IMPORTANT COSTS UNACCOUNTED FOR WHICH WILL ULTIMATELY BE THE CONTRACTOR OR SUPPLIER'S RESPONSIBILITY TO PROVIDE.



**KIMMEL BOGRETTE**  
Architecture + Site  
482 Norristown Road, Suite 200  
Blue Bell, PA 19422  
Phone: 610.834.7805  
Facsimile: 610.834.7815  
© COPYRIGHT 2018 KIMMEL BOGRETTE ARCHITECTURE + SITE, INC. ALL RIGHTS RESERVED.



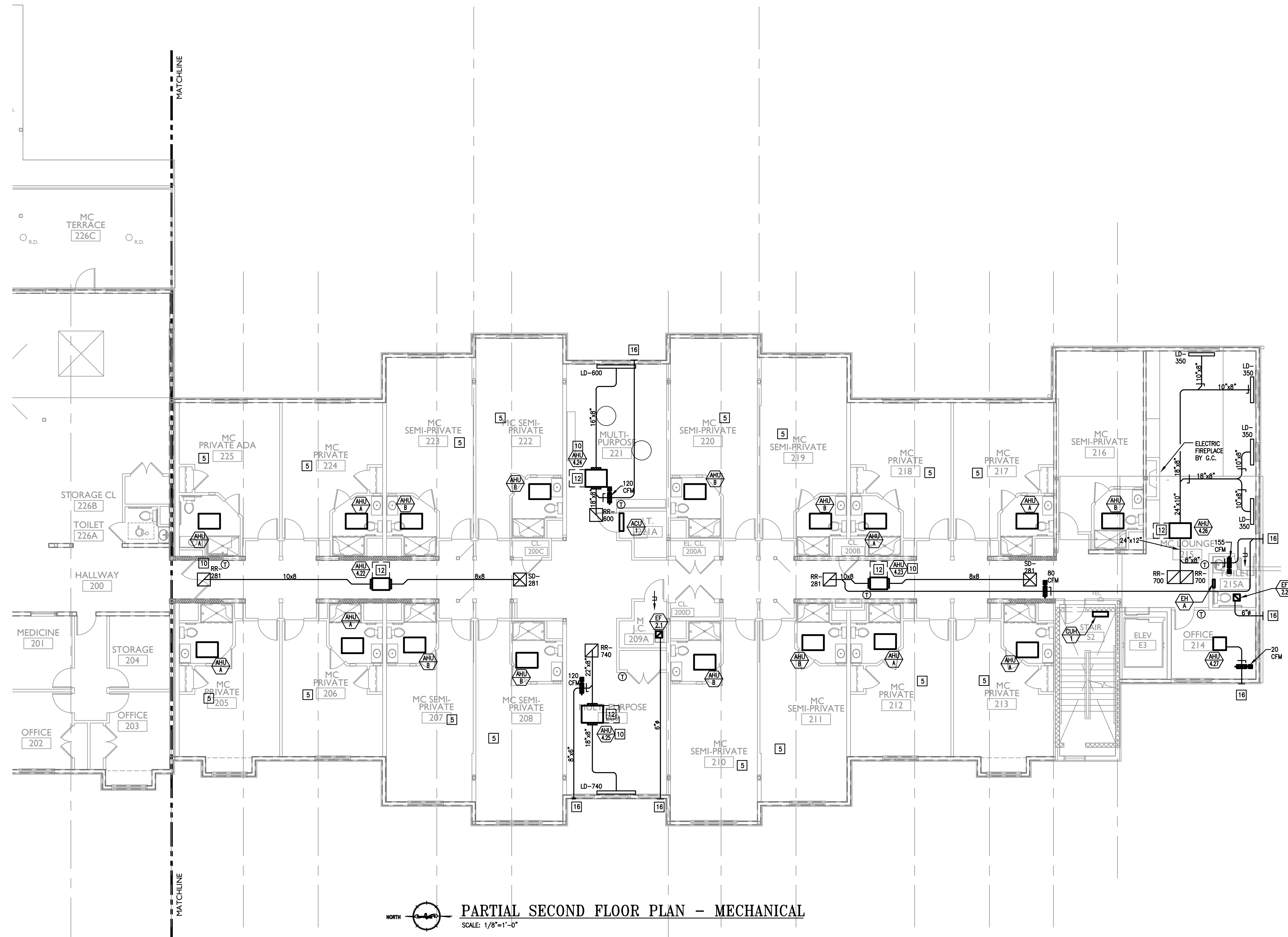
**McHUGH**  
ENGINEERING ASSOCIATES INC.  
1500 Peachtree Dunwoody Ave., Suite 200  
Atlanta, GA 30329  
Phone: 404.251.1000  
www.mchugh.com

**FIELD STONE @ CHESTER SPRINGS**  
ASSISTED LIVING FACILITY  
145 BYERS RD  
CHESTER SPRINGS, PA 19475

Construction Issue Date:  
Drawn By: STK/G/K/G  
Checked By: MW  
Scale: AS NOTED

Sheet Name: SECOND FLOOR PLAN  
Progress Prints:  
05.06.2022 PERMIT/BD SET  
05.06.2022 CONSTRUCTION SET 07.1.22  
REVISED: 05.22  
SCHEDULES: 05.23

**MI.3**



PARTIAL SECOND FLOOR PLAN - MECHANICAL  
SCALE: 1/8"=1'-0"

**MECHANICAL GENERAL NOTES:**

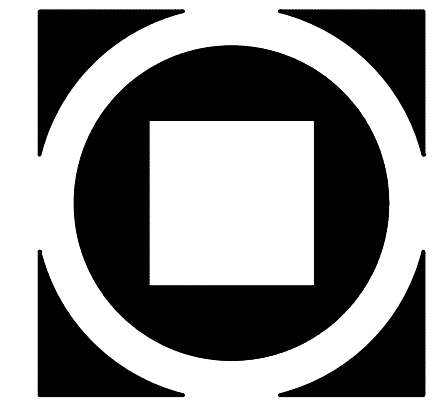
1. ALL DUCTWORK SIZES INDICATED ARE INSIDE DIMENSIONS UNLESS OTHERWISE NOTED.
2. DUCT SIZES INDICATED ON DRAWING ARE BASED AFTER THE LAST DIFFUSER AND/OR BRANCH TAKE-OFF.
3. CONTRACTOR TO PROVIDE A CLEAN OUT AT EVERY CHANGE IN DIRECTION OF A CONDENSATE LINE AND AT 50 FT. CENTERS.
4. RUN ALL CONDENSATE PIPING TO POINT OF DISCHARGE. PROVIDE REQUIRED AIR GAP AT DISCHARGE POINT. REFER TO PLANS & SPECIFICATIONS FOR SIZES AND REQUIREMENTS.
5. ALL DUCTWORK SERVING THE ENERGY RECOVERY UNIT SHALL BE MINIMAL 26 GAUGE SHEET METAL FROM THE ERU TO THE AIR DEVICE. NO FLEXIBLE DUCTWORK IS ALLOWED. THIS SHALL COMPLY WITH THE IBC 2015 717.5.4 FIRE PARTITIONS EXCEPTION #4.
6. COORDINATE FINAL THERMOSTAT LOCATIONS WITH ARCHITECT AND OWNER.
7. RECTANGULAR WEB OPENINGS SHALL BE PROVIDED IN THE LIGHT-GAUGE METAL TRUSS SYSTEM AS REQUIRED FOR MECHANICAL DUCTWORK RUNS. WEB OPENINGS IN ADJACENT TRUSSES SHALL BE ALIGNED IN ORDER TO PASS THROUGH THE TRUSSES IN A STRAIGHT LINE. THE MECHANICAL CONTRACTOR IS RESPONSIBLE FOR COORDINATING ALL REQUIRED DUCTWORK RUN PENETRATIONS WITH THE LIGHT-GAUGE METAL TRUSS MANUFACTURER, MECHANICAL ENGINEER, AND GENERAL CONTRACTOR.
8. EVERY DIFFUSER BRANCH DUCT SHALL HAVE A VOLUME DAMPER. ALL ENERGY RECOVERY DUCTWORK SHALL USE A CONSTANT AIR REGULATOR.
9. ALL FAN COILS SHALL HAVE FLEXIBLE CONNECTIONS ON SUPPLY AND RETURN. ALL DUCTWORK CONNECTIONS SHALL HAVE A SMOOTH TAPER DUCT CONNECTOR.
10. ALL EXHAUSTS AND VENT TERMINALS FROM NON-RESIDENTIAL SOURCES MUST BE LOCATED AT LEAST 10'-0" FROM FRESH AIR INTAKE TERMINALS AND AT LEAST 3'-0" FROM ANY OPERABLE PORTION OF A WINDOW.
11. ALL EXHAUSTS AND VENT TERMINALS FROM APARTMENTS MUST BE LOCATED AT LEAST 10'-0" FROM FRESH AIR INTAKE TERMINALS AND AT LEAST 3'-0" FROM ANY OPERABLE PORTION OF A WINDOW.
12. ANY DUCTWORK THAT RUNS OUTSIDE OF THE BUILDING ENVELOPE SHALL HAVE ADDITIONAL INSULATION. REFER TO THE INSULATION SPECIFICATION FOR FURTHER DETAIL.

**CONSTRUCTION NOTES: (NOT ALL NOTES USED, REFER TO PLANS)**


1. ROUTE LAUNDRY EXHAUST FROM DRYER OUTLET TO SIDEWALL VENT. PROVIDE ANODIZED DRYER VENT W/ BACKDRAFT DAMPER. SIDEWALL TERMINATION KIT TO EQUAL X-VENT. COORDINATE FINISHES WITH ARCHITECT.
2. ROUTE EXHAUST FROM FAN OUTLET TO EXTERIOR WALL. PROVIDE ANODIZED WALL CAP WITH BRIDSCREEN. COLOR SELECTED BY ARCHITECT.
3. ROUTE EXHAUST FROM FAN OUTLET TO EXTERIOR WALL. PROVIDE ANODIZED WALL CAP WITH BRIDSCREEN. COLOR SELECTED BY ARCHITECT.
4. ROUTE REFRIGERANT PIPING FROM FREEZER/ REFRIGERATOR UP TO CONDENSERS) ON ROOF PER MANUFACTURER'S REQUIREMENTS. CONDENSERS SHALL BE OUTDOOR, REMOTE MOUNTED, AND SHALL NOT REJECT HEAT TO THE SPACE.
5. REFER TO TYPICAL PLAN DRAWINGS ON SHEETS M2.1, M2.2, M2.3, AND M2.4, FOR EQUIPMENT LOCATIONS AND ASSOCIATED WORK IN THE RESIDENT UNITS.
6. COMBINATION FIRE AND SMOKE DAMPER. COORDINATE W/ EC AND FA CONTRACTORS IN ORDER TO INTEGRATE INTO SMOKE DETECTOR(S) AND FACP. CONTRACTOR SHALL INSTALL DAMPER WITH PROPER CLEARANCES AND ACCESS FOR MAINTENANCE. PROVIDE ACCESS PANELS (RATED) WHERE REQUIRED.
7. TYPE 1 COMMERCIAL KITCHEN HOOD GREASE DUCT WELDED STEEL W/ ZERO CLEARANCE WRAP FROM HOOD TO FAN INLET.
8. TYPE 2 DISHWASHER EXHAUST HOOD DUCT ALUMINUM FROM HOOD TO FAN INLET.
9. PROVIDE 18"x18" RECESSED FIRE RATED ACCESS PANEL W/ PERFORATED MUDRING FRAME. EQUAL TO ACQUOR FWC-5015 IN DRYWALL CEILING. AND FB-5060-TD IN WOOD CEILING. FINAL LOCATION SELECTED BY ARCHITECT AND OWNER DURING SHOP DRAWING PHASE OF PROJECT.
10. PROVIDE FILTERED RETURN GRILLE. NO FILTERED REQUIRED AT FAN COIL. REFER TO DIFFUSER SCHEDULE FOR SIZING.
11. PROVIDE 78"x64" O.A. LOUVER 23,000 CFM, 1" @ 1000 FPM, BASED ON GREENHECK "ESU-153" LOUVER PAINT IN COLOR SELECTED BY ARCHITECT.
12. PROVIDE 30" CLEARANCE ON CONDUIT SIDE OF UNIT
13. PROVIDE 6" VENT FROM FIRE PLACE TO ROOF. SIZING TO BE CONFIRMED BY THE MANUFACTURER PRIOR TO ROUGH IN.
14. EXTEND DUCTWORK TO ROOF. REFER TO ROOF PLAN FOR CONTINUATION.
15. NO DUCTWORK IS ALLOWED TO RUN ABOVE ELECTRICAL PANELS.
16. SIDEWALL TERMINATION KIT TO EQUAL X-VENT. COORDINATE FINISHES WITH ARCHITECT.
17. 4" DRYER EXHAUST DUCTS SHALL HAVE A SMOOTH INTERIOR FINISH AND SHALL BE CONSTRUCTED OF 26 GAUGE SHEET METAL. NO SCREWS ARE ALLOWED TO PROTRUDE THROUGH THE DUCT. VENT DRYER EXHAUST THROUGH SIDEWALL FOR FIRST AND SECOND FLOOR LOCATIONS, THRU ROOF FOR THIRD FLOOR LOCATIONS. SIDEWALL TERMINATION KIT TO EQUAL X-VENT (SINGLE/COMBINATION). PER DETAIL. PROVIDE DRYER WALL BOX, CLEAN OUT, & BOOSTER FAN \*WHERE REQUIRED) IN LAUNDRY ROOM.

THE DELIVERY OF THIS DRAWING SHOULD NOT BE CONSTRUED TO PROVIDE AN EXPRESS WARRANTY OR GUARANTEE TO ANYONE THAT ALL THE DIMENSIONS AND DETAILS ARE EXACT OR TO INDICATE THAT THE USE OF THIS DRAWING IMPLIES THE REVIEW AND APPROVAL BY THE DESIGN PROFESSIONAL OF ANY FUTURE USE. ANY USE OF THIS INFORMATION WITHOUT THE WRITTEN APPROVAL OF THE DESIGN PROFESSIONAL IS AT THE SOLE RISK AND LIABILITY OF THE USER. THE DESIGN PROFESSIONAL RESERVES THE RIGHT TO REMOVE OUR PROFESSIONAL SEAL AND/OR TITLE BLOCK.


NOTICE  
THE SCHEDULES AND DRAWINGS REPRESENT ONLY CERTAIN REQUIREMENTS OF THE PROJECT. THERE ARE ADDITIONAL REQUIREMENTS IN THE SPECIFICATIONS BOOKLET WHICH THE CONTRACTOR IS BOUND TO PROVIDE. A SUPPLIER OR CONTRACTOR'S PRICING, WHICH IS BASED ONLY ON DRAWINGS OR SCHEDULES, MAY LEAVE IMPORTANT COSTS UNACCOUNTED FOR WHICH WILL ULTIMATELY BE THE CONTRACTOR OR SUPPLIER'S RESPONSIBILITY TO PROVIDE.



**KIMMEL BOGRETTE**  
Architecture + Site  
482 Norristown Road, Suite 200  
Blue Bell, PA 19422  
Phone: 610.834.7805  
Facsimile: 610.834.7815  
© COPYRIGHT 2018 KIMMEL BOGRETTE ARCHITECTURE + SITE, INC. ALL RIGHTS RESERVED.



05/06/22



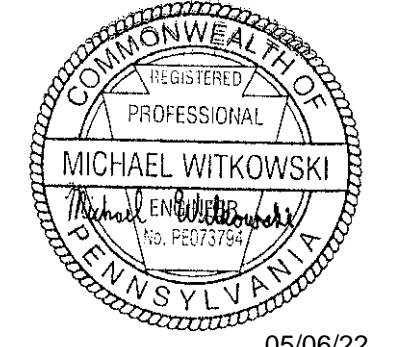
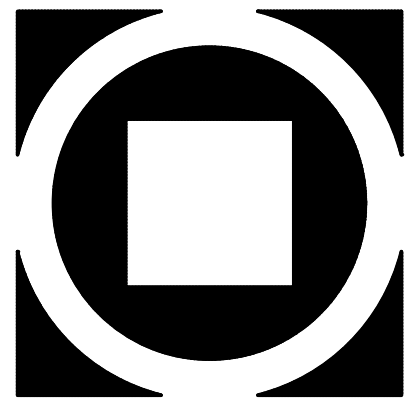
**McHUGH**  
ENGINEERING ASSOCIATES INC.  
1500 Peachtree Street, Suite 1500, Atlanta, GA 30309  
1940 Walnut St., Suite 102, Chester, PA 19380  
www.mchugheng.com  
202.641.0100

**FIELD STONE @ CHESTER SPRINGS**  
ASSISTED LIVING FACILITY  
145 BYERS RD  
CHESTER SPRINGS, PA 19375

Construction Issue Date: 05/06/22  
Drawn By: STK/G/KG  
Checked By: MW  
Scale: AS NOTED

Sheet Name: SECOND FLOOR PLAN  
Progress Prints: 05/06/2022 PERMIT/BID SET  
Revisions: 

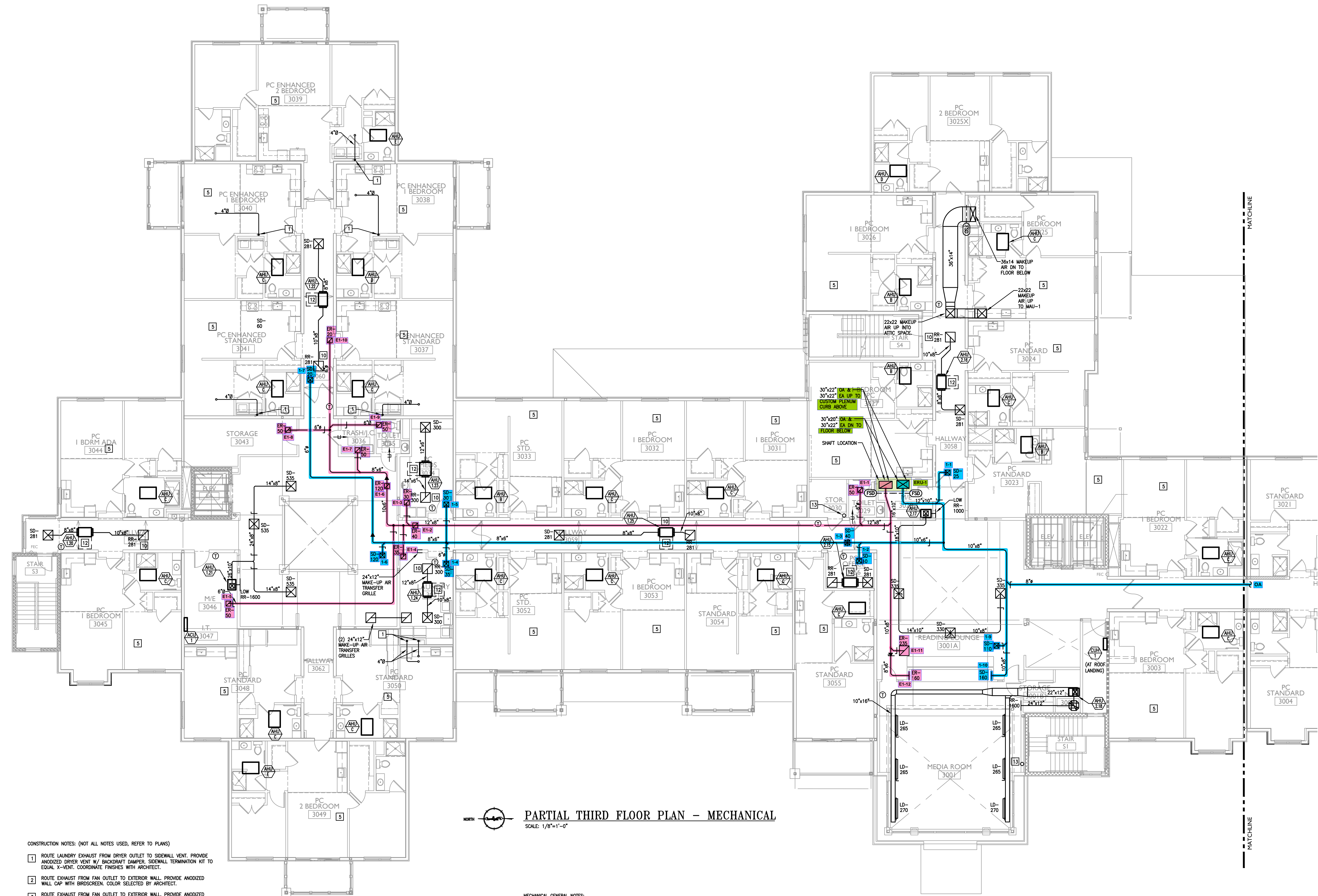

**MI.4**



05/06/22



Sheet Name: THIRD FLOOR PLAN	Revisions:
Progress Prints:	▲
05/06/2022 PERMIT/BID SET	▲
	▲
	▲



**PARTIAL THIRD FLOOR PLAN - MECHANICAL**  
 SCALE: 1/8"=1'-0"

- CONSTRUCTION NOTES: (NOT ALL NOTES USED, REFER TO PLANS)
- ROUTE LAUNDRY EXHAUST FROM DRYER OUTLET TO SIDEWALL VENT. PROVIDE ANODIZED DRYER VENT W/ BACKDRIFT DAMPER, SIDEWALL TERMINATION KIT TO EQUAL X-VENT. COORDINATE FINISHES WITH ARCHITECT.
  - ROUTE EXHAUST FROM FAN OUTLET TO EXTERIOR WALL. PROVIDE ANODIZED WALL CAP WITH BIRDSCREEN. COLOR SELECTED BY ARCHITECT.
  - ROUTE EXHAUST FROM FAN OUTLET TO EXTERIOR WALL. PROVIDE ANODIZED WALL CAP WITH BIRDSCREEN. COLOR SELECTED BY ARCHITECT.
  - ROUTE REFRIGERANT PIPING FROM FREEZER/ REFRIGERATOR UP TO CONDENSER(S) ON ROOF PER MANUFACTURER'S REQUIREMENTS. CONDENSERS SHALL BE OUTDOOR, REMOTE MOUNTED, AND SHALL NOT REJECT HEAT TO THE SPACE.
  - REFER TO TYPICAL UNIT PLAN DRAWINGS ON SHEETS M2.1, M2.2, M2.3, AND M2.4 FOR EQUIPMENT LOCATIONS AND ASSOCIATED WORK IN THE RESIDENT UNITS.
  - COMBINATION FIRE AND SMOKE DAMPER. COORDINATE W/ EC AND FA CONTRACTORS IN ORDER TO INTEGRATE INTO SMOKE DETECTOR(S) AND FACP. CONTRACTOR SHALL INSTALL DAMPER WITH PROPER CLEARANCES AND ACCESS FOR MAINTENANCE. PROVIDE ACCESS PANELS (RATED) WHERE REQUIRED.
  - TYPE 1 COMMERCIAL KITCHEN HOOD GREASE DUCT WELDED STEEL W/ ZERO CLEARANCE WRAP FROM HOOD TO FAN INLET.
  - TYPE 2 DISHWASHER EXHAUST HOOD DUCT ALUMINUM FROM HOOD TO FAN INLET.
  - PROVIDE 18"x18" RECESSED FIRE RATED ACCESS PANEL W/ PERFORATED MOUNTING FRAME. EQUAL TO ACQUOR FWC-5015 IN DRYWALL CEILINGS, AND FB-5066-10 IN WOOD CEILINGS. FINAL LOCATION SELECTED BY ARCHITECT AND OWNER DURING SHOP DRAWING PHASE OF PROJECT.

- PROVIDE FILTERED RETURN GRILLE, NO FILTERED REQUIRED AT FAN COIL. REFER TO DIFFUSER SCHEDULE FOR SIZING.
- PROVIDE 78"x64" O.A. LOUVER 23,000 CFM, 1" @ 1000 FPM BASED ON GREENHECK "ESU-153" LOUVER PAINT IN COLOR SELECTED BY ARCHITECT.
- PROVIDE 30" CLEARANCE ON CONDUIT SIDE OF UNIT
- PROVIDE 6" VENT FROM FIRE PLACE TO ROOF. SIZING TO BE CONFIRMED BY THE MANUFACTURER PRIOR TO ROUGH IN.
- EXTEND DUCTWORK TO ROOF. REFER TO ROOF PLAN FOR CONTINUATION.
- NO DUCTWORK IS ALLOWED TO RUN ABOVE ELECTRICAL PANELS.
- SIDEWALL TERMINATION KIT TO EQUAL X-VENT. COORDINATE FINISHES WITH ARCHITECT.
- 4" DRYER EXHAUST DUCTS SHALL HAVE A SMOOTH INTERIOR FINISH AND SHALL BE CONSTRUCTED OF 26 GAUGE SHEET METAL. NO SCREWS ARE ALLOWED TO PROTRUDE THROUGH THE DUCT. VENT DRYER EXHAUST THROUGH SIDEWALL FOR FIRST AND SECOND FLOOR LOCATIONS, THRU ROOF FOR THIRD FLOOR LOCATIONS. SIDEWALL TERMINATION KIT TO EQUAL X-VENT (SINGLE/COMBINATION), PER DETAIL. PROVIDE DRYER WALL BOX, CLEAN OUT, & BOOSTER FAN WHERE REQUIRED) IN LAUNDRY ROOM.

- MECHANICAL GENERAL NOTES:
- ALL DUCTWORK SIZES INDICATED ARE INSIDE DIMENSIONS UNLESS OTHERWISE NOTED.
  - DUCT SIZES INDICATED ON DRAWING ARE BASED AFTER THE LAST DIFFUSER AND/OR BRANCH TAKE-OFF.
  - CONTRACTOR TO PROVIDE A CLEAN OUT AT EVERY CHANGE IN DIRECTION OF A CONDENSATE LINE AND AT 50 FT. CENTERS.
  - RUN ALL CONDENSATE PIPING TO POINT OF DISCHARGE, PROVIDE REQUIRED AIR GAP AT DISCHARGE POINT, REFER TO PLANS & SPECIFICATIONS FOR SIZES AND REQUIREMENTS.
  - ALL DUCTWORK SERVING THE ENERGY RECOVERY UNIT SHALL BE MINIMAL 26 GAUGE SHEET METAL FROM THE ERU TO THE AIR DEVICE. NO FLEXIBLE DUCTWORK IS ALLOWED. THIS SHALL COMPLY WITH THE IBC 2015 717.5.4 FIRE PARTITIONS EXCEPTION #4.
  - COORDINATE FINAL THERMOSTAT LOCATIONS WITH ARCHITECT AND OWNER.
  - RECTANGULAR WEB OPENINGS SHALL BE PROVIDED IN THE LIGHT-GAUGE METAL TRUSS SYSTEM AS REQUIRED FOR MECHANICAL DUCTWORK RUNS. WEB OPENINGS IN ADJACENT TRUSSES SHALL BE ALIGNED IN ORDER TO PASS THROUGH THE TRUSSES IN A STRAIGHT LINE. THE MECHANICAL CONTRACTOR IS RESPONSIBLE FOR COORDINATING ALL REQUIRED DUCTWORK RUN PENETRATIONS WITH THE LIGHT-GAUGE METAL TRUSS MANUFACTURER, MECHANICAL ENGINEER, AND GENERAL CONTRACTOR.
  - EVERY DIFFUSER BRANCH DUCT SHALL HAVE A VOLUME DAMPER. ALL ENERGY RECOVERY DUCTWORK SHALL USE A CONSTANT AIR REGULATOR.
  - ALL FAN COLS SHALL HAVE FLEXIBLE CONNECTIONS ON SUPPLY AND RETURN. ALL DUCTWORK CONNECTIONS SHALL HAVE A SMOOTH TAPER DUCT CONNECTOR.
  - ALL EXHAUSTS AND VENT TERMINALS FROM NON-RESIDENTIAL SOURCES MUST BE LOCATED AT LEAST 10'-0" FROM FRESH AIR INTAKE TERMINALS AND OPERABLE PORTIONS OF ANY WINDOW.
  - ALL EXHAUSTS AND VENT TERMINALS FROM APARTMENTS MUST BE LOCATED AT LEAST 10'-0" FROM FRESH AIR INTAKE TERMINALS AND AT LEAST 3'-0" FROM ANY OPERABLE PORTION OF A WINDOW.
  - ANY DUCTWORK THAT RUNS OUTSIDE OF THE BUILDING ENVELOPE SHALL HAVE ADDITIONAL INSULATION, REFER TO THE INSULATION SPECIFICATION FOR FURTHER DETAIL.

THE DELIVERY OF THIS DRAWING SHOULD NOT BE CONSTRUED TO PROVIDE AN EXPRESS WARRANTY OR GUARANTEE TO ANYONE THAT THE USE OF THIS DRAWING IMPLIES THE REVIEW AND APPROVAL BY THE DESIGN PROFESSIONAL OF ANY FUTURE USE. ANY USE OF THIS INFORMATION WITHOUT THE WRITTEN APPROVAL BY THE DESIGN PROFESSIONAL IS AT THE SOLE RISK AND LIABILITY OF THE USER. THE DESIGN PROFESSIONAL RESERVES THE RIGHT TO REMOVE OUR PROFESSIONAL SEAL AND/OR TITLE BLOCK.

NOTICE  
 THE SCHEDULES AND DRAWINGS REPRESENT ONLY CERTAIN REQUIREMENTS OF THE PROJECT. THERE ARE ADDITIONAL REQUIREMENTS IN THE SPECIFICATIONS BOOKLET WHICH THE CONTRACTOR IS BOUND TO PROVIDE. A SUPPLIER OR CONTRACTOR'S PRICING, WHICH IS BASED ONLY ON DRAWINGS OR SCHEDULES, MAY LEAVE IMPORTANT COSTS UNACCOUNTED FOR WHICH WILL ULTIMATELY BE THE CONTRACTOR OR SUPPLIER'S RESPONSIBILITY TO PROVIDE.



