









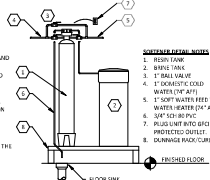






**PLUMBING SUPPLY PLAN NOTES**

- CONNECT TO THE EXISTING 1" DOMESTIC WATER SERVICE.
- PROVIDE 1/2" FILTERED WATER TO THE MAG IN BOX SODA CARBONATOR AT 100' AFT. SODA CARBONATOR SHALL HAVE AN INTERNAL, SELF-CLEANING CONNECTION TO THE BASE ON PREVENTION DEVICE.
- PROVIDE WATER HEATER (DWH-1) AND (DWH-2) PER DETAIL 1/27/20.
- PROVIDE WATER HEATER (DWH-1) AND (DWH-2) PER DETAIL 1/27/20.
- PROVIDE WATER HEATER (DWH-1) AND (DWH-2) PER DETAIL 1/27/20. PROVIDE 1/2" SUPPLY PIPES FROM FILTERS TO EX-MARKER AND SODA CARBONATOR AS SHOWN.
- PROVIDE 1/2" FILTERED WATER ROUGH-IN TO THE CEILING AT 5' AFT. PROVIDE 1" LONG BUSINESS STEEL LAGGING BRASS BRAD NAILING MACHINE WATER CONNECTOR WITH MINIMUM 0.43" ID (BRASS CRAFT 0.43" DIA F OR EQUAL) FOR FINAL CONNECTION TO EX-MARKER.
- PROVIDE DOMESTIC WATER ROUGH-IN FOR THE MOP BASIN FAUCET AT 30' AFT. PROVIDE DOMESTIC WATER ROUGH-INS FOR THE COMMICAL DISPENSER FAUCET (H-1) AT 6' AFT DIRECTLY ABOVE THE MOP BASIN FAUCET. SEE ARCHITECTURAL ELEVATION FOR ADDITIONAL INFORMATION.
- PROVIDE 1/2" FILTERED WATER ROUGH-IN FOR THE MOP BASIN FAUCET ON 3RD GAS ROUGH-INS.
- PROVIDE GAS CONNECTIONS TO THE COOKING EQUIPMENT PER DETAIL 1/27/20.
- SUPPORT THE GAS PIPES ON THE ROOF PER DETAIL 1/27/20. AVOID BLOCKING IS NOT AN ACCEPTABLE METHOD OF SUPPORTING THE GAS PIPES.
- PROVIDE ACCESSIBLE LINE-SIZE GAS VALVE, DRIFT LEG, AND UNION AT GAS CONNECTION TO THE EQUIPMENT.
- REFER TO ARCHITECTURAL DRAWINGS FOR RAVING CEILING AND EXTENSION EXPOSED GAS PIPES.
- PROVIDE DOMESTIC WATER ROUGH-INS FOR THE CHEMICAL DISPENSER FAUCET (H-1) AT 6' AFT. SEE ARCHITECTURAL ELEVATION FOR ADDITIONAL INFORMATION.
- PROVIDE DOMESTIC WATER ROUGH-INS FOR THE VICTORY WASH DISPENSER FAUCET (H-2) AT 5' AFT. SEE ARCHITECTURAL ELEVATION FOR ADDITIONAL INFORMATION.
- PROVIDE 1/2" FILTERED WATER ROUGH-INS AS SHOWN IN DETAIL 1/27/20.
- PROVIDE 1/2" FILTERED WATER ROUGH-INS FOR THE PREP SINK (SK-2) FAUCET AT 3' AFT TO ALLOW FOR THE VICTORY WASH CHEMICAL BOX TO BE INSTALLED DIRECTLY BELOW THE PREP SINK BASIN. MAKE FINAL CONNECTION TO PREP SINK FAUCET USING 1/2" BRASS CRAFT 0.43" DIA F OR EQUAL. WATER HEATER CONNECTION TO ROSE.
- PROVIDE 3/4" HOT WATER TO THE DISH MACHINE. MAKE FINAL CONNECTION USING CONNECTION HOSE FURNISHED WITH DISH MACHINE. PROVIDE WATER MAINING ARRESTOR ON HOT WATER LINE. PROVIDE AN ACCESSIBLE SHUTOFF VALVE BELOW THE DISH MACHINE AND INSTALL THE STRAINER FURNISHED WITH THE DISH MACHINE IN AN ACCESSIBLE LOCATION AT THE CONNECTION TO THE UNIT.
- PROVIDE ROOF PENETRANT (H-1) WITH BOTTOM OF NOZZLE INSTALLED 1/4" ABOVE THE BOTTOM OF ROOF DECK. PROVIDE ACCESSIBLE LOCATION 1/4" H WATER SUPPLY TO ROOF. PROVIDE ROOF PENETRANT PER THE MANUFACTURER'S INSTALLATION INSTRUCTIONS.
- PROVIDE 1/2" DOMESTIC WATER ROUGH-INS FOR THE SPEED-FILL HOT FILLER FAUCET (H-1) AT 6' AFT. SEE ARCHITECTURAL ELEVATION FOR DETAIL.
- PROVIDE 1/2" FILTERED WATER ROUGH-IN TO THE CEILING AT 2' AFT. PROVIDE 1" LONG BUSINESS STEEL LAGGING BRASS BRAD NAILING MACHINE WATER CONNECTION WITH MINIMUM 0.43" ID (BRASS CRAFT 0.43" DIA F OR EQUAL) FOR FINAL CONNECTION TO EX-MARKER.
- INSTALL ROSE ROSE ROSE SANITIZER FURNISHED BY THE PER CHIPOTLE'S INSTALLATION INSTRUCTIONS. LOCATE ROSE BELOW UTENSIL COUNTER IN A LOCATION THAT DOES NOT INTERFERE WITH THE ROLLING BACK BELOW THE UTENSIL COUNTER.
- PROVIDE ACCESSIBLE SHUT OFF VALVE ABOVE UTENSIL COUNTER AS SHOWN. INSTALL PER MANUFACTURER'S INSTALLATION INSTRUCTIONS WITH A SERVICE VALVE AT THE TRAP PRIMER INLET. PROVIDE 1/2" DIPS (HUB) TO FLOOR DOWN TRAP PRIMER CONNECTIONS AS SHOWN. HORIZONTAL CONNECTIONS TO FLOOR SHALL HAVE CONTINUOUS SLOPE TO THE FLOOR (DRAIN).
- PROVIDE WATER SOFTENER ENTRY PER DETAIL 1/27/20.
- PROVIDE WATER SOFTENER AS SHOWN IN DETAIL 1/27/20 SHEET.



- FROM FLOOR
- BRASS TANK
- 1" BALL VALVE
- 1" DOWNFLOW
- 1" SOFT WATER FEED TO WATER HEATER (DWH-1)
- 3/4" SOFT WATER FEED TO PREP SINK
- PLUG LINED WITH GIPS
- PROTECTED DRAINLET
- DRAINAGE RADICATOR
- FINISHED FLOOR

**PLUMBING FIXTURE SUPPLY CONNECTIONS**

**ROUGH-IN TYPE KEY**

- ANGLE 1/2" BRASS CRAFT 0.43" DIA F OR EQUAL (BRASS CRAFT 0.43" DIA F OR EQUAL) STOP WITH 1/2" COMPRESSION CONNECTION
- ANGLE 1/2" BRASS CRAFT 0.43" DIA F OR EQUAL (BRASS CRAFT 0.43" DIA F OR EQUAL) STOP WITH 1/2" COMPRESSOR CONNECTION
- ANGLE 1/2" OVERFLOW TANKS HL, W/ 3/4" SWAST X MIP ADAPTER OR EQUAL (BRASS ANGLE STOP W/ 3/4" RP INLET AND OUTLET)
- DRIFT: PROVIDE COPPER PIPE IN CONNECTION SIZE SHOWN TO THE UNIT
- MODE 1/2" APPROXIMATE BRASS W/ ROOF OR EQUAL (BRASS CRAFT) WITH GAS AND/OR WATER
- MIP: PROVIDE PIPE WITH MIP THROUGH SLAB, BEED OUT OF WALL IN CONNECTION SIZE SHOWN AND LENGTH COMPATIBLE WITH FIXTURE AND WALL MATERIALS (W/ROSE)

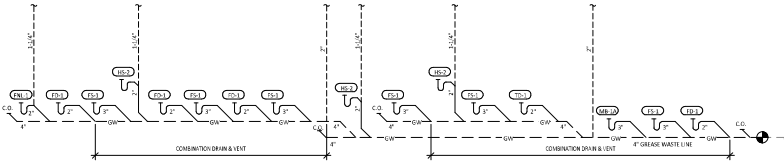
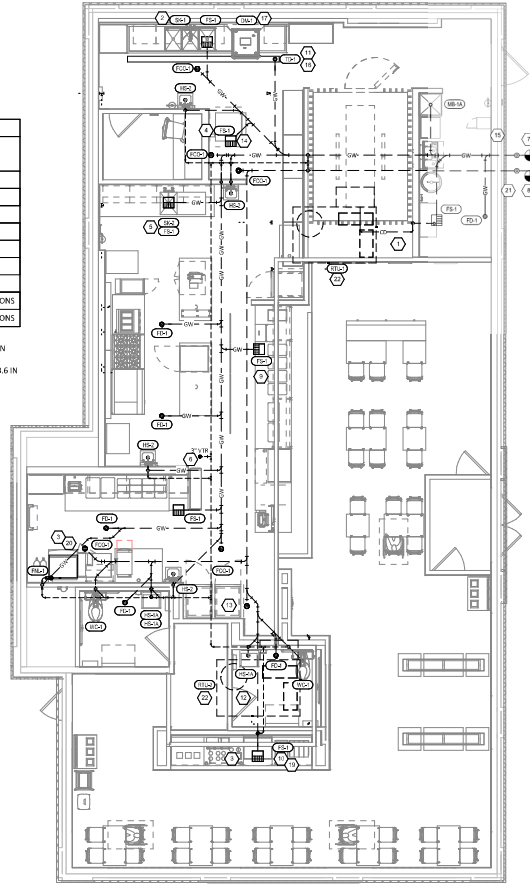
TAG	FIXTURE	CONNECTION SIZES		ROUGH-IN TYPE	FIXTURE UNITS (EACH)			FIXTURE UNITS (TOTAL)		
		CW	HW		CW	HW	TOTAL	CW	HW	TOTAL
RSF-1	REFRIGERATION SYSTEMS	1/2"	DRIFT	DRIFT	0	1	1	0	1	1
DM-1	DISH WASHING MACHINE (MUNIP)	3/4"	ANGLE 3/4"	DRIFT	0	0	0	0	0	0
ET-1	EXHAUST FAN	3/4"	DRIFT	DRIFT	0	0	0	0	0	0
HW-1	WATER HEATER	1/2"	MODE 1/2"	MIP	1.5	1.5	3	1.5	1.5	3
HW-2	WATER HEATER	1/2"	MODE 1/2"	MIP	1.5	1.5	3	1.5	1.5	3
MS-13	MULTI-PURPOSE HAND SINK FAUCET	1/2"	ANGLE 3/4"	MIP	1.5	1.5	3	1.5	1.5	3
MS-14	MULTI-PURPOSE HAND SINK FAUCET	1/2"	ANGLE 3/4"	MIP	1.5	1.5	3	1.5	1.5	3
MS-15	MULTI-PURPOSE HAND SINK FAUCET	1/2"	ANGLE 3/4"	MIP	1.5	1.5	3	1.5	1.5	3
MS-16	MULTI-PURPOSE HAND SINK FAUCET	1/2"	ANGLE 3/4"	MIP	1.5	1.5	3	1.5	1.5	3
MS-17	MULTI-PURPOSE HAND SINK FAUCET	1/2"	ANGLE 3/4"	MIP	1.5	1.5	3	1.5	1.5	3
MS-18	MULTI-PURPOSE HAND SINK FAUCET	1/2"	ANGLE 3/4"	MIP	1.5	1.5	3	1.5	1.5	3
MS-19	MULTI-PURPOSE HAND SINK FAUCET	1/2"	ANGLE 3/4"	MIP	1.5	1.5	3	1.5	1.5	3
MS-20	MULTI-PURPOSE HAND SINK FAUCET	1/2"	ANGLE 3/4"	MIP	1.5	1.5	3	1.5	1.5	3
MS-21	MULTI-PURPOSE HAND SINK FAUCET	1/2"	ANGLE 3/4"	MIP	1.5	1.5	3	1.5	1.5	3
MS-22	MULTI-PURPOSE HAND SINK FAUCET	1/2"	ANGLE 3/4"	MIP	1.5	1.5	3	1.5	1.5	3
MS-23	MULTI-PURPOSE HAND SINK FAUCET	1/2"	ANGLE 3/4"	MIP	1.5	1.5	3	1.5	1.5	3
MS-24	MULTI-PURPOSE HAND SINK FAUCET	1/2"	ANGLE 3/4"	MIP	1.5	1.5	3	1.5	1.5	3
MS-25	MULTI-PURPOSE HAND SINK FAUCET	1/2"	ANGLE 3/4"	MIP	1.5	1.5	3	1.5	1.5	3
MS-26	MULTI-PURPOSE HAND SINK FAUCET	1/2"	ANGLE 3/4"	MIP	1.5	1.5	3	1.5	1.5	3
MS-27	MULTI-PURPOSE HAND SINK FAUCET	1/2"	ANGLE 3/4"	MIP	1.5	1.5	3	1.5	1.5	3
MS-28	MULTI-PURPOSE HAND SINK FAUCET	1/2"	ANGLE 3/4"	MIP	1.5	1.5	3	1.5	1.5	3
MS-29	MULTI-PURPOSE HAND SINK FAUCET	1/2"	ANGLE 3/4"	MIP	1.5	1.5	3	1.5	1.5	3
MS-30	MULTI-PURPOSE HAND SINK FAUCET	1/2"	ANGLE 3/4"	MIP	1.5	1.5	3	1.5	1.5	3
MS-31	MULTI-PURPOSE HAND SINK FAUCET	1/2"	ANGLE 3/4"	MIP	1.5	1.5	3	1.5	1.5	3
MS-32	MULTI-PURPOSE HAND SINK FAUCET	1/2"	ANGLE 3/4"	MIP	1.5	1.5	3	1.5	1.5	3
MS-33	MULTI-PURPOSE HAND SINK FAUCET	1/2"	ANGLE 3/4"	MIP	1.5	1.5	3	1.5	1.5	3
MS-34	MULTI-PURPOSE HAND SINK FAUCET	1/2"	ANGLE 3/4"	MIP	1.5	1.5	3	1.5	1.5	3
MS-35	MULTI-PURPOSE HAND SINK FAUCET	1/2"	ANGLE 3/4"	MIP	1.5	1.5	3	1.5	1.5	3
MS-36	MULTI-PURPOSE HAND SINK FAUCET	1/2"	ANGLE 3/4"	MIP	1.5	1.5	3	1.5	1.5	3
MS-37	MULTI-PURPOSE HAND SINK FAUCET	1/2"	ANGLE 3/4"	MIP	1.5	1.5	3	1.5	1.5	3
MS-38	MULTI-PURPOSE HAND SINK FAUCET	1/2"	ANGLE 3/4"	MIP	1.5	1.5	3	1.5	1.5	3
MS-39	MULTI-PURPOSE HAND SINK FAUCET	1/2"	ANGLE 3/4"	MIP	1.5	1.5	3	1.5	1.5	3
MS-40	MULTI-PURPOSE HAND SINK FAUCET	1/2"	ANGLE 3/4"	MIP	1.5	1.5	3	1.5	1.5	3
MS-41	MULTI-PURPOSE HAND SINK FAUCET	1/2"	ANGLE 3/4"	MIP	1.5	1.5	3	1.5	1.5	3
MS-42	MULTI-PURPOSE HAND SINK FAUCET	1/2"	ANGLE 3/4"	MIP	1.5	1.5	3	1.5	1.5	3
MS-43	MULTI-PURPOSE HAND SINK FAUCET	1/2"	ANGLE 3/4"	MIP	1.5	1.5	3	1.5	1.5	3
MS-44	MULTI-PURPOSE HAND SINK FAUCET	1/2"	ANGLE 3/4"	MIP	1.5	1.5	3	1.5	1.5	3
MS-45	MULTI-PURPOSE HAND SINK FAUCET	1/2"	ANGLE 3/4"	MIP	1.5	1.5	3	1.5	1.5	3
MS-46	MULTI-PURPOSE HAND SINK FAUCET	1/2"	ANGLE 3/4"	MIP	1.5	1.5	3	1.5	1.5	3
MS-47	MULTI-PURPOSE HAND SINK FAUCET	1/2"	ANGLE 3/4"	MIP	1.5	1.5	3	1.5	1.5	3
MS-48	MULTI-PURPOSE HAND SINK FAUCET	1/2"	ANGLE 3/4"	MIP	1.5	1.5	3	1.5	1.5	3
MS-49	MULTI-PURPOSE HAND SINK FAUCET	1/2"	ANGLE 3/4"	MIP	1.5	1.5	3	1.5	1.5	3
MS-50	MULTI-PURPOSE HAND SINK FAUCET	1/2"	ANGLE 3/4"	MIP	1.5	1.5	3	1.5	1.5	3
MS-51	MULTI-PURPOSE HAND SINK FAUCET	1/2"	ANGLE 3/4"	MIP	1.5	1.5	3	1.5	1.5	3
MS-52	MULTI-PURPOSE HAND SINK FAUCET	1/2"	ANGLE 3/4"	MIP	1.5	1.5	3	1.5	1.5	3
MS-53	MULTI-PURPOSE HAND SINK FAUCET	1/2"	ANGLE 3/4"	MIP	1.5	1.5	3	1.5	1.5	3
MS-54	MULTI-PURPOSE HAND SINK FAUCET	1/2"	ANGLE 3/4"	MIP	1.5	1.5	3	1.5	1.5	3
MS-55	MULTI-PURPOSE HAND SINK FAUCET	1/2"	ANGLE 3/4"	MIP	1.5	1.5	3	1.5	1.5	3
MS-56	MULTI-PURPOSE HAND SINK FAUCET	1/2"	ANGLE 3/4"	MIP	1.5	1.5	3	1.5	1.5	3
MS-57	MULTI-PURPOSE HAND SINK FAUCET	1/2"	ANGLE 3/4"	MIP	1.5	1.5	3	1.5	1.5	3
MS-58	MULTI-PURPOSE HAND SINK FAUCET	1/2"	ANGLE 3/4"	MIP	1.5	1.5	3	1.5	1.5	3
MS-59	MULTI-PURPOSE HAND SINK FAUCET	1/2"	ANGLE 3/4"	MIP	1.5	1.5	3	1.5	1.5	3
MS-60	MULTI-PURPOSE HAND SINK FAUCET	1/2"	ANGLE 3/4"	MIP	1.5	1.5	3	1.5	1.5	3
MS-61	MULTI-PURPOSE HAND SINK FAUCET	1/2"	ANGLE 3/4"	MIP	1.5	1.5	3	1.5	1.5	3
MS-62	MULTI-PURPOSE HAND SINK FAUCET	1/2"	ANGLE 3/4"	MIP	1.5	1.5	3	1.5	1.5	3
MS-63	MULTI-PURPOSE HAND SINK FAUCET	1/2"	ANGLE 3/4"	MIP	1.5	1.5	3	1.5	1.5	3
MS-64	MULTI-PURPOSE HAND SINK FAUCET	1/2"	ANGLE 3/4"	MIP	1.5	1.5	3	1.5	1.5	3
MS-65	MULTI-PURPOSE HAND SINK FAUCET	1/2"	ANGLE 3/4"	MIP	1.5	1.5	3	1.5	1.5	3
MS-66	MULTI-PURPOSE HAND SINK FAUCET	1/2"	ANGLE 3/4"	MIP	1.5	1.5	3	1.5	1.5	3
MS-67	MULTI-PURPOSE HAND SINK FAUCET	1/2"	ANGLE 3/4"	MIP	1.5	1.5	3	1.5	1.5	3
MS-68	MULTI-PURPOSE HAND SINK FAUCET	1/2"	ANGLE 3/4"	MIP	1.5	1.5	3	1.5	1.5	3
MS-69	MULTI-PURPOSE HAND SINK FAUCET	1/2"	ANGLE 3/4"	MIP	1.5	1.5	3	1.5	1.5	3
MS-70	MULTI-PURPOSE HAND SINK FAUCET	1/2"	ANGLE 3/4"	MIP	1.5	1.5	3	1.5	1.5	3
MS-71	MULTI-PURPOSE HAND SINK FAUCET	1/2"	ANGLE 3/4"	MIP	1.5	1.5	3	1.5	1.5	3
MS-72	MULTI-PURPOSE HAND SINK FAUCET	1/2"	ANGLE 3/4"	MIP	1.5	1.5	3	1.5	1.5	3
MS-73	MULTI-PURPOSE HAND SINK FAUCET	1/2"	ANGLE 3/4"	MIP	1.5	1.5	3	1.5	1.5	3
MS-74	MULTI-PURPOSE HAND SINK FAUCET	1/2"	ANGLE 3/4"	MIP	1.5	1.5	3	1.5	1.5	3
MS-75	MULTI-PURPOSE HAND SINK FAUCET	1/2"	ANGLE 3/4"	MIP	1.5	1.5	3	1.5	1.5	3
MS-76	MULTI-PURPOSE HAND SINK FAUCET	1/2"	ANGLE 3/4"	MIP	1.5	1.5	3	1.5	1.5	3
MS-77	MULTI-PURPOSE HAND SINK FAUCET	1/2"	ANGLE 3/4"	MIP	1.5	1.5	3	1.5	1.5	3
MS-78	MULTI-PURPOSE HAND SINK FAUCET	1/2"	ANGLE 3/4"	MIP	1.5	1.5	3	1.5	1.5	3
MS-79	MULTI-PURPOSE HAND SINK FAUCET	1/2"	ANGLE 3/4"	MIP	1.5	1.5	3	1.5	1.5	3
MS-80	MULTI-PURPOSE HAND SINK FAUCET	1/2"	ANGLE 3/4"	MIP	1.5	1.5	3	1.5	1.5	3
MS-81	MULTI-PURPOSE HAND SINK FAUCET	1/2"	ANGLE 3/4"	MIP	1.5	1.5	3	1.5	1.5	3
MS-82	MULTI-PURPOSE HAND SINK FAUCET	1/2"	ANGLE 3/4"	MIP	1.5	1.5	3	1.5	1.5	3
MS-83	MULTI-PURPOSE HAND SINK FAUCET	1/2"	ANGLE 3/4"	MIP	1.5	1.5	3	1.5	1.5	3
MS-84	MULTI-PURPOSE HAND SINK FAUCET	1/2"	ANGLE 3/4"	MIP	1.5	1.5	3	1.5	1.5	3
MS-85	MULTI-PURPOSE HAND SINK FAUCET	1/2"	ANGLE 3/4"	MIP	1.5	1.5	3	1.5	1.5	3
MS-86	MULTI-PURPOSE HAND SINK FAUCET	1/2"	ANGLE 3/4"	MIP	1.5	1.5	3	1.5	1.5	3
MS-87	MULTI-PURPOSE HAND SINK FAUCET	1/2"	ANGLE 3/4"	MIP	1.5	1.5	3	1.5	1.5	3
MS-88	MULTI-PURPOSE HAND SINK FAUCET	1/2"	ANGLE 3/4"	MIP	1.5	1.5	3	1.5	1.5	3
MS-89	MULTI-PURPOSE HAND SINK FAUCET	1/2"	ANGLE 3/4"	MIP	1.5	1.5	3	1.5	1.5	3
MS-90	MULTI-PURPOSE HAND SINK FAUCET	1/2"	ANGLE 3/4"	MIP	1.5	1.5	3	1.5	1.5	3
MS-91	MULTI-PURPOSE HAND SINK FAUCET	1/2"	ANGLE 3/4"	MIP	1.5	1.5	3	1.5	1.5	3
MS-92	MULTI-PURPOSE HAND SINK FAUCET	1/2"	ANGLE 3/4"	MIP	1.5	1.5	3	1.5	1.5	3
MS-93	MULTI-PURPOSE HAND SINK FAUCET	1/2"	ANGLE 3/4"	MIP	1.5	1.5	3	1.5	1.5	3
MS-94	MULTI-PURPOSE HAND SINK FAUCET	1/2"	ANGLE 3/4"	MIP	1.5	1.5	3	1.5	1.5	3
MS-95	MULTI-PURPOSE HAND SINK FAUCET	1/2"	ANGLE 3/4"	MIP	1.5	1.5	3	1.5	1.5	3
MS-96	MULTI-PURPOSE HAND SINK FAUCET	1/2"	ANGLE 3/4"	MIP	1.5	1.5	3	1.5	1.5	3
MS-97	MULTI-PURPOSE HAND SINK FAUCET	1/2"	ANGLE 3/4"	MIP	1.5	1.5	3	1.5	1.5	3
MS-98	MULTI-PURPOSE HAND SINK FAUCET	1/2"	ANGLE 3/4"	MIP	1.5	1.5	3	1.5	1.5	3
MS-99	MULTI-PURPOSE HAND SINK FAUCET	1/2"	ANGLE 3/4"	MIP	1.5					

**PLUMBING WASTE AND VENT PLAN NOTES**

1. PROVIDE 3/4" CONDENSATE DRAIN FROM THE VALVE IN COOLER EXHAUSTOR TO THE FLOOR SINK BELOW THE ICE MAKER AS SHOWN. SEPT CONDENSATE DRAIN IS MINIMUM OF 1/2" DIA. PROVIDE CONDENSATE DRAIN IN WALL RUN COOLER AS HIGH AS POSSIBLE. CONCEAL DRAIN PIPING WITH FRAMED WALLS AS SHOWN. DISCHARGE THROUGH AN AIR GAP. MAKE FINAL CONNECTION TO EXHAUSTOR FROM WALL RUN COOLER USING A UNION. CONDENSATE DRAIN SHOULD PENETRATE WALL BEHIND ICE MAKER AT 3" AFF AND BE SECURED TO FLOOR UNDER ICE MAKER.
2. PROVIDE DRAIN CONNECTIONS TO THE TRAP COMPARTMENT'S SINK PER DETAIL 137700.
3. COORDINATE ROUTING OF FRESH WINDERS WITH COCA-COLA TELEVISION FROM BAG ROOM AREA TO EACH ROOM. OTHER THAN WITHIN THE WALLS DOWN TO THE OVER HOD. THE SOCA ROUNDS SHALL BE ROUTED OVERHEAD WITHOUT CORNER COORDINATE SUPPORT AND CUTTING OF THE SOCA LINE ROUNDS WITH COCA-COLA TELEVISION. DURING RUN IN AND PROVIDE NECESSARY SUPPORTS. SEE ARCHITECTURAL DRAWINGS FOR SOCA ROUTE. TERMINATION LOCATION AND PROVIDE TERMINATION PER DETAIL 137700.
4. PROVIDE DRAIN PIPES FROM THE ICE MACHINE TO THE FLOOR SINK PER THE MANUFACTURER'S INSTALLATION INSTRUCTIONS. PROVIDE A CODE APPROVED AIR GAP AT THE DISCHARGE TO THE FLOOR SINK. SECURE ICE MAKER DRAIN PIPES TO THE BOTTOM OF THE ICE MAKER.
5. PROVIDE DRAIN LINES FROM THE FOODPANS SINK TO THE FLOOR SINK. PROVIDE AN AIR GAP AT THE DISCHARGE TO THE FLOOR SINK.
6. PROVIDE 3/4" VENT THROUGH THE ROOF PER DETAIL 137700.
7. PROVIDE 1500 GALLON GREASE INTERCEPTOR (G-I) SEE CIVILITY PLAN FOR EX-1 LOCATION. AND CONTINUATION OF 4" GREASE WASTE PIPE TO G-1.
8. SEE CIVILITY PLAN FOR G-1 LOCATION AND COORDINATION OF 4" SANITARY WASTE PIPE TO G-1.
9. PROVIDE 3/4" VALVED DRAIN FROM HOT FOOD TABLE TO THE FLOOR SINK. DRAIN THROUGH AN AIR GAP.
10. PROVIDE INSULATED COPPER DRAIN LINES FROM THE TEA TRAY DRAIN AND THE SOCA MACHINE DRAIN TO THE FLOOR SINK. DRAIN THROUGH AN AIR GAP. HOLD TEA TRAY DRAIN AS HIGH AS POSSIBLE AND SECURE TO STRUCTURE BELOW THE UTILITY LOCATIONS.
11. TIE IN FRENCH DRAIN LINES PER THE MANUFACTURER'S INSTALLATION INSTRUCTIONS PRIOR TO INSTALLATION SO THAT GRATE PITS WITHOUT ISSUES. INSTALL FRENCH DRAIN WITH SUFFICIENT POSITIVE SLOPE TOWARD THE DRAIN CONNECTOR TO AVOID STANDING WATER IN FRENCH DRAIN.
12. HOLD HORIZONTAL VENT PIPES ABOVE THE RESTROOM BELOW THE TOP OF THE PLYWOOD BOX ELEMENT. PAINT EXPOSED VERTICAL VENT PIPES TO MATCH THE ROOF STOCK.
13. DO NOT PROVIDE WALL CLEARCUTS ON THE OR PUBLICLY VISIBLE WALLS. IF A WALL CLEARCUT IS REQUIRED ON THESE SURFACE COORDINATE WITH THE BASIC LOCATIONS WITH CHICKEN'S CORNER RESTROOM MANAGER.
14. PROVIDE INDIRECT WASTE AND CONDENSATE DRAINS FROM FIXTURES OTHER THAN FLOTHENS WAS CONCEALED IN THE WALL AS SHOWN IN DETAIL 137700.
15. PROVIDE DRAIN FROM WATER FILTER BPP TO FLOOR DRAIN CONCEALED IN THE WALL AS SHOWN IN DETAIL 137700.
16. PROVIDE TRENCH DRAIN AS SHOWN IN DETAIL 137700.
17. INSTALL DRAIN HOSE HUNGERS WITH ICE MACHINE FROM DASH MACHINE DILET TO FLOOR SINK. HOLD DRAIN HOSE TIGHT TO WALL AND SECURE TO 3/4" COMP SINK DRAIN TO MAINTAIN AN AIR GAP AT THE FLOOR SINK.
18. PROVIDE 1/2" DIA DRAIN PIPE FROM THE ICE MACHINE TO THE FLOOR SINK PER THE MANUFACTURER'S INSTALLATION INSTRUCTIONS. PROVIDE A CODE APPROVED AIR GAP AT THE DISCHARGE TO THE FLOOR SINK.
19. SEE DETAIL 137700 FOR DRAIN FROM TEA TRAY, HOT WATER, AND SOCA MACHINE TO FLOOR DRAIN.
20. REFER TO UTILITY PLAN FOR G-1 VENTING.
21. PROVIDE CONDENSATE FROM ON FLOOR PER DETAIL 137700.
22. PROVIDE CONDENSATE FROM ON FLOOR PER DETAIL 137700.

GREASE INTERCEPTOR SIZING				
FIXTURE	QTY.	DFU EA.	DFU TOTAL	
4-COMP SINK FLOOR SINK (3")	1	6	6	
MOP SINK (3")	1	3	3	
FAX LINE FLOOR SINK (3")	1	6	6	
SERVE LINE FLOOR SINK (3")	1	6	6	
PREP SINK FLOOR SINK (3")	1	6	6	
FLOOR DRAIN (2")	2	2	4	
TOTAL			33	
MINIMUM REQUIRED GREASE INTERCEPTOR CAPACITY			1,000 GALLONS	
PROPOSED GREASE INTERCEPTOR CAPACITY			1,500 GALLONS	

- NOTES:**
1. DRAINAGE FIXTURE UNIT VALUES BASED ON TABLES 7-2, 7-3, & 7-4 IN THE 2013 WASHINGTON PLUMBING CODE.
  2. REQUIRED GREASE INTERCEPTOR CAPACITY BASED ON TABLE 1014.3.6 IN THE 2013 WASHINGTON PLUMBING CODE.



**SANITARY WASTE & VENT DIAGRAM**

**SANITARY WASTE & VENT PLAN**

**NATIONAL**  
 4635 Trueman Blvd. Suite 250  
 Hilliard, Ohio 43026  
 Phone: (614) 761-1810  
 Fax: (614) 552-6340  
 Contact: DENNIS ALT  
 (614) 595-0599  
 DALI@nationalengineering.com

**CHIPOTLE MEXICAN GRILL**  
 STORE NO.: 5149  
 BURTONSVILLE CROSSING, MD  
 15701 Old Columbia Pike  
 Burtonsville, MD

**PLUMBING PLAN WASTE & VENT**  
 P110











