

HVAC SYMBOLS

☒ SUPPLY AIR DUCT OR GRILLE	[M] MOTORIZED DAMPER
CHS CHILLED WATER SUPPLY	[S] SMOKE DETECTION DEVICE
CHR CHILLED WATER RETURN	[T] THERMOSTAT
HS HOT WATER SUPPLY	[SD] DUCT SMOKE DETECTOR
HR HOT WATER RETURN	R.A.G. RETURN AIR GRILLE
R.D. REFRIGERANT DISCHARGE LINE	DIFF. DIFFUSER
R.S. REFRIGERANT SUCTION LINE	M.D. MANUAL DAMPER
O.A. OUTDOOR AIR	F.D. FIRE DAMPER
R.A. RETURN AIR	F.C. FLEXIBLE CONNECTION
S.A. SUPPLY AIR	S.E. SMOKE EXHAUST
—D— RETURN AIR DUCT OR GRILLE	
TE TOILET EXHAUST	

ALL SYMBOLS MAY NOT BE USED


MECHANICAL KEYED NOTES

- 1 AN HVAC EXISTING UNIT 7.5 TON ROOFTOP UNIT RTU-1 (FOR KITCHEN) IS INSTALLED, REFER TO EQUIPMENT SCHEDULE ON SHEET M2. PROVIDE FLEXIBLE CONNECTORS FOR THE SUPPLY AND RETURN AIR DUCT CONNECTIONS. TRANSITION TO DUCT SIZES SHOWN. PROVIDE DUCT WORK AND AIR DISTRIBUTION DEVICES AS INDICATED ON THE PLAN. REFER TO EQUIPMENT SCHEDULES FOR ADDITIONAL REQUIREMENTS.
- 2 AN HVAC EXISTING UNIT 4 TON ROOFTOP UNIT RTU-2 (FOR LOBBY AREA) IS INSTALLED, REFER TO EQUIPMENT SCHEDULE ON SHEET M2. PROVIDE FLEXIBLE CONNECTORS FOR THE SUPPLY AND RETURN AIR DUCT CONNECTIONS. TRANSITION TO DUCT SIZES SHOWN. PROVIDE DUCT WORK AND AIR DISTRIBUTION DEVICES AS INDICATED ON THE PLAN. REFER TO EQUIPMENT SCHEDULES FOR ADDITIONAL REQUIREMENTS.
- 3 16" EXHAUST RISER UP FROM HOOD COLLAR. EXTEND DUCT UP TO FAN ON ROOF. REFER TO DETAILS ON SHEET M2 FOR EXHAUST DUCT FIRE BARRIER DUCT WRAP. EXHAUST DUCT AND FIRE BARRIER DUCT WRAP PROVIDED BY OWNER INSTALLED BY MECHANICAL CONTRACTOR. IF WELDED EXHAUST DUCT IS USED, MECHANICAL CONTRACTOR TO PROVIDE EXHAUST DUCT AND FIRE BARRIER DUCT WRAP.
- 4 16" EXHAUST DUCT UP THROUGH ROOF TO EF-1 ON ROOF. ROOF MOUNTED KITCHEN EXHAUST FAN EF-1 AND CURB TO BE PROVIDED BY OWNER AND INSTALLED BY MECHANICAL CONTRACTOR. SEE EQUIPMENT SCHEDULE AND FAN/HOOD DETAILS FOR ADDITIONAL INFORMATION. ROOF CURB TO BE 20" REFER TO HOOD DRAWINGS.
- 5 28"x12" SUPPLY DUCT RISER UP FROM 28"x12" DUCT COLLAR (TYPICAL OF 3). EXTEND DUCT UP TO MAIN SUPPLY DUCT.
- 6 13"x11" UP THROUGH ROOF TO MUA-1 ON ROOF. ROOF MOUNTED KITCHEN MAKE-UP AIR UNIT MUA-1 AND CURB TO BE PROVIDED BY OWNER AND INSTALLED BY MECHANICAL CONTRACTOR. SEE EQUIPMENT SCHEDULE AND FAN/HOOD DETAILS FOR ADDITIONAL INFORMATION. PROVIDE EXTENSION AS REQUIRED FOR 10 FEET MINIMUM FROM EXHAUST VENT.
- 7 EXTEND DUCTS FROM EACH CEILING EXHAUST FAN TO 10"Ø AT EXHAUST DUCT THROUGH ROOF. TERMINATE ROOF DUCT NO LESS THAN 10"-0" FROM ANY OUTSIDE AIR INTAKE. PROVIDE WEATHERPROOF CAP AND BIRDSCREEN.
- 8 PROVIDE AN EQUIPMENT COMPATIBLE PROGRAMMABLE THERMOSTAT WITH NIGHT SETBACK FEATURE AND LOCKING COVER. MOUNT AT 48" A.F.F. COORDINATE EXACT LOCATION WITH OWNER ON SITE. (TYPICAL OF 2).
- 9 EXHAUST HOOD TO BE PROVIDED BY OWNER AND INSTALLED BY MECHANICAL CONTRACTOR. SEE DRAWING SHEET H1 AND MECHANICAL EQUIPMENT SCHEDULE FOR ADDITIONAL INFORMATION. VOLUME OF EXHAUST PER U.L. LISTING FOR HOOD. SEE ARCHITECTURAL DRAWINGS FOR HOOD MOUNTING LOCATION AND DIMENSIONS.
- 10 COORDINATE NEW RTU-1,2 AND MAU-1 LOCATION WITH EXISTING ROOF JOIST, COORDINATE WITH STRUCTURAL ENGINEER.
- 11 PROVIDE TITUS 50F 26x18 TRANSFER AIR GRILLE IN SOFFIT ABOVE COOLER.
- 12 FURNISH AND INSTALL GALVANIZED STEEL DUCTWORK, SIZES AS NOTED ON DRAWINGS. DUCTWORK SIZES ARE SHEET METAL SIZES. ALL NEW DUCTWORK SHALL HAVE 1" INTERNAL LINER.
- 13 PROVIDE 120V SMOKE DETECTOR IN RETURN AIR DUCT TO MEET LOCAL CODE REQUIREMENTS. PROVIDE INTERLOCK WIRING TO DE-ENERGIZE ALL RTU'S UPON DETECTION OF SMOKE.
- 14 WALK-IN COOLER WITH R-404A REFRIGERANT AT 64 OZ. CAPACITY. VOLUME OF COOLER IS 648 CU. FEET, FLAME SPREAD IS 15, AND COMPRESSOR IS 1.5 H.P.
- 15 1" EXTERNALLY INSULATED RETURN AIR DUCT. COORDINATE ROUTING WITH EXISTING STRUCTURE, PIPING, ETC.
- 16 CONTRACTOR SHALL ENSURE THAT EXHAUST FANS ARE AT LEAST 10'-0" AWAY FROM ANY OUTSIDE AIR INTAKES FOR MAU-1, RTU-1, RTU-2, AND ADJOINING TENANT'S OUTSIDE AIR INTAKES.
- 17 PRE-PIPED FIRE SUPPRESSION SYSTEM SUPPLIED WITH HOOD AND PROVIDED BY OWNER. SEE SHEET H1 FOR DETAILS. MECHANICAL CONTRACTOR SHALL INSTALL OWNER PROVIDED FIRE SUPPRESSION GAS VALVE AND MAKE ALL ELECTRICAL CONNECTIONS. FIRE SYSTEM HOOKUP IS PROVIDED BY CAPTIVE AIRE.
- 18 VOLUME DAMPER AT DUCT CONNECTION TO MAIN SUPPLY AIR DUCT, TYPICAL.
- 19 SUPPLY AIR DIFFUSER CFM RATES SHALL BE ADJUSTED AS REQUIRED FOR PROPER AIR FLOW AROUND THE HOOD.
- 20 8"Ø SUPPLY AIR DUCT DOWN TO HOOD SUPPLY DIFFUSER. TRANSITION AS REQUIRED. BALANCE TO 130 CFM.
- 21 ANSUL SYSTEM PULL STATION, VERIFY EXACT LOCATION IN FIELD WITH LOCAL CODE OFFICIAL PRIOR TO INSTALLATION.
- 22 PROVIDE COMPATIBLE REMOTE TEMPERATURE SENSORS. CONNECT TO CORRESPONDING THERMOSTATS. MOUNT 48" A.F.F. COORDINATE EXACT LOCATION WITH OWNER ON SITE.

MECHANICAL GENERAL NOTES

1. DUCTWORK SHALL BE RUN ABOVE CEILING AS HIGH AS POSSIBLE IN GENERAL LOCATIONS SHOWN, BUT SHALL CONFORM TO ALL STRUCTURAL AND FINISH CONDITIONS OF BUILDINGS. COORDINATE WITH STRUCTURAL AND ARCHITECTURAL DRAWINGS PRIOR TO ANY INSTALLATION.
2. LOCATE EQUIPMENT AND FIXTURES APPROXIMATELY AS SHOWN CONFORMING TO ALL ARCHITECTURAL AND STRUCTURAL ITEMS. PROVIDE ALL SUPPORTS, HANGERS AND OPENINGS AS REQUIRED FOR A COMPLETE INSTALLATION. CONTRACTOR SHALL COORDINATE WITH ALL TRADES FOR CLEARANCES, AND EXACT LOCATIONS OF EQUIPMENT. ALL EQUIPMENT AND FIXTURES SHALL BE INSTALLED PER MANUFACTURER'S RECOMMENDATIONS AND IN FULL ACCORDANCE WITH ALL APPLICABLE CODES.
3. CEILING MOUNTED AIR DEVICES SHALL BE APPROXIMATELY AS SHOWN. FOR EXACT LOCATION AND FRAME MOUNTING TYPES, REFER TO ARCHITECTURAL REFLECTED CEILING PLAN. ALL CEILING DIFFUSERS TO BE 4-WAY UNLESS NOTED OTHERWISE BY AIRFLOW ARROWS, ON FLOOR PLAN. EXTEND FLEX DUCTWORK FROM DIFFUSERS. INSTALL STRAIGHT AS POSSIBLE WITH LONG RADIUS BENDS AND CLAMPS TO BE USED AT BOTH ENDS.
4. DUCTWORK WITH TURNING VANES INSTALLED IN ALL ELBOWS OF SUPPLY AIR DUCTS, AIR EXTRACTORS AT ALL RECTANGULAR TAKE-OFFS, AND TWIST-IN TAP WITH MANUAL VOLUME DAMPER AT ALL ROUND BRANCH TAKE-OFFS TO AIR DEVICES.
5. DUCT SMOKE DETECTORS REQUIRED IN UNIT RETURN AIR PLENUM SHALL BE IONIZATION TYPE AND SHALL BE APPROVED AND LISTED BY UL OR FM FOR DUCT INSTALLATION. ACTIVATION OF A DUCT DETECTOR SHALL CAUSE SHUTDOWN OF RTU. CONTROL AND INTERLOCK WIRING SHALL RUN IN CONDUIT WHICH SHALL BE SIZED TO SUIT THE NUMBER, TYPE AND SIZE OF CONDUCTORS AND SHALL BE PROVIDED BY THE MECHANICAL CONTRACTOR. CONTROL AND INTERLOCK WIRING SHALL BE IN SEPARATE CONDUIT FROM POWER WIRING PER NEC. ALL WIRING SHALL BE IN ACCORDANCE WITH NEC. PROVIDE ALL APPROPRIATE ACCESS PANELS.
6. PROVIDE ELECTRONIC PROGRAMMABLE THERMOSTAT WITH SUB-BASE AS NOTED ON PLAN. TRANSFORMERS AND 24 VOLT CONTROL WIRING. ELECTRICAL CONTRACTOR SHALL PROVIDE POWER WIRING. THERMOSTATS SHALL BE MOUNTED 48" A.F.F. AND SET POINT SHALL BE AS FOLLOWS: COOLING IN DINING 74°F; ALL OTHERS 78°F; HEATING 68°F FOR ALL. VERIFY FINAL LOCATION WITH OWNER.
7. BUILDING AIR SYSTEMS SHALL BE BALANCED PER DATA INCLUDED ON THE DRAWINGS TO ACHIEVE RELATIVE AIR VOLUMES AS INDICATED ON THE DRAWINGS AND SCHEDULED HEREIN.
8. ALL DUCT SIZES INDICATED ON DRAWINGS ARE CLEAR INTERNAL DIMENSIONS.
9. WHERE SHOWN ON THE DRAWINGS, PROVIDE VOLUME DAMPERS WITH LOCKING QUADRANTS OR SPLITTERS WITH HINGE AND ROD THRU SIDE OF DUCT WITH SET SCREW. VOLUME DAMPER HANDLES SHALL BE INSTALLED ON THE BOTTOM OF THE SPIN-IN FITTING AND SHALL HAVE RING SET IN FULL OPEN POSITION.
10. KITCHEN EXHAUST HOODS: EXTEND EXHAUST AND MAKE-UP AIR DUCT AS SHOWN AND TRANSITION AS REQUIRED TO HOOD TAPS. REFER TO HOOD DRAWINGS SHEET H1 FOR EXACT SIZES AND LOCATIONS. SLOPE EXHAUST DUCTS BACK TO KITCHEN EXHAUST HOOD. PROVIDE ACCESS DOORS AS REQUIRED FOR INSPECTION AND CLEANING. ENCLOSE KITCHEN EXHAUST DUCT IN FIRE BARRIER 15A FIRE RETARDANT DUCT WRAP AS REQUIRED BY CODE. REFER TO ARCHITECTURAL DRAWINGS FOR ADDITIONAL REQUIREMENTS. HEIGHT TO FAN OUTLET: 40" ABOVE ROOF. KITCHEN HOOD SUPPLY AND EXHAUST FANS SHALL BE INTERLOCKED WITH THE FIRE SUPPRESSION SYSTEM.
11. COORDINATE LOCATIONS OF EXHAUST FAN, MAKE-UP AIR UNIT, AND RTU'S WITH EXISTING STEEL BEAMS AND JOIST. COORDINATE WITH STRUCTURAL ENGINEER.
12. ALL EXHAUST OUTLETS WILL BE A MINIMUM OF 10'-0" FROM ANY AIR INTAKE.

CONSULTANT:
 ARCHITECT:
 BEAUMONT & ASSOCIATES
 MAXWELL A. BEAUMONT,
 ARCHITECT
 EMERYVILLE, CA
 design@acute-consulting.com

CLIENT:

 WINGSTOP RESTAURANT, INC
 2801 N CENTRAL EXPRESSWAY
 DALLAS, TEXAS 75204
 PHONE NO.: (972) 686-6500
 FAX NO.: (972) 686-6502

DISCLAIMER:
 THESE DRAWINGS, IDEAS, SPECIFICATIONS AND DESIGNS ARE EXCLUSIVE PROPERTY OF WINGSTOP RESTAURANTS, INC. NO PART OF THESE DRAWINGS MAY BE COPIED, REPRODUCED, OR OTHER STRUCTURES BUILT FROM SUCH WITHOUT THE WRITTEN CONSENT OF WINGSTOP RESTAURANTS, INC.

COPYRIGHT © 2013
 WINGSTOP RESTAURANTS, INC.
 ALL RIGHTS RESERVED.

PROJECT INFORMATION:

PROJECT INFORMATION:

WINGSTOP
 STORE NUMBER: GL#AC317
 2180 EL CAMINO REAL
 ATASCADERO, CA 93422



PROJECT NO.: #AC317
 DRAWN BY: EAL
 CHECKED BY: JCG

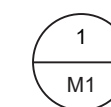
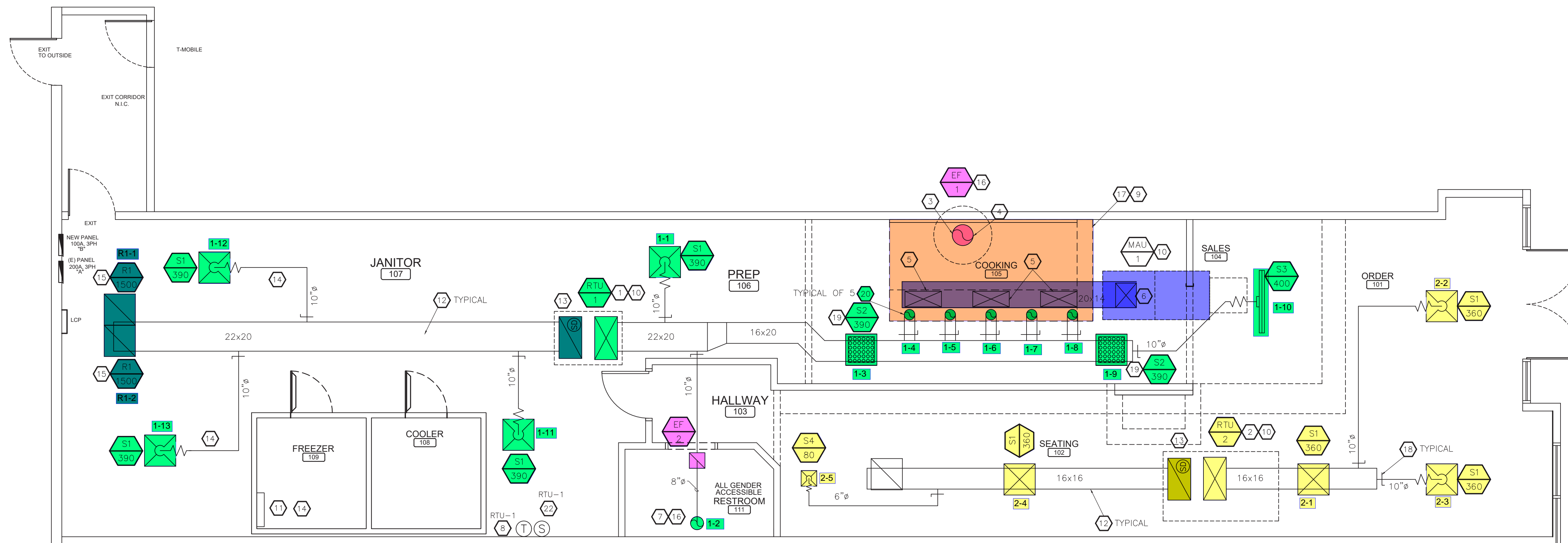
ISSUE: DATE:
 PERMIT SET 09-25-2025

REVISION:	DATE:
▲	
▲	
▲	
▲	
▲	
▲	
▲	
▲	
▲	
▲	

WRI-TRAD_v103

PROJECT LOCATION:
 ATASCADERO, CA

SHEET NUMBER / TITLE:
M1
 MECHANICAL PLAN



MECHANICAL FLOOR PLAN

1/4" = 1'-0"