

NIKE INC.
ONE BOWERMAN DRIVE
BEAVERTON, OR 97005



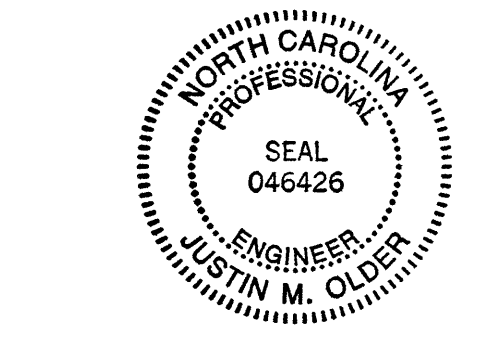
Don M. Decomos, Architect
960 Atlantic Avenue
Alameda, CA 94501
Tel 510 865 6663

MBH PROJECT: 56391



HENDERSON ENGINEERS
8345 LENEXA DRIVE, SUITE 300
LENEXA, KS 66214
TEL 913.742.5200 FAX 913.742.5001
WWW.HENDERSONENGINEERS.COM
2150002043
EXPIRES 6/30/2022

Date	No.	Description
08/09/21		ISSUE FOR PERMIT
10/01/21	1	PERMIT ISSUE REVISION 1
12/15/2021	3	ISSUE FOR CONSTRUCTION



12/15/2021

NIKE BY CARY
4 FENTON MAIN STREET
STE 140
CARY, NC 27511

Project Number
Config: R/L
Drawn By: HENDERSON
Checked By: HENDERSON

MECHANICAL HVAC PLANS

M-100

THE DUCTWORK LAYOUT INDICATED ON THE DRAWINGS IS SCHEMATIC AND SHOWS DESIGNED INTENT ONLY. PRIOR TO FABRICATION AND INSTALLATION OF DUCTWORK, DIVISION 23 SHALL HAVE A QUALIFIED, EXPERIENCED SKETCHER PREPARE AND SUBMIT SHEET METAL SHOP DRAWINGS. SHOP DRAWINGS SHALL TAKE INTO ACCOUNT ALL EXISTING CONDITIONS, INCLUDING BUT NOT LIMITED TO, STRUCTURAL MEMBERS, CONDUITS AND PIPING TO REMAIN. SHOP DRAWINGS SHALL ALSO TAKE INTO ACCOUNT ALL NEW DESIGN CONDITIONS, INCLUDING BUT NOT LIMITED TO, STRUCTURAL MEMBERS, PIPING, CEILINGS, SOFFIT HEIGHTS, AND LIGHT FIXTURES.

SHOP DRAWINGS SHALL INDICATE ALL REVISIONS TO THE LAYOUT REQUIRED TO ACCOMMODATE THE EXISTING CONDITIONS AND/OR MAINTAIN THE CEILING HEIGHTS AND CLEARANCES REQUIRED. NOTIFY THE ARCHITECT AND ENGINEER OF ANY LOCATION WHERE THE DESIGN INTENT CANNOT BE MET PRIOR TO FABRICATION AND INSTALLATION OF DUCTWORK. REVISIONS TO DUCTWORK, EQUIPMENT, CONDUIT AND/OR PIPING REQUIRED BY CONTRACTOR'S FAILURE TO SUBMIT PROPERLY PREPARED SHOP DRAWINGS SHALL BE THE RESPONSIBILITY OF DIVISION 23 AT NO ADDITIONAL COST TO THE CLIENT OR DELAY TO THE PROJECT SCHEDULE.

GENERAL CONTRACTOR IS RESPONSIBLE FOR PROVIDING TO ARCHITECT, ENGINEER, LANDLORD, AND BUILDING OFFICIAL/INSPECTOR A FINAL TEST AND BALANCE REPORT PER THE SPECIFICATIONS. PROVIDE TEST AND BALANCE REPORT TO ARCHITECT, ENGINEER, AND LANDLORD PRIOR TO THE FINAL BUILDING INSPECTION.

LANDLORD REQUIREMENTS:
LANDLORD APPROVED ROOFING CONTRACTOR SHALL BE RESPONSIBLE FOR MAKING ALL CUTS THROUGH THE EXISTING ROOF. MODIFYING EXISTING OPENINGS, AND/OR ALTERING CURB FLASHING AT GENERAL CONTRACTOR'S EXPENSE. COORDINATE WITH GENERAL CONTRACTOR.

EMS CONTROLS:
CONTRACTORS ARE RESPONSIBLE FOR COORDINATING ALL EQUIPMENT CONTROLS WITH EMS VENDOR PRIOR TO PURCHASE AND INSTALLATION. CONTRACTORS SHALL COORDINATE WITH EMS VENDOR TO PROVIDE ALL NECESSARY EQUIPMENT AND ACCESSORIES FOR A FULLY FUNCTIONING SYSTEM.

TEMPERATURE CONTROLS:
EMS VENDOR SHALL FURNISH SENSORS AND CONTROL COMPONENTS AS INDICATED ON PLANS AND AS NECESSARY TO ACCOMPLISH THE INTENT OF THE DRAWINGS. ALL CONTROLS SHALL BE TIED INTO THE EMS SYSTEM UNLESS NOTED OTHERWISE.

GENERAL CONTRACTOR SHALL INSTALL CARRIER FURNISHED TEMPORARY THERMOSTATS AND FEED THE WIRING DOWN INTO THE SPACE FOR START UP AND CONTROL OF RTUs (S) UNTIL THE EMS SYSTEM IS OPERABLE. REFER TO M3.0 FOR CARRIER CONTACT INFORMATION.

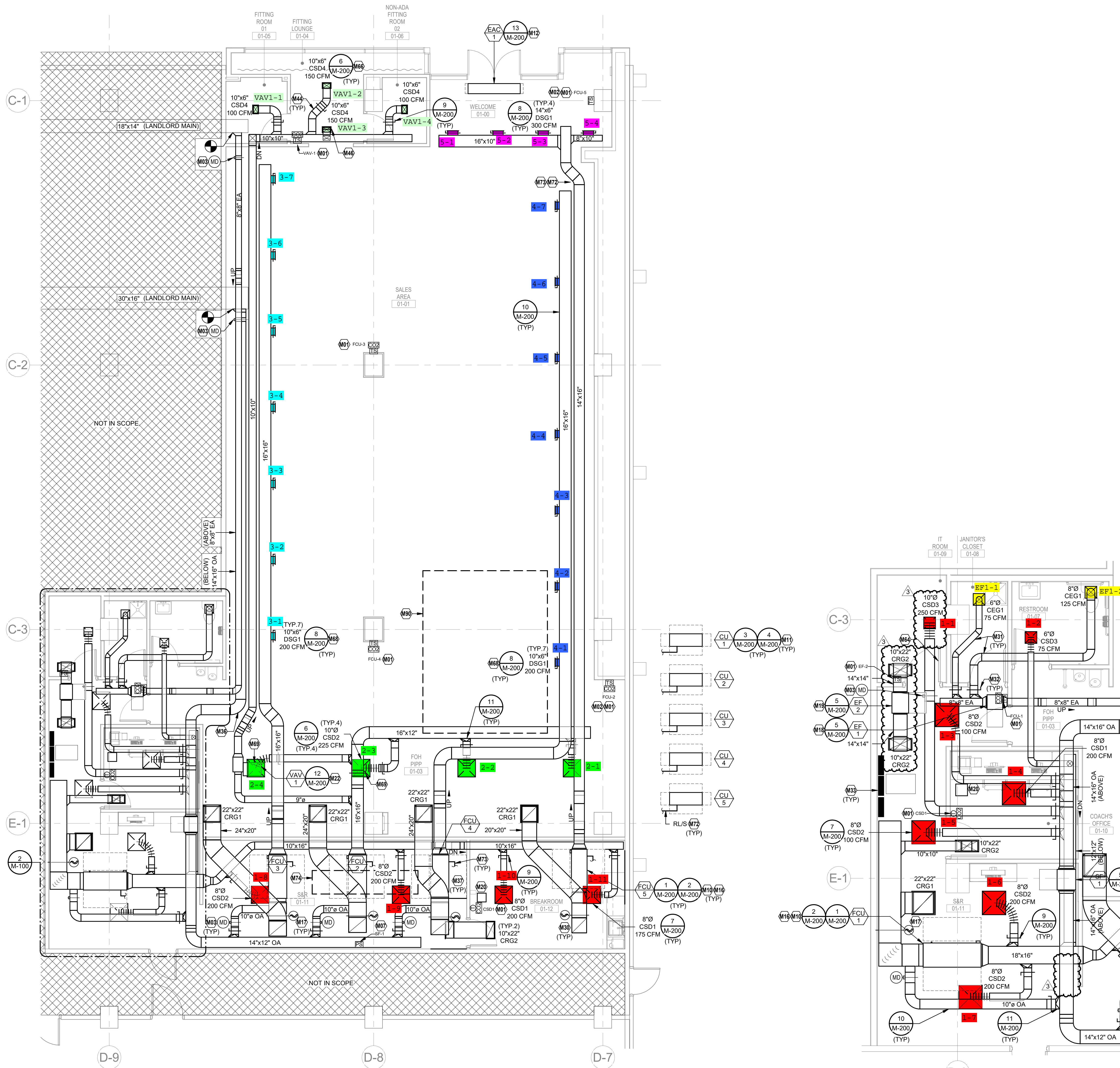
PROVIDE RFID DUCTWORK MESH OVER TRANSFER GRILLS BELOW 15'-0" AFF BETWEEN THE STOCKROOM AND THE SALES FLOOR, IF APPLICABLE.

INSTALL DUCTWORK AND PIPING AS TIGHT TO STRUCTURE AS POSSIBLE. COORDINATE WITH OTHER TRADES TO AVOID CONFLICTS. COORDINATE INSTALLATION OF DUCTWORK AND PIPING TO AVOID CONFLICTS WITH ELECTRICAL PANELS, LIGHTING FIXTURES, ETC.

KEYNOTES ARE PROTOTYPICAL. MISSING KEYNOTE NUMBERS INDICATE A PROTOTYPICAL NOTE IS NOT USED OR REMOVED.

MECHANICAL PLAN NOTES

- M01 ALL THERMOSTATS AND SENSORS FURNISHED BY EMS VENDOR AND INSTALLED BY DIVISION 26, UNLESS NOTED OTHERWISE.
- M02 DO NOT INSTALL SENSORS ON WALL GRAPHICS. CONFIRM LOCATIONS OF SENSORS WITH PM PRIOR TO INSTALL.
- M03 INSTALL DAMPER AND ACTUATOR IN LOCATION INDICATED. DAMPER FURNISHED BY DIVISION 23. ACTUATOR FURNISHED BY EMS VENDOR.
- M07 PROVIDE DUCT STATIC PRESSURE SENSOR IN LOCATION SHOWN FOR CONTROL OF OUTSIDE AIR SUPPLY FAN. COORDINATE CONTROLS WITH EMS VENDOR PRIOR TO CONSTRUCTION.
- M10 PROVIDE NEW DX SPLIT SYSTEM FAN COIL UNIT AS SCHEDULED SUPPORTED FROM STRUCTURE ABOVE. PROVIDE A NEW SET OF MERV 13 AIR FILTERS IN UNIT BEFORE TURNING SYSTEM OVER TO OWNER. COORDINATE CONDENSATE PIPING WITH DIVISION 25.
- M11 CONDENSING UNITS LOCATIONS SHOWN FOR REFERENCE ONLY. LOCATE UNITS IN LANDLORD PROVIDED TENANT ROOF SPACE. COORDINATE EXACT LOCATION OF CONDENSING UNIT WITH LANDLORD PRIOR TO INSTALL. LANDLORD SHALL CONFIRM ADEQUATE ACCESS AND CLEARANCES ARE PROVIDED FOR EACH CONDENSING UNIT.
- M12 PROVIDE NEW AIR CURTAIN UNIT WITH ELECTRIC HEATING AS SCHEDULED. INSTALL AS HIGH AS POSSIBLE PER MANUFACTURER'S REQUIREMENTS, OR AT ELEVATION SPECIFIED BY ARCHITECTURAL PLANS. COORDINATE EXACT LOCATION WITH ARCHITECT PRIOR TO INSTALLATION. SUPPORT AIR CURTAIN FROM STRUCTURE ABOVE OR WITH WALL BRACKETS PER MANUFACTURER'S INSTALLATION REQUIREMENTS.
- M16 ACCESS TO HVAC EQUIPMENT SHALL BE FROM LAY-IN CEILING. NO CEILING DEVICES SHALL BE PLACED IN THIS LOCATION. COORDINATE FINAL INSTALLED LOCATION SUCH THAT THE HVAC EQUIPMENT REMAINS ACCESSIBLE. VERIFY NO OTHER PIPING, ELECTRICAL CONDUIT, STRUCTURE, AND/OR CEILING SUPPORTS IMPEDE ACCESS IN ANY WAY. INSTALL HVAC EQUIPMENT WITHIN 14'-0" ABOVE FINISHED FLOOR OR 24" ABOVE CEILING FOR SERVICEABILITY.
- M17 SMOKE DETECTORS AND WIRING IN RETURN AIR DUCTS SHALL BE PROVIDED BY DIVISION 26 CONTRACTOR. SMOKE DETECTORS SHALL SHUT-DOWN UNIT UPON ALARM.
- M18 PROVIDE NEW INLINE EXHAUST FAN AS SCHEDULED FOR GENERAL RESTROOM EXHAUST. COORDINATE EXACT LOCATION PRIOR TO CONSTRUCTION.
- M19 EXHAUST FAN SERVES TO PROVIDE TRANSFER AIR ONLY AND SHALL DISCHARGE AIR INTO THE STOCKROOM.
- M20 INSTALL VAV POWER MODULE FOR CONTROL OF OFFICE VAV DIFFUSERS IN AN ACCESSIBLE LOCATION ABOVE THE CEILING. DIVISION 26 CONTRACTOR SHALL PROVIDE 120V POWER TO MODULE. REFER TO ELECTRICAL DRAWINGS FOR DETAILS.
- M21 PROVIDE NEW INLINE SUPPLY FAN AS SCHEDULED FOR OUTSIDE AIR. COORDINATE EXACT LOCATION PRIOR TO CONSTRUCTION.
- M22 PROVIDE NEW VAV BOX IN SUPPLY AIR DUCT SERVING FITTING ROOMS. INSTALL VAV BOX IN ACCESSIBLE LOCATION AND COORDINATE CONTROLS WITH EMS VENDOR PRIOR TO ORDERING.
- M30 ROUTE SHEET METAL RETURN AIR DUCT UP AND TOWARDS SALES FLOOR AS SHOWN. PROVIDE DUCT LINER IN RETURN AIR DUCTWORK FOR SOUND ATTENUATION.
- M31 ROUTE EXHAUST AIR DUCTWORK TO NEW INLINE EXHAUST FAN CONNECTED TO EXISTING BUILDING EXHAUST MAIN. COORDINATE EXACT ROUTING WITH STRUCTURE AND OTHER OBSTACLES. ADJUST ROUTING TO MATCH.
- M32 EXHAUST AIR DAMPERS SHALL BE ACCESSIBLE FROM BACK-OFF-HOUSE LAY-IN CEILING. COORDINATE FINAL INSTALLED LOCATION SUCH THAT THE DAMPERS REMAIN ACCESSIBLE.
- M33 DO NOT ROUTE DUCTWORK OVER ELECTRICAL EQUIPMENT. NOTIFY ENGINEER OF CONFLICTS IN FIELD.
- M36 ROUTE OUTSIDE AIR DUCT FROM IN-LINE SUPPLY FAN CONNECTED TO EXISTING OUTSIDE AIR DUCT MAIN TO UNIT RETURN PLENUM. REFER TO MECHANICAL DETAILS FOR SYSTEM INSTALLATION.
- M37 ROUTE DUCTWORK, CONDUIT, PIPING, ETC. ABOVE HVAC EQUIPMENT SERVICE AREAS.
- M44 ROUTE DUCTWORK AND BRANCH TAPS TIGHT TO CEILING. AVOID DUCTWORK VISIBILITY FROM SALES FLOOR AND DISPLAY WINDOWS.
- M46 LOCATE BALANCING DAMPER IN VERTICAL DUCTWORK.
- M64 LOUVERED DOOR FOR MAKEUP AIR BY GENERAL CONTRACTOR. REFER TO ARCHITECTURAL DRAWINGS FOR MORE INFORMATION.
- M66 COORDINATE LOCATION OF FITTING ROOM DIFFUSERS WITH LIGHTS, SPRINKLERS, SPEAKERS, AND OTHER CEILING DEVICES FOR A NEAT AND ORDERLY INSTALLATION. INSTALL CEILING DEVICES IN-LINE WITH EACH OTHER WHERE POSSIBLE.
- M68 INSTALL DUCT-MOUNTED DIFFUSERS WITH BLADES ANGLED AT 45° TOWARDS THE SALES FLOOR. DUCT-MOUNTED DIFFUSERS SHALL HAVE INTEGRAL DAMPER ADJUSTABLE FROM FACE OF DEVICE.
- M69 LOCATE EQUIPMENT ABOVE CEILING DEVICE SUCH THAT EQUIPMENT REMAINS ACCESSIBLE WITH REMOVAL OF DIFFUSER/GRILLE. PROVIDE DIFFUSER WITH SUFFICIENT FLEX DUCT TO ALLOW FOR REMOVAL OF DIFFUSER AS NECESSARY.
- M72 ROUTE REFRIGERANT PIPING FROM EXTERIOR CONDENSING UNIT TO LANDLORD PROVIDED PIPE CHASE AND ROUTE TO ASSOCIATED FCU. ROUTE PIPING IN A NEAT AND ORDERLY FASHION. COORDINATE ROOF-MOUNTED PIPE ROUTING STRUCTURE TO INSTALLATION.
- M73 ROUTE REFRIGERANT PIPING TIGHT TO DECK AND WITHIN WEB STRUCTURE, WHERE POSSIBLE. ROUTE PIPING IN A NEAT AND ORDERLY FASHION. COORDINATE ROUTING WITH OTHER DUCTWORK, CONDUIT, LIGHTS, STRUCTURE, ETC. PRIOR TO INSTALLATION.
- M74 LANDLORD PROVIDED REFRIGERANT PIPE CHASE.
- M80 DASHED LINE INDICATES ROOF LOCATION OF CONDENSING UNITS. COORDINATE FINAL INSTALLED LOCATION WITH LANDLORD.



1 HVAC PLAN
3/16" = 1'-0"

2 ENLARGED BACK OF HOUSE HVAC PLAN
1/4" = 1'-0"