

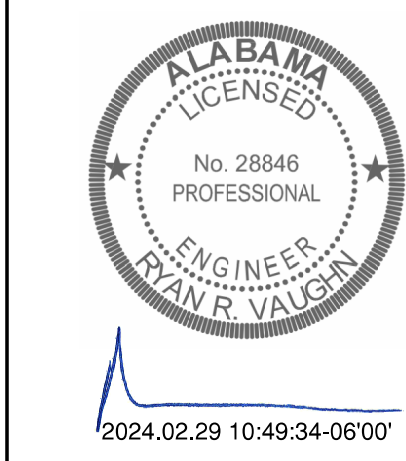
STIPULATION FOR REUSE
 THIS DRAWING WAS PREPARED FOR THE PROJECT DESCRIBED HEREIN. IT IS NOT TO BE REUSED FOR ANY OTHER PROJECT WITHOUT THE WRITTEN CONSENT OF HARRISON FRENCH & ASSOCIATES, L.P. THE ARCHITECTS AND ENGINEERS RESPONSIBLE FOR THE DESIGN OF THIS PROJECT SHALL BE THE ARCHITECTS AND ENGINEERS FOR THE PROJECT AND NOT THE PROJECT ARCHITECT OR ENGINEER.

WAWA
 STORE NUMBER: 5805
 FULL ADDRESS: 10000 W. WAWA RD
 MOBILE, AL 36685
 JOB NUMBER: 42-2348-015
 U59FB-R

ISSUE BLOCK

2	REV 2	09/15/23
5	REV 5	02/28/24

CHECKED BY: BT
 DRAWN BY: MJS
 DOCUMENT DATE: 02/28/24
 PROTO: U59FB-R
 PROTO CYCLE: 2023.Q1.G4
 PLAN ISSUE: CONSTRUCTION SET

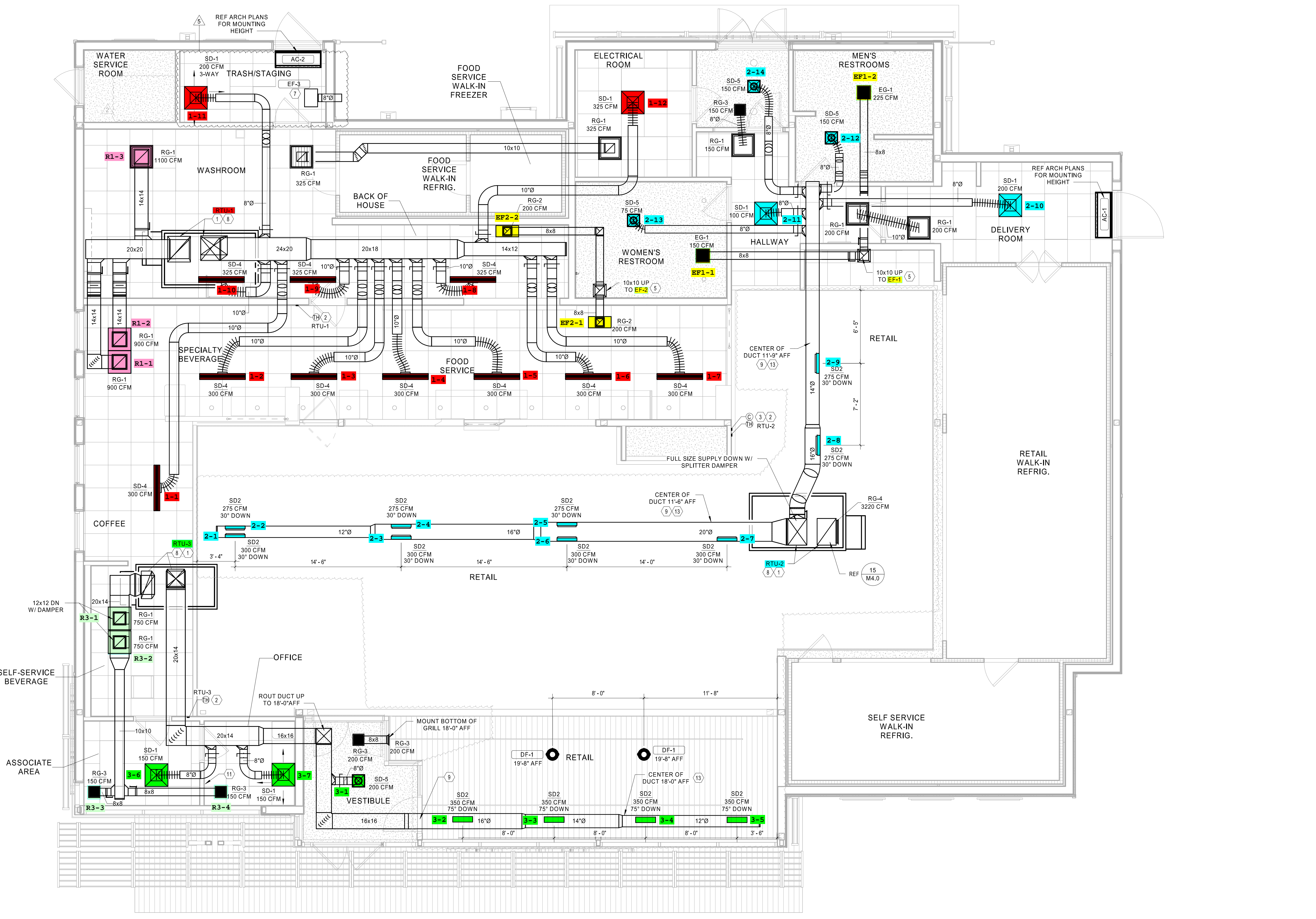


HVAC FLOOR PLAN
 SHEET: **M1.0**

- ### HVAC FLOOR PLAN KEY NOTES
- 1 SUPPLY AND RETURN DUCT UP TO RTU ON ROOF. TRANSITION AS REQUIRED. FIELD VERIFY DUCT ROUTING PRIOR TO FABRICATION. PROVIDE FLEX CONNECTION FOR VIBRATION ISOLATION.
 - 2 MOUNT REMOTE TEMPERATURE/HUMIDITY SENSOR IN AREA SHOWN AT 66" AFF. COORDINATE EXACT LOCATION WITH TENANT CONSTRUCTION MANAGER. THE ENTIRE CONTROL SYSTEM SHALL BE PROVIDED COMPLETE IN EVERY RESPECT BY THE MECHANICAL CONTRACTOR.
 - 3 WALL MOUNTED CO2 SENSOR TO RTU-2. SENSOR TO MONITOR CO2 LEVELS THROUGH REMOTE BAS. SENSOR BY WAWA BAS VENDOR.
 - 4 EXHAUST DUCT ROUTED TO FAN ON ROOF. COORDINATE ROUTING OF DUCT WITH ALL DISCIPLINES. PROVIDE TRANSITIONS AND FITTINGS AS REQUIRED.
 - 5 PROVIDE A CABINET STYLE EXHAUST FAN, INTERLOCK EXHAUST FAN WITH LIGHT SWITCH. RESTROOM EXHAUST DUCT SHALL BE GALVANIZED STEEL. PROVIDE SIDEWALL VENT WITH SCREEN AND FLAPPER DAMPER. CROWN MODEL 349 OR EQUAL. EXHAUST FAN SHALL MAINTAIN 10' CLEARANCE FOR ANY OUTSIDE AIR INTAKE. MUST MEET LOCAL CODE REQUIREMENTS. FIELD VERIFY ALL ROUTING AND REQUIREMENTS PRIOR TO BID. SEAL ALL PENETRATION WEATHER TIGHT. PRE-PAINT VENT COVER TO MATCH SIDING.
 - 6 HVAC UNIT MANUFACTURER TO PROVIDE 120V SMOKE DETECTORS FOR SUPPLY AND RETURN WITH AUXILIARY CONTACTS AS SHOWN. UPON ACTIVATION, THE SMOKE DETECTORS SHALL SHUT DOWN THE AIR DISTRIBUTION SYSTEM TO WHICH IT IS CONNECTED AND ACTIVATE A VISIBLE AND AUDIBLE SUPERVISORY SIGNAL AT A CONSTANTLY ATTENDED LOCATION VIA THE SPRINKLER/FIRE ALARM PANEL. SMOKE DETECTORS SHALL ALSO BE FURNISHED WITH WALL MOUNTED REMOTE TEST STATION WITH KEYPAD RESET. REMOTE SD TEST SUPERVISORY SIGNAL SHALL BE LED TYPE WITH AUDIBLE BEEPING ALERT.
 - 7 PROVIDE MCGILL AIRFLOW'S DOUBLE-WALL INSULATED SPIRAL DUCT OR EQUAL (MCGILL 614/829-1200). REFERENCE DRAWINGS FOR MOUNTING HEIGHT. PROVIDE DUCT AND FITTINGS WITH SLIP JOINT CONNECTION TYPE. FLANGE-TO-FLANGE CONNECTION TYPES ARE NOT ALLOWED.
 - 8 PROVIDE REMOTE TEST STATION FOR SMOKE DETECTORS WITH AUDIBLE AND VISUAL ALARM WITH KEYPAD RESET. MOUNT TEST STATION 48 INCHES AFF. MOUNT AUDIBLE AND VISUAL ALARM IN CONSTANTLY ATTENDED LOCATION. CONSTANTLY ATTENDED LOCATION IS NOT REQUIRED WHERE DUCT SMOKE DETECTOR ACTIVATES THE BUILDING'S ALARM SYSTEM.
 - 9 ENSURE NEAT AND CLEAN INSTALLATION OF ALL EXPOSED DUCTWORK AND AIR DEVICES. AT THE TERMINATION OF WORK, CLEAN ALL EXPOSED DUCTWORK AND AIR DEVICES. EXPOSED DUCTS AND AIR DEVICES SHALL BE FREE OF DIRT, DEBRIS, STICKERS, WRITING, SCRATCHES, OR OTHER FOREIGN OBJECTS OR CONTAMINANTS.

HVAC LEGEND

SYMBOL	DESCRIPTION
	NEW RECTANGULAR OR ROUND DUCT
	FLEXIBLE DUCT
	SUPPLY AIR DUCTWORK UP THROUGH PLAN
	RETURN AIR DUCTWORK UP THROUGH PLAN
	EXHAUST AIR DUCTWORK UP THROUGH PLAN
	90° ELBOW WITH TURNING VANES
	MANUAL AIR VOLUME CONTROL DAMPER
	4 WAY SUPPLY DIFFUSER
	3 WAY SUPPLY DIFFUSER
	2 WAY OPPOSED SUPPLY DIFFUSER
	2 WAY CORNER SUPPLY DIFFUSER
	RETURN AIR DEVICE
	EXHAUST AIR DEVICE
	AIR CURTAIN
	LINEAR SLOT DIFFUSER WITH PLENUM
	COMBINATION TEMPERATURE/HUMIDITY SENSOR
	TEMPERATURE SENSOR
	CO2 SENSOR
	TYPE MARK
	CFM
	MECHANICAL EQUIPMENT TAG
	CONDENSATE PIPING
	ROOF MOUNTED EXHAUST FAN
	INLINE EXHAUST FAN
	PACKAGED ROOFTOP AIR CONDITIONER



1 HVAC FLOOR PLAN
 1/4" = 1'-0"

U59FB-R, 02/28/24
 C:\Users\mjs\OneDrive\Documents\2023\Drawings\42-2348-015\WAWA_Mobile_AL_M1.0_HVAC_FloorPlan.dwg
 M1.0-HVAC FLOOR PLAN-REV 5

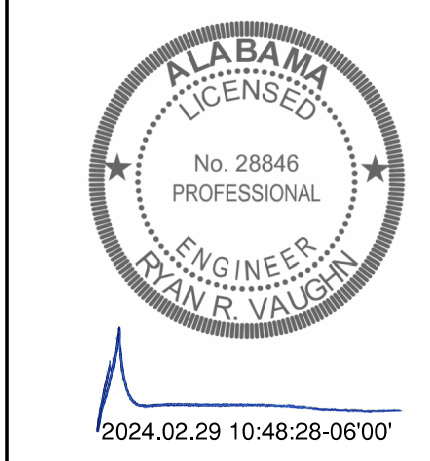
HVAC ROOF PLAN KEY NOTES	
#	NOTE
1	CONTRACTOR SHALL REVIEW ELECTRICAL POWER REQUIREMENTS FOR MECHANICAL EQUIPMENT THAT ARE SCHEDULED ON THE ELECTRICAL DRAWINGS AND VERIFY THAT THEY MATCH PRIOR TO ORDERING EQUIPMENT. DO NOT PURCHASE MOTORS OR ELECTRICAL EQUIPMENT UNTIL POWER CHARACTERISTICS AVAILABLE AT BUILDING HAVE BEEN CONFIRMED BY CONTRACTOR.
2	PROVIDE NEW ROOFTOP UNIT WITH PRE-FABRICATED MINIMUM 14 INCH HIGH INSULATED ROOF CURB. MAINTAIN MINIMUM HEIGHT OF 8" FROM ROOF SURFACE. TIE DOWN TO CURB USING LENOX® ROOF CLIPS APPROVED FOR LOCAL WIND ZONE. FIELD COORDINATE SIZE WITH MANUFACTURER REQUIREMENTS PRIOR TO BID.
3	MECHANICAL TO ENSURE RTU HAS FAN SENSOR (OVERFLOW SWITCH) INSIDE ROOFTOP UNIT DRAIN PAN. THIS DEVICE SHALL SHUT OFF THE EQUIPMENT SERVED IN THE EVENT THAT THE PRIMARY DRAIN BECOMES RESTRICTED.
4	COORDINATE ROOFTOP EQUIPMENT LOCATION AND OPENING IN THE ROOF WITH THE STRUCTURAL MEMBERS PRIOR TO CUTTING DECK.
5	INSTALLATION OF EQUIPMENT SHALL COMPLY WITH EQUIPMENT MANUFACTURER'S INSTALLATION AND CLEARANCE REQUIREMENTS TO ALLOW FOR INSPECTION, SERVICE, REPAIR OR REPLACEMENT.
6	CONDENSATE PIPING IS LOCATED ON ROOF. PROVIDED BY MECHANICAL CONTRACTOR. PROVIDE SUPPORTS EVERY 4'. ROUTE TO NEAREST ROOF DRAIN/SCUPPER.
7	REFRIGERATION EQUIPMENT SHALL BE PROVIDED BY OTHERS.
8	ICE MACHINE CONDENSERS ON PRE-ENGINEERED EQUIPMENT RACK. REF 4-44-0.

STIPULATION FOR REUSE
 THIS DRAWING WAS PREPARED FOR THE PROJECT OF WAWA AT WATSONVILLE, ARKANSAS. IT IS TO BE USED ONLY FOR THE PROJECT AND NOT FOR ANY OTHER PROJECT. THE CONTRACTOR SHALL BE RESPONSIBLE FOR VERIFYING THE ACCURACY OF ALL INFORMATION PROVIDED BY THE ARCHITECT AND ENGINEER. THE CONTRACTOR SHALL BE RESPONSIBLE FOR VERIFYING THE ACCURACY OF ALL INFORMATION PROVIDED BY THE ARCHITECT AND ENGINEER. THE CONTRACTOR SHALL BE RESPONSIBLE FOR VERIFYING THE ACCURACY OF ALL INFORMATION PROVIDED BY THE ARCHITECT AND ENGINEER. THE CONTRACTOR SHALL BE RESPONSIBLE FOR VERIFYING THE ACCURACY OF ALL INFORMATION PROVIDED BY THE ARCHITECT AND ENGINEER.

WAWA
 STORE NUMBER: 5805
 PROJECT NUMBER: 2023.Q1.G4
 MOBILE: 36865
 JOB NUMBER: 42-23-01015

ISSUE BLOCK	
REV	DATE
5	02/28/24

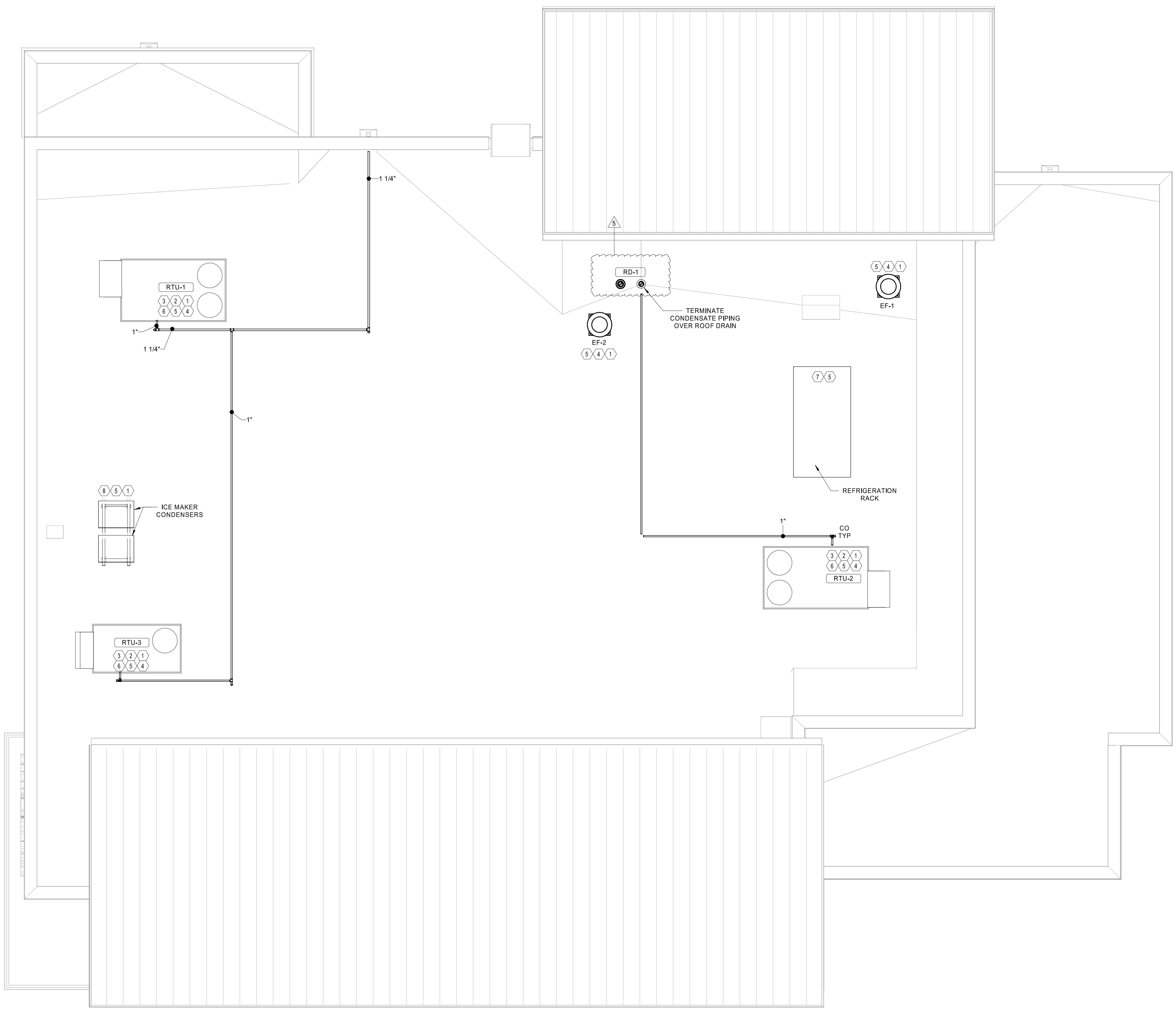
CHECKED BY: BT
 DRAWN BY: MJS
 DOCUMENT DATE: 02/28/24
 PROTO: U59FB-R
 PROTO CYCLE: 2023.Q1.G4
 PLAN ISSUE: CONSTRUCTION SET



2024.02.29 10:48:28-0600'

HVAC ROOF PLAN

SHEET: M2.0



1 ROOF PLAN MECHANICAL
 1/4" = 1'-0"

2024.02.29 10:48:28-0600'
 C:\Users\mvaldes\OneDrive\Documents\2024\Draw\Projects\42-23-01015_Wawa_Mobile_Ar\42-23-01015_HFA_Architect\Roof Plan\MECH 1
 HFA-AC-HVAC-ROOF PLAN-REV 5

VENTILATION SCHEDULE

OCCUPANCY	AREA (SQFT) A ₁	OCCUPANT DENSITY (PEOPLE PER 1000 SQFT) P ₁	ZONE POPULATION P ₂	PEOPLE OUTDOOR RATE (CFM/PERSON) R ₁	PEOPLE REQUIRED VENTILATION (CFM) P ₁ R ₁	AREA OUTDOOR RATE (CFM/SQFT) R ₂	AREA REQ'D VENTILATION (CFM) A ₁ R ₂	TOTAL CFM PEOPLE & AREA V ₁ +V ₂	ZONE EFFECTIVENESS E ₂	TOTAL OA REQUIRED V ₁ /E ₂ (RTU-2, 3)	TOTAL OA REQUIRED V ₁ /E ₂ (RTU-1)				
FRONT VESTIBULE	105	0	0	10	0	0.06	6.3	6.3	0.8	8					
FRONT SALES	370	15	5	7.5	39	0.12	45	84	0.8	105					
SALES	1745	15	26	7.5	195	0.12	210	405	0.8	506					
FOOD SERVICE	620	10	6	7.5	45	0.12	75	120	0.8		150				
OFFICE	60	5	1	5	5	0.06	3.6	8.6	0.8	11					
ASSOCIATES	80	5	1	5	5	0.06	4.8	9.80	0.8	13					
MENS	140	0	0	0	0	0.00	0.00	0.00	0.8		0				
WOMENS	130	0	0	0	0	0.00	0.00	0.00	0.8		0				
BACK OF HOUSE	510	10	5	7.5	37.5	0.12	61.2	98.7	0.8		124				
JANITORS	80	0	0	0	0	0	0	0	0.8		0				
ELECTRICAL ROOM	125	0	0	0	0	0	0	0	0.8		0				
REAR VESTIBULE	95	0	0	0	0	0.06	5.70	5.70	0.8		8				
RECEIVING	175	2	0	10	0	0.12	21	21	0.8		27				
OUTSIDE AIR CALCULATION BASED ON THE 2015 INTERNATIONAL MECHANICAL CODE VENTILATION REQUIREMENTS										REQ'D OA	635	276	PROVIDED OA	580	700

FAN SCHEDULE

KEY: CENT-CENTRIFUGAL; PROP-PROPELLER; F.C-FORWARD CURVE; B.J.-BACKWARD INCLINED; A.F-AIR FOIL

TAG	MODEL	TYPE	LOCATION	CFM	TOTAL S.P. (IN H ₂ O)	HP	FAN RPM	DRIVE		DAMPER		ELECTRICAL DATA		WEIGHT (LBS) WICURB	REMARKS	DESCRIPTION
								ALU/ST YIELD	DIRECT	GRAVITY	MOTOR OPERATED	FLA	VOLTS			
EF-1	GREENHECK GB-99-4	CENTRIFUGAL	ROOF	375	0.375	1/6	1334	X	-	X	-	120	1	59	1,2,3,4	MENS/WOMENS RR
EF-2	GREENHECK GB-99-4	CENTRIFUGAL	ROOF	400	0.375	1/6	1334	X	-	X	-	120	1	59	1,2,3,4	BACK OF HOUSE EXHAUST
EF-3	GREENHECK SP-8200	FORWARD CURVE	CEILING	200	0.5	-	-	-	X	X	-	25W	1	14	1,3,4	TRASH ROOM EXHAUST

NOTES:
1. PROVIDE DISCONNECT SWITCH.
2. PROVIDE 12" HIGH PREFABRICATED INSULATED ROOF CURB.
3. MECHANICAL CONTRACTOR TO PROVIDE EXHAUST FAN, & WIRED SPEED CONTROLLER.
4. WIRE FOR CONTINUOUS OPERATION.

RTU SCHEDULE (ELECTRIC COOLING/ELECTRIC HEAT)

	RTU - 1	RTU - 2	RTU - 3
Mark	RTU-1	RTU-2	RTU-3
Model	LCT1204HE	LCT1204HE	LCT0604HE
Voltage	208V/3PH/60Hz	208V/3PH/60Hz	208V/3PH/60Hz
Tons	10.0	10.0	5.0
MCA (amp)	73	73	68
MOCP (amp)	80	80	70
Total Weight (lb)	1438	1438	892
Ambient (°F)	95.0	95.0	95.0
SEER	---	---	17.1
IEER	15.5	15.5	---
EER	12.3	12.3	12.7
Outdoor Air Flow (cfm)	700	380	200
Supply Air Flow (cfm)	3600	3250	2000
External Supply Static Pressure (in.WC)	1.00	1.00	0.50
Nominal Power (hp)	3.75	3.75	1.5
Total (MBH)	119.0	119.0	63.0
Sens (MBH)	82.7	82.7	47.2
Entering Air DB (°F)	80	80	80
Entering Air WB (°F)	67	67	67
Leaving Air DB (°F)	59.4	59.6	57.4
Leaving Air WB (°F)	56.6	56.6	56.6
Power (kW)	22.5	22.5	22.5
Heat Rise (°F)	14.8	14.8	26.7

- NOTES:
1- PROVIDE CO2 SENSOR FOR RTU2 ONLY, SENSOR TO BE INTERLOCKED WITH GAS.
2- PROVIDE HUMIDITROL HOT GAS REHEAT.
3- PROVIDE REMOTE WALL MOUNTED COMBINATION TEMPERATURE/HUMIDITY SENSOR.
4- PROVIDE WITH 2" FACTORY PLEATED MERV 8 FILTERS.
5- PROVIDE WITH 18" ROOF CURB.
6- PROVIDE WITH FACTORY INSTALLED HACR CIRCUIT BREAKERS AND DISCONNECT.
7- PROVIDE WITH FACTORY INSTALLED 15A GFCI SERVICE OUTLET, EC TO PROVIDE FIELD WIRING.
8- PROVIDE WITH FACTORY INSTALLED DISCONNECT.
9- PROVIDE WITH FACTORY INSTALLED SINGLE ENTHALPY CONTROLLED ECONOMIZER AND UNIT POWERED EXHAUST FAN.
10- PROVIDE WITH FACTORY INSTALLED DIRTY FILTER SWITCH.
11- PROVIDE WITH FACTORY INSTALLED DRAIN PAN OVERFLOW SWITCH.
12- PROVIDE WITH FACTORY INSTALLED SUPPLY AND RETURN SMOKE DETECTORS.
13- PROVIDE WITH FACTORY APPLIED CORROSION PROTECTION ON INDOOR EVAPORATOR AND REHEAT COIL, AND OUTDOOR CONDENSER COIL.
14- PROVIDE WIND/SEISMIC RESTRAINT BRACKETS RATED FOR HIGH WINDS OF 154 MPH.

HVAC GENERAL NOTES:

- REFER TO WRITTEN BOOK SPECIFICATIONS FOR ADDITIONAL INFORMATION.
- THE WORK TO BE DONE UNDER THESE SPECIFICATIONS AND THE DRAWINGS CONSISTS OF FURNISHING ALL EQUIPMENT, MATERIALS, LABOR AND SERVICES, AND PERFORMING ALL OPERATIONS TO COMPLETE THE MECHANICAL CONSTRUCTION WORK FOR THIS PROJECT. ANY WORK NOT SPECIFICALLY COVERED BY THESE SPECIFICATIONS OR INDICATED ON THE MECHANICAL/ELECTRICAL/PLUMBING PLANS, BUT NECESSARY TO COMPLETE OR PERFECT ANY PART OF THIS INSTALLATION IN A SUBSTANTIAL MANNER, SHALL BE PROVIDED WITHOUT EXTRA COST TO OWNER.
 - THE TERM "FURNISH" SHALL MEAN TO OBTAIN AND SUPPLY TO THE JOB SITE. THE TERM "INSTALL" SHALL MEAN TO FIX IN POSITION AND CONNECT FOR USE. THE TERM "PROVIDE" SHALL MEAN TO FURNISH AND INSTALL. THE TERM "MECHANICAL WORK" OR "WORK" SHALL MEAN ALL LABOR, MATERIAL, EQUIPMENT, SCAFFOLDING, RIGGING, TOOLS, SUPERVISION, SERVICES AND OTHER INCIDENTALS NECESSARY FOR COMPLETE AND OPERABLE INSTALLATION.
 - THE CONTRACTOR SHALL FURNISH AND INSTALL ALL EQUIPMENT, MATERIALS AND LABOR TO PROVIDE A COMPLETE AND OPERATIONAL SYSTEM AS INDICATED ON THE DRAWING DOCUMENTS.
 - CONTRACTOR SHALL PROVIDE ALL ROOFING OPENINGS, FLASHINGS, AUXILIARY STEEL, THREADED RODS, VIBRATION ISOLATORS, TURNBUCKLES, ETC. TO SUPPORT HIS EQUIPMENT ON OR FROM THE STRUCTURE.
 - ANY CHANGES AND/OR MODIFICATIONS MUST BE REVIEWED AND APPROVED BY THE ENGINEER OR OWNER'S REPRESENTATIVE PRIOR TO CONSTRUCTION.
 - REMOVE ALL TRASH, DEBRIS AND DEMOLITION MATERIAL FROM PREMISES AT THE END OF EACH WORK DAY.
 - SCHEDULE ALL WORK, CUTTING AND BUILDING SERVICE INTERRUPTIONS WITH BUILDING OWNER AND CONSTRUCTION MANAGER, PRIOR TO COMPLETING WORK.
 - FIELD ADJUST THE DIRECTION OF BLOW FOR ALL SUPPLY AIR DEVICES SO THAT THE DEVICES DO NOT BLOW DIRECTLY INTO SOFFITS, CURTAIN WALLS, REFRIGERATED CASES OR EXHAUST HOODS.
 - ALL NEW AND EXISTING PIPES AND DUCTS SHALL HAVE UL FIRE RATED SLEEVES AND/OR FIRE RATED DAMPERS, WHEN PASSING THROUGH FIRE RATED CONSTRUCTION.
 - COORDINATE LOCATION OF NEW DUCTWORK, AIR DEVICES AND EQUIPMENT WITH LIGHT FIXTURES, SPRINKLER PIPING AND HYDRONIC PIPING.
 - TEMPERATURE AND HUMIDITY SENSORS SHALL BE INSTALLED 5' ABOVE FINISHED FLOOR UNLESS NOTED OTHERWISE ON PLAN. COORDINATE FINAL LOCATIONS WITH EQUIPMENT, FURNITURE, TENANT AND ARCHITECT PRIOR TO INSTALLATION.
 - VERIFY ALL EQUIPMENT VOLTAGES, WIRING REQUIREMENTS, AND REQUIRED BREAKER SIZES WITH THE ELECTRICAL CONTRACTOR PRIOR TO ORDERING EQUIPMENT.
 - THE MECHANICAL CONTRACTOR SHALL HAVE A QUALIFIED HVAC TECHNICIAN FROM THE UNIT MANUFACTURER PROVIDE AN EQUIPMENT OPERATION CHECK AFTER UNIT START-UP AND PRIOR TO CERTIFIED AIR BALANCING. THE CERTIFICATION, SIGNED BY THE TECHNICIAN, MUST BE INCLUDED IN THE GENERAL CONTRACTOR CLOSING DOCUMENTS FOR THE STORE.
 - ALL DRAWINGS ARE CONCEPTUAL AND SCHEMATIC AND ARE INTENDED FOR USE AS A DESIGN/BUILD GUIDELINE. THE CONTRACTORS ARE RESPONSIBLE FOR VERIFYING ALL FIELD CONDITIONS AND ADJUSTING OR MODIFYING THE SPECIFIC ELEMENTS OF THEIR WORK AS REQUIRED TO MEET THE DESIGN INTENT. THE CONTRACTORS ARE RESPONSIBLE FOR THE FOLLOWING:
A. COORDINATION WITH OTHER TRADES.
B. PROVIDING ADDITIONAL DRAWINGS, CALCULATIONS AND OTHER DOCUMENTATION REQUIRED FOR THE BUILDING DEPARTMENT. THE MECHANICAL CONTRACTOR SHALL DOCUMENT THE INSTALLATION AND PROVIDE ALL TESTS REQUIRED TO SUBSTANTIATE CODE COMPLIANCE AS REQUIRED BY THE BUILDING DEPARTMENT AND LOCAL INSPECTOR. CONTRACTOR SHALL SUBMIT FINAL AS-BUILT DRAWINGS TO BUILDING DEPARTMENT FOR RECORD AT COMPLETION.
 - MECHANICAL PLANS ARE DIAGRAMMATIC IN NATURE, NOT SHOWING EVERY ITEM IN EXACT LOCATION OR DETAIL. MEASUREMENTS AND LOCATIONS MUST BE FIELD VERIFIED AND COORDINATED WITH ARCHITECTURAL, HVAC, FIRE PROTECTION, STRUCTURAL, ELECTRICAL AND OTHER BUILDING DRAWINGS.
 - CONTRACTOR TO INCLUDE IN BID ALL COSTS TO MAKE FIELD COORDINATION AND ADJUSTMENT TO DUCTWORK FOR FIT INTO EXISTING STRUCTURE. CONTRACTOR SHALL VERIFY AND FIELD COORDINATE FINAL LOCATION OF MECHANICAL EQUIPMENT.
 - CONTRACTOR SHALL SECURE AND PAY FOR ALL REQUIRED PERMITS AND INSPECTIONS AND PERFORM ALL TESTS CALLED FOR OR REQUIRED AS A PART OF HIS WORK. FURNISHED APPROVED CERTIFICATE OF FINAL INSPECTION, AND TURN OVER TO OWNER AT COMPLETION OF PROJECT.
 - CONTRACTOR SHALL BE RESPONSIBLE FOR COORDINATION OF ALL TRADES, LANDLORD REQUIREMENTS, CEILING HEIGHTS AND EXISTING STRUCTURAL CONDITIONS PRIOR TO FABRICATION OF ANY DUCTWORK OR ORDERING OF ANY EQUIPMENT.
 - ALL INSTALLATION OF THE MECHANICAL EQUIPMENT SHALL COMPLY WITH THE MANUFACTURER'S SPECIFICATION AND CLEARANCE REQUIREMENTS.
 - ALL HVAC WORK SHALL BE IN ACCORDANCE WITH NFA 90A, 90B, 96, 54 AND NEC 101, LIFE SAFETY CODE.
 - INSTALLATION SHALL COMPLY WITH ALL LOCAL, STATE AND NATIONAL CODES, AND WITH LATEST ASHRAE PUBLICATIONS. WORK SHALL BE NEAT AND WORKMANSHIP SHALL BE ACCEPTABLE TO BUILDING STANDARDS.
 - CONTRACTOR SHALL FURNISH AND INSTALL A COMPLETE TEMPERATURE CONTROL SYSTEM TO INCLUDE: PANELS, MODULES, RELAYS, WIRING, THERMOSTATS, SENSORS, DAMPERS, ACTUATORS AND ALL MISCELLANEOUS ITEMS AS REQUIRED TO FULFILL THE DESIGN INTENT AS INDICATED ON THE PLANS AND IN THE CODED NOTES. THERMOSTATS AND SENSORS SHALL BE LOCATED GENERALLY AS SHOWN BUT THEIR EXACT LOCATION SHALL BE FIELD COORDINATED TO AVOID INTERFERENCE WITH WALL MOUNTED WORK.
 - DURING THE BIDDING PERIOD, EACH CONTRACTOR SHALL VISIT THE SITE TO DETERMINE CONDITIONS AFFECTING THE WORK. BIDS SHALL REFLECT AS EVIDENCE OF KNOWLEDGE OF EXISTING CONDITIONS AND ANY MODIFICATIONS WHICH ARE REQUIRED TO MEET THE INTENT OF THE DRAWINGS AND SPECIFICATIONS. FAILURE TO VISIT THE SITE DOES NOT RELIEVE THE CONTRACTOR OF RESPONSIBILITY IN PERFORMANCE OF WORK REQUIRED CONDITIONS IN EVIDENCE THEREBY SHALL NOT BE JUSTIFICATION FOR ADDITIONAL COMPENSATION.
 - THE EQUIPMENT SHALL BE LOCATED TO ALLOW FOR EASY ACCESS FOR SERVICING, ADJUSTING OR MAINTENANCE AND SPACE FOR REMOVAL OF INTERNAL ASSEMBLIES. PROVIDE MINIMUM CLEARANCES FOR ALL EQUIPMENT PER THE MANUFACTURER'S RECOMMENDATIONS.
 - PROVIDE ALL CONTROL EQUIPMENT, MOTOR STARTERS, RELAYS, LINE VOLTAGE CONTROLS, TRANSFORMERS, LOW VOLTAGE CONTROLS, AND DEVICES NECESSARY FOR THE COMPLETE OPERATION OF THE HEATING AND AIR CONDITIONING AND VENTILATING SYSTEM.
 - ALL LOW VOLTAGE WIRING AND CONDUIT REQUIRED FOR MECHANICAL EQUIPMENT SHALL BE FURNISHED AND INSTALLED BY MECHANICAL CONTRACTOR.
 - PROVIDE ALL FANS AND ROOFTOP UNITS WITH RELAYS TO SHUT DOWN WHEN FIRE ALARM IS INITIATED. COORDINATE LOCATION WITH THE ELECTRICAL CONTRACTOR FOR THE FIRE ALARM WIRING.
 - IN THE EVENT OF FAN SHUT DOWN, ALL DUCT MOUNTED DETECTORS SHALL REMAIN IN OPERATION.
 - CONTRACTOR TO PROVIDE TENANT WITH AS-BUILT DRAWINGS OF ALL CHANGES OR MODIFICATIONS MADE IN THE FIELD, TO THE ORIGINAL SET OF CONSTRUCTION DOCUMENTS, FOR TURN-OVER TO THE ARCHITECT/ENGINEER UPON COMPLETION OF THE PROJECT. PROVIDE ALL EQUIPMENT SHOP DRAWINGS, INFORMATION ON CONTROL DEVICES, CONTROL WIRING DIAGRAMS AND OTHER PERTINENT INFORMATION AT COMPLETION OF PROJECT.
 - IT IS THE CONTRACTOR'S RESPONSIBILITY TO ENSURE THAT THE MECHANICAL EQUIPMENT COMPONENTS ARE INSTALLED AT LOCATIONS AND ELEVATIONS WHICH MAKE THEM READILY ACCESSIBLE FOR ROUTINE MAINTENANCE WITHOUT REQUIRING ANY EXTRAORDINARY MEASURES.
 - THE MECHANICAL CONTRACTOR SHALL BE RESPONSIBLE FOR ADMINISTERING ALL WARRANTIES ON EQUIPMENT WHICH HE INSTALLS. THIS INCLUDES ALL CONDENSERS, REFRIGERANT PIPES, AND OTHER ITEMS FURNISHED BY OTHERS AS WELL AS THOSE FURNISHED BY HIM.
 - FIELD VERIFY THE EXACT LOCATION OF ALL EQUIPMENT WITH ARCHITECT/OWNER PRIOR TO INSTALLATION. INFORM OWNER OF ANY EQUIPMENT ITEMS THAT REQUIRE RELOCATION.
 - PROVIDE VIBRATION ISOLATION DEVICES AND FLEXIBLE CONNECTIONS TO ALL MOVING MACHINERY.
 - DUCT DIMENSIONS SHOWN ARE INSIDE NET DIMENSIONS, ADD TO SHEET METAL SIZE FOR INSULATION THICKNESS. HOLD DUCTWORK TIGHT TO UNDERSIDE OF STRUCTURE UNLESS OTHERWISE NOTED OR REQUIRED BY FIELD CONDITIONS. IT IS REQUIRED TO COORDINATE EXACT MOUNTING HEIGHT IN FIELD WITH ARCHITECT. OUTSIDE AIR AND RELIEF AIR DUCTS SHALL BE SHEET METAL AND BE EXTERNALLY INSULATED WITH OWENS CORNING TYPE 150 2" THICK, FOIL FACED FIBROUS GLASS BLANKET INSULATION WITH A MIN R-6.4 VALUE. EQUAL IS APPROVED. INSULATION WRAP SHALL BE SEALED WITH FAB AND MASTIC.
 - ALL DUCTWORK SHALL MAINTAIN SYSTEM PRESSURE. THE AIR DISTRIBUTION COMPONENTS SHALL BE SEALED IN ACCORDANCE WITH SMACNA REQUIREMENTS. TWO INCH PRESSURE CLASS.
 - DUCT INSULATION CLOSURE SYSTEM SHALL CONSIST OF GLASS FABRIC AND NON MIGRATING MASTIC. SEAL AIR TIGHT.
 - ALL FLEXIBLE DUCTS SHALL BE SUPPORTED EVERY 4'-0" WITH 2" WIDE GALVANIZED STEEL BANDS. MINIMUM ONE PER EACH SECTION OF FLEXIBLE DUCT. MAXIMUM LENGTH OF FLEX DUCT SHALL BE 8'-0" LONG AND SHALL MEET INSTALLATION AND MATERIAL REQUIREMENTS OF LOCAL CODES.
 - ALL BRANCH TAKE-OFFS SHALL BE PROVIDED WITH MANUAL BALANCING DAMPERS LOCATED ABOVE ACCESSIBLE CEILINGS AS CLOSE TO MAIN TRUNK AS POSSIBLE. WHEN AIR DEVICE IS NOT ACCESSIBLE PROVIDE DAMPER AT AIR DEVICE.
 - CONTRACTOR IS RESPONSIBLE FOR COORDINATING BOX-OUT LOCATIONS FOR ALL DRYWALL MOUNTED AIR DEVICES WITH GENERAL CONTRACTOR AND CEILING FRAMING. CONTRACTOR SHALL COORDINATE ALL DUCT AND DIFFUSER LOCATIONS WITH LIGHTING LAYOUTS AS REQUIRED.
 - ALL SUPPLY DUCT BENDS FROM THE VERTICAL TO HORIZONTAL AND ANGLED TURNS OF DUCTWORK SHALL HAVE TURNING VANES INSTALLED.
 - PROVIDE SMOOTH TRANSITIONS AT EQUIPMENT AND AIR DEVICES TO MATCH CONNECTION SIZES. ALL DUCTWORK SHALL BE SHEET METAL FABRICATED IN ACCORDANCE WITH ASHRAE GUIDE AND SMACNA MANUAL LATEST EDITIONS.
 - THE CONTRACTOR SHALL ENGAGE AN INDEPENDENT AIR BALANCING AGENCY SUBSEQUENT TO THE APPROVAL OF THE OWNERS REPRESENTATIVE. THE T&B AGENCY CAN ONLY ACT AS HIS OWN REPORTING AGENCY IF SUITABLE INSTRUMENTS HEREINAFTER REQUIRED ARE DEMONSTRATED TO BE PART OF HIS NORMAL PROCEDURE TO THE SATISFACTION OF THE OWNERS REPRESENTATIVE. THE T&B AGENCY SHALL BE ABC OR NEBB CERTIFIED. CONTRACTOR SHALL PROVIDE LANDLORD WITH WATER AND AIR BALANCE REPORT.
 - IT SHALL BE THE RESPONSIBILITY OF THIS T&B AGENCY TO PROVIDE THE LOCAL BUILDING DEPARTMENT AND OWNER WITH PROPER TEST & BALANCE DATA ON A88C OR NEBB FORMS.
 - BUILDING AIR SYSTEMS SHALL BE BALANCED PER DATA INCLUDED ON THE DRAWINGS TO ACHIEVE RELATIVE AIR VOLUMES AS INDICATED ON THE DRAWINGS AND SCHEDULED HEREIN. REFER TO AIR FLOW DIAGRAM DETAIL.
 - ALL NEW SUPPLY AND RETURN DUCTWORK SHALL BE GALVANIZED STEEL, EXTERNALLY INSULATED WITH 1.5" FIBERGLASS DUCTWRAP. INSTALLED R VALUE SHALL BE A MINIMUM OF 6. SEAL ALL JOINTS AND SEAMS PRIOR TO INSULATING DUCTWRAP. SEAL WRAP WITH GLASS FABRIC AND MASTIC MEETING UL 181.
 - PROVIDE VOLUME BALANCING DAMPER AT ALL NINETY-DEGREE DUCT TAKE-OFFS. THIS ALSO APPLIES TO TAKE-OFFS TO DIFFUSERS OR REGISTERS LOCATED DIRECTLY UNDER DUCTS.
 - ALL RESTROOM MAKE-UP AIR SHALL BE GALVANIZED STEEL TRANSFER DUCTS WITH ZERO LEAKAGE BACKDRAFT DAMPERS AND DOOR UNDERCUTS.
 - REFRIGERANT PIPE SIZING AND ROUTING DESIGN SHALL BE THE RESPONSIBILITY OF THE CONTRACTOR. CONTRACTOR SHALL TAKE INTO ACCOUNT LENGTH OF RUN AND FIELD CONDITIONS WHEN SIZING THE PIPING TO ENSURE ALL LOSSES ARE ACCOUNTED FOR.
 - MECHANICAL CONTRACTOR TO FIELD VERIFY WITH STRUCTURE ALL DUCT ROUTING PRIOR TO FABRICATION.
 - PROVIDE ACCESS TO ALL COMPONENTS REQUIRING PERIODIC INSPECTION AND SERVICE THAT ARE LOCATED WITHIN THE SPACE OR REQUIRE ACCESS THROUGH THE SPACE. LABEL ACCESS DOORS AND PANELS OR CEILING TILES UTILIZED FOR ACCESS WITH THE NAME OF THE HIDDEN COMPONENT(S), DEMONSTRATE ACCESS TO ALL HIDDEN COMPONENTS FOR THE FIELD REPRESENTATIVE PRIOR TO OCCUPANCY.
 - ALL ROOF TOP UNITS AND ROOF TOP EXHAUST FANS SHALL BE LABELED TO INDICATE MARK NUMBERS, PANEL OF CIRCUIT ORIGIN, AND CIRCUIT NUMBER. LABELS SHALL BE SUNLIGHT RESISTANT AND SHALL BE IN PLACE PRIOR TO INSPECTION.
 - PROVIDE ALL NECESSARY TRANSITIONS AND OFFSETS IN SUPPLY AND RETURN AIR DUCTWORK TO AVOID STRUCTURE, WATER, GAS, SPRINKLER PIPING, OTHER DUCTWORK, OTHER TRADES, ETC. DUCTWORK SHALL BE INSTALLED AS HIGH AS CONDITIONS WILL ALLOW.
 - ENSURE NEAT AND CLEAN INSTALLATION OF ALL EXPOSED DUCTWORK AND AIR DEVICES. AT THE TERMINATION OF WORK, CLEAN ALL EXPOSED DUCTWORK AND AIR DEVICES. EXPOSED DUCTS AND AIR DEVICES SHALL BE FREE OF DIRT, DEBRIS, STICKERS, WRITING, SCRATCHES, OR OTHER FOREIGN OBJECTS OR CONTAMINANTS.

HVAC AIR DEVICE SCHEDULE

TYPE MARK	MFG	MODEL	SERVICE	DESCRIPTION	MOUNTING TYPE	MATERIAL	NECK SIZE	FACE SIZE	NOTES
RG-1	PRICE	630FF	EXHAUST	LOUVERED	SURFACE	ALUMINUM	SEE PLAN	12X12	4
EG-1	PRICE	630FF	RETURN	LOUVERED	LAY-IN	ALUMINUM	22X22	24X24	4
RG-2	PRICE	630FF	EXHAUST	LOUVERED	LAY-IN	ALUMINUM	22X10	24X12	4
RG-3	PRICE	630FF	VARIES	LOUVERED	REF. PLANS	ALUMINUM	10X10	12X12	4
RG-4	PRICE	80	RETURN	1"x1" EGG CRATE	DUCT	ALUMINUM	24X20	26X22	4
SD-1	PRICE	AMD	SUPPLY	LOUVERED	LAY-IN	ALUMINUM	SEE PLAN	24X24	1,6
SD-2	PRICE	SDGE	SUPPLY	LOUVERED	DUCT	ALUMINUM	20X4	22x6	7,8,9
SD-3	PRICE	620S	SUPPLY	LOUVERED	SIDEWALL	ALUMINUM	12X4	14x6	7
SD-4	PRICE	TBD4	SUPPLY	LOUVERED	LAY-IN	ALUMINUM	10"0	48" LENGTH	2,3
SD-5	PRICE	AMD	SUPPLY	LOUVERED	SURFACE	ALUMINUM	SEE PLAN	12X12	5,6

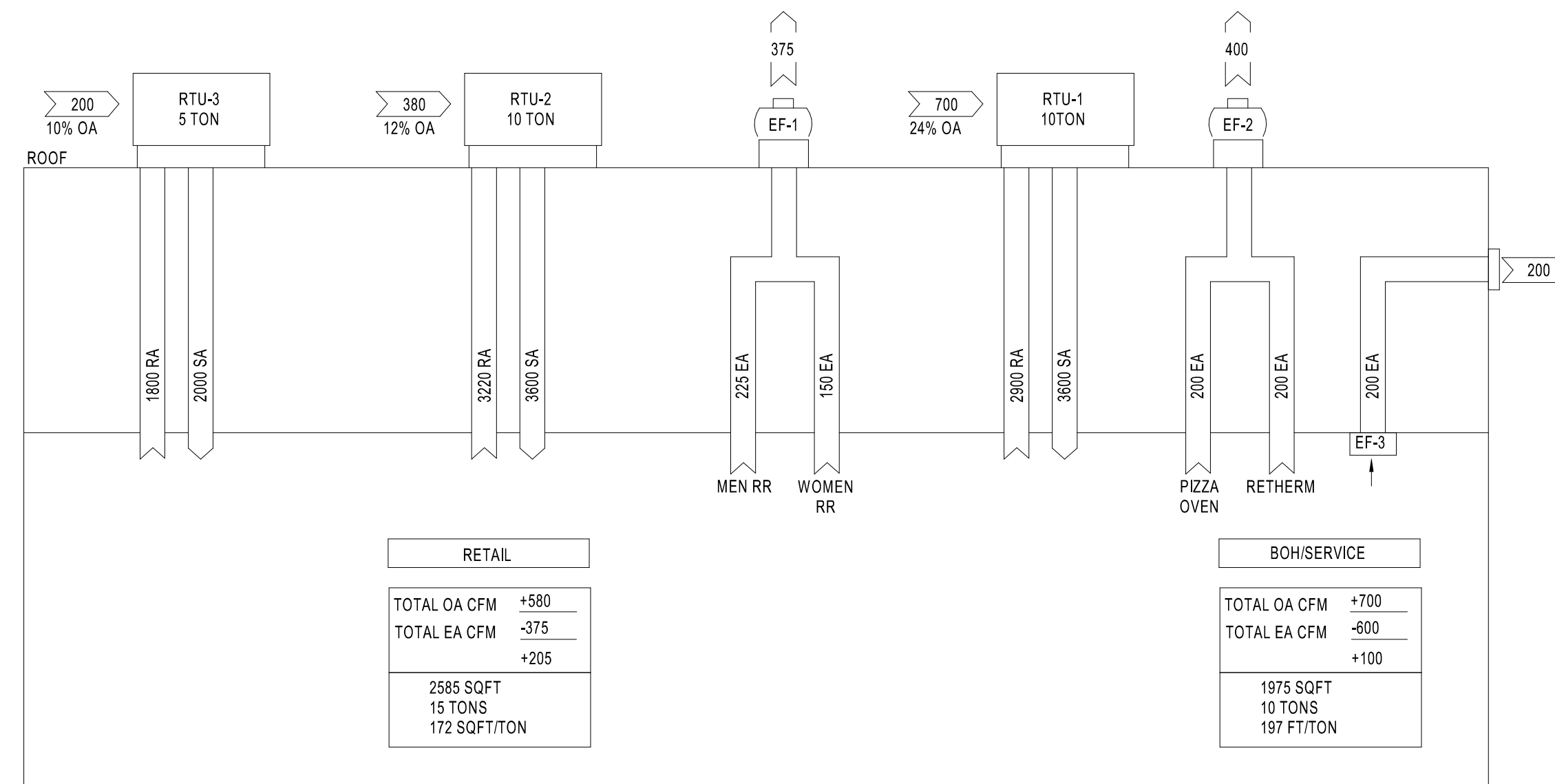
NOTES:
-NO SUBSTITUTIONS PERMITTED.
1. FOR LAY-IN CEILINGS PROVIDE WITH 18"X18" FULL FACE APPEARANCE DIFFUSER NECK. PROVIDE WITH FACTORY SQUARE TO ROUND NECK ADAPTER MODEL "SR". ROUND NECK SIZE SHALL BE EQUAL TO FLEX SIZE SERVING DIFFUSER.
2. PROVIDE WITH PLENUM INTERNALLY LINED WITH COATED FIBERBOARD. EXTERNALLY INSULATE PLENUM UPON INSTALLATION WITH DUCT WRAP INSULATION.
3. PROVIDE WITH CENTER NOTCH OPTION (CN) AS REQUIRED WHEN USED IN 24" T-BAR CEILING.
4. "O" STYLE (1/4" TURN FASTENERS ONLY), OMIT HINGE. FILTER TYPE RETURN GRILLS PROVIDED SOLELY FOR MAINTENANCE PURPOSES. OMIT FILTER UPON INSTALLATION.
5. PROVIDE WITH TYPE 6 BEVELED SURFACE FRAME AND FACTORY SQUARE TO ROUND NECK ADAPTER MODEL "SR".
6. PROVIDE WITH BACKPAN INSTALLATION.
7. PROVIDE WITH DOUBLE DEFLECTION TURNING VANES.
8. PROVIDE WITH INTEGRAL OPPOSED BLADE DAMPER.
9. COLOR: SILVER.

CONTROL SEQUENCE OF OPERATIONS: RTU (ELECTRIC/ELECTRIC)

- ELECTRIC HEATING ELECTRIC COOLING RTU SEQUENCE OF OPERATION**
- 24 HOUR CYCLE - COOLING**
1. SUPPLY AIR FAN SHALL RUN CONTINUOUSLY.
2. OUTSIDE AIR DAMPER SHALL BE IN MINIMUM POSITION.
3. RESTROOM EXHAUST FANS SHALL BE ENERGIZED (24T).
4. THERMOSTAT SHALL CYCLE COMPRESSOR(S) TO MAINTAIN ROOM SET TEMPERATURE.
- 24 HOUR CYCLE - HEATING**
1. SUPPLY AIR FAN SHALL RUN CONTINUOUSLY.
2. OUTSIDE AIR DAMPER SHALL BE IN MINIMUM POSITION.
3. RESTROOM EXHAUST FANS SHALL BE ENERGIZED (24T).
4. THERMOSTAT SHALL MODULATE ELECTRIC HEATER TO ACHIEVE ROOM SET TEMPERATURE.
- 24 HOUR CYCLE - DEHUMIDIFICATION**
1. SUPPLY AIR FANS SHALL RUN CONTINUOUSLY.
2. MECHANICAL OUTSIDE AIR DAMPERS SHALL BE IN MINIMUM POSITION.
3. RESTROOM EXHAUST FANS SHALL BE ENERGIZED (24T).
4. HUMIDISTAT SHALL CYCLE COOLING COIL STAGES TO MAINTAIN SET POINT HUMIDITY (SET AT 50%).
- SMOKE DETECTOR**
1. WHEN SMOKE DETECTOR IS ACTIVATED SUPPLY AIR FAN SHALL SHUTDOWN.
2. FIRE ALARM SHALL BE SIGNED.
3. SUPPLY AIR FAN SHALL BE MANUALLY RESET. KEYPAD SET IN MANAGER'S OFFICE.

BUILDING AIR BALANCE SCHEDULE

MARK	OUTSIDE AIR	EXHAUST
EF-1		-375
EF-2		-400
EF-3		-200
RTU-1	+700	
RTU-2	+380	
RTU-3	+200	
TOTAL:	1280	-975
BUILDING POSITIVE AIR BALANCE		305



AIR BALANCE SCHEMATIC NTS

DESTRATIFICATION FAN SCHEDULE

TAG	MODEL	LOCATION	RPM	ELECTRICAL DATA		REMARKS
				WATTS	VOLTS	
DF-1	AIRBUS A-16-SP-SH-120-X	RETAIL	860	16	120	1,2

NOTES:
1. PROVIDE ALL NECESSARY MOUNTING BRACKETS AND ACCESSORIES.
2. PROVIDE WALL MOUNTED SPEED CONTROL, 4 STEP SPEED CONTROL ON/OFF MODEL TRAC-120-1.5

AIR CURTAIN SCHEDULE

TAG	MODEL	LOCATION	CFM	HP	ELECTRICAL DATA		REMARKS
					VOLTS	PHASE	
AC-1	POWERED AIRE BCE-148	DELIVERY ROOM	2155	1/2	120	1	1,2,3,4
AC-2		TRASH STAGING					

NOTES:
1. MOUNT INSIDE BUILDING ABOVE DOOR.
2. PROVIDE ALL NECESSARY MOUNTING BRACKETS AND ACCESSORIES.
3. PROVIDE WITH MODEL S84-300 COMMERCIAL MAGNETIC REEED DOOR SWITCH. ENERGIZE EXHAUST FAN ON WHEN DOOR IS OPEN

HARRISON FRENCH & ASSOCIATES, L.L.P.
HFA
t. 479.273.7780
1705 S. Walton Blvd., Suite 3
Bentonville, Arkansas 72712
www.hfa.com

STIPULATION FOR REUSE
THE DRAWINGS ARE PREPARED FOR THE PROJECT OF AIA BAMA AT 1111 W. STATE ST. IN BENTONVILLE, ARKANSAS. ANY REUSE OF THESE DRAWINGS FOR ANY OTHER PROJECT WITHOUT THE WRITTEN PERMISSION OF HARRISON FRENCH & ASSOCIATES, L.L.P. IS STRICTLY PROHIBITED. THE USER OF THESE DRAWINGS SHALL BE RESPONSIBLE FOR OBTAINING ALL NECESSARY PERMITS AND APPROVALS FROM THE LOCAL BUILDING DEPARTMENT AND OTHER AGENCIES AND FOR THE PROTECTION OF THE PROJECT FROM THE PROJECT TO THE PROJECT.

WAWA
STORAGE NUMBER: 8005
STREET: 1111 W. STATE ST.
MOBILE: 479.273.7780
JOB NUMBER: 42-234-015

ISSUE BLOCK

NO.	REV	DATE
2	REV 2	09/15/23

CHECKED BY: BT
DRAWN BY: MJS
DOCUMENT DATE: 02/28/24
PROTO: U59FB-R
PROTO CYCLE: 2023.01.64
PLAN ISSUE: CONSTRUCTION SET

AIA BAMA LICENSED
No. 28846
PROFESSIONAL ENGINEER
TRAFFIC VALVES

HVAC NOTES AND SCHEDULES