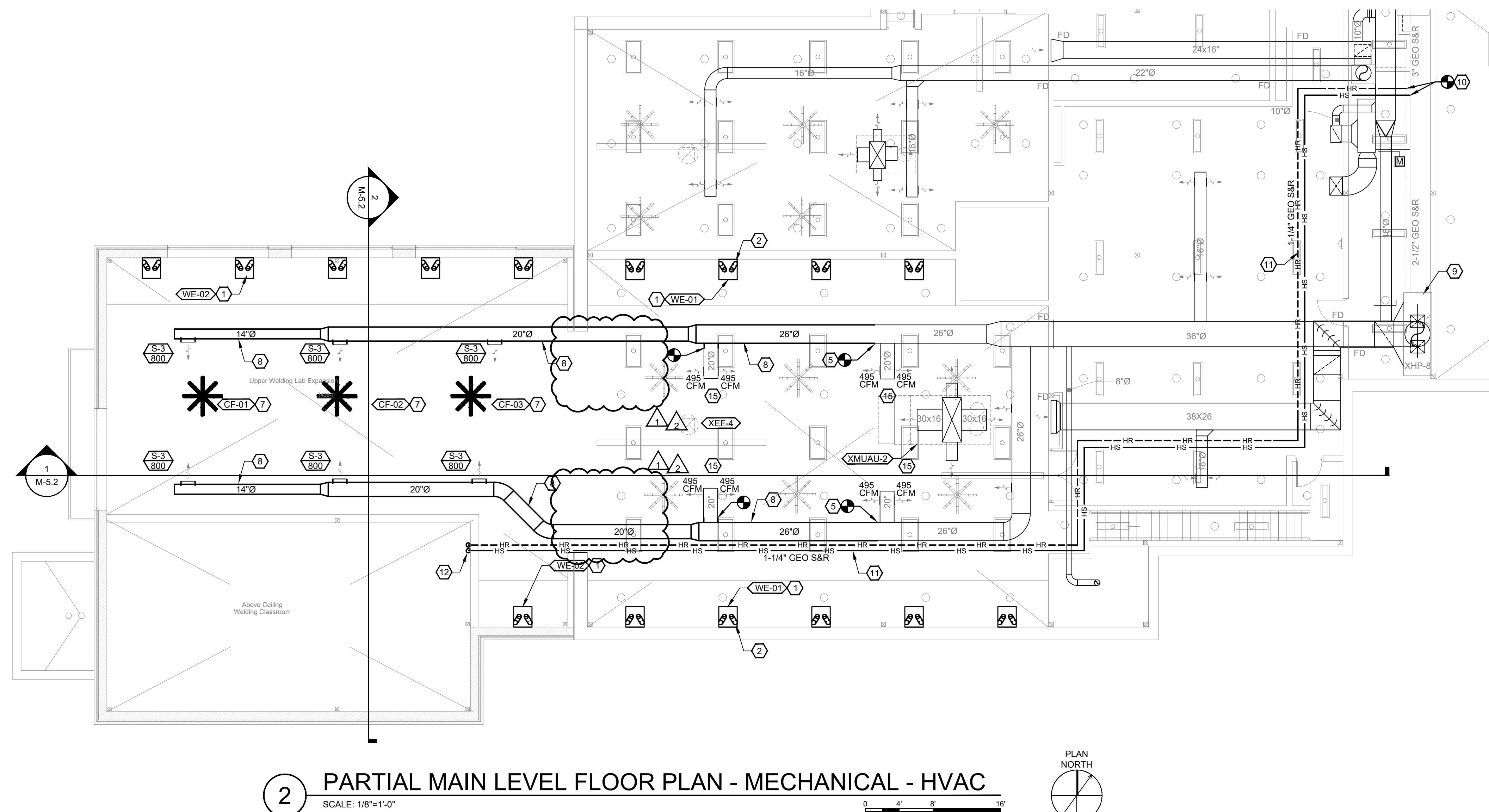


1 PARTIAL LOWER LEVEL FLOOR PLAN - MECHANICAL - HVAC  
SCALE: 1/8"=1'-0"



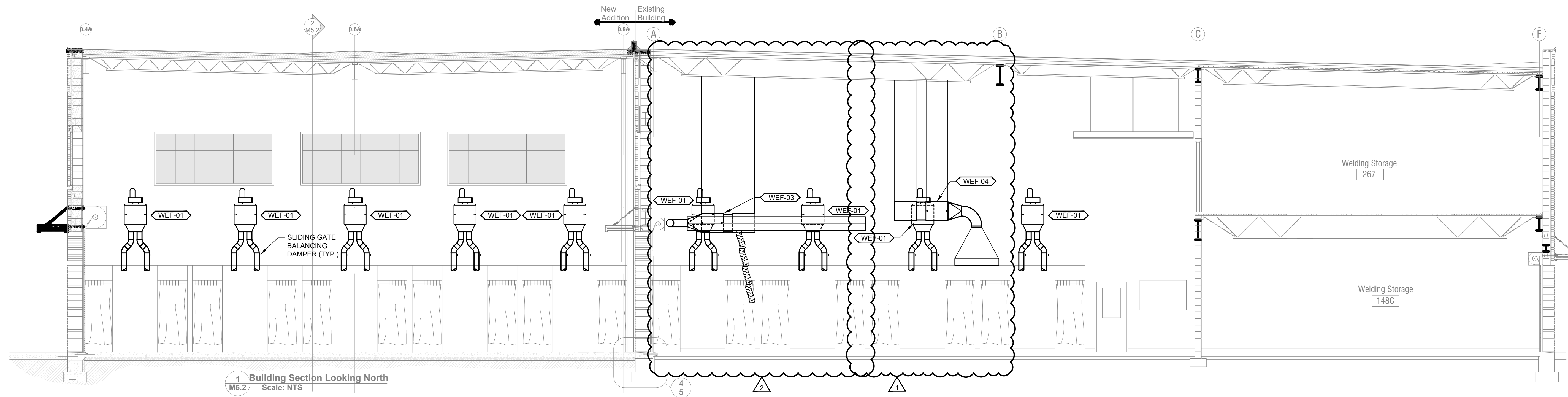
2 PARTIAL MAIN LEVEL FLOOR PLAN - MECHANICAL - HVAC  
SCALE: 1/8"=1'-0"

**GENERAL NOTES:**

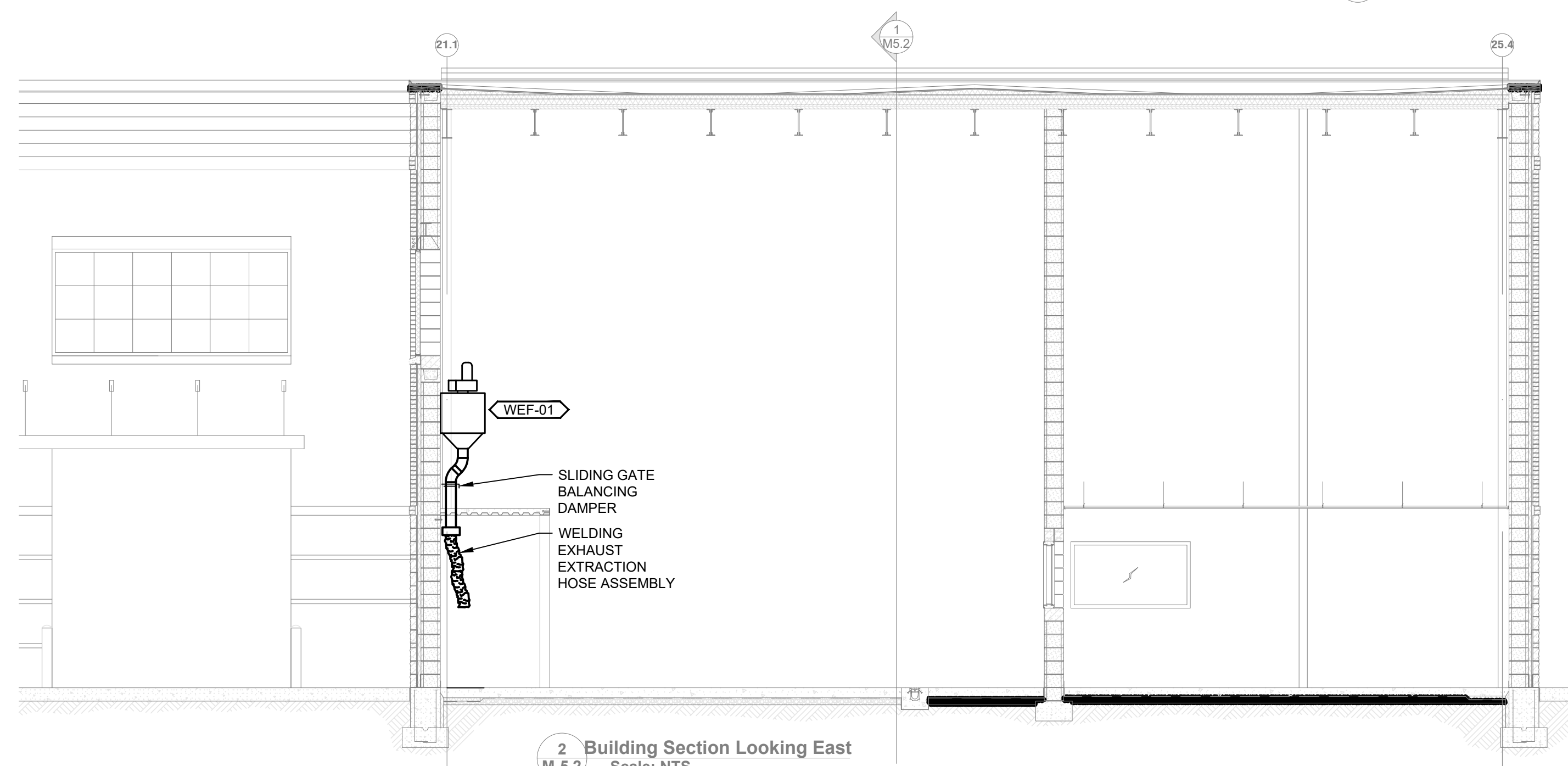
A. REFER TO SHEET M0.1 FOR GENERAL NOTES.

**SHEET KEYNOTES:**

1. WELDING EXHAUST FAN/FILTER UNIT WITH PICK-UP HOSE ASSEMBLIES INTO TWO(2) BOOTHS. MOUNT UNIT ON WALL ABOVE BOOTH (TYPICAL).
2. EXISTING PICK-UP HOSE ASSEMBLY IN EXISTING BOOTH TO BE REUSED (TYPICAL FOR EXISTING BOOTHS).
3. EXISTING BOOTH PICKUP HOSE ASSEMBLY TO BE RE-CONNECTED TO NEW EXHAUST FAN/FILTER UNIT VIA 6" ROUND EXHAUST DUCT (TYPICAL).
4. NEW PICK-UP HOSE ASSEMBLY WITHIN BOOTH CONNECTED TO NEW EXHAUST FAN/FILTER UNIT ABOVE BOOTH VIA 6" ROUND EXHAUST DUCT (TYPICAL).
5. EXTEND NEW SUPPLY AIR DUCTWORK INTO NEW WELDING LAB ADDITION.
6. NEW HVAC UNIT ABOVE CEILING TO SERVE NEW WELDING CLASSROOM. MOUNT BOTTOM OF UNIT 2'-0" ABOVE CEILING.
7. NEW CEILING VENTILATION FAN (TYPICAL). MOUNT TO SAME ELEVATION OF EXISTING FANS WITHIN EXISTING WELDING LAB AREA.
8. NEW SUPPLY AIR DUCTWORK INSTALLED BELOW ROOF STRUCTURE AT SAME ELEVATION AS EXISTING SUPPLY AIR DUCTWORK.
9. EXISTING HEAT PUMP UNIT SERVING WELDING LAB.
10. CONNECT NEW GEOTHERMAL HEAT PUMP SUPPLY AND RETURN PIPING TO EXISTING PIPING.
11. INSTALL PIPING AT BOTTOM OF ROOF STRUCTURE.
12. PIPING DOWN TO HEAT PUMP UNIT ABOVE CLASSROOM. SEE LOWER LEVEL PLAN FOR CONTINUATION. PROVIDE AIR VENT AT TURN DOWN.
13. PIPING UP. SEE MAIN LEVEL PLAN FOR CONTINUATION.
14. MOUNT TOP OF LOUVER 12'-0" AFF.
15. EXISTING DIFFUSERS TO BE RE-BALANCED TO CFM INDICATED.
16. ADJUST LOCATION OF EXISTING CARBON MONOXIDE SENSOR IF REQUIRED DUE TO EXTENTS OF EXISTING WALL DEMOLITION.
17. NEW CARBON MONOXIDE SENSOR MOUNTED 60" AFF. CONNECT SENSOR TO BUILDING AUTOMATION SYSTEM (BAS). SEE TEMPERATURE CONTROL SPECIFICATION FOR ADDITIONAL INFORMATION.
18. NOTE NOT USED.
19. EXISTING EXHAUST RAIL SYSTEM TO REMAIN. PROVIDE NEW 8" ROUND EXHAUST DUCTWORK FROM RAIL TO NEW EXHAUST FAN/FILTER UNIT.
20. EXISTING WELDING EXHAUST HOOD TO REMAIN. PROVIDE NEW 12" ROUND EXHAUST DUCTWORK FROM HOOD TO NEW EXHAUST FAN/FILTER UNIT.
21. WELDING EXHAUST FAN/FILTER UNIT MOUNTED HORIZONTALLY WITH INLINE FAN. SUPPORT UNIT FROM ROOF STRUCTURE ABOVE.



1 Building Section Looking North  
M5.2 Scale: NTS



2 Building Section Looking East  
M5.2 Scale: NTS

