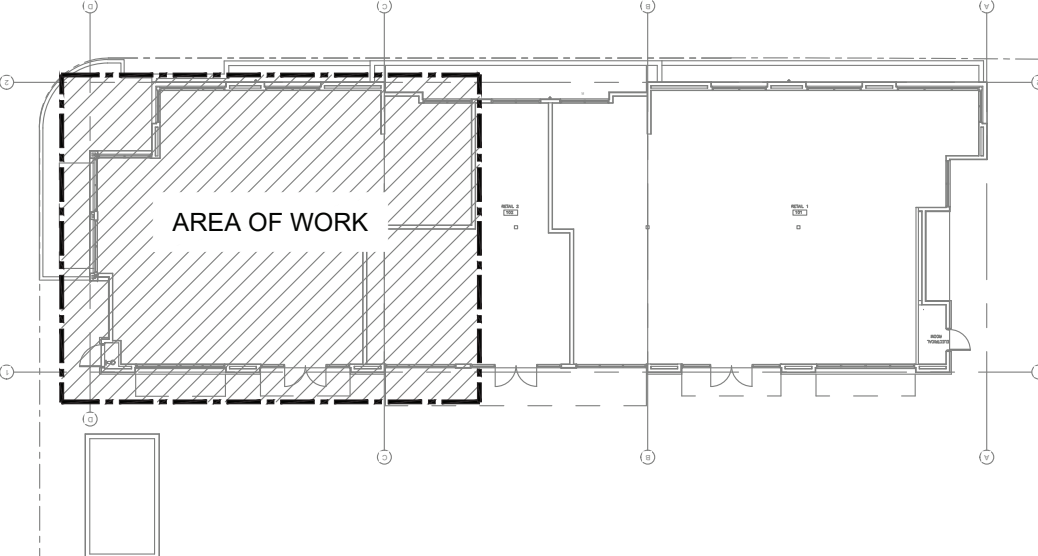
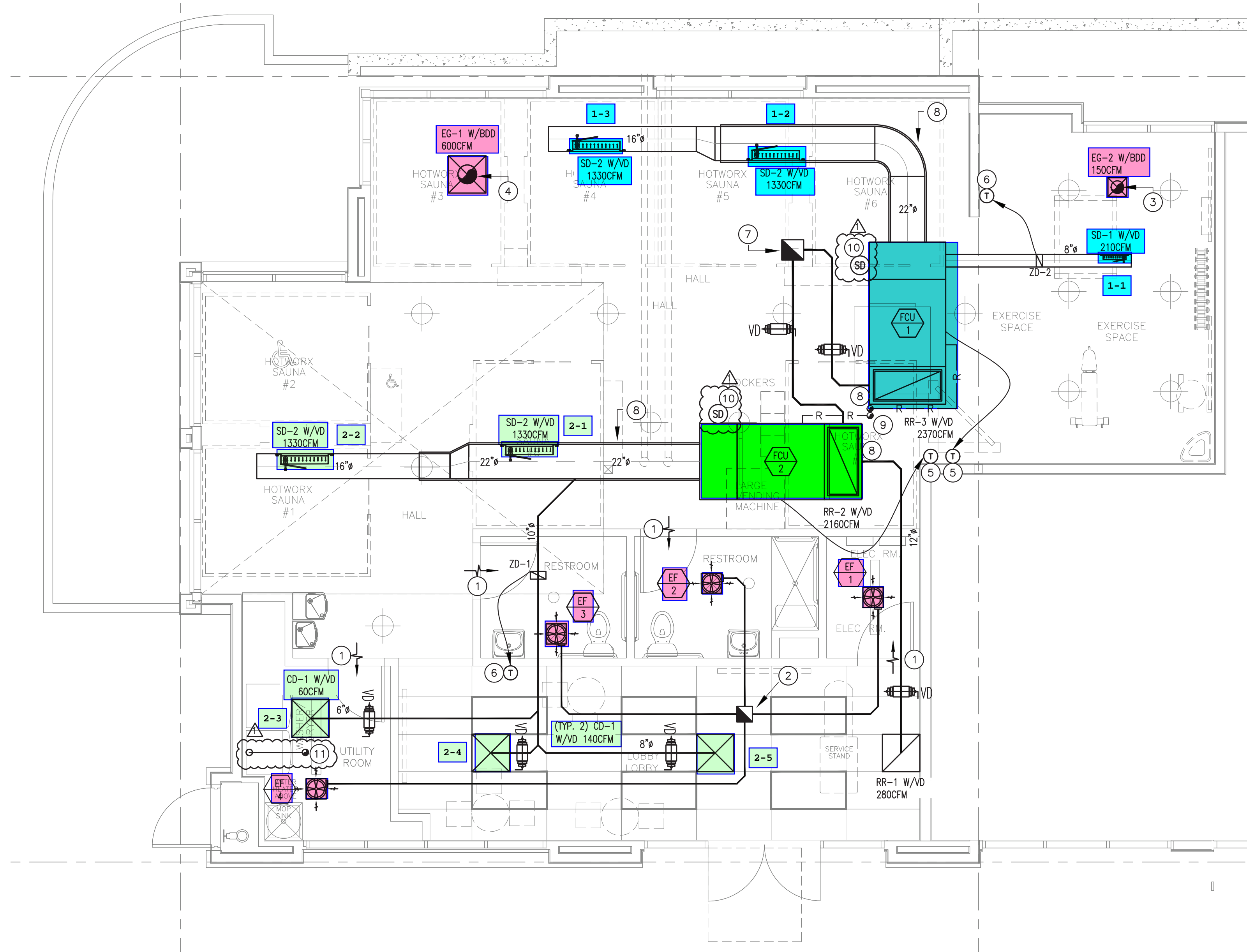


REV	DESCRIPTION	DATE
△	PC COMMENTS	08-31-23



**2 KEY PLAN**  
M2.1 SCALE: NTS

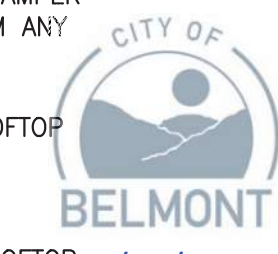
**1 MECHANICAL FLOOR PLAN**  
M2.1 SCALE: 1/4"=1'-0"

**GENERAL NOTES**

- A. CONTRACTOR SHALL VERIFY IN THE FIELD FOR EXACT LOCATION OF ALL DUCTING/PIPING AND UTILITIES PRIOR TO START OF WORK. IN THE EVENT OF ANY DISCREPANCIES OR POTENTIAL CONFLICTS, NOTIFY THE ARCHITECT AND ENGINEER IN WRITING PRIOR TO START OF WORK.
- B. ALL DUCTING/PIPING LOCATIONS ARE DIAGRAMMATIC. CONTRACTOR SHALL COORDINATE WITH ALL TRADES AND OWNER'S REPRESENTATIVE AND VERIFY EXACT ROUTING PRIOR TO START OF WORK.
- C. FINAL THERMOSTAT/REMOTE SENSOR SHALL BE COORDINATED WITH THE ARCHITECT AND GENERAL CONTRACTOR FOR APPROVAL PRIOR TO INSTALLATION.
- D. CONTRACTOR SHALL PERFORM AIR BALANCING AS PART OF TESTING AND COMMISSIONING ACTIVITIES OF ALL HVAC SYSTEM AND EQUIPMENT.
- E. PROVIDE YOUNG REGULATOR BALANCING DAMPER AS NEEDED FOR THE DIFFUSER THAT IS NOT ACCESSIBLE FOR BALANCING.
- F. CONTRACTOR TO PROVIDE ACCESS PANEL TO ALL MECHANICAL EQUIPMENTS FOR MAINTENANCE IF NOT READILY ACCESSIBLE. COORDINATE WITH ARCHITECT.

**KEY NOTES**

- ① 1/2" DOOR UNDERCUT. COORDINATE WITH ARCHITECT.
- ② 10"x10" EXHAUST AIR RISER THRU ROOF. PROVIDE WITH ROOF CAP, BACK DRAFT DAMPER AND INSECT SCREEN. MAINTAIN A MINIMUM DISTANCE OF 10 FEET CLEARANCE FROM ANY MECHANICAL INTAKE.
- ③ 8" EXHAUST AIR DUCT RISER. PROVIDE WITH BACK DRAFT DAMPER, GOING TO ROOFTOP EXHAUST FAN. MAINTAIN A MINIMUM DISTANCE OF 10 FEET CLEARANCE FROM ANY MECHANICAL INTAKE.
- ④ 12" EXHAUST AIR DUCT RISER. PROVIDE WITH BACK DRAFT DAMPER, GOING TO ROOFTOP EXHAUST FAN. MAINTAIN A MINIMUM DISTANCE OF 10 FEET CLEARANCE FROM ANY MECHANICAL INTAKE.
- ⑤ FCU THERMOSTAT. COORDINATE WITH ARCHITECT.
- ⑥ ZONE DAMPER THERMOSTAT. COORDINATE WITH ARCHITECT.
- ⑦ 14"x13" FRESH AIR RISER, 1060CFM. PROVIDE A MINIMUM OF 10 FEET CLEARANCE FROM ANY EXHAUST TERMINATION.
- ⑧ 1" ACOUSTIC LINING WITH MINIMUM 15 FT. LENGTH.
- ⑨ REFRIGERANT PIPING. CONTRACTOR TO DETERMINE BEST POSSIBLE ROUTE IN FIELD. PROVIDE WATERPROOFING AND FINISH AT THE PENETRATION. COORDINATE FINISH WITH ARCHITECT.
- ⑩ DUCT MOUNTED SMOKE DETECTOR.
- ⑪ 4 #8 GAUGE 24 RIGID METAL DRYER VENT WITH SMOOTH INTERIOR SURFACE THRU ROOF. INSTALL PER MANUFACTURER'S INSTRUCTIONS. PROVIDE WITH ROOF CAP AND BACK DRAFT DAMPER, NO SCREEN. MAINTAIN A MINIMUM DISTANCE OF 36 INCHES FROM OPENING INTO THE BUILDING (2022 CMC 502.2.1).



**HOTWORX STUDIO  
INTERIOR TENANT  
IMPROVEMENT**  
410 EL CAMINO REAL, SUITE A,  
BELMONT, CA 94002



TITLE:  
  
MECHANICAL  
FLOOR PLAN

JOB NO: A2306-AD434  
DRAWN: --  
CHECKED: --  
SCALE: AS SHOWN  
DATE: 09.14.2023

**M2.1**

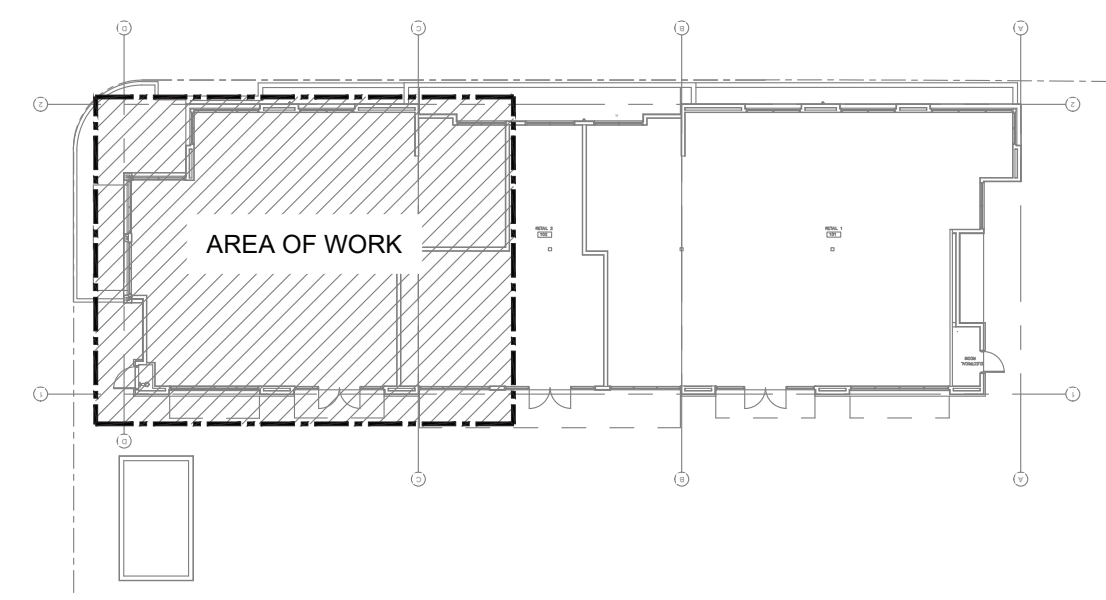
REV	DESCRIPTION	DATE
△	PC COMMENTS	08-31-23

### GENERAL NOTES

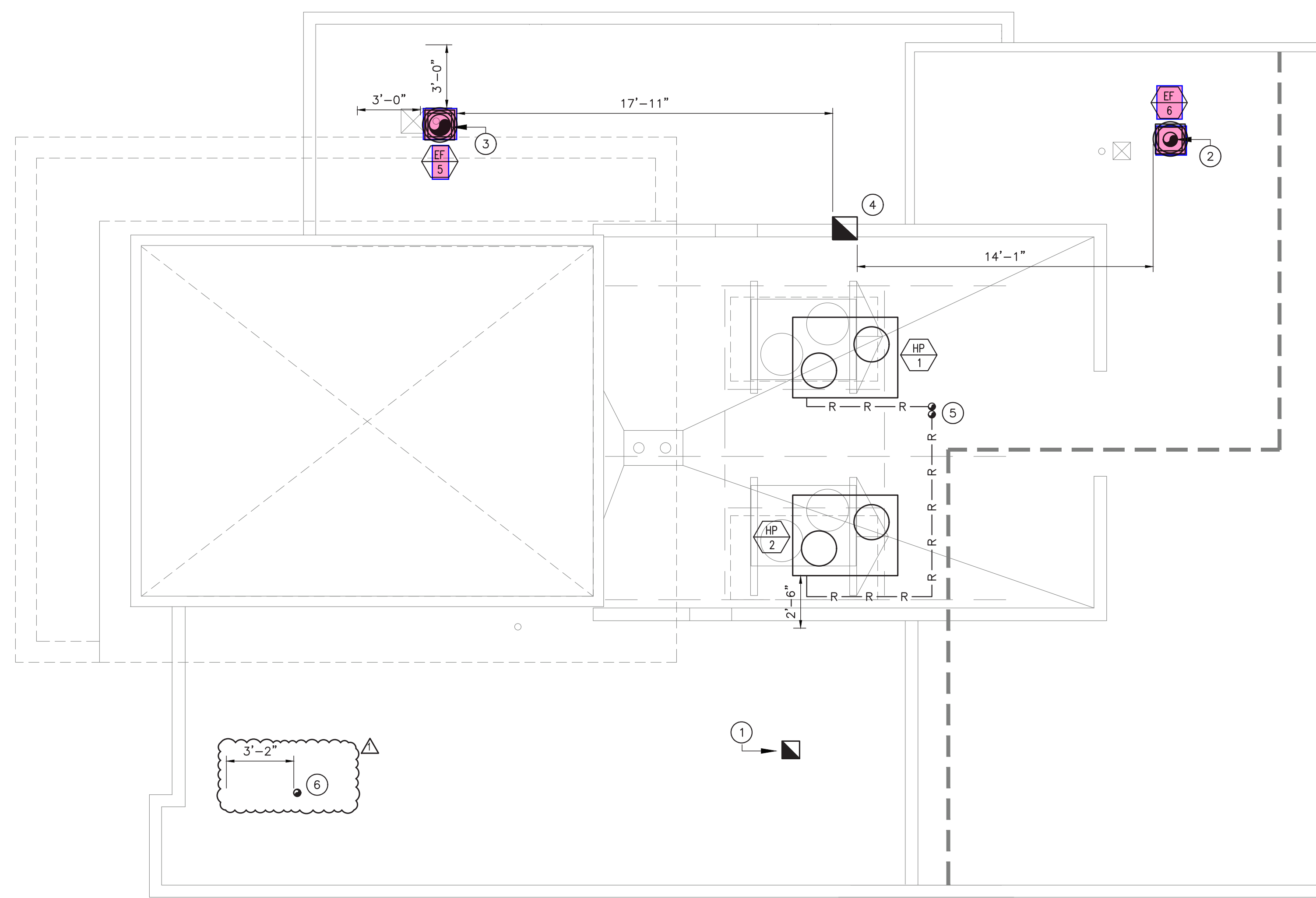
- A. CONTRACTOR SHALL VERIFY IN THE FIELD FOR EXACT LOCATION OF ALL DUCTING/PIPING AND UTILITIES PRIOR TO START OF WORK. IN THE EVENT OF ANY DISCREPANCIES OR POTENTIAL CONFLICTS, NOTIFY THE ARCHITECT AND ENGINEER IN WRITING PRIOR TO START OF WORK.
- B. ALL DUCTING/PIPING LOCATIONS ARE DIAGRAMMATIC. CONTRACTOR SHALL COORDINATE WITH ALL TRADES AND OWNER'S REPRESENTATIVE AND VERIFY EXACT ROUTING PRIOR TO START OF WORK.
- C. CONTRACTOR TO PROVIDE ACCESS PANEL TO ALL MECHANICAL EQUIPMENTS FOR MAINTENANCE IF NOT READILY ACCESSIBLE. COORDINATE WITH ARCHITECT.

### KEY NOTES

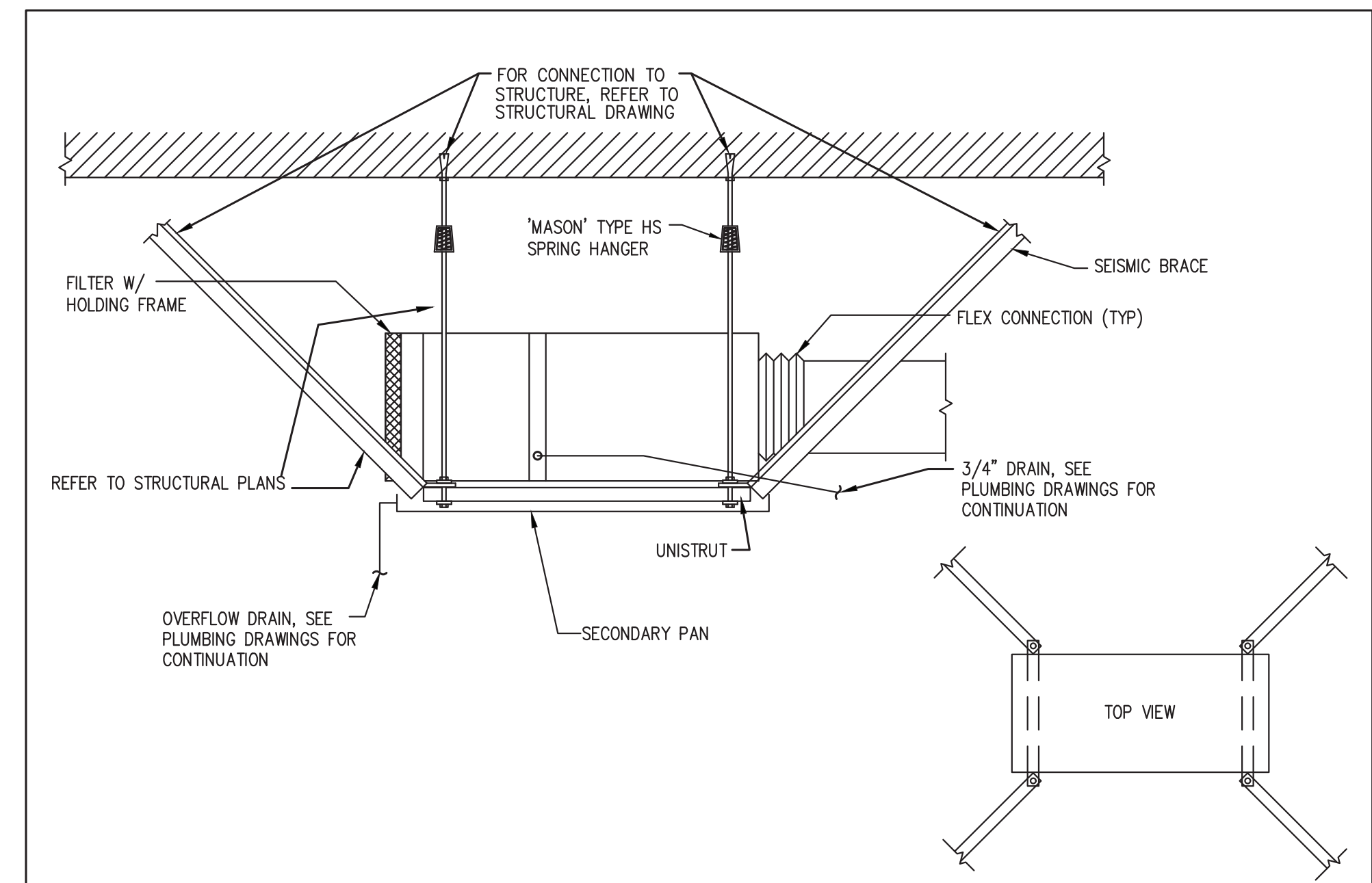
- ① 10"x10" EXHAUST AIR DUCT RISER. PROVIDE WITH ROOF CAP, BACK DRAFT DAMPER AND INSECT SCREEN. MAINTAIN A MINIMUM DISTANCE OF 10 FEET CLEARANCE FROM ANY MECHANICAL INTAKE.
- ② 8" EXHAUST AIR DUCT RISER. PROVIDE WITH BACK DRAFT DAMPER, GOING TO ROOFTOP EXHAUST FAN. MAINTAIN A MINIMUM DISTANCE OF 10 FEET CLEARANCE FROM ANY MECHANICAL INTAKE.
- ③ 12" EXHAUST AIR DUCT RISER. PROVIDE WITH BACK DRAFT DAMPER, GOING TO ROOFTOP EXHAUST FAN. MAINTAIN A MINIMUM DISTANCE OF 10 FEET CLEARANCE FROM ANY MECHANICAL INTAKE.
- ④ 14"x13" FRESH AIR RISER, 1060CFM. PROVIDE A MINIMUM OF 10 FEET CLEARANCE FROM ANY EXHAUST TERMINATION.
- ⑤ REFRIGERANT PIPING. CONTRACTOR TO DETERMINE BEST POSSIBLE ROUTE IN FIELD. PROVIDE WATERPROOFING AND FINISH AT THE PENETRATION. COORDINATE FINISH WITH ARCHITECT.
- ⑥ 4" GAUGE 24 RIGID METAL DRYER VENT WITH SMOOTH INTERIOR SURFACE THRU ROOF. INSTALL PER MANUFACTURER'S INSTRUCTIONS. PROVIDE WITH ROOF CAP AND BACK DRAFT DAMPER, NO SCREEN.



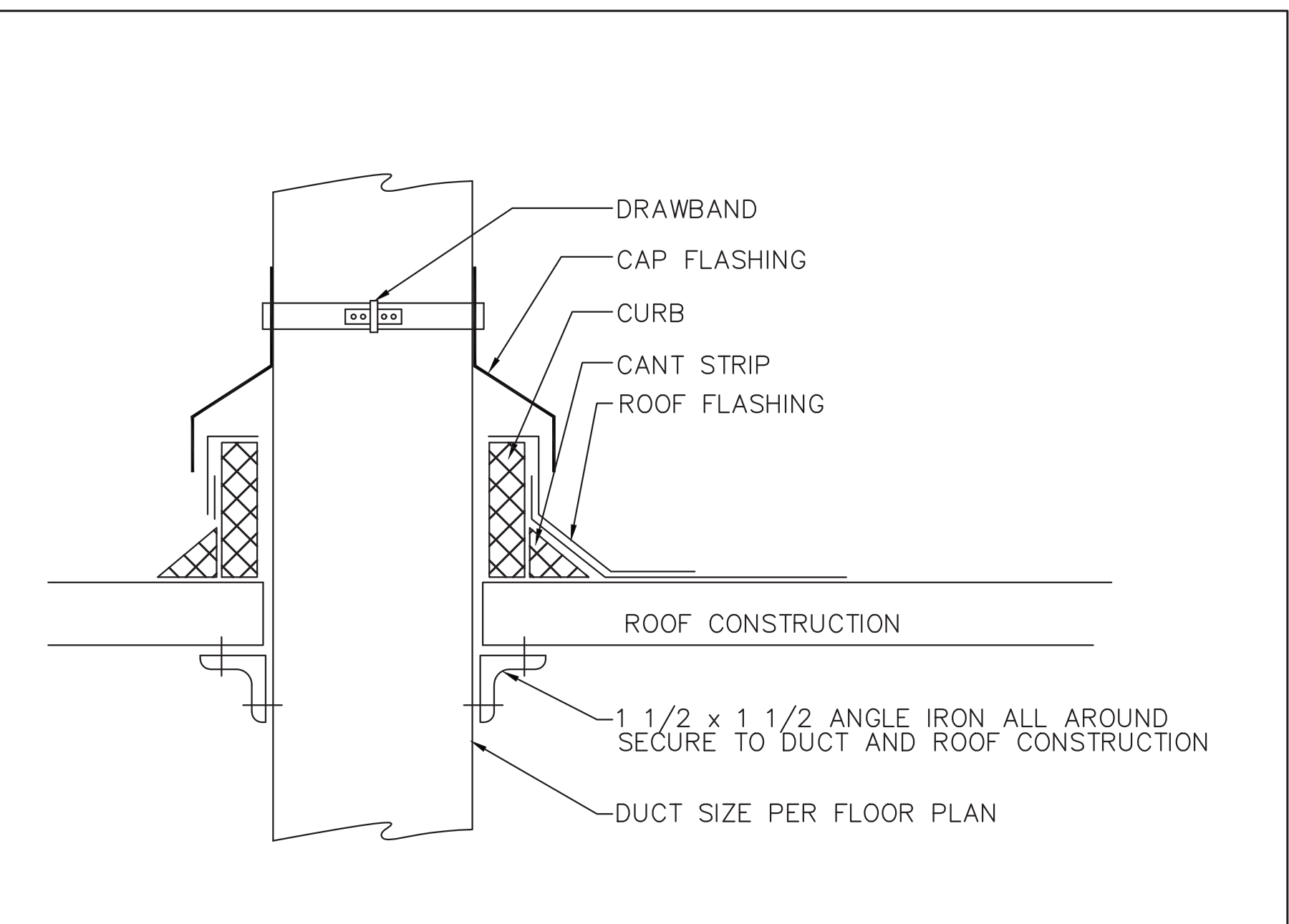
**2 KEY PLAN**  
SCALE: NTS



**1 MECHANICAL ROOF PLAN**  
SCALE: 1/4"=1'-0"



**10 FAN COIL UNIT INSTALLATION DETAIL**  
SCALE: NONE



**11 DUCT THROUGH ROOF DETAIL**  
SCALE: NONE



**HOTWORX STUDIO  
INTERIOR TENANT  
IMPROVEMENT**  
410 EL CAMINO REAL, SUITE A,  
BELMONT, CA 94002



TITLE:  
**MECHANICAL  
ROOF PLAN**

JOB NO: A2306-AD434  
DRAWN: --  
CHECKED: --  
SCALE: AS SHOWN  
DATE: 09.14.2023

**M2.2**