

Issue List

- EF-1 ECM WIRE
- Kitchen temperature.
- RTU-2 temp sensor location



Toppers Pizza (Manhattan, KS)

Project Issue Information

Issue Name : EF-1 ECM WIRE
Description : ECM wire is recommended to be in a flex conduit to prevent damage for time from the sun. ECM wire is held in place by electrical tape, recommend to at least fasten using zip ties if a dedicated conduit is not used.

Created By : National TAB **Assigned To :** National TAB - Will Turnbough

Status : Open

Priority : Low **Asset Tag :** EF-1

Originated Date : 06/30/2025 - Cody Collett - National TAB

Project Issue File Details



06/30/2025



Toppers Pizza (Manhattan, KS)

Project Issue Information

Issue Name : Kitchen temperature.
Description : The kitchen is comfortable in all areas during testing with exception of in front of the hood under the MUA-PSP due to the mua not being installed with a cooling.
Created By : National TAB **Assigned To :** National TAB - Will Turnbough
Status : Open
Priority : InfoOnly **Asset Tag :**
Originated Date : 06/30/2025 - Cody Collett - National TAB



Toppers Pizza (Manhattan, KS)

Project Issue Information

Issue Name : RTU-2 temp sensor location
Description : RTU-2 temp sensor is not at design location. sensor is located next to a refrigerator which may affect the accuracy of sensed temperature. Design location is not recommended either due to proximity to the front window and may be affected by sunlight and cold temperatures near the glass. Recommend relocating sensor to the location circled in green.

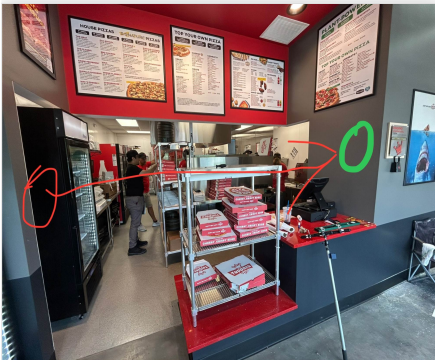
Created By : National TAB **Assigned To :** National TAB - Will Turnbough

Status : Open

Priority : Medium **Asset Tag :** RTU-2

Originated Date : 06/25/2025 - Cody Collett - National TAB

Project Issue File Details



06/25/2025



06/25/2025