

Report By:

National TAB  
1329 E. KEMPER ROAD  
SUITE 4210  
CINCINNATI, OH 45246



**Report: TAB REPORT**  
**Function: Test, Adjust, & Balance**  
**Date: 07/31/2024**

# PROJECT

**07-08-24 WAWA #05803 ROBERTSDALE, AL**

21022 HWY 59 BALDWIN

ROBERTSDALE, AL 36567

Client

Wawa  
260 West Baltimore Pike  
Wawa, PA 19063

# National TAB

Project: 07-08-24 WAWA #05803 ROBERTSDALE, AL

## Table Of Contents

| <b>Section</b>   | <b>Page #</b> |
|------------------|---------------|
| Summary          | 3             |
| Issue Data       | 4             |
| Balance Schedule | 7             |
| AHU/RTU          | 8             |
| FAN - Exhaust    | 14            |
| GRD Layout       | 17            |

## Project Summary

The summary below provides a quick understanding of our scope of work and general testing procedures. Enclosed in the report is further detail about your building performance including recommendations, asset data, and pictures. Our focus is to work with the trades to remedy any issues or deficiencies during the actual field balancing and not after the balancing has occurred to achieve a positive environment and outcome. The level of success is determined by the availability of the trades, possible parts needed, or time constraints.

### RTU's (Roof Top Units) w/ Diffusers

Each of the RTU's were measured at their terminal devices or via traverse to establish a total flow for that unit. Each RTU was adjusted to within tolerance of the engineer's design flow. Each outlet was then adjusted to within tolerance of the design flow. Outside air was measured by reading the intake air opening with a velocity grid and multiplying by the free area. The outside air damper was adjusted until the airflow was within the design requirements. Any equipment that fell outside of that tolerance is noted throughout the report.

### General Exhaust Fans w/ Grilles

The general exhaust fans were measured by reading each air device with a flow hood. The total airflow for each fan is equivalent to the sum of these readings. Fan speed was then adjusted so that the airflow was within tolerance of design. Each terminal device was balanced to within tolerance of the design volume using the installed volume dampers. Any equipment that fell outside of this tolerance is noted throughout the report.

### Ceiling Exhaust Fans

The ceiling exhaust fans were measured using a flow hood. If speed adjustment was provided, the fan speed was adjusted to within design tolerance. Any equipment that fell outside of this tolerance is noted throughout the report.

### Final Building Tests

After completing the test and balance the final building pressure was measured. It was confirmed that the building pressure fell within acceptable tolerances and that the pressure measurement coincides with the actual and design net airflow. Any deviations from these standards are noted throughout the report.

## Issue List

- Diffuser 1-3 Low Flow
- EF-1 Over Amps



**07-08-24 WAWA #05803 ROBERTSDALE, AL**

**Project Issue Information**

**Issue Name :** Diffuser 1-3 Low Flow  
**Description :** Diffuser 1-3 has a current airflow of 211 CFM (70% of design). Damper appears to be fully opened. Recommend inspecting damper and duct for possible pinching or obstruction.  
**Created By :** National TAB                      **Assigned To :** National TAB - Brianna Biggs  
**Status :** Open  
**Priority :** Medium                                      **Asset Tag :**  
**Originated Date :** 07/10/2024 - Mark Johnson - National TAB

Project Issue Response Details

- **07/11/2024 National TAB - Mark Johnson**
  - Airflow was increased to 77% of design, but could not be increased further via damper or duct adjustment. The remaining diffusers are within design.



**07-08-24 WAWA #05803 ROBERTSDALE, AL**

**Project Issue Information**

**Issue Name :** EF-1 Over Amps  
**Description :** The motor for EF-1 is overramping at all speeds. At design flow, motor is at 4.3 amps. Recommend inspecting motor for coil damage or other issues. Fan was switched off after balancing and the required speed was marked on the speed controller.  
**Created By :** National TAB                      **Assigned To :** National TAB - Brianna Biggs  
**Status :** Open  
**Priority :** Urgent                                      **Asset Tag :**  
**Originated Date :** 07/11/2024 - Mark Johnson - National TAB

### AIR BALANCE SCHEDULE

| UNIT          | AREA SERVED  | HVAC SUPPLY |        | HVAC RETURN |        | HVAC OUTDOOR |        | OA %   |        | HOOD MAKE-UP |        | HOOD EXHAUST |        | GENERAL EXH. |        |
|---------------|--------------|-------------|--------|-------------|--------|--------------|--------|--------|--------|--------------|--------|--------------|--------|--------------|--------|
|               |              | DESIGN      | ACTUAL | DESIGN      | ACTUAL | DESIGN       | ACTUAL | DESIGN | ACTUAL | DESIGN       | ACTUAL | DESIGN       | ACTUAL | DESIGN       | ACTUAL |
| RTU-1         | RETAIL       | 3400        | 3338   | 2790        | 2710   | 610          | 628    | 17.9%  | 18.8%  |              |        |              |        |              |        |
| RTU-2         | FOOD SERVICE | 4000        | 4147   | 3350        | 3478   | 650          | 669    | 16.3%  | 16.1%  |              |        |              |        |              |        |
| RTU-3         | RETAIL       | 3000        | 3131   | 2610        | 2730   | 390          | 401    | 13.0%  | 12.8%  |              |        |              |        |              |        |
| EF-1          | FOOD SERVICE |             |        |             |        |              |        |        |        |              |        |              |        | 1150         | 1089   |
| EF-2          | WATER ROOM   |             |        |             |        |              |        |        |        |              |        |              |        | 60           | 102    |
| <b>TOTALS</b> |              | 10400       | 10616  | 8750        | 8918   | 1650         | 1698   |        |        | 0            | 0      | 0            | 0      | 1210         | 1191   |

#### NET BUILDING AIRFLOW CALCULATION

| TOTALS             | DESIGN     | ACTUAL     |
|--------------------|------------|------------|
| TOTAL OA           | 1650       | 1698       |
| TOTAL EXHAUST      | 1210       | 1191       |
| <b>NET AIRFLOW</b> | <b>440</b> | <b>507</b> |

| DOOR TESTED    | BUILDING PRESSURE MEASUREMENTS (IN. H2O) |
|----------------|--|
| FRONT          | 0.008                                    |
| SIDE           | 0.009                                    |
| REAR           | 0.007                                    |
| <b>AVERAGE</b> | <b>0.008</b>                             |

#### FINAL CHECKS

- ACTUAL NET AIRFLOW COINCIDES WITH DESIGN: ✓

---

- MEASURED PRESSURES COINCIDES WITH ACTUAL NET AIRFLOW: ✓

---

- PRESSURE FALLS WITHIN IMC TOLERANCE OF +/-0.02" W.C. ✓

NOTES:

# National TAB

Project: 07-08-24 WAWA #05803 ROBERTSDALE, AL

System/Unit: AHU/RTU



Asset: RTU1

AREA:RETAIL

| Unit Data           |                   |              |
|---------------------|-------------------|--------------|
|                     | Design            | Actual       |
| MFG                 | LENNOX<br>ENLIGHT | LENNOX       |
| Serial Num          | -                 | 5623L01920   |
| Model Num           | LCT102H4E         | LCT102H4EG1Y |
| Type                | RTU               | RTU          |
| Configuration       | VERTICAL          | VERTICAL     |
| Num OA Filters 1    | -                 | 2            |
| OA Filter Size 1    | -                 | 23x14.25     |
| Num Final Filter 1  | -                 | 4            |
| Final Filter Size 1 | -                 | 20x25x2      |

| Test Data          |        |             |
|--------------------|--------|-------------|
|                    | Design | Actual      |
| SF CFM             | 3400   | 3338        |
| RA CFM             | 2790   | 2710        |
| OA CFM             | 610    | 628         |
| RL Voltage         | -      | 212/213/213 |
| RL Amperage        | -      | 3.0/2.4/2.5 |
| SF System SetPt    | -      | 62%         |
| RA Damper Position | -      | 69%         |
| RA Damper Type     | -      | ECONOMIZER  |
| OA Damper Position | -      | 31%         |
| OA Damper Type     | -      | ECONOMIZER  |

| Motor Data     |        |          |
|----------------|--------|----------|
|                | Design | Actual   |
| Motor MFG      | -      | EBMPAPST |
| Frame          | -      | N/A      |
| Horsepower     | 3.75   | 3.8      |
| Motor Rpm      | -      | 2200     |
| Phase          | 3      | 3        |
| Rated Voltage  | 208    | 200-240  |
| Rated Amperage | -      | 8.7      |
| Service Factor | -      | N/A      |

| Performance Data |        |        |
|------------------|--------|--------|
|                  | Design | Actual |
| MA Plenum SP     | -      | -0.36" |
| Fan Suction SP   | -      | -0.69" |
| Fan Discharge SP | -      | 0.45"  |
| Total ESP        | 0.5"   | 0.81"  |
| Fan Total SP     | -      | 1.14"  |

| Drive Data         |        |
|--------------------|--------|
|                    | Actual |
| Motor Sheave Size  | DD     |
| Motor Bore Size    | DD     |
| Motor Sheave SetPt | DD     |
| Fan Sheave Size    | DD     |
| Fan Sheave Bore    | DD     |
| Belt CL Distance   | DD     |
| Num of Belts       | DD     |
| Belt Size          | DD     |

Completed By: Mark Johnson on 07/11/2024

# National TAB

Project:07-08-24 WAWA #05803 ROBERTSDALE, AL

## AHU/RTU



### Diffuser Supply (GRD)

#### RTU1/RETAIL

| Asset      |                    |      |      |            |    |        |        |           |             |
|------------|--------------------|------|------|------------|----|--------|--------|-----------|-------------|
| Asset Name | Location           | Type | Size | DESIGN CFM | AK | CFM(1) | CFM(2) | FINAL CFM | % to design |
| SGRD1      | RETAIL             | LD1  | 10"  | 300        | 1  | 429    | 345    | 281       | 93.7        |
| SGRD2      | RETAIL             | LD1  | 10"  | 300        | 1  | 428    | 329    | 300       | 100.0       |
| SGRD3      | RETAIL             | LD1  | 10"  | 300        | 1  | 267    | 227    | 232       | 77.3        |
| SGRD4      | ASSOCIATES         | CD1  | 8"   | 150        | 1  | 178    | 153    | 147       | 98.0        |
| SGRD5      | OFFICE             | CD1  | 8"   | 150        | 1  | 201    | 174    | 156       | 104.0       |
| SGRD6      | RETAIL             | LD1  | 10"  | 325        | 1  | 512    | 421    | 350       | 107.7       |
| SGRD7      | RETAIL             | LD1  | 10"  | 325        | 1  | 463    | 399    | 323       | 99.4        |
| SGRD8      | RETAIL             | LD1  | 10"  | 300        | 1  | 289    | 260    | 271       | 90.3        |
| SGRD9      | RETAIL             | LD1  | 10"  | 290        | 1  | 344    | 278    | 313       | 107.9       |
| SGRD10     | DELIVERY VESTIBULE | CD1  | 8"   | 200        | 1  | 261    | 219    | 192       | 96.0        |
| SGRD11     | RETAIL             | LD1  | 10"  | 280        | 1  | 430    | 343    | 295       | 105.4       |
| SGRD12     | RETAIL             | LD1  | 10"  | 280        | 1  | 122    | 108    | 285       | 101.8       |
| SGRD13     | REAR VESTIBULE     | CD3  | 6"   | 100        | 1  | 94     | 87     | 93        | 93.0        |
| SGRD14     | MENS RR            | CD3  | 6"   | 50         | 1  | 109    | 99     | 54        | 108.0       |
| SGRD15     | WOMENS RR          | CD3  | 6"   | 50         | 1  | 120    | 92     | 46        | 92.0        |
| Total      |                    |      |      | 3400       |    | 4247   | 3534   | 3338      | 98.18%      |

# National TAB

Project: 07-08-24 WAWA #05803 ROBERTSDALE, AL

## System/Unit: AHU/RTU



Asset: RTU2

AREA:FOOD SERVICE

| Unit Data           |                |              |
|---------------------|----------------|--------------|
|                     | Design         | Actual       |
| MFG                 | LENNOX ENLIGHT | LENNOX       |
| Serial Num          | -              | 5624B06330   |
| Model Num           | LCT120H4E      | LCT120H4EN1Y |
| Type                | RTU            | RTU          |
| Configuration       | VERTICAL       | VERTICAL     |
| Num OA Filters 1    | -              | 2            |
| OA Filter Size 1    | -              | 23x14.25     |
| Num Final Filter 1  | -              | 4            |
| Final Filter Size 1 | -              | 20x25x2      |

| Test Data          |        |             |
|--------------------|--------|-------------|
|                    | Design | Actual      |
| SF CFM             | 4000   | 4147        |
| RA CFM             | 3350   | 3478        |
| OA CFM             | 650    | 669         |
| RL Voltage         | -      | 211/212/212 |
| RL Amperage        | -      | 5.5/5.5/5.6 |
| SF System SetPt    | -      | 82%         |
| RA Damper Position | -      | 75%         |
| RA Damper Type     | -      | ECONOMIZER  |
| OA Damper Position | -      | 25%         |
| OA Damper Type     | -      | ECONOMIZER  |

| Motor Data     |        |          |
|----------------|--------|----------|
|                | Design | Actual   |
| Motor MFG      | -      | EBMPAPST |
| Frame          | -      | N/A      |
| Horsepower     | 3.75   | 3.8      |
| Motor Rpm      | -      | 2200     |
| Phase          | 3      | 3        |
| Rated Voltage  | 208    | 200-240  |
| Rated Amperage | -      | 8.7      |
| Service Factor | -      | N/A      |

| Performance Data |        |        |
|------------------|--------|--------|
|                  | Design | Actual |
| MA Plenum SP     | -      | -1.27" |
| Fan Suction SP   | -      | -1.66" |
| Fan Discharge SP | -      | 0.55"  |
| Total ESP        | 0.5"   | 1.82"  |
| Fan Total SP     | -      | 2.21"  |

| Drive Data         |        |
|--------------------|--------|
|                    | Actual |
| Motor Sheave Size  | DD     |
| Motor Bore Size    | DD     |
| Motor Sheave SetPt | DD     |
| Fan Sheave Size    | DD     |
| Fan Sheave Bore    | DD     |
| Belt CL Distance   | DD     |
| Num of Belts       | DD     |
| Belt Size          | DD     |

Completed By: Mark Johnson on 07/11/2024

# National TAB

Project:07-08-24 WAWA #05803 ROBERTSDALE, AL

## AHU/RTU



### Diffuser Supply (GRD)

#### RTU2/FOOD SERVICE

| Asset      |                 |      |      |            |    |        |        |           |             |
|------------|-----------------|------|------|------------|----|--------|--------|-----------|-------------|
| Asset Name | Location        | Type | Size | DESIGN CFM | AK | CFM(1) | CFM(2) | FINAL CFM | % to design |
| SGRD1      | FOOD SERVICE    | LD1  | 10"  | 400        | 1  | 319    | 389    | 418       | 104.5       |
| SGRD2      | FOOD SERVICE    | LD1  | 10"  | 400        | 1  | 335    | 364    | 389       | 97.3        |
| SGRD3      | FOOD SERVICE    | LD1  | 10"  | 400        | 1  | 405    | 391    | 408       | 102.0       |
| SGRD4      | FOOD SERVICE    | LD1  | 12"  | 500        | 1  | 635    | 522    | 539       | 107.8       |
| SGRD5      | FOOD SERVICE    | LD1  | 12"  | 500        | 1  | 368    | 508    | 533       | 106.6       |
| SGRD6      | FOOD SERVICE    | LD1  | 12"  | 500        | 1  | 363    | 420    | 495       | 99.0        |
| SGRD7      | WASHROOM        | LD1  | 10"  | 400        | 1  | 425    | 445    | 411       | 102.8       |
| SGRD8      | BACKROOM        | CD1  | 10"  | 300        | 1  | 493    | 310    | 328       | 109.3       |
| SGRD9      | STAGING         | CD1  | 6"   | 50         | 1  | 95     | 52     | 52        | 104.0       |
| SGRD10     | ELECTRICAL ROOM | CD1  | 12"  | 550        | 1  | 524    | 565    | 574       | 104.4       |
| Total      |                 |      |      | 4000       |    | 3962   | 3966   | 4147      | 103.68%     |

# National TAB

Project: 07-08-24 WAWA #05803 ROBERTSDALE, AL

System/Unit: AHU/RTU



Asset: RTU3

AREA:RETAIL

| Unit Data           |                |              |
|---------------------|----------------|--------------|
|                     | Design         | Actual       |
| MFG                 | LENNOX ENLIGHT | LENNOX       |
| Serial Num          | -              | 5623L02244   |
| Model Num           | LCT092H4E      | LCT092H4EG1Y |
| Type                | RTU            | RTU          |
| Configuration       | VERTICAL       | VERTICAL     |
| Num OA Filters 1    | -              | 2            |
| OA Filter Size 1    | -              | 23x14.25     |
| Num Final Filter 1  | -              | 4            |
| Final Filter Size 1 | -              | 20x25x2      |

| Test Data          |        |             |
|--------------------|--------|-------------|
|                    | Design | Actual      |
| SF CFM             | 3000   | 3131        |
| RA CFM             | 2610   | 2730        |
| OA CFM             | 390    | 401         |
| RL Voltage         | -      | 211/212/212 |
| RL Amperage        | -      | 2.9/3.0/3.0 |
| SF System SetPt    | -      | 65%         |
| RA Damper Position | -      | 77%         |
| RA Damper Type     | -      | ECONOMIZER  |
| OA Damper Position | -      | 23%         |
| OA Damper Type     | -      | ECONOMIZER  |

| Motor Data     |        |          |
|----------------|--------|----------|
|                | Design | Actual   |
| Motor MFG      | -      | EBMPAPST |
| Frame          | -      | N/A      |
| Horsepower     | 3.75   | 3.8      |
| Motor Rpm      | -      | 2200     |
| Phase          | 3      | 3        |
| Rated Voltage  | 208    | 200-240  |
| Rated Amperage | -      | 8.7      |
| Service Factor | -      | N/A      |

| Performance Data |        |        |
|------------------|--------|--------|
|                  | Design | Actual |
| MA Plenum SP     | -      | -0.75" |
| Fan Suction SP   | -      | -1.02" |
| Fan Discharge SP | -      | 0.46"  |
| Total ESP        | 0.5"   | 1.21"  |
| Fan Total SP     | -      | 1.48"  |

| Drive Data         |        |
|--------------------|--------|
|                    | Actual |
| Motor Sheave Size  | DD     |
| Motor Bore Size    | DD     |
| Motor Sheave SetPt | DD     |
| Fan Sheave Size    | DD     |
| Fan Sheave Bore    | DD     |
| Belt CL Distance   | DD     |
| Num of Belts       | DD     |
| Belt Size          | DD     |

Completed By: Mark Johnson on 07/11/2024

# National TAB

Project:07-08-24 WAWA #05803 ROBERTSDALE, AL

## AHU/RTU



### Diffuser Supply (GRD)

#### RTU3/RETAIL

| Asset      |                      |      |      |            |    |        |        |           |             |
|------------|----------------------|------|------|------------|----|--------|--------|-----------|-------------|
| Asset Name | Location             | Type | Size | DESIGN CFM | AK | CFM(1) | CFM(2) | FINAL CFM | % to design |
| SGRD1      | FRONT VESTIBULE      | CD2  | 12"  | 590        | 1  | 761    | 597    | 607       | 102.9       |
| SGRD2      | RETAIL               | LD1  | 10"  | 310        | 1  | 109    | 402    | 331       | 106.8       |
| SGRD3      | RETAIL               | LD1  | 10"  | 300        | 1  | 446    | 253    | 320       | 106.7       |
| SGRD4      | RETAIL               | LD1  | 10"  | 300        | 1  | 640    | 285    | 309       | 103.0       |
| SGRD5      | COFFEE/SPECIALTY BEV | LD1  | 10"  | 300        | 1  | 110    | 434    | 327       | 109.0       |
| SGRD6      | COFFEE/SPECIALTY BEV | LD1  | 10"  | 300        | 1  | 82     | 381    | 319       | 106.3       |
| SGRD7      | COFFEE/SPECIALTY BEV | LD1  | 10"  | 300        | 1  | 484    | 309    | 306       | 102.0       |
| SGRD8      | RETAIL               | LD1  | 10"  | 300        | 1  | 425    | 265    | 307       | 102.3       |
| SGRD9      | RETAIL               | LD1  | 10"  | 300        | 1  | 121    | 282    | 305       | 101.7       |
| Total      |                      |      |      | 3000       |    | 3178   | 3208   | 3131      | 104.37%     |

# National TAB

Project: 07-08-24 WAWA #05803 ROBERTSDALE, AL

System/Unit: FAN - Exhaust



Asset: EF1

AREA:

| Unit Data     |           |                  |
|---------------|-----------|------------------|
|               | Design    | Actual           |
| MFG           | GREENHECK | GREENHECK        |
| Model Num     | G-140     | G-140-B-4-1-22-X |
| Serial Num    | -         | 24139800         |
| Type          | DOWNBLAST | DOWNBLAST        |
| Configuration | VERTICAL  | VERTICAL         |

| Test Data        |        |                  |
|------------------|--------|------------------|
|                  | Design | Actual           |
| CFM              | 1150   | 1089             |
| Fan Rotation     | -      | CW               |
| System SetPt     | -      | SPEED CONTROLLER |
| RL Voltage       | -      | 96               |
| RL Amperage      | -      | 4.3              |
| Total ESP        | 0.25"  | 0.42"            |
| Fan Inlet SP     | -      | -0.42"           |
| Fan Discharge SP | -      | ATM              |

| Motor Data       |        |        |
|------------------|--------|--------|
|                  | Design | Actual |
| Motor MFG        | -      | N/A    |
| Frame            | -      | 48Y    |
| Horsepower       | 1/4    | 1/4    |
| Motor Rpm        | -      | 1140   |
| Phase            | 1      | 1      |
| Voltage (rated)  | 120    | 115    |
| Amperage (rated) | -      | 3.2    |
| Service Factor   | -      | 1.00   |

Completed By: Mark Johnson on 07/11/2024

# National TAB

Project:07-08-24 WAWA #05803 ROBERTSDALE, AL

## FAN - Exhaust



### Diffuser Ret/Exh (GRD)

EF1/

| Asset      |              |      |      |            |    |        |        |           |             |
|------------|--------------|------|------|------------|----|--------|--------|-----------|-------------|
| Asset Name | Location     | Type | Size | DESIGN CFM | AK | CFM(1) | CFM(2) | FINAL CFM | % to design |
| EGRD1      | FOOD SERVICE | G1   | 12"  | 500        |    | 748    | 493    | 508       | 101.6       |
| EGRD2      | WASHROOM     | G1   | 10"  | 300        |    | 455    | 432    | 292       | 97.3        |
| EGRD3      | STAGING      | G1   | 6"   | 100        |    | 31     | 109    | 107       | 107.0       |
| EGRD4      | WOMENS RR    | G3   | 6"   | 100        |    | 62     | 64     | 50        | 50.0        |
| EGRD5      | MENS RR      | G3   | 6"   | 50         |    | 85     | 82     | 65        | 130.0       |
| EGRD6      | MENS RR      | G3   | 6"   | 100        |    | 89     | 93     | 72        | 72.0        |
| Total      |              |      |      | 1150       |    | 1470   | 1273   | 1094      | 95.13%      |

# National TAB

Project: 07-08-24 WAWA #05803 ROBERTSDALE, AL

System/Unit: FAN - Exhaust



Asset: EF2

AREA:

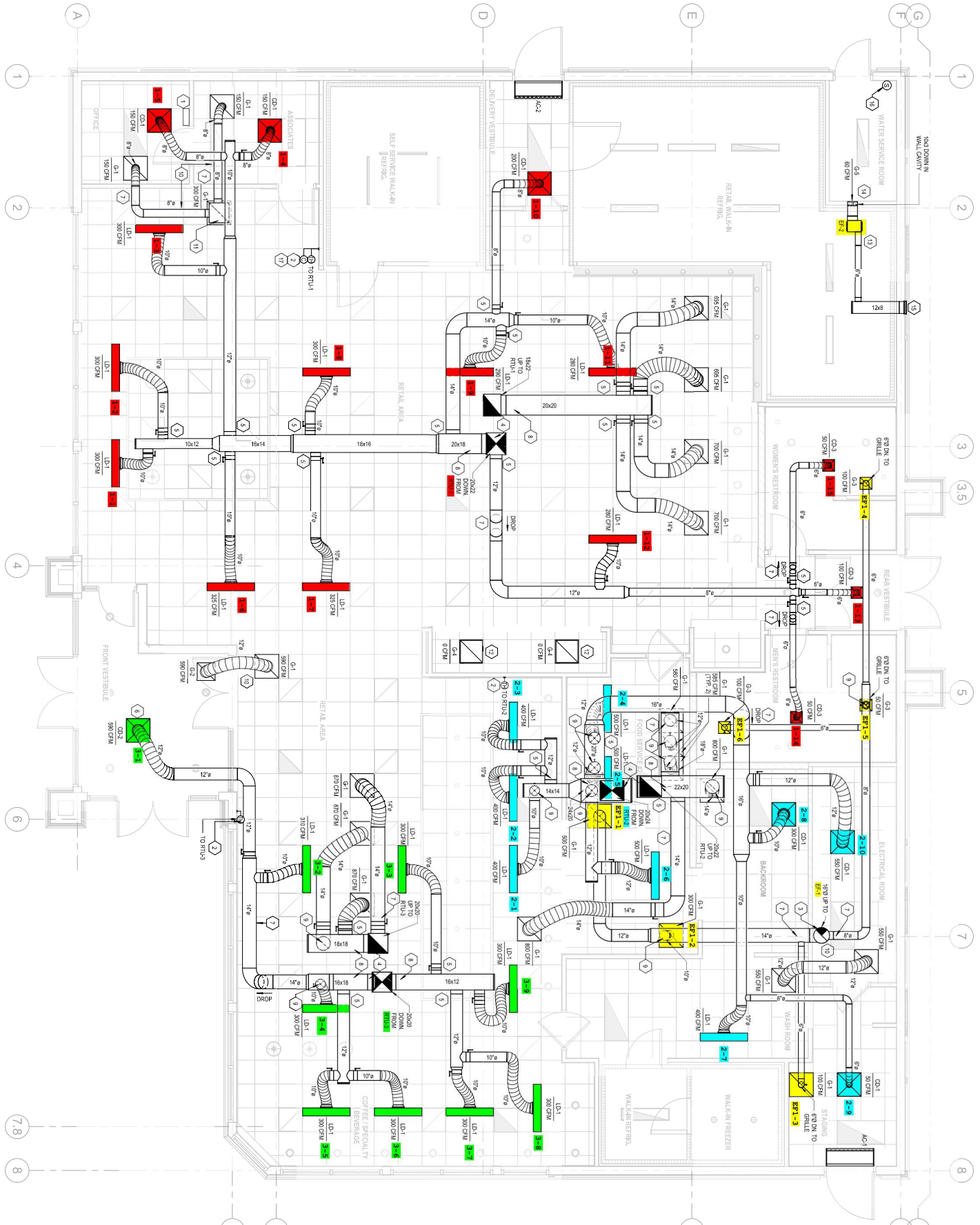
| Unit Data     |           |           |
|---------------|-----------|-----------|
|               | Design    | Actual    |
| MFG           | GREENHECK | GREENHECK |
| Model Num     | CSP-B110  | CSP-A110  |
| Serial Num    | -         | 24134467  |
| Type          | INLINE    | INLINE    |
| Configuration | VERTICAL  | VERTICAL  |

| Test Data    |        |        |
|--------------|--------|--------|
|              | Design | Actual |
| CFM          | 60     | 102    |
| Fan Rotation | -      | CCW    |
| System SetPt | -      | MIN    |
| RL Voltage   | -      | 123    |
| RL Amperage  | -      | 0.1    |

| Motor Data       |        |           |
|------------------|--------|-----------|
|                  | Design | Actual    |
| Motor MFG        | -      | GREENHECK |
| Frame            | -      | N/A       |
| Horsepower       | 21W    | N/A       |
| Motor Rpm        | -      | 950       |
| Phase            | 1      | 1         |
| Voltage (rated)  | 120    | 115       |
| Amperage (rated) | -      | 0.19      |
| Service Factor   | -      | N/A       |

Completed By: Mark Johnson on 07/11/2024

1 HVAC FLOOR PLAN  
 1/4" = 1'-0"



- 1 REAR WALL
- 2 REAR WALL
- 3 REAR WALL
- 4 REAR WALL
- 5 REAR WALL
- 6 REAR WALL
- 7 REAR WALL
- 8 REAR WALL
- 9 REAR WALL
- 10 REAR WALL
- 11 REAR WALL
- 12 REAR WALL
- 13 REAR WALL
- 14 REAR WALL
- 15 REAR WALL
- 16 REAR WALL
- 17 REAR WALL