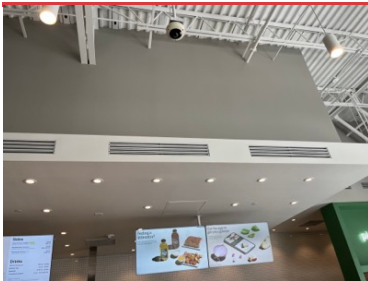




STOREFRONT



OVEN



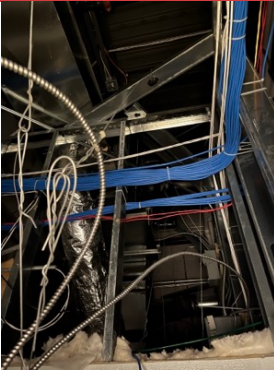
DINING AREA DIFFUSER DAMPERS NOT ACCESSIBLE

Unit totals were balanced.



RESTROOM EXHAUST DAMPERS NOT PRESENT

Fan total balanced.



UNITS NOT ACCESSIBLE DUE TO HEIGHT AND SPACE RESTRAINTS



AC 2 & 3 LOW FLOW. FANS IN HIGH SPEED.

NTAB discussed with Trane tech and MC regarding AC 2 and 3 being low on flow. NTAB was informed that the only speed control is via the thermostats, in which both units are currently in high speed. Store was comfortable in current conditions, but it is still suggested to increase fan speeds if at all possible on these units.