

**HOOD INFORMATION**

HOOD NO	TAG	MODEL	MANUFACTURER	LENGTH	MAX COOKING TEMP	TYPE	APPLIANCE DUTY	DESIGN CFM/FT	TOTAL EXH. CFM	EXHAUST PLENUM RISER(S)				HOOD CONSTRUCTION	HOOD CONFIG				
										WIDTH	LENG	HEIGHT	DIA		CFM	VEL	SP	END TO END	RDW
1	GRILL	3650 BD-2	CAPTIVEAIRE	4' 0"	600 DEG	I	HEAVY	175	700	700	8"	8"	4"	700	1575	-0.574'	430 SS WHERE EXPOSED	ALONE	ALONE
2	GRILL	3650 BD-2	CAPTIVEAIRE	4' 0"	600 DEG	I	HEAVY	175	700	700	8"	8"	4"	700	1575	-0.574'	430 SS WHERE EXPOSED	ALONE	ALONE
3	FRYER	3650 BD-2	CAPTIVEAIRE	4' 0"	600 DEG	I	HEAVY	175	700	700	8"	8"	4"	700	1575	-0.574'	430 SS WHERE EXPOSED	ALONE	ALONE
4	FRYER	3650 BD-2	CAPTIVEAIRE	4' 0"	600 DEG	I	HEAVY	175	700	700	8"	8"	4"	700	1575	-0.574'	430 SS WHERE EXPOSED	ALONE	ALONE

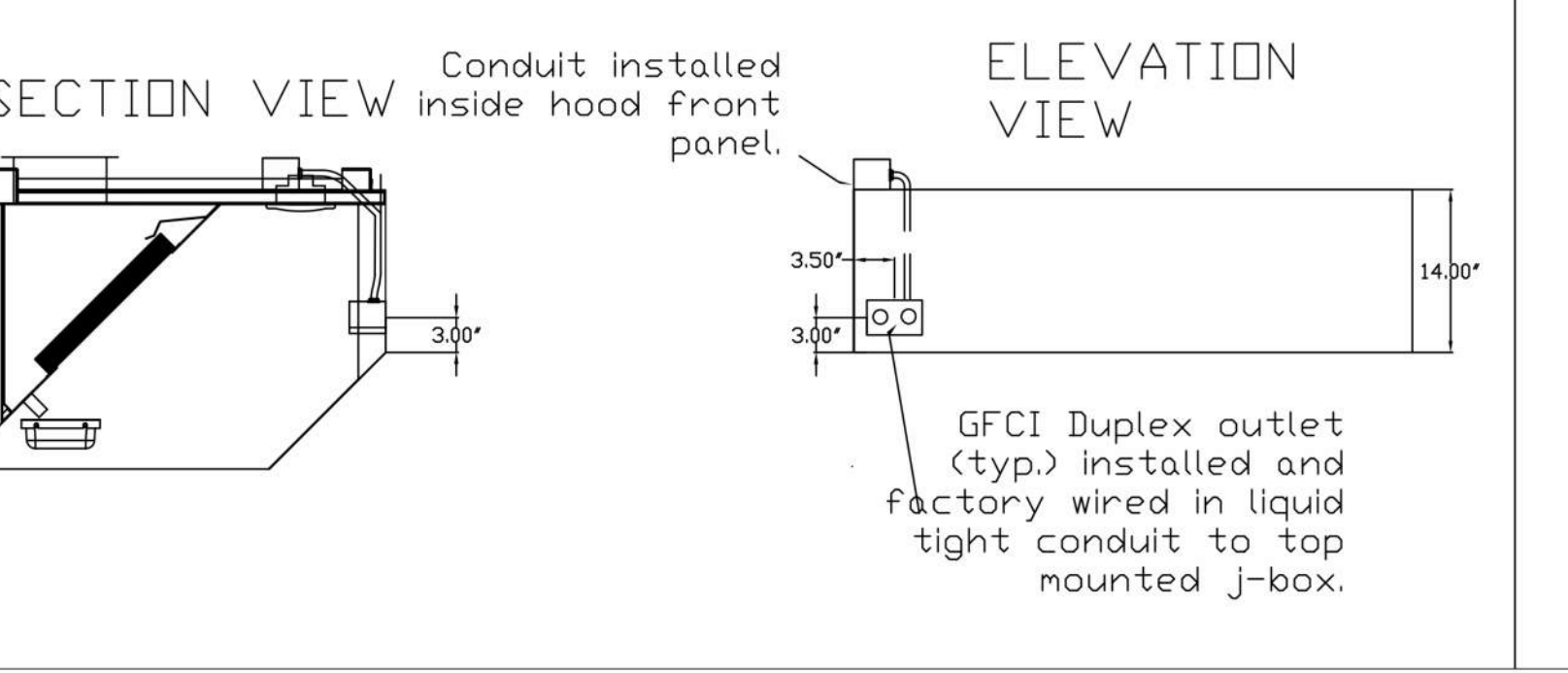
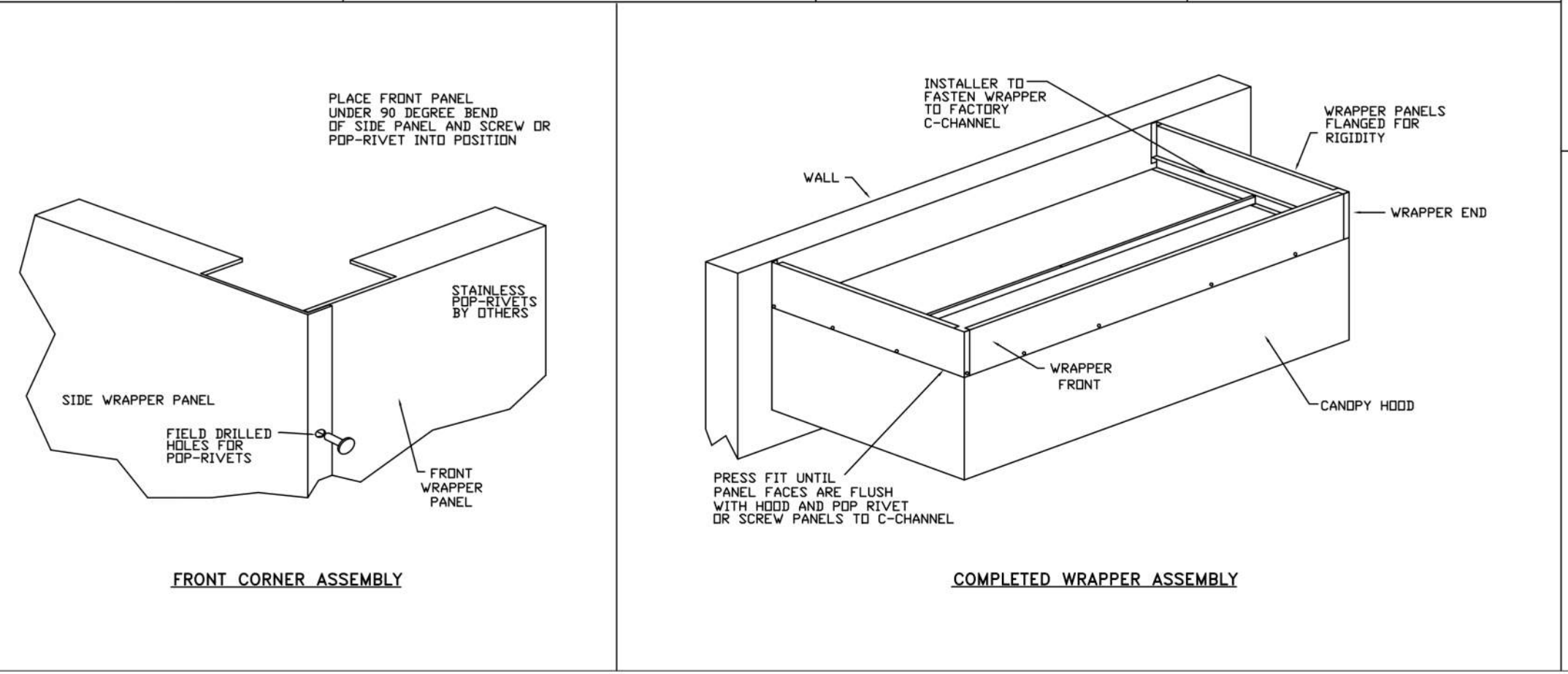
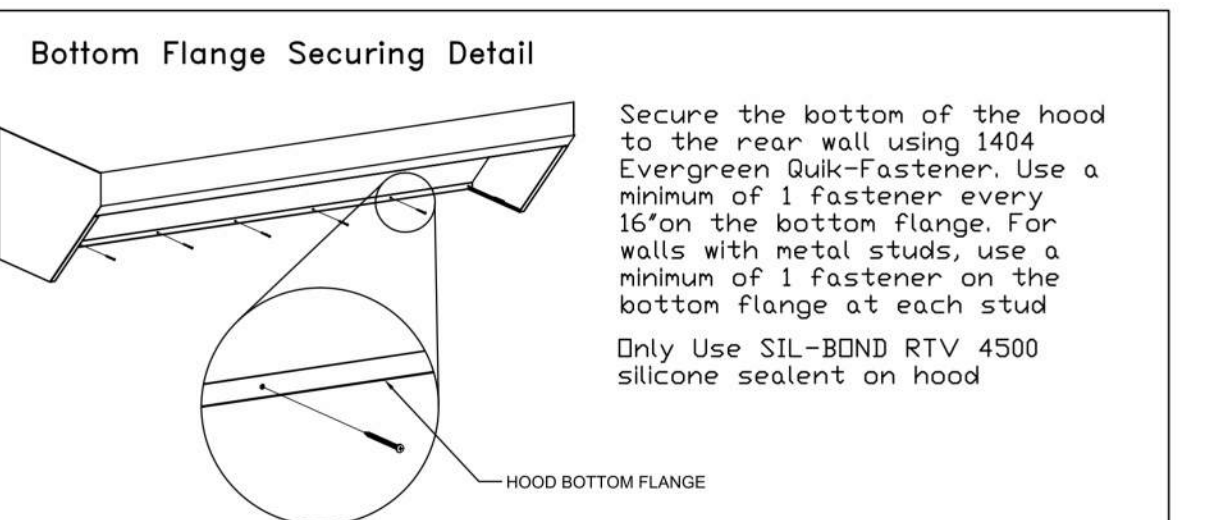
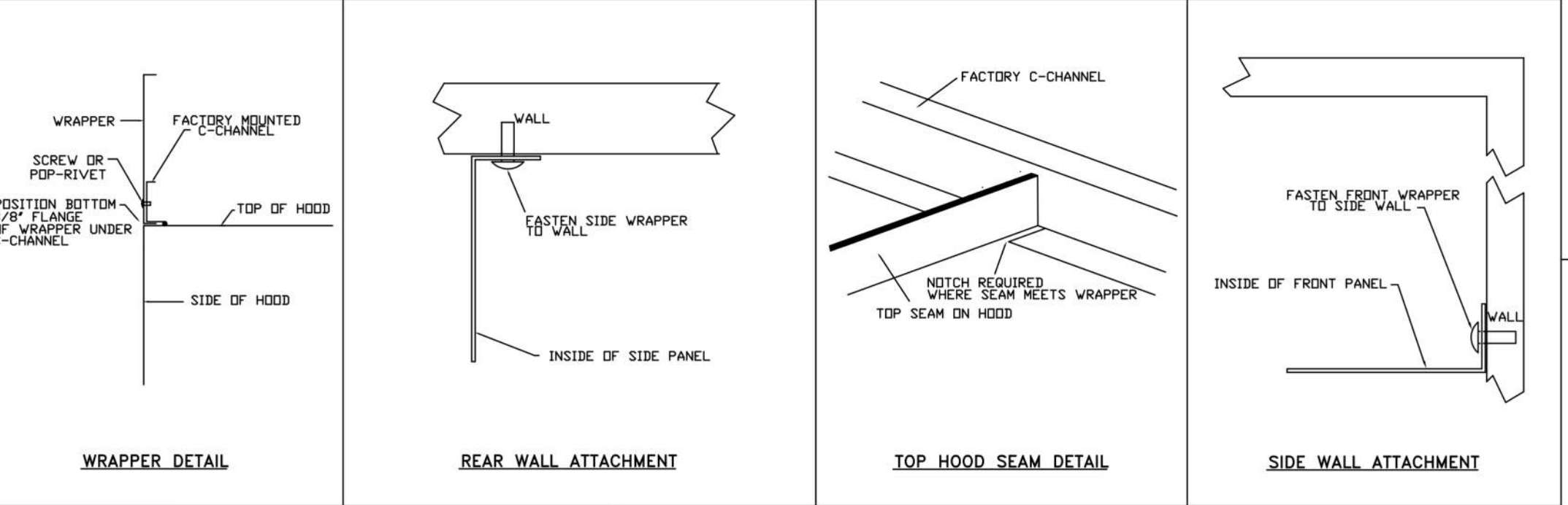
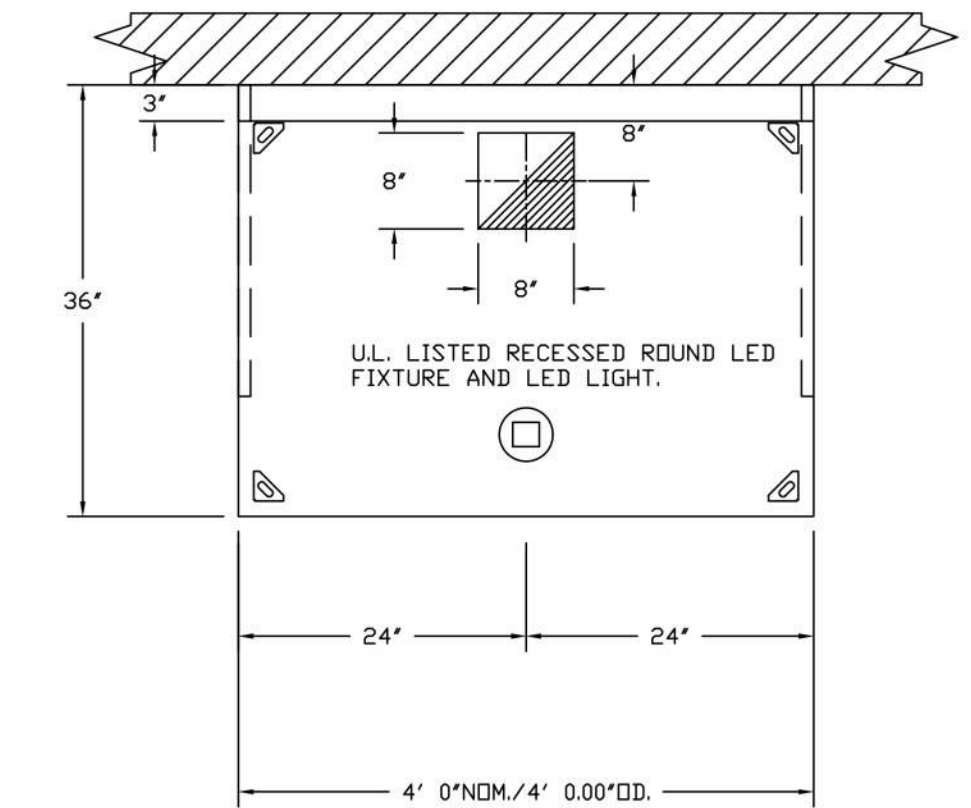
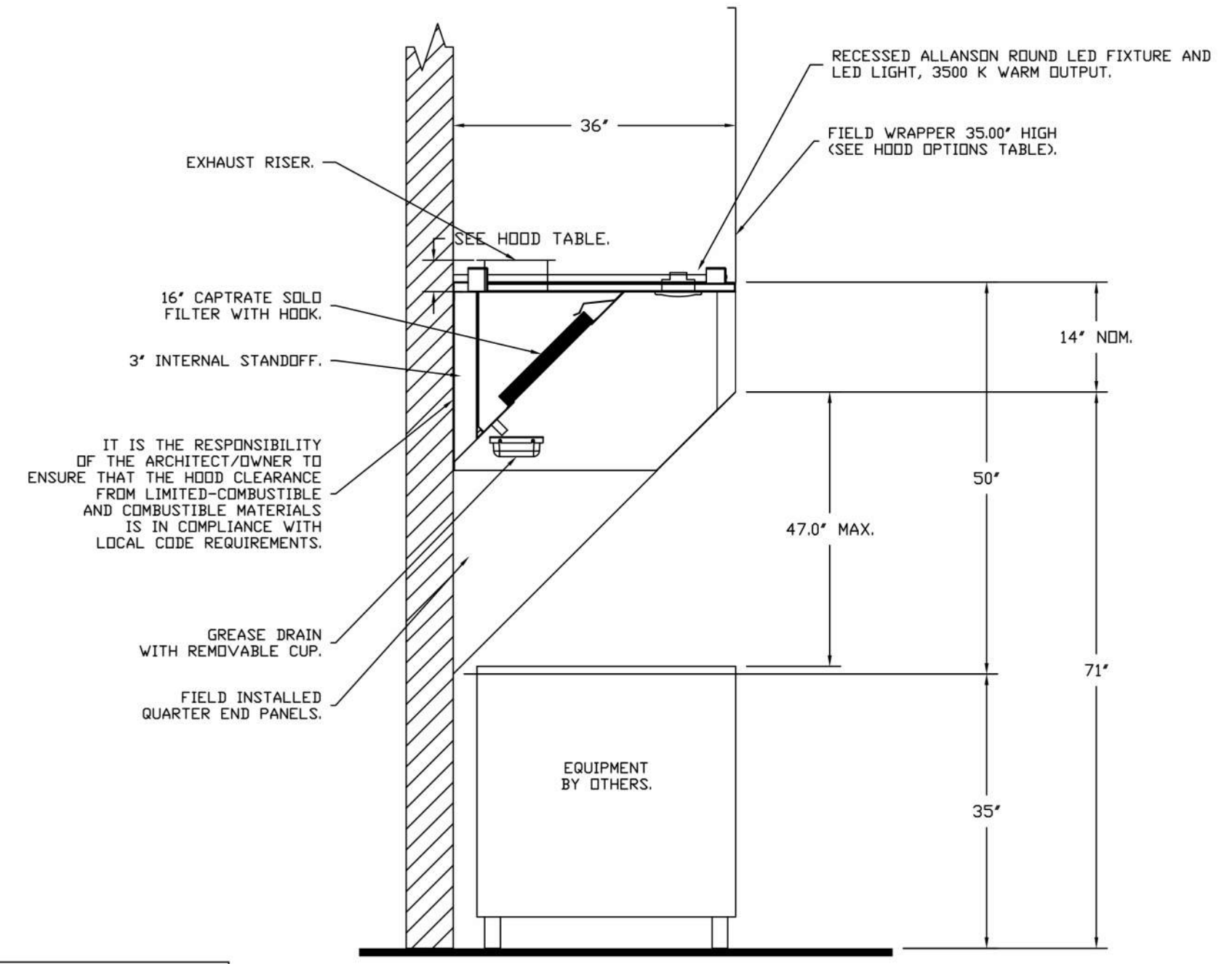
FOR QUESTIONS, CALL THE Eastern PA Mechanical REGION 108 PHONE: (267) 504-4186 EMAIL: rmg108@captiveaire.com

**HOOD INFORMATION**

HOOD NO	TAG	FILTER(S)				LIGHT(S)				UTILITY CABINET(S)				FIRE SYSTEM HANGING PIPING	HOOD WEIGHT	
		TYPE	QTY	HEIGHT	LENGTH	EFFICIENCY @ 7 MICRONS	QTY	TYPE	WIRE GUARD	LOCATION	SIZE	TYPE	SIZE			MODEL #
1	GRILL	CAPTRATE SOLID FILTER	2	16"	20"	85% SEE FILTER SPEC	1	RECESSED ROUND	NO	WALL MNT	12"x36"x24"	TANK FS	4.0/4.0		YES	215 LBS
2	GRILL	CAPTRATE SOLID FILTER	2	16"	20"	85% SEE FILTER SPEC	1	RECESSED ROUND	NO	WALL MNT	12"x36"x24"	TANK FS	4.0/4.0		YES	215 LBS
3	FRYER	CAPTRATE SOLID FILTER	2	16"	20"	85% SEE FILTER SPEC	1	RECESSED ROUND	NO						YES	215 LBS
4	FRYER	CAPTRATE SOLID FILTER	2	16"	20"	85% SEE FILTER SPEC	1	RECESSED ROUND	NO						YES	215 LBS

**HOOD OPTIONS**

HOOD NO	TAG	OPTION
1	FRYER	FIELD WRAPPER 37.00" HIGH FRONT, LEFT, RIGHT.
		RIGHT QUARTER END PANEL 26" TOP WIDTH, 0" BOTTOM WIDTH, 26" HIGH 430 SS.
		LEFT QUARTER END PANEL 26" TOP WIDTH, 0" BOTTOM WIDTH, 26" HIGH 430 SS.
2	FRYER	1-PINT GREASE CUP.
		RISER SENSOR INSTALL 6IN PLEN.
		FIELD WRAPPER 37.00" HIGH FRONT, LEFT, RIGHT.
3	GRILL	RIGHT QUARTER END PANEL 26" TOP WIDTH, 0" BOTTOM WIDTH, 26" HIGH 430 SS.
		LEFT QUARTER END PANEL 26" TOP WIDTH, 0" BOTTOM WIDTH, 26" HIGH 430 SS.
		1-PINT GREASE CUP.
4	GRILL	FIELD WRAPPER 37.00" HIGH FRONT, LEFT, RIGHT.
		RIGHT QUARTER END PANEL 26" TOP WIDTH, 0" BOTTOM WIDTH, 26" HIGH 430 SS.
		LEFT QUARTER END PANEL 26" TOP WIDTH, 0" BOTTOM WIDTH, 26" HIGH 430 SS.



**LISTINGS & CERTIFICATIONS**

CAPTIVEAIRE HOODS BUILT IN COMPLIANCE WITH:

#3054804-001 & #3054804-002  
Listed under ETL File number 3054804-001/002

**CLEARANCE TO COMBUSTIBLES**

CAPTIVEAIRE HOODS HAVE OPTIONAL CLEARANCE REDUCTION SYSTEMS AVAILABLE AS FOLLOWS:

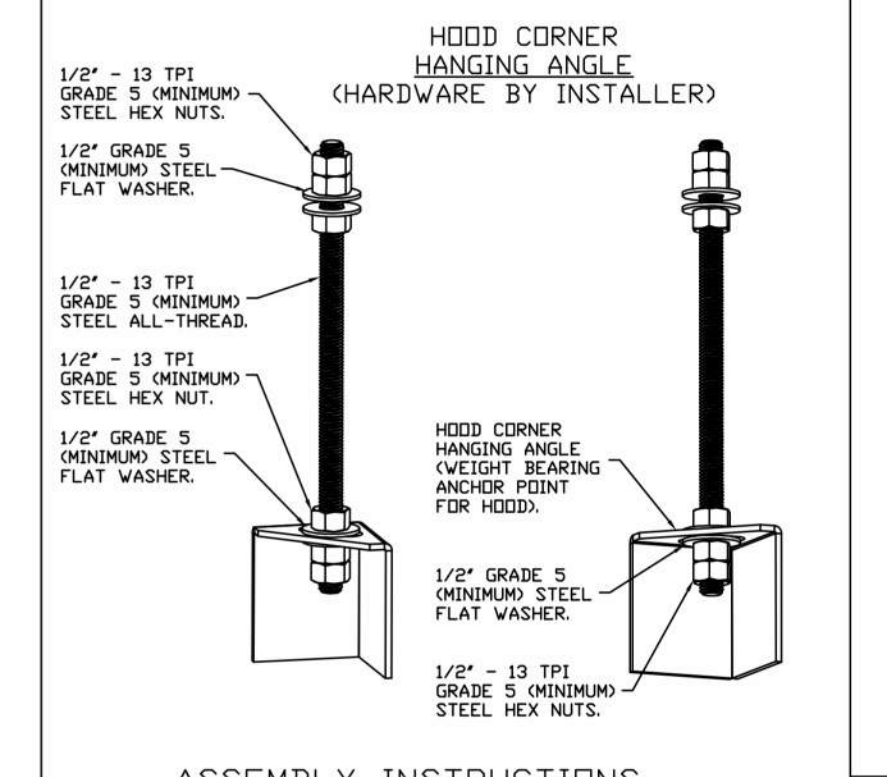
MATERIAL	CLEARANCE REDUCTION SYSTEM
NON-COMBUSTIBLE	NONE REQUIRED
LIMITED-COMBUSTIBLE	3" UNSULATED STANDOFF
COMBUSTIBLE	1" INSULATED STANDOFF

**GENERAL NOTES**

- INSTALLATION**
- ALL ELECTRICAL "FIELD" CONNECTIONS AND RELATED INTERCONNECTIONS BY ELECTRICAL CONTRACTORS.
  - ALL PLUMBING "FIELD" CONNECTIONS AND RELATED INTERCONNECTIONS BY PLUMBING CONTRACTORS.
  - HANGING BRACKETS LOCATED AND WELDED AS SHOWN ON PLANS. ALL OTHER HANGER MATERIALS PROVIDED BY INSTALLING CONTRACTORS.
  - ALL CONNECTIONS FROM CAPTIVEAIRE HOOD PER MECHANICAL PLANS.
  - COOKING EQUIPMENT TO SHUT OFF IN EVENT OF FIRE.
  - EXHAUST FANS TO TURN ON IN EVENT OF FIRE.
  - ALL LIGHT FIXTURES SHOWN INSTALLED BY CAPTIVEAIRE ARE FACTORY PREWIRED. INTERCONNECTIONS BETWEEN HOODS AND TO SWITCHES ARE BY ELECTRICAL CONTRACTOR.
  - LAMPS FOR LIGHT FIXTURES BY INSTALLING CONTRACTORS.
  - SEISMIC RESTRAINTS ARE RESPONSIBILITY OF INSTALLING CONTRACTOR.
  - INSTALLING CONTRACTORS ASSUME ALL RELATED RESPONSIBILITY FOR VERIFICATION OF DIMENSIONAL DATA CONTAINED ON THESE DOCUMENTS FOR ACCURACY, INTEGRATION, AND ADMINISTRATION OF CODE REQUIREMENTS IN EFFECT PRIOR TO ANY RELEASE FOR PRODUCTION OF EQUIPMENT SHOWN.
- BALANCE**
- KITCHEN HOODS MUST BE BALANCED WITH KITCHEN.
  - KITCHEN SHALL BE NEGATIVE WITH RESPECT TO DINING AREA.
  - RESTAURANT SHALL BE POSITIVE WITH RESPECT TO AMBIENT PRESSURE.
- ADDITIONAL**
- WRITTEN HOOD DIMENSIONS HAVE PRECEDENCE OVER SCALE.
  - SIGNED AND "APPROVED" COPIES OF THIS DOCUMENT MUST BE PRESENT BY THE FACTORY PRIOR TO COMMENCEMENT OF FABRICATION.

**HVAC DISTRIBUTION NOTE**

IT IS RECOMMENDED NOT TO INSTALL HIGH VELOCITY DIFFUSERS OR HVAC RETURNS WITHIN TEN (10) FEET OF THE EXHAUST HOOD. PERFORATED, LOW-VELOCITY, NON-DIRECTIONAL DIFFUSERS ARE RECOMMENDED.



**DATE:** 4/24/2023  
**DWG.#:** 5967839  
**DRAWN BY:** Joe.shilba  
**SCALE:** 3/4" = 1'-0"  
**MASTER DRAWING**

**VERIFY CEILING HEIGHT**

HEIGHT REQUIRED TO VERIFY THAT HOOD FITS SPACE AND TO SIZE THE ENCLOSURE PANELS

**REVISIONS**

DESCRIPTION	DATE

**CAPTIVEAIRE**  
Eastern PA Mechanical  
www.captiveaire.com  
PO Box 2520, 1 Union Ave., Bellefonte, PA, 15504 PHONE: (267) 504-4126 EMAIL: rmg108@captiveaire.com

Shake Shack-1375-Pike 7, VA-R2(Kitchen)  
VIENNA, VA, 22182

**DATE:** 4/24/2023  
**DWG.#:** 5967839  
**DRAWN BY:** Joe.shilba  
**SCALE:** 3/4" = 1'-0"  
**MASTER DRAWING**  
**SHEET NO.** 1

**SHAKE SHACK**  
VA - 1375 - PIKE 7  
8350 LEESBURG PIKE  
VIENNA, VA 22182

**Gensler**  
2020 K STREET NW  
SUITE 200  
WASHINGTON, DC 20006  
UNITED STATES  
TEL 202.721.5200  
FAX 202.872.8587

**kpff**  
700 ENGINEER  
SUITE 2100  
LOS ANGELES, CA 90017  
TEL 213.418.0201

**INFRASTRUCTURE FACTOR CONSULTING, INC.**  
MEP ENGINEER  
2361 ROSECRANS AVENUE  
SUITE 368  
EL SEGUNDO, CA 90245  
TEL 310.220.2745

**TriMark**  
FOODSERVICE CONSULTANT  
505 COLLINS ST  
PO BOX 3915  
SOUTH ATTLEBORO  
MA 02703  
TEL 508.399.6000  
FAX 508.761.3620

Date	Description
05/16/2022	PERMIT AND BID
07/25/2022	ADDENDUM #1
09/02/2022	ADDENDUM #2
10/07/2022	ISSUE FOR BID
02/10/2023	BID SET
04/26/2023	SKETCH
06/27/2023	ISSUE FOR CONSTRUCTION

Seal / Signature

**Project Name**  
PIKE 7  
**Project Number**  
069.6538.000  
**Description**  
CAPTIVEAIRE DRAWINGS

**Scale**

**M801**

**FIRE SYSTEM INFORMATION**

FIRE SYSTEM NO	TAG	TYPE	SIZE	FLOW POINTS	INSTALLATION	
					SYSTEM	LOCATION ON HOOD
1		TANK FS	4.0/4.0	36	WALL UTILITY CABINET LEFT	N/A
2		TANK FS	4.0/4.0	36	WALL UTILITY CABINET LEFT	N/A

**GAS VALVE(S)**

FIRE SYSTEM NO	TAG	TYPE	SIZE	SUPPLIED BY
1		SC ELECTRICAL	2.000	CAPTIVEAIRE SYSTEMS
2		SC ELECTRICAL	2.000	CAPTIVEAIRE SYSTEMS

**NOTES**

- FIELD PIPE DROPS AS SHOWN
- PIPING, ELBOWS, TEES, AND NOZZLES SUPPLIED BY CAS.
- FIELD INSTALLED DROP: FACTORY WILL PROVIDE QTY 2 60IN LONG PIECES OF CHROME PLATED PIPING SHIPPED LOOSE TO BE FIELD-INSTALLED.
- SHIP LOOSE DROP: FACTORY WILL PROVIDE THE EXACT CHROME PIPE LENGTH NEEDED SHIPPED LOOSE TO BE FIELD-INSTALLED.
- RELOCATE NOZZLES IF FLOW PATTERN IS BLOCKED BY SHELVING, SALAMANDERS, ETC.
- OVERLAPPING COVERAGE SHALL NOT BE USED ON ANY APPLIANCE WITH AN OBSTRUCTION. IF APPLICABLE, EXTENDED PRE-PIPED DROPS ARE SHIPPED LOOSE.
- FACTORY PIPING EXTENDS A MAXIMUM OF 6" ABOVE THE TOP OF THE HOOD.
- APPLIANCE DIMENSIONS LISTED REPRESENT THE COOKING SURFACE SIZE, NOT THE OVERALL APPLIANCE SIZE.
- THIS FIRE SYSTEM COMPLIES WITH U.L. 300 REQUIREMENTS.
- DL-F NOZZLE PART NUMBER REPLACES 3070-3/8H-10-SS

SYSTEM SIZE: TANK-SP-2-WC TOTAL FP REQUIRED: 36.  
 HOOD # 2 4' 0.00" LONG x 36" WIDE x 50" HIGH.  
 RISER # 1 SIZE: 8" x 8"  
 HOOD # 2 METAL BLOW-OFF CAPS INCLUDED.  
 HOOD # 3 4' 0.00" LONG x 36" WIDE x 50" HIGH.  
 RISER # 1 SIZE: 8" x 8"  
 HOOD # 3 METAL BLOW-OFF CAPS INCLUDED.

- HEAVY-DUTY APPLIANCES (RATED 600°F) WILL REQUIRE AN ADDITIONAL DOWNSTREAM FIRESTAT IN THE EVENT THAT THE DUCTWORK CONTAINS ANY HORIZONTAL RUNS OVER 25 FT IN LENGTH.
- MEDIUM TO LIGHT-DUTY APPLIANCES (RATED 450°F) WILL NOT REQUIRE ANY ADDITIONAL DOWNSTREAM DETECTION.

**LEGEND - FIRE CABINET TANK SYSTEM**

- 4 GALLON TANK.
- PRIMARY ACTUATOR RELEASE.
- SECONDARY ACTUATOR RELEASE.
- PRESSURE SUPERVISION SWITCH.
- PRIMARY HOSE ASSEMBLY.
- SECONDARY HOSE ASSEMBLY.
- REMOTE MANUAL ACTUATION DEVICE.

**NOTES**

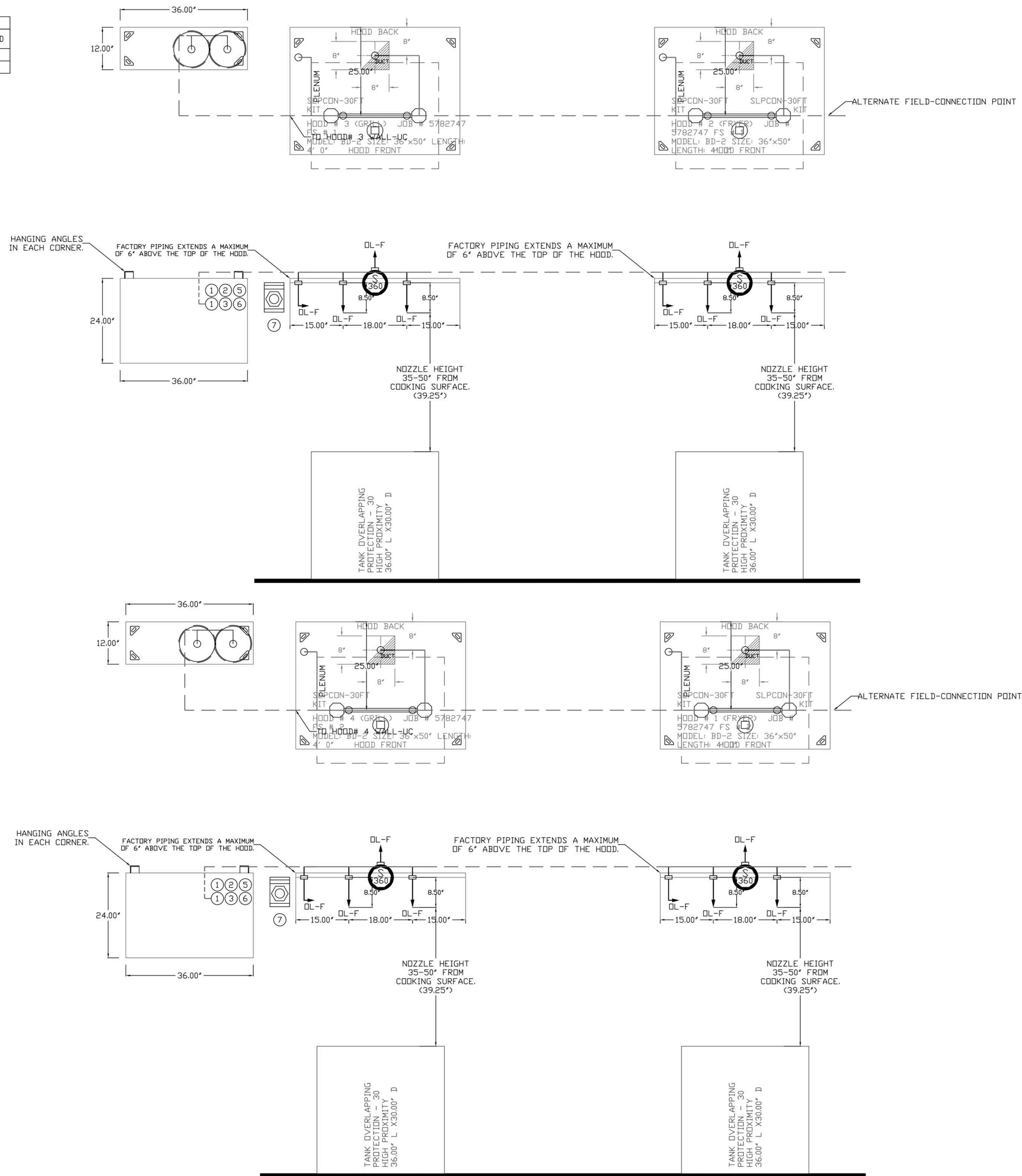
- FIELD PIPE DROPS AS SHOWN
- PIPING, ELBOWS, TEES, AND NOZZLES SUPPLIED BY CAS.
- FIELD INSTALLED DROP: FACTORY WILL PROVIDE QTY 2 60IN LONG PIECES OF CHROME PLATED PIPING SHIPPED LOOSE TO BE FIELD-INSTALLED.
- SHIP LOOSE DROP: FACTORY WILL PROVIDE THE EXACT CHROME PIPE LENGTH NEEDED SHIPPED LOOSE TO BE FIELD-INSTALLED.
- RELOCATE NOZZLES IF FLOW PATTERN IS BLOCKED BY SHELVING, SALAMANDERS, ETC.
- OVERLAPPING COVERAGE SHALL NOT BE USED ON ANY APPLIANCE WITH AN OBSTRUCTION. IF APPLICABLE, EXTENDED PRE-PIPED DROPS ARE SHIPPED LOOSE.
- FACTORY PIPING EXTENDS A MAXIMUM OF 6" ABOVE THE TOP OF THE HOOD.
- APPLIANCE DIMENSIONS LISTED REPRESENT THE COOKING SURFACE SIZE, NOT THE OVERALL APPLIANCE SIZE.
- THIS FIRE SYSTEM COMPLIES WITH U.L. 300 REQUIREMENTS.
- DL-F NOZZLE PART NUMBER REPLACES 3070-3/8H-10-SS

SYSTEM SIZE: TANK-SP-2-WC TOTAL FP REQUIRED: 36.  
 HOOD # 1 4' 0.00" LONG x 36" WIDE x 50" HIGH.  
 RISER # 1 SIZE: 8" x 8"  
 HOOD # 1 METAL BLOW-OFF CAPS INCLUDED.  
 HOOD # 4 4' 0.00" LONG x 36" WIDE x 50" HIGH.  
 RISER # 1 SIZE: 8" x 8"  
 HOOD # 4 METAL BLOW-OFF CAPS INCLUDED.

- HEAVY-DUTY APPLIANCES (RATED 600°F) WILL REQUIRE AN ADDITIONAL DOWNSTREAM FIRESTAT IN THE EVENT THAT THE DUCTWORK CONTAINS ANY HORIZONTAL RUNS OVER 25 FT IN LENGTH.
- MEDIUM TO LIGHT-DUTY APPLIANCES (RATED 450°F) WILL NOT REQUIRE ANY ADDITIONAL DOWNSTREAM DETECTION.

**LEGEND - FIRE CABINET TANK SYSTEM**

- 4 GALLON TANK.
- PRIMARY ACTUATOR RELEASE.
- SECONDARY ACTUATOR RELEASE.
- PRESSURE SUPERVISION SWITCH.
- PRIMARY HOSE ASSEMBLY.
- SECONDARY HOSE ASSEMBLY.
- REMOTE MANUAL ACTUATION DEVICE.



**REVISIONS**

NO.	DESCRIPTION	DATE



**CAPTIVE MECHANICAL**  
 Eastern PA Mechanical  
 www.captiveair.com  
 www.easternpa.com  
 PO Box 2520, 1 Union Ave., Bellefonte, PA, 16804 PHONE: (814) 504-1126 EMAIL: engr108@captiveair.com

**TriMark**  
 Foodservice Equipment, Supplies and Design  
 FOODSERVICE CONSULTANT  
 505 COLLINS ST  
 PO BOX 3505  
 SOUTH ATTLEBORO  
 MA 02703  
 TEL 508.399.6000  
 FAX 508.761.3620

Snake Shack-1375-Pike 7, VA-R2(Kitchen)  
 VIENNA, VA, 22182

**DATE:** 4/24/2023  
**DWG.#:** 5967839  
**DRAWN BY:** Joe.shilba  
**SCALE:** 3/4" = 1'-0"  
**MASTER DRAWING**

**SHEET NO.**  
 2



VA - 1375 - PIKE 7  
 8350 LEESBURG PIKE  
 VIENNA, VA 22182

**Gensler**

2020 K STREET NW  
 SUITE 200  
 WASHINGTON, DC 20006  
 UNITED STATES  
 SATELLITE OFFICE:  
 400 N ASHLEY DRIVE  
 SUITE C400  
 TAMPA, FL 33602  
 UNITED STATES  
 TEL 202.721.5200  
 FAX 202.872.8587  
 TEL 813.204.9000  
 FAX 813.223.6948

**kpff**

ST ENGINEER  
 700 S FLOWER ST  
 SUITE 2100  
 LOS ANGELES, CA 90017  
 TEL 213.418.0201

**INFRASTRUCTURE FACTOR CONSULTING, INC.**

MEP ENGINEER  
 2361 ROSECRANS AVENUE  
 SUITE 368  
 EL SEGUNDO, CA 90245  
 TEL 310.220.2745

**TriMark**

FOODSERVICE CONSULTANT  
 505 COLLINS ST  
 PO BOX 3505  
 SOUTH ATTLEBORO  
 MA 02703  
 TEL 508.399.6000  
 FAX 508.761.3620

Date	Description
05/16/2022	PERMIT AND BID
07/25/2022	ADDENDUM #1
09/02/2022	ADDENDUM #2
10/07/2022	ISSUE FOR BID
02/10/2023	BID SET
04/26/2023	SKETCH
06/27/2023	ISSUE FOR CONSTRUCTION

Seal / Signature



**Project Name**  
 PIKE 7  
**Project Number**  
 069.6538.000  
**Description**  
 CAPTIVEAIRE DRAWINGS

Scale

**M802**

**EXHAUST FAN INFORMATION**

FAN UNIT NO	TAG	QTY	FAN UNIT MODEL #	MANUFACTURER	CFM	ESP	RPM	MOTOR ENCL	HP	BHP	PHASE	VOLT	FLA	DISCHARGE VELOCITY	WEIGHT (LBS)	SDNES
1	KEF-1	1	DUS0HFA	CAPTIVEAIRE	700	1.250	1549	TEAD-ECM	0.500	0.3840	1	208	3.8	266 FPM	82	16.7067343199543
2	KEF-2	1	DUS0HFA	CAPTIVEAIRE	700	1.250	1549	TEAD-ECM	0.500	0.3840	1	208	3.8	266 FPM	82	16.7067343199543
3	KEF-3	1	DUS0HFA	CAPTIVEAIRE	700	1.250	1549	TEAD-ECM	0.500	0.3840	1	208	3.8	266 FPM	82	16.7067343199543
4	KEF-4	1	DUS0HFA	CAPTIVEAIRE	700	1.250	1549	TEAD-ECM	0.500	0.3840	1	208	3.8	266 FPM	82	16.7067343199543

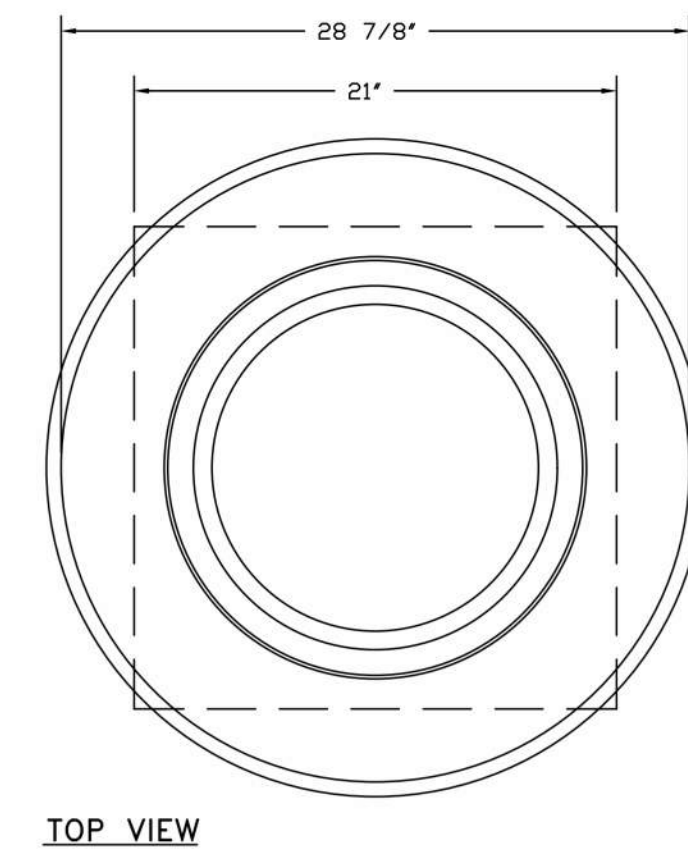
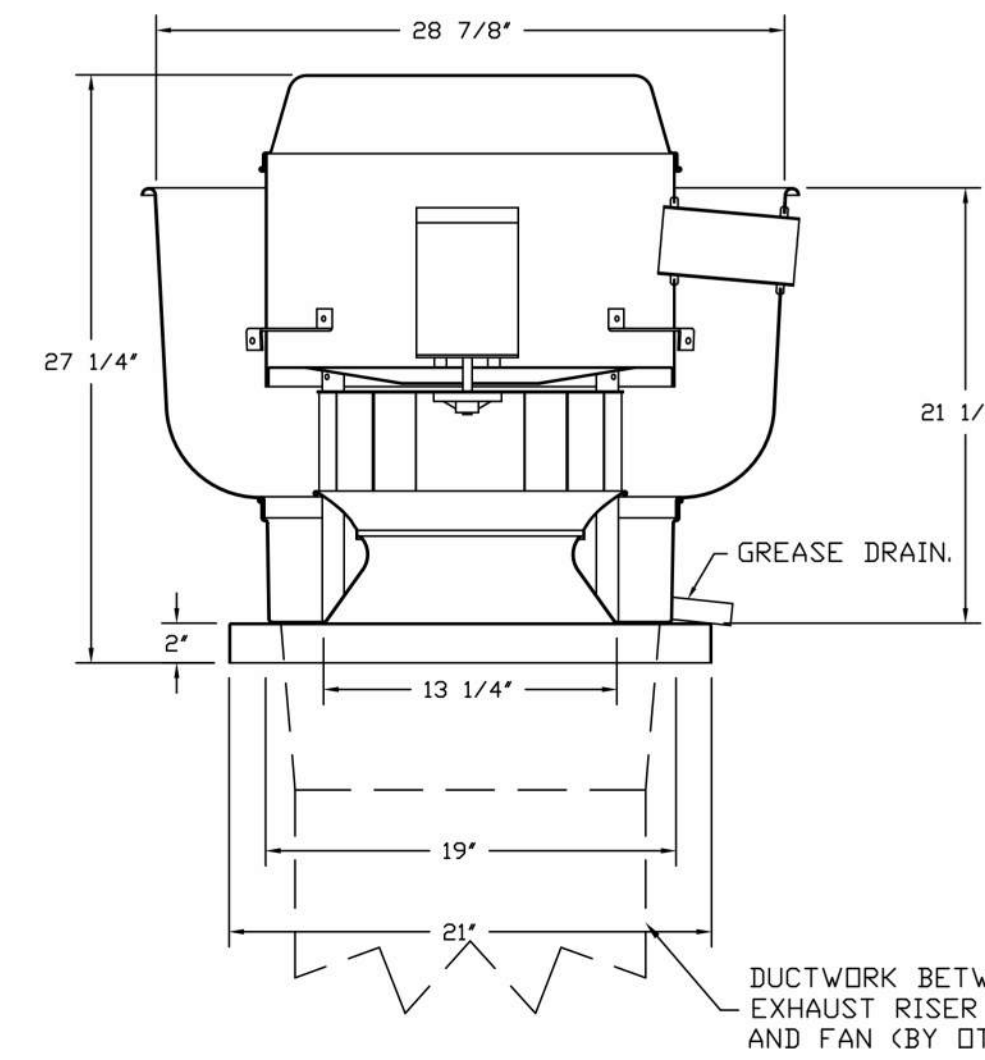
**FAN OPTIONS**

FAN UNIT NO	TAG	QTY	DESCRIPTION
1	KEF-1	1	GREASE BOX
		1	FAN BASE CERAMIC SEAL - INSTALLED AT PLANT - FOR GREASE DUCTS
		1	ECM WIRING PACKAGE - PWM SIGNAL FROM ECPM03 PREWIRE (TELCO MOTOR), CCW ROTATION
		1	2 YEAR PARTS WARRANTY
2	KEF-2	1	GREASE BOX
		1	FAN BASE CERAMIC SEAL - INSTALLED AT PLANT - FOR GREASE DUCTS
		1	ECM WIRING PACKAGE - PWM SIGNAL FROM ECPM03 PREWIRE (TELCO MOTOR), CCW ROTATION
		1	2 YEAR PARTS WARRANTY
3	KEF-3	1	GREASE BOX
		1	FAN BASE CERAMIC SEAL - INSTALLED AT PLANT - FOR GREASE DUCTS
		1	ECM WIRING PACKAGE - PWM SIGNAL FROM ECPM03 PREWIRE (TELCO MOTOR), CCW ROTATION
		1	2 YEAR PARTS WARRANTY
4	KEF-4	1	GREASE BOX
		1	FAN BASE CERAMIC SEAL - INSTALLED AT PLANT - FOR GREASE DUCTS
		1	ECM WIRING PACKAGE - PWM SIGNAL FROM ECPM03 PREWIRE (TELCO MOTOR), CCW ROTATION
		1	2 YEAR PARTS WARRANTY

**CURB ASSEMBLIES**

NO	DN FAN	TAG	WEIGHT	ITEM	SIZE
1	# 1	KEF-1	34 LBS	CURB	19.500"W X 19.500"L X 24.000"H ALONG LENGTH, RIGHT VENTED HINGED.
2	# 2	KEF-2	34 LBS	CURB	19.500"W X 19.500"L X 24.000"H ALONG LENGTH, RIGHT VENTED HINGED.
3	# 3	KEF-3	34 LBS	CURB	19.500"W X 19.500"L X 24.000"H ALONG LENGTH, RIGHT VENTED HINGED.
4	# 4	KEF-4	34 LBS	CURB	19.500"W X 19.500"L X 24.000"H ALONG LENGTH, RIGHT VENTED HINGED.

FANS #1 (KEF-1), #2 (KEF-2), #3 (KEF-3), #4 (KEF-4) - DUS0HFA EXHAUST FAN



**FEATURES:**

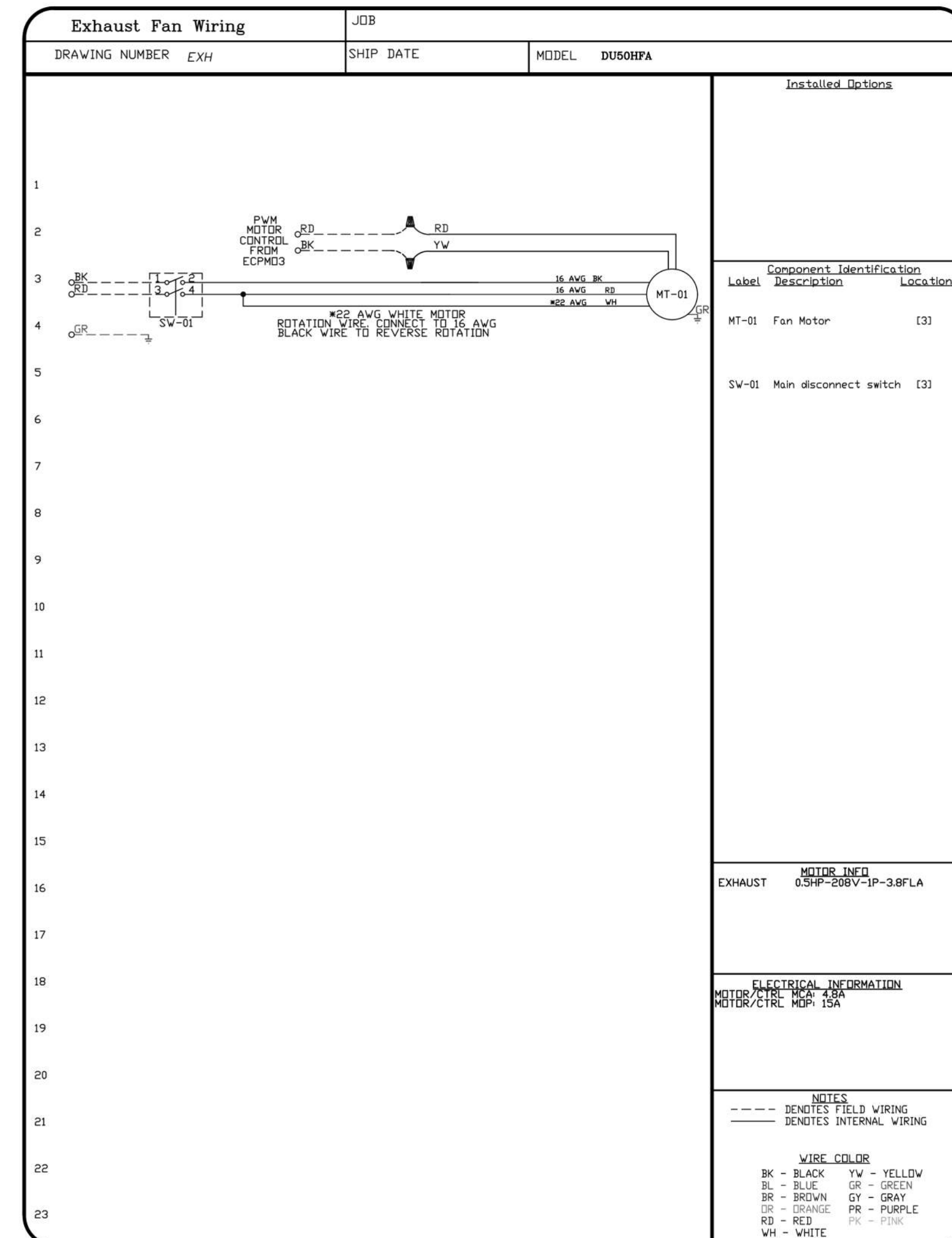
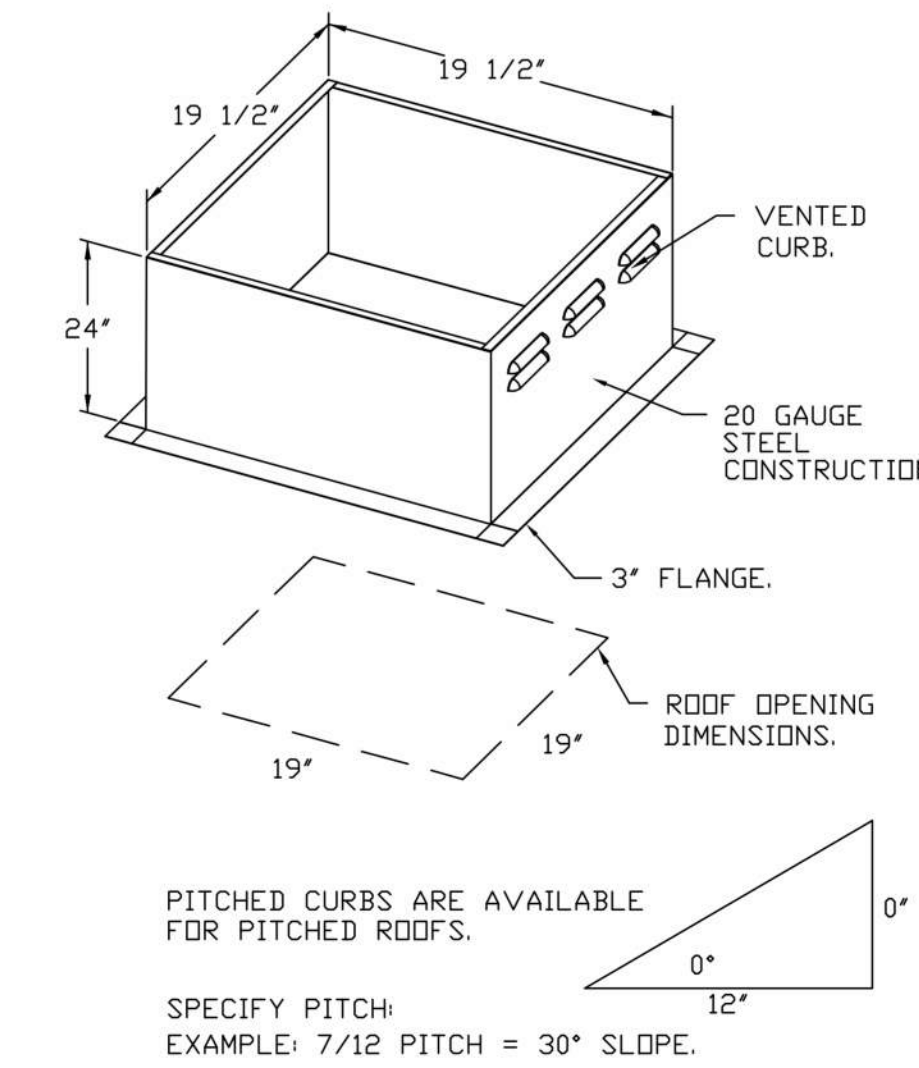
- DIRECT DRIVE CONSTRUCTION (NO BELTS/PULLEYS).
- ROOF MOUNTED FANS.
- RESTAURANT MODEL.
- UL705 AND UL766 AND UL-C-5645
- VARIABLE SPEED CONTROL.
- INTERNAL WIRING.
- THERMAL OVERLOAD PROTECTION (SINGLE PHASE).
- HIGH HEAT OPERATION 300°F (149°C).
- GREASE CLASSIFICATION TESTING.
- NEMA 3R SAFETY DISCONNECT SWITCH.

**NORMAL TEMPERATURE TEST**  
EXHAUST FAN MUST OPERATE CONTINUOUSLY WHILE EXHAUSTING AIR AT 300°F (149°C) UNTIL ALL FAN PARTS HAVE REACHED THERMAL EQUILIBRIUM AND WITHOUT ANY DETERIORATING EFFECTS TO THE FAN WHICH WOULD CAUSE UNSAFE OPERATION.

**ABNORMAL FLARE-UP TEST**  
EXHAUST FAN MUST OPERATE CONTINUOUSLY WHILE EXHAUSTING BURNING GREASE VAPORS AT 600°F (316°C) FOR A PERIOD OF 15 MINUTES WITHOUT THE FAN BECOMING DAMAGED TO ANY EXTENT THAT COULD CAUSE AN UNSAFE CONDITION.

**OPTIONS:**

- GREASE BOX.
- FAN BASE CERAMIC SEAL - INSTALLED AT PLANT - FOR GREASE DUCTS.
- ECM WIRING PACKAGE - PWM SIGNAL FROM ECPM03 PREWIRE (TELCO MOTOR), CCW ROTATION.
- 2 YEAR PARTS WARRANTY.



REVISIONS	
DESCRIPTION	DATE

**CAPTIVEAIRE**

Eastern PA Mechanical

www.captiveaire.com

PO Box 2520, 1 Union Ave., Belle Cymryd, PA, 15004 PHONE: (207) 504-1426 EMAIL: mgr106@captiveaire.com

Shake Shack-1375-Pike 7, VA-R2(Kitchen)  
VIENNA, VA, 22182

**DATE:** 4/24/2023

**DWG.#:** 5967839

**DRAWN BY:** Joe.shilba

**SCALE:** 3/4" = 1'-0"

**MASTER DRAWING**

**SHEET NO.**  
3



VA - 1375 - PIKE 7  
8350 LEESBURG PIKE  
VIENNA, VA 22182

**Gensler**

2020 K STREET NW  
SUITE 200  
WASHINGTON, DC 20006  
UNITED STATES  
TEL 202.721.5200  
FAX 202.872.8587

SATELLITE OFFICE:  
400 N ASHLEY DRIVE  
SUITE C400  
TAMPA, FL 33602  
UNITED STATES  
TEL 813.204.9000  
FAX 813.223.6948



ST ENGINEER  
700 S FLOWER ST  
SUITE 2100  
LOS ANGELES, CA 90017  
TEL 213.418.0201



MEP ENGINEER  
2361 ROSECRANS AVENUE  
SUITE 368  
EL SEGUNDO, CA 90245  
TEL 310.220.2745



FOODSERVICE CONSULTANT  
505 COLLINS ST  
PO BOX 3505  
SOUTH ATTLEBORO  
MA 02703  
TEL 508.399.6000  
FAX 508.761.3620

Date	Description
05/16/2022	PERMIT AND BID
07/25/2022	ADDENDUM #1
09/02/2022	ADDENDUM #2
10/07/2022	ISSUE FOR BID
02/10/2023	BID SET
04/26/2023	SKETCH
06/27/2023	ISSUE FOR CONSTRUCTION

Seal / Signature



Project Name  
**PIKE 7**

Project Number  
**069.6538.000**

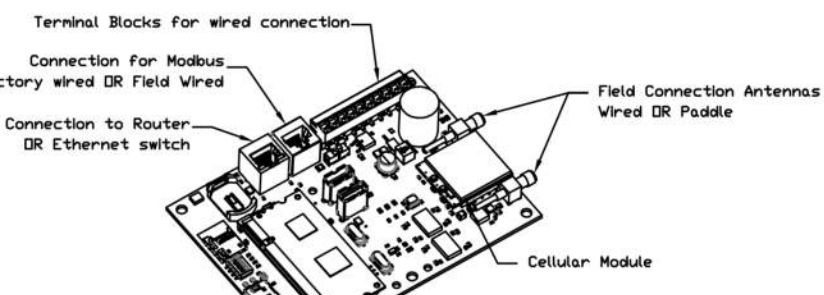
Description  
**CAPTIVEAIRE DRAWINGS**

Scale

**M803**

**ELECTRICAL PACKAGE**

NO	TAG	PACKAGE #	LOCATION	SWITCHES		OPTION	FANS CONTROLLED					
				LOCATION	QUANTITY		FAN TAG	TYPE	HP	VOLT	FLA	
1		SC-240110MA	WALL MOUNT IN SS BOX 18' x 18' x 6'	05 - SS WALL MOUNT BOX	1 LIGHT 1 FAN	SMART CONTROLS THERMOSTATIC CONTROL W/ RELAY ON/OFF WITH SUPPLY	KEF-1	EXHAUST	1	0.500	208	3.8
							KEF-2	EXHAUST	1	0.500	208	3.8
							KEF-3	EXHAUST	1	0.500	208	3.8
							KEF-4	EXHAUST	1	0.500	208	3.8

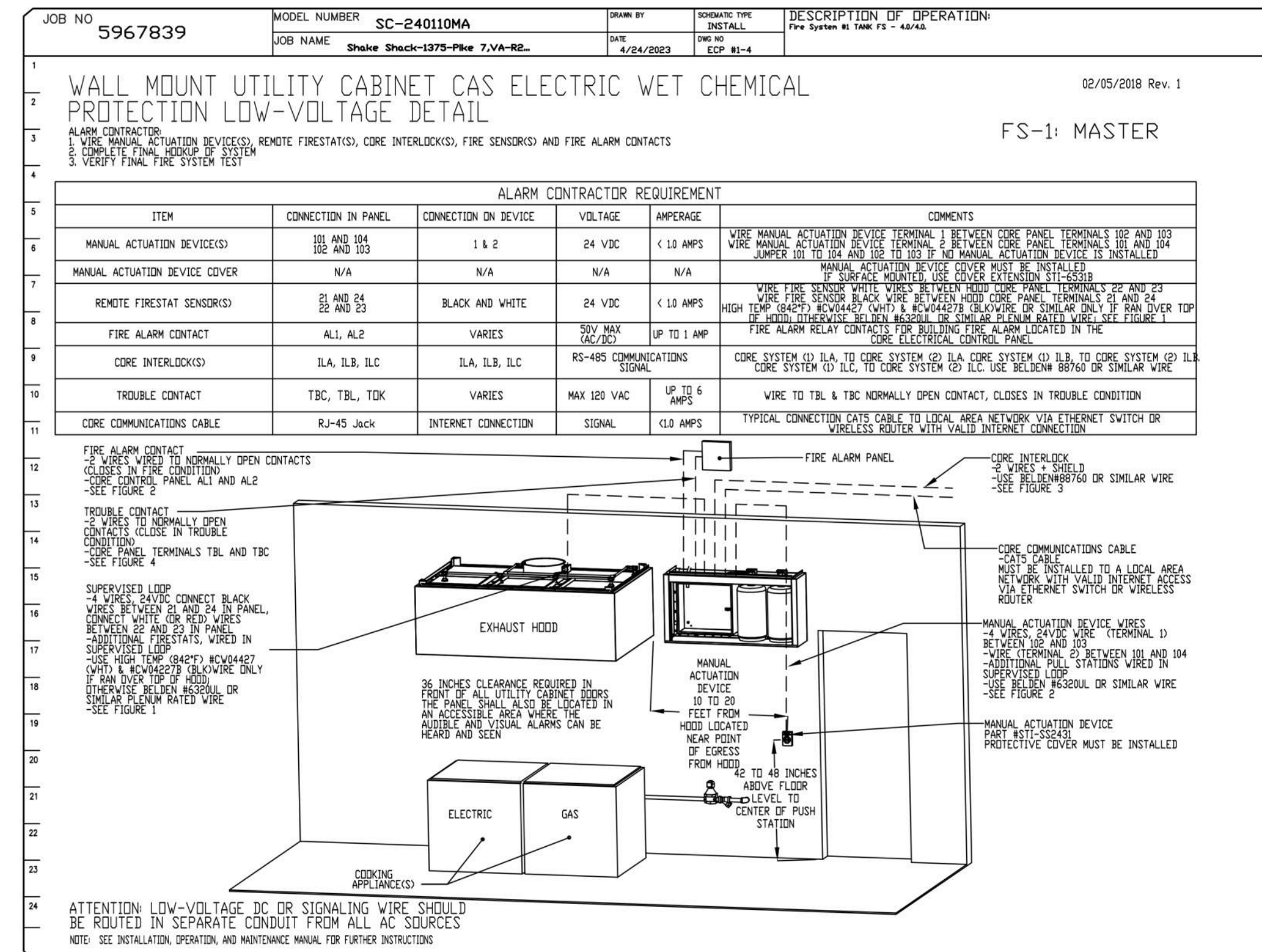
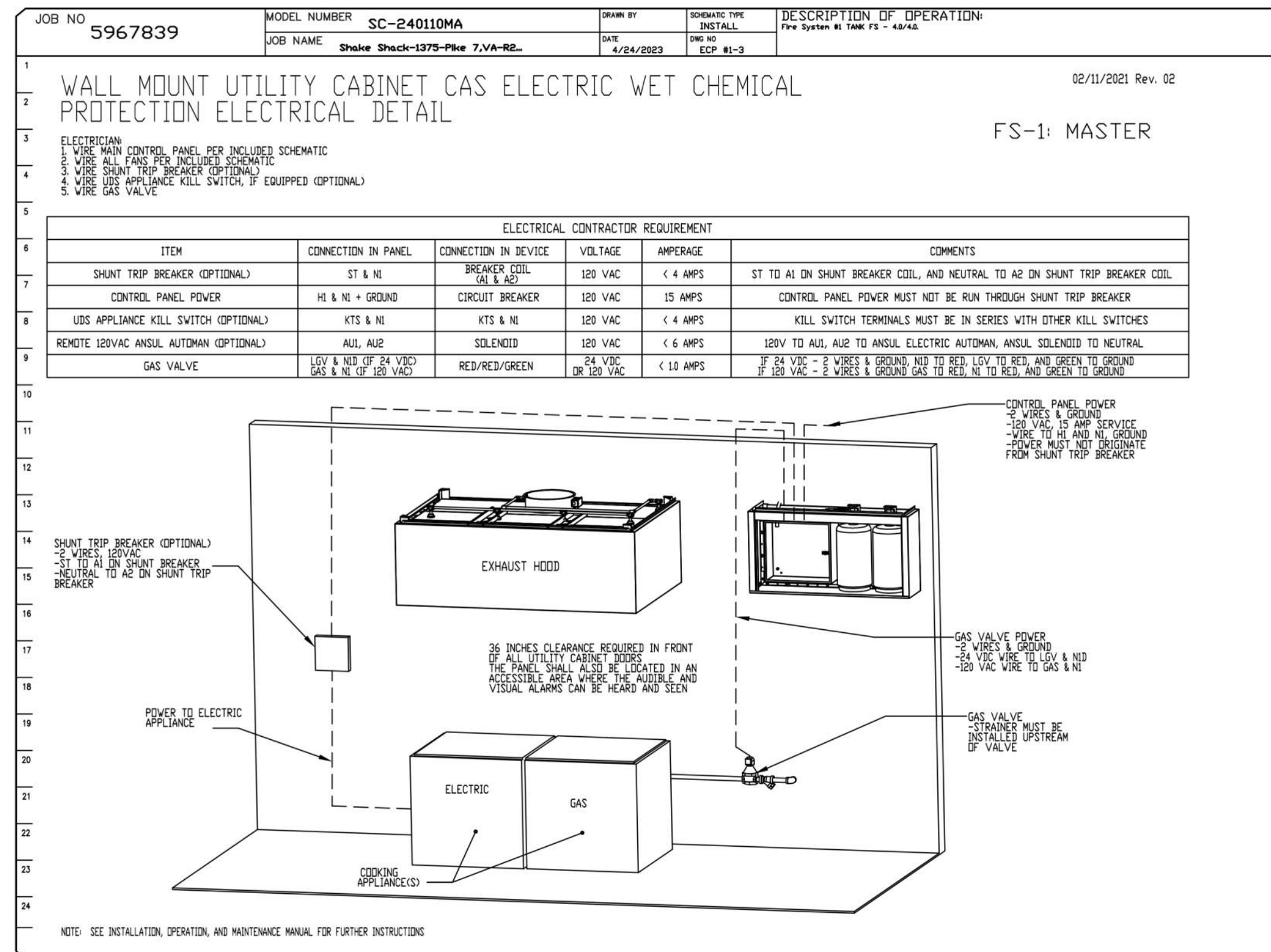
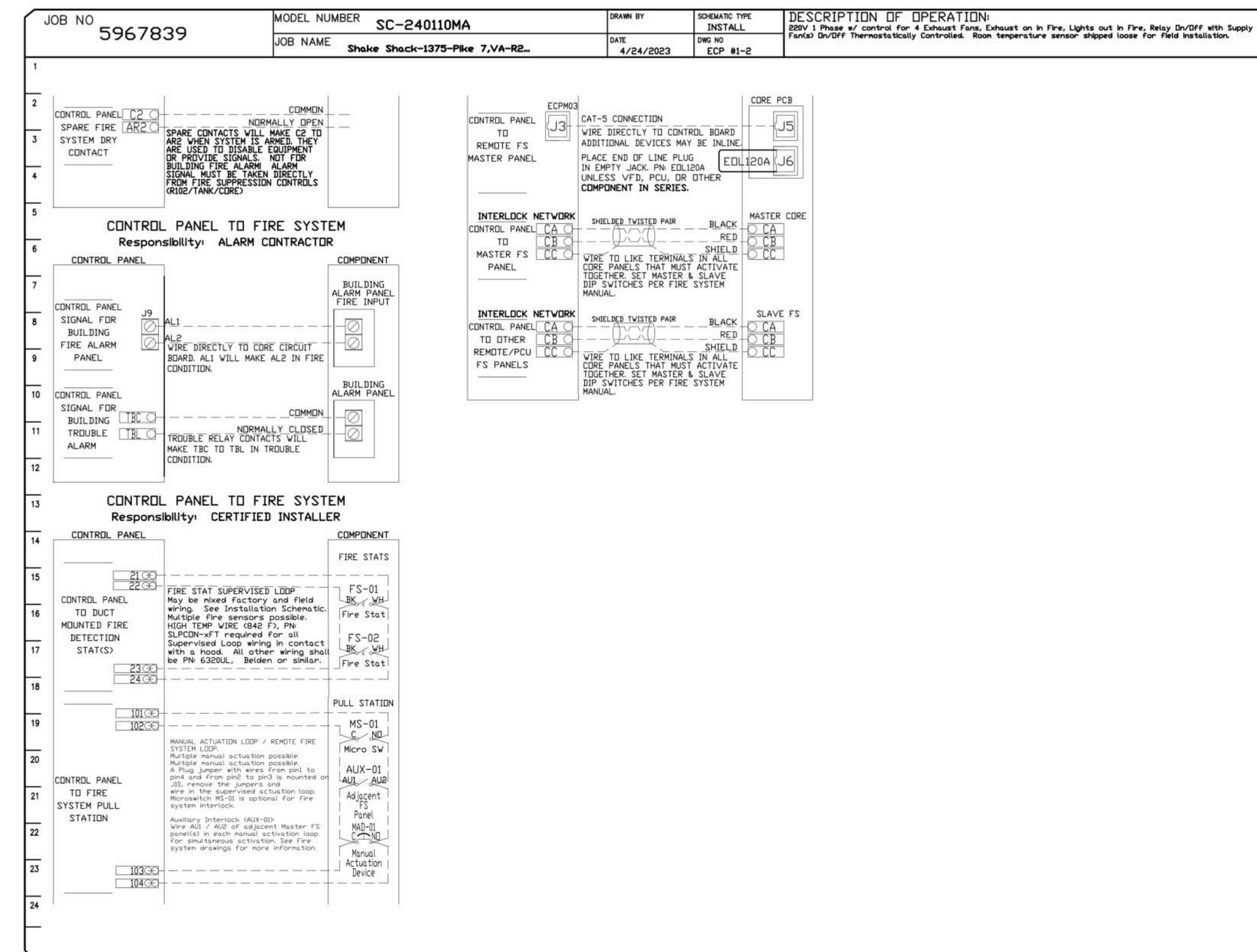
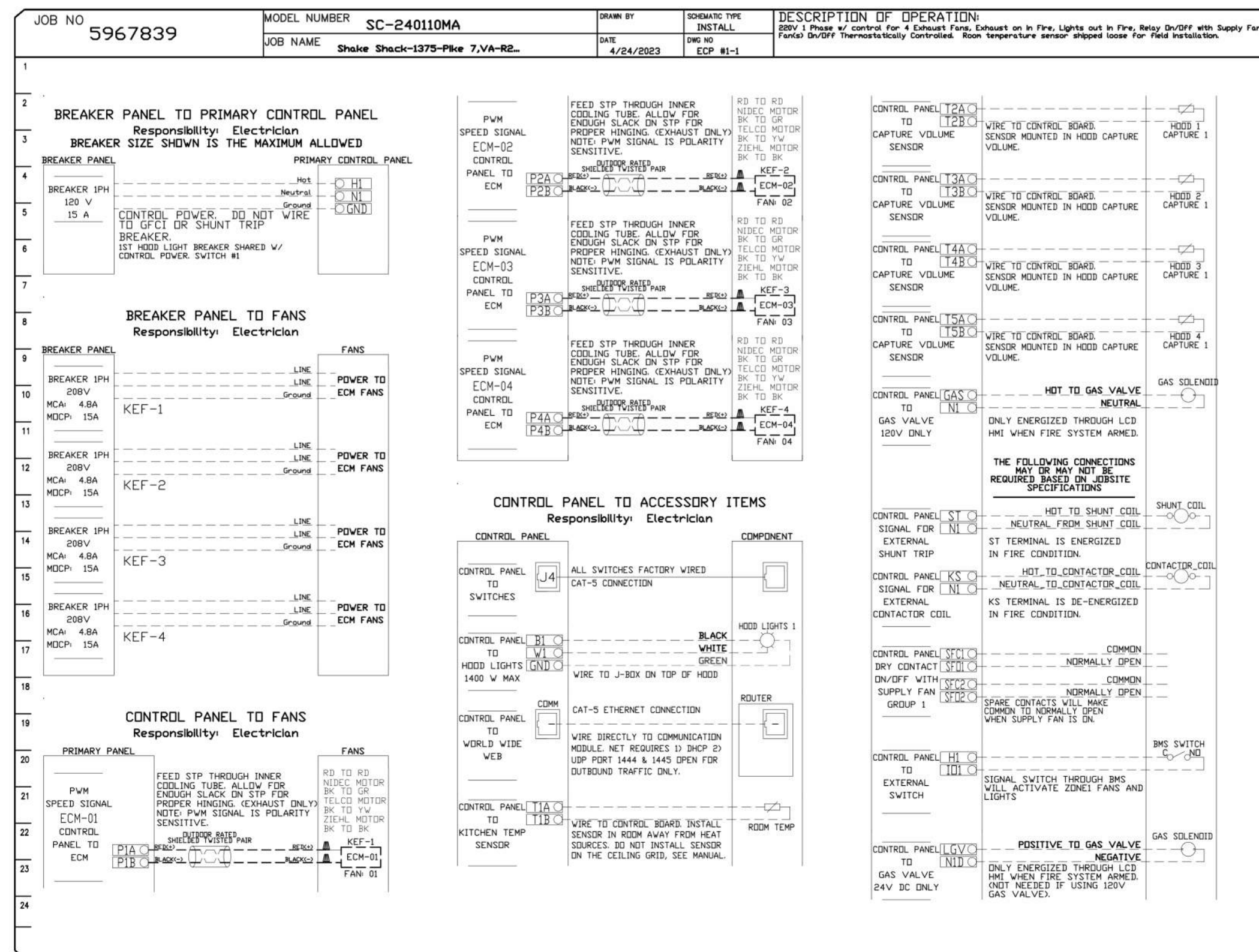


**CASink Monitor and Control**

— Head control panel to support communications to cloud-based Building Management System.  
— Head Control Panel to allow cloud-based Building Management System to monitor real time parameters outlined as MONITOR in the points list.  
— Head Control Panel to allow cloud-based Building Management System to control parameters outlined as CONTROL in the points list.  
— Head Control Panel to allow cloud-based Building Management System to implement SYSTEM ECONOMIZER control strategies for fully integrated Building Management.

**MONITORING AND CONTROL POINTS LIST**

IBT Package	Function	IBT Package	Function
Room Temperature	MONITOR	Room Temperature(s)	MONITOR
Duct Temperature(s)	MONITOR	Duct Temperature(s)	MONITOR
MTA Discharge Temperature	MONITOR	MTA Discharge Temperature	MONITOR
Minimum AHU Discharge Temperature	MONITOR	Minimum AHU Discharge Temperature	MONITOR
Fan Speed	MONITOR	Compressor Status	MONITOR
Fan Amperage	MONITOR	Fan Status	MONITOR
Fan Power	MONITOR	Fan Power	MONITOR
FFD Status	MONITOR	FFD Status	MONITOR
Compressor Status	MONITOR	Fan Filter Chip Percentage	MONITOR
Fan Status	MONITOR	Fan Condition	MONITOR
Fan Status	MONITOR	COOP Fan System	MONITOR
FFD Status	MONITOR	Building Presence	MONITOR
FFD Filter Chip Percentage	MONITOR	Light Buttons	MONITOR & CONTROL
Fan Condition	MONITOR	Light Buttons	MONITOR & CONTROL
COOP Fan System	MONITOR	Flush Buttons	MONITOR & CONTROL
Building Presence	MONITOR		
Fan Filter Status	MONITOR & CONTROL		
Fan Status	MONITOR & CONTROL		
Light Buttons	MONITOR & CONTROL		
Flush Buttons	MONITOR & CONTROL		



**REVISIONS**

NO.	DESCRIPTION	DATE

**CAPTIVE**

Eastern PA Mechanical

PO Box 2520, 1 Union Ave., Belle Cymrud, PA, 19004 PHONE: (267) 504-4126 EMAIL: eng108@captiveme.com

Shake Shack-1375-Pike 7, VA-R2(Kitchen)  
VIENNA, VA, 22182

**DATE:** 4/24/2023  
**DWG.#:** 5967839  
**DRAWN BY:** Joe.shilba  
**SCALE:** 3/4" = 1'-0"  
**MASTER DRAWING**

**SHEET NO.**  
4

**SHAKE SHACK**

VA - 1375 - PIKE 7  
8350 LEESBURG PIKE  
VIENNA, VA 22182

**Gensler**

2020 K STREET NW  
SUITE 200  
WASHINGTON, DC 20006  
UNITED STATES

SATELLITE OFFICE:  
400 N ASHLEY DRIVE  
SUITE C400  
TAMPA, FL 33602  
UNITED STATES

TEL 202.721.5200  
FAX 202.872.8587

TEL 813.204.9000  
FAX 813.223.6948

**kpff**

700 ENGINEER  
SUITE 2100  
750 FLOWER ST  
SUITE 2100  
LOS ANGELES, CA 90017  
TEL 213.418.0201

INFRASTRUCTURE  
**FACTOR**  
CONSULTING, INC.

MEP ENGINEER  
2361 ROSECRANS AVENUE  
SUITE 368  
EL SEGUNDO, CA 90245  
TEL 310.220.2745

**TriMark**  
Industrial Equipment, Supplies and Design

FOODSERVICE CONSULTANT  
505 COLLINS ST  
PO BOX 3905  
SOUTH ATTLEBORO  
MA 02703  
TEL 508.399.6000  
FAX 508.761.3620

Date	Description
05/16/2022	PERMIT AND BID
1 07/25/2022	ADDENDUM #1
2 09/02/2022	ADDENDUM #2
3 10/07/2022	ISSUE FOR BID
5 02/10/2023	BID SET
6 04/26/2023	SKETCH
F 06/27/2023	ISSUE FOR CONSTRUCTION

Seal / Signature

**OTTHON ESTRADA, JR.**  
Lic. No. 90779

05/16/2022

Project Name  
**PIKE 7**

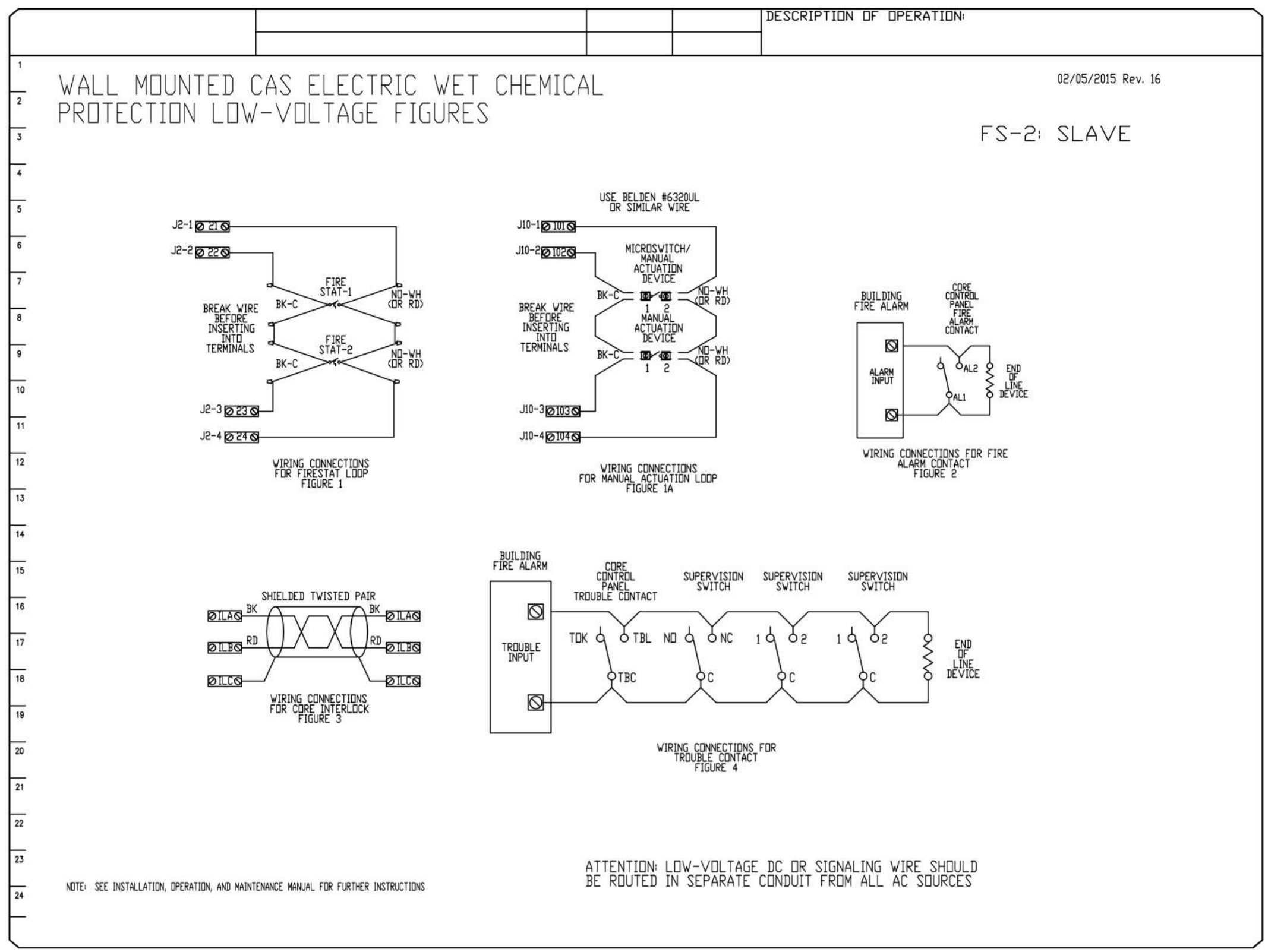
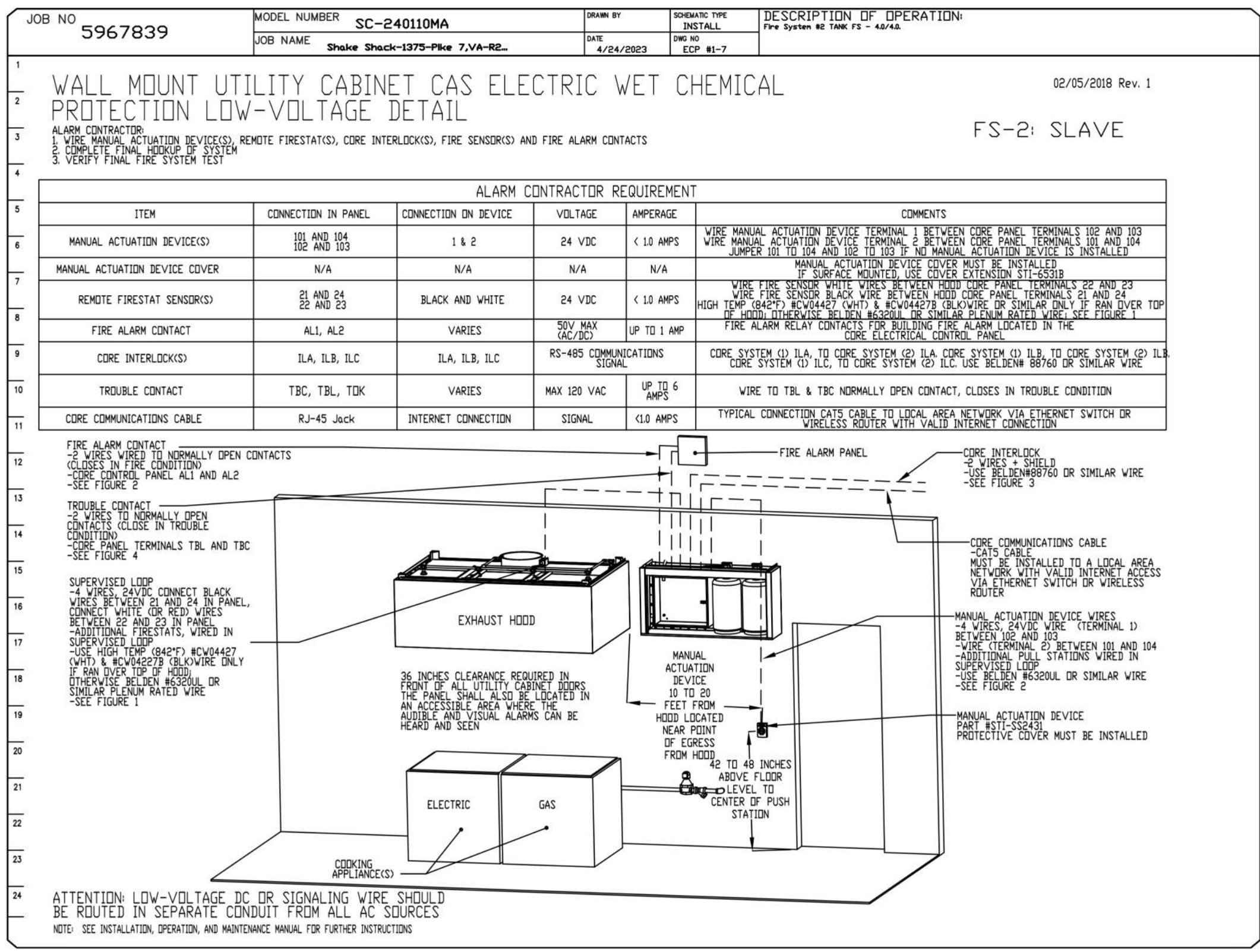
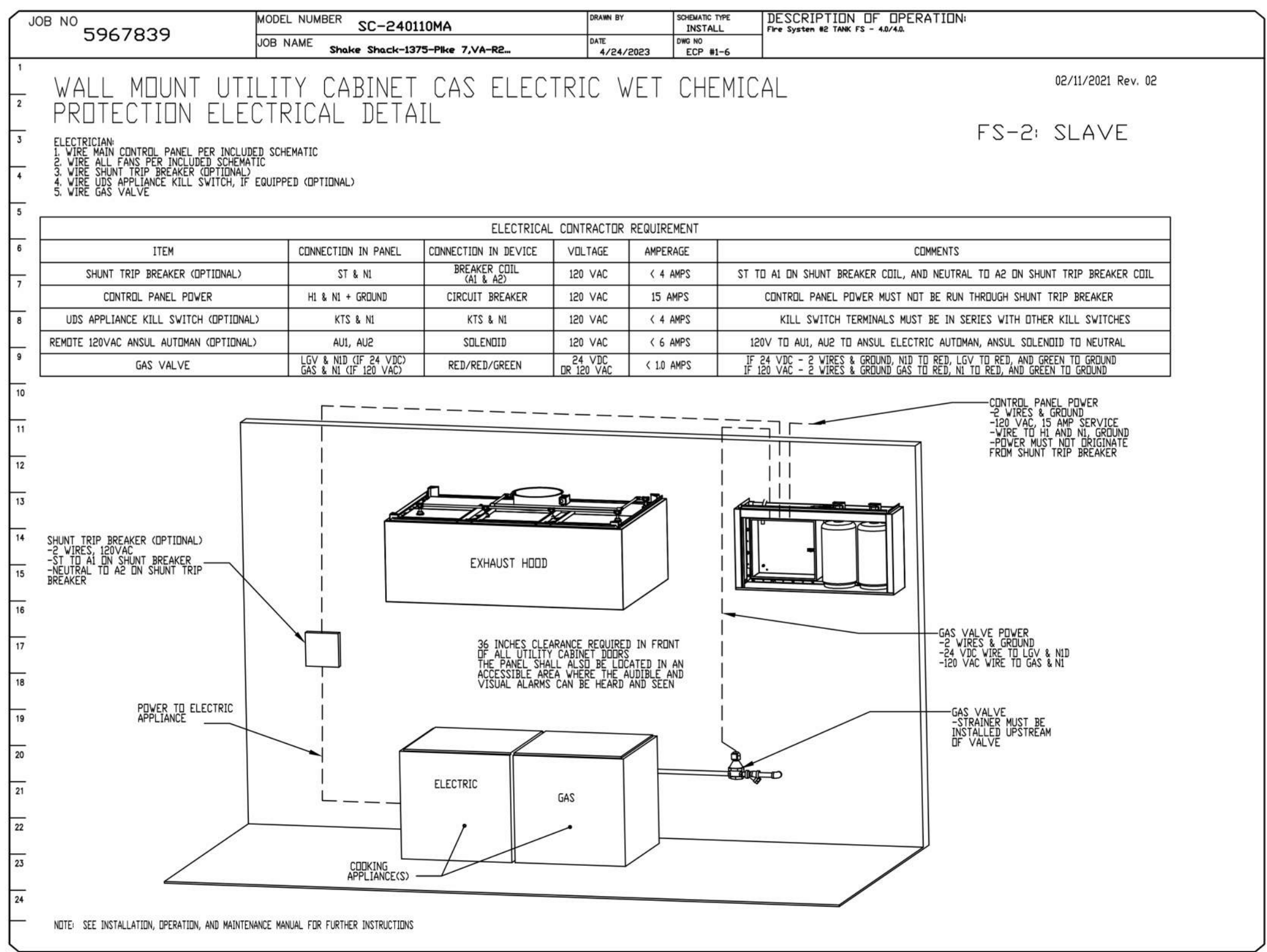
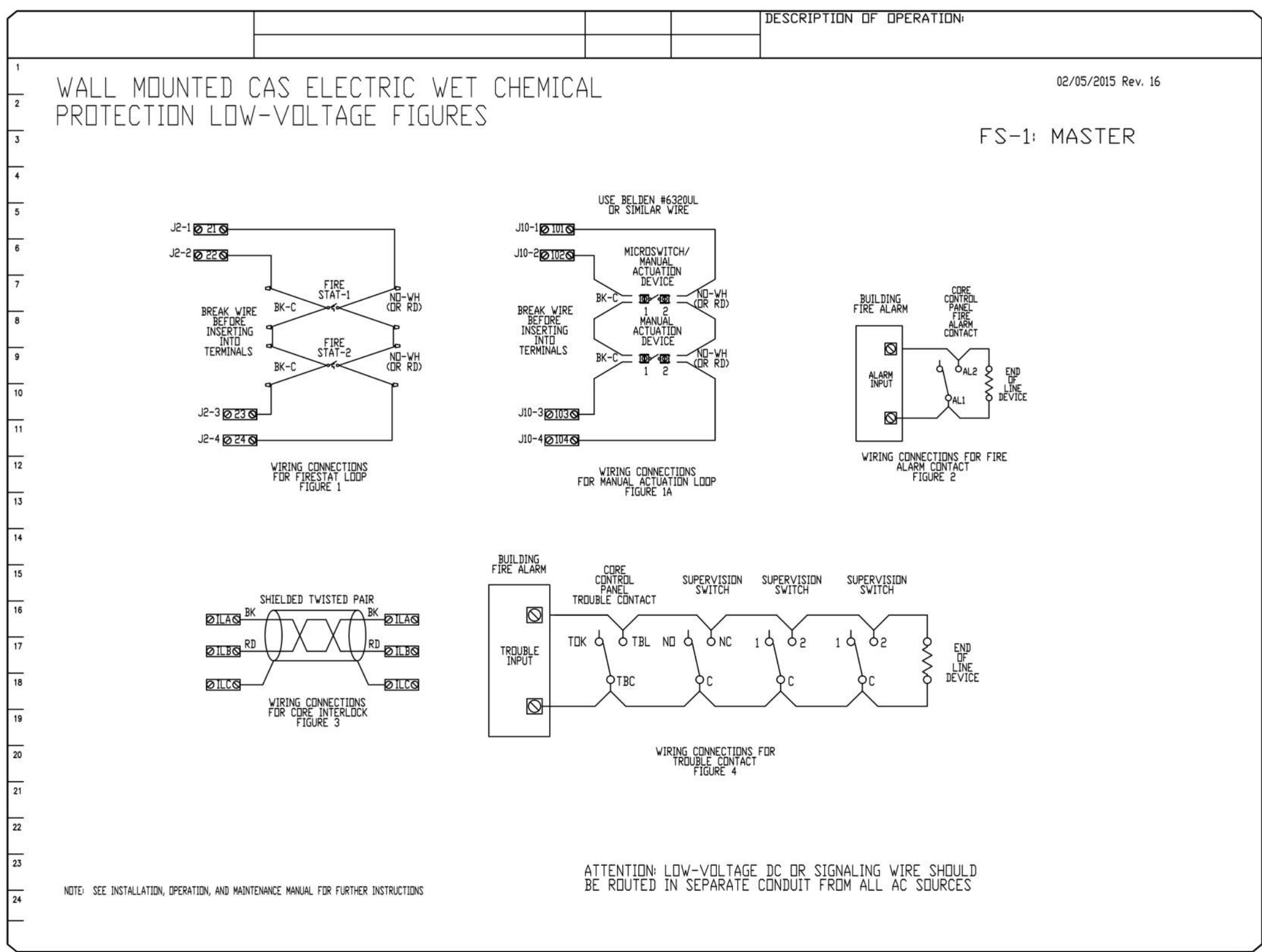
Project Number  
**069.6538.000**

Description  
**CAPTIVEAIRE DRAWINGS**

Scale

**M804**

© 2021 Gensler



**REVISIONS**

NO.	DESCRIPTION	DATE
1		
2		
3		
4		

**CAPTIVE**

Eastern PA Mechanical

www.captiveva.com

PO Box 2520, 1 Urban Ave, Belle Cymmyd, PA, 19304 PHONE: (267) 504-1426 EMAIL: mg106@captiveva.com

Snake Shack-1375-Pike 7, VA-R2(Kitchen)  
VIENNA, VA, 22182

**DATE:** 4/24/2023  
**DWG.#:** 5967839  
**DRAWN BY:** Joe.shilba  
**SCALE:** 3/4" = 1'-0"  
**MASTER DRAWING**

**SHEET NO.**  
5

**SHAKE SHACK**  
VA - 1375 - PIKE 7  
8350 LEESBURG PIKE  
VIENNA, VA 22182

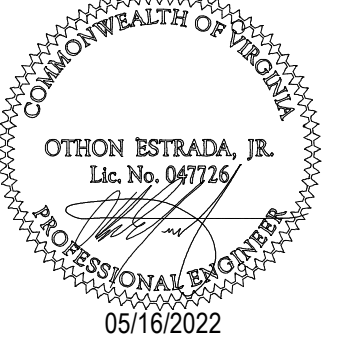
**Gensler**  
2020 K STREET NW  
SUITE 200  
WASHINGTON, DC 20006  
UNITED STATES  
SATELLITE OFFICE:  
400 N ASHLEY DRIVE  
SUITE C400  
TAMPA, FL 33602  
UNITED STATES  
TEL 202.721.5200  
FAX 202.872.8587  
TEL 813.204.9000  
FAX 813.223.6948

**kpff**  
ST ENGINEER  
700 S FLOWER ST  
SUITE 2100  
LOS ANGELES, CA 90017  
TEL 213.418.0201  
INFRASTRUCTURE  
**FACTOR**  
CONSULTING, INC.  
MEP ENGINEER  
2361 ROSECRANS AVENUE  
SUITE 368  
EL SEGUNDO, CA 90245  
TEL 310.220.2745

**TriMark**  
Foodservice Equipment, Supplies and Design  
FOODSERVICE CONSULTANT  
505 COLLINS ST  
PO BOX 3905  
SOUTH ATTLEBORO  
MA 02703  
TEL 508.399.6000  
FAX 508.761.3620

Date	Description
05/16/2022	PERMIT AND BID
1 07/25/2022	ADDENDUM #1
2 09/02/2022	ADDENDUM #2
3 10/07/2022	ISSUE FOR BID
5 02/10/2023	BID SET
6 04/26/2023	SKETCH
F 06/27/2023	ISSUE FOR CONSTRUCTION

Seal / Signature



Project Name  
**PIKE 7**

Project Number  
**069.6538.000**

Description  
**CAPTIVEAIRE DRAWINGS**

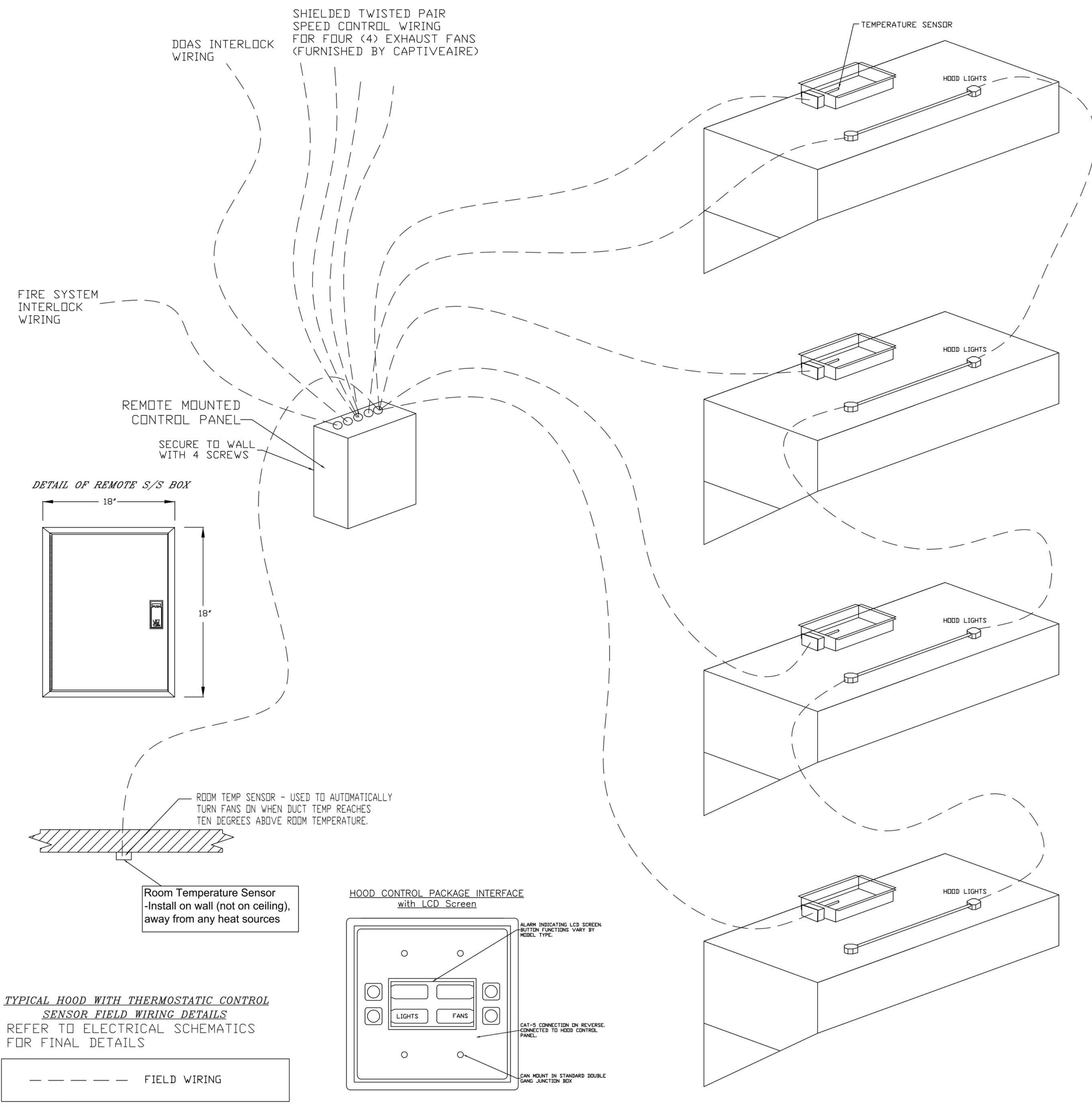
Scale

**M805**



# CRIMSON+ CONTROL DETAILS

## LOW VOLTAGE & INTERLOCKS (SEE SCHEMATICS FOR LINE VOLTAGE)



**SC- Specification:**

The Electrical Package, typically FP, is designed to thermostatically activate the exhaust fans for an exhaust hood whenever elevated temperatures are sensed in the exhaust system. This option will meet the requirements of IMC 507.2.1.1 by providing a thermostat(s) mounted in the duct or hood riser to sense increased exhaust temperatures. Controls shall be listed by ETL (UL 508A). The control enclosure shall be NEMA 1 rated and listed for installation inside of the exhaust hood utility cabinet. The control enclosure may be constructed of stainless steel or painted steel.

Temperature probes(s) located in the duct riser shall be constructed of Stainless Steel. A room temperature sensor is also provided for field installation in the kitchen space in order to start the fan(s) based on the temperature differential between the room and the exhaust air in the duct, rather than fixed set-points. The system is factory pre-set to activate the fans at 10 deg F° above the room temperature.

Once the duct temperature reaches the activation point, the exhaust fans will be activated. The controls also provide hysteresis to prevent cycling of the fans after the cooking appliances have been turned off and the heat in the exhaust system is reduced. The hysteresis is factory set 2 degrees and will keep the exhaust running until the temperature falls 2 degrees below the activation set point. A hysteresis timer also exists to keep the fans running for at least 30 min after being activated by the temperature rise.

The activation and hysteresis settings may be field adjusted on the board LCD interface located inside the control enclosure to meet application needs. The panel is factory configured to shut down supply fans, turn on the exhaust fans and turn off the hood lights in a fire condition.

REVISIONS	
DESCRIPTION	DATE

**CAPTIVEAIRE**  
www.captiveaire.com  
Eastern PA Mechanical  
PO Box 2520, 1 Union Ave, Bellefonte, PA 16804 PHONE: (814) 504-1126 EMAIL: reg108@captiveaire.com

Shake Shack-1375-Pike 7, VA-R2(Kitchen)  
VIENNA, VA, 22182

DATE: 4/24/2023  
DWG.#: 5967839  
DRAWN BY: Joe.shilba  
SCALE: 3/4" = 1'-0"  
MASTER DRAWING

CUSTOMER APPROVAL TO MANUFACTURE:

Approved as Noted   
Approved with NO Exception Taken   
Revise and Resubmit   
SIGNATURE \_\_\_\_\_ DATE \_\_\_\_\_  
Your Title \_\_\_\_\_ Date \_\_\_\_\_

**SHEET NO.**  
7

**SHAKE SHACK**  
VA - 1375 - PIKE 7  
8350 LEESBURG PIKE  
VIENNA, VA 22182

**Gensler**  
2020 K STREET NW  
SUITE 200  
WASHINGTON, DC 20006  
UNITED STATES  
TEL 202.721.5200  
FAX 202.872.8587

SATELLITE OFFICE:  
400 N ASHLEY DRIVE  
SUITE C400  
TAMPA, FL 33602  
UNITED STATES  
TEL 813.204.9000  
FAX 813.223.6948

**kpff**  
ST ENGINEER  
700 S FLOWER ST  
SUITE 2100  
LOS ANGELES, CA 90017  
TEL 213.418.0201

INFRASTRUCTURE  
**FACTOR**  
CONSULTING, INC.

MEP ENGINEER  
2361 ROSECRANS AVENUE  
SUITE 368  
EL SEGUNDO, CA 90245  
TEL 310.220.2745

**TriMark**  
Foodservice Equipment, Supplies and Design  
FOODSERVICE CONSULTANT  
505 COLLINS ST  
PO BOX 3905  
SOUTH ATTLEBORO  
MA 02703  
TEL 508.399.6000  
FAX 508.761.3620

Date	Description
05/16/2022	PERMIT AND BID
07/25/2022	ADDENDUM #1
09/02/2022	ADDENDUM #2
10/07/2022	ISSUE FOR BID
02/10/2023	BID SET
04/26/2023	SKETCH
06/27/2023	ISSUE FOR CONSTRUCTION

Seal / Signature

Project Name  
**PIKE 7**

Project Number  
**069.6538.000**

Description  
CAPTIVEAIRE DRAWINGS

Scale

**M807**

