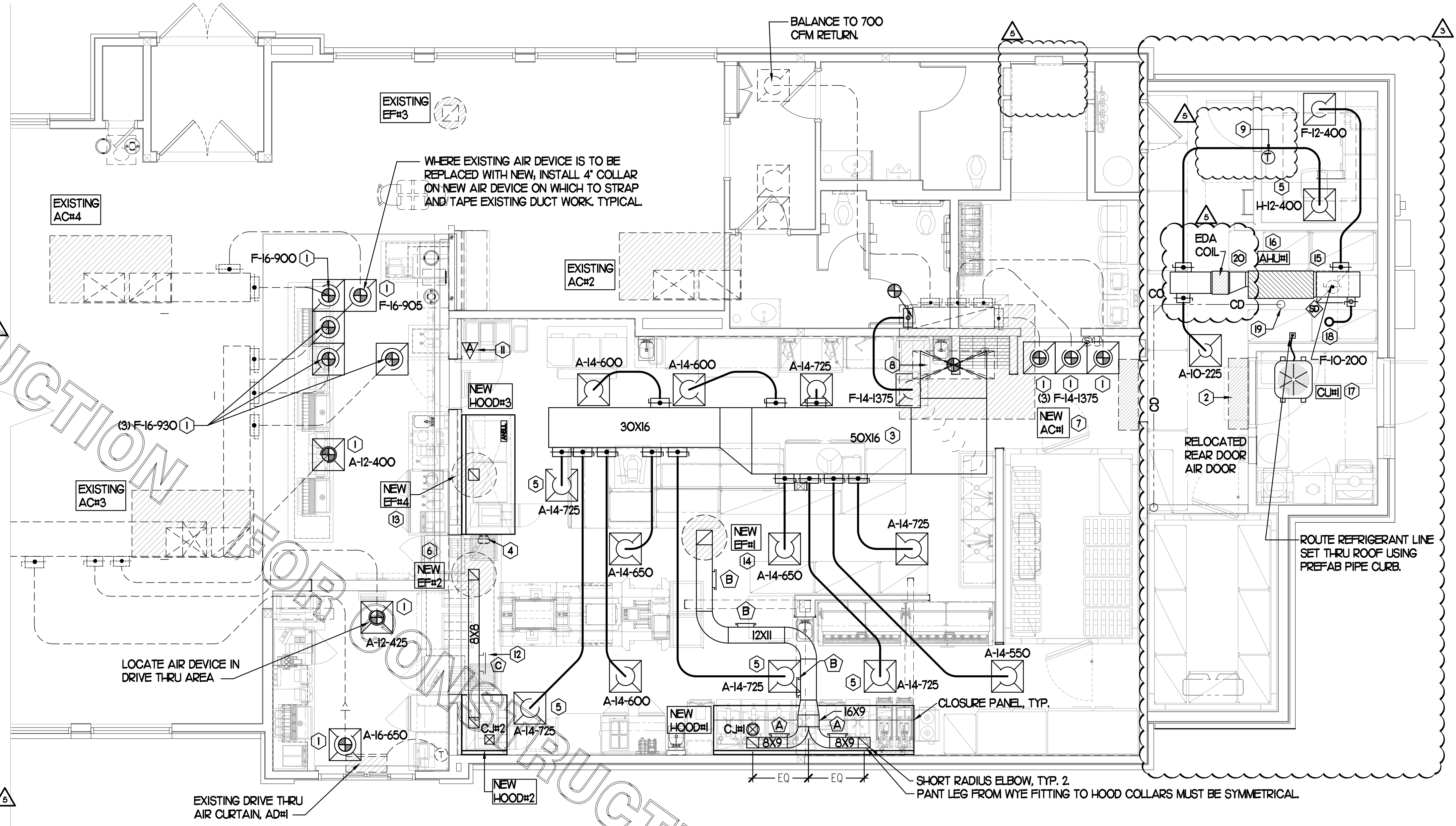


**KEY NOTES (THIS SHEET ONLY)**

- 1 CONNECT NEW DIFFUSER TO EXISTING TAKE-OFF. IF NECESSARY, MECHANICAL CONTRACTOR SHALL PROVIDE AND INSTALL NEW DUCT IN ORDER TO MAKE CONNECTION TO DIFFUSER IN NEW LOCATION. ANY FLEX DUCT USED SHALL NOT BE LONGER THAN 4'-0". SEE DETAIL 1/M3.
- 2 RELOCATE EXISTING AIR CURTAIN TO NEW LOCATION SHOWN ON PLAN. MOUNT OVER DOOR HEADER 7'-2" AFF TO BOTTOM OF UNIT. LOCATE MAGNETIC CONTACT TYPE MICROSWITCH IN DOOR FRAME ON STRIKE SIDE.
- 3 BRANCH TAKE-OFFS SHALL NOT BE LOCATED CLOSER THAN 3'-0" FROM ANY ELBOW INCLUDING THE SUPPLY AIR DROP FROM CURB.
- 4 C-#3 MOUNTED INSIDE CABINETS SERVING SCJ PLENUM, SEE DETAIL 2/M2-1.
- 5 MECHANICAL CONTRACTOR TO ADJUST PATTERN DEFLECTORS TO THROW STRAIGHT DOWN.
- 6 LOCATE A MINIMUM OF 10 FT FROM PARAPETS. SEE DETAIL 3/M3-1 FOR ORIENTATION OF HINGE SIDE OF FAN ON CURB.
- 7 INSTALL NEW AC#1 ONTO EXISTING ROOF CURB. RE-CONNECT EXISTING CONTROLS, GAS, AND CONDENSATE TO NEW ROOFTOP UNIT. VERIFY EXISTING CONTROLS ARE IN GOOD, WORKING CONDITION. IF NOT, CONTACT CHICK-FIL-A CONSTRUCTION MANAGER.
- 8 TRANSITION IN VERTICAL DROP FROM FULL SIZE OF UNIT OPENING TO SIZE SHOWN. TRANSITION WITHIN CURB WHERE REQUIRED TO AVOID STRUCTURE. PROVIDE TURNING VANES IN ELBOW.
- 9 CONTACT SUNCOAST ENVIRONMENTAL CONTROLS AT 1-727-544-6679 TO PURCHASE A VENSTAR T2700 THERMOSTAT WITH AN ADDED ACCO430 HUMIDITY CONTROL MODULE. MOUNT THERMOSTAT AT 5'-0" AFF. SEE FIELD WIRING DIAGRAM ON SHEET M4.1.
- 10 NOT USED.
- 11 MOUNT SMOKE DETECTOR ANNUNCIATOR FOR AHU#1 ON KITCHEN WALL WITH EXISTING ANNUNCIATORS.
- 12 GREASE ACCESS DOOR. SEE GREASE ACCESS DOOR SCHEDULE ON SHEET M1.2 FOR SIZING AND CONSTRUCTION. TYPICAL.
- 13 GREASE DUCT FULL SIZE UP FROM HOOD COLLAR. OFFSET IN RISE AS NECESSARY TO ROUTE THRU EXISTING ROOF OPENING TO NEW EXHAUST FAN. PROVIDE AND INSTALL NEW ROOF CURB FOR EXHAUST FAN.
- 14 ROUTE GREASE DUCT UP THRU EXISTING ROOF OPENING TO NEW EF#1.
- 15 SUPPLY AND RETURN PLENUMS SHALL BE FULL SIZE OF AHU#1 CONNECTIONS.
- 16 LOCATE AHU#1 ABOVE CEILING. POSITION UNIT TO ALLOW FOR BOTTOM TAKE-OFF TO RETURN AIR GRILLE. SEE DETAIL 5/M3.1 FOR SUSPENSION REQUIREMENTS. ROUTE REFRIGERANT PIPING ABOVE CEILING AND UP THRU ROOF TO CU#1.
- 17 SET CU#1 ON ROOF USING TWO CURBS PLUS CPES-1 EQUIPMENT CURBS. SECURE CU#1 TO CURBS ARRANGED IN PARALLEL. SET LONG SIDE OF CURB PARALLEL TO ROOF SLOPE. FLASH INTO ROOF BY GC. FINAL LOCATION TO BE DETERMINED IN THE FIELD. ALL MAINTENANCE CLEARANCES OF NEW AND EXISTING EQUIPMENT SHALL BE MAINTAINED.
- 18 6" DIA DUCT UP THRU ROOF TO TERMINATE AT LOREN COOK MODEL PR-8 GRAVITY VENTILATOR. PROVIDE AND INSTALL WITH FACTORY ROOF CURB AND BIRD SCREEN. BALANCE TO 25 CFM OUTSIDE AIR. CURB SHALL HAVE MINIMUM 2'-0" CLEARANCE TO ALL PARAPET WALLS AND OTHER EQUIPMENT. MAINTAIN MINIMUM 10'-0" CLEARANCE TO ANY EXHAUST OR PLUMBING VENT.
- 19 ROUTE 3/4" TYPE K COPPER CONDENSATE DRAIN FROM AIR HANDLING UNIT TO TERMINATE INDIRECTLY 0'-2" ABOVE FUNNEL DRAIN LOCATED AT COOLER. INSULATE WITH 1/2" ARMAFLEX.
- 20 TRANSITION FROM FULL SIZE OF SUPPLY PLENUM TO EDA COIL INLET. SUPPLY PLENUM FROM EDA COIL OUTLET SHALL BE FULL SIZE.



**SHEET NOTES**

- 1 DUCT SIZES SERVING DIFFUSERS AND GRILLES ARE SAME SIZE AS DIFFUSER OR GRILLE NECK UNLESS NOTED OTHERWISE.
- 2 REFER TO ELEVATIONS ON M2.1 AND HOOD DETAILS ON M4.1 FOR CAPTURE-JET FANS DUCTING REQUIREMENTS.
- 3 HARDPIPE SHALL BE USED FOR ALL TAKE-OFFS EXCEPT WHERE ALLOWED BY DETAIL 1/M3.1. USE OF FLEXIBLE DUCT SHALL BE LIMITED TO THOSE SITUATIONS WHERE NO OTHER MEANS TO ACCOMPLISH ROUTING IS POSSIBLE.
- 4 COORDINATE NEW WORK WITH EXISTING CONDUITS, STRUCTURE AND PIPING. FIELD VERIFY EXISTING CONDITIONS PRIOR TO COMMENCING WORK. CONTRACTOR TO NOTIFY DESIGN TEAM WITHOUT DELAY IF ACTUAL LOCATION OF EXISTING MECHANICAL EQUIPMENT DOES NOT MATCH FLOOR PLAN.
- 5 MECHANICAL CONTRACTOR SHALL BALANCE HVAC SYSTEM AS SHOWN ON THIS PLAN & IN SCHEDULES ON SHEET M3.1. IF AIRFLOWS DIFFER BY MORE THAN 5%, CONTACT CFA CONSTRUCTION MANAGER. TEST AND BALANCE REPORT SHALL BE DONE PRIOR TO STORE TURNOVER AND SUBMITTED TO CFA'S CONSTRUCTION MANAGER.
- 6 MOUNT ALL NEW AND RELOCATED REMOTE WALK-IN COOLER AND FREEZER CONDENSERS & ICE MACHINE CONDENSERS ON NEW AVCOA ALUMINUM STANDS. REFER TO PLUMBING SHEETS.

TOTAL AIR BALANCE SCHEDULE											
EQUIPMENT MARK	AC#1 (NEW)	AC#2 (EXISTING)	AC#3 (EXISTING)	AC#4 (EXISTING)	AC#5 (EXISTING)	AHU#1 (NEW)	EF#1 (NEW)	EF#2 (NEW)	EF#3 (EXISTING)	EF#4 (NEW)	TOTAL
SERVES	KITCHEN	DINING 'A'	DINING 'B'	DINING 'B'	PLAY AREA	ADDITION	HOOD#1	HOOD#2	RR	HOOD#3	
SUPPLY AIR CFM	8,000	2,830	4,000	2,765	1,800	625					+20,020
RETURN AIR CFM	6,200	2,080	3,000	2,165	1,500	600					+15,545
OUTSIDE AIR CFM	1,800	750	1,000	600	300	25					+4,475
EXHAUST CFM							1,700	701	400	804	-3,605
PRESSURIZATION											+870
REMARKS	ADJUST AND VERIFY BALANCE OF ALL HVAC EQUIPMENT IS AS SHOWN IN ORDER TO MAINTAIN BUILDING AIR BALANCE.										

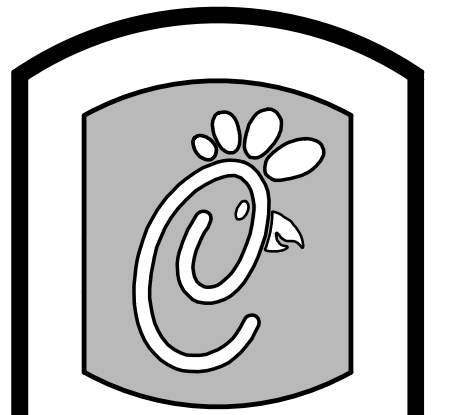
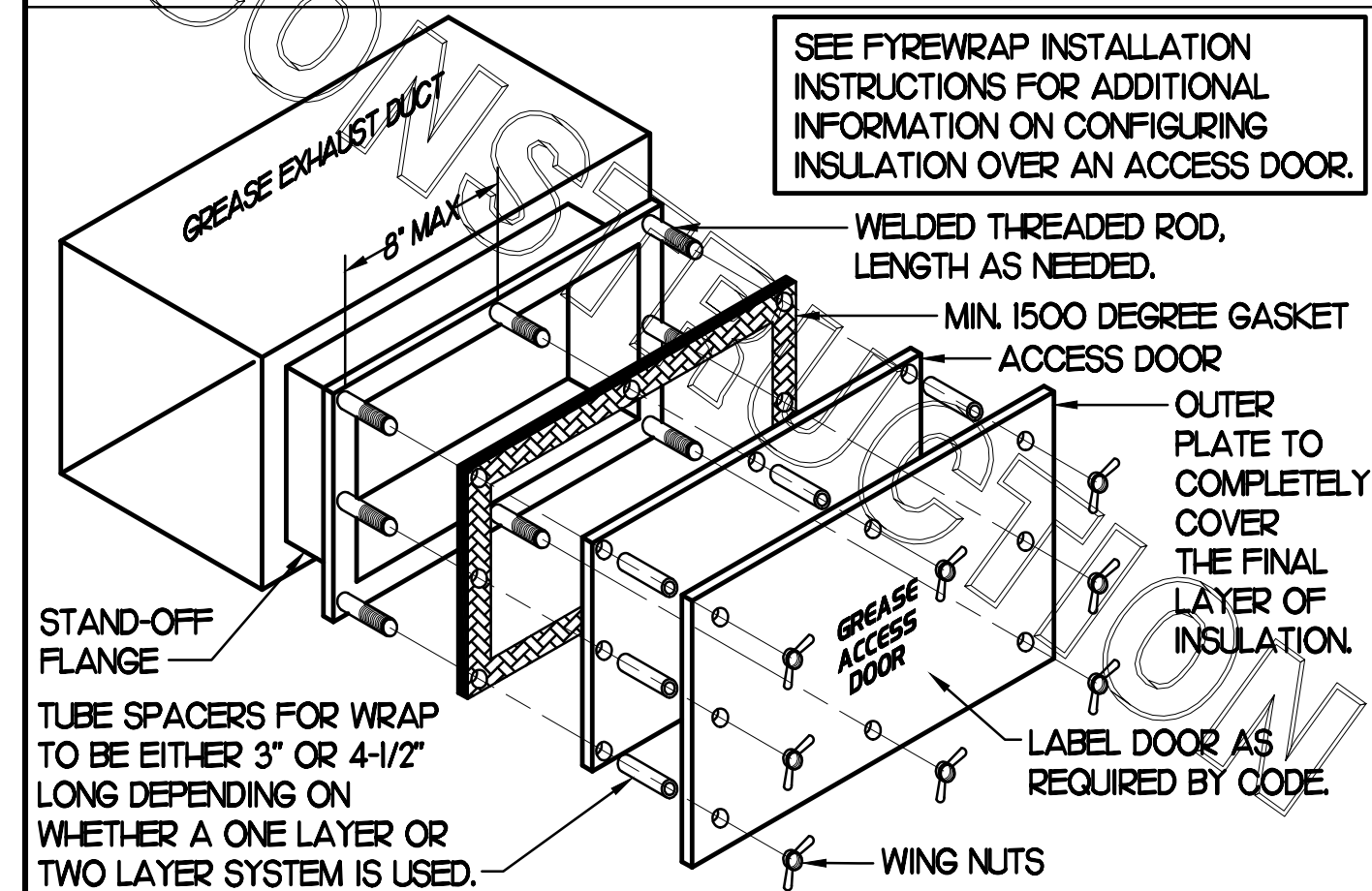
**I MECHANICAL FLOOR PLAN**  
SCALE: 1/4"=1'-0"

LEGEND			
A-12-400	TYPE - NECK SIZE - CFM		KEY NOTE REFERENCE
	SPIN-IN FITTING, MVD, NO SCOOP		EXISTING START COLLAR
	SPIN-IN HARD φ FLEXIBLE φ DIFFUSER		EXISTING RUNNOUT TO REMAIN
	REMOTE TEMPERATURE SENSOR		EXISTING RETURN/EXHAUST (TYP.)
	REMOTE HUMIDITY SENSOR		EXISTING SUPPLY DIFFUSER (TYP.)
	SMOKE DETECTOR		EXISTING DUCT (TYP.)
	GREASE ACCESS DOOR TYPE		NEW RETURN/EXHAUST, UNO. (TYP.)
	POINT OF CONNECTION TO EXISTING		NEW SUPPLY DIFFUSER, UNO. (TYP.)
	DIRECTION OF THROW		NEW DUCT (TYP.)
	SMOKE DETECTOR ANNUNCIATOR		MANUAL VOLUME DAMPER
			CONDENSATE PIPING

**GREASE ACCESS DOOR SCHEDULE**

MARK	OPENING SIZE	DOOR SIZE	REMARKS
A	6.5H X 12W	8.5H X 14W	I
B	8.5H X 14W	10.5H X 16W	I
C	5.5H X 14W	7.5H X 16W	I

ACCESS DOORS SHALL BE UL 1978 LISTED OR FIELD FABRICATED, REQUIRE NO TOOLS FOR REMOVAL AND MEET THE REQUIREMENTS OF THE CURRENT EDITION OF THE IMC. ACCESS DOOR ASSEMBLY SHALL BE WELDED IN PLACE TO THE GREASE EXHAUST DUCT AND THE ACCESS DOOR SHALL BE SECURED WITH THUMB SCREWS. ACCESS DOORS SHALL BE SEALED WITH A MINIMUM 1500 DEGREE GASKET MATERIAL EQUIVALENT TO THAT MANUFACTURED BY BRETON INDUSTRIES, INC (800) 382-2491.



**Chick-fil-A**

5200 Buffington Rd.  
Atlanta Georgia,  
30349-2998

Revisions:  
Mark Date By

3 03/17/17  
ADDITION

LAYOUT MOD.

5 06/12/17  
ELECTRICAL & PLUMBING REVISIONS

Mark Date By

5 06/12/17  
ELECTRICAL & PLUMBING REVISIONS

Mark Date By

5 06/12/17  
ELECTRICAL & PLUMBING REVISIONS



**Kurtzyske & Associates**  
CONSULTING ENGINEERS  
2900 Lebanon Pike, Ste 201  
Nashville, Tennessee 37214  
Telephone: (615) 255-5203  
Fax: (615) 255-5207  
Email: mail@kurtzyske.com

STORE  
CFA #2240  
Mercury Boulevard FSU  
110 Market Place Dr.  
Hampton, VA 23666

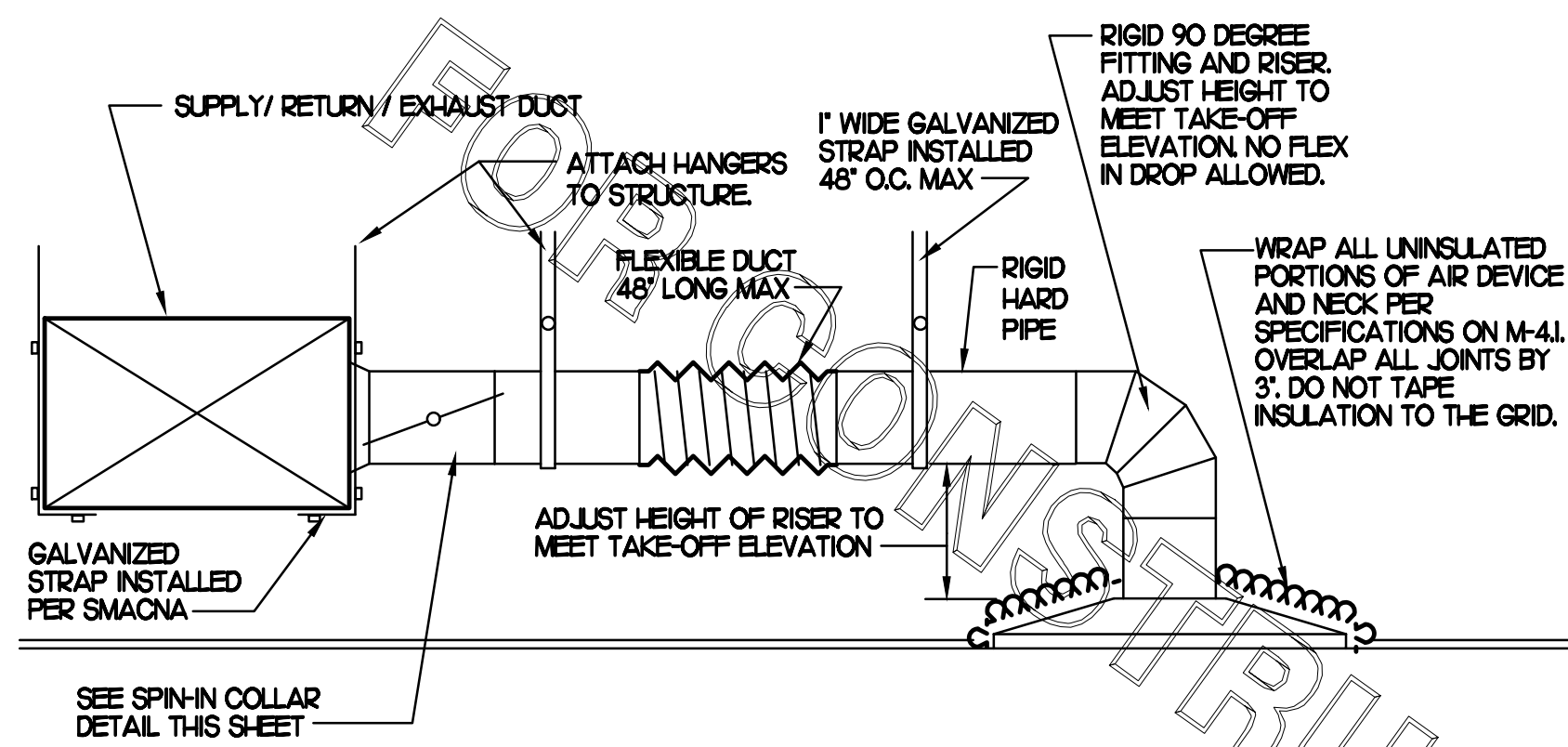
SHEET TITLE  
MECHANICAL  
FLOOR PLAN

PROTOTYPE S06C-R

Job No. :1615Z.HFR  
Store :2240  
Date: 02.14.17  
Drawn By : AK  
Checked By: MK

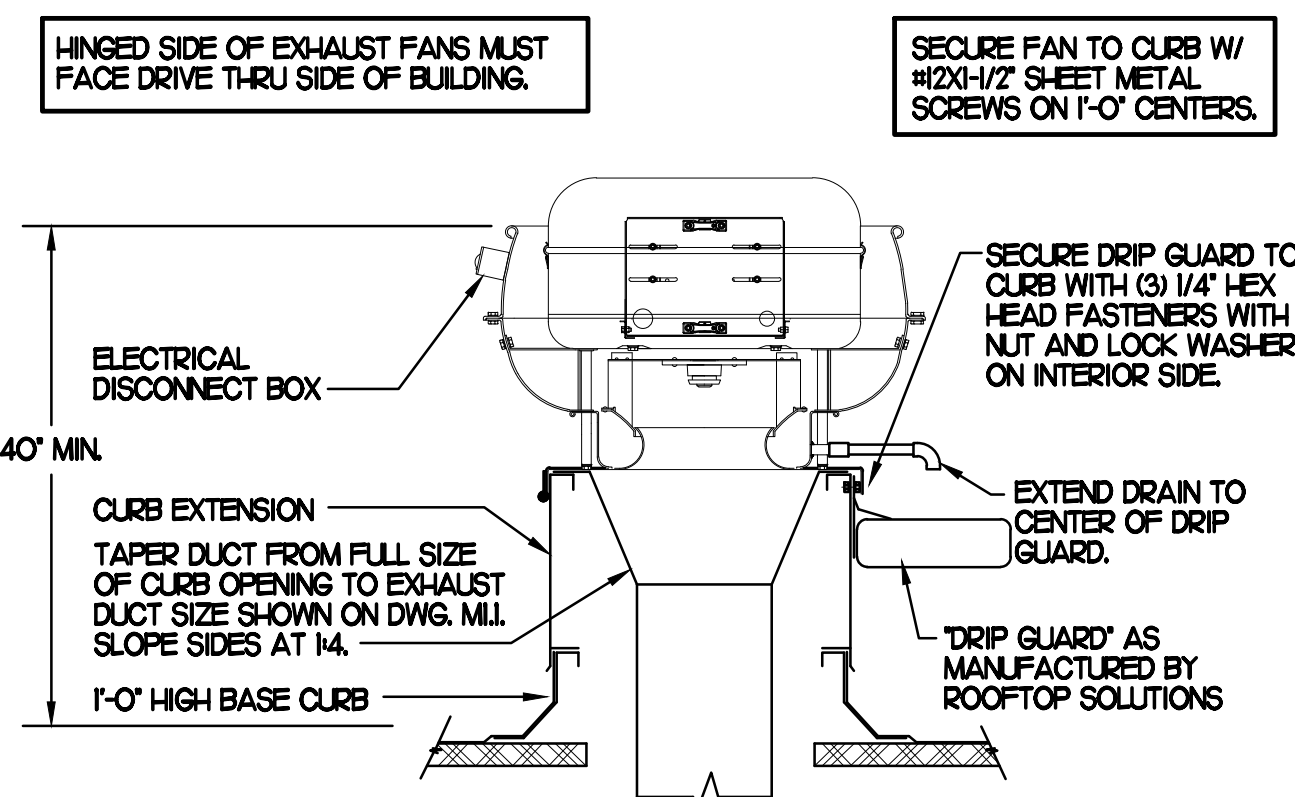
Sheet

**MI**



### 1 SAG/RAG/GRILLE TAKE-OFF

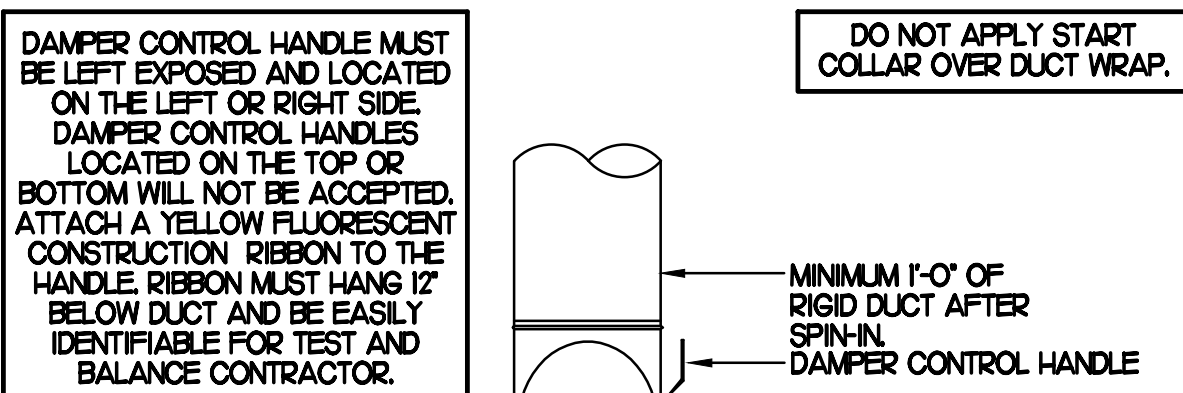
NO SCALE



### 3 KITCHEN HOOD EXHAUST FAN

NO SCALE

CHICK-FIL-A HAS A NATIONAL ACCOUNT WITH TOM BARROW COMPANY FOR THE ROYAL METAL START COLLARS. THE MECHANICAL CONTRACTOR IS REQUIRED TO PURCHASE THE ROYAL METAL START COLLARS DIRECTLY FROM TOM BARROW COMPANY. CONTACT MR. SCOTT GEORGE AT 404-351-0100 FOR PRICING AND AVAILABILITY. ROYAL METAL START COLLARS NOT PURCHASED THRU TOM BARROW COMPANY WILL NOT BE ACCEPTED.

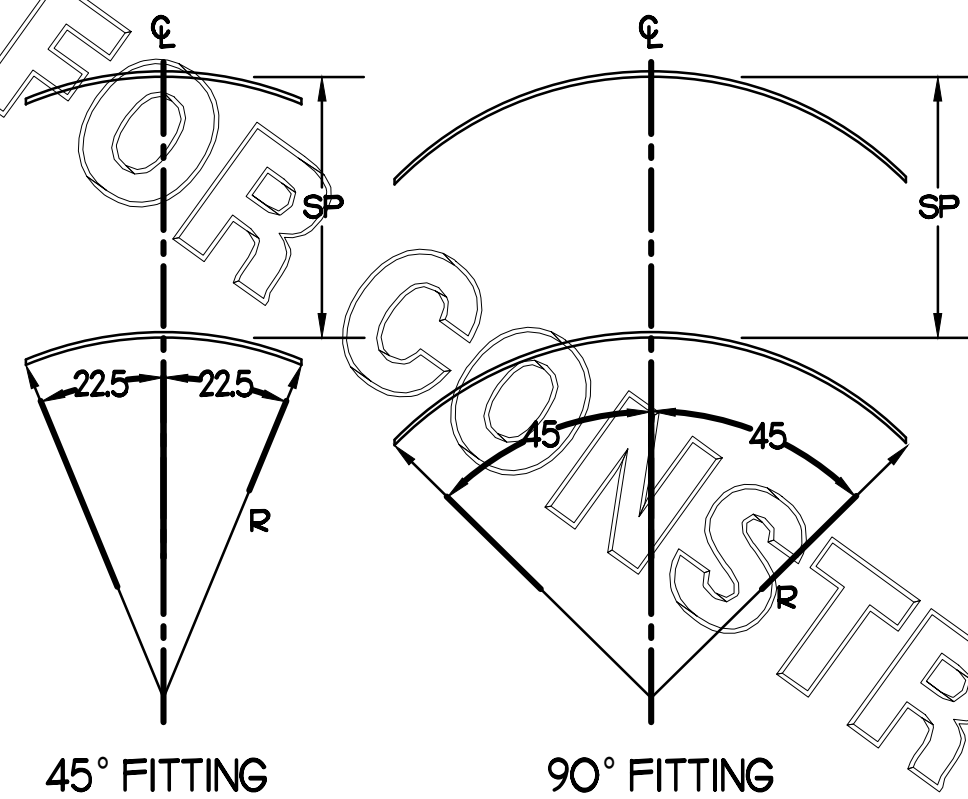


### 2 START COLLAR

NO SCALE

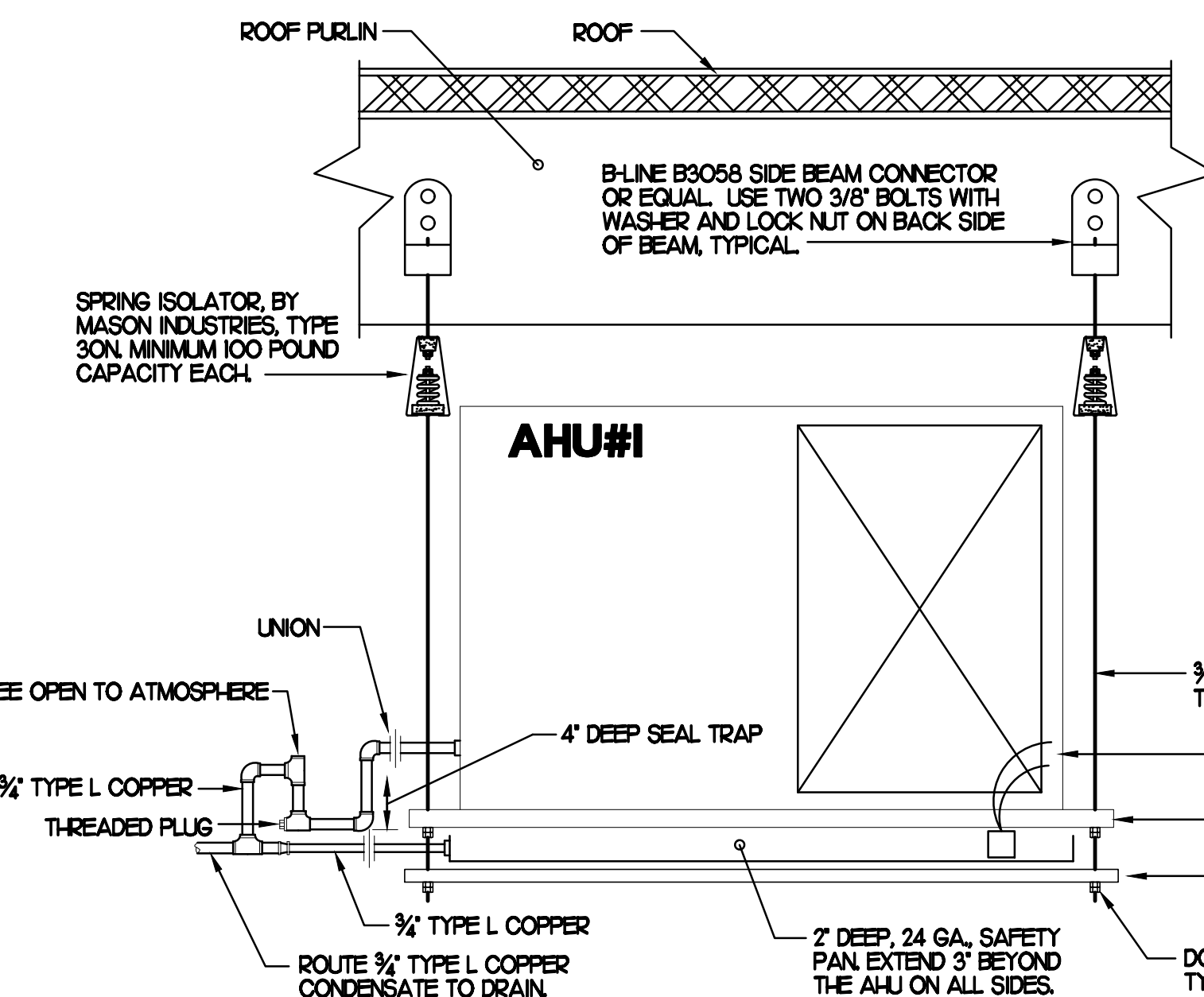
R	SP	GA
2	15	24

- NO TRAILING EDGE.
- SINGLE THICKNESS CONSTRUCTION.



### 4 TURNING VANES

NO SCALE



### 5 AHU#1 INSTALLATION DETAIL

NO SCALE

#### AHU INSTALLATION NOTES

- SUPPORT AHU FROM STRUCTURE WITH 3/8\"/>

#### AIR DEVICE SCHEDULE

MARK	DESCRIPTION	LOCATION	NECK SIZE	FACE SIZE	FRAME TYPE	REMARKS
A	PRICE MODEL APDC ALUMINUM SUPPLY AIR DIFFUSER WITH INDIVIDUALLY ADJUSTABLE CURVED AIR PATTERN CONTROLLERS.	KITCHEN/ADDITION SERVING	SEE PLAN	24X24	LAY-IN	I2
F	PRICE MODEL 80 EGGRATE RETURN AIR GRILLE WITH REMOVABLE WHITE CORE, FACTORY FLAT BLACK BACKPAN AND ROUND NECK.	OFFICE/ADDITION KITCHEN/SERVING	SEE PLAN	24X24	LAY-IN	I2
H	PRICE MODEL APDC ALUMINUM SUPPLY AIR DIFFUSER WITH INDIVIDUALLY ADJUSTABLE CURVED AIR PATTERN CONTROLLERS.	OFFICE	I2	24X24	LAY-IN	I23
NOTES	<ul style="list-style-type: none"> <li>MECHANICAL CONTRACTOR SHALL PURCHASE THE AIR DEVICES DIRECTLY FROM TOM BARROW COMPANY. CONTACT MR. SCOTT GEORGE AT 404-351-0100 FOR PRICING AND AVAILABILITY. AIR DEVICES NOT PURCHASED THRU TOM BARROW COMPANY WILL NOT BE ACCEPTED.</li> </ul>					
REMARKS	<ol style="list-style-type: none"> <li>STANDARD OFF WHITE FINISH.</li> <li>FACTORY INSULATED R-6 BACKPAN.</li> <li>PROVIDE MODEL VCR7 NECK DAMPER, ADJUSTABLE THRU DIFFUSER FACE.</li> </ol>					

#### SPLIT SYSTEM HEAT PUMP UNIT SCHEDULE

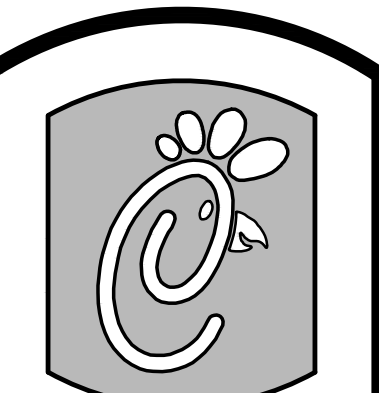
MARK	COOLING CAPACITY (MBH)	HEATING CAPACITY (MBH)	FAN SECTION (CFM)	R-410A MODEL	MANUFACTURER	REMARKS					
TOTAL	SEER	47 DEG. F.	17 DEG. F.	HSPF	SUPPLY	O.A.	I.P.	ESP	AHU/CU		
AHU1/CUH (NEW)	25.2	16.0	2.8	13.7	9.0	625	25	1/2	50	CBXZLH-024/14-PX-024	LENNOX (H2)
NOTES	<ul style="list-style-type: none"> <li>COOLING CAPACITIES ARE GROSS, BASED ON INDOOR 75°FDB/63°FWB, OUTDOOR 95°FDB, AT AIR CONDITION OF 400 CFM/TON.</li> <li>CHICK-FIL-A MAINTAINS A NATIONAL ACCOUNT FOR EQUIPMENT WITH LENNOX CORPORATION. CONTACT LENNOX NATIONAL ACCOUNTS AT 972-497-6260 (OR BY FAX AT 972-497-5112) FOR PRICING, ORDERING AND AVAILABILITY.</li> </ul>										
REMARKS	<ol style="list-style-type: none"> <li>CABINET CONFIGURED FOR LEFT HAND HORIZONTAL DISCHARGE.</li> <li>FIELD PROVIDED AND INSTALLED RETURN SIDE SMOKE DETECTOR.</li> <li>PROVIDE FIELD INSTALLED NON-FUSED DISCONNECT AT AHU1 AND CUH1.</li> <li>PROVIDE COIL HALL GUARD.</li> <li>REFRIGERANT PIPING AS PER MANUFACTURER'S RECOMMENDATIONS.</li> <li>PROVIDE ENGRAVED PLASTIC LABEL AT CUH1 AND AHU1 WITH HIGH WHITE LETTERS ON A BLACK BACKGROUND RIVETED TO UNIT CABINET.</li> <li>FACTORY INSTALLED CRANKCASE HEATERS.</li> <li>FACTORY INSTALLED LOW AMBIENT CONTROLS FOR OPERATION DOWN TO 30 DEGREES F.</li> <li>PROVIDE FACTORY 6 KW AUXILIARY ELECTRIC HEAT.</li> <li>VERIFY ELECTRICAL CHARACTERISTICS WITH ELECTRICAL PLANS PRIOR TO ORDERING EQUIPMENT.</li> <li>PROVIDE SINGLE POINT POWER SOURCE.</li> <li>FACTORY PROVIDED, FIELD INSTALLED EDA-024B ENHANCED DEHUMIDIFICATION ACCESSORY.</li> </ol>										

#### EXHAUST FAN SCHEDULE

MARK	CFM	ESP	RPM	TIP SPEED (FPM)	HP (WATTS)	AREA SERVED	MODEL	MANUFACTURER	REMARKS
EF#1 (NEW)	1,700	0.75	1,267	5,473	1/2	HOOD#1	I65 VCR4P	LOREN COOK	I6
EF#2 (NEW)	701	0.75	1,236	4,861	1/3	HOOD#2	I50 VCR4P	LOREN COOK	I6
EF#3 (EXISTING)	400	-	-	-	-	RESTROOMS	EXISTING	-	-
EF#4 (NEW)	804	0.75	1,295	5,085	1/3	HOOD#3	I50 VCR4P	LOREN COOK	I6
NOTES	<ul style="list-style-type: none"> <li>GREASE EXHAUST FAN RPM BASED ON 80 DEGREE F AIR AT 1000 FEET ABOVE SEA LEVEL.</li> <li>GREASE EXHAUST FANS TO BE UL 762 LISTED.</li> <li>CHICK-FIL-A HAS A NATIONAL ACCOUNT WITH TOM BARROW COMPANY FOR FAN/CURB PACKAGE. MECHANICAL CONTRACTOR IS REQUIRED TO PURCHASE THE FAN/CURB PACKAGE DIRECTLY FROM TOM BARROW COMPANY. CONTACT MR. SCOTT GEORGE AT 404-351-0100 FOR PRICING AND AVAILABILITY. FANS AND CURBS NOT PURCHASED THRU TOM BARROW COMPANY WILL NOT BE ACCEPTED.</li> </ul>								
REMARKS	<ol style="list-style-type: none"> <li>PROVIDE FACTORY 1\"/&gt; </li> </ol>								

#### GAS FIRED ROOFTOP UNIT SCHEDULE

MARK	COOLING CAPACITY (MBH)	HEATING CAPACITY (MBH)	FAN SECTION (CFM)	ELECTRICAL DATA	MODEL	MFGR	REMARKS								
TOTAL	SENS	SEER/EER	INPUT	OUTPUT	SUPPLY	O.A.	I.P.	ESP	MCA	MOCP	VOLTAGE				
AC#1 (NEW)	259.8	12.3	10.5 EER	480.0	384.0	8,000	1,800	7.5	1.0	128.0	150	208/3/60	LG1300S4B	LENNOX	I9
AC#2 (EXISTING)	-	-	-	-	2,830	750	-	-	-	-	-	-	LG1024ZB	LENNOX	-
AC#3 (EXISTING)	-	-	-	-	4,000	1,000	-	-	-	-	-	-	LG1020ZB	LENNOX	-
AC#4 (EXISTING)	-	-	-	-	2,765	600	-	-	-	-	-	-	LG1090ZB	LENNOX	-
AC#5 (EXISTING)	-	-	-	-	1,800	300	-	-	-	-	-	-	LG1060ZB	LENNOX	-
NOTES	<ul style="list-style-type: none"> <li>COOLING CAPACITIES ARE GROSS, BASED ON INDOOR ED# 80F, INDOOR EWB# 67F, OUTDOOR ED# 95F.</li> <li>CHICK-FIL-A MAINTAINS A NATIONAL ACCOUNT FOR EQUIPMENT WITH LENNOX CORPORATION. CONTACT LENNOX NATIONAL ACCOUNTS AT 972-497-6260 (OR BY FAX AT 972-497-5112) FOR PRICING, ORDERING AND AVAILABILITY.</li> <li>MECHANICAL CONTRACTOR TO VERIFY LENNOX SUBMITTAL WITH CONSTRUCTION DOCUMENTS.</li> <li>FOR PROPER BUILDING AIR BALANCE, VERIFY AMOUNT OF OUTSIDE AIR PROVIDED BY ALL EXISTING UNITS. ADJUST AS PER SCHEDULE WHERE NECESSARY.</li> <li>VERIFY MIN. 10' DISTANCE OF O.A. INTAKE OPENINGS OF A/C UNITS FROM ANY EXISTING SOURCE OF AIR POLLUTION (EXHAUST FAN, COMBUSTION FLUE, VENT, ETC). IF SUCH CONDITIONS EXIST, CONTRACTOR IS REQUIRED TO DUCT OUTSIDE AIR INTAKE ON ROOF AWAY FROM ANY SUCH SOURCE.</li> </ul>														
REMARKS	<ol style="list-style-type: none"> <li>PROVIDE DIFFERENTIAL ENTHALPY ECONOMIZER WITH POWER EXHAUST. PROVIDE WITH TITLE 24 ECONOMIZERS.</li> <li>PROVIDE FACTORY INSTALLED AND UNIT POWERED 115V GFI SERVICE OUTLET.</li> <li>PROVIDE FACTORY INSTALLED RETURN SIDE SMOKE DETECTOR.</li> <li>PROVIDE FACTORY INSTALLED, PRE-WIRED, NEMA 3 NON-FUSED DISCONNECT.</li> <li>PROVIDE 2\"/&gt; </li> </ol>														



Chick-fil-A

5200 Buffington Rd.  
Atlanta Georgia,  
30349-2998

Revisions:  
Mark Date By

△

Mark Date By

△

Mark Date By

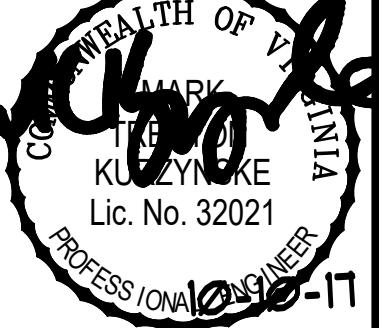
△

Mark Date By

△ 5 06/12/17

ELECTRICAL &

PLUMBING REVISIONS



Kurtzyske & Associates  
CONSULTING ENGINEERS  
2900 Lebanon Pike, Ste 201  
Nashville, Tennessee 37214  
Telephone: (615) 255-5203  
Fax: (615) 255-5207  
Email: mail@kurtzyske.com

STORE  
CFA #2240  
Mercury Boulevard FSU  
110 Market Place Dr.  
Hampton, VA 23666

SHEET TITLE  
HVAC DETAILS  
& SCHEDULES

PROTOTYPE S06C-R

Job No. :16157.HFR

Store :2240

Date: 02.14.17

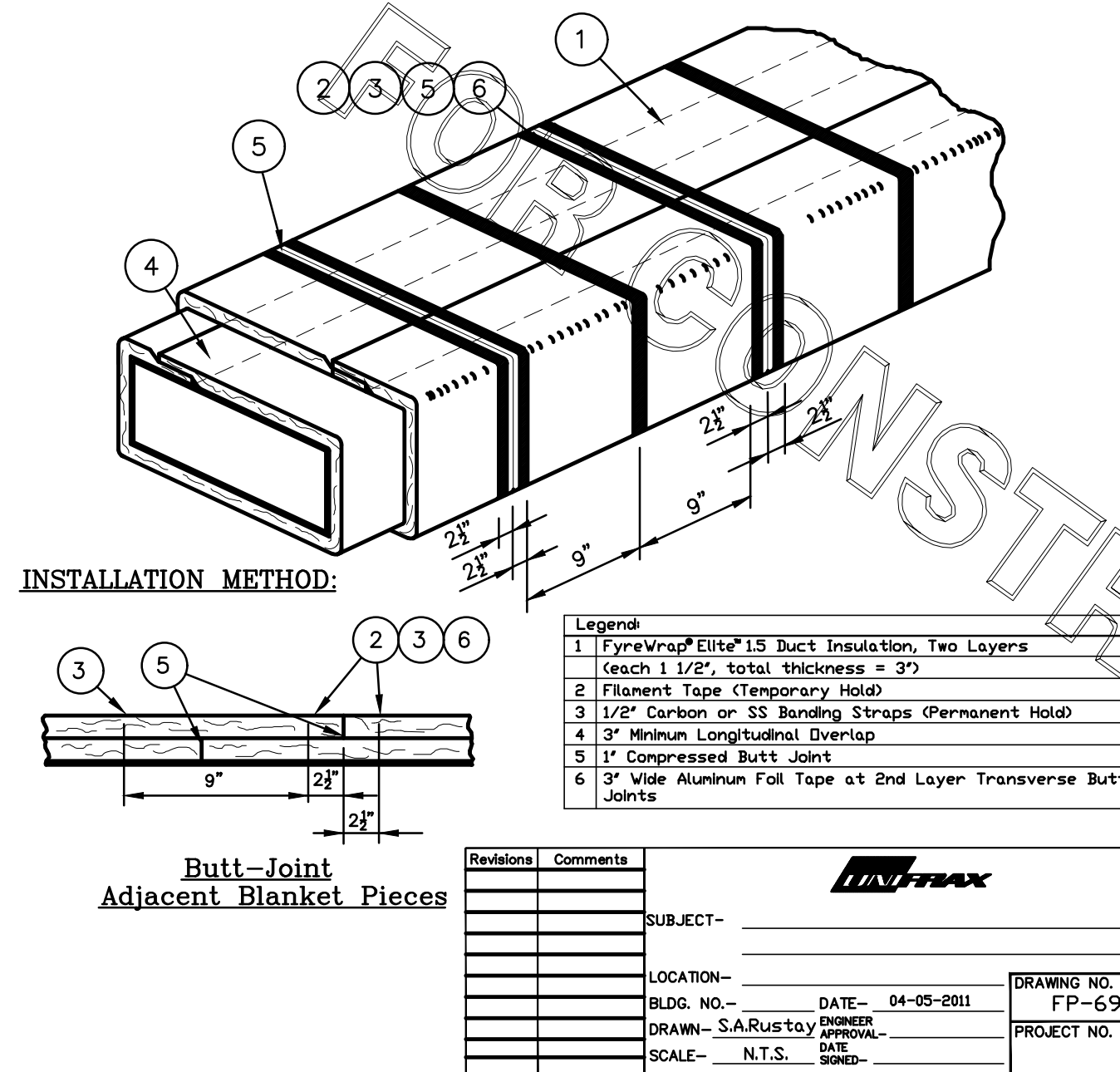
Drawn By: AK

Checked By: MK

Sheet

M3.I

FyreWrap® Elite® 1.5 Duct Insulation  
Commercial Kitchen Grease Duct System  
ASTM E 2336/ICCES AC101 System  
1 and 2 Hour Fire-Rated Enclosure, Shaft Alternative  
Zero Clearance to Combustibles  
Intertek Design No. UNI/BI 120-02  
Butt Joint System (Both Layers, Max. 24"x24" Duct)



### KITCHEN HOOD SYSTEMS NOTES

- CHICK-FIL-A MAINTAINS A NATIONAL ACCOUNT WITH HALTON CO. FOR THE HOODS. CHICK-FIL-A WILL PURCHASE AND PROVIDE THE HOODS FOR INSTALLATION BY THE MECHANICAL CONTRACTOR. THE MECHANICAL CONTRACTOR SHALL BE RESPONSIBLE FOR RECEIVING THE HOODS. CONTACT HALTON CO. AT 270-237-5600 FOR MORE INFO.
- THE FIRE SUPPRESSION SYSTEM SHALL CONSIST OF A COMPLETE WET ANSUL SYSTEM FURNISHED BY HALTON. THE HOOD SHALL BE FURNISHED PRE-PIPED BY HALTON.
- THE R-102 ANSUL FIRE SUPPRESSION SYSTEM EXTERNAL TO THE HOODS SHALL BE INSTALLED IN ACCORDANCE WITH HOOD MANUFACTURER'S SHOP DRAWINGS BY AN AUTHORIZED ANSUL SYSTEM INSTALLER SELECTED AND HIRED BY HALTON. COST FOR ANSUL INSTALLATION INCLUDED IN PRICE OF HOODS TO CFA.
- HOOD EXHAUST DUCTWORK SHALL BE 16 GA. BLACK STEEL WITH CONTINUOUS LIQUID TIGHT WELD OF JOINTS & SEAMS.
- TURNS IN GREASE EXHAUST DUCTWORK SHALL BE LONG RADIUS TYPE, WITH A CENTERLINE RADIUS R-3W/2 UNO, NO EXCEPTIONS ALLOWED. NO MITERED FITTINGS ALLOWED.
- ALL STAINLESS STEEL CLOSURE PANELS SHALL BE SUPPLIED BY HOOD MANUFACTURER AND INSTALLED BY THE MECHANICAL CONTRACTOR ACCORDING TO MANUFACTURER'S RECOMMENDATIONS.
- SLOPE ALL GREASE EXHAUST DUCT BACK TO HOOD AT 1/4" PER FOOT OF RUN.
- WRAP NEW GREASE DUCT WITH UNIFRAX FyreWRAP. INSULATION ON ACCESS DOORS SHALL BE INSTALLED ACCORDING TO MANUFACTURER'S INSTALLATION RECOMMENDATIONS. UNIFRAX FyreWRAP PRODUCT USED SHALL MEET LOCAL CODE REQUIREMENTS.
- SUPPORT HOODS WITH THREADED ROD AT EACH FACTORY SUPPORT POINT. EACH SUPPORT POINT MUST SUPPORT THE HOOD WEIGHT EQUALLY. ATTACH TO STRUCTURE AS DETAILED ON STRUCTURAL DRAWING AND/OR ARCHITECTURAL DRAWINGS. ATTACH HOOD TO WALL AT 16" INTERVALS ALONG FULL LENGTH OF HOOD ON TOP AND BOTTOM. ATTACHMENT TO WALL REQUIRES FIELD DRILLING OF SUPPORT ANGLE AT BACK OF HOODS. EACH WALL ATTACHMENT POINT MUST OCCUR AT A WALL STUD. ATTACHMENT HARDWARE TO BE #12-24 HEX HEAD SHEET METAL SCREW EQUAL TO TEXTRON SDS EDT265, LENGTH AS REQUIRED TO FULLY PENETRATE THE STUD.

### HOOD SCHEDULE

MARK	EXHAUST CFM	SP x TAB PORT	CAPTURE JET CFM & SP.	TYPE	COLLAR SIZE	WIDTH	DEPTH	HEIGHT	MANUFACTURER	MODEL	REMARKS
HOOD#1	1700	0.11'	113 @ 0.30'	BACK SHELF	Ø 8"x9"	15"	37"	38"	HALTON	KVL-2	1,3,4,6,7,13,15,18,20,21,22
HOOD#2	701	0.26'	30 @ 0.29'	BACK SHELF	8"x8"	45"	34"	38"	HALTON	KVL-C	1,2,4,8,9,11,13,15,17,18,19,20
HOOD#3	804	0.09'	68 @ 0.28'	CANOPY	9"x8"	90"	40"	49"	HALTON	KVM	1,3,4,5,8,10,12,14,15,16,18,19,23,24

- NOTES: DIMENSIONS OF HOODS INCLUDE BACK AND SIDE SPACERS (HEIGHT DOES NOT INCLUDE CLOSURE PANELS).
- REMARKS:
1. STAINLESS STEEL CONSTRUCTION.
  2. PROVIDE FULL HEIGHT SS CLOSURE PANEL WITH ACCESS PANEL IN FRONT LARGE ENOUGH TO REMOVE CAPTURE JET FAN.
  3. PROVIDE FULL HEIGHT SS CLOSURE PANEL WITH ACCESS PANEL IN FRONT LARGE ENOUGH TO SERVICE ANSUL COMPONENTS AND TO REMOVE THE CAPTURE JET FAN.
  4. PROVIDE PRE-PIPED ANSUL R-102 WET FIRE EXTINGUISHING SYSTEM.
  5. ANSUL CABINET AND COMPONENTS ABOVE HOOD ON RIGHT SIDE.
  6. ANSUL CABINET AND COMPONENTS ABOVE HOOD ON LEFT SIDE.
  7. PROVIDE 3" BACK SPACER WITH 1" THICK INSULATION.
  8. PROVIDE 3" CUSTOM BACK SPACER TO ACCOMMODATE PIN AND SLEEVE ELECTRICAL BOX. ZERO CLEARANCE TO COMBUSTIBLE BACK SPACER.
  9. PROVIDE 3" LEFT SIDE SPACER WITH 1" THICK INSULATION.
  10. PROVIDE NOTCHED LEFT END SIDE PANEL.
  11. PROVIDE 3"x3" HORIZONTAL AND VERTICAL TRIM ANGLE FOR LEFT SIDE OF HOOD TO FINISH OFF GAP AT WALL.
  12. PROVIDE SIDE SHIELD ON RIGHT SIDE.
  13. PROVIDE TOP PLENUM CAPTURE JET FAN, SPEED CONTROLLER AND COLLAR.
  14. PROVIDE FACTORY INSTALLED CAPTURE JET FAN IN PLENUM.
  15. PROVIDE CAPTURE JET AIR INLET AND COLLAR AT FRONT OF CLOSURE PANEL.
  16. PROVIDE PIN AND SLEEVE ELECTRICAL BOX (SINGLE CONNECTION). SEE ARCHITECTURAL AND ELECTRICAL DRAWINGS FOR ADDITIONAL INFORMATION.
  17. PROVIDE PIN AND SLEEVE ELECTRICAL BOX (DOUBLE CONNECTION). SEE ARCHITECTURAL AND ELECTRICAL DRAWINGS FOR ADDITIONAL INFORMATION.
  18. PROVIDE EQUIPMENT I.D. LABELS LOCATED ON FRONT LEADING EDGE OF HOOD.
  19. PROVIDE FACTORY WALL MOUNTING ANGLE AT TOP OF HOOD.
  20. PROVIDE NOTCHED RIGHT END SIDE PANEL.
  21. PROVIDE FULL LEFT END SIDE PANEL.
  22. PROVIDE GREASE CUP ON LEFT END.
  23. PROVIDE WITH ADJUSTABLE TRIM ANGLES.
  24. PROVIDE COUNTER MOUNTED SIDE CAPTURE JET PLENUM ASSEMBLY AND FAN ON LEFT SIDE OF HOOD.

#### CLEANOUT DOOR NOTE:

DUCT WRAP SHALL BE APPLIED TO THE CLEANOUT DOOR PER THE WRAP MFR'S INSTALLATION INSTRUCTIONS, NO EXCEPTIONS. ALSO, THE CLEANOUT DOOR MUST BE REMOVABLE WITHOUT TOOLS AND MUST BE CLEARLY AND PERMANENTLY LABELED.

#### GREASE EXHAUST DUCT NOTE:

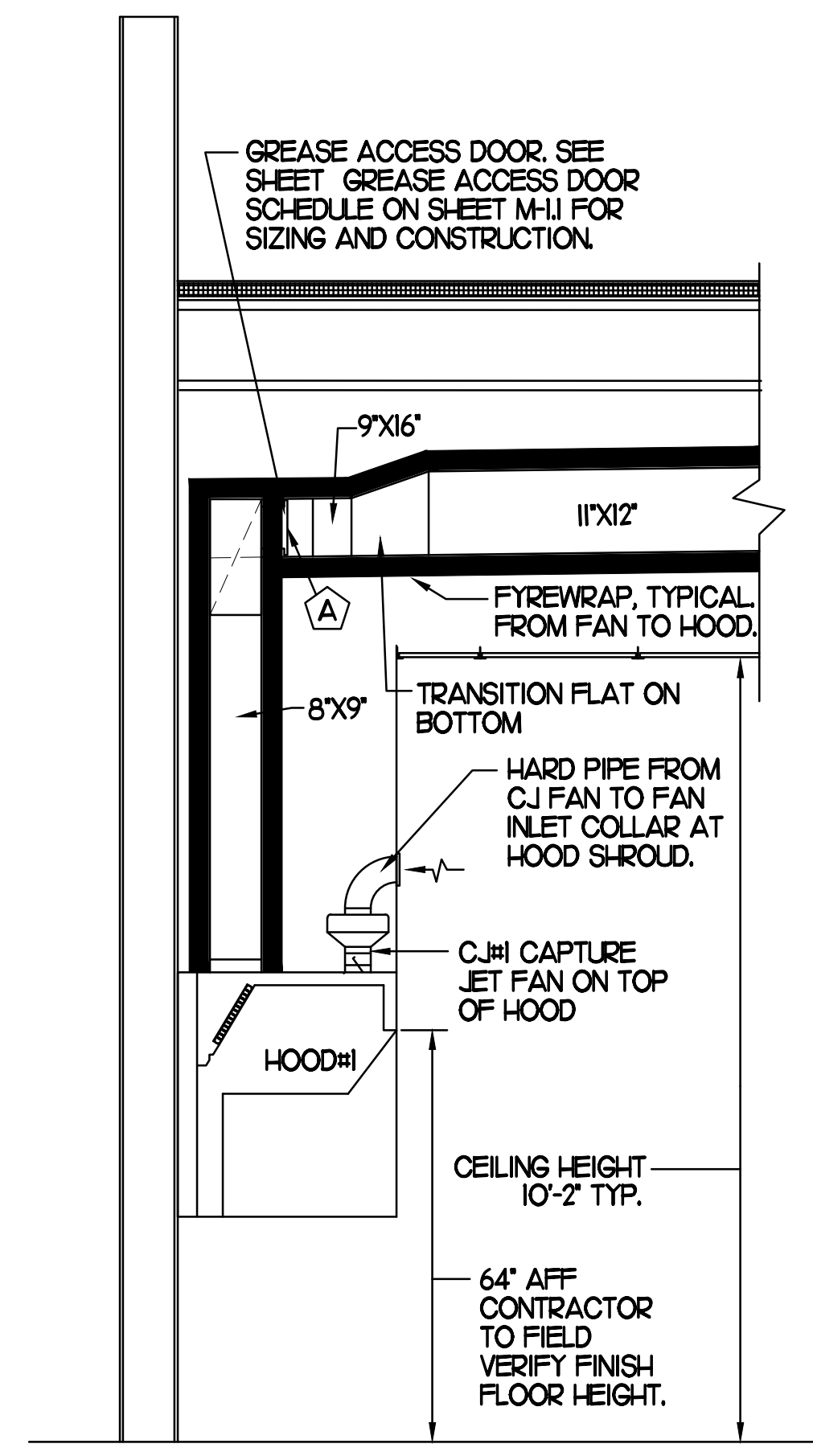
CLEARANCES ABOVE CEILING ARE TIGHT. MECHANICAL CONTRACTOR TO FIELD VERIFY EXACT ROUTING AND CLEARANCES PRIOR TO FABRICATING GREASE EXHAUST DUCT.

#### HOOD ELEVATIONS NOTE:

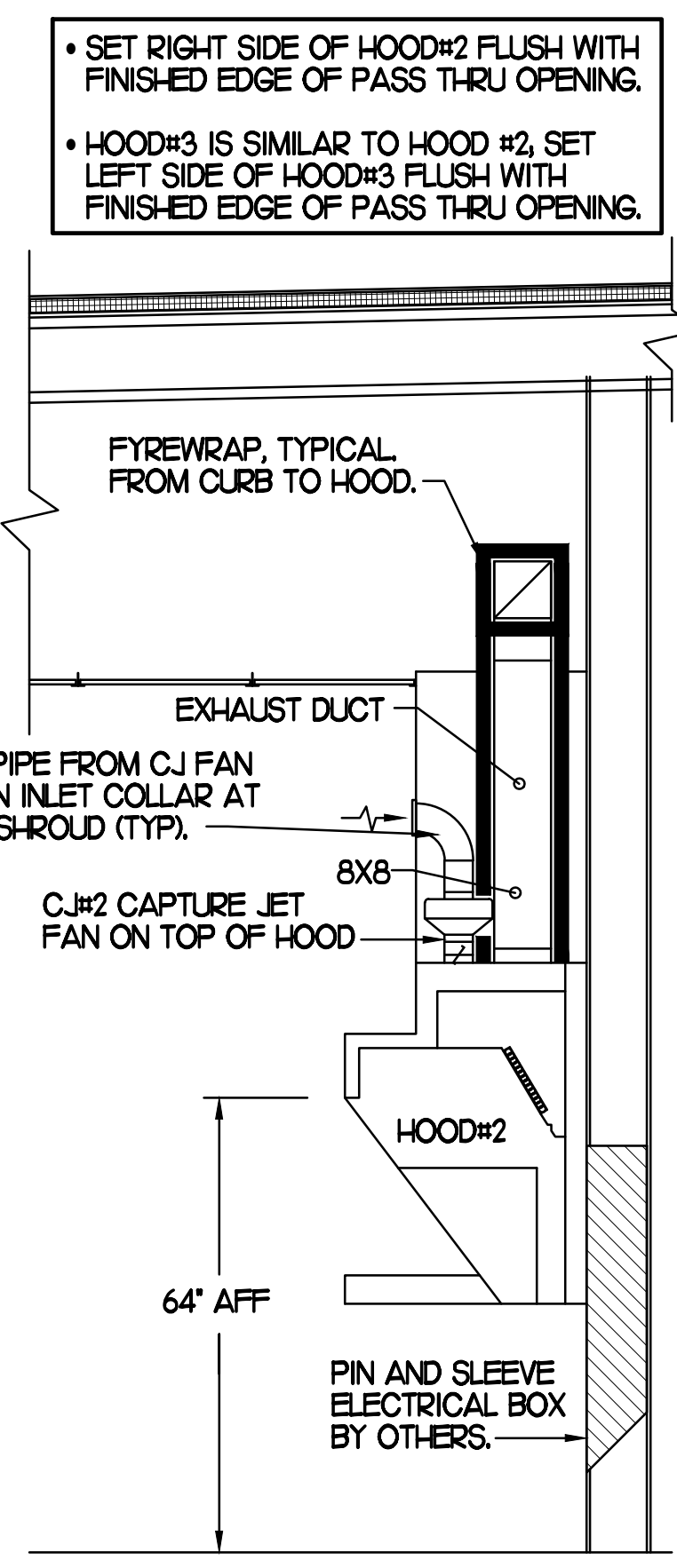
HOOD ELEVATIONS ON THIS SHEET ONLY SERVE ILLUSTRATIVE PURPOSES. SEE DETAILS ON ARCHITECTURAL SHEETS AND HALTON SHOP DRAWINGS ON SHEET M-11 FOR DETAILS ON STANDOFFS, CLEARANCES AND HOOD CONSTRUCTION.

#### CAPTURE JET FAN NOTES:

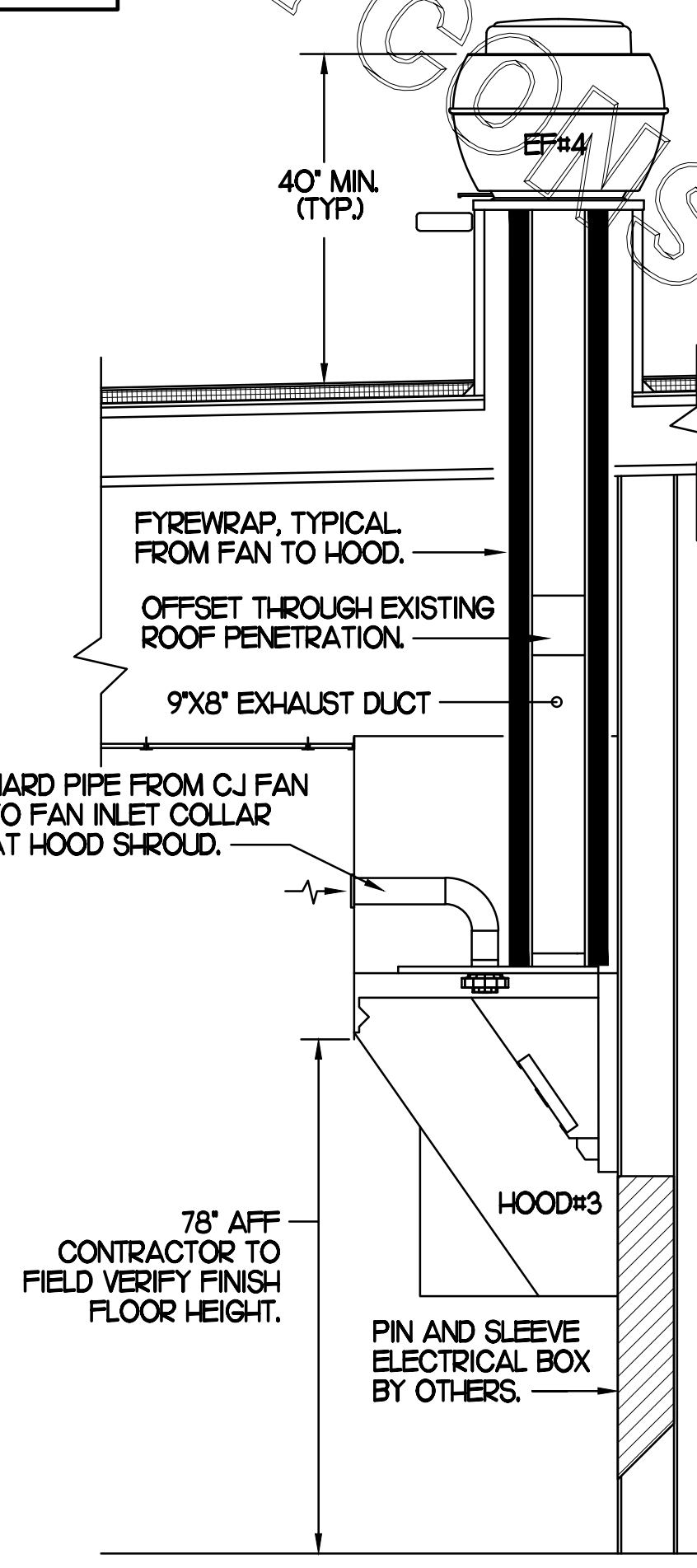
REFER TO 'CAPTURE JET FAN INSTALLATION AND DIMENSIONAL DATA' SCHEDULE ON HALTON SHOP DRAWINGS (SHEET M-11) FOR INFORMATION ON CAPTURE JET FANS C.J.#1 THROUGH C.J.#3.



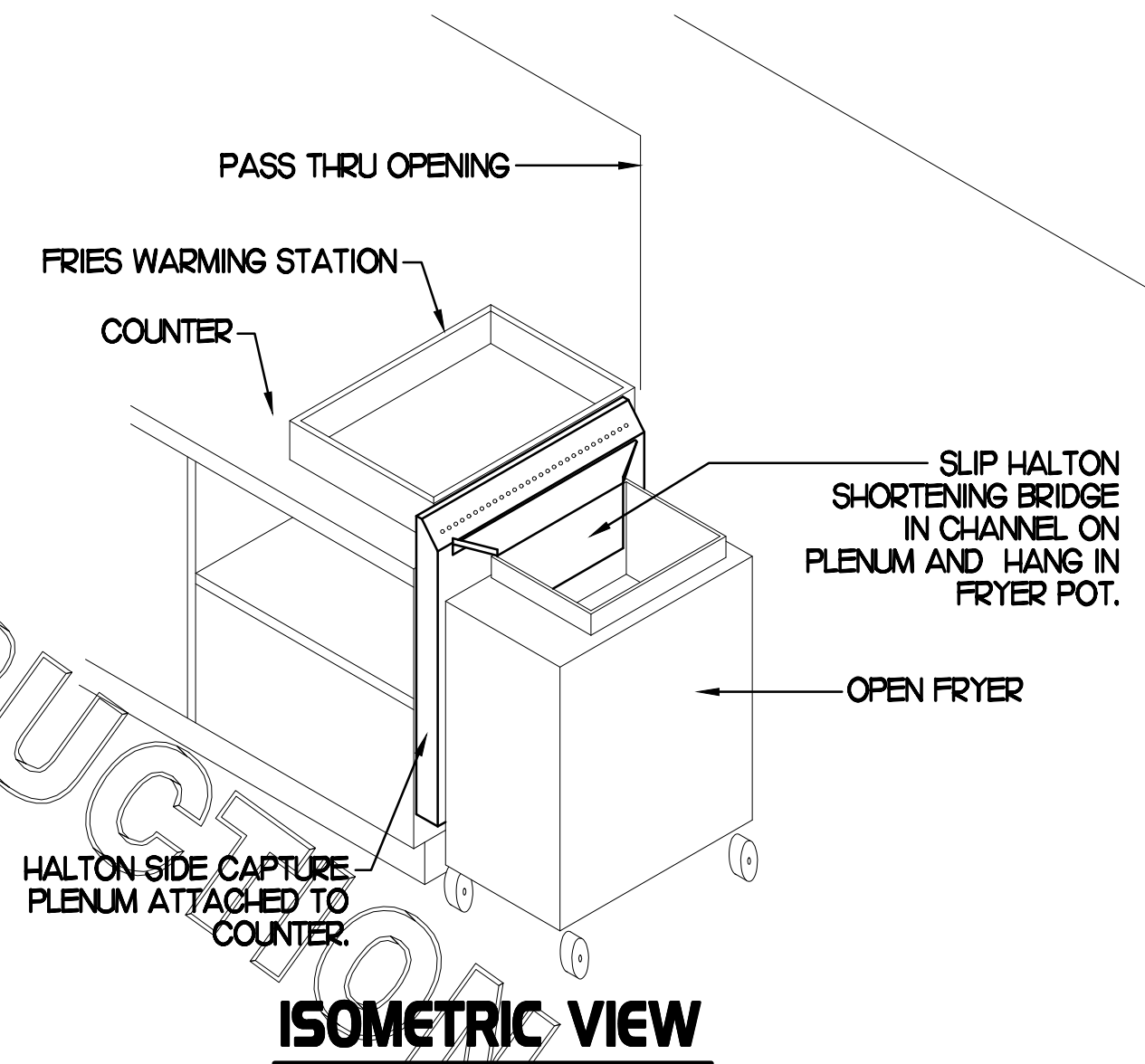
SECTION "A-A"



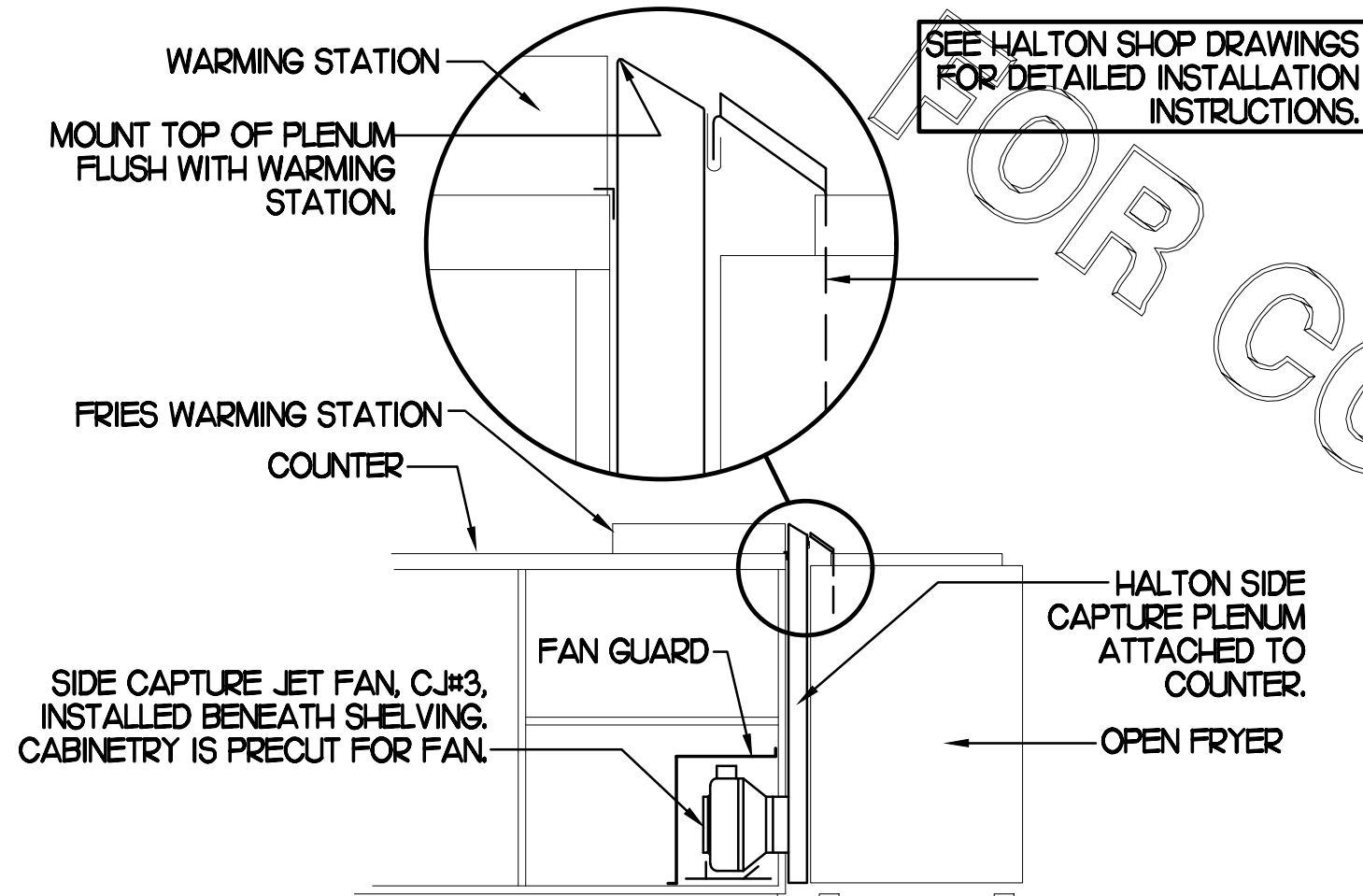
SECTION "B-B"



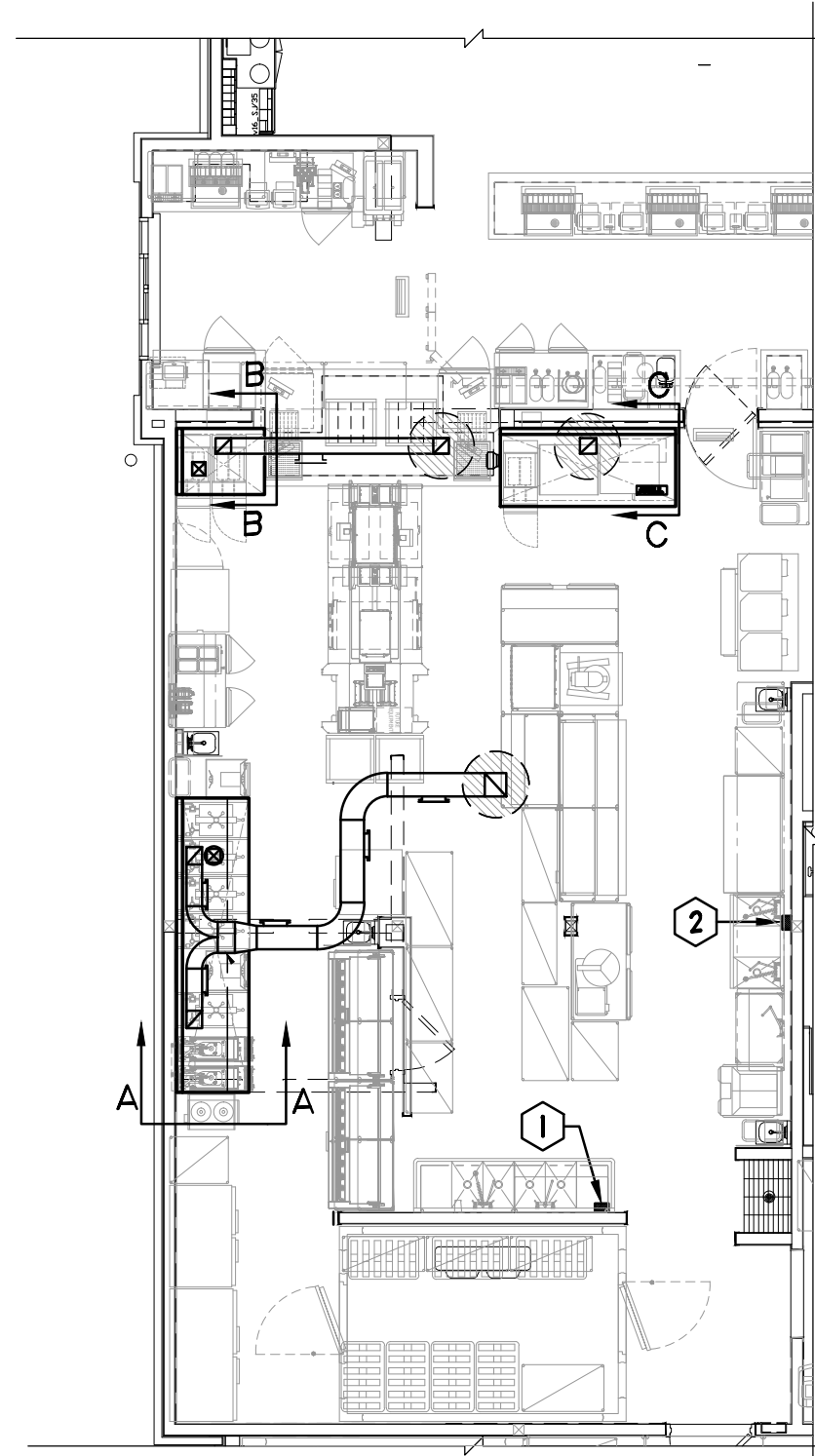
SECTION "C-C"



ISOMETRIC VIEW



FRONT VIEW



NOTE: SEE ARCHITECTURAL PLANS FOR EXACT HOOD LOCATIONS.

#### KEY NOTES

- ANSUL PULL STATION SERVING HOOD#1 ABOVE 4-COMPARTMENT SINK. LOCATE ANSUL PULL STATION BETWEEN 42" AND 48" AFF. COORDINATE EXACT LOCATION WITH KITCHEN EQUIPMENT ELEVATIONS. J-BOX AND CONDUIT ARE BY ELECTRICAL. PROVIDE RED BAKELITE LABEL WITH 1/2" HIGH LETTERS INDICATING THE HOODS SERVED, I.E. 'MAIN COOKLINE HOOD'.
- ANSUL PULL STATION SERVING HOOD#2 AND HOOD#3 ADJACENT TO VEGETABLE PREP SINK. LOCATE ANSUL PULL STATION BETWEEN 42" AND 48" AFF. COORDINATE EXACT LOCATION WITH KITCHEN EQUIPMENT ELEVATIONS. J-BOX AND CONDUIT ARE BY ELECTRICAL. PROVIDE RED BAKELITE LABEL WITH 1/2" HIGH LETTERS INDICATING THE HOODS SERVED, I.E. 'PASS THRU HOODS'.

### 3 HOOD ELEVATIONS

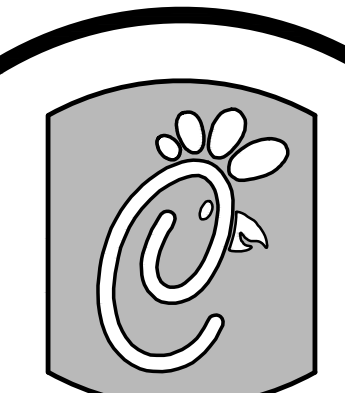
NONE

### 2 HALTON SIDE CAPTURE JET PLENUM

NOT TO SCALE

### 1 HOOD LAYOUT

1/8"=1'-0"



5200 Buffington Rd.  
Atlanta Georgia,  
30349-2998

Revisions:  
Mark Date By

△

Mark Date By

△

Mark Date By

△

Mark Date By

△



Kurtzyske & Associates  
CONSULTING ENGINEERS  
2900 Lebanon Pike, Ste 201  
Nashville, Tennessee 37214  
Telephone: (615) 255-5203  
Fax: (615) 255-5207  
Email: mail@kurtzyske.com

STORE  
CFA #2240  
Mercury Boulevard FSU  
110 Market Place Dr.  
Hampton, VA 23666

SHEET TITLE  
HOOD DETAILS  
& SCHEDULES

PROTOTYPE S06C-R

Job No. :16157.HFR

Store :2240

Date: 02.14.17

Drawn By: AK

Checked By: MK

Sheet

M2.I

FOR REFERENCE ONLY

**MODEL: KVL-2** \* FACTORY MUST BE ADVISED OF ANY SPECIAL REQUIREMENTS OF THE HOODS INSTALLED AT THE TIME OF ORDER

**STANDARD FEATURES**

- S.S. FILTERS (KSA) 7
- 1/2 S.S. FILTERS (KSA) 1
- CAPTURE-JET FIRE DAMPER \*
- STAND-OFF \*

**OPTIONS**

- REMOTE SWITCH PANEL \*
- FIRE PROTECTION \*
- ETL LISTED V/D EXHAUST DAMPER \*
- CEILING CLOSURE 3
- STD. BACKSPASH \*
- INSULATED BACKSPASH \*

**MATERIAL**

- EXPOSED SURFACES 18 GA. S.S. \*
- ALL 18 GA. S.S. \*

**COMMENTS:**

- CLOSURE HEIGHT = 51" (THREE SIDES)
- CEILING CLOSURE RECESSED 1" FROM FRONT TO CREATE SHELF
- FRONT CLOSURE PANEL WITH LEFT SIDE ACCESS TO ANSUL TANKS
- 18" ACCESS IDER RIGHT SIDE AT CAPTURE-JET W/ FRONT CJ INTAKE
- GREASE CUP ON LEFT END FULL LEFT END PANEL
- NOTCHED RIGHT END PANEL
- 3" REAR STAND-OFF TO HAVE 1" THICK INSULATION
- EQUIPMENT COVERED (CO) PRESSURE FRYERS (CO) GRILLS
- ANSUL WEIGHT= 63 LBS HOOD WEIGHT= 943 LBS

DATE	DWG. NO.	ITEM NO.	EXHAUST AIR INFORMATION
02.06.17	U17-109-01	H-1	CFM T.A.B. SP
PROJECT: CHICK-FIL-A #2240 MERCURY BLVD.			1700 .11' .22'
LOCATION: HAMPTON, VA			CAPTURE AIR INFORMATION
			CFM SP
SUBMITTED BY: HALTON CO.			113 .30'

**MODEL: KVL-C** \* FACTORY MUST BE ADVISED OF ANY SPECIAL REQUIREMENTS OF THE HOODS INSTALLED AT THE TIME OF ORDER

**STANDARD FEATURES**

- S.S. FILTERS (KSA) 2
- CAPTURE-JET FIRE DAMPER \*
- STAND-OFF \*

**OPTIONS**

- REMOTE SWITCH PANEL \*
- FIRE PROTECTION \*
- ETL LISTED V/D EXHAUST DAMPER \*
- CEILING CLOSURE 2
- STD. BACKSPASH \*
- INSULATED BACKSPASH \*

**MATERIAL**

- EXPOSED SURFACES 18 GA. S.S. \*
- ALL 18 GA. S.S. \*

**COMMENTS:**

- CLOSURE HEIGHT = 51" (THREE SIDES)
- CEILING CLOSURE RECESSED 1" FROM FRONT TO CREATE SHELF
- FRONT ACCESS DOOR CENTERED AT CAPTURE-JET W/ FRONT CJ INTAKE
- NOTCHED RIGHT END PANEL
- DOUBLE RECEPTACLE PIN & SLEEVE
- 3" X 3" TRIM STRIP FOR STANDOFF ON LEFT END
- 3" SIDE STAND-OFF TO HAVE 1" THICK INSULATION
- EQUIPMENT COVERED (CO) FRYERS
- HOOD WEIGHT= 800 LBS

DATE	DWG. NO.	ITEM NO.	EXHAUST AIR INFORMATION
02.06.17	U17-109-01	H-2	CFM T.A.B. SP
PROJECT: CHICK-FIL-A #2240 MERCURY BLVD.			701 .26' .48'
LOCATION: HAMPTON, VA			CAPTURE AIR INFORMATION
			CFM SP
SUBMITTED BY: HALTON CO.			30 .29'

**MODEL: KVM** \* FACTORY MUST BE ADVISED OF ANY SPECIAL REQUIREMENTS OF THE HOODS INSTALLED AT THE TIME OF ORDER

**STANDARD FEATURES**

- S.S. FILTERS (KSA) 4
- CAPTURE-JET FIRE DAMPER \*
- STAND-OFF \*
- INCANDESCENT LIGHT 1

**OPTIONS**

- REMOTE SWITCH PANEL \*
- FIRE PROTECTION \*
- ETL LISTED V/D EXHAUST DAMPER \*
- CEILING CLOSURE 3
- STD. BACKSPASH \*
- INSULATED BACKSPASH \*

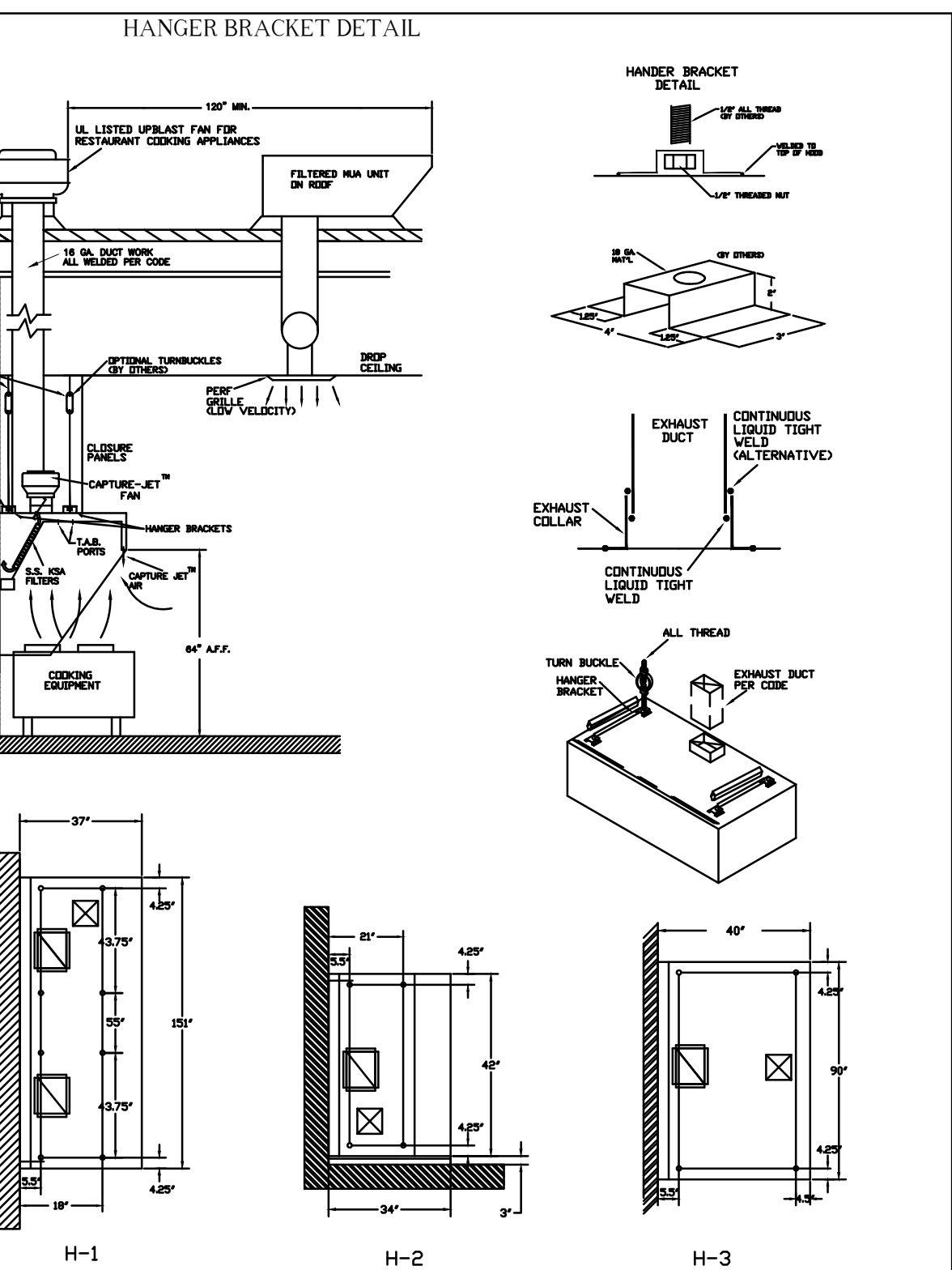
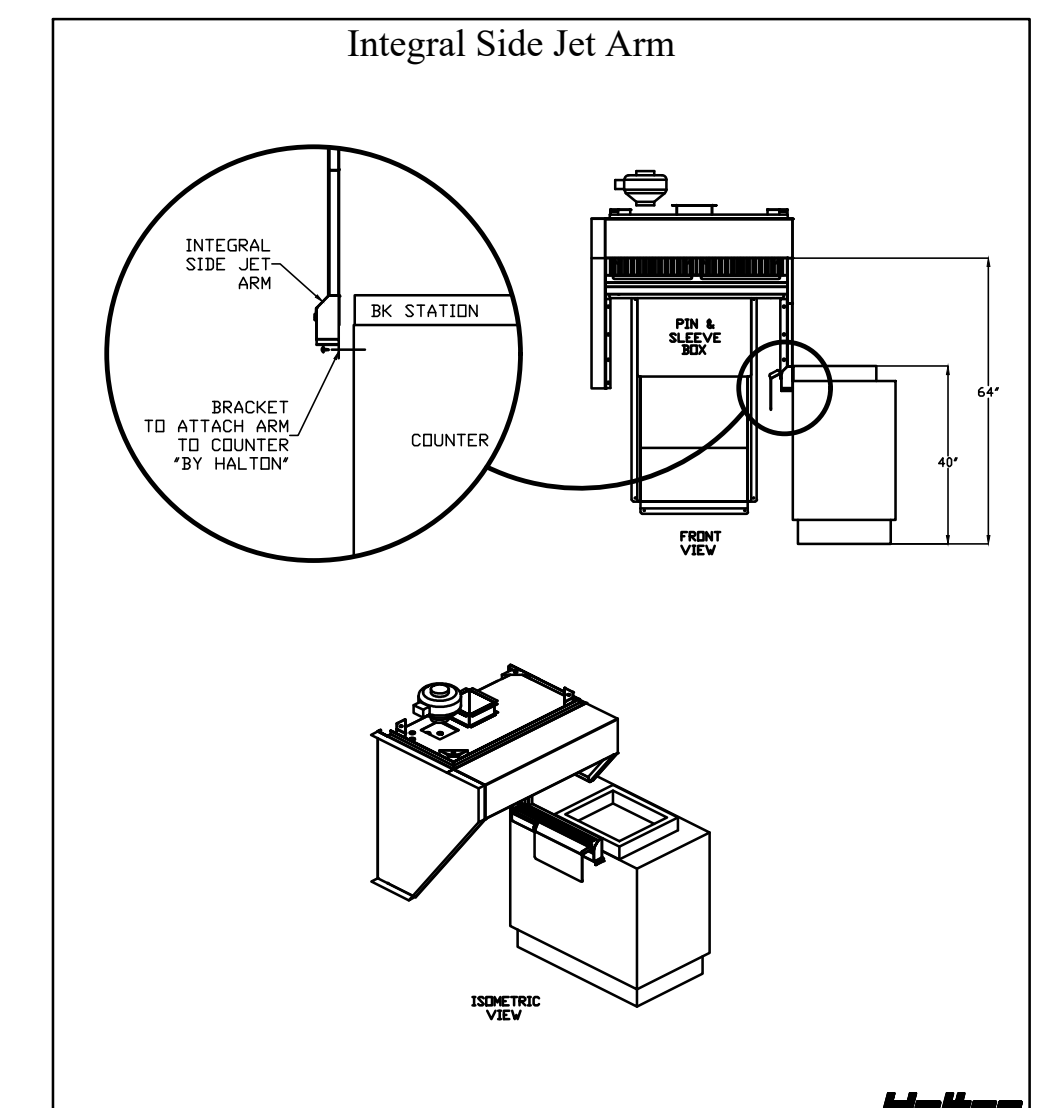
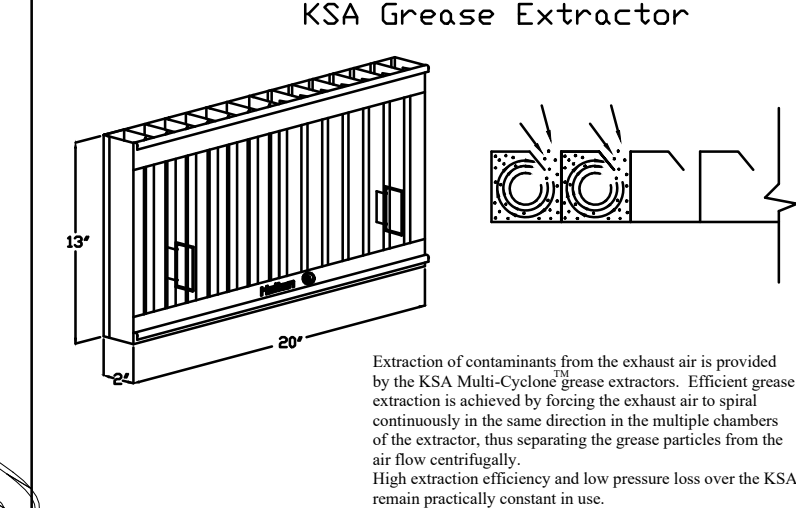
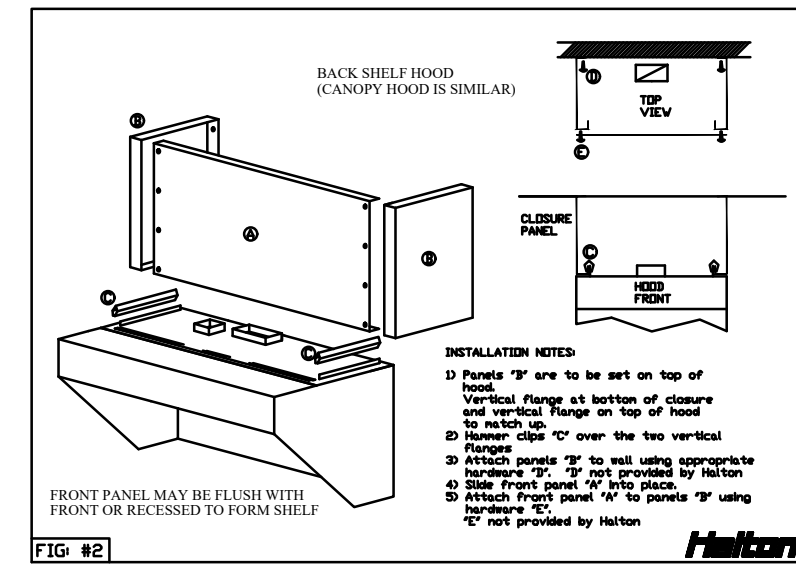
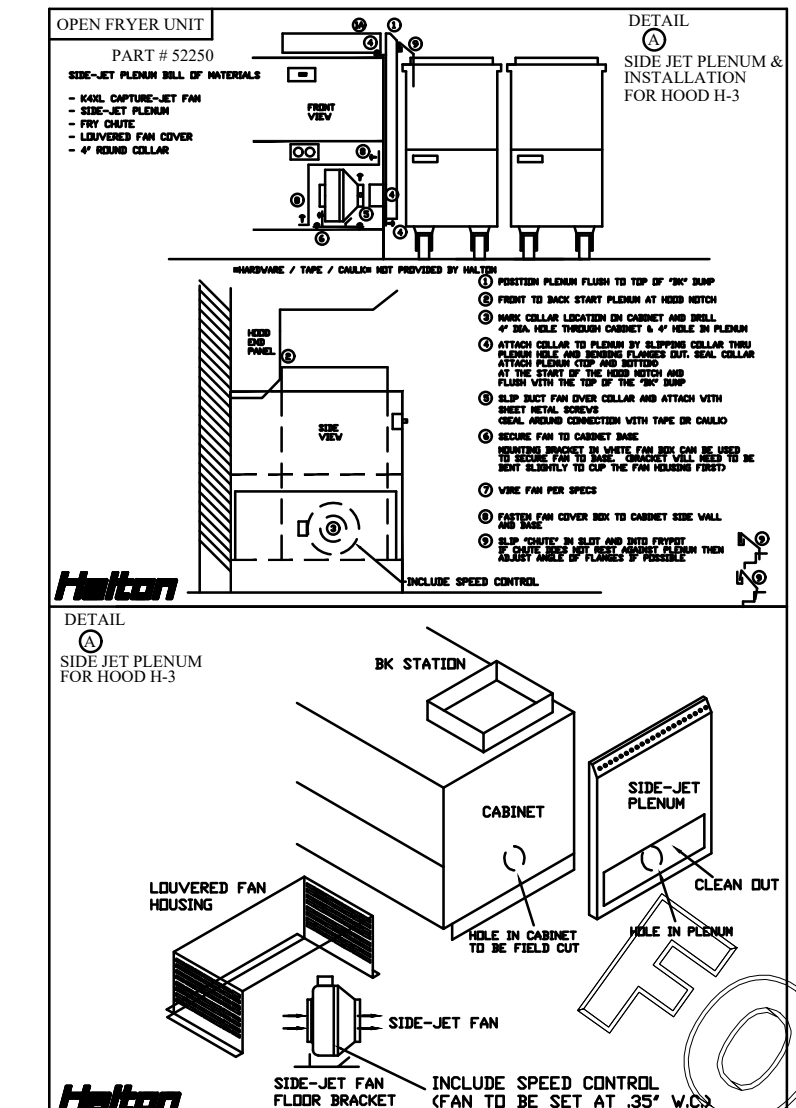
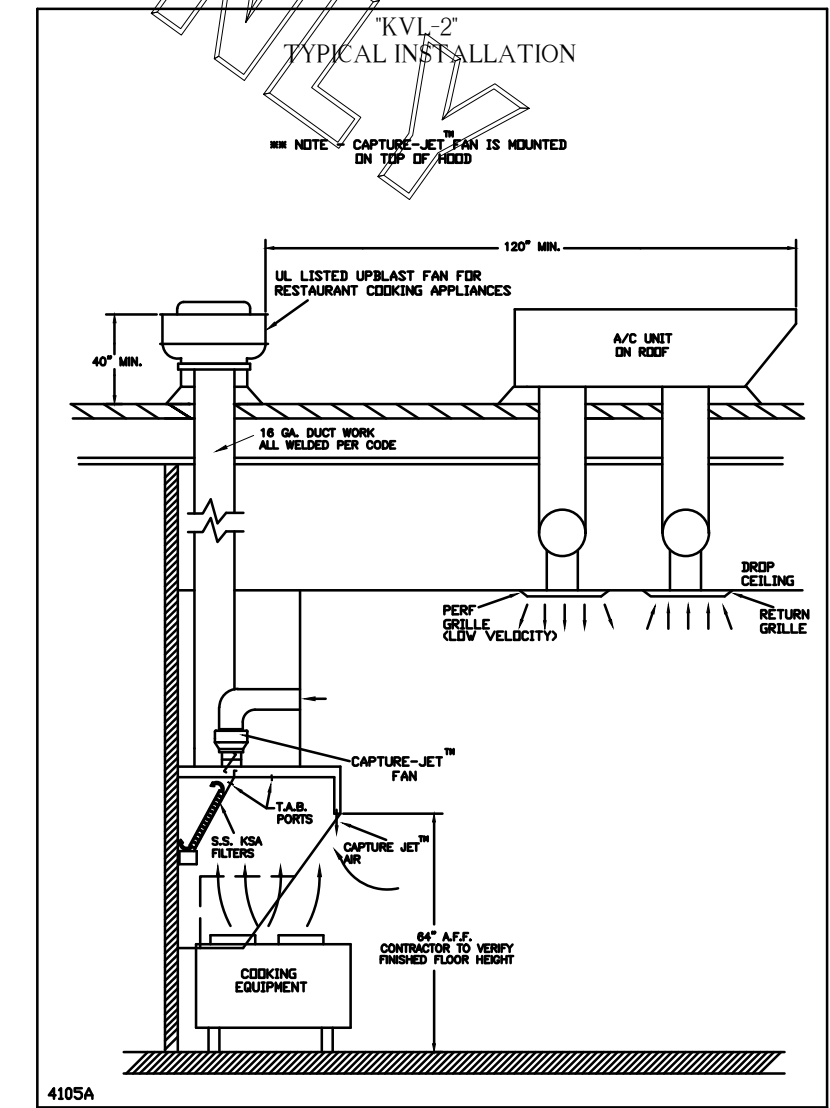
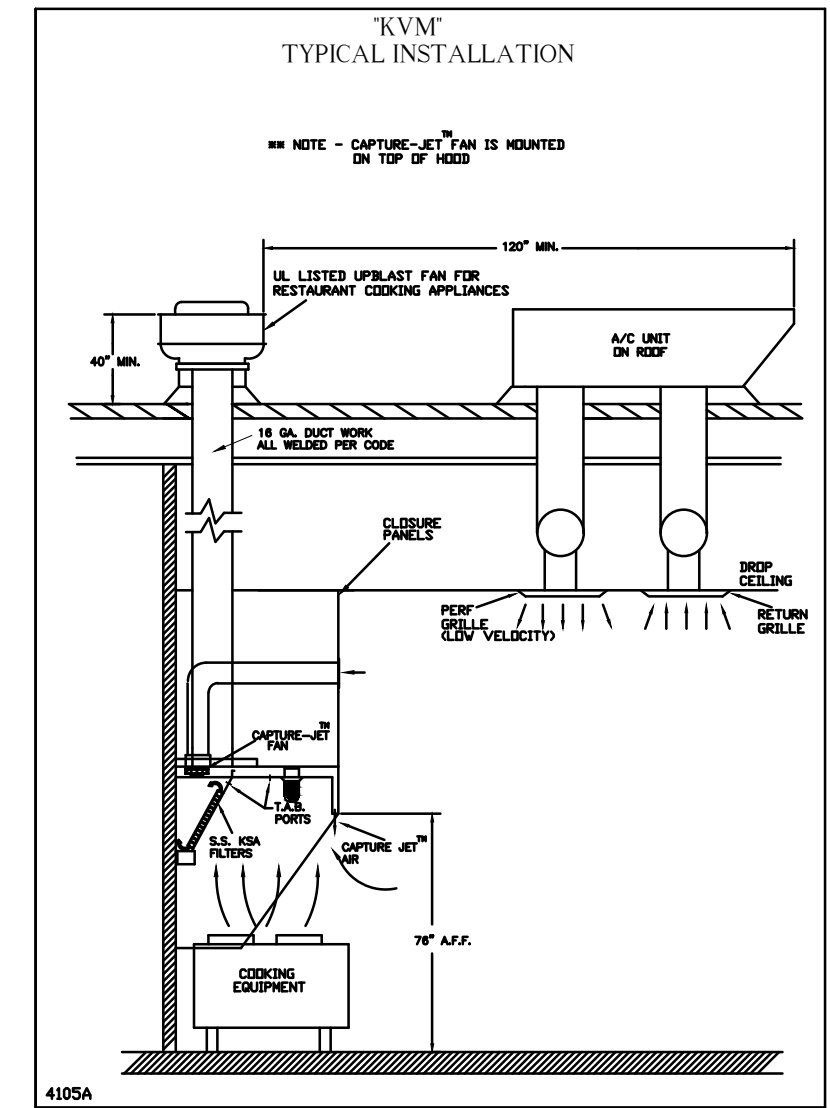
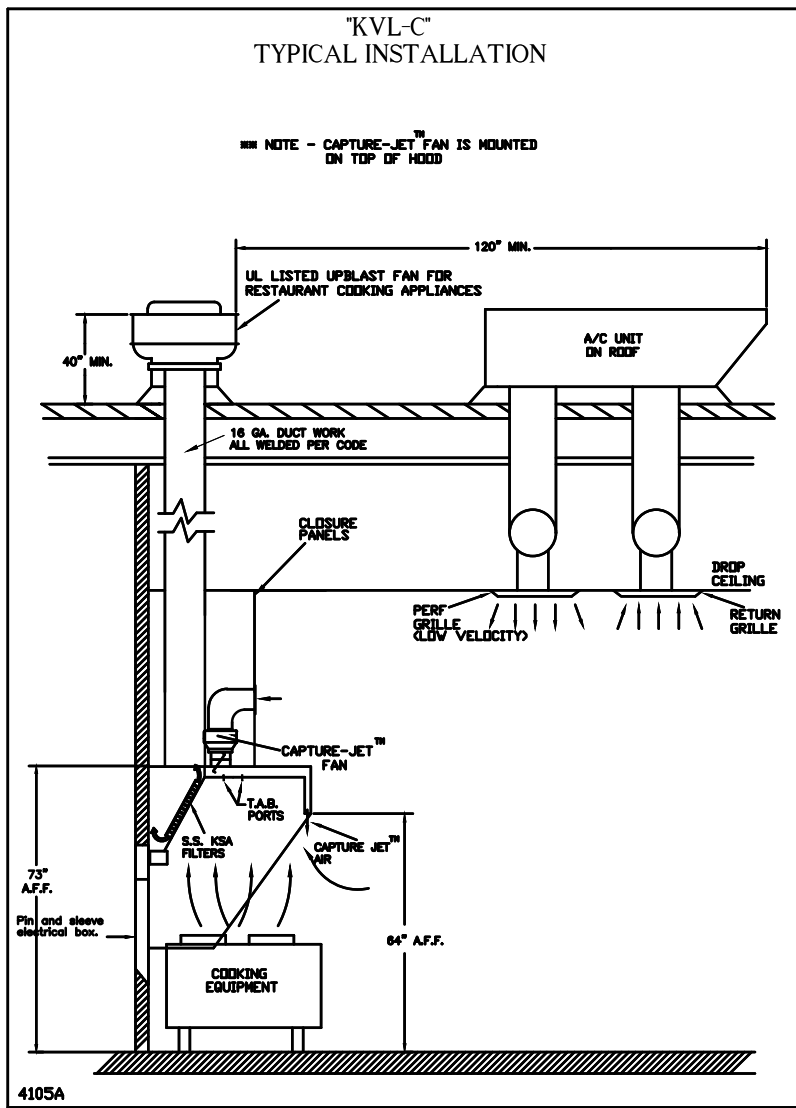
**MATERIAL**

- EXPOSED SURFACES 18 GA. S.S. \*
- ALL 18 GA. S.S. \*

**COMMENTS:**

- CLOSURE HEIGHT = 39" (THREE SIDES)
- CEILING HEIGHT = 128"
- FRONT CLOSURE PANEL WITH 54"x24" ACCESS DOOR
- RIGHT SIDE ACCESS TO ANSUL TANKS & 18" ACCESS DOOR LEFT SIDE (ACCESS CJ FAN)
- SIDE-JET FLENUM SUPPLIED BY OTHERS (DETAIL "A")
- CUSTOM 18" SINGLE RECEPTACLE PIN & SLEEVE
- NOTCHES LEFT END PANEL
- SIDE SHIELD ON RIGHT SIDE HOOD TO GET ADJUSTABLE FROM ANGLES
- EQUIPMENT COVERED (CO) FRYERS, GRIDDLE, OVEN
- ANSUL WEIGHT= 63 LBS HOOD WEIGHT= 600 LBS

DATE	DWG. NO.	ITEM NO.	EXHAUST AIR INFORMATION
02.06.17	U17-109-01	H-3	CFM T.A.B. SP
PROJECT: CHICK-FIL-A #2240 MERCURY BLVD.			804 .09' .31'
LOCATION: HAMPTON, VA			CAPTURE AIR INFORMATION
			CFM SP
SUBMITTED BY: HALTON CO.			68 .28'



**Capture-Jet Fan Installation and Dimensional Data**

Front of Closures

CJ Intake w/ Collar Fitting (Back side)

Closure Front

MODEL	AIR FLOW @1' SP	Ød	A	HP	FLA	VOLTAGE	LBS.
K4XL	30 CFM - 80 CFM	9.50"	4.0"	6.0"	.11	120/1/60	6.6
K6XL	70 CFM - 170 CFM	13.20"	6.0"	6.0"	.20	120/1/60	10.6
K8XL	100 CFM - 240 CFM	13.20"	8.0"	6.0"	.20	120/1/60	11

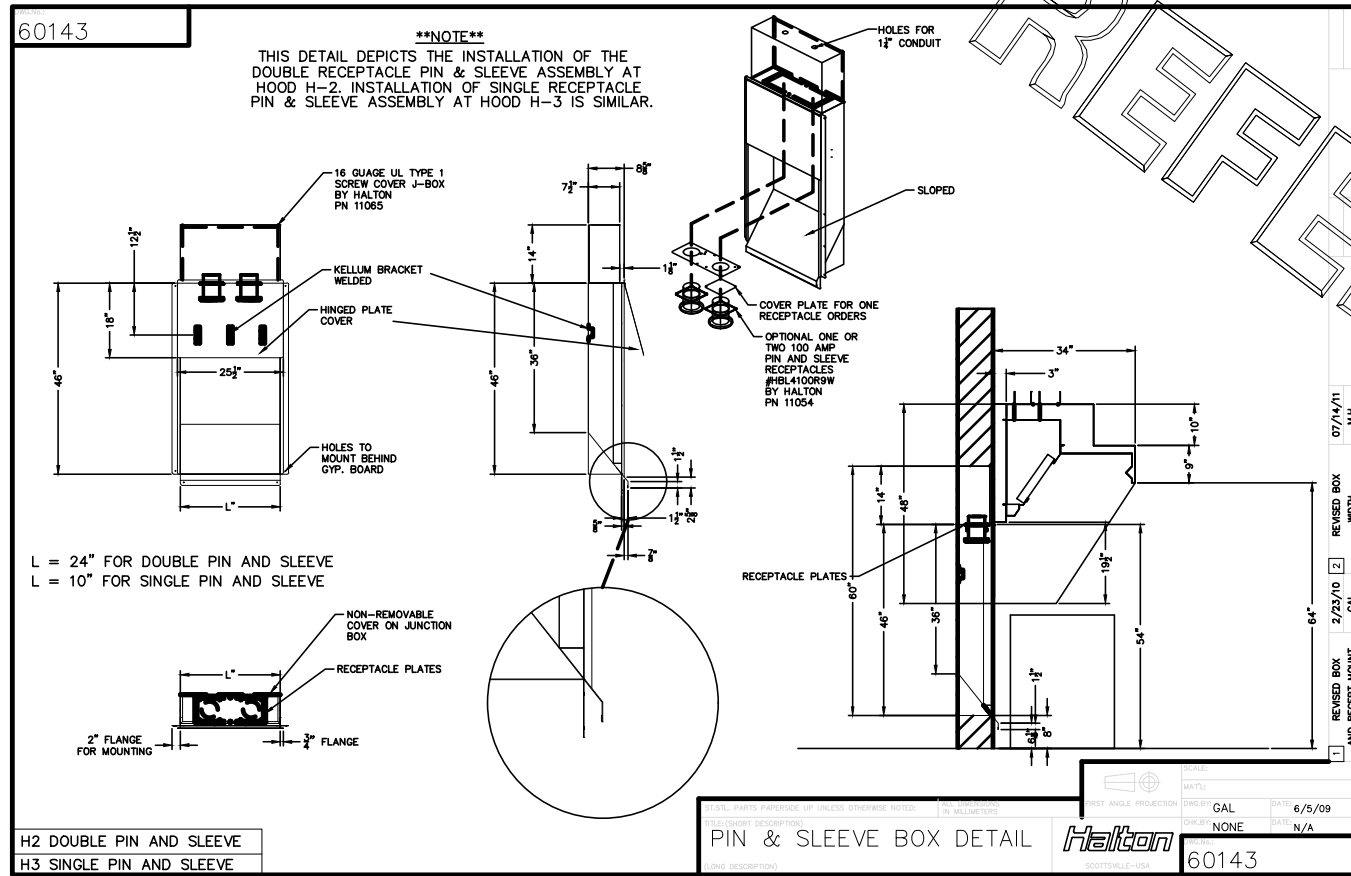
5 AMP SPEED CONTROLLER LOCATION

TOP OF HOOD

MOTOR CTRL. PANEL

PROJECT: CHICK-FIL-A #2240 DATE: 02.06.17

LOCATION: HAMPTON, VA DWG: U17-109-01



**Halton**

MODEL: KVL-2 SERIAL NO.

**Halton**

MODEL: KVL-C SERIAL NO.

**Halton**

GENERAL REQUIREMENTS

- NEVER EXCEED COOKING SURFACE TEMPERATURE
- USE OF COOKING TO THE COOKING SURFACE. SEE TABLE 1 TO FRONT
- MODIFY EXHAUST AIR FLOW, SEE TABLE 1
- NEVER EXCEED EXHAUST AIR FLOW, SEE TABLE 1
- NEVER EXCEED EXHAUST AIR FLOW, SEE TABLE 1
- NEVER EXCEED EXHAUST AIR FLOW, SEE TABLE 1
- NEVER EXCEED EXHAUST AIR FLOW, SEE TABLE 1
- NEVER EXCEED EXHAUST AIR FLOW, SEE TABLE 1

HALTON HOODS - ETL LISTED PER LATEST 730 STANDARD - BUILT PER NFPA 96 - NSF LISTED

THIS DRAWING MUST BE CHECKED, SIGNED AND RETURNED TO THE APPROPRIATE FACTORY. PLEASE VERIFY THE FOLLOWING:

- INSTALLATION INFORMATION, MOUNTING POSITIONS AND DIMENSIONS
- THE LOCATION AND TYPE OF COOKING EQUIPMENT.

NOTE TO APPROVER: ANY CHANGES IN COOKING EQUIPMENT SUCH AS INCREASED ENERGY INPUTS OR EQUIPMENT POSITION MAY AFFECT EXHAUST AIRFLOW. HALTON MUST BE NOTIFIED IF ANY OF THESE CHANGES OCCUR. A RECALCULATION EXHAUST AIRFLOW MAY BE REQUIRED.

APPROVED FOR FABRICATION:  WITH NO CHANGES  WITH CHANGES AS NOTED

APPROVED BY: \_\_\_\_\_ DATE: \_\_\_\_\_

MAIL APPROVED DRAWINGS TO APPROPRIATE FACTORY BELOW: WWW.HALTONCOMPANY.COM

HALTON CO. (USA) 101 INDUSTRIAL DRIVE SCOTTSVILLE, KY 42164

HALTON CO. (CANADA) 1021 BREVIK PLACE MISSISSAUGA, ON L4W 3R7

REVISION DESCRIPTION

REV.	DATE	BY	DATE
1			
2			
3			
4			
5			
6			
7			

PROJECT: CHICK-FIL-A #2240 MERCURY BLVD. LOCATION: HAMPTON, VA

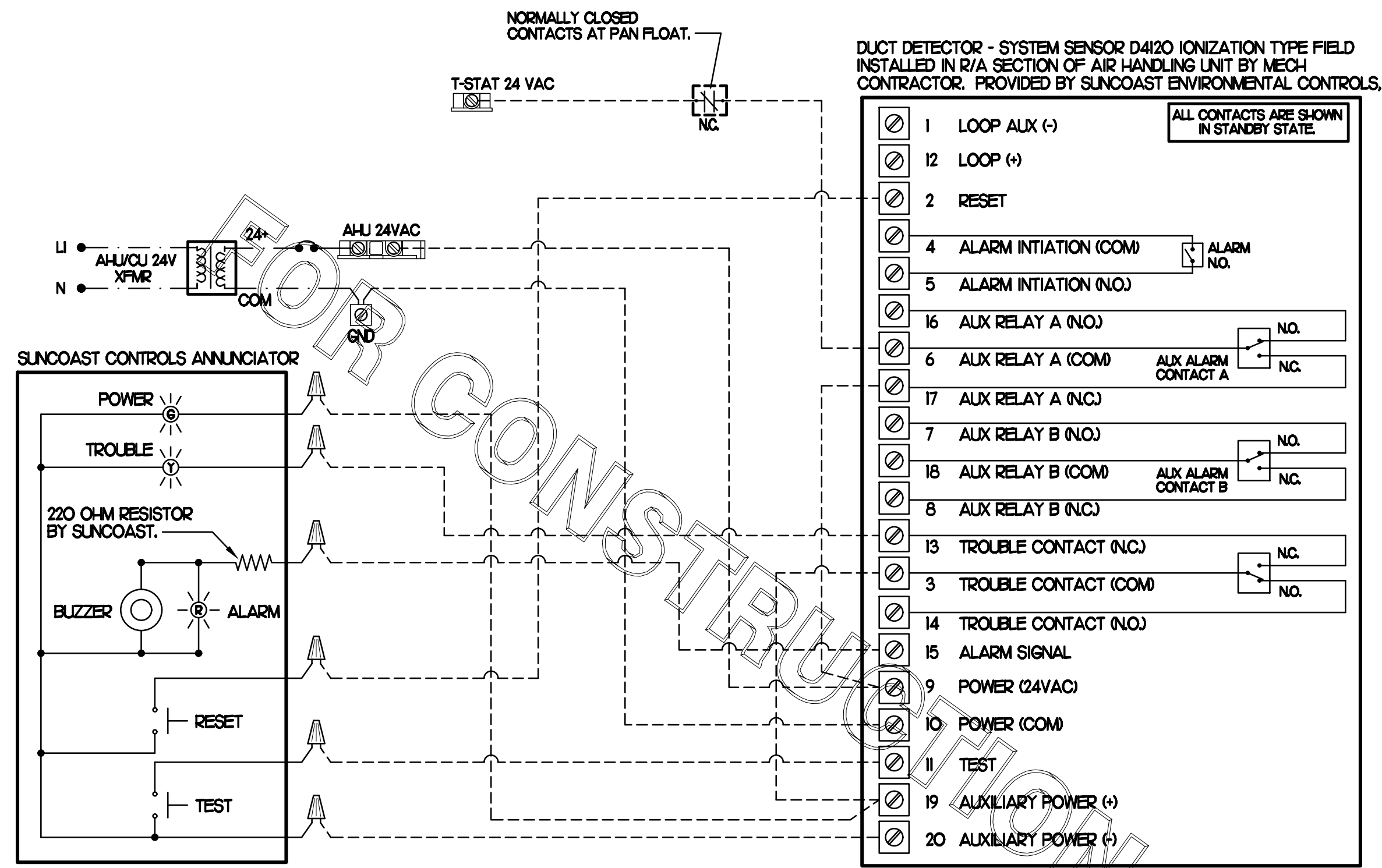
DRAWN BY: M.H. DATE: 02.06.17

SCALE: NTS

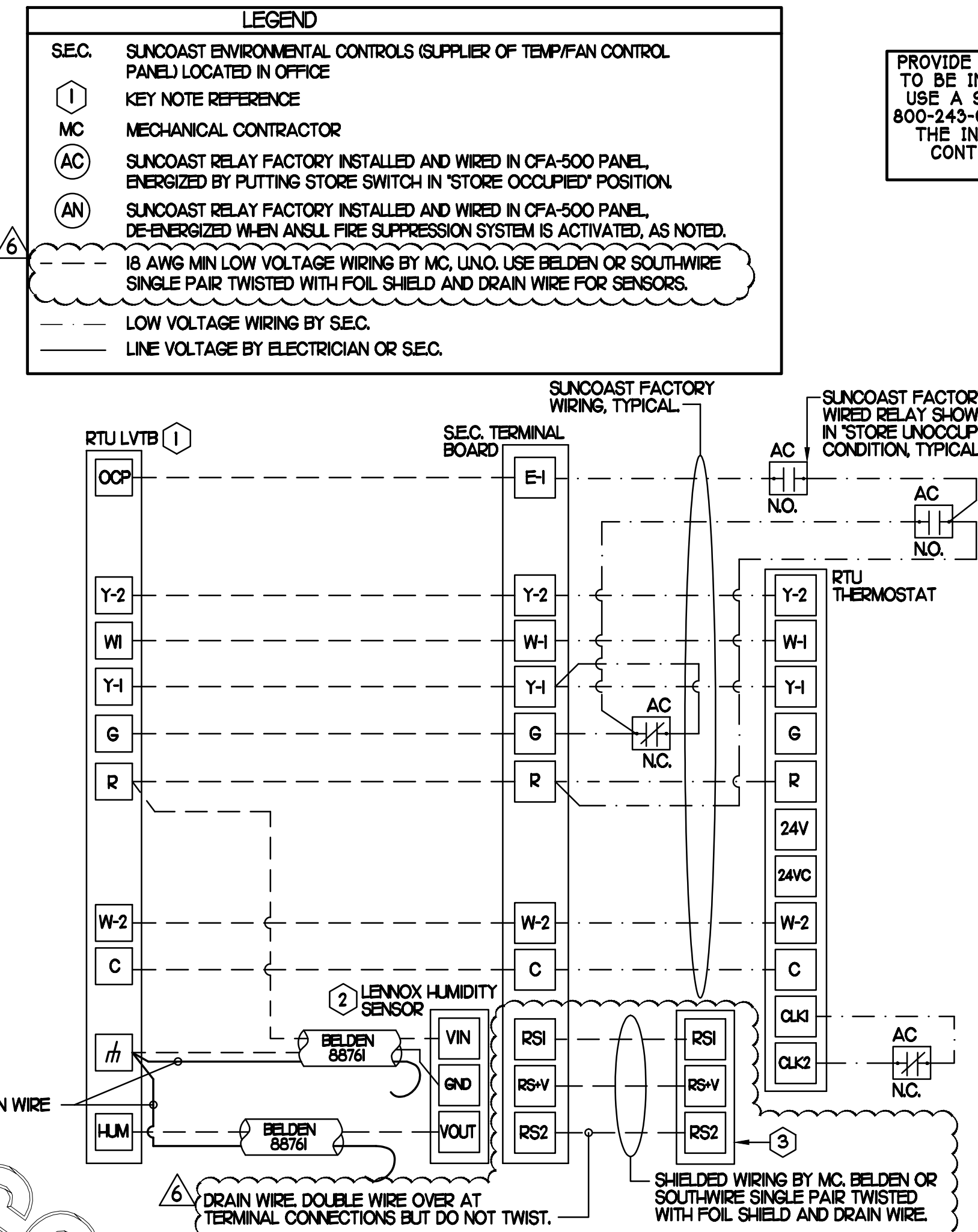
Halton Dwg: U17-109-01

**Halton** CARE FOR INDOOR AIR

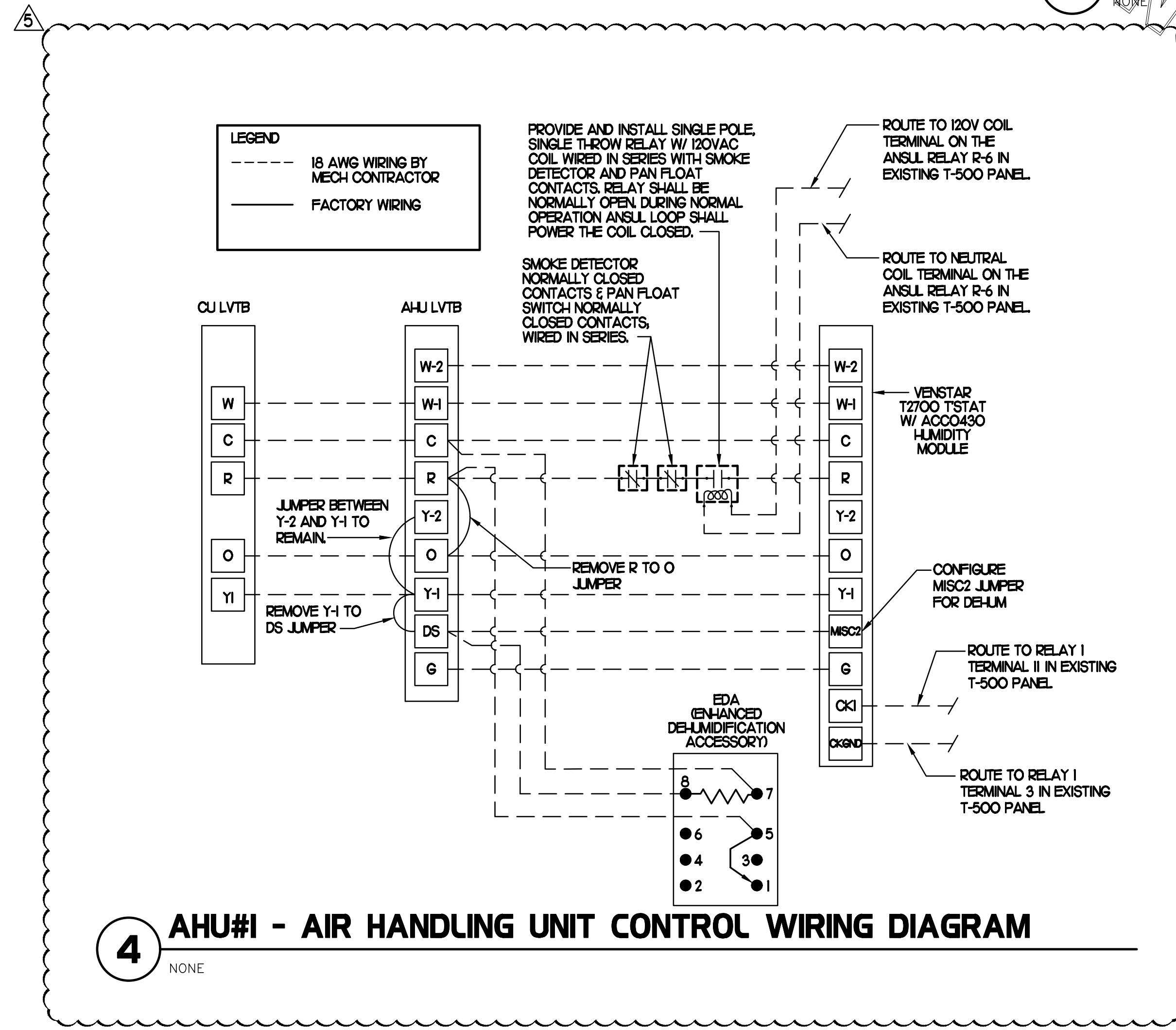
Sheet **MHI**



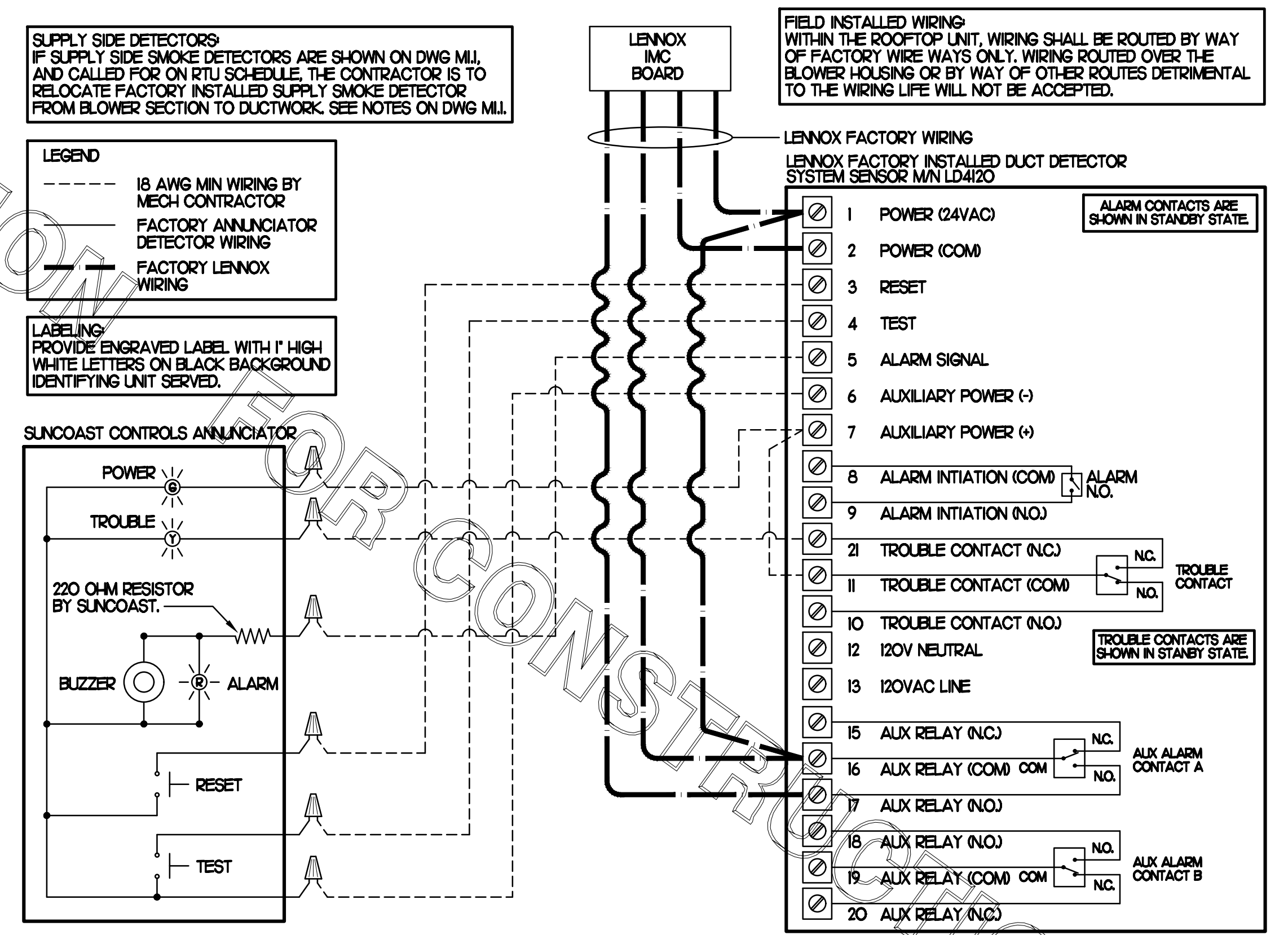
**3 AHU#1 SMOKE DETECTOR AND ANNUNCIATOR WIRING DIAGRAM**  
NO SCALE



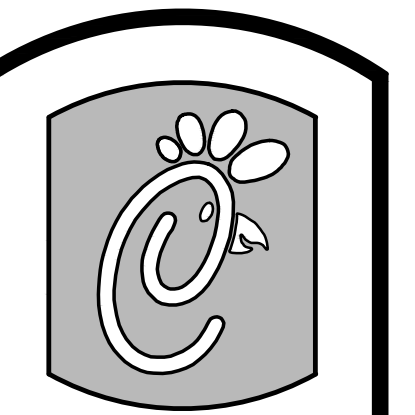
**2 ROOFTOP UNIT CONTROL WIRING - LENNOX**  
NONE



**4 AHU#1 - AIR HANDLING UNIT CONTROL WIRING DIAGRAM**  
NONE



**1 SMOKE DETECTOR AND ANNUNCIATOR WIRING DIAGRAM - LENNOX**  
NO SCALE



5200 Buffington Rd.  
Atlanta Georgia,  
30349-2998

Revisions:  
Mark Date By

10/05/17  
DESIGNNOTE  
CHANGES

Mark Date By

Mark Date By

Mark Date By  
06/12/17

ELECTRICAL &  
PLUMBING REVISIONS

Professional Engineer  
Kurtzyske  
Lic. No. 32021

Kurtzyske & Associates  
CONSULTING ENGINEERS  
2900 Lebanon Pike, Ste 201  
Nashville, Tennessee 37214  
Telephone: (615) 255-5203  
Fax: (615) 255-5207  
Email: mail@kurtzyske.com

STORE  
CFA #2240  
Mercury Boulevard FSU  
110 Market Place Dr.  
Hampton, VA 23666

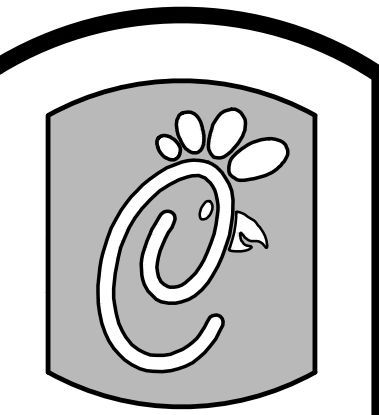
SHEET TITLE  
HVAC  
CONTROLS

PROTOTYPE S06C-R

Job No. :16157.HFR  
Store :2240  
Date: 02.14.17  
Drawn By: AK  
Checked By: MK

Sheet

**M4.I**



Chick-fil-A

5200 Buffington Rd.  
Atlanta Georgia,  
30349-2998

Revisions:  
Mark Date By

△ \_\_\_\_\_

Mark Date By

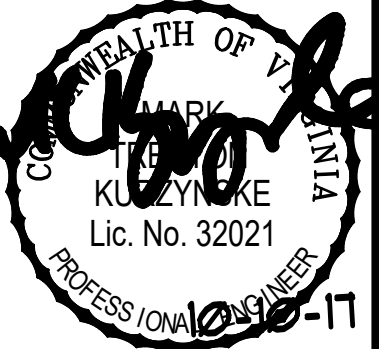
△ \_\_\_\_\_

Mark Date By

△ \_\_\_\_\_

Mark Date By

△ \_\_\_\_\_



Kurtzyske & Associates  
CONSULTING ENGINEERS  
2900 Lebanon Pike, Ste 201  
Nashville, Tennessee 37214  
Telephone: (615) 255-5203  
Fax: (615) 255-5207  
Email: mail@kurtzyske.com

STORE  
CFA #2240  
Mercury Boulevard FSU  
110 Market Place Dr.  
Hampton, VA 23666

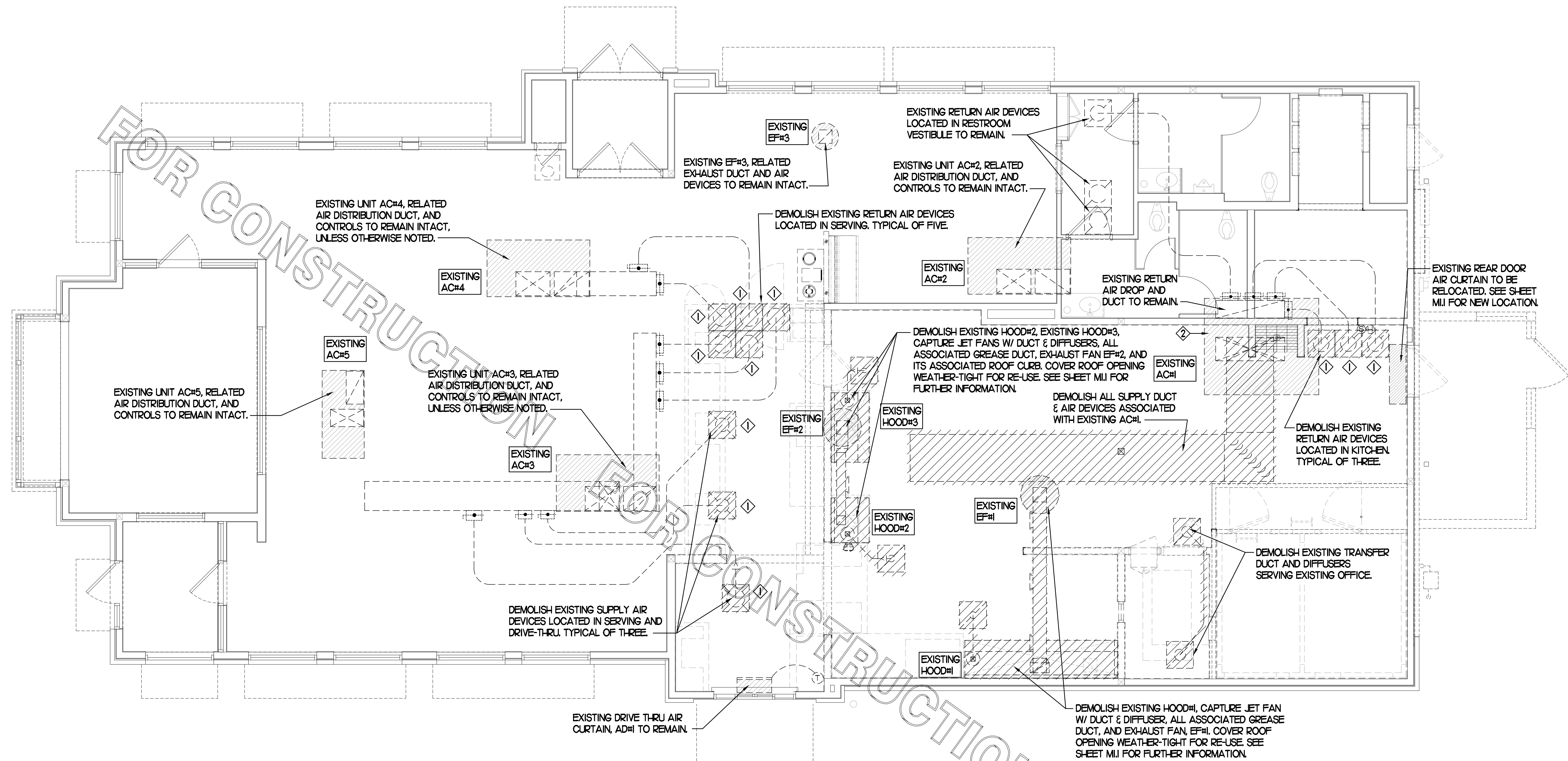
SHEET TITLE  
MECHANICAL  
DEMO PLAN

PROTOTYPE S06C-R

Job No. : 1615Z.HFR  
Store : 2240  
Date: 02.14.17  
Drawn By : AK  
Checked By: MK

Sheet

MO.I



**MECHANICAL DEMOLITION FLOOR PLAN**  
SCALE: 1/4"=1'-0"

**DEMOLITION NOTES**

- ① CONTRACTOR IS RESPONSIBLE FOR OBTAINING ALL NECESSARY PERMITS AND PAYING ALL APPLICABLE FEES.
- ② DISPOSAL OF EQUIPMENT AND MATERIALS REQUIRED TO BE REMOVED SHALL BE THE RESPONSIBILITY OF THE CONTRACTOR PERFORMING THE WORK.
- ③ DE-ENERGIZE ALL ELECTRICAL CIRCUITS RELATED TO EQUIPMENT THAT WILL BE MOVED OR REMOVED PRIOR TO STARTING WORK. DE-ENERGIZED CIRCUITS SHALL BE PROTECTED WITH LOCKING DEVICES USING APPROPRIATE WARNING LABELS.
- ④ MECHANICAL CONTRACTOR SHALL BE RESPONSIBLE FOR PATCHING ROOF AFTER REMOVAL OF EXISTING MECHANICAL EQUIPMENT. SEE ARCHITECTURAL DRAWINGS FOR ROOF PATCHING REQUIREMENTS.
- ⑤ EXCEPT WHERE NOTED, EXISTING REMOTE TEMPERATURE &/OR HUMIDITY SENSORS TO REMAIN. IF DURING RENOVATION PURPOSES CONTROLS SHALL BE TAKEN DOWN, MECHANICAL CONTRACTOR SHALL BE RESPONSIBLE FOR REINSTALLING AND TO PROVIDE ANY ADDITIONAL WIRING NEEDED. VERIFY EXISTING UNIT CONTROLS ARE IN GOOD WORKING ORDER. IF NOT, CONTACT CHICK-FIL-A CONSTRUCTION MANAGER.
- ⑥ MECHANICAL CONTRACTOR SHALL REPLACE FILTERS FOR ALL RTUS AT END OF PROJECT AND PRIOR TO REOPENING. MC TO PROVIDE PROPOSAL TO FACILITIES MANAGER, CONSTRUCTION MANAGER, AND OPERATOR TO CORRECT EXISTING RTU PUNCH ITEMS IDENTIFIED BY HALTON.
- ⑦ CONTRACTOR SHALL INDICATE SALVAGE VALUE IN BID FOR ROOFTOP UNITS BEING REPLACED.

**DEMOLITION LEGEND**

	EXISTING EQUIPMENT, DUCT, AIR DEVICE ETC. TO REMAIN INTACT
	EQUIPMENT, DUCT, AIR DEVICE ETC. TO BE DEMOLISHED

**DEMOLITION KEY NOTES**

- ① DETACH AND DEMOLISH EXISTING AIR DEVICE. SECURE DUCT ABOVE CEILING GRID FOR RE-CONNECTION. SEE SHEET M.I FOR NEW CONNECTION.
- ② EXISTING ACH#1 TO BE REPLACED. DETACH CONTROLS, GAS, AND ELECTRICAL CONNECTIONS FROM EXISTING ACH#1 AND DEMOLISH UNIT. COVER CURB WEATHER-TIGHT FOR RE-USE. SEE SHEET M.I FOR FURTHER INFORMATION.

# I. SECTION C15000 - MECHANICAL SPECIFICATIONS

## PART I - GENERAL

### 1.01 SCOPE

- A. IT IS THE RESPONSIBILITY OF CONTRACTOR TO READ ALL SPECIFICATIONS AND CONSULT ALL DRAWINGS WHICH MAY AFFECT THE INSTALLATION AND COORDINATION OF HIS WORK WITH OTHER TRADES. CONTRACTOR SHALL COORDINATE AND MAKE MINOR ADJUSTMENTS IN LOCATION OF EQUIPMENT AND MATERIALS AS NECESSARY TO SECURE COORDINATION.
- B. COMPLETED INSTALLATION SHALL CONFORM TO ALL APPLICABLE FEDERAL, STATE AND LOCAL CODES AND ORDINANCES, INCLUDING BUT NOT LIMITED TO THE LATEST APPROVED EDITIONS OF NFPA-96, NFPA-90A, NFPA-54, SMACNA, ASHRAE 90.1 AND ASHRAE 62.
- C. SYSTEM LAYOUT IS SCHEMATIC AND EXACT LOCATIONS SHALL BE DETERMINED BY STRUCTURAL CONDITIONS, COORDINATION WITH OTHER TRADES, COORDINATION WITH FINISHES AND OTHER CONDITIONS. STRUCTURAL SUPPORTS SHALL NOT BE CUT OR ALTERED TO ASSURE FIT OF HVAC SYSTEM. TEN FOOT CLEARANCE SHALL BE MAINTAINED BETWEEN OUTSIDE AIR INTAKES AND EXHAUST FANS AND PLUMBING VENT TERMINALS.
- D. CONTRACTOR SHALL BE RESPONSIBLE FOR ALL DEFECTS, REPAIRS AND REPLACEMENTS IN MATERIALS AND WORKMANSHIP FOR A PERIOD OF ONE (1) YEAR AFTER FINAL PAYMENT IS APPROVED. CONTRACTOR SHALL HONOR FACTORY WARRANTIES ON ALL EQUIPMENT PROVIDED AS PART OF THIS SYSTEM.
- E. UPON COMPLETION OF PROJECT, ALL SYSTEM EQUIPMENT AND MATERIALS SHALL BE IN NEW, CLEAN CONDITION WITH ALL DAMAGE RESTORED TO CONDITION ACCEPTABLE TO THE OWNERS REPRESENTATIVE. ALL EQUIPMENT, COMPONENTS AND DUCTWORK SHALL BE INSPECTED AND THOROUGHLY CLEANED, READY FOR USE. AT COMPLETION OF JOB, ALL MISCELLANEOUS TOOLS, SCAFFOLDING, SURPLUS MATERIALS, RUBBISH AND DEBRIS SHALL BE REMOVED BY CONTRACTOR.
- F. CONTRACTOR SHALL PROVIDE TWO SETS OF 2" MERV 8 OR HIGHER THROW AWAY TYPE FILTERS. A CLEAN SET SHALL BE PROVIDED PRIOR TO TEST AND BALANCE AND AGAIN PRIOR TO OPENING.

## PART II - PRODUCTS

### 2.01 HEATING AND COOLING EQUIPMENT (C15730)

- A. FURNISH AND INSTALL R-410A ROOFTOP SINGLE PACKAGE COMBINATION ELECTRIC COOLING AND NATURAL GAS FIRED HEATING UNITS BY LENNOX AS SHOWN ON DRAWINGS. EQUIPMENT SHALL BE ARI CERTIFIED AND A.G.A. AND U.L. LISTED.
- B. ACCESSORIES SHALL INCLUDE LOW AND HIGH PRESSURE SAFETIES, CRANK CASE HEATER, OVERCURRENT AND OVERTEMPERATURE SAFETY, COMPRESSOR VIBRATION ISOLATORS, FILTER DRIERS, REFRIGERANT SERVICE VALVES, COIL HAIL GUARDS WHERE SCHEDULED, CONVENIENCE OUTLETS FACTORY INSTALLED ON SCHEDULED UNITS, UNIT MOUNTED NON-FUSED DISCONNECTS, LOW AMBIENT OPERATION DOWN TO 30 DEGREES F AND EVAPORATOR FREEZE STAT.
- C. COMPRESSORS SHALL BE FULLY HERMETIC SCROLL TYPE WITH INTERNAL VIBRATION ISOLATORS. COMPRESSORS SHALL BE PROVIDED WITH A MINIMUM FIVE (5) YEAR FULL WARRANTY.
- D. THE UNIT HEAT EXCHANGERS SHALL BE STEEL WITH ALUMINIZED STEEL COATING. HEATING CONTROLS SHALL CONSIST OF REDUNDANT GAS VALVES, INTERMITTENT PILOT WITH ELECTRONIC SPARK OR HOT PLATE IGNITION SYSTEM, COMBUSTION/EXHAUST FAN PROTECTED BY CENTRIFUGAL SWITCHES, HEAT LIMIT SWITCHES, TIME-DELAY RELAY, FLAME, AND PILOT SENSORS. ALL UNITS SHALL BE CAPABLE OF TWO STAGES OF HEAT. HEAT EXCHANGES SHALL HAVE A TEN (10) YEAR WARRANTY. BURNERS SHALL BE ALUMINIZED IN-SHOT TYPE. THE DRAFT MOTOR SHALL BE MONITORED BY THE CONTROL SYSTEM.
- E. CHICK-FIL-A MAINTAINS A NATIONAL ACCOUNT FOR EQUIPMENT WITH LENNOX CORPORATION. PRICING FOR THE EQUIPMENT HAS BEEN ESTABLISHED IN ADVANCE. CONTACT LENNOX NATIONAL ACCOUNTS AT 972-497-6260 (OR BY FAX AT 972-497-5112) FOR PRICING, ORDERING AND AVAILABILITY.

### 2.02 DUCTWORK (C15735) (SEE DWG M2.1 FOR ADDITIONAL GREASE DUCT SYSTEM REQ.)

- A. ACCEPTABLE MANUFACTURERS OF INSULATION ARE MANVILLE, OWENS CORNING OR KNAUF.
- B. ALL DUCTWORK SHALL BE SHEET METAL, UNLESS NOTED OTHERWISE (U.N.O.).
- C. DUCT DIMENSIONS SHOWN ARE INSIDE CLEAR DIMENSIONS, U.N.O.
- D. CONSTRUCTION OF DUCTWORK SHALL MEET SMACNA 1" W.C. PRESSURE CLASS STANDARD AND RECOMMENDATIONS. SMACNA SHALL BE FOLLOWED WITH RESPECT TO GAGE THICKNESS, JOINTS, REINFORCING, CONSTRUCTION, INSTALLATION AND SUPPORT FOR PRESSURE CLASS STATED. ALL TRANSVERSE JOINTS IN RECTANGULAR AND ROUND DUCT SHALL BE SEALED PER SMACNA SEAL CLASS C WITH U.L. DUCT MASTIC SEALANT APPROVED FOR INTENDED USE. DUCT TAPE IS NOT AN ACCEPTABLE SUBSTITUTE FOR MASTIC UNLESS EQUAL TO HARDCAST FOIL-GRIP 1402 BUTYL RUBBER ADHESIVE TAPE.
- E. ALL DUCT INSULATION SHALL MEET MINIMUM R-VALUE REQUIRED BY ASHRAE 90.1 LATEST EDITION. ALL DUCT WRAP SHALL BE MINIMUM 2" THICK, 3/4 PCF AND 5.6 R-VALUE INSTALLED WITH EITHER A VAPOR BARRIER WITH MAXIMUM PERMEANCE 0.05 OR A MINIMUM 2 MIL ALUMINUM REINFORCED FOIL/KRAFT FACING.
- F. ALL DUCT DROPS FROM THE ROOFTOP UNITS SHALL BE EXTERNALLY INSULATED.
- G. SUPPLY AND RETURN AIR DUCTWORK SERVING ALL AREAS SHALL BE EXTERNALLY INSULATED.
- H. ALL AIR CONVEYANCE COMPONENTS SUCH AS, BUT NOT LIMITED TO DUCT, DUCT PLENUMS, GRILLES/DIFFUSERS, BACK PANS, AND BOOTS SHALL BE INSULATED. INSULATION TYPE IS COVERED ELSEWHERE IN THIS SPECIFICATION.
- I. RESTROOM RECTANGULAR EXHAUST AIR DUCTWORK SHALL BE LINED WITH 1" THICK, 1-1/2 PCF INSULATION.
- J. TRUNK DUCTS SHALL BE ISOLATED FROM UNIT VIBRATION WITH THE USE OF NFPA AND U.L. APPROVED FLEXIBLE CONNECTORS INSTALLED AT THE TOP OF BOTH SUPPLY AND RETURN DROPS.
- K. INSULATED FLEXIBLE DUCT MAY BE UTILIZED FOR RUNOUTS TO GRILLES AND DIFFUSERS ONLY IN THE HORIZONTAL POSITION AND IN MAXIMUM LENGTHS OF 4'-0", NO EXCEPTIONS. SEE TAKE-OFF DETAIL ON DRAWING M3.1.
- L. CONSTRUCTION OF FLEXIBLE DUCTWORK SHALL INCLUDE SPIRAL METAL HELIX BONDED TO A POLYESTER CORE, FIBERGLASS INSULATION WITH POLYETHYLENE OR MYLAR VAPOR BARRIER. ALL COMPONENTS SHALL HAVE APPROPRIATE U.L. APPROVAL AND SHALL BE EQUIVALENT TO THERMAFLEX MKE.
- M. FLEXIBLE DUCT SHALL BE INSTALLED PER THE "ADC FLEXIBLE DUCT PERFORMANCE AND INSTALLATION STANDARDS, 4TH ED" USING FOIL TAPE AND DRAWBAND ON THE INNER CORE AND TAPE OR DRAWBAND ON THE OUTER JACKET.
- N. DUCT TAPE SHALL BE EQUAL TO FASSON 181-B FX, 2-1/2" WIDE.
- O. SINGLE THICKNESS TURNING VANES SHALL BE INSTALLED AT 90 DEGREE TURNS IN SUPPLY DUCTWORK WHERE ANY ONE DIMENSION IS GREATER THAN 12".
- P. RADIUSSED ELBOWS MAY BE SUBSTITUTED FOR 90 DEGREE ELBOWS AT THE DISCRETION OF THE CONTRACTOR. CENTERLINE RADIUS EQUAL TO: R=W PER FIGURE NO. 2-2 IN SMACNA HVAC DUCT CONSTRUCTION STANDARDS.
- Q. EXTERNAL INSULATION ON BOTTOM OF DUCTS 24" OR WIDER SHALL BE SUPPORTED WITH STICK PINS ON 18" CENTERS. STICK PIN WASHERS SHALL BE COVERED WITH DUCT TAPE OR MASTIC.

### 2.03 CONTROLS (C15735)

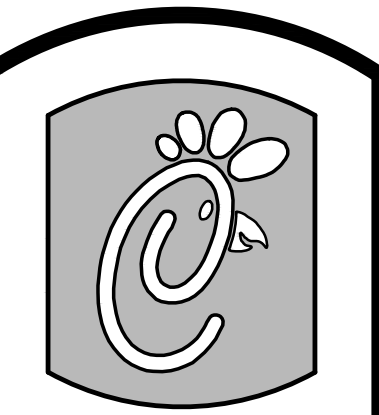
- A. SYSTEMS SHALL BE COMPLETE WITH CONNECTIONS TO CFA-500 TEMPERATURE CONTROL PANEL AS MANUFACTURED BY SUNCOAST ENVIRONMENTAL CONTROLS (S.E.C.) (PH: 877-544-6679). THE PANEL IS EXISTING. CONTROL WIRING TERMINATIONS ARE BY THE MECHANICAL CONTRACTOR.
- B. THE SMOKE DETECTORS SHALL BE FACTORY INSTALLED AND WIRED BY THE ROOFTOP UNIT MANUFACTURER. SMOKE DETECTOR FOR AHU#1 SHALL BE PROVIDED BY SUNCOAST ENVIRONMENTAL CONTROLS AND FIELD INSTALLED BY THE MECHANICAL CONTRACTOR.
- C. A FACTORY INSTALLED SMOKE DETECTOR (FIELD INSTALLED FOR AHU#1) IN THE RETURN AIR SECTION OF EACH AIR CONDITIONING UNIT SHALL STOP THE INDOOR FAN AND CLOSE THE OUTSIDE AIR DAMPER IN THE EVENT OF EXCESSIVE TEMPERATURE OR SMOKE. SMOKE DETECTOR SHALL BE LOCATED PRIOR TO ANY EXHAUST FROM THE BUILDING OR MIXING WITH FRESH AIR MAKE-UP. UPON DETECTION, THE SYSTEM SHALL NOT RESTART UNTIL THE DEVICE IS MANUALLY RESET. DEVICES SHALL BE LOCATED WHERE THEY CAN BE EASILY ACCESSED AND WHERE CLEAR OF FILTERS.
- D. CHICK-FIL-A HAS A NATIONAL ACCOUNT WITH SUNCOAST ENVIRONMENTAL CONTROLS FOR THE SMOKE DETECTOR TEST/RESET ANNUNCIATOR STATIONS. THE TEST/RESET STATIONS WILL BE PURCHASED BY THE MECHANICAL CONTRACTOR AS A PART OF A NATIONAL ACCOUNT PACKAGE AND INSTALLED BY THE MECHANICAL CONTRACTOR.
- E. THE REMOTE TEST/RESET ANNUNCIATORS SHALL BE PROVIDED BY THE MECHANICAL CONTRACTOR AND INSTALLED BY THE MECHANICAL CONTRACTOR. INSTALLATION BY MECHANICAL SHALL INCLUDE MOUNTING OF THE ANNUNCIATORS AND ALL WIRING FROM EACH DEVICE TO THE RTU. PROVIDE A JUNCTION BOX IN THE WALL WITH 1/2" CONDUIT STUBBED UP ABOVE THE CEILING FOR EACH REMOTE TEST STATION AS SHOWN ON THE ELECTRICAL PLANS. ANNUNCIATOR SHALL BE SUNCOAST CONTROLS REMOTE TEST/RESET STATION WITH POWER LED, TROUBLE LED, ALARM LED, 90DB HORN AND TEST/RESET BUTTON.
- F. THE RESTROOM FAN SHALL BE INTERLOCKED TO THE LIGHTS SERVING THE MEN AND WOMEN'S RESTROOMS. THE HOOD FANS SHALL BE CONTROLLED VIA THE SUNCOAST CFA-500 CONTROL PANEL. WIRING, RELAYS AND SWITCHES FOR CONTROL OF ALL FANS ARE BY ELECTRICAL CONTRACTOR.
- G. LENNOX UNITS - FOR AHU#1 SUNCOAST WILL PROVIDE A VENSTAR T2700 TO BE FIELD WIRED AND INTERLOCKED WITH THE EXISTING CFA-500 TEMP CONTROL PANEL. MECHANICAL CONTRACTOR SHALL INSTALL ALL WIRING BETWEEN THE THERMOSTAT, AIR HANDLING UNIT, AND ENHANCED DEHUMIDIFICATION ACCESSORY.
- H. MECHANICAL CONTRACTOR SHALL INSTALL CONTROL WIRING IN 1/2" CONDUIT WHERE REQUIRED BY CODE. WHERE NOT REQUIRED TO BE IN CONDUIT, ALL WIRING SHALL BE RUN PARALLEL TO STRUCTURAL MEMBERS OR PERPENDICULAR WITH NO DIAGONAL ROUTING. ALL WIRING SHALL BE SECURED TO THE FRAMING TO PREVENT SAGGING IN RUNS. WIRING TO ROOFTOP UNITS SHALL BE ROUTED THROUGH THE FACTORY THRU-BASE FITTING IN THE UNIT BASE. NO SPLICING OF WIRING WILL BE ACCEPTED. ALL WIRING ABOVE THE ROOF SHALL BE INSTALLED IN EXTERIOR GRADE FLEXIBLE CONDUIT. ALL CONTROL WIRING AND CONTROL WIRING CONDUIT SHALL BE FURNISHED AND INSTALLED BY THE MECHANICAL CONTRACTOR. WIRING SHALL BE INSTALLED IN ACCORDANCE WITH LATEST EDITION OF NEC. ALL LOW VOLTAGE CONTROL WIRING SHALL BE NO LESS THAN 18 AWG MIN. CONTROL WIRING CONDUCTORS SHALL BE SIZED TO ACCOUNT FOR LOAD AND LENGTH OF RUN TO ALLOW SUFFICIENT VOLTAGE AVAILABLE AT CONTROLLED DEVICE TO OPERATE THE SYSTEM RELIABLY.

## PART III - EXECUTION

### 3.01 SCOPE

- A. FURNISH AND INSTALL SYSTEM IN ACCORDANCE WITH REFERENCED STANDARDS, APPLICABLE CODES, MANUFACTURER'S RECOMMENDATIONS AND AS INDICATED ON DRAWINGS.
- B. OWNER SHALL TEST AND BALANCE MECHANICAL SYSTEM IN ACCORDANCE WITH NCI OR AABC STANDARDS TO ASSURE CONFORMANCE WITH DESIGN. G.C. WILL MAKE MECHANICAL CONTRACTOR AVAILABLE DURING TEST AND BALANCE TO ASSIST TESTING AGENCY AND TO MAKE CORRECTIONS IMMEDIATELY NECESSARY. CONTRACTOR SHALL CORRECT ITEMS ON WRITTEN TEST AND BALANCE REPORT.
- C. CONTRACTOR SHALL INSTRUCT THE OWNER'S REPRESENTATIVE IN ALL MATTERS PERTAINING TO THE PROPER MAINTENANCE OF EQUIPMENT FURNISHED UNDER THIS CONTRACT THROUGH DEMONSTRATION AND EXPLANATION OF OPERATING & MAINTENANCE MANUALS.
- D. CONTRACTOR SHALL PROVIDE A "SAMPLE MAINTENANCE PROPOSAL" TO THE OWNER'S REPRESENTATIVE IN ALL MATTERS PERTAINING TO THE PROPER MAINTENANCE OF EQUIPMENT FURNISHED UNDER THIS CONTRACT.
- E. CONTRACTOR SHALL COMPLETE A/C EQUIPMENT STARTUP DOCUMENTATION PROVIDED BY OWNER.

NATIONAL ACCOUNTS	
1.	LENNOX EQUIPMENT - CONTACT LENNOX NATIONAL ACCOUNTS AT 972-497-6260 (OR BY FAX AT 972-497-5112) FOR PRICING, ORDERING AND AVAILABILITY. LENNOX EQUIPMENT NOT PURCHASED THRU LENNOX NATIONAL ACCOUNTS WILL NOT BE ACCEPTED.
2.	LOREN COOK FAN AND CURB PACKAGE - THE MECHANICAL CONTRACTOR IS REQUIRED TO PURCHASE THE FAN/CURB PACKAGE DIRECTLY FROM TOM BARROW COMPANY. CONTACT MR. SCOTT GEORGE AT 404-351-1010 FOR PRICING AND AVAILABILITY. FANS AND CURBS NOT PURCHASED THRU TOM BARROW COMPANY WILL NOT BE ACCEPTED.
3.	PRICE AIR DEVICES - THE MECHANICAL CONTRACTOR IS REQUIRED TO PURCHASE THE AIR DEVICES DIRECTLY FROM TOM BARROW COMPANY. CONTACT MR. SCOTT GEORGE AT 404-351-1010 FOR PRICING AND AVAILABILITY. AIR DEVICES NOT PURCHASED THRU TOM BARROW COMPANY WILL NOT BE ACCEPTED.
4.	SUNCOAST ENVIRONMENTAL CONTROLS - THE TEST/RESET STATIONS AND THERMOSTAT FOR AHU#1 WILL BE PURCHASED AND PROVIDED BY THE MECHANICAL CONTRACTOR AS A PART OF A NATIONAL ACCOUNT PACKAGE. SEE PART II PARAGRAPH 3A, 3D, AND 3E OF THE MECHANICAL SPECIFICATIONS FOR MORE INFORMATION.
5.	HALTON HOODS - CHICK-FIL-A WILL PURCHASE AND PROVIDE THE HOODS FOR INSTALLATION BY THE MECHANICAL CONTRACTOR. THE MECHANICAL CONTRACTOR SHALL BE RESPONSIBLE FOR RECEIVING THE HOODS. CONTACT HALTON CO. AT 270-237-5600 FOR MORE INFO.
6.	ROYAL METAL START COLLARS - THE MECHANICAL CONTRACTOR IS REQUIRED TO PURCHASE THE START COLLARS DIRECTLY FROM TOM BARROW COMPANY. CONTACT MR. SCOTT GEORGE AT 404-351-1010 FOR PRICING AND AVAILABILITY. START COLLARS NOT PURCHASED THRU TOM BARROW COMPANY WILL NOT BE ACCEPTED.



5200 Buffington Rd.  
Atlanta Georgia,  
30349-2998

Revisions:  
Mark Date By

△

Mark Date By

△

Mark Date By

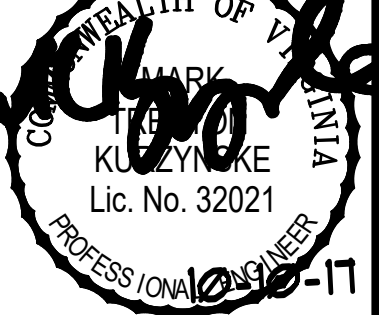
△

Mark Date By

△ 5 06/12/17

ELECTRICAL &

PLUMBING REVISIONS



Kurtzyske & Associates  
CONSULTING ENGINEERS  
2900 Lebanon Pike, Ste 201  
Nashville, Tennessee 37214  
Telephone: (615) 255-5203  
Fax: (615) 255-5207  
Email: mail@kurtzyske.com

STORE

CFA #2240  
Mercury Boulevard FSU  
110 Market Place Dr.  
Hampton, VA 23666

SHEET TITLE  
MECHANICAL  
SPECIFICATIONS

PROTOTYPE S06C-R

Job No. : 1615Z.HFR

Store : 2240

Date : 02.14.17

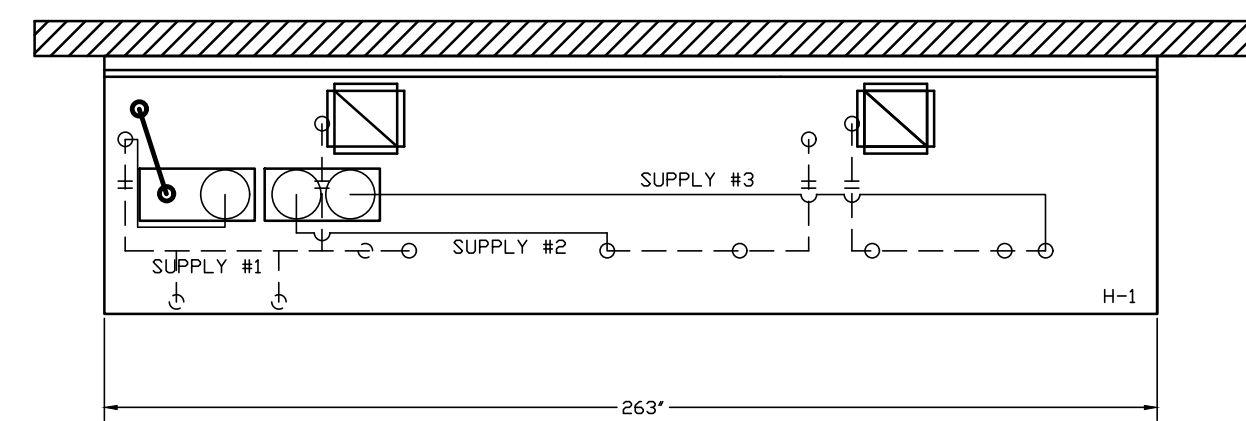
Drawn By : AK

Checked By : MK

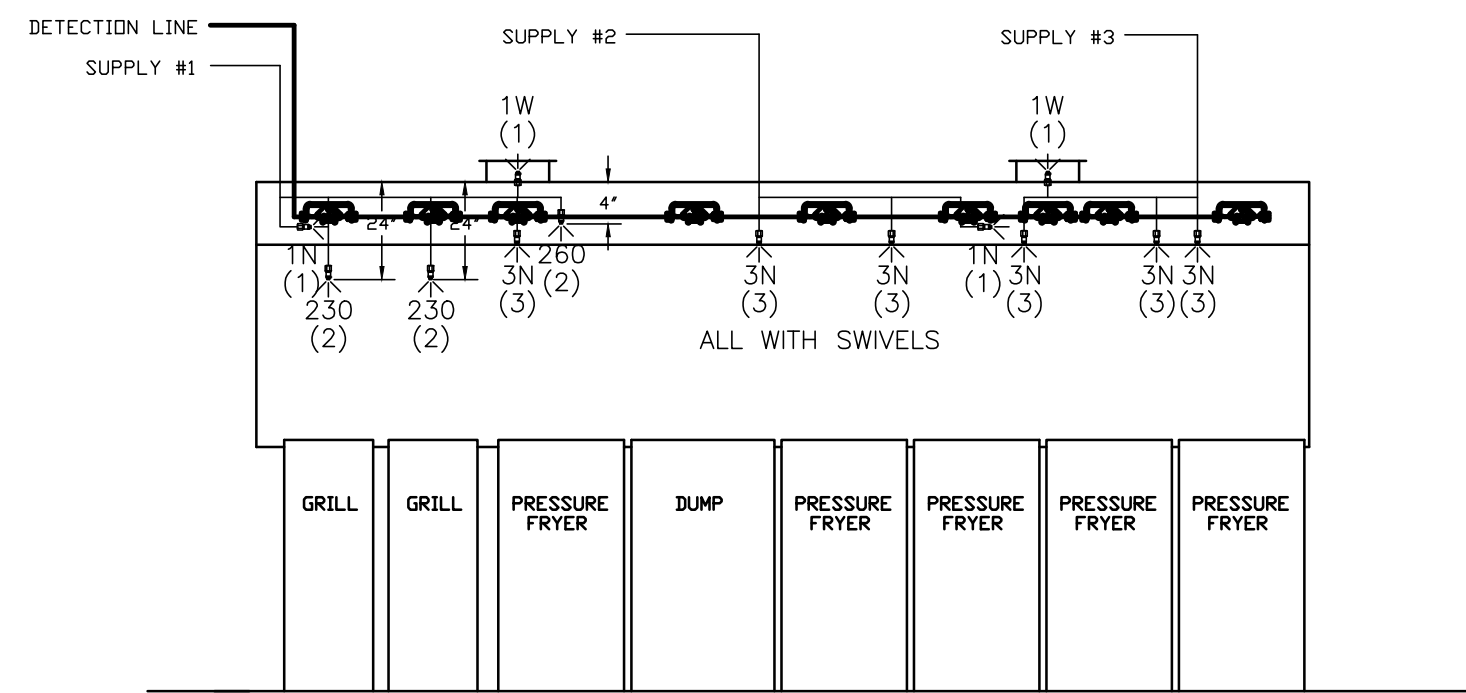
Sheet

M5.I

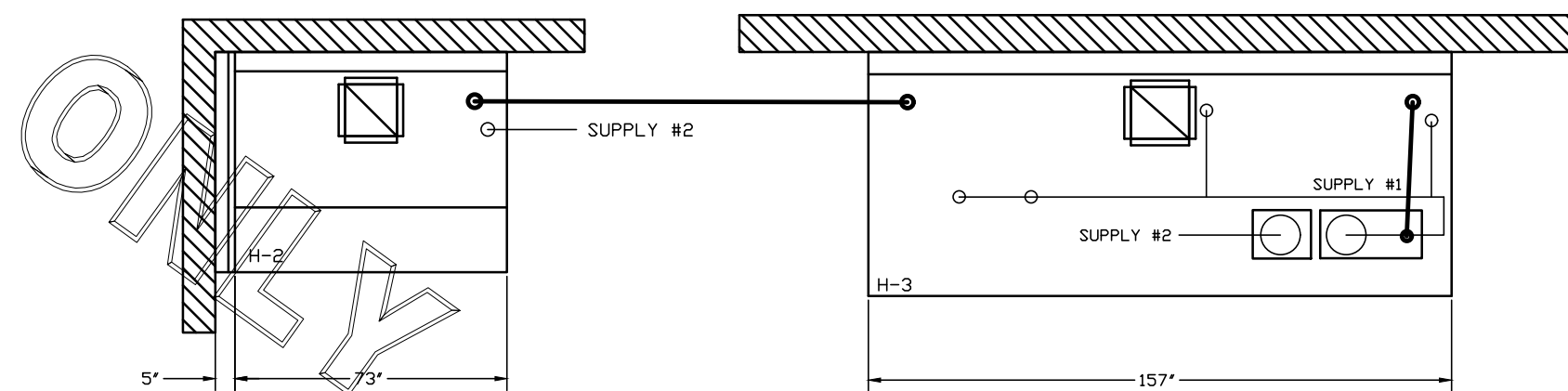
FOR REFERENCE ONLY



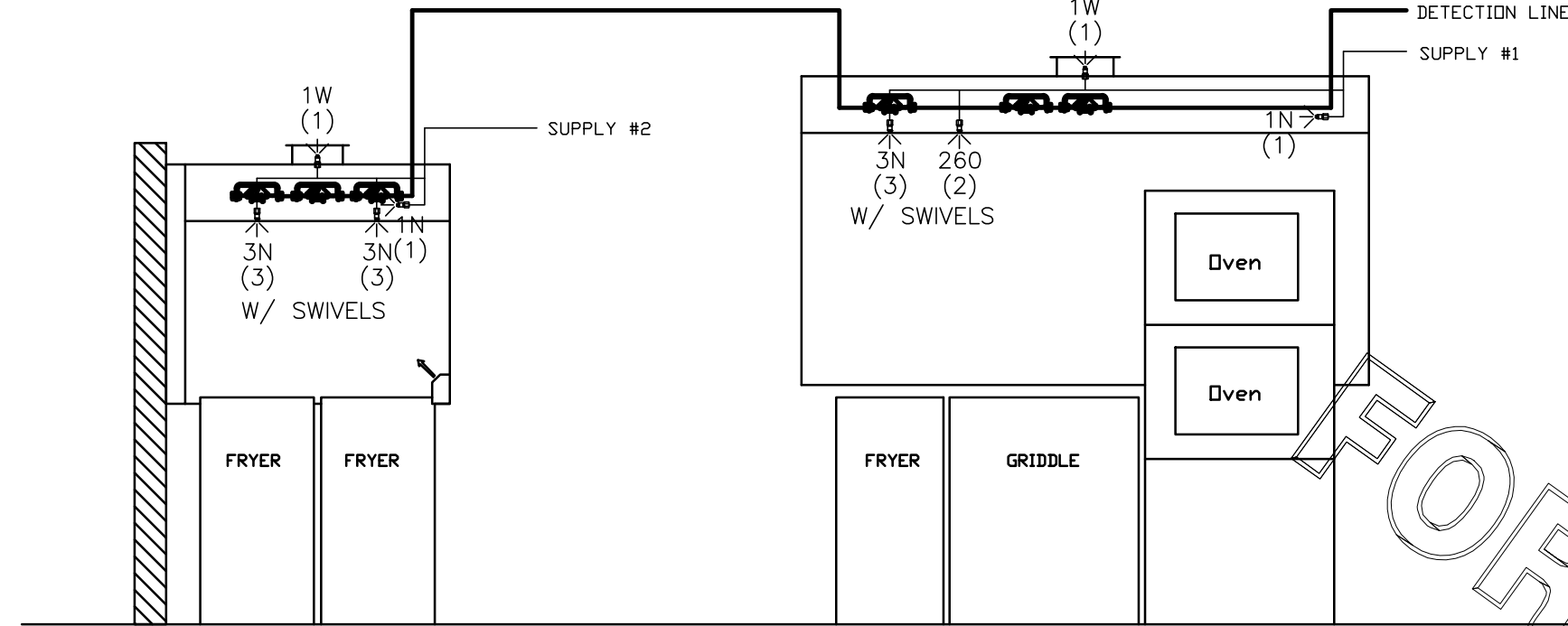
- ANSUL R-102 FIRE SYSTEM
- (1) REGULATED RELEASE
  - (2) EXTRA MICRO SWITCH ASSEMBLIES (MOUNTED IN REG. REL.)
  - (3) DOUBLE TANK ENCLOSURE
  - (4) 3 GALLON TANKS
- A) 9 GALLON SYSTEM (3 TANKS) MOUNTED ON HOOD H-1 (FOR HOOD H-1)
- B) 3/8" BLACK IRON PIPING W/ 3/8" S.S. APPLIANCE DROPS



ANSUL R-102 FIRE SYSTEM LAYOUT



- ANSUL R-102 FIRE SYSTEM
- (1) REGULATED RELEASE
  - (2) EXTRA MICRO SWITCH ASSEMBLIES (MOUNTED IN REG. REL.)
  - (3) SINGLE TANK ENCLOSURE
  - (4) 3 GALLON TANK
- A) 6 GALLON SYSTEM (2 TANKS) MOUNTED ON HOOD H-2 (FOR HOOD H-2 & H-3)
- B) 3/8" BLACK IRON PIPING W/ 3/8" S.S. APPLIANCE DROPS



ANSUL R-102 FIRE SYSTEM LAYOUT

FUSIBLE LINK RATINGS

ITEM	TEMP
OPEN FRYERS	450°
2 BURNER / FLAT TOP	450°
PRESSURE FRYERS	450°
GRILL	450°
EXHAUST COLLARS	450°

ANSUL R-102 FIRE SYSTEM NOTES  
THREE TANK SYSTEM MOUNTED ON TOP OF (H-1)  
MAXIMUM FLOW POINTS = 33

ANSUL R-102 FIRE SYSTEM NOTES  
TWO TANK SYSTEM MOUNTED ON TOP OF (H-3)  
MAXIMUM FLOW POINTS = 22

ITEM #	QTY	DESCRIPTION	FLOW PTS (TOTAL)
1W	4	DUCT NOZZLES	4
1N	4	PLENUM NOZZLES	4
230	2	APPLIANCE NOZZLES	4
3N	9	APPLIANCE NOZZLES	27
260	2	APPLIANCE NOZZLES	4

TOTAL FLOW POINTS - 43

ITEM #	QTY	DESCRIPTION
#200	13	SERIES DETECTORS W/ FUSIBLE LINKS
#201	2	TERMINAL DETECTOR W/ FUSIBLE LINKS
#202	2	REGULATED RELEASE W/ DOUBLE POLE MICRO SWITCH
#203	5	3 GALLON TANKS
#204	1	SINGLE TANK ENCLOSURE
#205	1	DOUBLE TANK ENCLOSURE
#206	2	REMOTE PULL STATION

ANSUL R-102 FIRE SYSTEM  
UL LISTED PER STD LATEST STD 300

- FINAL INSTALLATION IS TO BE MADE IN ACCORDANCE WITH ALL APPLICABLE CODES
- ALL ELECTRICAL COMPONENTS FOR EQUIPMENT SHUT DOWN TO BE PROVIDED BY THE ELECTRICIAN. MICRO-SWITCH INSTALLED IN REGULATED RELEASE BY ANSUL INSTALLER
- REMOTE PULL STATION LOCATED PER MECHANICAL DRAWINGS

THIS DRAWING MUST BE CHECKED, SIGNED AND RETURNED TO THE APPROPRIATE FACTORY. PLEASE REFER TO THE FOLLOWING:

- ALL DIMENSIONAL INFORMATION, MOUNTING POSITIONS
- THE LOCATION AND TYPE OF COOKING EQUIPMENT.

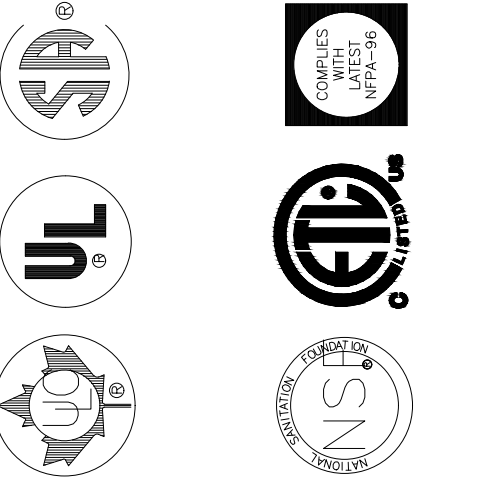
NOTE TO APPROVER  
ANY CHANGES IN COOKING EQUIPMENT SUCH AS INCREASED ENERGY INPUTS OR EQUIPMENT POSITION MAY AFFECT EXHAUST AIRFLOW. HALTON MUST BE NOTIFIED IF ANY OF THESE CHANGES OCCUR. A RECALCULATION EXHAUST AIRFLOW MAY BE REQUIRED.

REVISION AND RESUBMIT

APPROVED FOR FABRICATION

WITH NO CHANGES WITH CHANGES AS NOTED

APPROVED BY DATE



MAIL APPROVED DRAWINGS TO APPROPRIATE FACTORY BELOW. WEBSITE: WWW.HALTONCOMPANY.COM

HALTON CO. (USA)  
1021 BREWIK DRIVE  
SCOTTSDALE, AZ 85254  
1-202-237-5600

HALTON CO. (CANADA)  
1021 BREWIK PLACE  
MISSISSAUGA, ONT L4Y 1G4  
1-905-664-0301

REV.	BY	DATE	REVISION DESCRIPTION
1			
2			
3			
4			
5			
6			
7			

PROJECT: CHICK-FIL-A #2240  
MERCURY BLVD.  
LOCATION: HAMPTON, VA  
DRAWN BY: M.H. DATE: 02.06.17  
SCALE: NTS  
Halton Dwg: U17-109-02

