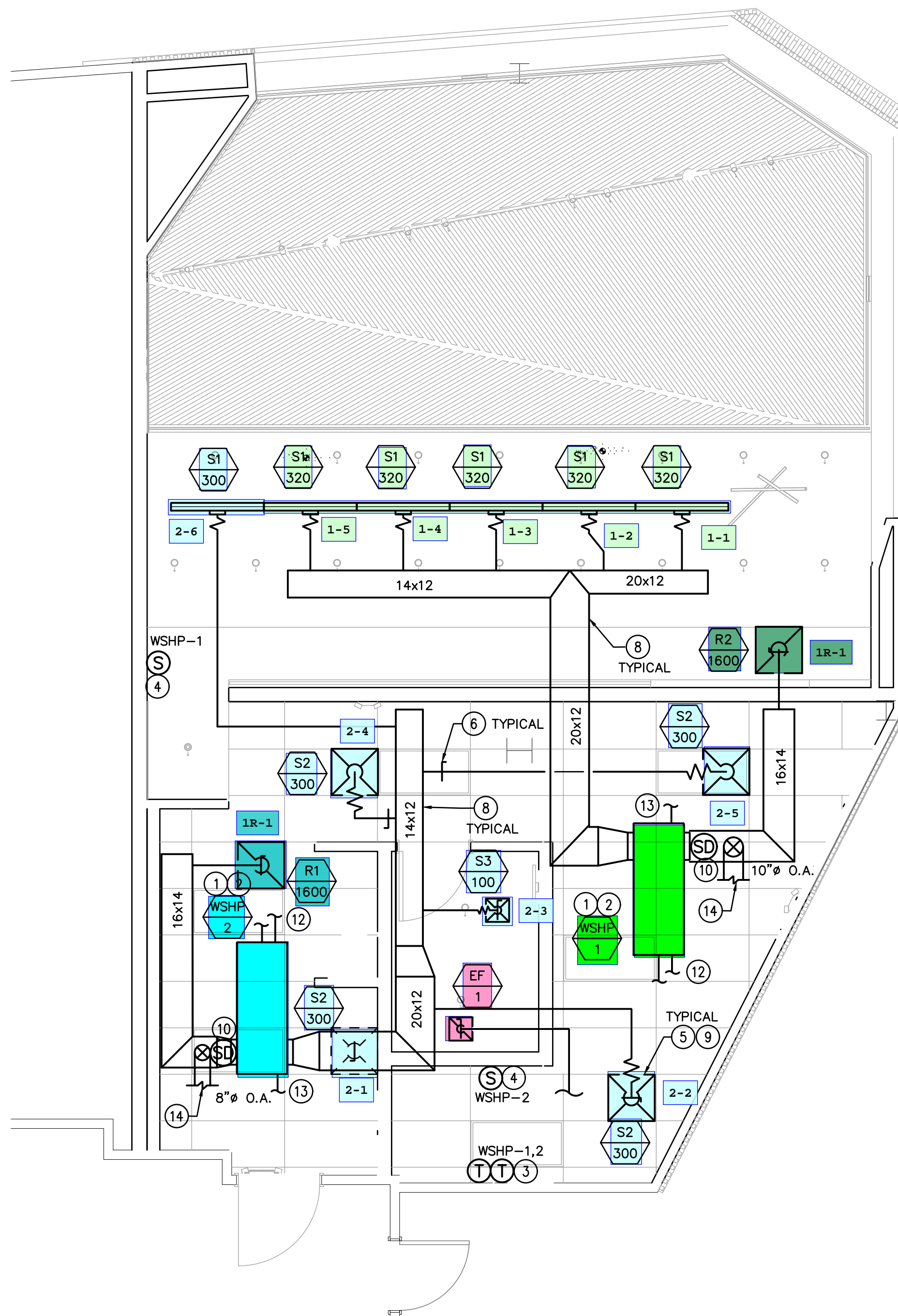


NOTES:

- 1 COORDINATE WITH ELECTRICAL CONTRACTOR FOR POWER CONNECTION TO ALL MECHANICAL EQUIPMENT.
- 2 SUPPLY/RETURN DUCT CONNECTIONS TO WSHP SHALL BE MADE FULL SIZE OF EQUIPMENT OPENING WITH FLEXIBLE DUCT CONNECTIONS AT UNIT AND THEN TRANSITION TO THE SIZES SHOWN.
- 3 WALL MOUNTED THERMOSTAT AT 48" AFF. MULTIPLE THERMOSTATS SHALL BE STACKED IN A VERTICAL CONFIGURATION WITH A MINIMUM 8" CLEARANCE BELOW EACH THERMOSTAT.
- 4 REMOTE TEMPERATURE SENSOR AT 60" AFF. MULTIPLE SENSORS TO BE AVERAGED.
- 5 DIFFUSERS AND RETURNS CENTERED IN CEILING TILE.
- 6 MANUAL BALANCE DAMPER. TYPICAL FOR ALL.
- 7 10"Ø EXHAUST DUCT TO LANDLORD EXHAUST DUCT. VERIFY EXACT ROUTING IN THE FIELD.
- 8 FURNISH AND INSTALL GALVANIZED STEEL DUCTWORK. SIZES SHOWN ARE SHEET METAL SIZES. DUCTWORK ABOVE CEILINGS SHALL BE INSULATED WITH 1-1/2" EXTERNAL WRAP. ALL DIMENSIONS ARE CLEAR INSIDE DIMENSIONS.
- 9 MAXIMUM OF 5'-0" FLEXIBLE DUCTWORK.
- 10 PROVIDE SMOKE DETECTOR MOUNTED IN SUPPLY DUCT TO MEET CODE REQUIREMENTS. DETECTOR SHALL DE-ENERGIZE UNIT SUPPLY FAN UPON DETECTION OF SMOKE.
- 11 3" PVC WATER HEATER INTAKE AND FLUE VENT. TERMINATE ON ROOF WITH CONCENTRIC VENT KIT.
- 12 CONNECT 1" CWS/CWR PIPING FROM LANDLORD CONDENSER WATER SYSTEM TO WSHP. VERIFY EXACT ROUTING IN THE FIELD. INSULATE TO BUILDING STANDARD.
- 13 PROVIDE NEW 1" TYPE L COPEPR CONDENSATE PIPING FROM WSHP. ROUTED TO DRAIN INDIRECTLY INTO MOP SINK. INSULATE PIPING WITH 1" ARMAFLEX (OR SIMILAR) INSULATION.
- 14 ROUTE OUTSIDE AIR DUCT TO EXISTING LANDLORD OUTSIDE AIR DUCT. VERIFY EXACT ROUTING IN THE FIELD.



1 MECHANICAL PLAN
Scale: 1/4" = 1'-0"



STARBUCKS
2401 UTAH AVENUE SOUTH
SEATTLE, WASHINGTON 98134
(206) 318-1575

THESE DRAWINGS AND THE PROJECT MANUAL ARE CONFIDENTIAL AND SHALL REMAIN THE SOLE PROPERTY OF STARBUCKS CORPORATION, WHICH IS THE OWNER OF THE COPYRIGHT IN THIS WORK. THEY SHALL NOT BE REPRODUCED (IN WHOLE OR IN PART), SHARED WITH THIRD PARTIES OR USED IN ANY MANNER ON OTHER PROJECTS OR EXTENSIONS TO THIS PROJECT WITHOUT THE PRIOR WRITTEN CONSENT OF STARBUCKS CORPORATION. THESE DRAWINGS AND SPECIFICATIONS ARE INTENDED TO EXPRESS DESIGN INTENT FOR A PROTOTYPICAL STARBUCKS STORE (WHICH IS SUBJECT TO CHANGE AT ANYTIME) AND DO NOT REFLECT ACTUAL SITE CONDITIONS. NEITHER PARTY SHALL HAVE ANY OBLIGATION NOR LIABILITY TO THE OTHER (EXCEPT STATED ABOVE) UNTIL A WRITTEN AGREEMENT IS FULLY EXECUTED BY BOTH PARTIES.

STARBUCKS TEMPLATE VERSION: I2023.10.23

ARCHITECT OF RECORD

THIS DRAWING IS A DESIGN DEVELOPMENT DOCUMENT. SITE SPECIFIC MODIFICATIONS MADE UNDER THE RESPONSIBLE CHARGE OF THE ARCHITECT AND/OR ENGINEER-OF-RECORD WILL BE REQUIRED PRIOR TO USING THIS DOCUMENT FOR BIDDING, PERMITTING, OR CONSTRUCTION.

05-13-2024

PROJECT NAME:
VALLEY FAIR LEVEL II

PROJECT ADDRESS:
2855 STEVENS CREEK BLVD
SAN JOSE, CA 95050

STORE #: 05913
PROJECT #: 08696-088
ISSUE DATE: 05-13-2024
DESIGN MANAGER: A. SECCHI
PRODUCTION DESIGNER: D. SCHAFER
CHECKED BY: M. LYNCH

Revision Schedule			
Rev	Date	By	Description

SHEET TITLE:
MECHANICAL PLAN

SCALE: AS SHOWN

SHEET NUMBER:

M101

CASE
Engineering Inc.
796 Merus Court
St. Louis, MO 63026
T 636.349.1600
F 636.349.1730