

(10'-6" BELOW MEZZ)

GE6-4 | GE6-4 | GE6-4 | GE6-4 | GE6-4 | GE6-4 | GE6-4 | GE6-4 | GE6-4 | GE6-4

DAIRY COOLER (NEW)  
48'-0" x 19'-0"  
110

AHU-8 27'-0" x 15'-6"  
GROCERY FREEZER (NEW)  
111

28'x16'  
MEAT COOLER (EXISTING)  
116

DA1 DA1 DA1 DA1 DA1 DA1 DA1 DA1 DA1 DA1 DA1 DA1 DA1 DA1 DA1 DA1 DA1

113

DA2-28 DA2-28 DA2-28 DA2-28 DA2-28 DA2-28 DA2-28 DA2-28 DA2-28 DA2-28 DA2-28 DA2-28 DA2-28 DA2-28 DA2-28 DA2-28 DA2-28

M5D12HX M5D12HX M5D12HX M5D12HX M5D12HX M5D12HX M5D12HX M5D12HX

GE63

GE63

(4)GE63C

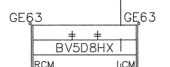
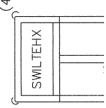
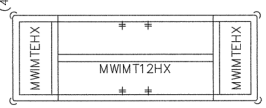
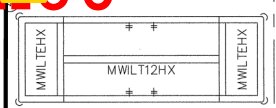
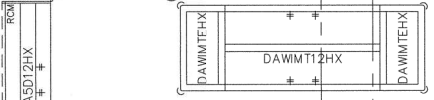
DAIRY

32x50

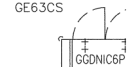
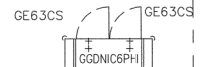
(4)GE63C

MEAT

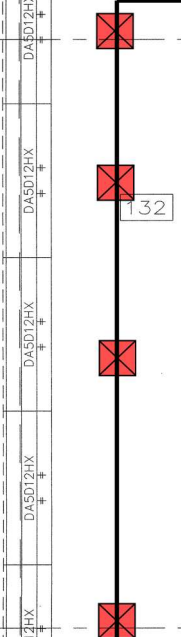
(4)GE63C



G50-4 G50-4 G50-4 G50-4 G50-4 G50-4



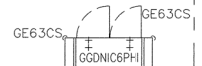
12x20



132

132

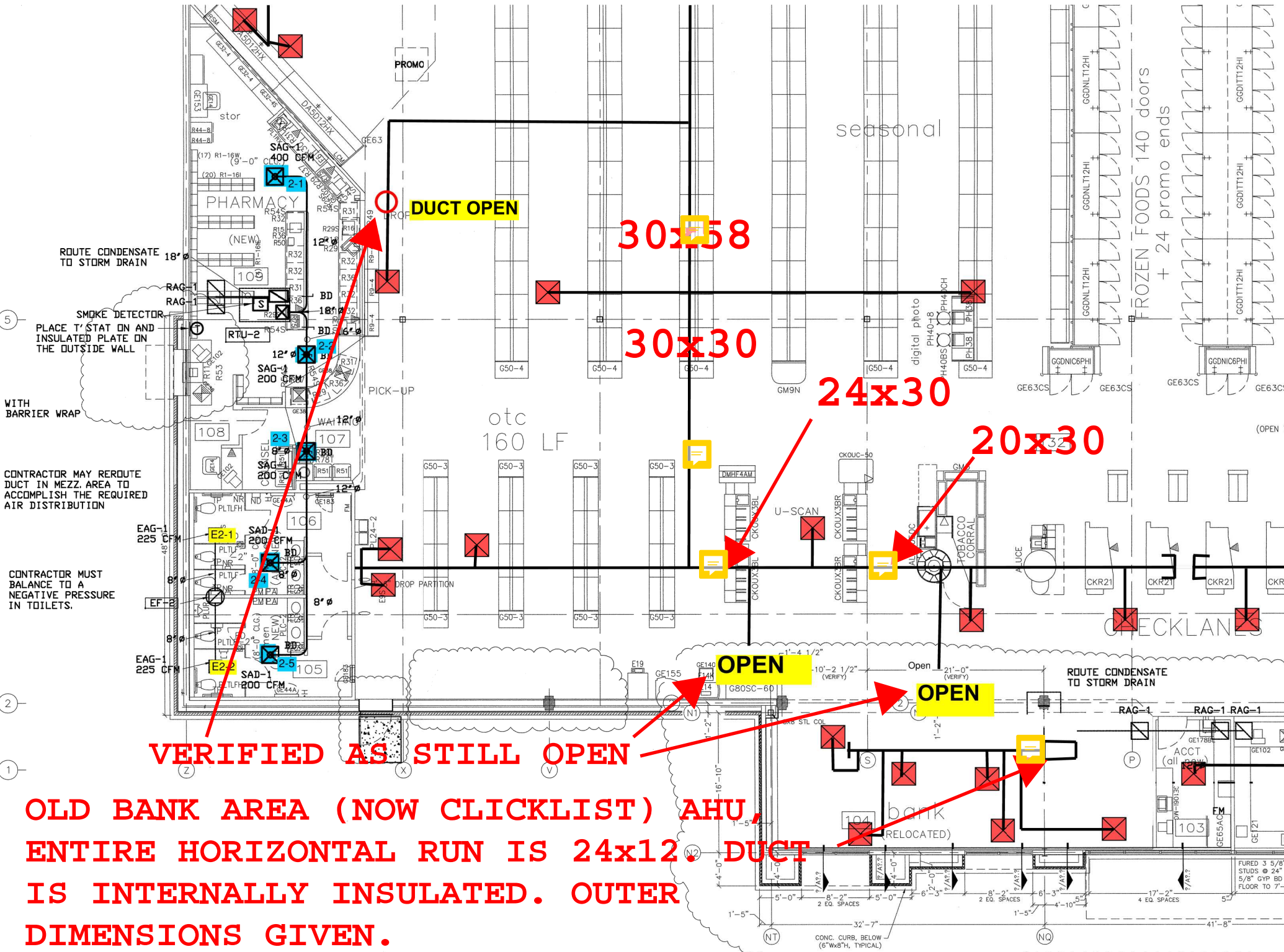
G50-4 G50-4 G50-4 G50-4 G50-4 G50-4



30x58

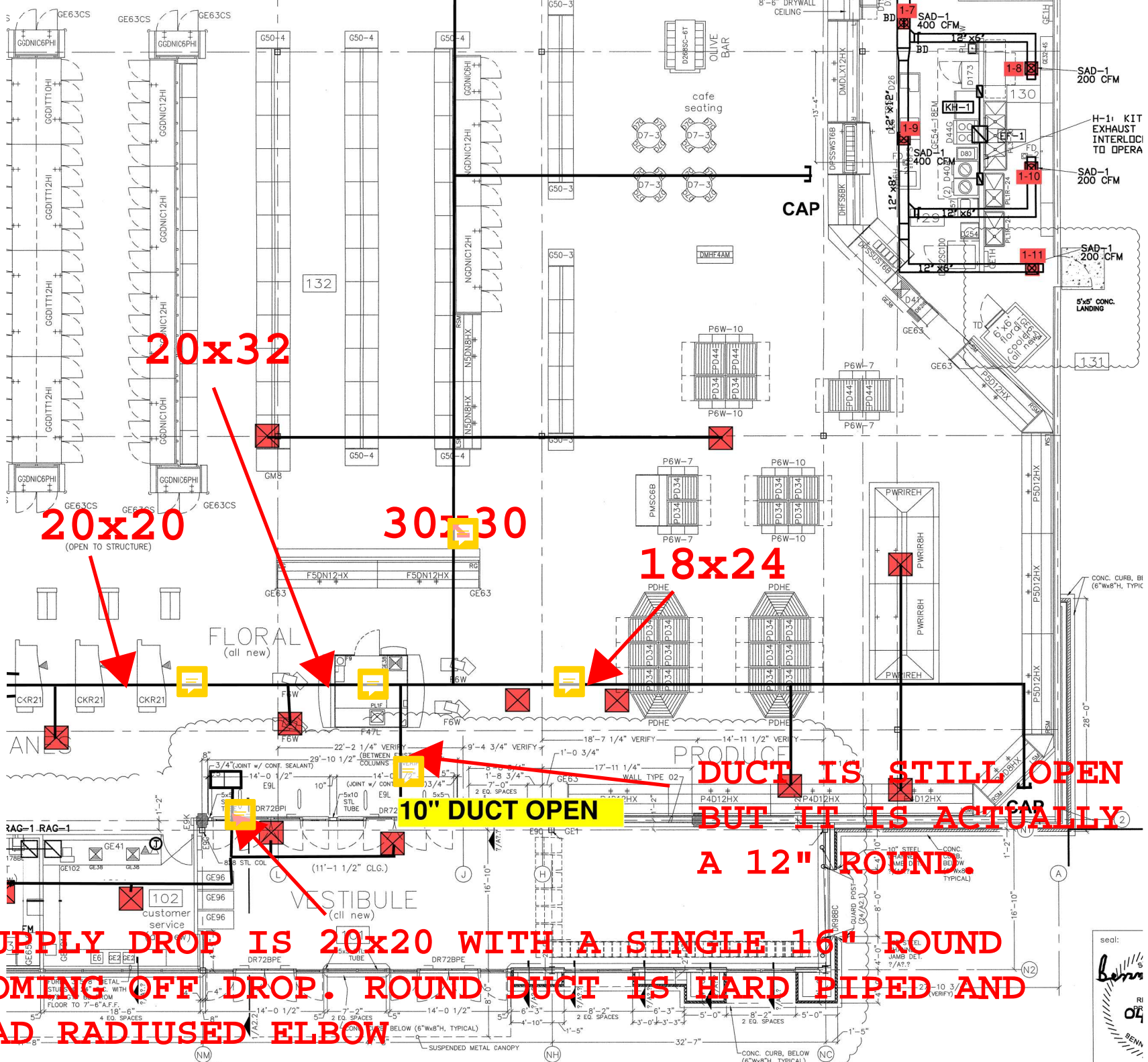
PROMO

ORS



**VERIFIED AS STILL OPEN**

**OLD BANK AREA (NOW CLICKLIST) AHU,  
 ENTIRE HORIZONTAL RUN IS 24x12. DUCT  
 IS INTERNALLY INSULATED. OUTER  
 DIMENSIONS GIVEN.**



**20x32**

**20x20**  
(OPEN TO STRUCTURE)

**30x30**

**18x24**

**10" DUCT OPEN**

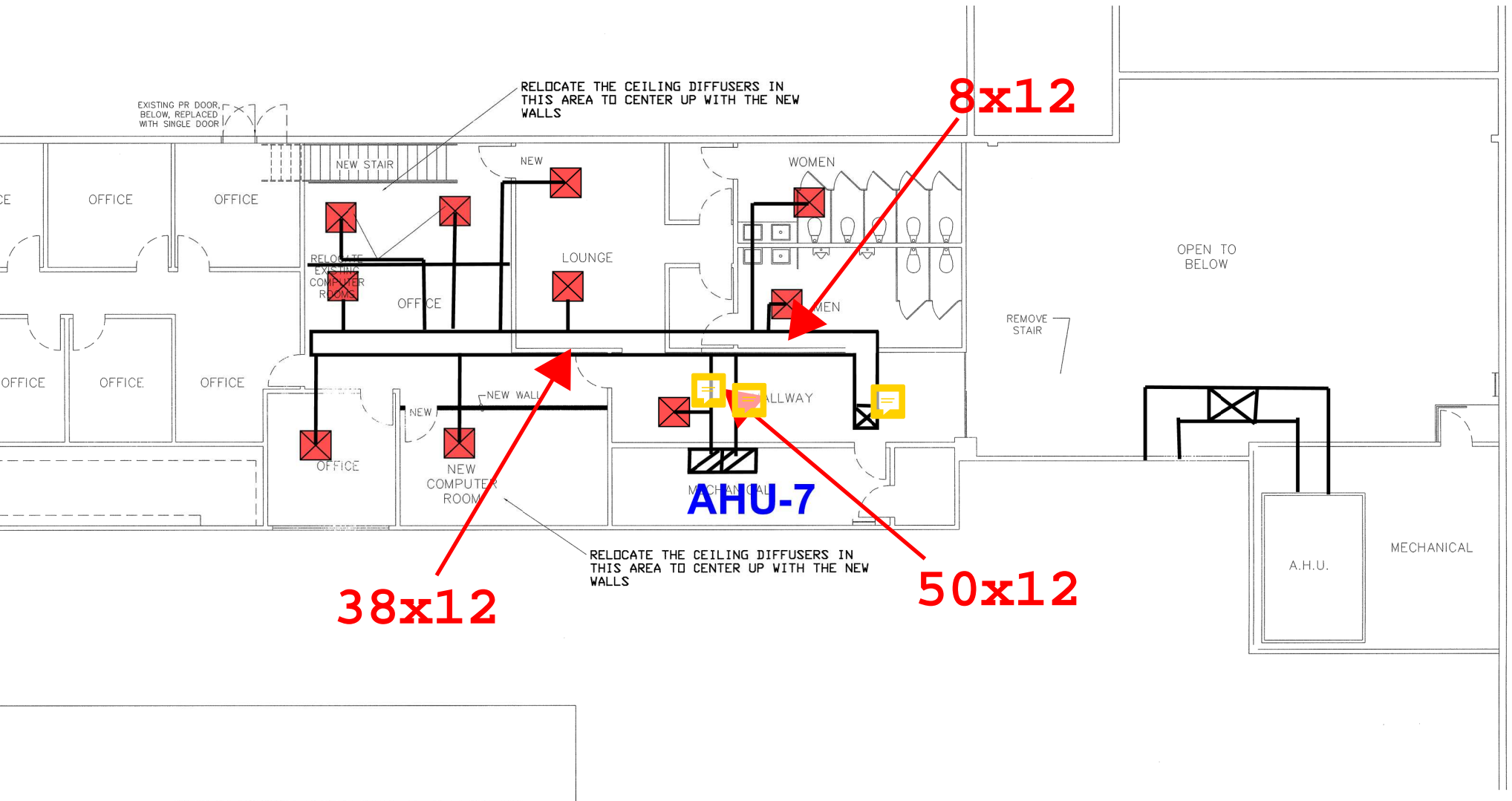
**DUCT IS STILL OPEN  
BUT IT IS ACTUALLY  
A 12" ROUND.**

**SUPPLY DROP IS 20x20 WITH A SINGLE 16" ROUND  
COMING OFF DROP. ROUND DUCT IS HARD PIPED AND  
HAD RADIUSED ELBOW**





**DUCT IS INTERNALLY INSULATED.  
OUTER DIMENSIONS GIVEN.**



**38x12**

**50x12**

**8x12**

**AHU-7**

A.H.U.

MECHANICAL