

NOTE: SEE OVAL SYMBOLS FOR EXISTING COND. CURB CONC. SIDEWALK AND PARKING IS TO BE RELOCATED TO NEW PHARMACY LOCATIONS.

REMOVE EXISTING PHARMACY WINDOW & SERVICE COUNTER & RELOCATE TO NEW PHARMACY LOCATIONS.

NOTE: SEE OVAL SYMBOLS FOR EXISTING COND. CURB CONC. SIDEWALK AND PARKING IS TO BE RELOCATED TO NEW PHARMACY LOCATIONS.

ROUTE CONDENSATE TO STORM DRAIN

PLACE 1" STAT ON AND INSULATED PLATE ON THE OUTSIDE WALL

INSULATE ALL DUCT WITH EXTERNAL 2" VAPOR BARRIER WRAP

CONTRACTOR MAY RELOCATE DUCT IN MEZZ. AREA TO ACCOMPLISH THE REQUIRED AIR DISTRIBUTION

CONTRACTOR MUST BALANCE TO A NEGATIVE PRESSURE IN TOILETS.

INSULATE ALL DUCT WITH EXTERNAL 2" VAPOR BARRIER WRAP

SAD-1 200 CFM

H-1 KITCHEN HOOD EXHAUST ONLY INTERLOCK RTU-1 TO OPERATE WITH HOOD.

SAD-1 200 CFM

SAD-1 200 CFM

5" CONG. LANDING

INSULATE ALL DUCT WITH EXTERNAL 2" VAPOR BARRIER WRAP

CONC. CURB BELOW (6" W/4" TYPICAL)

CONC. CURB BELOW (6" W/4" TYPICAL)

CONC. CURB BELOW (6" W/4" TYPICAL)

CONC. CURB BELOW (6" W/4" TYPICAL)

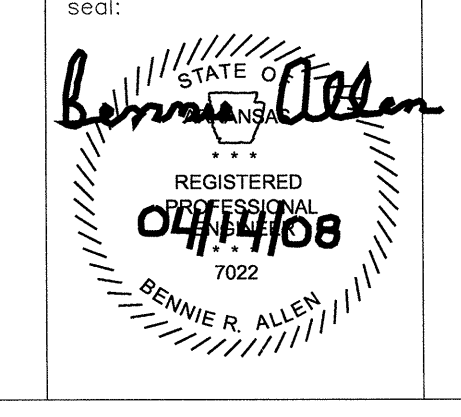
CONC. CURB BELOW (6" W/4" TYPICAL)

CONC. CURB BELOW (6" W/4" TYPICAL)

CONC. CURB BELOW (6" W/4" TYPICAL)

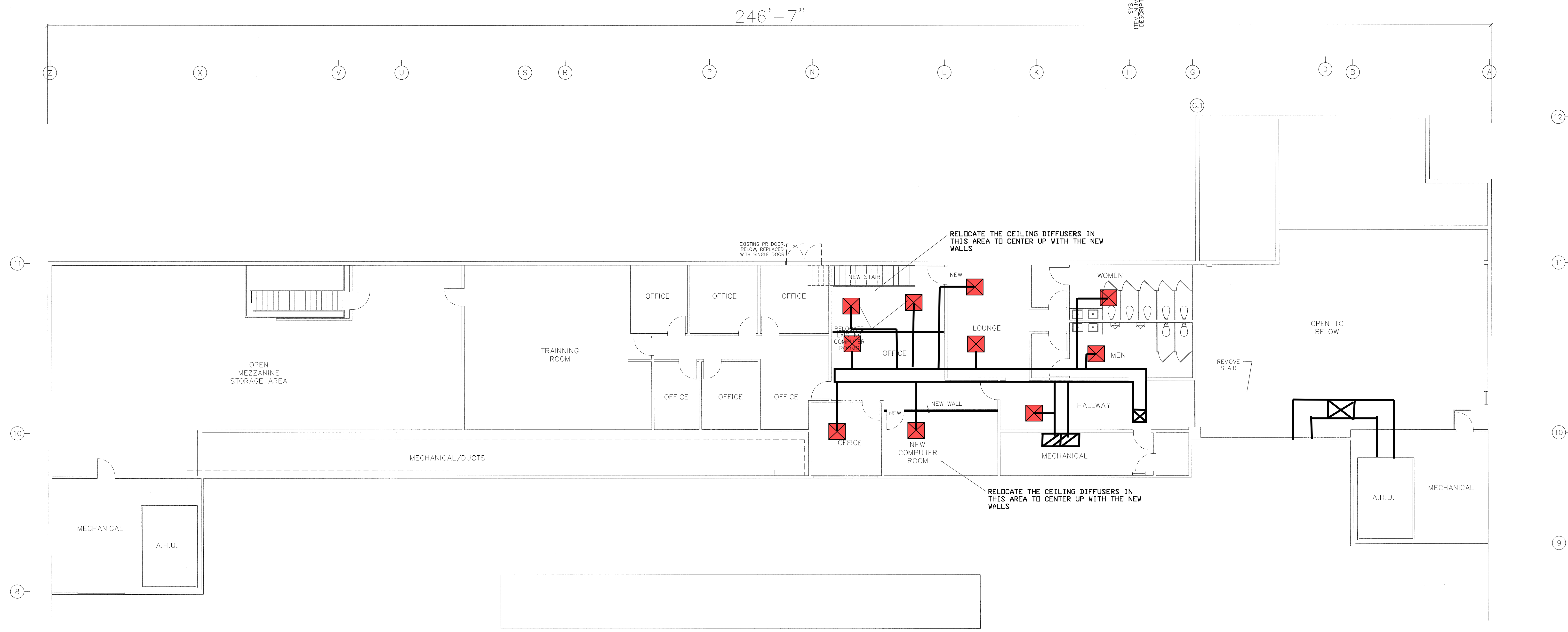
CONC. CURB BELOW (6" W/4" TYPICAL)

CONC. CURB BELOW (6" W/4" TYPICAL)



STORE # Y-630
8415 WEST MADISON
LITTLE ROCK, AR

sheet title: HVAC PLAN
SCALE: 1/8" = 1'-0"
ALLEN ENGINEERING SERVICES, PLLC
Arkansas Engineer's Reg. No. 7022
220 Gibson Ave., West Memphis, AR 72301
phone 870-733-7001 fax 870-733-0737
DATE: August 05, 2008
COMMISSION: 810-7633-WW
revision: sheet: H.1.2



| | | |
|---|--|---|
| | | sheet title: MEZZ HVAC PLAN <small>SCALE: 1/8" = 1'-0"</small> |
| | | STORE # Y-630 <small>8415 WEST MARKHAM LITTLE ROCK, AR</small> |
| August 05, 2008 <small>commission: 810-1630-WW</small> | August 05, 2008 <small>revisions:</small> | sheet: H1.3 |

ALLEN ENGINEERING SERVICES, PLLC
 Arkansas Engineer's Reg. No. 70222
 220 Gibson Ave. West Memphis, Ar. 72301
 phone: 870-735-7901 fax: 870-735-0737