

(10'-6" BELOW MEZZ)

GE6-4 | GE6-4 | GE6-4 | GE6-4 | GE6-4 | GE6-4 | GE6-4 | GE6-4 | GE6-4 | GE6-4

DAIRY COOLER  
(NEW)  
48'-0" x 19'-0"  
110

**AHU-8**  
27'-0" x 15'-6"  
GROCERY FREEZER (NEW)  
111

28'x16'  
MEAT COOLER  
116  
(EXISTING)

DA1 DA1 DA1 DA1 DA1 DA1 DA1 DA1 DA1 DA1 DA1 DA1 DA1 DA1 DA1 DA1 DA1

113

DA2-28 DA2-28 DA2-28 DA2-28 DA2-28 DA2-28 DA2-28 DA2-28 DA2-28 DA2-28 DA2-28 DA2-28 DA2-28 DA2-28 DA2-28 DA2-28 DA2-28

GE63

**32x60**

DAIRY

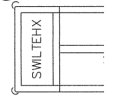
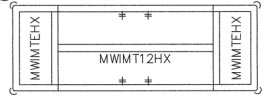
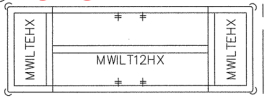
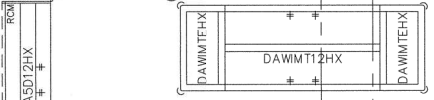
MEAT

GE63

(4)GE63C

(4)GE63C

(4)GE63C



G50-4 G50-4 G50-4 G50-4 G50-4 G50-4

GE63CS

GE63CS

GE63CS

**12x20**



132

132

G50-4 G50-4 G50-4 G50-4 G50-4 G50-4

GE63CS

GE63CS

132

GE63CS

**30x58**

GE63CS

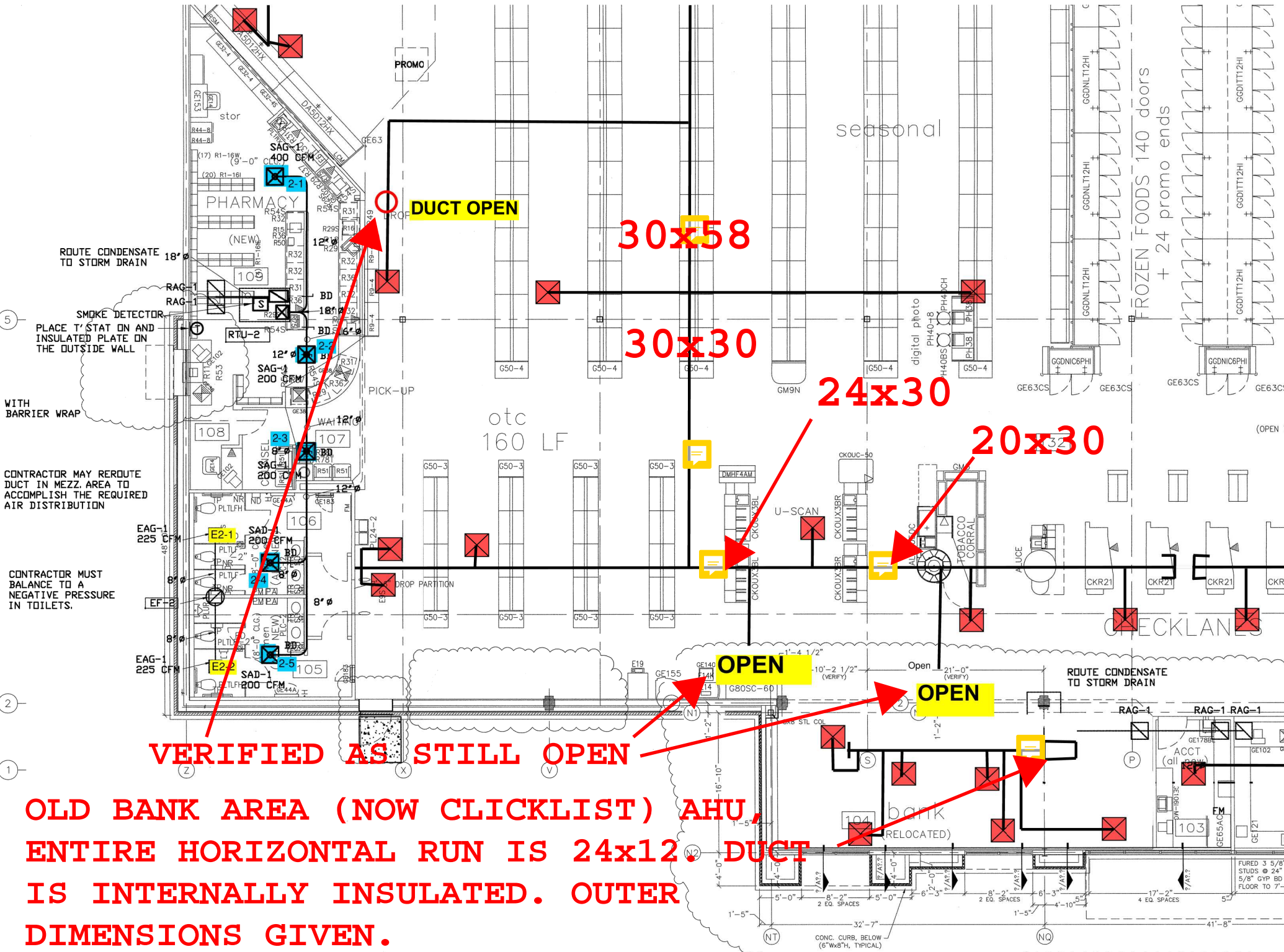
GE63CS

GE63CS



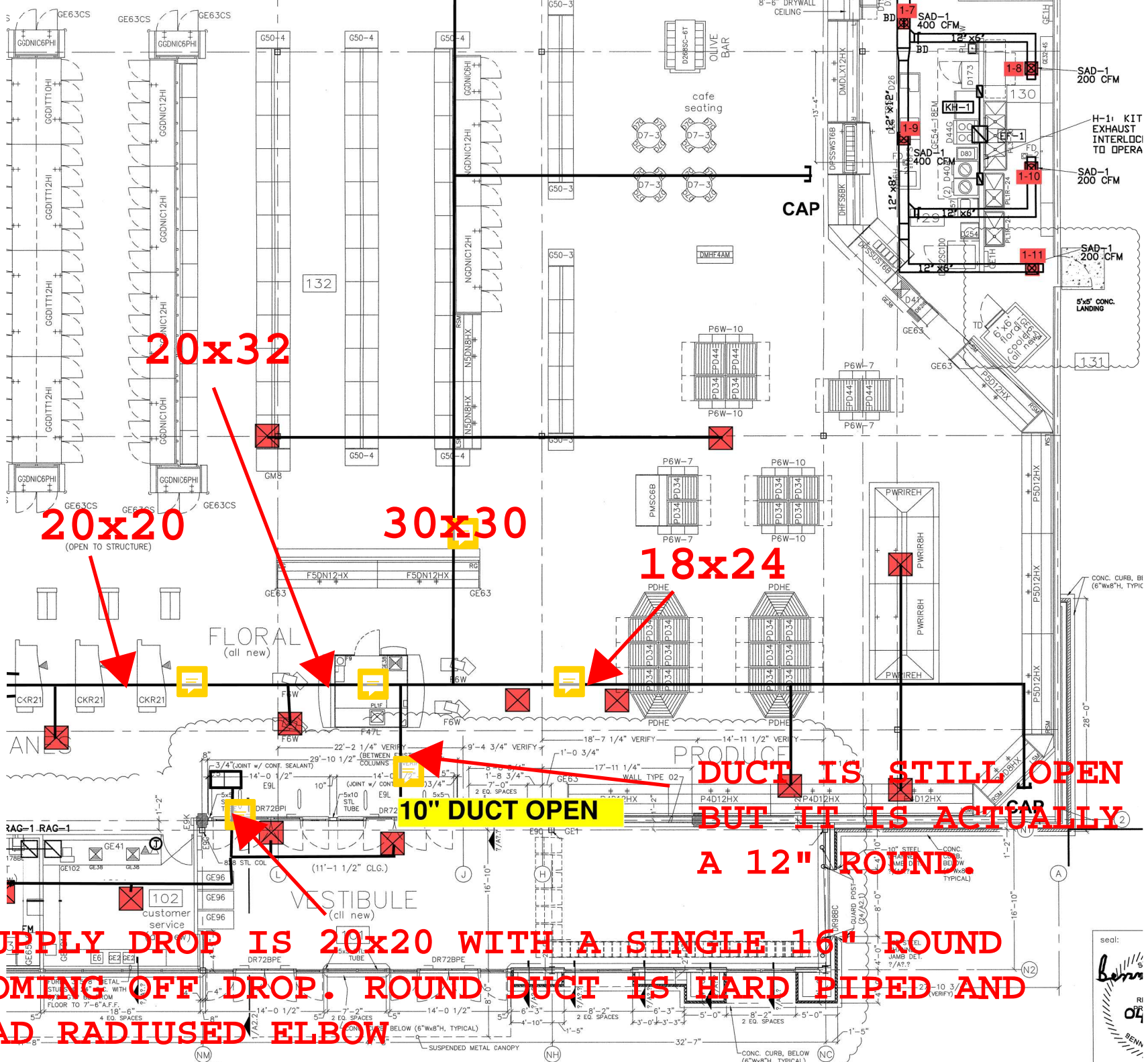
PROMO

ORS



**VERIFIED AS STILL OPEN**

**OLD BANK AREA (NOW CLICKLIST) AHU,  
 ENTIRE HORIZONTAL RUN IS 24x12. DUCT  
 IS INTERNALLY INSULATED. OUTER  
 DIMENSIONS GIVEN.**



**20x32**

**20x20**  
(OPEN TO STRUCTURE)

**30x30**

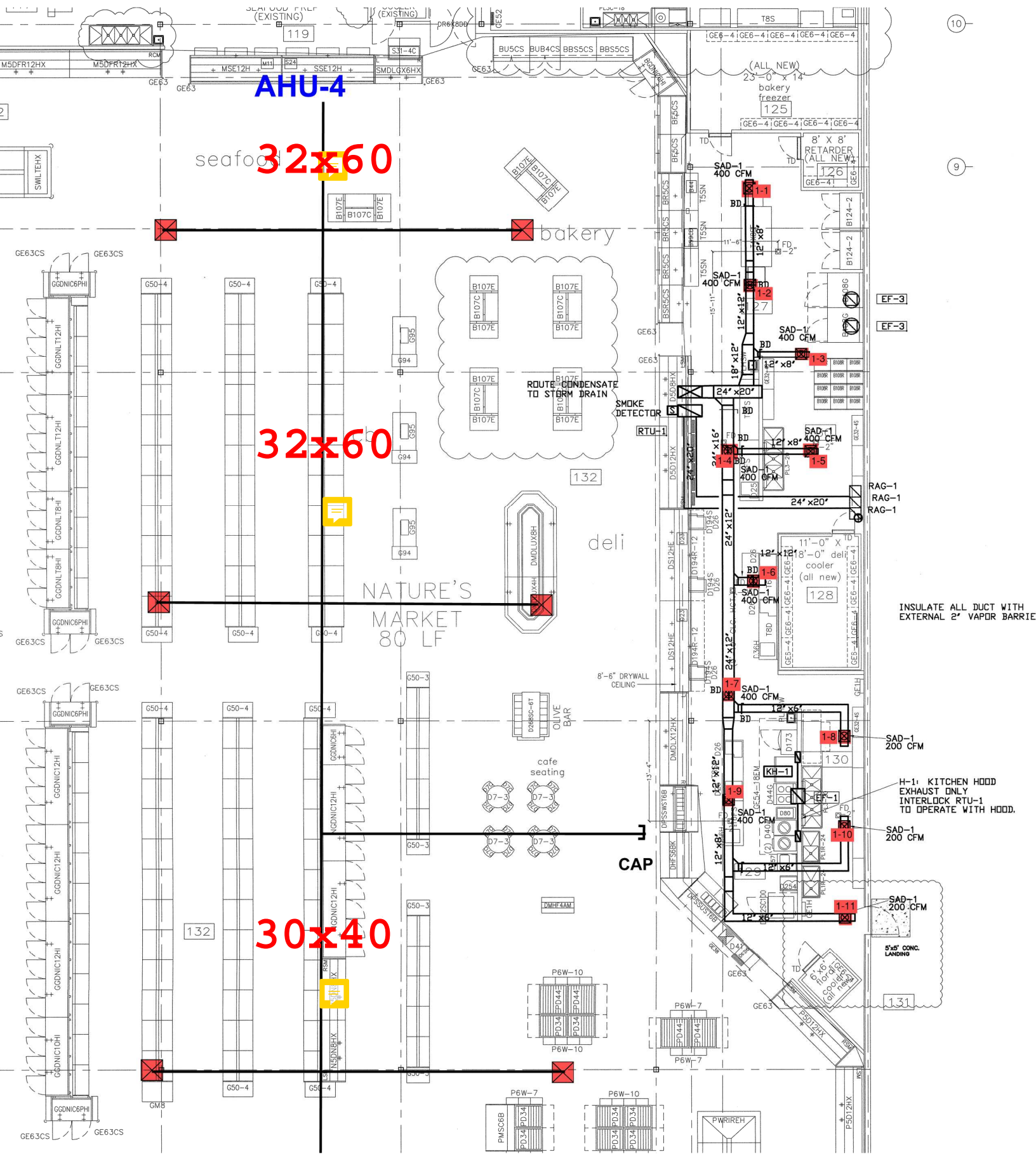
**18x24**

**10" DUCT OPEN**

**DUCT IS STILL OPEN  
BUT IT IS ACTUALLY  
A 12" ROUND.**

**SUPPLY DROP IS 20x20 WITH A SINGLE 16" ROUND  
COMING OFF DROP. ROUND DUCT IS HARD PIPED AND  
HAD RADIUSED ELBOW**





AHU-4

32x60

32x60

30x40

INSULATE ALL DUCT WITH EXTERNAL 2' VAPOR BARRIER

H-1: KITCHEN HOOD EXHAUST ONLY INTERLOCK RTU-1 TO OPERATE WITH HOOD.

SAD-1 200 CFM

SAD-1 200 CFM

SAD-1 200 CFM

SAD-1 200 CFM

SAD-1 200 CFM

SAD-1 200 CFM

SAD-1 200 CFM

SAD-1 200 CFM

10

9

131

132

133

134

135

136

**DUCT IS INTERNALLY INSULATED.  
OUTER DIMENSIONS GIVEN.**

