

Report By:



National TAB
1329 E Kemper Rd, Ste 4210
Cincinnati, OH 45246

Report: Renew
Date: 12/02/2021

PROJECT

**FREDDY'S - WICHITA, KS (ROCK ROAD) - RENEW 3H
(4)**

310 N ROCK ROAD
WICHITA, KS 67206

Client

Freddy's Frozen Custard & Steakburgers (CORPORATE)
260 N Rock Rd
Suite 200
Wichita, KS 67206

Powered by



FACILIBUILD

www.facilibuild.com

National TAB

Project: FREDDY'S - WICHITA, KS (ROCK ROAD) - RENEW 3H (4)

Table Of Contents

Section	Page #
Recommendation List	3
Site Pictures	4
Summary Data	11
Checklist Data	12
Split Sys Furnace	17
AHU/RTU	18
FAN - Supply	22
FAN - Exhaust	23

RECOMMENDATION LIST

Assigned Organization: National TAB

Status: Not Submitted

Asset:

RECOMMENDATION (CLEAN/REPAIR/REPLACE/INFO)	
REPLACE	Office's Furnace thermostat is falling apart. Recommend upgrading the thermostat.

Notes/Comments:

FURNACE THERMOSTAT
OLD RECOMMEND REPLACEMENT



RTU-3
BIRD CAGE IS DAMAGED AND HANGING OFF UNIT



MAU
DIRTY OUTSIDE AIR FILTERS



MAU
CLEAN OUTSIDE AIR FILTERS



RTU-1 (DINING)
DIRTY OUTSIDE AIR FILTERS



RTU-1 (DINING)
CLEAN OUTSIDE AIR FILTERS



RTU-2 (DINING)
DIRTY OUTSIDE AIR FILTERS



RTU-2 (DINING)
CLEAN OUTSIDE AIR FILTERS



RTU-3 (DINING/ORDERING)
DIRTY OUTSIDE AIR FILTERS



RTU-3 (DINING/ORDERING)
CLEAN OUTSIDE AIR FILTERS



RTU-4 (KITCHEN)
DIRTY OUTSIDE AIR FILTERS



RTU-4 (KITCHEN)
CLEAN OUTSIDE AIR FILTERS



RTU-1 (DINING)
DIRTY EVAPORATOR FILTERS



RTU-1 (DINING)
CLEAN EVAPORATOR FILTERS



RTU-2 (DINING)
DIRTY EVAPORATOR FILTERS



RTU-2 (DINING)
CLEAN EVAPORATOR FILTERS



RTU-3 (DINING/ORDERING)
DIRTY EVAPORATOR FILTERS



RTU-3 (DINING/ORDERING)
CLEAN EVAPORATOR FILTERS



FURNACE
DIRTY EVAPORATOR FILTERS



FURNACE
CLEAN EVAPORATOR FILTERS



RTU (DINING)
DIRTY EVAPORATOR



RTU-1 (DINING)
CLEAN EVAPORATOR



RTU-2 (DINING)
DIRTY EVAPORATOR



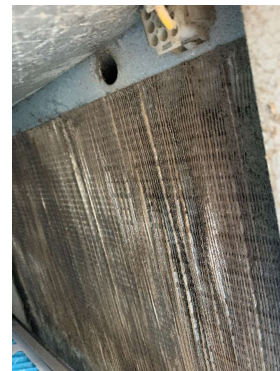
RTU-2 (DINING)
CLEAN EVAPORATOR



RTU-3 (DINING/ORDERING)
DIRTY EVAPORATOR



RTU-3 (DINING/ORDERING)
CLEAN EVAPORATOR



RTU-1 (DINING)
DIRTY CONDENSER



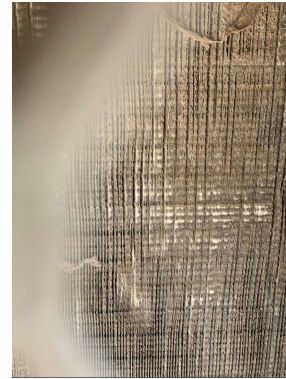
RTU-1 (DINING)
CLEAN CONDENSER



RTU-2 (DINING)
DIRTY CONDENSER



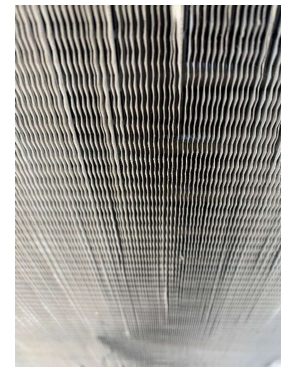
RTU-2 (DINING)
CLEAN CONDENSER



RTU-3 (DINING/ORDERING)
DIRTY CONDENSER



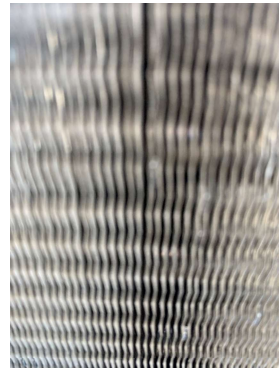
RTU-3 (DINING/ORDERING)
CLEAN CONDENSER



RTU-4 (KITCHEN)
DIRTY CONDENSER



RTU-4 (KITCHEN)
CLEAN CONDENSER



RTU-4 (KITCHEN)
DIRTY EVAPORATOR



RTU-4 (KITCHEN)
CLEAN EVAPORATOR



Project Summary

The purpose of the visit is to perform preventative maintenance for the store. We change belts and filters, clean evaporators and condenser, and check refrigeration and heating cycle where possible. We also, check and set exhaust, outside air, and make up air coming in out of the build to the engineer's design and/or to make the space as comfortable and healthy as possible. All of this ensures a healthy and comfortable space, extends service life of units, and reduces the number of future repairs by prevention.

Freddy's locations for preventative maintenance are done in a pair. This allows two stores preventative maintenance to be completed in one day. To accomplish this the food equipment will be cleaned every 6 months. So, every other visit to a store the food equipment will be evaluated and cleaned.

RTUs: There evaporator coil was rinsed off and cleaned. During warmer months a self-cleaning chemical is sprayed on the evaporator. The outside air filters were rinsed off to remove any dirty, so the unit stays at the designated outside air set point. Based on static pressures, amps, and fan rpm it shows that the total supply has not changed since the last test and balance.

MAU: The intake filters had slight dirt accumulation. They were washed.

All exhaust fans were cleaned out on the roof. The vents to the motor were cleaned so they can vent properly.

All issues found are reported in the Recommendation list at the start of the report.

BUILDING PRESSURE SET POINTS

Assigned Organization: National TAB

Status: Not Submitted

Asset:

INITIAL AIRFLOWS:	
OA RTU-1 (DINING)	263
OA RTU-2 (DINING)	299
OA RTU-3 (KITCHEN)	189
OA RTU-4 (KITHCEN)	186
KEF-1 (GRIDDLE)	1238
KEF-2 (FRYER)	1031
EF-1 (RESTROOM)	46
EF-2 (RESTROOM)	50
MAU-1	724
TOTAL EXHUAAT	2365
TOTAL SUPPLY	1661
NET AIRFLOW	-704
BUILDING PRESSURE (in W.C.)	
INITIAL BUILDING PRESSURE	UTO
FINAL BUILDING PRESSURE	-0.01"

Notes/Comments:

PM CHECKLIST HEATING SEASON

Assigned Organization: National TAB

Status: Not Submitted

Asset:

RTU HEATING SEASON CHECKLIST	
Wipe out and remove debris from the heater section?	Yes
Heat exchanger free of cracks?	Yes
All units properly go into heating?	Yes
Thermostat turn on all stages of heating?	[1]
MAU HEATING SEASON CHECKLIST	
All units properly go into heating?	[1]
Wipe out and remove debris from the heater section?	Yes
Inlet and discharge thermostat setpoints at the properly settings?	Yes

Notes/Comments:

[1] Could not verify heating this visit for proper comfort of staff

PM CHECKLIST HVAC

Assigned Organization: National TAB

Status: Not Submitted

Asset:

HOOD CHECKLIST	
Smoke test capture - Perimeter of hood	100%
Smoke test capture - Top of cooking surface	100%
Hoods turn on by switch or HMI?	Switch
Are the hoods "FAN ON BY BUTTON" upon arrival?	Yes
RTU PM CHECKLIST	
Outside air fliter clean?	Yes
Evaporator Filters Replaced?	Yes
Evaporator Coil cleaned?	Yes
Condenser cleaned? (Seasonal)	Yes
Belt replaced in last 6 months?	Yes
Motor ventilation cleared of dust and debris?	Yes
Is there a return filter on the Dining Room RTU return duct? If so what type?	OPEN PLENUM
Is the return filter clean on the Dinning Rooms RTU Dinning duct?	NA
MAU PM CHECKLIST	
Outside air fliter clean?	Yes
Belt replaced in last 6 months?	Yes
EXHUAST FAN PM CHECKLIST	
Motor ventilation cleared of dust and debris?	Yes
Belt replaced in last 6 months?	Yes
Motor ventilation cleared of dust and debris?	Yes
THERMOSTAT CHECKLIST	
Are the thermostats in fan "ON" position upon arrival?	Yes
Are the thermostats programed?	Yes
ADDITIONAL	
Manager on Duty at time of completion.	GM
Is the roof free of debris? if not what was left on the roof?	Yes

Notes/Comments:

TECH REVIEW CHECKLIST

Assigned Organization: National TAB

Status: Not Submitted

Asset:

Prelim RPT	
Building has postive pressure?	No, building has always had negative pressure
All motors underamping?	Yes
RPMs close to desgin number?	Yes
Static Pressure Profile make sense on RTUs?	Yes
Total ESP and Total FAN static pressures match design?	Yes
All data complete? if not is there an explanation?	Yes
All assets marked data captured complete?	Yes
All units are turned on?	Yes
Pictures	
Before and After Pictures taken?	Yes
Pictures of issue taken?	Yes
Additional	
Pictures uploaded?	Yes
All issues in the issues tab?	Yes
Message sent in Teams that job completed?	Yes

Notes/Comments:

System/Unit: Split Sys Furnace

Asset: Furnace1

AREA:

Unit Data		
	Design	Actual
MFG	NA	TRANE
Model Num	NA	TUE1C100A948 1AD
Serial Num	-	1340310J1G
Configuration	-	VERTICAL
Num Filters Size 1	-	1
Filter Size Size 1	-	20X25X1

Test Data		
	Design	Actual
SF CFM	-	NA
Motor Speed SetPt	-	NA
RL Voltage	-	123
RL Amperage	-	5.7
RA CFM	-	NA
OA CFM	-	NA

Motor Data		
	Design	Actual
Motor MFG	-	NL
Frame	-	ML
Horsepower	-	NL
Motor Rpm	-	1
Phase	-	115
Voltage	-	115
Amperage	-	9.8

Performance Data		
	Design	Actual
Suction ESP	-	NA
Discharge ESP	-	NA
Total ESP	-	NA

Completed By: Stephon Fisher on 12/28/2021

Notes: [1]TSTAT MAXED OUT AND WILL NOT MAKE UNIT GO INTO HEATING.

ACCORDING TO MANAGER HEATING IS VERIFIED AND FUNCTIONAL

System/Unit: AHU/RTU

Asset: RTU1

AREA: DINING

Unit Data		
	Design	Actual
MFG	NA	YORK
Model Num	NA	XN048E20A1AA 1
Serial Num	-	N1L8237456
Num OA Filters 1	-	1
OA Filter Size 1	-	14.5X19
Num Final Filter 1	-	1
Final Filter Size 1	-	14X25X1
Num Final Filter 2	-	2
Final Filter Size 2	-	15X20X1

Motor Data		
	Design	Actual
Motor MFG	-	NL
Frame	-	NL
Horsepower	-	0.33
Motor Rpm	-	NL
Phase	-	1
Rated Voltage	-	208-230
Rated Amperage	-	2.8

Drive Data		
	Design	Actual
Num of Belts	-	DD
Belt Size	-	DD
Belt Alignment	-	DD

Gas Heat		
	Design	Actual
Gas Type	-	NA
Burner Type	-	NA
Heater Operates (y/n)	-	NA

Test Data		
	Design	Actual
SF RPM	-	DD
OA CFM	276	263
RL Voltage	-	208
RL Amperage	-	2.7

Performance Data		
	Design	Actual
MA Plenum SP	-	-0.35"
Fan Suction SP	-	-0.70"
Fan Discharge SP	-	0.17"
Total ESP	0.47"	0.52"
Fan Total SP	-	0.87"
MA Temp (db/wb)	-	64.1/33.5
SA Temp (db/wb)	-	91.3/56.0

General		
	Design	Actual
Unit free of Damage	-	YES
Unit Completely Assembled	-	YES
Unit Leveled	-	YES
Curb & Unit Installed Air Tight	-	YES
Controls Complete	-	YES
Unit Filters Clean	-	YES
Evap Coil Clean	-	YES
Evap Coil Free of Frost	-	YES
Condensor Coil Clean	-	YES
Condensor Fins Straight	-	YES
Refr Sight Glass Dry	-	YES
Condensate Drain Installed	-	YES
Crankcase Heaters Operate	-	NA

Completed By: Stephon Fisher on 12/28/2021

Notes:

System/Unit: AHU/RTU

Asset: RTU2

AREA: DINING

Unit Data		
	Design	Actual
MFG	NA	YORK
Model Num	NA	XPO048C00A2A AA2A
Serial Num	-	N1N4347927
Num OA Filters 1	-	1
OA Filter Size 1	-	14.5X9
Num Final Filter 1	-	2
Final Filter Size 1	-	15X20X1
Num Final Filter 2	-	1
Final Filter Size 2	-	14X25X1

Motor Data		
	Design	Actual
Motor MFG	-	US MOTORS
Frame	-	NL
Horsepower	-	0.75
Motor Rpm	-	1075
Phase	-	1
Rated Voltage	-	208-230
Rated Amperage	-	4

Drive Data		
	Design	Actual
Num of Belts	-	DD
Belt Size	-	DD
Belt Alignment	-	DD

Gas Heat		
	Design	Actual
Gas Type	-	NA
Burner Type	-	NA
Heater Operates (y/n)	-	NA

Test Data		
	Design	Actual
SF RPM	-	DD
OA CFM	243	299
RL Voltage	-	210
RL Amperage	-	3.6

Performance Data		
	Design	Actual
MA Plenum SP	-	-0.30"
Fan Suction SP	-	-0.72"
Fan Discharge SP	-	0.20"
Total ESP	0.62"	0.50"
Fan Total SP	-	0.92"
MA Temp (db/wb)	-	63.1/32.8
SA Temp (db/wb)	-	94.9/59.8

General		
	Design	Actual
Unit free of Damage	-	YES
Unit Completely Assembled	-	YES
Unit Leveled	-	YES
Curb & Unit Installed Air Tight	-	YES
Controls Complete	-	YES
Unit Filters Clean	-	YES
Evap Coil Clean	-	YES
Evap Coil Free of Frost	-	YES
Condensor Coil Clean	-	YES
Condensor Fins Straight	-	YES
Refr Sight Glass Dry	-	YES
Condensate Drain Installed	-	YES
Crankcase Heaters Operate	-	NA

Completed By: Stephon Fisher on 12/28/2021

Notes:

System/Unit: AHU/RTU

Asset: RTU3

AREA: DINING / ORDERING

Unit Data		
	Design	Actual
MFG	NA	YORK
Model Num	NA	B7HZ060A25A
Serial Num	-	W1D5635345
Num OA Filters 1	-	1
OA Filter Size 1	-	11X12
Num Final Filter 1	-	I INTERNAL MESH
Final Filter Size 1	-	24X14X1
Num Final Filter 2	-	--
Final Filter Size 2	-	--

Motor Data		
	Design	Actual
Motor MFG	-	GENTEQ
Frame	-	NL
Horsepower	-	1
Motor Rpm	-	1050
Phase	-	1
Rated Voltage	-	208-230
Rated Amperage	-	7.8

Drive Data		
	Design	Actual
Num of Belts	-	DD
Belt Size	-	DD
Belt Alignment	-	DD

Gas Heat		
	Design	Actual
Gas Type	-	NATURAL GAS
Burner Type	-	BURNER TUBES
Heater Operates (y/n)	-	[1]

Test Data		
	Design	Actual
SF RPM	-	DD
OA CFM	167	189
RL Voltage	-	213
RL Amperage	-	3.5

Performance Data		
	Design	Actual
MA Plenum SP	-	-0.40"
Fan Suction SP	-	-0.75"
Fan Discharge SP	-	0.19"
Total ESP	0.59"	0.59"
Fan Total SP	-	0.94"
MA Temp (db/wb)	-	65.0/34.1
SA Temp (db/wb)	-	[1]

General		
	Design	Actual
Unit free of Damage	-	YES
Unit Completely Assembled	-	YES
Unit Leveled	-	YES
Curb & Unit Installed Air Tight	-	YES
Controls Complete	-	YES
Unit Filters Clean	-	YES
Evap Coil Clean	-	YES
Evap Coil Free of Frost	-	YES
Condensor Coil Clean	-	YES
Condensor Fins Straight	-	YES
Refr Sight Glass Dry	-	YES
Condensate Drain Installed	-	YES
Crankcase Heaters Operate	-	NA

Completed By: Stephon Fisher on 12/28/2021

Notes: [1]VERY HOT IN ORDERING. COMFORT BECAME A PROBLEM AND COULD NOT VERIFY HEATING

System/Unit: AHU/RTU

Asset: RTU4

AREA: KITCHEN

Unit Data		
	Design	Actual
MFG	NA	TRANE
Model Num	NA	4YCC4060A109 0AB
Serial Num	-	202813933L
Num OA Filters 1	-	1
OA Filter Size 1	-	10X9
Num Final Filter 1	-	--
Final Filter Size 1	-	--
Num Final Filter 2	-	--
Final Filter Size 2	-	--

Motor Data		
	Design	Actual
Motor MFG	-	EMERSON
Frame	-	NL
Horsepower	-	NL
Motor Rpm	-	NL
Phase	-	1
Rated Voltage	-	208
Rated Amperage	-	6.9

Drive Data		
	Design	Actual
Num of Belts	-	DD
Belt Size	-	DD
Belt Alignment	-	DD

Gas Heat		
	Design	Actual
Gas Type	-	NATURAL GAS
Burner Type	-	BURNER TUBES
Heater Operates (y/n)	-	[1]

Test Data		
	Design	Actual
SF RPM	-	DD
OA CFM	165	186
RL Voltage	-	208
RL Amperage	-	5.9

Performance Data		
	Design	Actual
MA Plenum SP	-	NA
Fan Suction SP	-	0.33"
Fan Discharge SP	-	0.53"
Total ESP	0.74"	0.86"
Fan Total SP	-	0.86"
MA Temp (db/wb)	-	64.5/32.8
SA Temp (db/wb)	-	[1]

General		
	Design	Actual
Unit free of Damage	-	YES
Unit Completely Assembled	-	YES
Unit Leveled	-	YES
Curb & Unit Installed Air Tight	-	YES
Controls Complete	-	YES
Unit Filters Clean	-	YES
Evap Coil Clean	-	YES
Evap Coil Free of Frost	-	YES
Condensor Coil Clean	-	YES
Condensor Fins Straight	-	YES
Refr Sight Glass Dry	-	YES
Condensate Drain Installed	-	YES
Crankcase Heaters Operate	-	YES

Completed By: Stephon Fisher on 12/28/2021

Notes: [1]VERY HOT IN KITCHEN. TSTAT TURNED UP AND EMPLOYEE COMFORT BECAME A PROBLEM.

System/Unit: FAN - Supply

Asset: MAU1

AREA: HOODS

Unit Data		
	Design	Actual
MFG	NA	ECON-AIR
Model Num	NA	F.A-A1-G10
Serial Num	-	1695242
Num Filters Size 1	-	3
Filter Size 1	-	16X20X2
Num Filters Size 2	-	--
Filter Size 2	-	--

Motor Data		
	Design	Actual
Motor MFG	-	WEG
Frame	-	B48
Horsepower	-	0.33
Motor Rpm	-	1735
Phase	-	1
Voltage (rated)	-	115/208-230
Amperage (rated)	-	7
Service Factor	-	3.9-3.5

Drive Data		
	Design	Actual
Num of Belts	-	1
Belt Size	-	AX43
Belt Alignment Verified	-	GOOD

Gas Heat		
	Design	Actual
Gas Type	-	NATURAL GAS
Burner Type	-	BURNER TUBES
Heater Operates (y/n)	-	NA
Flame Status (pass/fail)	-	NA
Inlet Air Temp SetPt	-	NA
Discharge Air Temp SetPt	-	NA
Air Flow Switch SP Actual	-	NA

Completed By: Stephon Fisher on 12/28/2021

Notes:

Test Data		
	Design	Actual
CFM	718	724
SF RPM	825	826
Motor RPM	-	1772
RL Voltage	-	124
RL Amperage	-	3.6

General		
	Design	Actual
Unit free of Damage	-	YES
Curb & Unit Installed Air Tight	-	YES
Fan Rotation Correct	-	YES
Fan Belt Condition	-	YES
Unit Filters Clean	-	YES

System/Unit: FAN - Exhaust

Asset: EF1

AREA: Fryer HOOD

Unit Data		
	Design	Actual
MFG	NA	NOT LEGIBLE
Model Num	NA	150R5B
Serial Num	-	257S725527700 00007010103
Type	-	UPBLAST
Configuration	-	VERTICAL

Motor Data		
	Design	Actual
Motor MFG	-	MARATHON
Frame	-	48Y
Horsepower	-	0.5
Motor Rpm	-	1725
Phase	-	1
Voltage (rated)	-	115
Amperage (rated)	-	7.5
Service Factor	-	1.25

Drive Data		
	Design	Actual
Num of Belts	-	1
Belt Size	-	AX20
Belt Alignment Verified	-	GOOD

Completed By: Stephon Fisher on 12/28/2021

Notes:

Test Data		
	Design	Actual
CFM	1350	1238
Fan RPM	1170	1118
Fan Rotation	-	CCW
Motor RPM	-	1752
RL Voltage	-	NOT SAFE
RL Amperage	-	6.4
Suction ESP	-	-0.69"
Discharge ESP	-	ATM
Total ESP	0.79"	0.69"

System/Unit: FAN - Exhaust

Asset: EF2

AREA: Griddle HOOD

Unit Data		
	Design	Actual
MFG	NA	NOT LEGIBLE
Model Num	NA	150VCR 150V6B
Serial Num	-	257SE73256-00/0000701
Type	-	UPBLAST
Configuration	-	VERTICAL

Test Data		
	Design	Actual
CFM	1100	1031
Fan RPM	980	988
Fan Rotation	-	CCW
Motor RPM	-	1784
RL Voltage	-	208
RL Amperage	-	5.5
Suction ESP	-	-0.43"
Discharge ESP	-	ATM
Total ESP	0.35"	0.43"

Motor Data		
	Design	Actual
Motor MFG	-	CENTURY AC
Frame	-	J56
Horsepower	-	0.75
Motor Rpm	-	1725
Phase	-	1
Voltage (rated)	-	208-230/115
Amperage (rated)	-	5.4-5.5/11
Service Factor	-	1.25

Drive Data		
	Design	Actual
Num of Belts	-	1
Belt Size	-	AX29
Belt Alignment Verified	-	GOOD

Completed By: Stephon Fisher on 12/28/2021

Notes:

System/Unit: FAN - Exhaust

Asset: EF3

AREA: Mens Restroom

Unit Data		
	Design	Actual
MFG	BROAN	BROAN
Model Num	NL	NL
Serial Num	-	NL

Test Data		
	Design	Actual
CFM	46	46

Motor Data		
	Design	Actual
Motor MFG	-	NL
Horsepower	-	NL
Motor Rpm	-	NL
Phase	-	1
Voltage (rated)	-	120
Amperage (rated)	-	0.90

Completed By: Stephon Fisher on 12/28/2021

Notes:

System/Unit: FAN - Exhaust

Asset: EF4

AREA: Womens Restroom

Unit Data		
	Design	Actual
MFG	BROAN	BROAN
Model Num	NL	683
Serial Num	-	NA

Test Data		
	Design	Actual
CFM	50	50

Motor Data		
	Design	Actual
Motor MFG	-	NL
Horsepower	-	NL
Motor Rpm	-	NL
Phase	-	1
Voltage (rated)	-	120
Amperage (rated)	-	0.7

Completed By: Stephon Fisher on 12/28/2021

Notes: