

**Report By:**

National TAB  
1329 E. KEMPER ROAD  
SUITE 4210  
CINCINNATI, OH 45246



**Report: Remarks**  
**Function: Test, Adjust, & Balance**  
**Date: 10/16/2024**  
**Completed By: National TAB**

# PROJECT

**10-14-24 KURA SUSHI K041 PHILADELPHIA,  
PA REVIVE**

1721 Chesnut Street

Philadelphia, PA 19102

**Client**

Kura Sushi

# National TAB

Project: 10-14-24 KURA SUSHI K041 PHILADELPHIA, PA REVIVE

## Table Of Contents

Section	Page #
Issue Data	3

## Issue List

- DOAS- Final Filters
- DOAS- Intake filters
- RTU-1 Filters
- RTU-1 Power
- RTU-2 Condensor Fan motor
- RTU-2: Filters clogged/collapsing



### 10-14-24 KURA SUSHI K041 PHILADELPHIA, PA REVIVE

#### Project Issue Information

**Issue Name :** DOAS- Final Filters  
**Description :** Doas disposable final filters are not clogged but they are dirty and are near end of life. Recommend replacement soon.  
**Created By :** National TAB                      **Assigned To :** National TAB - Dan Hertenstein  
**Status :** Open  
**Priority :** Low                                      **Asset Tag :**  
**Originated Date :** 10/16/2024 - Tyler Youells - National TAB

Project Issue File Details



10/16/2024



10/16/2024



10/16/2024



**10-14-24 KURA SUSHI K041 PHILADELPHIA, PA REVIVE**

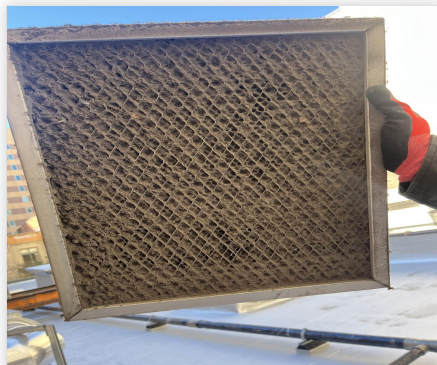
**Project Issue Information**

**Issue Name :** DOAS- Intake filters  
**Description :** Doas-1/2 Intake filters are fully clogged. Recommend cleaning or replacement. Filters removed for TAB and replaced when completed.  
**Created By :** National TAB                      **Assigned To :** National TAB - Dan Hertenstein  
**Status :** Open  
**Priority :** Urgent                                      **Asset Tag :**  
**Originated Date :** 10/16/2024 - Tyler Youells - National TAB

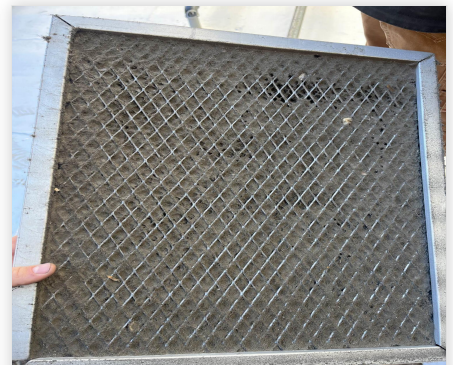
Project Issue File Details



10/16/2024



10/16/2024



10/16/2024

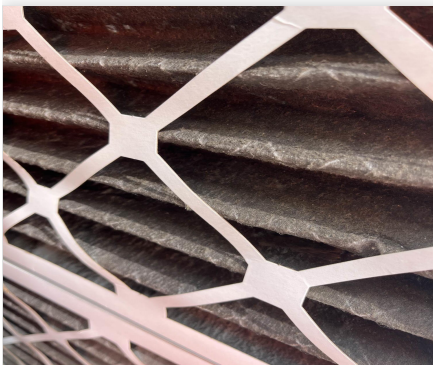


**10-14-24 KURA SUSHI K041 PHILADELPHIA, PA REVIVE**

**Project Issue Information**

**Issue Name :** RTU-1 Filters  
**Description :** RTU-1 OA intake filters are dirty/clogged recommend cleaning/replacing. Also disposable final filters are clogged and recommend replacing.  
**Created By :** National TAB                      **Assigned To :** National TAB - Dan Hertenstein  
**Status :** Open  
**Priority :** High                                      **Asset Tag :**  
**Originated Date :** 10/16/2024 - Tyler Youells - National TAB

Project Issue File Details



10/16/2024



10/16/2024



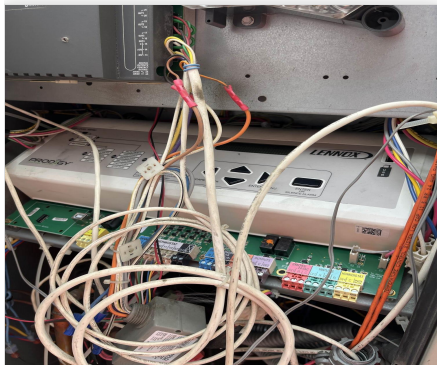
10/16/2024

**10-14-24 KURA SUSHI K041 PHILADELPHIA, PA REVIVE**

**Project Issue Information**

**Issue Name :** RTU-1 Power  
**Description :** RTU-1 Does. It have any power to the disconnect and unit is not running. NTi will try to find the breaker panel to see if unit is tripped. Recommend having HVAC diagnose  
**Created By :** National TAB                      **Assigned To :** National TAB - Dan Hertenstein  
**Status :** Open  
**Priority :** Urgent                                      **Asset Tag :**  
**Originated Date :** 10/16/2024 - Tyler Youells - National TAB

Project Issue File Details



10/16/2024



10/16/2024



**10-14-24 KURA SUSHI K041 PHILADELPHIA, PA REVIVE**

**Project Issue Information**

**Issue Name :** RTU-2 Condensor Fan motor  
**Description :** Right side Outdoor fan motor/condenser motor is not operational and is allowing air to bypass condenser coil. Recommend hvac service repair.  
**Created By :** National TAB                      **Assigned To :** National TAB - Dan Hertenstein  
**Status :** Open  
**Priority :** High                                      **Asset Tag :**  
**Originated Date :** 10/16/2024 - Tyler Youells - National TAB

Project Issue File Details



10/16/2024



10/16/2024

