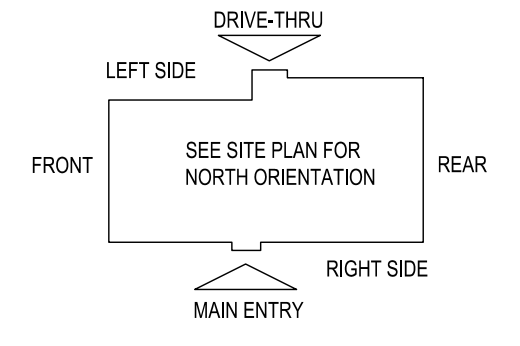


E5 HVAC PLAN
 SCALE: 1/4" = 1'-0"



NOTE: ALL DUCTWORK TO BE LOCATED IN TRUSS SPACE WHERE POSSIBLE. SEE FRAMING PLAN.
 HVAC SETPOINTS RECOMMENDED BY CORPORATE OPERATIONAL GUIDELINES:
 1. DINING: HEATING 70 DEGF, COOLING 72 DEGF
 2. KITCHEN: HEATING 68 DEGF, COOLING 74 DEGF

SUPPLY DUCTWORK SIZING TABLE*			
ROUND		RECTANGULAR	
SIZE	CFM RANGE	SIZE	CFM RANGE
8"	115 - 235	8"x8"	205 - 300
10"	240 - 435	10"x8"	305 - 400
12"	440 - 710	10"x10"	405 - 550
14"	715 - 1,070	12"x10"	555 - 700
16"	1,075 - 1,530	12"x12"	705 - 900
18"	1,535 - 2,090	14"x12"	905 - 1,105
20"	2,095 - 2,760	16"x12"	1,110 - 1,315
22"	2,765 - 3,550	18"x12"	1,320 - 1,520
24"	3,555 - 4,470	20"x12"	1,525 - 1,740
*CONTRACTOR MAY SUBSTITUTE RECTANGULAR FOR ROUND DUCTWORK ON MAIN RUNS AT THEIR DISCRETION. BRANCHES TO DIFFUSERS TO REMAIN ROUND.			
		22"x12"	1,745 - 1,950
		24"x12"	1,955 - 2,170
		26"x12"	2,175 - 2,400
		28"x12"	2,405 - 2,630
		30"x12"	2,615 - 2,840
		32"x12"	2,845 - 3,070
		34"x12"	3,075 - 3,290
		36"x12"	3,295 - 3,520
		36"x14"	3,525 - 4,420

DIFFUSER, REGISTER, AND GRILLE SCHEDULE									
TAG	SERVICE	TYPE	MATERIAL	THROW	FACE	NECK	MOUNTING	MANUFACTURER/MODEL	Notes
SD-1	SUPPLY	LOUVERED	STEEL	4-WAY	24X24	SEE PLAN	LAY-IN	CARNES SFP24	2, 4
SD-2 - NOT USED									
SD-3	SUPPLY	LOUVERED	STEEL	3-WAY	SEE PLAN	SEE PLAN	SURFACE	CARNES SKSA	2, 4
SD-4	SUPPLY	LOUVERED	STEEL	4-WAY	12X12	SEE PLAN	SURFACE	CARNES SKSA	1, 2, 4
SD-5	SUPPLY	PERFORATED	STEEL	PERFORATED	24X24	SEE PLAN	LAY-IN	CARNES SPR24	2, 4
RG-1	RETURN	SQUARE EGGRATE	ALUMINUM	N/A	24X24	22X22	LAY-IN	CARNES RAMPF	2, 3, 4
EG-1	RETURN	LOUVERED GRILLE	STEEL	N/A	12X12	SEE PLAN	SURFACE	CARNES RTLAH	1, 2, 4
TG-1	TRANSFER	LOUVERED GRILLE	STEEL	N/A	SEE PLAN	SEE PLAN	SURFACE	CARNES RTLAH	2, 4
DIFFUSER NOTES:									
1. PROVIDE w/ ADJUSTABLE OPPOSED BLADE DAMPER									
2. VERIFY ALL DIFFUSERS AND RETURN GRILLE COLORS WITH OWNER AND ARCHITECT									
3. PROVIDE w/ 22X22 PLENUM BOX.									
4. ALL DIFFUSERS AND RETURNS LOCATED IN BLACK CEILING SHALL BE FLAT BLACK FINISH.									

HOOD INFORMATION

HOOD NO.	MARK	MODEL	HOOD DIMENSIONS (IN.)			HOOD CONSTR.	COOKING LOAD / DUTY RATING	EXHAUST COLLAR(S)					SUPPLY		TOTAL WEIGHT LBS.	SECTION LOCATION	
			LENGTH	WIDTH	HEIGHT			WIDTH	LENGTH	DIA.	CFM	S.P.	MUA CFM	AC CFM			
1	GRIDDLE HOOD ITEM 49	XGEP-64-S	64	TOP 23 BOT 8	FRT 12 BACK 36	430 SS WHERE EXPOSED	MEDIUM	1500	12	12		1500	1.918			136.8	SINGLE

HOOD INFORMATION

HOOD NO.	MARK	LIGHTING DETAILS			GREASE FILTRATION DETAILS			UTILITY CABINET(S)									
		FIXTURE TYPE BULB / LAMP INFO	QTY	FOOT CANDLES	TYPE / MODEL MATERIAL	QTY	SIZE (IN.) L H	LOCATION	FIRE SYSTEM TYPE	SIZE	MODEL	CONTROLS INTERFACE					
1	GRIDDLE HOOD ITEM 49				GREASE GRABBER STAINLESS STEEL	4	16										

HOOD OPTIONS

UL 710 LISTED W/ OUT EXHAUST FIRE DAMPER - UL #R25625
 BACK NON-INTEGRAL AIR SPACE - 3 IN WIDE
 26 IN HIGH CEILING ENCLOSURES - FRONT LEFT RIGHT - FIELD INSTALLED
 FACTORY MOUNTED EXHAUST COLLAR(S)
 PERFORMANCE ENHANCING LIP (PEL) TECHNOLOGY
 STANDING SEAM CONSTRUCTION FOR SUPERIOR STRENGTH

SPECIAL DESIGN REQUESTS

SDR #K1100145 - FLUE BYPASS HOOD
 SDR #K1800144 - CULVERS 4VAT 2FIRE PROCESS - GRIDDLE HOOD

Direct Drive Upblast Centrifugal Roof Exhaust Fan

MARK INFORMATION			FAN INFORMATION					MOTOR INFORMATION					
QTY	MARK	MODEL	VOLUME (CFM)	TOTAL EXTERNAL SP (IN WG)	FAN RPM	OPERATING POWER (HP)	WEIGHT (LB.)	SIZE (HP)	V/C/P	ENCLOSURE	MOTOR RPM	WINDINGS	NEC FLA*
1	PRV-2 Griddle Fan	XCUE-140-VG	1,500	1.8	1,702	0.83	92	1	115/60/1	OP	1725	1	16

NEC FLA - Based on table 430.250 or 430.248 of National Electrical Code 2020. Actual motor FLA may vary for sizing thermal overload, consult factory

PRV-2 Griddle Fan : SELECTED OPTIONS AND ACCESSORIES

One piece fully welded windband
 Tapered bushing wheel hub
 Breather tube outlet area min. 4.4 sq. in. (sizes 99-480), 2.0 sq. in. (sizes 60-95)
 Min. windband material thickness: 0.051" aluminum (060-240), 0.064" aluminum (240HP, 240XP), 0.080" aluminum (sizes 300-480)
 Larger Curb Cap Size - 26 Square
 UL/cUL 762 Listed - "Power Ventilators for Rest. Exh. Appliances"
 Switch, NEMA-3R, Toggle, Shipped with Unit
 Hinge, Factory Installed
 High Temp Curb Seal Rated for Continuous Duty at 1500 F (Factory Attached)
 Grease Trap (PN 475538)
 Clean-out Port - Factory Installed

FIRE SYSTEM INFORMATION

MARK	MODEL	LOCATION	FLOW POINTS		SUPPLY LINE	DETECTION
			HOODS	PCU		
FIRE SUPPRESSION-GRIDDLE HOOD	ANSUL R-102 WET CHEMICAL	REMOTE MOUNTED	6 UTILIZED 11 AVAILABLE		CONTINUOUS	FUSIBLE LINK

FIRE SYSTEM OPTIONS AND ACCESSORIES

FULL INSTALLATION (INCLUDES PRE-PIPED HOOD(S) WITH DETECTION AND FACTORY COORDINATED INSTALL)
 CHROME SLEEVES FOR FACTORY PROVIDED APPLIANCES DROPS - INCLUDED
 METAL BLOW-OFF CAPS - INCLUDED
 HOOD SUPPRESSION AGENT - INCLUDED - 3 GAL. - [(1) 3.0 TANK(S)]
 REMOTE PULL STATION - STANDARD - INSTALLATION AT SINGLE POINT OF EGRESS

ANSUL R102 (WET CHEMICAL) FIRE PROTECTION SYSTEM - MODEL FSSC

CONTROL PANEL

- STAINLESS STEEL ENCLOSURE
- AGENT STORAGE TANK
- EXPELLANT GAS CARTRIDGE
- ANSUL AUTOMATA RELEASE
- REGULATOR
- KNOCKOUT FOR WIRING MICROSWITCH

NOT TO SCALE

NOTES:

WET CHEMICAL FIRE PROTECTION SYSTEM TO BE ANSUL R-102, DESIGNED IN COMPLIANCE WITH UL 300 REQUIREMENTS. VERIFICATION OF ALL COOKING EQUIPMENT MAKE, MODEL AND LOCATION REQUIRED FOR ALL FIRE PROTECTION SYSTEMS. ALL FIRE SYSTEM PIPING IS STANDARD TO THE RIGHT END OF THE HOOD UNLESS A WALL IS LOCATED ON THE RIGHT END. ANSUL AUTOMATA RELEASE TO BE LOCATED WITHIN 60" OF HOOD.

THE BASIC FIRE SYSTEM DOES NOT INCLUDE THE FOLLOWING:
 FULL DUMP TEST OTHER THAN WHAT IS SPECIFIED PER THE INSTALLATION MANUAL, OR TO SATISFY A STATE OR LOCAL CODE. PERMIT AND TESTING FEES ARE NOT INCLUDED UNLESS NOTED UNDER THE EQUIPMENT SCHEDULE FOR THE FIRE SYSTEM.
 MORE THAN TWO TRIPS TO THE JOBSITE OR SPECIAL TRANSPORTATION, OR OVERNIGHT LODGING REQUIREMENTS IN REMOTE AREAS. NORMAL TRAVEL DISTANCE IS FIRST 50 MI. (80.4 KM) FROM OFFICE.
 SPECIAL CLASSES OR ADDITIONAL LABOR FOR ACCESS TO SECURITY SENSITIVE AREAS.
 INSTALLATION OF GAS SHUT-OFF VALVE.
 SPECIAL DRAWINGS REQUIRED TO SATISFY STATE OR LOCAL CODE. PLAN EXAMINATION FEES, PE OR FS APPROVAL STAMP.
 UNION LABOR, GOVERNMENT LABOR, OR PREVAILING WAGES REQUIRED FOR FINAL FIELD HOOKUP.
 ANY AND ALL ELECTRICAL COMPONENTS/CONNECTIONS REQUIRED TO SHUT DOWN FANS, SHUT OFF DEVICES FOR ELECTRIC COOKING EQUIPMENT (SHUNT TRIP BREAKER), OR ACTIVATE AN ALARM SYSTEM, ETC.
 ANY DISMANTLING OR REASSEMBLY REQUIRED TO GAIN ACCESS TO THE FIRE SUPPRESSION PIPING LOCATED ON THE TOP OF THE HOOD.
 ROUGH-IN HOOD CONDUIT FOR REMOTE PULL STATION OR GAS VALVE (FLUSH MOUNTED PULL STATION).
 INSTALLATION OF MORE THAN (1) REMOTE PULL STATIONS OR DISTANCES GREATER THAN 20 FT (6.1M).
 PARTS OR LABOR REQUIRED TO CORRECT PIPING DUE TO COOKING EQUIPMENT CHANGES OR DEVIATION FROM PLANS, OR ANY CHARGES FOR MISSING OR ADDITIONAL PARTS OTHER THAN THOSE INDICATED ON THE FIRE SUPPRESSION DETAIL.

CONNECTION TO BUILDINGS ALARM

CONNECTION TO COOKING EQUIPMENT SHUT DOWN

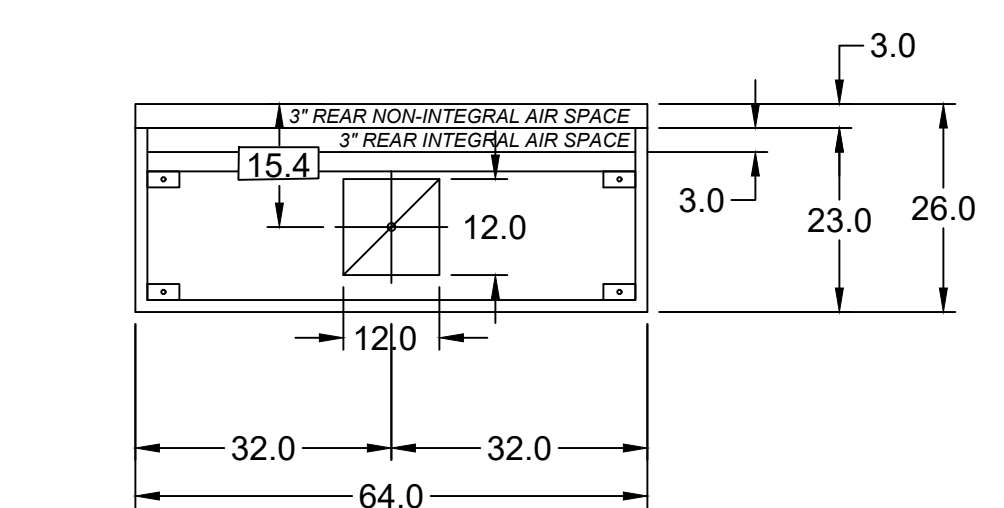
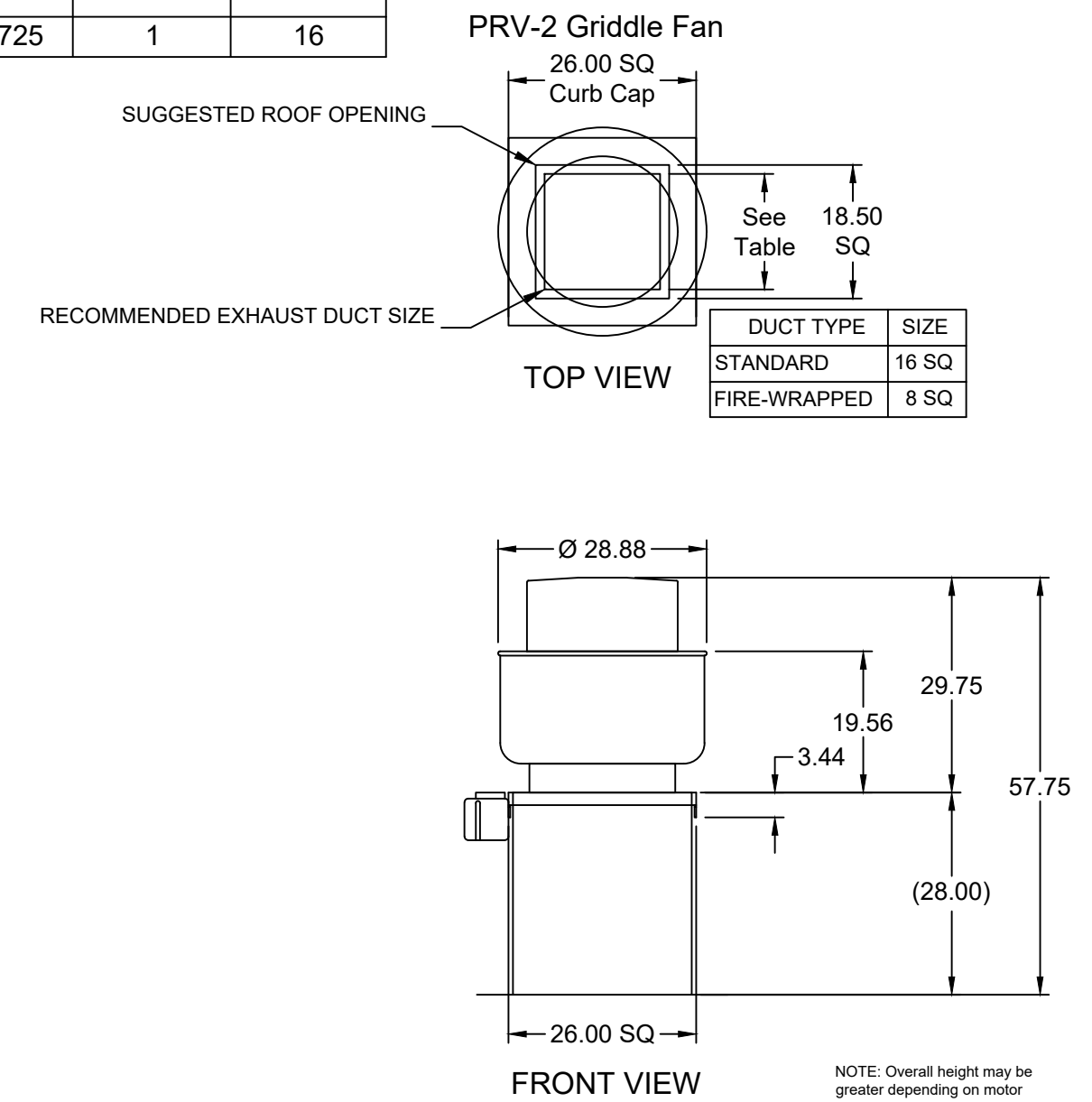
CONNECTION TO FAN SHUT DOWN

DUCT TYPE SIZE

DUCT TYPE	SIZE
STANDARD	16 SQ
FIRE-WRAPPED	8 SQ

NOTES:

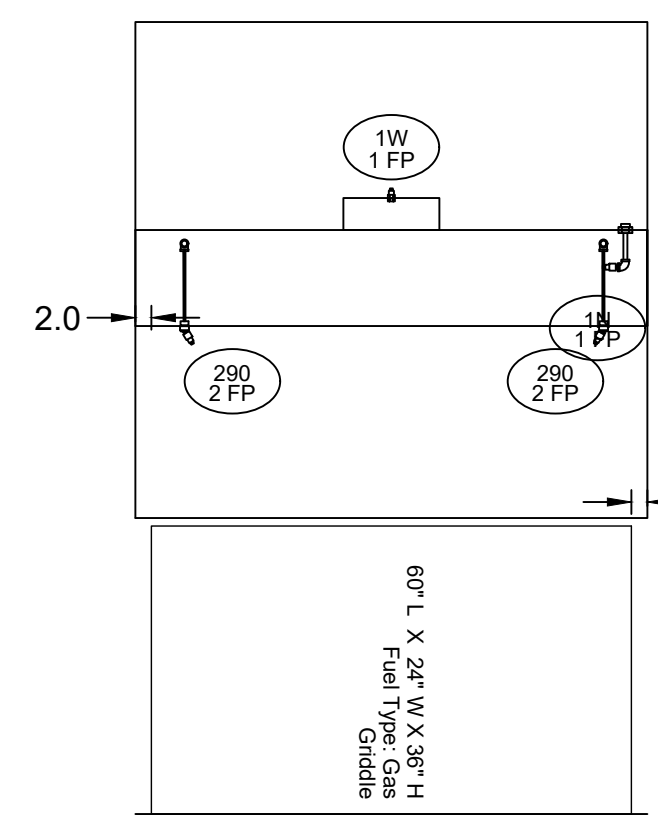
- DENOTES FIELD INSTALLATION
- DENOTES FACTORY INSTALLATION
- DO NOT USE BLACK WIRE ON SNAP-ACTION SWITCH IN NORMAL INSTALLATION. BLACK WIRE TO BE USED ONLY FOR EXTRANEOUS ALARM LIGHT CIRCUITS, ETC.



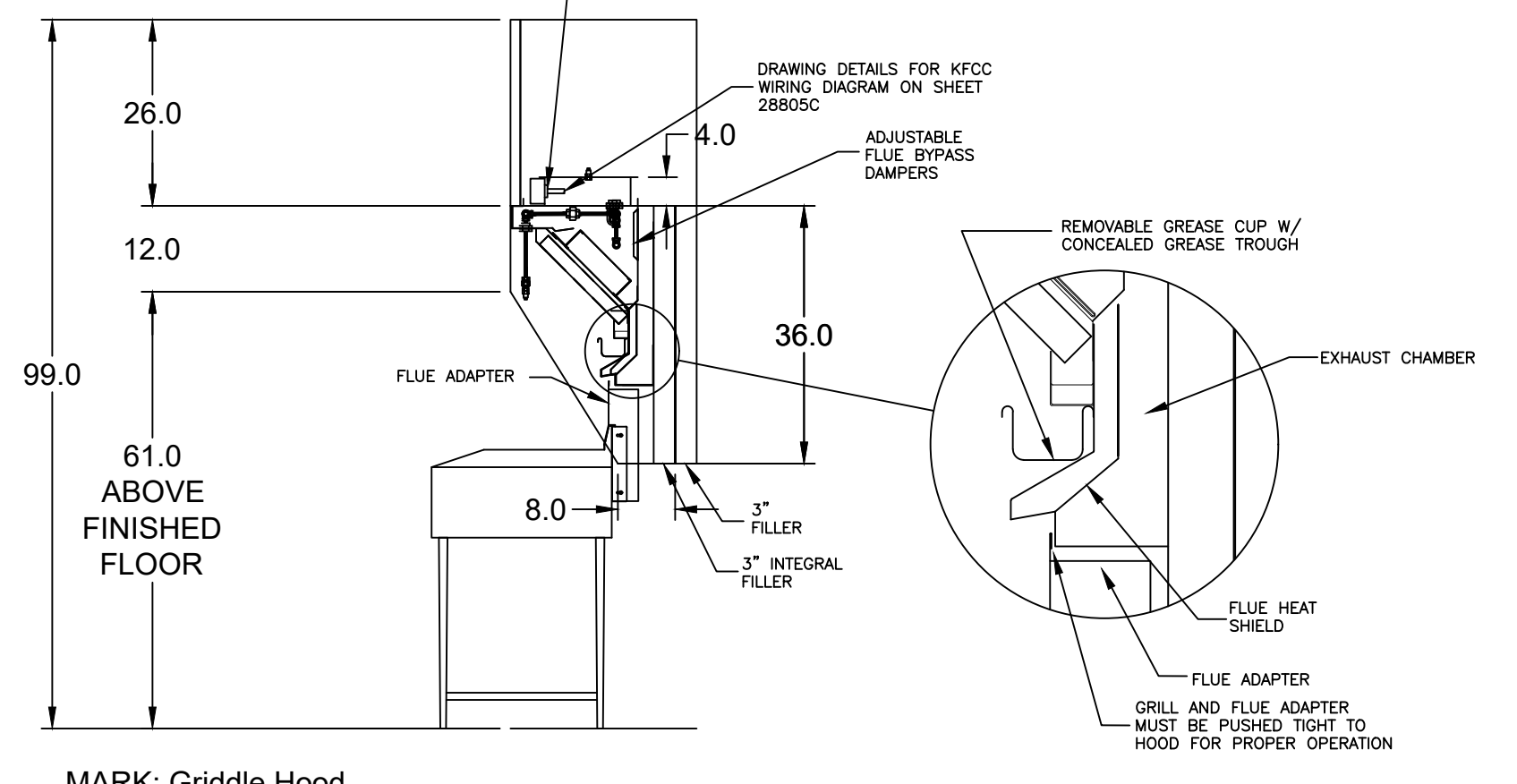
MARK: Griddle Hood - SECTION 1 PLAN VIEW

MUST USE WITH MAGIKITCH'N MODEL MKG-C-60

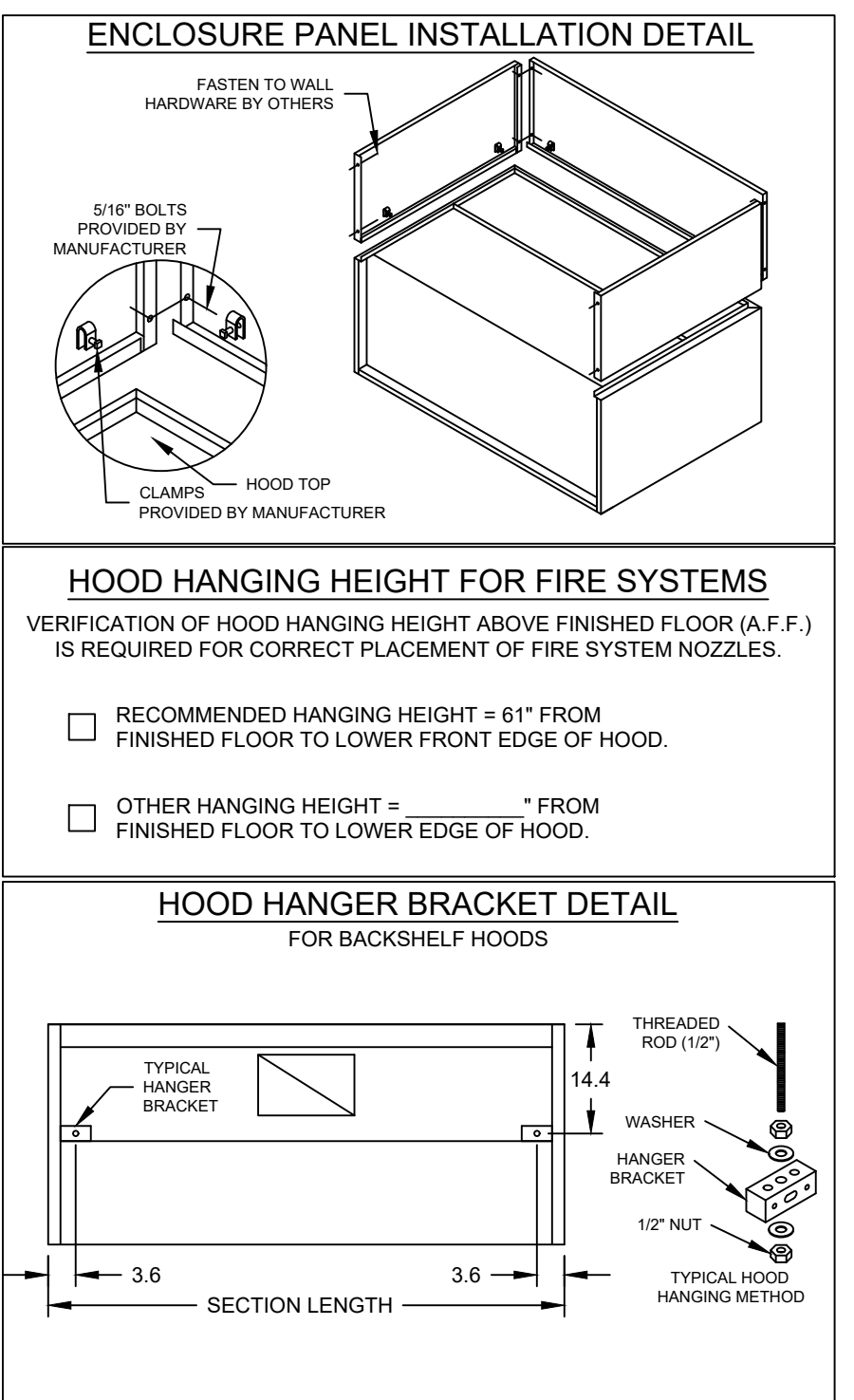
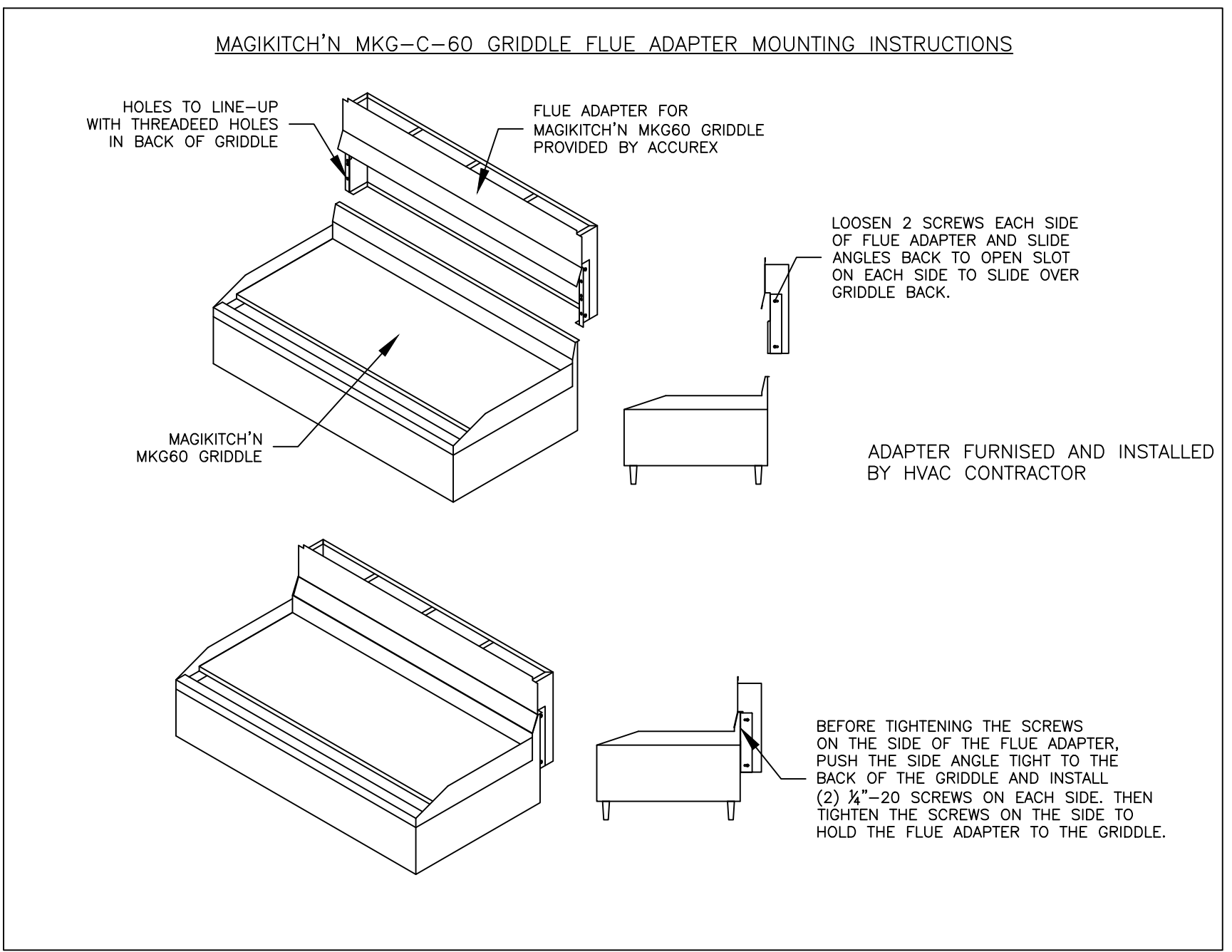
VERIFY MAGIKITCHEN OR ANETS GRILL



SECTION 1 ELEVATION VIEW



MARK: Griddle Hood SECTION VIEW



ACCUREX

PROJECT 3/24/2023

MARK

CULVERS-METRO L PROTOTYPE_VG_NODH

GRIDDLE HOOD WITH CLEAN PIPING AND DETECTION

FIRE SUPPRESSION-GRIDDLE HOOD

ACCUREX - WI, IA
 PHILLIP KRAFT
 PHILLIP.KRAFT@ACCUREX.COM
 262-227-7885

© 2023

ALABAMA LICENSED PROFESSIONAL ENGINEER
 MODEL JOHN LARSON

NEW CULVERS RESTAURANT
 2007 Winchester Road
 Huntsville, AL 35811
 County of MADISON

OWNER:
 S & L Properties Huntsville LLC
 2651 Kyring Court
 Portage, WI 53901
 Jeff Liegel, Member
 608-742-2893

OLLMANN ASSOCIATES ARCHITECTS, P.C.
 200 South State Street
 Belvidere, Illinois 61008
 815-544-7790 Phone
 © O.A.A. All rights reserved. Any copying, transmission or disclosure subject to O.A.A. written approval.

GRIDDLE HOOD/EXHAUST SCHEDULE & DETAILS

Date: 4-7-2023
 Revision:

2023-006

M202

HOOD INFORMATION																	
HOOD NO.	MARK	MODEL	HOOD DIMENSIONS (IN.)			HOOD CONSTR.	COOKING LOAD / DUTY RATING	EXHAUST					SUPPLY		TOTAL WEIGHT LBS.	SECTION LOCATION	
			LENGTH	WIDTH	HEIGHT			TOTAL CFM	COLLAR(S)			MUA CFM	AC CFM				
1	FRYER HOOD ITEM 59	XXEP-83-S	83	TOP 23 BOT 3	FRT 12 BACK 36	430 SS WHERE EXPOSED	MEDIUM	1500	12	12		1500	0.518			169.1	SINGLE

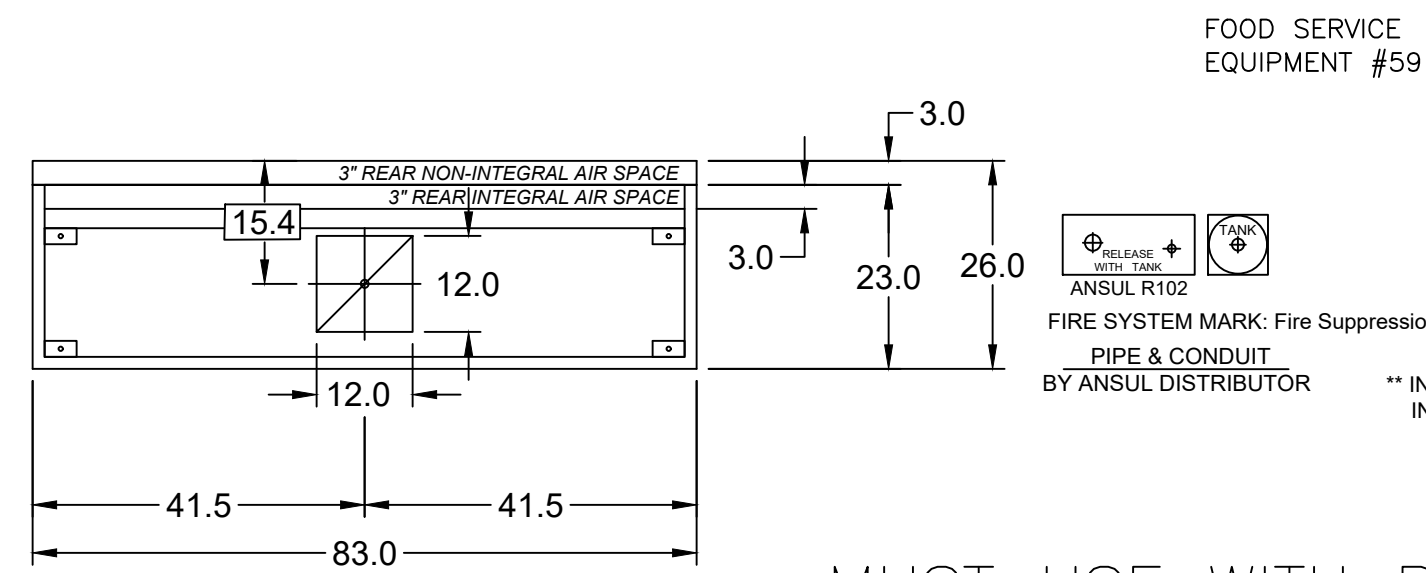
HOOD INFORMATION																	
HOOD NO.	MARK	LIGHTING DETAILS			GREASE FILTRATION DETAILS			UTILITY CABINET(S)									
		FIXTURE TYPE	QTY	FOOT CANDLES	TYPE / MODEL MATERIAL	QTY	SIZE (IN.)	LOCATION	FIRE SYSTEM		CONTROLS						
1	FRYER HOOD ITEM 59				X-TRACTOR	5	16										
					STAINLESS STEEL	0	20										

HOOD OPTIONS		SPECIAL DESIGN REQUESTS	
UL 710 LISTED W/ OUT EXHAUST FIRE DAMPER - UL #R25625		SDR #K1100559 - NEW PITCO 4L FRYER FLUE BYPASS SYSTEM	
BACK NON-INTEGRAL AIR SPACE - 3 IN WIDE		SDR #K1700974 - CULVERS 4VAT 2FIRE PROCESS - FRYER HOOD	
26 IN HIGH CEILING ENCLOSURES - FRONT LEFT RIGHT - FIELD INSTALLED			
FACTORY MOUNTED EXHAUST COLLAR(S)			
PERFORMANCE ENHANCING LIP (PEL) TECHNOLOGY			
STANDING SEAM CONSTRUCTION FOR SUPERIOR STRENGTH			

Direct Drive Upblast Centrifugal Roof Exhaust Fan													
MARK INFORMATION			FAN INFORMATION					MOTOR INFORMATION					
QTY	MARK	MODEL	VOLUME (CFM)	TOTAL EXTERNAL SP (IN WG)	FAN RPM	OPERATING POWER (HP)	WEIGHT (LB.)	SIZE (HP)	V/C/P	ENCLOSURE	MOTOR RPM	WINDINGS	NEC FLA*
1	PRV-3 Fryer Fan	XCUE-140-VG	1,500	1	1,349	0.46	92	1	115/60/1	OP	1725	1	16

NEC FLA - Based on table 430.250 or 430.248 of National Electrical Code 2020. Actual motor FLA may vary for sizing thermal overload, consult factory

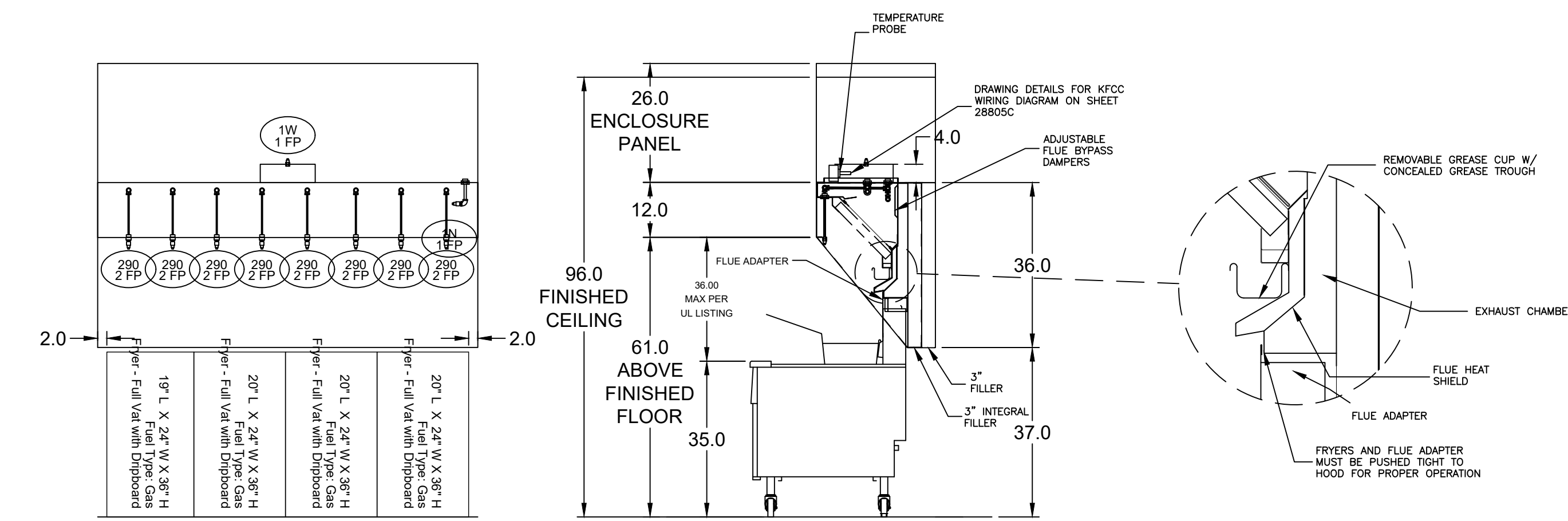
PRV-3 Fryer Fan : SELECTED OPTIONS AND ACCESSORIES	
One piece fully welded windband	
Tapered bushing wheel hub	
Breather tube outlet area min. 4.4 sq. in. (sizes 99-480), 2.0 sq. in. (sizes 60-95)	
Min. windband material thickness: 0.051" aluminum (060-240), 0.064" aluminum (240HP, 240XP), 0.080" aluminum (sizes 300-480)	
Larger Curb Cap Size - 26 Square	
UL/cUL 762 Listed - "Power Ventilators for Rest. Exh. Appliances"	
Switch, NEMA-3R, Toggle, Shipped with Unit	
Hinge, Factory Installed	
High Temp Curb Seal Rated for Continuous Duty at 1500 F (Factory Attached)	
Grease Trap (PN 475538)	
Clean-out Port - Factory Installed	



MARK: Fryer Hood PLAN VIEW

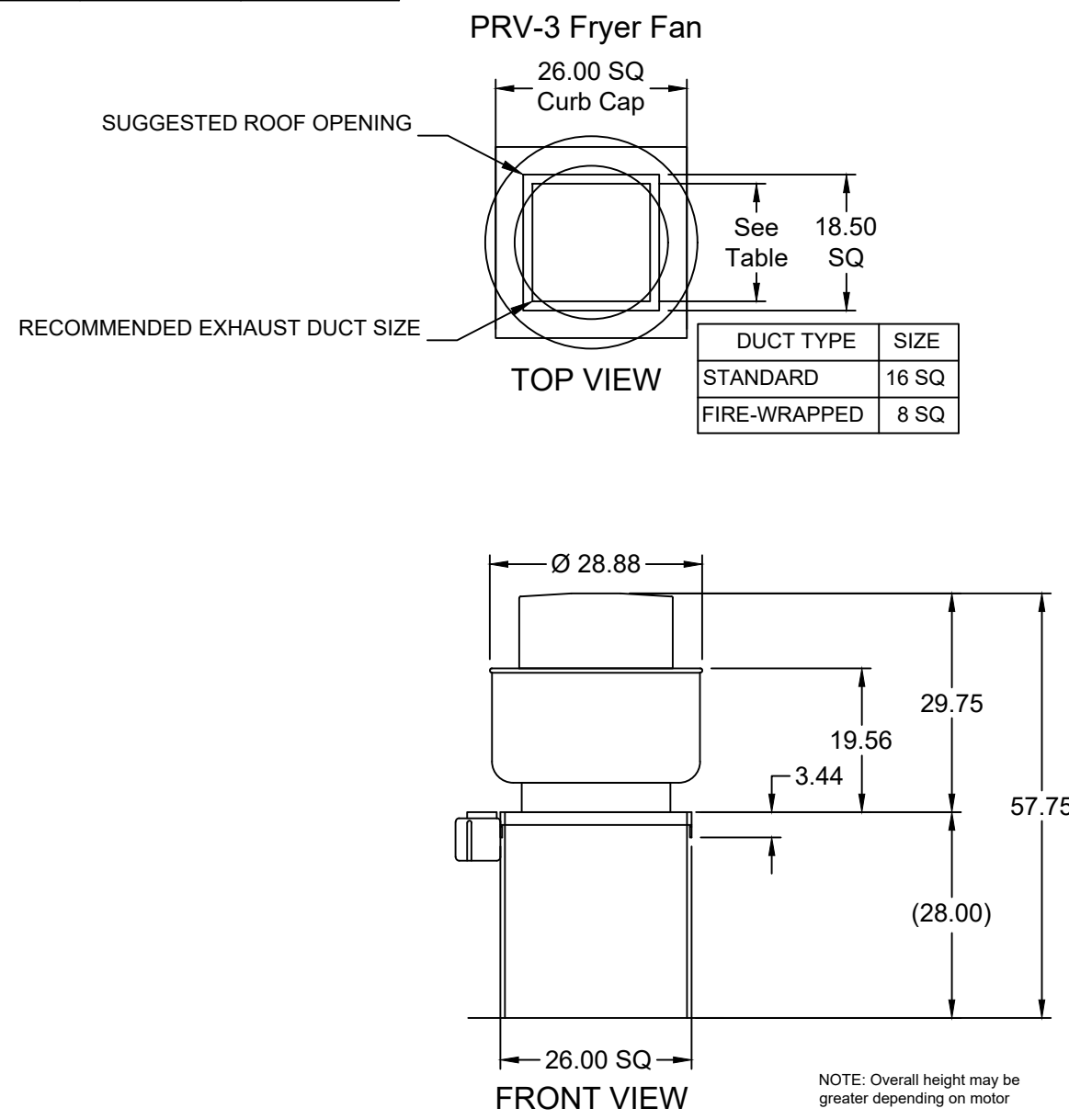
MUST USE WITH PITCO MODEL CU-SSH60W

PITCO FRYER 4-VAT FLUE ADAPTER



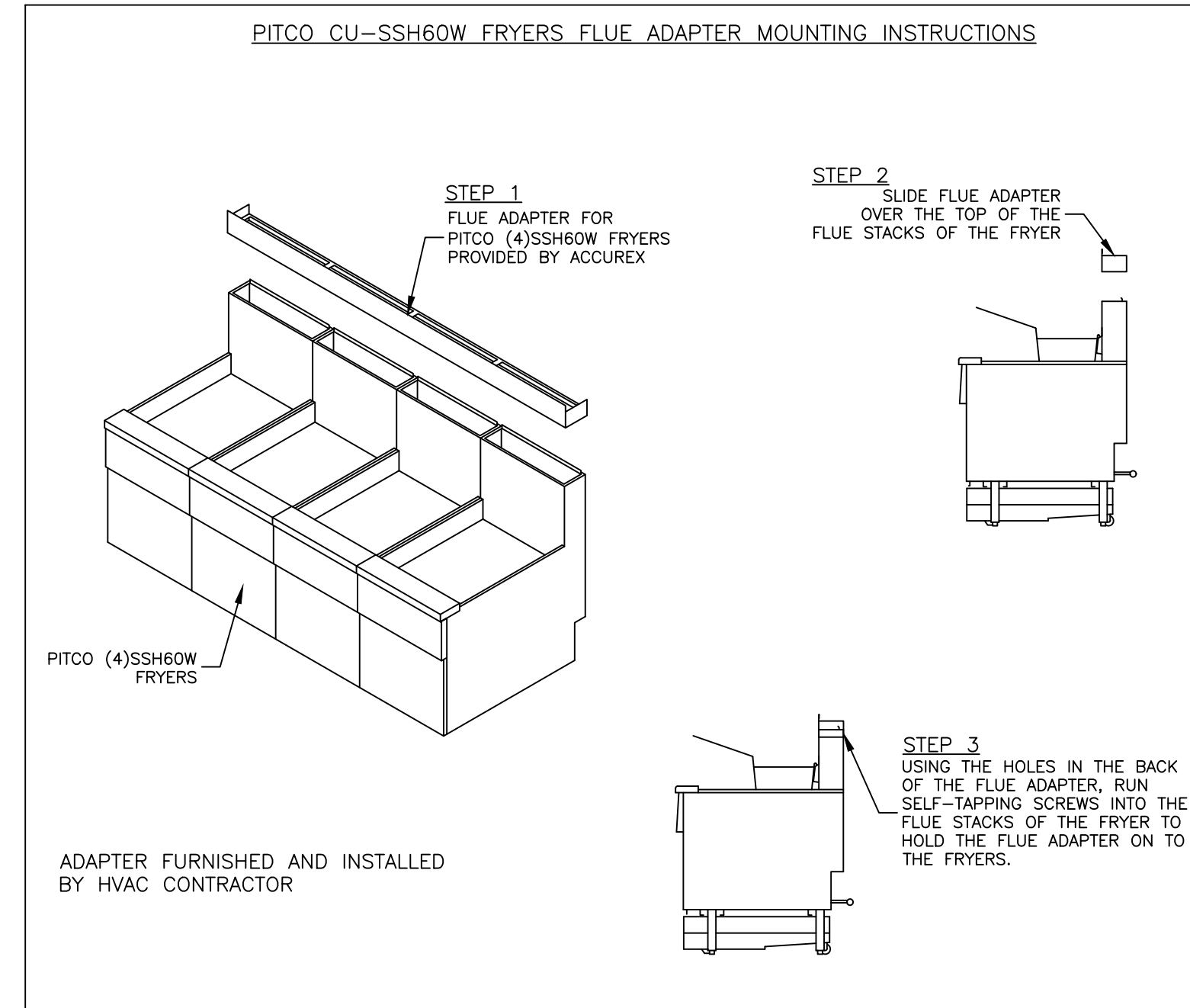
SECTION 1 ELEVATION VIEW

MARK: ITEM #59 SECTION VIEW



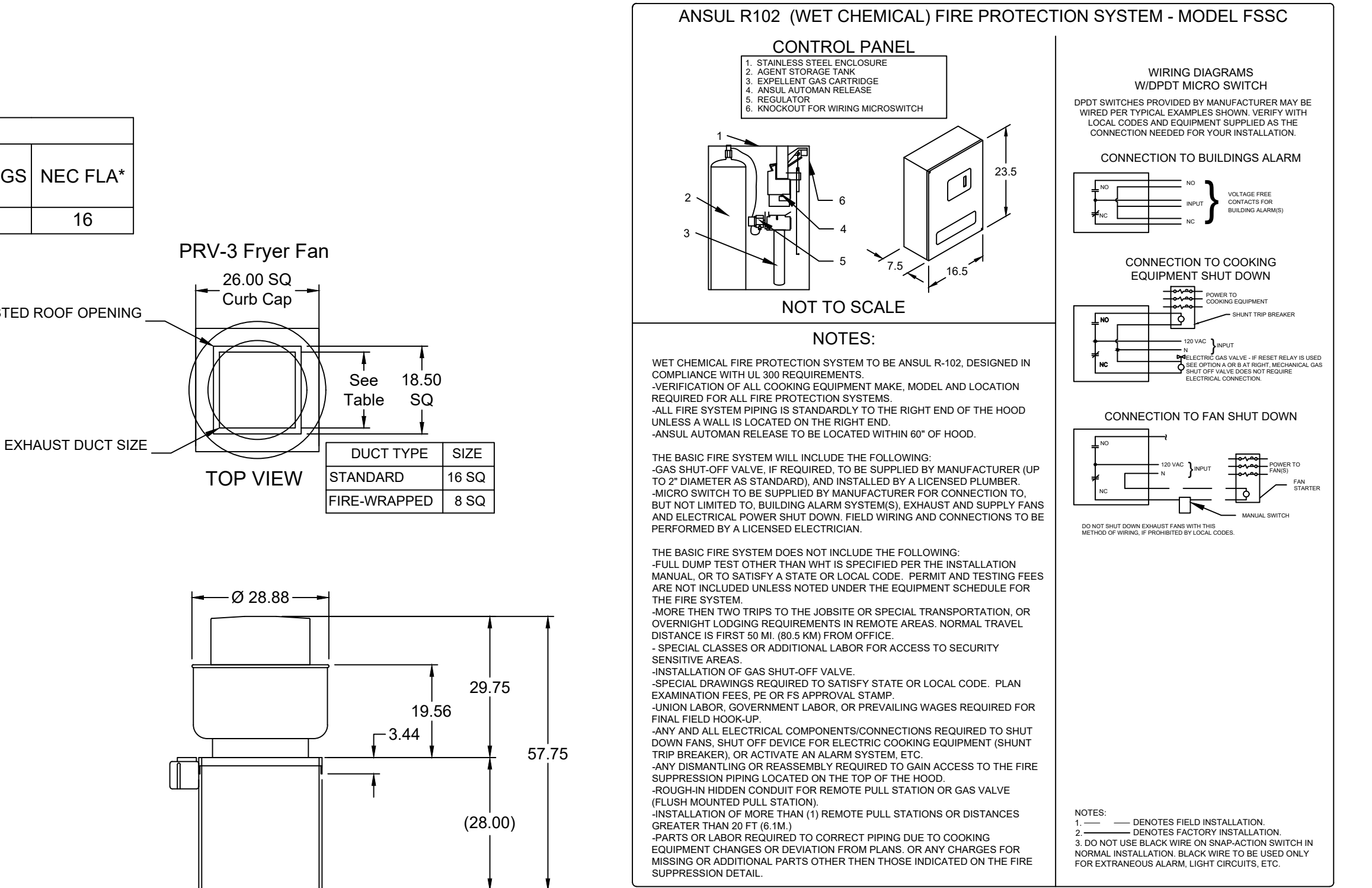
FRONT VIEW

NOTE: Overall height may be greater depending on motor



ADAPTER FURNISHED AND INSTALLED BY HVAC CONTRACTOR

FIRE SYSTEM INFORMATION									
MARK	MODEL	LOCATION	FLOW POINTS		SUPPLY LINE	DETECTION			
			HOODS	PCU					
FIRE SUPPRESSION-FRYER HOOD	ANSUL R-102 WET CHEMICAL	REMOTE MOUNTED	18 UTILIZED	22 AVAILABLE	CONTINUOUS	FUSIBLE LINK			
						MARK(S) PROTECTED BY FIRE SYSTEM			
						FRYER HOOD SECTION 1			



ANSUL R102 (WET CHEMICAL) FIRE PROTECTION SYSTEM - MODEL FSSC

CONTROL PANEL

NOT TO SCALE

NOTES:

ENCLOSURE PANEL INSTALLATION DETAIL

HOOD HANGING HEIGHT FOR FIRE SYSTEMS

HOOD HANGER BRACKET DETAIL FOR BACKSHELF HOODS

ACCUREX

CULVERS-METROL
PROTOTYPE_VG_NODH
PROJECT 3/24/2023
MARK
ACCUREX - WI, IA
PHILLIP KRAFT
PHILLIP.KRAFT@ACCUREX.COM
262-227-7885

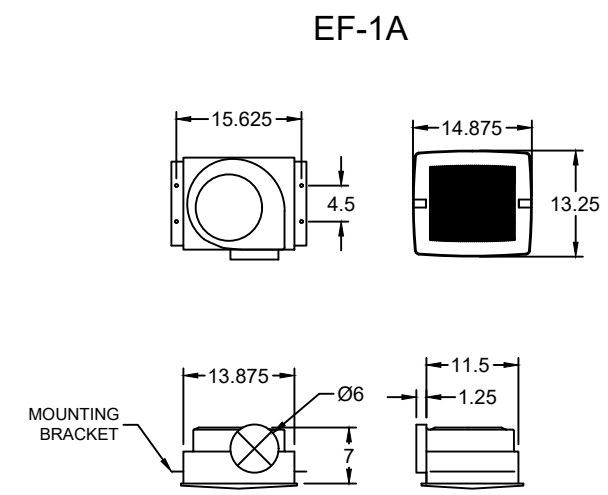
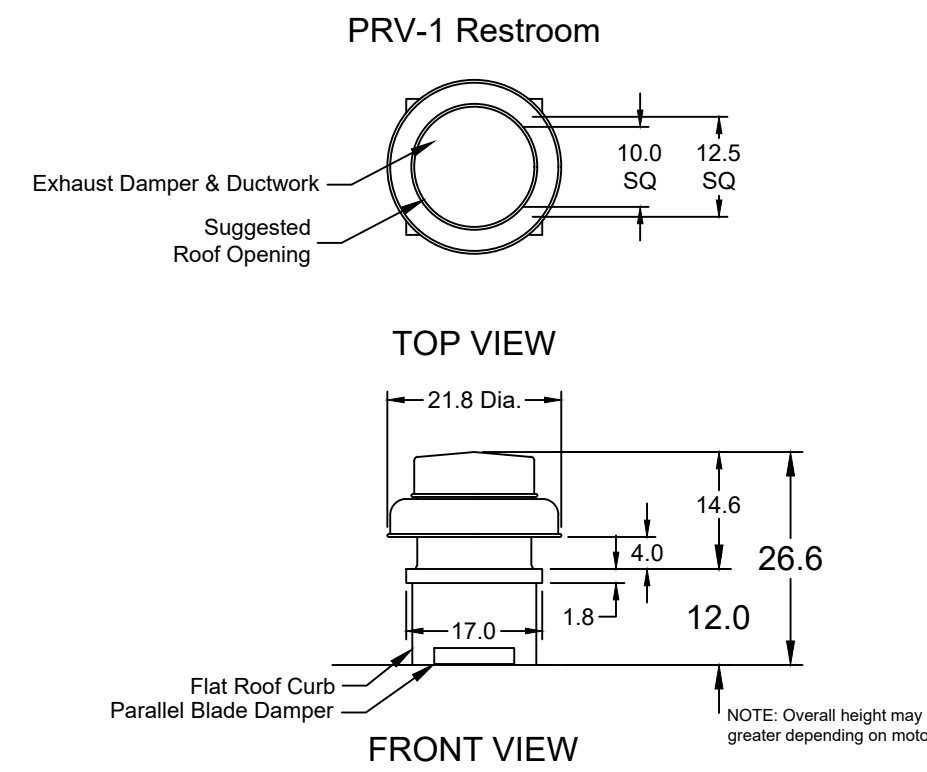
© 2023
ALABAMA LICENSED PROFESSIONAL ENGINEER
JOHN LARSON
NEW CULVERS RESTAURANT
2007 Winchester Road
Huntsville, AL 35811
County of MADISON

OWNER:
S & L Properties Huntsville LLC
2005 Kyring Court
Portage, WI 53901
Jeff Liegel, Member
608-742-2893

OLLMANN ASSOCIATES ARCHITECTS, P.C.
200 South State Street
Belleville, Illinois 61008
815-544-7790 Phone
© O.A.A. All rights reserved. Any copying, transmission or disclosure subject to O.A.A. written approval.

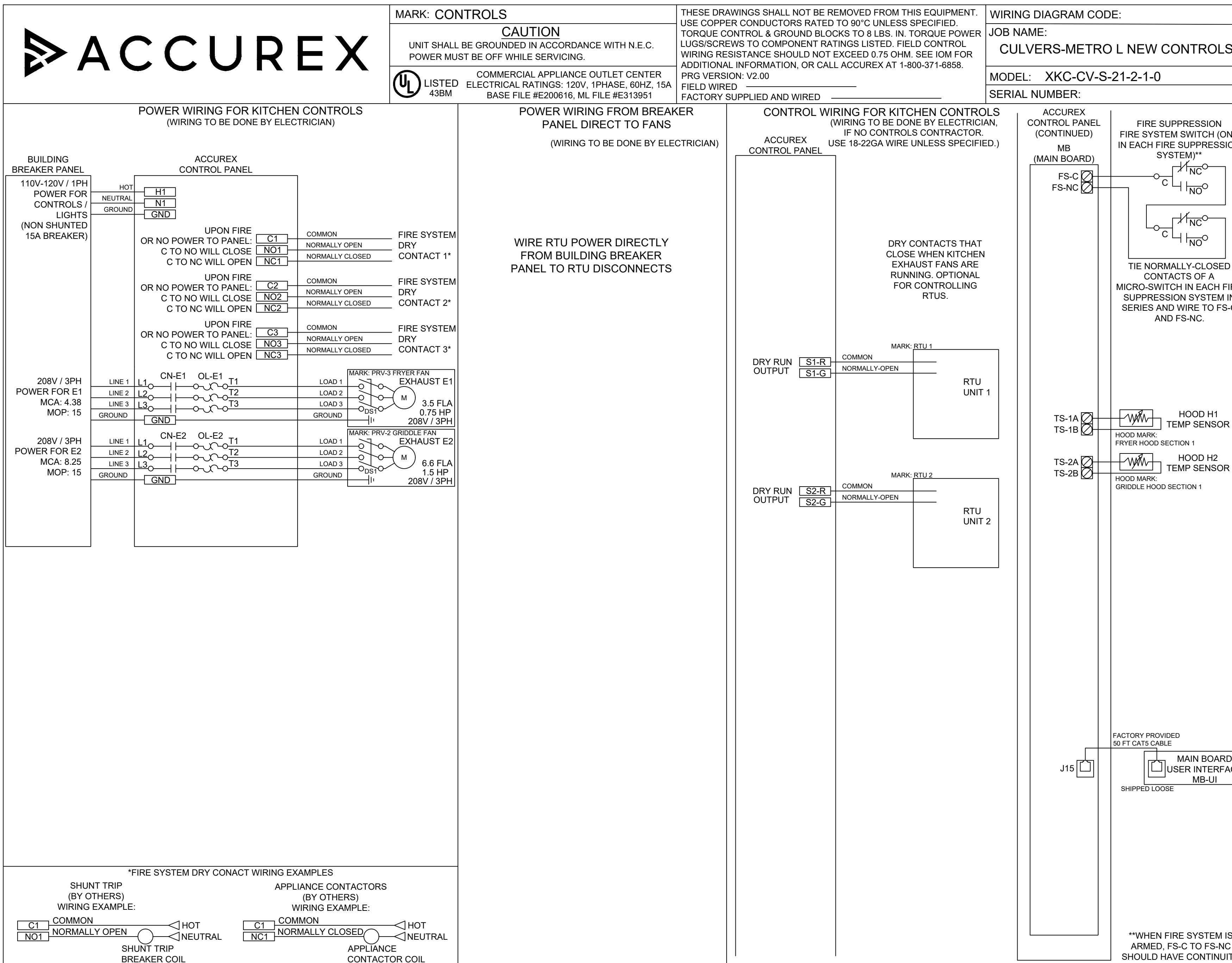
Revision:
Date: 4-7-2023

2023-006
M203



EQUIPMENT SCHEDULE				
ELECTRICAL CONTROL BOX		MARK: XKC		MARK: XKC
DESCRIPTION / ACCUREX MODEL	MOUNTING LOCATION (CONTROL PANEL / SWITCHES)	EXHAUST FAN QTY	SUPPLY FAN QTY	POWER FREQUENCY
KITCHEN FAN CONTROL CENTER / XKC SHIP LOOSE / SHIP LOOSE FOR REMOTE MOUNTING		2	0	60 CYCLE
CONTROL PANEL ENCLOSURE - 16 GA 304 STAINLESS STEEL ENCLOSURE (NEMA-1) - DIMENSIONS 18 X 20 X 6				
WIRING DIAGRAM # T100-2 - 20				
STARTERS PROVIDED IN CONTROL PANEL - QTY 2				
USER INTERFACE CONTROL - QTY 1				
INTEGRATED EXHAUST TEMPERATURE INTERLOCK SYSTEM				
-FACTORY MOUNTED EXHAUST TEMPERATURE SENSORS - QTY 2				
-COMPLIES WITH INTERNATIONAL MECHANICAL CODE 2006 SECTION 507.2.1.1				
TURN ON EXHAUST IN FIRE				
THERMAL OVERLOADS IN CABINET				

EQUIPMENT SCHEDULE												
Direct Drive Centrifugal Roof Exhaust Fan		MARK: PRV-1 Restroom		Motor Information								
Qty	Accurex Model	Volume (CFM)	SP (in wg)	FRPM	Operating Power (hp)	Weight (Lb.)	Size (hp)	V/CP	Encl.	Motor RPM	Windings	FLA
1	XRED-090-VG	375	0.5	1465	0.060	30	0.1	115/60/1	OP	1725	1	NA
OPTIONS AND ACCESSORIES												
UL/ULC 705 Listed - "Power Ventilators"												
Switch, NEMA-1, Toggle, Shipped with unit												
Curb Seal (Attached)												
Dampers: WD-100-FB-10X10, Gravity Operated (Loose)												
Vari-Green electronically commutated motor, speed dial adjustment on motor												
Roof Curb-Guh, GPl-17-10-G12, Undersized 1.5" total												



EQUIPMENT SCHEDULE												
Ceiling Exhaust Fan		MARK: EF-1 Exhaust Fan		Motor Information								
Qty	Accurex Model	Volume (CFM)	SP (in wg)	FRPM	Operating Power (hp)	Weight (Lb.)	Size (hp)	V/CP	Encl.	Motor RPM	Windings	FLA
2	XCR-B80	75	0.125	885	0.01	10	0.0	115/60/1	OP	900	1	NA
OPTIONS AND ACCESSORIES												
UL/ULC 705 Listed - Electric fan												
Solid State Speed Control, 6.0 amp, mounted and wired												
Round Hooded Wall cap, (PN: WC-6) Mounted and Wired)												
Designer Grille												
Round duct connection												
Polypropylene Wheel Material												
Energy Star Rated												

FOR TECHNICAL SUPPORT ON ACCUREX CONTROLS PLEASE CALL ACCUREX TECHNICAL SUPPORT: 1-800-371-6858
SECONDARY CONTACTS ARE: AARON VAN KREY 715.841.8521 TYLER SCHILLING 715.841.8749

Thank you for your interest in Accurex



SUBMITTAL

Please return one approved print to your Greenheck Representative including signature, date, and answers to all submittal "verify" notes and questions. Fabrication will not begin until after approved drawings are received.

- APPROVED AS SUBMITTED
- APPROVED AS NOTED
- REJECTED - REVISE AND RESUBMIT

SIGNATURE _____ DATE _____

REV	DESCRIPTION	DATE	BY	DATE

ACCUREX
 TITLE: CULVER'S MASTER TEMPLATE
 SCALE: 1/24
 DRAWING NO.: C28805C

VENTILATION SYSTEM NOTES

Greenheck ventilators are designed in compliance with all national codes: NFPA # 96, national electric code, BOCA, uniform mechanical code, international mechanical code, and southern building conference. See national evaluation report #436 for allowable values, and/or conditions of use concerning material presented in this document. Local codes may vary. It is the responsibility of the purchaser to submit drawings to local authorities.

Exhaust and supply air volumes are to be maintained within -5% to +10% tolerance of values indicated. Static pressure(s) indicated are for the ventilator at the duct connection(s) only.

The grease filter face velocities are based on the filter manufacturers recommendations for maximum grease extraction. Inlet opening air velocities for waterwash, dry cartridge and high velocity cartridge filters manufactured by Greenheck are designed to deliver maximum grease extraction.

Hoods installation (by others unless otherwise noted) shall be in accordance with NFPA # 96 and applicable building codes.

PROPRIETARY INFORMATION NOTICE

This document is and contains confidential trade secret information of the company and remains property of the company and is to be returned upon request. Neither it nor information it contains may be reproduced or disclosed to persons not having a need-to-know consistent with the purpose of the loan document without written permission.

© 2023

ALABAMA
LICENSED
MECHANICAL
ENGINEER
No. 58825
JOHN LARSON

NEW CULVER'S RESTAURANT
2007 Winchester Road
Huntsville, AL 35811
County of MADISON

Culver's Franchising System, Inc.
1240 Water Street
Prairie du Sac, WI 53578
608-643-7880

OWNER:
S & L Properties Huntsville LLC
2651 Kinking Court
Portage, WI 53901
Jeff Liegel, Member
608-742-2893

OLLMANN ASSOCIATES ARCHITECTS, P.C.
200 South State Street
Belvidere, Illinois 61008
815-544-7790 Phone
© O.A.A. All rights reserved. Any copying, transmission or disclosure subject to O.A.A. written approval.

FAN SCHEDULE & DETAILS

Date: 4-7-2023

Revision:

2023-006

M204