

*ROD AND NUTS TO BE SUPPLIED BY INSTALLING CONTRACTOR
HANGING ANGLE IS PRE-FINISHED AT FACTORY

HANGING ANGLE DETAILS

HOOD STYLE / MODEL	450 DEGREES cfm/ft.	600 DEGREES cfm/ft.	700 DEGREES cfm/ft.
CANOPY ND-2	150	200	250
CANOPY ND-2 W/ END PANELS	105	140	175
SLOPED SND-2	228	294	-
ISLAND ND-2WI	269	300	350
ISLAND ND-2I	346	422	475

ETL HOOD LISTING DETAIL

EXHAUST CFM = LENGTH OF HOOD X CFM/LIN.FT. (LOAD)
SUPPLY CFM = EXHAUST CFM X PERCENTAGE REQUIRED
TOTAL DUCT AREA (sq. in.) = 144 X CFM(C)
DUCT LENGTH = TOTAL DUCT AREA / DUCT WIDTH

*CAPTIVE-AIR HOODS FOR DUCTS ARE CALCULATED USING AN EXHAUST VELOCITY OF 1000-1800 FPM AND A SUPPLY VELOCITY OF 1800 FPM

CALCULATIONS UTILIZED

CAPTIVE-AIR HOODS BUILT IN COMPLIANCE WITH:

ETL LISTED HOODS
UL STANDBY 701
Intertek
UL 1036-1001 & 1036-1002
Listed under ETL File number 3054804-001/002

BUILDING CODES

CAPTIVE-AIR HOODS HAVE OPTIONAL CLEARANCE REDUCTION SYSTEMS AVAILABLE AS FOLLOWS:

MATERIAL	CLEARANCE REDUCTION SYSTEM
NON-COMBUSTIBLE	NONE REQUIRED
LIMITED-COMBUSTIBLE	3" UNINSULATED STANDOFF
COMBUSTIBLE	1" INSULATED STANDOFF

CLEARANCE TO COMBUSTIBLES

INSTALLATION

- ALL ELECTRICAL "FIELD" CONNECTIONS AND RELATED INTERCONNECTIONS BY ELECTRICAL CONTRACTORS.
- ALL PLUMBING "FIELD" CONNECTIONS AND RELATED INTERCONNECTIONS BY PLUMBING CONTRACTORS.
- HANGING BRACKETS LOCATED AND WELDED AS SHOWN ON PLANS. ALL OTHER HANGER MATERIALS PROVIDED BY INSTALLING CONTRACTORS.
- ALL CONNECTIONS FROM CAPTIVE-AIR HOOD PER MECHANICAL CONTRACTOR'S PLANS.
- COOKING EQUIPMENT TO SHUT OFF IN EVENT OF FIRE.
- EXHAUST FANS TO TURN ON IN EVENT OF FIRE.
- ALL LIGHT FIXTURES SHOWN INSTALLED BY CAPTIVE-AIR ARE FACTORY PREWIRED. INTERCONNECTIONS BETWEEN HOODS AND TO SWITCHES ARE BY ELECTRICAL CONTRACTOR.
- LAMPS FOR LIGHT FIXTURES BY INSTALLING CONTRACTORS.
- SEISMIC RESTRAINTS ARE RESPONSIBILITY OF INSTALLING CONTRACTOR.
- INSTALLING CONTRACTORS ASSUME ALL RELATED RESPONSIBILITY FOR VERIFICATION OF DIMENSIONAL DATA CONTAINED ON THESE DOCUMENTS FOR ACCURACY, INTEGRATION AND ADMINISTRATION OF CODE REQUIREMENTS IN EFFECT PRIOR TO ANY RELEASE FOR PRODUCTION OF EQUIPMENT SHOWN.

BALANCE

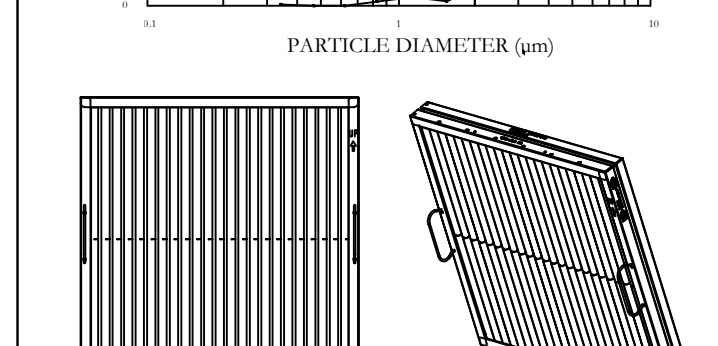
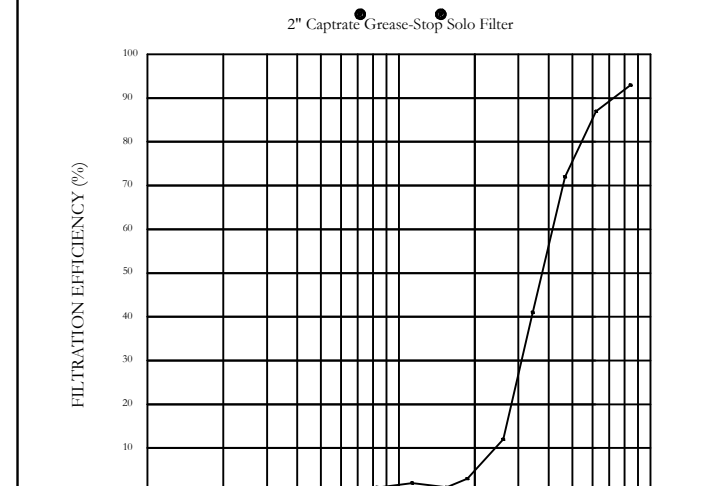
- KITCHEN HOODS MUST BE BALANCED WITH KITCHEN.
- KITCHEN SHALL BE NEGATIVE WITH RESPECT TO DINING AREA.
- RESTAURANT SHALL BE POSITIVE WITH RESPECT TO AMBIENT PRESSURE.

ADDITIONAL

- WRITTEN HOOD DIMENSIONS HAVE PRECEDENCE OVER SCALE.
- SIGNED AND "APPROVED" COPIES OF THIS DOCUMENT MUST BE RECEIVED BY THE FACTORY PRIOR TO COMMENCEMENT OF FABRICATION.

GENERAL NOTES

FILTER COLLECTION EFFICIENCY



CaptiveAir Captrate Solo Filter
ETL Listed Grease Extracting Filters
Made From 430 Stainless Steel

FILTER DETAIL

FOR QUESTIONS, CALL THE
Eastern PA Mechanical
REGION 108
PHONE: (267) 504-4126
EMAIL: reg108@captiveaire.com

HOOD INFORMATION - JOB#5316001

HOOD NO	TAG	MODEL	MANUFACTURER	LENGTH	MAX COOKING TEMP	TYPE	APPLIANCE DUTY	DESIGN CFM/FT	TOTAL EXH. CFM	EXHAUST PLENUM RISER(S)				MUA CFM	AC CFM	HOOD CONSTRUCTION	HOOD CONFIG			
										WIDTH	LENG	HEIGHT	DIA				CFM	VEL	SP	END TO END
1	Hood-Left	5430 ND-2-ACPSp-F	CAPTIVEAIRE	7' 0"	450 DEG	I	MEDIUM	175	1225	10"	11"	4'	1225	1604	-0.492"	894	400	430 SS WHERE EXPOSED	LEFT	ALDNE
2	Hood-Right	5430 ND-2-ACPSp-F	CAPTIVEAIRE	7' 0"	450 DEG	I	MEDIUM	175	1225	10"	11"	4'	1225	1604	-0.492"	1017	400	430 SS WHERE EXPOSED	RIGHT	ALDNE

HOOD INFORMATION

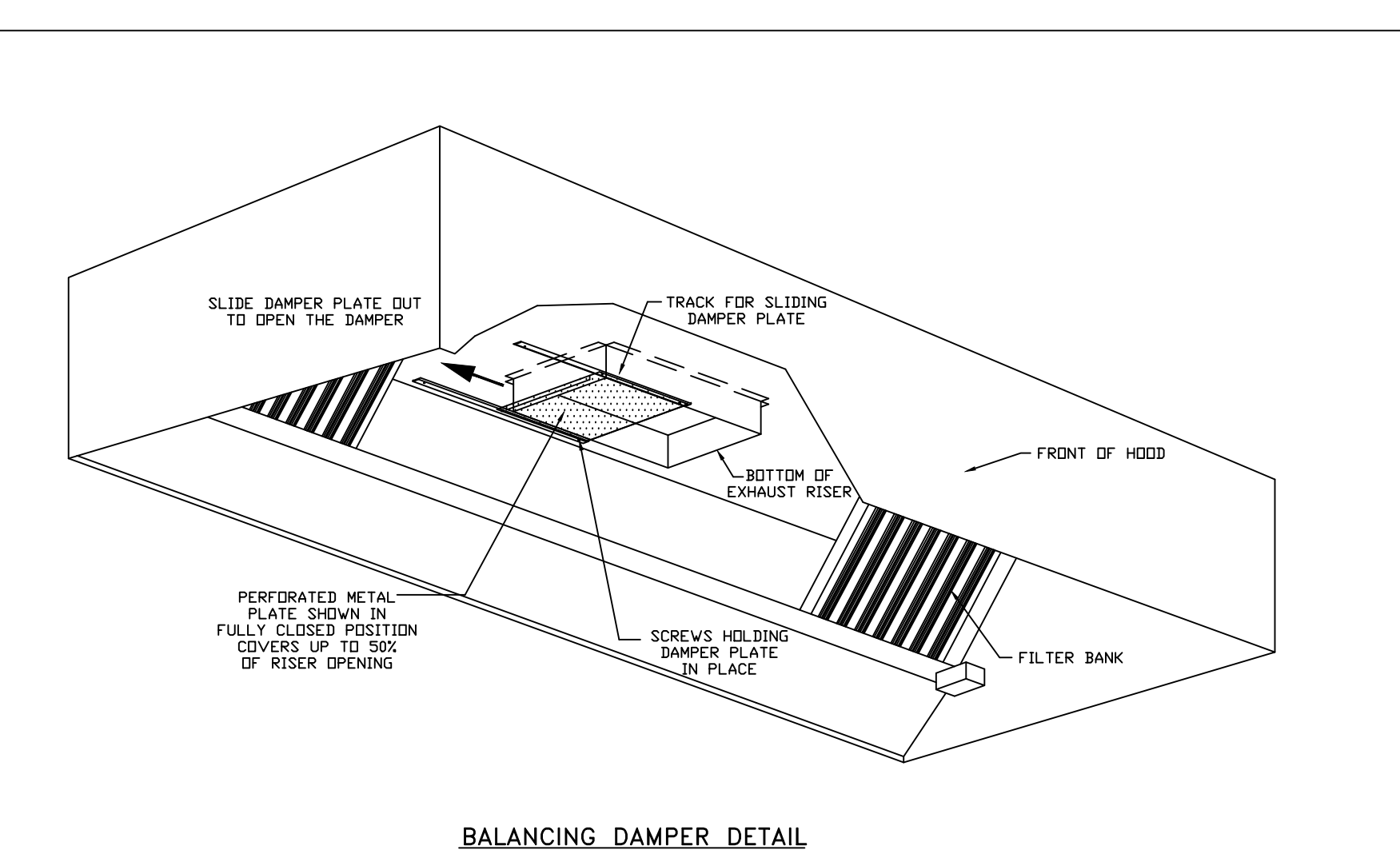
HOOD NO	TAG	TYPE	FILTER(S)				LIGHT(S)				UTILITY CABINET(S)				FIRE SYSTEM	HOOD HANGING WEIGHT
			QTY	HEIGHT	LENGTH	EFFICIENCY @ 7 MICRONS	QTY	TYPE	WIRE GUARD	LOCATION	SIZE	TYPE	SIZE	MODEL #		
1	Hood-Left	CAPTRATE SOLD FILTER	5	20"	16'	85% SEE FILTER SPEC	2	RECESSED ROUND	NO						YES	543 LBS
2	Hood-Right	CAPTRATE SOLD FILTER	5	20"	16'	85% SEE FILTER SPEC	2	RECESSED ROUND	NO	RIGHT	12"x54"x30"	ANSUL R-102	3.0/3.0/3.0		YES	707 LBS

HOOD OPTIONS

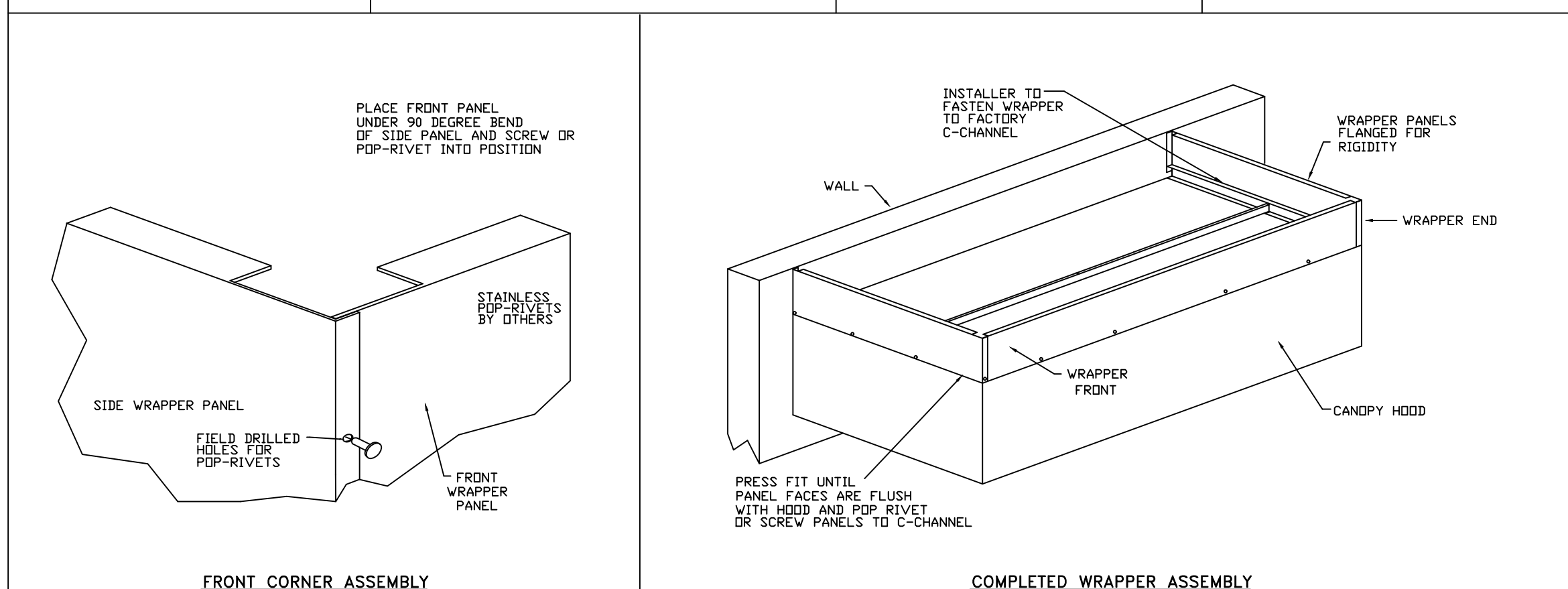
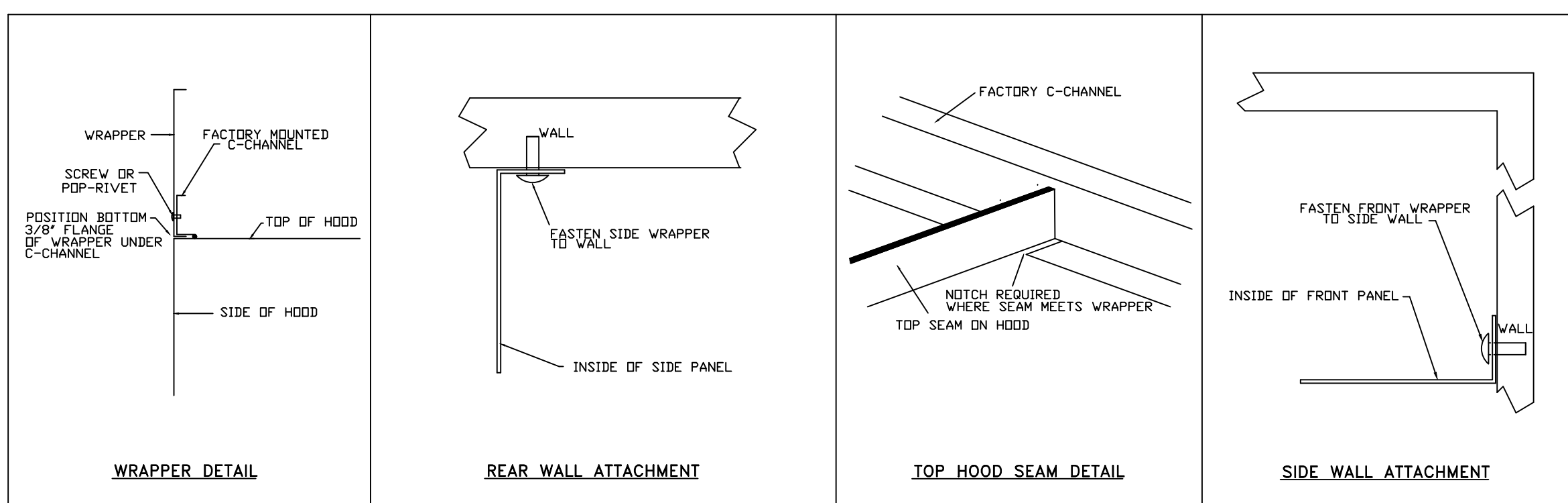
HOOD NO	TAG	OPTION
1	Hood-Left	FIELD WRAPPER 18.00" HIGH FRONT, LEFT. BALANCE DAMPERS. RISER SENSOR INSTALL 6IN PLEN. LEFT VERTICAL END PANEL 27" TOP WIDTH, 21" BOTTOM WIDTH, 80" HIGH INSULATED 430 SS.
2	Hood-Right	FIELD WRAPPER 18.00" HIGH FRONT, RIGHT. BALANCE DAMPERS. RISER SENSOR INSTALL 6IN PLEN. RIGHT VERTICAL END PANEL 27" TOP WIDTH, 21" BOTTOM WIDTH, 80" HIGH INSULATED 430 SS.

PERFORATED SUPPLY PLENUM(S)

HOOD NO	TAG	POS	LENGTH	WIDTH	HEIGHT	TYPE	RISER(S)				
							WIDTH	LENG	DIA	CFM	SP
1	Hood-Left	Front	84"	22"	6'	MUA	8"	26"		447	0.129"
							8"	26"		447	0.129"
							AC		8"	100	0.032"
							AC		8"	100	0.032"
							AC		8"	100	0.032"
							AC		8"	100	0.032"
2	Hood-Right	Front	96"	22"	6'	MUA	10"	24"		508	0.142"
							10"	24"		508	0.142"
							AC		8"	100	0.032"
							AC		8"	100	0.032"
							AC		8"	100	0.032"
							AC		8"	100	0.032"

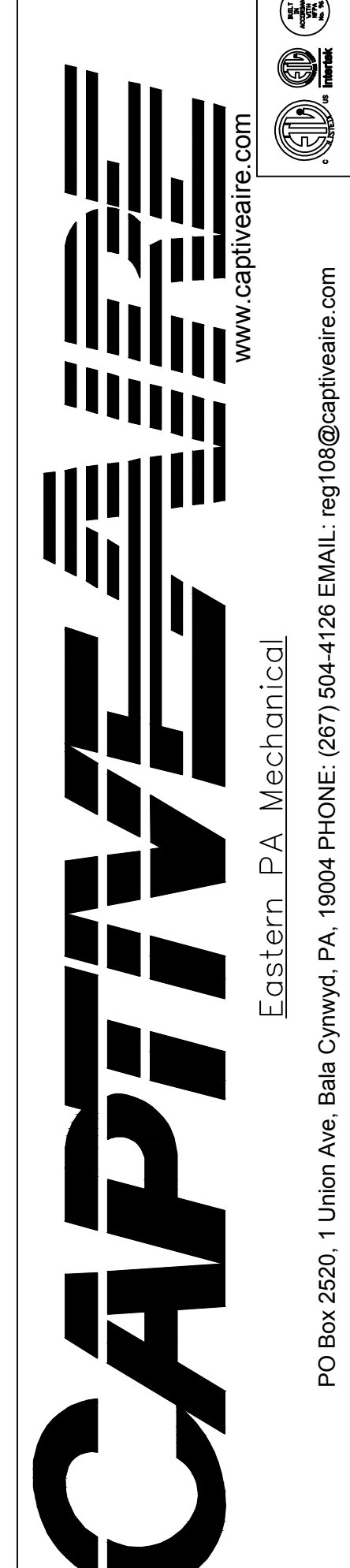


BALANCING DAMPER DETAIL



REVISIONS

DESCRIPTION	DATE



Snake Shack-1440-Boca Raton-R2
BOCA RATON, FL, 33427

DATE: 2/8/2022
DWG.#: 5316001
DRAWN BY: Joe Shilba
SCALE: 3/4" = 1'-0"
MASTER DRAWING
SHEET NO. 1

FL - 1440 - TOWN CENTER AT BOCA RATON

6000 GLADES RD.
SPACE 1164C & SPACE 178ST
BOCA RATON, FL 33431

Gensler

LIC. NO. AA0002837 TEL 415.433.3700
45 FREMONT ST FAX 415.836.4599
SUITE 1500
SAN FRANCISCO, CA 94105
UNITED STATES

SATELLITE OFFICE: TEL 813.204.9000
400 N ASHLEY DRIVE
SUITE 0400 FAX 813.223.6948
TAMPA, FL 33602
UNITED STATES

ST ENGINEER
TENNESSEE 215
UPTOWN SQUARE
MURFREESBORO, TN 37129
TEL 615.278.9596

MEPF ENGINEER
3035 S 72ND ST
OMAHA NE 68124
TEL 402.391.7680
www.edrcontractor.com

FOODSERVICE CONSULTANT
505 COLLINS ST
PO BOX 3505
SOUTH ATTLEBORO
MA 02703
TEL 508.399.6000
FAX 508.761.3620

Date	Description
1 05/02/2022	ISSUE FOR CONSTRUCTION

Seal / Signature

Date: 04/28/22 COA#: 28403

TOWN CENTER AT BOCA RATON

Project Number
69.6579.000

Description
CAPTIVEAIRE DRAWINGS

Scale
1/4" = 1'-0"

M701

Gensler

LIC. NO. A40002837 TEL 415.433.3700
45 FREMONT ST FAX 415.836.4599
SUITE 1500
SAN FRANCISCO, CA 94105
UNITED STATES

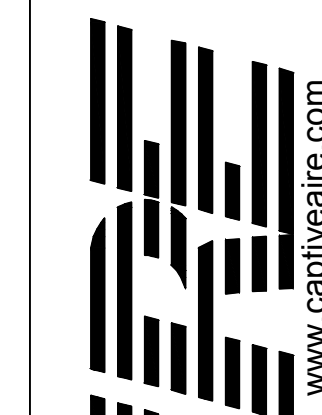
SATELLITE OFFICE: TEL 813.204.9000
400 N ASHLEY DRIVE
SUITE 0400 FAX 813.223.6948
TAMPA, FL 33602
UNITED STATES

ST ENGINEER
TENNESSEE 215
UPTOWN SQUARE
MURFREESBORO, TN 37129
TEL 615.278.9586

MEPF ENGINEER
3035 S 72ND ST
OMAHA NE 68124
TEL 402.391.7680
www.schnackel.com

FOODSERVICE CONSULTANT
505 COLLINS ST
PO BOX 3505
SOUTH ATTLEBORO
MA 02703
TEL 508.399.6000
FAX 508.761.3620

REVISIONS	
DESCRIPTION	DATE



CAPTIVE
MECHANICAL

Eastern, P.A. Mechanical
PO Box 2520, 1 Union Ave. Bala Cynwyd, PA, 19004 PHONE: (267) 504-4126 EMAIL: reg@captiveme.com

Snake Shack-1440-Boca Raton-R2
BOCA RATON, FL, 33427

DATE: 2/8/2022

DWG.#:
5316001

DRAWN BY: Joe.shilba

SCALE:
3/4" = 1'-0"

MASTER DRAWING

SHEET NO.
2

Date	Description
1 05/02/2022	ISSUE FOR CONSTRUCTION

Seal / Signature

Date: 04/28/22 COA#: 28403

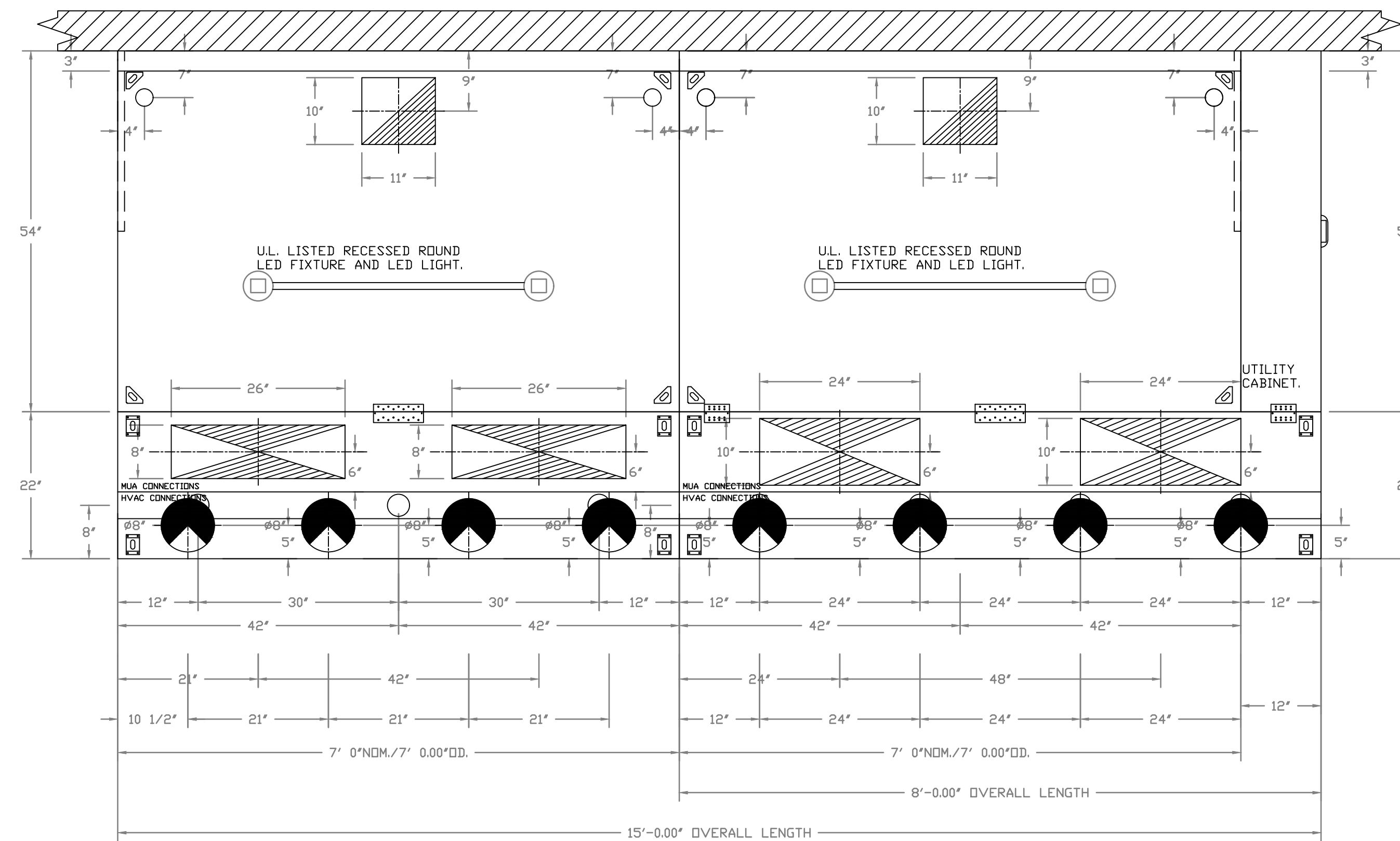
Project Name
TOWN CENTER AT BOCA RATON

Project Number
69.6579.000

Description
CAPTIVEAIRE DRAWINGS

Scale
1/4" = 1'-0"

M702

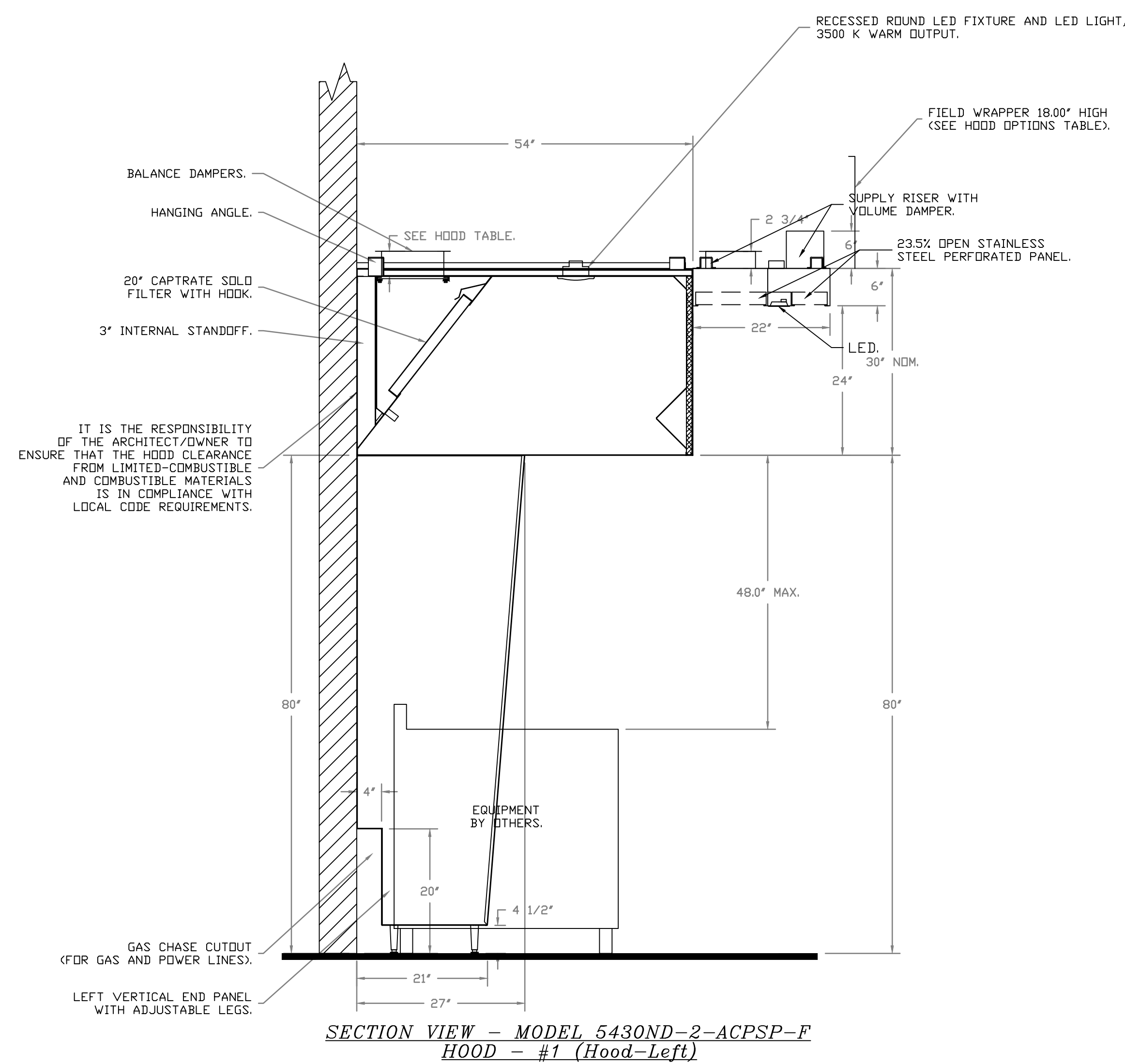


PLAN VIEW - HOOD #1 (Hood-Left)
7'-0.00" LONG 54.30ND-2-ACPSP-F

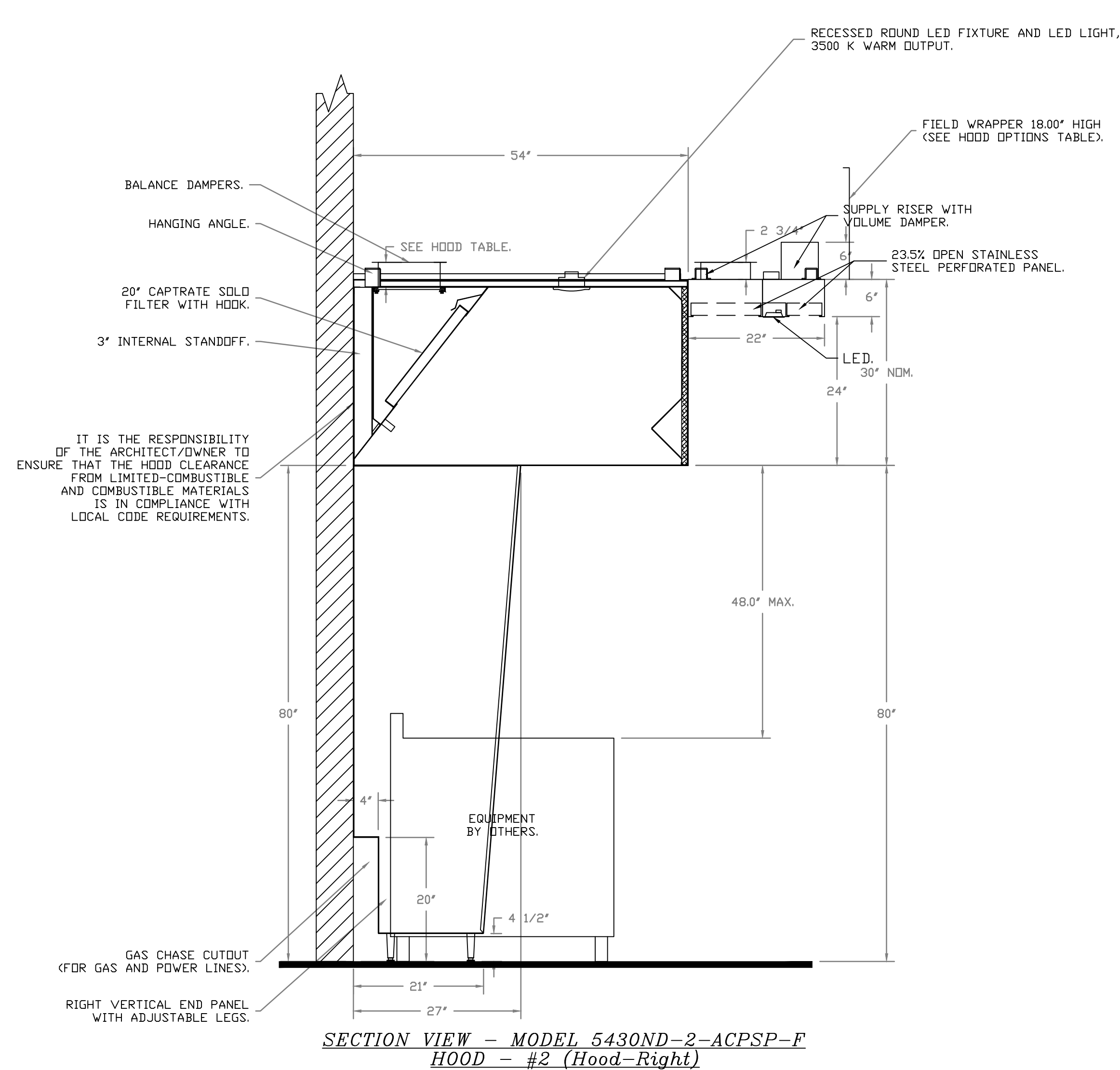
PLAN VIEW - HOOD #2 (Hood-Right)
7'-0.00" LONG 54.30ND-2-ACPSP-F

ACPSP SHIPS LOOSE FOR FIELD INSTALLATION

ACPSP SHIPS LOOSE FOR FIELD INSTALLATION



SECTION VIEW - MODEL 5430ND-2-ACPSP-F
HOOD - #1 (Hood-Left)



SECTION VIEW - MODEL 5430ND-2-ACPSP-F
HOOD - #2 (Hood-Right)

FIRE SYSTEM INFORMATION - JOB#5316001

FIRE SYSTEM NO	TAG	TYPE	SIZE	FLOW POINTS	INSTALLATION	
					SYSTEM	LOCATION ON HOOD
1		ANSUL R102	3.0/3.0/3.0	32	FIRE CABINET RIGHT	RIGHT, HOOD 2

GAS VALVE(S)

FIRE SYSTEM NO	TAG	TYPE	SIZE	SUPPLIED BY
1		MECHANICAL	2.000	CAPTIVEAIRE SYSTEMS

NOTES

- FIELD PIPE DROPS AS SHOWN
- SLEEVING, ELBOWS, TEES, AND NOZZLES SUPPLIED BY GAS.
- RELOCATE NOZZLES IF FLOW PATTERN IS BLOCKED BY SHELVING, SALAMANDERS, ETC.
- MAXIMUM 9 ELBOWS IN SUPPLY LINE.
- MINIMUM 72 INCHES OF AGENT LINE FROM TANK TO FIRST NOZZLE COVERING A RANGE, FRYER, OR WOK TO REFLECT GENERAL PIPING REQUIREMENTS.
- IF APPLICABLE, PRE-PIPED CHARBROILER DROPS ARE SHIPPED LOOSE.
- FACTORY PIPING EXTENDS A MAXIMUM OF 6" ABOVE THE TOP OF THE HOOD.
- APPLIANCE DIMENSIONS LISTED REPRESENT THE COOKING SURFACE SIZE, NOT THE OVERALL APPLIANCE SIZE.
- THIS FIRE SYSTEM COMPLIES WITH U.L. 300 REQUIREMENTS.

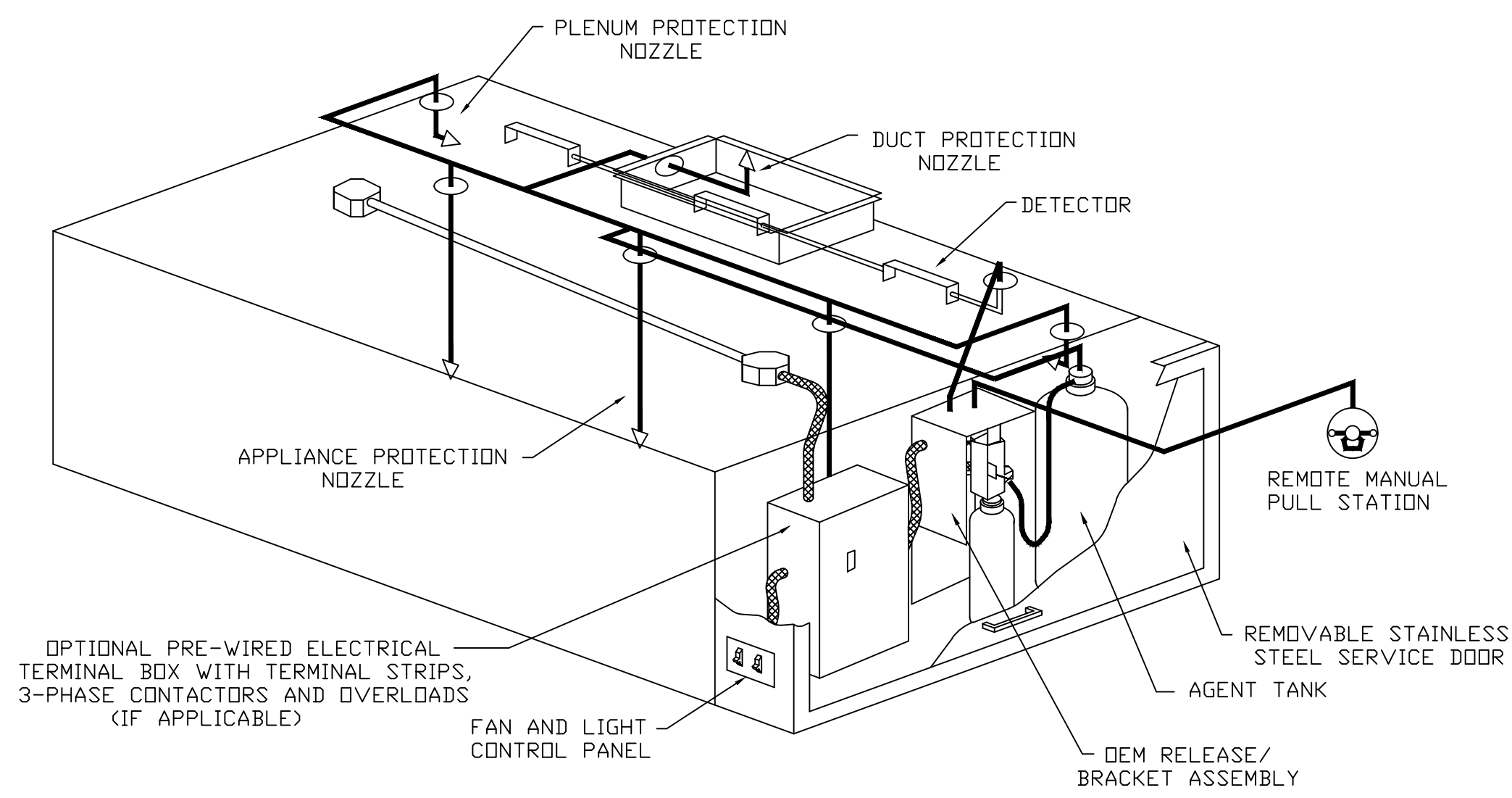
JOB #: 5316001.

JOB NAME: SHAKE SHACK-1440-BOCA RATON-R2.

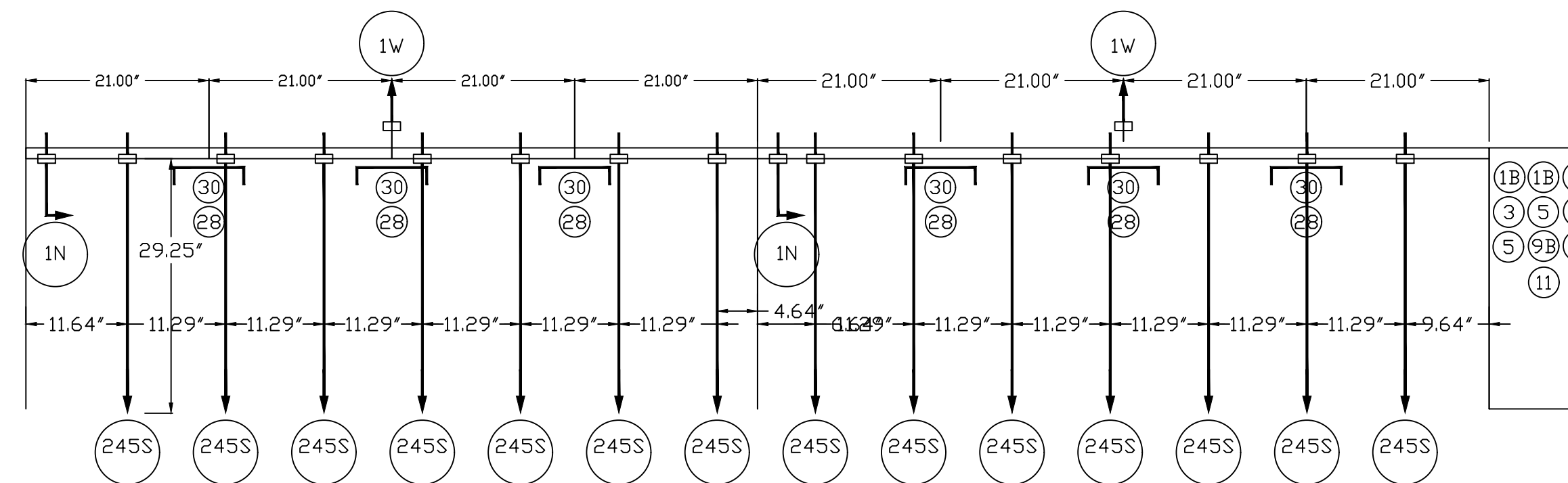
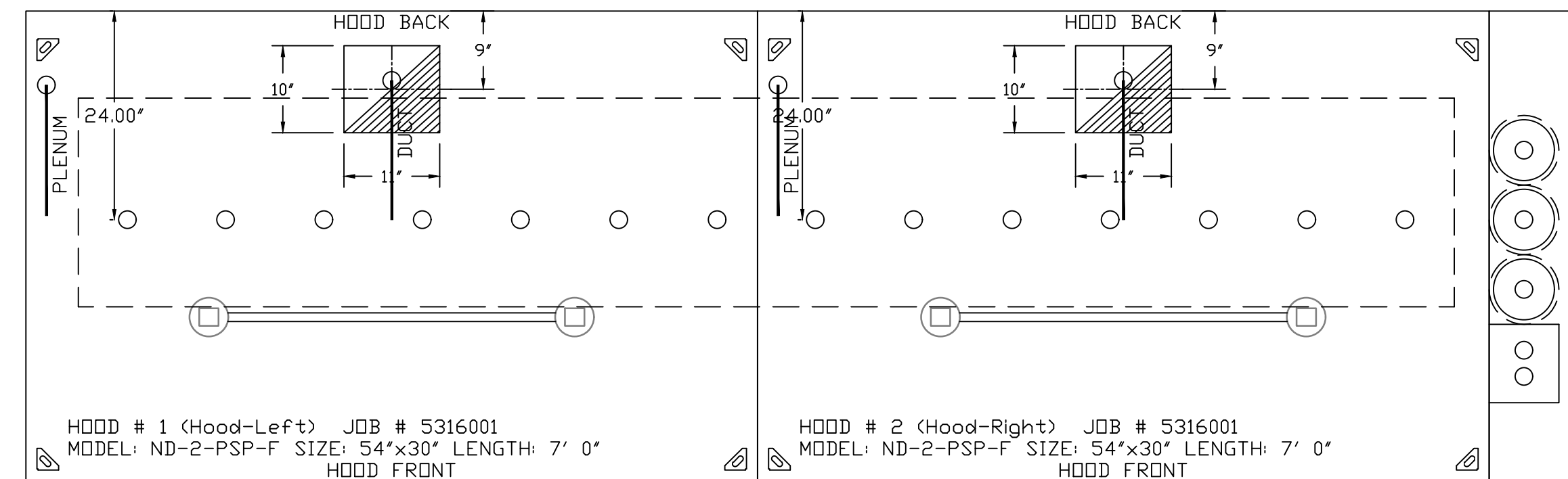
SYSTEM SIZE: ANSUL-3.0/3.0/3.0 TOTAL FP REQUIRED: 32.
 HOOD # 1 7' 0.00" LONG x 54" WIDE x 30" HIGH.
 RISER # 1 SIZE: 10" x 11".
 HOOD # 1 METAL BLOW-OFF CAPS INCLUDED.
 HOOD # 2 7' 0.00" LONG x 54" WIDE x 30" HIGH.
 RISER # 1 SIZE: 10" x 11".
 HOOD # 2 METAL BLOW-OFF CAPS INCLUDED.

LEGEND - FIRE CABINET ANSUL SYSTEM

- 1A 1.5 GALLON TANK.
- 1B 3 GALLON TANK.
- 2 DEM AUTOMAN RELEASE.
- 3 DEM REGULATED RELEASE.
- 4 DEM REGULATED ACTUATOR.
- 5 ANSULEX LIQUID AGENT (3 GAL.).
- 6 ANSULEX LIQUID AGENT (1.5 GAL.).
- 7 CARTRIDGE (101-20).
- 8 CARTRIDGE (101-10).
- 9 CARTRIDGE (101-30).
- 9A CARTRIDGE (LT-A-101-30).
- 9B DOUBLE TANK CARTRIDGE.
- 10 TEST LINK.
- 11 DOUBLE MICROSWITCH.
- 12 HOSE ASSEMBLY.
- 1100 DUCT NOZZLE (430913).
- 2W DUCT NOZZLE (419337).
- 1W NOZZLE ASSEMBLY (419336).
- 1F NOZZLE ASSEMBLY (419333).
- 1N NOZZLE ASSEMBLY (419335).
- 1/2N NOZZLE ASSEMBLY (419334).
- 3N NOZZLE ASSEMBLY (419338).
- 245 NOZZLE ASSEMBLY (419340).
- 230 NOZZLE ASSEMBLY (419339).
- 2120 NOZZLE ASSEMBLY (419343).
- 290 NOZZLE ASSEMBLY (419342).
- 260 NOZZLE ASSEMBLY (419341).
- 28 DETECTOR BRACKET.
- 29 LOW TEMP FUSIBLE LINK.
- 30 HIGH TEMP FUSIBLE LINK.
- MGV MECHANICAL GAS VALVE.
- EGV ELECTRICAL GAS VALVE.
- 34 REMOTE MANUAL PULL STATION.
- S SWIVEL ADAPTOR.

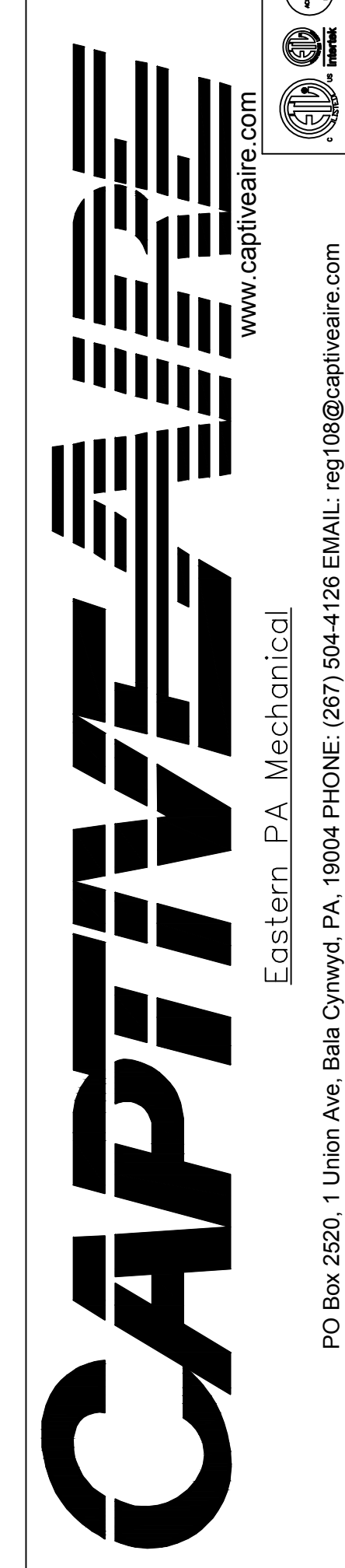


TYPICAL ANSUL R-102 SYSTEM LAYOUT



ANSUL OVERLAPPING COVERAGE - 12 HIGH PROXIMITY 138.00" L X 24.00" D

REVISIONS	
DESCRIPTION	DATE



Shake Shack-1440-Boca Raton-R2
 BOCA RATON, FL, 33427

DATE: 2/8/2022
 DWG.#: 5316001
 DRAWN BY: Joe.shilba
 SCALE: 3/4" = 1'-0"
 MASTER DRAWING

SHEET NO. 3

FL - 1440 - TOWN CENTER AT BOCA RATON
 6000 GLADES RD.
 SPACE 1164C & SPACE 178ST
 BOCA RATON, FL 33431

Gensler

LIC. NO. A40002837 TEL 415.433.3700
 45 FREMONT ST FAX 415.836.4599
 SUITE 1500
 SAN FRANCISCO, CA 94105
 UNITED STATES
 SATELLITE OFFICE: TEL 813.204.9000
 400 N ASHLEY DRIVE FAX 813.223.6948
 SUITE 0400
 TAMPA, FL 33602
 UNITED STATES

ST ENGINEER
 TENNESSEE 215
 UPTOWN SQUARE
 NURFREESBORO, TN 37129
 TEL 615.278.9586



FOODSERVICE CONSULTANT
 505 COLLINS ST
 PO BOX 3505
 SOUTH ATTLEBORO
 MA 02703
 TEL 508.399.6000
 FAX 508.761.3620

Date	Description
1 05/02/2022	ISSUE FOR CONSTRUCTION

Seal / Signature

Date: 04/28/22 COA#: 28403

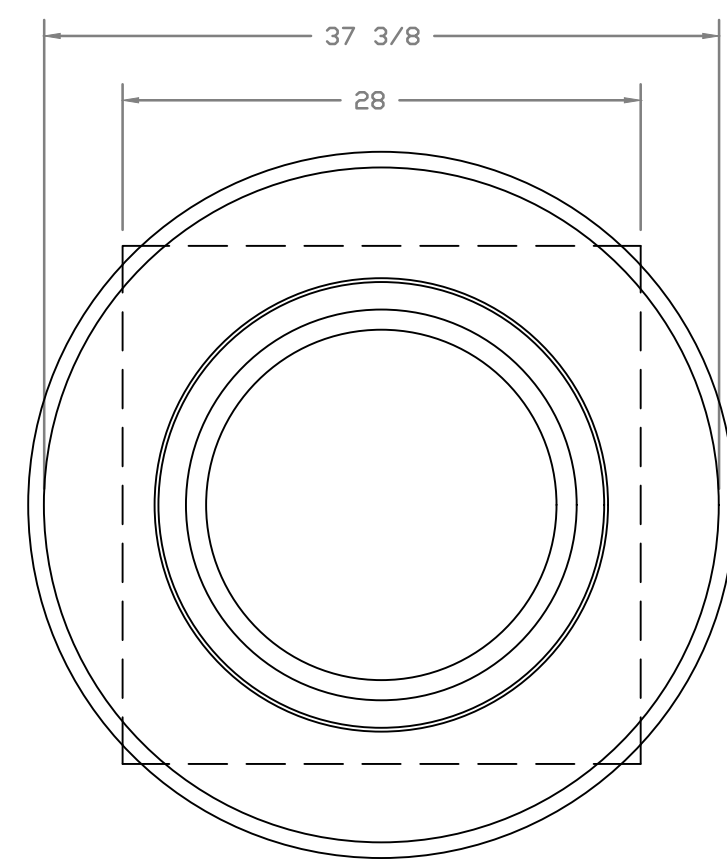
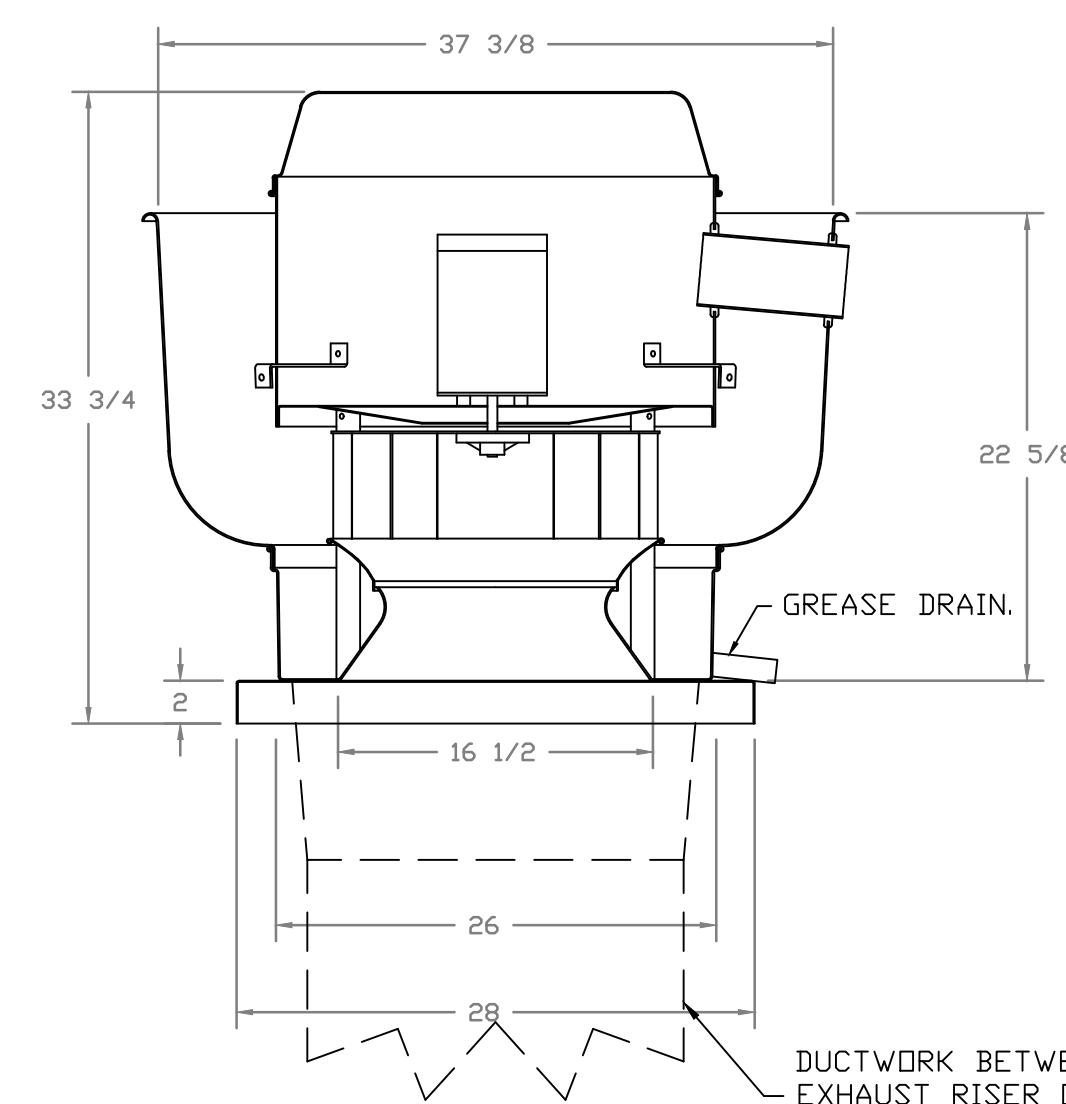
Project Name
TOWN CENTER AT BOCA RATON
 Project Number
69.6579.000

Description
 CAPTIVEAIRE DRAWINGS

Scale
 1/4" = 1'-0"

M703

FAN #1 DU80HFA - EXHAUST FAN (KEF-1)



TOP VIEW

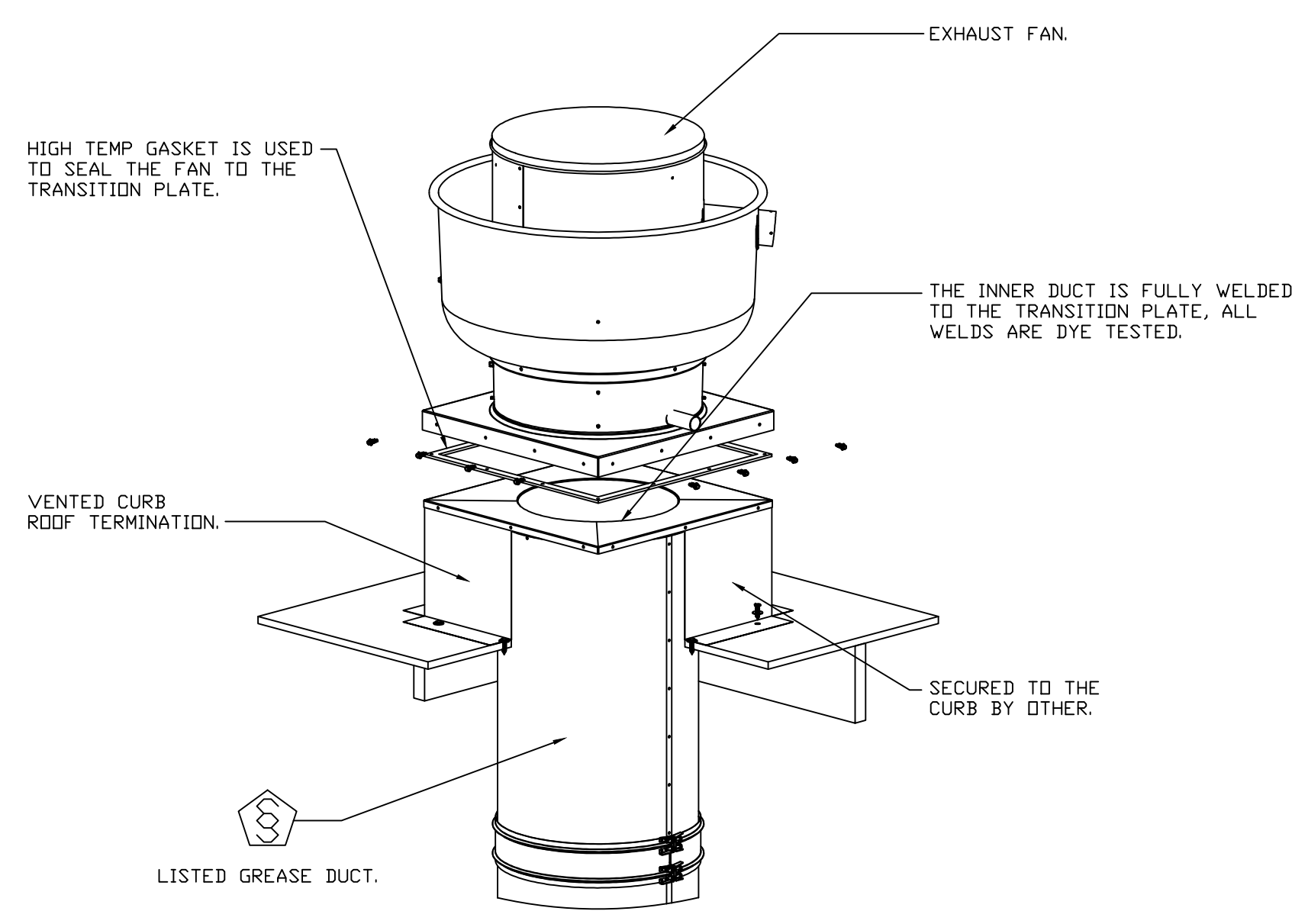
- FEATURES:**
- DIRECT DRIVE CONSTRUCTION (NO BELTS/PULLEYS).
 - ROOF MOUNTED FANS.
 - RESTAURANT MODEL.
 - UL705 AND UL762 AND ULC-S645
 - VARIABLE SPEED CONTROL.
 - INTERNAL WIRING.
 - THERMAL OVERLOAD PROTECTION (SINGLE PHASE).
 - HIGH HEAT OPERATION 300°F (149°C).
 - GREASE CLASSIFICATION TESTING.
 - NEMA 3R SAFETY DISCONNECT SWITCH.

NORMAL TEMPERATURE TEST
EXHAUST FAN MUST OPERATE CONTINUOUSLY WHILE EXHAUSTING AIR AT 300°F (149°C) UNTIL ALL FAN PARTS HAVE REACHED THERMAL EQUILIBRIUM AND WITHOUT ANY DETERIORATING EFFECTS TO THE FAN WHICH WOULD CAUSE UNSAFE OPERATION.

ABNORMAL FLARE-UP TEST
EXHAUST FAN MUST OPERATE CONTINUOUSLY WHILE EXHAUSTING BURNING GREASE VAPORS AT 600°F (316°C) FOR A PERIOD OF 15 MINUTES WITHOUT THE FAN BECOMING DAMAGED TO ANY EXTENT THAT COULD CAUSE AN UNSAFE CONDITION.

OPTIONS
GREASE BOX.
FAN BASE CERAMIC SEAL - INSTALLED AT PLANT - FOR GREASE DUCTS.
LOAD REACTOR MOUNTED IN FAN.
2 YEAR PARTS WARRANTY.

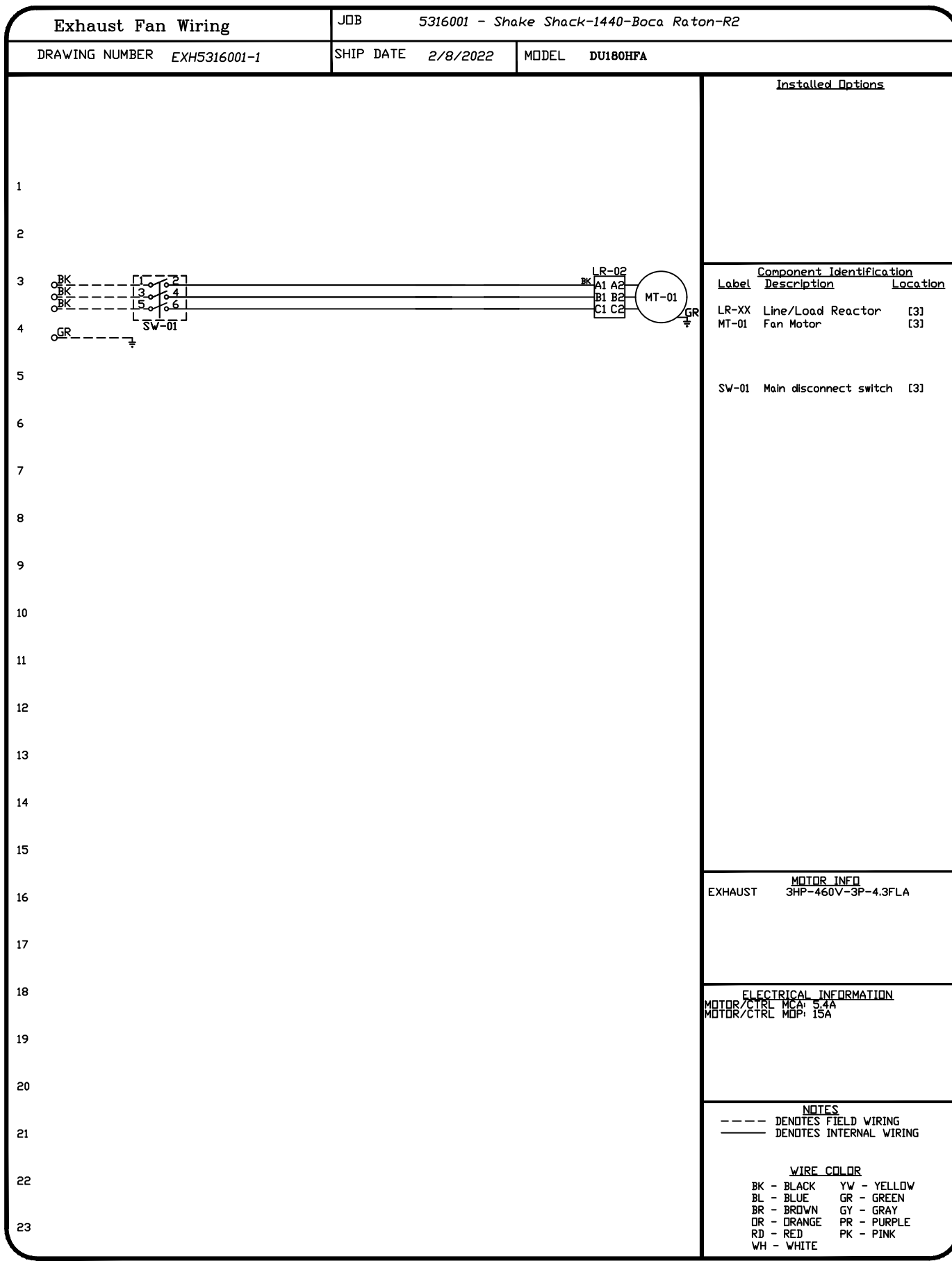
DUCTWORK BETWEEN EXHAUST RISER IN HOOD AND FAN (BY OTHERS).



THE INNER DUCT IS FULLY WELDED TO THE TRANSITION PLATE, ALL WELDS ARE DYE TESTED.

SECURED TO THE CURB BY OTHER.

LISTED GREASE DUCT.



REVISIONS	
DESCRIPTION	DATE

CAPTIVE

EosLern, PA Mechanical
PO Box 2520, 1 Union Ave, Bala Cynwyd, PA, 19004 PHONE: (267) 564-4128 EMAIL: reg1.08@captiveaire.com

Snake Shack-1440-Boca Raton-R2
BOCA RATON, FL, 33427

DATE: 2/8/2022
DWG.#: 5316001
DRAWN BY: Joe Shilba
SCALE: 3/4" = 1'-0"
MASTER DRAWING

SHEET NO. 5

FL - 1440 - TOWN CENTER AT BOCA RATON
6000 GLADES RD.
SPACE 1164C & SPACE 178ST
BOCA RATON, FL 33431

Gensler

LIC. NO. AA0002837 TEL 415.433.3700
45 FREMONT ST. FAX 415.836.4599
SUITE 1500
SAN FRANCISCO, CA 94105
UNITED STATES

SATELLITE OFFICE: TEL 813.204.9000
400 N ASHLEY DRIVE FAX 813.223.6948
SUITE 0400
TAMPA, FL 33602
UNITED STATES

ST ENGINEER
TENNESSEE 215
UPTOWN SQUARE
MURFREESBORO, TN 37129
TEL 615.278.9586

Schnackel engineers

MEPF ENGINEER
3035 S 72ND ST
OMAHA NE 68124
TEL 402.391.7680

New York • Miami • Omaha • Los Angeles • Seattle • Honolulu
903.991.0563 www.schnackel.com

FOODSERVICE CONSULTANT
505 COLLINS ST
PO BOX 3505
SOUTH ATTLEBORO
MA 02703
TEL 508.399.6000
FAX 508.761.3620

Date	Description
1 05/02/2022	ISSUE FOR CONSTRUCTION

Seal / Signature

Date: 04/28/22 COA#: 28403

Project Name
TOWN CENTER AT BOCA RATON

Project Number
69.6579.000

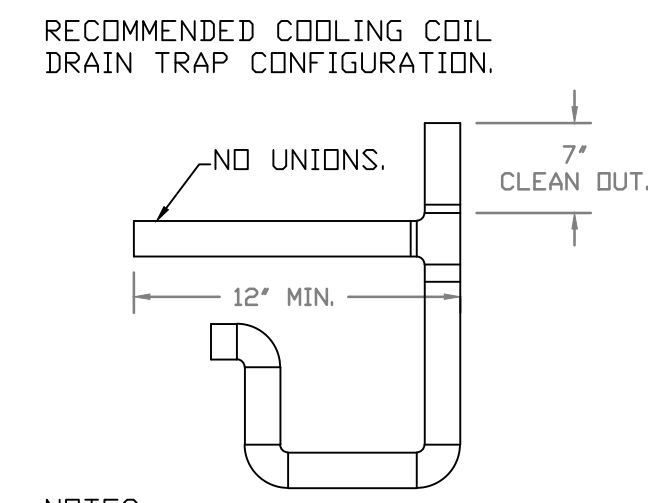
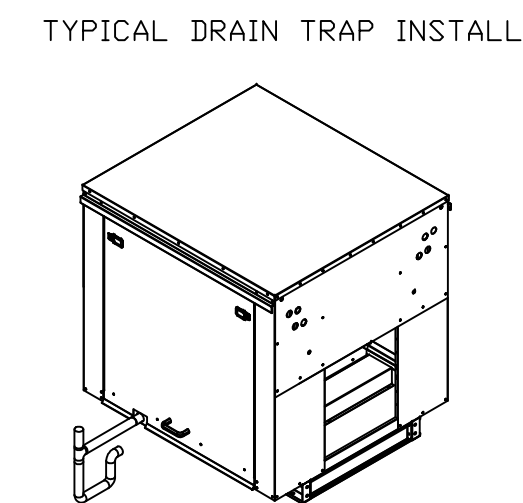
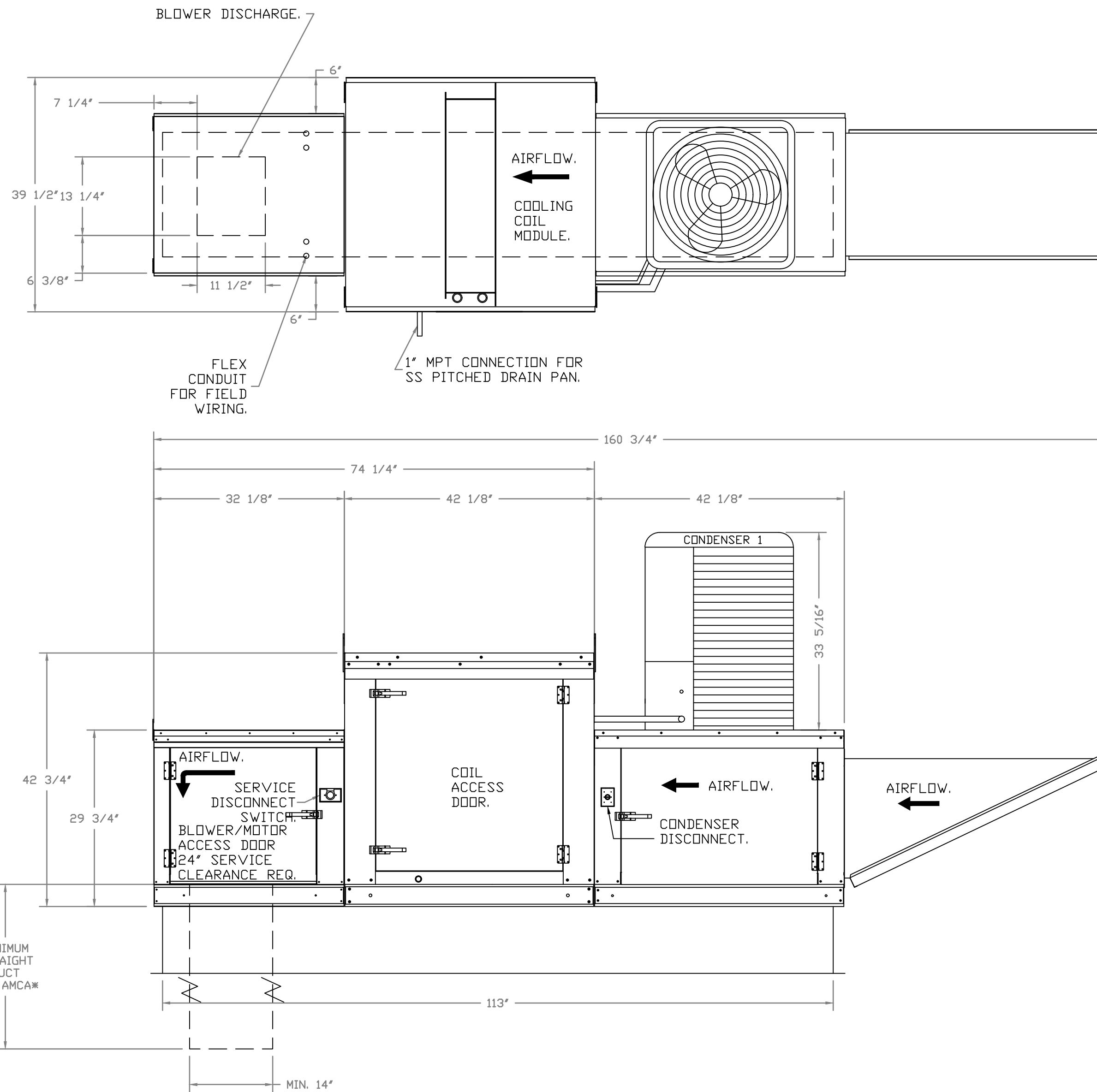
Description
CAPTIVEAIRE DRAWINGS

Scale
1/4" = 1'-0"

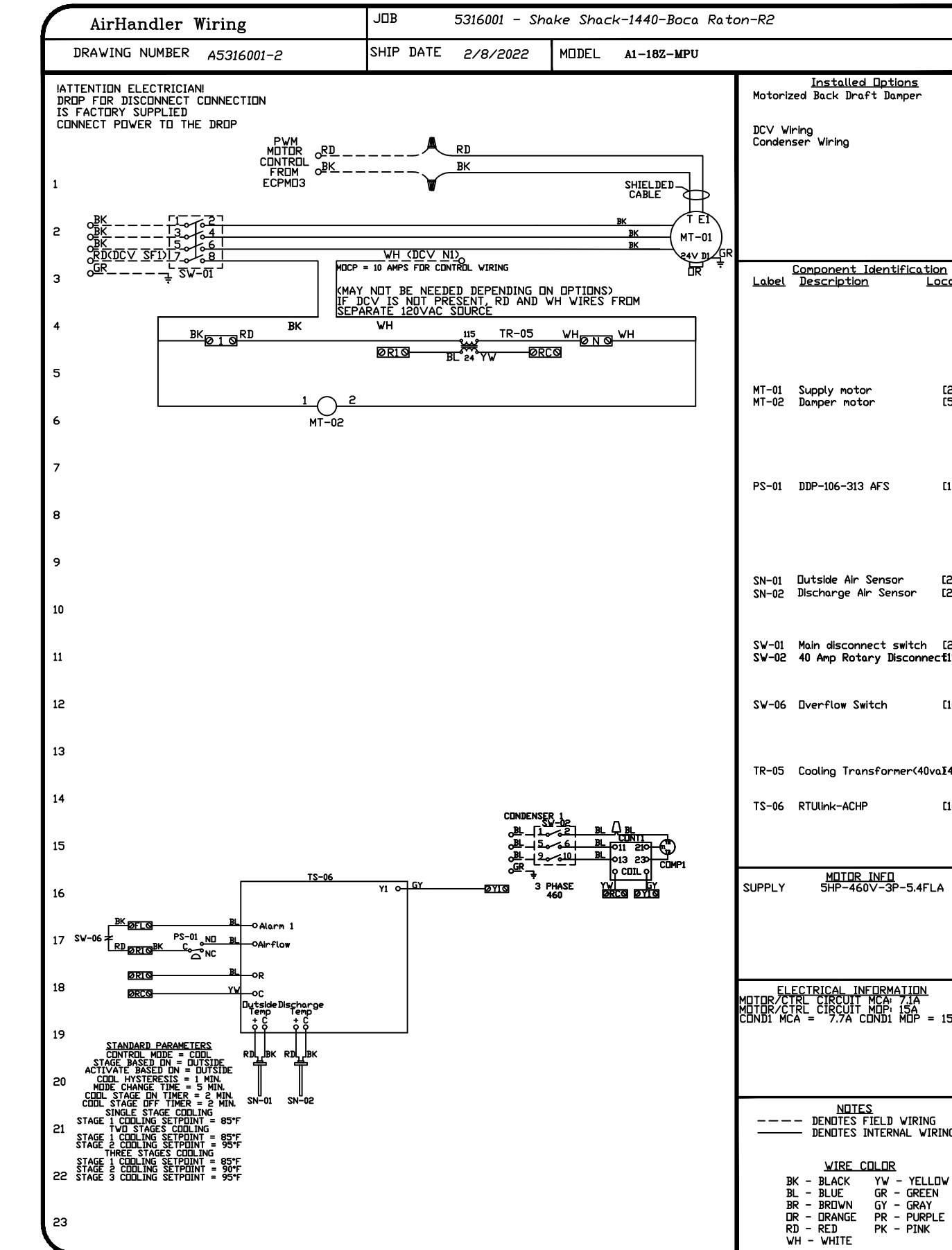
M705

- FAN #2 A1-182-MPU - SUPPLY FAN (KMAA-1)
- SUPPLY UNIT WITH 18" DIRECT DRIVE FAN IN SIZE #1 HOUSING.
- INTAKE HOOD WITH E2 FILTERS
- DOWN DISCHARGE - AIR FLOW RIGHT -> LEFT.
- MODIFIED BACK DRAFT DAMPER 16" X 18" FOR SIZE 1 UNTEMPERED UNITS W/EXTENDED SHAFT, STANDARD GALVANIZED CONSTRUCTION, 3/4" REAR FLANGE, LDV LEAKAGE, TFB200 ACTUATOR INCLUDED.
- 3 TON, SINGLE CIRCUIT MODULAR PACKAGED COOLING OPTION FOR SIZE 1 MODULAR PACKAGED UNIT. INCLUDES CONDENSER, DX COIL, FILTER/DRYER KIT, THERMAL EXPANSION VALVE, R410A REFRIGERANT, AND REFRIGERANT PIPING (1100 TO 1800 CFM) WHEN ORDERED WITH OPPOSITE AIRFLOW. CONDENSERS ACCESS AND COIL PIPING WILL REMAIN IN STANDARD POSITION. DRAIN AND SLEDS WILL MOVE TO THE OPPOSITE SIDE. ANY OTHER CHANGE WILL REQUIRE CLT. CONDENSERS REQUIRE SEPARATE 460V, 3 PHASE POWER SUPPLY UNLESS ORDERED WITH SINGLE POINT CONNECTION COIL + RETURN.
- CONTROL PACKAGE FOR MDD PACKAGE UNIT COOLING ONLY UNIT. INCLUDES AIRFLOW PROVING SWITCH, RTULINK-ACHP BOARD AND TERMINAL BLOCKS.
- SIZE 1 MOISTURE ELIMINATOR OPTION FOR DX COILS, MPUS AND CHILLED WATER COILS - ALLOWS COOLING COIL FACE VELOCITY TO INCREASE TO 650 FPM. INCREASES COOLING COIL MAX CFM TO 3650 CFM.
- SUPPORT SHELL FOR SIZE 1 MODULAR PACKAGE UNIT. INCLUDES CONTROL VESTIBULE. INCLUDES CONDENSER SUPPORTS. DOES NOT INCLUDE RETURN AIR OR INLET AIR DAMPER.
- ECH WIRING PACKAGE FOR ZIEHL SUPPLY MOTORS WITH PWM SIGNAL FROM COPRO3 PREWIRE.
- HINGED DOUBLE WALL INSULATED DDDR ASSEMBLY (BURNER/BLOWER/MPU SECTION).
- 2 YEAR PARTS WARRANTY

NOTE: SUPPLY DUCT MUST BE INSTALLED TO MEET SMACNA STANDARDS. A MINIMUM STRAIGHT DUCT LENGTH MUST BE MAINTAINED DOWNSTREAM OF UNIT DISCHARGE AS OUTLINED IN AMCA PUBLICATION 201. WHEN USING RECTANGULAR DUCTWORK, ELBOWS MUST BE RADIUS THROAT, RADIUS BACK WITH TURNING VANES. FLEXIBLE DUCTWORK AND SQUARE THROAT/SQUARE BACK ELBOWS SHOULD NOT BE USED. ANY TRANSITION AND/OR TURNS IN THE DUCTWORK WILL CAUSE SYSTEM EFFECT. SYSTEM EFFECT WILL DRASTICALLY INCREASE STATIC PRESSURE AND REDUCE AIRFLOW. DO NOT RELY ON UNIT TO SUPPORT DUCT IN ANY WAY. FAILURE TO PROPERLY SIZE DUCTWORK MAY CAUSE SYSTEM EFFECTS AND REDUCE PERFORMANCE OF THE EQUIPMENT. SUGGESTED STRAIGHT DUCT SIZE IS 14" X 14".



- NOTES:
- 1" DIAMETER PVC PIPE ONLY
 - USE ONLY LOW PROFILE COUPLINGS.
 - ADD CLEAN OUT AS SHOWN.



REVISIONS	
DESCRIPTION	DATE

CAPTIVE
 Eastern, PA, Mechanical
 www.captiveare.com
 PO Box 2520, 1 Union Ave, Bala Cynwyd, PA, 19004 PHONE: (267) 504-4126 EMAIL: reg108@captiveare.com

Snake Shack-1440-Boca Raton-R2
 BOCA RATON, FL, 33427

DATE: 2/8/2022
 DWG.#: 5316001
 DRAWN BY: Joe Shiba
 SCALE: 3/4" = 1'-0"
 MASTER DRAWING
 SHEET NO. 6

FL - 1440 - TOWN CENTER AT BOCA RATON
 6000 GLADES RD.
 SPACE 1164C & SPACE 1785T
 BOCA RATON, FL 33431

Gensler
 LIC. NO. AA0002837 TEL 415.433.3700
 45 FREMONT ST FAX 415.836.4599
 SUITE 1500
 SAN FRANCISCO, CA 94105
 UNITED STATES

SATELLITE OFFICE: TEL 813.204.9000
 400 N ASHLEY DRIVE FAX 813.223.6948
 SUITE 0400
 TAMPA, FL 33602
 UNITED STATES

ST ENGINEER
 TENNESSEE 215
 UPTOWN SQUARE
 MURFREESBORO, TN 37129
 TEL 615.278.9586

MEPF ENGINEER
 3035 S 72ND ST
 OMAHA NE 68124
 TEL 402.391.7680
 New York • Miami • Omaha • Los Angeles • Seattle • Houston
 303.591.0503 www.schnackel.com

FOODSERVICE CONSULTANT
 505 COLLINS ST
 PO BOX 3505
 SOUTH ATTLEBORO
 MA 02703
 TEL 508.399.6000
 FAX 508.761.3620

Date	Description
1 05/02/2022	ISSUE FOR CONSTRUCTION

Seal / Signature

Date: 04/28/22 COA#: 28403

Project Name
 TOWN CENTER AT BOCA RATON
Project Number
 69.6579.000
Description
 CAPTIVEAIRE DRAWINGS

Scale
 1/4" = 1'-0"

M706

Gensler

LIC. NO. A40002837 TEL 415.433.3700
45 FREMONT ST FAX 415.836.4599
SUITE 1500
SAN FRANCISCO, CA 94105
UNITED STATES

SATELLITE OFFICE: TEL 813.204.9000
400 N ASHLEY DRIVE FAX 813.223.6948
SUITE 0400
TAMPA, FL 33602
UNITED STATES

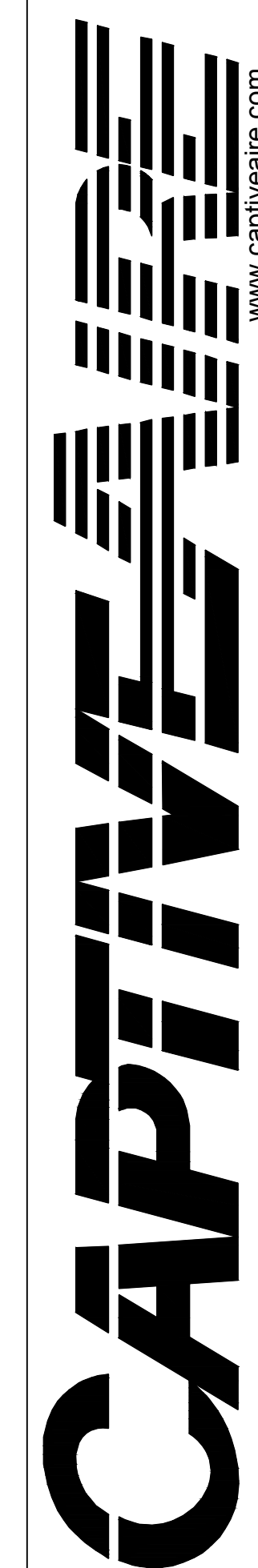
ST ENGINEER
TENNESSEE 215
UPTOWN SQUARE
MURFREESBORO, TN 37129
TEL 615.278.9586



MEPF ENGINEER
3035 S 72ND ST
OMAHA NE 68124
TEL 402.391.7680
www.schnackel.com

FOODSERVICE CONSULTANT
505 COLLINS ST
PO BOX 3505
SOUTH ATTLEBORO
MA 02703
TEL 508.399.6000
FAX 508.761.3620

REVISIONS	
DESCRIPTION	DATE



www.captiveaire.com
EGS term. P.A. Mechanical
PO Box 2520, 1 Union Ave. Balla Cynwyd, PA, 19004 PHONE: (267) 504-4126 EMAIL: reg108@captiveaire.com

Shack Shack-1440-Boca Raton-R2
BOCA RATON, FL, 33427

DATE: 2/8/2022
DWG.#: 5316001
DRAWN BY: Joe.shiiba
SCALE: 3/4" = 1'-0"
MASTER DRAWING

SHEET NO. 7

Date	Description
1 05/02/2022	ISSUE FOR CONSTRUCTION

Seal / Signature

Date: 04/28/22 COA#: 28403

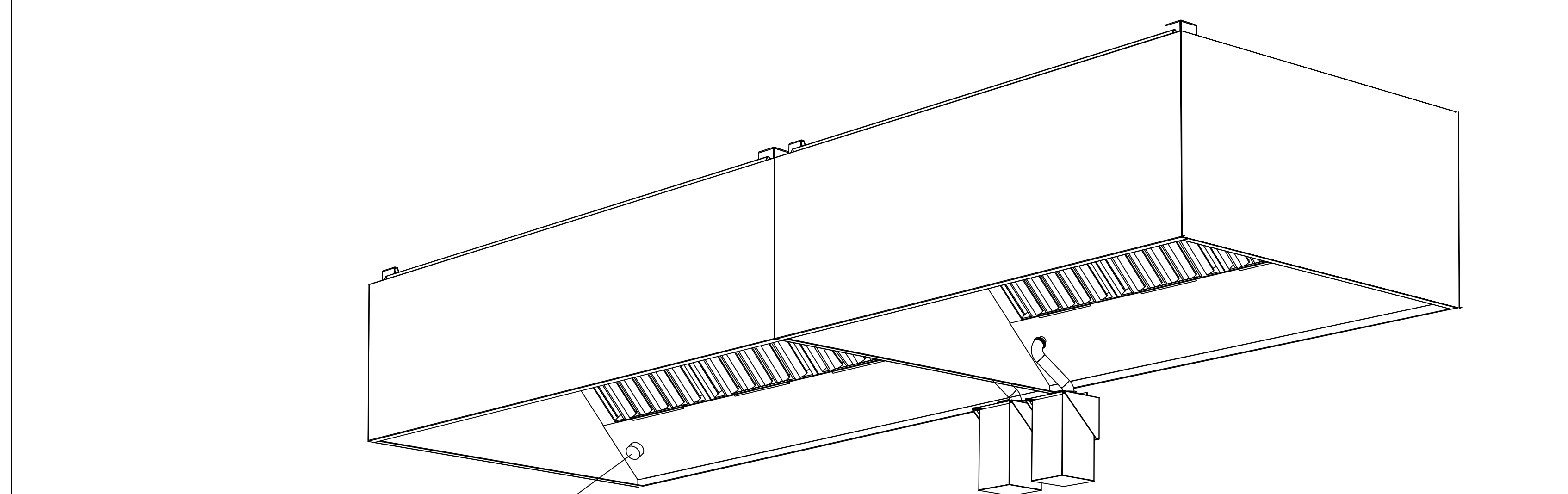
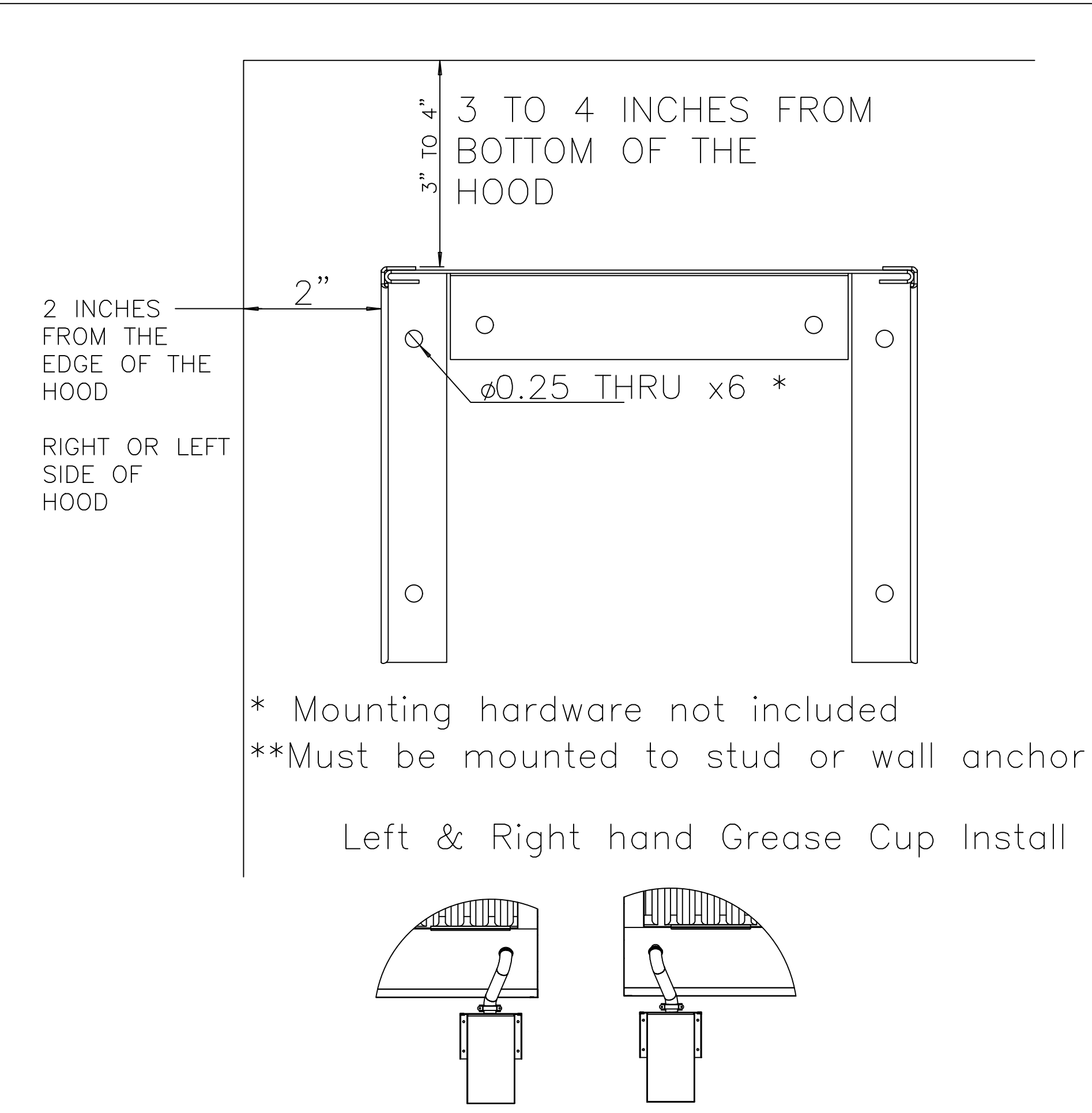
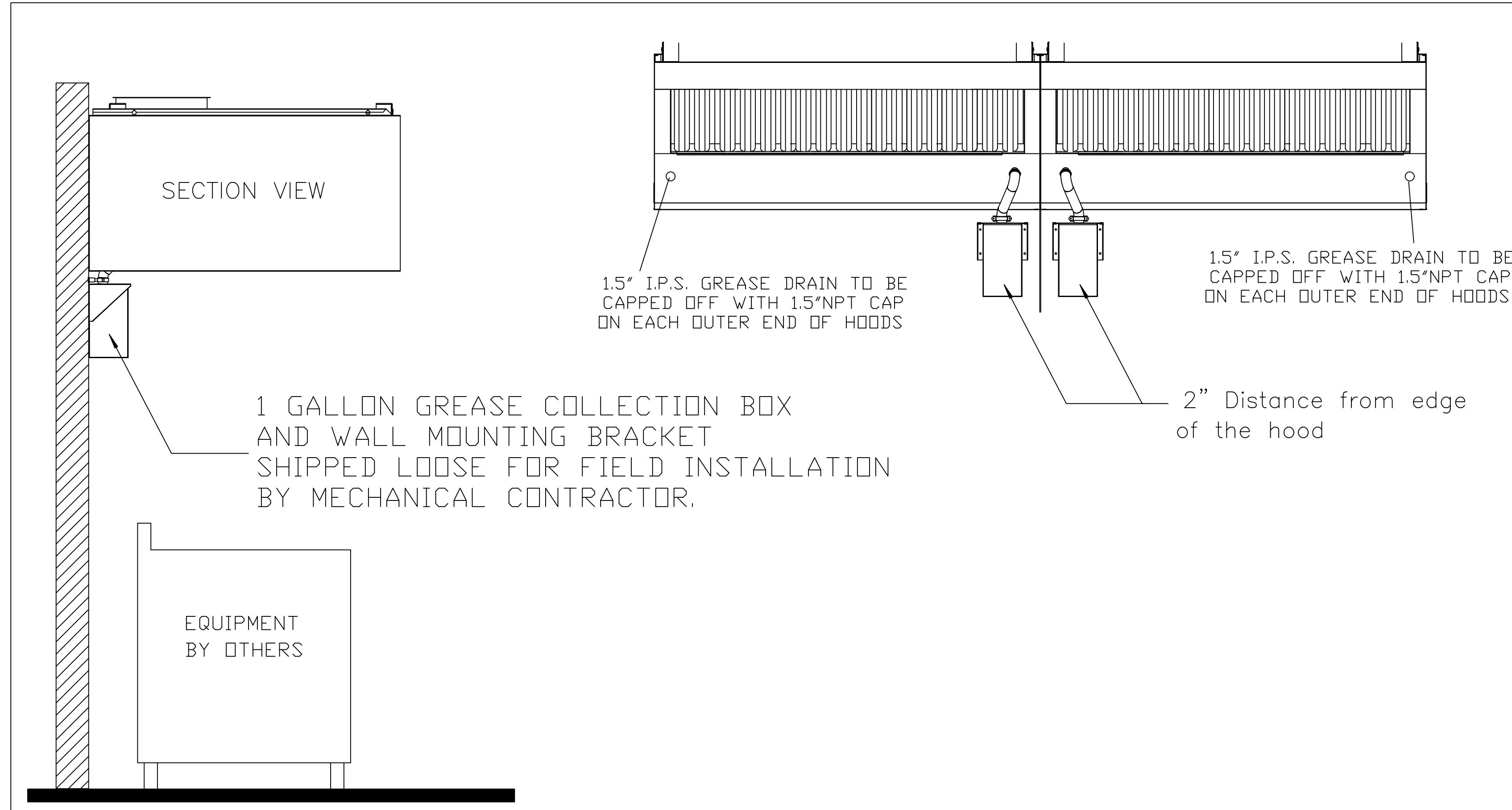
Project Name
TOWN CENTER AT BOCA RATON

Project Number
69.6579.000

Description
CAPTIVEAIRE DRAWINGS

Scale
1/4" = 1'-0"

M707

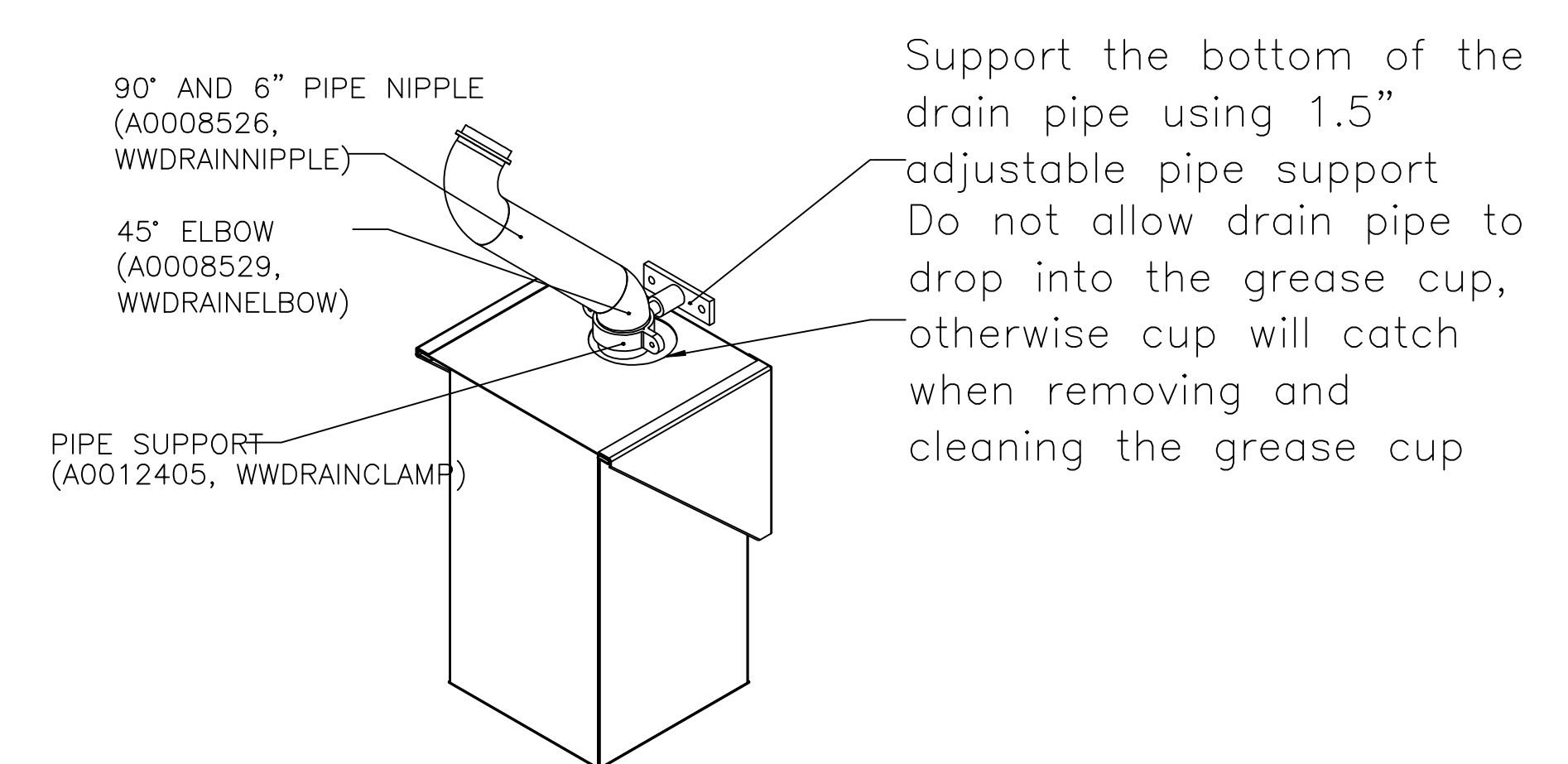


1.5" I.P.S. GREASE DRAIN TO BE CAPPED OFF WITH 1.5"NPT CAP ON EACH OUTER END OF HOODS

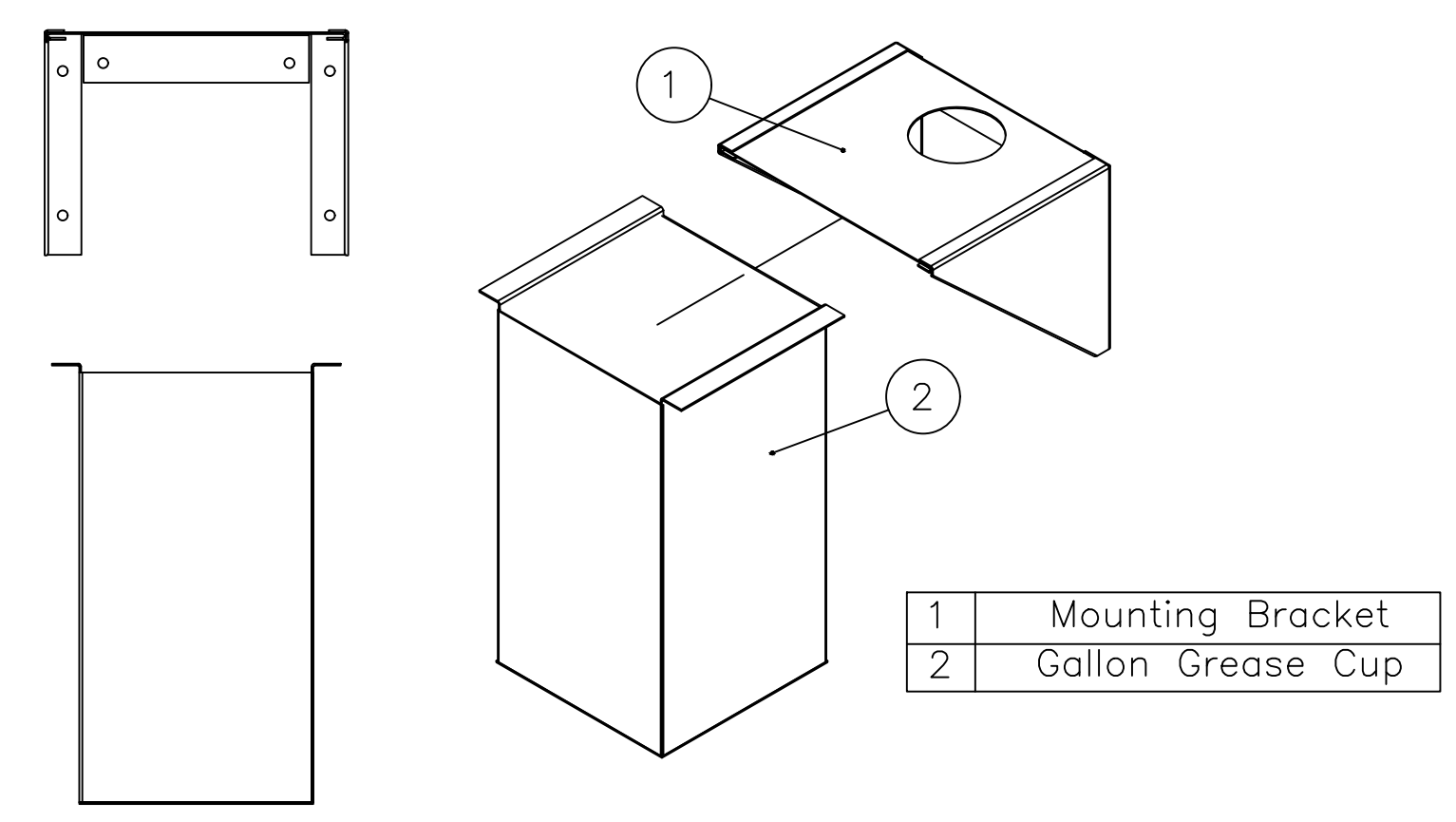
Instructions below outline single, or dual, one gallon grease cup installation for ND-2 hood models.

The one gallon grease cup comes as an assembly of stainless steel wall mounting bracket and one gallon cup. The mounting bracket should be installed 2" from the edge of the containment plenum and 3"-4" below the bottom of the hood.

Piping from the hood grease drain should route to the opening of the grease cup, but not into the cup, otherwise the cup will not be able to be removed and emptied.



Gallon Grease Cup Assembly



1 GALLON GREASE COLLECTION BOX AND WALL MOUNTING BRACKET SHIPPED LOOSE FOR FIELD INSTALLATION BY MECHANICAL CONTRACTOR.

