

GENERAL NOTES

A. FIRE BARRIERS - OBC 717.5.2 EXCEPTION 3 / FIRE PARTITIONS - OBC 717.5.4 EXCEPTION 4

FIRE DAMPERS ARE NOT REQUIRED (UNLESS SHOWN ON FLOOR PLANS OR SCHEMATICS) AT PENETRATIONS OF FIRE BARRIERS WHERE SUCH WALLS ARE PENETRATED BY DUCTED HVAC SYSTEMS, HAVING A REQUIRED FIRE-RESISTANCE RATING OF 1 HOUR OR LESS IN AREAS OF THESE THAN GROUP H AND ARE IN BUILDINGS EQUIPPED THROUGH WITH AN AUTOMATIC SPRINKLER SYSTEM IN ACCORDANCE WITH SECTION 903.3.1.1 OR 903.1.2. HVAC SYSTEM SHALL BE CONSTRUCTED OF SHEET STEEL NOT LESS THAN 26 GAUGE. FLEXIBLE AIR CONNECTORS SHALL NOT BE PROHIBITED IN FULLY DUCTED SYSTEMS AT AIR HANDLING EQUIPMENT CONNECTIONS AND AT AIR CONNECTORS INSTALLATION TO CONNECT METAL DUCT TO A CEILING DIFFUSER AND IS LOCATED ENTIRELY WITHIN THE SAME ROOM AS THE CEILING DIFFUSER. THE FLEXIBLE AIR CONNECTOR SHALL NOT PAS THROUGH ANY WALLS, FLOORS, OR CEILINGS.

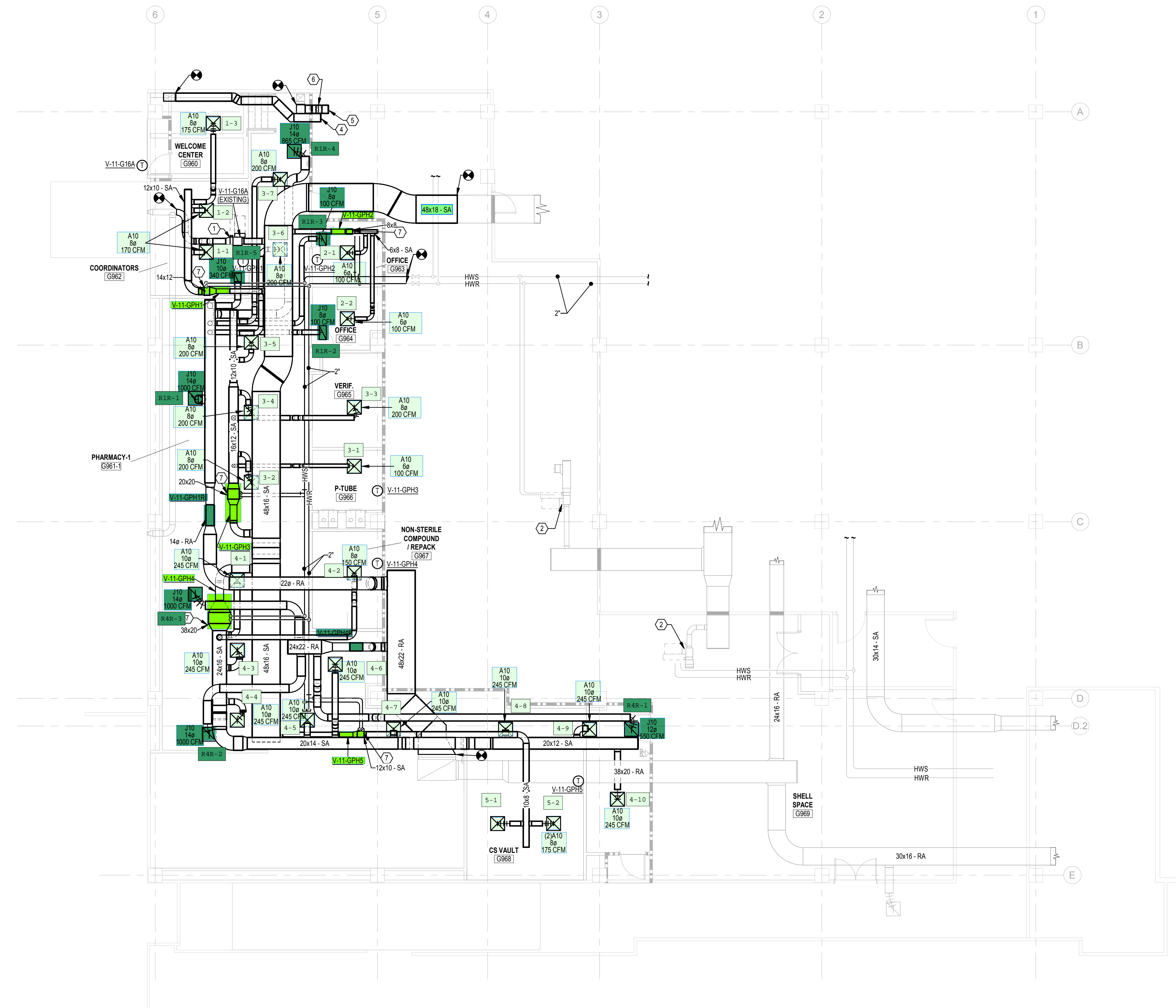
PLAN NOTES:

1. RELOCATE EXISTING VAV LOCATION SHOWN. REBALANCE TO CFM INDICATED.
2. REBALANCE EXISTING VAV TO 650 CFM MAX.
3. RELOCATE EXISTING THERMOSTAT FOR EXISTING VAV. EXTEND CONTROL WIRING FROM THERMOSTAT TO NEW VAV BOX LOCATION. CONNECT TO THE BAS.
4. CAPPED FOR PHASE TWO USP EXHAUST. HC SHALL COORDINATE NEW DAMPER ACCESS DOORS FOR EXISTING FIRE DAMPERS LOCATED IN SLAB ABOVE. DAMPERS SHOULD BE ACCESSIBLE FROM ABOVE CEILING ON GROUND FLOOR OR WALL AND DUCT ACCESS PANELS SHALL BE PROVIDED ON LEVEL 1 ABOVE.
5. CAPPED FOR PHASE TWO GENERAL EXHAUST. HC SHALL COORDINATE NEW DAMPER ACCESS DOORS FOR EXISTING FIRE DAMPERS LOCATED IN SLAB ABOVE. DAMPERS SHOULD BE ACCESSIBLE FROM ABOVE CEILING ON GROUND FLOOR OR WALL AND DUCT ACCESS PANELS SHALL BE PROVIDED ON LEVEL 1 ABOVE.
6. TRANSITION DUCT INTO OPEN SPACE BETWEEN BEAMS.
7. DUCT MOUNTED HEATING COIL FURNISHED WITH AIR VALVE.



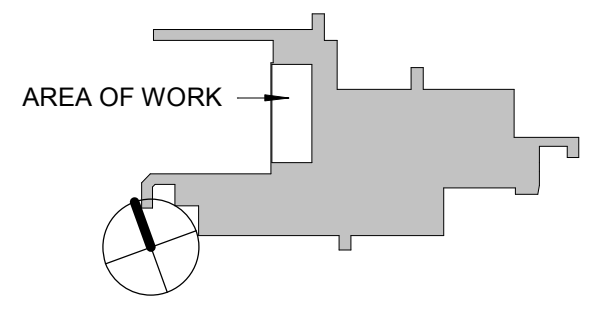
12/20/23 Date

1 ISSUED FOR PERMIT AND CONSTRUCTION Issue/Revision/Submission No.



1 PARTIAL GROUND FLOOR PLAN - NEW WORK
SCALE: 1/8" = 1'-0"

KEY PLAN



BHDP ARCHITECTURE
CINCINNATI
COLUMBUS
RALEIGH
CHARLOTTE
www.bhdp.com

BHDP
XX XX XX

UCMC PHASE I PHARMACY RELOCATION
3188 BELLEVUE AVENUE
CINCINNATI, OH 45219-2316
PARTIAL GROUND FLOOR PLAN - NEW

Project Manager
Approver
Drawn
SMG
Checked
BHS
Install Drawing Date
2023.12.20
Project Number
UCH0316



M101

This document is the property of Heapy Model (Donnelly) Precision, Inc. Neither the document nor the information it contains may be copied or used for other than the specific project for which it was prepared without the written consent of Heapy Model (Donnelly) Precision, Inc.