

BUILDING CODE DATA		
	CODE	
GENERAL	NEW YORK CITY BUILDING CODE	2022
HVAC/MECHANICAL	NEW YORK CITY MECHANICAL CODE	2022
PLUMBING	NEW YORK CITY PLUMBING CODE	2022
ELECTRICAL	NEW YORK CITY ELECTRIC CODE	2022
FIRE PROTECTION	NEW YORK CITY FIRE CODE	2022
	NFPA STANDARDS	CURRENT
FUEL	NEW YORK CITY FUEL GAS CODE	2022
ENERGY	NEW YORK CITY ENERGY CONSERVATION CODE	2022
LOCAL AMENDMENTS	N/A	N/A
NOTES:		
A. ALL WORK PERFORMED SHALL COMPLY WITH THE REQUIREMENTS OF THE LISTED CODES, LOCAL CODE AMENDMENTS, AND REFERENCED STANDARDS AS ENFORCED BY THE AUTHORITY HAVING JURISDICTION (AHJ).		
B. ALL WORK SUBJECT TO INSPECTION BY THE AHJ AT THE PROJECT SITE FOR COMPLIANCE		

PROJECT DESCRIPTION

THIS PROJECT CONSISTS OF A RESTAURANT TENANT FINISH OF AN EXISTING BUILDING. THE NEW MECHANICAL WORK INCLUDES A NEW HEAT PUMP SYSTEM, PROVIDING THE HEATING, COOLING, MAKE-UP AIR, AND VENTILATION FOR THE SPACE, A NEW GREASE EXHAUST HOOD AND EXHAUST FAN AND A NEW EXHAUST FAN SERVING THE RESTROOMS.

LIST OF SPECIAL & PROGRESS INSPECTIONS

SPECIAL INSPECTIONS:

- DEMOLITION [BC 1705.25.5.1]
- FIRE RESISTANT PENETRATIONS AND JOINTS [BC 1705.17]
- MECHANICAL SYSTEMS [BC 1714.16]
- SPRINKLER SYSTEMS [BC 1704.23]
- TENANT PROTECTION PLAN COMPLIANCE [BC 1705.26]

PROGRESS INSPECTIONS:

- ENERGY CODE COMPLIANCE INSPECTIONS [BC 110.3.5]
 - VESTIBULES (IUA9)
 - HVAC-R AND SERVICE WATER HEATING EQUIPMENT (IB3)
 - HVAC-R AND SERVICE WATER HEATING SYSTEM CONTROLS (IB4)
 - HVAC-R AND SERVICE WATER PIPING DESIGN AND INSULATION (IB5)
 - DUCT LEAKAGE TESTING, INSULATION AND DESIGN (IB5)
 - INTERIOR LIGHTING POWER (IIC3)
 - LIGHTING CONTROLS (IIC5)
 - MAINTENANCE INFORMATION (IID1)
- FINAL [28-116.2.4.2, BC109.5 AND DIRECTIVE 14/1975 AND 1 RCNY]

SECTION 15732 - PACKAGED ROOFTOP AIR-CONDITIONING UNITS

PART 1 - GENERAL

1.1 SECTION REQUIREMENTS

- Submittals: Product Data and Shop Drawings.
- Comply with ASHRAE 15.
- EER: Equal to or greater than prescribed by the energy code adopted by the Authority Having Jurisdiction.
- Warranties: Submit a written warranty, signed by the manufacturer, agreeing to the repair or replacement of components that fail within 5 years of Substantial Completion.

PART 2 - PRODUCTS

2.1 PACKAGED UNITS, 5 TO 20 TONS

- Factory assembled and tested, consisting of compressors, condensers, evaporator coils, condenser and evaporator fans, refrigeration and temperature controls, filters, and dampers.
 - Refer to Rooftop Heating/Cooling Unit Schedule on drawing M600 for capacities, and manufacturers.
 - Evaporator Fans: Belt or direct driven, forward curved centrifugal.
 - Exhaust/Relief Fans: Direct drive, forward curved centrifugal or propeller.
 - Condenser Fans: Direct drive propeller.
 - Refrigerant Coils: Aluminum fins and copper coil.
 - Compressors: Serviceable hermetic or fully hermetic, with safety controls, hot gas bypass, and timed off controls.
 - Heat Exchangers: Gas fired, with gas controls, electronic ignition, high limit cutoff, and forced draft proving switch.
 - Economizer controls (Comparative Enthalpy, 100% capacity).
 - Smoke Detectors: Photoelectric in supply and/or return as called for in schedule on sheet M600.
 - Operating Controls: Two stage heating and two stage cooling on units 7-1/2 tons and over.
 - Roof curb.
 - Control Wiring from T-stat to rooftop unit: Shall be 18ga / 7 conductor, rated for plenum applications.
 - Control Wiring from T-stat to remote sensor: Shall be a separate 18ga / 2 conductor shielded, rated for plenum applications.

PART 3 - EXECUTION

3.1 INSTALLATION

- Install units level and plumb and firmly anchored.
- Connect gas piping to burner with pipe same size as gas train inlet, and provide union with sufficient clearance for burner removal and service.
- Install ducts to termination in roof mounting frames. Terminate ducts through roof structure.
- Connect units to wiring systems and to ground.

END OF SECTION 15732

SECTION 15810 - DUCTS AND ACCESSORIES

PART 1 - GENERAL

1.1 SECTION REQUIREMENTS

- Submittals: Product Data for fire and smoke dampers.
- Comply with NFPA 90A for systems serving spaces more than 25,000 cu. ft. in volume or building Types II, IV, and V construction more than 3 stories in height.
- Comply with NFPA 90B for systems serving spaces in 1 or 2 family dwellings or serving spaces less than 25,000 cu. ft..
- Comply with NFPA 96, "Ventilation Control and Fire Protection of Commercial Cooking Operations," for kitchen hood ducts.
- Comply with UL 181 and UL 181A for ducts and closures.
- Testing, Adjusting, and Balancing Agency Qualifications: AABC certified (to be furnished by Tenant).

PART 2 - PRODUCTS

2.1 DUCTS

- Spiral Duct: Spiral Lock Seam, without insulation, G90 galvanized finish, ASTM A-653/G92
 - Basis of Design Manufacturers: Lindab SPIROsafe, alternates to the basis of design must be submitted for review.
 - Fittings: Factory produced standing seam construction with internal sealing. Fittings with a major axis of 36" or smaller shall be 20 gauge. Fittings with a major axis of 37"-48" shall be 18 gauge.
- Galvanized Steel Sheet: Forming steel, ASTM A 653/653M, G90 coating designation.
- Duct Liner: ASTM C 1071, Type II, with an airstream surface coated with a temperature resistant coating.
 - Adhesive: ASTM C 916, Type I.
 - Mechanical Fasteners: Galvanized steel pin, length as required to penetrate liner plus a 1/8 inch projection maximum into the airstream.
- Joint and Seam Tape: Comply with UL 181A.
- Joint and Seam Sealant: Comply with UL 181A.
- Rectangular Metal Duct Fabrication: Comply with SMACNA's "HVAC Duct Construction Standard" for metal thickness, reinforcing types and intervals, tie rod applications, and joint types and intervals.

2.2 ACCESSORIES

- Volume-Control Dampers: Factory fabricated volume control dampers, complete with required hardware and accessories. Single blade and multiple opposed blade, standard leakage rating, and suitable for horizontal or vertical applications.
- Fire Dampers: Factory-fabricated fire dampers, complete with required hardware and accessories. UL labeled according to UL 555, "Fire Dampers".
- Flexible Connectors: Flame retardant or noncombustible fabrics, coatings, and adhesives complying with UL 181, Class 1.
- Flexible Ducts: Factory fabricated, insulated, round duct, with an outer jacket enclosing 2 inch thick, glass fiber insulation, R-value: 6.0, around a continuous inner liner.

PART 3 - EXECUTION

3.1 INSTALLATION

- Duct System Pressure Class: Construct and install each duct system with 2 inch positive and negative duct pressure classifications.
- Conceal ducts from view in finished and occupied spaces. Except where noted as exposed.
- Avoid passing through electrical equipment spaces and enclosures.
- Support and connect metal ducts according to SMACNA's "HVAC Duct Construction Standard".
- Install duct accessories according to applicable portions of details of construction as shown in SMACNA standards.
- Install liner and/or insulation on ductwork per the material schedule on sheet M010.
- Install volume control dampers in lined duct with methods to avoid damage to liner and to avoid erosion of duct liner.
- Install fire and smoke dampers according to manufacturer's UL approved written instructions.
- Install fusible links in fire dampers.
- Provide saddle taps at tees for exposed ductwork.

3.2 TESTING, ADJUSTING, AND BALANCING

- The Tenant will supply an independent balance agent to to balance and adjust the HVAC installation. The balance agent will be responsible for any pulley or belt changes required.
- The GC is to have trained staffed available during the balancing to correct issues noted by the balance agent.
- The balance agent is to balance airflow within distribution systems, including submains, branches, and terminals to indicated quantities +/-10%. The hood exhaust system shall be balanced to a tolerance of -0+10% and the make-up air system to a tolerance of -10+0%.
- The balance agent is to supply a copy of the balance report to the Tenant, engineer and general contractor for review.

END OF SECTION 15810

SECTION 15855 - DIFFUSERS, REGISTERS, AND GRILLES

PART 1 - GENERAL

1.1 SECTION REQUIREMENTS

- Submittals: None.

PART 2 - PRODUCTS

2.1 OUTLETS AND INLETS

- All air terminal devices:
 - Refer to Grills, Registers, and Diffusers Schedule for equipment schedule
 - Manufacturer: As scheduled (NO SUBSTITUTIONS)
 - Material: As scheduled.
 - Finish: As scheduled.
 - Mounting: As scheduled.

PART 3 - EXECUTION

3.1 INSTALLATION

- Coordinate location and installation with duct installation and installation of other ceiling and wall mounted items.
- Locate ceiling diffusers, registers, and grilles, as indicated on the architectural "reflected ceiling plans." Unless otherwise indicated, locate units in center of acoustical ceiling panels.

END OF SECTION 15855

HVAC GENERAL NOTES

- GENERAL NOTES APPLY TO HVAC SHEETS.
- WORK SHALL COMPLY WITH STATE AND LOCAL CODE REQUIREMENTS AS APPROVED AND AMENDED BY THE AUTHORITY HAVING JURISDICTION, INCLUDING APPLICABLE SECTIONS OF NFPA, THE MECHANICAL CODE, AND ANY INTERIM AMENDMENTS AT THE TIME OF THE PROPOSAL. PURCHASE PERMITS ASSOCIATED WITH THE WORK. OBTAIN INSPECTIONS REQUIRED BY CODE. SEE ARCHITECTURAL SHEETS FOR THE PREVAILING CODES.
- CONTRACTOR AND SUBCONTRACTORS SHALL REVIEW A COMPLETE SET OF THE CONSTRUCTION DOCUMENTS.
- COORDINATE WORK WITH THE WORK OF OTHER TRADES, EQUIPMENT FURNISHED BY OTHERS, REQUIREMENTS OF THE OWNER, AND OF THE EXISTING CONDITIONS AT THE PROJECT SITE.
- DRAWINGS FOR THE MECHANICAL WORK ARE DIAGRAMMATIC, SHOWING THE GENERAL LOCATION, TYPE, LAYOUT, AND EQUIPMENT REQUIRED. THE DRAWING SHALL NOT BE SCALED FOR EXACT MEASUREMENTS, REFER TO ARCHITECTURAL DRAWINGS FOR DIMENSIONS. REFER TO MANUFACTURER'S STANDARD INSTALLATION DRAWINGS FOR EQUIPMENT CONNECTIONS AND INSTALLATION REQUIREMENTS. PROVIDE DUCTWORK, CONNECTIONS, OFFSETS, ACCESSORIES, AND MATERIALS NECESSARY FOR A COMPLETE SYSTEM.
- DUCT DIMENSIONS ON PLANS INDICATE DIMENSIONS OF INTERNAL FREE AREA.
- PERFORATED CEILING DIFFUSERS SHALL BE 4-WAY UNLESS NOTED OTHERWISE.
- COORDINATE ROOF WORK WITH THE OWNER'S CONSTRUCTION MANAGER PRIOR TO CONSTRUCTION.
- UNLESS NOTED OTHERWISE RECTANGULAR DUCT ELBOWS GREATER THAN 45° SHALL BE MITERED ELBOWS WITH DOUBLE-THICKNESS TURNING VANES AND RECTANGULAR DUCT ELBOWS 45° OR LESS SHALL BE RADIUSSED ELBOWS WITH AN INSIDE RADIUS OF AT LEAST 1/2 THE WIDTH OF THE DUCT.
- REPLACE AIR FILTERS WITH NEW, CLEAN MERV 8 AIR FILTERS AT TURNOVER.
- THE TERM "FURNISH" MEANS SUPPLY AND DELIVER TO THE PROJECT SITE, READY FOR UNLOADING, UNPACKING, ASSEMBLY, INSTALLATION, AND SIMILAR OPERATIONS. THE TERM "INSTALL" DESCRIBES THE OPERATIONS AT THE PROJECT SITE INCLUDING THE ACTUAL UNLOADING, UNPACKING, ASSEMBLY, ERECTING, PLACING, ANCHORING, APPLYING, WORKING TO DIMENSION, FINISHING, CURING, PROTECTING, CLEANING, AND SIMILAR OPERATIONS. THE TERM "PROVIDE" MEANS TO FURNISH AND INSTALL, COMPLETE AND READY FOR THE INTENDED USE.
- INSTALL LABELING CALLED FOR IN THE MECHANICAL DRAWINGS USING ENGRAVED PHENOLIC PLATES (WITH BLACK LETTERING).
- PROVIDE P3000 12 GA. UNISTRUT WITH PG FINISH FOR DUCT SUPPORTS AND OTHER UNISTRUT IN AREAS EXPOSED TO VIEW. SLOTTED UNISTRUT AND OTHER UNISTRUT WITH HOLES IS NOT ACCEPTABLE.

HVAC MATERIAL SCHEDULE

	APPLICATION	ALLOWABLE MATERIAL
DUCT		
	CONCEALED, GENERAL EXHAUST	RECT. OR ROUND AS SHOWN
	CONCEALED, RETURN	RECT. OR ROUND AS SHOWN, LINED OR INSULATED
	CONCEALED, SUPPLY	RECT. OR ROUND AS SHOWN, LINED OR INSULATED
	CONCEALED, TYPE I HOOD EXHAUST	RECTANGULAR 16 GA. BLACK IRON W/ WRAP OR UL 1978 FACTORY-MANUFACTURED DUCT W/ WRAP (SUBMIT SHOP DRAWINGS FOR FACTORY-MANUFACTURED DUCT PRIOR TO ORDERING FOR APPROVAL)
	EXPOSED GENERAL EXHAUST	RECTANGULAR, NO EXPOSED DUCT-SEALING MASTIC
	EXPOSED RETURN	RECTANGULAR, NO EXPOSED DUCT-SEALING MASTIC
	EXPOSED SUPPLY	RECT. LINED OR ROUND AS SHOWN, NO EXPOSED DUCT-SEALING MASTIC

HVAC ABBREVIATIONS

(E)	EXISTING
ABV	ABOVE
ADA	AMERICANS WITH DISABILITIES ACT
AFB	ABOVE FINISHED FLOOR
AFG	ABOVE FINISHED GRADE
AHJ	AUTHORITY HAVING JURISDICTION
BFF	BELOW FINISHED FLOOR
BFG	BELOW FINISHED GRADE
BOH	BACK OF HOUSE
CLG	CEILING
CTE	CONNECT TO EXISTING
DN	DOWN
EXT'G	EXISTING
FLR	FLOOR
FOH	FRONT OF HOUSE
GYP	GYPSUM BOARD
NTS	NOT TO SCALE
O/H	OVERHEAD
OBD	OPPOSED BLADE DAMPER
TYP	TYPICAL
U/G	UNDERGROUND
UNO	UNLESS NOTED OTHERWISE
VFD	VARIABLE FREQUENCY DRIVE
VSC	VARIABLE SPEED CONTROLLER
W/	WITH
WIC	WALK-IN COOLER

CO2AS	TENANT'S CO2 ALARM SUPPLIER
GC	GENERAL CONTRACTOR
HES	TENANT'S HVAC EQUIPMENT SUPPLIER
HS	TENANT'S HOOD SUPPLIER
KES	TENANT'S KITCHEN EQUIPMENT SUPPLIER
LL	LANDLORD
MSS	TENANT'S MUSIC SYSTEMS SUPPLIER
SPS	TENANT'S SODA POP SUPPLIER
TAB	TENANT'S TEST AND BALANCE VENDOR
TCC	TENANT'S CABLING CONTRACTOR
TDC	TENANT'S DUCT CLEANER
TEMS	TENANT'S ENERGY MANAGEMENT SYSTEM SUPPLIER
TLS	TENANT'S LIGHT/LAMP SUPPLIER
TMB	TENANT'S MENU BOARD SUPPLIER
TMS	TENANT'S MILLWORK SUPPLIER
TP	TENANT'S PHONE SUPPLIER
TPS	TENANT'S PANELBOARD SUPPLIER
TRS	TENANT'S RAILING SUPPLIER
TSV	TENANT'S SIGN VENDOR
TUV	TENANT'S UV SMATIZER SUPPLIER
WCS	TENANT'S WALK-IN COOLER SUPPLIER
WHS	TENANT'S WATER HEATER SUPPLIER

HVAC SYMBOLS

	CEILING DIFFUSER
	CEILING-MOUNTED RETURN OR EXHAUST REGISTER
	SUPPLY REGISTER
	RETURN GRILLE
	FLEXIBLE DUCT
	MITERED CORNER WITH TURNING VANES
	DUCTWORK INTERNAL FREE DIMENSIONS (WIDTH/HEIGHT)
	RECTANGULAR TO ROUND DUCT TRANSITION
	DUCT-MOUNTED SMOKE DETECTOR
	MOTOR-OPERATED DAMPER
	MANUAL VOLUME DAMPER
	GREASE DUCT CLEANOUT
	MITERED CORNER WITHOUT TURNING VANES
	GRIDPOINT THERMOSTAT
	GRIDPOINT ZONE SENSOR MODULE
	GRIDPOINT SUPPLY PROBE
	PLAN NOTE: SEE PLAN NOTES LISTED ON THE SAME SHEET FOR NOTE MEANING
	CONNECT TO EXISTING
	EQUIPMENT TAG: SEE EQUIPMENT SCHEDULE ON SHEET M600 FOR EQUIPMENT INFORMATION
	AUDIO/VISUAL REMOTE SMOKE DETECTOR ANNUNCIATOR WITH REMOTE KEY OPERATED RESET
	GRILL, REGISTER, OR DIFFUSER TAG: TAG NECK SIZE AIRFLOW [CFM]

CHD	DATE	REVISION
5		
4		
3	04/09/25	CONSTRUCTION SET
2	03/20/25	UPDATED PERMIT SET
1	11/05/24	BULLETIN 1
0	10/17/24	PERMIT SET

PROJ.: 230435
DATE: 08/30/2024
DRAWN BY: J. BOWMAN
CHECKED BY: J. BOWMAN
THIS DRAWING AND ALL INFORMATION CONTAINED HEREIN ARE UNPUBLISHED WORK AND ARE NOT TO BE REPRODUCED, COPIED, OR TRANSMITTED IN ANY MANNER WITHOUT THE WRITTEN CONSENT OF BOWMAN CONSULTING, LLC. © 2024 BOWMAN CONSULTING, LLC. ALL RIGHTS RESERVED.

Bowman

WARNING: IT IS A VIOLATION OF THE PROFESSIONAL ENGINEER, LAND SURVEYOR OR UNDER THE DIRECTION OF THE LICENSED PROFESSIONAL ENGINEER, LAND SURVEYOR OR LANDSCAPE ARCHITECT WHO SIGNED THIS DRAWING, TO ALTER THIS DRAWING IN ANY WAY.

DOS ID: 2840131
Phone: 973-359-9400
www.bowmanconsulting.com
E-mail: NJ@BowmanConsulting.com

Bowman Consulting Engineering, Land Surveying & Landscape Architecture
54 Hazelgall Road, Suite 100
Brooklyn, NY 11225
www.bowmanconsulting.com

Walter Shoup, N.Y. Professional Engineer, Lic. 110146

CHIPOTLE MEXICAN GRILL, INC.
1730 BEDFORD AVE.
BROOKLYN, NY 11225

SHEET 1 OF 4
SHEET TITLE:

M-010.00

HVAC SPECIFICATIONS

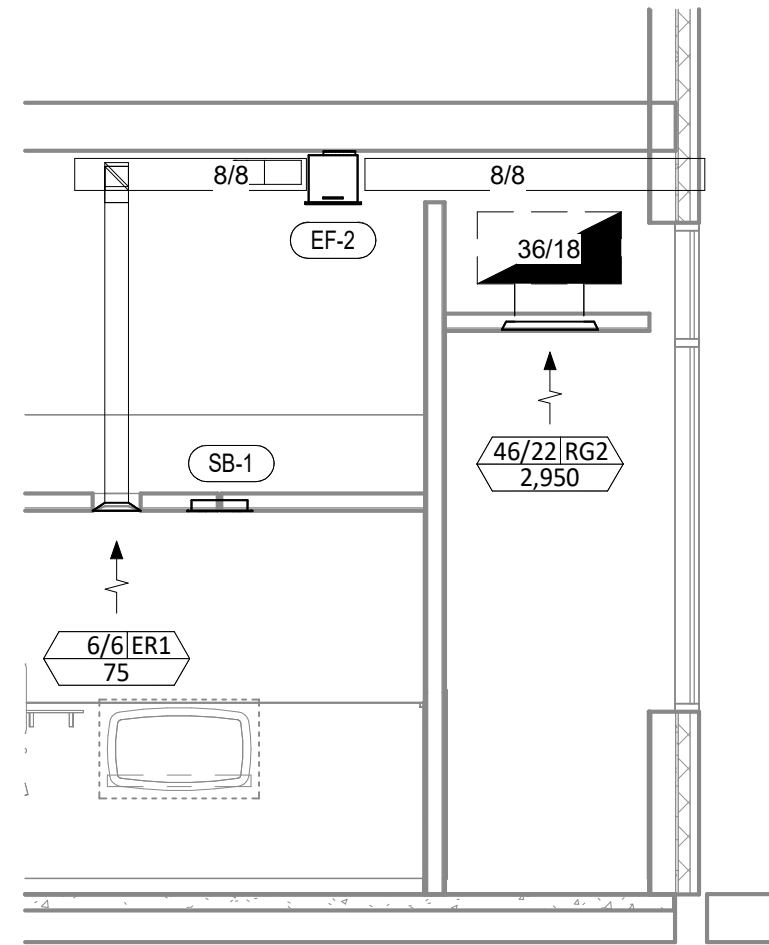
DOB NOW Job# B01156614-51

HVAC PLAN NOTES

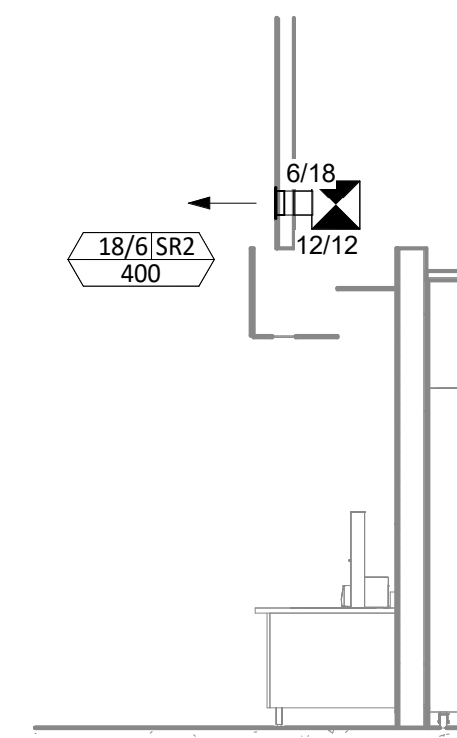
- SEE ARCHITECTURAL REFLECTED CEILING PLAN FOR CEILING MOUNTED EQUIPMENT LOCATION. TYPICAL.
- PAINT DUCTWORK VISIBLE THROUGH DINING ROOM SUPPLY REGISTERS BLACK. TYPICAL.
- NOT USED.
- INSTALL HP-2A-1 AND HP-2B-1 HANGING PER STRUCTURAL DRAWINGS. PROVIDE MIXING BOX WITH 18/18 RA AND OA CONNECTIONS. ENSURE ALL MANUFACTURER SERVICE CLEARANCE REQUIREMENTS ARE SATISFIED. ROUTE REFRIGERANT LINESET (SIZED BY MANUFACTURER) TO ASSOCIATED HEAT PUMP OUTDOOR UNIT ON ROOF. SEE SCHEDULE AND DETAIL FOR MORE INFORMATION.
- INSTALL HP-1A AND HP-1B-1 HANGING PER STRUCTURAL DRAWINGS. ENSURE ALL MANUFACTURER SERVICE CLEARANCE REQUIREMENTS ARE SATISFIED. ROUTE REFRIGERANT LINESET (SIZED BY MANUFACTURER) TO ASSOCIATED HEAT PUMP OUTDOOR UNIT ON ROOF. SEE SCHEDULE AND DETAIL FOR MORE INFORMATION.
- 10/18 EXHAUST DUCT UP THROUGH ROOF. SEE ROOF PLAN FOR ROOF DUCTING TO EF-1.
- SLOPE GREASE EXHAUST DUCT A MINIMUM OF 1/4" PER FOOT.
- INSTALL LOUVER'S L-2 IN WINDOW BAY PER ARCHITECTURAL DRAWINGS. SEE SCHEDULE FOR MORE INFORMATION.
- INSTALL LOUVERS L-1 IN WINDOW BAY PER ARCHITECTURAL DRAWINGS. PROVIDE MOTORIZED DAMPER, SEE SCHEDULE FOR MORE INFORMATION.
- NOT USED.
- NOT USED.
- NOT USED.
- INSTALL SINGLE-GANG VERTICAL J-BOX FOR GRIDPOINT THERMOSTATS FURNISHED BY TEMS FOR RTU-1 AND RTU-2 AT THIS LOCATION AT 48" AFF. COORDINATE WITH ELECTRICAL SWITCHING IN THIS AREA. PROVIDE WIRING AS SHOWN IN DETAIL 8/E710.
- INSTALL GRIDPOINT ZONE SENSOR MODULE FURNISHED BY TEMS FOR HP-1 AT THIS LOCATION 72" AFF DIRECTLY TO WALL (NO JUNCTION BOX). COORDINATE LOCATION WITH EQUIPMENT. PROVIDE WIRING AS SHOWN IN DETAIL 8/E710.
- INSTALL GRIDPOINT ZONE SENSOR MODULE FURNISHED BY TEMS FOR HP-2 AT THIS LOCATION 66" AFF DIRECTLY TO WALL (NO JUNCTION BOX). COORDINATE LOCATION WITH EQUIPMENT. PROVIDE WIRING AS SHOWN IN DETAIL 8/E710.
- INSTALL GRIDPOINT SUPPLY PROBE FURNISHED BY TEMS FOR HP-1 IN THE SUPPLY DUCTWORK UPSTREAM FROM THE FIRST BRANCH CONNECTION. PROVIDE WIRING AS SHOWN IN DETAIL 8/E710.
- INSTALL GRIDPOINT SUPPLY PROBE FURNISHED BY TEMS FOR HP-2 IN THE SUPPLY DUCTWORK UPSTREAM FROM THE FIRST BRANCH CONNECTION. PROVIDE WIRING AS SHOWN IN DETAIL 8/E710.
- INSTALL REMOTE TEMPERATURE SENSOR FOR HOOD HD-1 AT THIS LOCATION 72" AFF. COORDINATE LOCATION WITH EQUIPMENT. PROVIDE (2) #18 G. THERMISTOR CABLE FROM TEMPERATURE SENSOR TO HOOD CONTROL PANEL.
- INSTALL KITCHEN HOOD, HD-1. SUPPORT HOOD PER MANUFACTURER'S INSTALLATION INSTRUCTIONS AND AS DETAILED IN THE ARCHITECTURAL AND STRUCTURAL DRAWINGS. INSTALL HOOD ACCORDING TO THE REQUIREMENTS OF ITS LISTING, IN COMPLIANCE WITH NFPA 96, THE BUILDING CODE, AND AUTHORITIES HAVING JURISDICTION. HOOD SHALL HAVE AN INTEGRAL DUCT COLLAR TEMPERATURE SENSOR TO AUTOMATICALLY ENERGIZE THE EXHAUST AND HEAT PUMP INDOOR UNIT FANS IF COOKING TEMPERATURES ARE DETECTED. EXHAUST DUCT SYSTEM TO BE WELDED OR FACTORY-MANUFACTURED WATER AND AIR TIGHT. INSTALL CLEANOUTS PER CODE AND AS SHOWN. INSTALL HOOD PER DETAILS 2, 4, AND 9/M700. CHIPOTLE WILL PROVIDE AN INDEPENDENT TESTING AGENCY FOR TESTING THE INTEGRITY OF THE GREASE DUCT SYSTEM.

HVAC PLAN NOTES

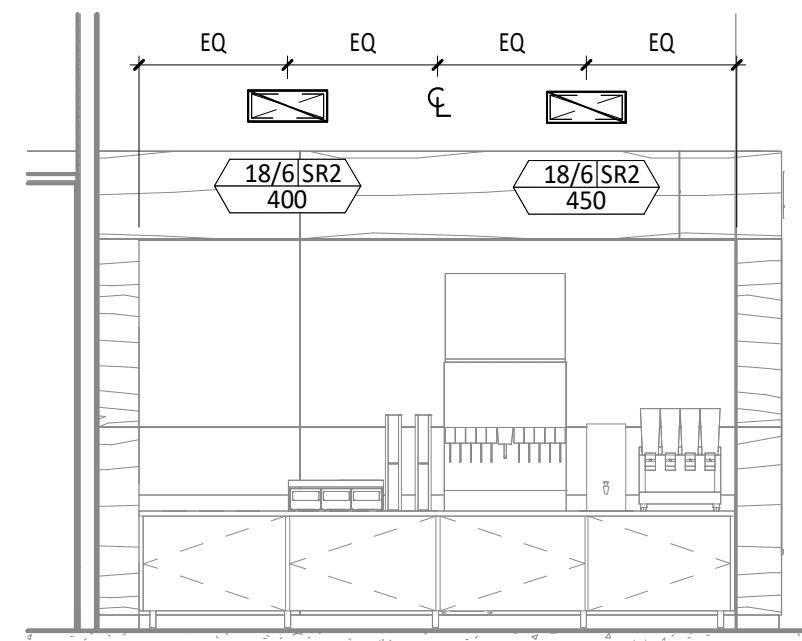
- INSTALL REMOTE CONDENSING UNIT FOR WALK-IN COOLER HANGING FROM STRUCTURE AS DETAILED IN THE ARCHITECTURAL AND STRUCTURAL DRAWINGS. INSTALL REFRIGERANT LINE SET, THERMOSTATIC EXPANSION VALVE, SOLENOID VALVE, TEMPERATURE CONTROL, SIGHT GLASS, FILTER DRIER, PRESSURE CONTROL, LOW AMBIENT CONTROLS, AND WEATHERPROOF HOUSING. TRAP AND SLOPE REFRIGERANT LINES PER MANUFACTURER'S RECOMMENDATIONS. INSTALLATION SHALL COMPLY WITH ASHRAE/ANSI STANDARD 15. CUT 2-1/2" HOLE IN WALK-IN COOLER ROOF FOR REFRIGERANT LINE SET AND SEAL PER THE COOLER MANUFACTURER'S INSTALLATION INSTRUCTIONS AFTER LINE SET IS INSTALLED.
- INSTALL REMOTE CONDENSER FOR ICE MACHINE HANGING FROM STRUCTURE AS DETAILED IN THE ARCHITECTURAL AND STRUCTURAL DRAWINGS. INSTALL REFRIGERANT LINE SET, THERMOSTATIC EXPANSION VALVE, SOLENOID VALVE, TEMPERATURE CONTROL, SIGHT GLASS, FILTER DRIER, PRESSURE CONTROL, LOW AMBIENT CONTROLS, AND WEATHERPROOF HOUSING. TRAP AND SLOPE REFRIGERANT LINES PER MANUFACTURER'S RECOMMENDATIONS. SEAL PIPING PENETRATIONS THROUGH ROOF. INSTALLATION SHALL COMPLY WITH ASHRAE/ANSI STANDARD 15. IF REFRIGERANT PIPING TO ICE MAKER IS EXPOSED TO PUBLIC VIEW CONCEAL WITHIN A STAINLESS STEEL SHROUD AS SHOWN IN THE ARCHITECTURAL DRAWINGS.
- INSTALL ROOFTOP EQUIPMENT PER MANUFACTURER'S INSTALLATION INSTRUCTIONS AND AS DETAILED IN THE ARCHITECTURAL AND STRUCTURAL DRAWINGS.
- INSTALL EXHAUST FAN EF-1 PER DETAIL 5/M700 AND AS DETAILED IN THE ARCHITECTURAL AND STRUCTURAL DRAWINGS.
- PROVIDE SUPPLY DIFFUSER CONNECTION TO SUPPLY SYSTEM PER DETAIL 1/M700. TYPICAL.
- PROVIDE AUDIO/VISUAL REMOTE SMOKE DETECTOR ANNUNCIATOR WITH REMOTE KEY OPERATED RESET. WIRE A UNIT BACK TO EACH SMOKE DETECTOR. MOUNT UNIT 60" AFF. TYPICAL.
- INSTALL REME HALO AIR PURIFIER FURNISHED BY TUV IN RTU PER DETAIL 6/M700. SEE ELECTRICAL DRAWINGS FOR POWER CONNECTION INFORMATION. INSTALL UV WARNING STICKERS ON FACE OF ENCLOSURE PER DETAIL AND ON ANY RTU ACCESS DOOR(S) THROUGH WHICH THE REME HALO WOULD BE VISIBLE IF OPENED.
- ADJUST SUPPLY REGISTERS SO THAT SUPPLY AIR HITS WALL ON OPPOSITE SIDE OF ROOM AT APPROXIMATELY 7' AFF WITH NO DRAFTS FELT IN THE DINING ROOM.
- INSTALL HEAT PUMP OUTDOOR UNIT ON SNOW LEGS PER DETAIL 10/M700. SEE SCHEDULE FOR MORE INFORMATION.
- 8" EXHAUST AIR WALL CAP, MOUNT AT 10'-0" A.F.F. ON CENTER.
- 10X18 GREASE EXHAUST DUCT DOWN IN CHASE.
- TRANSFER GRILL OPEN TO AREA ABOVE CEILING.
- PROVIDE GREASE DUCT CLEANOUT.
- ENSURE 6' FIRE DEPARTMENT WALKING CLEARANCE IS MET FOR UNIT INSTALLATION. SEE ARCHITECTURAL SHEETS FOR MORE INFORMATION.
- INSTALL DUCT HEATER IN OUTSIDE AIR DUCT PER MANUFACTURER'S INSTALLATION DETAILS.
- PROVIDE ACCESS PANEL IN WALL FOR DUCT HEATER SERVICE.



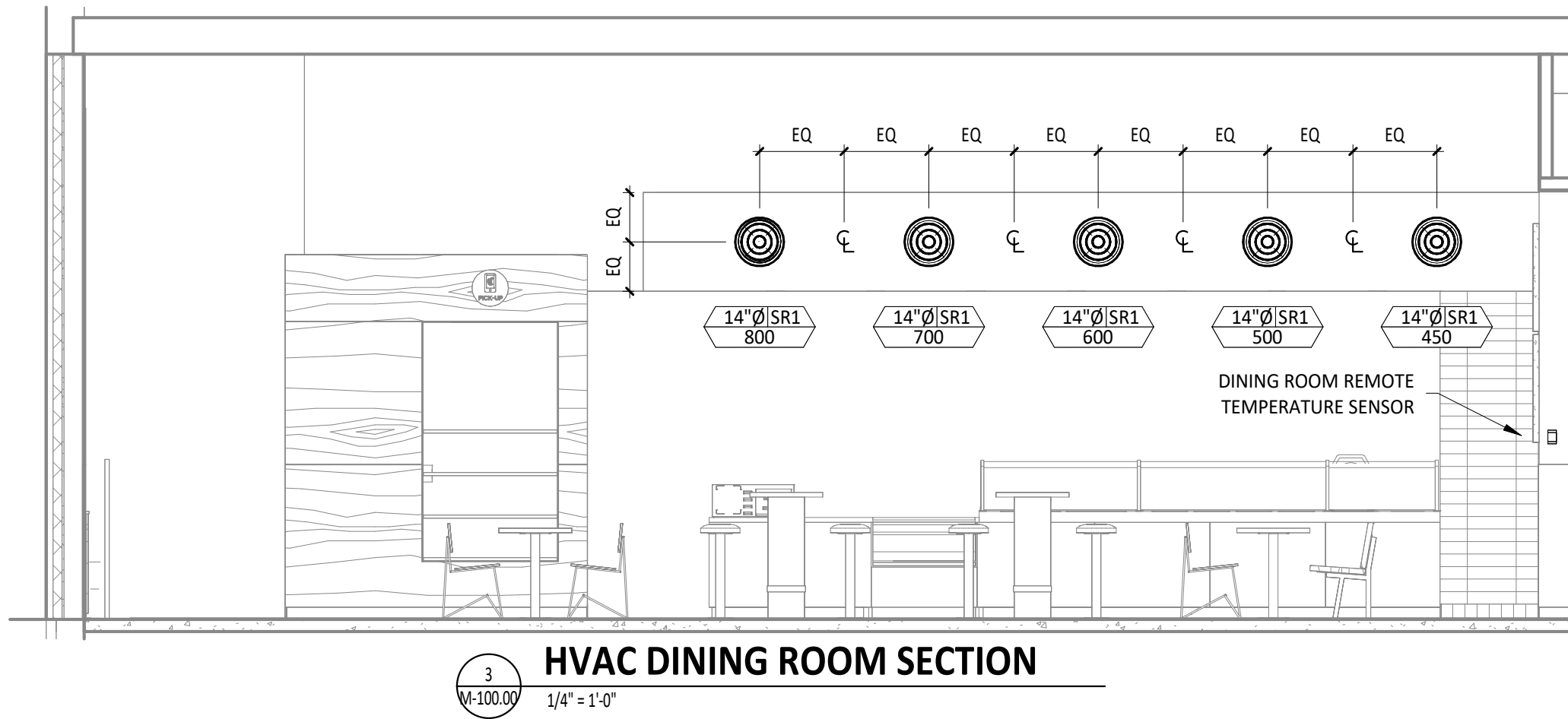
HVAC DINING ROOM RETURN SECTION
1/4" = 1'-0"



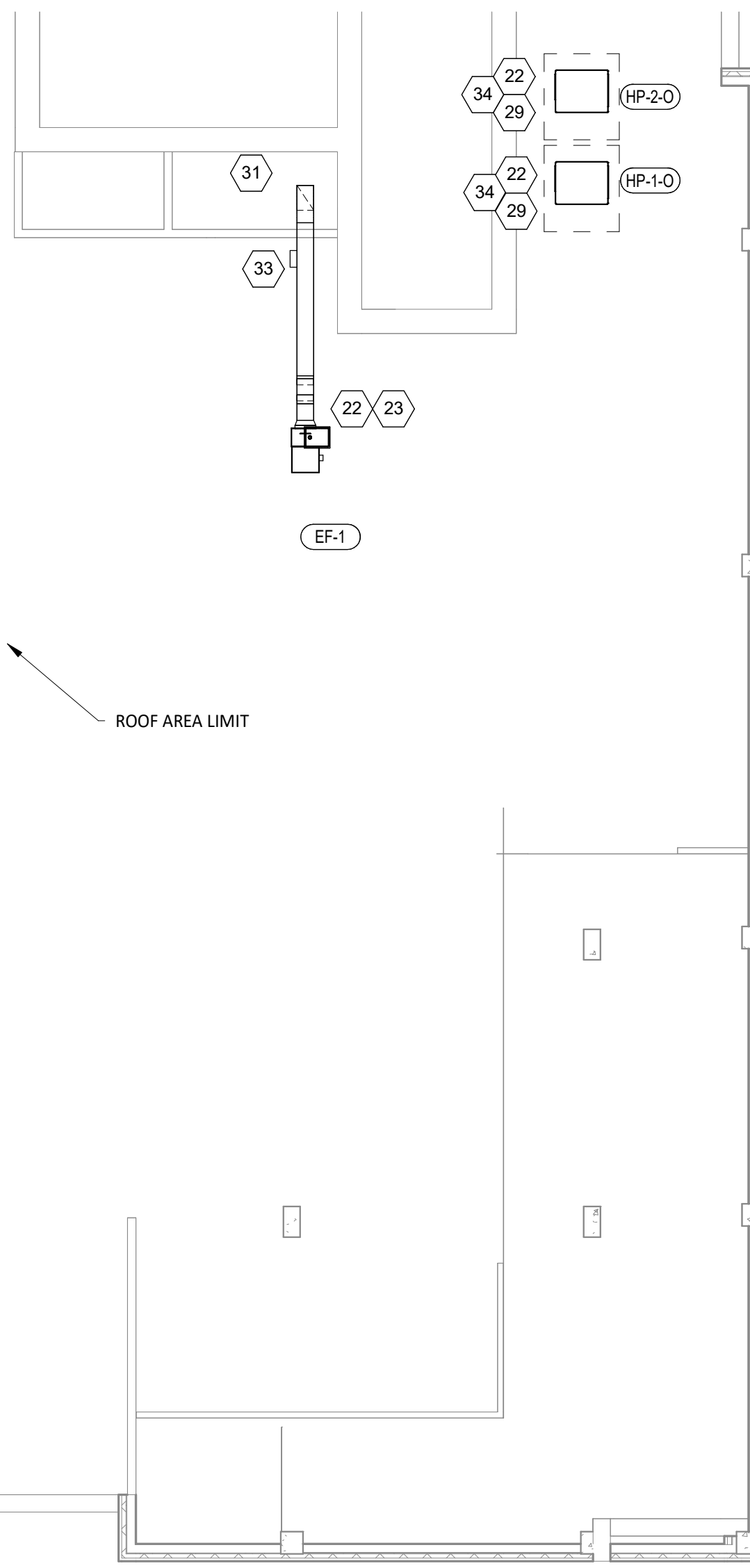
HVAC DINING ROOM SECTION
1/4" = 1'-0"



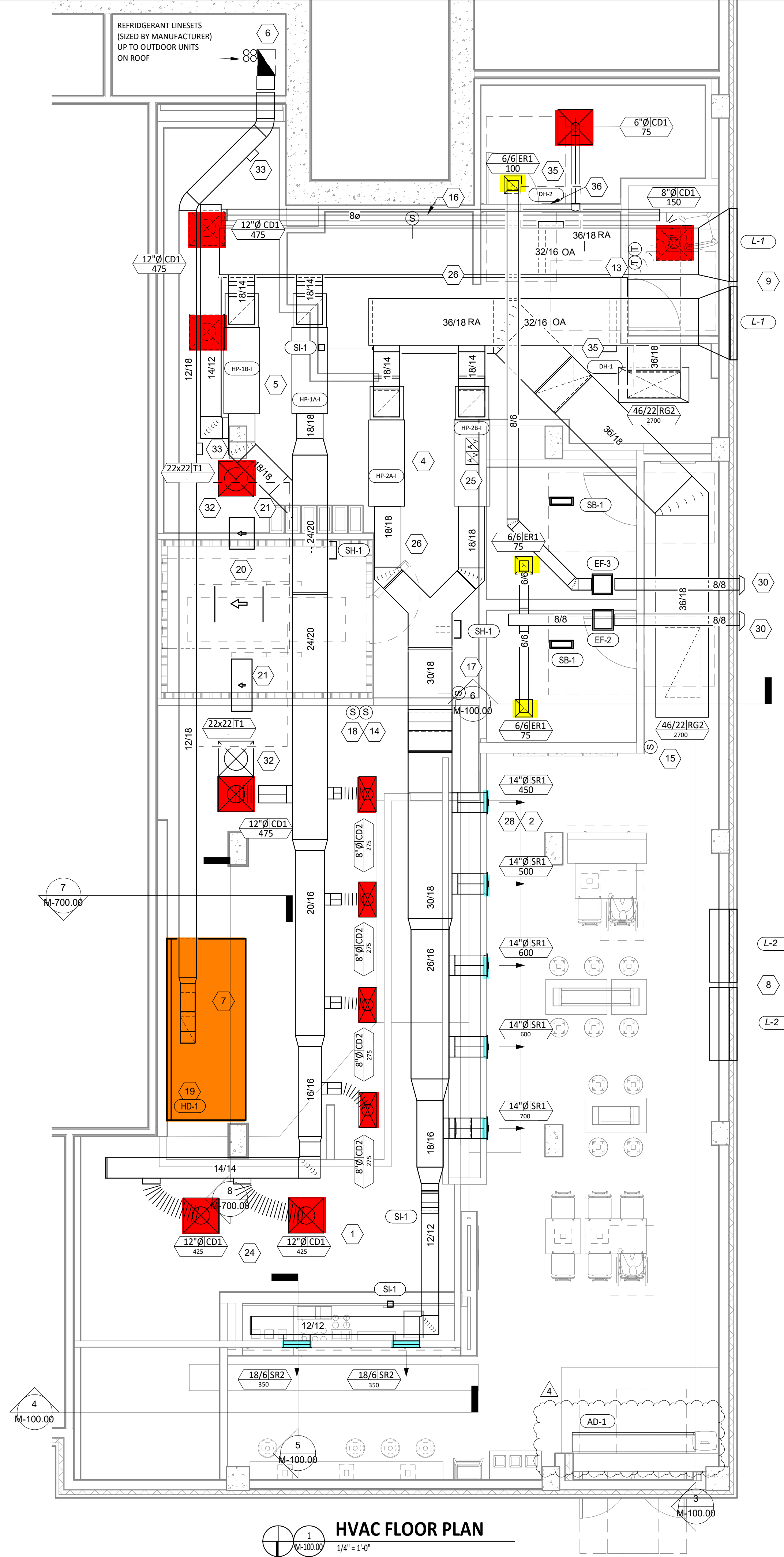
HVAC DINING ROOM SECTION
1/4" = 1'-0"



HVAC DINING ROOM SECTION
1/4" = 1'-0"



HVAC ROOF PLAN
1/8" = 1'-0"



HVAC FLOOR PLAN
1/4" = 1'-0"

NO.	DATE	DESCRIPTION
1	04/16/25	CONSTRUCTION SET
2	04/09/25	UPDATED PERMIT SET
3	03/20/25	BULLETIN 1
4	11/05/24	PERMIT SET
5	10/17/24	PERMIT SET

PROJ: 230435
DATE: 09/30/2024
DRAWN BY: J. BOWMAN
CHECKED BY: J. BOWMAN
SCALE: AS SHOWN
FOR ALL INFORMATION CONTACT THE PROJECT MANAGER AT 875-355-9400 OR WWW.BOWMANCONSULTING.COM
REVISIONS WILL BE MADE TO THIS DRAWING AS NECESSARY TO REFLECT THE LATEST INFORMATION PROVIDED BY THE CLIENT OR THE ARCHITECT. ALL RIGHTS RESERVED.
© 2024 BOWMAN CONSULTING, LLC. ALL RIGHTS RESERVED.

Bowman
WARNING: IT IS A VIOLATION OF ANY PERSON'S LICENSE AS AN ENGINEER, ARCHITECT, OR LANDSCAPE ARCHITECT TO REPRODUCE OR TRANSMIT THIS DRAWING IN ANY MANNER WITHOUT THE WRITTEN PERMISSION OF BOWMAN CONSULTING, LLC. ANY REPRODUCTION OF THIS DRAWING WITHOUT THE WRITTEN PERMISSION OF BOWMAN CONSULTING, LLC IS STRICTLY PROHIBITED.
LANDSCAPE ARCHITECT WHO SIGNED THIS DRAWING TO ALTER THIS DRAWING IN ANY WAY.

DOS ID: 2840131
Phone: 875-355-9400
www.bowmanconsulting.com
E-mail: NJ@BowmanConsulting.com
Bowman Consulting Engineering, Land Surveying & Landscape Architecture
54 Horseshoe Road, Suite 100
Brooklyn, NY 11225
www.bowmanconsulting.com

CHIPOTLE MEXICAN GRILL, INC.
**1730 BEDFORD AVE.
BROOKLYN, NY 11225**

SHEET 2 OF 4
SHEET TITLE:
M-100.00
HVAC PLAN - 1ST FLOOR LOWER LEVEL
DOB NOW Job# B01156614-51

AIR DOOR SCHEDULE											
TAG	MANUFACTURER	MODEL	AIRFLOW			ELECTRICAL			FURNISHED BY	INSTALLED BY	
			MAX SPEED	AVERAGE SPEED	CFM	POWER	VOLTS/PHASE/HZ	MCA			
AD-1	BERNER	A108107ZE	2149	1582	1780	11.2 KW	208/3/60	32.8	45	GC	GC

AIR BALANCE SCHEDULE				
TAG	SUPPLY	RETURN	OUTSIDE AIR	EXHAUST AIR
HP-1A-I	1800	1250	550	-
HP-1B-I	1800	1250	550	-
HP-2A-I	1800	1250	550	-
HP-2B-I	1800	1250	550	-
EF-1	-	-	-	1900
EF-2	-	-	-	150
EF-3	-	-	-	100
TOTAL			2200	2150
NET PRESSURIZATION=			+50	

CONTROL FUNCTIONS

A. THE MAIN COOKING EXHAUST FAN AND HEAT PUMP UNIT SHALL BE INTERLOCKED TO OPERATE TOGETHER. THIS CONTROL CIRCUIT IS ACTIVATED BY A SWITCH AND INCLUDES A FIRE PROTECTION OVERRIDE.

B. THE TEMPERATURE IN EACH ZONE IS CONTROLLED BY SPACE TEMPERATURE SENSORS CONNECTED TO THE THERMOSTATS LOCATED IN THE OFFICE. ALL ZONES SHALL OPERATE WITH CONTINUOUS FAN OPERATION DURING OCCUPIED TIMES AND INTERMITTENTLY AS NEEDED TO MAINTAIN SET POINTS DURING UNOCCUPIED TIMES. OUTSIDE AIR DAMPERS SHALL BE OPEN CONTINUOUSLY WHEN EITHER IN OCCUPIED MODE OR WHEN THE HOOD SYSTEM IS ON AND SHALL BE CLOSED DURING UNOCCUPIED PERIODS.

C. THE THERMOSTATS SHALL DETERMINE OCCUPIED/UNOCCUPIED STATUS BASED ON THE SCHEDULE IN THE ENERGY MANAGEMENT SYSTEM.

LOUVER SCHEDULE										
TAG	MANUFACTURER	MODEL	MATERIAL	COLOR	SIZE (INCHES) WIDTH/HEIGHT	FREE AREA (SQ. FT.)	FLOW (CFM)	PRESS. DROP (IN. WC)	SERVES	NOTES
L-1	GREENHECK	SED-501	ALUMINIUM	BY ARCH	50x27	4.8	3600	0.24	HP-1/2 OA	1-5
L-2	GREENHECK	SED-501	ALUMINIUM	BY ARCH	50x27	4.8	3600	0.24	HP-1/2 RELIEF	1-4, 6

NOTES:

- COLOR AS SPECIFIED BY ARCHITECT.
- WITH BIRD SCREEN.
- WITH FACE FLANGE.
- FREE AREA LISTED IS MINIMUM REQUIRED.
- WITH MOTORIZED DAMPER.
- WITH RELIEF DAMPER SET TO OPEN AT +0.1" W.C. (ADJUSTABLE).

EQUALS BY: ENGINEER APPROVED EQUAL.

CONDENSING UNIT SCHEDULE															
TAG	DESCRIPTION	NOMINAL CAPACITY	NUMBER OF		REFRIGERANT		ELECTRICAL			FURNISHED BY	INSTALLED BY	BASIS FOR DESIGN		REMARKS	
			COMPRESSORS	CIRCUITS	TYPE	CHARGE	WEIGHT	MOCP	FLA			V/P/H	MANUFACTURER		MODEL
CU-1	CONDENSING UNIT - WALK-IN COOLER		1	1	R-404A	10.4 lb	250 lb	15 A	9 A	208/3/60	WCS	GC	HARFORD	KPCL95M20P-3E	FURNISHED WITH WALK-IN COOLER
CU-2	REMOTE CONDENSER - LOW CAPACITY ICE MAKER		0	1	R-404A	11.46 lb	100 lb			120/1/60	KES	GC	HOSHIZAKI	URC-9FZ	FURNISHED WITH ICE MAKER
CU-3	REMOTE CONDENSER - SODA MACHINE ICE MAKER		0	1	R-404A	3.86 lb	100 lb			120/1/60	KES	GC	HOSHIZAKI	URC-5FZ	FURNISHED WITH ICE MAKER

HEAT PUMP SCHEDULE																			
TAG	MANUFACTURER	MODEL	SERVICE	OPERATING CONDITIONS			SUPPLY FAN DATA			ELECTRICAL DATA			COOLING		HEAT PUMP HEATING		OP. WT. (LBS)	NOTES	
				OAT DB (DEG F.)	OAT WB (DEG F.)	COIL EAT (DEG F.)	MOTOR POWER (HP)	E.S.P. (In. W.C.)	AIRFLOW (CFM)	VOLTS/PH	MOP	MCA	IEER	EER	NET CAPACITY (MBH)	SENS CAPACITY (MBH)			AT 17 DEG F. COP
HP-1-O	YORK	YVAHP144B32S	BOH	92	74	-	-	-	208/3	70	58	21.2	11.2	138	114	2.15	110	723	A-F
HP-1A-I	YORK	TIAH060B22M	BOH	92	74	83.2	0.75	0.8	1800	208/1	30	29	-	65	53.8	-	56	168	G,H,I
HP-1B-I	YORK	TIAH060B22M	BOH	92	74	83.2	0.75	0.8	1800	208/1	30	29	-	65	53.8	-	56	168	G,H,I
HP-2-O	YORK	YVAHP144B32S	FOH	92	74	-	-	-	208/3	70	58	21.2	11.2	138	114	2.15	110	723	A-F
HP-2A-I	YORK	TIAH060B22M	FOH	92	74	83.2	0.75	0.8	1800	208/1	30	29	-	65	53.8	-	56	168	G,H,I
HP-2B-I	YORK	TIAH060B22M	FOH	92	74	83.2	0.75	0.8	1800	208/1	30	29	-	65	53.8	-	56	168	G,H,I

NOTES:

- REFRIGERANT LINE SET, SIZED BY MANUFACTURER.
- ANTI-SHORT CYCLE TIMER.
- COMPRESSOR HARD START KIT.
- SNOW LEGS WITH EXTENSIONS, 10" TOTAL LENGTH.
- CRANKCASE HEATER KIT.
- LEVEL 4" CONCRETE PAD BY M.C.
- WITH CONDENSATE HIGH WATER LEVEL SENSOR AND SHUT-DOWN CONTROLS.
- WITH MICROMETL MB-GP20CB-DCDS MIXING BOX AND ECONOMIZER CONTROLS.
- WITH 5 KW ELECTRIC BACKUP HEATER (SINGLE POWER CONNECTION FOR UNIT/HEATER).

SANITIZING EQUIPMENT SCHEDULE									
TAG	COUNT	DESCRIPTION	FURNISHED BY	INSTALLED BY	BASIS FOR DESIGN		REMARKS		
					MANUFACTURER	MODEL			
SB-1	2	BATHROOM AIR PURIFICATION UNIT	TUV	GC	RGF ENVIRONMENTAL GROUP	BRU ASSEMBLY	SEE ELECTRICAL SHEETS FOR CONNECTION INFORMATION		
SH-1	2	HVAC AIR PURIFICATION UNIT	TUV	GC	RGF ENVIRONMENTAL GROUP	REME-HALO	SEE DETAIL 6/M700 FOR INSTALLATION INFORMATION.		
SI-1	2	ICE MACHINE TREATMENT SYSTEM	TUV	GC	RGF ENVIRONMENTAL GROUP	IMS-B-GA	SEE PLUMBING DRAWINGS FOR INSTALLATION INFORMATION.		

FAN SCHEDULE											
TAG	DESCRIPTION	AIRFLOW	E.S.P.	WEIGHT	ELECTRICAL		FURNISHED BY	INSTALLED BY	BASIS FOR DESIGN		REMARKS
					MOTOR POWER	V/P/H			MANUFACTURER	MODEL	
EF-1	UPBLAST UTILITY SET EXHAUST FAN	1,900 CFM	2.20 in-wg	296 lb	2.13 hp	208/3/60	HS	GC	CAPTIVE-AIRE	USB120DD-RM	DIRECT DRIVE UPBLAST EXHAUST FAN FURNISHED WITH WEATHERPROOF DISCONNECT
EF-2	INLINE EXHAUST FAN	150 CFM	0.50 in-wg	11 lb	0.17 hp	115/1/60	HS	GC	CAPTIVE-AIRE	DFA 200CA	INLINE, STRAIGHT THROUGH DISCHARGE RESTROOM EXHAUST FAN WITH CEILING VIBRATION HANGERS AND INTEGRAL SPEED CONTROL.
EF-3	INLINE EXHAUST FAN	100 CFM	0.50 in-wg	8 lb 1900 CFM	0.15 hp	115/1/60	HS	GC	CAPTIVE-AIRE	DFA 100CA	INLINE, STRAIGHT THROUGH DISCHARGE RESTROOM EXHAUST FAN WITH CEILING VIBRATION HANGERS AND INTEGRAL SPEED CONTROL. INTERLOCK WITH HP-2-I OPERATION.

ELECTRIC DUCT HEATER SCHEDULE								
TAG	MANUFACTURER	MODEL	SERVICE	AIR FLOW (CFM)	TEMP. RISE (DEGREES F.)	ELECTRICAL DATA		NOTES
						WATTS OR AMPS	VOLTS/PH.	
DH-1	TUTCO	E-SERIES DH	OUTSIDE AIR	1100	23	8 kW	208V/3PH	WITH SCR CONTROL AND CONTROL TRANSFORMER, DISCONNECT SWITCH, AND ADJUSTABLE AIRFLOW SWITCH, CONTROLLED BY DUCT MOUNTED TEMPERATURE SENSOR (UPSTREAM OF DUCT HEATER) TO ENGAGE WHEN OUTSIDE AIR IS 35 DEGREES OR LESS.
DH-2	TUTCO	E-SERIES DH	OUTSIDE AIR	1100	23	8 kW	208V/3PH	WITH SCR CONTROL AND CONTROL TRANSFORMER, DISCONNECT SWITCH, AND ADJUSTABLE AIRFLOW SWITCH, CONTROLLED BY DUCT MOUNTED TEMPERATURE SENSOR (UPSTREAM OF DUCT HEATER) TO ENGAGE WHEN OUTSIDE AIR IS 35 DEGREES OR LESS.

AIR TERMINAL SCHEDULE												
TAG	DESCRIPTION	FACE SIZE	MATERIAL	FINISH	MOUNTING	FURNISHED BY	INSTALLED BY	BASIS FOR DESIGN		NOTES		
								MANUFACTURER	MODEL			
CD1	PERFORATED CEILING DIFFUSER	24" X 24"	ALUMINIUM	WHITE	LAY-IN CEILING	GC	GC	NAILOR	4320A TYPE L	PROVIDE WITH INTEGRAL OBD		
CD2	PERFORATED CEILING DIFFUSER	24" X 12"	ALUMINIUM	WHITE	LAY-IN CEILING	GC	GC	NAILOR	4320A TYPE L	PROVIDE WITH INTEGRAL OBD, REMOVE 4-WAY DEFLECTORS		
ER1	PERFORATED CEILING EXHAUST	12" X 12"	ALUMINIUM	WHITE	SURFACE MOUNT	GC	GC	NAILOR	4330R TYPE S	PROVIDE INTEGRAL OBD		
RG2	PERFORATED CEILING RETURN	48" X 24"	ALUMINIUM	WHITE	SURFACE MOUNT	GC	GC	NAILOR	4330R TYPE S			
SR1	ADJUSTABLE TURBO NOZZLE	SEE NECK SIZE	ALUMINIUM	WHITE	WALL	GC	GC	AIR CONCEPTS	ANR-14	PROVIDE WITH CONCEALED MOUNTING AND FACE-ACCESSIBLE OBD		
SR2	DOUBLE DEFLECTION SUPPLY REGISTER	SEE NECK SIZE	ALUMINIUM	WHITE	WALL	GC	GC	NAILOR	51DH	PROVIDE WITH INTEGRAL OBD		
T1	PERFORATED CEILING TRANSFER GRILLE	24" X 24"	ALUMINIUM	WHITE	LAY-IN CEILING	GC	GC	NAILOR	4320A TYPE L			

KITCHEN HOOD SCHEDULE														
TAG	DESCRIPTION	MANUFACTURER	MODEL	MAX COOKING TEMP	EXHAUST PLENUM				# OF LIGHT FIXTURES	WEIGHT	NOTES			
					AIRFLOW	E.S.P.	WIDTH	LENGTH						
HD-1	TYPE 1 CANOPY HOOD WITH PERFORATED MAJ AND HVAC SUPPLY PLENUMS	CAPTIVEAIRE	5424 ND-2	600 DEG. F.	1,900 CFM	0.818" WC	4'-6"	10'-4"	1	10"	18"	6	1,070 LBS	1-11

NOTES:

- 18 GAUGE TYPE 430 STAINLESS STEEL CONSTRUCTION.
- FURNISHED WITH VAPORPROOF INCANDESCENT LIGHT FIXTURES.
- 16" TALL HE SS FILTERS.
- INTEGRAL UTILITY CABINET.
- ANSUL SYSTEM.
- DUCT COLLAR TEMPERATURE SENSOR.
- PREWIRE PACKAGE.
- SPARE FIRE SYSTEM DRY CONTACT.
- 4-POLE 20A CONTACTOR.
- DVC-1 KITCHEN FAN CONTROL CENTER TO ENGAGE ASSOCIATED MAKE-UP AIR UNIT AND EXHAUST FAN AND CONTROL LIGHTS.
- UL LISTED FIRE SUPPRESSION AND GREASE COLLECTION SYSTEM.

NO.	REVISION	DATE	CHKD
5			
4	REVISION 4	04/16/25	
3	CONSTRUCTION SET	04/09/25	
2	UPDATED PERMIT SET	03/20/25	
1	BULLETIN 1	11/05/24	
0	PERMIT SET	10/17/24	

Bowman

PROJ.: 20045
DATE: 09/30/2024
DRAWN BY: J. SHOUP
CHECKED BY: J. SHOUP
SCALE: AS SHOWN
THIS DRAWING IS UNCONTROLLED UNLESS IT IS IDENTIFIED BY THE DATE AND VERSION NUMBER. REVISED DRAWINGS ARE NOT TO BE USED UNLESS THEY ARE IDENTIFIED BY THE DATE AND VERSION NUMBER. ALL RIGHTS RESERVED.

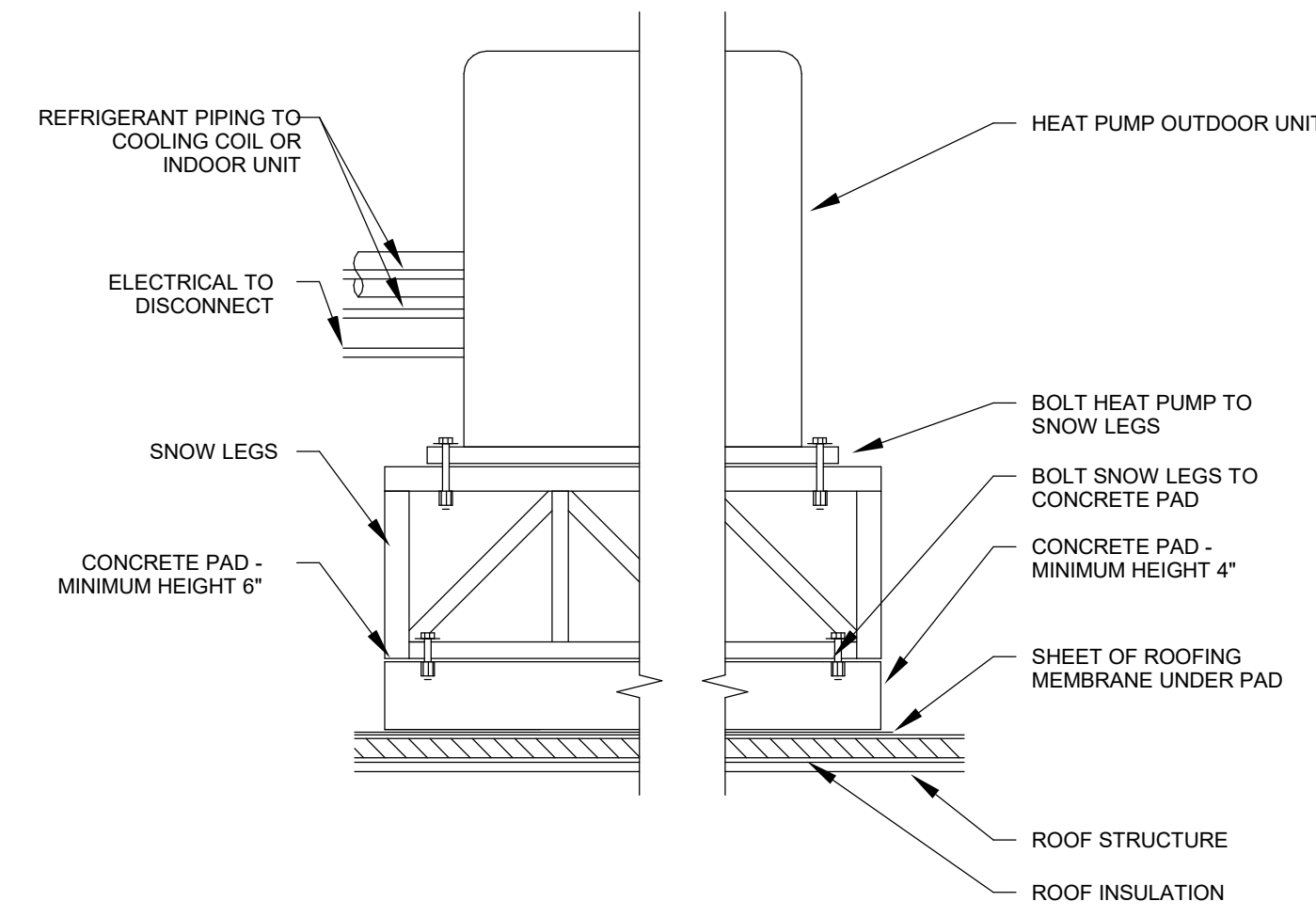
DOS ID: 2840131
Phone: 973-359-9400
www.bowmanconsulting.com
E-mail: N.Y.@BowmanConsulting.com

Bowman Consulting Engineering, Land Surveying & Landscape Architecture
54 Hazelwood Road, Suite 100
Brooklyn, NY 11225
www.bowmanconsulting.com

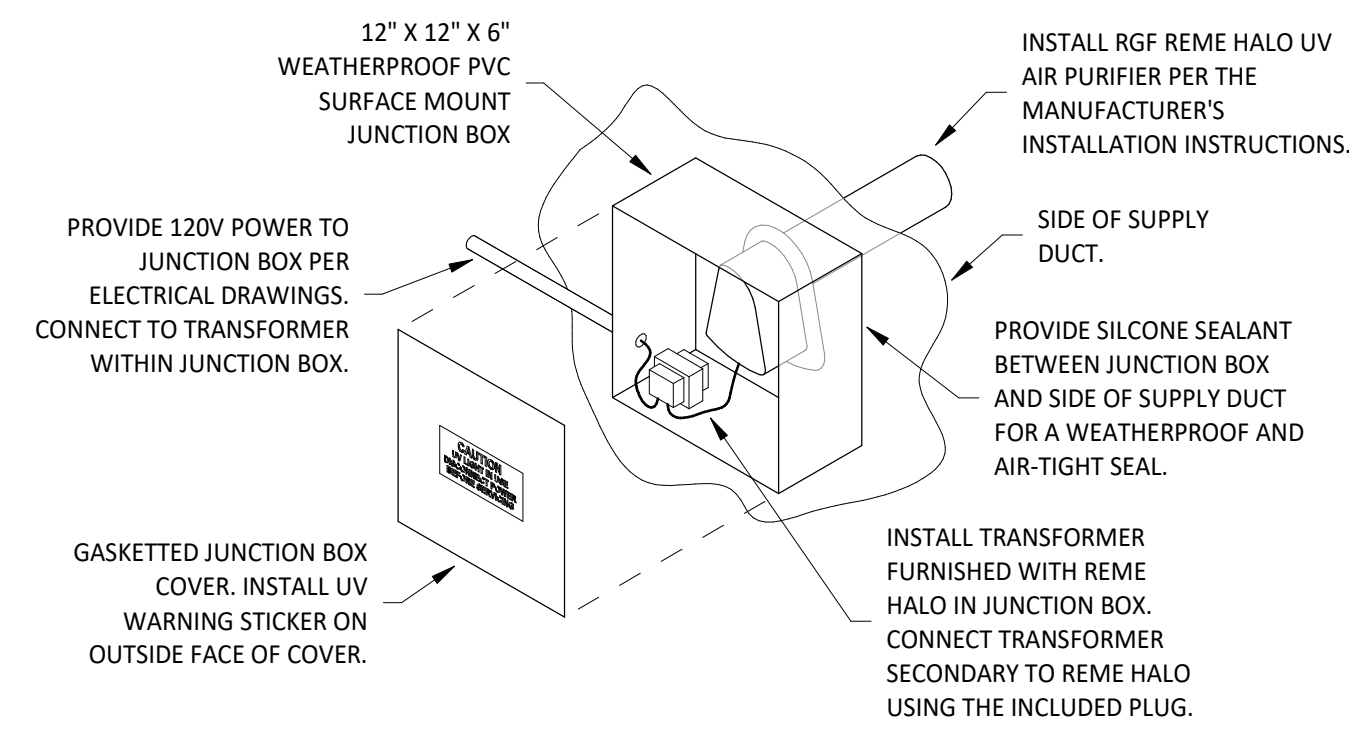
Walter Shoup, N.Y. Professional Engineer, Lic. 110146

CHIPOTLE MEXICAN GRILL, INC.
1730 BEDFORD AVE.
BROOKLYN, NY 11225

SHEET 3 OF 4
SHEET TITLE:
M-600.00
HVAC SCHEDULES
DOB NOW Job# B01156614-51

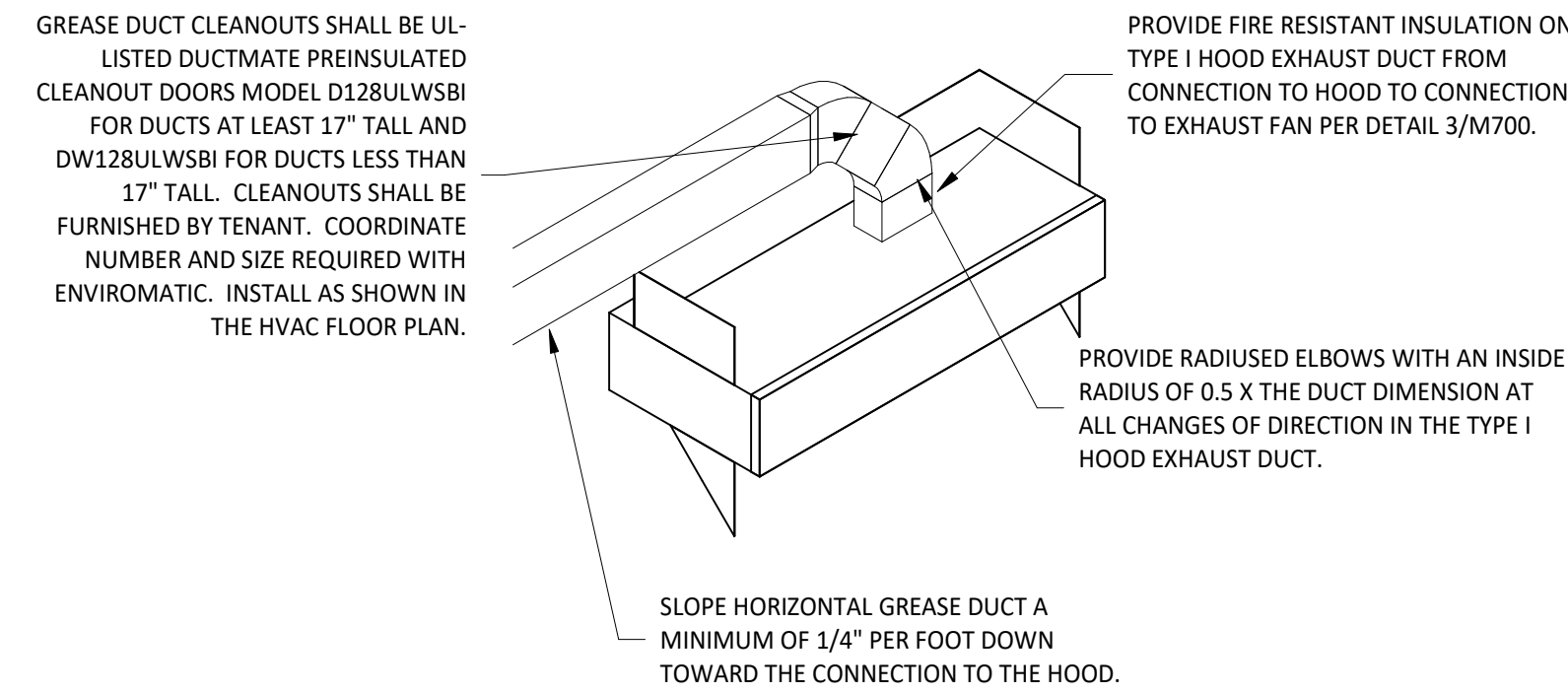


10
M-700.00
HEAT PUMP OUTDOOR UNIT DETAIL
NOT TO SCALE

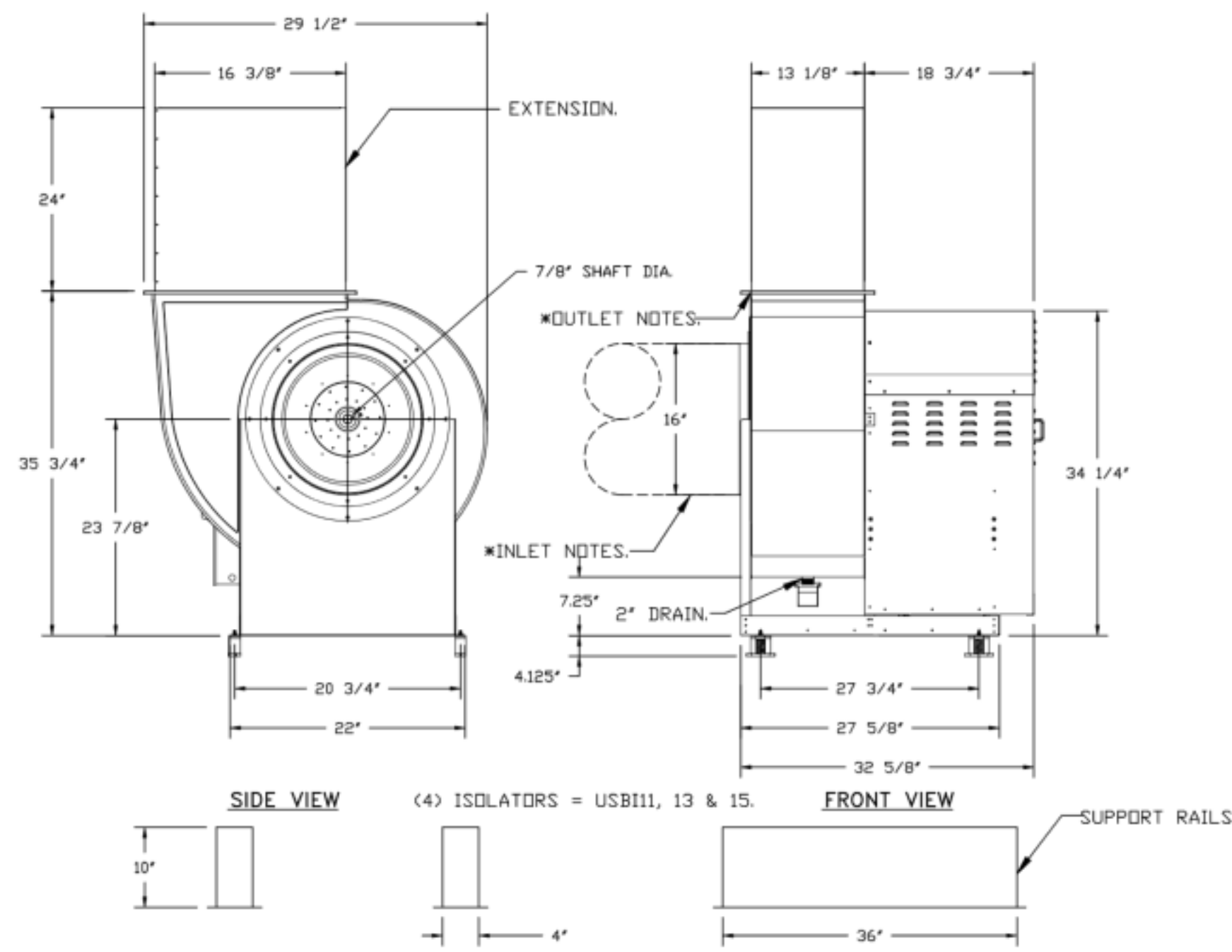


INSTALLATION LOCATION
INSTALL AIR PURIFIER WITH JUNCTION BOX ON OUTSIDE FACE OF ROOFTOP UNIT AND WITH UV LAMP TUBE EXTENDING INTO THE INTERIOR OF THE ROOFTOP UNIT. FIELD VERIFY EXACT LOCATION TO AVOID DAMAGING, TOUCHING, OR INTERFERING WITH ANY RTU INTERIOR COMPONENTS. INSTALLATION LOCATION SHALL BE AS FOLLOWS:
FRANE: INSTALL INTO THE SUPPLY AIR STREAM THROUGH THE REMOVABLE PANEL COVERING THE HORIZONTAL DISCHARGE SUPPLY AIR OPENING.
YORK: INSTALL INTO THE SUPPLY AIR PLENUM FROM THE BACK SIDE OF THE UNIT JUST ABOVE THE HEAT EXCHANGER.

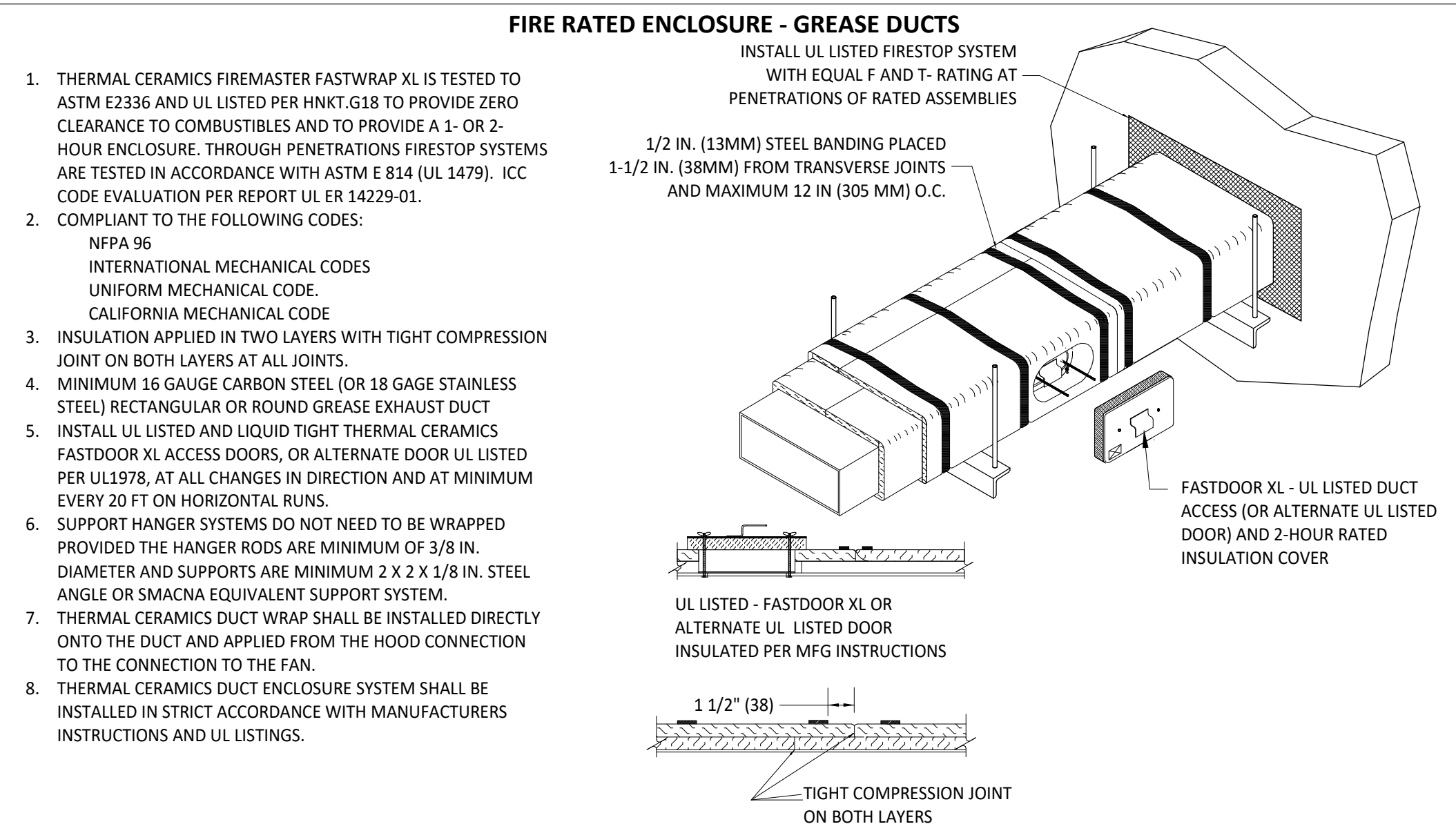
6
M-700.00
UV AIR PURIFIER INSTALLATION
NOT TO SCALE



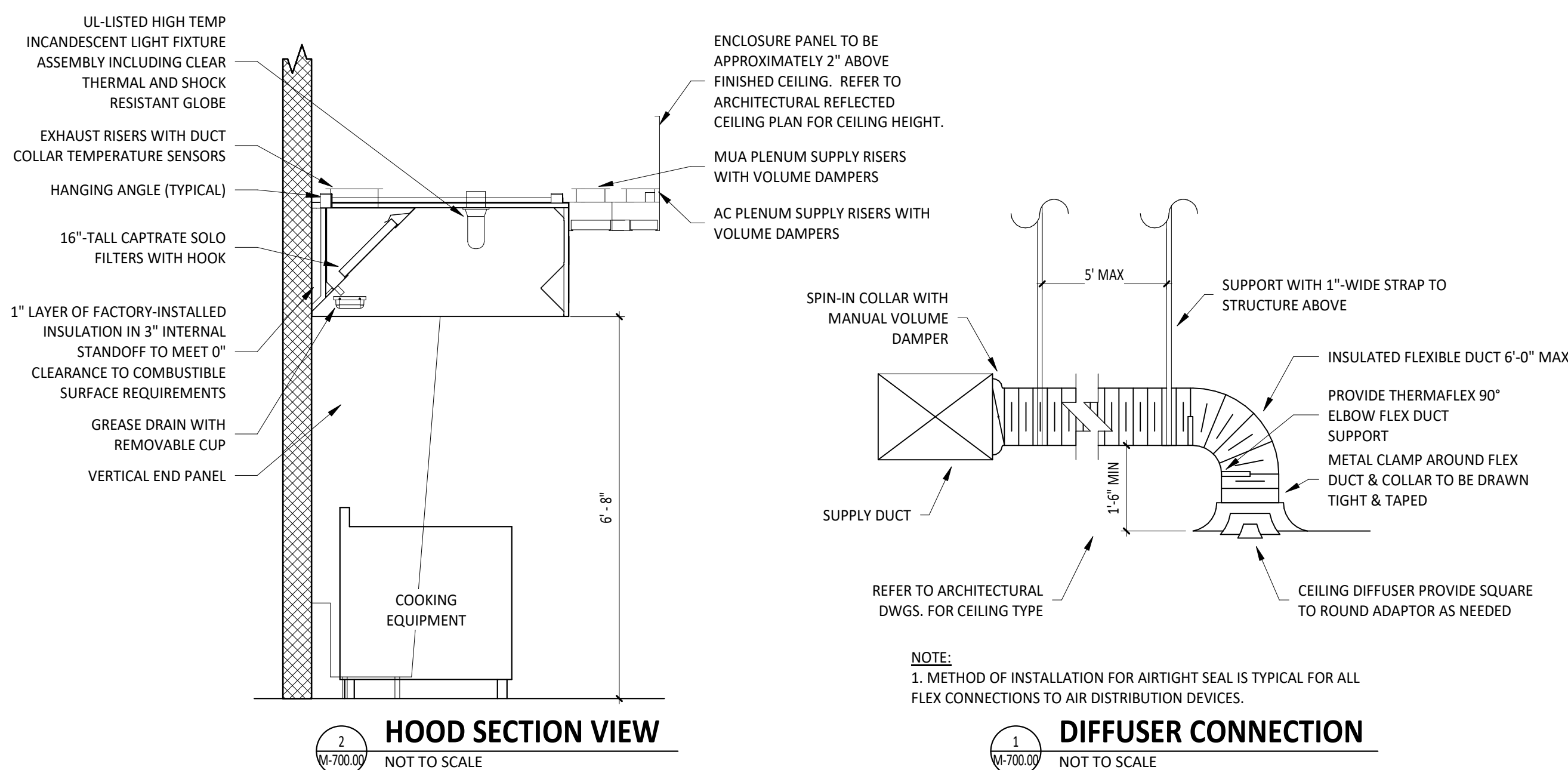
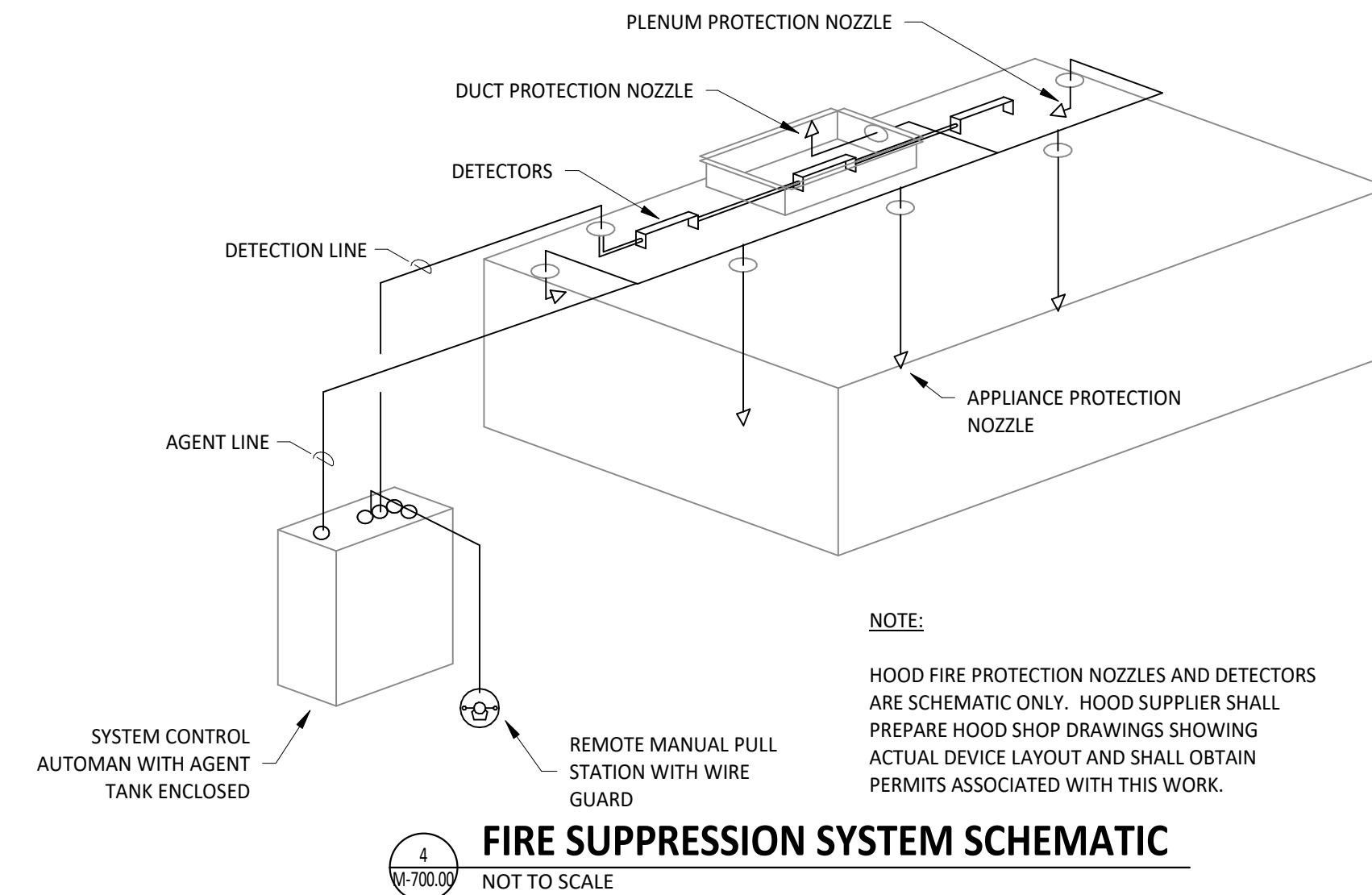
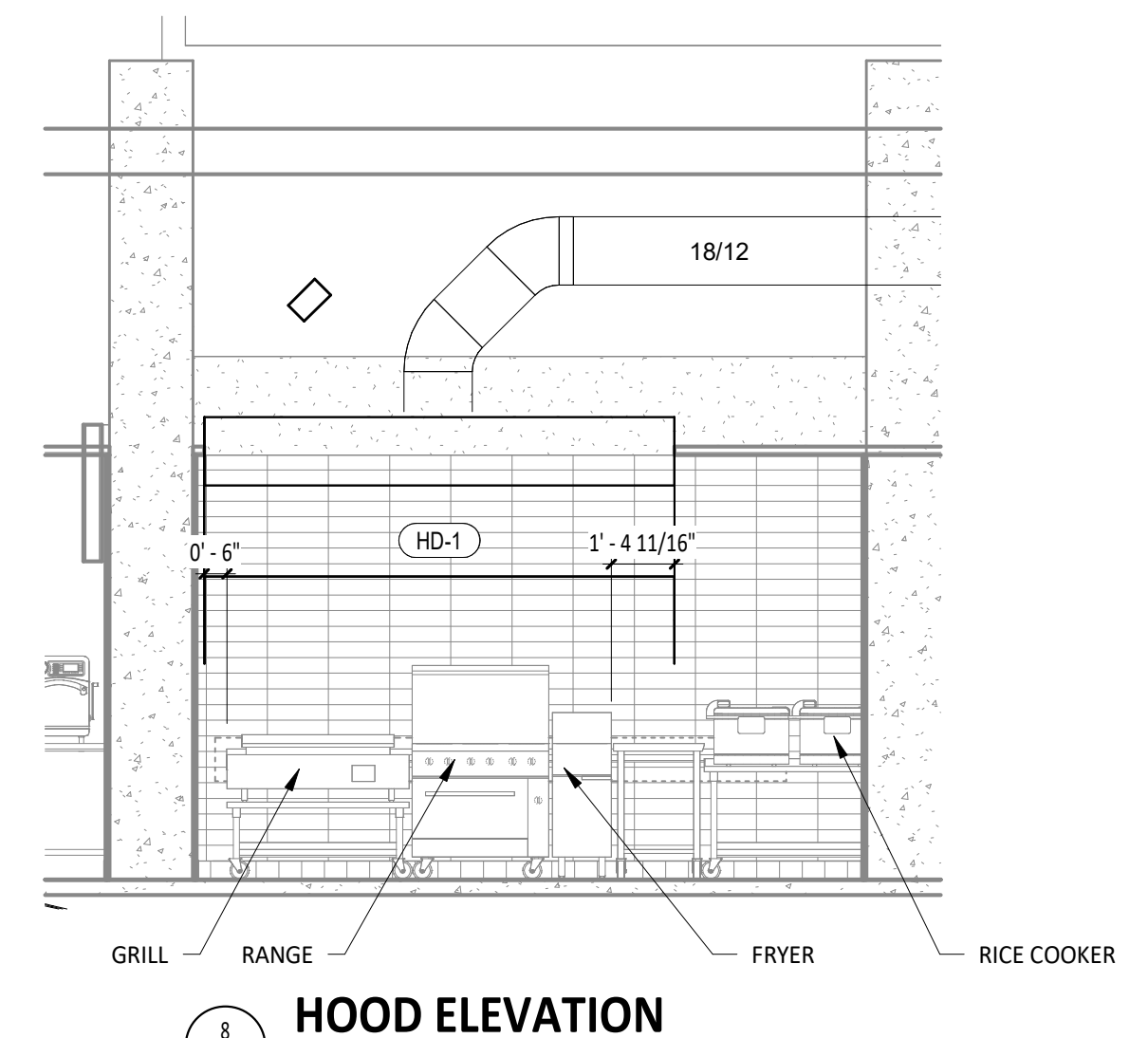
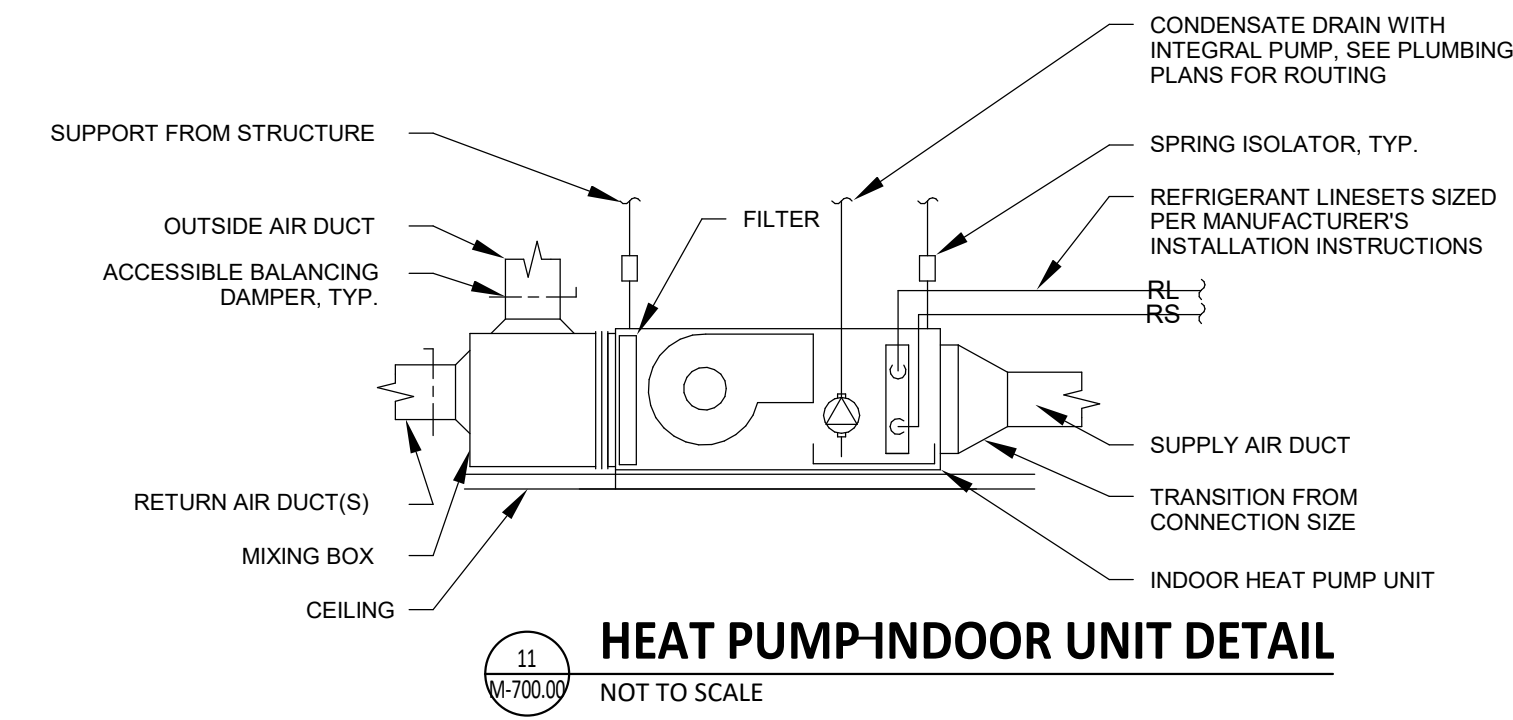
9
M-700.00
HOOD EXHAUST ISOMETRIC
NOT TO SCALE



5
M-700.00
GREASE EXHAUST FAN
NOT TO SCALE



3
M-700.00
FIREMASTER DUCT WRAP - UL HNKT-G18
NOT TO SCALE



NO.	DATE	REVISION
5		
4	04/09/25	3 CONSTRUCTION SET
3	03/20/25	2 UPDATED PERMIT SET
2	11/05/24	1 BULLETIN 1
1	10/17/24	0 PERMIT SET

PROJ.: 230435
DATE: 09/30/2024
DWG NO: M-700.00
THIS DRAWING IS AN UNCONTROLLED COPY. THE ONLY CONTROLLED COPY IS THE ORIGINAL DRAWING FILED IN THE PROJECT FOLDER. ANY CHANGES TO THIS DRAWING SHALL BE MADE TO THE ORIGINAL FILED COPY. ANY CHANGES TO THIS DRAWING SHALL BE MADE TO THE ORIGINAL FILED COPY. ANY CHANGES TO THIS DRAWING SHALL BE MADE TO THE ORIGINAL FILED COPY.
© 2024 BOWMAN CONSULTING, LLC. ALL RIGHTS RESERVED.

Bowman

WARNING: IT IS A VIOLATION OF ANY FEDERAL, STATE, OR LOCAL LAW, OR ANY PROFESSIONAL ENGINEERING, LAND SURVEYING, OR LANDSCAPE ARCHITECTURE ACT TO REPRODUCE, COPY, OR ALTER THIS DRAWING IN ANY MANNER WITHOUT THE WRITTEN PERMISSION OF BOWMAN CONSULTING, LLC.

Bowman Consulting Engineering, Land Surveying & Landscape Architecture
54 Henshall Road, Suite 100
Brooklyn, NY 11225
Phone: 973-559-9400
Fax: 973-559-9401
www.bowmanconsulting.com
E-mail: NJ@BowmanConsulting.com

Walter Shoup, N.Y. Professional Engineer, Lic. 110146

CHIPOTLE MEXICAN GRILL, INC.
1730 BEDFORD AVE.
BROOKLYN, NY 11225

SHEET 4 OF 4
SHEET TITLE:

M-700.00

HVAC DETAILS

DOB NOW Job# B01156614-S1