

Report By:

National TAB
1329 E. KEMPER ROAD
SUITE 4210
CINCINNATI, OH 45246

NATIONAL

TAB

Comfort. Under control.

Report: ISSUES

Function: Test, Adjust, & Balance

Date: 03/30/2023

PROJECT

Project Eagle (Liberty, MO)

1551 SHEPHERD RD

LIBERTY, MO 64083

Client

Metro Air Conditioning

8151 McCoy

Shawnee, KS 66227

National TAB

Project: Project Eagle (Liberty, MO)

Table Of Contents

Section	Page #
Issue Data	3



Comfort. Under control.

Project Eagle (Liberty, MO)

Project Issue Information

Issue Name : CEF1-1/1-2/1-3 overperforming

Description : The edges of the ceiling fan CEF1-1, CEF1-2, and CEF1-3 are not sealed and the fan is pulling from outside the restroom and over performing as a result. All fans speed taps are set to lowest setting.

Created By : National TAB

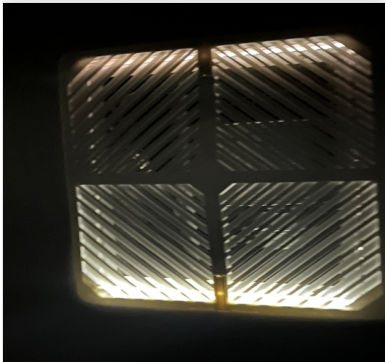
Assigned To : National TAB - Jacob Davidson

Status : Open

Originated Date : 03/20/2023 - Jacob Davidson - National TAB

Project Issue Response Details

- **03/29/2023** National TAB - Jacob Davidson
 - The space around the ceiling fans has been sealed, however the units are still overperforming at the lowest speed possible on the dial. A smaller fan would be needed to decrease any further.
- **03/20/2023** National TAB - Jacob Davidson
 - Added pics of other fans with light bleeding through.



Gaps1-3.jpeg



GapCEF1-2.jpeg



Gap1-2R.jpeg



Comfort. Under control.

Project Eagle (Liberty, MO)

Project Issue Information

Issue Name : EF1-6 not turning on with HMI modules on MAU

Description : EF1-6 are meant to interlock with MAU1-6 but when the supply fan runs, the exhaust fan doesn't on any unit. They also don't run when just selecting exhaust only. The only other way to turn them on is to manually do it at each terminal around the warehouse.

Created By : National TAB **Assigned To :** National TAB - Jacob Davidson

Status : Open

Originated Date : 03/30/2023 - Jacob Davidson - National TAB

Project Issue Response Details

- **03/30/2023 National TAB - Jacob Davidson**
 - Adding pics. When running all fans the supply will run but exhaust will not.



Fannotmoving.jpeg



Fansallon.jpeg



Supplyrunning.jpeg



Comfort. Under control.

Project Eagle (Liberty, MO)

Project Issue Information

Issue Name : MAU1-6 Motorized damper won't open on start up

Description : Motorized damper is meant to open when fans start. The damper makes noise like it wants to move but won't on each unit. Each damper needs to be looked at and made sure they open when the fan comes on.

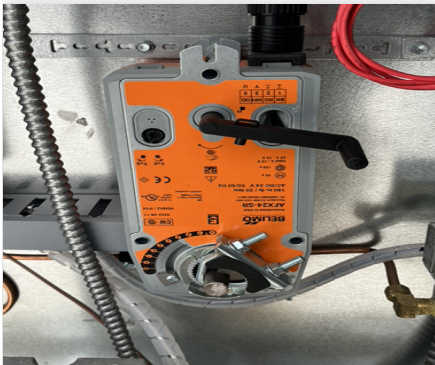
Created By : National TAB

Assigned To : National TAB - Jacob Davidson

Status : Open

Originated Date : 03/30/2023 - Jacob Davidson - National TAB

Project Issue File Details



Motorizeddamper.jpeg



Damperclosed.jpeg



Comfort. Under control.

Project Eagle (Liberty, MO)

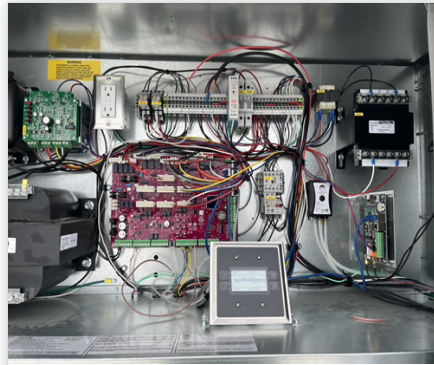
Project Issue Information

Issue Name : MAU4 electrical buzzing coming from electric panel
Description : Panel on the MAU has a electric buzzing noise that the other units does not have that may become an issue later on.
Created By : National TAB **Assigned To :** National TAB - Jacob Davidson
Status : Open
Originated Date : 03/30/2023 - Jacob Davidson - National TAB

Project Issue File Details



MAU4.jpeg



Panellocation.jpeg



Comfort. Under control.

Project Eagle (Liberty, MO)

Project Issue Information

Issue Name : RTU3 MAJOR LEAKAGE OUT DISCHARGE

Description : RTU3 is only hitting 3726 CFM of the designed 4500. Tech tried to turn in the pulley to increase speed, but the motor overamped each time. The motor is 5 turns out but cannot be turned in anymore or else the motor overamps from its 4.6 FLA. Fan direction is also confirmed to be correct.

Created By : National TAB

Assigned To : National TAB - Jacob Davidson

Status : Open

Originated Date : 03/30/2023 - Jacob Davidson - National TAB

Project Issue File Details



Amps.jpeg



Motorlabel.jpeg

Project Issue Response Details

- **03/30/2023 National TAB - Jacob Davidson**

- Discovered that the unit is off the curb and leaking air out of the discharge compartment. Unit needs to be set right in order for unit to reach design speed.



Dishcharge.jpeg



Curb.jpeg

- **03/30/2023** **National TAB - Jacob Davidson**

- Assigned to wrong person
-