

Report By:

National TAB
1329 E. KEMPER ROAD
SUITE 4210
CINCINNATI, OH 45246



Report: TAB Report
Function: Test, Adjust, & Balance
Date: 07/22/2025
Completed By: National TAB

PROJECT
Citrus Cardiology (Crystal River, FL)

2797 West Gulf to Lake Highway

Lecanto, FL 34461

Client

Shaw Mechanical Services
350 State Road 434 West
Longwood, FL 32750

National TAB

Project: Citrus Cardiology (Crystal River, FL)

Table Of Contents

Section	Page #
Certification	3
Equipment Calibrations	4
Abbreviations	5
Remarks	6
GRD Layout	17
AHU/RTU	19
Fan Coil	22
FAN - Exhaust	57



CERTIFICATION

PROJECT: Citrus Cardiology (Crystal River, FL)

The data presented in this report is a record of system measurements and final adjustments that have been obtained in accordance with the current edition of the NEBB *Procedural Standards for Testing, Adjusting, and Balancing of Environmental Systems*. Any variances from design quantities, which exceed NEBB tolerances, are noted in the Test-Adjust-Balance Report Project Summary.

The air distribution system has been tested and balanced and final adjustments have been made in accordance with NEBB standards and the project specifications.

NEBB TAB FIRM: National TAB-Southeast

REGISTRATION NO: 3755

CERTIFIED BY: J. Scott Springer 23312

DATE: 7/25/2025

The hydronic distribution system has been tested and balanced and final adjustments have been made in accordance with NEBB standards and the project specifications.

NEBB TAB FIRM: National TAB-Southeast

REGISTRATION NO: 3755

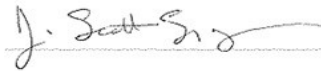
CERTIFIED BY: J. Scott Springer 23312

DATE: _____

Submitted and Certified by:

NEBB TAB FIRM: National TAB-Southeast

TAB PROFESSIONAL: J. Scott Springer

SIGNATURE: 

REGISTRATION NO: 3755 (NTAB) / 23312

CERTIFICATION EXP: 12/31/2025





National TAB

Testing, Adjusting, and Balancing Equipment



Function		Range	Minimum Accuracy	Instrument Information	Calibration Date	Date Due
AIR	AIR PRESSURE	0 in wg to 10 in wg	2% +/- 0.001 in wg	Shortridge ADM-880C S/N M05066	10/15/2024	10/15/2025
	AIR VELOCITY INSTRUMENT	50 fpm to 3900 fpm	+/- 5 % +/- 7 fpm	Shortridge ADM-880C S/N M05066	10/15/2024	10/15/2025
	DIRECT HOOD READING	100 cfm to 2000 cfm	+/- 3 % +/- 7 cfm	Shortridge Flow Hood	10/15/2024	10/15/2025
TEMPERATURE	AIR METER	-20 F to 240 F	+/- .5 % 2 F	Cooper ATKINS - SRH77A S/N 081820093	10/15/2024	10/15/2025
	AIR PROBE	-20 F to 240 F	+/- .5 % 2 F	Cooper ATKINS - PD1388 7-6 S/N 5028	10/15/2024	10/15/2025
	IMMERSION METER	-20 F to 240 F	+/- .5 % 2 F	Cooper ATKINS - SRH77A S/N 081820093	10/15/2024	10/15/2025
	IMMERSION PROBE	-20 F to 240 F	+/- .5 % 2 F	Cooper ATKINS - PD1388 7-6 S/N 1075	10/15/2024	10/15/2025
	CONTACT METER	-20 F to 240 F	+/- .5 % 2 F	Cooper ATKINS - SRH77A S/N 081820093	10/15/2024	10/15/2025
	CONTACT PROBE	-20 F to 240 F	+/- .5 % 2 F	Cooper ATKINS - PD1388 7-6 S/N 4011	10/15/2024	10/15/2025
HUMIDITY	HUMIDITY PROBE	10 % RH to 90 % RH	3% of reading	Cooper ATKINS - SRH77A S/N 090315046	10/15/2024	10/15/2025
ELECTRICAL	VOLTAGE MEASUREMENT	0 VAC to 600 VAC	2 % reading +/- 5 digits	Dwyer CM-1 - S/N 190800099	10/15/2024	10/15/2025
	AMPERAGE MEASUREMENT	0 Amperers to 100 Amperes	2 % reading +/- 5 digits	Dwyer CM-1 - S/N 190800099	10/15/2024	10/15/2025
ROTATION	ROTATION MEASUREMENT	60 rpm to 5000 rpm	2 % reading 2 rpm	Dwyer TAC-L - S/N S1100123	10/15/2024	10/15/2025
HYDRONIC	PRESSURE MEASUREMENT	-30 in Hg to 200 psi	±2% of reading +/- 1 psi	Shortridge HDM 250 - S/N W25059	6/18/2025	6/18/2026
	DIFFERENTIAL PRESSURE MEASUREMENT	0 psi - 80 psi	±2% of reading +/- 1 psi	Shortridge HDM 250 - S/N W25059	6/18/2025	6/18/2026
DALT	DUCT LEAKAGE	-10" - +10" wc	±1% of reading +/- 0.004" wc	Kanomax DALT 6900 S/N: 080439	3/7/2025	3/7/2026

Abbreviation List

A = Area (ft ²)	S.F. = Service Factor
AHU = Air Handling Unit	SF = Supply Fan
A _k = Effective Area	SP = Static Pressure
BHP = Brake Horsepower (IP) HP	SR = Supply Register
Btu = British Thermal Unit	T = Temperature
Btu/h = Btuh = BTUH = BTU/Hour	T _{ma} = Mixed Air Temperature
CL = Center Distance (used in belt formula)	T _{oa} = Outside Air Temperature
CD = Ceiling Diffuser	T _{ra} = Return Air Temperature
CF = Correction Factor	H = Head (in wc, ft wc, psi)
CFM = Volumetric Flow: Cubic Feet Per Minute	h = Enthalpy
CO ₂ = Carbon Dioxide	HP = Horsepower
CO = Carbon Monoxide	hr = Hour
C _v = Flow Constant	K _v = Flow constant (SI)
d = Diameter (in.) IP	kW = Kilowatt = 1000 Watts
Δ = Difference or Change (Final - Initial)	LAT = Leaving Air Temperature
DB = Dry Bulb	lb = Pounds
EA = Exhaust Air	LWT = Leaving Water Temperature
EAT = Entering Air Temperature	ma = Mixed Air
EF = Exhaust Fan	MIN = Minimum
Eff = Efficiency	MAX = Maximum
EG = Exhaust Grille	N/A = Not Applicable
ESP = External Static Pressure	NA = No Access
EWT = Entering Water Temperature	NL = Not Listed
°F = Degrees Fahrenheit, °F	NPSHA = Net Positive Suction Head Available
FPB = Fan Powered Box	NS = Not Specified
FLA = Full Load Amps	OA = Outside Air
fpm = Feet per Minute (fpm)	OAT = Outside Air Temperature
ft = Foot	PD = Sheave Pitch Diameter
gal = Gallons	P.D. = Pressure Drop
GPM = Gallons Per Minute (GPM)	PF = Power Factor
h = Enthalpy (BTU/lb dry air)	SG = Supply Grille
P = Pressure	SR = Supply Register
ppm = parts per million	TP = Total Pressure
psi = Pounds Per Square Inch	T _{ra} = Return Air Temperature
psid = PSI Differential	TS = Tip Speed (fpm) IP, (m/s) SI
r = Radius (in)	TSP = Total Static Pressure
% _{ra} = % of Return Air	V = Velocity
RA = Return Air	VAV = Variable Air Volume
RAT = Return Air Temperature	VD = Volume Damper
RF = Return Fan	VFD = Variable Frequency Drive
RG = Return Grille	W = Watt
RH = Relative Humidity	WB = Wet Bulb
RPM = Revolutions Per Minute	wg = wc = water gauge = water column
RTU = Roof Top Unit	WHP = Water Horsepower (IP)
SA = Supply Air	ω = Humidity Ratio

Issue List

- Damper Accessibility Room 103
- EF 4.4 Not Running
- FCU-11 Outside Air
- FCU-12 Return Issues
- FCU-9 Low Diffusers
- INFO: Daikin Fan Speed Controls
- Motorized OA Dampers Not Powered
- RTU-1 Returns
- SGRD12-5 Duct Undersized



Citrus Cardiology (Crystal River, FL)

Project Issue Information

Issue Name : Damper Accessibility Room 103
Description : There are two supply ducts for FCU-11 located above Room 103 that do not appear to be accessible now that the ceiling grid is installed. The damper handles do not appear to be fully horizontal, suggesting they are not tightened down. These may move over time so we will need to figure out how to access them.

Created By : National TAB **Assigned To :** National TAB - Stephen Tassinaro

Status : Closed
Priority : Urgent **Asset Tag :**
Originated Date : 06/11/2025 - Stephen Tassinaro - National TAB

Project Issue File Details



06/12/2025



06/12/2025

Project Issue Response Details

- **08/27/2025 National TAB - Stephen Tassinaro**
 - Closing this issue as there are no comfort issues in this area and the damper is now more difficult to access with the staff moved into the building.
- **07/08/2025 National TAB - Stephen Tassinaro**
 - After balancing, one of the diffusers remained at 75% of proportional design due to this limited access.



Citrus Cardiology (Crystal River, FL)

Project Issue Information

Issue Name : EF 4.4 Not Running
Description : EFs 4.4 is not operational. EF 4.4 will not run despite the restroom lights being on. The fan was found to not be wired.
Created By : National TAB **Assigned To :** National TAB - Stephen Tassinaro
Status : Closed
Priority : **Urgent** **Asset Tag :**
Originated Date : 06/13/2025 - Mark Johnson - National TAB

Project Issue File Details



06/13/2025



07/21/2025

Project Issue Response Details

- **08/27/2025 National TAB - Stephen Tassinaro**
 - FAN NOW RUNNING & BALANCED



Citrus Cardiology (Crystal River, FL)

Project Issue Information

Issue Name : FCU-11 Outside Air
Description : Outside air damper cannot be manually adjusted, nor does it have limit stoppers. Once damper is functional, outside air can be read out but not adjusted. A manual damper will need to be added.
Created By : National TAB **Assigned To :** National TAB - Stephen Tassinaro
Status : Closed
Priority : Urgent **Asset Tag :**
Originated Date : 07/21/2025 - Stephen Tassinaro - National TAB

Project Issue File Details



07/21/2025

Project Issue Response Details

- **08/27/2025 National TAB - Stephen Tassinaro**
 - Manual damper installed & adjusted.

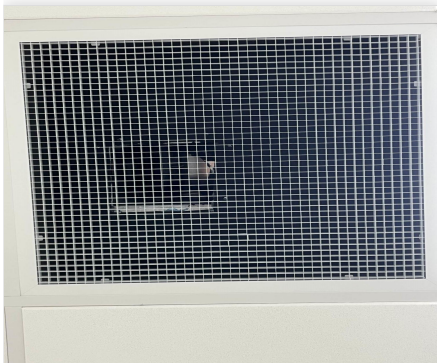


Citrus Cardiology (Crystal River, FL)

Project Issue Information

Issue Name : FCU-12 Return Issues
Description : FCU-12 has too small of a duct for EGRD-6. The 6x6 duct cannot be balanced to 550CFM and the return system is not fully balanced as result. The EGRD-3 damper does not have full range of motion and cannot be set to design.
Created By : National TAB **Assigned To :** National TAB - Stephen Tassinaro
Status : Closed
Priority : Urgent **Asset Tag :**
Originated Date : 07/22/2025 - Stephen Tassinaro - National TAB

Project Issue File Details



07/22/2025



07/22/2025



07/22/2025

Project Issue Response Details

- **08/27/2025** **National TAB - Stephen Tassinaro**
 - CORRECT SIZE DUCTS INSTALLED. RETURNS REBALANCED TO PROPORTIONAL DESIGN.



Citrus Cardiology (Crystal River, FL)

Project Issue Information

Issue Name : FCU-9 Low Diffusers
Description : FCU-9 has two low diffusers. The taps are installed directly after a quick turn in the ductwork that appears to be disrupting the airflow.
Created By : National TAB **Assigned To :** National TAB - Stephen Tassinaro
Status : Closed
Priority : Urgent **Asset Tag :**
Originated Date : 07/08/2025 - Stephen Tassinaro - National TAB

Project Issue File Details

DIFFUSER	DESIGN	ACTUAL	PERCENT DESIGN	COMMENTS
1	175	112	0.64	Full Open, Tap installed immediately after turn in duct.
2	175	145	0.828571429	Full Open, Tap installed immediately after turn in duct.
3	175	160	0.914285714	
4	175	177	1.011428571	
5	25	26	1.04	
c	0c	07	1.007000000	

07/08/2025



Project Issue Response Details

- **08/27/2025 National TAB - Stephen Tassinaro**
 - FCU 9 IS NOW BEING SPLIT INTO 2 SEPERATE UNITS SO THAT ONE OF THE ROOMS CAN BE CONTROLLED DOWN TO 60F (REQUIREMENT FOR THE MACHINERY IN THIS ROOM). FCU 9 NOW HAS 5 DIFFUSERS WHICH HAVE BEEN BALANCED TO ORIGINAL DESIGN.



Citrus Cardiology (Crystal River, FL)

Project Issue Information

Issue Name : INFO: Daikin Fan Speed Controls
Description : The FCU fan speeds are set on the Daikin thermostats, however only 3 speeds are made available. Low, Medium, and High. For several units none of these options were within design, so the diffusers have been balanced proportionally to the closest fan speed to design.
Created By : National TAB **Assigned To :** National TAB - Stephen Tassinaro
Status : Open
Priority : InfoOnly **Asset Tag :**
Originated Date : 06/12/2025 - Stephen Tassinaro - National TAB



Citrus Cardiology (Crystal River, FL)

Project Issue Information

Issue Name : Motorized OA Dampers Not Powered
Description : The motorized OA dampers are not functional. This damper type does not have a clutch button to adjust them prior to being powered, so the U-bolts will need to be loosed and shaft positions set. The only FCU with a manual damper to set outside air is FCU-10. All others will need to use the stoppers on the Belimo dampers once functional.
Created By : National TAB **Assigned To :** National TAB - Stephen Tassinaro
Status : Open
Priority : Urgent **Asset Tag :**
Originated Date : 06/11/2025 - Stephen Tassinaro - National TAB

Project Issue Response Details

- **07/08/2025 National TAB - Stephen Tassinaro**
 - Dampers are being set manually and positions marked. Example attached.



07/08/2025



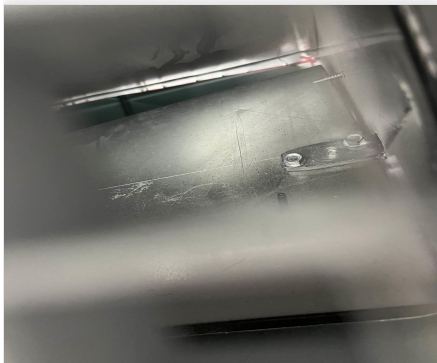
Citrus Cardiology (Crystal River, FL)

Project Issue Information

Issue Name : RTU-1 Returns
Description : RTU-1 has two known issues within the return system. EGRD1-1 is rattling loudly and will need to be repaired. EGRD1-2 damper cannot be closed further to correctly balance the system.
Created By : National TAB **Assigned To :** National TAB - Stephen Tassinaro
Status : Open
Priority : Urgent **Asset Tag :**
Originated Date : 07/21/2025 - Stephen Tassinaro - National TAB

Project Issue File Details

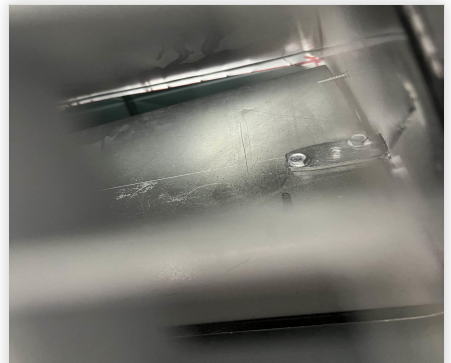
1. [Open](#) IMG_6933.mp4
07/21/2025



07/21/2025



07/21/2025



07/21/2025

1. [Open](#) IMG_6930_1147994595.j..



Citrus Cardiology (Crystal River, FL)

Project Issue Information

Issue Name : SGRD12-5 Duct Undersized
Description : The duct for FCU 12 Diffuser 5 is undersized. 8" duct currently installed, 10" required per mechanical plans. This diffuser being low is resulting in several adjacent diffusers being above design airflow.
Created By : National TAB **Assigned To :** National TAB - Stephen Tassinaro
Status : Closed
Priority : High **Asset Tag :**
Originated Date : 07/22/2025 - Stephen Tassinaro - National TAB

Project Issue File Details



07/22/2025

Project Issue Response Details

- **08/27/2025 National TAB - Stephen Tassinaro**
 - DUCT SIZE CORRECTED AND REBALANCED



ROMERO TRUMPP FARMER ARCHITECTS

Romero Trumpp & Farmer Architects
500 Disney Avenue,
Suite 200
Orlando, Florida 32814
Phone: 321.441.3300

Seal
Eric S Cepul PE 64750



Consultant
CAP 26308
INGENUITY ENGINEERS, INC.
1675 HAZLE NUTTAL RD, ORLANDO, FLORIDA 32817 | 407.384.9307

INTERIOR ALTERATION
CITRUS CARDIOLOGY

Revisions

Issued For:
PERMIT
Issue Date: 06/04/2024
Project Number: 24009
DRAWN BY: GPH CHECKED BY: EDC

FLOOR PLAN - MECHANICAL

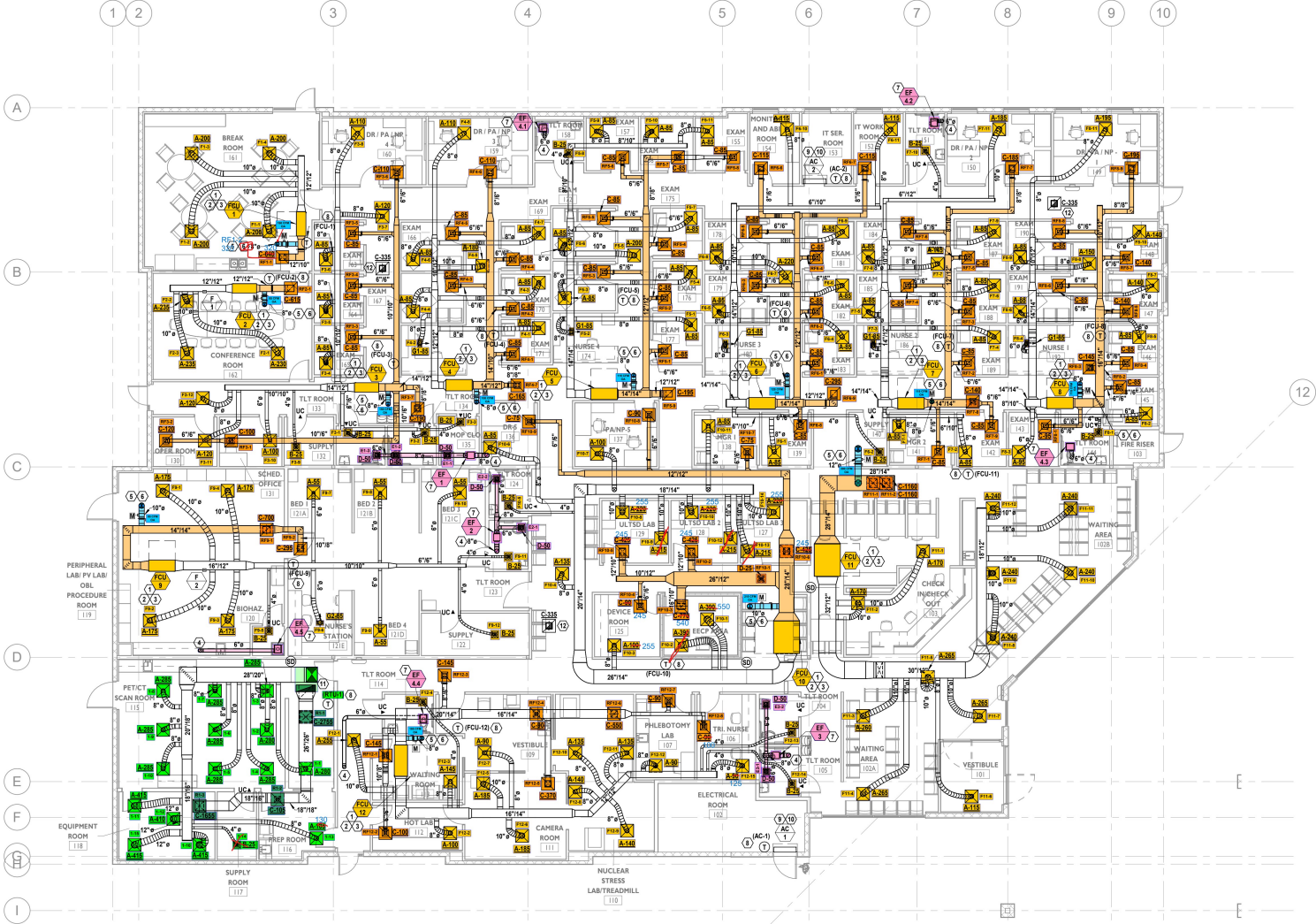
ID-M1.00

GENERAL NOTES:

1. MINIMUM 26 GAUGE GALVANIZED STEEL DUCT FOR ALL EXHAUST AND OUTSIDE AIR DUCTWORK.
2. REFER TO PLUMBING PLANS FOR ROUTING AND DISPOSAL OF CONDENSATE.
3. COORDINATE FINAL DIFFUSER LOCATION WITH ARCHITECT.

REFERENCE NOTES:

1. MOUNT HORIZONTAL FCU PER DETAIL. SEE "HORIZONTAL AIR HANDLING UNIT DETAIL" ON SHEET ID-M6.01 FOR MORE INFORMATION.
2. PROVIDE CONDENSATE PAN AND FLOAT SWITCH FOR FCU. DRAIN PAN SHALL EXTEND 3" MIN PAST EDGE OF UNIT. ALL SIDES. SEE "HORIZONTAL AIR HANDLING UNIT DETAIL" ON SHEET ID-M6.01 FOR MORE INFORMATION.
3. REFRIGERANT LINE SETS AND CONDENSATE DRAIN LINES. ROUTE FROM FCU, ABOVE CEILING, TO ASSOCIATED HP.
4. BATHROOM EXHAUST DUCTWORK TO ROUTE UP TO GOOSENECK ON ROOF. ROUTE THROUGH BUILDING AS SEEN ON PLANS. COORDINATE WITH BUILDING CONDITIONS. SEE "GOOSENECK DETAIL" ON SHEET ID-M6.01 FOR MORE INFORMATION.
5. OUTSIDE AIR DUCTWORK TO ROUTE UP TO GOOSENECK ON ROOF. ROUTE THROUGH BUILDING AS SEEN ON PLANS. COORDINATE WITH BUILDING CONDITIONS. SEE "GOOSENECK DETAIL" ON SHEET ID-M6.01 FOR MORE INFORMATION.
6. PROVIDE 3/4" AUTOMATIC CLOSING MOTORIZED DAMPER. INTERLOCK WITH FCU AND PROVIDE VOLUME DAMPER. ENSURE EASY ACCESSIBILITY TO DAMPERS.
7. PROVIDE AND INSTALL FAN PER DETAIL. FOR INLINE FANS, SEE "INLINE FAN DETAIL" ON SHEET ID-M6.01 FOR MORE INFORMATION. FOR CEILING MOUNTED FANS, SEE "CEILING MOUNTED EXHAUST FAN DETAIL" ON SHEET ID-M6.03 FOR MORE INFORMATION.
8. MOUNT THERMOSTAT AT A MINIMUM 48" AFF.
9. MOUNT AC UNIT ABOVE DOOR, WITH MINIMUM 6" CLEARANCE. PER DETAIL. SEE "WALL MOUNTED AIR CONDITIONING UNIT DETAIL" ON SHEET ID-M6.01 FOR MORE INFORMATION.
10. REFRIGERANT LINE SETS AND CONDENSATE DRAIN LINES. ROUTE FROM AC, ABOVE CEILING, TO ASSOCIATED CU.
11. SA AND RA DUCTWORK TO ROUTE UP TO RTU ON ROOF. REFER TO RTU TYPICAL INSTALLATION DETAIL. WIRE DOWN INFO: DETAIL ON SHEET ID-M6.03 FOR MORE INFORMATION.
12. GRILLE FOR BAROMETRIC RELIEF. DUCT TO ROUTE TO RELIEF HOOD ON ROOF. SEE SHEET ID-M1.30 FOR RELIEF HOOD LOCATION. REFER TO DETAILS ON SHEET ID-M6.03 FOR MORE INFORMATION.



1 FLOOR PLAN - MECHANICAL
1/8" = 1'-0"





ROMERO TRUMPP FARMER ARCHITECTS

Romero Trumpp & Farmer Architects
500 Disney Avenue,
Suite 200
Orlando, Florida 32814
Phone: 321.441.3300

Seal
Eric S Cepul PE 64750



Consultant
CAP 26308 124008.00
INGENUITY ENGINEERS, INC.
PROFESSIONAL ENGINEERS
675 HAZLE HOLLOW DR. ORLANDO, FLORIDA 32834-9307

INTERIOR ALTERATION
CITRUS CARDIOLOGY

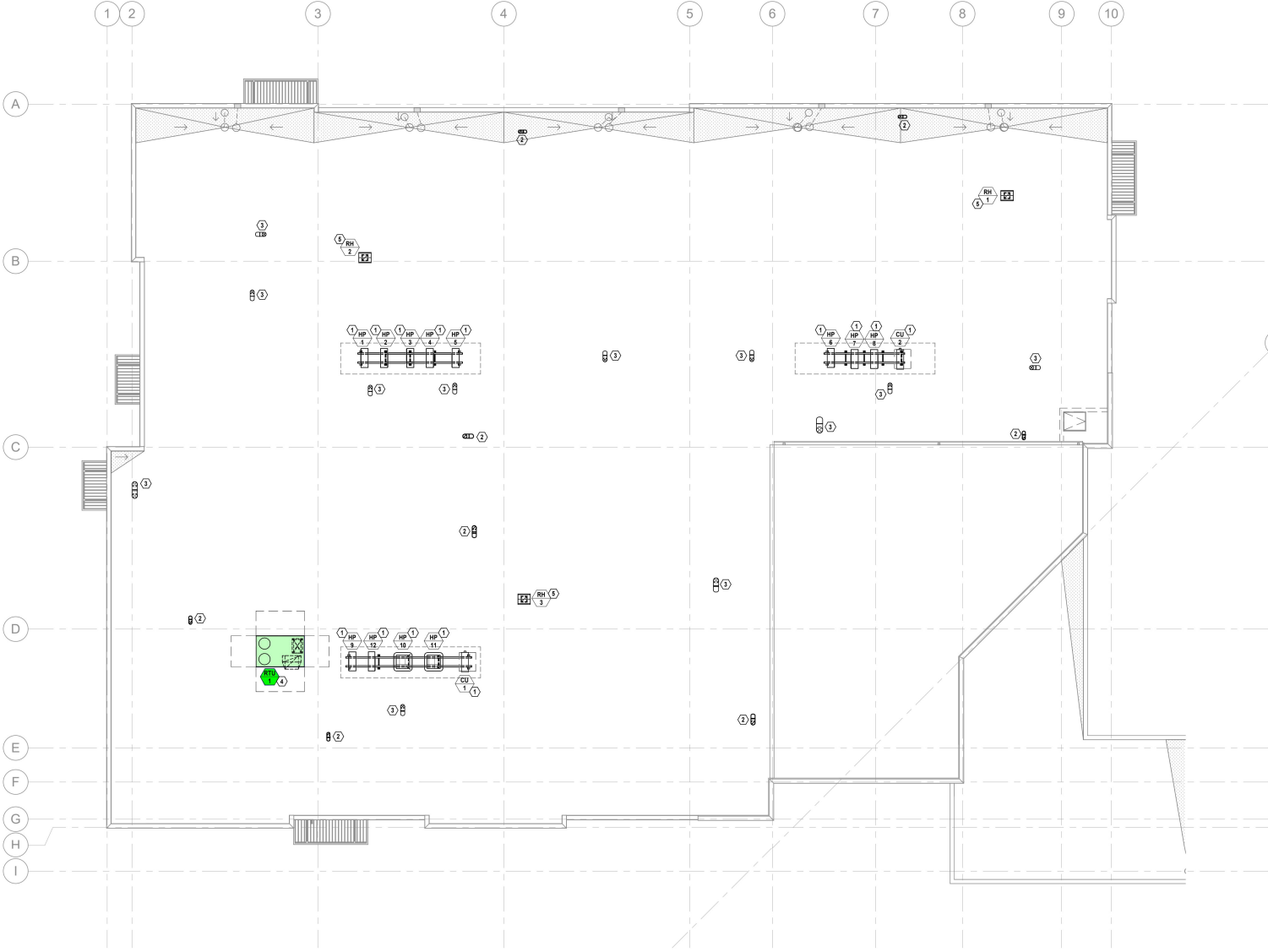
Revisions

Issued For:
PERMIT
Issue Date: 06/04/2024
Project Number: 24009
DRAWN BY: SQM CHECKED BY: EDC

ROOF PLAN - MECHANICAL
ID-M1.30

GENERAL NOTES:
1. ENSURE ALL EXHAUST OUTLETS ARE AT A MINIMUM OF 10'-0" AWAY FROM INTAKE POINTS.

REFERENCE NOTES:
① INSTALL HEAT PUMP/CONDENSING UNIT ON ROOF STAND PER DETAIL. SEE 'CONDENSER STAND ON ROOF DETAIL' ON SHEET ID-M1.02 FOR MORE INFORMATION.
② EXHAUST DUCT FROM BELOW TO GOOSENECK. SEE 'GOOSENECK DETAIL' ON SHEET ID-M6.01 FOR MORE INFORMATION.
③ OUTSIDE AIR DUCT FROM BELOW TO GOOSENECK. SEE 'GOOSENECK DETAIL' ON SHEET ID-M6.01 FOR MORE INFORMATION.
④ PACKAGED ROOFTOP UNIT. REFER TO RTU TYPICAL INSTALLATION DETAIL. WRITE DOWN INFO DETAIL ON SHEET ID-M6.01 FOR MORE INFORMATION.
⑤ REFEEF HOOD FOR BUILDING PRESSURIZATION. REFER TO SHEET ID-M1.00 FOR CONTINUATION. SEE DETAILS ON SHEET ID-M6.03 FOR MORE INFORMATION.



1 ROOF PLAN - MECHANICAL
1/8" = 1'-0"



National TAB

Project: Citrus Cardiology (Crystal River, FL)

System/Unit: AHU/RTU



Asset: RTU-1

AREA:115 PET/CT SCAN

Unit Data		
	Design	Actual
MFG	NA	DAIKIN
Serial Num	-	2412434143
Model Num	NA	DSC1503D000003CAA
Configuration	-	VERTICAL
Num OA Filters 1	-	1
OA Filter Size 1	-	21.125"X39.625"
Num Final Filter 1	-	4
Final Filter Size 1	-	20"X25"X2"

Test Data		
	Design	Actual
SF CFM	4625	4542
SF RPM	-	717 TAP 3
RA CFM	4515	4434
OA CFM	110	108
RL Voltage	208	217/217/218
RL Amperage	10.9	7.6/8.6/8.2
OA Damper Position	-	2.60V
Brake Horse Power	-	2.61

Motor Data		
	Design	Actual
Motor MFG	-	BROAD OCEAN
Horsepower	-	3.5
Motor Rpm	-	1600
Phase	-	3
Rated Voltage	-	208
Rated Amperage	-	10.9

Performance Data		
	Design	Actual
MA Plenum SP	-	-0.56"
Fan Suction SP	-	-0.89"
Fan Discharge SP	-	0.30"
Total ESP	0.5	0.86"
Fan Total SP	-	1.19"
Cooling Coil P.D.	-	0.33"[1]
OA Temp (db/wb)	-	84.6F / 75.3% RH
RA Temp (db/wb)	-	71.2F / 59.9% RH
MA Temp (db/wb)	-	71.0F / 70.7% RH
SA Temp (db/wb)	-	52.5F / 83.1% RH

Completed By: Stephen Tassinaro on 07/21/2025

Notes:

LOW SPEED DAMPER 2.80V / [1] COOLING COIL AND FINAL FILTER P.D. COMBINED / RETURNS NOT BALANCED DUE TO DAMPER ISSUES.

Written By: Stephen Tassinaro on 07/01/2025

Unit Data - PHOTO LOG



07/21/2025

National TAB

Project: Citrus Cardiology (Crystal River, FL)

AHU/RTU



Diffuser Supply (GRD)

RTU-1/115 PET/CT SCAN

Asset							
Asset Name	Location	Type	Size	DESIGN CFM	CFM(1)	FINAL CFM	% to design
SGRD1	115	A	10	280	191	281	100.4
SGRD2	115	A	10	280	138	237	84.6
SGRD3	115	A	10	285	235	301	105.6
SGRD4	115	A	10	285	20	172	60.4
SGRD5	115	A	10	285	266	283	99.3
SGRD6	115	A	10	285	324	287	100.7
SGRD7	115	A	10	285	341	303	106.3
SGRD8	115	A	10	285	354	275	96.5
SGRD9	115	A	10	285	363	288	101.1
SGRD10	115	A	10	285	274	268	94.0
SGRD11	118	A	12	415	461	439	105.8
SGRD12	118	A	12	410	503	421	102.7
SGRD13	116	A	8	130	171	136	104.6
SGRD14	118	A	10	415	455	433	104.3
SGRD15	118	A	10	415	415	418	100.7
Total				4625	4511	4542	98.21%

Diffuser Ret/Exh (GRD)

RTU-1/115 PET/CT SCAN

Asset								
Asset Name	Location	Type	Size	DESIGN CFM	AK	CFM(1)	FINAL CFM	% to design
EGRD1	115	C	22X22	2755	1	1669	2852	103.5
EGRD2	116	C	22X22	105	1	408	333	317.1
EGRD3	118	C	22X22	1655	1	628	1249	75.5
Total				4515		2705	4434	98.21%

Completed By: Stephen Tassinaro on 07/21/2025

Asset	Notes	Date	Written By
SGRD2	SGRD 2 & SGRD 4 - DAMPERS FULL OPEN. TURBULENCE CLOSE TO DROP PREVENTING DIFFUSERS FROM REACHING DESIGN AIRFLOW.	07/01/2025	Stephen Tassinaro
EGRD2	Damper cannot be closed further.	07/21/2025	Stephen Tassinaro

National TAB

Project: Citrus Cardiology (Crystal River, FL)

System/Unit: Fan Coil



Asset: FCU-1

AREA:161 - BREAK

Unit Data		
	Design	Actual
MFG	NA	DAIKIN
Model Num	NA	DFVE36CP1400BA
Serial Num	-	2412463496
Type	-	FCU

Test Data		
	Design	Actual
SFAN CFM	800	968
Motor Speed SetPt	-	MEDIUM
RL Voltage	208	218V
RL Amperage	8.3	1.9
RA CFM	640	813
OA CFM	160	155

Motor Data		
	Design	Actual
Motor MFG	-	NIDEC
Frame	-	48Y
Horsepower	0.75	3/4
Motor Rpm	-	1250
Phase	1	1
Voltage (rated)	208	120/208-240
Amperage (rated)	-	8.3/5.2

Performance Data		
	Design	Actual
Suction ESP	-	-0.28"
Discharge ESP	-	0.16"
Total ESP	0.5	0.44"

Completed By: Stephen Tassinaro on 07/03/2025

Notes:

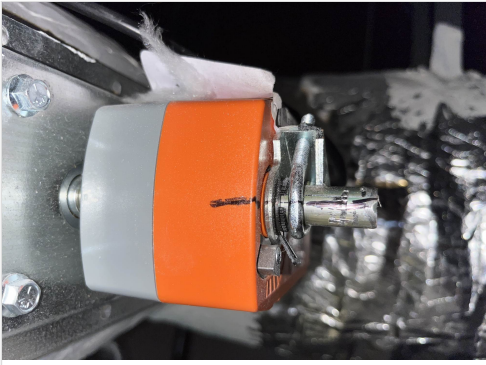
Diffusers balanced proportionally to 121% design as that is the closest speed setting available (Medium).

Written By: Stephen Tassinaro on 08/27/2025

Unit Data - PHOTO LOG



Test Data - PHOTO LOG



07/03/2025

National TAB

Project: Citrus Cardiology (Crystal River, FL)

Fan Coil



Diffuser Supply (GRD)

FCU-1/161 - BREAK

Asset							
Asset Name	Location	Type	Size	DESIGN CFM	CFM(1)	FINAL CFM	% to design
SGRD1	161	A	8	200	256	223	111.5
SGRD2	161	A	8	200	180	260	130.0
SGRD3	161	A	8	200	236	240	120.0
SGRD4	161	A	8	200	296	245	122.5
Total				800	968	968	121%

Diffuser Ret/Exh (GRD)

FCU-1/161 - BREAK

Asset								
Asset Name	Location	Type	Size	DESIGN CFM	AK	CFM(1)	FINAL CFM	% to design
EGRD1	161	C	22X22	320	1	415	410	128.1
EGRD2	161A	C	22X22	320	1	311	403	125.9
Total				640		726	813	127.03%

National TAB

Project: Citrus Cardiology (Crystal River, FL)

System/Unit: Fan Coil



Asset: FCU-2

AREA:162 - CONF RM

Unit Data		
	Design	Actual
MFG	NA	DAIKIN
Model Num	NA	DFVE24BP1400BA
Serial Num	-	2409304229
Type	-	FCU

Test Data		
	Design	Actual
SFAN CFM	700	730
Motor Speed SetPt	-	MEDIUM
RL Voltage	208	218
RL Amperage	3.9	1.0
RA CFM	615	641
OA CFM	85	89

Motor Data		
	Design	Actual
Motor MFG	-	INACCESSIBLE
Horsepower	0.5	0.5
Phase	1	1
Voltage (rated)	208	208/230
Amperage (rated)	-	3.9

Performance Data		
	Design	Actual
Suction ESP	-	-0.16"
Discharge ESP	-	0.07"
Total ESP	0.5	0.23"

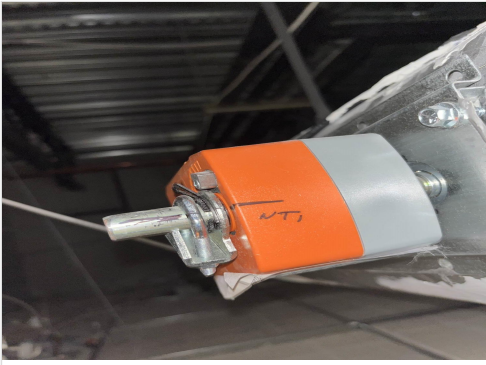
Completed By: Stephen Tassinaro on 07/03/2025

Unit Data - PHOTO LOG



07/03/2025

Test Data - PHOTO LOG



07/03/2025

National TAB

Project: Citrus Cardiology (Crystal River, FL)

Fan Coil



Diffuser Supply (GRD)

FCU-2/162 - CONF RM

Asset							
Asset Name	Location	Type	Size	DESIGN CFM	CFM(1)	FINAL CFM	% to design
SGRD1	162	A	10	230	238	226	98.3
SGRD2	162	A	10	235	272	247	105.1
SGRD3	162	A	10	235	225	257	109.4
Total				700	735	730	104.29%

Diffuser Ret/Exh (GRD)

FCU-2/162 - CONF RM

Asset								
Asset Name	Location	Type	Size	DESIGN CFM	AK	CFM(1)	FINAL CFM	% to design
EGRD1	162	C	22X22	615	1	623	641	104.2
Total				615		623	641	104.23%

Completed By: Stephen Tassinaro on 07/03/2025

National TAB

Project: Citrus Cardiology (Crystal River, FL)

System/Unit: Fan Coil



Asset: FCU-3

AREA:

Unit Data		
	Design	Actual
MFG	NA	DAIKIN
Model Num	NA	DFVE36CP1400BA
Serial Num	-	2412463491
Type	-	FCU

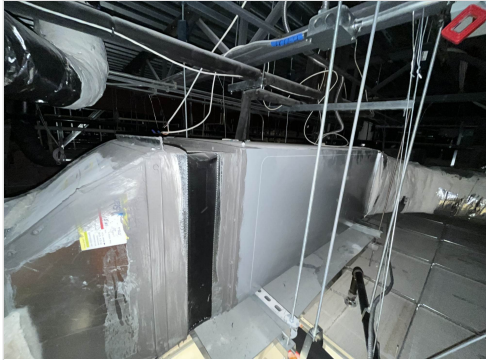
Test Data		
	Design	Actual
SFAN CFM	925	1009
Motor Speed SetPt	-	MEDIUM
RL Voltage	208	216
RL Amperage	8.3	1.7
RA CFM	775	866
OA CFM	150	143

Motor Data		
	Design	Actual
Motor MFG	-	NIDEC MOTOR CORP
Frame	-	48Y
Horsepower	0.75	3/4
Motor Rpm	-	1250
Phase	1	1
Voltage (rated)	208	120/208-240
Amperage (rated)	-	8.3/5.2

Performance Data		
	Design	Actual
Suction ESP	-	-0.19"
Discharge ESP	-	0.09"
Total ESP	0.5	0.28"

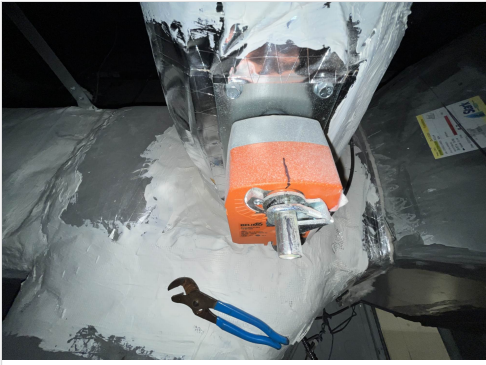
Completed By: Stephen Tassinaro on 07/21/2025

Unit Data - PHOTO LOG



07/21/2025

Test Data - PHOTO LOG



07/21/2025

National TAB

Project: Citrus Cardiology (Crystal River, FL)

Fan Coil



Diffuser Supply (GRD)

FCU-3/

Asset							
Asset Name	Location	Type	Size	DESIGN CFM	CFM(1)	FINAL CFM	% to design
SGRD1	133	B	4	25	44	26	104.0
SGRD2	134	B	4	25	48	29	116.0
SGRD3	134	B	4	25	12	27	108.0
SGRD4	165	A	6	85	58	93	109.4
SGRD5	164	A	6	85	64	92	108.2
SGRD6	163	A	6	85	71	99	116.5
SGRD7	CORR	A	8	120	118	119	99.2
SGRD8	160	A	8	110	118	118	107.3
SGRD9	132	B	4	25	28	26	104.0
SGRD10	131	A	8	100	144	104	104.0
SGRD11	130	A	8	120	157	139	115.8
SGRD12	CORR	A	8	120	171	137	114.2
Total				925	1033	1009	109.08%

Diffuser Ret/Exh (GRD)

FCU-3/

Asset								
Asset Name	Location	Type	Size	DESIGN CFM	AK	CFM(1)	FINAL CFM	% to design
EGRD1	131	C	22X22	100	1	94	104	104.0
EGRD2	130	C	22X22	120	1	66	126	105.0
EGRD3	165	C	22X22	85	1	126	104	122.4
EGRD4	164	C	22X22	85	1	103	100	117.6
EGRD5	163	C	22X22	85	1	95	89	104.7
EGRD6	160	C	22X22	110	1	81	130	118.2
EGRD7	CORR	C	22X22	190	1	348	213	112.1
Total				775		913	866	111.74%

Completed By: Stephen Tassinaro on 07/21/2025

National TAB

Project: Citrus Cardiology (Crystal River, FL)

System/Unit: Fan Coil



Asset: FCU-4

AREA:

Unit Data		
	Design	Actual
MFG	NA	DAIKIN
Model Num	NA	DFVE36CP1400BA
Serial Num	-	2412463493
Type	-	FCU

Test Data		
	Design	Actual
SFAN CFM	800	984
Motor Speed SetPt	-	MEDIUM
RL Voltage	208	216
RL Amperage	8.3	1.6
RA CFM	700	879
OA CFM	100	105

Motor Data		
	Design	Actual
Motor MFG	-	NIDEC MOTOR CORP
Frame	-	48Y
Horsepower	0.75	3/7
Motor Rpm	-	1250
Phase	1	1
Voltage (rated)	208	120/208-240
Amperage (rated)	-	8.3/5.2

Performance Data		
	Design	Actual
Suction ESP	-	-0.15
Discharge ESP	-	0.17"
Total ESP	0.5	0.32"

Completed By: Stephen Tassinaro on 07/21/2025

Notes:
Proportionally balanced to 123% design based on the fan speeds available.

Written By: Stephen Tassinaro on 08/27/2025

Unit Data - PHOTO LOG



07/21/2025

National TAB

Project: Citrus Cardiology (Crystal River, FL)

Fan Coil



Diffuser Supply (GRD)

FCU-4/

Asset							
Asset Name	Location	Type	Size	DESIGN CFM	CFM(1)	FINAL CFM	% to design
SGRD1	171	A	6	85	75	95	111.8
SGRD2		G1	10X6	85	99	98	115.3
SGRD3	170	A	6	85	78	107	125.9
SGRD4	167	A	6	85	119	106	124.7
SGRD5	CORR	A	8	180	175	227	126.1
SGRD6	166	A	6	85	158	108	127.1
SGRD7	169	A	6	85	97	101	118.8
SGRD8	159	A	8	110	196	142	129.1
Total				800	997	984	123%

Diffuser Ret/Exh (GRD)

FCU-4/

Asset								
Asset Name	Location	Type	Size	DESIGN CFM	AK	CFM(1)	FINAL CFM	% to design
EGRD1	171	C	22X22	85	1	166	107	125.9
EGRD2	170	C	22X22	85	1	125	104	122.4
EGRD3	167	C	22X22	85	1	118	111	130.6
EGRD4	169	C	22X22	85	1	13	116	136.5
EGRD5	166	C	22X22	85	1	114	114	134.1
EGRD6	159	C	22X22	110	1	113	130	118.2
EGRD7	CORR	C	22X22	165	1	244	197	119.4
Total				700		893	879	125.57%

Completed By: Stephen Tassinaro on 07/25/2025

National TAB

Project: Citrus Cardiology (Crystal River, FL)

System/Unit: Fan Coil



Asset: FCU-5

AREA:

Unit Data		
	Design	Actual
MFG	NA	DAIKIN
Model Num	NA	DFVE36CP1400BA
Serial Num	-	2412463494
Type	-	FCU

Test Data		
	Design	Actual
SFAN CFM	990	1018
Motor Speed SetPt	-	MEDIUM
RL Voltage	208	211
RL Amperage	8.3	1.7
RA CFM	875	909
OA CFM	115	109

Motor Data		
	Design	Actual
Motor MFG	-	NIDEC MOTOR CORP.
Frame	-	48Y
Horsepower	0.75	3/5
Motor Rpm	-	1250
Phase	1	1
Voltage (rated)	208	120/208-240
Amperage (rated)	-	8.3/5.2

Performance Data		
	Design	Actual
Suction ESP	-	-0.19"
Discharge ESP	-	0.11"
Total ESP	0.5	0.30"

Completed By: Stephen Tassinaro on 07/21/2025

Unit Data - PHOTO LOG



07/21/2025

Test Data - PHOTO LOG



07/21/2025

National TAB

Project: Citrus Cardiology (Crystal River, FL)

Fan Coil



Diffuser Supply (GRD)

FCU-5/

Asset							
Asset Name	Location	Type	Size	DESIGN CFM	CFM(1)	FINAL CFM	% to design
SGRD1	177	A	6	85	191	89	104.7
SGRD2	174	G1	10X6	85	113	81	95.3
SGRD3	173	A	6	85	58	87	102.4
SGRD4	176	A	6	85	54	93	109.4
SGRD5	CORR	A	8	200	324	219	109.5
SGRD6	172	A	6	85	187	82	96.5
SGRD7	175	A	6	85	180	84	98.8
SGRD8	158	B	4	25	74	27	108.0
SGRD9	157	A	6	85	80	84	98.8
SGRD10	156	A	6	85	228	82	96.5
SGRD11	155	A	6	85	185	90	105.9
Total				990	1674	1018	102.83%

Diffuser Ret/Exh (GRD)

FCU-5/

Asset								
Asset Name	Location	Type	Size	DESIGN CFM	AK	CFM(1)	FINAL CFM	% to design
EGRD1	177	C	22X22	85	1	186	83	97.6
EGRD2	176	C	22X22	85	1	129	88	103.5
EGRD3	173	C	22X22	85	1	136	82	96.5
EGRD4	175	C	22X22	85	1	162	87	102.4
EGRD5	172	C	22X22	85	1	160	83	97.6
EGRD6	157	C	22X22	85	1	161	91	107.1
EGRD7	156	C	22X22	85	1	129	92	108.2
EGRD8	155	C	22X22	85	1	136	84	98.8
EGRD9	CORR	C	22X22	195	1	218	219	112.3
Total				875		1417	909	103.89%

Completed By: Stephen Tassinaro on 07/21/2025

National TAB

Project: Citrus Cardiology (Crystal River, FL)

System/Unit: Fan Coil



Asset: FCU-6

AREA:

Unit Data		
	Design	Actual
MFG	NA	DAIKIN
Model Num	NA	DFVE36CP1400BA
Serial Num	-	2412469157
Type	-	FCU

Test Data		
	Design	Actual
SFAN CFM	1070	1023
Motor Speed SetPt	-	MEDIUM
RL Voltage	208	217
RL Amperage	8.3	1.7
RA CFM	1035	905
OA CFM	120	118

Motor Data		
	Design	Actual
Motor MFG	-	NIDEC MOTOR CORP.
Frame	-	48Y
Horsepower	0.75	3/4
Motor Rpm	-	1250
Phase	1	1
Voltage (rated)	208	120/208-240
Amperage (rated)	-	8.3/5.2

Performance Data		
	Design	Actual
Suction ESP	-	-0.14"
Discharge ESP	-	0.15"
Total ESP	0.5	0.29"

Completed By: Stephen Tassinaro on 07/21/2025

Unit Data - PHOTO LOG



07/21/2025

Test Data - PHOTO LOG



07/21/2025

National TAB

Project: Citrus Cardiology (Crystal River, FL)

Fan Coil



Diffuser Supply (GRD)

FCU-6/

Asset							
Asset Name	Location	Type	Size	DESIGN CFM	CFM(1)	FINAL CFM	% to design
SGRD1	139	A	6	85	156'	87	102.4
SGRD2	140	B	4	25	38	24	96.0
SGRD3	180	G1	10X6	85	118	76	89.4
SGRD4	183	A	6	85	120	75	88.2
SGRD5	179	A	6	85	135	82	96.5
SGRD6	182	A	6	85	115	79	92.9
SGRD7	179	A	10	220	340	209	95.0
SGRD8	178	A	6	85	134	79	92.9
SGRD9	181	A	6	85	138	79	92.9
SGRD10	154	A	8	115	196	117	101.7
SGRD11	152	A	8	115	191	116	100.9
Total				1070	1525	1023	95.61%

Diffuser Ret/Exh (GRD)

FCU-6/

Asset								
Asset Name	Location	Type	Size	DESIGN CFM	AK	CFM(1)	FINAL CFM	% to design
EGRD1	183	C	22X22	85	1	32	72	84.7
EGRD2	182	C	22X22	85	1	66	76	89.4
EGRD3	179	C	22X22	85	1	204	72	84.7
EGRD4	181	C	22X22	85	1	47	75	88.2
EGRD5	178	C	22X22	85	1	82	73	85.9
EGRD6	154	C	22X22	115	1	167	98	85.2
EGRD7	152	C	22X22	115	1	41	102	88.7
EGRD8	139	C	22X22	85	1	233	76	89.4
EGRD9	CORR	C	22X22	295	1	705	262	88.8
Total				1035		1577	906	87.54%

Completed By: Kristopher Passley on 06/12/2025

National TAB

Project: Citrus Cardiology (Crystal River, FL)

System/Unit: Fan Coil



Asset: FCU-7

AREA:

Unit Data		
	Design	Actual
MFG	NA	DAIKIN
Model Num	NA	DFVE36CP1400BA
Serial Num	-	2412469150
Type	-	FCU

Test Data		
	Design	Actual
SFAN CFM	1035	997
Motor Speed SetPt	-	MEDIUM
RL Voltage	208	211
RL Amperage	8.3	1.6
RA CFM	940	876
OA CFM	115	121

Motor Data		
	Design	Actual
Motor MFG	-	NIDEC MOTOR CORP
Frame	-	48Y
Horsepower	0.75	3/4
Motor Rpm	-	1250
Phase	1	1
Voltage (rated)	208	120/208-240
Amperage (rated)	-	8.3/5.2

Performance Data		
	Design	Actual
Suction ESP	-	-0.24"
Discharge ESP	-	0.15"
Total ESP	0.5	0.39"

Completed By: Stephen Tassinaro on 07/21/2025

Unit Data - PHOTO LOG



07/22/2025

Test Data - PHOTO LOG



07/22/2025

National TAB

Project: Citrus Cardiology (Crystal River, FL)

Fan Coil



Diffuser Supply (GRD)

FCU-7/

Asset							
Asset Name	Location	Type	Size	DESIGN CFM	CFM(1)	FINAL CFM	% to design
SGRD1	141	A	6	85	24	84	98.8
SGRD2	142	A	6	85	90	88	103.5
SGRD3	185	G1	10X6	85	103	82	96.5
SGRD4	189	A	6	85	93	82	96.5
SGRD5	185	A	6	85	92	81	95.3
SGRD6	188	A	6	85	93	82	96.5
SGRD7	CORR	A	8	145	152	135	93.1
SGRD8	184	A	6	85	162	85	100.0
SGRD9	187	A	6	85	91	82	96.5
SGRD10	151	B	4	25	154	25	100.0
SGRD11	150	A	8	185	213	171	92.4
Total				1035	1267	997	96.33%

Diffuser Ret/Exh (GRD)

FCU-7/

Asset								
Asset Name	Location	Type	Size	DESIGN CFM	AK	CFM(1)	FINAL CFM	% to design
EGRD1	141	C	22X22	85	1	220	80	94.1
EGRD2	189	C	22X22	85	1	19	87	102.4
EGRD3	188	C	22X22	85	1	206	78	91.8
EGRD4	185	C	22X22	85	1	183	79	92.9
EGRD5	187	C	22X22	85	1	163	79	92.9
EGRD6	184	C	22X22	85	1	162	80	94.1
EGRD7	150	C	22X22	185	1	40	182	98.4
EGRD8	CORR	C	22X22	140	1	336	132	94.3
EGRD9	142	C	22X22	85	1	161	79	92.9
Total				920		1490	876	95.22%

Completed By: Kristopher Passley on 06/12/2025

National TAB

Project: Citrus Cardiology (Crystal River, FL)

System/Unit: Fan Coil



Asset: FCU-8

AREA:

Unit Data		
	Design	Actual
MFG	NA	DAIKIN
Model Num	NA	DFVE36CP1400BA
Serial Num	-	2412469153
Type	-	FCU

Test Data		
	Design	Actual
SFAN CFM	1170	1693
Motor Speed SetPt	-	HIGH SPEED
RL Voltage	208	212
RL Amperage	8.3	4.5
RA CFM	1055	1577
OA CFM	115	116

Motor Data		
	Design	Actual
Motor MFG	-	NIDEC MOTOR CORP
Frame	-	48Y
Horsepower	0.75	3/4
Motor Rpm	-	1250
Phase	1	1
Voltage (rated)	208	120/208-240
Amperage (rated)	-	8.3/5.2

Performance Data		
	Design	Actual
Suction ESP	-	-0.67"
Discharge ESP	-	0.43"
Total ESP	0.5	1.1"

Completed By: Stephen Tassinaro on 07/21/2025

Notes:

Unit was balanced with fan at 100%(high speed). Total airflow was at 144% of design. Unit was then turned down to Medium speed and total airflow was 89% of design. Pressure readings were take with fan in high speed. In medium speed pressure fell into design. Suction -0.25" Discharge 0.18"

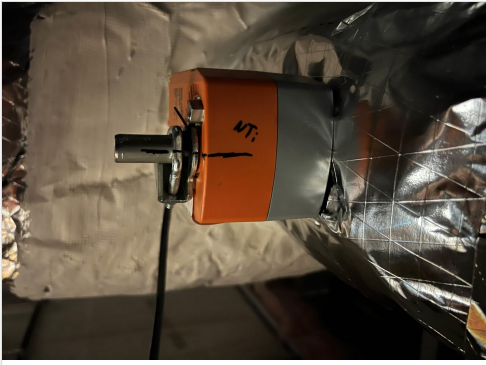
Written By: Stephen Tassinaro on 08/27/2025

Unit Data - PHOTO LOG



07/21/2025

Test Data - PHOTO LOG



07/22/2025

National TAB

Project: Citrus Cardiology (Crystal River, FL)

Fan Coil



Diffuser Supply (GRD)

FCU-8/

Asset							
Asset Name	Location	Type	Size	DESIGN CFM	CFM(1)	FINAL CFM	% to design
SGRD1	144	B	4	25	52	36	144.0
SGRD2	145	A	6	85	48	124	145.9
SGRD3	143	A	6	95	40	143	150.5
SGRD4	192	G1	10X6	85	112	113	132.9
SGRD5	146	A	6	85	152	118	138.8
SGRD6	191	A	6	85	56	123	144.7
SGRD7	147	A	8	140	281	206	147.1
SGRD8	CORR	A	8	150	262	223	148.7
SGRD9	190	A	6	85	106	120	141.2
SGRD10	148	A	8	140	274	204	145.7
SGRD11	149	A	8	195	271	283	145.1
Total				1170	1654	1693	144.7%

Diffuser Ret/Exh (GRD)

FCU-8/

Asset								
Asset Name	Location	Type	Size	DESIGN CFM	AK	CFM(1)	FINAL CFM	% to design
EGRD1	143	C	22X22	95	1	250	148	155.8
EGRD2	145	C	22X22	85	1	254	123	144.7
EGRD3	192	C	22X22	145	1	314	220	151.7
EGRD4	146	C	22X22	85	1	187	128	150.6
EGRD5	147	C	22X22	140	1	44	210	150.0
EGRD6	191	C	22X22	85	1	145	132	155.3
EGRD7	148	C	22X22	140	1	153	203	145.0
EGRD8	190	C	22X22	85	1	79	127	149.4
EGRD9	149	C	22X22	195	1	42	286	146.7
Total				1055		1468	1577	149.48%

Completed By: Stephen Tassinaro on 07/21/2025

National TAB

Project: Citrus Cardiology (Crystal River, FL)

System/Unit: Fan Coil



Asset: FCU-9

AREA:

Unit Data		
	Design	Actual
MFG	NA	DAIKIN
Model Num	NA	DFVE36CP1400BA
Serial Num	-	2412469148
Type	-	FCU

Test Data		
	Design	Actual
SFAN CFM	725	1034
Motor Speed SetPt	-	MEDIUM
RL Voltage	208	217
RL Amperage	8.3	1.8
RA CFM	640	951
OA CFM	85	83

Motor Data		
	Design	Actual
Motor MFG	-	NIDEC MOTOR CORP
Frame	-	48Y
Horsepower	0.75	3/4
Motor Rpm	-	1250
Phase	1	1
Voltage (rated)	208	120/ 208-240
Amperage (rated)	-	8.3/5.2

Performance Data		
	Design	Actual
Suction ESP	-	-0.20"
Discharge ESP	-	0.09"
Total ESP	0.5	0.29"

Completed By: Stephen Tassinaro on 08/27/2025

Notes:

Proportionally balanced to 142% of design, 1034 CFM total. In low speed the unit outputs approximately 570CFM and in high speed the unit outputs approximately 1580CFM.

Written By: Stephen Tassinaro on 08/27/2025

Unit Data - PHOTO LOG



07/21/2025

Test Data - PHOTO LOG



07/21/2025

National TAB

Project: Citrus Cardiology (Crystal River, FL)

Fan Coil



Diffuser Supply (GRD)

FCU-9/

Asset							
Asset Name	Location	Type	Size	DESIGN CFM	CFM(1)	FINAL CFM	% to design
SGRD1	119	A	8	175	103	229	130.9
SGRD2	119	A	8	175	127	256	146.3
SGRD3	119	A	8	175	138	260	148.6
SGRD4	119	A	8	175	160	253	144.6
SGRD5	120	B	4	25	46	36	144.0
Total				725	574	1034	142.62%

Diffuser Ret/Exh (GRD)

FCU-9/

Asset								
Asset Name	Location	Type	Size	DESIGN CFM	AK	CFM(1)	FINAL CFM	% to design
EGRD1	119	C	22X22	640	1	781	951	148.6
Total				640		781	951	148.59%

Completed By: Stephen Tassinaro on 08/27/2025

Asset	Notes	Date	Written By
SGRD1	Full Open, Tap installed immediately after turn in duct.	07/21/2025	Stephen Tassinaro
SGRD2	Full Open, Tap installed immediately after turn in duct.	07/21/2025	Stephen Tassinaro

National TAB

Project: Citrus Cardiology (Crystal River, FL)

System/Unit: Fan Coil



Asset: FCU-10

AREA:

Unit Data		
	Design	Actual
MFG	NA	DAIKIN
Model Num	NA	DFVE60DP1400BA
Serial Num	-	2409257631
Type	-	FCU

Test Data		
	Design	Actual
SFAN CFM	2000	2175
Motor Speed SetPt	-	HIGH
RL Voltage	208	215
RL Amperage	8.3	5.2
RA CFM	1785	1946
OA CFM	215	229

Motor Data		
	Design	Actual
Motor MFG	-	NIDEC MOTOR CORP
Horsepower	1.0	3/4
Phase	1	1
Voltage (rated)	208	120/208
Amperage (rated)	-	8.3/5.2

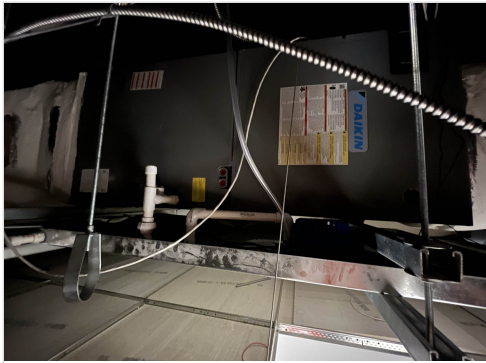
Performance Data		
	Design	Actual
Suction ESP	-	-0.29"
Discharge ESP	-	0.11"
Total ESP	0.5	0.40"

Completed By: Stephen Tassinaro on 07/21/2025

Notes:
Proportionally balanced to 109% design.

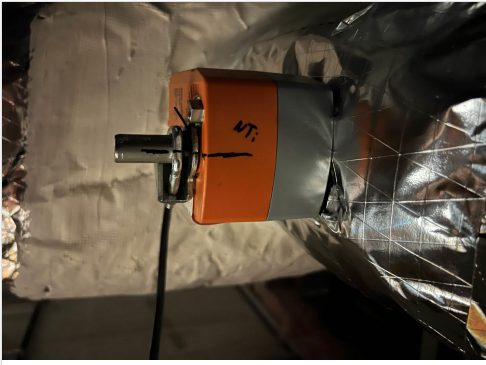
Written By: Stephen Tassinaro on 08/27/2025

Unit Data - PHOTO LOG



07/16/2025

Test Data - PHOTO LOG



07/21/2025

National TAB

Project: Citrus Cardiology (Crystal River, FL)

Fan Coil



Diffuser Supply (GRD)

FCU-10/

Asset							
Asset Name	Location	Type	Size	DESIGN CFM	CFM(1)	FINAL CFM	% to design
SGRD1	126	A	12	550	351	601	109.3
SGRD2	125	A	8	255	128	256	100.4
SGRD3	CORR	A	8	135	111	136	100.7
SGRD4	124	B	4	25	46	28	112.0
SGRD5	136	A	6	85	118	94	110.6
SGRD6	137	A	8	100	87	101	101.0
SGRD7	129	A	10	255	173	269	105.5
SGRD8	128	A	10	255	202	297	116.5
SGRD9	138	A	6	85	35	94	110.6
SGRD10	127	A	10	255	193	299	117.3
Total				2000	1444	2175	108.75%

Diffuser Ret/Exh (GRD)

FCU-10/

Asset								
Asset Name	Location	Type	Size	DESIGN CFM	AK	CFM(1)	FINAL CFM	% to design
EGRD1	CORR	D	10X10	25	1	248	44	176.0
EGRD2	128	C	22X22	245	1	249	263	107.3
EGRD3	126	C	22X22	540	1	545	591	109.4
EGRD4	125	C	22X22	245	1	202	264	107.8
EGRD5	129	C	22X22	245	1	207	280	114.3
EGRD6	127	C	22X22	245	1	172	236	96.3
EGRD7	138	C	22X22	75	1	139	83	110.7
EGRD8	137	C	22X22	90	1	79	104	115.6
EGRD9	136	C	22X22	75	1	95	81	108.0
Total				1785		1936	1946	109.02%

Completed By: Stephen Tassinaro on 07/22/2025

Asset	Notes	Date	Written By
EGRD1	DAMPER IS FULLY CLOSED.	07/01/2025	Stephen Tassinaro

National TAB

Project: Citrus Cardiology (Crystal River, FL)

System/Unit: Fan Coil



Asset: FCU-11

AREA:

Unit Data		
	Design	Actual
MFG	NA	DAIKIN
Model Num	NA	DAX09043AA
Serial Num	-	2408158880
Type	-	FCU

Motor Data		
	Design	Actual
Motor MFG	-	US MOTOR
Frame	-	48Y
Horsepower	1.0	1
Motor Rpm	-	1200
Phase	1	1
Voltage (rated)	208	208-230
Amperage (rated)	-	6.9-6.3

Test Data		
	Design	Actual
SFAN CFM	2710	3096
Motor Speed SetPt	-	TAP 2
RL Voltage	208	217
RL Amperage	6.9	4.0
RA CFM	2320	2694
OA CFM	390	402

Performance Data		
	Design	Actual
Suction ESP	-	-0.11"
Discharge ESP	-	0.24"
Total ESP	0.5	0.35"

Completed By: Stephen Tassinaro on 08/27/2025

Notes:
Proportionally balanced at 114% design. Next speed tap slows fan down below design.

Written By: Stephen Tassinaro on 08/27/2025

National TAB

Project: Citrus Cardiology (Crystal River, FL)

Fan Coil



Diffuser Supply (GRD)

FCU-11/

Asset							
Asset Name	Location	Type	Size	DESIGN CFM	CFM(1)	FINAL CFM	% to design
SGRD1	103	A	8	170	137	146	85.9
SGRD2	103	A	8	170	195	181	106.5
SGRD3	102A	A	10	260	249	331	127.3
SGRD4	102A	A	10	265	299	301	113.6
SGRD5	102A	A	10	265	266	306	115.5
SGRD6	101	A	8	115	169	133	115.7
SGRD7	102A	A	10	265	272	285	107.5
SGRD8	102B	A	10	240	306	284	118.3
SGRD9	102B	A	10	240	297	287	119.6
SGRD10	102B	A	10	240	262	284	118.3
SGRD11	102B	A	10	240	297	273	113.8
SGRD12	102B	A	10	240	168	285	118.8
Total				2710	2917	3096	114.24%

Diffuser Ret/Exh (GRD)

FCU-11/

Asset								
Asset Name	Location	Type	Size	DESIGN CFM	AK	CFM(1)	FINAL CFM	% to design
EGRD1	103	C	22X22	1160	1	1423	1256	108.3
EGRD2	103	C	22X22	1160	1	1627	1438	124.0
Total				2320		3050	2694	116.12%

Completed By: Stephen Tassinaro on 08/27/2025

Asset	Notes	Date	Written By
SGRD1	SGRD 1 & 2 DAMPERS NOT LOCKED IN FULL OPEN POSITIONS. THESE DAMPERS ARE ALSO NOT ACCESSIBLE. NO COMFORT ISSUES, AS THESE DIFFUSERS SERVE AN OPEN RECEPTION AREA.	08/27/2025	Stephen Tassinaro

National TAB

Project: Citrus Cardiology (Crystal River, FL)

System/Unit: Fan Coil



Asset: FCU-12

AREA:

Unit Data		
	Design	Actual
MFG	NA	DAIKIN
Model Num	NA	DFVE60DP1400BA
Serial Num	-	2407198529
Type	-	FCU

Test Data		
	Design	Actual
SFAN CFM	1765	2180
Motor Speed SetPt	-	HIGH
RL Voltage	208	216
RL Amperage	8.3	5.2
RA CFM	1580	2002
OA CFM	185	178

Motor Data		
	Design	Actual
Motor MFG	-	NIDEC MOTOR CORP.
Frame	-	48Y
Horsepower	0.75	3/4
Motor Rpm	-	1250
Phase	1	1
Voltage (rated)	208	120/208-240
Amperage (rated)	-	8.3/5.2

Performance Data		
	Design	Actual
Suction ESP	-	-0.48"
Discharge ESP	-	0.09"
Total ESP	0.5	0.57"

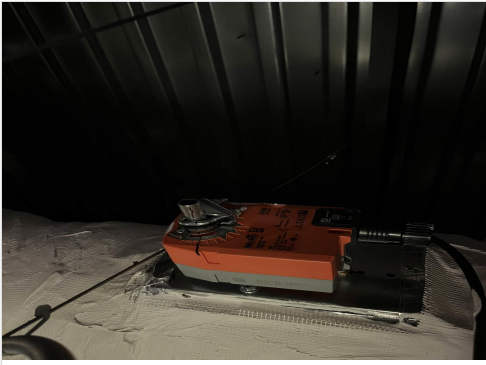
Completed By: Stephen Tassinaro on 08/27/2025

Unit Data - PHOTO LOG



07/21/2025

Test Data - PHOTO LOG



07/21/2025

National TAB

Project: Citrus Cardiology (Crystal River, FL)

Fan Coil



Diffuser Supply (GRD)

FCU-12/

Asset							
Asset Name	Location	Type	Size	DESIGN CFM	CFM(1)	FINAL CFM	% to design
SGRD1	CORR	A	10	255	198	325	127.5
SGRD2	112	A	8	100	262	123	123.0
SGRD3	113	A	8	145	210	184	126.9
SGRD4	114	B	4	25	34	28	112.0
SGRD5	111	A	8	185	143	213	115.1
SGRD6	111	A	8	185	310	234	126.5
SGRD7	109	A	6	90	161	101	112.2
SGRD8	110	A	8	140	241	177	126.4
SGRD9	110	A	8	140	224	164	117.1
SGRD10	109	A	8	135	46	171	126.7
SGRD11	109	A	8	135	54	161	119.3
SGRD12	107	A	6	90	121	99	110.0
SGRD13	104	B	4	25	23	31	124.0
SGRD14	105	B	4	25	23	30	120.0
SGRD15	106	A	6	125	138	139	111.2
Total				1800	2188	2180	121.11%

Diffuser Ret/Exh (GRD)

FCU-12/

Asset								
Asset Name	Location	Type	Size	DESIGN CFM	AK	CFM(1)	FINAL CFM	% to design
EGRD1	113	C	22X22	145	1	325	185	127.6
EGRD2	112	C	22X22	100	1	271	134	134.0
EGRD3	CORR	C	22X22	145	1	364	185	127.6
EGRD4	109	C	22X22	90	1	76	124	137.8
EGRD5	111	C	22X22	370	1	374	447	120.8
EGRD6	109	C	22X22	550	1	238	694	126.2
EGRD7	107	C	22X22	90	1	235	113	125.6
EGRD8	106	C	22X22	90	1	146	120	133.3
Total				1580		2029	2002	126.71%

Completed By: Stephen Tassinaro on 08/27/2025

Asset	Notes	Date	Written By
SGRD5	Duct undersized. 8" installed, 10" required.	07/21/2025	Stephen Tassinaro
EGRD3	Damper cannot be closed further.	07/21/2025	Stephen Tassinaro
EGRD6	6x6 duct too small, return grill unable to achieve design airflow.	07/21/2025	Stephen Tassinaro

National TAB

Project: Citrus Cardiology (Crystal River, FL)

System/Unit: FAN - Exhaust



Asset: EF-1

AREA:RM 133-135

Unit Data		
	Design	Actual
MFG	NA	GREENHECK
Model Num	NA	SQ-70-VGX-QD
Serial Num	-	24123336
Type	INLINE	INLINE

Test Data		
	Design	Actual
CFM	150	141
Motor Frequency	-	DD
System SetPt	-	SPEED CONTROLLER (MARKED)
RL Voltage	120	123
RL Amperage	1.3	0.6
Suction ESP	-	-0.038"
Discharge ESP	-	0.094"
Total ESP	0.3	0.132"
Brake Horse Power	-	0.031

Motor Data		
	Design	Actual
Motor MFG	-	NL
Frame	-	24C
Horsepower	0.067	0.0667
Motor Rpm	1750	1725
Phase	1	1
Voltage (rated)	120	115
Amperage (rated)	-	1.3
Service Factor	-	NL

Completed By: Mark Johnson on 06/12/2025

Unit Data - PHOTO LOG



06/12/2025

National TAB

Project: Citrus Cardiology (Crystal River, FL)

FAN - Exhaust



Diffuser Ret/Exh (GRD)

EF-1/RM 133-135

Asset								
Asset Name	Location	Type	Size	DESIGN CFM	AK	CFM(1)	FINAL CFM	% to design
EGRD1	135	D	10X10	50	1	49	45	90.0
EGRD2	134	D	10X10	50	1	49	50	100.0
EGRD3	133	D	10X10	50	1	34	46	92.0
Total				150		132	141	94%

National TAB

Project: Citrus Cardiology (Crystal River, FL)

System/Unit: FAN - Exhaust



Asset: EF-2

AREA: TLT ROOM 123-124

Unit Data		
	Design	Actual
MFG	NA	GREENHECK
Model Num	NA	SQ-60-VG-X
Serial Num	-	25865930
Type	INLINE	INLINE

Motor Data		
	Design	Actual
Motor MFG	-	NL
Frame	-	24L
Horsepower	0.067	0.0667
Motor Rpm	1750	1725
Phase	1	1
Voltage (rated)	120	115
Amperage (rated)	-	1.3
Service Factor	-	NL

Test Data		
	Design	Actual
CFM	100	103
Motor Frequency	-	DD
System SetPt	-	SPEED CONTROLLER (MARKED)
RL Voltage	120	123
RL Amperage	1.3	0.3
Suction ESP	-	-0.037"
Discharge ESP	-	0.036"
Total ESP	0.3	0.073"
Brake Horse Power	-	0.015

Completed By: Mark Johnson on 06/12/2025

Unit Data - PHOTO LOG



06/12/2025

National TAB

Project: Citrus Cardiology (Crystal River, FL)

FAN - Exhaust



Diffuser Ret/Exh (GRD)

EF-2/TLT ROOM 123-124

Asset								
Asset Name	Location	Type	Size	DESIGN CFM	AK	CFM(1)	FINAL CFM	% to design
EGRD1	123	D	10X10	50	1	145	51	102.0
EGRD2	124	D	10X10	50	1	0	52	104.0
Total				100		145	103	103%

National TAB

Project: Citrus Cardiology (Crystal River, FL)

System/Unit: FAN - Exhaust



Asset: EF-3

AREA: TLT ROOM 104-105

Unit Data		
	Design	Actual
MFG	NA	GREENHECK
Model Num	NA	SQ-60-VG-X
Serial Num	-	25865929
Type	INLINE	INLINE

Test Data		
	Design	Actual
CFM	100	101
Motor Frequency	-	DD
System SetPt	-	SPEED CONTROLLER (MARKED)
RL Voltage	120	125
RL Amperage	1.3	0.3
Suction ESP	-	-0.059"
Discharge ESP	-	0.035"
Total ESP	0.3	0.094"
Brake Horse Power	-	0.015

Motor Data		
	Design	Actual
Motor MFG	-	NL
Frame	-	24L
Horsepower	0.067	0.067
Motor Rpm	1750	1725
Phase	1	1
Voltage (rated)	120	115
Amperage (rated)	-	1.3
Service Factor	-	NL

Completed By: Stephen Tassinaro on 07/21/2025

Unit Data - PHOTO LOG



06/12/2025

National TAB

Project: Citrus Cardiology (Crystal River, FL)

FAN - Exhaust



Diffuser Ret/Exh (GRD)

EF-3/TLT ROOM 104-105

Asset								
Asset Name	Location	Type	Size	DESIGN CFM	AK	CFM(1)	FINAL CFM	% to design
EGRD1	105	D	10X10	50	1	83	51	102.0
EGRD2	104	D	10X10	50	1	85	50	100.0
Total				100		168	101	101%

National TAB

Project: Citrus Cardiology (Crystal River, FL)

System/Unit: FAN - Exhaust



Asset: EF-4.1

AREA:158 - TLT

Unit Data		
	Design	Actual
MFG	NA	GREENHECK
Model Num	NA	SP-AP0511W
Serial Num	-	N/A
Type	CEILING	CEILING

Test Data		
	Design	Actual
CFM	75	80
System SetPt	-	MEDIUM (80CFM)

Motor Data		
	Design	Actual
Motor MFG	-	NL
Frame	-	NL
Horsepower	27.6W	4.6/7.0/11.9 W
Motor Rpm	-	NL
Phase	1	1
Voltage (rated)	120	120
Amperage (rated)	-	NL
Service Factor	-	NL

Completed By: Stephen Tassinaro on 07/17/2025

Unit Data - PHOTO LOG



06/12/2025

National TAB

Project: Citrus Cardiology (Crystal River, FL)

System/Unit: FAN - Exhaust



Asset: EF-4.2

AREA:151 - TLT

Unit Data		
	Design	Actual
MFG	NA	GREENHECK
Model Num	NA	SP-AP0511W
Serial Num	-	N/A
Type	CEILING	CEILING

Test Data		
	Design	Actual
CFM	75	73
System SetPt	-	MEDIUM (80CFM)

Motor Data		
	Design	Actual
Motor MFG	-	NL
Frame	-	NL
Horsepower	27.6W	4.6/7.0/11.9 W
Motor Rpm	-	NL
Phase	1	1
Voltage (rated)	120	120
Amperage (rated)	-	NL
Service Factor	-	NL

Completed By: Stephen Tassinaro on 07/17/2025

Unit Data - PHOTO LOG



06/12/2025

National TAB

Project: Citrus Cardiology (Crystal River, FL)

System/Unit: FAN - Exhaust



Asset: EF-4.3

AREA:144 - TLT

Unit Data		
	Design	Actual
MFG	NA	GREENHECK
Model Num	NA	SP-AP0511W
Serial Num	-	N/A
Type	CEILING	CEILING

Test Data		
	Design	Actual
CFM	75	77
System SetPt	-	MEDIUM (80CFM)

Motor Data		
	Design	Actual
Motor MFG	-	NL
Frame	-	NL
Horsepower	27.6W	4.6/7.1/11.9 W
Motor Rpm	-	NL
Phase	1	1
Voltage (rated)	120	120
Amperage (rated)	-	NL
Service Factor	-	NL

Completed By: Stephen Tassinaro on 07/21/2025

Unit Data - PHOTO LOG



07/21/2025

National TAB

Project: Citrus Cardiology (Crystal River, FL)

System/Unit: FAN - Exhaust



Asset: EF-4.4

AREA:114 - TLT

Unit Data		
	Design	Actual
MFG	NA	GREENHECK
Model Num	NA	SP-AP0511W
Serial Num	-	N/A
Type	CEILING	CEILING

Test Data		
	Design	Actual
CFM	75	74
System SetPt	-	MEDIUM (80CFM)

Motor Data		
	Design	Actual
Motor MFG	-	NL
Frame	-	NL
Horsepower	27.6W	4.6/7.0/11.9 W
Motor Rpm	-	NL
Phase	1	1
Voltage (rated)	120	120
Amperage (rated)	-	NL
Service Factor	-	NL

Completed By: Stephen Tassinaro on 08/27/2025

Unit Data - PHOTO LOG



07/21/2025

National TAB

Project: Citrus Cardiology (Crystal River, FL)

System/Unit: FAN - Exhaust



Asset: EF-4.5

AREA:120 - BIOHAZ

Unit Data		
	Design	Actual
MFG	NA	GREENHECK
Model Num	NA	SP-AP0511W
Serial Num	-	N/A
Type	CEILING	CEILING

Test Data		
	Design	Actual
CFM	75	71
System SetPt	-	MEDIUM (80CFM)

Motor Data		
	Design	Actual
Motor MFG	-	NL
Frame	-	NL
Horsepower	27.6W	4.6/7.0/11.9 W
Motor Rpm	-	NL
Phase	1	1
Voltage (rated)	120	120
Amperage (rated)	-	NL
Service Factor	-	NL

Completed By: Stephen Tassinaro on 07/21/2025

Unit Data - PHOTO LOG



07/21/2025