



ROMERO TRUMPP FARMER ARCHITECTS

Romero Trumpp & Farmer Architects
500 Disney Avenue,
Suite 200
Orlando, Florida 32814
Phone: 321.441.3300

Seal
Eric S Cepul PE 64750



Consultant
CAP 26308
INGENUITY ENGINEERS, INC.
1675 HAZLE NUTTAL RD. ORLANDO, FLORIDA 32814 407.384.9307

INTERIOR ALTERATION
CITRUS CARDIOLOGY

Revisions

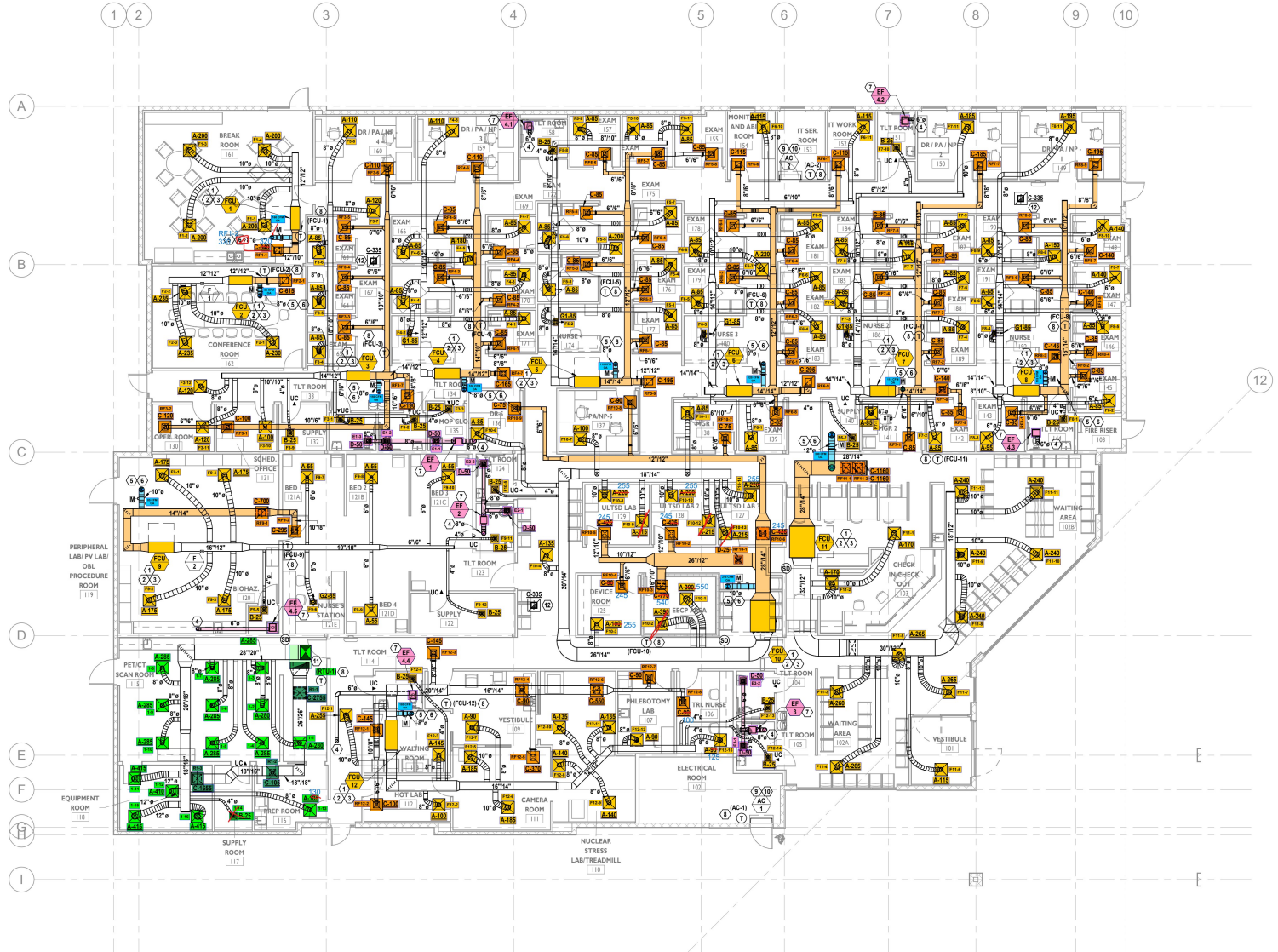
Issued For:
PERMIT
Issue Date: 06/04/2024
Project Number: 24009
DRAWN BY: GPH CHECKED BY: EDC

FLOOR PLAN - MECHANICAL

ID-M1.00

- GENERAL NOTES:**
- MINIMUM 26 GAUGE GALVANIZED STEEL DUCT FOR ALL EXHAUST AND OUTSIDE AIR DUCTWORK.
 - REFER TO PLUMBING PLANS FOR ROUTING AND DISPOSAL OF CONDENSATE.
 - COORDINATE FINAL DIFFUSER LOCATION WITH ARCHITECT.

- REFERENCE NOTES:**
- MOUNT HORIZONTAL FCU PER DETAIL. SEE "HORIZONTAL AIR HANDLING UNIT DETAIL" ON SHEET ID-M6.01 FOR MORE INFORMATION.
 - PROVIDE CONDENSATE PAN AND FLOAT SWITCH FOR FCU. DRAIN PAN SHALL EXTEND 3" MIN PAST EDGE OF UNIT. ALL SIDES. SEE "HORIZONTAL AIR HANDLING UNIT DETAIL" ON SHEET ID-M6.01 FOR MORE INFORMATION.
 - REFRIGERANT LINE SETS AND CONDENSATE DRAIN LINES. ROUTE FROM FCU, ABOVE CEILING, TO ASSOCIATED HP.
 - BATHROOM EXHAUST DUCTWORK TO ROUTE UP TO GOOSENECK ON ROOF. ROUTE THROUGH BUILDING AS SEEN ON PLANS. COORDINATE WITH BUILDING CONDITIONS. SEE "GOOSENECK DETAIL" ON SHEET ID-M6.01 FOR MORE INFORMATION.
 - OUTSIDE AIR DUCTWORK TO ROUTE UP TO GOOSENECK ON ROOF. ROUTE THROUGH BUILDING AS SEEN ON PLANS. COORDINATE WITH BUILDING CONDITIONS. SEE "GOOSENECK DETAIL" ON SHEET ID-M6.01 FOR MORE INFORMATION.
 - PROVIDE 3/4" AUTOMATIC CLOSING MOTORIZED DAMPER. INTERLOCK WITH FCU AND PROVIDE VOLUME DAMPER. ENSURE EASY ACCESSIBILITY TO DAMPERS.
 - PROVIDE AND INSTALL FAN PER DETAIL. FOR INLINE FANS, SEE "INLINE FAN DETAIL" ON SHEET ID-M6.01 FOR MORE INFORMATION. FOR CEILING MOUNTED FANS, SEE "CEILING MOUNTED EXHAUST FAN DETAIL" ON SHEET ID-M6.03 FOR MORE INFORMATION.
 - MOUNT THERMOSTAT AT A MINIMUM 48" AFF.
 - MOUNT AC UNIT ABOVE DOOR, WITH MINIMUM 6" CLEARANCE. PER DETAIL. SEE "WALL MOUNTED AIR CONDITIONING UNIT DETAIL" ON SHEET ID-M6.01 FOR MORE INFORMATION.
 - REFRIGERANT LINE SETS AND CONDENSATE DRAIN LINES. ROUTE FROM AC, ABOVE CEILING, TO ASSOCIATED CU.
 - SA AND RA DUCTWORK TO ROUTE UP TO RTU ON ROOF. REFER TO RTU TYPICAL INSTALLATION DETAIL. WIRE DOWN INFO: DETAIL ON SHEET ID-M6.03 FOR MORE INFORMATION.
 - GRILLE FOR BAROMETRIC RELIEF. DUCT TO ROUTE TO RELIEF HOOD ON ROOF. SEE SHEET ID-M1.30 FOR RELIEF HOOD LOCATION. REFER TO DETAILS ON SHEET ID-M6.03 FOR MORE INFORMATION.



1 FLOOR PLAN - MECHANICAL
1/8" = 1'-0"



ROMERO TRUMPP FARMER ARCHITECTS

Romero Trumpp & Farmer Architects
500 Disney Avenue,
Suite 200
Orlando, Florida 32814
Phone: 321.441.3300

Seal
Eric S Cepul PE 64750



Consultant
CAP 26308
INGENUITY ENGINEERS, INC.
PROFESSIONAL ENGINEERS
675 HOLLAND AVENUE, SUITE 100, ORLANDO, FLORIDA 32803 | 407.384.9307

INTERIOR ALTERATION
CITRUS CARDIOLOGY

Revisions

Issued For:
PERMIT
Issue Date: 06/04/2024
Project Number: 24009

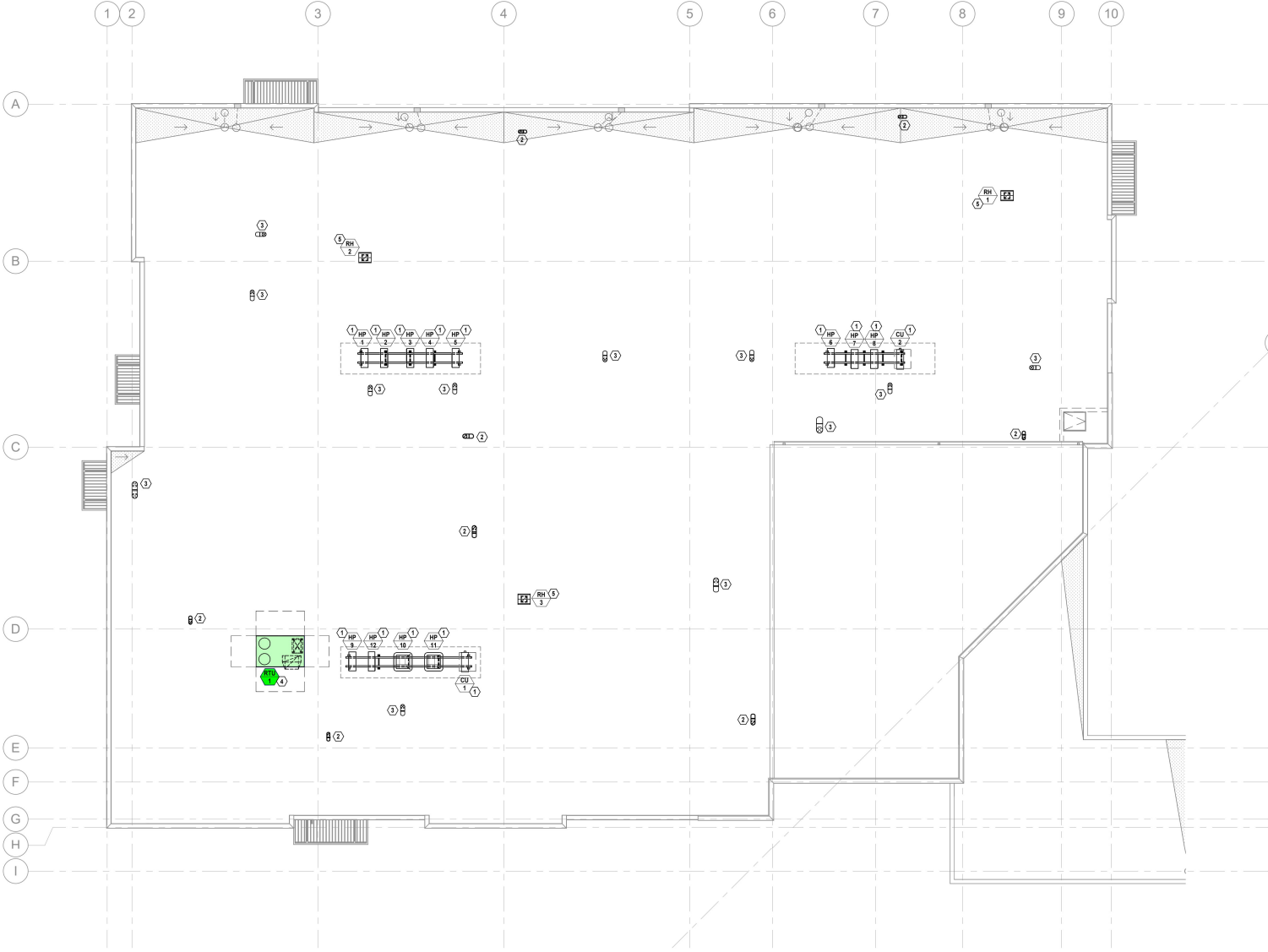
DRAWN BY: SQM CHECKED BY: EDC

ROOF PLAN - MECHANICAL

ID-M1.30

GENERAL NOTES:
1. ENSURE ALL EXHAUST OUTLETS ARE AT A MINIMUM OF 10'-0" AWAY FROM INTAKE POINTS.

REFERENCE NOTES:
① INSTALL HEAT PUMP/CONDENSING UNIT ON ROOF STAND PER DETAIL. SEE 'CONDENSER STAND ON ROOF DETAIL' ON SHEET ID-M1.02 FOR MORE INFORMATION.
② EXHAUST DUCT FROM BELOW TO GOOSENECK. SEE 'GOOSENECK DETAIL' ON SHEET ID-M6.01 FOR MORE INFORMATION.
③ OUTSIDE AIR DUCT FROM BELOW TO GOOSENECK. SEE 'GOOSENECK DETAIL' ON SHEET ID-M6.01 FOR MORE INFORMATION.
④ PACKAGED ROOFTOP UNIT. REFER TO RTU TYPICAL INSTALLATION DETAIL. WRITE DOWN INFO DETAIL ON SHEET ID-M6.01 FOR MORE INFORMATION.
⑤ REFEEF HOOD FOR BUILDING PRESSURIZATION. REFER TO SHEET ID-M1.00 FOR CONTINUATION. SEE DETAILS ON SHEET ID-M6.03 FOR MORE INFORMATION.



1 ROOF PLAN - MECHANICAL
1/8" = 1'-0"