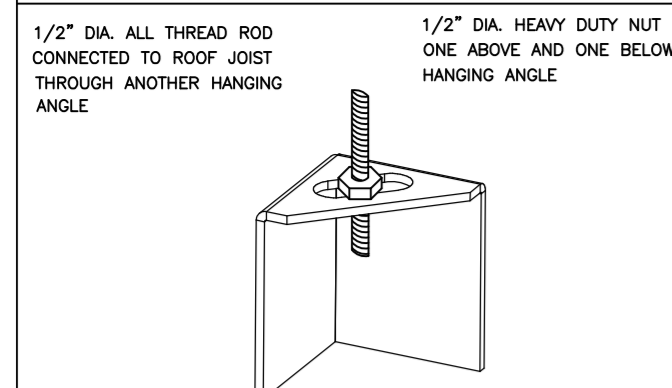


ND-2 HANGING ANGLE DETAIL



1/2" DIA. ALL-THREAD ROD CONNECTED TO ROOF JOIST THROUGH ANOTHER HANGING ANGLE.
1/2" DIA. HEAVY DUTY NUT ONE ABOVE AND ONE BELOW HANGING ANGLE.

*ROD AND NUTS TO BE SUPPLIED BY INSTALLING CONTRACTOR. HANGING ANGLE IS PRE-PUNCHED AT FACTORY.

HANGING ANGLE LOCATIONS

| HOOD STYLE | DIM FROM REAR | DIM FROM FRONT (24" H) | DIM FROM FRONT (30" H) |
|-------------------------|---------------|------------------------|------------------------|
| CANOPY ND2 | 4.166" | 2.246" | 2.246" |
| ND2-PSP-F | 4.166" | 2.246" | 2.246" |
| BACKSHELF BD-2 | 4.166" | 2.246" | - |
| VHB/VHB-G | 36"x36" | 42"x42" | 48"x48" |
| FRONT/BACK DIMS BY SIZE | 2.246" | 2.246" | 2.246" |

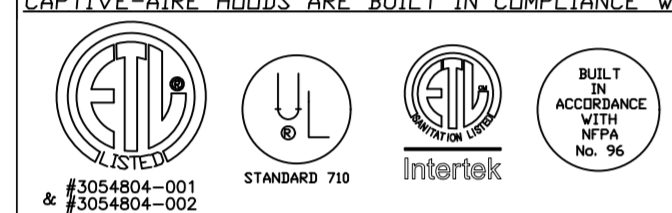
CALCULATIONS UTILIZED

EXHAUST CFM=LENGTH OF HOOD X CFM/LIN.FT. (LOAD)
SUPPLY CFM=EXHAUST CFM X PERCENTAGE REQUIRED
TOTAL DUCT AREA=144 X CFM (FM)
DUCT LENGTH= TOTAL DUCT AREA / DUCT DEPTH

*CAPTIVE-AIRE DUCT CONNECTION SIZES ARE CALCULATED USING AN EXHAUST VELOCITY OF 1500-1800 FPM AND A SUPPLY VELOCITY OF 300-400 FPM.

BUILDING CODES

CAPTIVE-AIRE HOODS ARE BUILT IN COMPLIANCE WITH:



CLEARANCE TO COMBUSTIBLES

CAPTIVE-AIRE HOODS HAVE OPTIONAL CLEARANCE REDUCTION SYSTEMS AVAILABLE AS FOLLOWS:

| MATERIAL | CLEARANCE REDUCTION SYSTEM |
|---------------------|----------------------------|
| NON-COMBUSTIBLE | NONE REQUIRED |
| LIMITED-COMBUSTIBLE | 3" UNINSULATED STANDOFF |
| COMBUSTIBLE | 1" INSULATED STANDOFF |

GENERAL NOTES

INSTALLATION

- ALL ELECTRICAL "FIELD" CONNECTIONS AND RELATED INTERCONNECTIONS BY ELECTRICAL CONTRACTORS.
- ALL PLUMBING "FIELD" CONNECTIONS AND RELATED INTERCONNECTIONS BY PLUMBING CONTRACTORS.
- HANGING BRACKETS LOCATED AND WELDED AS SHOWN ON PLANS. ALL OTHER HANGER MATERIALS PROVIDED BY INSTALLING CONTRACTORS.
- ALL CONNECTIONS FROM CAPTIVE-AIRE DUCT PER MECHANICAL CONTRACTOR'S PLANS.
- COOKING EQUIPMENT TO SHUT-OFF IN EVENT OF FIRE.
- EXHAUST FANS TO TURN ON IN EVENT OF FIRE.
- ALL LIGHTS FIXTURE SHOWN INSTALLED BY CAPTIVE-AIRE ARE FACTORY PREWIRED. INTERCONNECTIONS BETWEEN HOODS AND TO SWITCHES BY ELECTRICAL CONTRACTORS.
- LAMPS FOR LIGHT FIXTURES BY INSTALLING CONTRACTORS.
- SEISMIC RESTRAINTS ARE RESPONSIBILITY OF INSTALLING CONTRACTOR.
- INSTALLING CONTRACTORS ASSUME ALL RELATED RESPONSIBILITY FOR VERIFICATION OF DIMENSIONAL DATA CONTAINED ON THESE DOCUMENTS FOR ACCURACY, INTEGRATION, AND ADMINISTRATION OF CODE REQUIREMENTS IN EFFECT PRIOR TO ANY RELEASE FOR PRODUCTION OF EQUIPMENT SHOWN.

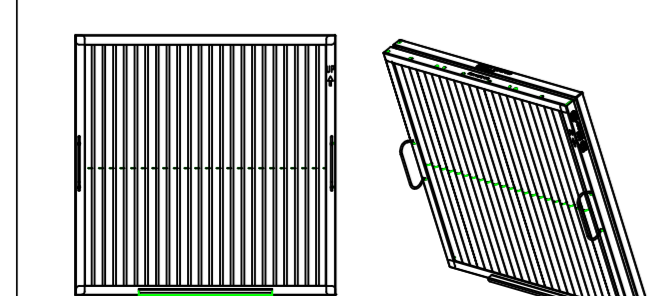
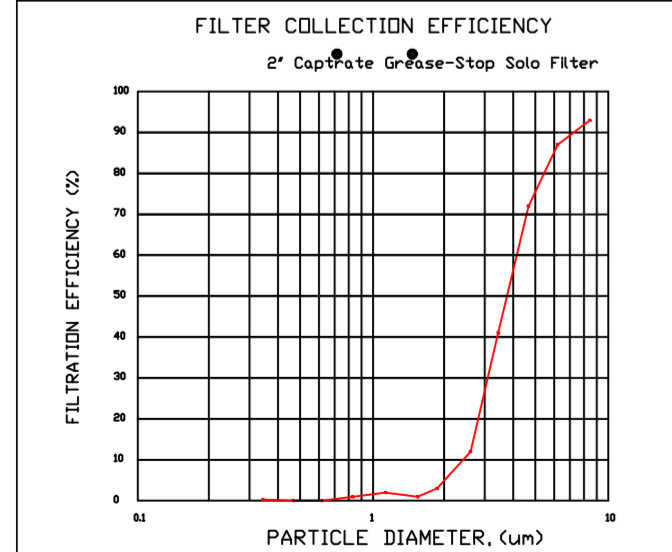
BALANCE

- KITCHEN HOODS MUST BE BALANCED WITH KITCHEN.
- KITCHEN SHALL BE NEGATIVE WITH RESPECT TO DINING AREA.
- RESTAURANT SHALL BE POSITIVE WITH RESPECT TO AMBIENT PRESSURE.

ADDITIONAL

- WRITTEN HOOD DIMENSIONS HAVE PRECEDENCE OVER SCALE.
- SIGNED AND "APPROVED" COPIES OF THIS DOCUMENT MUST BE RECEIVED BY THE FACTORY PRIOR TO COMMENCEMENT OF FABRICATION.

FILTER DETAIL



CaptiveAire Captrate Solo Filter
ETL Listed Grease Extracting Filter
Made From 430 Stainless Steel

HOOD INFORMATION - JOB#5034628

| HOOD NO | TAG | MODEL | MANUFACTURER | LENGTH | MAX COOKING TEMP | TYPE | APPLIANCE DUTY | DESIGN CFM/FT | TOTAL EXH CFM | EXHAUST FLOWMETER(S) | | | | | HOOD CONSTRUCTION | HOOD CONFIG END TO END | ROW | |
|---------|------|-----------|--------------|--------|------------------|------|----------------|---------------|---------------|----------------------|------|--------|------|------|-------------------|------------------------|-------|-------|
| | | | | | | | | | | WIDTH | LENG | HEIGHT | DIA | CFM | | | | VEL |
| 1 | H-1A | 4824 ND-2 | CAPTIVEAIRE | 6' 10" | 450 DEG | I | MEDIUM | 189 | 1292 | 10" | 12" | 4" | 1292 | 1550 | -0.730" | 430 SS WHERE EXPOSED | ALDNE | FRONT |
| 2 | H-1B | 4824 ND-2 | CAPTIVEAIRE | 6' 10" | 450 DEG | I | MEDIUM | 189 | 1292 | 10" | 12" | 4" | 1292 | 1550 | -0.730" | 430 SS WHERE EXPOSED | ALDNE | BACK |
| 3 | H2 | 5424 ND-2 | CAPTIVEAIRE | 5' 0" | 450 DEG | I | MEDIUM | 155 | 775 | 9" | 8" | 4" | 775 | 1550 | -0.470" | 430 SS WHERE EXPOSED | ALDNE | ALDNE |

PATENT NUMBERS
EXHAUST HOODS ND-2/BD-2/SND-2 (CANADA) - CA PATENT 2520435 C.

HOOD INFORMATION

| HOOD NO | TAG | TYPE | FILTER(S) | | LIGHTS | | WIRE GUARD | | LOCATION | | UTILITY CABINETS | | FIRE SYSTEM PIPING | HOOD SYSTEM HANGING WEIGHT | |
|---------|------|-----------------------|-----------|--------|--------|------------------------|------------|----------------|----------|------|------------------|----------|--------------------|----------------------------|---------|
| | | | QTY | HEIGHT | LENGTH | EFFICIENCY @ 7 MICRONS | QTY | TYPE | TYPE | SIZE | TYPE | SIZE | | | MODEL # |
| 1 | H-1A | CAPTRATE SOLID FILTER | 5 | 16" | 16" | 85% SEE FILTER SPEC | 2 | RECESSED ROUND | ND | | | | ND | 321 LBS | |
| 2 | H-1B | CAPTRATE SOLID FILTER | 5 | 16" | 16" | 85% SEE FILTER SPEC | 2 | RECESSED ROUND | ND | | | | ND | 321 LBS | |
| 3 | H2 | CAPTRATE SOLID FILTER | 3 | 16" | 16" | 85% SEE FILTER SPEC | 2 | RECESSED ROUND | ND | LEFT | 12"x54"x24" | DCV-2011 | 1 LIGHT 1 FAN | ND | 411 LBS |

HOOD OPTIONS

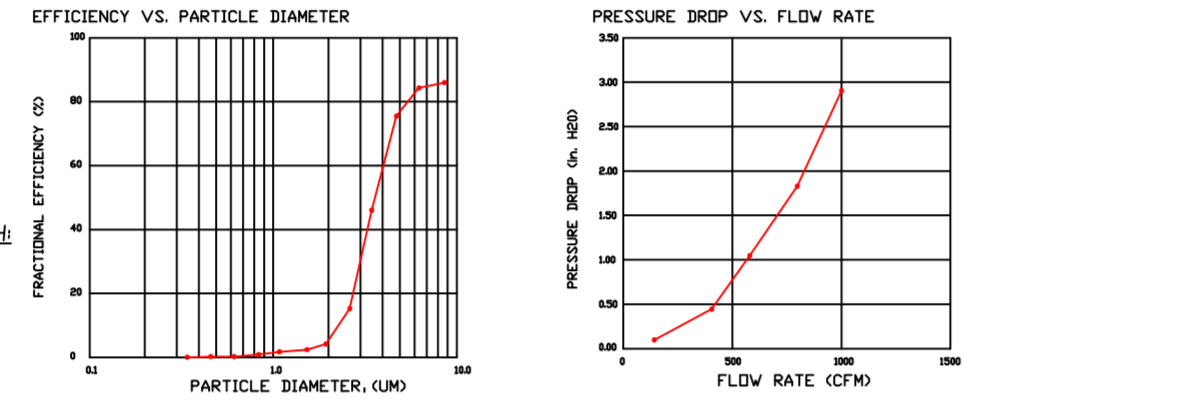
| HOOD NO | TAG | OPTION |
|---------|------|--|
| 1 | H-1A | FIELD WRAPPER 9'00" HIGH FRONT, LEFT, RIGHT. |
| 2 | H-1B | FIELD WRAPPER 9'00" HIGH FRONT, LEFT, RIGHT. |
| 3 | H2 | RIGHT END PANEL 27" TOP WIDTH, 24" BOTTOM WIDTH, 39.5" HIGH 430 SS. LEFT QUARTER END PANEL 23" TOP WIDTH, 0" BOTTOM WIDTH, 23" HIGH 430 SS. |

SPECIFICATION: CAPTRATE® GREASE-STOP® SOLID FILTER

THE CAPTRATE GREASE-STOP SOLID FILTER IS A SINGLE-STAGE FILTER FEATURING A UNIQUE S-BAFFLE DESIGN IN CONJUNCTION WITH A SLOTTED REAR BAFFLE DESIGN TO DELIVER EXCEPTIONAL FILTRATION EFFICIENCY. FILTER IS STAINLESS STEEL CONSTRUCTION, AND SIZED TO FIT INTO STANDARD 2-INCH DEEP HOOD CHANNELS.

UNITS SHALL INCLUDE STAINLESS STEEL HANDLES AND A FASTENING DEVICE TO SECURE THE TWO COMPONENTS WHEN ASSEMBLED.

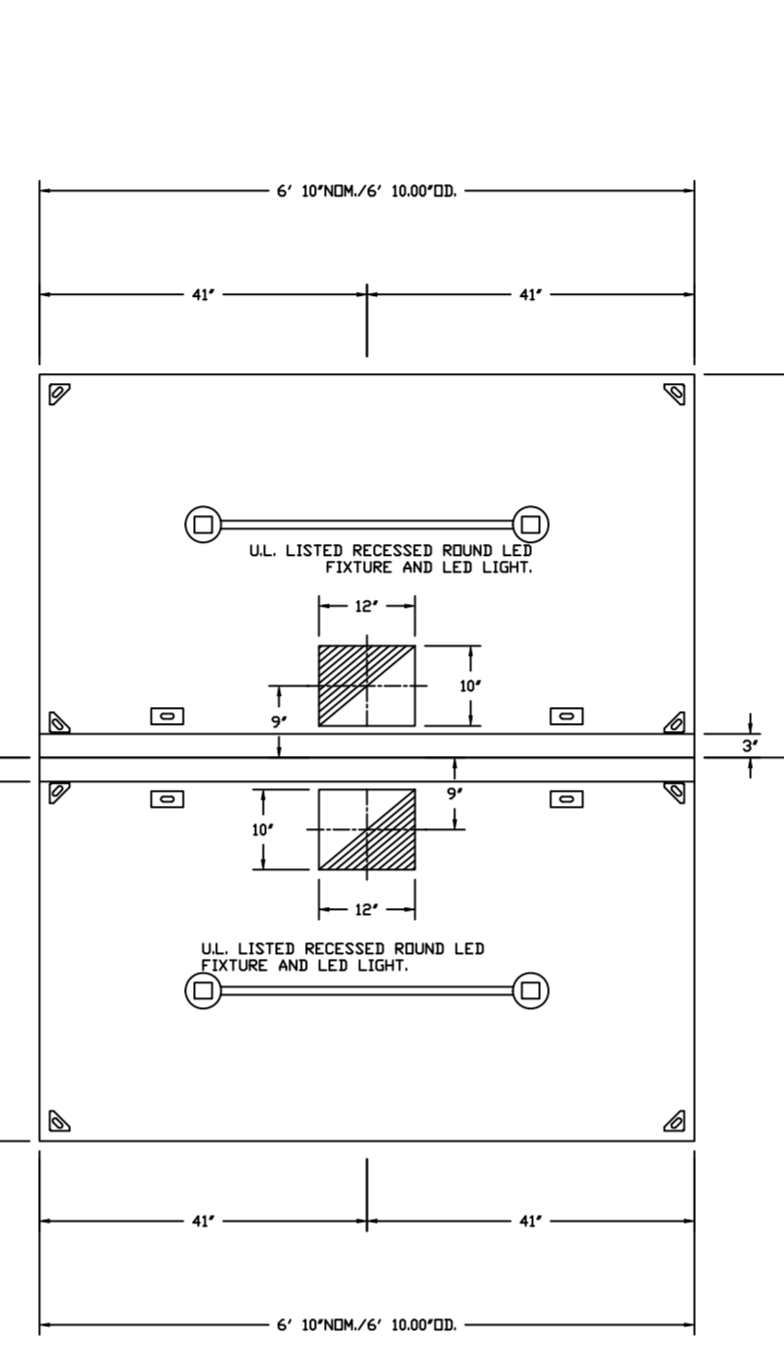
GREASE EXTRACTION EFFICIENCY PERFORMANCE SHALL REMOVE AT LEAST 75% OF GREASE PARTICLES FIVE MICRONS IN SIZE, AND 85% GREASE PARTICLES SEVEN MICRONS IN SIZE AND LARGER, WITH A CORRESPONDING PRESSURE DROP NOT TO EXCEED 1.0 INCHES" OF WATER GAUGE. THE CAPTRATE GREASE-STOP SOLID WAS TESTED TO ASTM STANDARD ASTM F2819-05. MANUFACTURER APPROVED FOR USE IN SOLID FUEL APPLICATIONS AS A SPARK ARRESTER. EFFICIENCY VS. PARTICLE DIAMETER



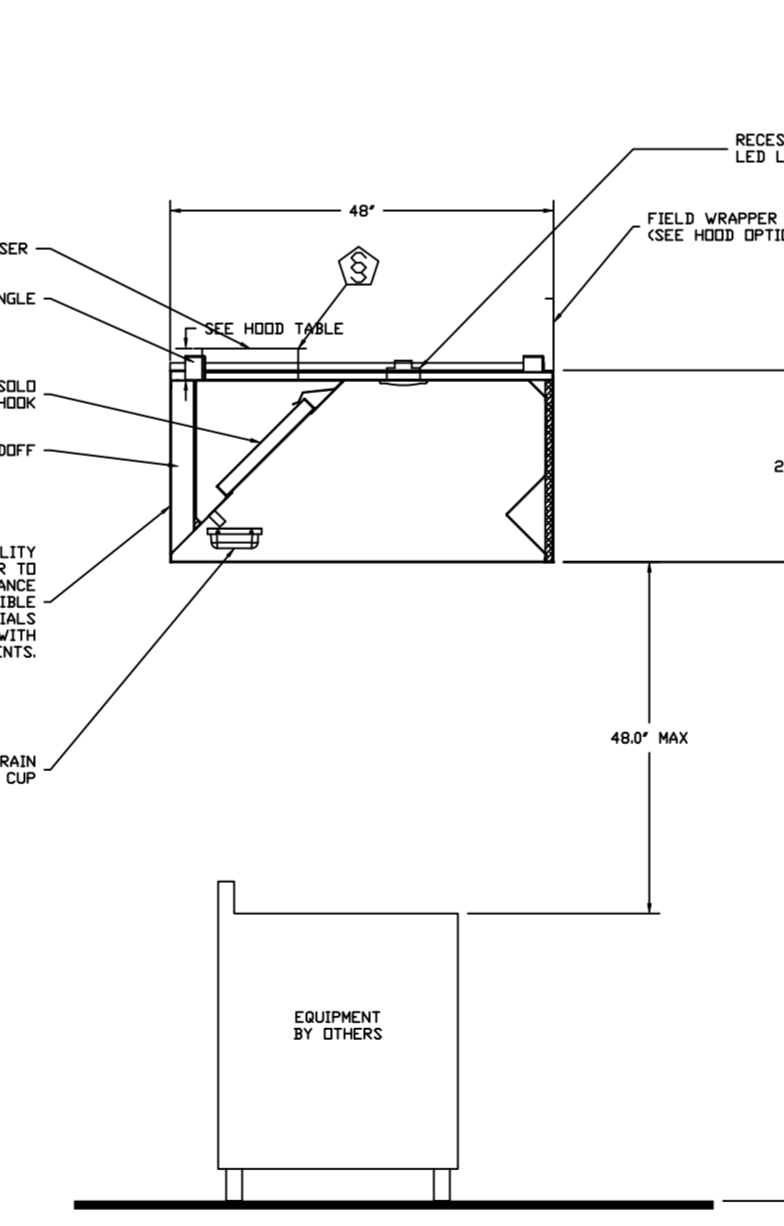
CAPTRATE FILTERS ARE BUILT IN COMPLIANCE WITH:

- NFPA #96.
- NSF STANDARD #2.
- UL STANDARD #1046.
- INT. MECH. CODE (IMC).
- ULC-S649.

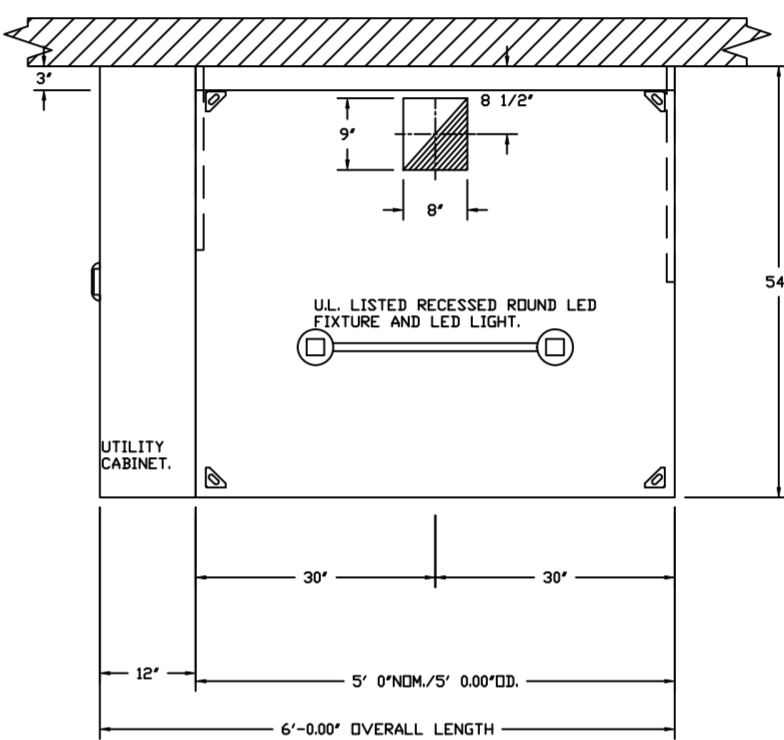
PLAN VIEW - HOOD #2 (H-1B)
6' 10.00" LONG 4824ND-2



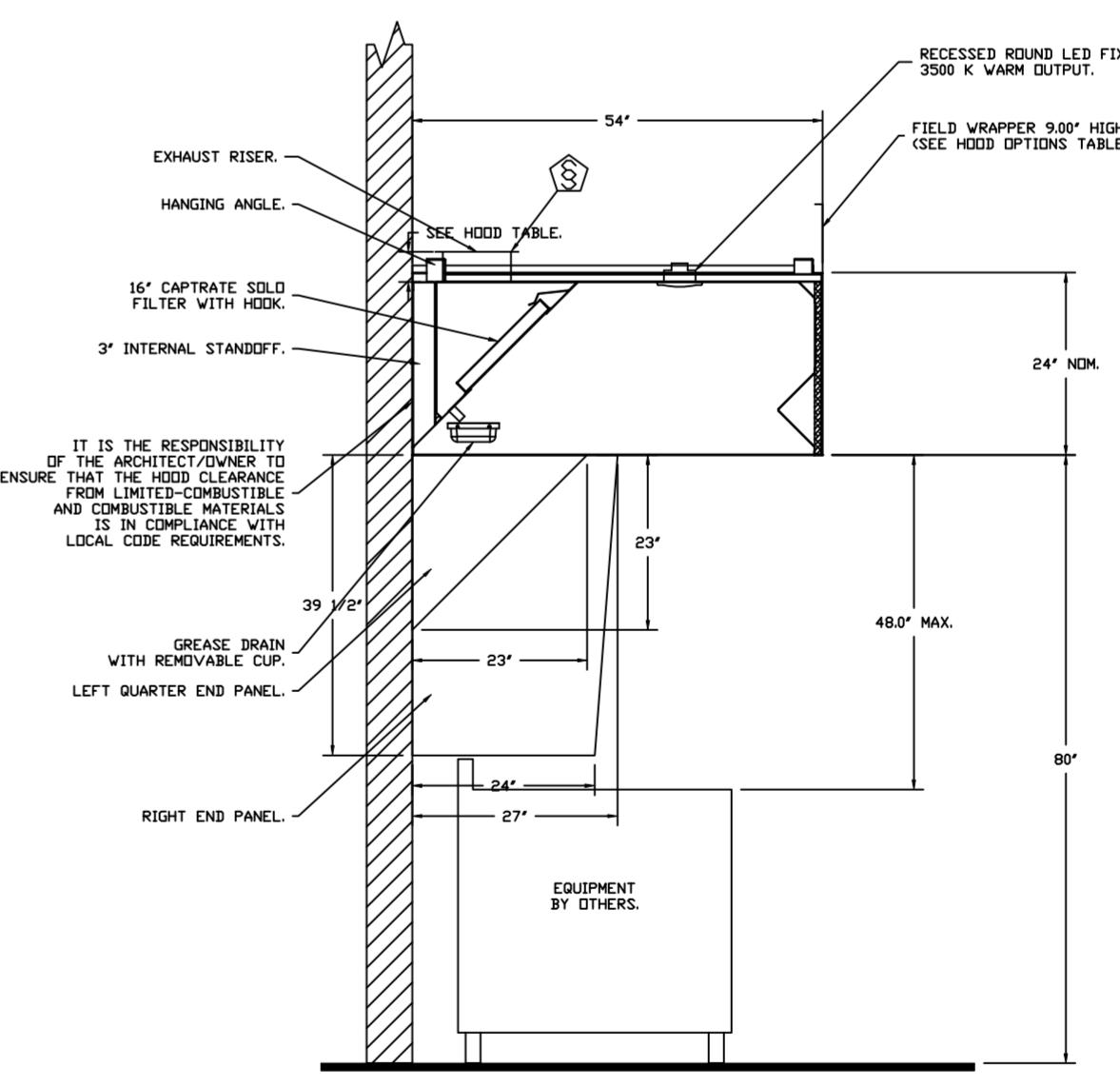
PLAN VIEW - HOOD #1 (H-1A)
6' 10.00" LONG 4824ND-2



SECTION VIEW - MODEL 4824ND-2
HOOD - #1 (H-1A)



PLAN VIEW - HOOD #3 (H2)
5' 0.00" LONG 5424ND-2



SECTION VIEW - MODEL 5424ND-2
HOOD - #3 (H2)

FOR QUESTIONS, CALL THE:
KANSAS CITY REGIONAL OFFICE
1126 SWIFT STREET, KANSAS CITY, MO 64116
PHONE: (816) 221-8575
FAX: (816) 221-8311

CUSTOMER APPROVAL TO MANUFACTURE:

Approved as Noted
Approved with NO Exception Taken
Revise and Resubmit
SIGNATURE _____ Date _____
Your Title _____

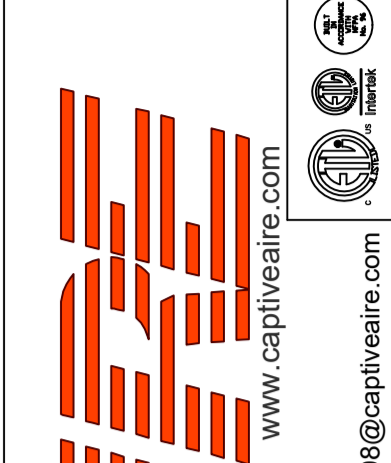
***** NOTE *****
ALL WALLS AND STRUCTURES THAT COME WITHIN 18" OF HOOD MUST BE METAL STUDS AND SHEETROCK. WOOD STUDS OR ANY OTHER COMBUSTIBLE MATERIAL WITHIN 18" OF HOOD NO ALLOWED.

***** NOTE *****
HOOD MANUFACTURER RECOMMENDS NO RETURNS WITHIN 18" OF HOOD MUST BE METAL STUDS AND SHEETROCK. WOOD STUDS OR ANY OTHER COMBUSTIBLE MATERIAL WITHIN 18" OF HOOD IN ALL DIRECTION.

***** NOTE *****
MAKEUP AIR SHALL BE DELIVERED INTO SPACE IN MANNER THAT WILL NOT DISRUPT HOODS ABILITY TO CAPTURE AND CONTAIN.

REVISIONS

| DESCRIPTION | DATE: |
|-------------|-------|
| | |
| | |
| | |
| | |



CAPTIVEAIRE
www.captiveaire.com
HBT Foodservice
101 W 8th St Suite 204, Kansas City, MO. 64105 PHONE: (816) 221-8575 FAX: (816) 221-8311 EMAIL: reg9@captivair.com

Freddy's - Tomball, TX (DOAS)
TOMBALL, TX, 77375

DATE: 8/11/2021

DWG.#:
5034628

DRAWN BY: michael.co

SCALE:
1/2" = 1'-0"

MASTER DRAWING

SHEET NO.
1

EXHAUST FAN INFORMATION - JOB#5034628

| FAN UNIT NO | TAG | QTY | FAN UNIT MODEL # | MANUFACTURER | CFM | ESP | RPM | MOTOR ENCL | HP | BHP | PHASE | VOLT | FLA | DISCHARGE VELOCITY | WEIGHT (LBS) | SDNES |
|-------------|-------|-----|------------------|--------------|------|-------|------|--------------|-------|--------|-------|------|-----|--------------------|--------------|-------|
| 1 | KEF-1 | 1 | DUB0HFA | CAPTIVEAIRE | 2584 | 1.800 | 1327 | DIP, PREMIUM | 3.000 | 1.6120 | 3 | 208 | 9.5 | 597 FPM | 208 | 18.3 |
| 2 | KEF-2 | 1 | DJ50HFA | CAPTIVEAIRE | 775 | 1.000 | 1435 | TEAD-ECM | 0.500 | 0.3040 | 1 | 208 | 3.8 | 295 FPM | 99 | 14.6 |

DOAS/RTU FAN SCHEDULE - JOB#5034628

| FAN UNIT NO | TAG | QTY | DOAS/RTU MODEL # | MANUFACTURER | BLOWER | RETURN AIR CFM | MAX OUTSIDE AIR CFM | TOTAL CFM | ESP | HP | BHP | PHASE | VOLT | MCA | MDCP | WEIGHT (LBS) |
|-------------|--------|-----|--------------------------|--------------|--------|----------------|---------------------|-----------|-------|-------|--------|-------|------|-------|------|--------------|
| 3 | DDAS-1 | 1 | CASRTU3-1250-15-20T-DDAS | CAPTIVEAIRE | 15P-3 | 0 | 2850 | 2850 | 0.500 | 2.000 | 1.6860 | 3 | 208 | 76.44 | 80A | 2568 |

DOAS/RTU COOLING SCHEDULE

| FAN UNIT NO | TAG | COMPRESSOR | | | OUTDOOR FAN | | | INDOOR COIL | | OUTSIDE AIR DB TEMP | OUTSIDE AIR WB TEMP | MIXED AIR DB TEMP | MIXED AIR WB TEMP | LEAVING DB TEMP | LEAVING WB TEMP | TOTAL CAPACITY | SENSIBLE CAPACITY | LATENT CAPACITY | REHEAT LEAVING DB TEMP | REHEAT LEAVING WB TEMP | DESIRED REHEAT CAPACITY | MAX REHEAT CAPACITY | REHEAT RELATIVE HUMIDITY | MOISTURE REMOVAL RATE | IEER | | |
|-------------|--------|------------|---------|-------|---------------|---------|-----------------|-------------|------|---------------------|---------------------|-------------------|-------------------|-----------------|-----------------|----------------|-------------------|-----------------|------------------------|------------------------|-------------------------|---------------------|--------------------------|-----------------------|------|--------------|------|
| | | TONNAGE | VOLTAGE | PHASE | MOTOR VOLTAGE | MOTOR Ø | MOTOR FREQUENCY | MOTOR QTY | ROWS | | | | | | | | | | | | | | | | | FACE AREA | |
| 3 | DDAS-1 | 20 | 190-240 | 3 | 200-240 | 3 | 60 | 3 | 7 | 11.9 SQFT | 82.6°F | 79.9°F | 82.6°F | 79.9°F | 55.8°F | 53.3°F | 51.5°F | 264.0 MBH | 82.1 MBH | 181.9 MBH | 70.0°F | 58.9°F | 45 MBH | 129.6 MBH | 52 | 163.4 LBS/HR | 18.2 |

DOAS/RTU HEATING SCHEDULE

| FAN UNIT NO | TAG | INPUT BTUS | OUTPUT BTUS | TEMP RISE | REQUIRED INPUT GAS PRESSURE | GAS TYPE | BURNER EFFICIENCY(%) |
|-------------|--------|------------|-------------|-----------|-----------------------------|----------|----------------------|
| 3 | DDAS-1 | 208884 | 167107 | 51°F | 7 IN. W.C. - 14 IN. W.C. | NATURAL | 80 |

FAN OPTIONS

| FAN UNIT NO | TAG | QTY | DESCRIPTION |
|-------------|---|-----|--|
| 1 | KEF-1 | 1 | GREASE BOX. |
| | | 1 | 24" TALL STRAIGHT WIND BAND EXTENSION 18/20 (SHIPS LOOSE). |
| 2 | KEF-2 | 1 | GREASE BOX. |
| | | 1 | 36" TALL STRAIGHT WIND BAND EXTENSION 13 (SHIPS LOOSE). |
| 3 | DDAS-1 | 1 | ECM WIRING PACKAGE - PWM SIGNAL FROM ECM#3 PREWIRE (TELCD MOTOR), CCV ROTATION. |
| | | 1 | 2 YEAR PARTS WARRANTY. |
| | | 1 | INLET PRESSURE GAUGE, 0-25". |
| | | 1 | MANIFOLD PRESSURE GAUGE, 0 TO 10" W.C., 1 FURNACE. |
| | | 1 | TOTAL CFM MONITORING FOR DOAS. |
| | | 1 | SINGLE POINT ELECTRICAL CONNECTION FOR RTU. QNTY 1 750VA TRANSFORMER USED. IF A NON-DCV PREWIRE CONTROLS THIS UNIT, THE WBR #47, "M", OR "E2" OPTION PREWIRE MUST BE SELECTED. DO NOT PROVIDE SUPPLY STARTER IN PREWIRE. |
| | | 1 | CASLINK BUILDING MONITORING SYSTEM - INTERNET OR CELLULAR CONNECTION REQUIRED. |
| | | 1 | RTU SIZE 3 DOWN DISCHARGE. |
| | | 1 | 2" MERV 13 FILTERS FOR SIZE 3 RTU. QTY 4. |
| | | 1 | 2" MERV 8 FILTERS FOR SIZE 3 RTU. QTY 4. |
| | | 1 | OVERHEAT STAT. |
| | | 1 | VFD FACTORY MOUNTED AND WIRED IN COMMERCIAL CONTROL VESTIBULE FOR RTU. |
| | | 1 | COMMERCIAL SMOKE DETECTOR/ALARM INTERLOCK (SUPPLIED BY OTHERS). |
| | | 1 | OCCUPIED SCHEDULING. |
| | | 1 | SIZE 3 RTU CURB DUCT HANGER. |
| 1 | CLOGGED FILTER SWITCH WITH NOTIFICATION DN HMI. | | |
| 1 | 20 TON MODULATING COOLING OPTION, 208/230V, R410A REFRIGERANT, VARIABLE SPEED COMPRESSOR, ECM CONDENSING FAN(S). | | |
| 1 | 20 TON MODULATING REHEAT OPTION, SPACE DEWPOINT CONTROL. | | |
| 1 | RTU SCHEDULED OA PERCENTAGE INTAKE/RETURN DAMPER CONTROL. | | |
| 1 | RTU 3 HAIL GUARD. | | |
| 1 | RTU SIZE 3 DOWN RETURN. | | |
| 1 | FREESTAT. | | |
| 1 | VAV PACKAGE W/ 0-10VDC INPUT CONTROL (S71 VFD INCLUDED). | | |
| 1 | 5 YEAR ENTIRE UNIT PARTS WARRANTY, 10 YEAR ENTIRE UNIT PARTS WARRANTY WITH REMOTE MONITORING AND CAPTIVEAIRE SERVICE CONTRACT, 25 YEAR STAINLESS STEEL FURNACE PARTS WARRANTY (SEE ADDITIONAL DETAILS). | | |

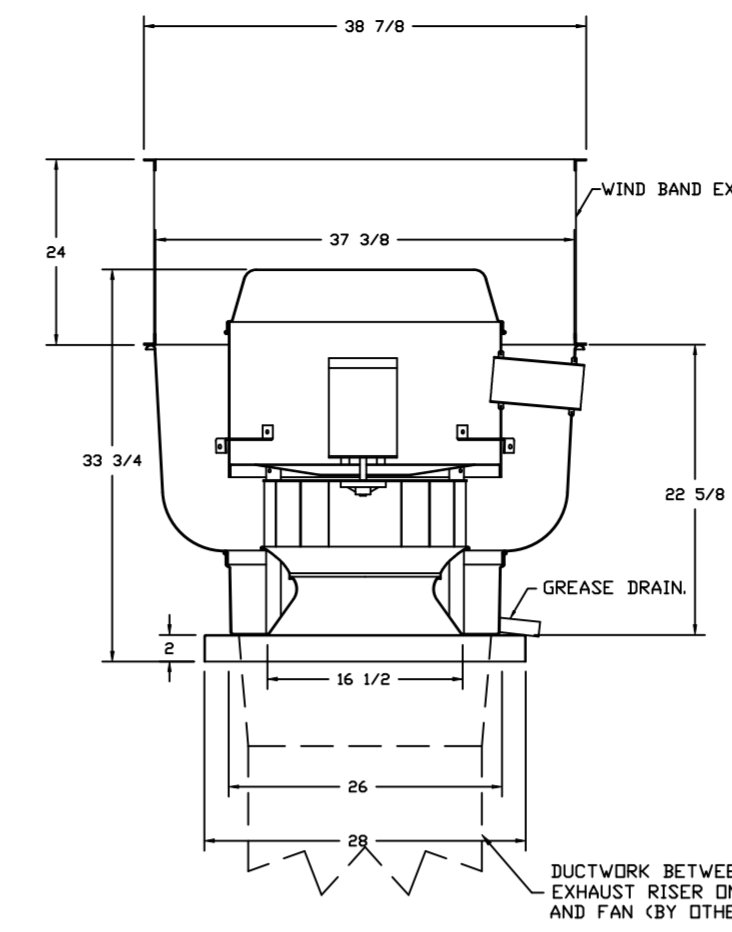
FAN ACCESSORIES

| FAN UNIT NO | TAG | EXHAUST | | | | SUPPLY | | | | | |
|-------------|-------|------------|----------------|------------|----------------|----------------|------------------|------------|--|--|--|
| | | GREASE CUP | GRAVITY DAMPER | WALL MOUNT | SIDE DISCHARGE | GRAVITY DAMPER | MOTORIZED DAMPER | WALL MOUNT | | | |
| 1 | KEF-1 | YES | | | | | | | | | |
| 2 | KEF-2 | YES | | | | | | | | | |

CURB ASSEMBLIES

| NO | DN | FAN | TAG | WEIGHT | ITEM | SIZE |
|----|-----|--------|--------|--------|---|------|
| 1 | # 1 | KEF-1 | 38 LBS | CURB | 26.500"W X 26.500"L X 24.000"H ALONG LENGTH, RIGHT VENTED HINGED. | |
| 2 | # 2 | KEF-2 | 34 LBS | CURB | 19.500"W X 19.500"L X 24.000"H ALONG LENGTH, RIGHT VENTED HINGED. | |
| 3 | # 3 | DDAS-1 | 78 LBS | CURB | 59.500"W X 91.000"L X 14.000"H ALONG WIDTH, RIGHT INSULATED. | |

FAN #1 DUB0HFA - EXHAUST FAN (KEF-1)



TOP VIEW

FEATURES:

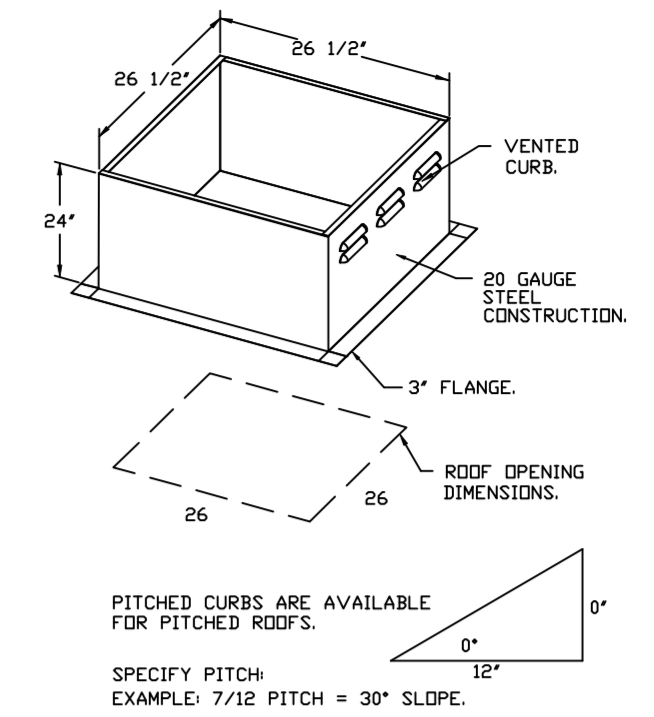
- DIRECT DRIVE CONSTRUCTION (NO BELTS/PULLEYS).
- ROOF MOUNTED FANS.
- RESTAURANT MODEL.
- UL705 AND UL762 AND UL-C-5645
- VARIABLE SPEED CONTROL.
- INTERNAL WIRING.
- THERMAL OVERLOAD PROTECTION (SINGLE PHASE).
- HIGH HEAT OPERATION 300°F (149°C).
- GREASE CLASSIFICATION TESTING.
- NEMA 3R SAFETY DISCONNECT SWITCH.

NORMAL TEMPERATURE TEST
EXHAUST FAN MUST OPERATE CONTINUOUSLY WHILE EXHAUSTING BURNING GREASE VAPORS AT 600°F (316°C) FOR A PERIOD OF 15 MINUTES WITHOUT THE FAN BECOMING DAMAGED TO ANY EXTENT THAT COULD CAUSE AN UNSAFE OPERATION.

ABNORMAL FLARE-UP TEST
EXHAUST FAN MUST OPERATE CONTINUOUSLY WHILE EXHAUSTING BURNING GREASE VAPORS AT 600°F (316°C) FOR A PERIOD OF 15 MINUTES WITHOUT THE FAN BECOMING DAMAGED TO ANY EXTENT THAT COULD CAUSE AN UNSAFE CONDITION.

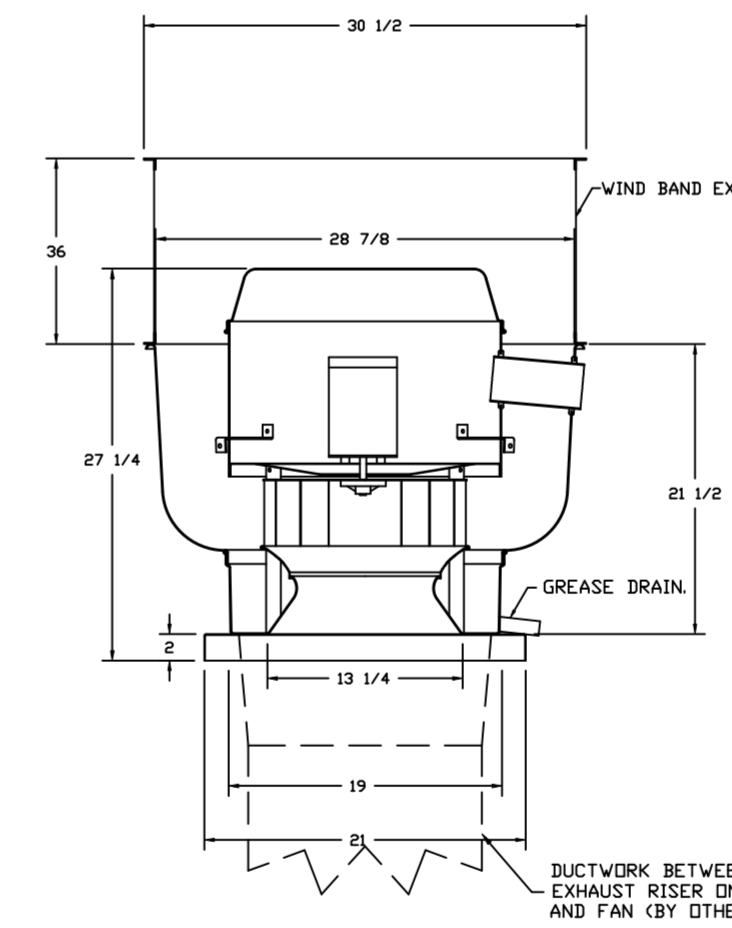
DETAILS

GREASE BOX.
36" TALL STRAIGHT WIND BAND EXTENSION 18/20 (SHIPS LOOSE).
2 YEAR PARTS WARRANTY.



PITCHED CURBS ARE AVAILABLE FOR PITCHED ROOFS.
SPECIFY PITCH
EXAMPLE: 7/12 PITCH = 30° SLOPE.

FAN #2 DJ50HFA - EXHAUST FAN (KEF-2)



TOP VIEW

FEATURES:

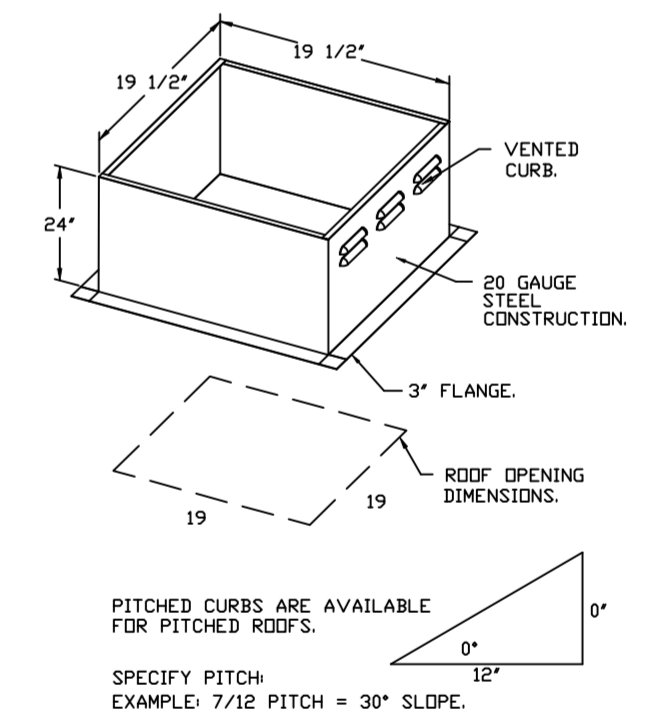
- DIRECT DRIVE CONSTRUCTION (NO BELTS/PULLEYS).
- ROOF MOUNTED FANS.
- RESTAURANT MODEL.
- UL705 AND UL762 AND UL-C-5645
- VARIABLE SPEED CONTROL.
- INTERNAL WIRING.
- THERMAL OVERLOAD PROTECTION (SINGLE PHASE).
- HIGH HEAT OPERATION 300°F (149°C).
- GREASE CLASSIFICATION TESTING.
- NEMA 3R SAFETY DISCONNECT SWITCH.

NORMAL TEMPERATURE TEST
EXHAUST FAN MUST OPERATE CONTINUOUSLY WHILE EXHAUSTING BURNING GREASE VAPORS AT 600°F (316°C) FOR A PERIOD OF 15 MINUTES WITHOUT THE FAN BECOMING DAMAGED TO ANY EXTENT THAT COULD CAUSE AN UNSAFE OPERATION.

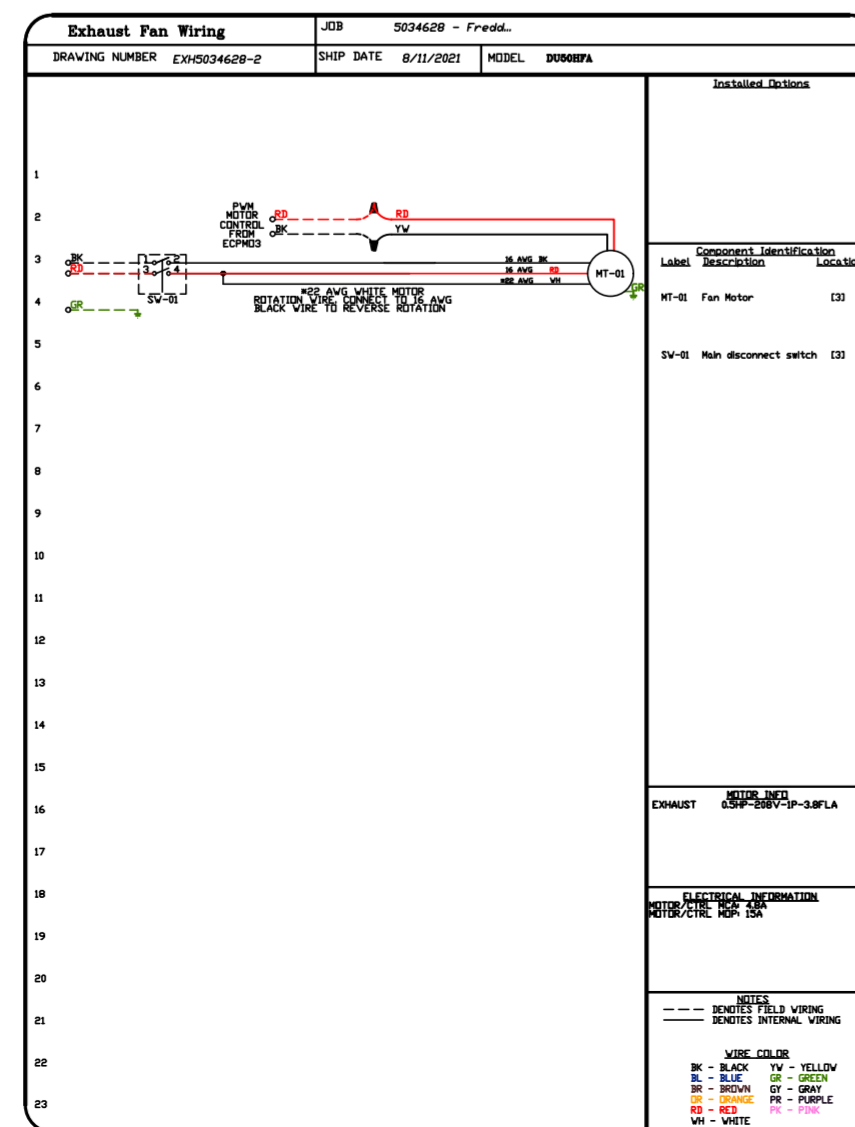
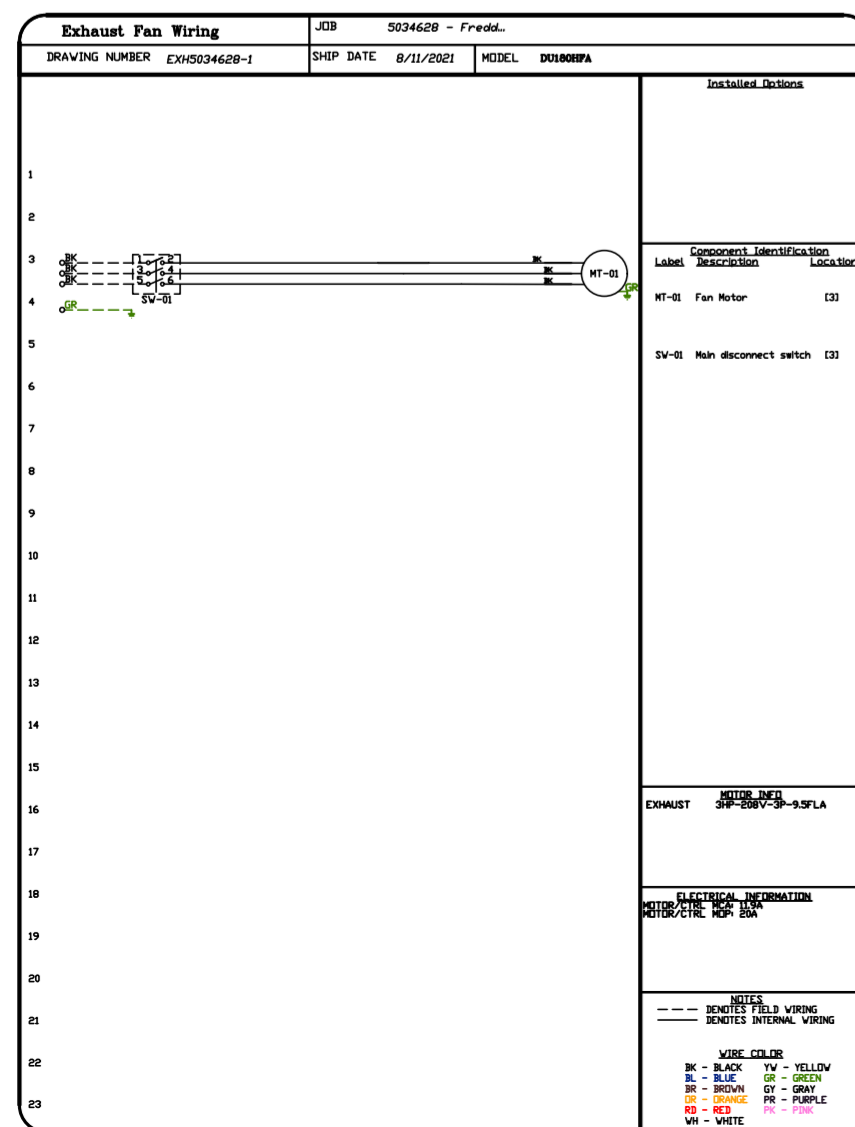
ABNORMAL FLARE-UP TEST
EXHAUST FAN MUST OPERATE CONTINUOUSLY WHILE EXHAUSTING BURNING GREASE VAPORS AT 600°F (316°C) FOR A PERIOD OF 15 MINUTES WITHOUT THE FAN BECOMING DAMAGED TO ANY EXTENT THAT COULD CAUSE AN UNSAFE CONDITION.

DETAILS

GREASE BOX.
36" TALL STRAIGHT WIND BAND EXTENSION 13 (SHIPS LOOSE).
ECM WIRING PACKAGE - PWM SIGNAL FROM ECM#3 PREWIRE (TELCD MOTOR), CCV ROTATION.
2 YEAR PARTS WARRANTY.



PITCHED CURBS ARE AVAILABLE FOR PITCHED ROOFS.
SPECIFY PITCH
EXAMPLE: 7/12 PITCH = 30° SLOPE.



REVISIONS

| NO. | DESCRIPTION | DATE |
|-----|-------------|------|
| | | |
| | | |
| | | |
| | | |

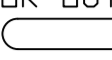
www.captiveaire.com
www.captiveaire.com

Freddy's - Tomball, TX (DOAS)
TOMBALL, TX, 77375

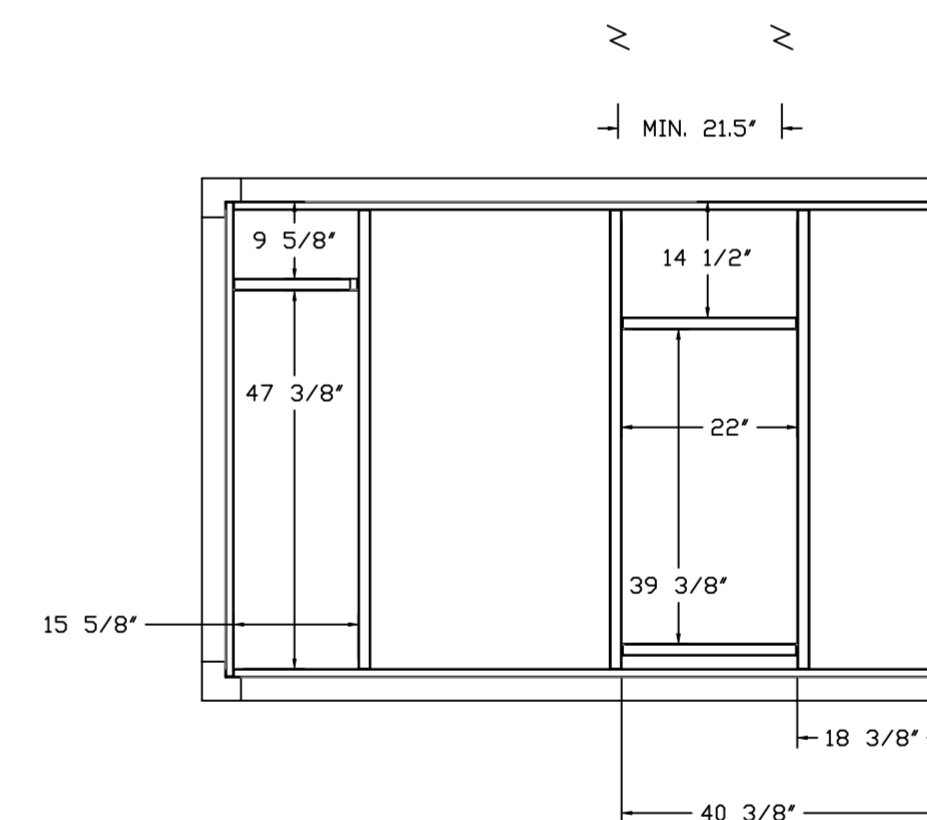
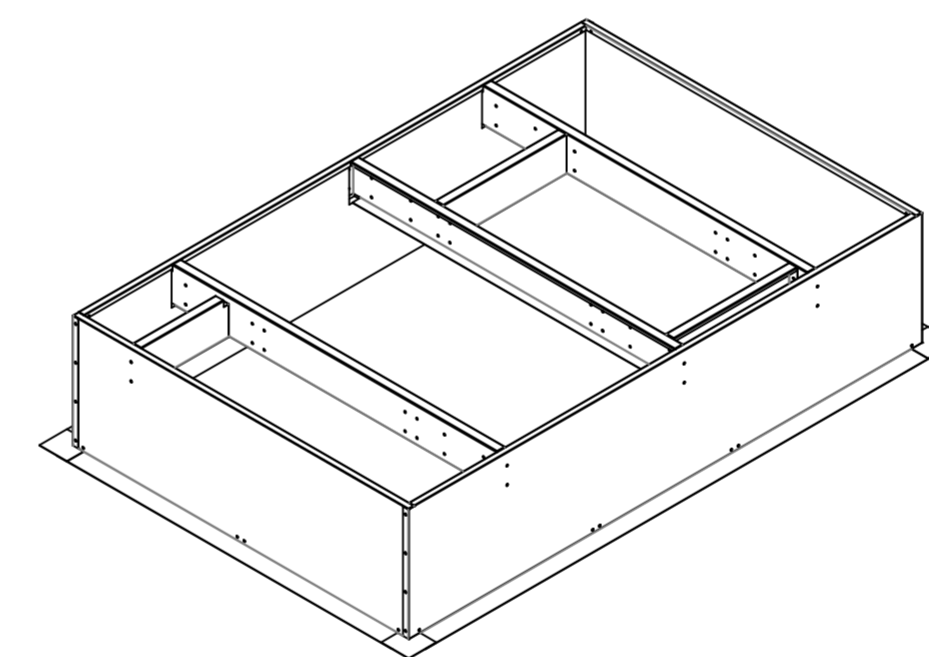
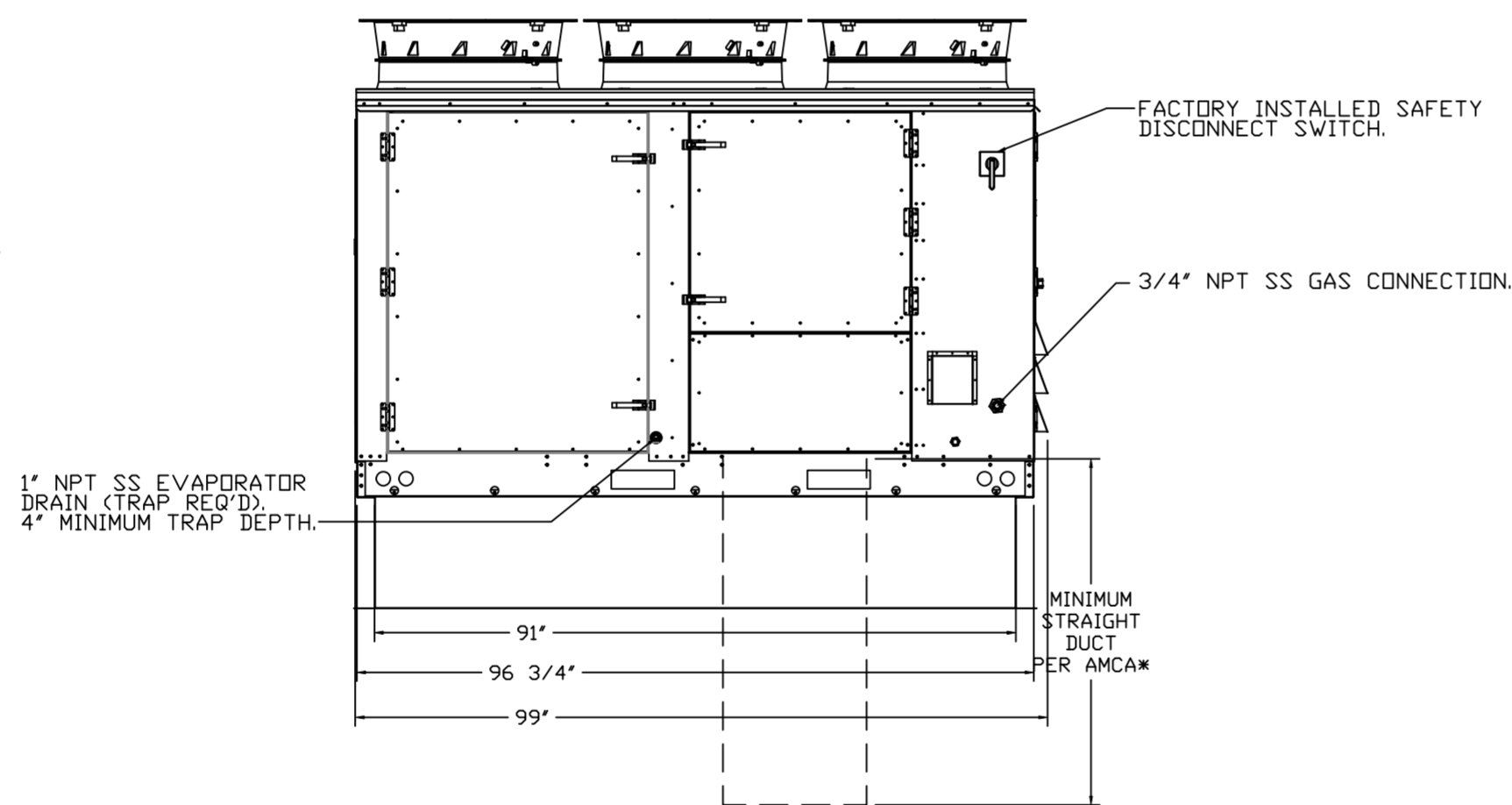
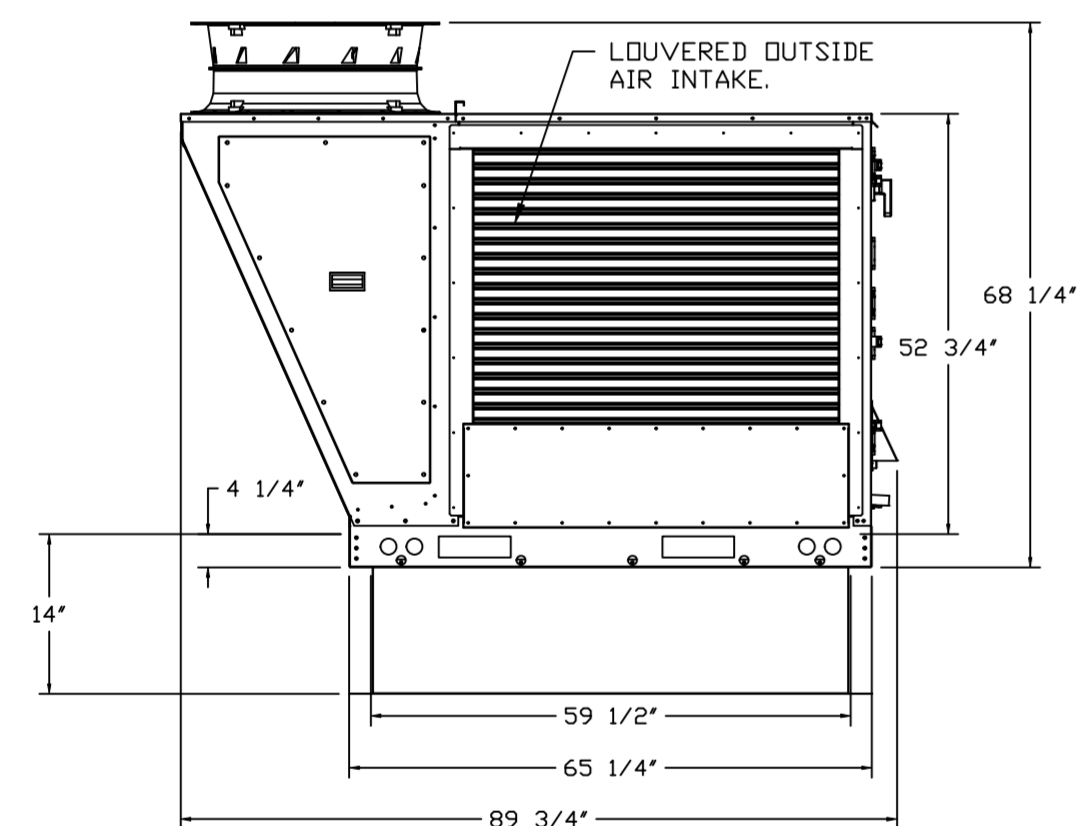
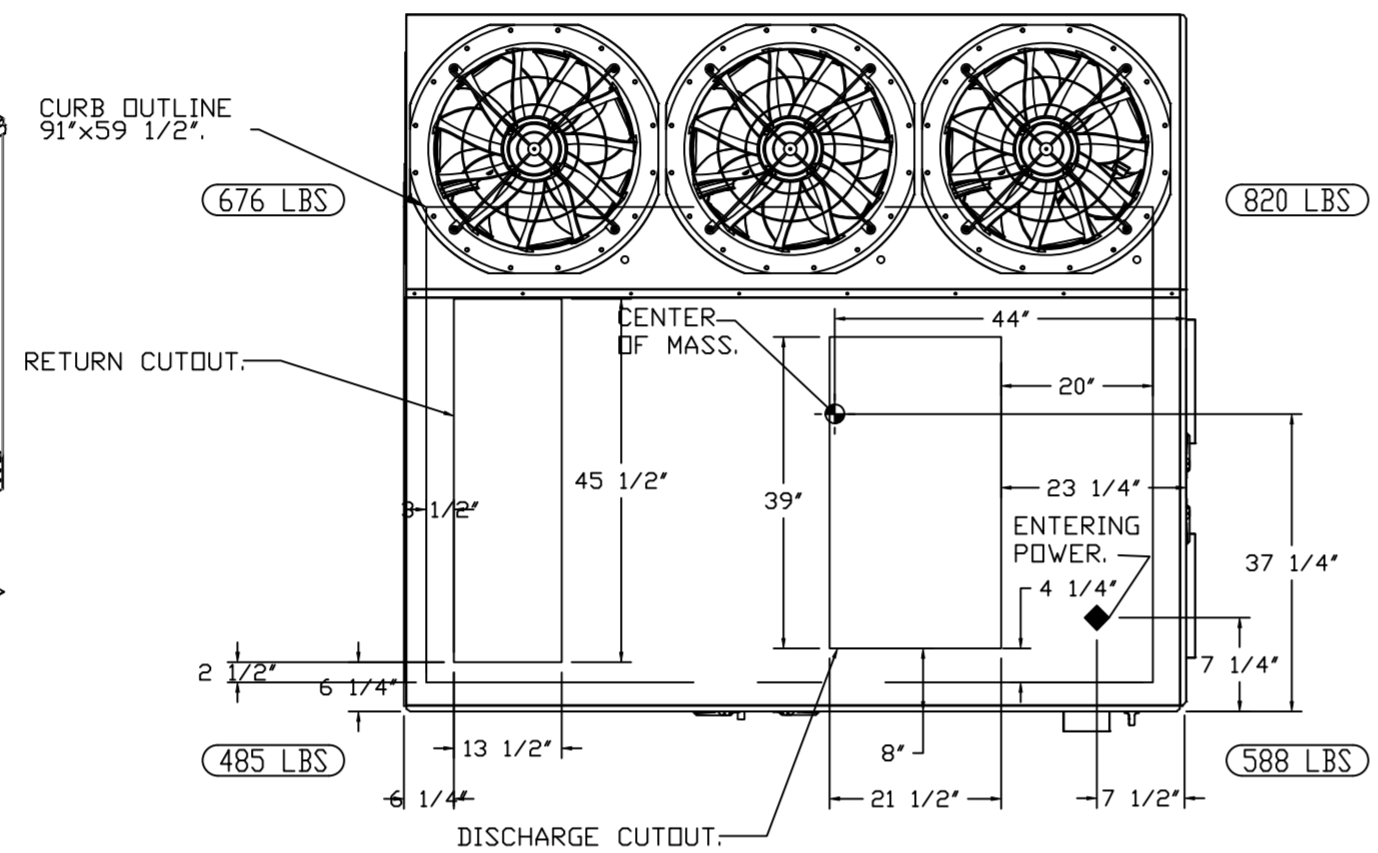
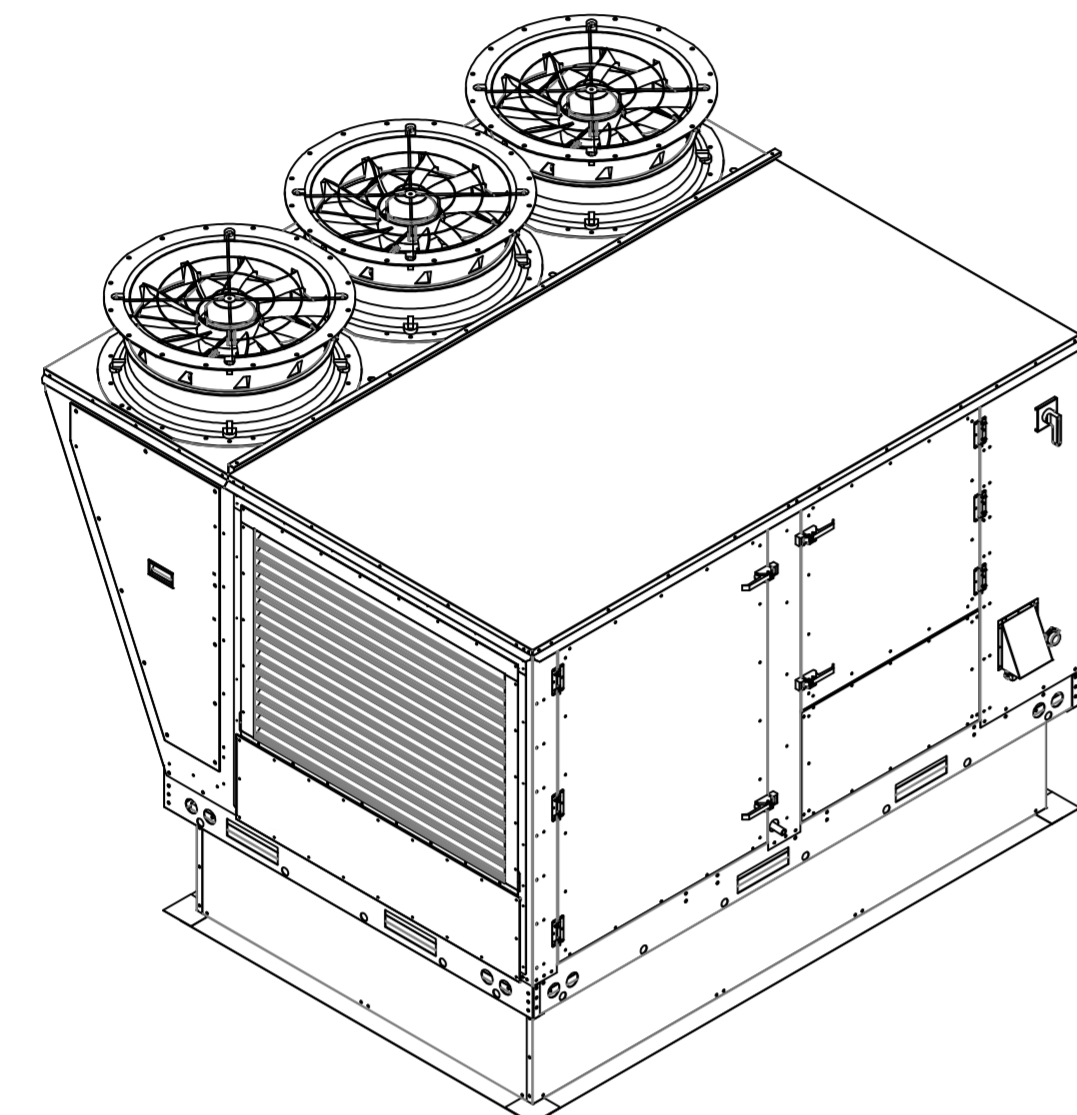
DATE: 8/11/2021
DWG.#: 5034628
DRAWN BY: michael.co
SCALE: 1/2" = 1'-0"
MASTER DRAWING

SHEET NO.
2

NOTES:

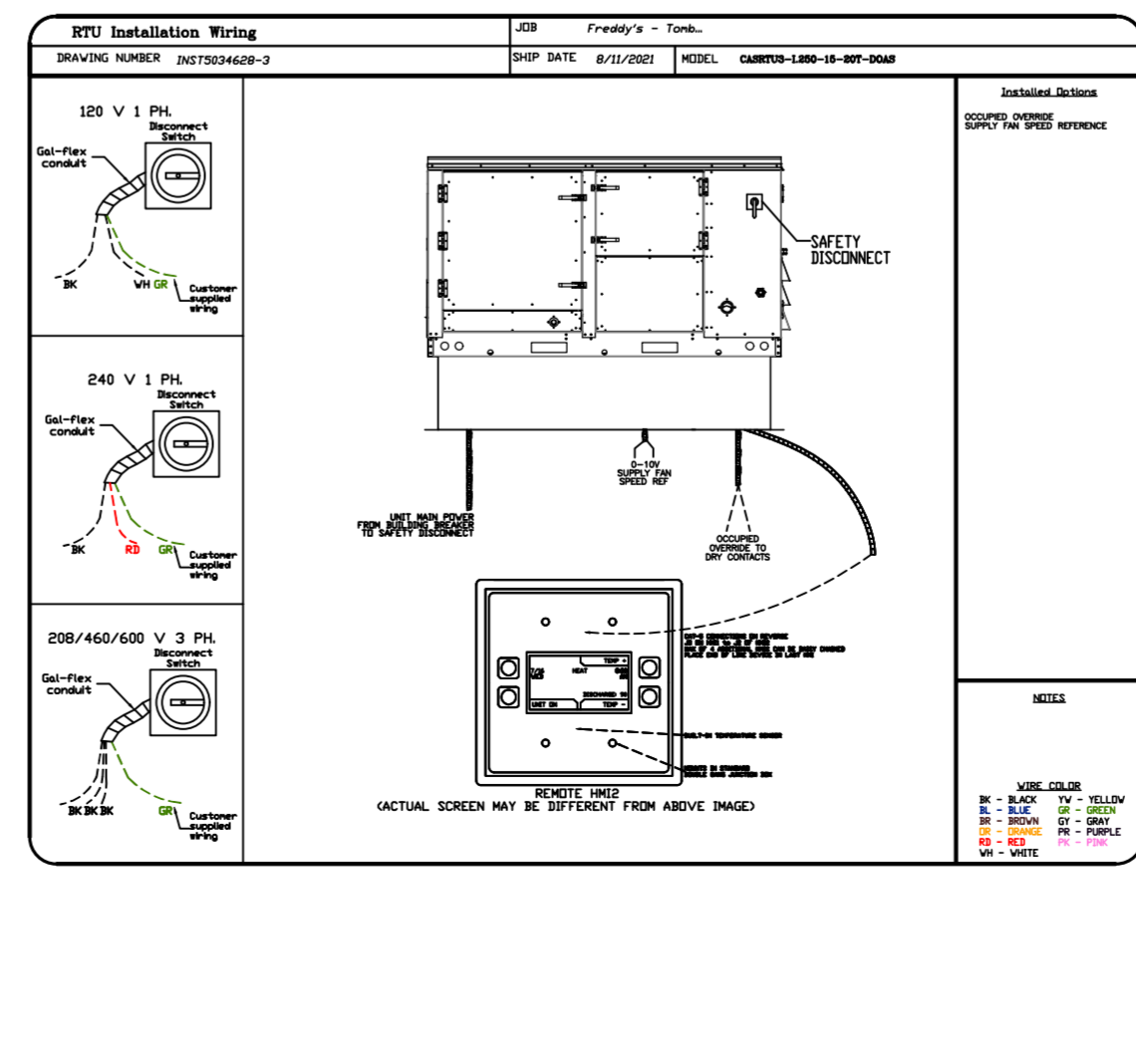
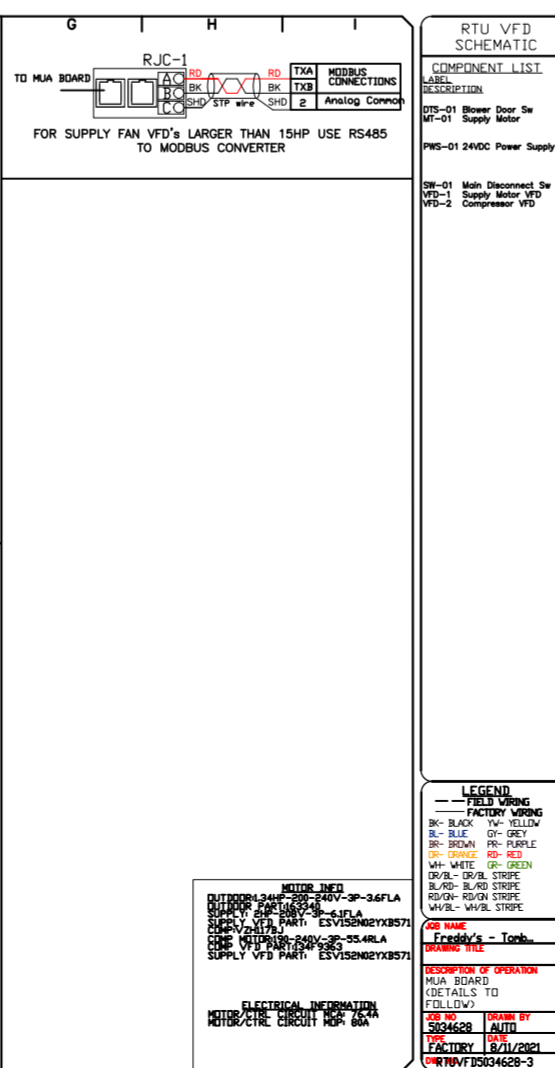
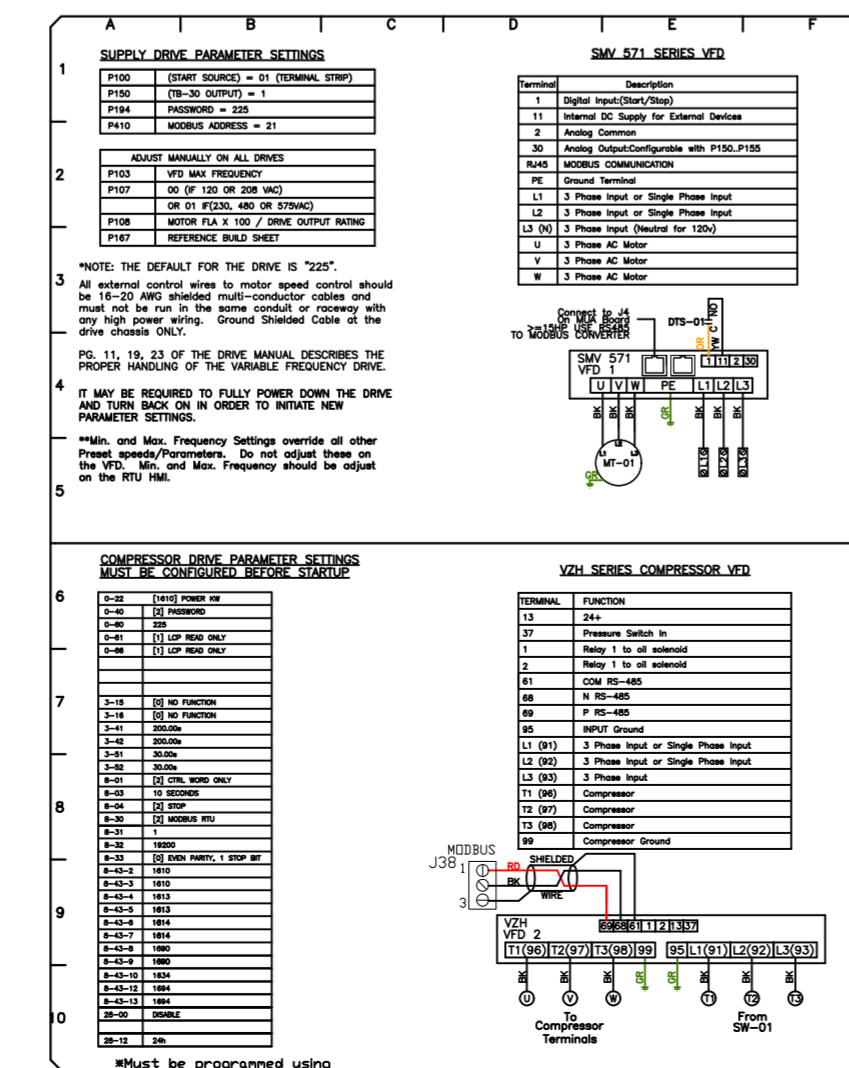
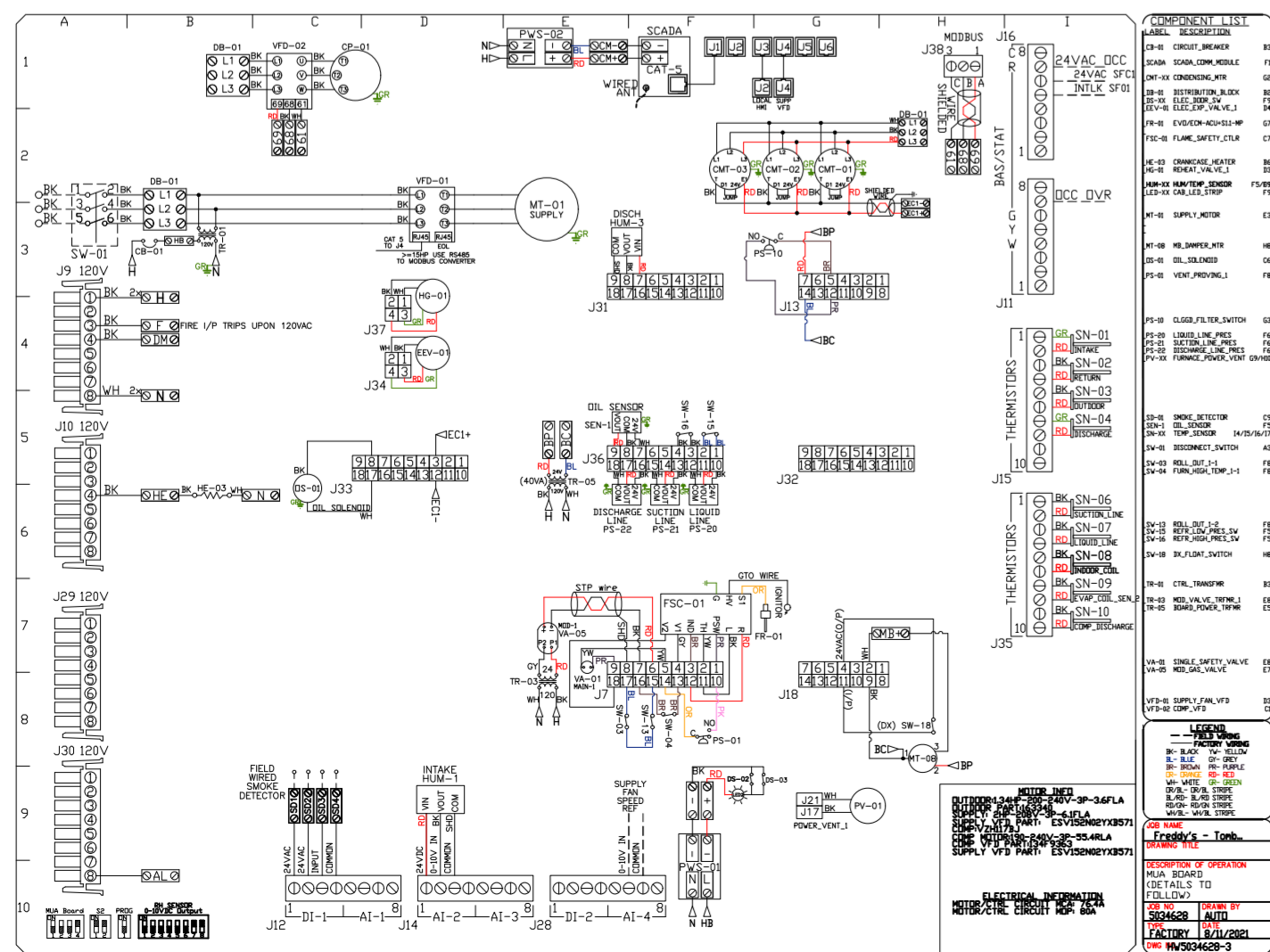
- DO NOT OBSTRUCT OUTSIDE AIR INLET, OUTSIDE AIR COIL OR OUTSIDE AIR FAN.
-  DENOTES CORNER WEIGHT.
- ROOF OPENING MUST BE 2' SMALLER THAN CURB DIMENSIONS IN BOTH DIRECTIONS.

*NOTE: SUPPLY DUCT MUST BE INSTALLED TO MEET SMACNA STANDARDS. A MINIMUM STRAIGHT DUCT LENGTH MUST BE MAINTAINED DOWNSTREAM OF UNIT DISCHARGE AS OUTLINED IN AMCA PUBLICATION 201. WHEN USING RECTANGULAR DUCTWORK, ELBOWS MUST BE RADIUS THROAT, RADIUS BACK WITH TURNING VANES. FLEXIBLE DUCTWORK AND SQUARE THROAT/SQUARE BACK ELBOWS SHOULD NOT BE USED. ANY TRANSITION AND/OR TURNS IN THE DUCTWORK WILL CAUSE SYSTEM EFFECT. SYSTEM EFFECT WILL DRASTICALLY INCREASE STATIC PRESSURE AND REDUCE AIRFLOW. DO NOT RELY ON UNIT TO SUPPORT DUCT IN ANY WAY. FAILURE TO PROPERLY SIZE DUCTWORK MAY CAUSE SYSTEM EFFECTS AND REDUCE PERFORMANCE OF THE EQUIPMENT. SUGGESTED STRAIGHT DUCT SIZE IS 21.5" x 39".



OPTIONS

- INLET PRESSURE GAUGE, 0-35".
- MANIFOLD PRESSURE GAUGE, 0 TO 10" WC, 1 FURNACE.
- TOTAL CFM MONITORING FOR DOAS.
- SINGLE POINT ELECTRICAL CONNECTION FOR RTU. QNTY 1 750VA TRANSFORMER USED. IF A NON-DCV PREWIRE CONTROLS THIS UNIT, THE #28, #47, "MA", OR "E2" OPTION PREWIRE MUST BE SELECTED. DO NOT PROVIDE SUPPLY STARTER IN PREWIRE.
- CASLINK BUILDING MONITORING SYSTEM - INTERNET OR CELLULAR CONNECTION REQUIRED.
- RTU SIZE 3 DOWN DISCHARGE.
- 2" MERV 13 FILTERS FOR SIZE 3 RTU. QTY 4.
- 2" MERV 8 FILTERS FOR SIZE 3 RTU. QTY 4.
- OVERHEAT STAT.
- VFD FACTORY MOUNTED AND WIRED IN COMMERCIAL CONTROL VESTIBULE FOR RTU.
- COMMERCIAL SMOKE DETECTOR/ALARM INTERLOCK (SUPPLIED BY OTHERS).
- OCCUPIED SCHEDULING.
- SIZE 3 RTU CURB DUCT HANGER.
- CLOGGED FILTER SWITCH WITH NOTIFICATION ON HMI.
- 20 TON MODULATING COOLING OPTION, 208/230V. R410A REFRIGERANT, VARIABLE SPEED COMPRESSOR, ECM CONDENSING FAN(S).
- 20 TON MODULATING REHEAT OPTION. SPACE DEWPOINT CONTROL.
- RTU SCHEDULED OA PERCENTAGE INTAKE/RETURN DAMPER CONTROL.
- RTU 3 HAIL GUARD.
- RTU SIZE 3 DOWN RETURN.
- FREEZE STAT.
- VAV PACKAGE W/ 0-10VDC INPUT CONTROL (571 VFD INCLUDED).
- 5 YEAR ENTIRE UNIT PARTS WARRANTY, 10 YEAR ENTIRE UNIT PARTS WARRANTY WITH REMOTE MONITORING AND CAPTIVEAIRE SERVICE CONTRACT, 25 YEAR STAINLESS STEEL FURNACE PARTS WARRANTY (SEE ADDITIONAL DETAILS).



REVISIONS

| DESCRIPTION | DATE |
|-------------|------|
| | |
| | |
| | |
| | |

CAPTIVEAIRE

www.captiveaire.com

HBT Foodservice

104 W 8th St Suite 204, Kansas City, MO, 64105 PHONE: (816) 221-8575 FAX: (816) 221-8311 EMAIL: reg9@captivair.com

Freddy's - Tomball, TX (DOAS)

TOMBALL, TX, 77375

DATE: 8/11/2021

DWG.#: 5034628

DRAWN BY: michael.co

SCALE: 1/2" = 1'-0"

MASTER DRAWING

SHEET NO. 3

