



## **SUBMITTAL**

**Project**

Torchys Tacos - 15 ton bulk order

**Date**

Tuesday, November 15, 2022

***APPROVED***

***By Matt Green at 12:56 pm, Nov 28, 2022***

## Table Of Contents

Project: Torchys Tacos - 15 ton bulk order  
Prepared By:

11/17/2022  
09:38AM

<b>RTU - 1-6</b> .....	<b>3</b>
Unit Report .....	4
Certified Drawing.....	6
Performance Summary.....	9
<b>RTU - 7-12</b> .....	<b>12</b>
Unit Report .....	13
Certified Drawing.....	15
Performance Summary.....	18

**RTU - 1-6**

**Tag Cover Sheet  
Unit Report  
Certified Drawing  
Performance Report**

## Unit Report For RTU - 1-6

Project: Torchys Tacos - 15 ton bulk order  
 Prepared By:

11/17/2022  
 09:38AM

### Unit Parameters

Unit Model:..... **48FCEN16L2M5-6W4C0**  
 Unit Size:.....**16 (15 Tons)**  
 Volts-Phase-Hertz:..... **208-3-60**  
 Heating Type:.....**Gas**  
 Heat Control:..... **Medium Heat**  
 Duct Cfg:..... **Vertical Supply / Vertical Return**  
 DX Options:**Single Circuit, Two Stage Cooling with Humidi-MiZer** .....

### Dimensions (ft. in.) & Weight (lb.) \*\*\*

Unit Length:.....**9' 7.875"**  
 Unit Width:.....**5' 6.375"**  
 Unit Height:.....**4' 9.375"**  
**Total Operating Weight:..... 1752 lb**

\*\*\* Weights and Dimensions are approximate. Weight does not include unit packaging. Approximate dimensions are provided primarily for shipping purposes. For exact dimensions and weights, refer to appropriate product data catalog.

### Lines and Filters

Gas Line Size: **3/4**  
 Condensate Drain Line Size: **3/4**  
 Return Air Filter Type: **Throwaway**  
 Return Air Filter Quantity: **6**  
 Return Air Filter Size: **18 x 24 x 2**

**Selection includes construction throwaway filter into the base fan curve. This filter is not MERV Rated.**

### Unit Configuration

Condensate Overflow Switch and RA and SA Smoke Detectors  
 Standard/Medium Static (EcoBlue)  
 Al/Cu - Al/Cu - Louvered Hail Guards  
 Electromechanical Controls w/W7220 Econo Controller  
 Enthalpy Ultra Low Leak Econo w/Baro Relief  
 Hinged Panels and Unpowered Convenience Outlet  
 Non-Fused Disconnect  
 Standard Packaging  
 Humidi-MiZer™ Adaptive Dehumidification System

### Warranty Information

1-Year parts(std.)  
 5-Year compressor parts(std.)  
 10-Year heat exchanger - Aluminized(std.)

No optional warranties were selected.

**NOTE: Please see Warranty Catalog 500-089 for explanation of policies and ordering methods.**

### Ordering Information

Part Number	Description	Quantity
48FCEN16L2M5-6W4C0	Rooftop Unit	6
	Base Unit	
	Condensate Overflow Switch and RA and SA Smoke Detectors	
	Al/Cu - Al/Cu - Louvered Hail Guards	
	Hinged Panels and Unpowered Convenience Outlet	
	Non-Fused Disconnect	
	Humidi-MiZer™ Adaptive Dehumidification System	
	Ultra Low leak Enty Econo X with baro relief, W7220 control. Meets Calif. Title 24 FDD & Leak Rates	
<b>Field Installed Accessories</b>		
CRPHASE3001A02	Phase Monitor Control	6
CRSTATUS001A00	Fan/Filter Status Switch	6
18X24X2-M8-R-P6	18x24x2 MERV-8 replacement air filters	6
--HL--38MG-029	Humidistat	6

## Unit Report For RTU - 1-6

Project: Torchys Tacos - 15 ton bulk order  
Prepared By:

11/17/2022  
09:38AM

CRRFCURB074A00	14-inch Roof Curb	6
----------------	-------------------	---

# Certified Drawing for RTU - 1-6

Project: Torchys Tacos - 15 ton bulk order  
Prepared By:

11/17/2022  
09:38AM

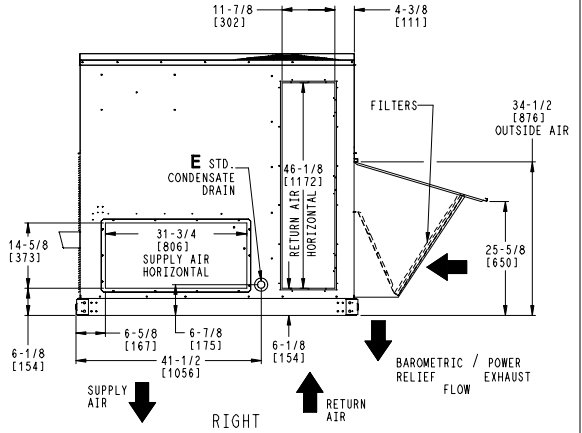
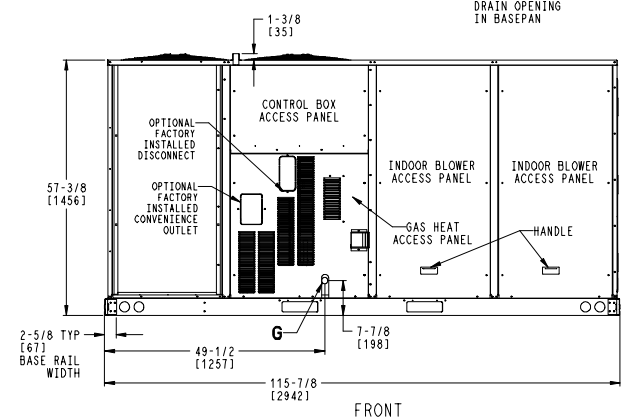
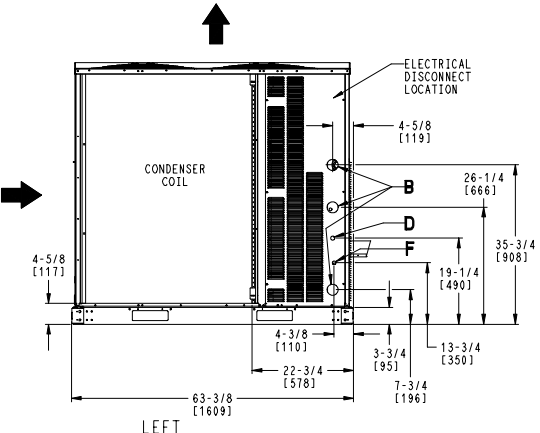
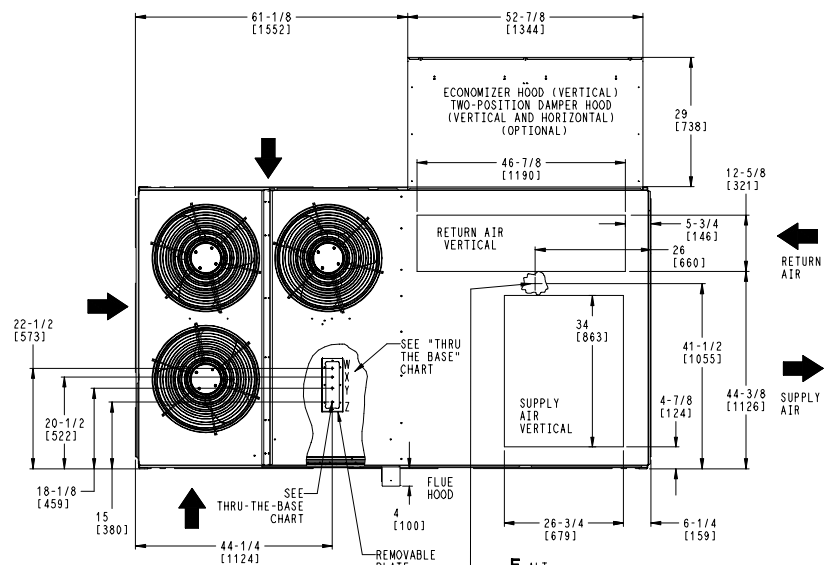
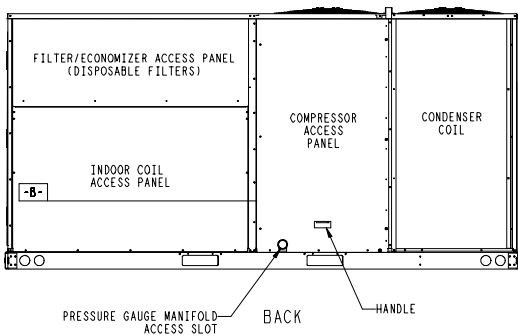
- NOTES:
1. DIMENSIONS ARE IN INCHES, DIMENSIONS IN [ ] ARE IN MILLIMETERS.
  2. CENTER OF GRAVITY
  3. DIRECTION OF AIR FLOW

THIS DOCUMENT IS THE PROPERTY OF CARRIER CORPORATION AND IS DELIVERED UPON THE EXPRESS CONDITION THAT THE CONTENTS WILL NOT BE DISCLOSED OR USED WITHOUT CARRIER CORPORATION'S WRITTEN CONSENT. SUBMISSION OF THESE DRAWINGS OR DOCUMENTS DOES NOT CONSTITUTE PART PERFORMANCE OR ACCEPTANCE OF CONTRACT.

CONNECTION SIZES	
B	2 1/2" [64] DIA POWER SUPPLY HOLE
D	7/8" [22] DIA FIELD CONTROL WIRING HOLE
E	3/4"-14 NPT CONDENSATE DRAIN
F	7/8" [22] DIA FIELD CONVEIENCE OUTLET HOLE
G	3/4"-14 NPT GAS CONNECTION

THRU-THE-BASE CHART THESE HOLES REQUIRED FOR USE CRBTMPWRO05A00,006A00,007A00			
ACCESSORY NO.	THREADED CONDUIT SIZE	WIRE USE	REQ'D HOLE SIZES (MAX.)
005	W	1/2" ACC.	7/8" [22.2]
	X	1/2" 24V	7/8" [22.2]
	Y	1 1/4" POWER	1 1/2" [38.1]
006	Z	3/4" PIPE GAS	1 3/4" [44.5]
	W	1/2" ACC.	7/8" [22.2]
	X	1/2" 24V	7/8" [22.2]
007	Y	1 1/2" POWER	2" [50.8]
	Z	3/4" PIPE GAS	1 3/4" [44.5]
	W	1/2" ACC.	7/8" [22.2]
	X	1/2" 24V	7/8" [22.2]
	Y	2" POWER	2 1/2" [63.5]
	Z	3/4" PIPE GAS	1 3/4" [44.5]

FOR "THRU-THE-BASEPAN" FACTORY OPTION, FITTINGS FOR X & Y ARE PROVIDED AS SPECIFIED ON "006".



ITC CLASSIFICATION	SHEET	DATE	SUPERCEDES	48FC 16 SINGLE ZONE ELECTRICAL COOLING WITH GAS HEAT	50TM002025	REV
U.S. ECCN: NSR	1 OF 2	06/10/21	-			-

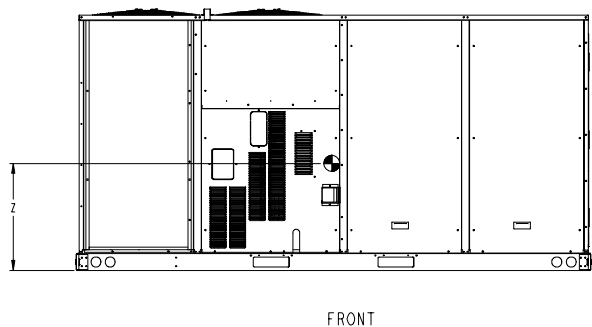
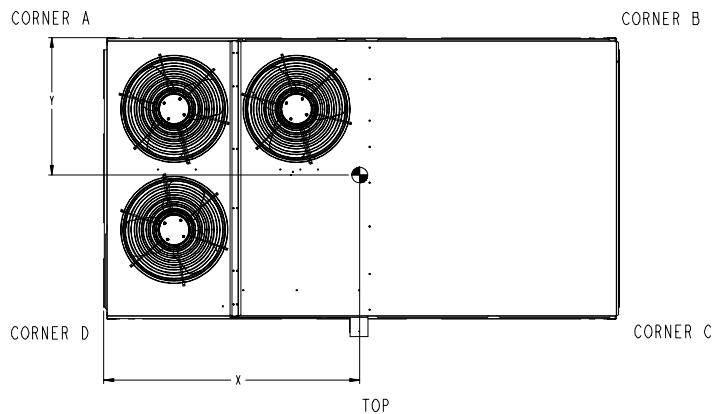
# Certified Drawing for RTU - 1-6

Project: Torchys Tacos - 15 ton bulk order  
Prepared By:

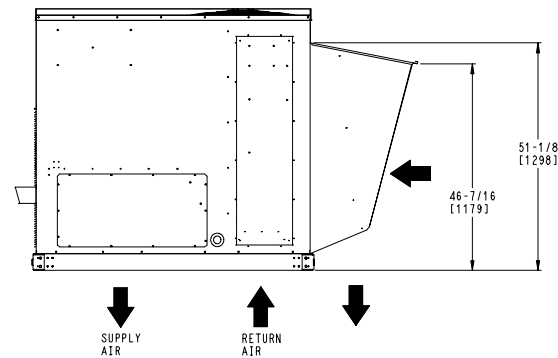
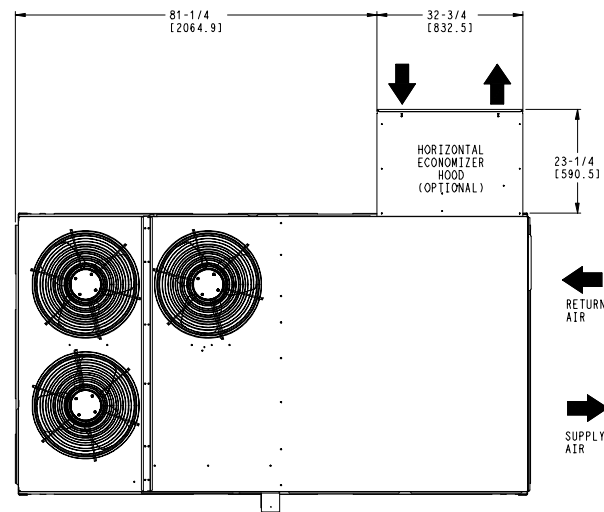
11/17/2022  
09:38AM

UNIT	STD UNIT WEIGHT		CORNER WEIGHT (A)		CORNER WEIGHT (B)		CORNER WEIGHT (C)		CORNER WEIGHT (D)		C.G.		
	LBS.	KG.	LBS.	KG.	LBS.	KG.	LBS.	KG.	LBS.	KG.	X	Y	Z
48FC-M16	1480	639	373	169	341	155	332	150	362	164	55 3/8 [1407]	31 1/4 [794]	21 1/8 [537]

STANDARD UNIT WEIGHT IS WITH LOW HEAT & WITHOUT PACKAGING.  
FOR OPTIONS & ACCESSORIES, REFER TO THE PRODUCT DATA CATALOG.



**Carrier** THIS DOCUMENT IS THE PROPERTY OF CARRIER CORPORATION AND IS DELIVERED UPON THE EXPRESS CONDITION THAT THE CONTENTS WILL NOT BE DISCLOSED OR USED WITHOUT CARRIER CORPORATION'S WRITTEN CONSENT. SUBMISSION OF THESE DRAWINGS OR DOCUMENTS DOES NOT CONSTITUTE PART PERFORMANCE OR ACCEPTANCE OF CONTRACT.



**HORIZONTAL ECONOMIZER**

ITC CLASSIFICATION	SHEET	DATE	SUPERCEDES	DESCRIPTION	REV
U.S. ECCN:NSR	2 OF 2	06/10/21	-	48FC 16 SINGLE ZONE ELECTRICAL COOLING WITH GAS HEAT	50TM002025

# Certified Drawing for RTU - 1-6

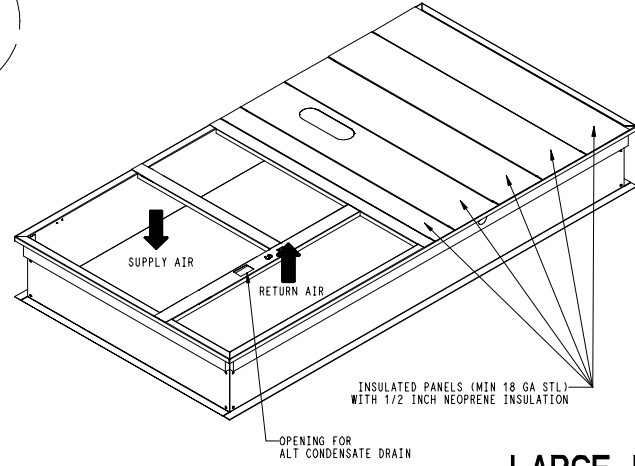
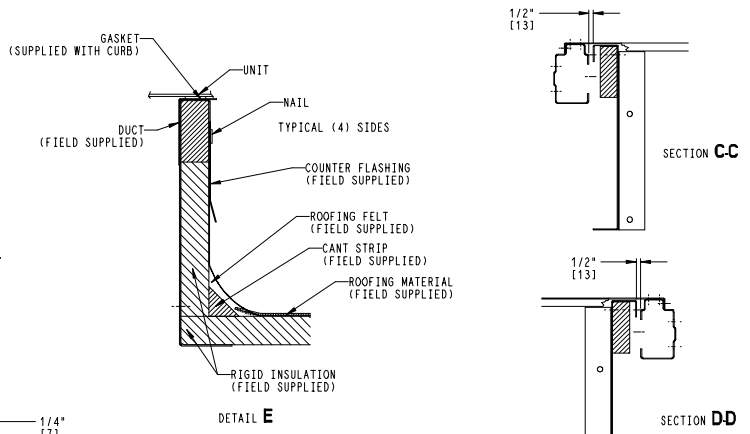
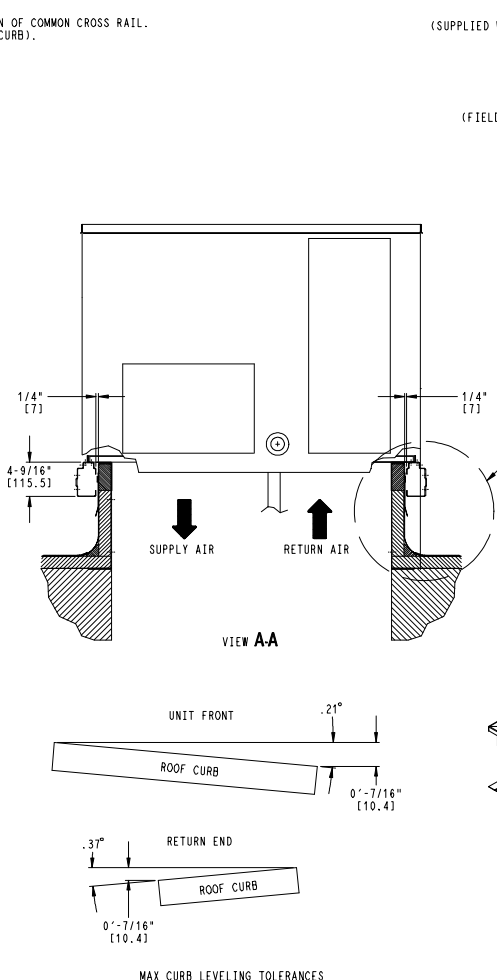
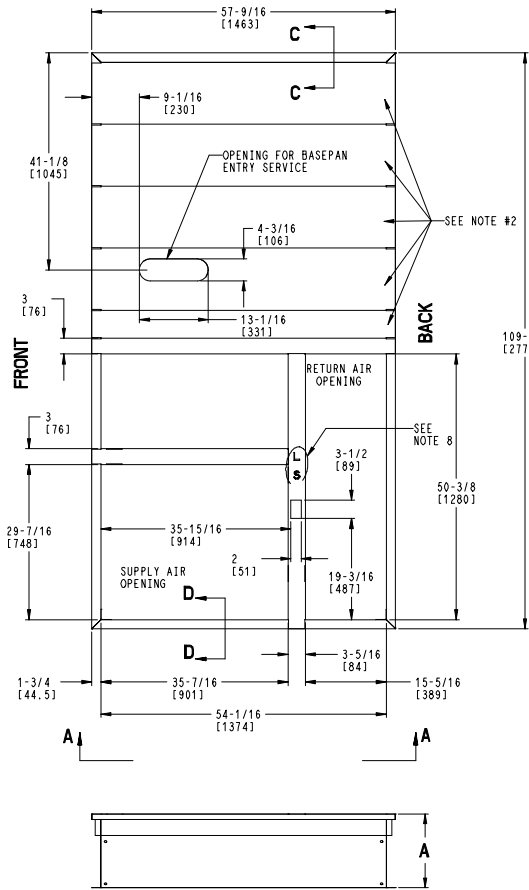
Project: Torchys Tacos - 15 ton bulk order  
 Prepared By:

11/17/2022  
 09:38AM

ROOF CURB ACCESSORY #	A
CRRFCURB074A00	14" [356]
CRRFCURB075A00	24" [610]

- NOTES:
1. ROOFCURB ACCESSORY IS SHIPPED DISASSEMBLED.
  2. INSULATED PANELS: 1/2" THK. NEOPRENE FOAM, 1.0# DENSITY.
  3. DIMENSIONS IN ( ) ARE IN MILLIMETERS.
  4. ROOFCURB SIDEWALLS: 16 GAGE STEEL.
  5. ATTACH DUCTWORK TO CURB. (FLANGES OF DUCT REST ON CURB).
  6. SERVICE CLEARANCE 4 FT ON EACH SIDE.
  7. DIRECTION OF AIR FLOW.
  8. "L" & "S" DESIGNATIONS DENOTE LOCATION OF COMMON CROSS RAIL. (POSITION "L" FOR LARGE DUCT OPENING CURB).

THIS DOCUMENT IS THE PROPERTY OF UTC CLIMATE, CONTROLS & SECURITY AND IS DELIVERED UPON THE EXPRESS CONDITION THAT THE CONTENTS WILL NOT BE DISCLOSED OR USED WITHOUT WRITTEN CONSENT.
 SUBMISSION OF THESE DRAWINGS OR DOCUMENTS DOES NOT CONSTITUTE PART PERFORMANCE OR ACCEPTANCE OF CONTRACT.



## LARGE DUCT OPENINGS

ITC CLASSIFICATION	SHEET	DATE	SUPERCEDES	48/50HCD14 / 48/50TCD16 / 48/50LC08,09,12	50TM500780	REV
U.S. ECCN:NSR	1 OF 1	12/19/17	02/15/13	ROOF CURB		B



# Performance Summary For RTU - 1-6

Project: Torchys Tacos - 15 ton bulk order  
Prepared By:

11/17/2022  
09:38AM

## Part Number:48FCEN16L2M5-6W4C0

ARI EER: ..... **10.80**  
IEER (Max Cooling at Normal Cooling Design Mode): ..... **14.5**

### Base Unit Dimensions

Unit Length: ..... **115.9** in  
Unit Width: ..... **66.4** in  
Unit Height: ..... **57.4** in

### Operating Weight

Base Unit Weight: ..... **1325** lb  
Medium Heat: ..... **18** lb  
Single Circuit, Two Stage Cooling with Humidi-MiZer: ..... **55** lb  
Condensate Overflow Switch and RA and SA Smoke Detectors: ..... **19** lb  
Al/Cu - Al/Cu - Louvered Hail Guards: ..... **44** lb  
Enthalpy Ultra Low Leak Econo w/Baro Relief: ..... **87** lb  
Hinged Panels and Unpowered Convenience Outlet: ..... **9** lb  
Non-Fused Disconnect: ..... **15** lb

### Accessories

14-inch Roof Curb: ..... **180** lb

Total Operating Weight: ..... **1752** lb

### Unit

Unit Voltage-Phase-Hertz: ..... **208-3-60**  
Air Discharge: ..... **Vertical**  
Fan Drive Type: ..... **Vane Axial**  
Actual Airflow: ..... **6000** CFM  
Site Altitude: ..... **0** ft

### Cooling Performance

Condenser Entering Air DB: ..... **95.0** F  
Evaporator Entering Air DB: ..... **80.0** F  
Evaporator Entering Air WB: ..... **67.0** F  
Evaporator Entering Air Enthalpy: ..... **31.44** BTU/lb  
Evaporator Leaving Air DB: ..... **59.2** F  
Evaporator Leaving Air WB: ..... **57.5** F  
Evaporator Leaving Air Enthalpy: ..... **24.72** BTU/lb  
Gross Cooling Capacity: ..... **181.30** MBH  
Gross Sensible Capacity: ..... **134.70** MBH  
Compressor Power Input: ..... **13.50** kW  
Coil Bypass Factor: ..... **0.110**

### Heating Performance

Heating Airflow: ..... **6000** CFM  
Entering Air Temp: ..... **70.0** F  
Leaving Air Temp: ..... **100.1** F  
Gas Heating Input Capacity: ..... **192.0 / 240.0** MBH  
Gas Heating Output Capacity: ..... **156.0 / 195.0** MBH  
Temperature Rise: ..... **30.1** F

### Supply Fan

External Static Pressure: ..... **0.50** in wg  
Options / Accessories Static Pressure  
Humidi-MiZer Dehumidification System: ..... **0.11** in wg  
Economizer: ..... **0.05** in wg  
MERV-8 Filter Kit: ..... **0.12** in wg  
Application External Static (ESP + Unit Opts/Acc.): ..... **0.78** in wg  
Fan RPM: ..... **1749**  
Fan Power: ..... **2.65** BHP

## Performance Summary For RTU - 1-6

Project: Torchys Tacos - 15 ton bulk order  
 Prepared By:

11/17/2022  
 09:38AM

NOTE: ..... Selected IFM RPM Range: 250 - 2200

**Selection includes construction throwaway filter into the base fan curve. This filter is not MERV Rated.**

**Filter pressure drop assumes a clean filter and is intended to be an estimate based on available supplier data. The actual pressure drop the unit experiences may vary due to alternate suppliers or filter loading over time.**

**Electrical Data**

Voltage Range: .....	<b>187 - 253</b>
Compressor #1 RLA:.....	<b>28.2</b>
Compressor #1 LRA:.....	<b>239</b>
Compressor #2 RLA:.....	<b>19.6</b>
Compressor #2 LRA:.....	<b>136</b>
Indoor Fan Motor Type:.....	<b>MED</b>
Indoor Fan Motor FLA (Total):.....	<b>7.5</b>
Combustion Fan Motor FLA (ea):.....	<b>0.48</b>
Power Supply MCA:.....	<b>67</b>
Power Supply MOCP (Fuse or HACR):.....	<b>80</b>
Disconnect Size FLA:.....	<b>69</b>
Disconnect Size LRA: .....	<b>398</b>
Electrical Convenience Outlet: .....	<b>None</b>
Outdoor Fan [Qty / FLA (ea)]: .....	<b>3 / 1.5</b>

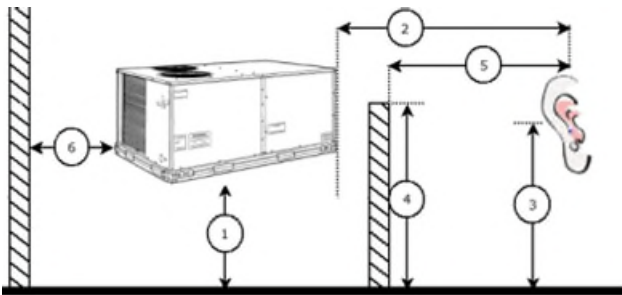
**Control Panel SCCR: 5kA RMS at Rated Symmetrical Voltage**

**Acoustics**

Sound Power Levels, db re 10E-12 Watts

	<b>Discharge</b>	<b>Inlet</b>	<b>Outdoor</b>
63 Hz	95.7	92.5	87.0
125 Hz	96.4	86.3	85.2
250 Hz	81.0	65.0	84.6
500 Hz	77.7	66.5	84.9
1000 Hz	71.8	64.6	82.2
2000 Hz	67.0	61.4	78.4
4000 Hz	73.8	62.3	75.3
8000 Hz	71.8	59.3	72.9
A-Weighted	83.5	73.9	87.0

**Advanced Acoustics**



**Advanced Acoustics Parameters**

1. Unit height above ground: .....	<b>30.0</b> ft
2. Horizontal distance from unit to receiver: .....	<b>50.0</b> ft
3. Receiver height above ground: .....	<b>5.7</b> ft
4. Height of obstruction: .....	<b>0.0</b> ft

## Performance Summary For RTU - 1-6

Project: Torchys Tacos - 15 ton bulk order  
Prepared By:

11/17/2022  
09:38AM

5. Horizontal distance from obstruction to receiver: .0.0 ft
6. Horizontal distance from unit to obstruction: .....0.0 ft

### Detailed Acoustics Information

Octave Band Center Freq. Hz	63	125	250	500	1k	2k	4k	8k	Overall
A	87.0	85.2	84.6	84.9	82.2	78.4	75.3	72.9	92.4 Lw
B	60.8	69.1	76.0	81.7	82.2	79.6	76.3	71.8	87.1 LwA
C	54.6	52.8	52.2	52.5	49.8	46.0	42.9	40.5	60.0 Lp
D	28.4	36.7	43.6	49.3	49.8	47.2	43.9	39.4	54.7 LpA

### Legend

- A Sound Power Levels at Unit's Acoustic Center, Lw
- B A-Weighted Sound Power Levels at Unit's Acoustic Center, LwA
- C Sound Pressure Levels at Specific Distance from Unit, Lp
- D A-Weighted Sound Pressure Levels at Specific Distance from Unit, LpA

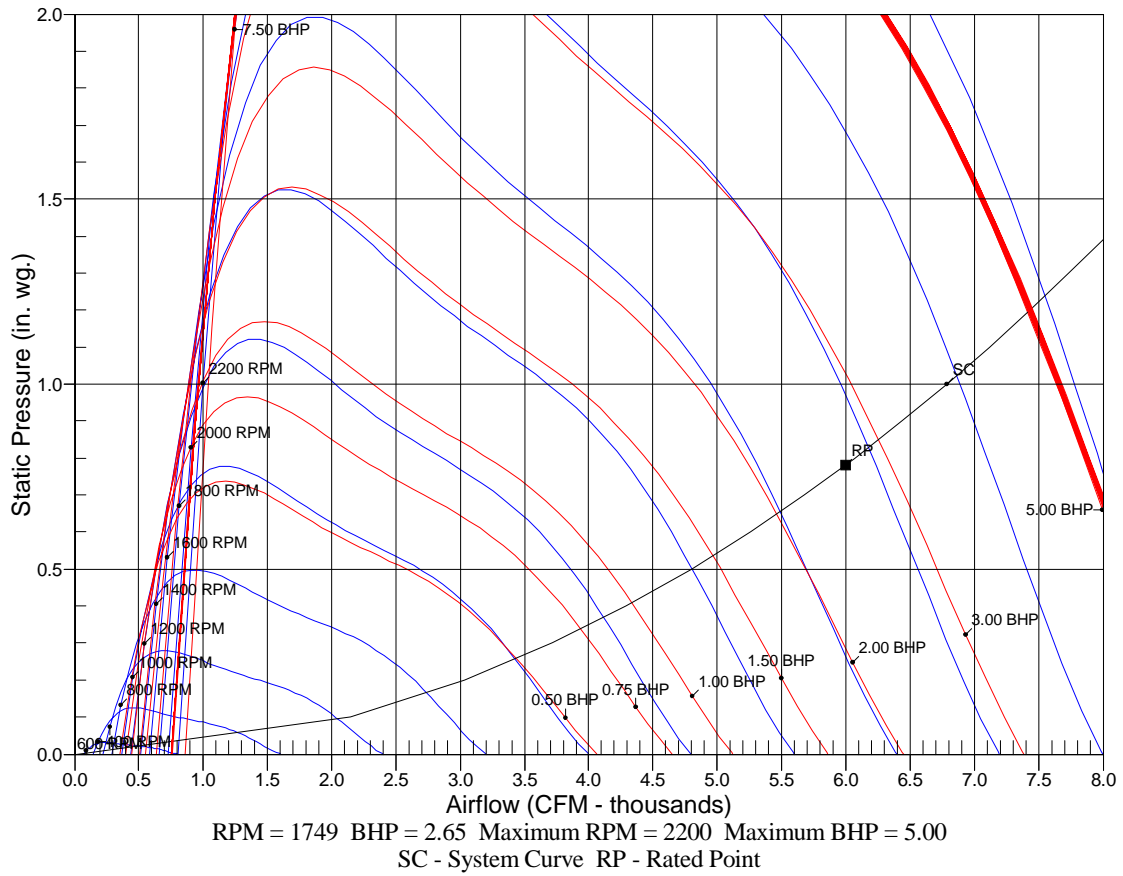
Calculation methods used in this program are patterned after the ASHRAE Guide; other ASHRAE Publications and the AHRI Acoustical Standards. While a very significant effort has been made to insure the technical accuracy of this program, it is assumed that the user is knowledgeable in the art of system sound estimation and is aware of the tolerances involved in real world acoustical estimation. This program makes certain assumptions as to the dominant sound sources and sound paths which may not always be appropriate to the real system being estimated. Because of this, no assurances can be offered that this software will always generate an accurate sound prediction from user supplied input data. If in doubt about the estimation of expected sound levels in a space, an Acoustical Engineer or a person with sound prediction expertise should be consulted.

# Performance Summary For RTU - 1-6

Project: Torchys Tacos - 15 ton bulk order  
Prepared By:

11/17/2022  
09:38AM

## Fan Curve



**RTU - 7-12**

**Tag Cover Sheet  
Unit Report  
Certified Drawing  
Performance Report**

## Unit Report For RTU - 7-12

Project: Torchys Tacos - 15 ton bulk order  
 Prepared By:

11/17/2022  
 09:38AM

### Unit Parameters

Unit Model:.....**48FCFN16L2M5-6W4C0**  
 Unit Size:.....**16 (15 Tons)**  
 Volts-Phase-Hertz:.....**208-3-60**  
 Heating Type:.....**Gas**  
 Heat Control:.....**High Heat**  
 Duct Cfg:.....**Vertical Supply / Vertical Return**  
 DX Options:**Single Circuit, Two Stage Cooling with Humidi-MiZer** .....

### Dimensions (ft. in.) & Weight (lb.) \*\*\*

Unit Length:.....**9' 7.875"**  
 Unit Width:.....**5' 6.375"**  
 Unit Height:.....**4' 9.375"**  
**Total Operating Weight:..... 1770 lb**

\*\*\* Weights and Dimensions are approximate. Weight does not include unit packaging. Approximate dimensions are provided primarily for shipping purposes. For exact dimensions and weights, refer to appropriate product data catalog.

### Lines and Filters

Gas Line Size: **3/4**  
 Condensate Drain Line Size: **3/4**  
 Return Air Filter Type: **Throwaway**  
 Return Air Filter Quantity: **6**  
 Return Air Filter Size: **18 x 24 x 2**

**Selection includes construction throwaway filter into the base fan curve. This filter is not MERV Rated.**

### Unit Configuration

Condensate Overflow Switch and RA and SA Smoke Detectors  
 Standard/Medium Static (EcoBlue)  
 Al/Cu - Al/Cu - Louvered Hail Guards  
 Electromechanical Controls w/W7220 Econo Controller  
 Enthalpy Ultra Low Leak Econo w/Baro Relief  
 Hinged Panels and Unpowered Convenience Outlet  
 Non-Fused Disconnect  
 Standard Packaging  
 Humidi-MiZer™ Adaptive Dehumidification System

### Warranty Information

1-Year parts(std.)  
 5-Year compressor parts(std.)  
 10-Year heat exchanger - Aluminized(std.)

No optional warranties were selected.

**NOTE: Please see Warranty Catalog 500-089 for explanation of policies and ordering methods.**

### Ordering Information

Part Number	Description	Quantity
48FCFN16L2M5-6W4C0	Rooftop Unit	6
	Base Unit	
	Condensate Overflow Switch and RA and SA Smoke Detectors	
	Al/Cu - Al/Cu - Louvered Hail Guards	
	Hinged Panels and Unpowered Convenience Outlet	
	Non-Fused Disconnect	
	Humidi-MiZer™ Adaptive Dehumidification System	
	Ultra Low leak Enty Econo X with baro relief, W7220 control. Meets Calif. Title 24 FDD & Leak Rates	
<b>Field Installed Accessories</b>		
CRPHASE3001A02	Phase Monitor Control	6
CRSTATUS001A00	Fan/Filter Status Switch	6
18X24X2-M8-R-P6	18x24x2 MERV-8 replacement air filters	6
--HL--38MG-029	Humidistat	6

## Unit Report For RTU - 7-12

Project: Torchys Tacos - 15 ton bulk order  
Prepared By:

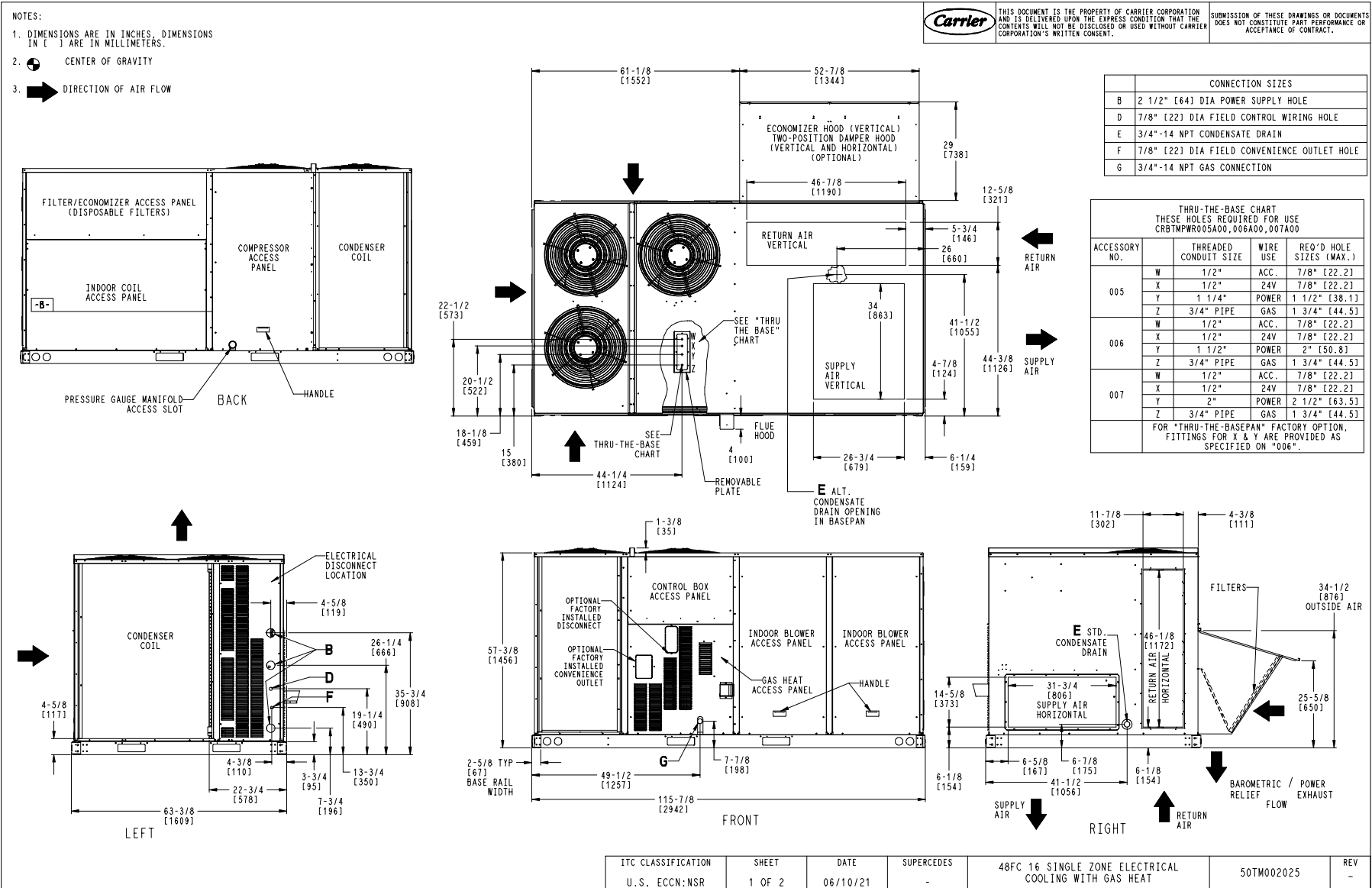
11/17/2022  
09:38AM

CRRFCURB074A00	14-inch Roof Curb	6
----------------	-------------------	---

# Certified Drawing for RTU - 7-12

Project: Torchys Tacos - 15 ton bulk order  
Prepared By:

11/17/2022  
09:38AM





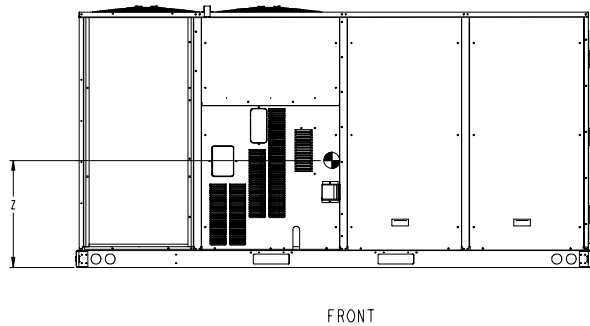
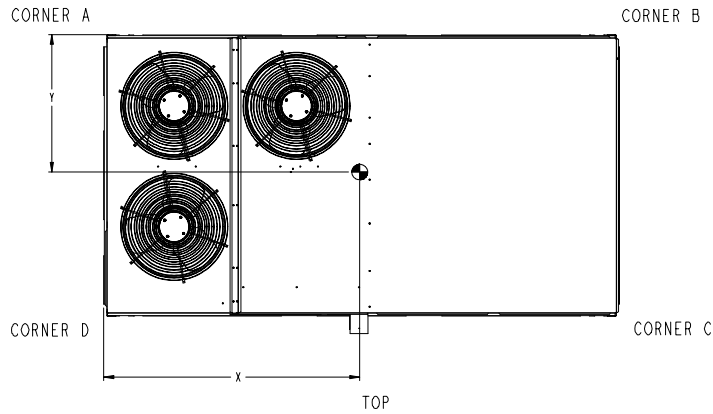
# Certified Drawing for RTU - 7-12

Project: Torchys Tacos - 15 ton bulk order  
 Prepared By:

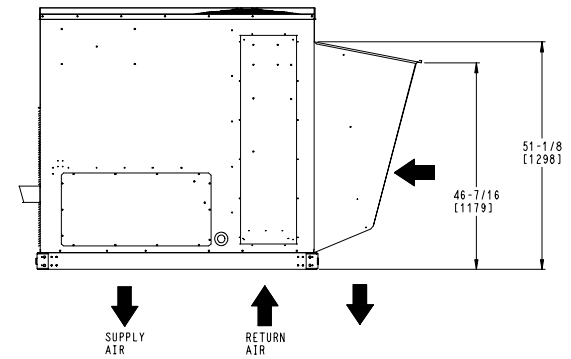
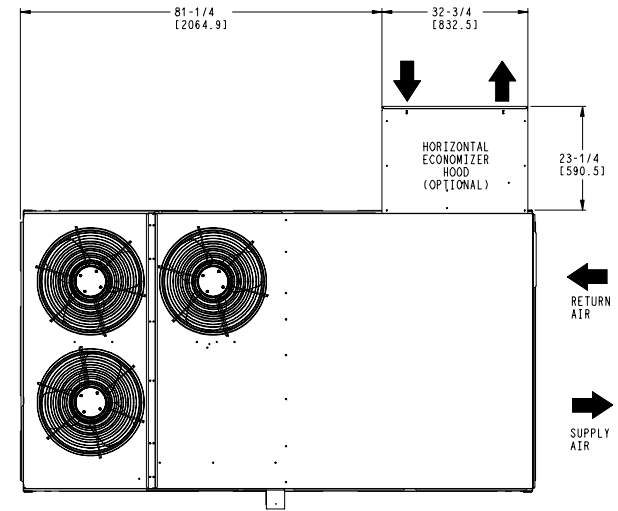
11/17/2022  
 09:38AM

UNIT	STD UNIT WEIGHT		CORNER WEIGHT (A)		CORNER WEIGHT (B)		CORNER WEIGHT (C)		CORNER WEIGHT (D)		C.G.		
	LBS.	KG.	LBS.	KG.	LBS.	KG.	LBS.	KG.	LBS.	KG.	X	Y	Z
48FC-M16	1480	639	373	169	341	155	332	150	362	164	55 3/8 [1407]	31 1/4 [794]	21 1/8 [537]

STANDARD UNIT WEIGHT IS WITH LOW HEAT & WITHOUT PACKAGING.  
 FOR OPTIONS & ACCESSORIES, REFER TO THE PRODUCT DATA CATALOG.



**Carrier** THIS DOCUMENT IS THE PROPERTY OF CARRIER CORPORATION AND IS DELIVERED UPON THE EXPRESS CONDITION THAT THE CONTENTS WILL NOT BE DISCLOSED OR USED WITHOUT CARRIER CORPORATION'S WRITTEN CONSENT. SUBMISSION OF THESE DRAWINGS OR DOCUMENTS DOES NOT CONSTITUTE PART PERFORMANCE OR ACCEPTANCE OF CONTRACT.



**HORIZONTAL ECONOMIZER**

ITC CLASSIFICATION	SHEET	DATE	SUPERCEDES	48FC 16 SINGLE ZONE ELECTRICAL COOLING WITH GAS HEAT	50TM002025	REV
U.S. ECCN:NSR	2 OF 2	06/10/21	-			-

# Certified Drawing for RTU - 7-12

Project: Torchys Tacos - 15 ton bulk order  
Prepared By:

11/17/2022  
09:38AM

<table border="1" style="width: 100%; border-collapse: collapse;"> <tr> <th style="text-align: left;">ROOF CURB ACCESSORY #</th> <th style="text-align: left;">A</th> </tr> <tr> <td>CRRFCURB074A00</td> <td>14" [356]</td> </tr> <tr> <td>CRRFCURB075A00</td> <td>24" [610]</td> </tr> </table>	ROOF CURB ACCESSORY #	A	CRRFCURB074A00	14" [356]	CRRFCURB075A00	24" [610]	<p><b>NOTES:</b></p> <ol style="list-style-type: none"> <li>1. ROOFCURB ACCESSORY IS SHIPPED DISASSEMBLED.</li> <li>2. INSULATED PANELS: 1/2" THK. NEOPRENE FOAM, 1.0# DENSITY.</li> <li>3. DIMENSIONS IN ( ) ARE IN MILLIMETERS.</li> <li>4. ROOFCURB SIDEWALLS: 16 GAGE STEEL.</li> <li>5. ATTACH DUCTWORK TO CURB. (FLANGES OF DUCT REST ON CURB).</li> <li>6. SERVICE CLEARANCE 4 FT ON EACH SIDE.</li> <li>7.  DIRECTION OF AIR FLOW.</li> <li>8. "L" &amp; "S" DESIGNATIONS DENOTE LOCATION OF COMMON CROSS RAIL. (POSITION "L" FOR LARGE DUCT OPENING CURB).</li> </ol>		<p>THIS DOCUMENT IS THE PROPERTY OF UTC CLIMATE, CONTROLS &amp; SECURITY AND IS DELIVERED UPON THE EXPRESS CONDITION THAT THE CONTENTS WILL NOT BE DISCLOSED OR USED WITHOUT WRITTEN CONSENT.</p> <p>SUBMISSION OF THESE DRAWINGS OR DOCUMENTS DOES NOT CONSTITUTE PART PERFORMANCE OR ACCEPTANCE OF CONTRACT.</p>
ROOF CURB ACCESSORY #	A								
CRRFCURB074A00	14" [356]								
CRRFCURB075A00	24" [610]								

**LARGE DUCT OPENINGS**

ITC CLASSIFICATION	SHEET	DATE	SUPERCEDES	48/50HCD14 / 48/50TCD16 / 48/50LC08,09,12	50TM500780	REV
U.S. ECCN:NSR	1 OF 1	12/19/17	02/15/13	ROOF CURB		B

## Performance Summary For RTU - 7-12

Project: Torchys Tacos - 15 ton bulk order  
 Prepared By:

11/17/2022  
 09:38AM

### Part Number:48FCFN16L2M5-6W4C0

ARI EER: ..... **10.80**  
 IEER (Max Cooling at Normal Cooling Design Mode): ..... **14.5**

#### Base Unit Dimensions

Unit Length: ..... **115.9** in  
 Unit Width: ..... **66.4** in  
 Unit Height: ..... **57.4** in

#### Operating Weight

Base Unit Weight: ..... **1325** lb  
 High Heat: ..... **36** lb  
 Single Circuit, Two Stage Cooling with Humidi-MiZer: ..... **55** lb  
 Condensate Overflow Switch and RA and SA Smoke Detectors: ..... **19** lb  
 Al/Cu - Al/Cu - Louvered Hail Guards: ..... **44** lb  
 Enthalpy Ultra Low Leak Econo w/Baro Relief: ..... **87** lb  
 Hinged Panels and Unpowered Convenience Outlet: ..... **9** lb  
 Non-Fused Disconnect: ..... **15** lb

#### Accessories

14-inch Roof Curb: ..... **180** lb

Total Operating Weight: ..... **1770** lb

#### Unit

Unit Voltage-Phase-Hertz: ..... **208-3-60**  
 Air Discharge: ..... **Vertical**  
 Fan Drive Type: ..... **Vane Axial**  
 Actual Airflow: ..... **6000** CFM  
 Site Altitude: ..... **0** ft

#### Cooling Performance

Condenser Entering Air DB: ..... **95.0** F  
 Evaporator Entering Air DB: ..... **80.0** F  
 Evaporator Entering Air WB: ..... **67.0** F  
 Evaporator Entering Air Enthalpy: ..... **31.44** BTU/lb  
 Evaporator Leaving Air DB: ..... **59.2** F  
 Evaporator Leaving Air WB: ..... **57.5** F  
 Evaporator Leaving Air Enthalpy: ..... **24.72** BTU/lb  
 Gross Cooling Capacity: ..... **181.30** MBH  
 Gross Sensible Capacity: ..... **134.70** MBH  
 Compressor Power Input: ..... **13.50** kW  
 Coil Bypass Factor: ..... **0.110**

#### Heating Performance

Heating Airflow: ..... **6000** CFM  
 Entering Air Temp: ..... **70.0** F  
 Leaving Air Temp: ..... **113.8** F  
 Gas Heating Input Capacity: ..... **280.0 / 350.0** MBH  
 Gas Heating Output Capacity: ..... **224.0 / 284.0** MBH  
 Temperature Rise: ..... **43.8** F

#### Supply Fan

External Static Pressure: ..... **0.50** in wg  
 Options / Accessories Static Pressure  
     Humidi-MiZer Dehumidification System: ..... **0.11** in wg  
     Economizer: ..... **0.05** in wg  
     MERV-8 Filter Kit: ..... **0.12** in wg  
 Application External Static (ESP + Unit Opts/Acc.): ..... **0.78** in wg  
 Fan RPM: ..... **1796**  
 Fan Power: ..... **2.89** BHP

## Performance Summary For RTU - 7-12

Project: Torchys Tacos - 15 ton bulk order  
 Prepared By:

11/17/2022  
 09:38AM

NOTE: ..... Selected IFM RPM Range: 250 - 2200

**Selection includes construction throwaway filter into the base fan curve. This filter is not MERV Rated.**

**Filter pressure drop assumes a clean filter and is intended to be an estimate based on available supplier data. The actual pressure drop the unit experiences may vary due to alternate suppliers or filter loading over time.**

**Electrical Data**

Voltage Range: .....	<b>187 - 253</b>
Compressor #1 RLA:.....	<b>28.2</b>
Compressor #1 LRA:.....	<b>239</b>
Compressor #2 RLA:.....	<b>19.6</b>
Compressor #2 LRA:.....	<b>136</b>
Indoor Fan Motor Type:.....	<b>MED</b>
Indoor Fan Motor FLA (Total):.....	<b>7.5</b>
Combustion Fan Motor FLA (ea):.....	<b>0.48</b>
Power Supply MCA:.....	<b>67</b>
Power Supply MOCP (Fuse or HACR):.....	<b>80</b>
Disconnect Size FLA:.....	<b>69</b>
Disconnect Size LRA: .....	<b>398</b>
Electrical Convenience Outlet: .....	<b>None</b>
Outdoor Fan [Qty / FLA (ea)]: .....	<b>3 / 1.5</b>

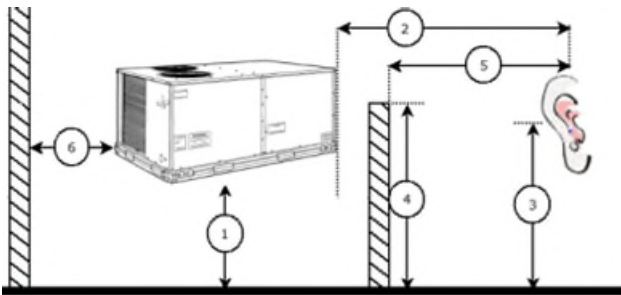
**Control Panel SCCR: 5kA RMS at Rated Symmetrical Voltage**

**Acoustics**

Sound Power Levels, db re 10E-12 Watts

	<b>Discharge</b>	<b>Inlet</b>	<b>Outdoor</b>
63 Hz	96.1	92.7	87.0
125 Hz	96.6	86.8	85.2
250 Hz	81.8	66.3	84.6
500 Hz	78.2	67.1	84.9
1000 Hz	72.7	65.3	82.2
2000 Hz	67.9	62.1	78.4
4000 Hz	74.4	62.9	75.3
8000 Hz	72.9	60.0	72.9
 A-Weighted	 84.0	 74.5	 87.0

**Advanced Acoustics**



**Advanced Acoustics Parameters**

1. Unit height above ground: .....	<b>30.0</b>	ft
2. Horizontal distance from unit to receiver: .....	<b>50.0</b>	ft
3. Receiver height above ground: .....	<b>5.7</b>	ft
4. Height of obstruction: .....	<b>0.0</b>	ft

## Performance Summary For RTU - 7-12

Project: Torchys Tacos - 15 ton bulk order  
Prepared By:

11/17/2022  
09:38AM

5. Horizontal distance from obstruction to receiver: .0.0 ft
6. Horizontal distance from unit to obstruction: .....0.0 ft

### Detailed Acoustics Information

Octave Band Center Freq. Hz	63	125	250	500	1k	2k	4k	8k	Overall
A	87.0	85.2	84.6	84.9	82.2	78.4	75.3	72.9	92.4 Lw
B	60.8	69.1	76.0	81.7	82.2	79.6	76.3	71.8	87.1 LwA
C	54.6	52.8	52.2	52.5	49.8	46.0	42.9	40.5	60.0 Lp
D	28.4	36.7	43.6	49.3	49.8	47.2	43.9	39.4	54.7 LpA

#### Legend

- A Sound Power Levels at Unit's Acoustic Center, Lw
- B A-Weighted Sound Power Levels at Unit's Acoustic Center, LwA
- C Sound Pressure Levels at Specific Distance from Unit, Lp
- D A-Weighted Sound Pressure Levels at Specific Distance from Unit, LpA

Calculation methods used in this program are patterned after the ASHRAE Guide; other ASHRAE Publications and the AHRI Acoustical Standards. While a very significant effort has been made to insure the technical accuracy of this program, it is assumed that the user is knowledgeable in the art of system sound estimation and is aware of the tolerances involved in real world acoustical estimation. This program makes certain assumptions as to the dominant sound sources and sound paths which may not always be appropriate to the real system being estimated. Because of this, no assurances can be offered that this software will always generate an accurate sound prediction from user supplied input data. If in doubt about the estimation of expected sound levels in a space, an Acoustical Engineer or a person with sound prediction expertise should be consulted.

# Performance Summary For RTU - 7-12

Project: Torchys Tacos - 15 ton bulk order  
Prepared By:

11/17/2022  
09:38AM

### Fan Curve

