

NOTE:
MECHANICAL CONTRACTOR TO HAVE A REPRESENTATIVE ON SITE DURING THE PRE-OPENING (VIP PARTY) WITH ALL REQUIRED TOOLS TO ENSURE PROPER OPERATION OF MECHANICAL SYSTEM.

NOTE:
DRAWINGS FOR HVAC WORK ARE DIAGRAMMATIC, SHOWING THE GENERAL LOCATION, TYPE, LAYOUT AND REQUIRED EQUIPMENT. DRAWINGS SHALL NOT BE SCALED FOR EXACT MEASUREMENTS. AS REQUIRED, REFER TO ARCHITECTURAL AND MANUFACTURER'S STANDARD INSTALLATION DRAWINGS FOR EQUIPMENT CONNECTIONS AND INSTALLATION REQUIREMENTS. FURNISH AND INSTALL DUCTWORK, CONNECTIONS, ACCESSORIES, OFFSETS, AND MATERIALS NECESSARY TO FACILITATE SYSTEM'S FUNCTIONING AS INDICATED BY THE DESIGN AND EQUIPMENT SHOWN ON PLANS.

MECHANICAL SYMBOLS	
	RECTANGULAR DUCT 18" WIDE BY 12" DEEP
	12" DIAMETER SPIRAL DUCT IN EXPOSED AREAS ONLY
	12" DIAMETER ROUND DUCT
	SUPPLY DUCT IN SECTION
	RETURN OR EXHAUST DUCT IN SECTION
	ELBOW WITH TURNING VANES
	TEE WITH TURNING VANES
	ROUND (OR OVAL) ELBOW
	SUPPLY AIR DIFFUSER WITH ROUND SUPPLY DUCT
	RETURN OR EXHAUST AIR DIFFUSER WITH ROUND DUCT
	THERMOSTAT
	REMOTE TEMPERATURE SENSOR
	DOOR UNDERCUT
	FIRE DAMPER (FD)
	SMOKE DETECTOR

SEAL:

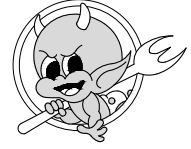


MPW ENGINEERING, LLC
110 N. 2101 STREET • SUITE 200 • COLUMBUS, OH 43208
PH: 614.885.1100 FAX: 614.885.1101



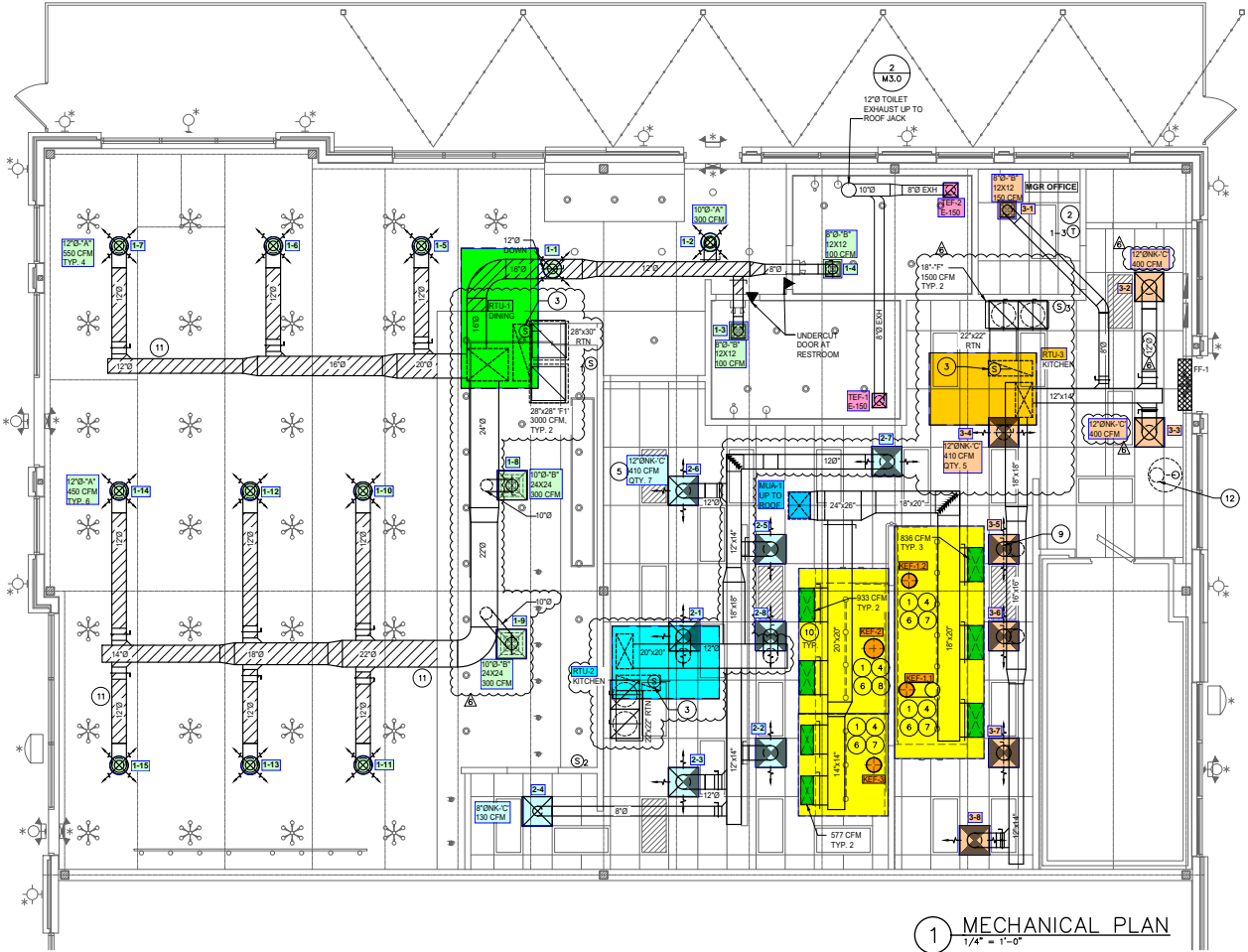
TORCHYS TACOS

Liberty Way West
7673 Blake Street, Suite 100
Liberty Township, OH 45069



ISSUE LOG:

No.	Date	Description
1	10.18.23	RTU REVISION



KEYED NOTES:

- ALL GREASE DUCT SHALL BE WELDED BLACK IRON OR WELDED STAINLESS STEEL WITH 2 LAYERS OF 1-HOUR PYRE-WRAP OR OTHER UL LISTED BARRIER TO PROVIDE ZERO CLEARANCE TO COMBUSTIBLE ENCLOSURE. SLOPE AT 1/4" PER FOOT BACK TO HOODS. GRIND INTERIOR SMOOTH TO ELIMINATE LOCATIONS FOR GREASE TO BUILD UP. DUCT SHALL BE FREE OF SAGS AND POOLING POINTS. REFER DETAIL 8 & 9/M3.0
- PROVIDE THERMOSTAT AND MATCHING REMOTE SENSOR, WITH 24-7 PROGRAMMABLE CAPABILITY AND LIGHTSTAT OVERRIDE FOR NIGHT SETBACK MODE. LOCATE THERMOSTATS IN MANAGER'S OFFICE / AT MANAGER'S AREA, WITH REMOTE SENSORS WALL MOUNTED AS INDICATED ON PLANS. COORDINATE EXACT LOCATION WITH OWNER'S REPRESENTATIVE. SET HEAT AT 68° IN DINING, 70° IN KITCHEN. SET COOL AT 72° IN DINING, 78° IN KITCHEN.
- PROVIDE RETURN AIR DUCT SMOKE DETECTOR, WITH REMOTE ANNUNCIATOR/TEST SWITCH TO BE MOUNTED AT A CONSTANTLY ATTENDED LOCATION AS APPROVED BY THE AHI. DUCT DETECTOR SHALL BE ABLE TO COMMUNICATE WITH BUILDING FIRE CONTROL SYSTEM WHERE REQUIRED.
- INTERLOCK KITCHEN EXHAUST FANS AND KITCHEN SUPPLY FAN TO RUN SIMULTANEOUSLY. INTERLOCK RTU-3 TO OPERATE ANYTIME EITHER KEF-1.1, KEF-1.2, KEF-2, KEF-3 ARE RUNNING.
- PLASTIC TYPE SUPPLY DIFFUSER. ALL KITCHEN AREA.
- PROVIDE SOLENOID SHUT-OFF FOR GAS LINE UNDER HOOD. WIRE TO AUTOMATICALLY SHUTOFF GAS SUPPLY (AND ELECTRIC SUPPLY - VIA SHUNT TRIPS OR CONTACTOR) TO EQUIPMENT UNDER HOOD WHEN FIRE IS DETECTED. SEE PLUMBING PLAN.
- 12" Ø EXHAUST DUCT UP TO KEF-1.1, KEF-1.2 & KEF-3 ON ROOF. TRANSITION TO EXHAUST FAN AS REQUIRED. TRANSITIONS SHALL BE PREFABRICATED. DUCT SHALL BE WELDED AND GROUND SMOOTH, WITH NO SEAMS FOR GREASE TO ACCUMULATE ON. SLOPE CONTINUOUSLY BACK TO HOOD AT MINIMUM 1/4" PER FOOT.
- 16" Ø EXHAUST DUCT UP TO KEF-2 ON ROOF. TRANSITION TO EXHAUST FAN AS REQUIRED. TRANSITIONS SHALL BE PREFABRICATED. DUCT SHALL BE WELDED AND GROUND SMOOTH, WITH NO SEAMS FOR GREASE TO ACCUMULATE ON. SLOPE CONTINUOUSLY BACK TO HOOD AT MINIMUM 1/4" PER FOOT.
- EACH SUPPLY AIR DEVICE SHALL BE EQUIPPED WITH A VOLUME DAMPER. FOR DIFFUSERS IN HARD CEILING, VERIFY WITH PROJECT OWNER IF GRILLES SHALL BE ORDERED WITH VOLUME CONTROL IN FACE OF DIFFUSER, OR IF NECK DAMPERS WITH BOWDEN CONTROLS ARE PREFERRED (TYPICALLY A QUIETER OPTION). PROVIDE LINE ITEM UPGRADE PRICE TO USE BOWDEN CABLES OVER FACE-MOUNTED AIR DEVICE CONTROLS. TYPICAL.
- EXTEND DUCT UP FROM HOOD COLLAR TO MAKE-UP AIR TRUNK DUCT. REFER TO M3.1-M3.6 FOR HOOD DRAWINGS AND ASSOCIATED COMPONENTS. TYPICAL.
- REFER TO ARCHITECTURAL DRAWINGS FOR ELEVATIONS. TYPICAL.
- WATER HEATER FLUE TO ROOF. OFFSET AS REQUIRED. REFER TO 3/M3.0.

1 MECHANICAL PLAN
1/4" = 1'-0"

MECHANICAL PLAN

PROJECT NUMBER:	2022-2
ISSUE DATE:	Sept. 2, 2022

M2.0