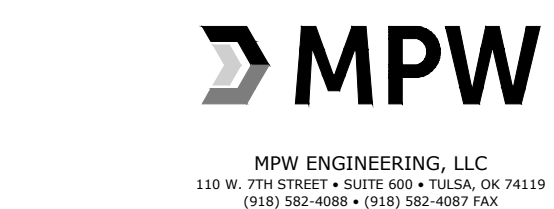


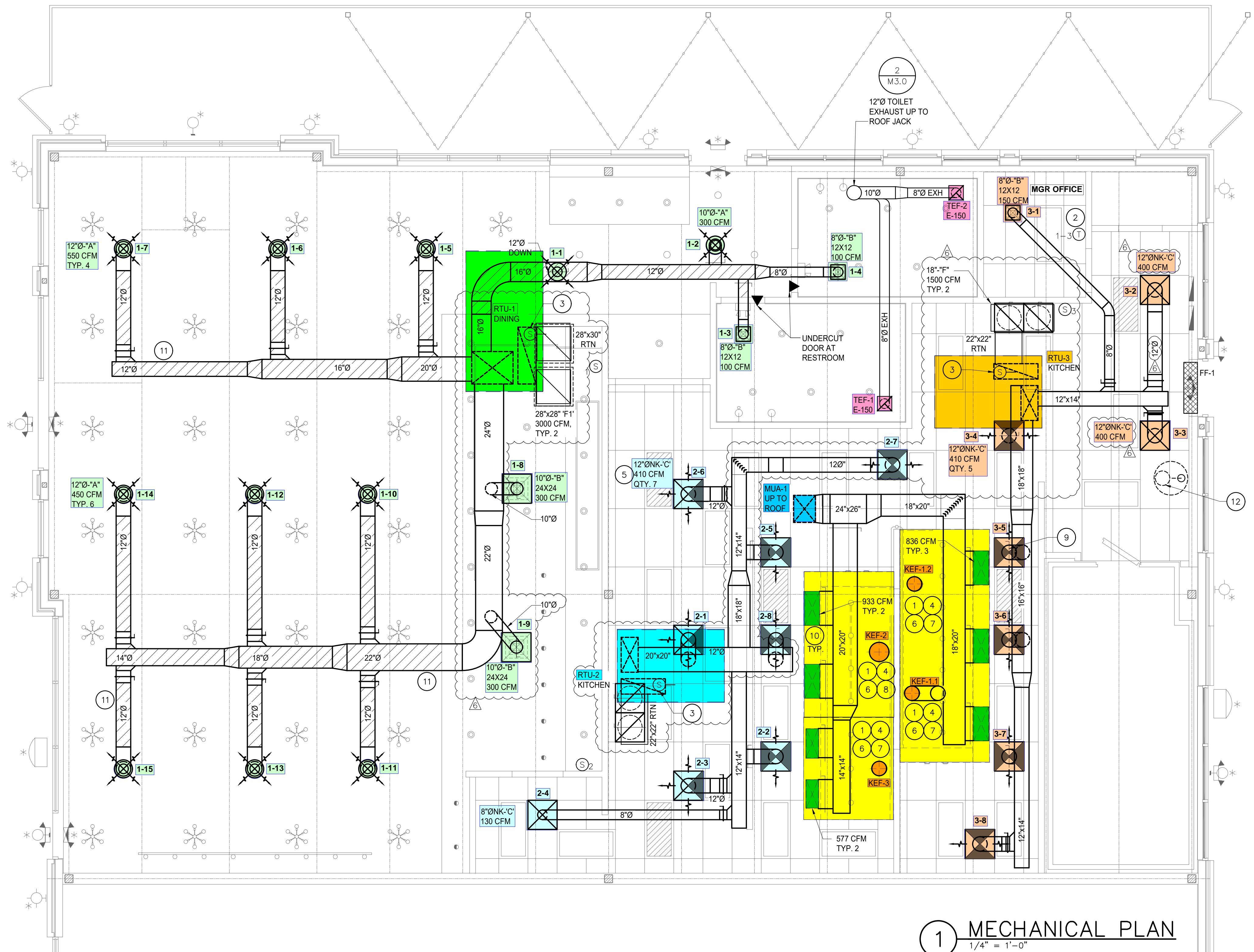
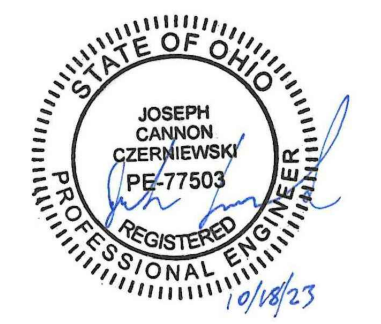
NOTE:  
MECHANICAL CONTRACTOR TO HAVE A REPRESENTATIVE ON SITE DURING THE PRE-OPENING (VIP PARTY) WITH ALL REQUIRED TOOLS TO ENSURE PROPER OPERATION OF MECHANICAL SYSTEM.

NOTE:  
DRAWINGS FOR HVAC WORK ARE DIAGRAMMATIC, SHOWING THE GENERAL LOCATION, TYPE, LAYOUT AND REQUIRED EQUIPMENT. DRAWINGS SHALL NOT BE SCALED FOR EXACT MEASUREMENTS. AS REQUIRED, REFER TO ARCHITECTURAL AND MANUFACTURER'S STANDARD INSTALLATION DRAWINGS FOR EQUIPMENT CONNECTIONS AND INSTALLATION REQUIREMENTS. FURNISH AND INSTALL DUCTWORK, CONNECTIONS, ACCESSORIES, OFFSETS, AND MATERIALS NECESSARY TO FACILITATE SYSTEM'S FUNCTIONING AS INDICATED BY THE DESIGN AND EQUIPMENT SHOWN ON PLANS.

MECHANICAL SYMBOLS	
	RECTANGULAR DUCT 18" WIDE BY 12" DEEP
	12" DIAMETER SPIRAL DUCT IN EXPOSED AREAS ONLY
	12" DIAMETER ROUND DUCT
	SUPPLY DUCT IN SECTION
	RETURN OR EXHAUST DUCT IN SECTION
	ELBOW WITH TURNING VANES
	TEE WITH TURNING VANES
	ROUND (OR OVAL) ELBOW
	SUPPLY AIR DIFFUSER WITH ROUND SUPPLY DUCT
	RETURN OR EXHAUST AIR DIFFUSER WITH ROUND DUCT
	T RTU# THERMOSTAT
	S RTU# REMOTE TEMPERATURE SENSOR
	▲ DOOR UNDERCUT
	FD FIRE DAMPER (FD)
	S SMOKE DETECTOR



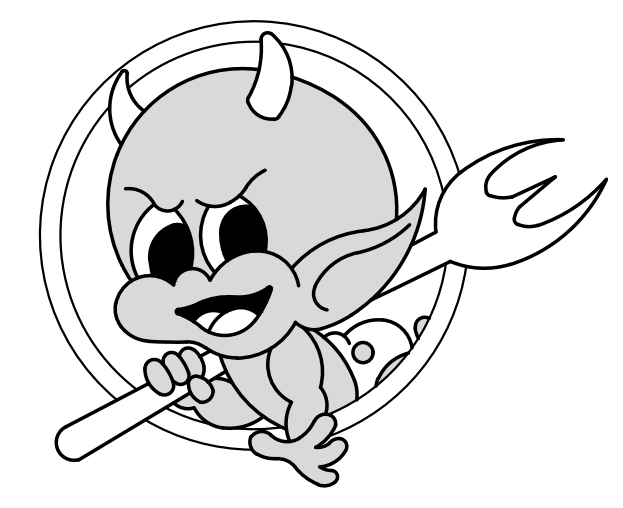
SEAL:



- KEYED NOTES:**
- ALL GREASE DUCT SHALL BE WELDED BLACK IRON OR WELDED STAINLESS STEEL WITH 2 LAYERS OF 1-HOUR Fyre-WRAP OR OTHER UL LISTED BARRIER TO PROVIDE ZERO CLEARANCE TO COMBUSTIBLE ENCLOSURE. SLOPE AT 1/4" PER FOOT BACK TO HOODS; GRIND INTERIOR SMOOTH TO ELIMINATE LOCATIONS FOR GREASE TO BUILD UP. DUCT SHALL BE FREE OF SAGS AND POOLING POINTS. REFER DETAIL 8 & 9/M3.0
  - PROVIDE THERMOSTAT AND MATCHING REMOTE SENSOR, WITH 24-7 PROGRAMMABLE CAPABILITY AND LIGHTSTAY OVERRIDE FOR NIGHT SETBACK MODE. LOCATE THERMOSTATS IN MANAGER'S OFFICE / AT MANAGER'S AREA, WITH REMOTE SENSORS WALL MOUNTED AS INDICATED ON PLANS. COORDINATE EXACT LOCATION WITH OWNER'S REPRESENTATIVE. SET HEAT AT @ 70° IN DINING, 70° IN KITCHEN. SET COOL AT @ 72° IN DINING, 78° IN KITCHEN.
  - PROVIDE RETURN AIR DUCT SMOKE DETECTOR, WITH REMOTE ANNUNCIATOR/TEST SWITCH TO BE MOUNTED AT A CONSTANTLY ATTENDED LOCATION AS APPROVED BY THE AHJ. DUCT DETECTOR SHALL BE ABLE TO COMMUNICATE WITH BUILDING FIRE CONTROL SYSTEM WHERE REQUIRED.
  - INTERLOCK KITCHEN EXHAUST FANS AND KITCHEN SUPPLY FAN TO RUN SIMULTANEOUSLY. INTERLOCK RTU-3 TO OPERATE ANYTIME EITHER KEF-1.1, KEF-1.2, KEF-2, KEF-3 ARE RUNNING.
  - PLASTIC TYPE SUPPLY DIFFUSER. ALL KITCHEN AREA.
  - PROVIDE SOLENOID SHUT-OFF FOR GAS LINE UNDER HOOD. WIRE TO AUTOMATICALLY SHUTOFF GAS SUPPLY (AND ELECTRIC SUPPLY - VIA SHUNT TRIPS OR CONTACTOR) TO EQUIPMENT UNDER HOOD WHEN FIRE IS DETECTED. SEE PLUMBING PLAN.
  - 12" EXHAUST DUCT UP TO KEF-1.1, KEF-1.2 & KEF-3 ON ROOF. TRANSITION TO EXHAUST FAN AS REQUIRED. TRANSITIONS SHALL BE PREFABRICATED. DUCT SHALL BE WELDED AND GROUND SMOOTH, WITH NO SEAMS FOR GREASE TO ACCUMULATE ON. SLOPE CONTINUOUSLY BACK TO HOOD AT MINIMUM 1/4" PER FOOT.
  - 16" EXHAUST DUCT UP TO KEF-2 ON ROOF. TRANSITION TO EXHAUST FAN AS REQUIRED. TRANSITIONS SHALL BE PREFABRICATED. DUCT SHALL BE WELDED AND GROUND SMOOTH, WITH NO SEAMS FOR GREASE TO ACCUMULATE ON. SLOPE CONTINUOUSLY BACK TO HOOD AT MINIMUM 1/4" PER FOOT.
  - EACH SUPPLY AIR DEVICE SHALL BE EQUIPPED WITH A VOLUME DAMPER. FOR DIFFUSERS IN HARD CEILINGS, VERIFY WITH PROJECT OWNER IF GRILLES SHALL BE ORDERED WITH VOLUME CONTROL IN FACE OF DIFFUSER, OR IF NECK DAMPERS WITH BOWDEN CONTROLS ARE PREFERRED (TYPICALLY A QUIETER OPTION). PROVIDE LINE ITEM UPCHARGE PRICE TO USE BOWDEN CABLES OVER FACE-MOUNTED AIR DEVICE CONTROLS. TYPICAL
  - EXTEND DUCT UP FROM HOOD COLLAR TO MAKE-UP AIR TRUNK DUCT. REFER TO M3.1-M3.6 FOR HOOD DRAWINGS AND ASSOCIATED COMPONENTS. TYPICAL
  - REFER TO ARCHITECTURAL DRAWINGS FOR ELEVATIONS. TYPICAL
  - WATER HEATER FLUE TO ROOF. OFFSET AS REQUIRED. REFER TO 3/M3.0.

1 MECHANICAL PLAN  
1/4" = 1'-0"

**TORCHYS TACOS**  
Liberty Way West  
7673 Blake Street, Suite 100  
Liberty Township, OH 45069



**ISSUE LOG:**

No.	Date	Description
1	10.18.23	RTU REVISION

MECHANICAL PLAN

PROJECT NUMBER:	2022-2
ISSUE DATE:	Sept. 2, 2022

M2.0

NOTE:  
ELECTRICAL CONTRACTOR TO PROVIDE DISCONNECT SWITCHES, CONDUIT, AND CONDUCTORS.

REFER TO SHEET E0.0 FOR EQUIPMENT SCHEDULE, ELECTRICAL INFORMATION, AND CIRCUIT NUMBERS. EQUIPMENT DESIGNATED WITH A HEXAGON KEY TAG.

NOTE:  
MECHANICAL CONTRACTOR TO HAVE A REPRESENTATIVE ON SITE DURING THE PRE-OPENING (VIP PARTY) WITH ALL REQUIRED TOOLS TO ENSURE PROPER OPERATION OF MECHANICAL SYSTEM.

NOTE:  
REFER TO GAS RISER ON SHEET MEP1.1 FOR PIPE SIZES.

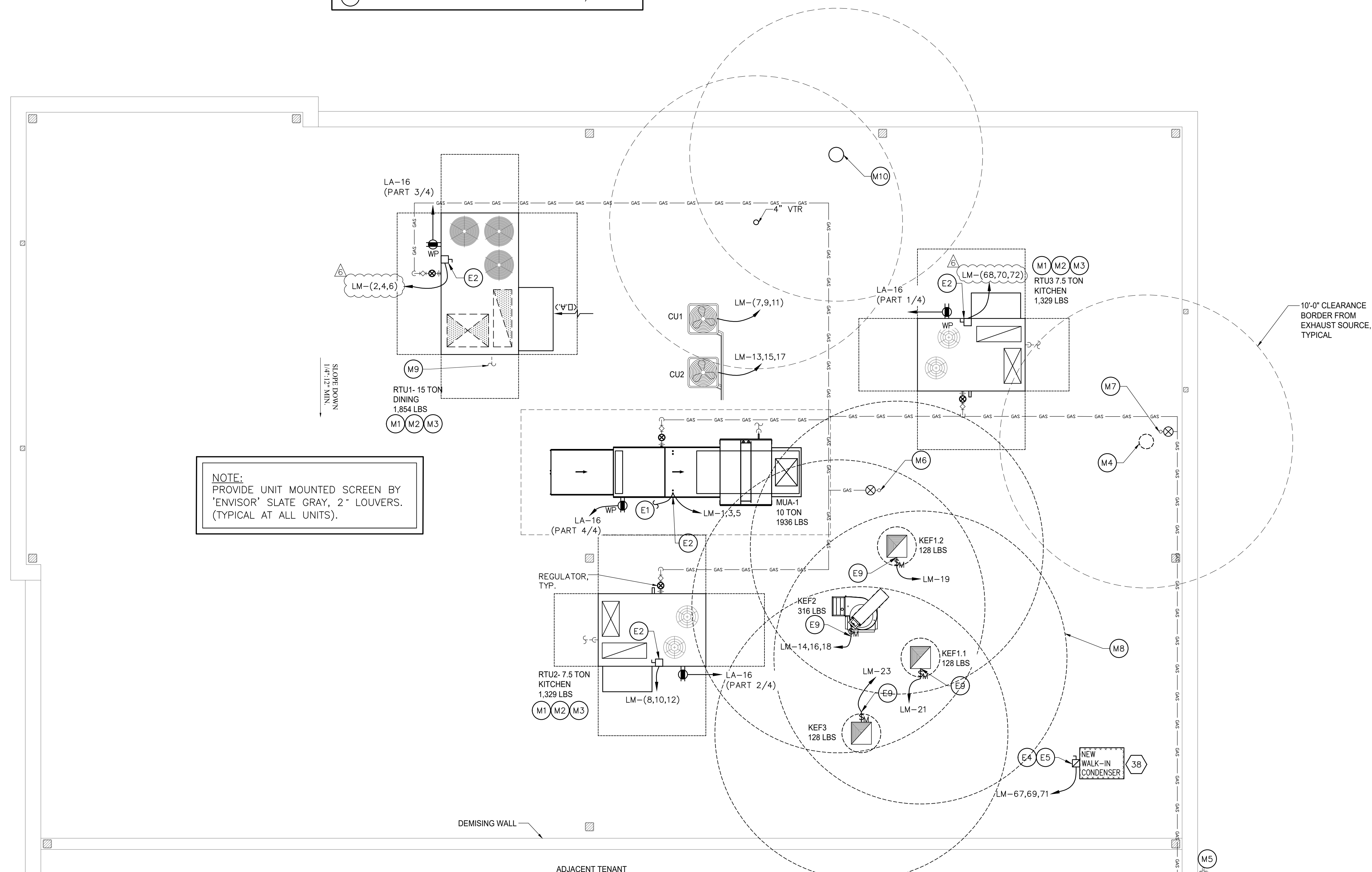
NOTE:  
MINIMUM GAS PIPE SIZE 3/4".

### MECHANICAL KEYNOTES

- (M1) G.C. SHALL VERIFY EXACT PLACEMENT OF NEW ROOFTOP UNIT WITH A STRUCTURAL ENGINEER PRIOR TO PLACING UNITS. COORDINATE SUPPLY AND RETURN ROOF DROPS THROUGH EXISTING STRUCTURAL FRAMING IN FIELD. DO NOT CUT JOISTS OR TRUSSES.
- (M2) ROOF-TOP EQUIPMENT IS DRAWN AND SHALL BE PLACED SUCH THAT THE DISTANCE BETWEEN SERVICEABLE HVAC EQUIPMENT AND BUILDING EDGE IS NOT LESS THAN 10'-0", UNLESS PARAPET IS 42" OR TALLER.
- (M3) FACTORY MOUNTED SMOKE DETECTOR WITHIN RETURN AIR PLENUM OF RTU. PROVIDE A LINE VOLTAGE RELAY WITH WIRING CONFIGURED TO SHUT DOWN UNIT UPON DETECTION OF SMOKE. PROVIDE LOW VOLTAGE WIRING TO REMOTE ANNUNCIATOR.
- (M4) CONCENTRIC FLUE UP THRU ROOF TO VENT CAP, FOR GAS WATER HEATER. INSTALL IN COMPLIANCE WITH ALL LOCAL CODES. REFER TO DETAIL 3/M3.0.
- (M5) NEW GAS METER  
1 1/4" GAS PIPE @ 2 PSI  
TOTAL LOAD: 2,015 MBH  
TOTAL DEVELOPED LENGTH: 150'-0" MAX
- (M6) GAS DOWN TO COOKLINE, 854 MBH. REGULATOR IN CEILING SPACE. REFER TO SHEET MEP1.1.
- (M7) GAS DOWN TO WATER HEATER, 199 MBH. REFER TO SHEET MEP1.2.
- (M8) CIRCLE AROUND FAN DENOTES 10'-0" CLEARANCE BORDER FROM EXHAUST SOURCE, TYPICAL.
- (M9) ROUTE CONDENSATE TO NEAREST ACCEPTABLE RECEPTICAL, TYPICAL.
- (M10) TOILET EXHAUST ROOF JACK. REFER TO DETAIL 2/M3.0.

### ELECTRICAL KEYNOTES

- (E1) CONTROLLED FROM THE HOOD CONTROL PANEL. REFER TO THE HOOD WIRING DRAWINGS FOR REQUIREMENTS AND DETAIL 2/E2.0 FOR CIRCUITING.
- (E2) E.C. SHALL PROVIDE POWER THRU CURB TO NON-FUSED DISCONNECT SWITCH PROVIDED BY MANUFACTURER. REFER TO MECHANICAL SHEETS FOR INFORMATION ON CONTROLS.
- (E3) NOT USED
- (E4) WALK-IN CONDENSING UNIT - PROVIDE FUSED DISCONNECT SWITCH, 30A, 250V, 3P, NEMA 3R WITH 15A FUSE. REFER TO EQUIPMENT SCHEDULE ON SHEET E0.0 FOR CIRCUITING.
- (E5) PROVIDE RACEWAY WIRING, ETC. AS REQUIRED FOR POWER AND CONTROL BETWEEN CONDENSING UNIT AND EVAPORATOR. COORDINATE WITH DIVISION 23.
- (E6) PROVIDE NON-FUSED DISCONNECT SWITCH, 30A, 600V, 3P, NEMA 3R.
- (E7) PROVIDE FUSED DISCONNECT SWITCH, 30A, 600V, 3P, NEMA 3R WITH 25A FUSE SIZED PER EQUIPMENT MANUFACTURER RECOMMENDATIONS.
- (E8) PROVIDE FUSED DISCONNECT SWITCH, 30A, 600V, 3P, NEMA 3R WITH 30A FUSE SIZED PER EQUIPMENT MANUFACTURER RECOMMENDATIONS.
- (E9) PROVIDE A MOTOR RATED SWITCH INSIDE EXHAUST FAN 30A, 120V, 1P. INSTALL IN NEMA 3R ENCLOSURE.



NOTE:  
PROVIDE UNIT MOUNTED SCREEN BY 'ENVISOR' SLATE GRAY, 2" LOUVERS. (TYPICAL AT ALL UNITS).

1 MEP ROOF PLAN  
1/4" = 1'-0"

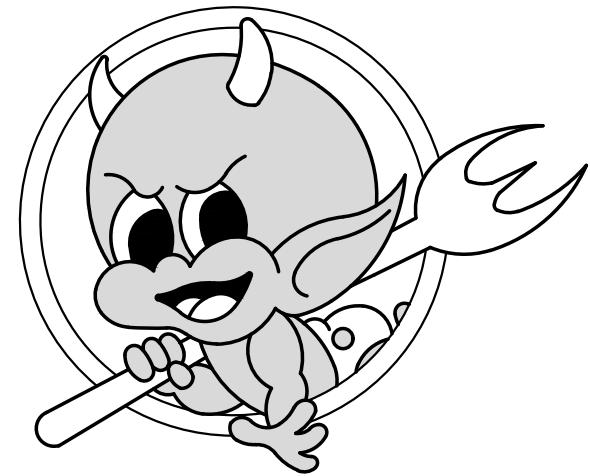


MPW ENGINEERING, LLC  
110 W. 9TH STREET • SUITE 600 • TOLEDO, OH 44119  
(419) 582-4008 • (419) 582-4007 FAX



# TORCHYS TACOS

Liberty Way West  
7673 Blake Street, Suite 100  
Liberty Township, OH 45069



#### ISSUE LOG:

No.	Date	Description
⚠	12.05.22	ZONING COMMENT
⚠	01.12.23	COUNTY COMMENT
⚠	09.07.23	OWNER REVISION
⚠	10.18.23	RTU REVISION

#### MEP ROOF PLAN

PROJECT NUMBER:	2022-2
ISSUE DATE:	Sept. 2, 2022

# MEP1.0