

FOR QUESTIONS, CALL THE
Dallas Office
REGION 45
PHONE: (214) 220-3999
EMAIL: reg45@captiveaire.com

PATENT NUMBERS
AC-PSP (UNITED STATES) - US PATENT 7963830 B2.
AC-PSP WALL (CANADA) - CA PATENT 2820509.
AC-PSP ISLAND (CANADA) - CA PATENT 2520330.

HOOD INFORMATION - JOB#5645591

HOOD NO	TAG	MODEL	MANUFACTURER	LENGTH	MAX COOKING TEMP	TYPE	APPLIANCE DUTY	DESIGN CFM/FT	TOTAL EXH CFM	EXHAUST PLENUM RISER(S)					TOTAL SUPPLY CFM	HOOD CONSTRUCTION	HOOD CONFIG	
										WIDTH	LENG	HEIGHT	DIA	CFM			VEL	SP
1		6030 ND-2-PSP-F	CAPTIVEAIRE	15' 0"	600 DEG	I	HEAVY	200	3000	4"	12"	1500	1910	-0.711'	2510	430 SS WHERE EXPOSED	ALONE	ALONE
2		6030 ND-2-PSP-F	CAPTIVEAIRE	9' 0"	600 DEG	I	HEAVY	275	2475	4"	16"	2475	1773	-0.953'	1866	430 SS WHERE EXPOSED	LEFT	ALONE
3		6030 ND-2-PSP-F	CAPTIVEAIRE	7' 0"	600 DEG	I	HEAVY	200	1400	4"	12"	1400	1783	-0.620'	1155	430 SS WHERE EXPOSED	RIGHT	ALONE

HOOD INFORMATION

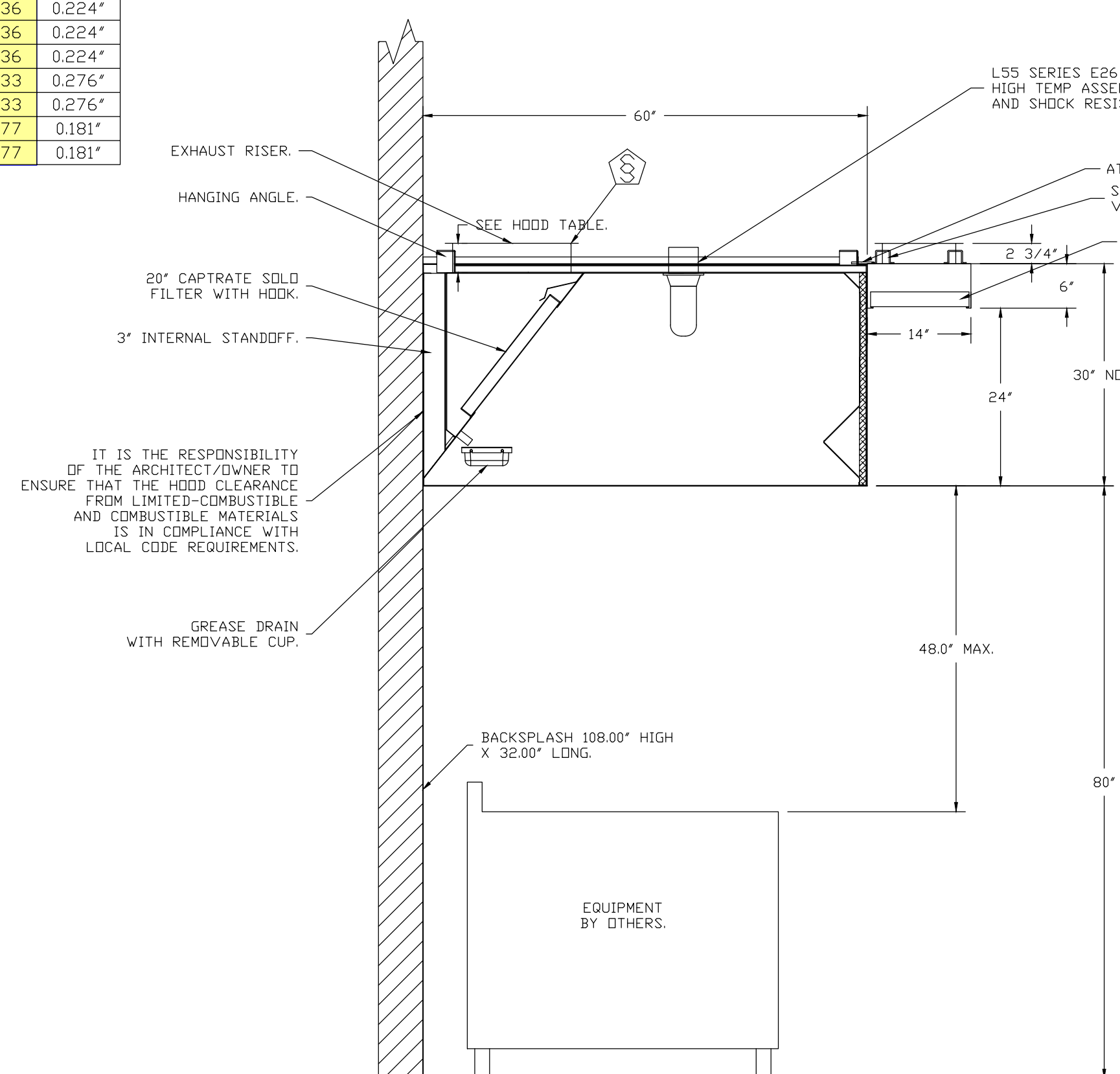
HOOD NO	TAG	FILTER(S)				LIGHT(S)				UTILITY CABINET(S)				FIRE SYSTEM	HOOD SYSTEM HANGING PIPING WEIGHT		
		TYPE	QTY	HEIGHT	LENGTH	EFFICIENCY @ 7 MICRONS	QTY	TYPE	WIRE GUARD	LOCATION	SIZE	TYPE	SIZE			ELECTRICAL	SWITCHES
1		CAPTRATE SOLD FILTER	11	20"	16"	85% SEE FILTER SPEC	7	L55 SERIES E26	NO	LEFT	12"x60"x30"					YES	1031 LBS
2		CAPTRATE SOLD FILTER	6	20"	16"	85% SEE FILTER SPEC	4	L55 SERIES E26	NO	LEFT	12"x60"x30"	TANK FS	4.0/4.0	DCV-4111	1 LIGHT 1 FAN	YES	885 LBS
3		CAPTRATE SOLD FILTER	5	20"	16"	85% SEE FILTER SPEC	3	L55 SERIES E26	NO							YES	479 LBS

HOOD OPTIONS

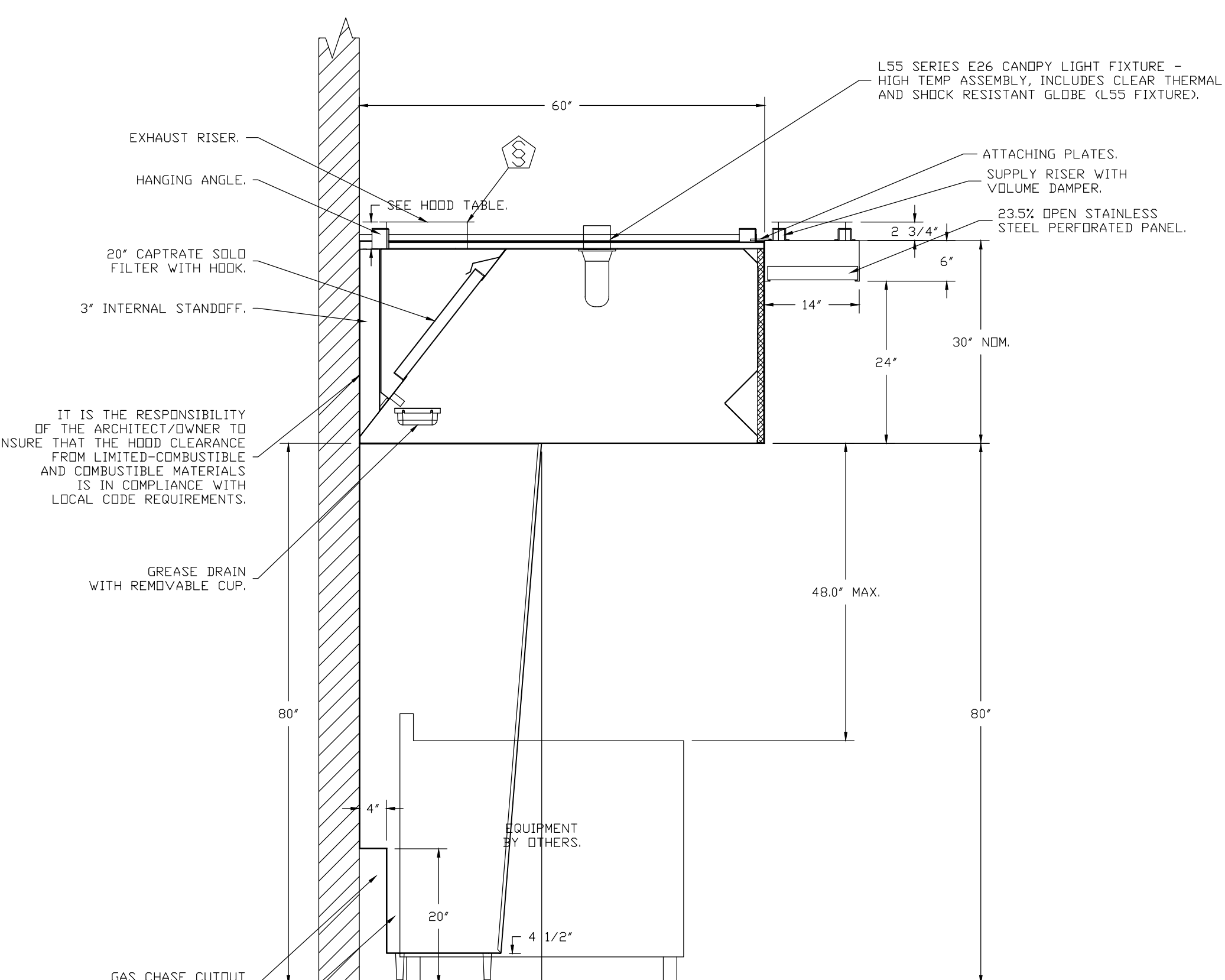
HOOD NO	TAG	OPTION
1		BACKSPLASH 108.00" HIGH X 277.00" LONG 430 SS VERTICAL. STRUCTURAL FRONT PANEL. RISER SENSOR INSTALL 6IN PLEN. RIGHT VERTICAL END PANEL 27" TOP WIDTH, 21" BOTTOM WIDTH, 80" HIGH INSULATED 430 SS.
2		BACKSPLASH 108.00" HIGH X 277.00" LONG 430 SS VERTICAL. BACKSPLASH 108.00" HIGH X 275.00" LONG 430 SS VERTICAL. BACKSPLASH 108.00" HIGH X 32.00" LONG 430 SS VERTICAL. BACKSPLASH - INSIDE CORNER 108.00" HIGH X 2.00" LEG LENGTH 430 SS VERTICAL. RISER SENSOR INSTALL 3IN DBL. RISER SENSOR INSTALL 6IN PLEN.
3		RIGHT VERTICAL END PANEL 27" TOP WIDTH, 21" BOTTOM WIDTH, 80" HIGH INSULATED 430 SS.

PERFORATED SUPPLY PLENUM(S)

HOOD NO	TAG	PDS	LENGTH	WIDTH	HEIGHT	TYPE	RISER(S)				
							WIDTH	LENG	DIA	CFM	SP
1		Front	192"	14"	12"	MJA	12"	28"		836	0.224'
						MJA	12"	28"		836	0.224'
						MJA	12"	28"		836	0.224'
2		Front	120"	14"	6"	MJA	12"	28"		933	0.276'
						MJA	12"	28"		933	0.276'
3		Front	84"	14"	6"	MJA	10"	24"		577	0.181'
						MJA	10"	24"		577	0.181'



SECTION VIEW - MODEL 6030ND-2-PSP-F
HOOD - #2



SECTION VIEW - MODEL 6030ND-2-PSP-F
HOOD - #3

REVISIONS

DESCRIPTION	DATE

CAPTIVEAIRE
 Dallas Office
 1901 Royal Lane Suite 101, DALLAS, TX, 75229 PHONE: (214) 220-3999 FAX: (214) 220-0099 EMAIL: reg45@captiveaire.com

Torchy's Taco 9 15 Liberty Township OH
 7650 Liberty Way,
 LIBERTY TOWNSHIP, OH, 45069

DATE: 9/15/2022
DWG.#: 5645591
DRAWN BY: DJL-45
SCALE: 3/4" = 1'-0"
MASTER DRAWING
SHEET NO.
 1

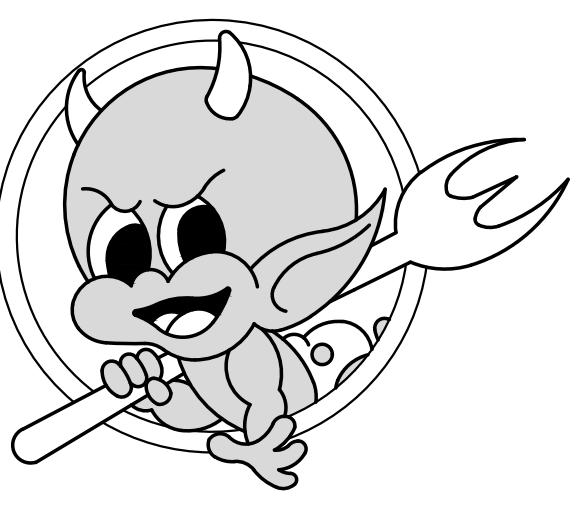


MPW ENGINEERING, LLC
110 W. 7TH STREET • SUITE 600 • TULSA, OK 74119
(918) 582-4068 • (918) 582-4057 FAX

SEAL:



Liberty Way West
7673 Blake Street, Suite 100
Liberty Township, OH 45069



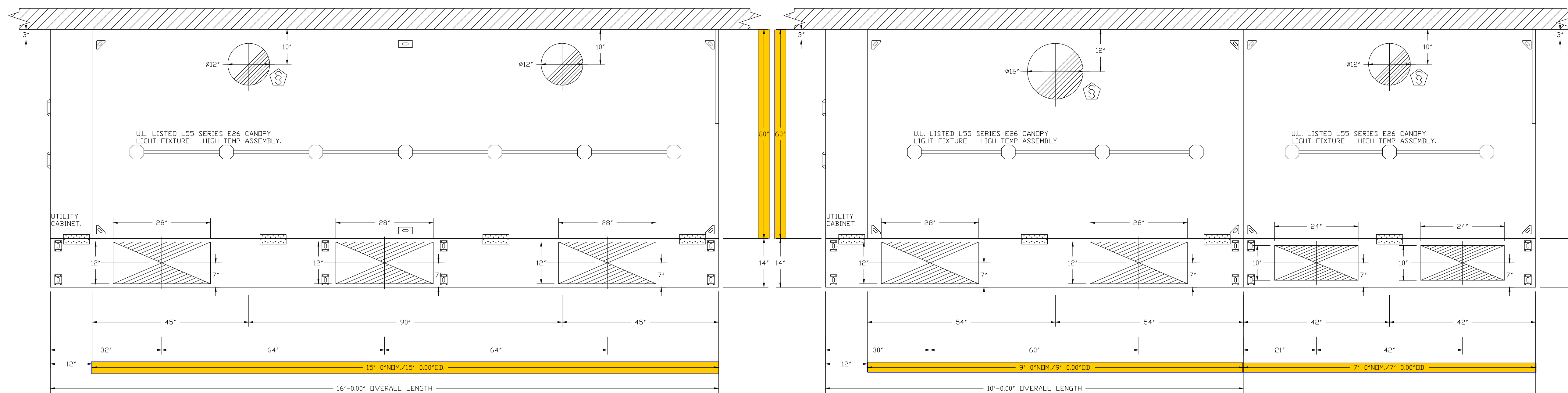
ISSUE LOG:

No.	Date	Description

HOOD DETAILS

PROJECT NUMBER:	2022-2
ISSUE DATE:	Sept. 2, 2022

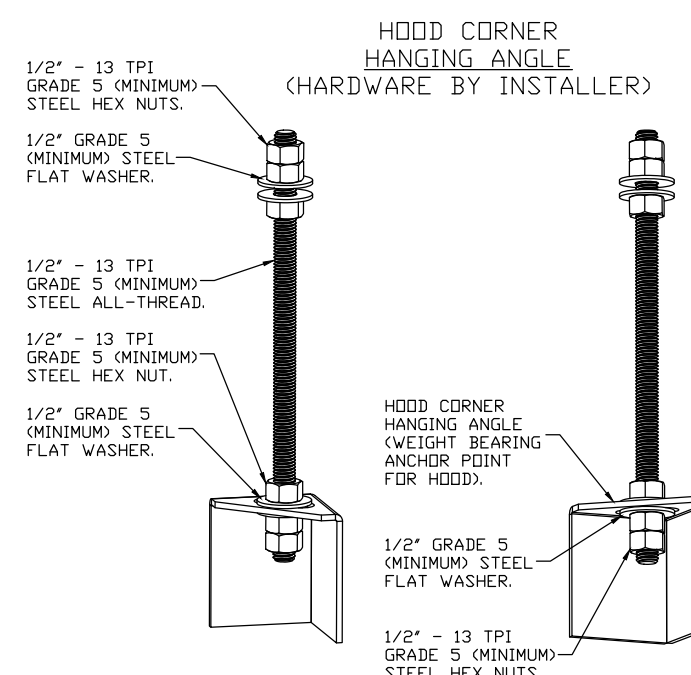
M3.1



PLAN VIEW - HOOD #1
15' 0.00" LONG 6030ND-2-PSP-F
NOTE: ADDITIONAL HANGING ANGLES PROVIDED FOR HOODS 12" AND LONGER.

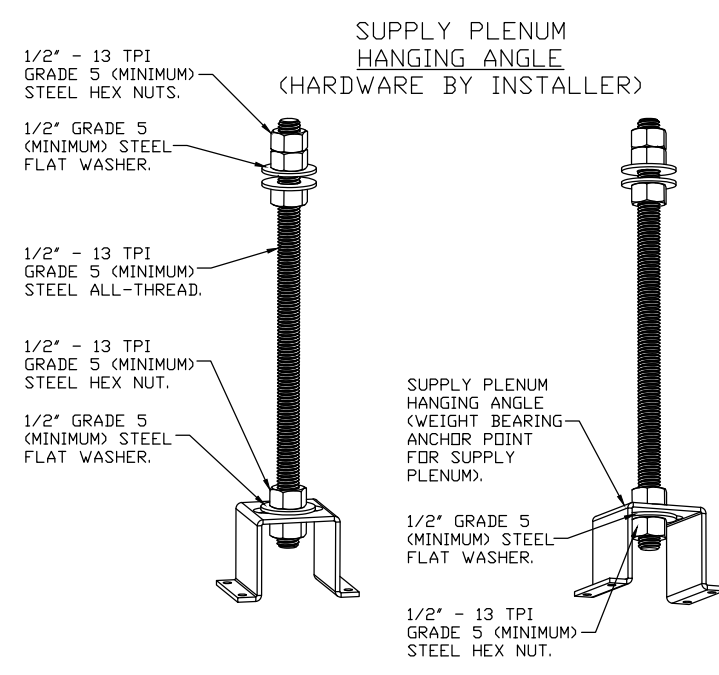
PLAN VIEW - HOOD #2
9' 0.00" LONG 6030ND-2-PSP-F

PLAN VIEW - HOOD #3
7' 0.00" LONG 6030ND-2-PSP-F



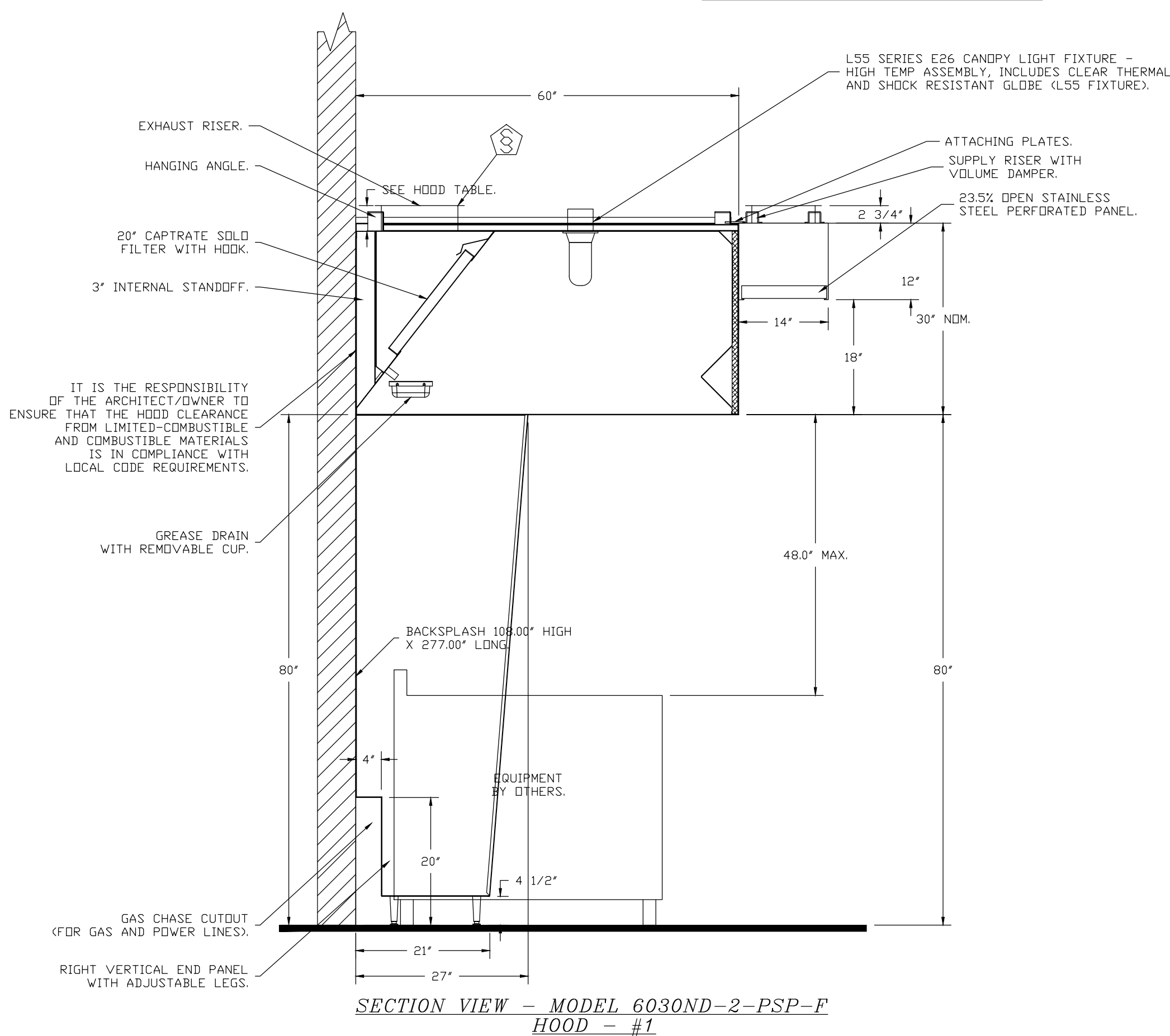
ASSEMBLY INSTRUCTIONS

HANGING ANGLE MUST BE SUPPORTED WITH 1/2" - 13 TPI GRADE 5 (MINIMUM) ALL-THREAD. SANDWICH HANGING ANGLES AND CEILING ANCHOR POINTS WITH 1/2" GRADE 5 (MINIMUM) STEEL FLAT WASHERS AND 1/2" - 13 TPI GRADE 5 (MINIMUM) HEX NUTS AS SHOWN. MUST USE DOUBLED HEX NUT CONFIGURATION BENEATH HOOD HANGING ANGLES AND ABOVE CEILING ANCHORS. MAINTAIN 1/4" OF EXPOSED THREADS BENEATH BOTTOM HEX NUT. TORQUE ALL HEX NUTS TO 57 FT-LBS.



ASSEMBLY INSTRUCTIONS

HANGING ANGLE MUST BE SUPPORTED WITH 1/2" - 13 TPI GRADE 5 (MINIMUM) ALL-THREAD. SANDWICH HANGING ANGLES AND CEILING ANCHOR POINTS WITH 1/2" GRADE 5 (MINIMUM) STEEL FLAT WASHERS AND 1/2" - 13 TPI GRADE 5 (MINIMUM) HEX NUTS AS SHOWN. MUST USE DOUBLED HEX NUT CONFIGURATION ABOVE CEILING ANCHORS. SINGLE HEX NUT BENEATH HANGING ANGLE IS ACCEPTABLE FOR PSP HANGING ANGLES. MAINTAIN 1/4" OF EXPOSED THREADS BENEATH BOTTOM HEX NUT. TORQUE ALL HEX NUTS TO 57 FT-LBS.



SECTION VIEW - MODEL 6030ND-2-PSP-F
HOOD - #1

IT IS THE RESPONSIBILITY OF THE ARCHITECT/OWNER TO ENSURE THAT THE HOOD CLEARANCE FROM LIMITED-COMBUSTIBLE AND COMBUSTIBLE MATERIALS IS IN COMPLIANCE WITH LOCAL CODE REQUIREMENTS.

REVISIONS	
DESCRIPTION	DATE

CAPTIVE
 Dallas Office
 1901 Royal Lane Suite 101, DALLAS, TX, 75229 PHONE: (214) 220-3999 FAX: (214) 220-0099 EMAIL: reg45@captivair.com
 www.captivair.com

Torchy's Taco 9 7 15 Liberty Township OH
 7650 Liberty Way,
 LIBERTY TOWNSHIP, OH, 45069

DATE: 9/15/2022

DWG.#:
5645591

DRAWN BY:
DJL-45

SCALE:
3/4" = 1'-0"

MASTER DRAWING

SHEET NO.
2

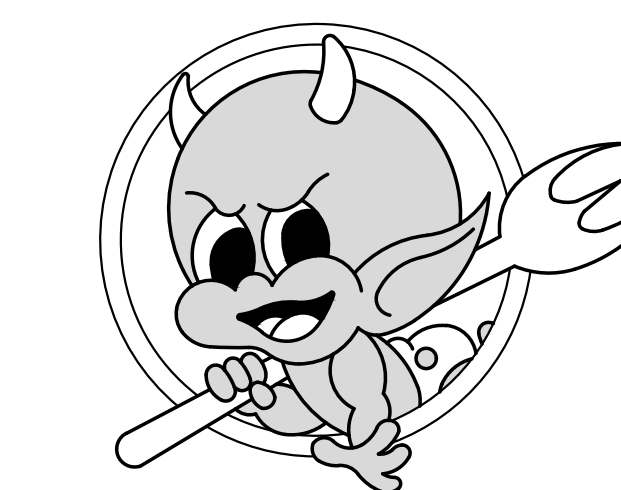


MPW ENGINEERING, LLC
110 W. 7TH STREET • SUITE 600 • TULSA, OK 74119
(918) 582-4008 • (918) 582-4007 FAX

SEAL:



Liberty Way West
7673 Blake Street, Suite 100
Liberty Township, OH 45069



ISSUE LOG:

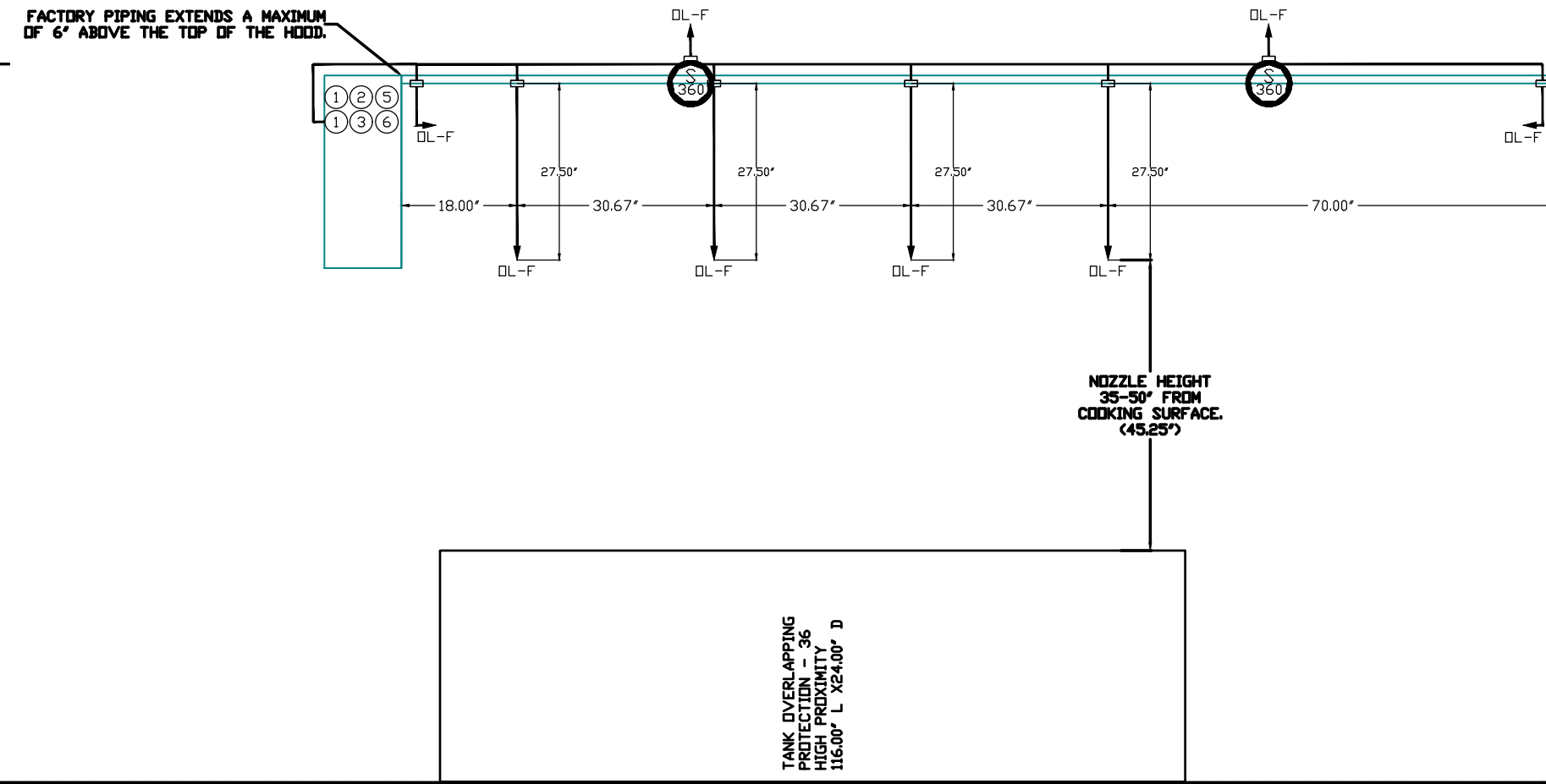
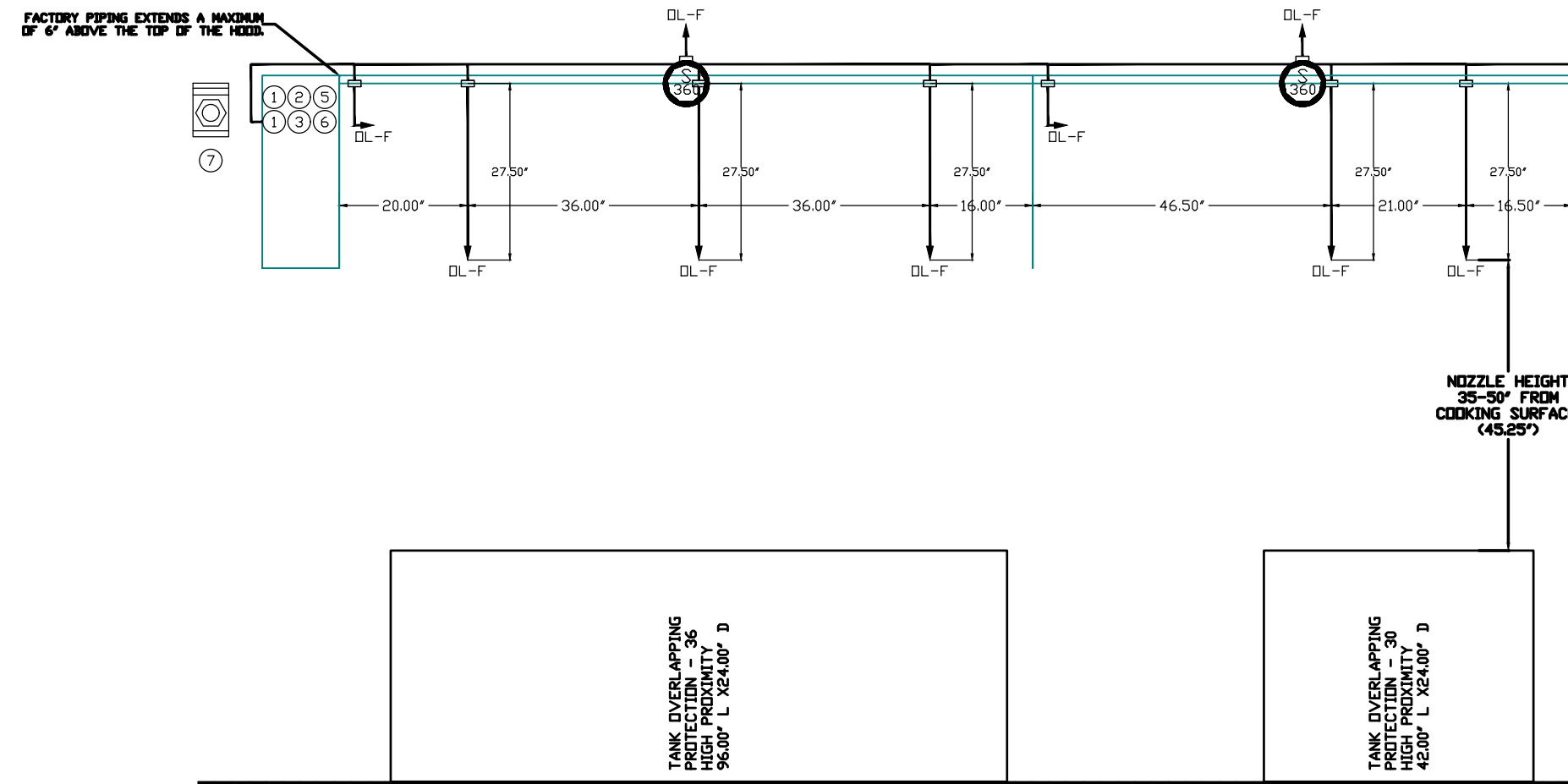
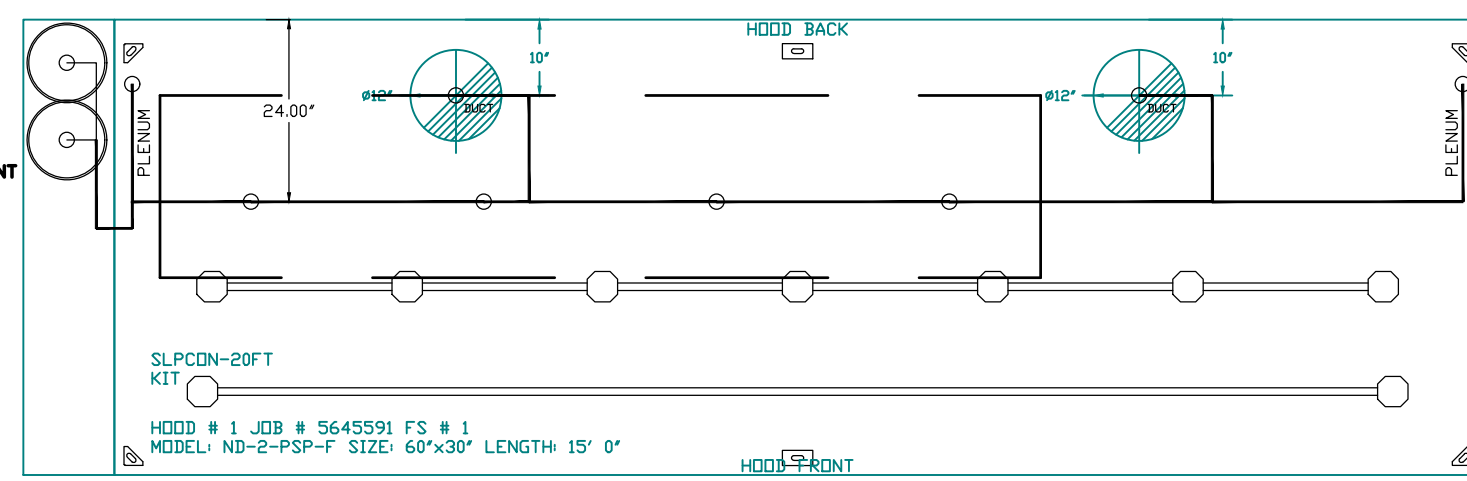
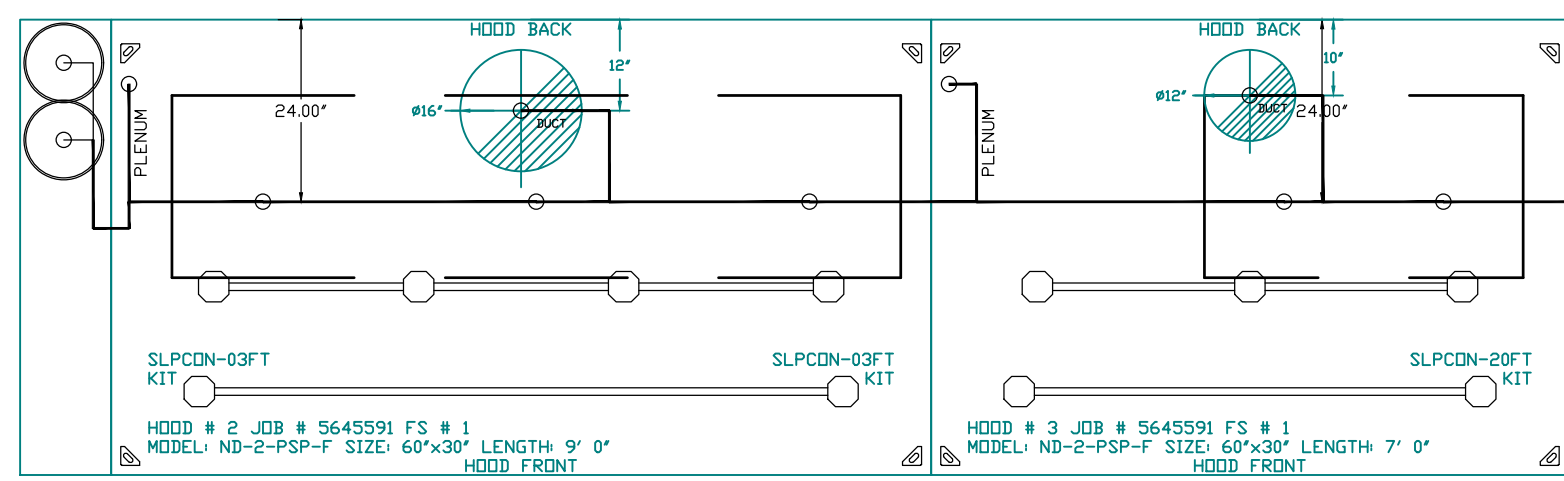
No.	Date	Description

HOOD DETAILS

PROJECT NUMBER: 2022-2

ISSUE DATE: Sept. 2, 2022

M3.2



INCLUDES FIELD INSTALLATION AND HOOKUP DURING NORMAL BUSINESS HOURS BY CERTIFIED INSTALLERS ONLY IN THE LOCATION NOTED ABOVE. TWO SITE VISITS ONLY ONE VISIT TO SET PULL STATION & SYSTEM HOOKUP AND ONE VISIT FOR ONE TEST. ADDITIONAL VISITS WILL RESULT IN ADDITIONAL CHARGES. ONE MECHANICAL OR ELECTRICAL GAS VALVE PER SYSTEM AT A MAXIMUM SIZE OF 2\"/>

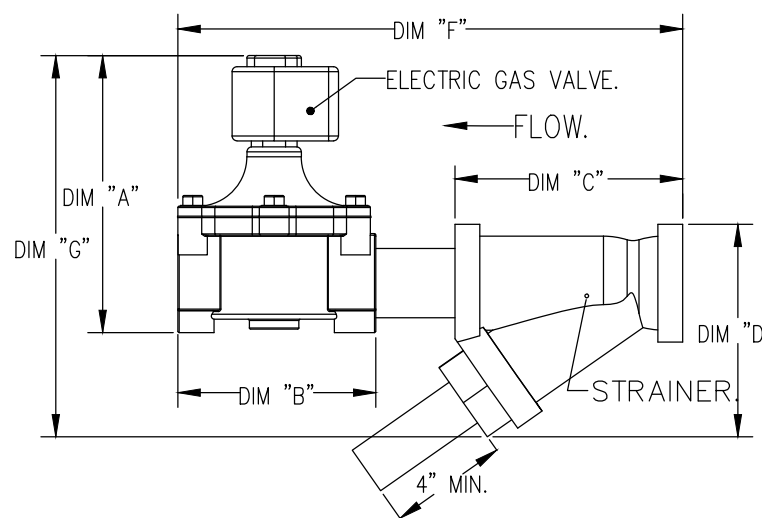
TANK OVER APPLIANCE PROTECTION - 36\"/>

TANK OVER APPLIANCE PROTECTION - 36\"/>

TANK OVER APPLIANCE PROTECTION - 36\"/>

GAS VALVES AND STRAINERS																
TYPE	SIZE	VOLTAGE	GAS VALVE SIZING			GAS VALVE DIMENSIONS						INSTALLATION		PART NUMBERS		
			MIN. INLET PRESSURE (0 IN.W.C.)	MAX. INLET PRESSURE (138 IN.W.C.)	FLOW AT 1 IN.W.C. DROP (SCFH)	DIM "A"	DIM "B"	DIM "C"	DIM "D"	DIM "E"	DIM "F"	DIM "G"	MOUNTING ORIENTATION	GAS VALVE PART NUMBER	STRAINER PART NUMBER	GAS VALVE STRAINER KIT
ELECTRICAL	2"	120 VAC	0 PSIG (0 IN.W.C.)	5 PSIG (0.38 IN.W.C.)	2,940,550 BTU/HR	1,208.048	7-5/8"	6-3/8"	7-1/4"	7-13-1/4"	15-5/8"	13-15/16"	HORIZONTAL	8214280	4417468	(SC020A2)

ALL GAS VALVES/STRAINERS PROPER CLEARANCE MUST BE PROVIDED IN ORDER TO SERVICE THE STRAINERS. MINIMUM CLEARANCE DISTANCE MUST BE PROVIDED AT THE BASE OF THE STRAINER. CUSTOMER MUST VERIFY ALL DIMENSIONS AS WELL AS PRESSURE RATING. SPECIFIC GRAVITY OF NATURAL GAS = 0.64. SPECIFIC GRAVITY OF LP = 1.52.



FIRE SYSTEM INFORMATION - JOB#5645591						
FIRE SYSTEM NO.	TAG	TYPE	SIZE	FLOW POINTS	INSTALLATION	
					SYSTEM	LOCATION ON HOOD
1		TANK FS	4.0/4.0	70	FIRE CABINET LEFT	LEFT, HOOD 2
			4.0/4.0		FIRE CABINET LEFT	LEFT, HOOD 1

GAS VALVE(S)				
FIRE SYSTEM NO.	TAG	TYPE	SIZE	SUPPLIED BY
1	SC	ELECTRICAL	2.000	CAPTIVEAIRE SYSTEMS

FIRE SYSTEM PARTS LIST KEY					
FIRE SYSTEM NO.	TAG	KEY NUMBER	PART DESCRIPTION	QTY BY FACTORY	QTY BY DIST
		0 - 0	TANK FIRE SUPPRESSION POST-DISCHARGE PROCEDURE UTILITY CABINET LABEL SHEET.	1	0
		0 - 0	TANK FIRE SUPPRESSION MAINTENANCE GUIDE UTILITY CABINET LABEL SHEET.	1	0
		0 - 0	18-FB001-38144-0T-360 DUCT FIRE THERMOSTAT WITH 12 FOOT WIRE LEADS. ND. CLOSE ON TEMP RISE AT 360°F.	4	0
		0 - 0	361091 3/8" BRASS PLUGS	3	0
		0 - 0	79425 3/8" NPT FEMALE TO 1/2" MALE PRESSURE ADAPTER.	3	0
		0 - 0	87-10042-001 SECONDARY ACTUATOR VALVE (CSVA) - SINGLE ACTUATOR, REQUIRES PRIMARY RELEASE ACTUATOR, TANK FIRE SUPPRESSION.	2	0
		0 - 0	87-12045-001 HOSE, SECONDARY ACTUATOR HOSE, 75' BRAIDED STAINLESS STEEL, TANK FIRE SUPPRESSION.	2	0
		0 - 0	87-30001-001 TANK - PRESSURIZED TANK USED FOR TANK FIRE SUPPRESSION.	4	0
		0 - 0	87-30003-001 PRIMARY ACTUATOR KIT (PAK) - ACTUATOR AND RELEASE BOLDENED ASSEMBLY, ONE NEEDED PER FIRE SYSTEM, SUPERVISED, TANK FIRE SUPPRESSION.	2	0
		0 - 0	87-20012-001 HARDWARE, SVA BOLTS, TANK FIRE SUPPRESSION.	16	0
		0 - 0	905450PC PRO PRESS 1/2 PRESS 1/2 PRESS 90 ELBOW LB	14	0
		0 - 0	90920PC PRO PRESS P0611 1/2 PRESS TEE LB.	16	0
		0 - 0	98694A110 HARDWARE, DATANKLOCK LOCKING BRACKET SQUARE NUTS 5/16" ZINC, TANK FIRE SUPPRESSION.	8	0
		0 - 0	A003432 JUNCTION BOX FOR MANUAL PULL STATION, 15" DEEP BACK BOX, RED COLOR.	2	0
		0 - 0	B1145 3/8" BLACK IRON 90 ELL.	8	0
		0 - 0	DATANKLOCK DISCHARGE ADAPTER TANK LOCKING PLATE FOR FIRE SYSTEM TANK INSTALLATION IN UTILITY CABINETS, TANK FIRE SUPPRESSION.	4	0
		0 - 0	SLPCDN-03FT SUPERVISED LDDP CONNECTION KIT. CONTAINS THE PARTS NEEDED TO CONNECT THE SUPERVISED LDDP BETWEEN END TO END HOODS WITH LESS THAN A 2" GAP. KIT CONTAINS 3 FEET OF BLACK MG WIRE, 5 FEET OF TAN MG WIRE, 3 FEET OF FLEXIBLE CONDUIT, AND TWO 7/8" CONNECTORS.	2	0
		0 - 0	SLPCDN-20FT SUPERVISED LDDP CONNECTION KIT. CONTAINS THE PARTS NEEDED TO CONNECT THE SUPERVISED LDDP BETWEEN HOODS WITH UP TO 19' GAP. KIT CONTAINS 22 FEET OF BLACK MG WIRE, 22 FEET OF TAN MG WIRE, 20 FEET OF FLEXIBLE CONDUIT, AND TWO 7/8" CONNECTORS.	2	0
		0 - 0	TANK STRAP TANK STRAP - USED FOR TANK FIRE SUPPRESSION.	12	0
		0 - 0	TFS-TANKBRACKET TANK BRACKET FOR FIRE SYSTEM TANK INSTALLATION IN UTILITY CABINETS, TANK FIRE SUPPRESSION.	4	0
		0 - 0	WK-28952-000 DISCHARGE ADAPTER, TANK FIRE SUPPRESSION.	4	0
		16 - 16	79210 1/2" X 3/8" NPT MALE ADAPTER, VIEGA.	17	0
		16 - 16	DL-F NOZZLE - TANK PROTECTION APPLIANCE COVERAGE NOZZLE (INCLUDES METAL BLOW OFF CAP, LANYARD, USED WITH CHROME-PLATED PIPE) - 4 FLOW POINTS.	17	0
		26 - 26	OSA-3/8 QUIK SEAL - 3/8" (UL).	17	0
		34 - 34	A003431 24VDC SINGLE ACTION MANUAL ACTUATION DEVICE (PUSH/PULL STATION) WITH PROTECTIVE COVER, ONE (1) NORMALLY OPEN CONTACT, RED COLOR.	2	0

- NOTES
- FIELD PIPE DROPS AS SHOWN
 - PIPING, ELBOWS, TEES, AND NOZZLES SUPPLIED BY CAS.
 - FIELD INSTALLED DROP FACTORY WILL PROVIDE QTY 2 60IN LONG PIECES OF CHROME PLATED PIPING SHIPPED LOOSE TO BE FIELD-INSTALLED.
 - SHIP LOOSE DROP FACTORY WILL PROVIDE THE EXACT CHROME PIPE LENGTH NEEDED SHIPPED LOOSE TO BE FIELD-INSTALLED.
 - RELOCATE NOZZLES IF FLOW PATTERN IS BLOCKED BY SHELVEING, SALAMANDERS, ETC.
 - OVERLAPPING COVERAGE SHALL NOT BE USED ON ANY APPLIANCE WITH AN OBSTRUCTION.
 - IF APPLICABLE, EXTENDED PRE-PIPED DROPS ARE SHIPPED LOOSE.
 - FACTORY PIPING EXTENDS A MAXIMUM OF 6' ABOVE THE TOP OF THE HOOD.
 - APPLIANCE DIMENSIONS LISTED REPRESENT THE COOKING SURFACE SIZE, NOT THE OVERALL APPLIANCE SIZE.
 - THIS FIRE SYSTEM COMPLIES WITH U.L. 300 REQUIREMENTS.
 - DL-F NOZZLE PART NUMBER REPLACES 3070-3/8H-10-SS
 - JOB # 5645591
 - JOB NAME: TORCHYS TACO 9 7 15 LIBERTY TOWNSHIP OH.

SYSTEM SIZE: TANK-SP-2 WITH REMOTE TANK-SP-2 TOTAL FP REQUIRED: 70.
 HOOD # 1 15' 0.00' LONG X 60' WIDE X 30" HIGH.
 RISER # 1 SIZE: 12" DIA.
 RISER # 2 SIZE: 12" DIA.
 HOOD # 1 METAL BLOW-OFF CAPS INCLUDED.
 HOOD # 2 30' 0.00' LONG X 60' WIDE X 30" HIGH.
 RISER # 1 SIZE: 16" DIA.
 HOOD # 2 METAL BLOW-OFF CAPS INCLUDED.
 HOOD # 3 7' 0.00' LONG X 60' WIDE X 30" HIGH.
 RISER # 1 SIZE: 12" DIA.
 HOOD # 3 METAL BLOW-OFF CAPS INCLUDED.

- HEAVY-DUTY APPLIANCES (RATED 600°F) WILL REQUIRE AN ADDITIONAL DOWNSTREAM FIRESTAT IN THE EVENT THAT THE DUCTWORK CONTAINS ANY HORIZONTAL RUNS OVER 25 FT IN LENGTH.
 - MEDIUM TO LIGHT-DUTY APPLIANCES (RATED 450°F) WILL NOT REQUIRE ANY ADDITIONAL DOWNSTREAM DETECTION.

LEGEND - FIRE CABINET TANK SYSTEM

- 1 4 GALLON TANK.
- 2 PRIMARY ACTUATOR RELEASE.
- 3 SECONDARY ACTUATOR RELEASE.
- 4 FIRE-SUPPRESSION SUPERVISION SWITCH.
- 5 PRIMARY HOSE ASSEMBLY.
- 6 SECONDARY HOSE ASSEMBLY.
- 7 REMOTE MANUAL ACTUATION DEVICE.

REVISIONS

DESCRIPTION	DATE:

CAPTIVEAIRE

Dallas Office
 1901 Royal Lane Suite 101, DALLAS, TX, 75229 PHONE: (214) 220-3899 FAX: (214) 220-0099 EMAIL: reg@captivaire.com

Torchy's Taco 9 7 15 Liberty Township OH
 7650 Liberty Way,
 LIBERTY TOWNSHIP, OH, 45069

DATE: 9/15/2022
 DWG.#: 5645591
 DRAWN BY: DJL-45
 SCALE: 1/2" = 1'-0"
 MASTER DRAWING
 SHEET NO. 3



MPW ENGINEERING, LLC
 110 W. 7TH STREET • SUITE 600 • TULSA, OK 74119
 (918) 582-4000 • (918) 582-4007 FAX

SEAL:



TORCHYS TACOS

Liberty Way West
 7673 Blake Street, Suite 100
 Liberty Township, OH 45069

ISSUE LOG:

No.	Date	Description

HOOD DETAILS

PROJECT NUMBER:	2022-2
ISSUE DATE:	Sept. 2, 2022

M3.3

EXHAUST FAN INFORMATION - JOB#5645591

FAN UNIT NO	TAG	QTY	FAN UNIT MODEL #	MANUFACTURER	CFM	ESP	RPM	MOTOR ENCL	HP	BHP	PHASE	VOLT	FLA	DISCHARGE VELOCITY	WEIGHT (LBS)	SDNES
1	1.1	1	DUBSHFA	CAPTIVEAIRE	1500	1.000	1282	TEAD-ECM	1.000	0.3740	1	115	11.6	475 FPM	92	10.4
2	1.2	1	DUBSHFA	CAPTIVEAIRE	1500	1.000	1282	TEAD-ECM	1.000	0.3740	1	115	11.6	475 FPM	92	10.4
3	2	1	CASRE18DD	CAPTIVEAIRE	2475	1.500	1288	DDP	2.000	1.0710	3	208	5.9	1435 FPM	286	
4	3	1	DUBSHFA	CAPTIVEAIRE	1400	1.000	1254	TEAD-ECM	1.000	0.3510	1	115	11.6	443 FPM	92	9.7

CONDENSER DETAILS

FAN UNIT NO	TAG	FAN UNIT MODEL #	CONDENSER NO	TONNAGE	VOLTAGE	PHASE	FREQUENCY	MCA	RLA	MAX FUSE SIZE	MIN WIRE SIZE	SEER
5	MUA-1	A3-D.500-25Z-MPU	1	5	208-230	3 PHASE	60 HZ	21.4 AMPS	17.4 AMPS	30 AMPS	10 AWG	14
			2	5	208-230	3 PHASE	60 HZ	21.4 AMPS	17.4 AMPS	30 AMPS	10 AWG	14

MUA FAN INFORMATION - JOB#5645591

FAN UNIT NO	TAG	QTY	FAN UNIT MODEL #	BLOWER	HOUSING	MIN CFM	DESIGN CFM	ESP	RPM	MOTOR ENCL	HP	BHP	PHASE	VOLT	FLA	MCA	MDCP	WEIGHT (LBS)	SDNES
5	MUA-1	1	A3-D.500-25Z-MPU	25Z-3-MOD	A3-D.500	3600	5531	0.500	1429	DDP-ECM	4.800	3.5650	3	208	11.5	14.4A	25A	1822	13.4

COILS - JOB#5645591

FAN UNIT NO	TAG	COIL TYPE	DESIGN CFM	COOLING												
				ENTERING DB TEMP	ENTERING WB TEMP	LEAVING DB TEMP	LEAVING WB TEMP	ENTERING FLUID TEMP	LEAVING FLUID TEMP	FLUID FLOW RATE	PERCENT GLYCOL	TOTAL CAPACITY	SENSIBLE CAPACITY	LATENT CAPACITY		
5	MUA-1	DX	5531	88.0°F	73.0°F	76.6°F	67.8°F	---	---	---	---	---	---	102.8 MBH	65.3 MBH	37.5 MBH

GAS FIRED MAKE-UP AIR UNIT(S)

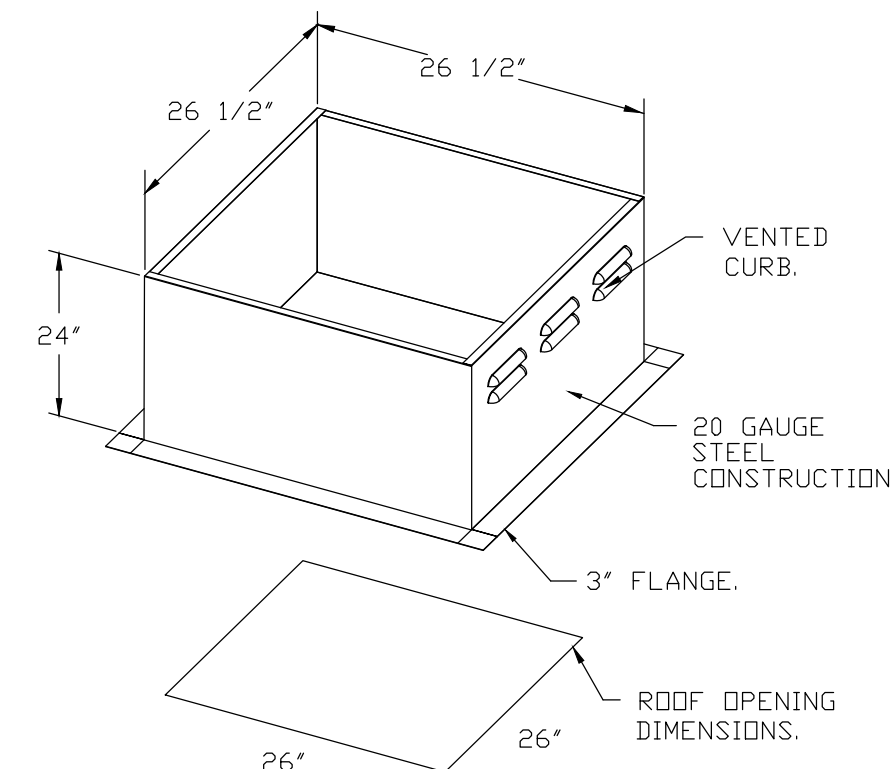
FAN UNIT NO	TAG	INPUT BTUS	OUTPUT BTUS	TEMP RISE	REQUIRED INPUT GAS PRESSURE	GAS TYPE	BURNER EFFICIENCY(%)
5	MUA-1	393648	362156	63°F	7 IN. W.C. - 14 IN. W.C.	NATURAL	92

FAN OPTIONS

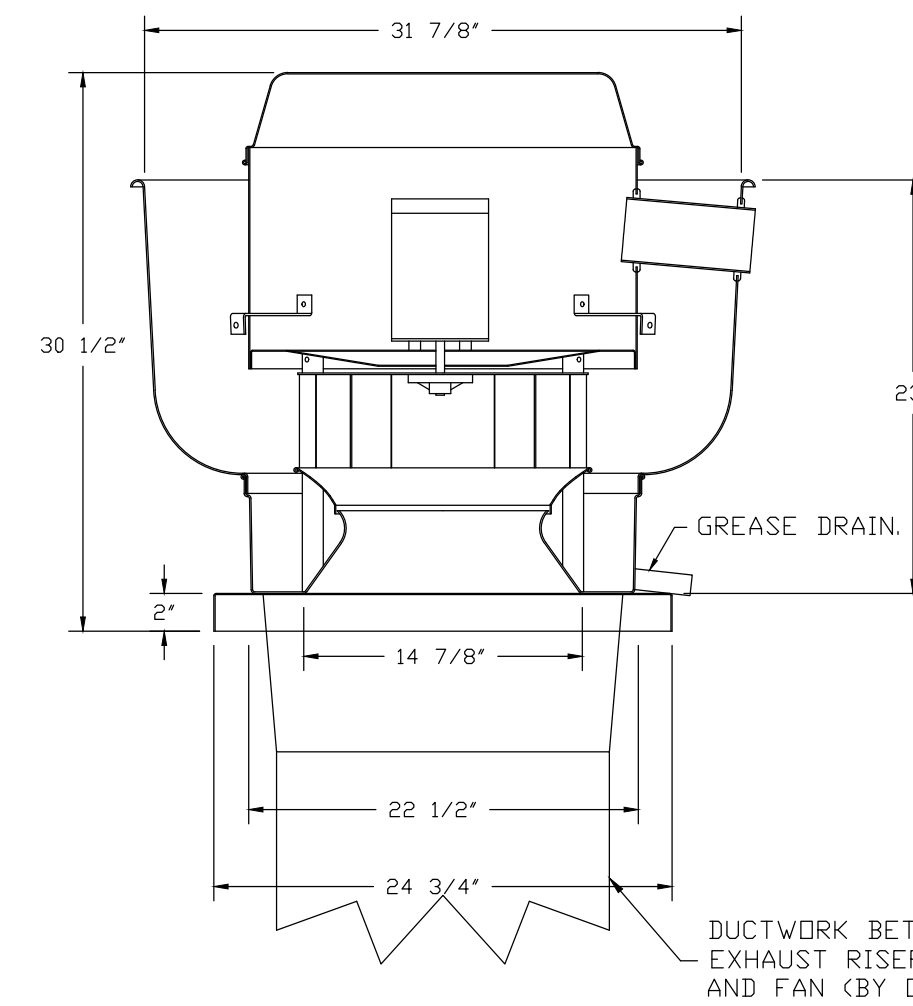
FAN UNIT NO	TAG	QTY	DESCRIPTION
1	1.1	1	GREASE BOX
		1	ECM WIRING PACKAGE - PWM SIGNAL FROM ECPMD3 PREWIRE (TELCO MOTOR), CCW ROTATION
2	1.2	1	2 YEAR PARTS WARRANTY
		1	GREASE BOX
3	2	1	ECM WIRING PACKAGE - PWM SIGNAL FROM ECPMD3 PREWIRE (TELCO MOTOR), CCW ROTATION
		1	2 YEAR PARTS WARRANTY
4	3	1	UTILITY SET GREASE CUP
		1	RE18 - DISCHARGE EXTENSION ASSEMBLY WITH HARDWARE
5	MUA-1	1	2 YEAR PARTS WARRANTY
		1	GREASE BOX
		1	ECM WIRING PACKAGE - PWM SIGNAL FROM ECPMD3 PREWIRE (TELCO MOTOR), CCW ROTATION
		1	2 YEAR PARTS WARRANTY
		1	INLET PRESSURE GAUGE, 0-35"
		1	MANIFOLD PRESSURE GAUGE, -5 TO 15" WC
		1	LDW FIRE START
		1	SHIP LODGE GAS STRAINER 1"
		1	MOTORIZED BACKDRAFT DAMPER FOR A3-D HOUSING - MEETS AMCA CLASS 1A RATING
		1	10 TON 2 CIRCUIT (S/S) MODULAR PACKAGED COOLING OPTION FOR SIZE 3 DF/EH MUA (3,600 TO 6,000 CFM), 208V/230V, 3 PHASE. COOLING THERMOSTAT OR PROGRAMMABLE STAT REQUIRED FOR PROPER OPERATION
1	DOWNTURN PLENUM FOR SIZE 3 DX COIL MODULE		
1	COOLING THERMOSTAT AND RELAY (NOT REQUIRED FOR EVAP)		
1	ECM WIRING PACKAGE-SUPPLY - PWM SIGNAL FROM ECPMD3 PREWIRE (3 - PHASE ZIEHL MOTOR)		
1	2 YEAR PARTS WARRANTY		

CURB ASSEMBLIES

NO	IN FAN	TAG	WEIGHT	ITEM	SIZE
1	# 1	1.1	36 LBS	CURB	23.000"W X 23.000"L X 20.000"H ALONG LENGTH, RIGHT VENTED HINGED.
2	# 2	1.2	36 LBS	CURB	23.000"W X 23.000"L X 20.000"H ALONG LENGTH, RIGHT VENTED HINGED.
3	# 3	2	30 LBS	CURB	26.500"W X 26.500"L X 24.000"H ALONG LENGTH, RIGHT VENTED.
4	# 4	1.2	36 LBS	CURB	23.000"W X 23.000"L X 20.000"H ALONG LENGTH, RIGHT VENTED HINGED.
5	# 5	MUA-1	114 LBS	CURB	35.000"W X 84.000"L X 20.000"H ALONG WIDTH, RIGHT INSULATED.
	# 5			RAIL	6.000"W X 35.000"L X 20.000"H RIGHT.



FANS #1 (1.1), #2 (1.2), #4 (3) - DUBSHFA EXHAUST FAN



FEATURES:

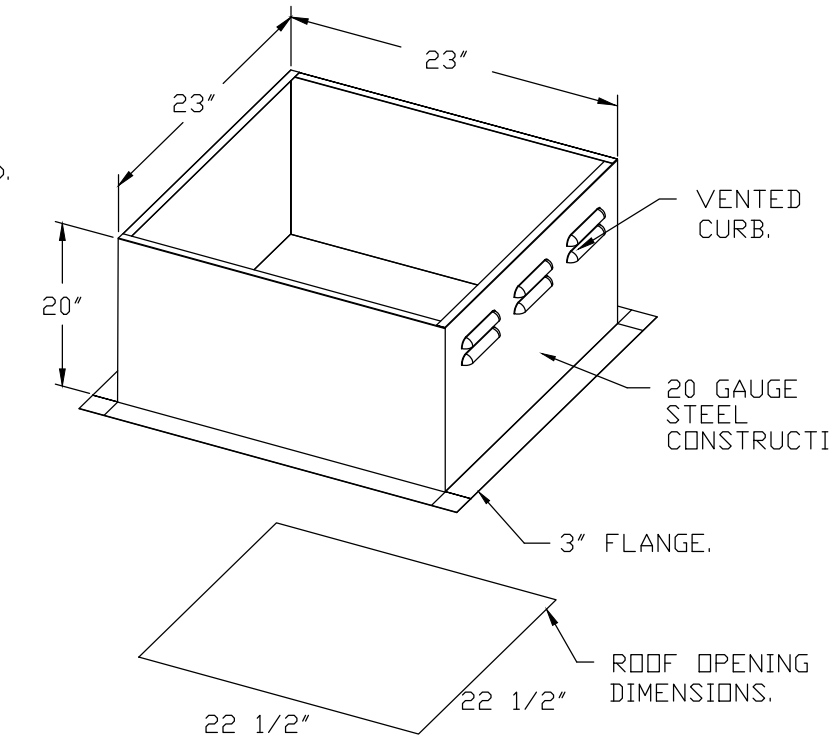
- DIRECT DRIVE CONSTRUCTION (NO BELTS/PULLEYS).
- ROOF MOUNTED FANS.
- RESTAURANT MODEL.
- UL762 AND UL762 AND ULC-S645
- VARIABLE SPEED CONTROL.
- INTERNAL WIRING.
- THERMAL OVERLOAD PROTECTION (SINGLE PHASE).
- HIGH HEAT OPERATION 300°F (149°C).
- GREASE CLASSIFICATION TESTING.
- NEMA 3R SAFETY DISCONNECT SWITCH.

NORMAL TEMPERATURE TEST
EXHAUST FAN MUST OPERATE CONTINUOUSLY WHILE EXHAUSTING AIR AT 300°F (149°C) UNTIL ALL FAN PARTS HAVE REACHED THERMAL EQUILIBRIUM, AND WITHOUT ANY DETERIORATING EFFECTS TO THE FAN WHICH WOULD CAUSE UNSAFE OPERATION.

ABNORMAL FLARE-UP TEST
EXHAUST FAN MUST OPERATE CONTINUOUSLY WHILE EXHAUSTING BURNING GREASE VAPORS AT 600°F (316°C) FOR A PERIOD OF 15 MINUTES WITHOUT THE FAN BECOMING DAMAGED TO ANY EXTENT THAT COULD CAUSE AN UNSAFE CONDITION.

OPTIONS

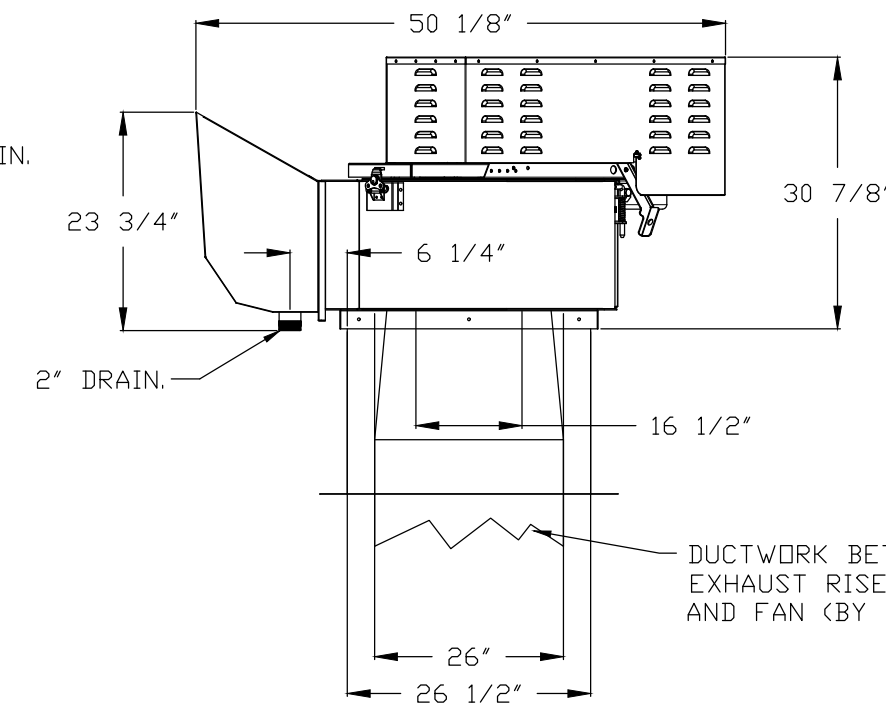
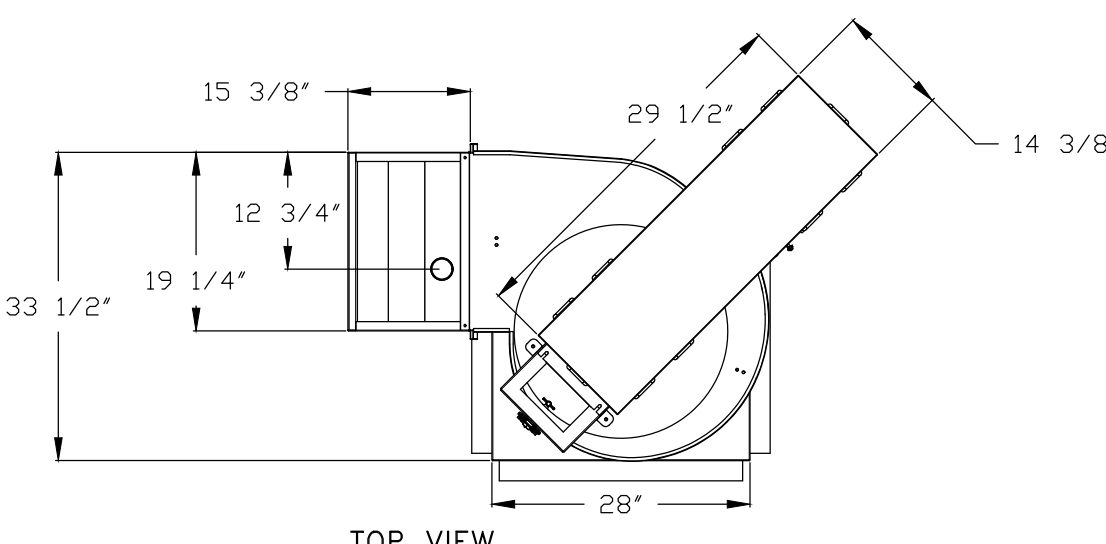
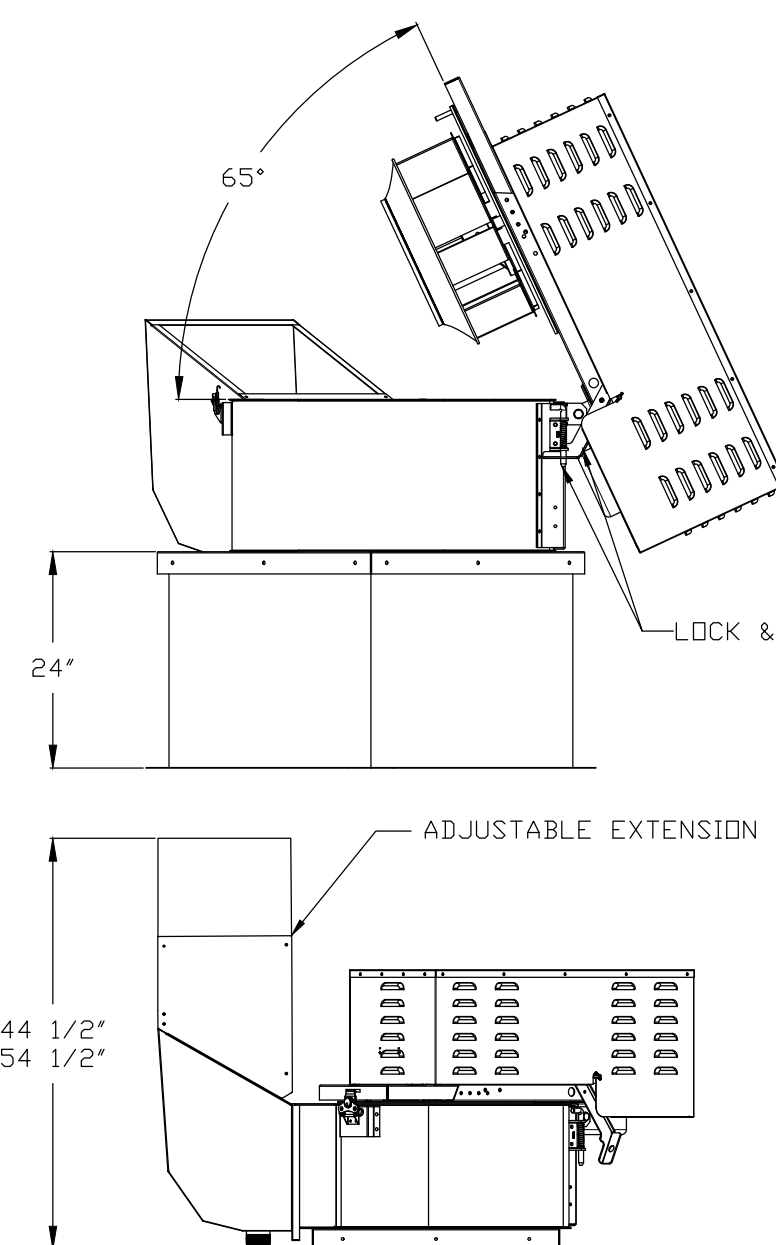
GREASE BOX:
ECM WIRING PACKAGE - PWM SIGNAL FROM ECPMD3 PREWIRE (TELCO MOTOR), CCW ROTATION.
2 YEAR PARTS WARRANTY.



PITCHED CURBS ARE AVAILABLE FOR PITCHED ROOFS.

SPECIFY PITCH:
EXAMPLE: 7/12 PITCH = 30° SLOPE.

FAN #3 CASRE18DD - EXHAUST FAN (2)



FEATURES:

- ROOF MOUNTED FANS.
- RESTAURANT MODEL.
- UL762 AND ULC-S645.
- HIGH HEAT OPERATION DIRECT DRIVE 300°F (149°C).
- HEAT SLINGER.
- GREASE CLASSIFICATION TESTING.
- TILT OUT WHEEL.
- LOCKING PIN FOR POWER PACK.
- MOTOR WEATHER COVER.
- INTERLOCKED DISCONNECT SWITCH.
- NEMA 4X SAFETY DISCONNECT SWITCH.

NORMAL TEMPERATURE TEST DIRECT DRIVE
EXHAUST FAN MUST OPERATE CONTINUOUSLY WHILE EXHAUSTING AIR AT 300°F (149°C) UNTIL ALL FAN PARTS HAVE REACHED THERMAL EQUILIBRIUM, AND WITHOUT ANY DETERIORATING EFFECTS TO THE FAN WHICH WOULD CAUSE UNSAFE OPERATION.

ABNORMAL FLARE-UP TEST BELT & DIRECT DRIVE
EXHAUST FAN MUST OPERATE CONTINUOUSLY WHILE EXHAUSTING BURNING GREASE VAPORS AT 600°F (316°C) FOR A PERIOD OF 15 MINUTES WITHOUT THE FAN BECOMING DAMAGED TO ANY EXTENT THAT COULD CAUSE AN UNSAFE CONDITION.

OPTIONS

UTILITY SET GREASE CUP.
RE18 - DISCHARGE EXTENSION ASSEMBLY WITH HARDWARE.
2 YEAR PARTS WARRANTY.

REVISIONS

DESCRIPTION	DATE

MPW ENGINEERING, LLC
110 W. 7TH STREET • SUITE 600 • TULSA, OK 74109
(918) 582-4088 • (918) 582-4087 FAX

CAPTIVEAIRE
www.captiveaire.com
Dallas Office
1901 Royal Lane Suite 101, DALLAS, TX, 75229 PHONE: (214) 220-3999 FAX: (214) 220-0099 EMAIL: reg45@captiveaire.com

Torchys Taco 9 7 15 Liberty Township OH
7650 Liberty Way,
LIBERTY TOWNSHIP, OH, 45069

DATE: 9/15/2022
DWG.#: 5645591
DRAWN BY: DJL-45
SCALE: 3/4" = 1'-0"
MASTER DRAWING

SHEET NO.
4

MPW
MPW ENGINEERING, LLC
110 W. 7TH STREET • SUITE 600 • TULSA, OK 74109
(918) 582-4088 • (918) 582-4087 FAX

SEAL:

TORCHYS TACOS
Liberty Way West
7673 Blake Street, Suite 100
Liberty Township, OH 45069

JOSEPH CANNON
REGISTERED PROFESSIONAL ENGINEER
STATE OF OHIO
PE-77503
9/19/22

TORCHYS TACOS
Liberty Way West
7673 Blake Street, Suite 100
Liberty Township, OH 45069

ISSUE LOG:

No.	Date	Description

HOOD DETAILS

PROJECT NUMBER: 2022-2
ISSUE DATE: Sept. 2, 2022

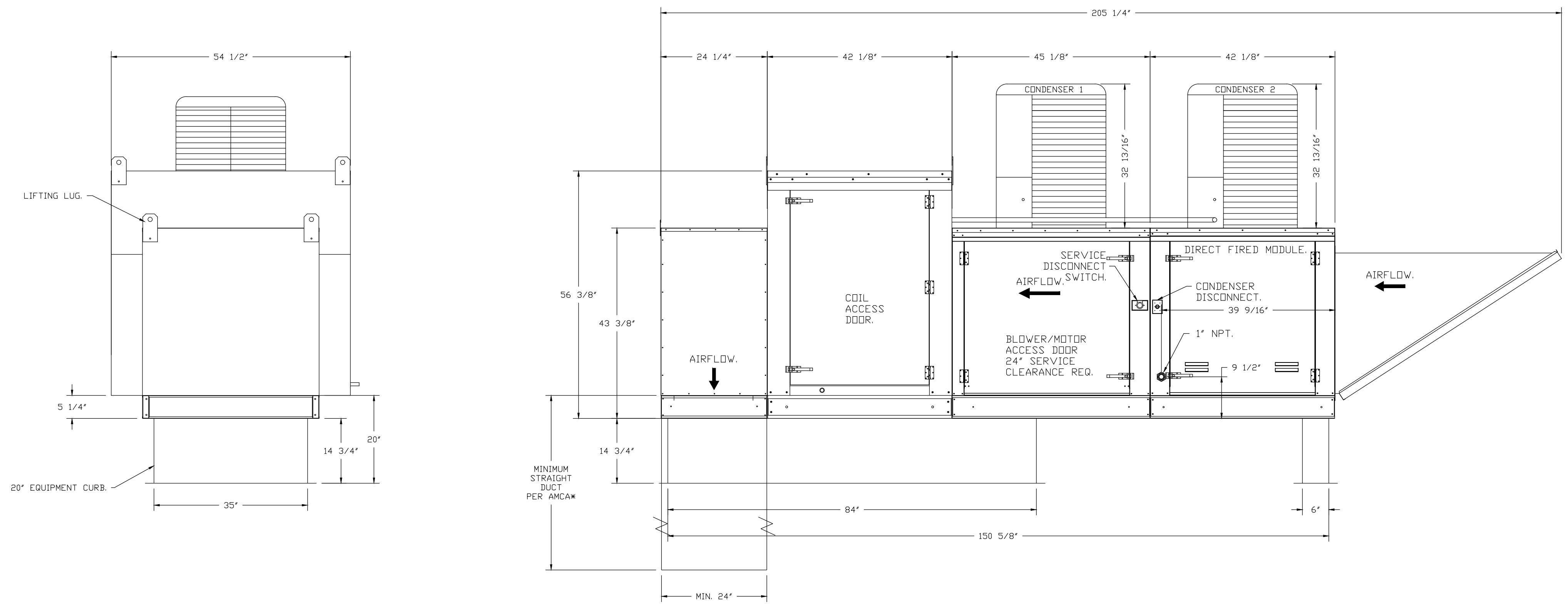
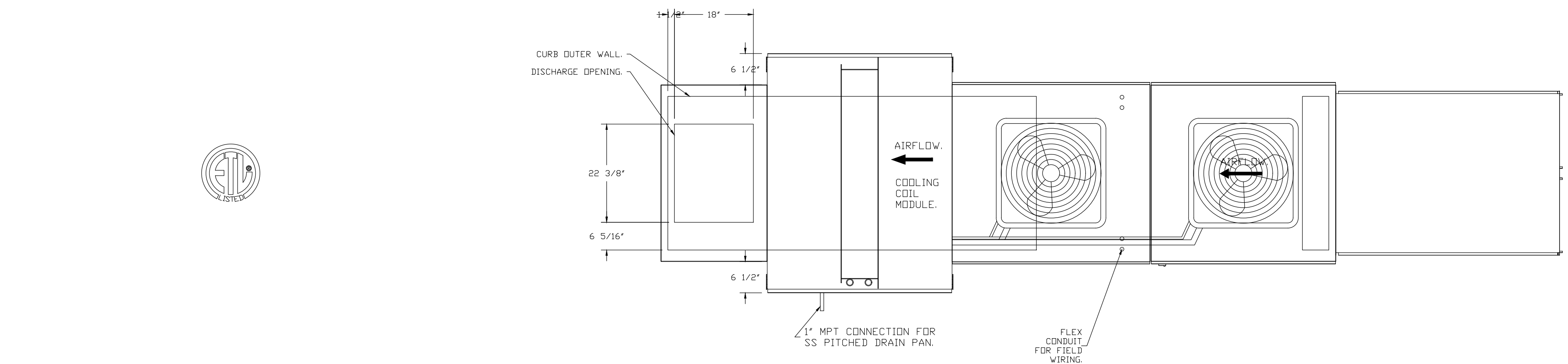
M3.4

- FAN #5 A3-D500-252-MPU - HEATER (MUA-1)
1. DIRECT GAS FIRED HEATED MAKE UP AIR UNIT WITH 25" DIRECT DRIVE FAN AND 12" BURNER.
 2. INTAKE HOOD WITH EZ FILTERS.
 3. DOWN DISCHARGE - AIR FLOW RIGHT -> LEFT.
 4. GAS PRESSURE GAUGE, 0-35", 2.5" DIAMETER, 1/4" THREAD SIZE.
 5. GAS PRESSURE GAUGE, -5 TO +15 INCHES WC, 2.5" DIAMETER, 1/4" THREAD SIZE.
 6. LOW FIRE START - ALLOWS THE BURNER CIRCUIT TO ENERGIZE WHEN THE MODULATION CONTROL IS IN A LOW FIRE POSITION.
 7. SHIP LOOSE GAS STRAINER TO BE INSTALLED UPSTREAM OF UNIT CONNECTION 1" CONNECTION.
 8. MODORIZED BACK DRAFT DAMPER 30" X 30" FOR SIZE 3 STANDARD & MODULAR HEATER UNITS W/EXTENDED SHAFT, STANDARD GALVANIZED CONSTRUCTION, 3/4" REAR FLANGE, LOW LEAKAGE, INFLUP-S ACTUATOR INCLUDED.
 9. 10 TON, DUAL CIRCUIT (S/S) MODULAR PACKAGED COOLING OPTION FOR SIZE 3 DF/EM MODULAR PACKAGED UNIT, INCLUDES CONDENSER, DX COIL, FILTER/DRYER KIT, THERMAL EXPANSION VALVE, R410A REFRIGERANT, AND REFRIGERANT PIPING. (3,600 TO 6,000 CFM) WHEN ORDERED WITH OPPOSITE AIRFLOW CONDENSERS ACCESS AND COIL PIPING WILL REMAIN IN STANDARD POSITION. DRAIN AND SLEDS WILL MOVE TO THE OPPOSITE SIDE. ANY OTHER CHANGE WILL REQUIRE CUI. CONDENSERS REQUIRE SEPARATE 208V, 3 PHASE POWER SUPPLY UNLESS ORDERED WITH SINGLE POINT CONNECTION. COIL = 3E20602M.
 10. DOWNTURN PLENUM FOR SIZE 3 COOLING COIL MODULE - REQUIRED FOR DOWN DISCHARGE COOLING COIL APPLICATIONS.
 11. DX COOLING INTAKE AIR THERMOSTAT AND RELAYS MOUNTED IN UNIT - SET POINT FOR THERMOSTAT SHOULD BE 65°F.
 12. ECM WIRING PACKAGE FOR ZIEHL SUPPLY MOTORS WITH PWM SIGNAL FROM ECPM03 PREWIRE.
 13. HINGED DOUBLE WALL INSULATED DOOR ASSEMBLY (BURNER/BLOWER/MPU SECTION).
 14. 2 YEAR PARTS WARRANTY.

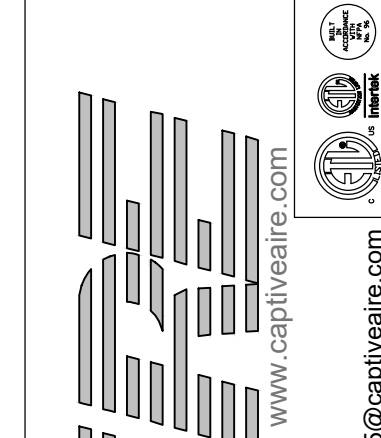
*NOTE: SUPPLY DUCT MUST BE INSTALLED TO MEET SMACNA STANDARDS. A MINIMUM STRAIGHT DUCT LENGTH MUST BE MAINTAINED DOWNSTREAM OF UNIT DISCHARGE AS OUTLINED IN AMCA PUBLICATION 201. WHEN USING RECTANGULAR DUCTWORK, ELBOWS MUST BE RADIUS THROAT, RADIUS BACK WITH TURNING VANES. FLEXIBLE DUCTWORK AND SQUARE THROAT/SQUARE BACK ELBOWS SHOULD NOT BE USED. ANY TRANSITION AND/OR TURNS IN THE DUCTWORK WILL CAUSE SYSTEM EFFECT. SYSTEM EFFECT WILL DRASTICALLY INCREASE STATIC PRESSURE AND REDUCE AIRFLOW. DO NOT RELY ON UNIT TO SUPPORT DUCT IN ANY WAY. FAILURE TO PROPERLY SIZE DUCTWORK MAY CAUSE SYSTEM EFFECTS AND REDUCE PERFORMANCE OF THE EQUIPMENT. SUGGESTED STRAIGHT DUCT SIZE IS 24" X 24".

SUPPLY SIDE HEATER INFORMATION:

WINTER TEMPERATURE = 12°F. TEMP. RISE = 63°F.
 BTUS CALCULATED OFF ACTUAL AIR DENSITY.
 OUTPUT BTUS AT ALTITUDE OF 0.0 FT. = 372266.
 INPUT BTUS AT ALTITUDE OF 0.0 FT. = 404637.
 OUTPUT BTUS AT ALTITUDE OF 760 FT. = 362156.
 INPUT BTUS AT ALTITUDE OF 760 FT. = 393647.



REVISIONS	
DESCRIPTION	DATE



CAPTIVE
 Dallas Office
 1901 Royal Lane Suite 101, DALLAS, TX, 75229 PHONE: (214) 220-3999 FAX: (214) 220-0999 EMAIL: rgn@captiveware.com

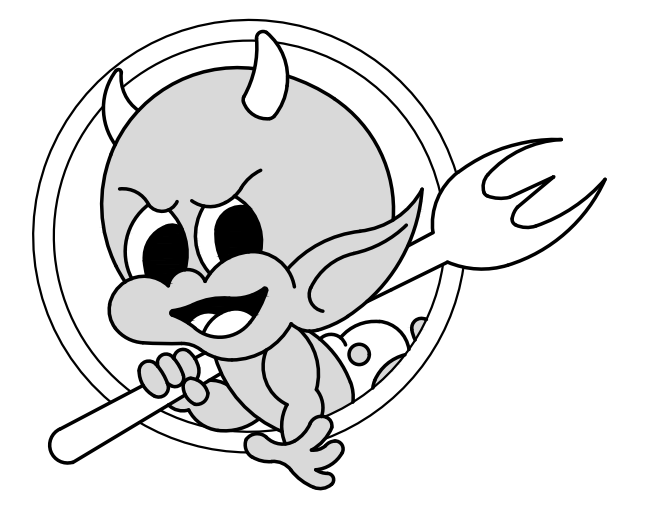


MPW ENGINEERING, LLC
 110 W. 7TH STREET • SUITE 600 • TULSA, OK 74119
 (918) 582-4008 • (918) 582-0077 FAX

SEAL:



Liberty Way West
 7673 Blake Street, Suite 100
 Liberty Township, OH 45069



ISSUE LOG:

No.	Date	Description

Torchy's Taco 9 7 15 Liberty Township OH
 7650 Liberty Way,
 LIBERTY TOWNSHIP, OH, 45069

DATE: 9/15/2022

DWG.#: 5645591

DRAWN BY: DJL-45

SCALE: 3/4" = 1'-0"

MASTER DRAWING

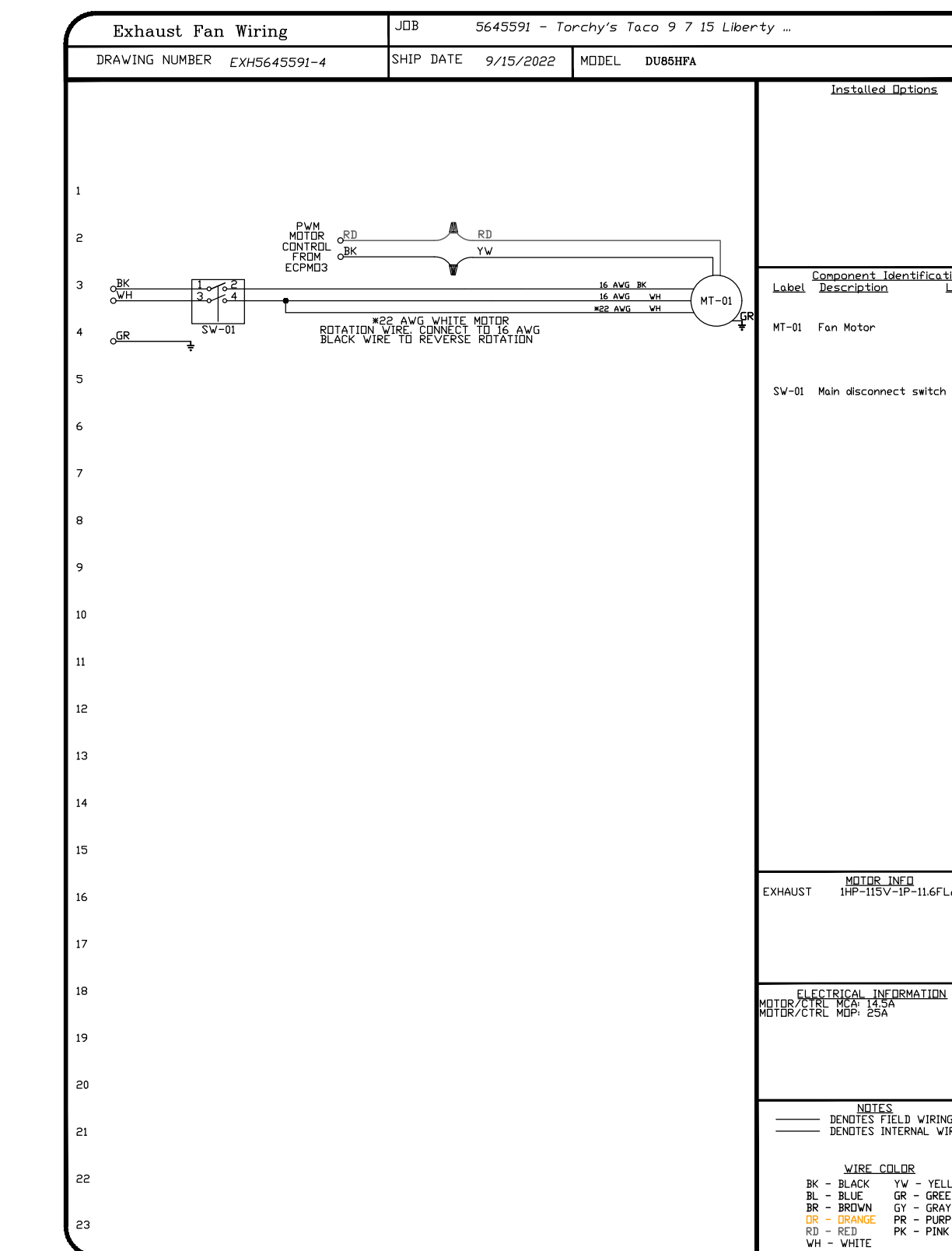
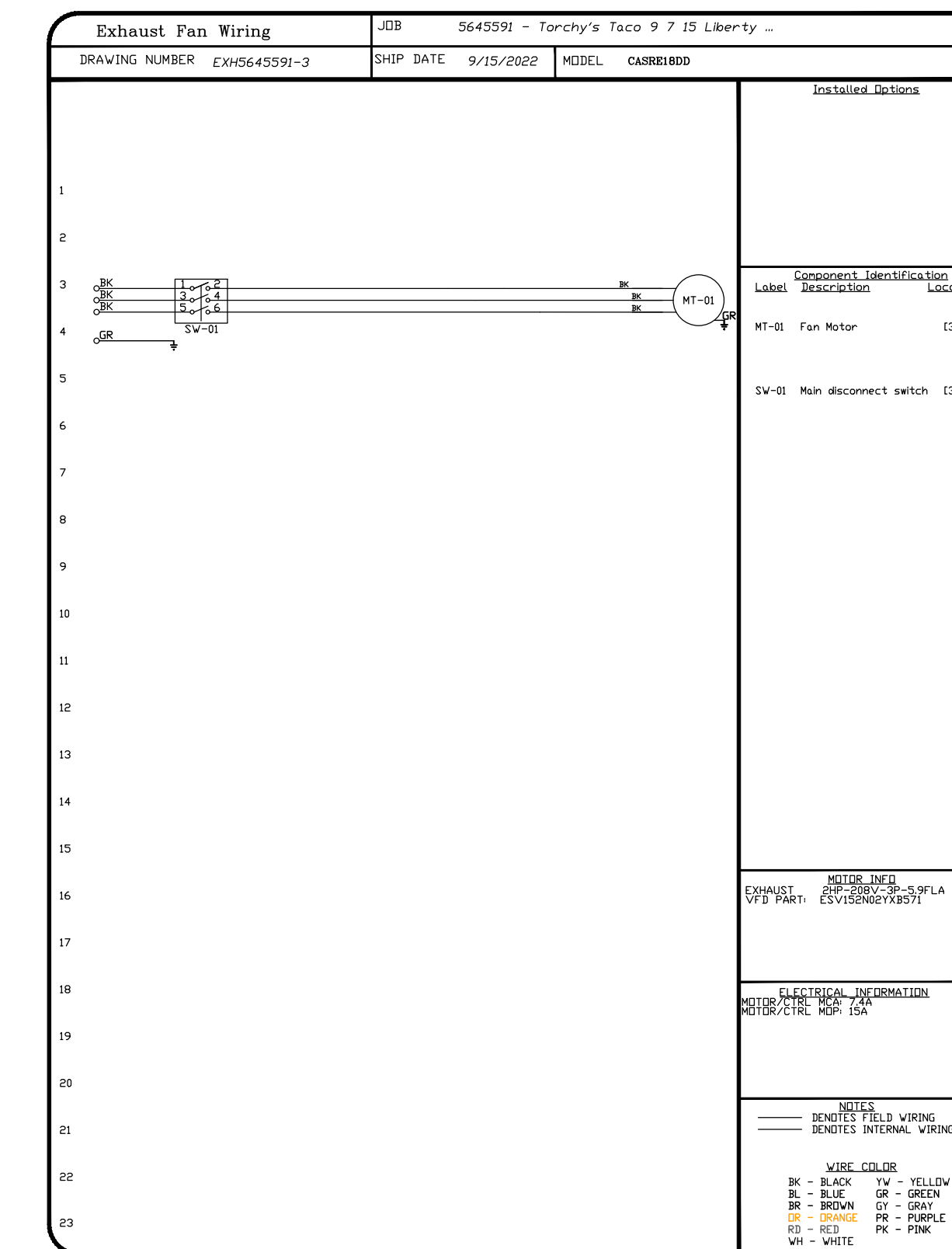
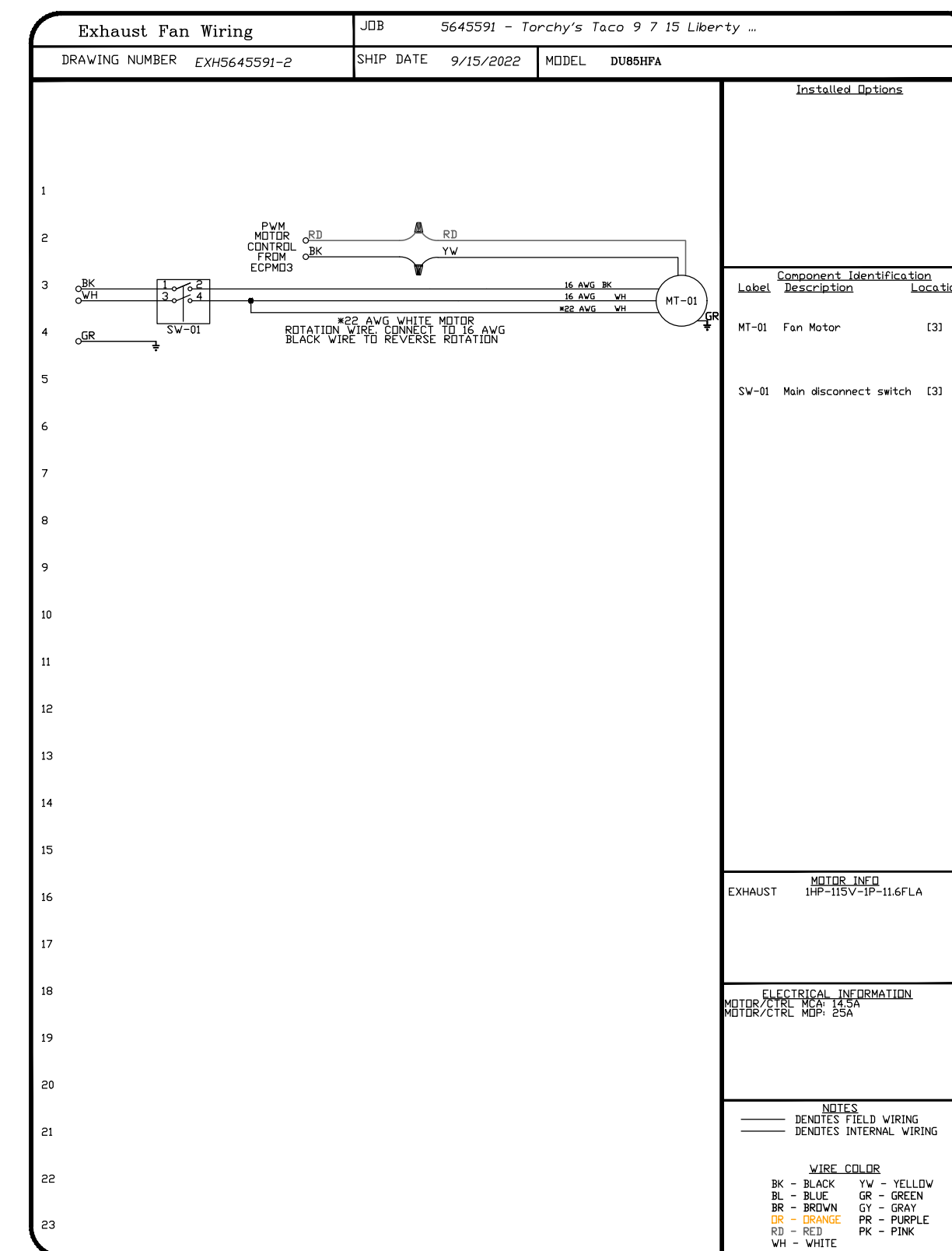
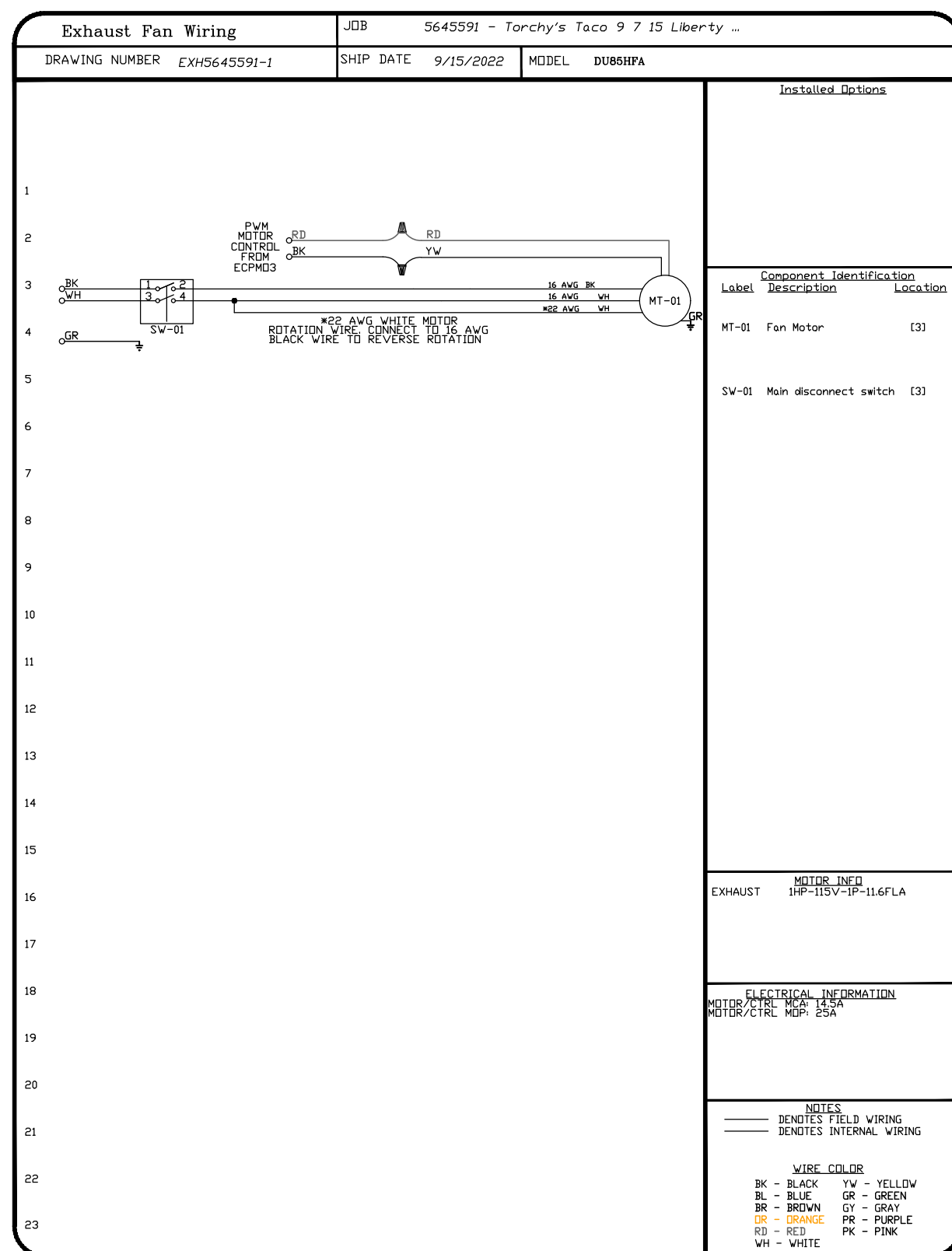
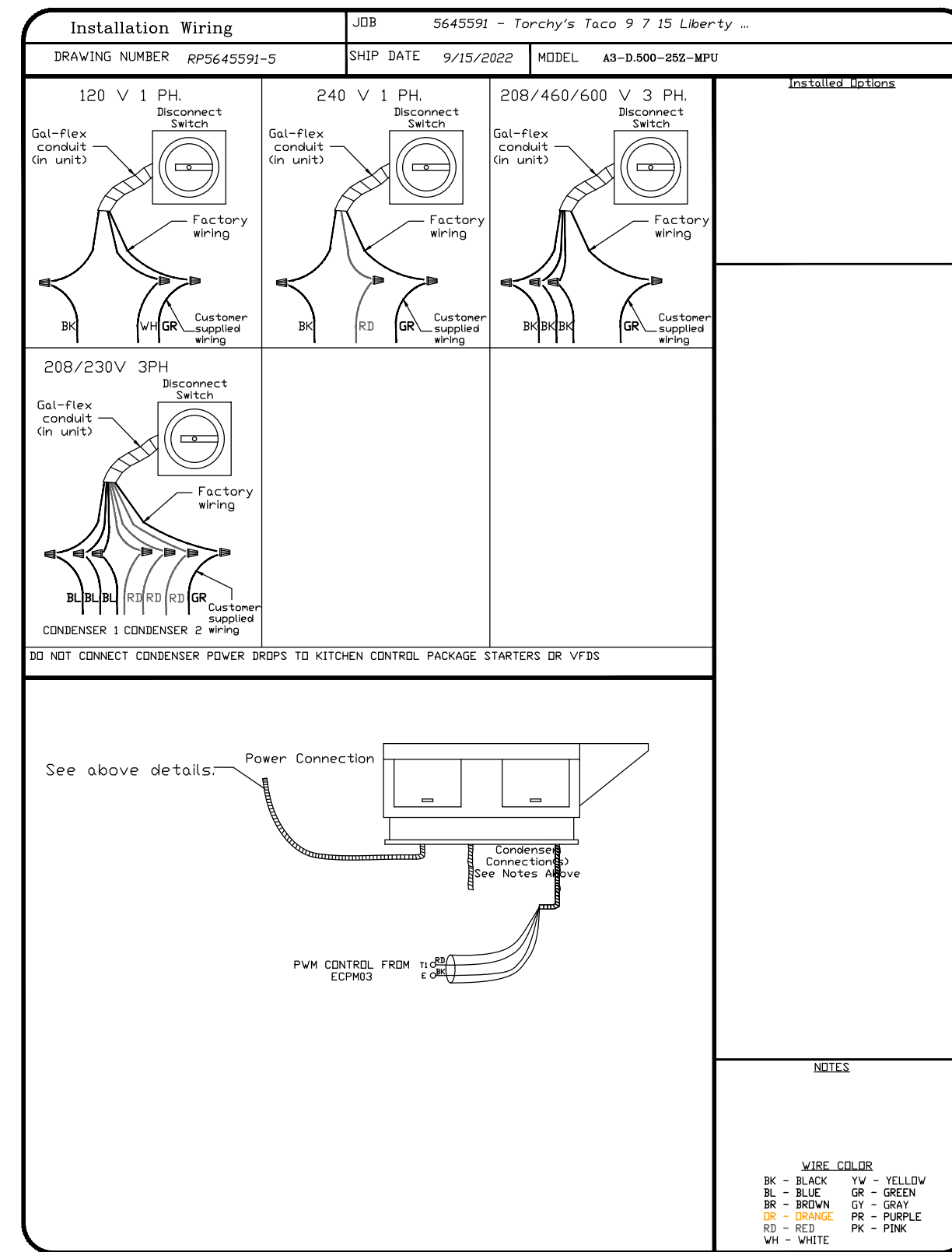
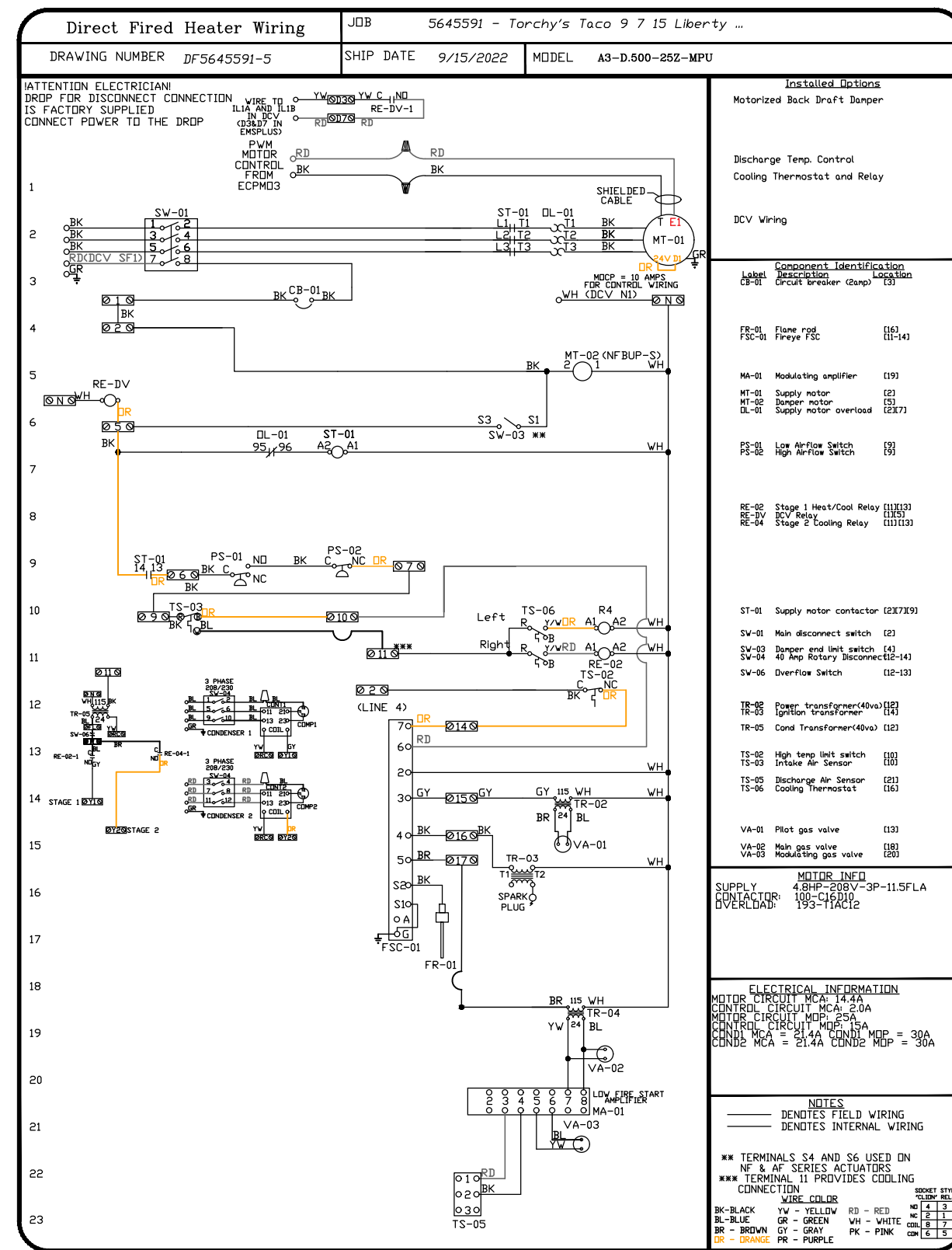
SHEET NO. 5

HOOD DETAILS

PROJECT NUMBER: 2022-2

ISSUE DATE: Sept. 2, 2022

M3.5



REVISIONS

DESCRIPTION	DATE

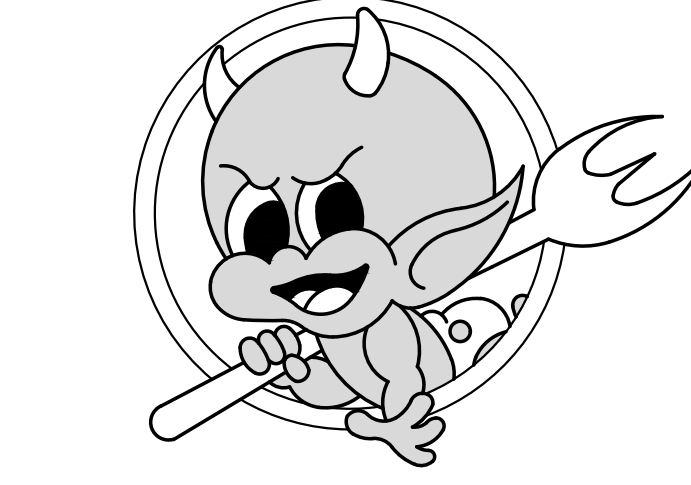
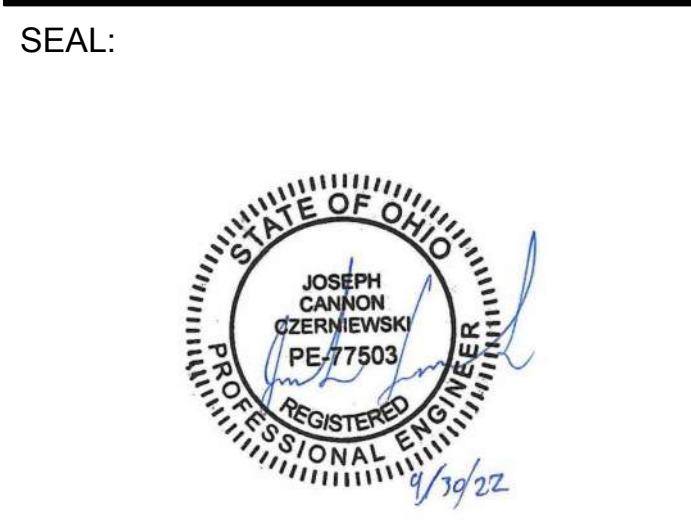
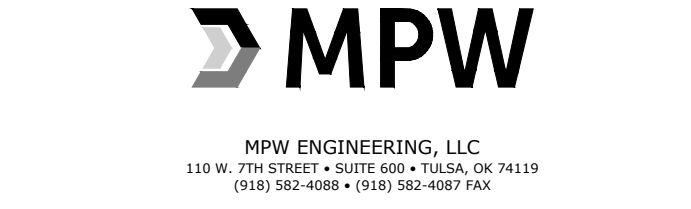
CAPTIVE

Dallas Office
 1901 Royal Lane Suite 101, DALLAS, TX, 75229 PHONE: (214) 220-9898 FAX: (214) 220-0099 EMAIL: reg45@captivate.com

Torchy's Taco 9 7 15 Liberty Township OH
 7650 Liberty Way,
 LIBERTY TOWNSHIP, OH, 45069

DATE: 9/15/2022
 DWG.#: 5645591
 DRAWN BY: DJL-45
 SCALE: 3/4" = 1'-0"
 MASTER DRAWING

SHEET NO.
 6



ISSUE LOG:

No.	Date	Description

HOOD DETAILS

PROJECT NUMBER:	2022-2
ISSUE DATE:	Sept. 2, 2022

M3.6

