



MARK	MANUFACTURER & MODEL NUMBER	NOMINAL TONNAGE	SUPPLY AIR CFM (CFM)	ESP (IN)	HIGH MIN. OUTSIDE AIR	HEATING CAPACITY				COOLING CAPACITY				ELECTRICAL DATA		WEIGHT (LBS)	NOTES
						1ST STAGE	2ND STAGE	3RD STAGE	4TH STAGE	1ST STAGE	2ND STAGE	3RD STAGE	4TH STAGE	WATTAGE	PHASE		
EERTU-1	LENNOX LG4204H4HSG	12.5	4600	-	1225	-	-	-	-	-	-	-	-	-	-	-	1
EERTU-2	LENNOX LG4204H4HSG	12.5	4300	-	1075	-	-	-	-	-	-	-	-	-	-	-	1
EERTU-3	LENNOX LG4204H4HSG	10	4000	-	1000	-	-	-	-	-	-	-	-	-	-	-	1
EERTU-4	LENNOX LG4204H4HSG	10	4000	-	1000	-	-	-	-	-	-	-	-	-	-	-	1
EERTU-5	LENNOX LG4204H4HSG	10	3800	-	850	-	-	-	-	-	-	-	-	-	-	-	1
EERTU-6	LENNOX LG4204H4HSG	10	4200	-	1050	-	-	-	-	-	-	-	-	-	-	-	1
EERTU-7	LENNOX LG4204H4HSG	10	4000	-	1000	-	-	-	-	-	-	-	-	-	-	-	1
EERTU-8	LENNOX LG4204H4HSG	10	4000	-	1000	-	-	-	-	-	-	-	-	-	-	-	1
EERTU-9	LENNOX LG4204H4HSG	10	4000	-	1000	-	-	-	-	-	-	-	-	-	-	-	1
EERTU-10	LENNOX LG4204H4HSG	10	4000	-	1000	-	-	-	-	-	-	-	-	-	-	-	1
EERTU-11	LENNOX LG4204H4HSG	5	2000	-	500	-	-	-	-	-	-	-	-	-	-	-	1

DIFFUSERS AND GRILLES						
MARK	MANUFACTURER	MODEL	MATERIAL	FRAME	MAX NC	NOTES
SG-1	TITUS	300R	STEEL	DUCT MOUNTED	25	14
TG-1	TITUS	SF	STEEL	SEE PLAN	30	5-6

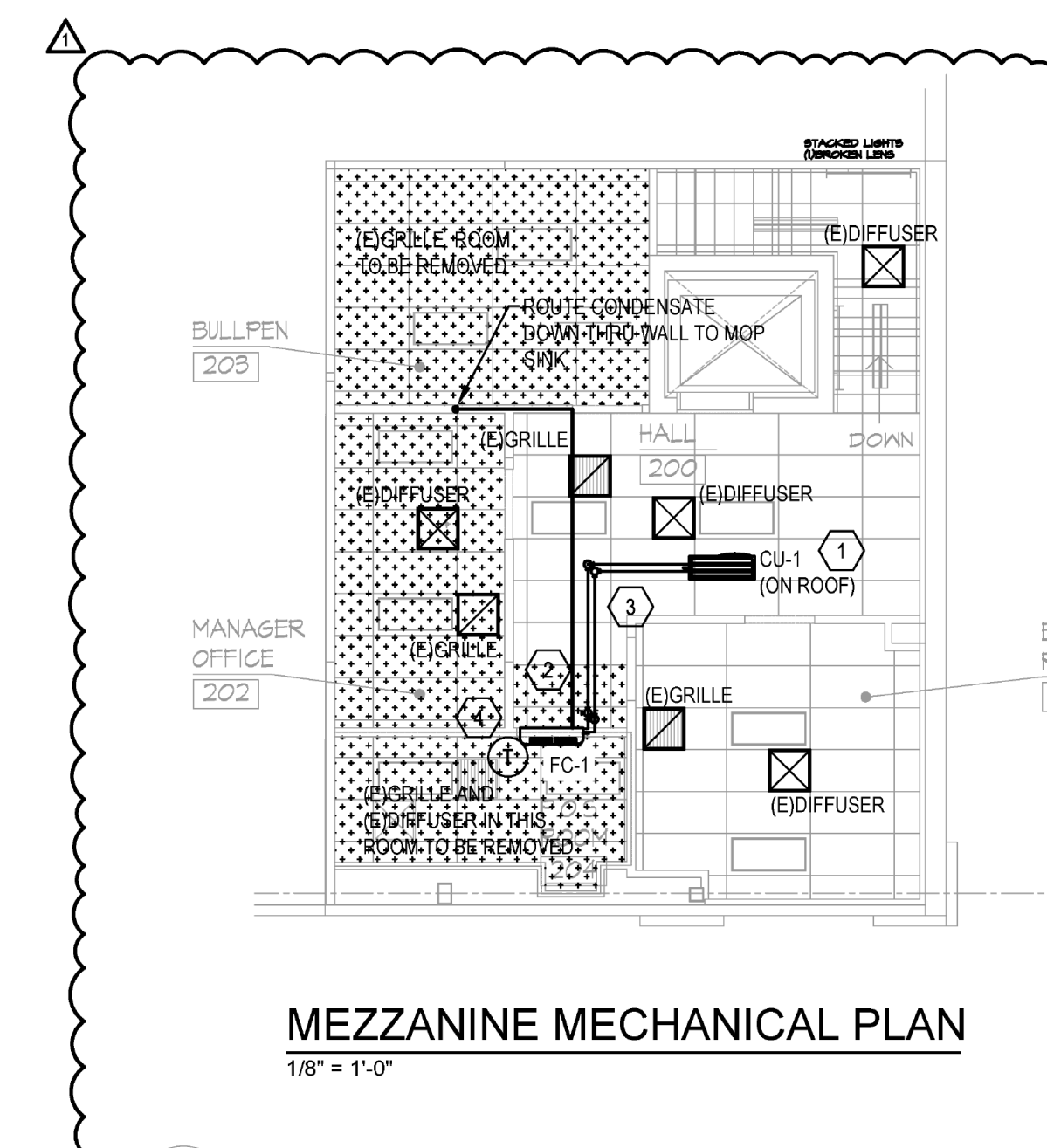
NOTES:  
1. OPPOSED BLADE DAMPER  
2. NECK SIZE INDICATED ON DRAWING  
3. PAINT INTERIOR OF DUCTWORK BEHIND GRILLES AND DIFFUSERS BLACK IF VISIBLE THROUGH DEVICE.  
4. SIDEWALL MOUNTED OR DUCT MOUNTED AT 30 DEGREES DOWN AS LOCATED ON DRAWING. SEE DETAIL THIS SHEET.  
5. PROVIDE WITH HANG MOUNT FRAME FOR GRILLE INSTALLED IN WALL.  
6. MOUNT GRILLE HIGH ON WALL WITH BLADES FACING UP.

SPLIT DX FAN COIL AND CONDENSING UNIT SCHEDULE																			
MARK	FAN COIL MANUFACTURER & MODEL NUMBER	CONDENSING UNIT MANUFACTURER & MODEL NUMBER	AREA SERVED	NOMINAL TONNAGE	ENERGY EFFICIENCY (SEER)	AIR FLOW (CFM)	GROSS COOLING CAPACITY			FAN COIL UNIT		CONDENSING UNIT			ACCESSORIES	NOTES			
							AMBIENT (TYEP)	COOLING (DBRH)	EAT (TYEP/DBRH)	VOLTAGE	MCA	MOCP	WEIGHT	VOLTAGE			MCA	MOCP	WEIGHT
FC-100-1	MITSUBISHI PAAJ2KHAT	MITSUBISHI POUJ2KHAT	TELEDATA ROOM	2	21.4	710	95	24,000	8067	309V 1PH	1	15	80	206V 1PH	19	25	155	1.3	1.2

ACCESSORIES PROVIDED THROUGH MANUFACTURER:  
1. PROVIDE WITH CONDENSATE PUMP KIT.  
2. PROVIDE WITH 600 BULBULE FOR OPERATION DOWN TO 0°F.  
3. PROVIDE LOW VOLTAGE TRANSFORMER 240V, 12000W/600V PRI TO 24 VAC SEC.

NOTES:  
1. INSTALL ACCESSORIES FURNISHED WITH UNIT.  
2. PROVIDE NON-PROGRAMMABLE 2-STAGE THERMOSTAT.

VENTILATION SCHEDULE based on ASHRAE 62.1 - 2021												
Zone Identification	Occupancy Category	Zone Floor Area A <sub>f</sub> (ft <sup>2</sup> )	Area Outdoor Airflow Rate R <sub>a</sub> (CFM/ft <sup>2</sup> )	Occupant Density (#/1000ft <sup>2</sup> )	Zone Population P <sub>z</sub> (People)	People Outdoor Airflow Rate R <sub>p</sub> (CFM/person)	Zone Air Effectiveness E <sub>z</sub>	Zone Outdoor Airflow Rate V <sub>z</sub> (CFM)	Actual Provided Outdoor Airflow (CFM)	Required Exhaust Airflow (CFM)	Actual Provided Supply Airflow	
SALES	Sales	27250	0.12	15	409	5	0.80	7922	5288	0	0	37150
STOCK 122	Occupiable Storage Rooms for Dry Materials	812	0.06	2	5	5	0.80	92	200	0	0	800
HALL 105	Corridors	105	0.06	0	0	0	0.80	8	25	0	0	100
HALL 108	Corridors	100	0.06	0	0	0	0.80	8	25	0	0	100
HALL 109	Corridors	57	0.06	0	0	0	0.80	4	13	0	0	50
STOCK 106	Occupiable Storage Rooms for Dry Materials	1578	0.06	2	5	5	0.80	135	325	0	0	1300
BOPS	Occupiable Storage Rooms for Dry Materials	402	0.06	2	5	5	0.80	81	190	0	0	800
OFFICE	Office Space	93	0.06	5	1	5	0.80	13	25	0	0	100
RECEIVING	Shipping/Receiving	1188	0.12	2	5	10	0.80	249	310	0	0	1000
Totals:		31383						8483	10300	0	0	41200

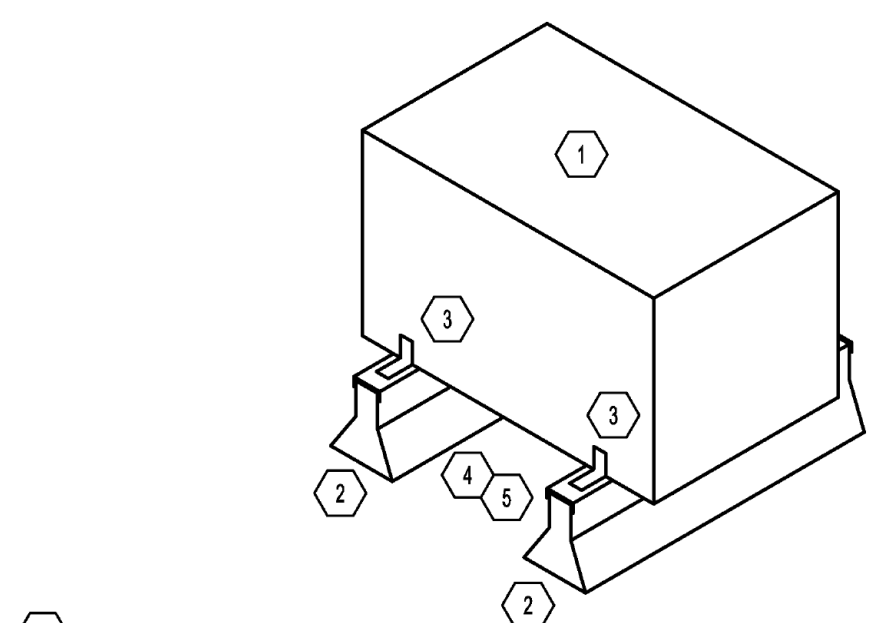


**MECHANICAL GENERAL NOTES:**

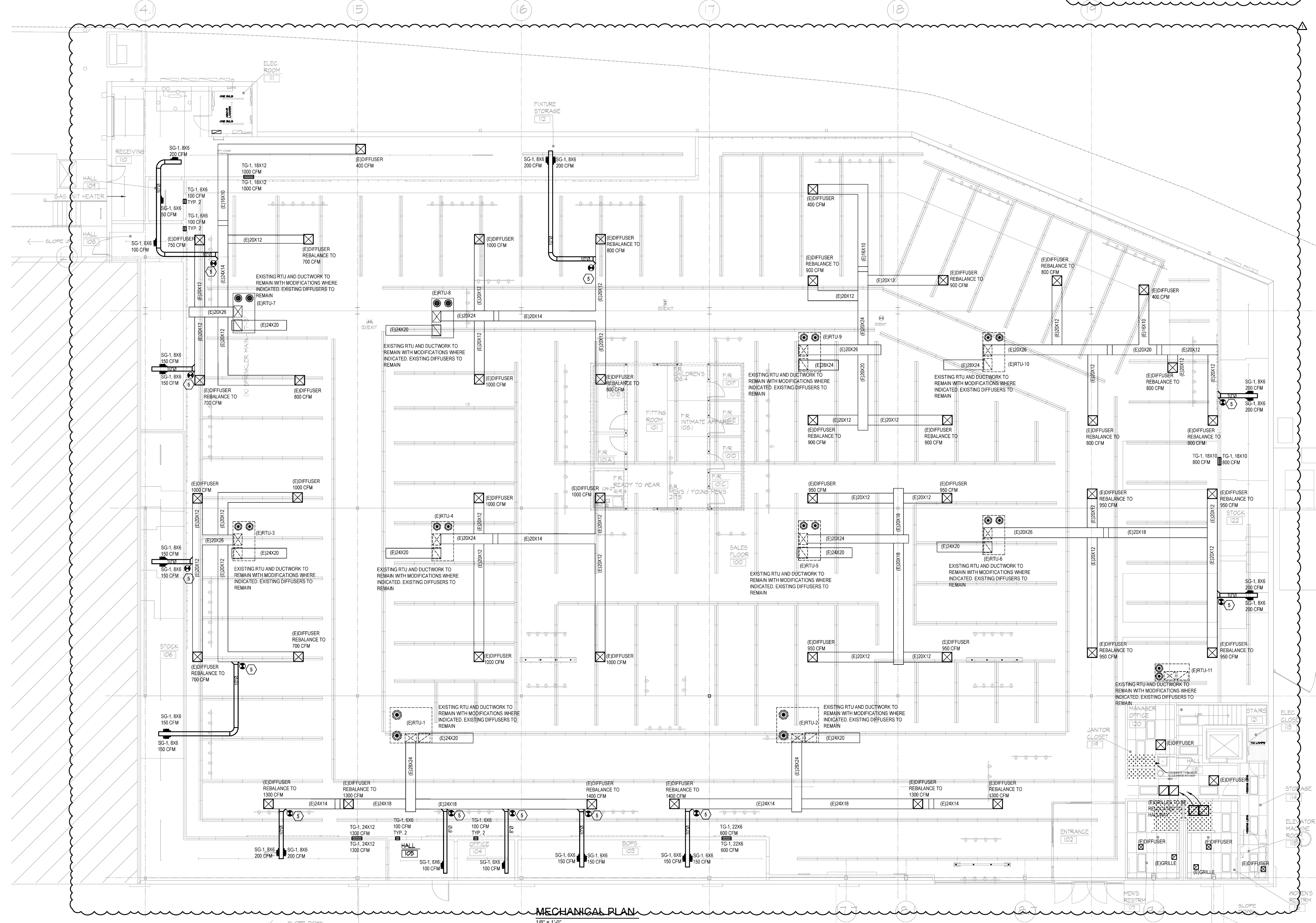
- A. CONTRACTOR SHALL PROVIDE ALL LABOR, MATERIALS, TOOLS AND EQUIPMENT TO INSTALL A COMPLETE AND OPERATIONAL HEATING AND COOLING SYSTEM.
- B. CONTRACTOR SHALL PROVIDE ALL REQUIRED HVAC PERMITS.
- C. THE CONTRACTOR SHALL COMPLY WITH NFPA-90A AND ALL APPLICABLE CODES.
- D. ALL HVAC WORK TO BE PERFORMED SHALL BE IN COMPLIANCE WITH ALL STATE AND LOCAL CODES.
- E. THE ELECTRICAL CONTRACTOR SHALL PROVIDE ALL SWITCHES, DISCONNECTS, AND CONTROL WIRING.
- F. THE CONTRACTOR SHALL PROVIDE A WRITTEN GUARANTEE THAT SHALL WARRANT ALL WORKMANSHIP AND MATERIALS FOR ONE (1) YEAR FROM THE FINAL WORK ACCEPTANCE BY THE OWNER AND A FIVE YEAR WARRANTY ON THE COMPRESSOR.
- G. ALL WORK OF THIS TRADE SHALL BE COORDINATED WITH ALL OTHER TRADES TO AVOID ANY INTERFERENCES THAT MAY DELAY PROGRESS DURING CONSTRUCTION.
- H. THE MECHANICAL CONTRACTOR SHALL TEST AND BALANCE TO THE AIR QUANTITIES ON THE PLAN AND PROVIDE A TAB REPORT.
- I. CONTRACTOR SHALL INSTALL A THERMOSTAT IN ACCORDANCE WITH THERMOSTAT SPEC'S.
- J. CONTRACTOR SHALL PROVIDE EQUIPMENT OF THE SCHEDULED CAPACITIES DESIGNED.

**MECHANICAL CODED NOTES:**

- 1. PROVIDE CONDENSING UNIT CU-1 AND EQUIPMENT SUPPORT RAILS FOR MOUNTING ON ROOF. SUPPORT RAILS SHALL SPAN A MINIMUM OF TWO BAR JOISTS. COORDINATE TYPE OF SUPPORT RAIL REQUIRED WITH ROOFING CONTRACTOR.
- 2. PROVIDE WALL MOUNTED DUCTLESS SPLIT SYSTEM AIR CONDITIONING UNIT FC-1. INSTALL UNIT LEVEL FOR PROPER CONDENSATE DRAINAGE. INSTALL BOTTOM OF UNIT 6" ABOVE TOP OF DOOR.
- 3. PROPOSE REFRIGERANT PIPING ROUTE. FINAL ROUTE APPROVED BY OWNER AND MANUFACTURER PRIOR TO WORK. PROVIDE PIPE CURBS PENETRATIONS AND SUPPORTS. TRAP AND SLOPE LINES PER MANUFACTURER'S RECOMMENDATIONS.
- 4. PROVIDE ACCESSORY HALL MOUNTED CONTROLLER AT 5'-0" ABOVE FINISHED FLOOR. SET TO MAINTAIN 72°F.
- 5. CONNECT NEW DUCT BRANCH TO EXISTING MAIN. PROVIDE ALL CONNECTIONS AND TRANSITIONS NEEDED.



- 1 CONDENSING UNIT RAIL MOUNTING DETAIL**  
N.T.S.
- 1. CONDENSING UNIT
  - 2. EQUIPMENT SUPPORT RAIL - PATE ES-5 RAILS
  - 3. SECURE CONDENSING UNIT TO EQUIPMENT RAIL WITH (3) HURRICANE CLIPS PER RAIL
  - 4. ROOF RAIL. REMOVE COUNTERFLASHING, THROUGH BOLT RAIL TO ROOF SUPPORT STEEL WITH 1/4" X 3/8" STEEL BOLTS AND LOCK WASHERS. REPLACE COUNTERFLASHING. TYPICAL 2 PLACES ON EACH RAIL. PROVIDE PER MANUFACTURER'S REQUIREMENTS.
  - 5. HURRICANE CLIP. SECURE UNIT TO ROOF RAIL WITH 1/4" PLATE X 3" ANGLE STEEL AND 1/4" X 20 STEEL LAGS. TYPICAL 2 EACH EQUIPMENT RAIL. TOTAL 4.



OUT TO BID 09/01/2024  
FOR PERMIT 02/09/2024  
OWNER REVIEW 02/09/2024  
NO. 156486 DATE

PROJECT NO. 163412-01  
DATE 02/05/2024  
DRAWN BY K6  
CHECKED BY BR  
SCALE 1/4" = 1'-0"  
SHEET TITLE  
SHEET NO.

MECHANICAL PLAN, NOTES, SCHEDULES, AND DETAILS

M-1