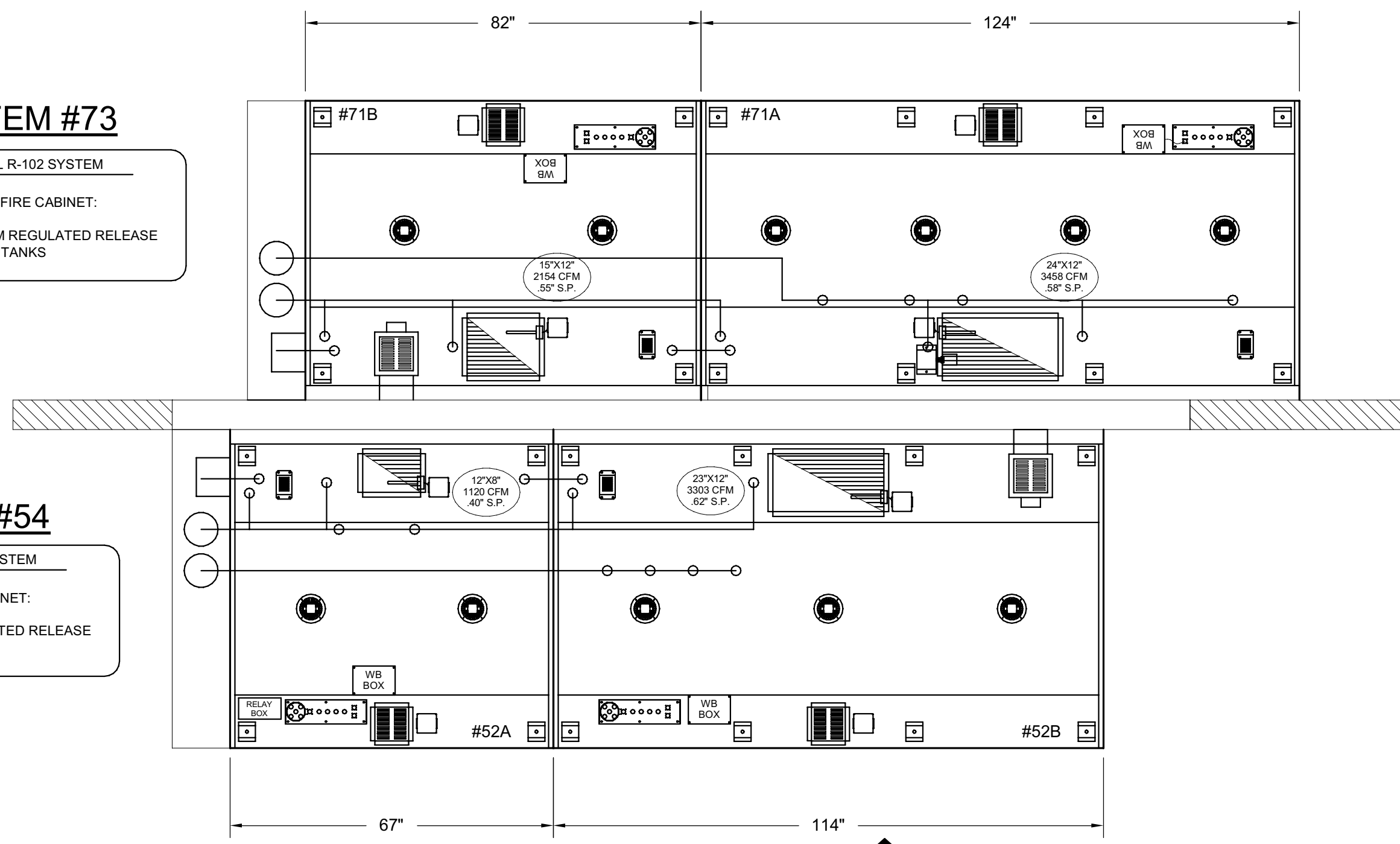
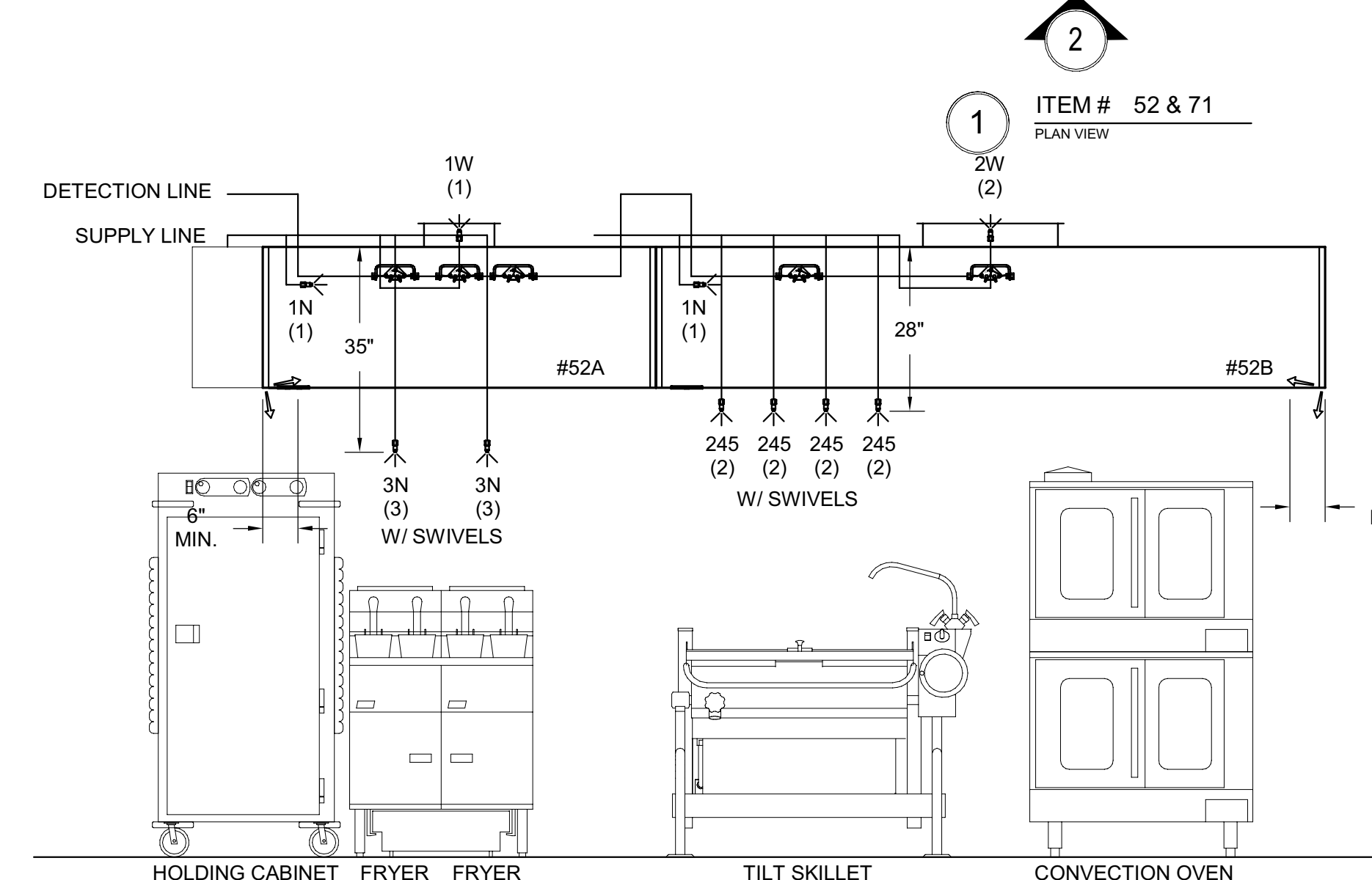


ANSUL R-102 FIRE SUPPRESSION SYSTEM FIRE SYSTEM IS INTEGRAL WITH FACTORY DESIGN/PIPING/FIELD CERTIFICATION

ITEM #73
ANSUL R-102 SYSTEM
MOUNTED IN FIRE CABINET:
(1) ELEC. OEM REGULATED RELEASE
(2) 3 GALLON TANKS



ITEM #54
ANSUL R-102 SYSTEM
MOUNTED IN FIRE CABINET:
(1) ELEC. OEM REGULATED RELEASE
(2) 3 GALLON TANKS



1) ANSUL R-102 FIRE SYSTEM
2) TWO TANK SYSTEM (8 GALLON)
3) 3/8" BLACK IRON PIPING (CONCEALED)
3/8" S.S. APPLIANCE DROPS (EXPOSED)
4) MECHANICAL GAS VALVE - (ADVISE SIZE)

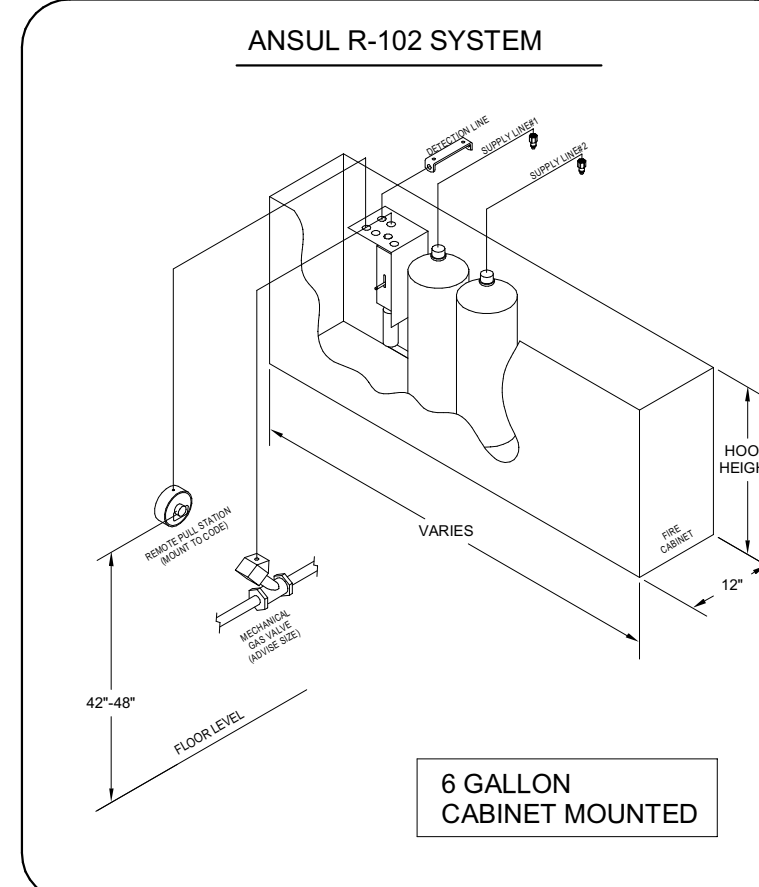
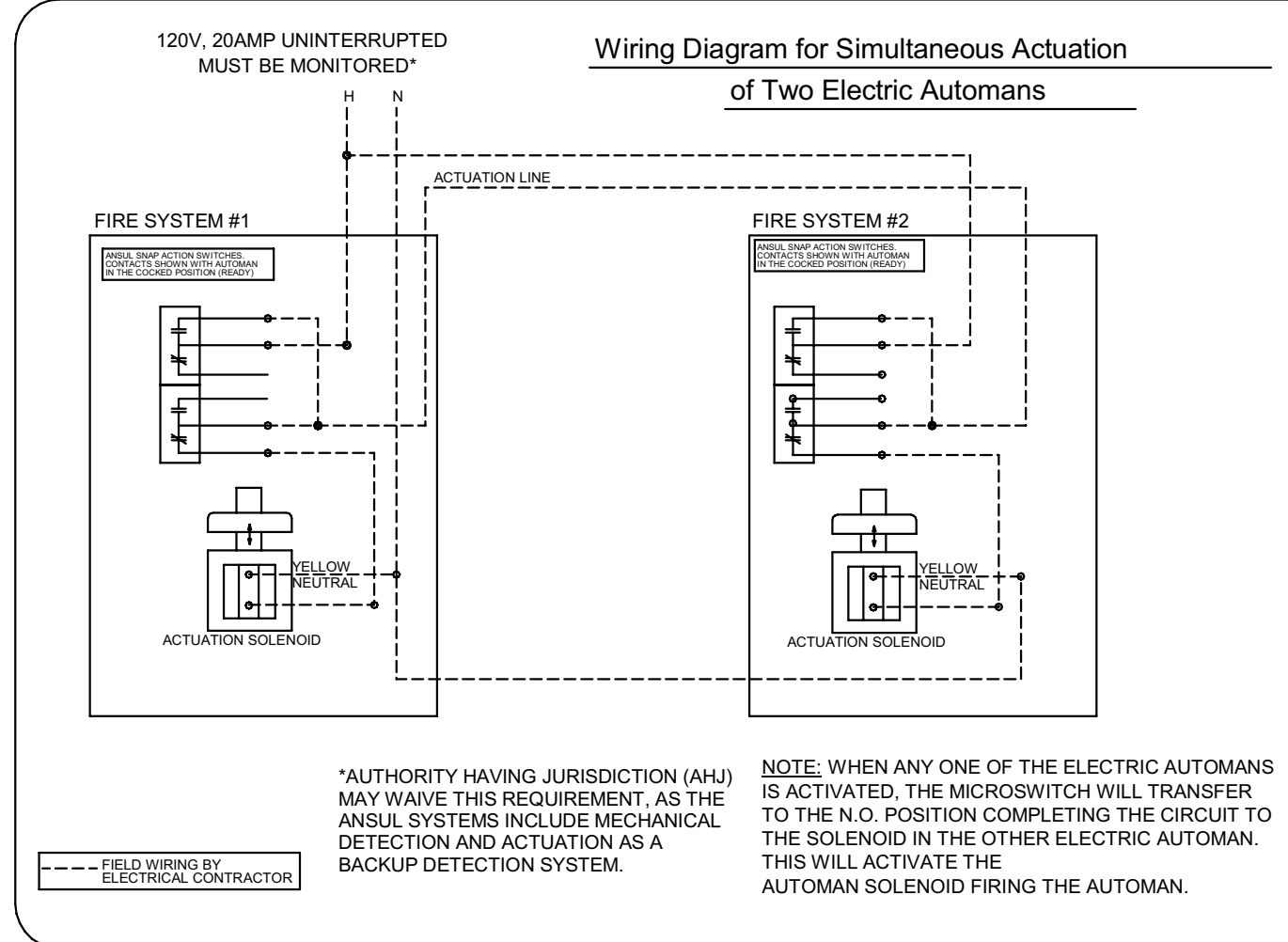
1) ANSUL R-102 FIRE SYSTEM
2) TWO TANK SYSTEM (8 GALLON)
3) 3/8" BLACK IRON PIPING (CONCEALED)
3/8" S.S. APPLIANCE DROPS (EXPOSED)
4) MECHANICAL GAS VALVE - (ADVISE SIZE)

FLOW POINT CHART (#54)

NOZZLE TYPE	NOZZLE FLOW PT.	NOZZLE QUANTITY	TOTAL FLOW PT.
3N	3	-	-
280	2	-	-
280	2	-	-
245	2	4	8
230	2	-	-
2W	2	1	2
2120	2	-	-
1W	1	1	1
1N	1	2	2
1F	1	-	-
1/2N	1/2	-	-
TOTAL FLOW POINTS USED			19
MAX. SYSTEM FLOW POINTS:			22 (8 GALLON)

FLOW POINT CHART (#73)

NOZZLE TYPE	NOZZLE FLOW PT.	NOZZLE QUANTITY	TOTAL FLOW PT.
3N	3	-	-
280	2	-	-
280	2	4	8
245	2	-	-
230	2	-	-
2W	2	2	4
2120	2	-	-
1W	1	-	-
1N	1	3	3
1F	1	-	-
1/2N	1/2	-	-
TOTAL FLOW POINTS USED			19
MAX. SYSTEM FLOW POINTS:			22 (8 GALLON)

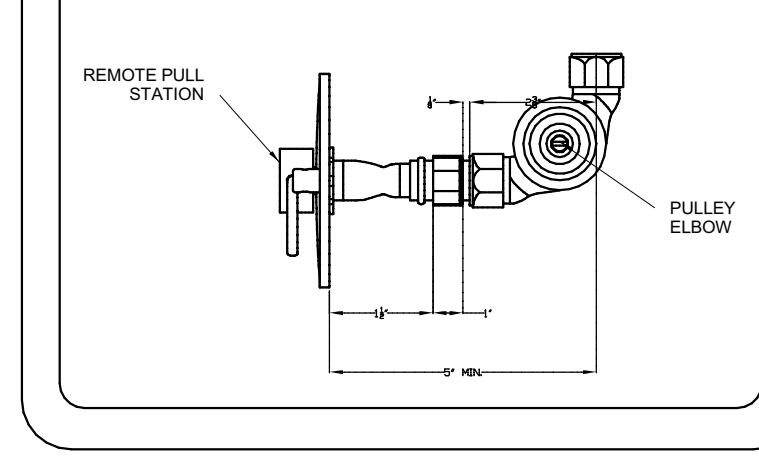
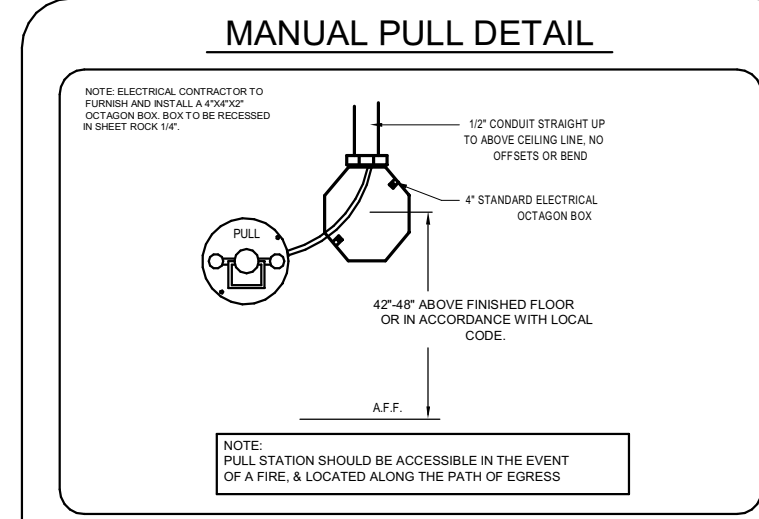


ANSUL NOTES

- THIS INSTALLATION IS TO BE MADE IN ACCORDANCE WITH THE R-102 INSTALLATION MANUAL AND IN ACCORDANCE WITH ALL STATE AND LOCAL CODES.
- THE WIRE ROPE FOR THE DETECTOR AND REMOTE PULL STATION IS TO BE INSTALLED BY AN AUTHORIZED AND FACTORY TRAINED DISTRIBUTOR OR SERVICE REPRESENTATIVE.
- THIS INSTALLATION IS TO BE INSPECTED, PUT INTO OPERATION AND CERTIFIED BY AN AUTHORIZED AND FACTORY TRAINED DISTRIBUTOR OR SERVICE REPRESENTATIVE.
- ELECTRICAL CONTACTS AND WIRING FOR APPLIANCE SHUT OFF TO BE PROVIDED BY THE ELECTRICAL CONTRACTOR.
- ANSUL R-102 RESTAURANT FIRE SUPPRESSION SYSTEMS HAVE BEEN TESTED AND ARE LISTED BY UNDERWRITERS' LABORATORIES, INC. AS FIRE-ENGINEERED SYSTEMS, AND WHEN INSTALLED AS SHOWN ON THIS DRAWING SHALL COMPLY WITH ALL RELEVANT ANSUL INSTALLATION REQUIREMENTS, INSPECTION AND MAINTENANCE MANUALS AND SHALL COMPLY WITH NFPA 96 WHEN INSTALLED AND CERTIFIED BY AUTHORIZED TRAINED ANSUL DISTRIBUTORS IN ACCORDANCE WITH THE MANUAL.
- ALL AGENT DISTRIBUTION PIPING AND DETECTION CONDUIT HOOD PENETRATIONS MUST BE PROPERLY SEALED IN ACCORDANCE WITH NFPA 96.

DISTRIBUTION PIPING REQUIREMENT NOTES:

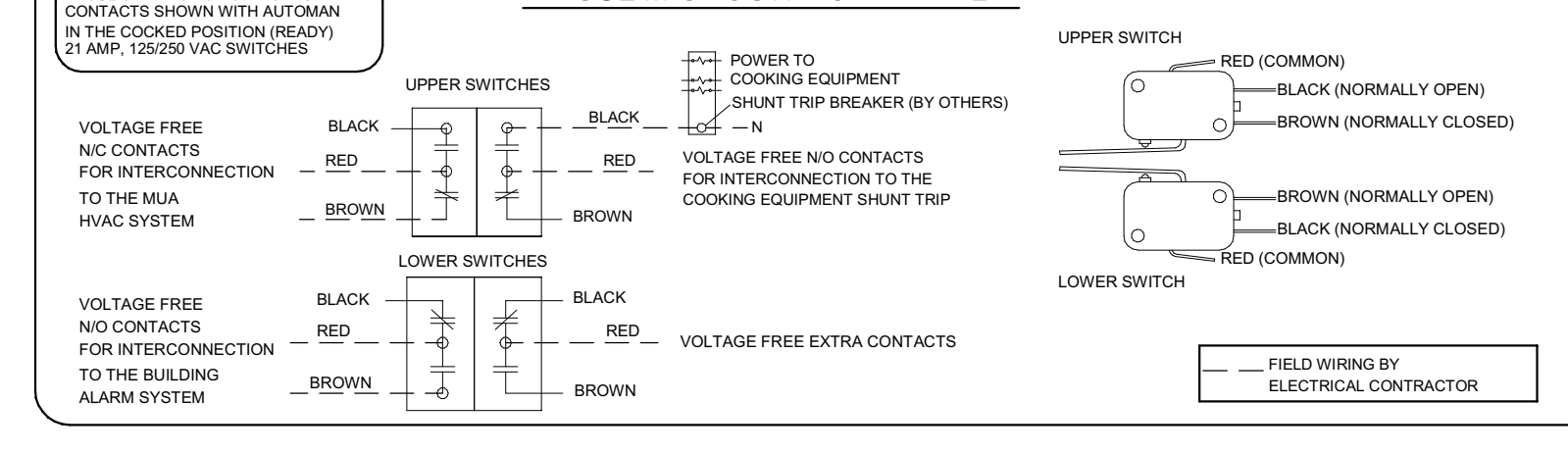
- PIPE SHALL BE 3/8" SCHEDULE 40 BLACK IRON, CHROME PLATED OR STAINLESS STEEL, UNLESS OTHERWISE NOTED.
- FINAL NOZZLE LOCATION MAY NOT VARY FROM LOCATION SHOWN.



NOTE:
HALTON COMPANY WILL SUPPLY ANSUL COMPONENTS AND PRE-PIPED HOODS PER PUBLISHED ANSUL GUIDELINES AND RECOMMENDATIONS. IT IS THE RESPONSIBILITY OF THE F.S.E.C. TO INFORM HALTON OF ANY SPECIAL REQUIREMENTS OF THE LOCAL JURISDICTION PRIOR TO RELEASE OF EQUIPMENT.

NOTE:
ALL PIPING FOR LOW PROXIMITY APPLIANCE PROTECTION SHALL BE PROVIDED & INSTALLED BY THE INSTALLING ANSUL DISTRIBUTOR & NOT BY HALTON.

NOTE:
HAND HELD EXTINGUISHERS, IF REQUIRED, ARE TO BE PROVIDED BY OTHERS.



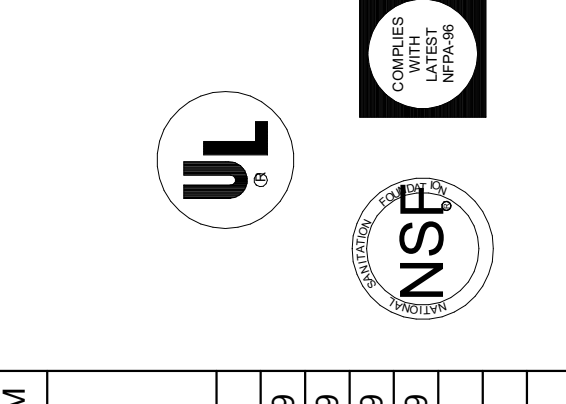
THIS DRAWING MUST BE CHECKED, SIGNED AND RETURNED TO THE APPROPRIATE FACTORY. PLEASE VERIFY THE FOLLOWING:

- ALL INFORMATION, MOUNTING POSITIONS AND DIMENSIONS.
- THE LOCATION AND TYPE OF COOKING EQUIPMENT.

NOTE TO APPROVER: APPROVAL OF THIS DRAWING IS LIMITED TO THE SPECIFIC INFORMATION PROVIDED. APPROVAL DOES NOT CONSTITUTE A GUARANTEE OF THE ACCURACY OF THE INFORMATION PROVIDED. APPROVAL DOES NOT CONSTITUTE A GUARANTEE OF THE ACCURACY OF THE INFORMATION PROVIDED. APPROVAL DOES NOT CONSTITUTE A GUARANTEE OF THE ACCURACY OF THE INFORMATION PROVIDED.

APPROVED FOR FABRICATION: WITH CHANGES AS NOTED

APPROVED BY: _____ DATE: _____



MAIL APPROVED DRAWINGS TO APPROPRIATE FACTORY BELOW:

REV.	DATE	DESCRIPTION
1	02.07.19	MAB
2	09.19.19	AF
3	09.24.19	AF
4	10.15.19	NC
5		
6		

REVISION DESCRIPTION: UPDATE HOODS 52A & 52B, REVISED HOOD LENGTHS & ANSUL LAYOUT, NO CHANGE, NO CHANGE

WEBSITE: WWW.HALTONCOMPANY.COM

HALTON CO. (USA)
101 INDUSTRIAL DRIVE
SCOTTSDALE, AZ 85254
1-270-237-8600

HALTON CO. (CANADA)
1021 BRIMLEY PLACE
MISSISSAUGA, ON L4W 3R7
1-905-624-0301

PROJECT: ISHI CONSERVATION CAMP
LOCATION: CA
DRAWN BY: MAB
DATE: 01.16.19
SCALE: NOT TO SCALE
CONSULTANT: WEBB

Halton

DRIVING TITLE:
FIRE SYSTEM DETAILS
DRAWING NO: U19-047
REV. NO.: 4 SHEET NO.: 2 of 3

IDENTIFICATION STAMP
DIV. OF THE STATE ARCHITECT
APP: 02-118457 INC.
REVIEWED FOR:
SS FLS ACS
DATE: 02/11/2021

OFFICE OF THE STATE FIRE MARSHAL
APPROVED FIRE PLAN ONLY

Approval of this plan does not authorize or approve any construction or installation from any jurisdiction. Approval is subject to field inspection. Other set of approved plans shall be available on the project site at all times.

State of California
Department of General Services
Real Estate Services Division

DGS
GENERAL SERVICES
Project Management
Development Branch
707 3rd St. Fourth Floor
West Sacramento, CA 95605
Project Director: Suhas Karke
(916) 443-9848 (Phone)
(916) 376-1677 (Fax)
www.dgs.ca.gov

CALFIRE Project Director:
Jonathan Pike
(916) 445-4626 (Phone)

0 1/2 1

JCCA J.C. CHANG & ASSOCIATES, INC.
ENGINEERS ARCHITECTS PLANNERS
380 VAN NESS AVENUE, SUITE 208 PH 415 392-2144
TORRANCE, CALIFORNIA 90501 FAX 310 212-5272

JCCA #18011

webb.
130 S. Prospect Ave., Tustin, CA 92780
P 714.508.1880 www.webbsd.com



01/08/21

Issue

No.	Date	Description
1	02/08/2019	DESIGN DEVELOPMENT
2	11/19/2019	90% WORKING DRAWINGS
3	04/10/2020	95% WORKING DRAWINGS
4	06/01/2020	100% WORKING DRAWINGS AHJ REVIEW
5	08/25/2020	AHJ RESUBMITTAL
6	01/08/2021	SFM RESUBMITTAL

Project
ISHI CONSERVATION CAMP, REPLACE KITCHEN
00000000004673

Supervisor	Designed	Drawn	Checked

File Date: 01/08/21
Sheet Title: EXHAUST HOOD DETAILS

DSA Building Number	Work Order

Reference North

Sheet Scale: 1/2" = 1'-0"

Sheet Number: K6.3



Approval of this plan book for authorization or approval by the State Architect is subject to field inspection. One set of approved plans shall be available on the project site at all times.

State of California
 Department of General Services
 Real Estate Services Division

DGS
 GENERAL SERVICES
 Project Management
 Development Branch
 707 3rd St. Fourth Floor
 West Sacramento, CA 95605

Project Director: Suhas Karke
 (916) 443-9848 (Phone)
 (916) 376-1677 (Fax)
 www.dgs.ca.gov

CAL FIRE Project Director:
 Jonathan Pike
 (916) 445-4626 (Phone)

0 1/2 1

JCCA J.C. CHANG & ASSOCIATES, INC.
 ENGINEERS ARCHITECTS PLANNERS
 380 VAN NESS AVENUE, SUITE 208 PH: (916) 202-7144
 TORRANCE, CALIFORNIA 90501 FAX: (310) 212-5272

JCCA #18011

webb
 130 S. Prospect Ave., Tustin, CA 92780
 P 714.508.1880 www.webbfs.com

FOODSERVICE CONSULTANTS
 GINA BRINEGAR
FCS
 PROFESSIONAL MEMBER



01/08/21

Issue

No.	Date	Description
1	02/08/2019	DESIGN DEVELOPMENT
2	11/19/2019	90% WORKING DRAWINGS
3	04/10/2020	95% WORKING DRAWINGS
4	06/01/2020	100% WORKING DRAWINGS AHJ REVIEW
5	08/25/2020	AHJ RESUBMITTAL
6	01/08/2021	SFM RESUBMITTAL

Project

ISHI
 CONSERVATION
 CAMP, REPLACE
 KITCHEN
 00000000004673

Supervisor Designed Drawn Checked

File Date 01/08/21 Vault File Number

Sheet Title

**EXHAUST HOOD
 DETAILS**

DSA Building Number Work Order

Reference North Sheet Scale 3/8" = 1'-0"

Sheet Number **K6.4**

