

Report By:

National TAB
1329 E. KEMPER ROAD
SUITE 4210
CINCINNATI, OH 45246

NATIONAL

TAB

Comfort. Under control.

Report: TAB REPORT
Function: Test, Adjust, & Balance
Date: 6/30/2022

PROJECT
06-27 FAMILY DOLLAR - JASPER, AR

409 COURT ST

JASPER, AR

Client

Oliphant Heating
208 WOLLARD BLVD
RICHMOND, MO

National TAB

Project: 06-27 FAMILY DOLLAR - JASPER, AR

Table Of Contents

| Section | Page # |
|------------------|---------------|
| Summary | 3 |
| Pictures | 4 |
| Balance schedule | 6 |
| Checklist Data | 7 |
| AHU/RTU | 8 |
| FAN - Exhaust | 16 |
| GRD Layout | 18 |

Project Summary

The summary below provides a quick understanding of our scope of work and general testing procedures. Enclosed in the report is further detail about your building performance including recommendations, asset data, and pictures. Our focus is to work with the trades to remedy any issues or deficiencies during the actual field balancing and not after the balancing has occurred to achieve a positive environment and outcome. The level of success is determined by the availability of the trades, possible parts needed, or time constraints.

RTU's (Roof Top Units) w/ Diffusers

Each of the RTU's were measured at their terminal devices or via traverse to establish a total flow for that unit. Each RTU was adjusted to within tolerance of the engineer's design flow. Each outlet was then adjusted to within tolerance of the design flow. Outside air was measured by reading the intake air opening with a velocity grid and multiplying by the free area. The outside air damper was adjusted until the airflow was within the design requirements. Any equipment that fell outside of that tolerance is noted throughout the report.

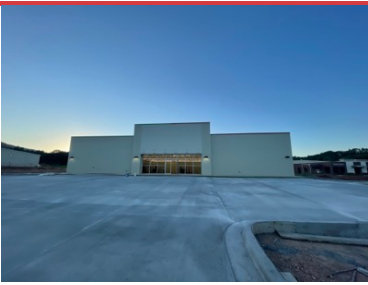
General Exhaust Fans w/ Grilles

The general exhaust fans were measured by reading each air device with a flow hood. The total airflow for each fan is equivalent to the sum of these readings. Fan speed was then adjusted so that the airflow was within tolerance of design. Each terminal device was balanced to within tolerance of the design volume using the installed volume dampers. Any equipment that fell outside of this tolerance is noted throughout the report.

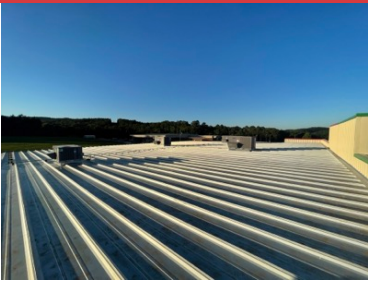
Final Building Tests

After completing the test and balance the final building pressure was measured. It was confirmed that the building pressure fell within acceptable tolerances of $-0.02''$ wc to $+0.02''$ wc and that the pressure measurement coincides with the actual and design net airflow. Any deviations from these standards are noted throughout the report.

The hood capture was tested at the perimeter of the hood and the cook top level with the equipment heat on to ensure satisfactory hood capture and containment.



STOREFRONT



ROOFTOP



RTU1
Unit picture



RTU2
Unit picture



RTU3
Unit picture



RTU4
Unit picture



EF1
Unit picture



EF2
Unit picture

AIR BALANCE SCHEDULE

| UNIT | AREA SERVED | HVAC SUPPLY | | HVAC RETURN | | HVAC OUTDOOR | | OA % | | HOOD MAKE-UP | | HOOD EXHAUST | | GENERAL EXH. | |
|---------------|-------------|-------------|--------|-------------|--------|--------------|--------|--------|--------|--------------|--------|--------------|--------|--------------|--------|
| | | DESIGN | ACTUAL | DESIGN | ACTUAL | DESIGN | ACTUAL | DESIGN | ACTUAL | DESIGN | ACTUAL | DESIGN | ACTUAL | DESIGN | ACTUAL |
| RTU-1 | STORAGE | 1400 | 1291 | 1250 | 1139 | 150 | 152 | 10.7% | 11.8% | | | | | | |
| RTU-2 | WEST SALES | 2800 | 2970 | 2150 | 2317 | 650 | 653 | 23.2% | 22.0% | | | | | | |
| RTU-3 | EAST SALES | 2800 | 2867 | 2150 | 2216 | 650 | 651 | 23.2% | 22.7% | | | | | | |
| RTU-4 | SOUTH SALES | 3500 | 3802 | 2725 | 3021 | 775 | 781 | 22.1% | 20.5% | | | | | | |
| EF-1 | RESTROOM | | | | | | | | | | | | | 75 | 72 |
| EF-2 | RESTROOM | | | | | | | | | | | | | 75 | 81 |
| TOTALS | | 10500 | 10930 | 8275 | 8693 | 2225 | 2237 | | | 0 | 0 | 0 | 0 | 150 | 153 |

NET BUILDING AIRFLOW CALCULATION

| TOTALS | DESIGN | ACTUAL |
|--------------------|-------------|-------------|
| TOTAL OA | 2225 | 2237 |
| TOTAL EXHAUST | 150 | 153 |
| NET AIRFLOW | 2075 | 2084 |

| DOOR TESTED | BUILDING PRESSURE MEASUREMENTS (IN. H2O) |
|----------------|--|
| FRONT | 0.012 |
| SIDE | NA |
| REAR | 0.015 |
| AVERAGE | 0.0135 |

FINAL CHECKS

- ACTUAL NET AIRFLOW COINCIDES WITH DESIGN: ✓

- MEASURED PRESSURES COINCIDES WITH ACTUAL NET AIRFLOW: ✓

- PRESSURE FALLS WITHIN IMC TOLERANCE OF +/-0.02" W.C. ✓

NOTES:



Comfort. Under control.

06-27 FAMILY DOLLAR - JASPER, AR

CheckList Information

Name : TECH - STEP 1: INITIAL WALKTHROUGH **Status :** NotSubmitted

Assigned Organization : National TAB **Asset :**

Requesting Organization : National TAB

CheckList Item Details

INITIAL SITE WALKTHROUGH

| | |
|---|--|
| Review Plan Review Checklist, has it been signed off and meets our standards to start balancing? If not contact processor to ensure job is ready. | YES |
| All diffusers and grilles are installed and match design? | NO, MISSING DIFFUSERS FROM RR AND OFFICE // RESOLVED 6/29/22 |
| Thermostats have power? | YES |
| Have trades/general contractor been notified about any issues and are they created on FaciliBuild? | YES |

Notes/Comments :



Comfort. Under control.

06-27 FAMILY DOLLAR - JASPER, AR

CheckList Information

| | | | |
|----------------------------------|-----------------------------------|-----------------|--------------|
| Name : | TECH - STEP 2: UNIT DATA AND EVAL | Status : | NotSubmitted |
| Assigned Organization : | National TAB | Asset : | |
| Requesting Organization : | National TAB | | |

CheckList Item Details

UNIT DATA AND EVALUATION WHILE GATHERING UNIT DATA CHECK THE FOLLOWING:

| RTU's/AHU's | |
|---|--------------------------------------|
| Economizers are assembled and functional? | YES |
| DCV Max damper opening position is set to minimum? | YES |
| Free cooling enthalpy set point set for lowest setting (Typically "D") | YES ES5 |
| Motors are all operating below the FLA rating? | YES |
| Are belts tight? | YES |
| If direct drive unit is the speed controller working. | YES |
| Is gas piping installed and valves turned on? | GAS PIPING INSTALLED, NOT TURNED ON. |
| Unit free of noticeable noise and vibration | YES |
| EF's | |
| Rotation is correct? | YES |
| Belts are tight? | NA |
| There is no major leakage around base of fan? | NA |
| Is the motor operating below the motor FLA rating? | YES |
| For restroom fan(s) is the back draft damper installed and can it fully open? | NA |
| Unit free of noticeable noise and vibration? | YES |

DOCUMENTATION

Have trades/general contractor been notified about any issues and are they created on FaciliBuild? YES

Notes/Comments :



Comfort. Under control.

06-27 FAMILY DOLLAR - JASPER, AR

CheckList Information

Name : TECH - STEP 3: TEST, ADJUST AND BALANCE **Status :** NotSubmitted

Assigned Organization : National TAB **Asset :**

Requesting Organization : National TAB

CheckList Item Details

TEST, ADJUST, AND BALANCE ALL EQUIPMENT:

DURING TESTING MAKE NOTE OF THE FOLLOWING:

| | |
|---|-----|
| Is space free of drafting? | YES |
| Is space comfortable in all areas? | YES |
| Is the space free of ventilation noise? | YES |
| If deviations from design were necessary to resolve 1-3 what were they? Otherwise put "NA". | NA |

Notes/Comments :



Comfort. Under control.

06-27 FAMILY DOLLAR - JASPER, AR

CheckList Information

Name : TECH - STEP 4: FINAL TESTS **Status :** NotSubmitted

Assigned Organization : National TAB **Asset :**

Requesting Organization : National TAB

CheckList Item Details

FINAL TESTS

ADDITIONAL

| | |
|-----------------------------|-----|
| Thermostats are programmed? | YES |
|-----------------------------|-----|

Notes/Comments :

National TAB

Project: 06-27 FAMILY DOLLAR - JASPER, AR

System/Unit: AHU/RTU



Comfort. Under control.

Asset: RTU1

AREA:STORAGE

| Unit Data | | |
|---------------------|---------|------------------|
| | Design | Actual |
| MFG | CARRIER | CARRIER |
| Serial Num | - | 1522C09728 |
| Model Num | HC | 48GC05F2M5A6F0C0 |
| Type | - | RTU |
| Configuration | - | VERTICAL |
| Num OA Filters 1 | - | 1 METAL MESH |
| OA Filter Size 1 | - | 14X28 |
| Num Final Filter 1 | - | 2 |
| Final Filter Size 1 | - | 16X25X2 |

| Motor Data | | |
|----------------|--------|----------------|
| | Design | Actual |
| Motor MFG | - | [1] |
| Frame | - | [1] |
| Horsepower | - | [1] |
| Motor Rpm | - | [1] |
| Phase | 3 | [1] 1 |
| Rated Voltage | 208 | [1] 208/230 |
| Rated Amperage | - | [1] 7.1 |

| Drive Data | | |
|------------|--------|--------|
| | Design | Actual |
| | | |

| Test Data | | |
|------------------------|--------|-------------|
| | Design | Actual |
| SF CFM | 1400 | 1291 |
| SF RPM | - | 1534 |
| RA CFM | 1250 | 1139 |
| OA CFM | 150 | 152 |
| RL Voltage | - | 210/210/211 |
| RL Amperage | - | 2.9/3.4/3.5 |
| SF Rotation | - | CCW |
| RA Damper Position | - | 3.15V |
| Min OA Damper Position | - | 14% |
| Min OA Damper Type | - | ECONOMIZER |
| OA Enthalpy Setpt | - | ES5 |

| Performance Data | | |
|------------------|--------|--------|
| | Design | Actual |
| MA Plenum SP | - | -0.27" |
| Fan Suction SP | - | -0.40" |
| Fan Discharge SP | - | 0.15 |
| Total ESP | 1.0" | 0.37" |
| Fan Total SP | - | 0.55" |

| General | | |
|----------------------------|--------|--------|
| | Design | Actual |
| Fan Rotation Correct | - | YES |
| Unit Filters Clean | - | YES |
| Condensate Drain Installed | - | YES |

Completed By: Jacob Davidson

Notes:[1] MOTOR LABEL NOT ACCESSIBLE. INFORMATION TAKEN FROM UNIT LABEL MOTOR SPEED SET AT POSITION A 6.9DCV 90%

National TAB

Project:06-27 FAMILY DOLLAR - JASPER, AR

AHU/RTU



Comfort. Under control.

Diffuser Supply (GRD)

RTU1/STORAGE

| Asset | Location | Type | Size | DESIGN CFM | AK | CFM(1) | CFM(2) |
|-------|------------------|--------------------|------|------------|-------|--------|--------|
| SGRD1 | STORAGE | D | 14X6 | 275 | 0.785 | 369 | 341 |
| | FINAL CFM | % to design | | | | | |
| | 265 | 96.4 | | | | | |
| SGRD2 | STORAGE | D | 14X6 | 275 | 0.785 | 259 | 309 |
| | FINAL CFM | % to design | | | | | |
| | 248 | 90.2 | | | | | |
| SGRD3 | STORAGE | D | 14X6 | 275 | 0.785 | 234 | 258 |
| | FINAL CFM | % to design | | | | | |
| | 203 | 73.8 | | | | | |
| SGRD4 | STORAGE | D | 14X6 | 275 | 0.785 | 241 | 349 |
| | FINAL CFM | % to design | | | | | |
| | 271 | 98.5 | | | | | |
| SGRD5 | OFFICE | A | 8" | 100 | 1 | 198 | 134 |
| | FINAL CFM | % to design | | | | | |
| | 104 | 104.0 | | | | | |
| SGRD6 | RESTROOM | C | 8" | 50 | 1 | 212 | 73 |
| | FINAL CFM | % to design | | | | | |
| | 54 | 108.0 | | | | | |
| SGRD7 | RESTROOM HALL | A | 8" | 100 | 1 | 196 | 120 |
| | FINAL CFM | % to design | | | | | |
| | 93 | 93.0 | | | | | |
| SGRD8 | RESTROOM | C | 8" | 50 | 1 | 182 | 71 |
| | FINAL CFM | % to design | | | | | |
| | 53 | 106.0 | | | | | |

Completed By: Jacob Davidson on

| Asset | Notes |
|-------|--|
| RTU1 | [1] MOTOR LABEL NOT ACCESSIBLE. INFORMATION TAKEN FROM UNIT LABEL MOTOR SPEED SET AT POSITION A 6.9DCV 90% |

National TAB

Project: 06-27 FAMILY DOLLAR - JASPER, AR

System/Unit: AHU/RTU



Comfort. Under control.

Asset: RTU2

AREA: WEST SALES

| Unit Data | | |
|---------------------|---------|--------------------|
| | Design | Actual |
| MFG | CARRIER | CARRIER |
| Serial Num | - | 1622P80757 |
| Model Num | HC | 48HCED08F2M5A6F0J0 |
| Type | - | RTU |
| Configuration | - | VERTICAL |
| Num OA Filters 1 | - | 1 |
| OA Filter Size 1 | - | 19.25X35 |
| Num Final Filter 1 | - | 4 |
| Final Filter Size 1 | - | 20X20X2 |

| Motor Data | | |
|----------------|--------|-------------|
| | Design | Actual |
| Motor MFG | - | MARATHON |
| Frame | - | 56HZ |
| Horsepower | - | NL |
| Motor Rpm | - | 1670 |
| Phase | 3 | 3 |
| Rated Voltage | 208 | 208-230/460 |
| Rated Amperage | - | 6.7-6.6/3.3 |

| Drive Data | | |
|--------------------|--------|----------------|
| | Design | Actual |
| Motor Sheave Size | - | 4" |
| Motor Bore Size | - | 5/8" |
| Motor Sheave SetPt | - | 5 TURNS OUT |
| Fan Sheave Size | - | 7" |
| Fan Sheave Bore | - | 1" |
| Belt CL Distance | - | 16.75" |
| Num of Belts | - | 1 |
| Belt Size | - | A48 |
| Belt Alignment | - | VERIFIED |

| Test Data | | |
|------------------------|--------|------------------------|
| | Design | Actual |
| SF CFM | 2800 | 2970 |
| SF RPM | - | 722 |
| RA CFM | 2150 | 2317 |
| OA CFM | 650 | 653 |
| RL Voltage | - | 208/209/209 |
| RL Amperage | - | 3.2/3.5/3.9 |
| SF Rotation | - | CCW |
| RA Damper Position | - | 4.0V HIGH 4.85V LOW |
| Min OA Damper Position | - | 25% HIGH 35% LOW |
| Min OA Damper Type | - | ECONOMIZER |
| OA Enthalpy Setpt | - | ES5 |

| Performance Data | | |
|------------------|--------|--------|
| | Design | Actual |
| MA Plenum SP | - | -0.43" |
| Fan Suction SP | - | -0.56" |
| Fan Discharge SP | - | 0.39" |
| Total ESP | 1.0" | 0.82" |
| Fan Total SP | - | 0.95" |

| General | | |
|----------------------------|--------|--------|
| | Design | Actual |
| Fan Rotation Correct | - | YES |
| Unit Filters Clean | - | YES |
| Condensate Drain Installed | - | YES |

Completed By: Jacob Davidson

Notes:

National TAB

Project:06-27 FAMILY DOLLAR - JASPER, AR

AHU/RTU



Comfort. Under control.

Diffuser Supply (GRD)

RTU2/WEST SALES

| Asset | Location | Type | MFG | Size | Model Num | DESIGN CFM | AK |
|-------|---------------|---------------|---------------|---------------|------------------|--------------------|----|
| SGRD1 | SALES | B | SUPPLY | 12" | NA | 350 | 1 |
| | VEL(1) | CFM(1) | VEL(2) | CFM(2) | FINAL CFM | % to design | |
| | | 400 | | 388 | 367 | 104.9 | |
| SGRD2 | SALES | B | SUPPLY | 12" | NA | 350 | 1 |
| | VEL(1) | CFM(1) | VEL(2) | CFM(2) | FINAL CFM | % to design | |
| | | 317 | | 366 | 346 | 98.9 | |
| SGRD3 | SALES | B | SUPPLY | 12" | NA | 350 | 1 |
| | VEL(1) | CFM(1) | VEL(2) | CFM(2) | FINAL CFM | % to design | |
| | | 472 | | 412 | 384 | 109.7 | |
| SGRD4 | SALES | B | SUPPLY | 12" | NA | 350 | 1 |
| | VEL(1) | CFM(1) | VEL(2) | CFM(2) | FINAL CFM | % to design | |
| | | 452 | | 394 | 373 | 106.6 | |
| SGRD5 | SALES | B | SUPPLY | 12" | NA | 350 | 1 |
| | VEL(1) | CFM(1) | VEL(2) | CFM(2) | FINAL CFM | % to design | |
| | | 432 | | 405 | 383 | 109.4 | |
| SGRD6 | SALES | B | SUPPLY | 12" | NA | 350 | 1 |
| | VEL(1) | CFM(1) | VEL(2) | CFM(2) | FINAL CFM | % to design | |
| | | 353 | | 384 | 363 | 103.7 | |
| SGRD7 | SALES | B | SUPPLY | 12" | NA | 350 | 1 |
| | VEL(1) | CFM(1) | VEL(2) | CFM(2) | FINAL CFM | % to design | |
| | | 412 | | 412 | 384 | 109.7 | |
| SGRD8 | SALES | B | SUPPLY | 12" | NA | 350 | 1 |
| | VEL(1) | CFM(1) | VEL(2) | CFM(2) | FINAL CFM | % to design | |
| | | 389 | | 391 | 370 | 105.7 | |

Completed By:Jacob Davidson on

| Asset | Notes |
|-------|-------|
|-------|-------|

National TAB

Project: 06-27 FAMILY DOLLAR - JASPER, AR

System/Unit: AHU/RTU



Comfort. Under control.

Asset: RTU3

AREA: EAST SALES

| Unit Data | | |
|---------------------|---------|--------------------|
| | Design | Actual |
| MFG | CARRIER | CARRIER |
| Serial Num | - | 1622P80758 |
| Model Num | HC | 48HCED08F2M5A6F0J0 |
| Type | - | RTU |
| Configuration | - | VERTICAL |
| Num OA Filters 1 | - | 1 |
| OA Filter Size 1 | - | 19.25X35 |
| Num Final Filter 1 | - | 4 |
| Final Filter Size 1 | - | 20X20X2 |

| Motor Data | | |
|----------------|--------|-------------|
| | Design | Actual |
| Motor MFG | - | MARATHON |
| Frame | - | 56HZ |
| Horsepower | - | NL |
| Motor Rpm | - | 1670 |
| Phase | 3 | 3 |
| Rated Voltage | 208 | 208-230/460 |
| Rated Amperage | - | 6.7-6.6/3.3 |

| Drive Data | | |
|--------------------|--------|-------------|
| | Design | Actual |
| Motor Sheave Size | - | 4" |
| Motor Bore Size | - | 5/8" |
| Motor Sheave SetPt | - | 5 TURNS OUT |
| Fan Sheave Size | - | 7" |
| Fan Sheave Bore | - | 1" |
| Belt CL Distance | - | 16.75" |
| Num of Belts | - | 1 |
| Belt Size | - | A48 |
| Belt Alignment | - | VERIFIED |

| Test Data | | |
|------------------------|--------|-----------------------|
| | Design | Actual |
| SF CFM | 2800 | 2867 |
| SF RPM | - | 721 |
| RA CFM | 2150 | 2216 |
| OA CFM | 650 | 651 |
| RL Voltage | - | 209/209/210 |
| RL Amperage | - | 3.0/3.2/3.6 |
| SF Rotation | - | CCW |
| RA Damper Position | - | 3.4V HIGH 4.3V LOW |
| Min OA Damper Position | - | 17% HIGH 28% LOW |
| Min OA Damper Type | - | ECONOMIZER |
| OA Enthalpy Setpt | - | ES5 |

| Performance Data | | |
|------------------|--------|--------|
| | Design | Actual |
| MA Plenum SP | - | -0.44" |
| Fan Suction SP | - | -0.69" |
| Fan Discharge SP | - | 0.37" |
| Total ESP | 1.0" | 0.81" |
| Fan Total SP | - | 1.06" |

| General | | |
|----------------------------|--------|--------|
| | Design | Actual |
| Fan Rotation Correct | - | YES |
| Unit Filters Clean | - | YES |
| Condensate Drain Installed | - | YES |

Completed By: Jacob Davidson

Notes:

National TAB

Project:06-27 FAMILY DOLLAR - JASPER, AR

AHU/RTU



Comfort. Under control.

Diffuser Supply (GRD)

RTU3/EAST SALES

| Asset | Location | Type | MFG | Size | Model Num | DESIGN CFM | AK |
|-------|---------------|---------------|---------------|---------------|------------------|--------------------|----|
| SGRD1 | SALES | B | SUPPLY | 12" | NA | 350 | 1 |
| | VEL(1) | CFM(1) | VEL(2) | CFM(2) | FINAL CFM | % to design | |
| | | 383 | | 381 | 360 | 102.9 | |
| SGRD2 | SALES | B | SUPPLY | 12" | NA | 350 | 1 |
| | VEL(1) | CFM(1) | VEL(2) | CFM(2) | FINAL CFM | % to design | |
| | | 385 | | 386 | 364 | 104.0 | |
| SGRD3 | SALES | B | SUPPLY | 12" | NA | 350 | 1 |
| | VEL(1) | CFM(1) | VEL(2) | CFM(2) | FINAL CFM | % to design | |
| | | 382 | | 382 | 361 | 103.1 | |
| SGRD4 | SALES | B | SUPPLY | 12" | NA | 350 | 1 |
| | VEL(1) | CFM(1) | VEL(2) | CFM(2) | FINAL CFM | % to design | |
| | | 385 | | 384 | 363 | 103.7 | |
| SGRD5 | SALES | B | SUPPLY | 12" | NA | 350 | 1 |
| | VEL(1) | CFM(1) | VEL(2) | CFM(2) | FINAL CFM | % to design | |
| | | 364 | | 366 | 346 | 98.9 | |
| SGRD6 | SALES | B | SUPPLY | 12" | NA | 350 | 1 |
| | VEL(1) | CFM(1) | VEL(2) | CFM(2) | FINAL CFM | % to design | |
| | | 376 | | 376 | 355 | 101.4 | |
| SGRD7 | SALES | B | SUPPLY | 12" | NA | 350 | 1 |
| | VEL(1) | CFM(1) | VEL(2) | CFM(2) | FINAL CFM | % to design | |
| | | 392 | | 388 | 367 | 104.9 | |
| SGRD8 | SALES | B | SUPPLY | 12" | NA | 350 | 1 |
| | VEL(1) | CFM(1) | VEL(2) | CFM(2) | FINAL CFM | % to design | |
| | | 373 | | 371 | 351 | 100.3 | |

Completed By:Jacob Davidson on

| Asset | Notes |
|-------|-------|
|-------|-------|

National TAB

Project: 06-27 FAMILY DOLLAR - JASPER, AR

System/Unit: AHU/RTU



Comfort. Under control.

Asset: RTU4

AREA:SOUTH SALES

| Unit Data | | |
|---------------------|---------|--------------------|
| | Design | Actual |
| MFG | CARRIER | CARRIER |
| Serial Num | - | 1622P80628 |
| Model Num | HC | 48HCED11F2M5A6F0J0 |
| Type | - | RTU |
| Configuration | - | VERTICAL |
| Num OA Filters 1 | - | 1 METAL MESH |
| OA Filter Size 1 | - | 19.25X35 |
| Num Final Filter 1 | - | 4 |
| Final Filter Size 1 | - | 20X20X2 |

| Motor Data | | |
|----------------|--------|----------|
| | Design | Actual |
| Motor MFG | - | MARATHON |
| Frame | - | 56HZ |
| Horsepower | - | NL |
| Motor Rpm | - | 1750 |
| Phase | 3 | 3 |
| Rated Voltage | 208 | 230/460 |
| Rated Amperage | - | 9.2/4.6 |

| Drive Data | | |
|--------------------|--------|-------------|
| | Design | Actual |
| Motor Sheave Size | - | 4.75" |
| Motor Bore Size | - | 7/8" |
| Motor Sheave SetPt | - | 5 TURNS OUT |
| Fan Sheave Size | - | 7" |
| Fan Sheave Bore | - | 1" |
| Belt CL Distance | - | 17" |
| Num of Belts | - | 1 |
| Belt Size | - | AX49 |
| Belt Alignment | - | VERIFIED |

| Test Data | | |
|------------------------|--------|-----------------------|
| | Design | Actual |
| SF CFM | 3500 | 3802 |
| SF RPM | - | 848 |
| RA CFM | 2725 | 3021 |
| OA CFM | 775 | 781 |
| RL Voltage | - | 204/204/205 |
| RL Amperage | - | 4.9/5.4/6.0 |
| SF Rotation | - | CCW |
| RA Damper Position | - | 4.1V HIGH 5.1V LOW |
| Min OA Damper Position | - | 26% HIGH 38% LOW |
| Min OA Damper Type | - | ECONOMIZER |
| OA Enthalpy Setpt | - | ES5 |

| Performance Data | | |
|------------------|--------|--------|
| | Design | Actual |
| MA Plenum SP | - | -0.68" |
| Fan Suction SP | - | -0.89" |
| Fan Discharge SP | - | 0.34" |
| Total ESP | 1.0" | 1.02" |
| Fan Total SP | - | 1.23" |

| General | | |
|----------------------------|--------|--------|
| | Design | Actual |
| Fan Rotation Correct | - | YES |
| Unit Filters Clean | - | YES |
| Condensate Drain Installed | - | YES |

Completed By: Jacob Davidson

Notes:

National TAB

Project:06-27 FAMILY DOLLAR - JASPER, AR

AHU/RTU



Comfort. Under control.

Diffuser Supply (GRD)

RTU4/SOUTH SALES

| Asset | Location | Type | MFG | Size | Model Num | DESIGN CFM | AK |
|-------|---------------|---------------|---------------|---------------|------------------|--------------------|----|
| SGRD1 | SALES | B | SUPPLY | 12" | NA | 440 | 1 |
| | VEL(1) | CFM(1) | VEL(2) | CFM(2) | FINAL CFM | % to design | |
| | | 431 | | 490 | 467 | 106.1 | |
| SGRD2 | SALES | B | SUPPLY | 12" | NA | 440 | 1 |
| | VEL(1) | CFM(1) | VEL(2) | CFM(2) | FINAL CFM | % to design | |
| | | 440 | | 507 | 484 | 110.0 | |
| SGRD3 | SALES | B | SUPPLY | 12" | NA | 435 | 1 |
| | VEL(1) | CFM(1) | VEL(2) | CFM(2) | FINAL CFM | % to design | |
| | | 557 | | 493 | 470 | 108.0 | |
| SGRD4 | SALES | B | SUPPLY | 12" | NA | 435 | 1 |
| | VEL(1) | CFM(1) | VEL(2) | CFM(2) | FINAL CFM | % to design | |
| | | 589 | | 504 | 481 | 110.6 | |
| SGRD5 | SALES | B | SUPPLY | 12" | NA | 435 | 1 |
| | VEL(1) | CFM(1) | VEL(2) | CFM(2) | FINAL CFM | % to design | |
| | | 546 | | 490 | 467 | 107.4 | |
| SGRD6 | SALES | B | SUPPLY | 12" | NA | 435 | 1 |
| | VEL(1) | CFM(1) | VEL(2) | CFM(2) | FINAL CFM | % to design | |
| | | 539 | | 501 | 478 | 109.9 | |
| SGRD7 | SALES | B | SUPPLY | 12" | NA | 440 | 1 |
| | VEL(1) | CFM(1) | VEL(2) | CFM(2) | FINAL CFM | % to design | |
| | | 441 | | 497 | 474 | 107.7 | |
| SGRD8 | SALES | B | SUPPLY | 12" | NA | 440 | 1 |
| | VEL(1) | CFM(1) | VEL(2) | CFM(2) | FINAL CFM | % to design | |
| | | 440 | | 504 | 481 | 109.3 | |

Completed By:Jacob Davidson on

| Asset | Notes |
|-------|-------|
|-------|-------|

National TAB

Project: 06-27 FAMILY DOLLAR - JASPER, AR

System/Unit: FAN - Exhaust



Comfort. Under control.

Asset: EF1

AREA:RESTROOM

| Unit Data | | |
|---------------|-----------|----------|
| | Design | Actual |
| MFG | GREENHECK | BROAN |
| Model Num | SP-B110 | LP80-B |
| Serial Num | - | NL |
| Type | CEILING | CEILING |
| Configuration | VERTICAL | VERTICAL |

| Motor Data | | |
|------------------|--------|--------|
| | Design | Actual |
| Motor MFG | - | BROAN |
| Frame | - | NL |
| Horsepower | 80W | NL |
| Motor Rpm | - | NL |
| Phase | 1 | 1 |
| Voltage (rated) | 120 | 120 |
| Amperage (rated) | - | 0.3 |
| Service Factor | - | 1 |

| Test Data | | |
|------------------|--------|--------|
| | Design | Actual |
| CFM | 75 | 72 |
| Fan RPM | - | UTO |
| Fan Rotation | - | CW |
| Motor RPM | - | NA |
| System SetPt | - | NA |
| RL Voltage | - | 123 |
| RL Amperage | - | 0.19 |
| Total ESP | 0.25" | UTO |
| Fan Inlet SP | - | UTO |
| Fan Discharge SP | - | UTO |

Completed By: Jacob Davidson

Notes:HARD CEILING MOUNTED SINGLE SPEED FAN

| Asset | Notes |
|-------|-------|
| | |

National TAB

Project: 06-27 FAMILY DOLLAR - JASPER, AR

System/Unit: FAN - Exhaust



Comfort. Under control.

Asset: EF2

AREA:RESTROOM

| Unit Data | | |
|---------------|-----------|----------|
| | Design | Actual |
| MFG | GREENHECK | BROAN |
| Model Num | SP-B110 | LP80-B |
| Serial Num | - | NL |
| Type | CEILING | CEILING |
| Configuration | VERTICAL | VERTICAL |

| Test Data | | |
|------------------|--------|--------|
| | Design | Actual |
| CFM | 75 | 81 |
| Fan RPM | - | NA |
| Fan Rotation | - | CW |
| Motor RPM | - | NA |
| System SetPt | - | NA |
| RL Voltage | - | 122 |
| RL Amperage | - | 0.19 |
| Total ESP | 0.25" | UTO |
| Fan Inlet SP | - | UTO |
| Fan Discharge SP | - | UTO |

| Motor Data | | |
|------------------|--------|--------|
| | Design | Actual |
| Motor MFG | - | BROAN |
| Frame | - | NL |
| Horsepower | - | NL |
| Motor Rpm | - | NL |
| Phase | 3 | 1 |
| Voltage (rated) | 120 | 120 |
| Amperage (rated) | - | 0.30 |
| Service Factor | - | 1 |

Completed By: Jacob Davidson

Notes:HARD CEILING MOUNTED SINGLE SPEED FAN

| Asset | Notes |
|-------|-------|
|-------|-------|

